

Data Path : Z:\voasrv\HPCHEM1\MSVOA_V\Data\VV050322\
 Data File : VV025816.D
 Acq On : 04 May 2022 00:18
 Operator : SY/MD
 Sample : N2615-03
 Misc : 25mL/MSVOA_V/WATER
 ALS Vial : 37 Sample Multiplier: 1

Instrument :
 MSVOA_V
 ClientSampleId :
 BH0D7

Integration Parameters: rteint.p
 Integrator: RTE
 Smoothing : ON Filtering: 5
 Sampling : 1 Min Area: 3 % of largest Peak
 Start Thrs: 0.1 Max Peaks: 100
 Stop Thrs : 0 Peak Location: TOP

If leading or trailing edge < 100 prefer < Baseline drop else tangent >
 Peak separation: 5

Method : Z:\voasrv\HPCHEM1\MSVOA_V\Method\SFAMVTR050322WMA.M
 Title : TRACE VOA SFAM1.0

Signal : TIC: VV025816.D\data.ms

peak #	R.T. min	first scan	max scan	last scan	PK TY	peak height	corr. area	corr. % max.	% of total
1	1.307	76	83	97	rVB	114376	119375	18.64%	2.328%
2	1.571	157	165	176	rBV	113574	125008	19.52%	2.437%
3	2.111	321	333	347	rBV	195974	282614	44.13%	5.510%
4	2.188	347	357	372	rVB2	9703	23538	3.68%	0.459%
5	2.510	448	457	468	rVB4	6281	10217	1.60%	0.199%
6	3.899	875	889	911	rBV	62520	205488	32.09%	4.007%
7	4.352	1013	1030	1056	rBV2	129200	337393	52.68%	6.579%
8	5.050	1229	1247	1282	rBV3	243545	640424	100.00%	12.487%
9	5.619	1412	1424	1453	rBV	153078	314085	49.04%	6.124%
10	5.915	1505	1516	1529	rBV10	6913	15450	2.41%	0.301%
11	6.069	1551	1564	1596	rBV	139690	294959	46.06%	5.751%
12	6.989	1840	1850	1872	rBV	53420	102932	16.07%	2.007%
13	7.317	1941	1952	1968	rBV	266140	465532	72.69%	9.077%
14	7.394	1968	1976	2001	rVB2	32924	66662	10.41%	1.300%
15	7.625	2039	2048	2064	rBV	31460	57777	9.02%	1.127%
16	8.088	2182	2192	2227	rBV	253637	496171	77.48%	9.674%
17	8.252	2235	2243	2261	rVB7	9441	17949	2.80%	0.350%
18	8.854	2417	2430	2451	rBV	251612	414566	64.73%	8.083%
19	9.143	2511	2520	2530	rBV3	8048	14351	2.24%	0.280%
20	9.548	2633	2646	2657	rBV	10004	16217	2.53%	0.316%
21	10.021	2781	2793	2805	rBV4	9891	19154	2.99%	0.373%
22	10.214	2842	2853	2870	rBV	87328	141302	22.06%	2.755%
23	10.503	2933	2943	2951	rBV7	6342	10329	1.61%	0.201%
24	10.915	3063	3071	3081	rBV	8171	12686	1.98%	0.247%
25	11.153	3134	3145	3155	rBV6	6560	10183	1.59%	0.199%
26	11.249	3164	3175	3194	rBV	246941	386077	60.28%	7.528%
27	11.336	3194	3202	3215	rVB2	5258	8813	1.38%	0.172%
28	11.529	3252	3262	3274	rBV	36402	61949	9.67%	1.208%
29	11.622	3280	3291	3313	rVB	251378	397654	62.09%	7.754%
30	12.345	3507	3516	3525	rBV3	20461	32484	5.07%	0.633%
31	12.670	3611	3617	3629	rVB5	6210	10201	1.59%	0.199%
32	13.506	3867	3877	3892	rBV	10102	17144	2.68%	0.334%

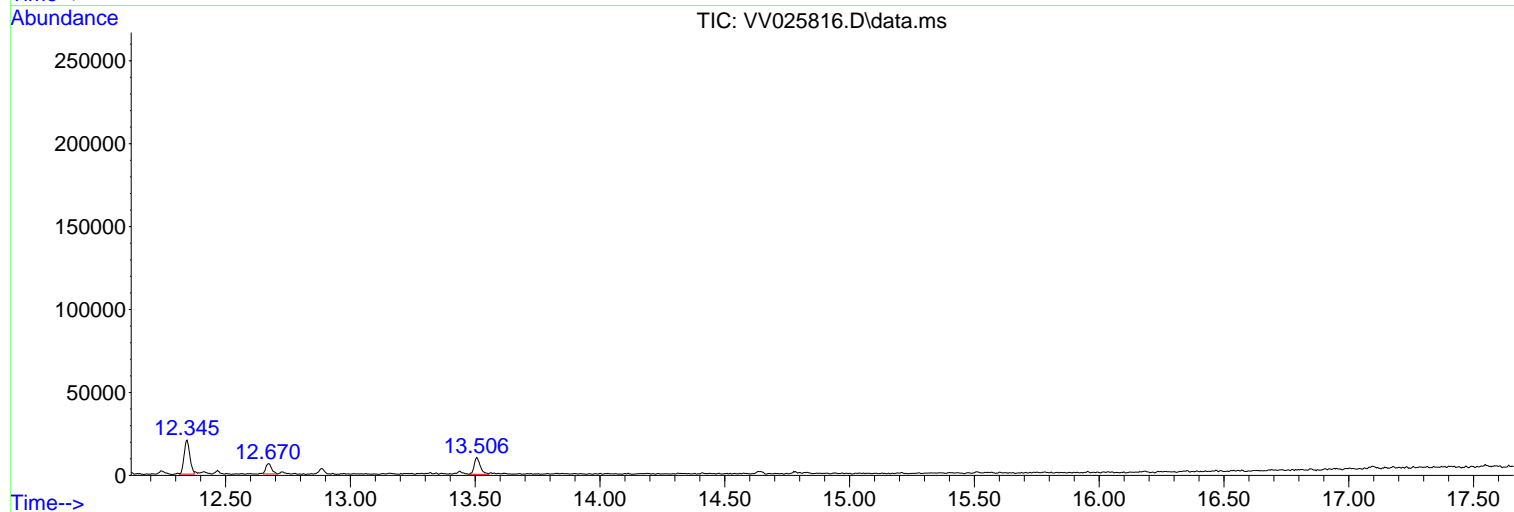
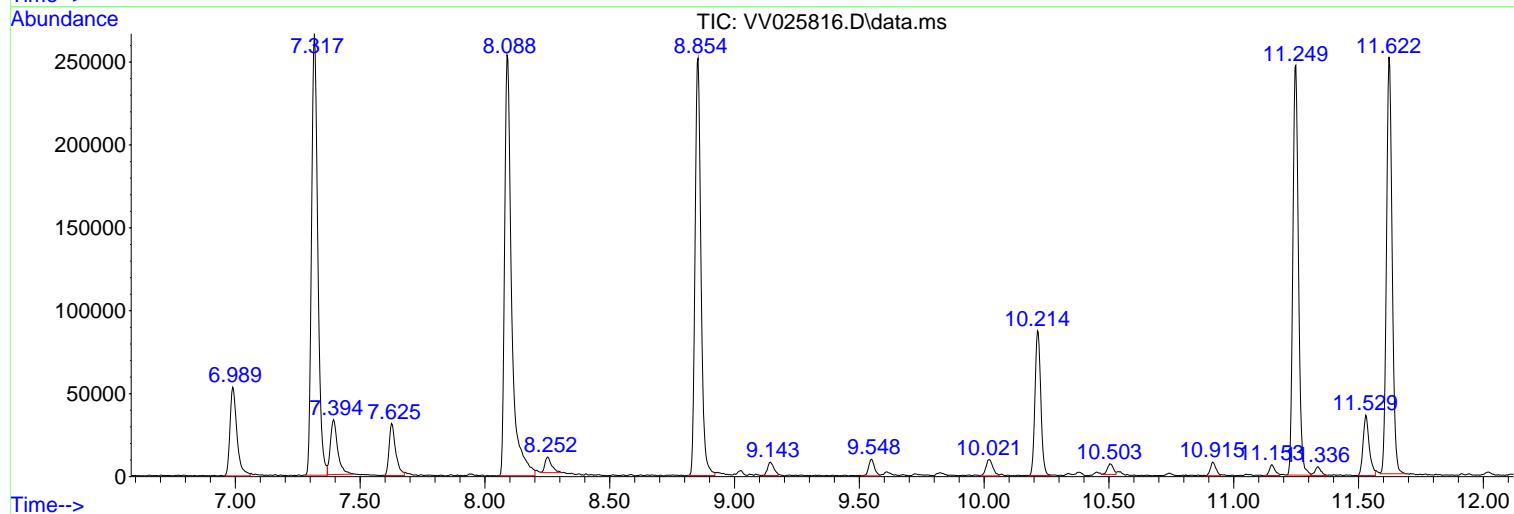
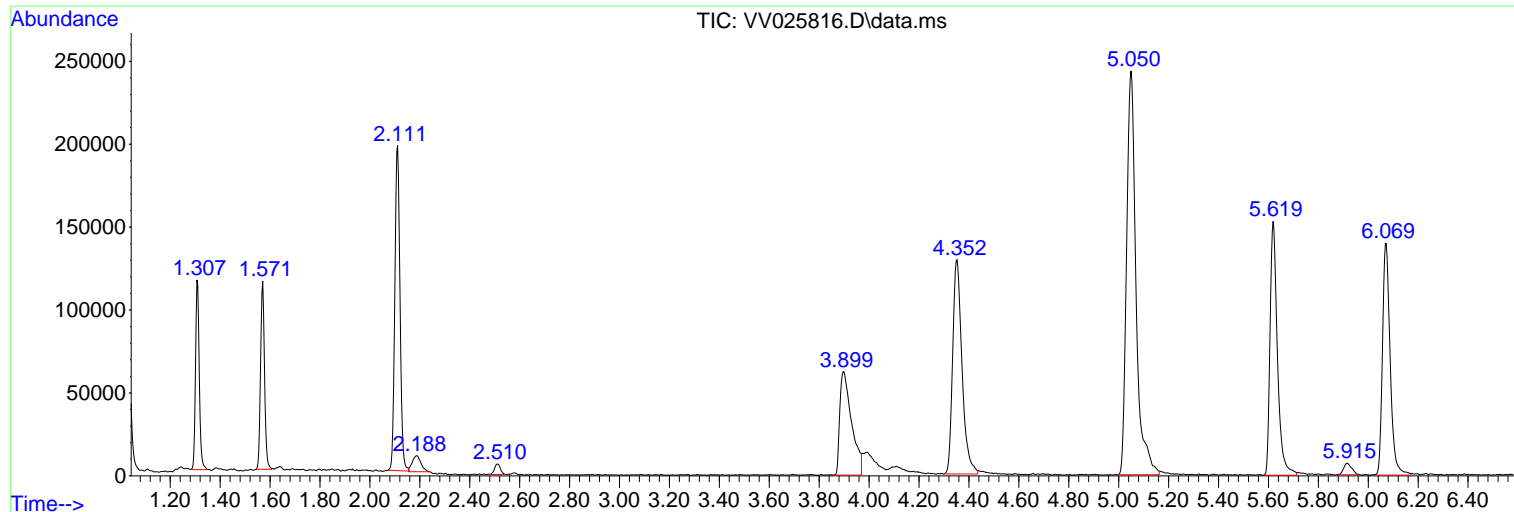
Sum of corrected areas: 5128684

Data Path : Z:\voasrv\HPCHEM1\MSVOA_V\Data\VV050322\
Data File : VV025816.D
Acq On : 04 May 2022 00:18
Operator : SY/MD
Sample : N2615-03
Misc : 25mL/MSVOA_V/WATER
ALS Vial : 37 Sample Multiplier: 1

Instrument :
MSVOA_V
ClientSampleId :
BH0D7

Quant Method : Z:\voasrv\HPCHEM1\MSVOA_V\Method\SFAMVTR050322WMA.M
Quant Title : TRACE VOA SFAM1.0

TIC Library : C:\Database\NIST20.L
TIC Integration Parameters: LSCINT.P



Data Path : Z:\voasrv\HPCHEM1\MSVOA_V\Data\VV050322\
 Data File : VV025816.D
 Acq On : 04 May 2022 00:18
 Operator : SY/MD
 Sample : N2615-03
 Misc : 25mL/MSVOA_V/WATER
 ALS Vial : 37 Sample Multiplier: 1

Instrument :
 MSVOA_V
 ClientSampleId :
 BH0D7

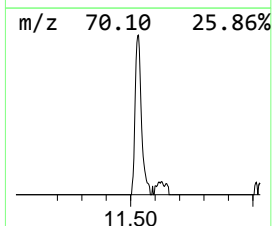
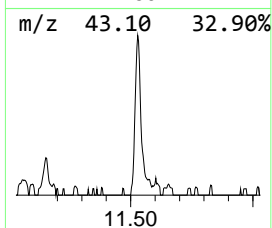
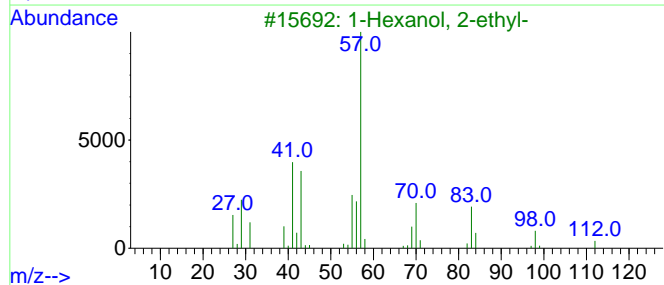
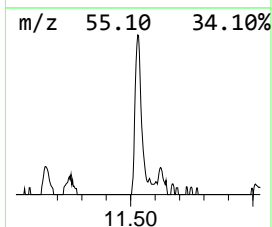
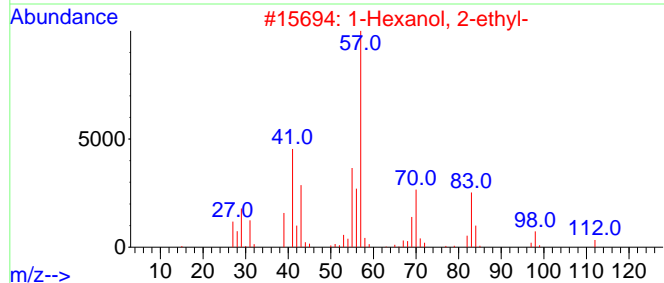
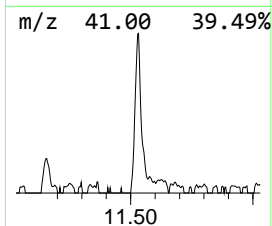
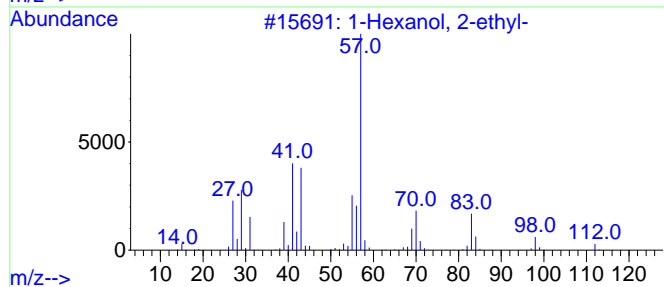
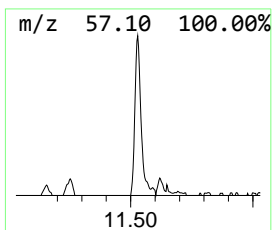
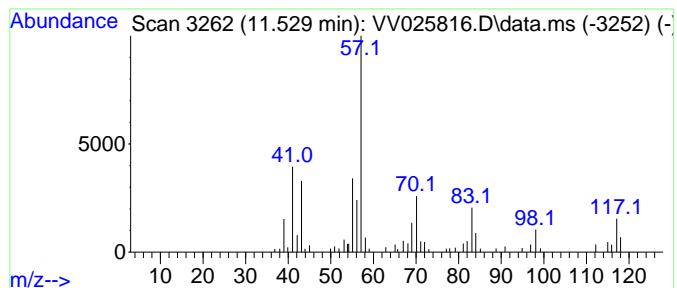
Quant Method : Z:\voasrv\HPCHEM1\MSVOA_V\Method\SFAMVTR050322WMA.M
 Quant Title : TRACE VOA SFAM1.0

TIC Library : C:\Database\NIST20.L
 TIC Integration Parameters: LSCINT.P

 Peak Number 2 1-Hexanol, 2-ethyl- Concentration Rank 2

R.T.	EstConc	Area	Relative to ISTD	R.T.
11.529	0.80 ug/L	61949	1,4-Dichlorobenzene-d4	11.249

Hit#	of 5	Tentative ID	MW	MolForm	CAS#	Qual
1		1-Hexanol, 2-ethyl-	130	C8H18O	000104-76-7	72
2		1-Hexanol, 2-ethyl-	130	C8H18O	000104-76-7	72
3		1-Hexanol, 2-ethyl-	130	C8H18O	000104-76-7	72
4		1-Hexanol, 2-ethyl-	130	C8H18O	000104-76-7	72
5		1-Hexanol, 2-ethyl-	130	C8H18O	000104-76-7	59



Data Path : Z:\voasrv\HPCHEM1\MSVOA_V\Data\VV050322\
Data File : VV025816.D
Acq On : 04 May 2022 00:18
Operator : SY/MD
Sample : N2615-03
Misc : 25mL/MSVOA_V/WATER
ALS Vial : 37 Sample Multiplier: 1

Instrument :
MSVOA_V
ClientSampleId :
BH0D7

Quant Method : Z:\voasrv\HPCHEM1\MSVOA_V\Method\SFAMVTR050322WMA.M
Quant Title : TRACE VOA SFAM1.0

TIC Library : C:\Database\NIST0.L
TIC Integration Parameters: LSCINT.P

TIC Top Hit name	RT	EstConc	Units	Response	--Internal Standard--			
					#	RT	Resp	Conc
1-Hexanol, 2-et...	11.529	0.8	ug/L	61949	3	11.249	386077	5.0