

Data Path : Z:\voasrv\HPCHEM1\MSVOA_V\Data\VV050422\
 Data File : VV025846.D
 Acq On : 04 May 2022 13:57
 Operator : SY/MD
 Sample : N2615-04
 Misc : 25mL/MSVOA_V/WATER
 ALS Vial : 10 Sample Multiplier: 1

Instrument :
 MSVOA_V
ClientSampleId :
 VHBLK001

Quant Time: May 05 04:58:11 2022
 Quant Method : Z:\voasrv\HPCHEM1\MSVOA_V\Method\SFAMVTR050322WMA.M
 Quant Title : TRACE VOA SFAM1.0
 QLast Update : Thu May 05 04:55:53 2022
 Response via : Initial Calibration

Compound	R.T.	QIon	Response	Conc	Units	Dev(Min)

Internal Standards						
1) 1,4-Difluorobenzene	5.619	114	140617	5.000	ug/L	0.00
28) Chlorobenzene-d5	8.850	117	145649	5.000	ug/L	0.00
58) 1,4-Dichlorobenzene-d4	11.249	152	66538	5.000	ug/L	0.00
System Monitoring Compounds						
4) Vinyl Chloride-d3	1.310	65	62964	4.085	ug/L	0.00
Spiked Amount	5.000	Range 40 - 130	Recovery =	81.800%		
7) Chloroethane-d5	1.571	69	62205	4.588	ug/L	0.00
Spiked Amount	5.000	Range 65 - 130	Recovery =	91.800%		
11) 1,1-Dichloroethene-d2	2.111	63	96404	3.293	ug/L	0.00
Spiked Amount	5.000	Range 60 - 125	Recovery =	65.800%		
20) 2-Butanone-d5	3.899	46	105028	49.792	ug/L	0.01
Spiked Amount	50.000	Range 40 - 130	Recovery =	99.580%		
24) Chloroform-d	4.352	84	110461	4.785	ug/L	0.00
Spiked Amount	5.000	Range 70 - 125	Recovery =	95.600%		
26) 1,2-Dichloroethane-d4	5.034	65	51404	5.031	ug/L	0.00
Spiked Amount	5.000	Range 70 - 130	Recovery =	100.600%		
32) Benzene-d6	5.050	84	214457	4.585	ug/L	0.00
Spiked Amount	5.000	Range 70 - 125	Recovery =	91.800%		
36) 1,2-Dichloropropane-d6	6.072	67	65825	4.785	ug/L	0.00
Spiked Amount	5.000	Range 60 - 140	Recovery =	95.800%		
41) Toluene-d8	7.317	98	171819	4.061	ug/L	0.00
Spiked Amount	5.000	Range 70 - 130	Recovery =	81.200%		
43) trans-1,3-Dichloroprop...	7.625	79	18317	4.206	ug/L	0.00
Spiked Amount	5.000	Range 55 - 130	Recovery =	84.200%		
46) 2-Hexanone-d5	8.088	63	77272	45.530	ug/L	0.00
Spiked Amount	50.000	Range 45 - 130	Recovery =	91.060%		
56) 1,1,2,2-Tetrachloroeth...	10.214	84	41496	4.778	ug/L	0.00
Spiked Amount	5.000	Range 65 - 120	Recovery =	95.600%		
66) 1,2-Dichlorobenzene-d4	11.622	152	58165	4.984	ug/L	0.00
Spiked Amount	5.000	Range 80 - 120	Recovery =	99.600%		

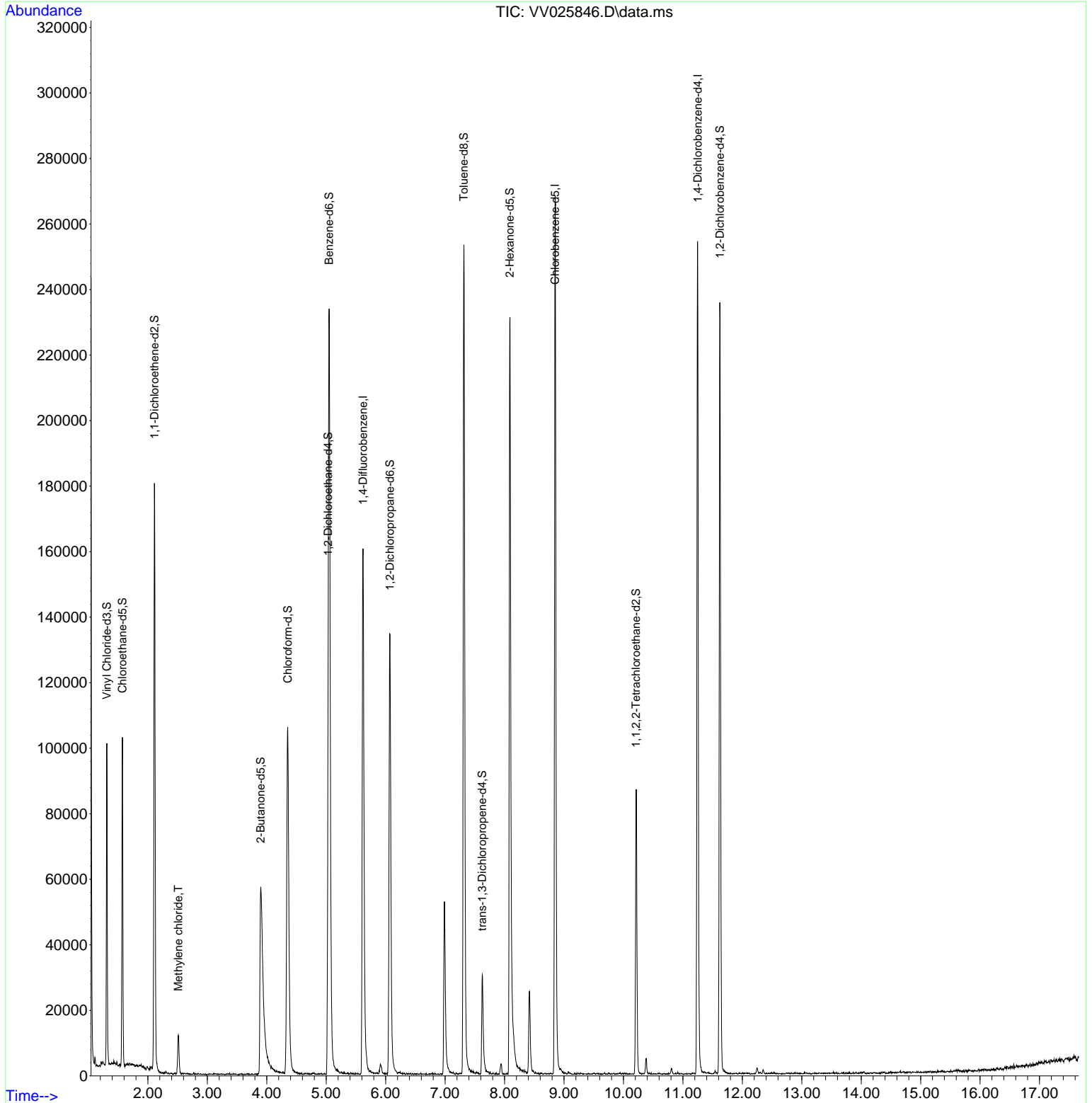
Target Compounds						Qvalue
16) Methylene chloride	2.513	84	4955	0.377	ug/L	94

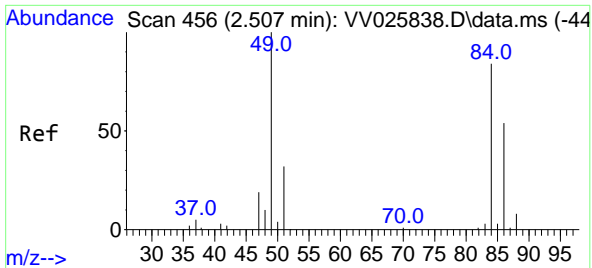
(#) = qualifier out of range (m) = manual integration (+) = signals summed

Data Path : Z:\voasrv\HPCHEM1\MSVOA_V\Data\VV050422\
 Data File : VV025846.D
 Acq On : 04 May 2022 13:57
 Operator : SY/MD
 Sample : N2615-04
 Misc : 25mL/MSVOA_V/WATER
 ALS Vial : 10 Sample Multiplier: 1

Instrument :
 MSVOA_V
 ClientSampleId :
 VHBLK001

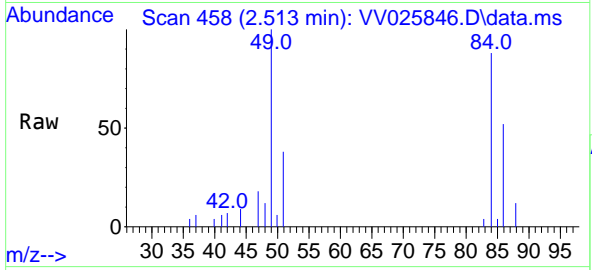
Quant Time: May 05 04:58:11 2022
 Quant Method : Z:\voasrv\HPCHEM1\MSVOA_V\Method\SFAMVTR050322WMA.M
 Quant Title : TRACE VOA SFAM1.0
 QLast Update : Thu May 05 04:55:53 2022
 Response via : Initial Calibration





#16
 Methylene chloride
 Concen: 0.377 ug/L
 RT: 2.513 min Scan# 41
 Delta R.T. 0.006 min
 Lab File: VV025846.D
 Acq: 04 May 2022 13:57

Instrument : MSVOA_V
 ClientSampleId : VHBLK001



Tgt Ion: 84 Resp: 4955

Ion	Ratio	Lower	Upper
84	100		
86	59.5	45.9	85.3
49	114.2	76.6	142.3

