

Data Path : Z:\voasrv\HPCHEM1\MSVOA_V\Data\VV050422\
 Data File : VV025841.D
 Acq On : 04 May 2022 11:59
 Operator : SY/MD
 Sample : N2678-11
 Misc : 25mL/MSVOA_V/WATER
 ALS Vial : 5 Sample Multiplier: 1

Instrument :
 MSVOA_V
 ClientSampleId :
 BH0E2

Integration Parameters: rteint.p

Integrator: RTE
 Smoothing : ON Filtering: 5
 Sampling : 1 Min Area: 3 % of largest Peak
 Start Thrs: 0.1 Max Peaks: 100
 Stop Thrs : 0 Peak Location: TOP

If leading or trailing edge < 100 prefer < Baseline drop else tangent >
 Peak separation: 5

Method : Z:\voasrv\HPCHEM1\MSVOA_V\Method\SFAMVTR050322WMA.M
 Title : TRACE VOA SFAM1.0

Signal : TIC: VV025841.D\data.ms

peak #	R.T. min	first scan	max scan	last scan	PK TY	peak height	corr. area	corr. % max.	% of total
1	1.307	75	83	96	rBV	109771	112486	18.23%	2.221%
2	1.568	156	164	177	rBV	102696	117983	19.12%	2.330%
3	2.108	322	332	347	rBV	186605	269324	43.64%	5.318%
4	2.510	447	457	467	rBV	6155	10246	1.66%	0.202%
5	3.908	880	892	916	rBV	42039	165742	26.85%	3.273%
6	4.092	939	949	976	rVB3	16409	52082	8.44%	1.028%
7	4.352	1013	1030	1064	rBV	119792	327923	53.13%	6.475%
8	5.050	1229	1247	1285	rBV2	235080	617191	100.00%	12.187%
9	5.619	1413	1424	1461	rBV	175070	363093	58.83%	7.170%
10	5.911	1506	1515	1524	rBV	3844	8593	1.39%	0.170%
11	6.069	1550	1564	1586	rBV	134383	281644	45.63%	5.561%
12	6.989	1839	1850	1874	rBV2	53256	102886	16.67%	2.032%
13	7.317	1939	1952	1969	rBV	255997	453753	73.52%	8.960%
14	7.394	1969	1976	1996	rVB	19413	38642	6.26%	0.763%
15	7.625	2037	2048	2070	rBV2	30697	57802	9.37%	1.141%
16	8.091	2182	2193	2229	rBV	227015	449388	72.81%	8.874%
17	8.249	2234	2242	2259	rVB4	13588	26731	4.33%	0.528%
18	8.850	2418	2429	2447	rBV	284487	470597	76.25%	9.293%
19	9.149	2512	2522	2531	rBV4	4554	8240	1.34%	0.163%
20	9.548	2635	2646	2654	rBV4	6102	10017	1.62%	0.198%
21	10.030	2783	2796	2807	rBV6	6549	14329	2.32%	0.283%
22	10.214	2839	2853	2869	rBV	87109	137697	22.31%	2.719%
23	10.506	2934	2944	2950	rBV5	5877	9159	1.48%	0.181%
24	10.918	3060	3072	3085	rBV4	5849	9293	1.51%	0.184%
25	11.152	3137	3145	3154	rBV6	5875	9623	1.56%	0.190%
26	11.249	3164	3175	3195	rBV	289229	445130	72.12%	8.790%
27	11.529	3252	3262	3276	rBV3	29648	53843	8.72%	1.063%
28	11.622	3280	3291	3309	rVB	243038	382429	61.96%	7.552%
29	12.345	3506	3516	3527	rBV4	20563	32210	5.22%	0.636%
30	12.670	3604	3617	3627	rBV4	9094	14419	2.34%	0.285%
31	13.506	3869	3877	3889	rBV2	7245	11718	1.90%	0.231%

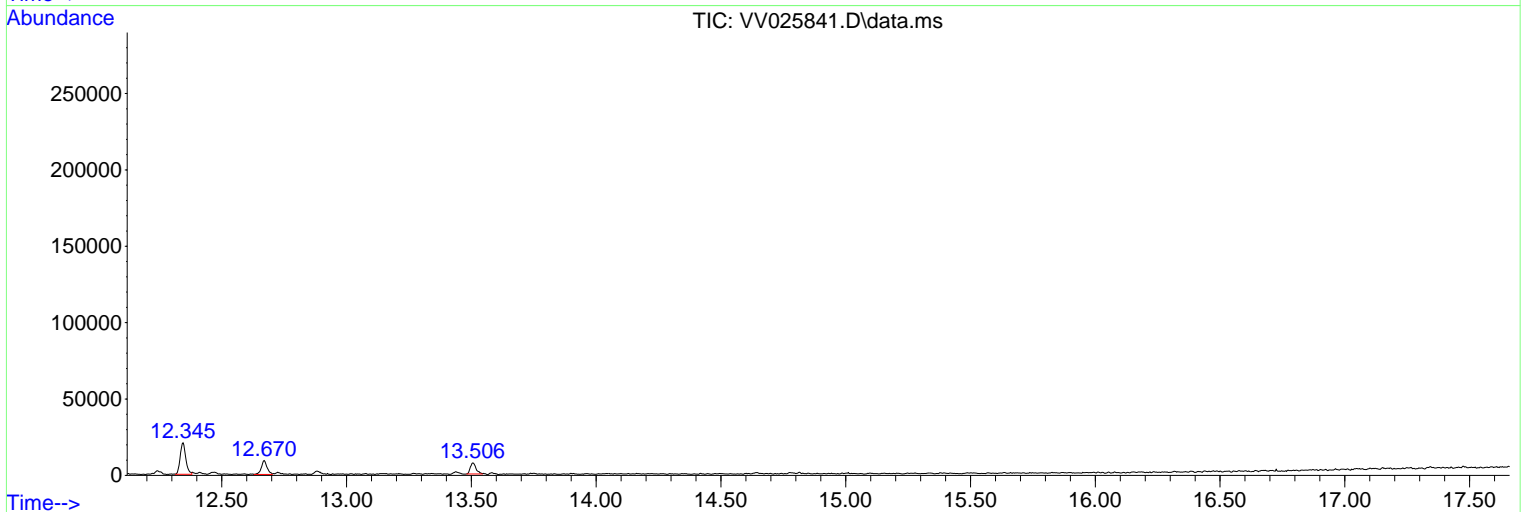
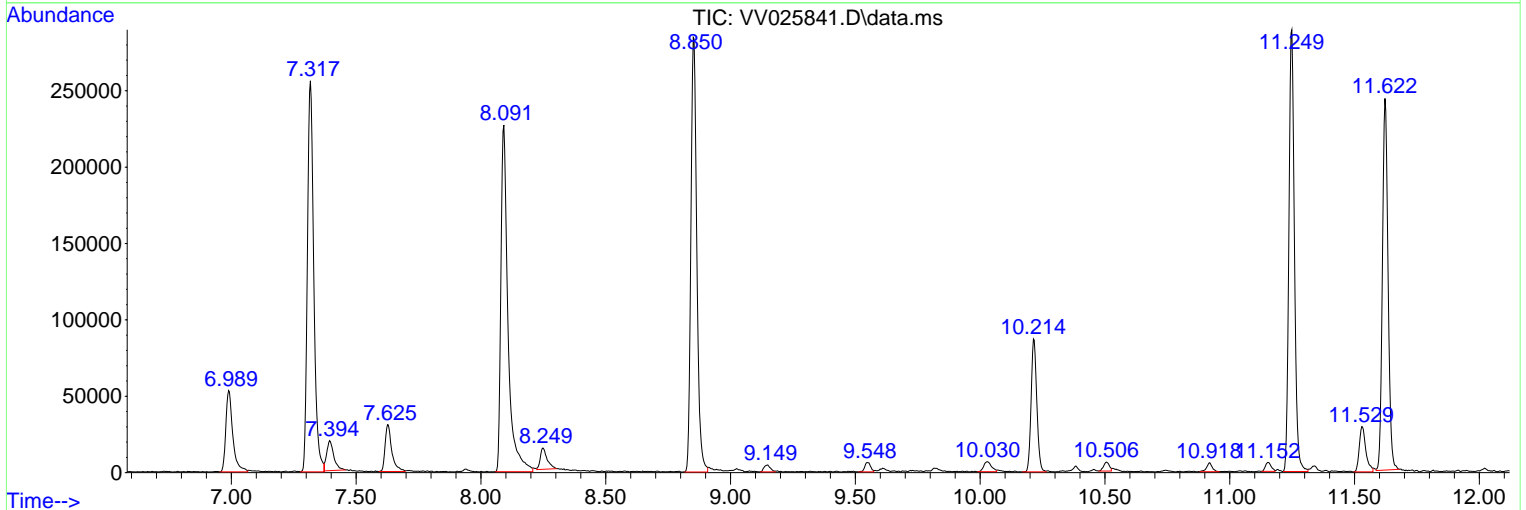
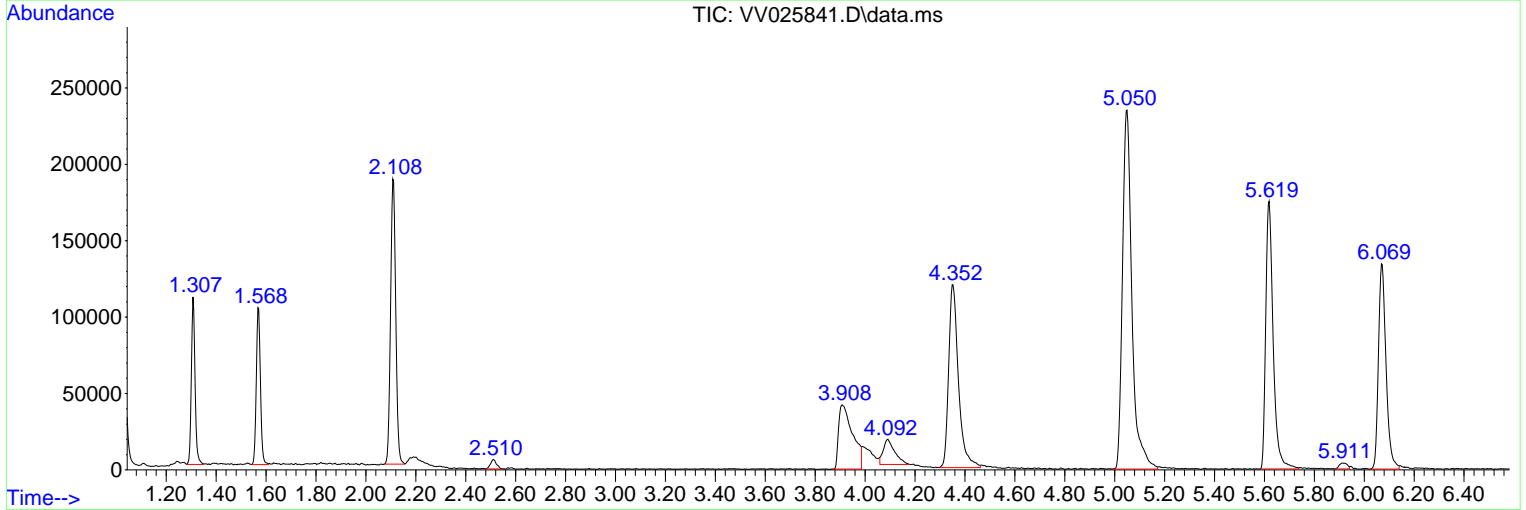
Sum of corrected areas: 5064213

Data Path : Z:\voasrv\HPCHEM1\MSVOA_V\Data\VV050422\
 Data File : VV025841.D
 Acq On : 04 May 2022 11:59
 Operator : SY/MD
 Sample : N2678-11
 Misc : 25mL/MSVOA_V/WATER
 ALS Vial : 5 Sample Multiplier: 1

Instrument :
 MSVOA_V
 ClientSampleId :
 BH0E2

Quant Method : Z:\voasrv\HPCHEM1\MSVOA_V\Method\SFAMVTR050322WMA.M
 Quant Title : TRACE VOA SFAM1.0

TIC Library : C:\Database\NIST20.L
 TIC Integration Parameters: LSCINT.P



Data Path : Z:\voasrv\HPCHEM1\MSVOA_V\Data\VV050422\
 Data File : VV025841.D
 Acq On : 04 May 2022 11:59
 Operator : SY/MD
 Sample : N2678-11
 Misc : 25mL/MSVOA_V/WATER
 ALS Vial : 5 Sample Multiplier: 1

Instrument :
 MSVOA_V
 ClientSampleId :
 BH0E2

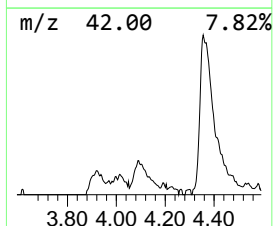
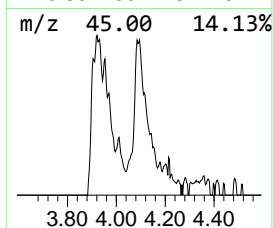
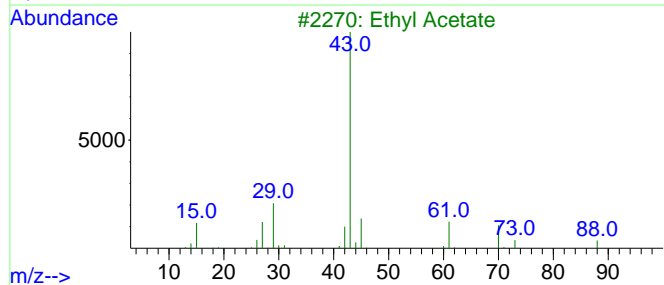
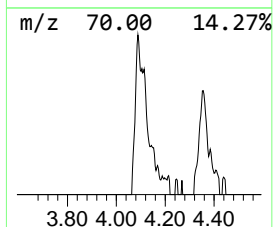
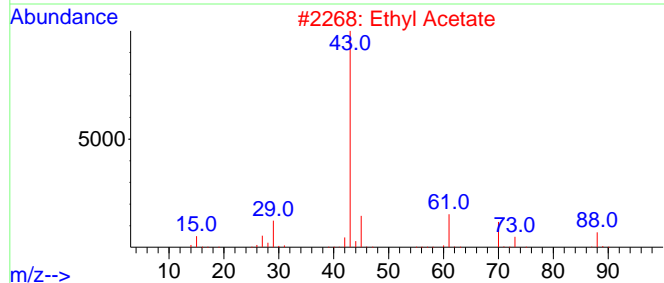
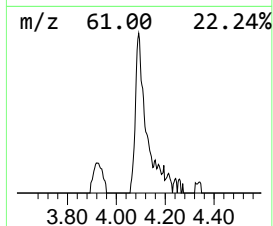
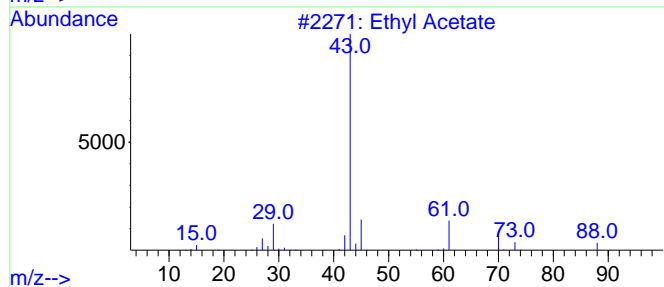
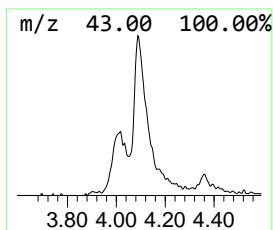
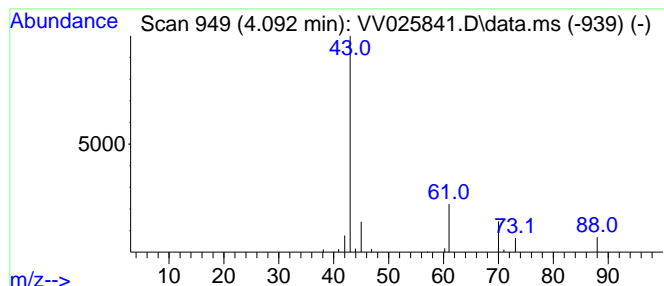
Quant Method : Z:\voasrv\HPCHEM1\MSVOA_V\Method\SFAMVTR050322WMA.M
 Quant Title : TRACE VOA SFAM1.0

TIC Library : C:\Database\NIST20.L
 TIC Integration Parameters: LSCINT.P

 Peak Number 1 Ethyl Acetate Concentration Rank 2

R.T.	EstConc	Area	Relative to ISTD	R.T.
4.092	0.72 ug/L	52082	1,4-Difluorobenzene	5.619

Hit#	of	5	Tentative ID	MW	MolForm	CAS#	Qual
1			Ethyl Acetate	88	C4H8O2	000141-78-6	64
2			Ethyl Acetate	88	C4H8O2	000141-78-6	59
3			Ethyl Acetate	88	C4H8O2	000141-78-6	58
4			CH3C(O)CH2CH2OH	88	C4H8O2	000590-90-9	53
5			Ethyl Acetate	88	C4H8O2	000141-78-6	45



Data Path : Z:\voasrv\HPCHEM1\MSVOA_V\Data\VV050422\
 Data File : VV025841.D
 Acq On : 04 May 2022 11:59
 Operator : SY/MD
 Sample : N2678-11
 Misc : 25mL/MSVOA_V/WATER
 ALS Vial : 5 Sample Multiplier: 1

Instrument :
 MSVOA_V
 ClientSampleId :
 BH0E2

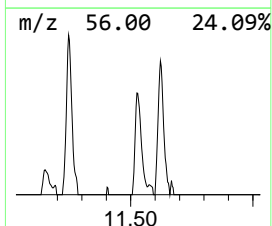
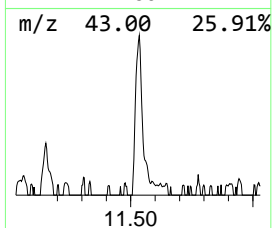
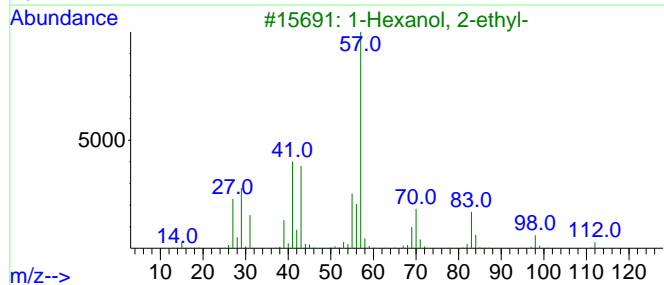
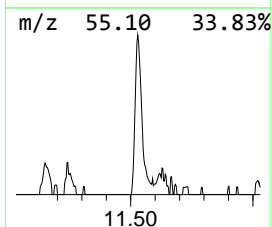
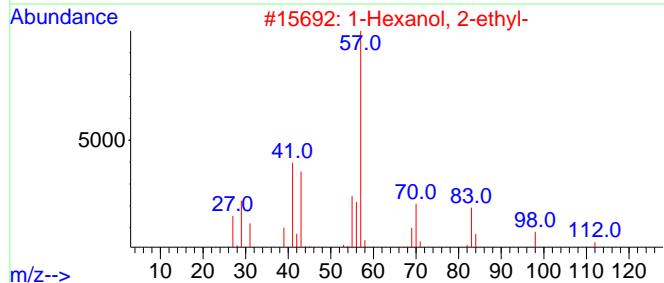
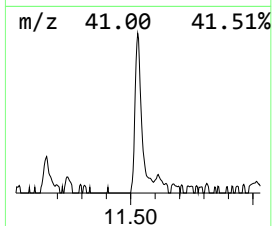
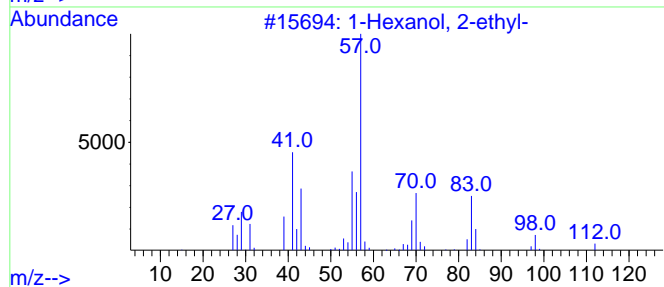
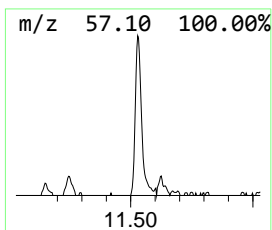
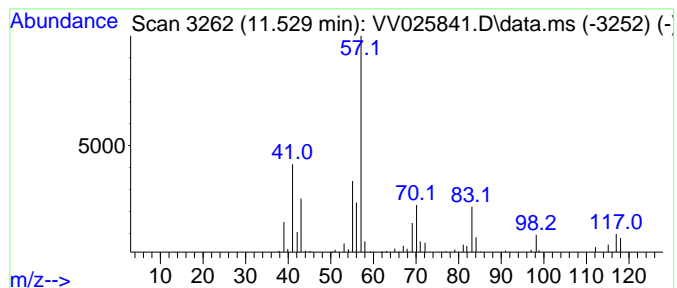
Quant Method : Z:\voasrv\HPCHEM1\MSVOA_V\Method\SFAMVTR050322WMA.M
 Quant Title : TRACE VOA SFAM1.0

TIC Library : C:\Database\NIST20.L
 TIC Integration Parameters: LSCINT.P

 Peak Number 3 1-Hexanol, 2-ethyl- Concentration Rank 3

R.T.	EstConc	Area	Relative to ISTD	R.T.
11.529	0.60 ug/L	53843	1,4-Dichlorobenzene-d4	11.249

Hit#	of	5	Tentative ID	MW	MolForm	CAS#	Qual
1			1-Hexanol, 2-ethyl-	130	C8H18O	000104-76-7	80
2			1-Hexanol, 2-ethyl-	130	C8H18O	000104-76-7	72
3			1-Hexanol, 2-ethyl-	130	C8H18O	000104-76-7	72
4			1-Hexanol, 2-ethyl-	130	C8H18O	000104-76-7	64
5			1-Hexanol, 2-ethyl-	130	C8H18O	000104-76-7	64



Data Path : Z:\voasrv\HPCHEM1\MSVOA_V\Data\VV050422\
Data File : VV025841.D
Acq On : 04 May 2022 11:59
Operator : SY/MD
Sample : N2678-11
Misc : 25mL/MSVOA_V/WATER
ALS Vial : 5 Sample Multiplier: 1

Instrument :
MSVOA_V
ClientSampleId :
BH0E2

Quant Method : Z:\voasrv\HPCHEM1\MSVOA_V\Method\SFAMVTR050322WMA.M
Quant Title : TRACE VOA SFAM1.0

TIC Library : C:\Database\NIST0.L
TIC Integration Parameters: LSCINT.P

TIC Top Hit name	RT	EstConc	Units	Response	--Internal Standard--			
					#	RT	Resp	Conc
Ethyl Acetate	4.092	0.7	ug/L	52082	1	5.619	363093	5.0
1-Hexanol, 2-et...	11.529	0.6	ug/L	53843	3	11.249	445130	5.0