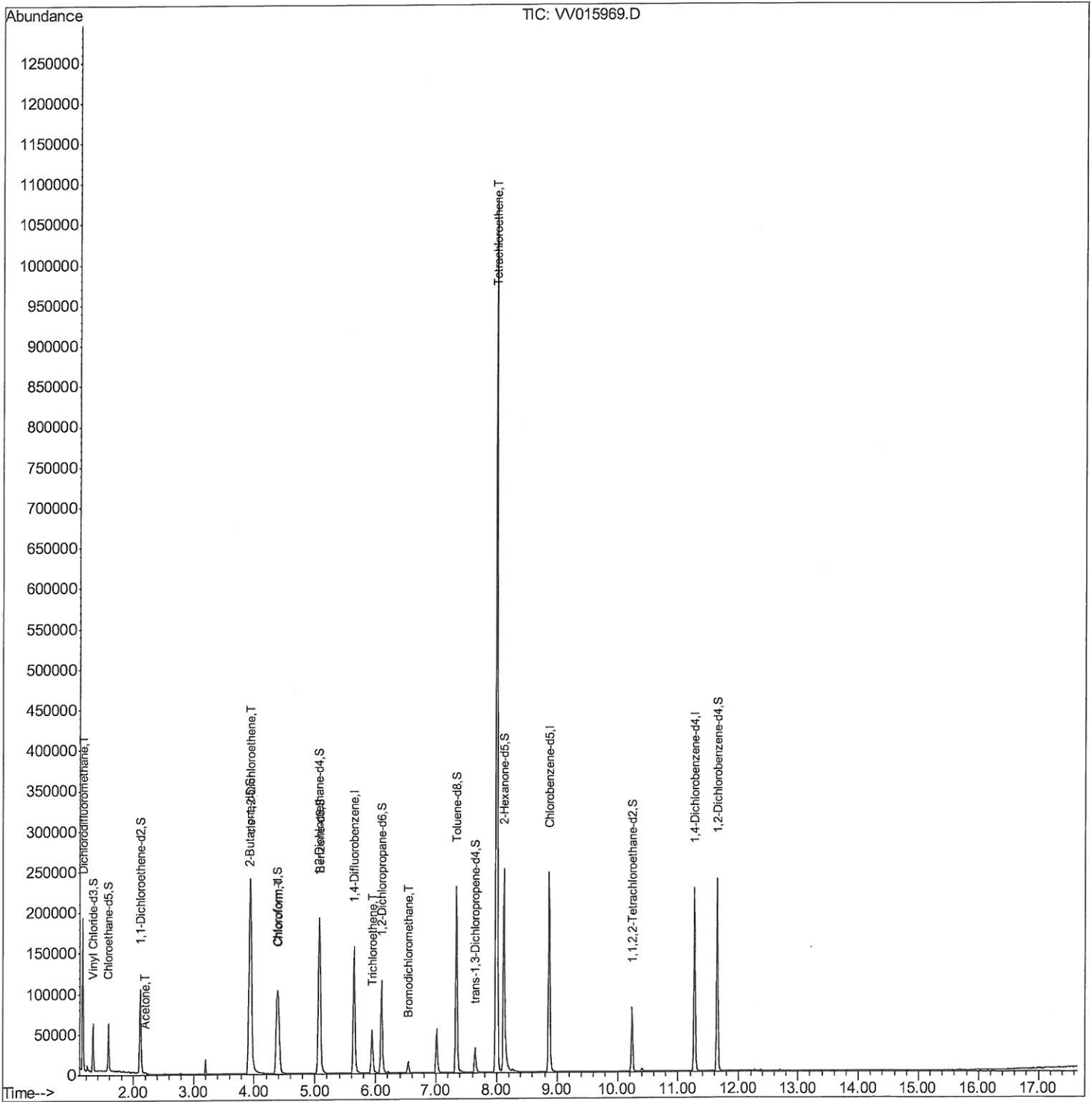


Data Path : Z:\VOASRV\HPCHEM1\MSVOA V\DATA\VV050820\
 Data File : VV015969.D
 Acq On : 08 May 2020 16:43
 Operator : SY/MD
 Sample : L2520-08
 Misc : 25.0mL/MSVOA V/WATER
 ALS Vial : 20 Sample Multiplier: 1

Instrument :
 MSVOA_V
 ClientSampled :
 H41Y3

Manual Integrations
APPROVED
 apatel
 5/11/2020 12:51:28 PM

Quant Time: May 09 03:13:38 2020
 Quant Method : Z:\VOASRV\HPCHEM1\MSVOA_V\METHOD\SOMVTR050720WMA.M
 Quant Title : TRACE VOA SOM01.0
 QLast Update : Sat May 09 00:44:25 2020
 Response via : Initial Calibration



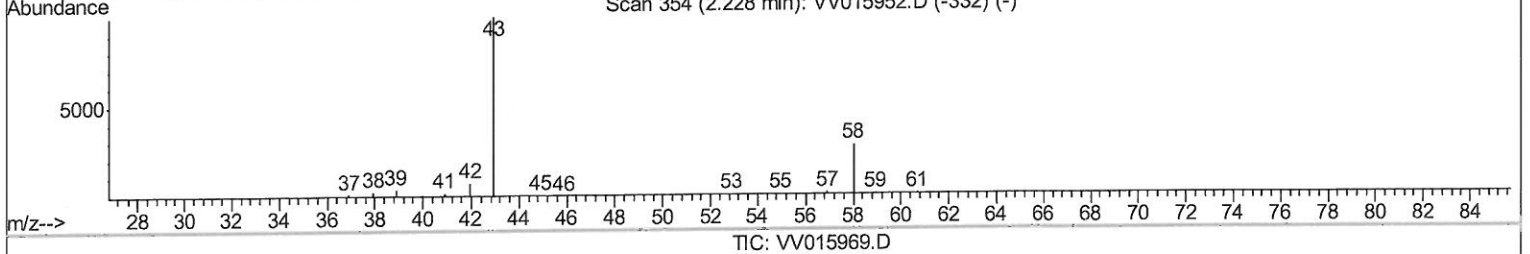
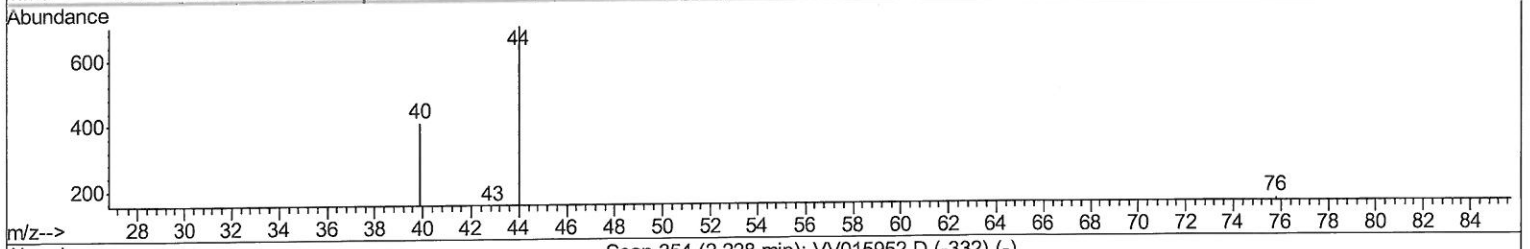
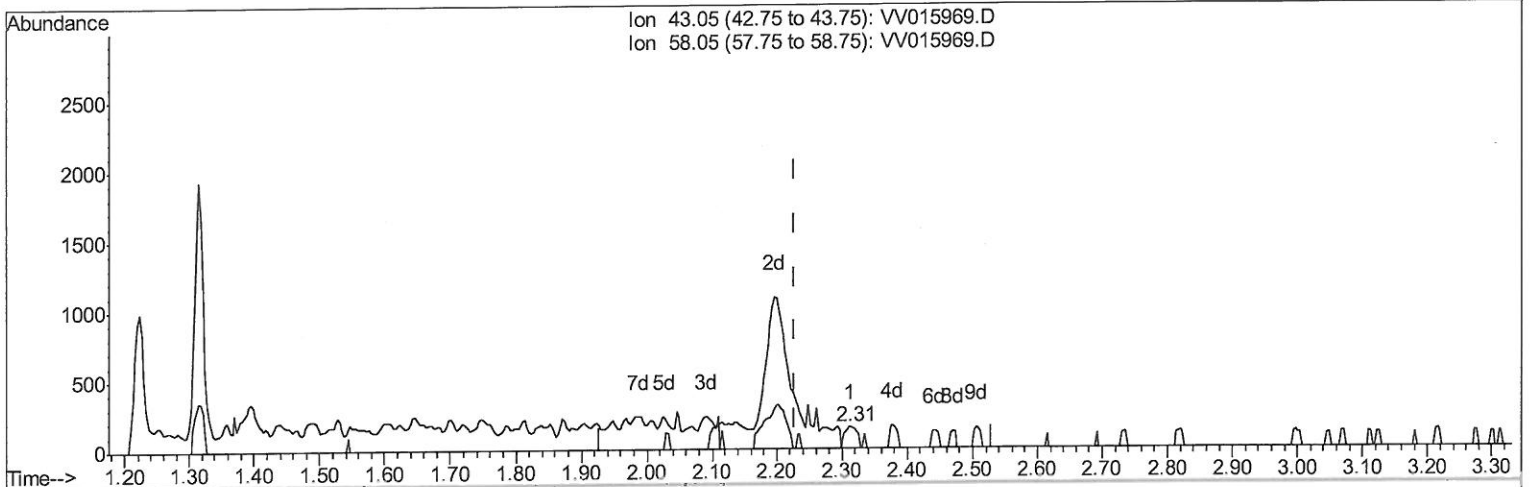
Quantitation Report (Qedit)

Data Path : Z:\VOASRV\HPCHEM1\MSVOA V\DATA\VV050820\
 Data File : VV015969.D
 Acq On : 08 May 2020 16:43
 Operator : SY/MD
 Sample : L2520-08
 Misc : 25.0mL/MSVOA V/WATER
 ALS Vial : 20 Sample Multiplier: 1

Instrument :
 MSVOA_V
 ClientSampled :
 H41Y3

Manual Integrations
APPROVED
 apatel
 5/11/2020 12:51:28 PM

Quant Time: May 09 00:49:54 2020
 Quant Method : Z:\VOASRV\HPCHEM1\MSVOA_V\METHOD\SOMVTR050720WMA.M
 Quant Title : TRACE VOA SOM01.0
 QLast Update : Sat May 09 00:44:25 2020
 Response via : Initial Calibration



(13) Acetone (T)
 2.312min (+0.084) 0.16ug/L
 response 202

Ion	Exp%	Act%
43.05	100	100
58.05	15.40	20.30
0.00	0.00	0.00
0.00	0.00	0.00

Quantitation Report (Qedit)

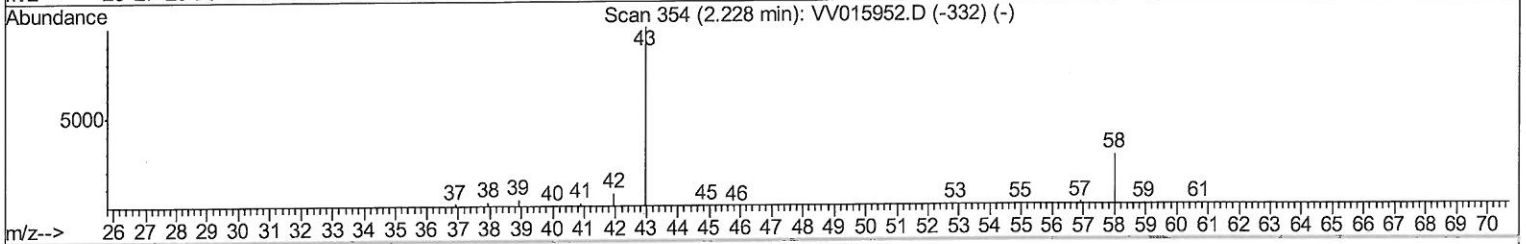
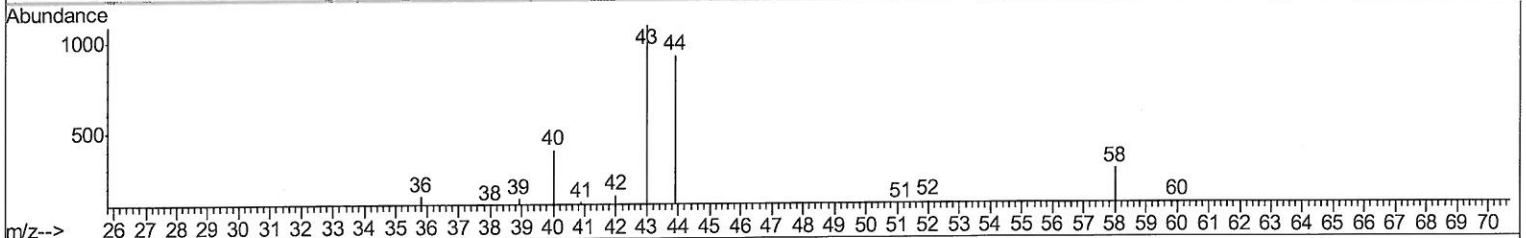
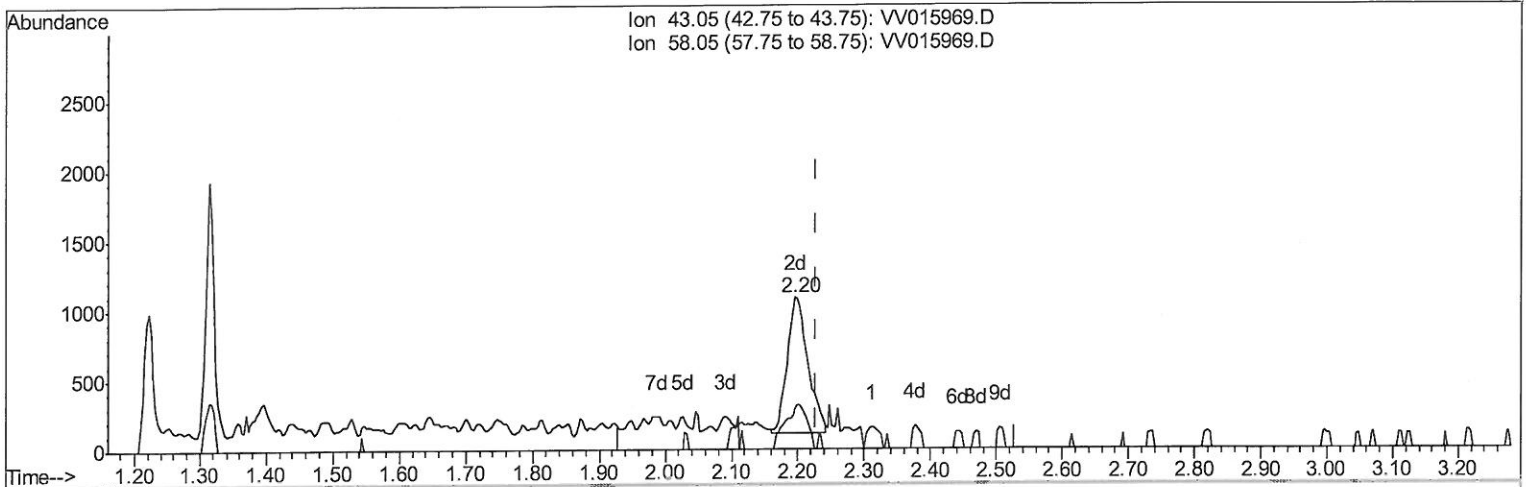
Data Path : Z:\VOASRV\HPCHEM1\MSVOA V\DATA\VV050820\
 Data File : VV015969.D
 Acq On : 08 May 2020 16:43
 Operator : SY/MD
 Sample : L2520-08
 Misc : 25.0mL/MSVOA V/WATER
 ALS Vial : 20 Sample Multiplier: 1

Instrument :
 MSVOA_V
 ClientSampled :
 H41Y3

Manual Integrations
 APPROVED

apatel
 5/11/2020 12:51:28 PM

Quant Time: May 09 00:49:54 2020
 Quant Method : Z:\VOASRV\HPCHEM1\MSVOA_V\METHOD\SOMVTR050720WMA.M
 Quant Title : TRACE VOA SOM01.0
 QLast Update : Sat May 09 00:44:25 2020
 Response via : Initial Calibration



TIC: VV015969.D

(13) Acetone (T)
 2.196min (-0.032) 1.66ug/L m
 response 2129

Ion	Exp%	Act%
43.05	100	100
58.05	15.40	1.93
0.00	0.00	0.00
0.00	0.00	0.00

SY MD
5/11/20

Data Path : Z:\VOASRV\HPCHEM1\MSVOA V\DATA\VV050820\
 Data File : VV015969.D
 Acq On : 08 May 2020 16:43
 Operator : SY/MD
 Sample : L2520-08
 Misc : 25.0mL/MSVOA V/WATER
 ALS Vial : 20 Sample Multiplier: 1

Instrument :
 MSVOA_V
 Client Sampled :
 H41Y3

Manual Integrations
 APPROVED

apatel
 5/11/2020 12:51:28 PM

Quant Time: May 09 03:13:38 2020
 Quant Method : Z:\VOASRV\HPCHEM1\MSVOA_V\METHOD\SOMVTR050720WMA.M
 Quant Title : TRACE VOA SOM01.0
 QLast Update : Sat May 09 00:44:25 2020
 Response via : Initial Calibration

Internal Standards	R.T.	QIon	Response	Conc	Units	Dev(Min)
1) 1,4-Difluorobenzene	5.64	114	125503	5.00	ug/L	0.00
28) Chlorobenzene-d5	8.87	117	122121	5.00	ug/L	0.00
61) 1,4-Dichlorobenzene-d4	11.27	152	53162	5.00	ug/L	0.00

System Monitoring Compounds

4) Vinyl Chloride-d3	1.32	65	33695	4.95	ug/L	0.00
Spiked Amount	5.000	Range	40 - 130	Recovery	=	99.00%
7) Chloroethane-d5	1.58	69	34356	5.32	ug/L	0.00
Spiked Amount	5.000	Range	65 - 130	Recovery	=	106.40%
11) 1,1-Dichloroethene-d2	2.12	63	56243	3.84	ug/L	0.00
Spiked Amount	5.000	Range	60 - 125	Recovery	=	76.80%
20) 2-Butanone-d5	3.92	46	116016	59.74	ug/L	-0.02
Spiked Amount	50.000	Range	40 - 130	Recovery	=	119.48%
24) Chloroform-d	4.38	84	76887	5.17	ug/L	0.00
Spiked Amount	5.000	Range	70 - 125	Recovery	=	103.40%
26) 1,2-Dichloroethane-d4	5.06	65	48621	5.70	ug/L	0.00
Spiked Amount	5.000	Range	70 - 130	Recovery	=	114.00%
32) Benzene-d6	5.08	84	163379	5.62	ug/L	0.00
Spiked Amount	5.000	Range	70 - 125	Recovery	=	112.40%
36) 1,2-Dichloropropane-d6	6.10	67	51508	5.81	ug/L	0.00
Spiked Amount	5.000	Range	60 - 140	Recovery	=	116.20%
41) Toluene-d8	7.34	98	147011	5.35	ug/L	0.00
Spiked Amount	5.000	Range	70 - 130	Recovery	=	107.00%
45) trans-1,3-Dichloropropene-	7.65	79	18257	5.25	ug/L	0.00
Spiked Amount	5.000	Range	55 - 130	Recovery	=	105.00%
48) 2-Hexanone-d5	8.11	63	84616	55.33	ug/L	0.00
Spiked Amount	50.000	Range	45 - 130	Recovery	=	110.66%
59) 1,1,2,2-Tetrachloroethane-	10.24	84	35159	5.64	ug/L	0.00
Spiked Amount	5.000	Range	65 - 120	Recovery	=	112.80%
65) 1,2-Dichlorobenzene-d4	11.65	152	55961	6.49	ug/L	0.00
Spiked Amount	5.000	Range	80 - 120	Recovery	=	129.80%#

Target Compounds

Target Compounds	R.T.	QIon	Response	Conc	Units	Ovalue
2) Dichlorodifluoromethane	1.14	85	2072	0.215	ug/L	95
13) Acetone	2.20	43	2129m	1.662	ug/L	95
22) cis-1,2-Dichloroethene	3.94	96	109618	13.719	ug/L	100
25) Chloroform	4.41	83	69669	4.303	ug/L	98
34) Trichloroethene	5.94	95	18506	2.110	ug/L	90
38) Bromodichloromethane	6.54	83	8902	0.898	ug/L #	96
49) Tetrachloroethene	8.00	164	217207	35.497	ug/L	99

95
 MD
 5/11/20

(#) = qualifier out of range (m) = manual integration (+) = signals summed