

Data Path : Z:\voasrv\HPCHEM1\MSVOA\_V\Data\VW051222\  
 Data File : VW025879.D  
 Acq On : 12 May 2022 13:55  
 Operator : SY/MD  
 Sample : N2746-06ME  
 Misc : 5.56g/5.0mL/100uL/5.00mL/MSVOA\_V/MEOH  
 ALS Vial : 5 Sample Multiplier: 1

Instrument :  
 MSVOA\_V  
 ClientSampleId :  
 DBSL2ME

Integration Parameters: LSCINT.P

Integrator: RTE  
 Smoothing : OFF Filtering: 5  
 Sampling : 1 Min Area: 0 % of largest Peak  
 Start Thrs: 0.2 Max Peaks: 100  
 Stop Thrs : 0 Peak Location: TOP

If leading or trailing edge < 100 prefer < Baseline drop else tangent >  
 Peak separation: 5

Method : Z:\voasrv\HPCHEM1\MSVOA\_V\Method\SFAMVLM051022WMA.M  
 Title : VOC Analysis

Signal : TIC: VW025879.D\data.ms

peak #	R.T. min	first scan	max scan	last scan	PK TY	peak height	corr. area	corr. % max.	% of total
1	1.307	76	83	97	rBV	233399	239136	17.30%	2.283%
2	1.568	157	164	181	rVB	206076	231588	16.75%	2.211%
3	2.108	322	332	354	rVB	422347	614122	44.43%	5.863%
4	2.346	402	406	408	rBV2	590	453	0.03%	0.004%
5	2.455	435	440	441	rBV3	1082	833	0.06%	0.008%
6	2.506	449	456	468	rVB3	8325	13141	0.95%	0.125%
7	2.670	503	507	508	rVB2	381	225	0.02%	0.002%
8	2.696	512	515	518	rBV2	313	264	0.02%	0.003%
9	2.770	536	538	539	rBV2	310	126	0.01%	0.001%
10	2.812	546	551	555	rBV2	396	442	0.03%	0.004%
11	2.867	565	568	573	rVB2	327	249	0.02%	0.002%
12	2.937	586	590	591	rBV	231	183	0.01%	0.002%
13	2.989	604	606	609	rBV	306	150	0.01%	0.001%
14	3.005	609	611	613	rBV	237	130	0.01%	0.001%
15	3.040	617	622	626	rBV3	585	547	0.04%	0.005%
16	3.108	641	643	647	rVB3	411	224	0.02%	0.002%
17	3.150	653	656	657	rBV	261	152	0.01%	0.001%
18	3.169	660	662	665	rVB2	304	131	0.01%	0.001%
19	3.191	665	669	671	rVB2	311	201	0.01%	0.002%
20	3.217	674	677	680	rBV2	169	126	0.01%	0.001%
21	3.381	725	728	730	rBV2	199	128	0.01%	0.001%
22	3.445	745	748	750	rBV2	328	219	0.02%	0.002%
23	3.474	755	757	759	rVB	290	129	0.01%	0.001%
24	3.497	761	764	766	rBV	224	127	0.01%	0.001%
25	3.574	787	788	791	rVB	334	140	0.01%	0.001%
26	3.619	799	802	805	rBV2	277	222	0.02%	0.002%
27	3.712	826	831	834	rBV	350	286	0.02%	0.003%
28	3.741	834	840	842	rVV3	392	279	0.02%	0.003%
29	3.770	847	849	853	rVB2	342	210	0.02%	0.002%
30	3.799	853	858	860	rBV2	329	225	0.02%	0.002%
31	3.841	868	871	874	rBV	361	220	0.02%	0.002%
32	3.902	877	890	942	rBV	59879	283199	20.49%	2.704%
33	4.342	1011	1027	1059	rBV	221321	554603	40.12%	5.295%
34	4.606	1105	1109	1112	rBV2	441	336	0.02%	0.003%
35	4.715	1140	1143	1149	rVB5	580	478	0.03%	0.005%
36	4.873	1187	1192	1196	rBV3	425	495	0.04%	0.005%

Data Path : Z:\voasrv\HPCHEM1\MSVOA\_V\Data\VW051222\  
 Data File : VW025879.D  
 Acq On : 12 May 2022 13:55  
 Operator : SY/MD  
 Sample : N2746-06ME  
 Misc : 5.56g/5.0mL/100uL/5.00mL/MSVOA\_V/MEOH  
 ALS Vial : 5 Sample Multiplier: 1

Instrument :  
 MSVOA\_V  
 ClientSampleId :  
 DBSL2ME

Integration Parameters: LSCINT.P

Integrator: RTE  
 Smoothing : OFF  
 Sampling : 1  
 Start Thrs: 0.2  
 Stop Thrs : 0

Filtering: 5  
 Min Area: 0 % of largest Peak  
 Max Peaks: 100  
 Peak Location: TOP

If leading or trailing edge < 100 prefer < Baseline drop else tangent >  
 Peak separation: 5

Method : Z:\voasrv\HPCHEM1\MSVOA\_V\Method\SFAMVLM051022WMA.M  
 Title : VOC Analysis

37	4.969	1216	1222	1225	rBV4	644	709	0.05%	0.007%
38	5.040	1228	1244	1283	rBV2	535170	1382323	100.00%	13.198%
39	5.558	1403	1405	1408	rVB2	347	199	0.01%	0.002%
40	5.612	1409	1422	1448	rBV	388338	793130	57.38%	7.572%
41	5.905	1502	1513	1532	rBV2	16061	35448	2.56%	0.338%
42	6.066	1549	1563	1593	rBV	315088	639179	46.24%	6.102%
43	6.294	1632	1634	1641	rVB3	676	603	0.04%	0.006%
44	6.320	1641	1642	1646	rVB	535	323	0.02%	0.003%
45	6.407	1662	1669	1675	rBV3	577	594	0.04%	0.006%
46	6.436	1675	1678	1679	rBV2	657	325	0.02%	0.003%
47	6.477	1689	1691	1694	rVB2	495	166	0.01%	0.002%
48	6.497	1694	1697	1701	rBV2	494	322	0.02%	0.003%
49	6.535	1704	1709	1710	rBV3	302	228	0.02%	0.002%
50	6.635	1737	1740	1741	rVV2	276	157	0.01%	0.001%
51	6.796	1788	1790	1793	rBV2	216	148	0.01%	0.001%
52	6.831	1799	1801	1803	rBV2	332	152	0.01%	0.001%
53	6.847	1805	1806	1810	rVB	470	151	0.01%	0.001%
54	6.866	1810	1812	1816	rBV2	352	238	0.02%	0.002%
55	6.982	1837	1848	1871	rBV	153433	287204	20.78%	2.742%
56	7.313	1938	1951	1972	rBV	604514	1058730	76.59%	10.108%
57	7.619	2036	2046	2077	rBV2	107890	192893	13.95%	1.842%
58	7.863	2120	2122	2125	rVB	385	239	0.02%	0.002%
59	7.879	2125	2127	2129	rBV2	353	205	0.01%	0.002%
60	7.944	2141	2147	2154	rVB4	522	691	0.05%	0.007%
61	8.088	2182	2192	2236	rBV	281938	590534	42.72%	5.638%
62	8.416	2285	2294	2305	rBV8	2821	5448	0.39%	0.052%
63	8.542	2330	2333	2337	rVB3	640	412	0.03%	0.004%
64	8.583	2343	2346	2350	rBV3	451	271	0.02%	0.003%
65	8.718	2385	2388	2391	rBV2	381	248	0.02%	0.002%
66	8.735	2391	2393	2400	rVB3	381	269	0.02%	0.003%
67	8.850	2416	2429	2457	rBV	611842	1006197	72.79%	9.607%
68	9.043	2487	2489	2491	rVB3	518	176	0.01%	0.002%
69	9.265	2556	2558	2561	rVB	435	244	0.02%	0.002%
70	9.284	2561	2564	2566	rBV	219	150	0.01%	0.001%
71	9.410	2600	2603	2606	rBV	267	234	0.02%	0.002%
72	9.484	2623	2626	2629	rBV2	330	220	0.02%	0.002%
73	9.500	2629	2631	2637	rVB3	493	332	0.02%	0.003%
74	9.551	2643	2647	2649	rBV3	648	355	0.03%	0.003%
75	9.606	2660	2664	2665	rBV2	274	186	0.01%	0.002%
76	9.680	2684	2687	2688	rBV	289	141	0.01%	0.001%

Data Path : Z:\voasrv\HPCHEM1\MSVOA\_V\Data\VV051222\  
 Data File : VV025879.D  
 Acq On : 12 May 2022 13:55  
 Operator : SY/MD  
 Sample : N2746-06ME  
 Misc : 5.56g/5.0mL/100uL/5.00mL/MSVOA\_V/MEOH  
 ALS Vial : 5 Sample Multiplier: 1

Instrument :  
 MSVOA\_V  
 ClientSampleId :  
 DBSL2ME

Integration Parameters: LSCINT.P

Integrator: RTE  
 Smoothing : OFF Filtering: 5  
 Sampling : 1 Min Area: 0 % of largest Peak  
 Start Thrs: 0.2 Max Peaks: 100  
 Stop Thrs : 0 Peak Location: TOP

If leading or trailing edge < 100 prefer < Baseline drop else tangent >  
 Peak separation: 5

Method : Z:\voasrv\HPCHEM1\MSVOA\_V\Method\SFAMVLM051022WMA.M  
 Title : VOC Analysis

77	9.706	2693	2695	2697	rVV2	398	171	0.01%	0.002%
78	9.725	2697	2701	2707	rVV2	319	336	0.02%	0.003%
79	9.796	2720	2723	2726	rBV2	479	233	0.02%	0.002%
80	9.837	2734	2736	2738	rVB2	332	154	0.01%	0.001%
81	9.998	2784	2786	2789	rBV2	414	214	0.02%	0.002%
82	10.082	2810	2812	2814	rVV2	424	284	0.02%	0.003%
83	10.124	2818	2825	2834	rBV6	2693	3906	0.28%	0.037%
84	10.214	2841	2853	2871	rBV	398845	625470	45.25%	5.972%
85	10.477	2931	2935	2942	rBV2	544	637	0.05%	0.006%
86	10.548	2954	2957	2959	rBV2	382	204	0.01%	0.002%
87	10.561	2959	2961	2962	rBV2	581	265	0.02%	0.003%
88	10.799	3031	3035	3039	rBV2	279	265	0.02%	0.003%
89	10.908	3064	3069	3070	rBV3	1468	992	0.07%	0.009%
90	11.059	3113	3116	3118	rBV	466	302	0.02%	0.003%
91	11.072	3118	3120	3130	rVB3	469	509	0.04%	0.005%
92	11.197	3157	3159	3160	rBV3	630	249	0.02%	0.002%
93	11.246	3163	3174	3202	rVV	611689	938021	67.86%	8.956%
94	11.622	3279	3291	3310	rBV	615098	956365	69.19%	9.131%
95	12.394	3528	3531	3532	rBV	291	165	0.01%	0.002%
96	12.840	3668	3670	3674	rVB2	721	405	0.03%	0.004%
97	13.014	3722	3724	3727	rBV2	320	228	0.02%	0.002%
98	13.146	3762	3765	3770	rBV4	489	443	0.03%	0.004%
99	13.593	3902	3904	3908	rVB	649	315	0.02%	0.003%
100	14.689	4243	4245	4248	rBV2	829	465	0.03%	0.004%

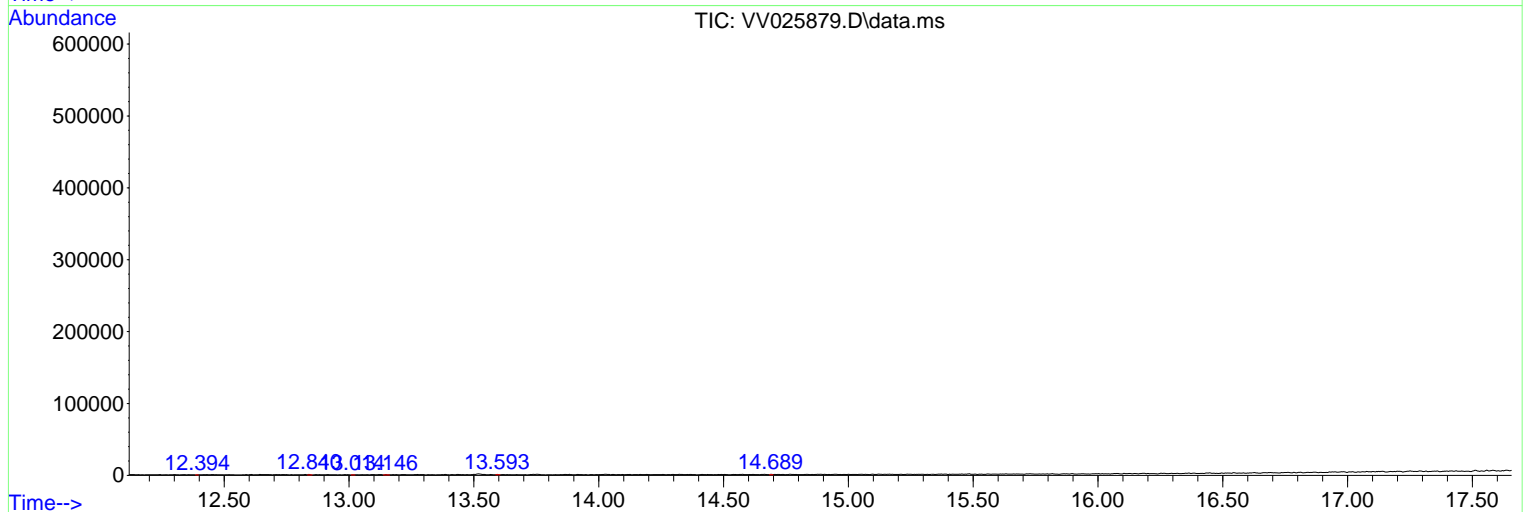
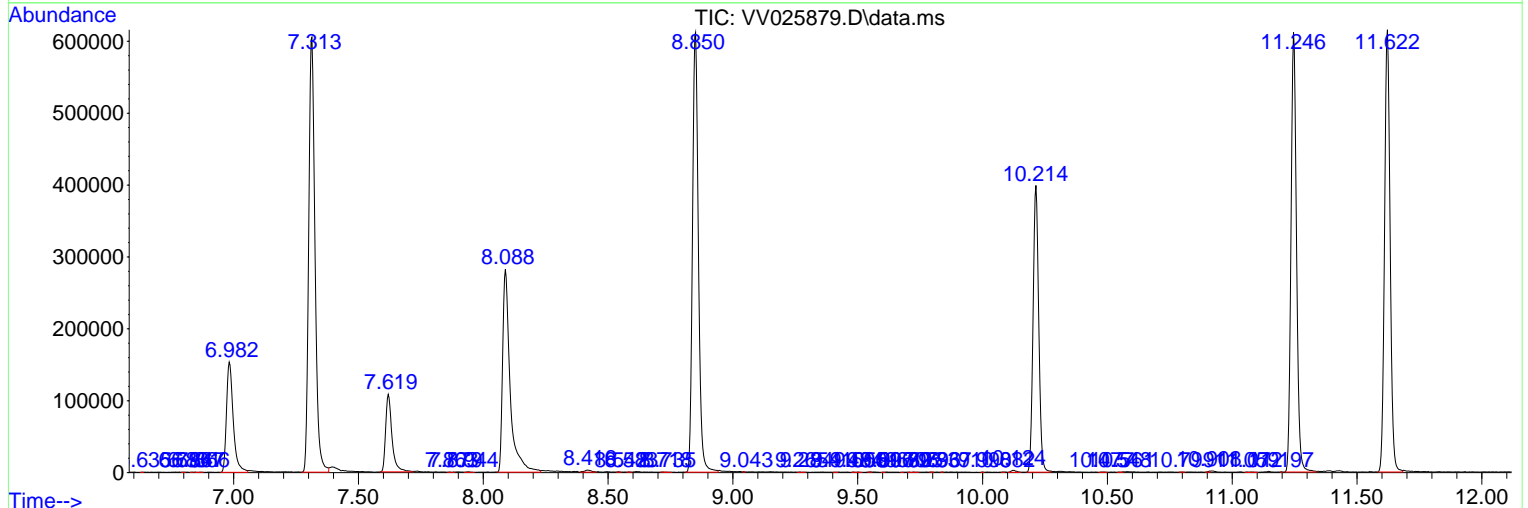
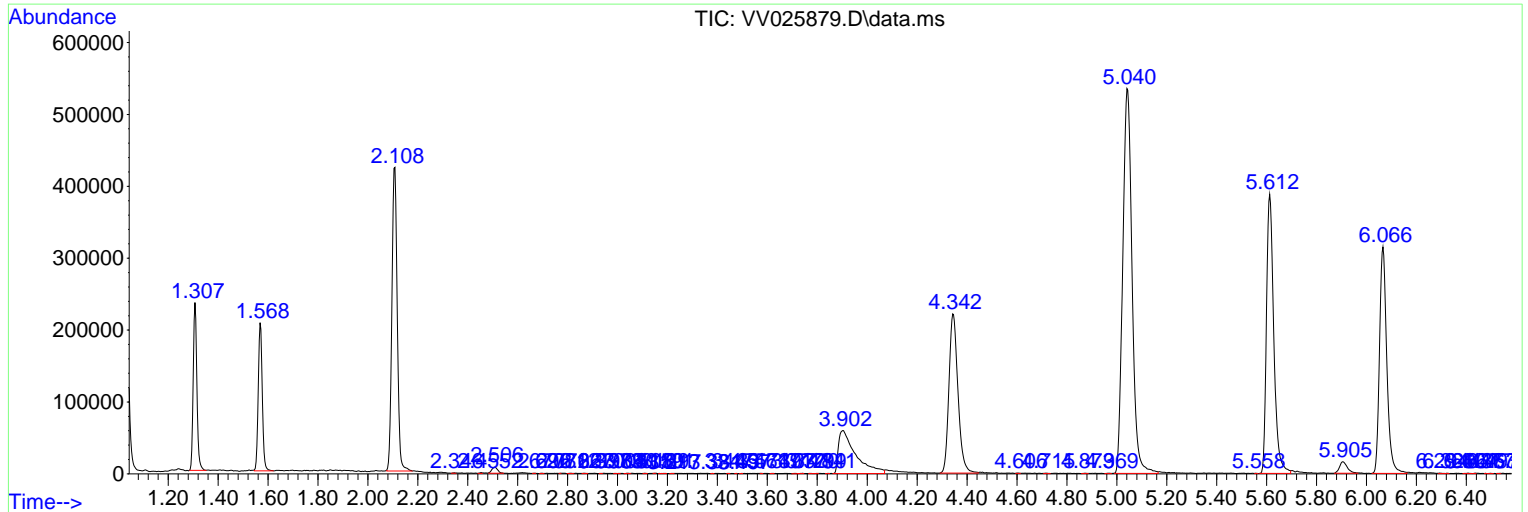
Sum of corrected areas: 10474091

Data Path : Z:\voasrv\HPCHEM1\MSVOA\_V\Data\VV051222\  
 Data File : VV025879.D  
 Acq On : 12 May 2022 13:55  
 Operator : SY/MD  
 Sample : N2746-06ME  
 Misc : 5.56g/5.0mL/100uL/5.00mL/MSVOA\_V/MEOH  
 ALS Vial : 5 Sample Multiplier: 1

**Instrument :**  
 MSVOA\_V  
**ClientSampleId :**  
 DBSL2ME

Quant Method : Z:\voasrv\HPCHEM1\MSVOA\_V\Method\SFAMVLM051022WMA.M  
 Quant Title : VOC Analysis

TIC Library : C:\Database\NIST20.L  
 TIC Integration Parameters: LSCINT.P



Data Path : Z:\voasrv\HPCHEM1\MSVOA\_V\Data\VV051222\  
Data File : VV025879.D  
Acq On : 12 May 2022 13:55  
Operator : SY/MD  
Sample : N2746-06ME  
Misc : 5.56g/5.0mL/100uL/5.00mL/MSVOA\_V/MEOH  
ALS Vial : 5 Sample Multiplier: 1

Instrument :  
MSVOA\_V  
ClientSampleId :  
DBSL2ME

Quant Method : Z:\voasrv\HPCHEM1\MSVOA\_V\Method\SFAMVLM051022WMA.M  
Quant Title : VOC Analysis

TIC Library : C:\Database\NIST20.L  
TIC Integration Parameters: LSCINT.P

No Library Search Compounds Detected

\*\*\*\*\*

Data Path : Z:\voasrv\HPCHEM1\MSVOA\_V\Data\VV051222\  
Data File : VV025879.D  
Acq On : 12 May 2022 13:55  
Operator : SY/MD  
Sample : N2746-06ME  
Misc : 5.56g/5.0mL/100uL/5.00mL/MSVOA\_V/MEOH  
ALS Vial : 5 Sample Multiplier: 1

Instrument :  
MSVOA\_V  
ClientSampleId :  
DBSL2ME

Quant Method : Z:\voasrv\HPCHEM1\MSVOA\_V\Method\SFAMVLM051022WMA.M  
Quant Title : VOC Analysis

TIC Library : C:\Database\NIST0.L  
TIC Integration Parameters: LSCINT.P

TIC Top Hit name	RT	EstConc	Units	Response	--Internal Standard--		
					#	RT	Resp Conc

---