

Data Path : Z:\VOASRV\HPCHEM1\MSVOA V\DATA\VV051320\
 Data File : VV016034.D
 Acq On : 13 May 2020 12:38
 Operator : SY/MD
 Sample : L2542-12
 Misc : 25.0mL/MSVOA V/WATER
 ALS Vial : 6 Sample Multiplier: 1

Instrument :
 MSVOA_V
 ClientSampled :

Quant Time: May 14 02:28:13 2020
 Quant Method : Z:\VOASRV\HPCHEM1\MSVOA_V\METHOD\SOMVTR050720WMA.M
 Quant Title : TRACE VOA SOM01.0
 QLast Update : Thu May 14 02:25:38 2020
 Response via : Initial Calibration

| Internal Standards | R.T. | QIon | Response | Conc | Units | Dev(Min) |
|----------------------------|-------|------|----------|------|-------|----------|
| 1) 1,4-Difluorobenzene | 5.64 | 114 | 144308 | 5.00 | ug/L | 0.00 |
| 28) Chlorobenzene-d5 | 8.87 | 117 | 143446 | 5.00 | ug/L | 0.00 |
| 61) 1,4-Dichlorobenzene-d4 | 11.27 | 152 | 65537 | 5.00 | ug/L | 0.00 |

System Monitoring Compounds

| | | | | | | |
|--------------------------------|--------|-------|----------|----------|------|---------|
| 4) Vinyl Chloride-d3 | 1.32 | 65 | 48750 | 6.23 | ug/L | 0.00 |
| Spiked Amount | 5.000 | Range | 40 - 130 | Recovery | = | 124.60% |
| 7) Chloroethane-d5 | 1.58 | 69 | 44236 | 5.96 | ug/L | 0.00 |
| Spiked Amount | 5.000 | Range | 65 - 130 | Recovery | = | 119.20% |
| 11) 1,1-Dichloroethene-d2 | 2.12 | 63 | 71749 | 4.26 | ug/L | 0.00 |
| Spiked Amount | 5.000 | Range | 60 - 125 | Recovery | = | 85.20% |
| 20) 2-Butanone-d5 | 3.90 | 46 | 116030 | 51.96 | ug/L | -0.03 |
| Spiked Amount | 50.000 | Range | 40 - 130 | Recovery | = | 103.92% |
| 24) Chloroform-d | 4.38 | 84 | 78917 | 4.61 | ug/L | 0.00 |
| Spiked Amount | 5.000 | Range | 70 - 125 | Recovery | = | 92.20% |
| 26) 1,2-Dichloroethane-d4 | 5.06 | 65 | 51759 | 5.28 | ug/L | 0.00 |
| Spiked Amount | 5.000 | Range | 70 - 130 | Recovery | = | 105.60% |
| 32) Benzene-d6 | 5.08 | 84 | 183848 | 5.39 | ug/L | 0.00 |
| Spiked Amount | 5.000 | Range | 70 - 125 | Recovery | = | 107.80% |
| 36) 1,2-Dichloropropane-d6 | 6.10 | 67 | 56456 | 5.42 | ug/L | 0.00 |
| Spiked Amount | 5.000 | Range | 60 - 140 | Recovery | = | 108.40% |
| 41) Toluene-d8 | 7.34 | 98 | 163861 | 5.08 | ug/L | 0.00 |
| Spiked Amount | 5.000 | Range | 70 - 130 | Recovery | = | 101.60% |
| 45) trans-1,3-Dichloropropene- | 7.65 | 79 | 17630 | 4.31 | ug/L | 0.00 |
| Spiked Amount | 5.000 | Range | 55 - 130 | Recovery | = | 86.20% |
| 48) 2-Hexanone-d5 | 8.11 | 63 | 92989 | 51.77 | ug/L | 0.00 |
| Spiked Amount | 50.000 | Range | 45 - 130 | Recovery | = | 103.54% |
| 59) 1,1,2,2-Tetrachloroethane- | 10.24 | 84 | 39616 | 5.41 | ug/L | 0.00 |
| Spiked Amount | 5.000 | Range | 65 - 120 | Recovery | = | 108.20% |
| 65) 1,2-Dichlorobenzene-d4 | 11.65 | 152 | 57801 | 5.43 | ug/L | 0.00 |
| Spiked Amount | 5.000 | Range | 80 - 120 | Recovery | = | 108.60% |

Target Compounds

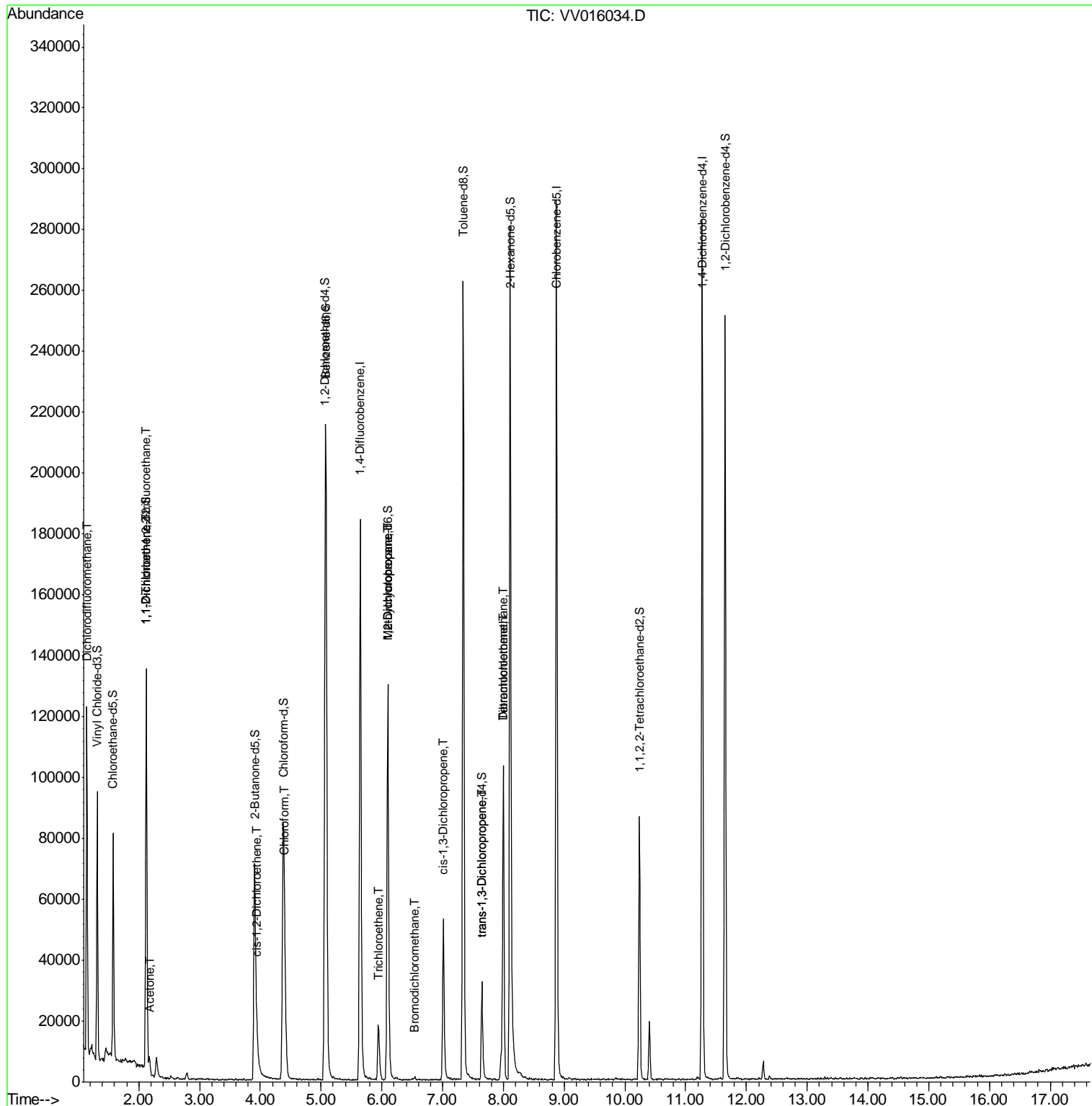
| Target Compounds | R.T. | QIon | Response | Conc | Units | Ovalue |
|--------------------------------|------|------|----------|-------|--------|--------|
| 2) Dichlorodifluoromethane | 1.14 | 85 | 1531 | 0.138 | ug/L # | 83 |
| 10) 1,1,2-Trichloro-1,2,2-trif | 2.13 | 101 | 668 | 0.081 | ug/L # | 20 |
| 12) 1,1-Dichloroethene | 2.12 | 96 | 668 | 0.084 | ug/L # | 1 |
| 13) Acetone | 2.18 | 43 | 4217 | 2.863 | ug/L | 65 |
| 22) cis-1,2-Dichloroethene | 3.95 | 96 | 1656 | 0.180 | ug/L | 93 |
| 25) Chloroform | 4.41 | 83 | 21721 | 1.167 | ug/L | 98 |
| 34) Trichloroethene | 5.95 | 95 | 6497 | 0.631 | ug/L | 90 |
| 35) Methylcyclohexane | 6.10 | 83 | 14643 | 0.940 | ug/L # | 17 |
| 37) 1,2-Dichloropropane | 6.10 | 63 | 7214 | 0.787 | ug/L # | 87 |
| 38) Bromodichloromethane | 6.54 | 83 | 858 | 0.074 | ug/L # | 67 |
| 39) cis-1,3-Dichloropropene | 7.01 | 75 | 1431 | 0.110 | ug/L # | 70 |
| 46) trans-1,3-Dichloropropene | 7.64 | 75 | 944 | 0.086 | ug/L # | 81 |
| 49) Tetrachloroethene | 8.00 | 164 | 21712 | 3.021 | ug/L | 97 |
| 51) Dibromochloromethane | 8.00 | 129 | 20553 | 2.987 | ug/L # | 9 |

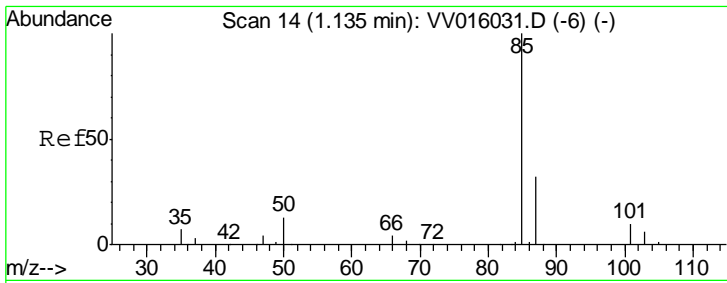
(#) = qualifier out of range (m) = manual integration (+) = signals summed

Data Path : Z:\VOASRV\HPCHEM1\MSVOA V\DATA\VV051320\
 Data File : VV016034.D
 Acq On : 13 May 2020 12:38
 Operator : SY/MD
 Sample : L2542-12
 Misc : 25.0mL/MSVOA V/WATER
 ALS Vial : 6 Sample Multiplier: 1

Instrument :
 MSVOA_V
 ClientSampled :

Quant Time: May 14 02:28:13 2020
 Quant Method : Z:\VOASRV\HPCHEM1\MSVOA_V\METHOD\SOMVTR050720WMA.M
 Quant Title : TRACE VOA SOM01.0
 QLast Update : Thu May 14 02:25:38 2020
 Response via : Initial Calibration

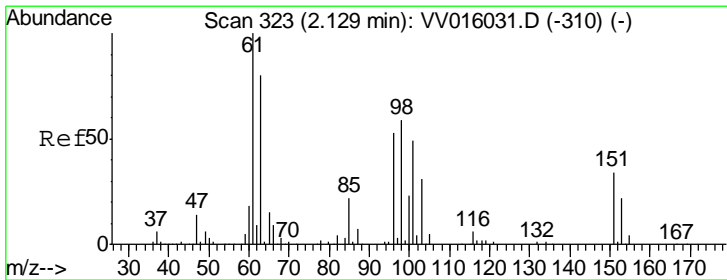
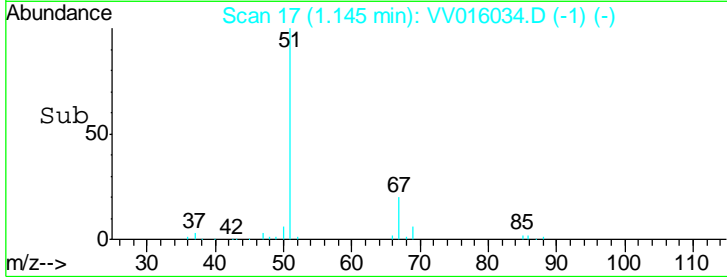
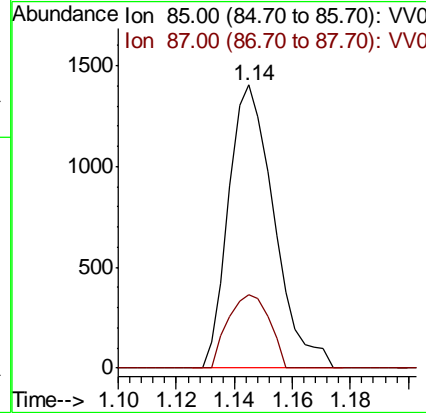
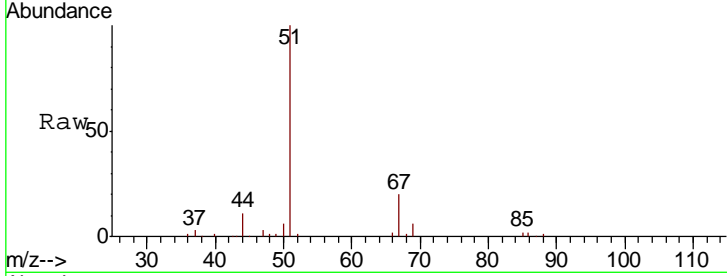




#2
 Dichlorodifluoromethane
 Concen: 0.138 ug/L
 RT: 1.14 min Scan# 17
 Delta R.T. 0.01 min
 Lab File: VV016034.D
 Acq: 13 May 2020 12:38

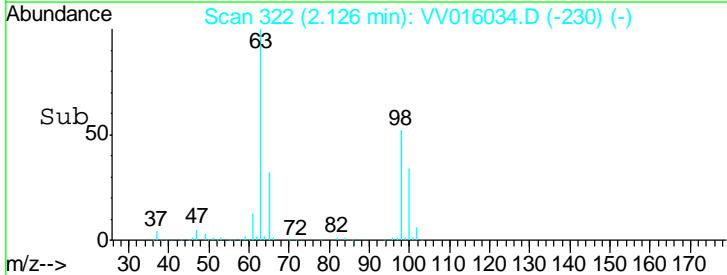
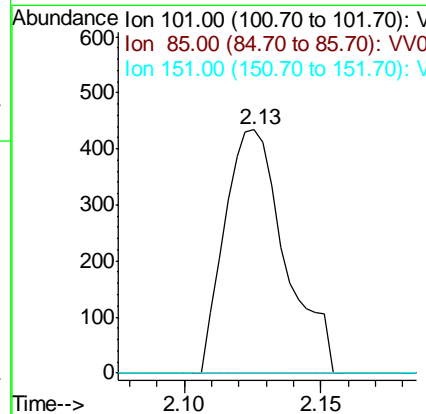
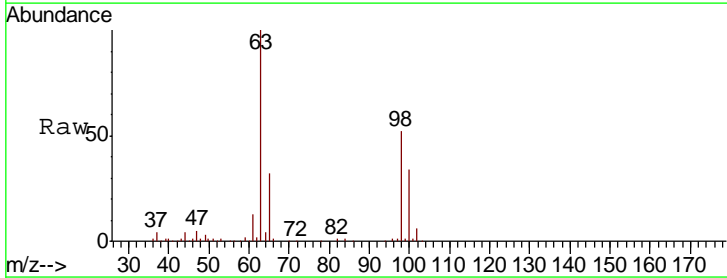
Instrument : MSVOA_V
 ClientSampled :

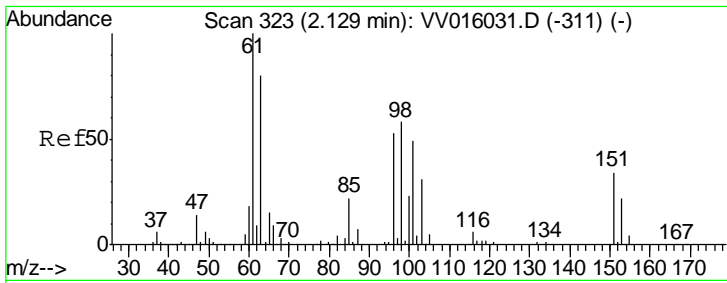
| Tgt Ion | Resp | Lower | Upper |
|---------|------|-------|-------|
| 85 | 1531 | | |
| 85 | 100 | | |
| 87 | 23.6 | 26.4 | 39.6# |



#10
 1,1,2-Trichloro-1,2,2-trifluoroethane
 Concen: 0.081 ug/L
 RT: 2.13 min Scan# 322
 Delta R.T. -0.00 min
 Lab File: VV016034.D
 Acq: 13 May 2020 12:38

| Tgt Ion | Resp | Lower | Upper |
|---------|------|-------|-------|
| 101 | 668 | | |
| 101 | 100 | | |
| 85 | 0.0 | 35.7 | 53.5# |
| 151 | 0.0 | 58.0 | 87.0# |

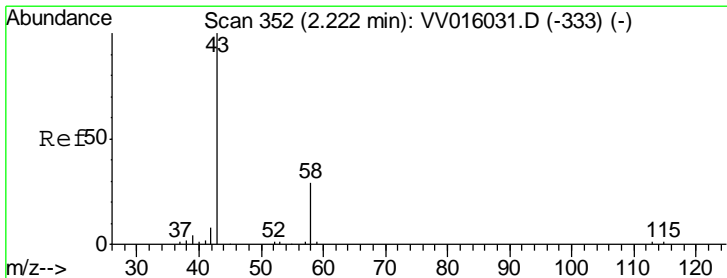
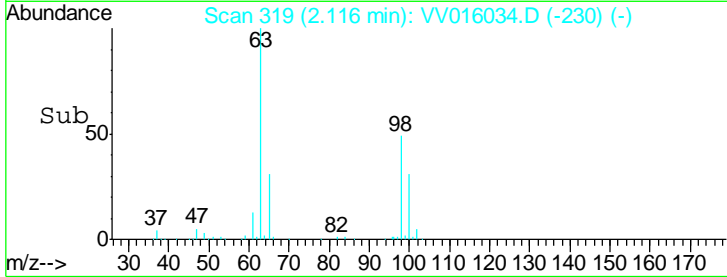
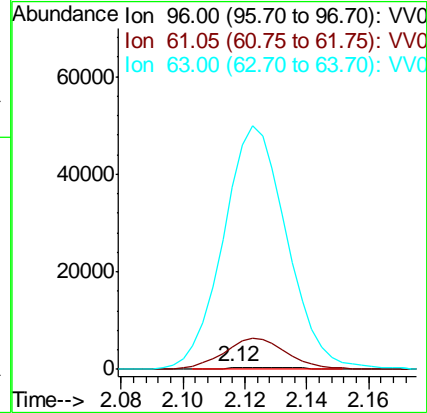
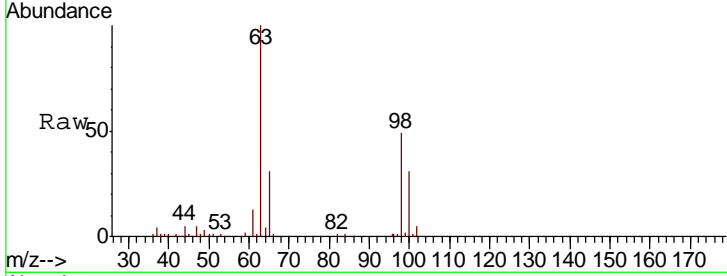




#12
 1,1-Dichloroethene
 Concen: 0.084 ug/L
 RT: 2.12 min Scan# 319
 Delta R.T. -0.01 min
 Lab File: VV016034.D
 Acq: 13 May 2020 12:38

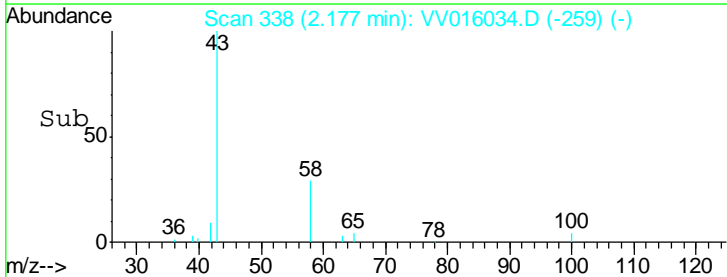
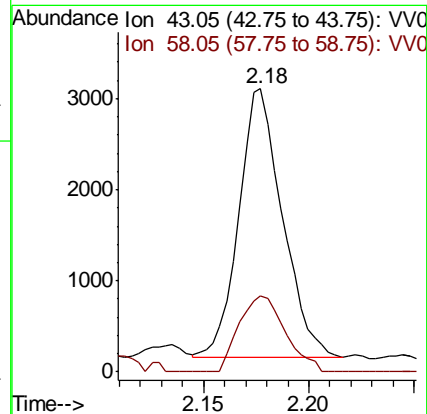
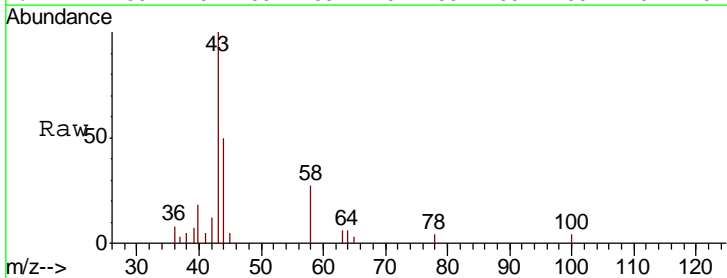
Instrument :
 MSVOA_V
 ClientSampled :

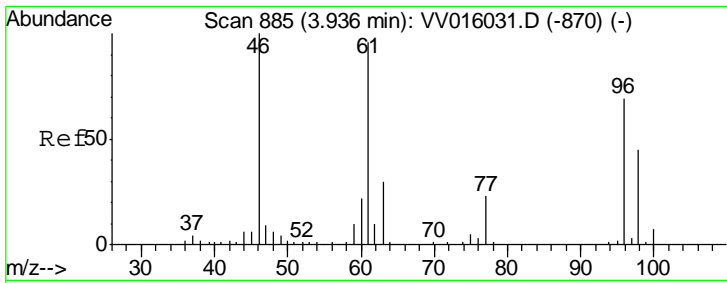
| Tgt Ion | Resp | Lower | Upper |
|---------|--------|-------|--------|
| 96 | 100 | | |
| 61 | 1147.2 | 139.9 | 259.7# |
| 63 | 9171.5 | 106.4 | 197.6# |



#13
 Acetone
 Concen: 2.863 ug/L
 RT: 2.18 min Scan# 338
 Delta R.T. -0.05 min
 Lab File: VV016034.D
 Acq: 13 May 2020 12:38

| Tgt Ion | Resp | Lower | Upper |
|---------|------|-------|-------|
| 43 | 100 | | |
| 58 | 30.1 | 0.0 | 30.8 |

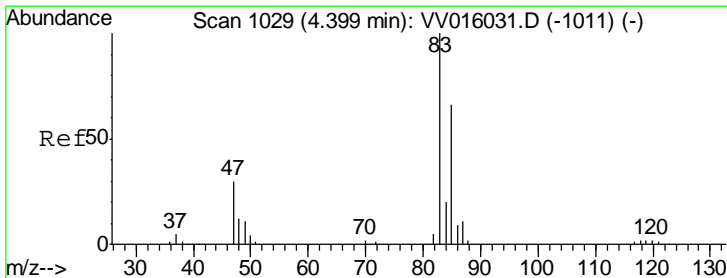
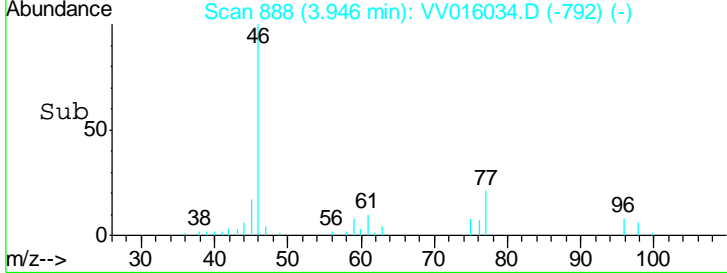
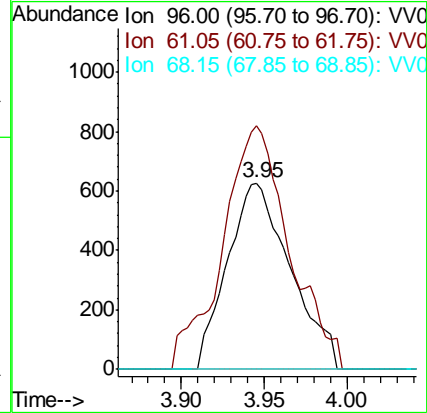
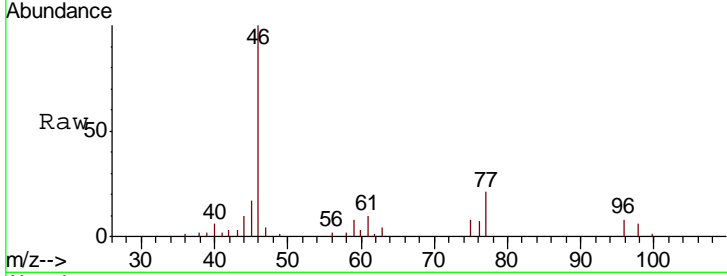




#22
 cis-1,2-Dichloroethene
 Concen: 0.180 ug/L
 RT: 3.95 min Scan# 888
 Delta R.T. 0.01 min
 Lab File: VV016034.D
 Acq: 13 May 2020 12:38

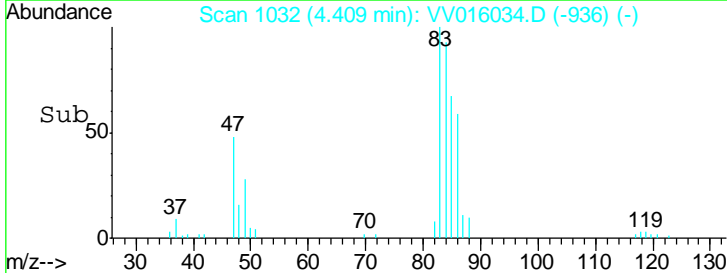
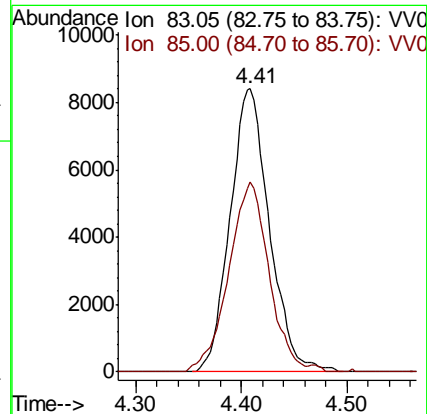
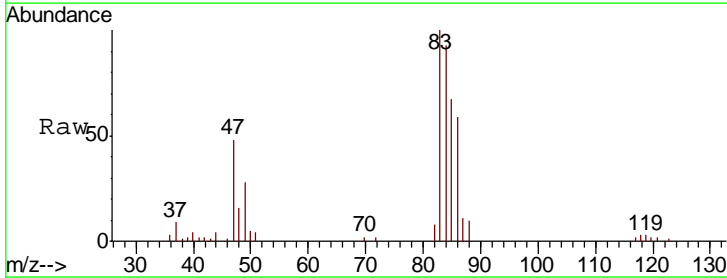
Instrument :
 MSVOA_V
 ClientSampled :

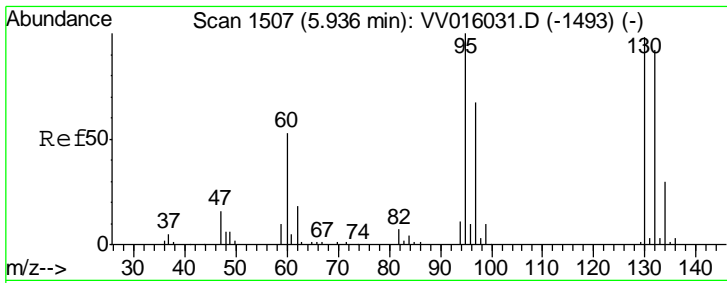
| Tgt Ion | Resp | Lower | Upper |
|---------|-------|-------|-------|
| 96 | 1656 | | |
| 61 | 130.6 | 97.2 | 180.6 |
| 68 | 0.0 | 0.0 | 0.0 |



#25
 Chloroform
 Concen: 1.167 ug/L
 RT: 4.41 min Scan# 1032
 Delta R.T. 0.01 min
 Lab File: VV016034.D
 Acq: 13 May 2020 12:38

| Tgt Ion | Resp | Lower | Upper |
|---------|-------|-------|-------|
| 83 | 21721 | | |
| 85 | 67.3 | 45.7 | 84.9 |

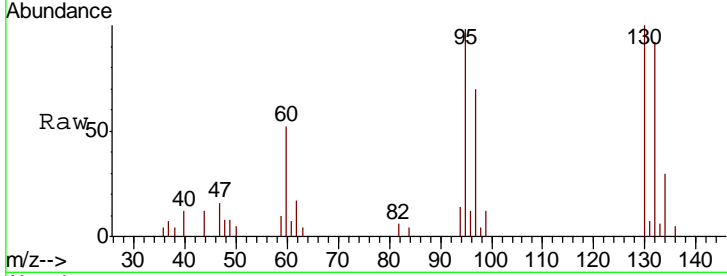




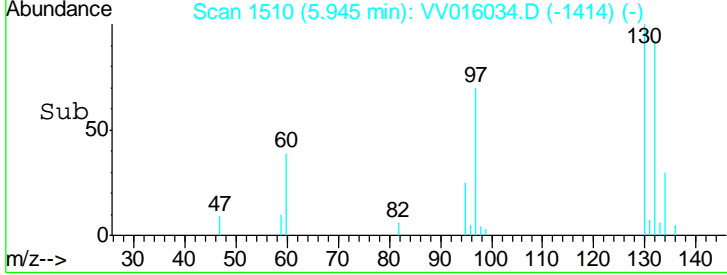
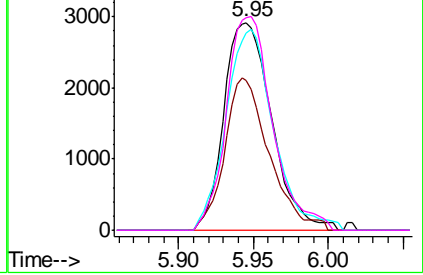
#34
 Trichloroethene
 Concen: 0.631 ug/L
 RT: 5.95 min Scan# 1510
 Delta R.T. 0.01 min
 Lab File: VV016034.D
 Acq: 13 May 2020 12:38

Instrument : MSVOA_V
 ClientSampled :

| Tgt Ion | Resp | Lower | Upper |
|---------|-------|-------|-------|
| 95 | 6497 | | |
| 97 | 72.0 | 43.3 | 80.5 |
| 132 | 94.8 | 60.3 | 112.1 |
| 130 | 102.5 | 66.0 | 122.6 |

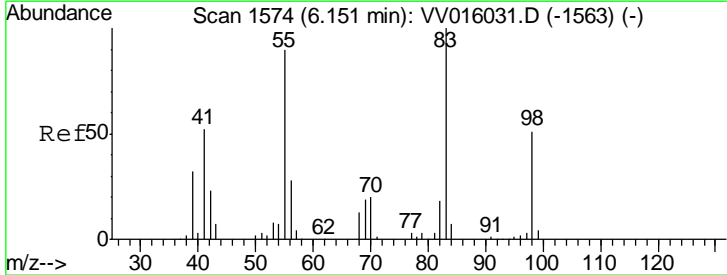


Abundance Ion 95.00 (94.70 to 95.70): VV0
 Ion 96.95 (96.65 to 97.65): VV0
 Ion 131.95 (131.65 to 132.65): VV0
 Ion 129.95 (129.65 to 130.65): VV0

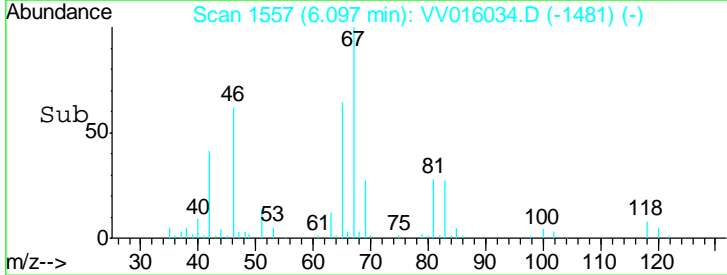
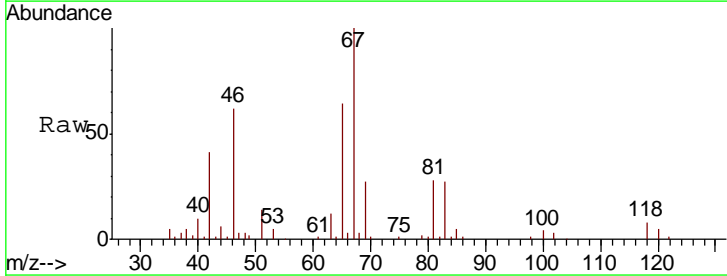
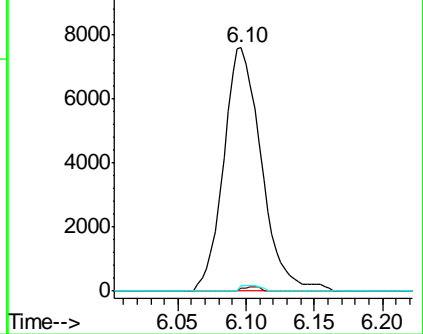


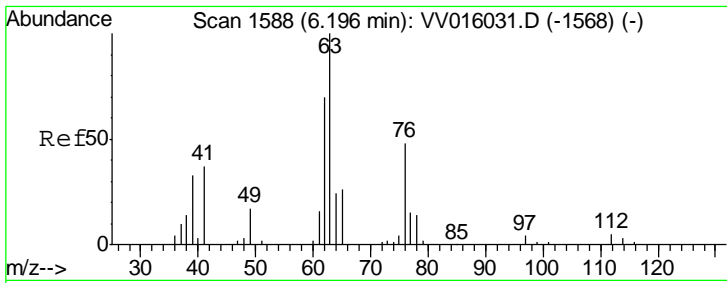
#35
 Methylcyclohexane
 Concen: 0.940 ug/L
 RT: 6.10 min Scan# 1557
 Delta R.T. -0.05 min
 Lab File: VV016034.D
 Acq: 13 May 2020 12:38

| Tgt Ion | Resp | Lower | Upper |
|---------|-------|-------|-------|
| 83 | 14643 | | |
| 55 | 0.8 | 66.2 | 99.2# |
| 98 | 1.2 | 37.9 | 56.9# |



Abundance Ion 83.15 (82.85 to 83.85): VV0
 Ion 55.10 (54.80 to 55.80): VV0
 Ion 98.15 (97.85 to 98.85): VV0

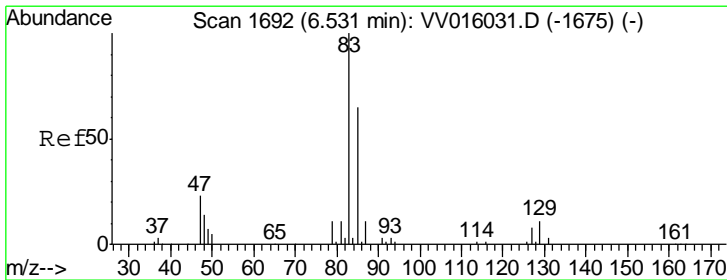
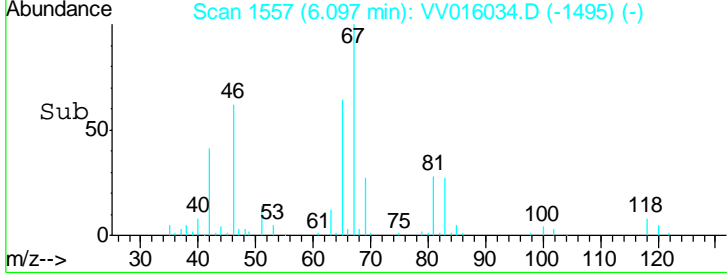
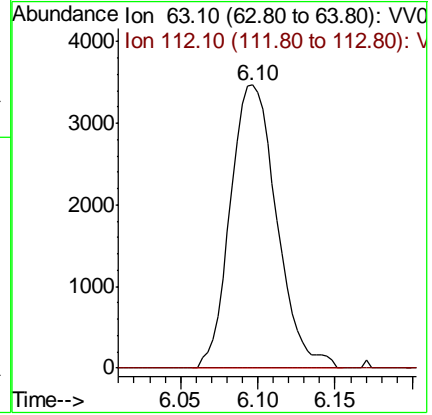
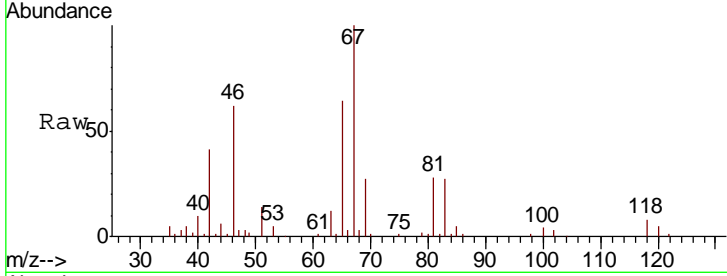




#37
 1,2-Dichloropropane
 Concen: 0.787 ug/L
 RT: 6.10 min Scan# 1557
 Delta R.T. -0.10 min
 Lab File: VV016034.D
 Acq: 13 May 2020 12:38

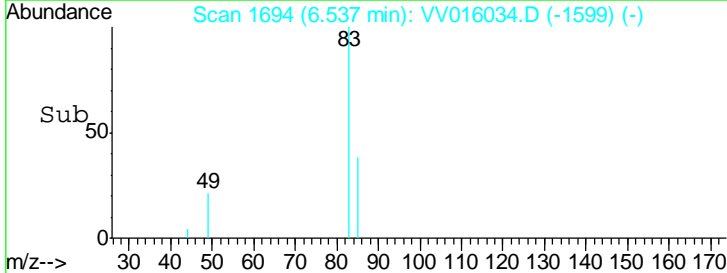
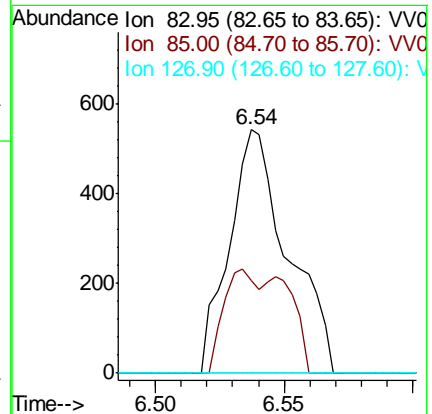
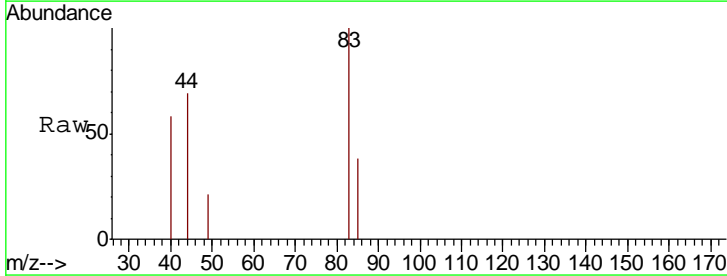
Instrument :
 MSVOA_V
 ClientSampled :

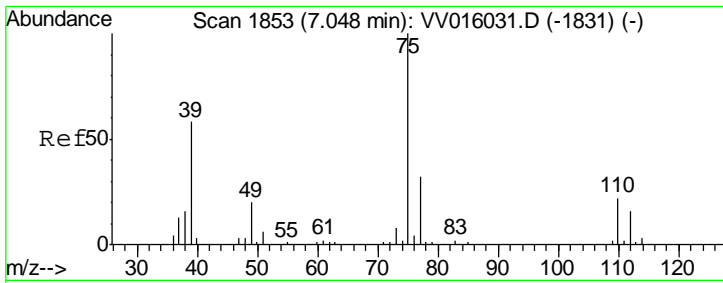
| Tgt Ion | Resp | Lower | Upper |
|---------|------|-------|-------|
| 63 | 100 | | |
| 112 | 0.0 | 3.4 | 5.0# |



#38
 Bromodichloromethane
 Concen: 0.074 ug/L
 RT: 6.54 min Scan# 1694
 Delta R.T. 0.01 min
 Lab File: VV016034.D
 Acq: 13 May 2020 12:38

| Tgt Ion | Resp | Lower | Upper |
|---------|------|-------|-------|
| 83 | 100 | | |
| 85 | 38.3 | 45.5 | 84.5# |
| 127 | 0.0 | 6.2 | 9.4# |

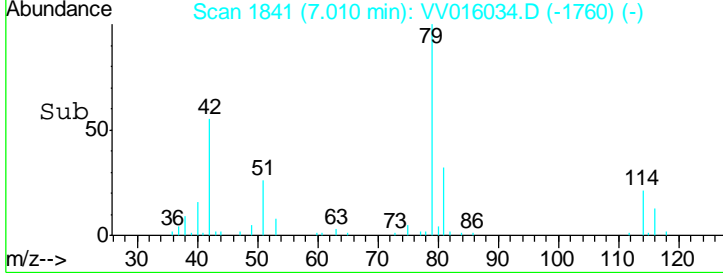
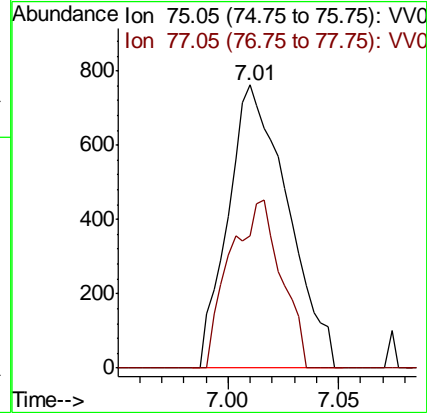
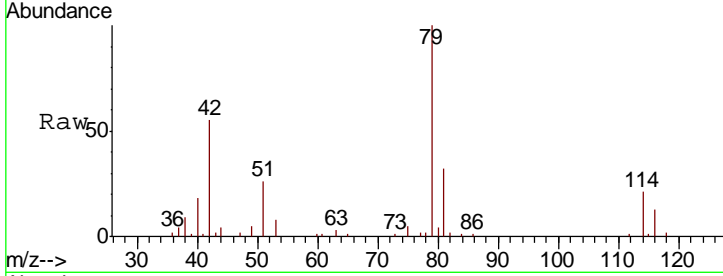




#39
 cis-1,3-Dichloropropene
 Concen: 0.110 ug/L
 RT: 7.01 min Scan# 1841
 Delta R.T. -0.04 min
 Lab File: VV016034.D
 Acq: 13 May 2020 12:38

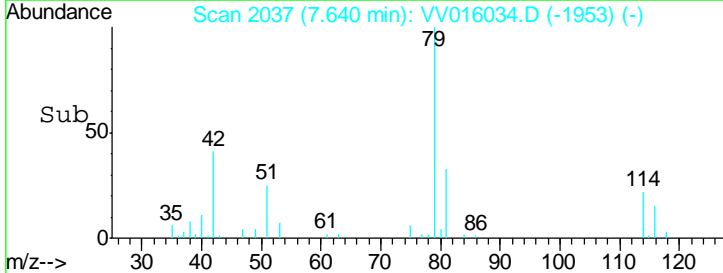
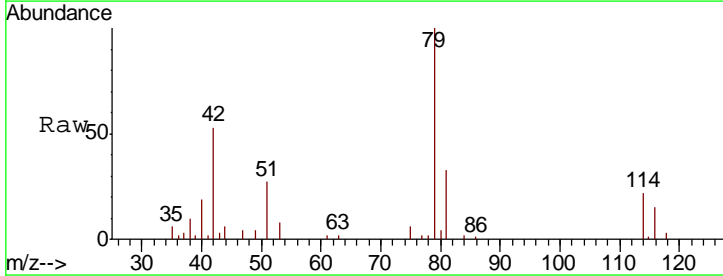
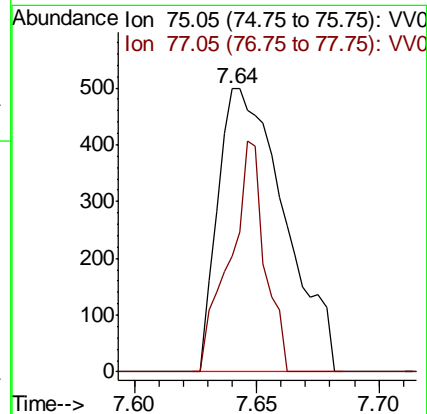
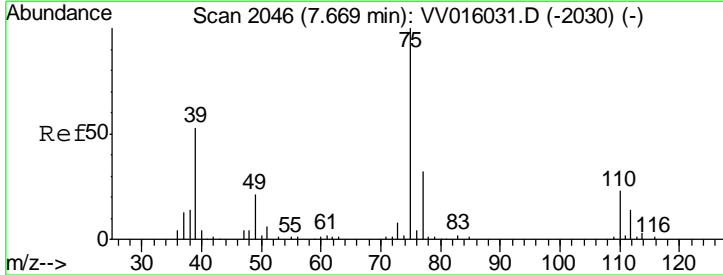
Instrument : MSVOA_V
 ClientSampled :

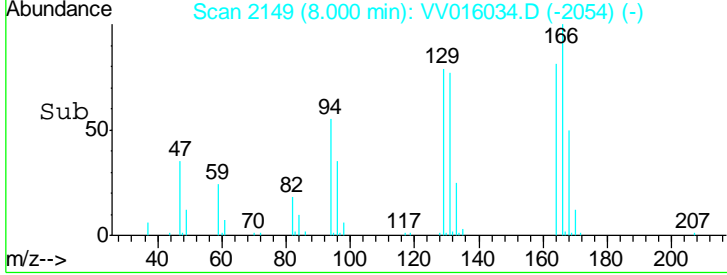
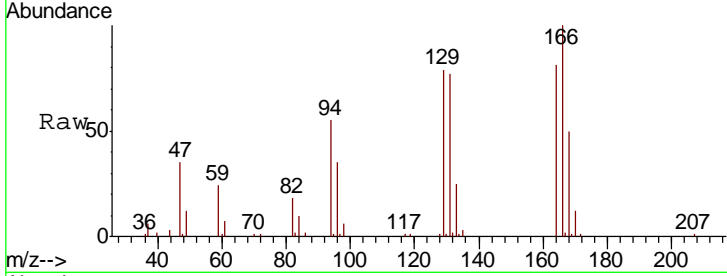
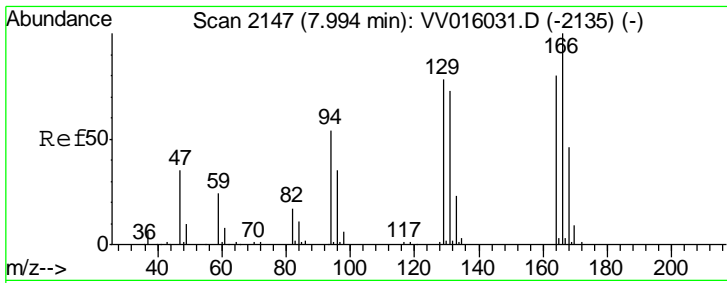
Tgt Ion: 75 Resp: 1431
 Ion Ratio Lower Upper
 75 100
 77 46.6 21.3 39.5#



#46
 trans-1,3-Dichloropropene
 Concen: 0.086 ug/L
 RT: 7.64 min Scan# 2037
 Delta R.T. -0.03 min
 Lab File: VV016034.D
 Acq: 13 May 2020 12:38

Tgt Ion: 75 Resp: 944
 Ion Ratio Lower Upper
 75 100
 77 41.0 21.3 39.6#



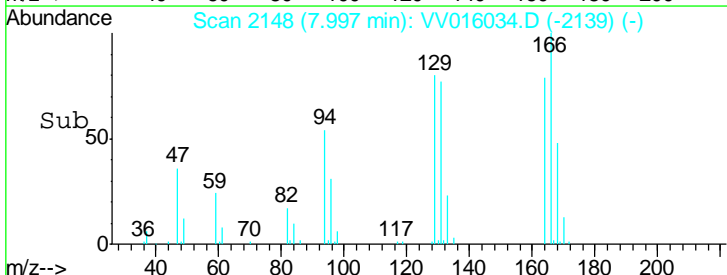
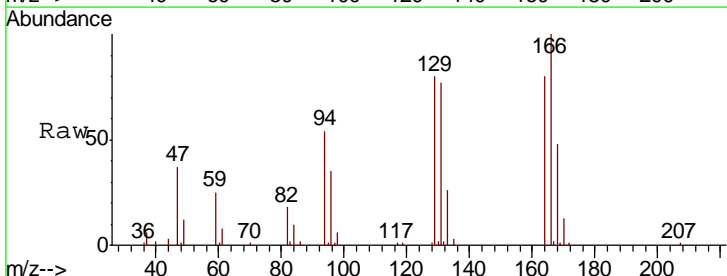
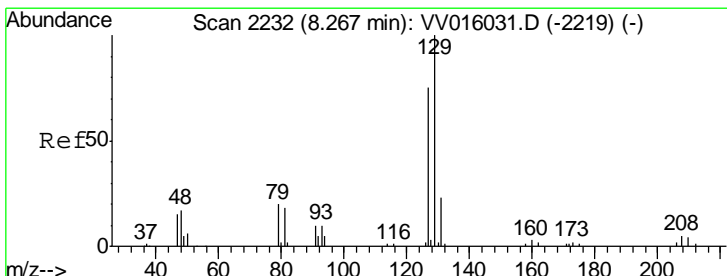
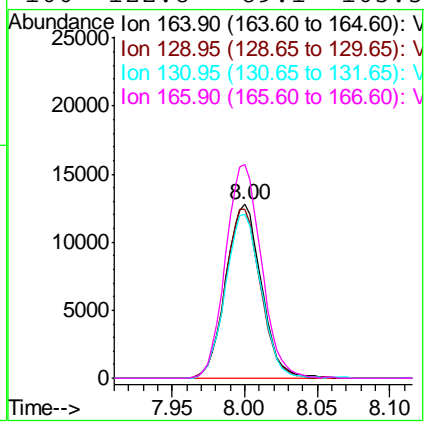


#49
 Tetrachloroethene
 Concen: 3.021 ug/L
 RT: 8.00 min Scan# 2149
 Delta R.T. 0.01 min
 Lab File: VV016034.D
 Acq: 13 May 2020 12:38

Instrument :
 MSVOA_V
 ClientSampled :

Tgt Ion:164 Resp: 21712

| Ion | Ratio | Lower | Upper |
|-----|-------|-------|-------|
| 164 | 100 | | |
| 129 | 97.0 | 69.7 | 129.4 |
| 131 | 94.4 | 66.8 | 124.2 |
| 166 | 122.8 | 89.1 | 165.5 |



#51
 Dibromochloromethane
 Concen: 2.987 ug/L
 RT: 8.00 min Scan# 2148
 Delta R.T. -0.27 min
 Lab File: VV016034.D
 Acq: 13 May 2020 12:38

Tgt Ion:129 Resp: 20553

| Ion | Ratio | Lower | Upper |
|-----|-------|-------|--------|
| 129 | 100 | | |
| 127 | 0.0 | 56.0 | 104.0# |

