

Data Path : Z:\VOASRV\HPCHEM1\MSVOA V\DATA\VV051320\  
 Data File : VV016054.D  
 Acq On : 13 May 2020 20:45  
 Operator : SY/MD  
 Sample : L2598-08  
 Misc : 25.0mL/MSVOA V/WATER  
 ALS Vial : 27 Sample Multiplier: 1

Instrument :  
 MSVOA\_V  
 ClientSampled :  
 H4232

Integration Parameters: rteint.p  
 Integrator: RTE  
 Smoothing : ON Filtering: 5  
 Sampling : 1 Min Area: 3 % of largest Peak  
 Start Thrs: 0.1 Max Peaks: 100  
 Stop Thrs : 0 Peak Location: TOP

If leading or trailing edge < 100 prefer < Baseline drop else tangent >  
 Peak separation: 5

Method : Z:\VOASRV\HPCHEM1\MSVOA\_V\METHOD\SOMVTR050720WMA.M  
 Title : TRACE VOA SOM01.0

Signal : TIC

peak #	R.T. min	first scan	max scan	last scan	PK TY	peak height	corr. area	corr. % max.	% of total
1	1.142	12	16	24	rVB	8412	8212	1.45%	0.153%
2	1.319	63	71	82	rVB	84125	88174	15.56%	1.638%
3	1.582	145	153	165	rBV	72827	90769	16.02%	1.686%
4	2.129	312	323	342	rVB3	193554	335201	59.15%	6.226%
5	3.936	874	885	920	rBV	58671	213504	37.68%	3.965%
6	4.380	1007	1023	1052	rBV2	97689	253031	44.65%	4.699%
7	4.640	1089	1104	1119	rBV3	10283	24952	4.40%	0.463%
8	5.077	1223	1240	1274	rBV2	228738	565848	99.86%	10.509%
9	5.643	1404	1416	1436	rBV	189248	380799	67.20%	7.072%
10	5.942	1494	1509	1526	rBV4	17022	36419	6.43%	0.676%
11	6.097	1542	1557	1583	rBV	131572	270353	47.71%	5.021%
12	7.010	1830	1841	1857	rBV	55065	101383	17.89%	1.883%
13	7.338	1931	1943	1964	rBV	273636	472224	83.33%	8.770%
14	7.643	2028	2038	2059	rBV	33974	60551	10.69%	1.125%
15	7.997	2128	2148	2171	rBV	245751	418770	73.90%	7.778%
16	8.116	2174	2185	2216	rBV2	275194	566662	100.00%	10.524%
17	8.875	2407	2421	2441	rBV	302429	489546	86.39%	9.092%
18	10.238	2834	2845	2860	rBV	92330	143798	25.38%	2.671%
19	10.405	2886	2897	2907	rVB3	4436	6654	1.17%	0.124%
20	11.270	3155	3166	3182	rBV	290916	448253	79.10%	8.325%
21	11.646	3272	3283	3298	rBV	265027	409201	72.21%	7.600%

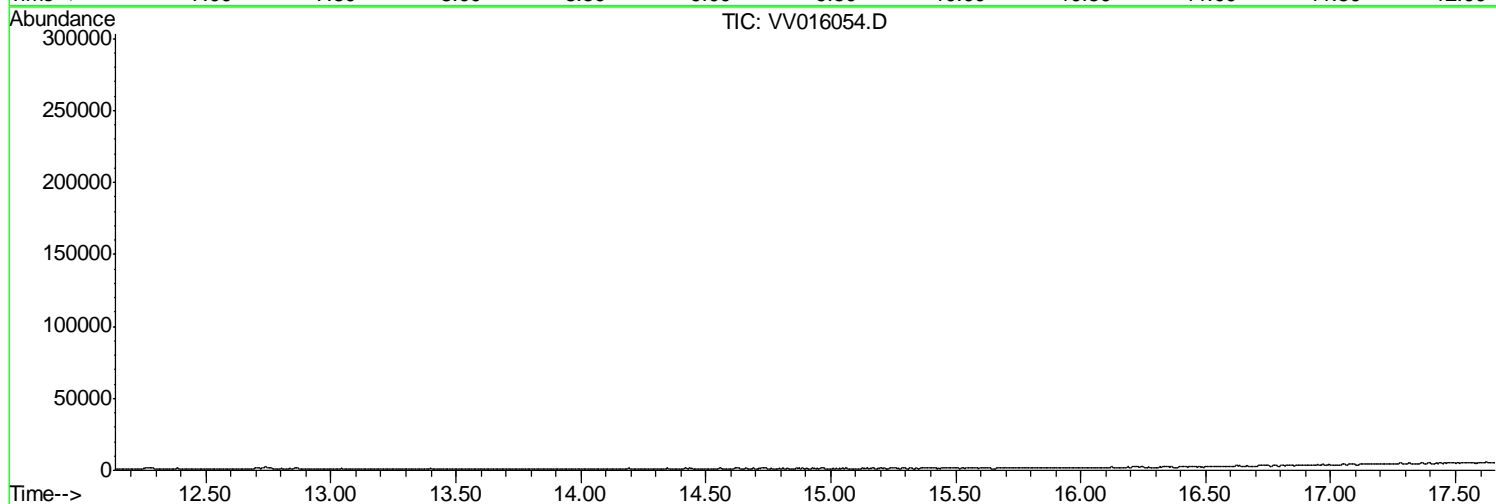
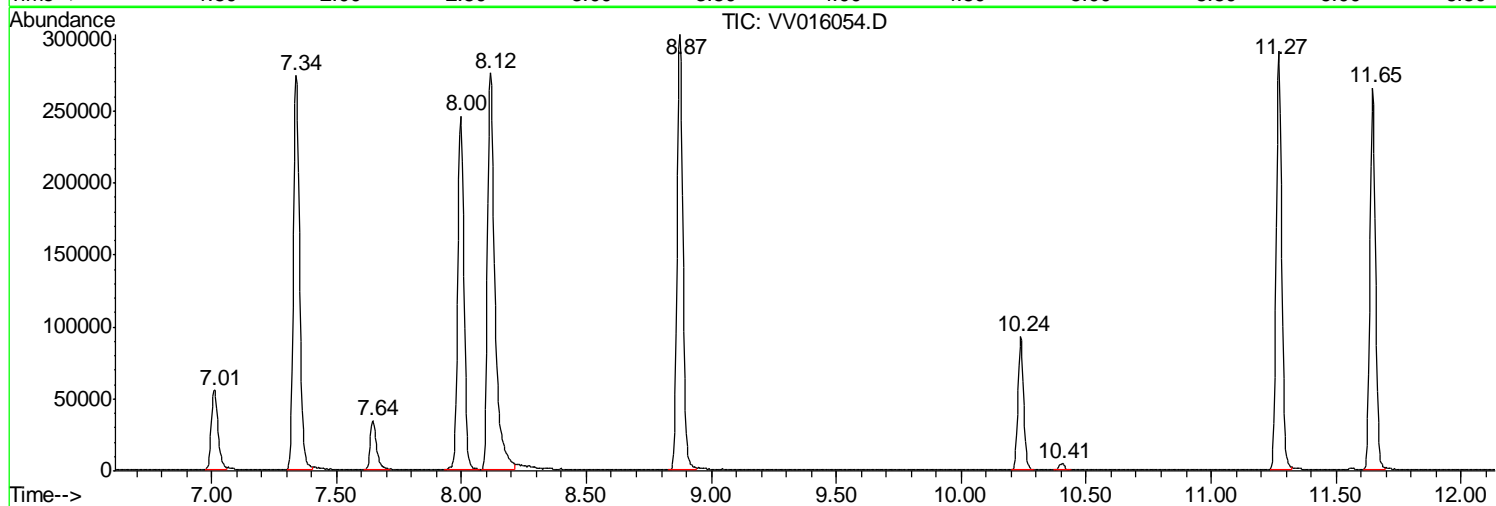
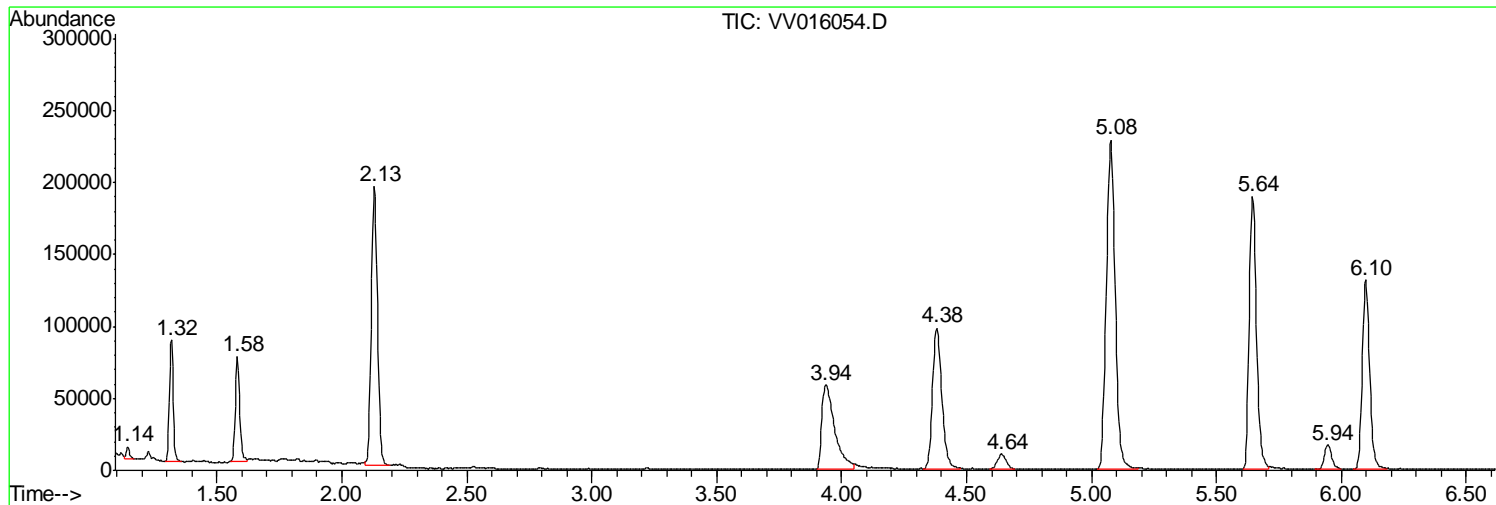
Sum of corrected areas: 5384304

Data Path : Z:\VOASRV\HPCHEM1\MSVOA V\DATA\VV051320\  
Data File : VV016054.D  
Acq On : 13 May 2020 20:45  
Operator : SY/MD  
Sample : L2598-08  
Misc : 25.0mL/MSVOA V/WATER  
ALS Vial : 27 Sample Multiplier: 1

Instrument :  
MSVOA\_V  
ClientSampled :  
H4232

Quant Method : Z:\VOASRV\HPCHEM1\MSVOA\_V\METHOD\SOMVTR050720WMA.M  
Quant Title : TRACE VOA SOM01.0

TIC Library : C:\DATABASE\NIST11.L  
TIC Integration Parameters: LSCINT.P



Data Path : Z:\VOASRV\HPCHEM1\MSVOA\_V\DATA\VV051320\  
Data File : VV016054.D  
Acq On : 13 May 2020 20:45  
Operator : SY/MD  
Sample : L2598-08  
Misc : 25.0mL/MSVOA\_V/WATER  
ALS Vial : 27 Sample Multiplier: 1

Instrument :  
MSVOA\_V  
ClientSampleId :  
H4232

Quant Method : Z:\VOASRV\HPCHEM1\MSVOA\_V\METHOD\SOMVTR050720WMA.M  
Quant Title : TRACE VOA SOM01.0

TIC Library : C:\DATABASE\NIST11.L  
TIC Integration Parameters: LSCINT.P

No Library Search Compounds Detected

\*\*\*\*\*

Data Path : Z:\VOASRV\HPCHEM1\MSVOA\_V\DATA\VV051320\  
Data File : VV016054.D  
Acq On : 13 May 2020 20:45  
Operator : SY/MD  
Sample : L2598-08  
Misc : 25.0mL/MSVOA\_V/WATER  
ALS Vial : 27 Sample Multiplier: 1

Instrument :  
MSVOA\_V  
ClientSampleId :  
H4232

Quant Method : Z:\VOASRV\HPCHEM1\MSVOA\_V\METHOD\SOMVTR050720WMA.M  
Quant Title : TRACE VOA SOM01.0

TIC Library : C:\DATABASE\NIST11.L  
TIC Integration Parameters: LSCINT.P

TIC Top Hit name	RT	EstConc	Units	Response	--Internal Standard--			
					#	RT	Resp	Conc

---