

Data Path : Z:\voasrv\HPCHEM1\MSVOA_V\Data\VW051523\
 Data File : VW031026.D
 Acq On : 15 May 2023 13:00
 Operator : SY/MD
 Sample : 02790-08
 Misc : 25.0mL/MSVOA_V/WATER
 ALS Vial : 11 Sample Multiplier: 1

Instrument :
 MSVOA_V
 ClientSampleId :

Quant Time: May 15 13:33:23 2023
 Quant Method : Z:\voasrv\HPCHEM1\MSVOA_V\Method\SFAMVTR042823WMA.M
 Quant Title : TRACE VOA SFAM1.0
 QLast Update : Sat May 06 01:44:36 2023
 Response via : Initial Calibration

Compound	R.T.	QIon	Response	Conc	Units	Dev(Min)
Internal Standards						
1) 1,4-Difluorobenzene	5.545	114	133865	5.000	ug/L	0.00
28) Chlorobenzene-d5	8.792	117	131803	5.000	ug/L	0.00
58) 1,4-Dichlorobenzene-d4	11.194	152	67680	5.000	ug/L	0.00
System Monitoring Compounds						
4) Vinyl Chloride-d3	1.285	65	55572	5.039	ug/L	0.00
Spiked Amount	5.000	Range 40 - 130	Recovery	=	100.800%	
7) Chloroethane-d5	1.539	69	46145	5.129	ug/L	0.00
Spiked Amount	5.000	Range 65 - 130	Recovery	=	102.600%	
11) 1,1-Dichloroethene-d2	2.066	65	26349	4.514	ug/L	0.00
Spiked Amount	5.000	Range 60 - 125	Recovery	=	90.200%	
20) 2-Butanone-d5	3.815	46	136821	69.957	ug/L	-0.02
Spiked Amount	50.000	Range 40 - 130	Recovery	=	139.920%#	
24) Chloroform-d	4.259	84	115864	5.286	ug/L	0.00
Spiked Amount	5.000	Range 70 - 125	Recovery	=	105.800%	
26) 1,2-Dichloroethane-d4	4.953	65	59476	5.337	ug/L	0.00
Spiked Amount	5.000	Range 70 - 130	Recovery	=	106.800%	
32) Benzene-d6	4.969	84	201368	5.212	ug/L	0.00
Spiked Amount	5.000	Range 70 - 125	Recovery	=	104.200%	
36) 1,2-Dichloropropane-d6	5.998	67	62432	5.557	ug/L	0.00
Spiked Amount	5.000	Range 60 - 140	Recovery	=	111.200%	
41) Toluene-d8	7.252	98	172581	4.691	ug/L	0.00
Spiked Amount	5.000	Range 70 - 130	Recovery	=	93.800%	
43) trans-1,3-Dichloroprop...	7.561	79	20930	4.970	ug/L	0.00
Spiked Amount	5.000	Range 55 - 130	Recovery	=	99.400%	
46) 2-Hexanone-d5	8.034	63	74265	50.335	ug/L	0.00
Spiked Amount	50.000	Range 45 - 130	Recovery	=	100.680%	
56) 1,1,2,2-Tetrachloroeth...	10.159	84	40735	5.003	ug/L	0.00
Spiked Amount	5.000	Range 65 - 120	Recovery	=	100.000%	
66) 1,2-Dichlorobenzene-d4	11.567	152	65125	5.162	ug/L	0.00
Spiked Amount	5.000	Range 80 - 120	Recovery	=	103.200%	
Target Compounds						
3) Chloromethane	1.217	50	3090	0.249	ug/L	98
5) Vinyl chloride	1.288	62	747327	71.948	ug/L	99
6) Bromomethane	1.497	94	476	0.096	ug/L	92
8) Chloroethane	1.555	64	13543	2.142	ug/L	99
10) 1,1,2-Trichloro-1,2,2-...	2.076	101	1513	0.155	ug/L #	39
12) 1,1-Dichloroethene	2.076	96	106332	11.803	ug/L #	73
13) Acetone	2.150	43	4704	2.816	ug/L	91
18) trans-1,2-Dichloroethene	2.703	96	127847	15.536	ug/L	97
19) 1,1-Dichloroethane	3.127	63	4881	0.307	ug/L	95
22) cis-1,2-Dichloroethene	3.821	96	6020314	693.404	ug/L	93
29) 1,1,1-Trichloroethane	4.522	97	16095	0.972	ug/L	97
35) Methylcyclohexane	6.001	83	15865	1.158	ug/L #	17
37) 1,2-Dichloropropane	5.998	63	7688	0.978	ug/L #	88
39) cis-1,3-Dichloropropene	6.921	75	2046	0.174	ug/L	84
40) 4-Methyl-2-pentanone	7.178	43	4009	0.984	ug/L #	71
42) Toluene	7.323	91	111636	3.128	ug/L	98
44) trans-1,3-Dichloropropene	7.567	75	1406	0.140	ug/L	85
47) Tetrachloroethene	7.918	164	1394	0.165	ug/L	85
48) 2-Hexanone	8.095	43	9522	3.047	ug/L #	87

Data Path : Z:\voasrv\HPCHEM1\MSVOA_V\Data\VV051523\
 Data File : VV031026.D
 Acq On : 15 May 2023 13:00
 Operator : SY/MD
 Sample : 02790-08
 Misc : 25.0mL/MSVOA_V/WATER
 ALS Vial : 11 Sample Multiplier: 1

Instrument :
 MSVOA_V
 ClientSampleId :

Quant Time: May 15 13:33:23 2023
 Quant Method : Z:\voasrv\HPCHEM1\MSVOA_V\Method\SFAMVTR042823WMA.M
 Quant Title : TRACE VOA SFAM1.0
 QLast Update : Sat May 06 01:44:36 2023
 Response via : Initial Calibration

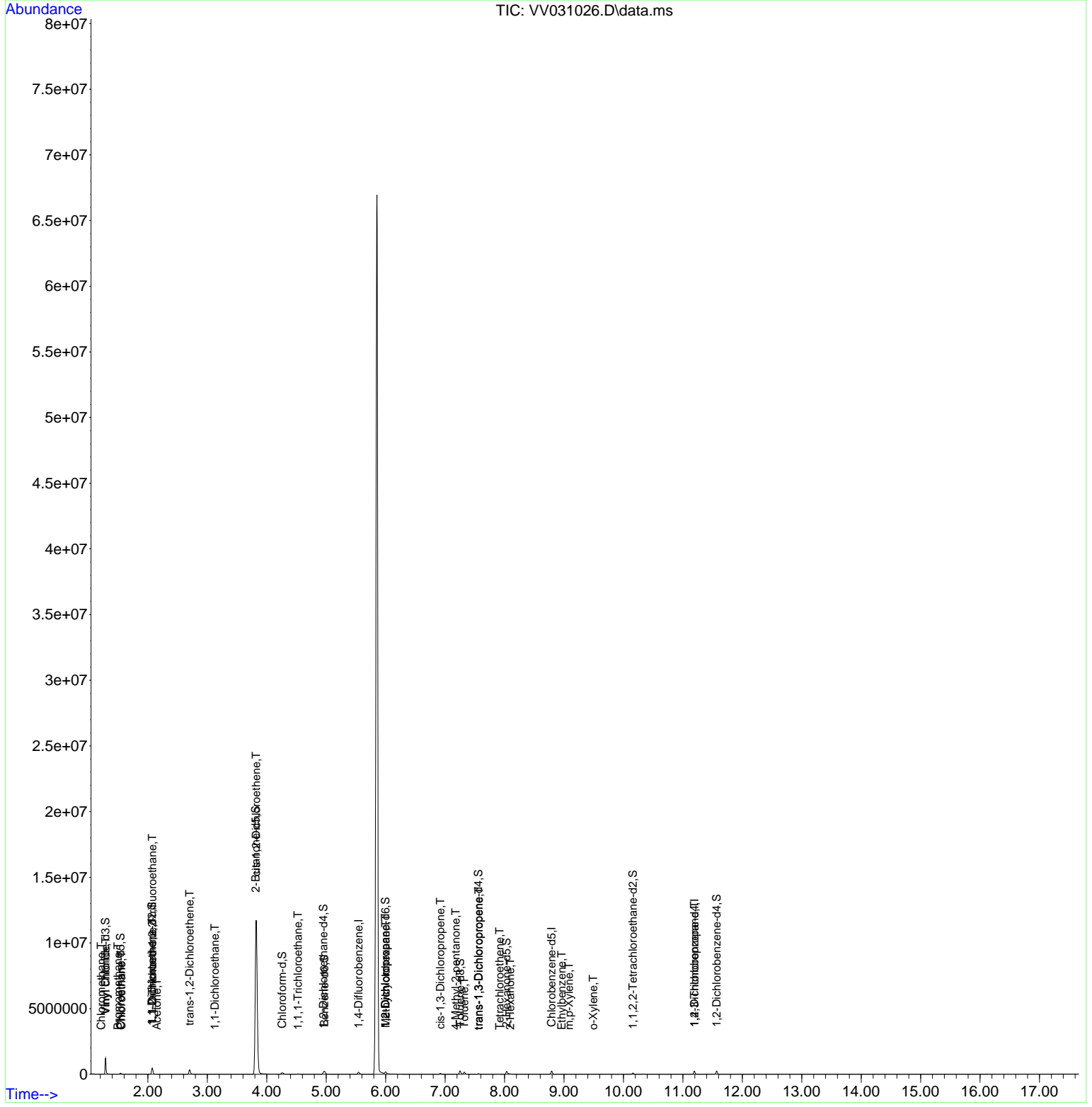
Compound	R.T.	QIon	Response	Conc	Units	Dev(Min)
52) Ethylbenzene	8.960	91	1699	0.044	ug/L	89
53) m,p-Xylene	9.085	106	2550	0.164	ug/L	98
54) o-Xylene	9.490	106	1454	0.098	ug/L	70
61) 1,2,3-Trichloropropane	11.194	75	7238	1.702	ug/L #	59

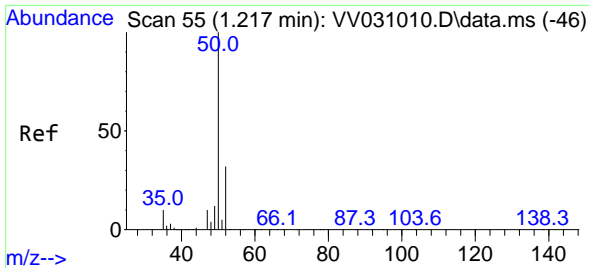
(#) = qualifier out of range (m) = manual integration (+) = signals summed

Data Path : Z:\voasrv\HPCHEM1\MSVOA_V\Data\VV051523\
 Data File : VV031026.D
 Acq On : 15 May 2023 13:00
 Operator : SY/MD
 Sample : 02790-08
 Misc : 25.0mL/MSVOA_V/WATER
 ALS Vial : 11 Sample Multiplier: 1

Instrument :
 MSVOA_V
 ClientSampleId :

Quant Time: May 15 13:33:23 2023
 Quant Method : Z:\voasrv\HPCHEM1\MSVOA_V\Method\SFAMVTR042823WMA.M
 Quant Title : TRACE VOA SFAM1.0
 QLast Update : Sat May 06 01:44:36 2023
 Response via : Initial Calibration

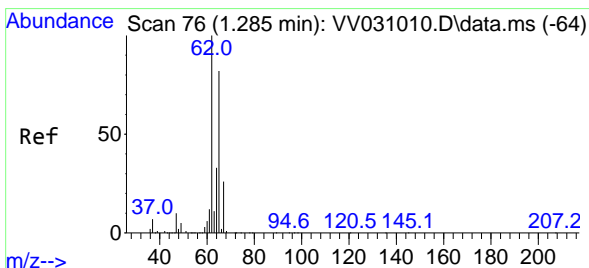
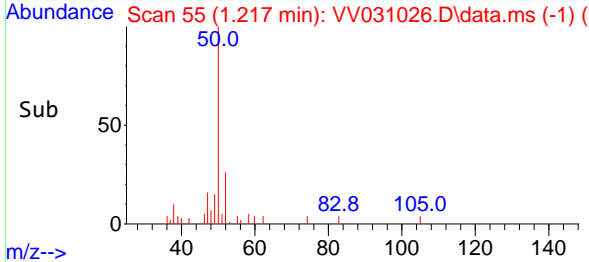
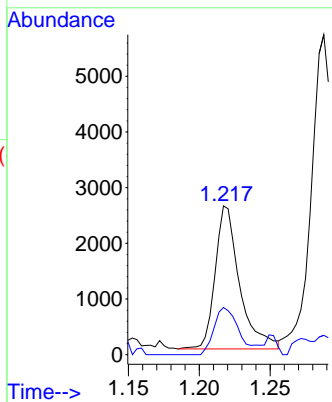
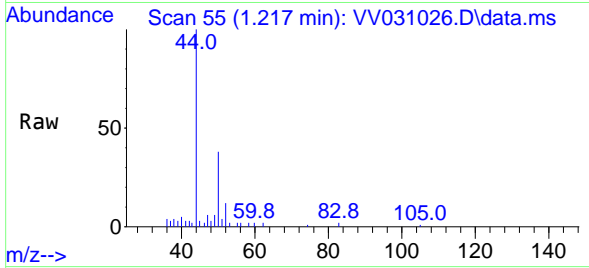




#3
 Chloromethane
 Concen: 0.249 ug/L
 RT: 1.217 min Scan# 51
 Delta R.T. -0.000 min
 Lab File: VV031026.D
 Acq: 15 May 2023 13:00

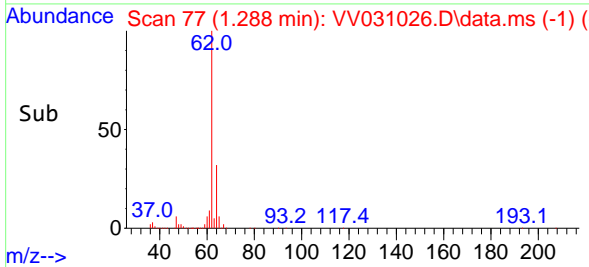
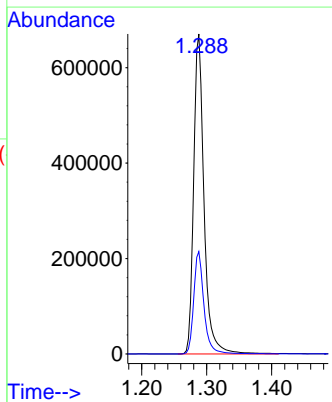
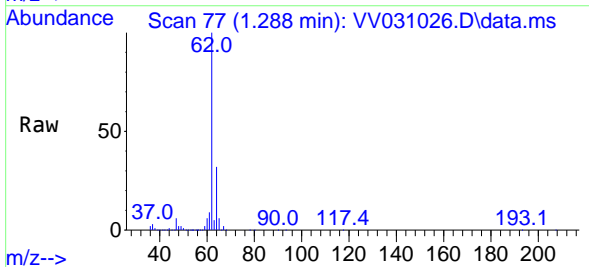
Instrument : MSVOA_V
 ClientSampleId :

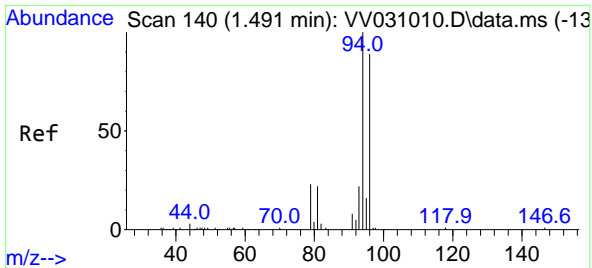
Tgt Ion: 50 Resp: 3090
 Ion Ratio Lower Upper
 50 100
 52 31.7 22.8 42.4



#5
 Vinyl chloride
 Concen: 71.948 ug/L
 RT: 1.288 min Scan# 77
 Delta R.T. 0.003 min
 Lab File: VV031026.D
 Acq: 15 May 2023 13:00

Tgt Ion: 62 Resp: 747327
 Ion Ratio Lower Upper
 62 100
 64 32.0 22.8 42.4

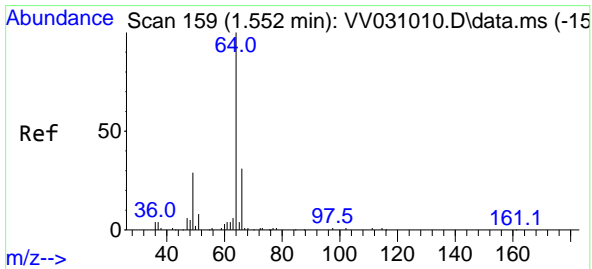
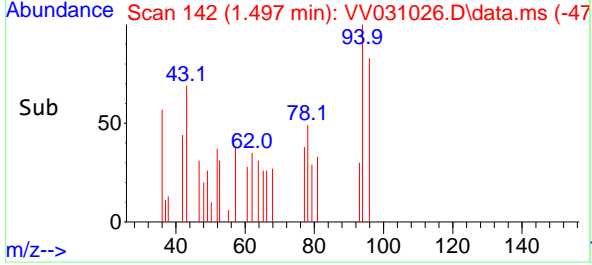
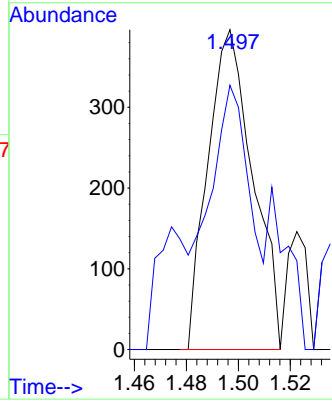
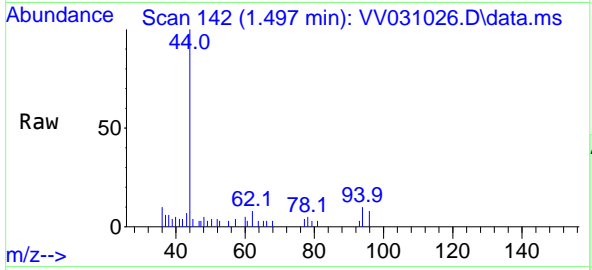




#6
 Bromomethane
 Concen: 0.096 ug/L
 RT: 1.497 min Scan# 14
 Delta R.T. 0.006 min
 Lab File: VV031026.D
 Acq: 15 May 2023 13:00

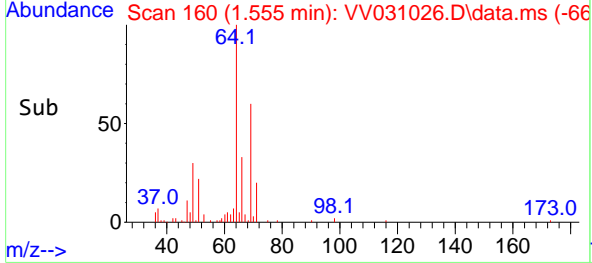
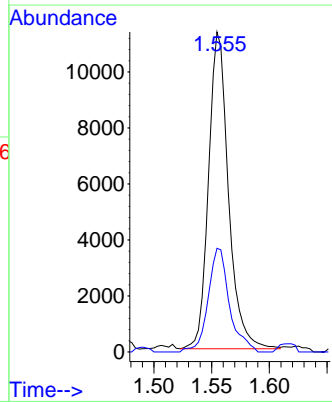
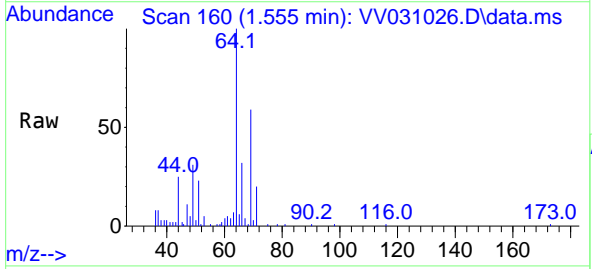
Instrument : MSVOA_V
 ClientSampleId :

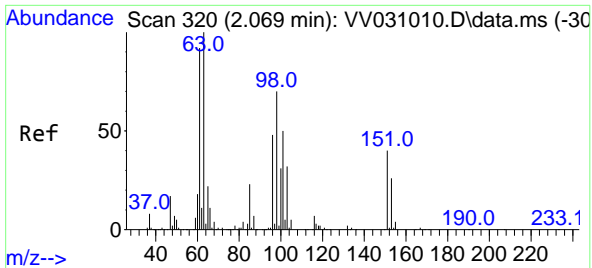
Tgt Ion: 94 Resp: 476
 Ion Ratio Lower Upper
 94 100
 96 82.6 63.4 117.8



#8
 Chloroethane
 Concen: 2.142 ug/L
 RT: 1.555 min Scan# 160
 Delta R.T. 0.003 min
 Lab File: VV031026.D
 Acq: 15 May 2023 13:00

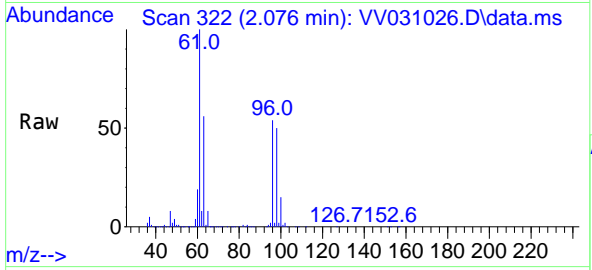
Tgt Ion: 64 Resp: 13543
 Ion Ratio Lower Upper
 64 100
 66 32.4 22.1 41.1





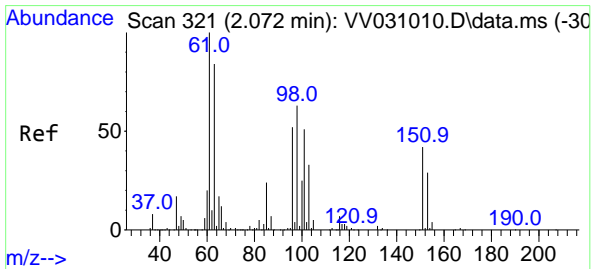
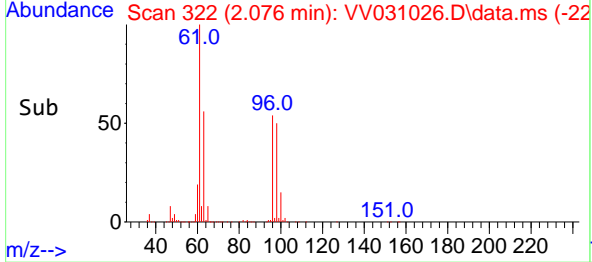
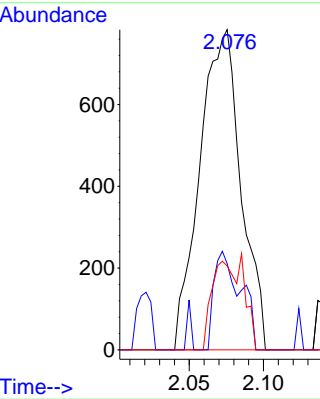
#10
 1,1,2-Trichloro-1,2,2-trifluoroethane
 Concen: 0.155 ug/L
 RT: 2.076 min Scan# 311
 Delta R.T. 0.006 min
 Lab File: VV031026.D
 Acq: 15 May 2023 13:00

Instrument : MSVOA_V
 ClientSampleId :



Tgt Ion: 101 Resp: 1513

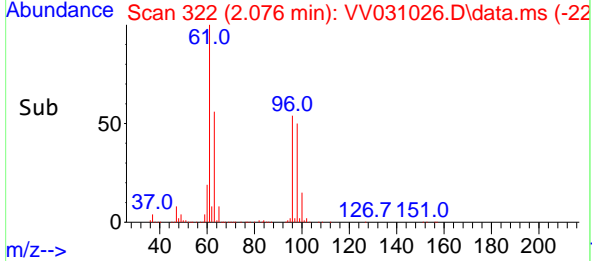
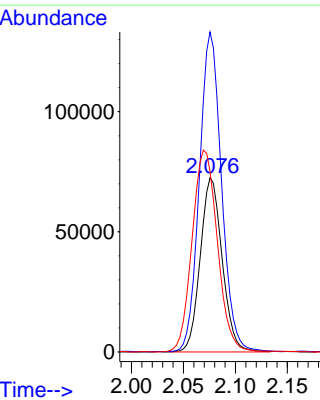
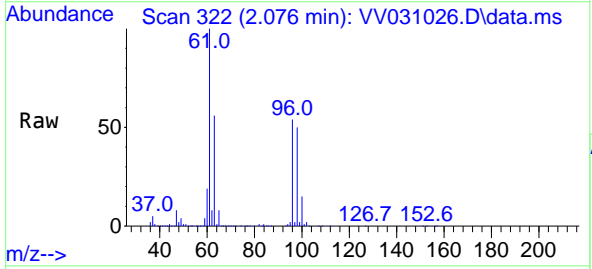
Ion	Ratio	Lower	Upper
101	100		
85	14.3	38.7	58.1#
151	21.5	65.1	97.7#

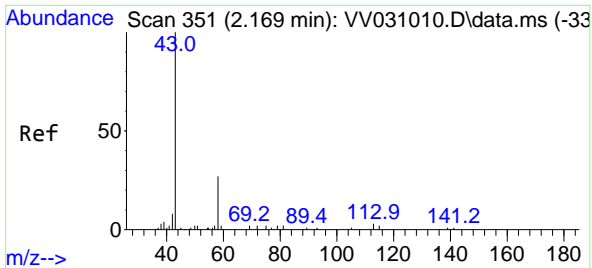


#12
 1,1-Dichloroethene
 Concen: 11.803 ug/L
 RT: 2.076 min Scan# 322
 Delta R.T. 0.003 min
 Lab File: VV031026.D
 Acq: 15 May 2023 13:00

Tgt Ion: 96 Resp: 106332

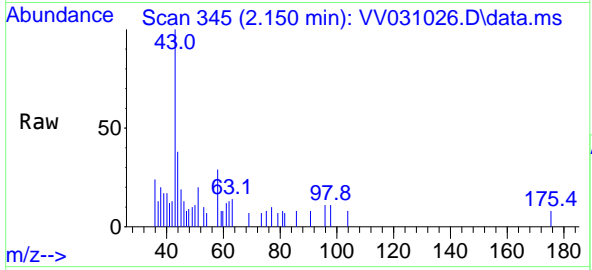
Ion	Ratio	Lower	Upper
96	100		
61	183.7	135.6	251.8
63	103.7	121.1	224.9#



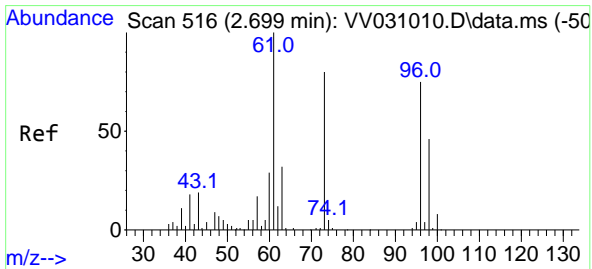
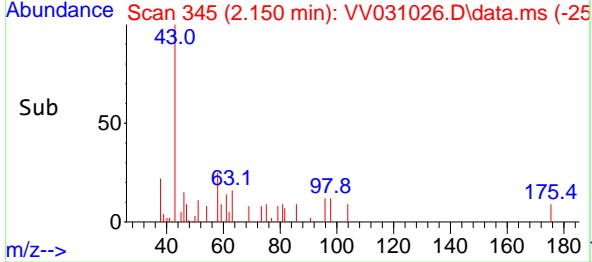
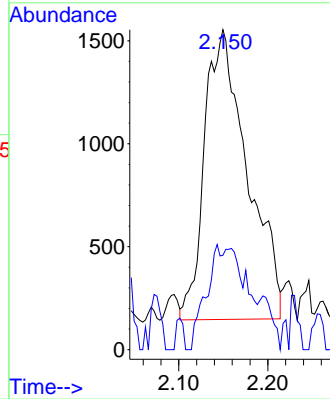


#13
 Acetone
 Concen: 2.816 ug/L
 RT: 2.150 min Scan# 34
 Delta R.T. -0.010 min
 Lab File: VV031026.D
 Acq: 15 May 2023 13:00

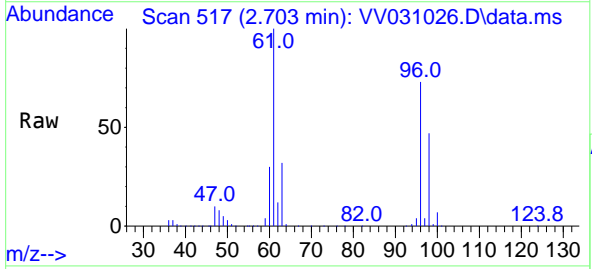
Instrument :
 MSVOA_V
 ClientSampleId :



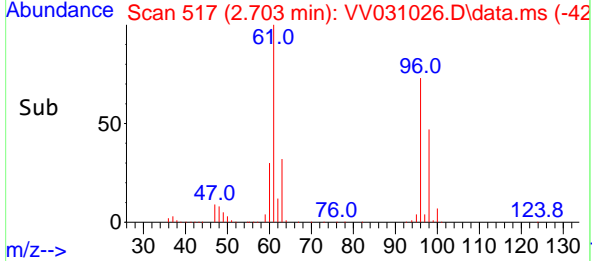
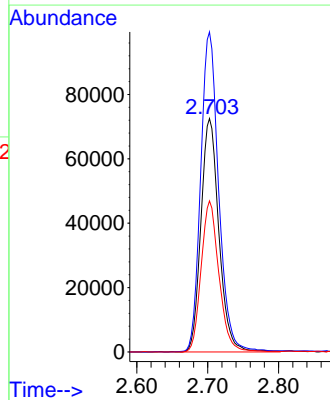
Tgt Ion: 43 Resp: 4704
 Ion Ratio Lower Upper
 43 100
 58 14.4 0.0 37.0

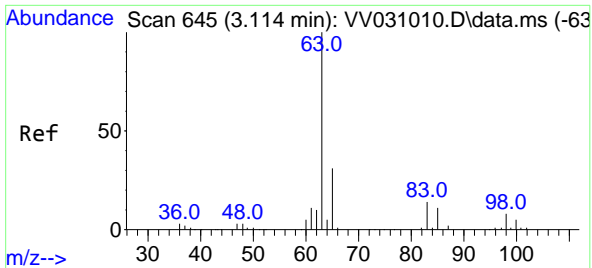


#18
 trans-1,2-Dichloroethene
 Concen: 15.536 ug/L
 RT: 2.703 min Scan# 517
 Delta R.T. 0.003 min
 Lab File: VV031026.D
 Acq: 15 May 2023 13:00



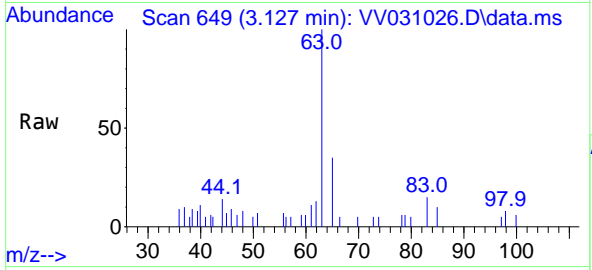
Tgt Ion: 96 Resp: 127847
 Ion Ratio Lower Upper
 96 100
 61 137.0 98.9 183.7
 98 64.7 46.0 85.4





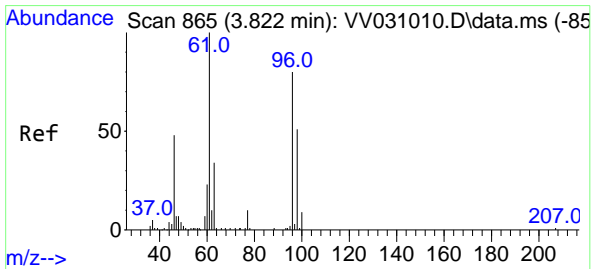
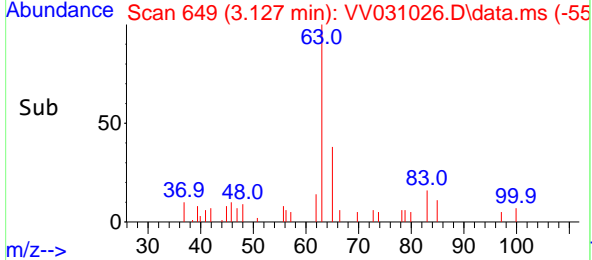
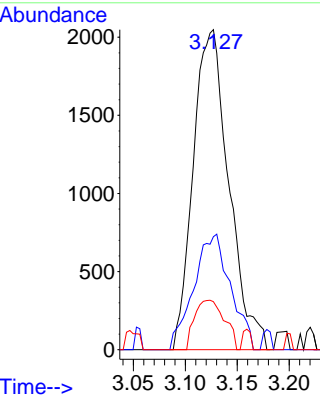
#19
 1,1-Dichloroethane
 Concen: 0.307 ug/L
 RT: 3.127 min Scan# 649
 Delta R.T. 0.010 min
 Lab File: VV031026.D
 Acq: 15 May 2023 13:00

Instrument : MSVOA_V
 ClientSampleId :

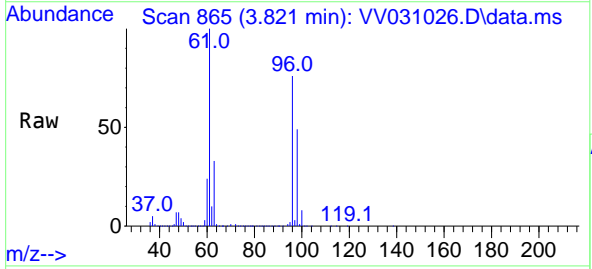


Tgt Ion: 63 Resp: 4881

Ion	Ratio	Lower	Upper
63	100		
65	35.3	21.8	40.6
83	15.0	10.2	19.0

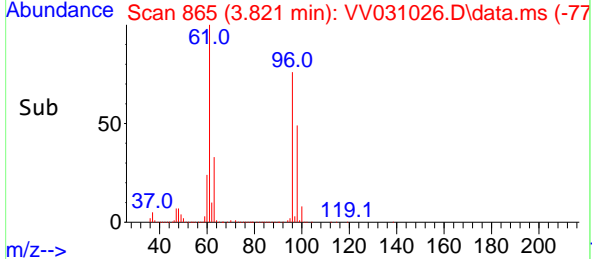
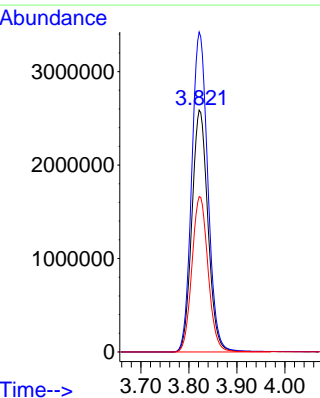


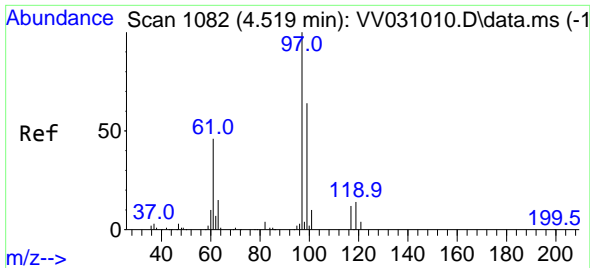
#22
 cis-1,2-Dichloroethene
 Concen: 693.404 ug/L
 RT: 3.821 min Scan# 865
 Delta R.T. -0.003 min
 Lab File: VV031026.D
 Acq: 15 May 2023 13:00



Tgt Ion: 96 Resp: 6020314

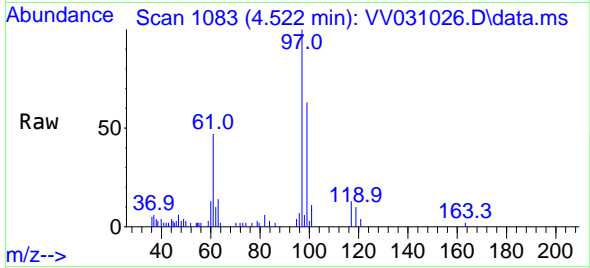
Ion	Ratio	Lower	Upper
96	100		
61	132.3	86.0	159.6
98	64.2	43.2	80.2



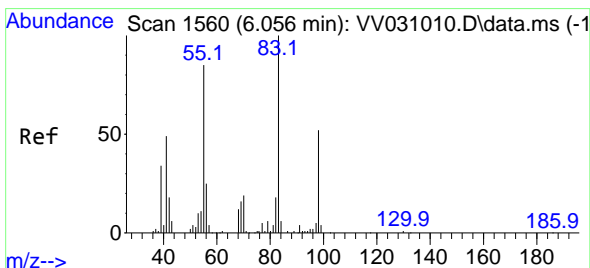
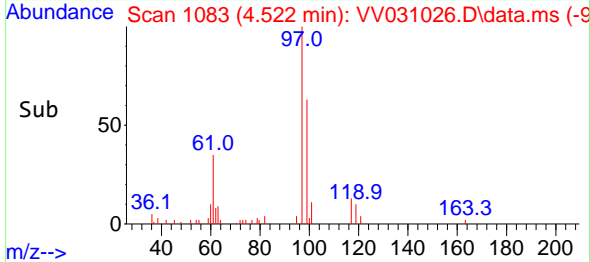
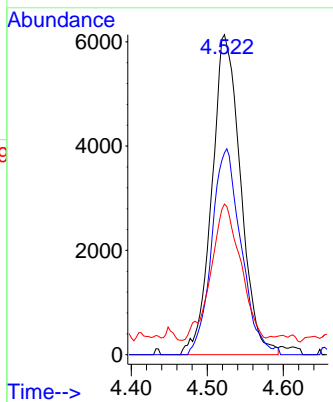


#29
 1,1,1-Trichloroethane
 Concen: 0.972 ug/L
 RT: 4.522 min Scan# 1082
 Delta R.T. 0.003 min
 Lab File: VV031026.D
 Acq: 15 May 2023 13:00

Instrument : MSVOA_V
 ClientSampleId :

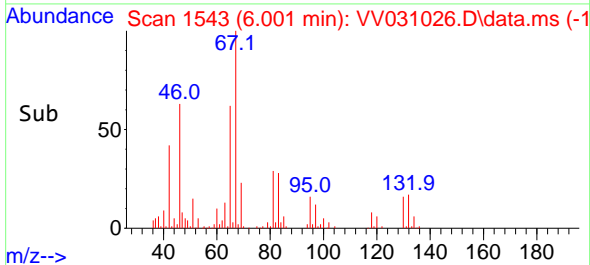
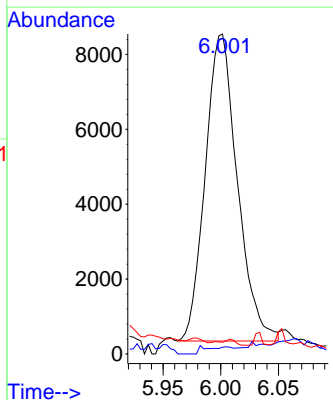
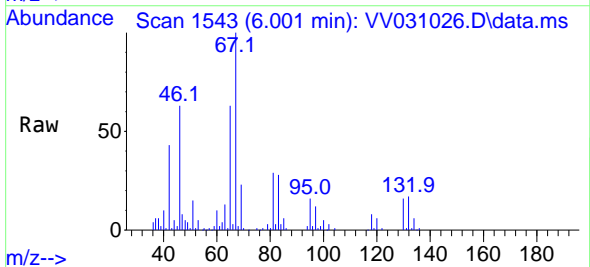


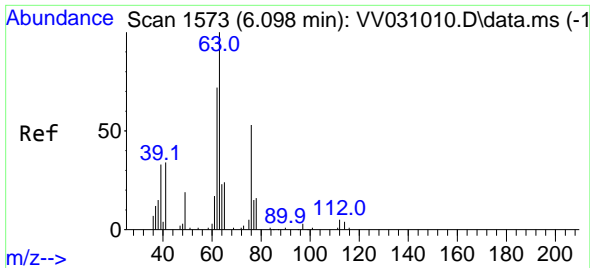
Tgt Ion: 97 Resp: 16095
 Ion Ratio Lower Upper
 97 100
 99 66.2 51.4 77.2
 61 43.8 37.4 56.0



#35
 Methylcyclohexane
 Concen: 1.158 ug/L
 RT: 6.001 min Scan# 1543
 Delta R.T. -0.055 min
 Lab File: VV031026.D
 Acq: 15 May 2023 13:00

Tgt Ion: 83 Resp: 15865
 Ion Ratio Lower Upper
 83 100
 55 1.1 62.9 94.3#
 98 0.0 40.5 60.7#

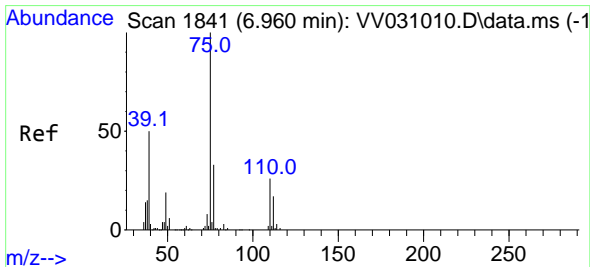
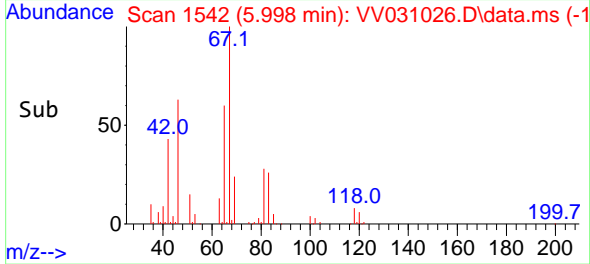
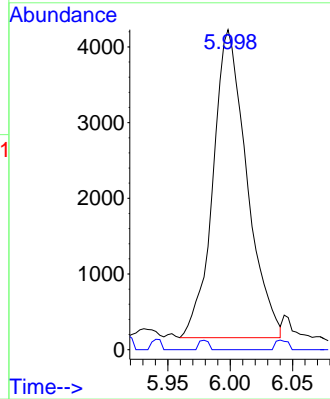
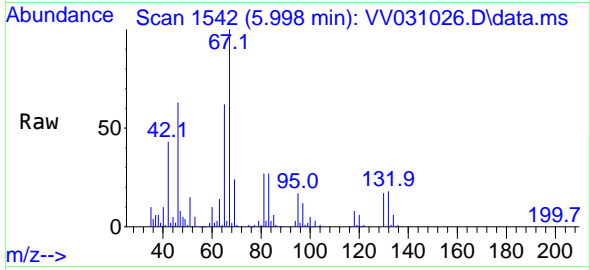




#37
 1,2-Dichloropropane
 Concen: 0.978 ug/L
 RT: 5.998 min Scan# 11
 Delta R.T. -0.103 min
 Lab File: VV031026.D
 Acq: 15 May 2023 13:00

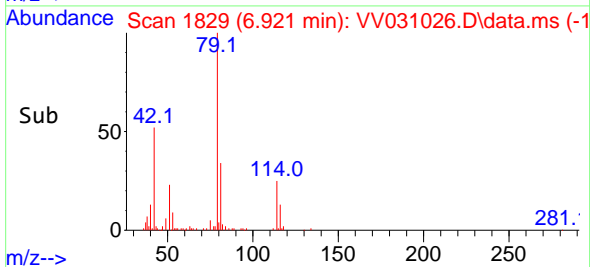
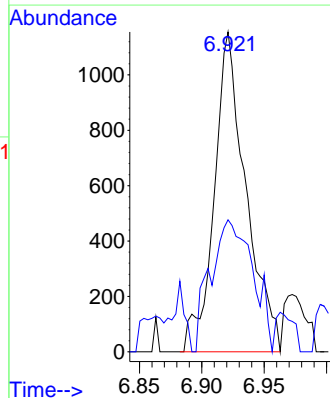
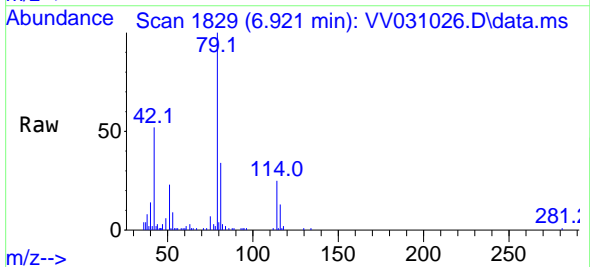
Instrument :
 MSVOA_V
 ClientSampleId :

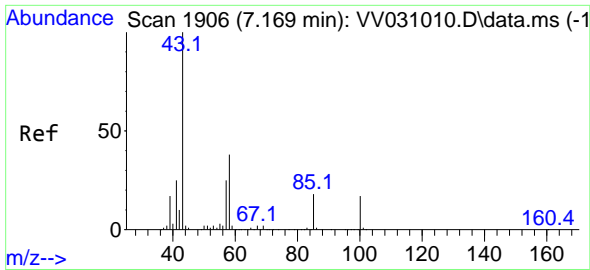
Tgt Ion: 63 Resp: 7688
 Ion Ratio Lower Upper
 63 100
 112 0.9 3.8 5.8#



#39
 cis-1,3-Dichloropropene
 Concen: 0.174 ug/L
 RT: 6.921 min Scan# 1829
 Delta R.T. -0.039 min
 Lab File: VV031026.D
 Acq: 15 May 2023 13:00

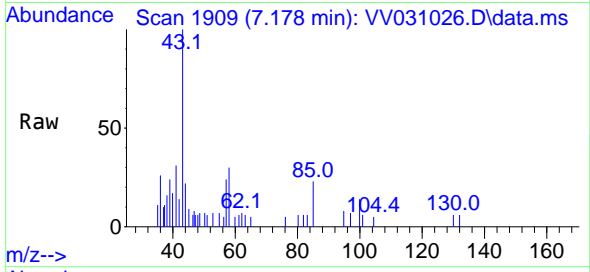
Tgt Ion: 75 Resp: 2046
 Ion Ratio Lower Upper
 75 100
 77 41.3 22.6 42.0



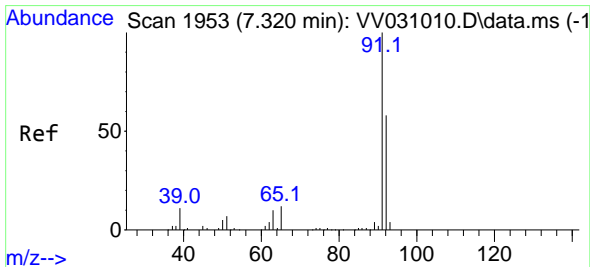
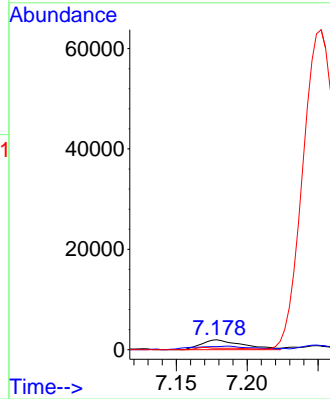
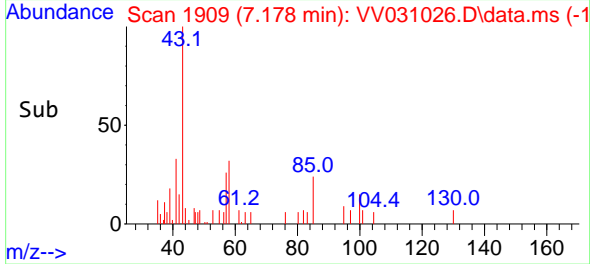


#40
 4-Methyl-2-pentanone
 Concen: 0.984 ug/L
 RT: 7.178 min Scan# 1909
 Delta R.T. 0.010 min
 Lab File: VV031026.D
 Acq: 15 May 2023 13:00

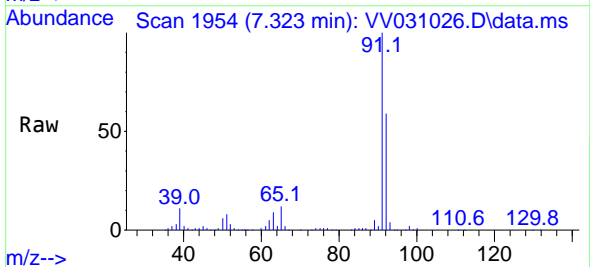
Instrument : MSVOA_V
 ClientSampleId :



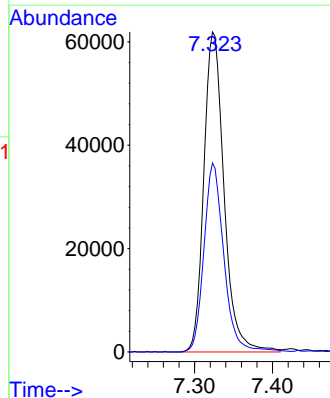
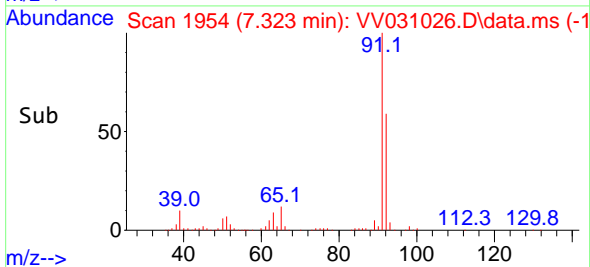
Tgt Ion: 43 Resp: 4009
 Ion Ratio Lower Upper
 43 100
 58 50.3 28.3 42.5#
 100 0.0 11.8 17.8#

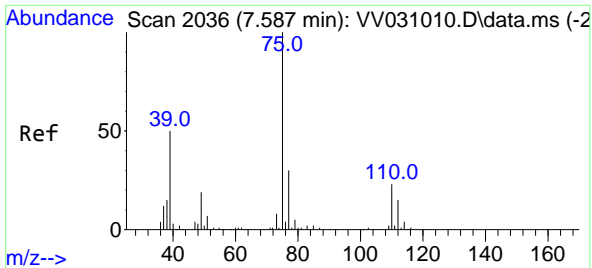


#42
 Toluene
 Concen: 3.128 ug/L
 RT: 7.323 min Scan# 1954
 Delta R.T. -0.000 min
 Lab File: VV031026.D
 Acq: 15 May 2023 13:00



Tgt Ion: 91 Resp: 111636
 Ion Ratio Lower Upper
 91 100
 92 59.0 40.5 75.1

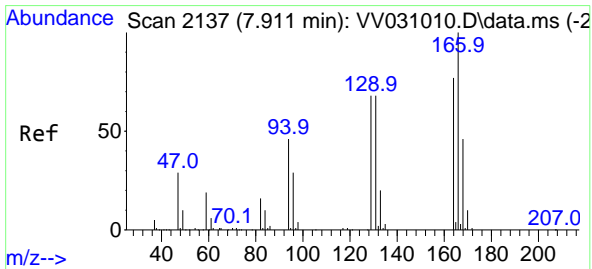
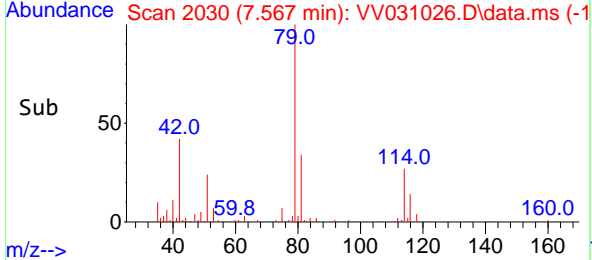
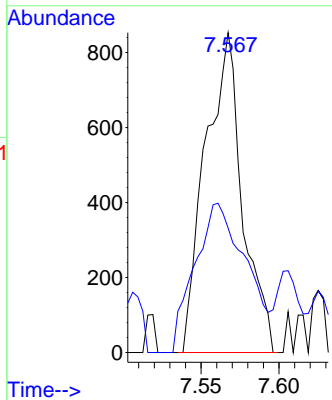
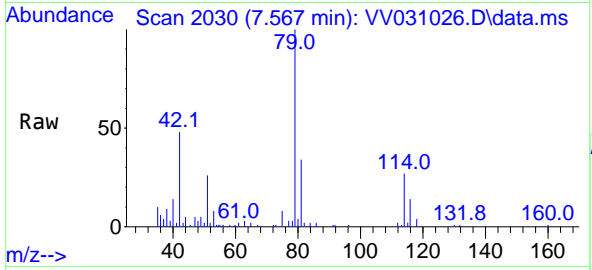




#44
 trans-1,3-Dichloropropene
 Concen: 0.140 ug/L
 RT: 7.567 min Scan# 2030
 Delta R.T. -0.023 min
 Lab File: VV031026.D
 Acq: 15 May 2023 13:00

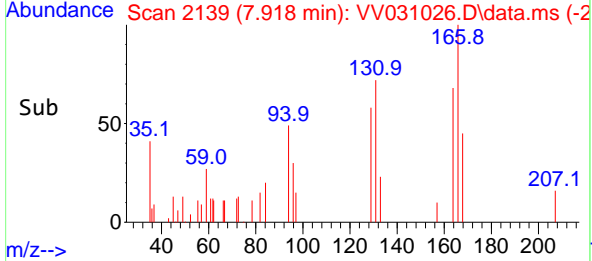
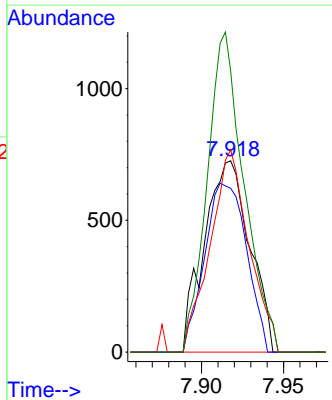
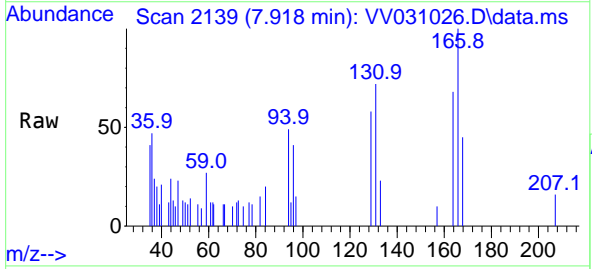
Instrument : MSVOA_V
 ClientSampleId :

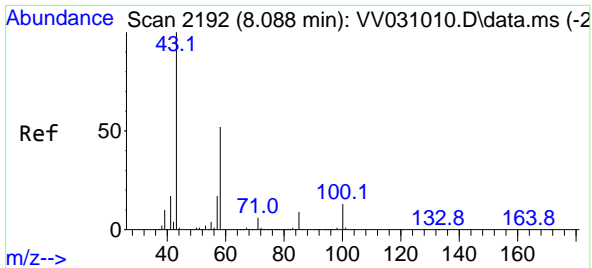
Tgt Ion: 75 Resp: 1406
 Ion Ratio Lower Upper
 75 100
 77 38.9 21.6 40.0



#47
 Tetrachloroethene
 Concen: 0.165 ug/L
 RT: 7.918 min Scan# 2139
 Delta R.T. 0.006 min
 Lab File: VV031026.D
 Acq: 15 May 2023 13:00

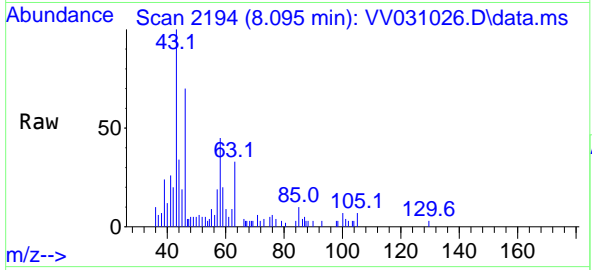
Tgt Ion: 164 Resp: 1394
 Ion Ratio Lower Upper
 164 100
 129 85.7 60.5 112.3
 131 105.8 60.8 112.8
 166 147.0 85.9 159.5





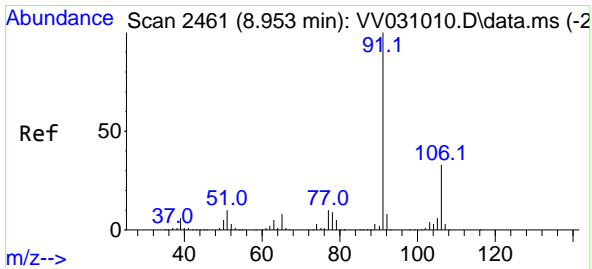
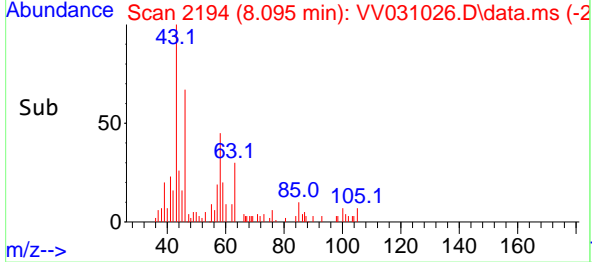
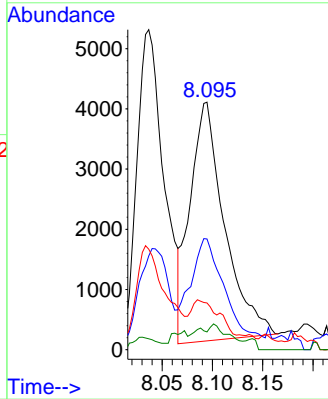
#48
 2-Hexanone
 Concen: 3.047 ug/L
 RT: 8.095 min Scan# 2192
 Delta R.T. 0.010 min
 Lab File: VV031026.D
 Acq: 15 May 2023 13:00

Instrument : MSVOA_V
 ClientSampleId :

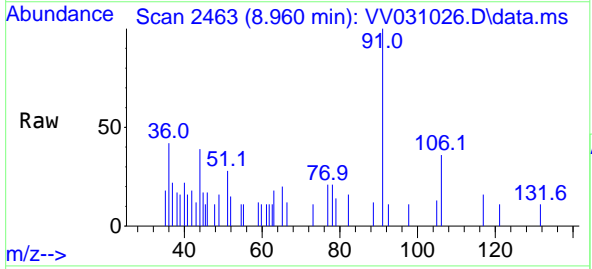


Tgt Ion: 43 Resp: 9522

Ion	Ratio	Lower	Upper
43	100		
58	41.6	39.9	59.9
57	22.5	14.1	21.1#
100	3.7	9.7	14.5#

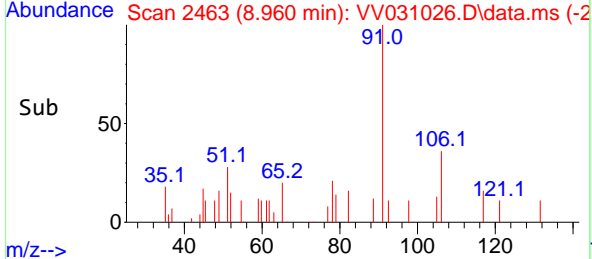
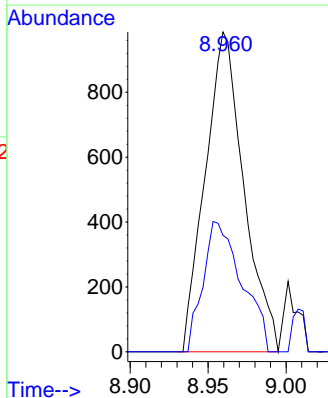


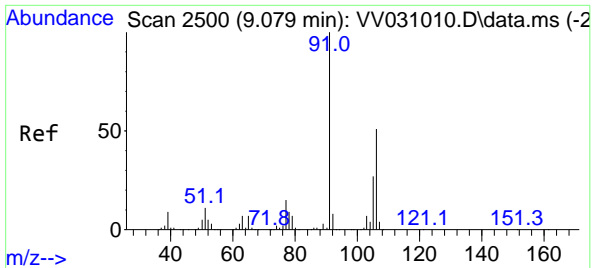
#52
 Ethylbenzene
 Concen: 0.044 ug/L
 RT: 8.960 min Scan# 2463
 Delta R.T. 0.006 min
 Lab File: VV031026.D
 Acq: 15 May 2023 13:00



Tgt Ion: 91 Resp: 1699

Ion	Ratio	Lower	Upper
91	100		
106	36.4	21.4	39.8

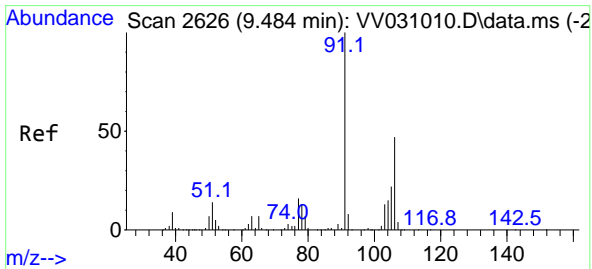
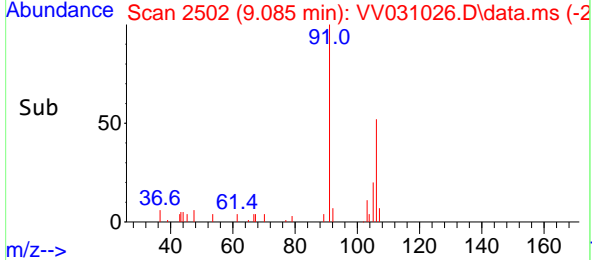
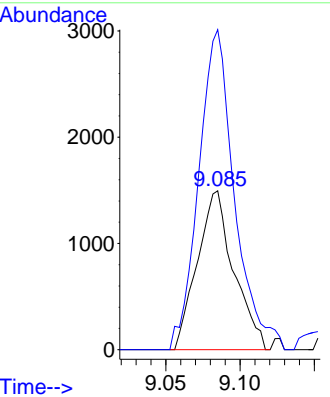
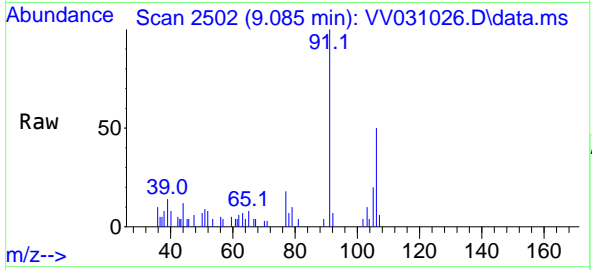




#53
 m,p-Xylene
 Concen: 0.164 ug/L
 RT: 9.085 min Scan# 21
 Delta R.T. 0.006 min
 Lab File: VV031026.D
 Acq: 15 May 2023 13:00

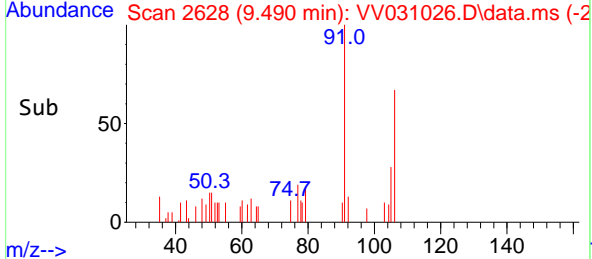
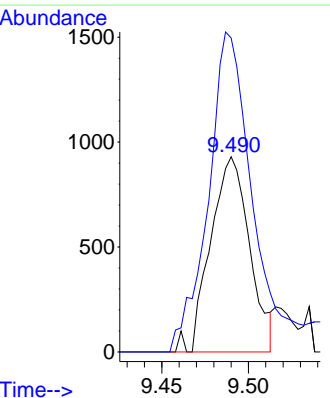
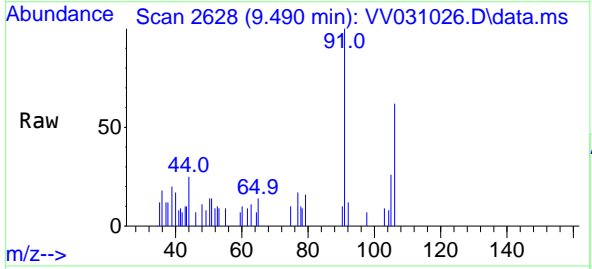
Instrument : MSVOA_V
 ClientSampleId :

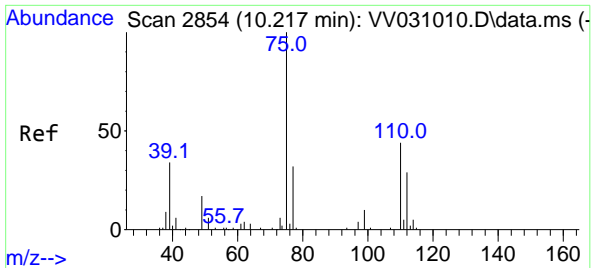
Tgt Ion:106 Resp: 2550
 Ion Ratio Lower Upper
 106 100
 91 201.5 138.7 257.5



#54
 o-Xylene
 Concen: 0.098 ug/L
 RT: 9.490 min Scan# 2628
 Delta R.T. 0.006 min
 Lab File: VV031026.D
 Acq: 15 May 2023 13:00

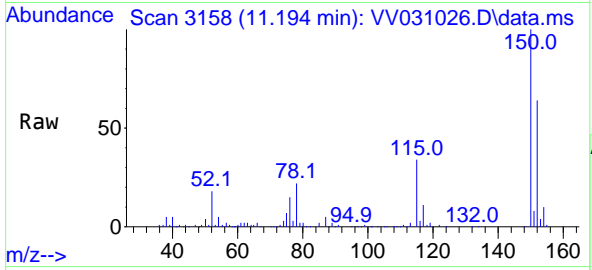
Tgt Ion:106 Resp: 1454
 Ion Ratio Lower Upper
 106 100
 91 160.9 145.1 269.5





#61
 1,2,3-Trichloropropane
 Concen: 1.702 ug/L
 RT: 11.194 min Scan# 31
 Delta R.T. 0.977 min
 Lab File: VV031026.D
 Acq: 15 May 2023 13:00

Instrument :
 MSVOA_V
 ClientSampleId :



Tgt Ion: 75 Resp: 7238

Ion	Ratio	Lower	Upper
75	100		
77	40.2	25.3	37.9#
110	4.2	34.0	51.0#

