

Data Path : Z:\voasrv\HPCHEM1\MSVOA\_V\Data\VW051723\  
 Data File : VW031067.D  
 Acq On : 17 May 2023 12:34  
 Operator : SY/MD  
 Sample : 02822-12  
 Misc : 25.0mL/MSVOA\_V/WATER  
 ALS Vial : 6 Sample Multiplier: 1

Instrument :  
 MSVOA\_V  
 ClientSampleId :  
 CONP9

Quant Time: May 18 02:48:48 2023  
 Quant Method : Z:\voasrv\HPCHEM1\MSVOA\_V\Method\SFAMVTR042823WMA.M  
 Quant Title : TRACE VOA SFAM1.0  
 QLast Update : Thu May 18 02:47:29 2023  
 Response via : Initial Calibration

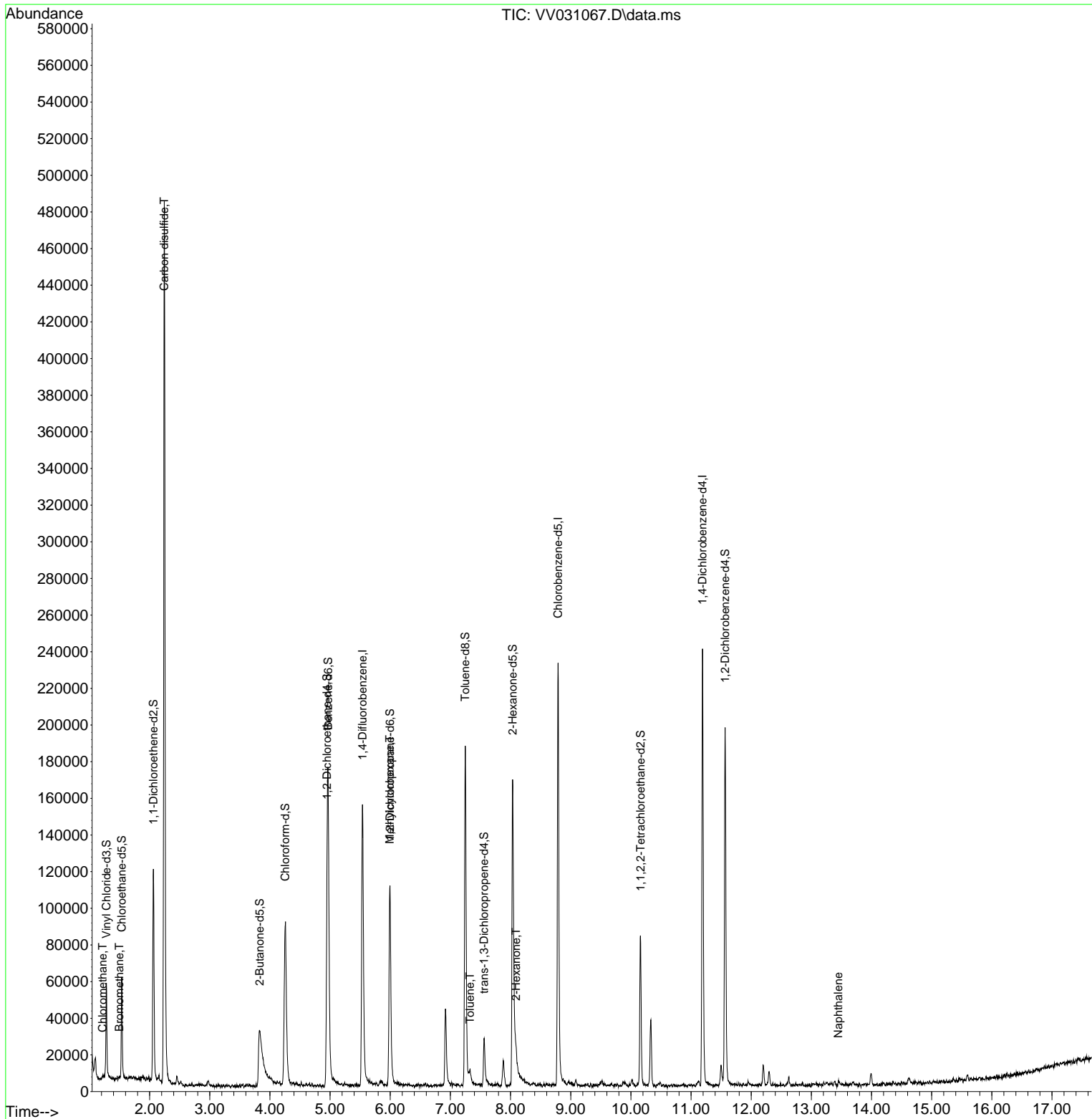
| Compound                      | R.T.   | QIon           | Response | Conc   | Units    | Dev(Min) |
|-------------------------------|--------|----------------|----------|--------|----------|----------|
| Internal Standards            |        |                |          |        |          |          |
| 1) 1,4-Difluorobenzene        | 5.539  | 114            | 134332   | 5.000  | ug/L     | 0.00     |
| 28) Chlorobenzene-d5          | 8.789  | 117            | 131574   | 5.000  | ug/L     | 0.00     |
| 58) 1,4-Dichlorobenzene-d4    | 11.191 | 152            | 66094    | 5.000  | ug/L     | 0.00     |
| System Monitoring Compounds   |        |                |          |        |          |          |
| 4) Vinyl Chloride-d3          | 1.282  | 65             | 33380    | 3.016  | ug/L     | 0.00     |
| Spiked Amount                 | 5.000  | Range 40 - 130 | Recovery | =      | 60.400%  |          |
| 7) Chloroethane-d5            | 1.536  | 69             | 36218    | 4.012  | ug/L     | 0.00     |
| Spiked Amount                 | 5.000  | Range 65 - 130 | Recovery | =      | 80.200%  |          |
| 11) 1,1-Dichloroethene-d2     | 2.063  | 65             | 18198    | 3.107  | ug/L     | 0.00     |
| Spiked Amount                 | 5.000  | Range 60 - 125 | Recovery | =      | 62.200%  |          |
| 20) 2-Butanone-d5             | 3.828  | 46             | 79527    | 40.521 | ug/L     | 0.00     |
| Spiked Amount                 | 50.000 | Range 40 - 130 | Recovery | =      | 81.040%  |          |
| 24) Chloroform-d              | 4.253  | 84             | 93279    | 4.241  | ug/L     | 0.00     |
| Spiked Amount                 | 5.000  | Range 70 - 125 | Recovery | =      | 84.800%  |          |
| 26) 1,2-Dichloroethane-d4     | 4.950  | 65             | 46670    | 4.174  | ug/L     | 0.00     |
| Spiked Amount                 | 5.000  | Range 70 - 130 | Recovery | =      | 83.400%  |          |
| 32) Benzene-d6                | 4.966  | 84             | 150424   | 3.900  | ug/L     | 0.00     |
| Spiked Amount                 | 5.000  | Range 70 - 125 | Recovery | =      | 78.000%  |          |
| 36) 1,2-Dichloropropane-d6    | 5.995  | 67             | 45586    | 4.065  | ug/L     | 0.00     |
| Spiked Amount                 | 5.000  | Range 60 - 140 | Recovery | =      | 81.200%  |          |
| 41) Toluene-d8                | 7.246  | 98             | 126795   | 3.452  | ug/L     | 0.00     |
| Spiked Amount                 | 5.000  | Range 70 - 130 | Recovery | =      | 69.000%# |          |
| 43) trans-1,3-Dichloroprop... | 7.561  | 79             | 14707    | 3.498  | ug/L     | 0.00     |
| Spiked Amount                 | 5.000  | Range 55 - 130 | Recovery | =      | 70.000%  |          |
| 46) 2-Hexanone-d5             | 8.034  | 63             | 62327    | 42.317 | ug/L     | 0.00     |
| Spiked Amount                 | 50.000 | Range 45 - 130 | Recovery | =      | 84.640%  |          |
| 56) 1,1,2,2-Tetrachloroeth... | 10.159 | 84             | 35133    | 4.322  | ug/L     | 0.00     |
| Spiked Amount                 | 5.000  | Range 65 - 120 | Recovery | =      | 86.400%  |          |
| 66) 1,2-Dichlorobenzene-d4    | 11.567 | 152            | 51358    | 4.169  | ug/L     | 0.00     |
| Spiked Amount                 | 5.000  | Range 80 - 120 | Recovery | =      | 83.400%  |          |
| Target Compounds              |        |                |          |        |          |          |
| 3) Chloromethane              | 1.217  | 50             | 1399     | 0.112  | ug/L #   | 80       |
| 6) Bromomethane               | 1.497  | 94             | 461      | 0.093  | ug/L     | 73       |
| 14) Carbon disulfide          | 2.243  | 76             | 562545   | 23.782 | ug/L     | 99       |
| 35) Methylcyclohexane         | 5.992  | 83             | 12817    | 0.937  | ug/L #   | 18       |
| 42) Toluene                   | 7.326  | 91             | 4839     | 0.136  | ug/L     | 94       |
| 48) 2-Hexanone                | 8.092  | 43             | 8351     | 2.677  | ug/L #   | 94       |
| 71) Naphthalene               | 13.448 | 128            | 1262     | 0.079  | ug/L #   | 91       |

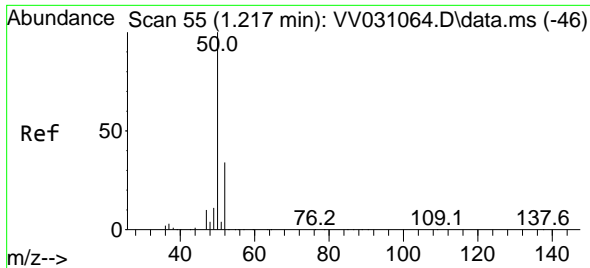
(#) = qualifier out of range (m) = manual integration (+) = signals summed

Data Path : Z:\voasrv\HPCHEM1\MSVOA\_V\Data\VV051723\  
 Data File : VV031067.D  
 Acq On : 17 May 2023 12:34  
 Operator : SY/MD  
 Sample : 02822-12  
 Misc : 25.0mL/MSVOA\_V/WATER  
 ALS Vial : 6 Sample Multiplier: 1

Instrument :  
 MSVOA\_V  
 ClientSampleId :  
 CONP9

Quant Time: May 18 02:48:48 2023  
 Quant Method : Z:\voasrv\HPCHEM1\MSVOA\_V\Method\SFAMVTR042823WMA.M  
 Quant Title : TRACE VOA SFAM1.0  
 QLast Update : Thu May 18 02:47:29 2023  
 Response via : Initial Calibration

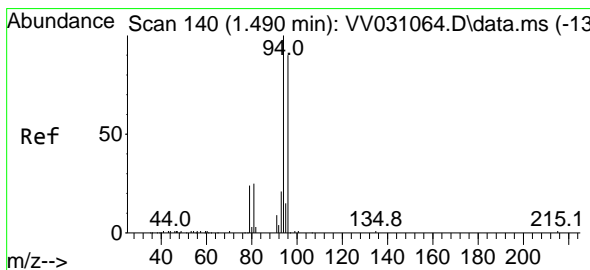
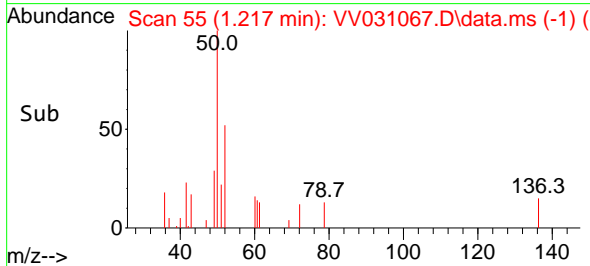
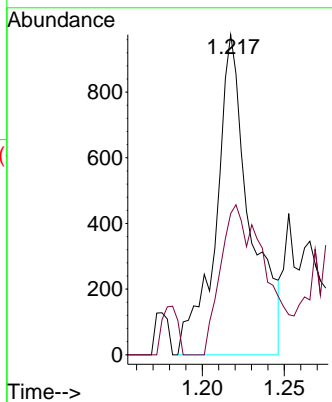
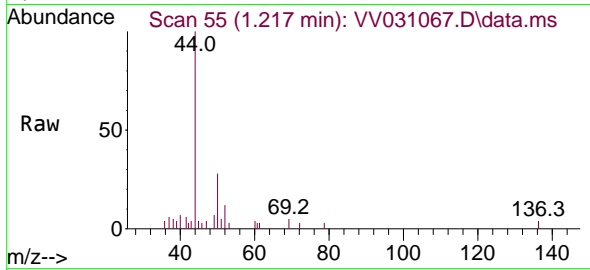




#3  
 Chloromethane  
 Concen: 0.112 ug/L  
 RT: 1.217 min Scan# 51  
 Delta R.T. 0.000 min  
 Lab File: VV031067.D  
 Acq: 17 May 2023 12:34

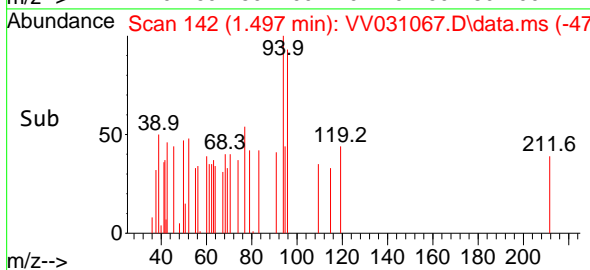
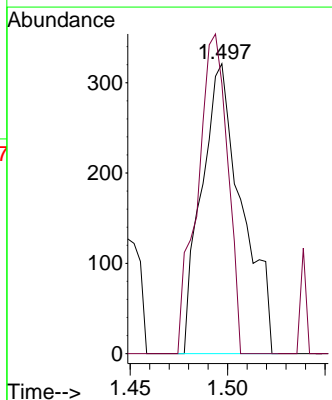
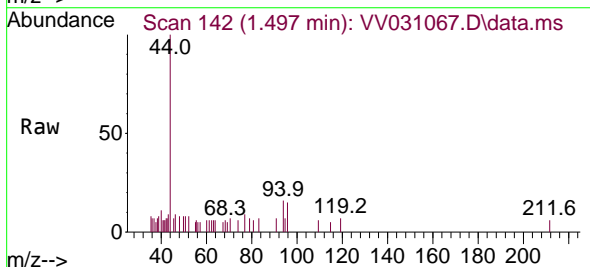
Instrument :  
 MSVOA\_V  
 ClientSampleId :  
 CONP9

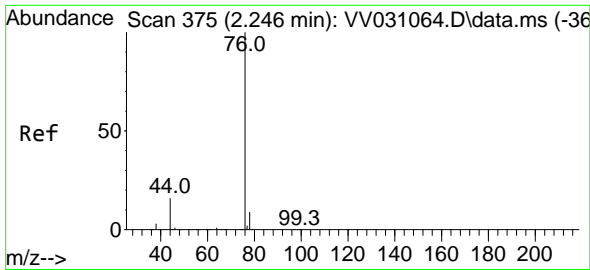
Tgt Ion: 50 Resp: 1399  
 Ion Ratio Lower Upper  
 50 100  
 52 44.1 22.8 42.4#



#6  
 Bromomethane  
 Concen: 0.093 ug/L  
 RT: 1.497 min Scan# 142  
 Delta R.T. 0.007 min  
 Lab File: VV031067.D  
 Acq: 17 May 2023 12:34

Tgt Ion: 94 Resp: 461  
 Ion Ratio Lower Upper  
 94 100  
 96 64.7 63.4 117.8

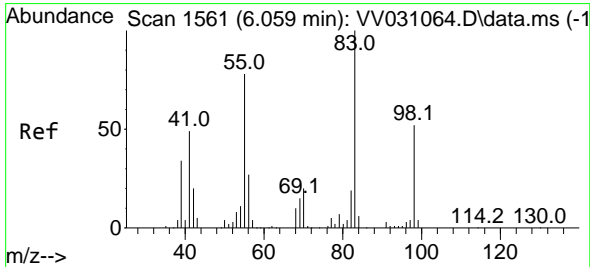
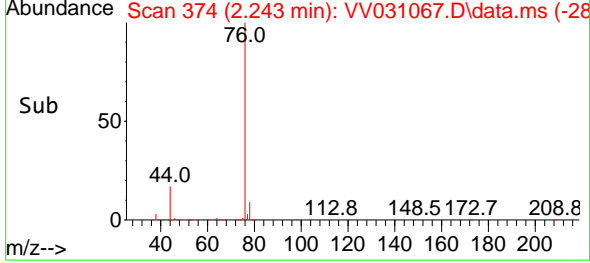
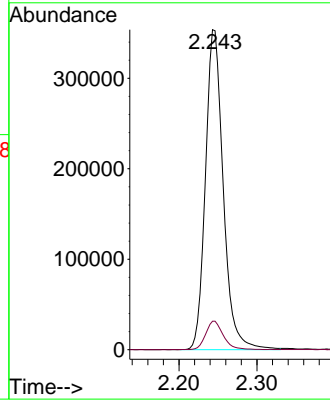
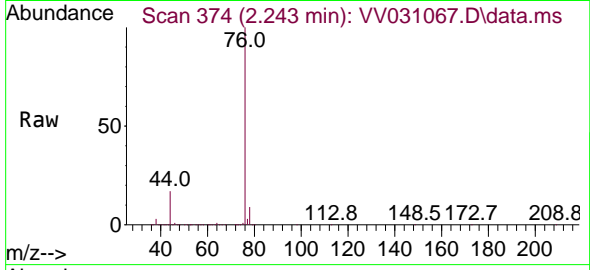




#14  
 Carbon disulfide  
 Concen: 23.782 ug/L  
 RT: 2.243 min Scan# 31  
 Delta R.T. -0.003 min  
 Lab File: VV031067.D  
 Acq: 17 May 2023 12:34

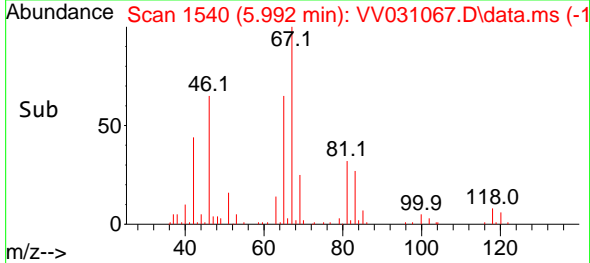
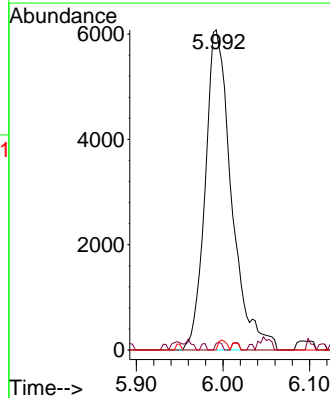
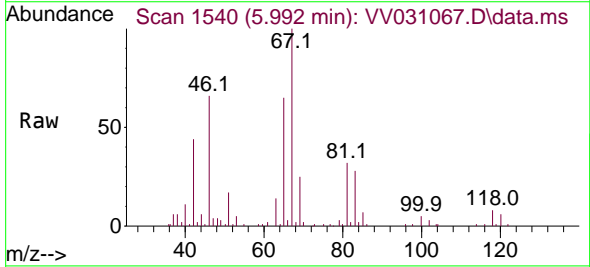
Instrument :  
 MSVOA\_V  
 ClientSampleId :  
 CONP9

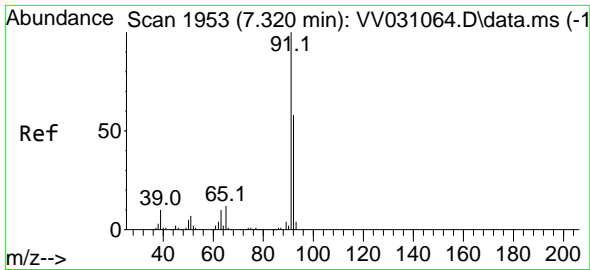
Tgt Ion: 76 Resp: 562545  
 Ion Ratio Lower Upper  
 76 100  
 78 8.9 6.8 10.2



#35  
 Methylcyclohexane  
 Concen: 0.937 ug/L  
 RT: 5.992 min Scan# 1540  
 Delta R.T. -0.067 min  
 Lab File: VV031067.D  
 Acq: 17 May 2023 12:34

Tgt Ion: 83 Resp: 12817  
 Ion Ratio Lower Upper  
 83 100  
 55 0.6 62.9 94.3#  
 98 0.9 40.5 60.7#

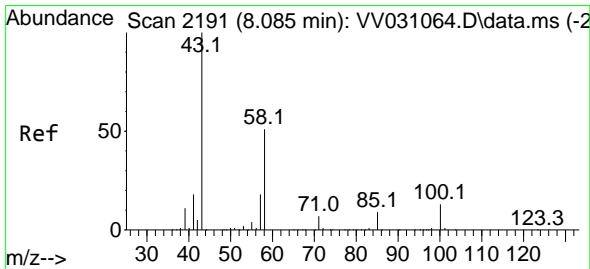
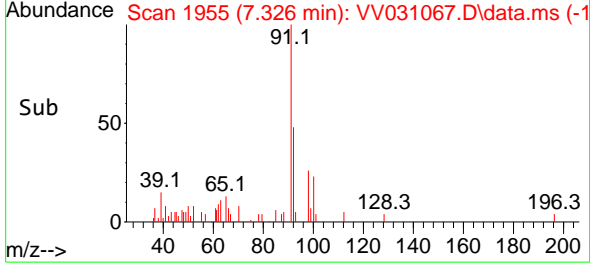
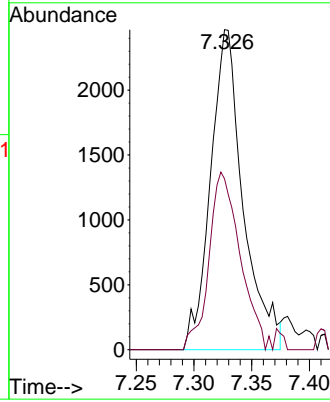
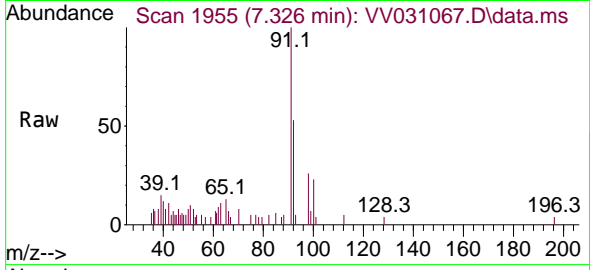




#42  
 Toluene  
 Concen: 0.136 ug/L  
 RT: 7.326 min Scan# 1953  
 Delta R.T. 0.007 min  
 Lab File: VV031067.D  
 Acq: 17 May 2023 12:34

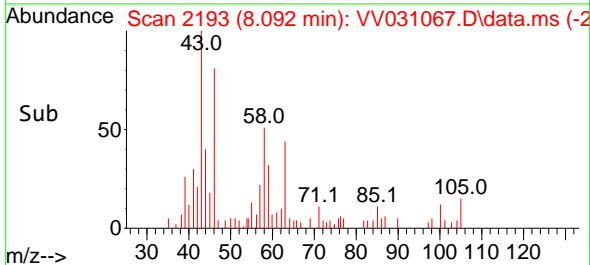
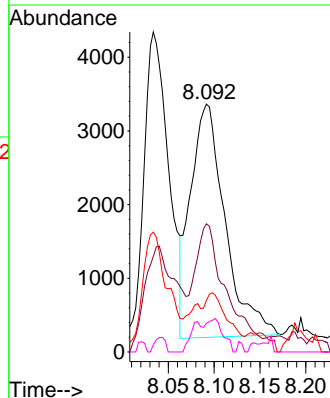
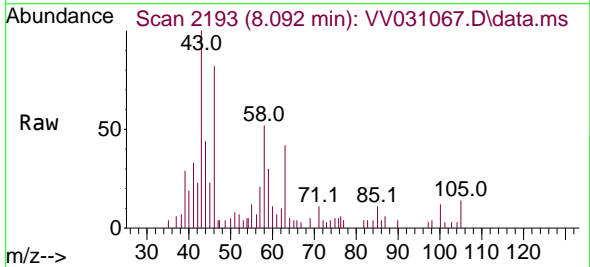
Instrument : MSVOA\_V  
 ClientSampleId : CONP9

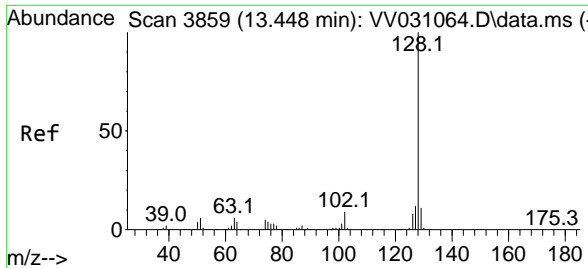
Tgt Ion: 91 Resp: 4839  
 Ion Ratio Lower Upper  
 91 100  
 92 53.4 40.5 75.1



#48  
 2-Hexanone  
 Concen: 2.677 ug/L  
 RT: 8.092 min Scan# 2193  
 Delta R.T. 0.007 min  
 Lab File: VV031067.D  
 Acq: 17 May 2023 12:34

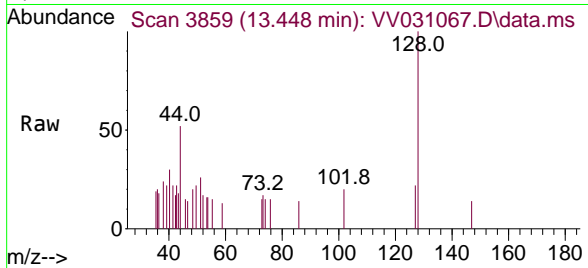
Tgt Ion: 43 Resp: 8351  
 Ion Ratio Lower Upper  
 43 100  
 58 50.8 39.9 59.9  
 57 11.8 14.1 21.1#  
 100 6.7 9.7 14.5#





#71  
 Naphthalene  
 Concen: 0.079 ug/L  
 RT: 13.448 min Scan# 3859  
 Delta R.T. 0.000 min  
 Lab File: VV031067.D  
 Acq: 17 May 2023 12:34

Instrument :  
 MSVOA\_V  
 ClientSampleId :  
 CONP9



Tgt Ion:128 Resp: 1262

| Ion | Ratio | Lower | Upper |
|-----|-------|-------|-------|
| 128 | 100   |       |       |
| 129 | 3.1   | 8.6   | 13.0# |
| 127 | 13.3  | 10.6  | 16.0  |

