

Data Path : Z:\voasrv\HPCHEM1\MSVOA\_V\Data\VV051723\  
 Data File : VV031074.D  
 Acq On : 17 May 2023 15:20  
 Operator : SY/MD  
 Sample : 02822-05  
 Misc : 25.0mL/MSVOA\_V/WATER  
 ALS Vial : 13 Sample Multiplier: 1

Instrument :  
 MSVOA\_V  
 ClientSampleId :  
 CONM3

Integration Parameters: rteint.p  
 Integrator: RTE  
 Smoothing : OFF Filtering: 5  
 Sampling : 1 Min Area: 1 % of largest Peak  
 Start Thrs: 0.2 Max Peaks: 100  
 Stop Thrs : 0 Peak Location: TOP

If leading or trailing edge < 100 prefer < Baseline drop else tangent >  
 Peak separation: 5

Method : Z:\voasrv\HPCHEM1\MSVOA\_V\Method\SFAMVTR042823WMA.M  
 Title : TRACE VOA SFAM1.0

Signal : TIC: VV031074.D\data.ms

peak #	R.T. min	first scan	max scan	last scan	PK TY	peak height	corr. area	corr. % max.	% of total
1	1.281	67	75	88	rBV	50648	56883	11.97%	1.414%
2	1.539	148	155	167	rVB	55495	68958	14.51%	1.714%
3	2.066	306	319	334	rBV	111645	167316	35.21%	4.160%
4	3.815	848	863	893	rBV2	46099	162235	34.15%	4.033%
5	4.262	987	1002	1024	rBV2	91119	231928	48.81%	5.766%
6	4.966	1204	1221	1247	rBV3	179465	475134	100.00%	11.812%
7	5.542	1386	1400	1422	rBV	143509	308470	64.92%	7.669%
8	5.850	1482	1496	1505	rBV10	8803	19717	4.15%	0.490%
9	5.998	1529	1542	1563	rBV2	112741	237921	50.07%	5.915%
10	6.921	1816	1829	1845	rBV	44993	89086	18.75%	2.215%
11	7.252	1920	1932	1949	rBV	196003	354433	74.60%	8.812%
12	7.564	2020	2029	2043	rBV	27980	53897	11.34%	1.340%
13	7.879	2120	2127	2138	rVB3	13125	23221	4.89%	0.577%
14	8.033	2164	2175	2205	rBV	185521	414461	87.23%	10.304%
15	8.792	2400	2411	2436	rBV	229323	387414	81.54%	9.632%
16	10.159	2825	2836	2851	rBV	85577	141667	29.82%	3.522%
17	10.332	2878	2890	2901	rVB2	39942	68522	14.42%	1.704%
18	11.194	3147	3158	3177	rBV	229500	372048	78.30%	9.250%
19	11.500	3244	3253	3263	rBV6	10848	23209	4.88%	0.577%
20	11.570	3264	3275	3290	rVB	207176	337867	71.11%	8.400%
21	12.207	3461	3473	3482	rBV2	15852	27937	5.88%	0.695%

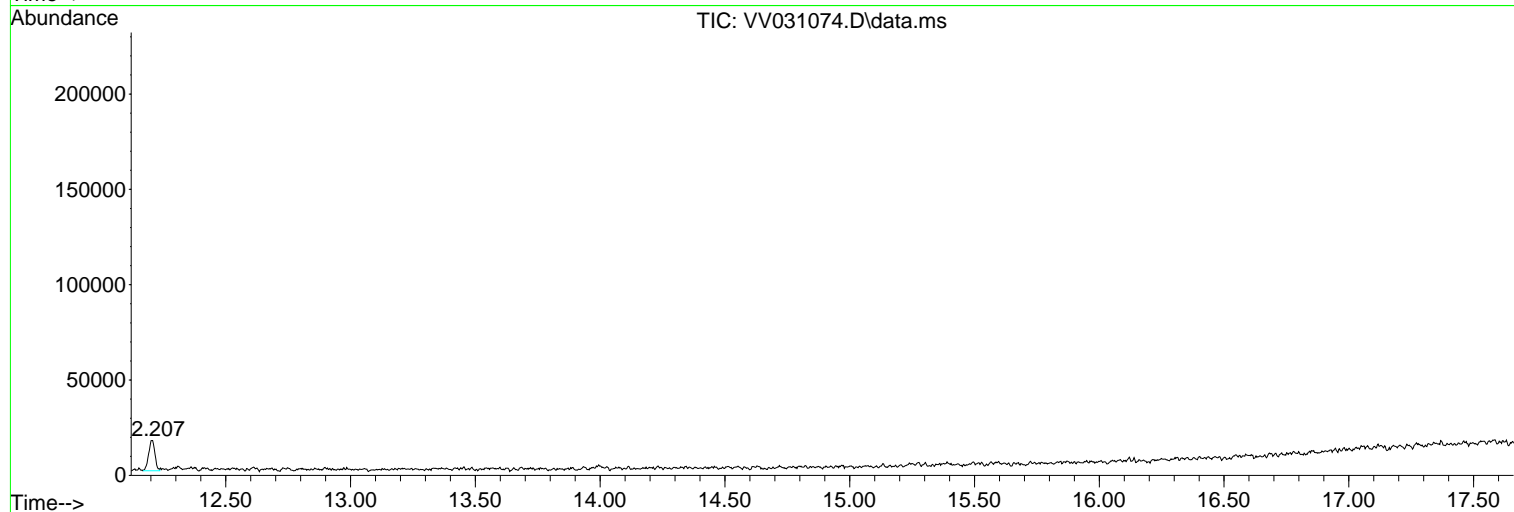
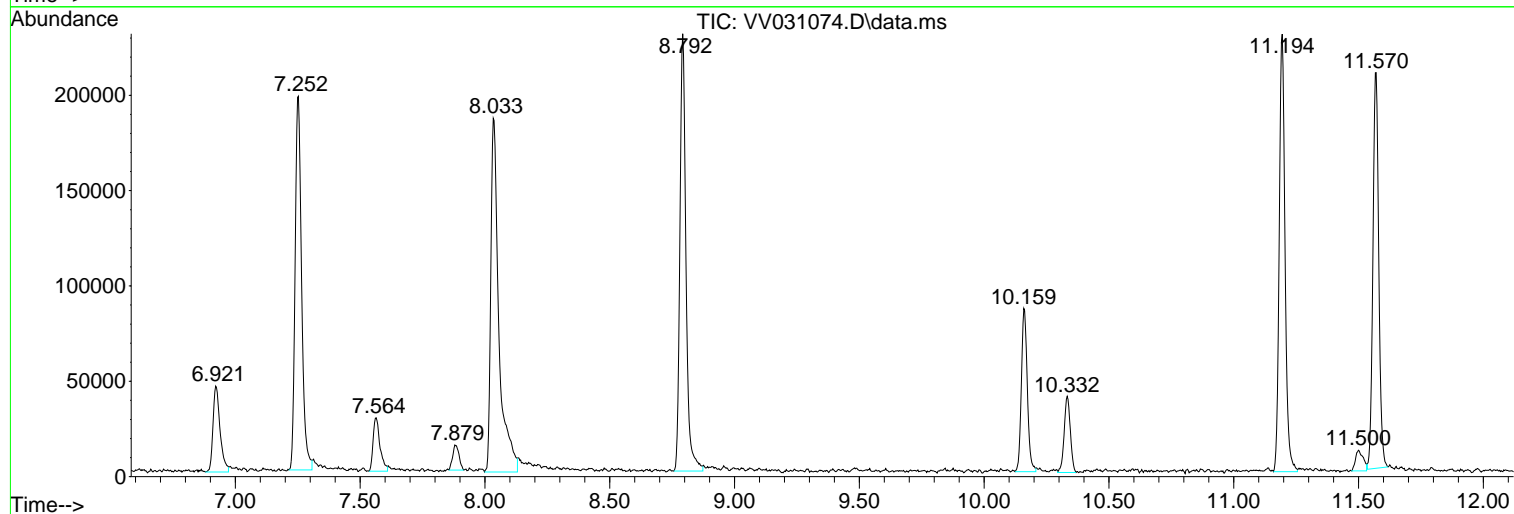
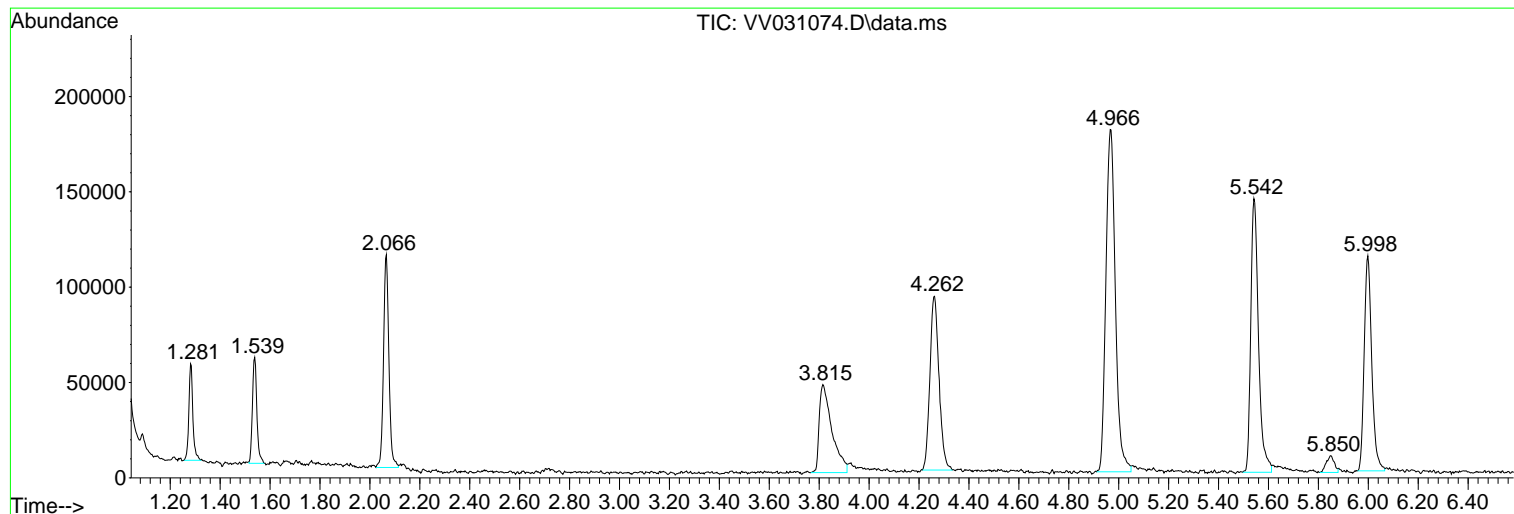
Sum of corrected areas: 4022324

Data Path : Z:\voasrv\HPCHEM1\MSVOA\_V\Data\VV051723\  
Data File : VV031074.D  
Acq On : 17 May 2023 15:20  
Operator : SY/MD  
Sample : 02822-05  
Misc : 25.0mL/MSVOA\_V/WATER  
ALS Vial : 13 Sample Multiplier: 1

Instrument :  
MSVOA\_V  
ClientSampleId :  
CONM3

Quant Method : Z:\voasrv\HPCHEM1\MSVOA\_V\Method\SFAMVTR042823WMA.M  
Quant Title : TRACE VOA SFAM1.0

TIC Library : C:\Database\NIST20.L  
TIC Integration Parameters: LSCINT.P



Data Path : Z:\voasrv\HPCHEM1\MSVOA\_V\Data\VW051723\  
 Data File : VW031074.D  
 Acq On : 17 May 2023 15:20  
 Operator : SY/MD  
 Sample : 02822-05  
 Misc : 25.0mL/MSVOA\_V/WATER  
 ALS Vial : 13 Sample Multiplier: 1

Instrument :  
 MSVOA\_V  
 ClientSampleId :  
 CONM3

Quant Method : Z:\voasrv\HPCHEM1\MSVOA\_V\Method\SFAMVTR042823WMA.M  
 Quant Title : TRACE VOA SFAM1.0

TIC Library : C:\Database\NIST0.L  
 TIC Integration Parameters: LSCINT.P

\*\*\*\*\*  
 Peak Number 1 Thiophosgene Concentration Rank 1

R.T.	EstConc	Area	Relative to ISTD	R.T.
6.921	1.44 ug/L	89086	1,4-Difluorobenzene	5.542

Hit# of 5	Tentative ID	MW	MolForm	CAS#	Qual
1	Thiophosgene	114	CC12S	000463-71-8	52
2	2-Propanol, 1,3-dichloro-	128	C3H6Cl2O	000096-23-1	38
3	1,3-Cyclohexadiene	80	C6H8	000592-57-4	37
4	2-Propanol, 1,3-dichloro-	128	C3H6Cl2O	000096-23-1	32
5	1,3-Cyclohexadiene	80	C6H8	000592-57-4	25

\*\*\*\*\*  
 Peak Number 2 Cyclotetrasiloxane, octamet... Concentration Rank 2

R.T.	EstConc	Area	Relative to ISTD	R.T.
10.332	0.92 ug/L	68522	1,4-Dichlorobenzene-d4	11.194

Hit# of 5	Tentative ID	MW	MolForm	CAS#	Qual
1	Cyclotetrasiloxane, octamethyl-	296	C8H24O4Si4	000556-67-2	91
2	2,4-Dihydroxy-3-methylbenzaldehy...	296	C14H24O3Si2	1000514-43-5	72
3	Cyclotetrasiloxane, octamethyl-	296	C8H24O4Si4	000556-67-2	72
4	2,5-Dihydroxyacetophenone, 2TMS ...	296	C14H24O3Si2	1000352-83-7	59
5	Benzoic acid, 4-methyl-2-trimeth...	296	C14H24O3Si2	1000385-69-8	59

Data Path : Z:\voasrv\HPCHEM1\MSVOA\_V\Data\VV051723\  
Data File : VV031074.D  
Acq On : 17 May 2023 15:20  
Operator : SY/MD  
Sample : 02822-05  
Misc : 25.0mL/MSVOA\_V/WATER  
ALS Vial : 13 Sample Multiplier: 1

Instrument :  
MSVOA\_V  
ClientSampleId :  
CONM3

Quant Method : Z:\voasrv\HPCHEM1\MSVOA\_V\Method\SFAMVTR042823WMA.M  
Quant Title : TRACE VOA SFAM1.0

TIC Library : C:\Database\NIST20.L  
TIC Integration Parameters: LSCINT.P

TIC Top Hit name	RT	EstConc	Units	Response	--Internal Standard--			
					#	RT	Resp	Conc
Thiophosgene	6.921	1.4	ug/L	89086	1	5.542	308470	5.0
Cyclotetrasilox...	10.332	0.9	ug/L	68522	3	11.194	372048	5.0