

Data Path : Z:\voasrv\HPCHEM1\MSVOA\_V\Data\VW051923\  
 Data File : VW031112.D  
 Acq On : 19 May 2023 17:22  
 Operator : SY/MD  
 Sample : 02866-06  
 Misc : 5.0mL/MSVOA\_V/WATER  
 ALS Vial : 21 Sample Multiplier: 1

Instrument :  
 MSVOA\_V  
 ClientSampleId :  
 GBX81

Quant Time: May 20 00:35:42 2023  
 Quant Method : Z:\voasrv\HPCHEM1\MSVOA\_V\Method\SFAMVLM051923WMA.M  
 Quant Title : VOC Analysis  
 QLast Update : Sat May 20 00:29:13 2023  
 Response via : Initial Calibration

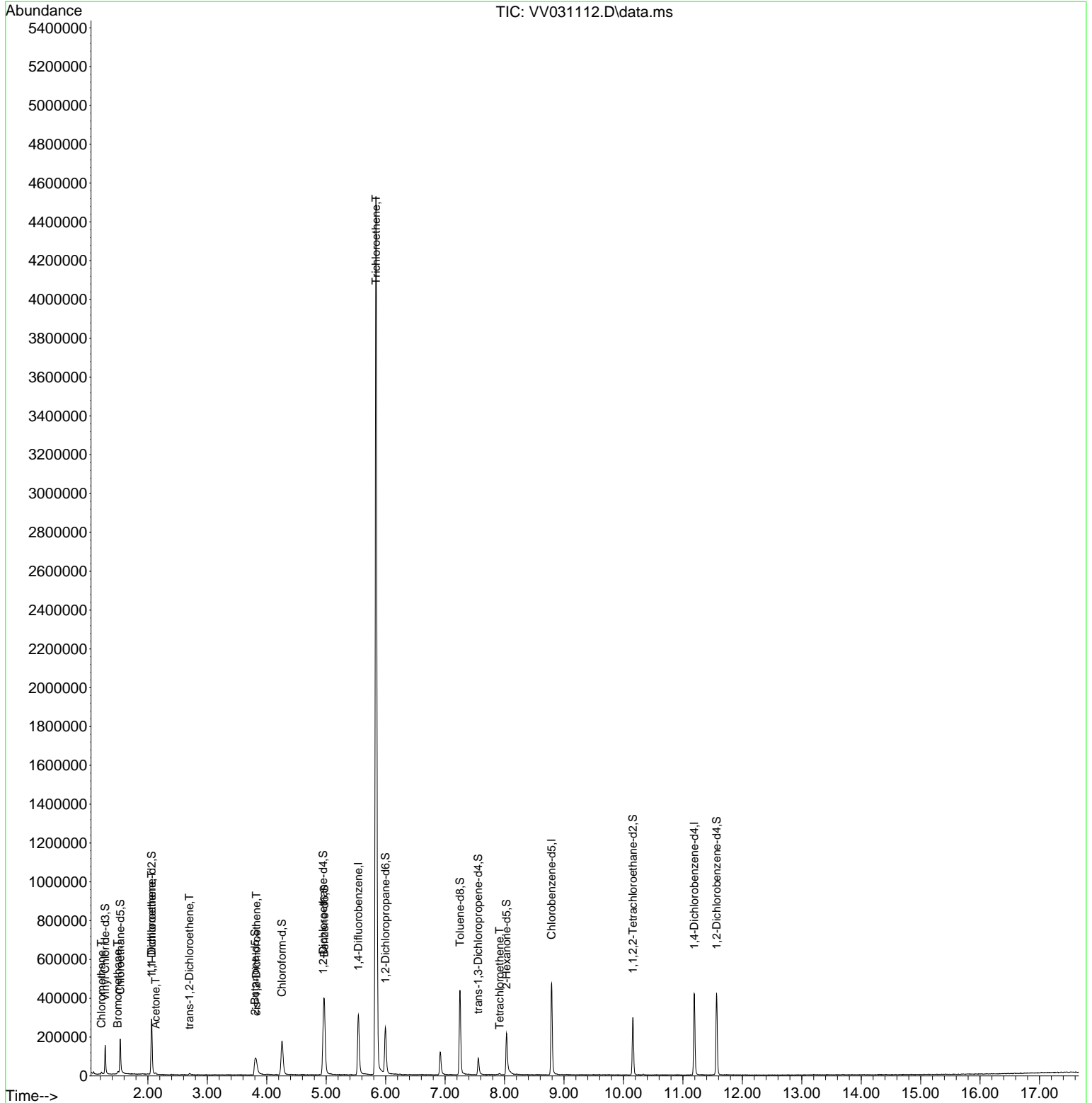
Compound	R.T.	QIon	Response	Conc	Units	Dev(Min)
Internal Standards						
1) 1,4-Difluorobenzene	5.542	114	261319	50.000	ug/L	0.00
28) Chlorobenzene-d5	8.792	117	251552	50.000	ug/L	0.00
58) 1,4-Dichlorobenzene-d4	11.191	152	111540	50.000	ug/L	0.00
System Monitoring Compounds						
4) Vinyl Chloride-d3	1.281	65	98494	44.103	ug/L	0.00
Spiked Amount	50.000	Range 60 - 135	Recovery =	88.200%		
7) Chloroethane-d5	1.535	69	99533	57.853	ug/L	0.00
Spiked Amount	50.000	Range 70 - 130	Recovery =	115.700%		
11) 1,1-Dichloroethene-d2	2.063	65	46526	44.426	ug/L	0.00
Spiked Amount	50.000	Range 60 - 125	Recovery =	88.860%		
21) 2-Butanone-d5	3.802	46	112375	94.433	ug/L	0.00
Spiked Amount	100.000	Range 40 - 130	Recovery =	94.430%		
24) Chloroform-d	4.256	84	177077	44.820	ug/L	0.00
Spiked Amount	50.000	Range 70 - 125	Recovery =	89.640%		
26) 1,2-Dichloroethane-d4	4.950	65	124930	46.795	ug/L	0.00
Spiked Amount	50.000	Range 70 - 125	Recovery =	93.580%		
32) Benzene-d6	4.969	84	322921	47.353	ug/L	0.00
Spiked Amount	50.000	Range 70 - 125	Recovery =	94.700%		
36) 1,2-Dichloropropane-d6	5.995	67	100707	49.356	ug/L	0.00
Spiked Amount	50.000	Range 70 - 120	Recovery =	98.720%		
41) Toluene-d8	7.249	98	285381	44.838	ug/L	0.00
Spiked Amount	50.000	Range 80 - 120	Recovery =	89.680%		
43) trans-1,3-Dichloroprop...	7.558	79	47857	46.749	ug/L	0.00
Spiked Amount	50.000	Range 60 - 125	Recovery =	93.500%		
47) 2-Hexanone-d5	8.034	63	72487	91.115	ug/L	0.00
Spiked Amount	100.000	Range 45 - 130	Recovery =	91.120%		
56) 1,1,2,2-Tetrachloroeth...	10.159	84	126053	41.189	ug/L	0.00
Spiked Amount	50.000	Range 65 - 120	Recovery =	82.380%		
66) 1,2-Dichlorobenzene-d4	11.567	152	106070	52.919	ug/L	0.00
Spiked Amount	50.000	Range 80 - 120	Recovery =	105.840%		
Target Compounds						
3) Chloromethane	1.220	50	8638	4.677	ug/L	91
6) Bromomethane	1.494	94	3765	4.072	ug/L	98
12) 1,1-Dichloroethene	2.066	96	3544	2.441	ug/L #	1
13) Acetone	2.133	43	6278	4.058	ug/L	72
17) trans-1,2-Dichloroethene	2.699	96	2420	1.803	ug/L	89
20) cis-1,2-Dichloroethene	3.825	96	24549	14.838	ug/L	95
34) Trichloroethene	5.837	95	1432125	886.888	ug/L	98
46) Tetrachloroethene	7.918	164	1172	0.845	ug/L #	83

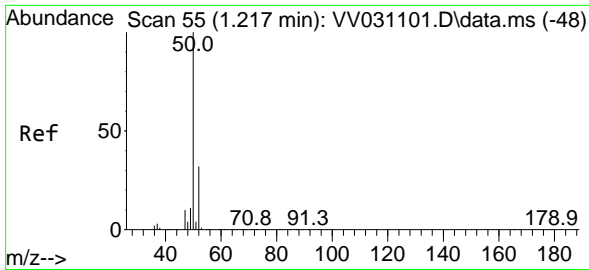
(#) = qualifier out of range (m) = manual integration (+) = signals summed

Data Path : Z:\voasrv\HPCHEM1\MSVOA\_V\Data\VV051923\  
 Data File : VV031112.D  
 Acq On : 19 May 2023 17:22  
 Operator : SY/MD  
 Sample : 02866-06  
 Misc : 5.0mL/MSVOA\_V/WATER  
 ALS Vial : 21 Sample Multiplier: 1

Instrument :  
 MSVOA\_V  
 ClientSampleId :  
 GBX81

Quant Time: May 20 00:35:42 2023  
 Quant Method : Z:\voasrv\HPCHEM1\MSVOA\_V\Method\SFAMVLM051923WMA.M  
 Quant Title : VOC Analysis  
 QLast Update : Sat May 20 00:29:13 2023  
 Response via : Initial Calibration

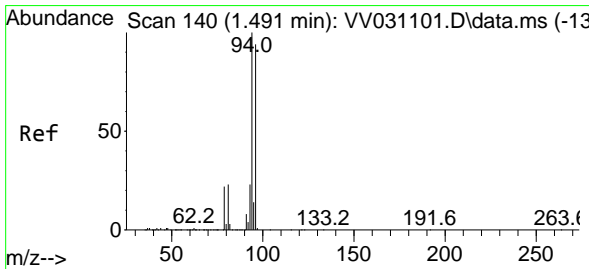
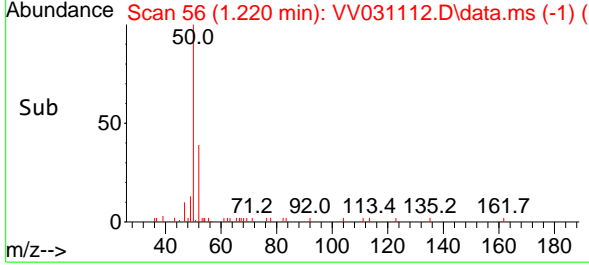
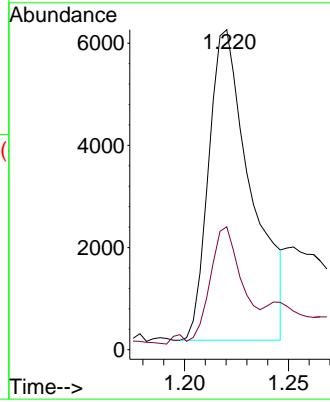
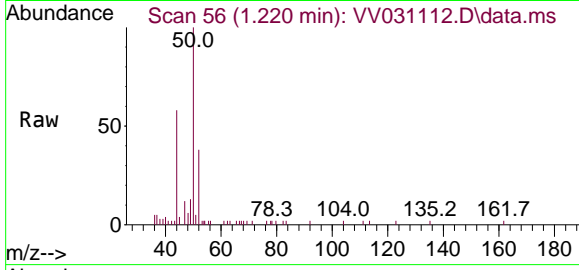




#3  
 Chloromethane  
 Concen: 4.677 ug/L  
 RT: 1.220 min Scan# 50  
 Delta R.T. 0.003 min  
 Lab File: VV031112.D  
 Acq: 19 May 2023 17:22

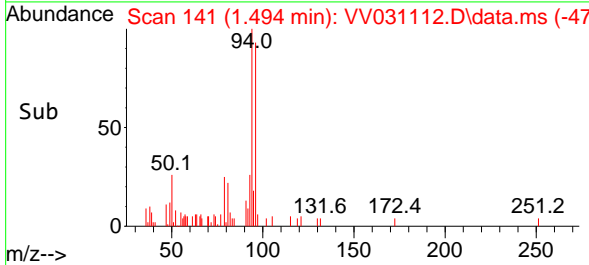
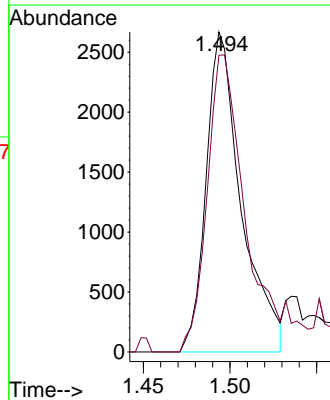
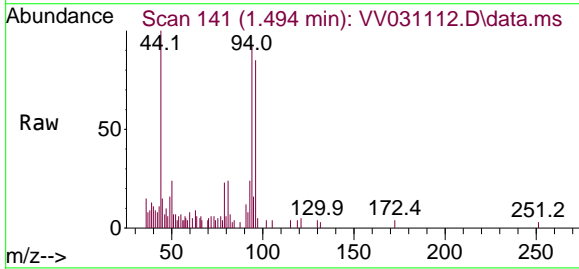
Instrument :  
 MSVOA\_V  
 ClientSampleId :  
 GBX81

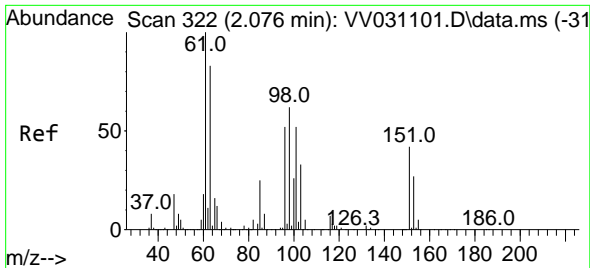
Tgt Ion: 50 Resp: 8638  
 Ion Ratio Lower Upper  
 50 100  
 52 38.4 23.3 43.3



#6  
 Bromomethane  
 Concen: 4.072 ug/L  
 RT: 1.494 min Scan# 141  
 Delta R.T. 0.003 min  
 Lab File: VV031112.D  
 Acq: 19 May 2023 17:22

Tgt Ion: 94 Resp: 3765  
 Ion Ratio Lower Upper  
 94 100  
 96 92.8 63.9 118.7

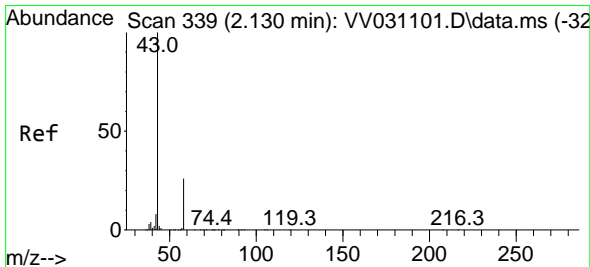
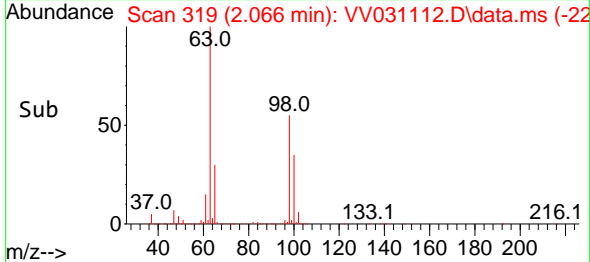
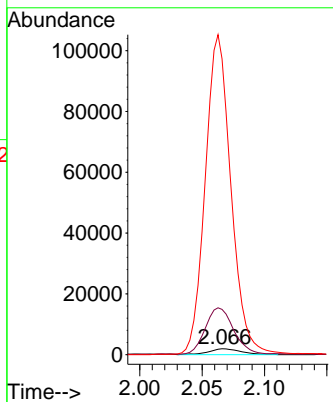
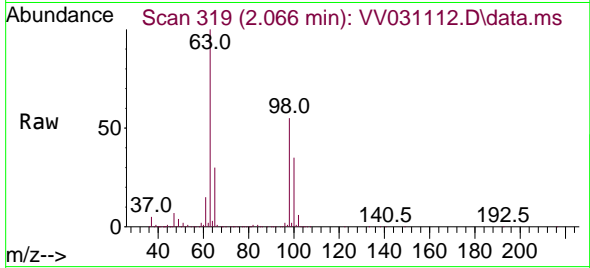




#12  
 1,1-Dichloroethene  
 Concen: 2.441 ug/L  
 RT: 2.066 min Scan# 31  
 Delta R.T. -0.010 min  
 Lab File: VV031112.D  
 Acq: 19 May 2023 17:22

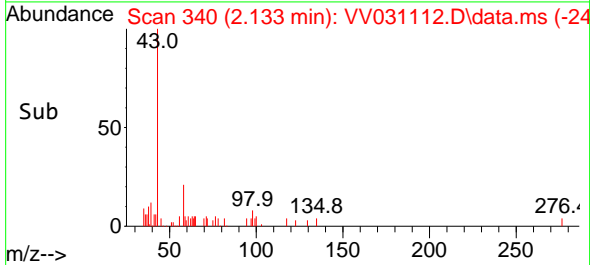
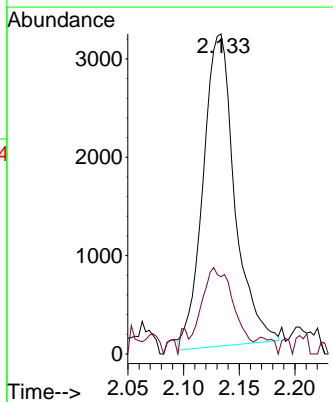
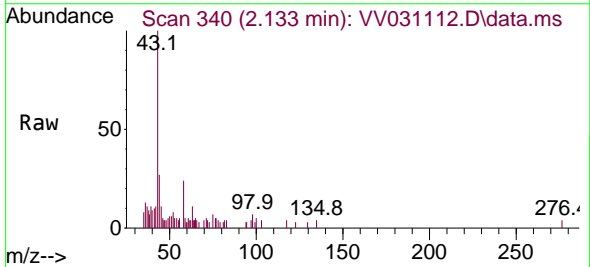
Instrument :  
 MSVOA\_V  
 ClientSampleId :  
 GBX81

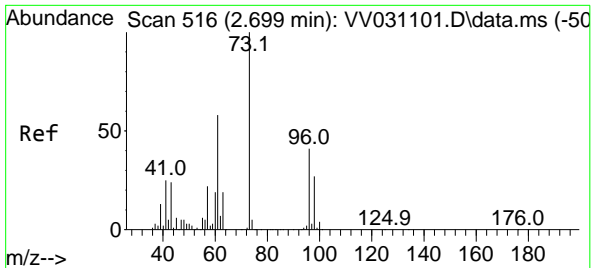
Tgt Ion: 96 Resp: 3544  
 Ion Ratio Lower Upper  
 96 100  
 61 755.6 137.9 256.1#  
 63 4935.1 114.2 212.0#



#13  
 Acetone  
 Concen: 4.058 ug/L  
 RT: 2.133 min Scan# 340  
 Delta R.T. 0.003 min  
 Lab File: VV031112.D  
 Acq: 19 May 2023 17:22

Tgt Ion: 43 Resp: 6278  
 Ion Ratio Lower Upper  
 43 100  
 58 12.7 0.0 54.0



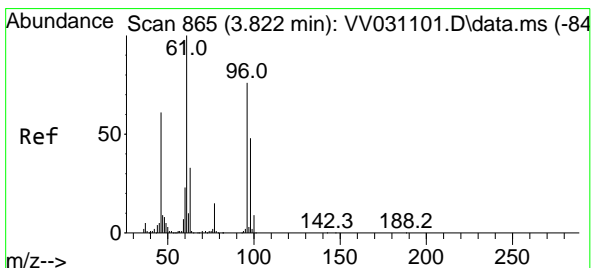
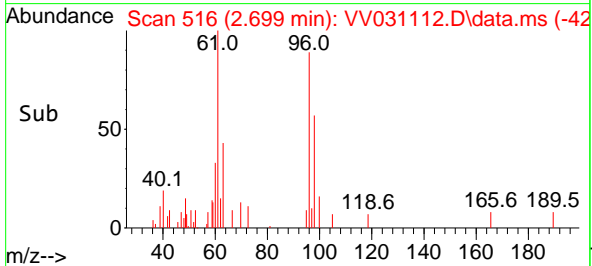
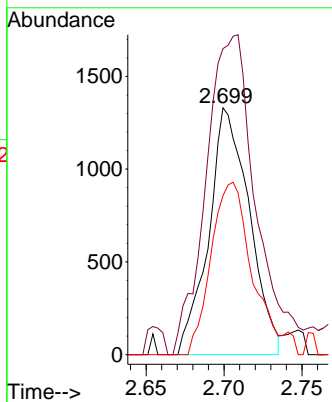
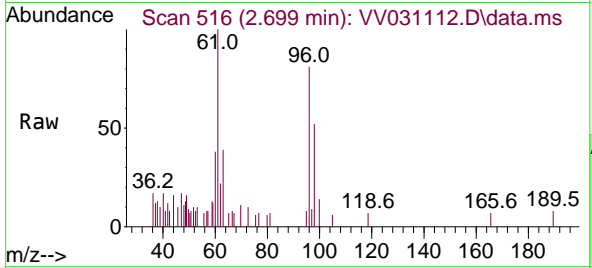


#17  
 trans-1,2-Dichloroethene  
 Concen: 1.803 ug/L  
 RT: 2.699 min Scan# 517  
 Delta R.T. -0.000 min  
 Lab File: VV031112.D  
 Acq: 19 May 2023 17:22

Instrument : MSVOA\_V  
 ClientSampleId : GBX81

Tgt Ion: 96 Resp: 2420

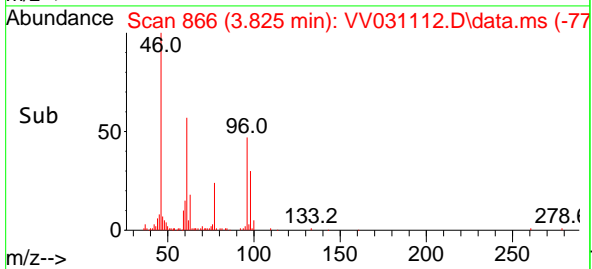
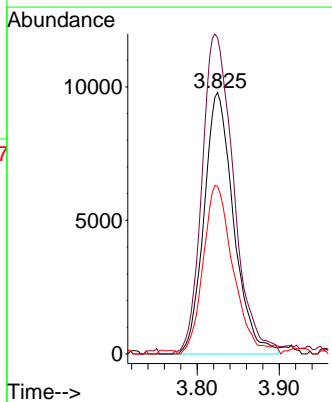
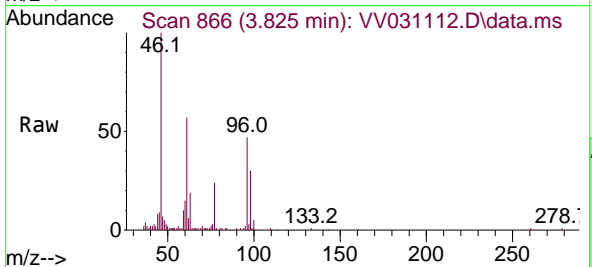
Ion	Ratio	Lower	Upper
96	100		
61	124.0	100.0	185.6
98	64.4	45.4	84.2

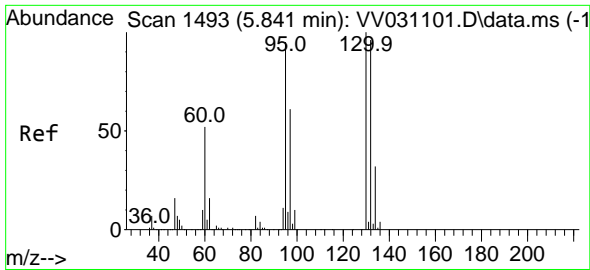


#20  
 cis-1,2-Dichloroethene  
 Concen: 14.838 ug/L  
 RT: 3.825 min Scan# 866  
 Delta R.T. 0.003 min  
 Lab File: VV031112.D  
 Acq: 19 May 2023 17:22

Tgt Ion: 96 Resp: 24549

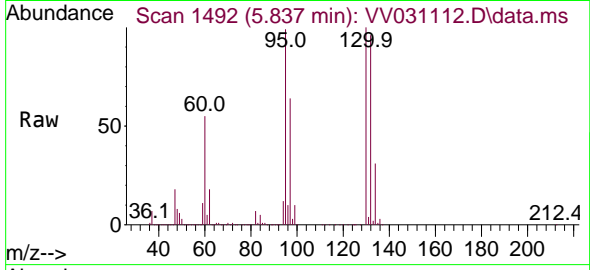
Ion	Ratio	Lower	Upper
96	100		
61	121.0	89.2	165.6
98	64.2	43.0	80.0





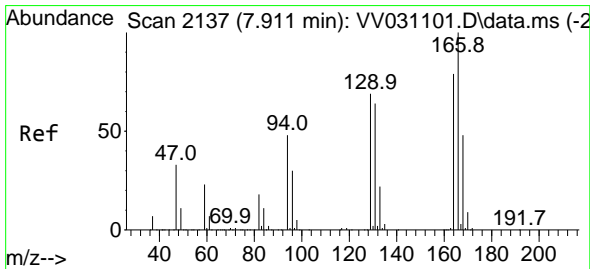
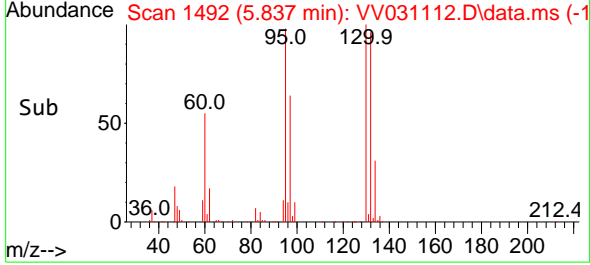
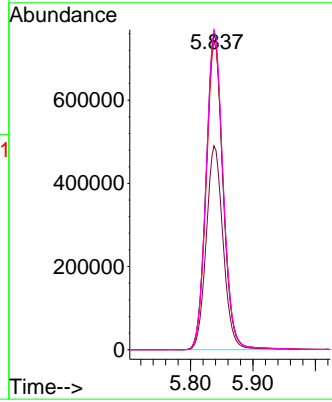
#34  
 Trichloroethene  
 Concen: 886.888 ug/L  
 RT: 5.837 min Scan# 1492  
 Delta R.T. -0.003 min  
 Lab File: VV031112.D  
 Acq: 19 May 2023 17:22

Instrument : MSVOA\_V  
 ClientSampleId : GBX81



Tgt Ion: 95 Resp: 1432125

Ion	Ratio	Lower	Upper
95	100		
97	64.5	44.4	82.5
132	97.3	70.2	130.4
130	101.2	71.5	132.7



#46  
 Tetrachloroethene  
 Concen: 0.845 ug/L  
 RT: 7.918 min Scan# 2139  
 Delta R.T. 0.006 min  
 Lab File: VV031112.D  
 Acq: 19 May 2023 17:22

Tgt Ion: 164 Resp: 1172

Ion	Ratio	Lower	Upper
164	100		
129	78.4	65.5	121.7
131	116.6	62.1	115.3
166	144.0	93.4	173.4

