

Data Path : Z:\voasrv\HPCHEM1\MSVOA_V\Data\VW051923\
 Data File : VW031136.D
 Acq On : 20 May 2023 03:55
 Operator : SY/MD
 Sample : 02865-10
 Misc : 5.0mL/MSVOA_V/WATER
 ALS Vial : 47 Sample Multiplier: 1

Instrument :
 MSVOA_V
 ClientSampleId :
 GBX65

Integration Parameters: LSCINT.P

Integrator: RTE
 Smoothing : OFF Filtering: 5
 Sampling : 1 Min Area: 0 % of largest Peak
 Start Thrs: 0.2 Max Peaks: 100
 Stop Thrs : 0 Peak Location: TOP

If leading or trailing edge < 100 prefer < Baseline drop else tangent >
 Peak separation: 5

Method : Z:\voasrv\HPCHEM1\MSVOA_V\Method\SFAMVLM051923WMA.M
 Title : VOC Analysis

Signal : TIC: VW031136.D\data.ms

peak #	R.T. min	first scan	max scan	last scan	PK TY	peak height	corr. area	corr. % max.	% of total
1	1.281	69	75	91	rVB	135989	154183	15.27%	1.949%
2	1.532	147	153	167	rVB	112319	137933	13.66%	1.743%
3	2.063	309	318	327	rBV	254876	370507	36.69%	4.683%
4	2.117	328	335	353	rVB	154597	246817	24.44%	3.119%
5	2.423	425	430	433	rVB7	1822	1663	0.16%	0.021%
6	2.442	433	436	440	rBV6	2027	2258	0.22%	0.029%
7	2.513	456	458	460	rBV3	1269	544	0.05%	0.007%
8	2.574	470	477	488	rVB3	5650	11640	1.15%	0.147%
9	3.037	618	621	623	rBV3	1842	1210	0.12%	0.015%
10	3.082	632	635	638	rBV5	1270	852	0.08%	0.011%
11	3.121	645	647	651	rBV5	1302	768	0.08%	0.010%
12	3.156	656	658	661	rVV4	1380	805	0.08%	0.010%
13	3.172	661	663	668	rVB5	1412	1169	0.12%	0.015%
14	3.272	691	694	696	rVV3	1295	625	0.06%	0.008%
15	3.285	696	698	701	rVB4	1497	833	0.08%	0.011%
16	3.346	713	717	718	rBV3	1439	843	0.08%	0.011%
17	3.458	750	752	755	rBV4	1476	718	0.07%	0.009%
18	3.654	810	813	815	rBV4	1363	699	0.07%	0.009%
19	3.793	847	856	879	rBV	77689	214018	21.20%	2.705%
20	4.256	987	1000	1023	rBV	163279	417102	41.31%	5.271%
21	4.658	1122	1125	1127	rBV4	1310	947	0.09%	0.012%
22	4.709	1138	1141	1142	rBV3	1402	827	0.08%	0.010%
23	4.963	1202	1220	1249	rBV2	371380	1009736	100.00%	12.761%
24	5.542	1388	1400	1420	rBV	285922	597837	59.21%	7.556%
25	5.995	1529	1541	1561	rBV	220668	455403	45.10%	5.755%
26	6.349	1649	1651	1654	rBV3	2265	1424	0.14%	0.018%
27	6.648	1742	1744	1748	rVB4	3431	1605	0.16%	0.020%
28	6.674	1748	1752	1756	rBV6	1795	2054	0.20%	0.026%
29	6.866	1811	1812	1813	rBV	975	263	0.03%	0.003%
30	6.918	1819	1828	1849	rBV	106528	198349	19.64%	2.507%
31	7.172	1905	1907	1909	rBV2	2711	1794	0.18%	0.023%
32	7.249	1921	1931	1947	rBV	406156	712189	70.53%	9.001%
33	7.558	2019	2027	2041	rBV	74865	130851	12.96%	1.654%
34	8.034	2165	2175	2189	rBV	247157	466862	46.24%	5.900%
35	8.619	2355	2357	2360	rBV4	1768	953	0.09%	0.012%
36	8.792	2400	2411	2434	rBV	445737	740329	73.32%	9.356%

Data Path : Z:\voasrv\HPCHEM1\MSVOA_V\Data\VW051923\
 Data File : VW031136.D
 Acq On : 20 May 2023 03:55
 Operator : SY/MD
 Sample : 02865-10
 Misc : 5.0mL/MSVOA_V/WATER
 ALS Vial : 47 Sample Multiplier: 1

Instrument :
 MSVOA_V
 ClientSampleId :
 GBX65

Integration Parameters: LSCINT.P

Integrator: RTE
 Smoothing : OFF
 Sampling : 1
 Start Thrs: 0.2
 Stop Thrs : 0

Filtering: 5
 Min Area: 0 % of largest Peak
 Max Peaks: 100
 Peak Location: TOP

If leading or trailing edge < 100 prefer < Baseline drop else tangent >
 Peak separation: 5

Method : Z:\voasrv\HPCHEM1\MSVOA_V\Method\SFAMVLM051923WMA.M
 Title : VOC Analysis

37	9.159	2522	2525	2528	rBV4	2287	1834	0.18%	0.023%
38	9.416	2600	2605	2606	rBV5	1467	1266	0.13%	0.016%
39	9.654	2672	2679	2688	rBV	20621	31388	3.11%	0.397%
40	10.159	2824	2836	2853	rBV	320044	511331	50.64%	6.462%
41	10.587	2966	2969	2973	rBV5	1820	1254	0.12%	0.016%
42	11.149	3142	3144	3146	rBV3	1949	1319	0.13%	0.017%
43	11.191	3147	3157	3176	rVV	429151	672394	66.59%	8.498%
44	11.500	3245	3253	3262	rBV3	24091	44466	4.40%	0.562%
45	11.567	3264	3274	3290	rVB	430037	684206	67.76%	8.647%
46	12.050	3422	3424	3426	rBV3	1735	890	0.09%	0.011%
47	12.191	3458	3468	3474	rBV5	8877	16526	1.64%	0.209%
48	12.381	3523	3527	3530	rVB5	1665	1363	0.13%	0.017%
49	12.413	3530	3537	3538	rBV7	1631	1600	0.16%	0.020%
50	12.490	3559	3561	3563	rBV2	843	379	0.04%	0.005%
51	12.529	3571	3573	3575	rBV3	1064	487	0.05%	0.006%
52	12.564	3580	3584	3586	rBV4	1603	1098	0.11%	0.014%
53	12.606	3592	3597	3600	rBV7	2370	1934	0.19%	0.024%
54	12.628	3600	3604	3611	rVV8	2563	3166	0.31%	0.040%
55	12.715	3628	3631	3633	rBV4	1103	643	0.06%	0.008%
56	12.725	3633	3634	3635	rVB	1035	199	0.02%	0.003%
57	12.734	3635	3637	3639	rBV3	1049	613	0.06%	0.008%
58	12.844	3669	3671	3676	rBV6	1378	1346	0.13%	0.017%
59	12.914	3690	3693	3700	rVB9	2676	2044	0.20%	0.026%
60	12.943	3700	3702	3704	rVB3	855	364	0.04%	0.005%
61	12.959	3704	3707	3712	rVB6	2183	2075	0.21%	0.026%
62	12.995	3712	3718	3719	rBV6	1240	968	0.10%	0.012%
63	13.030	3725	3729	3730	rVB4	946	541	0.05%	0.007%
64	13.059	3736	3738	3740	rBV3	751	376	0.04%	0.005%
65	13.107	3750	3753	3757	rBV5	1542	991	0.10%	0.013%
66	13.162	3763	3770	3771	rBV6	1281	1052	0.10%	0.013%
67	13.236	3791	3793	3797	rBV6	1044	826	0.08%	0.010%
68	13.294	3808	3811	3815	rVB6	1571	1385	0.14%	0.018%
69	13.316	3815	3818	3822	rBV5	1001	913	0.09%	0.012%
70	13.374	3833	3836	3839	rBV4	1261	1174	0.12%	0.015%
71	13.509	3875	3878	3881	rBV5	2660	1452	0.14%	0.018%
72	13.525	3881	3883	3887	rVB4	2003	1158	0.11%	0.015%
73	13.551	3887	3891	3894	rBV5	1285	1301	0.13%	0.016%
74	13.635	3914	3917	3924	rBV9	2158	1928	0.19%	0.024%
75	13.667	3924	3927	3929	rBV4	1516	830	0.08%	0.010%
76	13.686	3929	3933	3938	rVV8	1571	1602	0.16%	0.020%

Data Path : Z:\voasrv\HPCHEM1\MSVOA_V\Data\VV051923\
 Data File : VV031136.D
 Acq On : 20 May 2023 03:55
 Operator : SY/MD
 Sample : 02865-10
 Misc : 5.0mL/MSVOA_V/WATER
 ALS Vial : 47 Sample Multiplier: 1

Instrument :
 MSVOA_V
 ClientSampleId :
 GBX65

Integration Parameters: LSCINT.P

Integrator: RTE
 Smoothing : OFF
 Sampling : 1
 Start Thrs : 0.2
 Stop Thrs : 0

Filtering: 5
 Min Area: 0 % of largest Peak
 Max Peaks: 100
 Peak Location: TOP

If leading or trailing edge < 100 prefer < Baseline drop else tangent >
 Peak separation: 5

Method : Z:\voasrv\HPCHEM1\MSVOA_V\Method\SFAMVLM051923WMA.M
 Title : VOC Analysis

77	13.725	3942	3945	3947	rVB4	1778	975	0.10%	0.012%
78	13.760	3947	3956	3958	rBV8	1521	2206	0.22%	0.028%
79	13.857	3984	3986	3988	rBV3	701	333	0.03%	0.004%
80	13.876	3990	3992	3993	rVB2	1364	387	0.04%	0.005%
81	13.889	3993	3996	3998	rBV4	1407	1023	0.10%	0.013%
82	13.927	4004	4008	4010	rVB5	1324	980	0.10%	0.012%
83	13.940	4010	4012	4013	rBV2	1330	678	0.07%	0.009%
84	13.985	4022	4026	4031	rBV8	1173	1299	0.13%	0.016%
85	14.030	4038	4040	4043	rBV4	987	641	0.06%	0.008%
86	14.046	4043	4045	4048	rVB4	885	502	0.05%	0.006%
87	14.059	4048	4049	4051	rBV2	861	331	0.03%	0.004%
88	14.098	4058	4061	4063	rBV4	1142	731	0.07%	0.009%
89	14.123	4067	4069	4072	rBV3	1988	1287	0.13%	0.016%
90	14.139	4072	4074	4078	rVV4	1572	899	0.09%	0.011%
91	14.156	4078	4079	4083	rVB4	1378	643	0.06%	0.008%
92	14.172	4083	4084	4086	rBV2	1021	465	0.05%	0.006%
93	14.201	4089	4093	4096	rBV5	2152	1448	0.14%	0.018%
94	14.230	4098	4102	4108	rBV7	2837	3349	0.33%	0.042%
95	14.268	4111	4114	4118	rBV6	1945	1665	0.16%	0.021%
96	14.384	4147	4150	4154	rBV6	1779	1490	0.15%	0.019%
97	14.484	4180	4181	4186	rBV5	1457	1097	0.11%	0.014%
98	14.570	4206	4208	4209	rBV2	872	463	0.05%	0.006%
99	14.599	4212	4217	4220	rVV6	1592	1692	0.17%	0.021%
100	14.664	4235	4237	4238	rBV2	1581	637	0.06%	0.008%

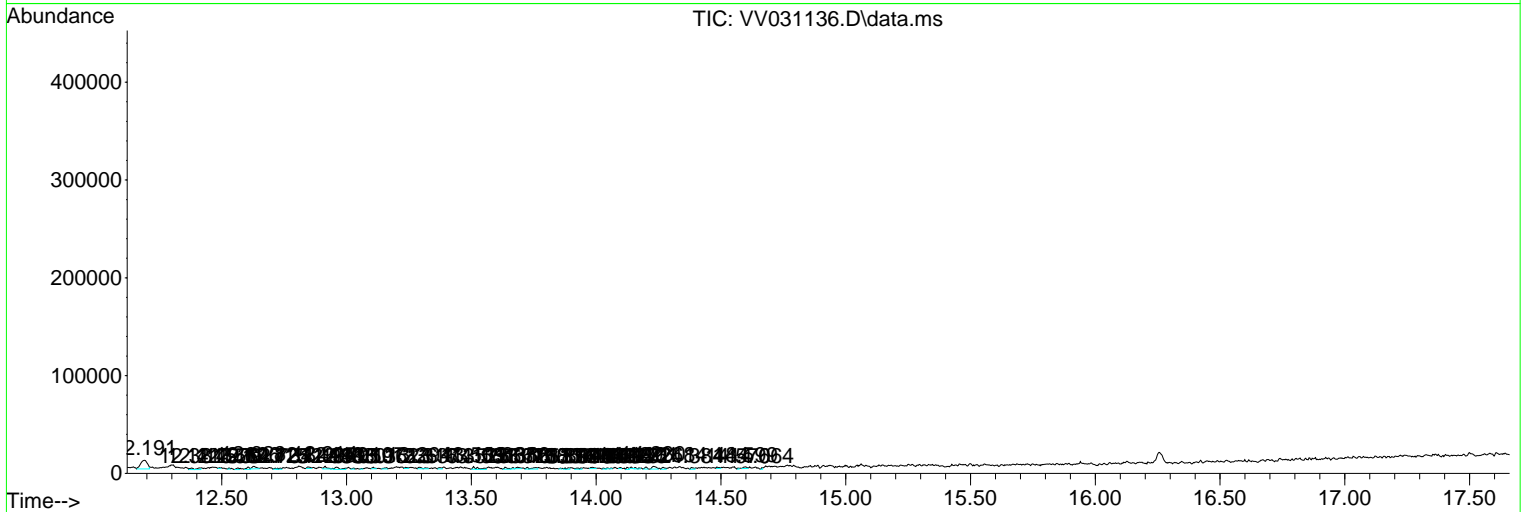
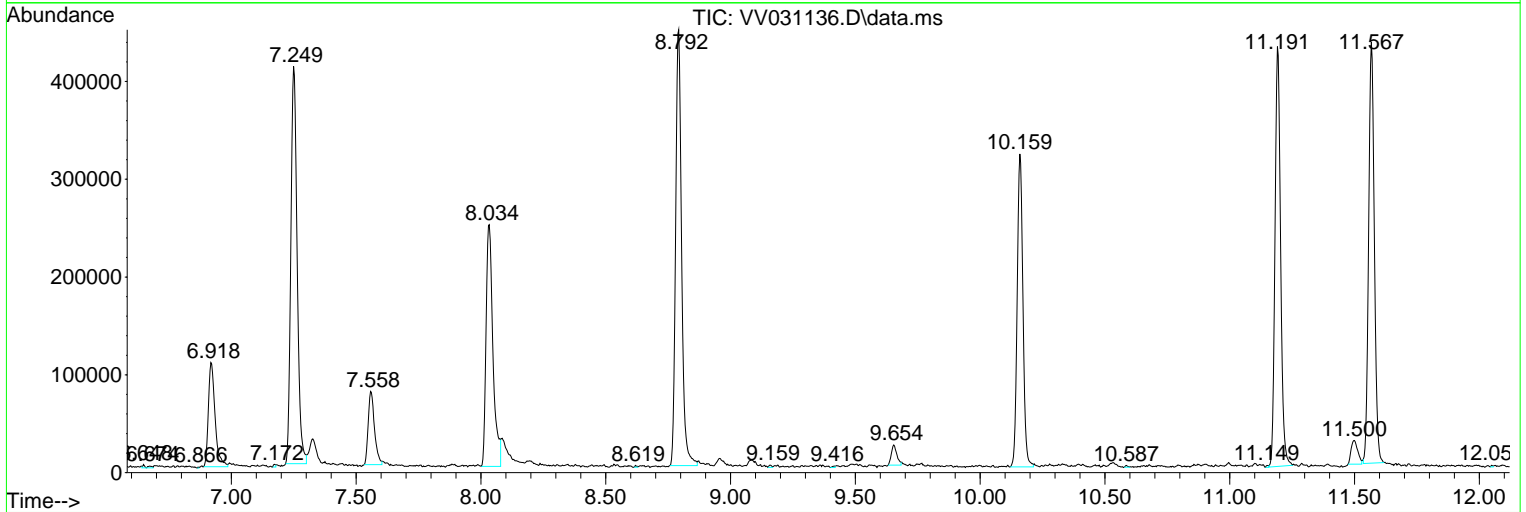
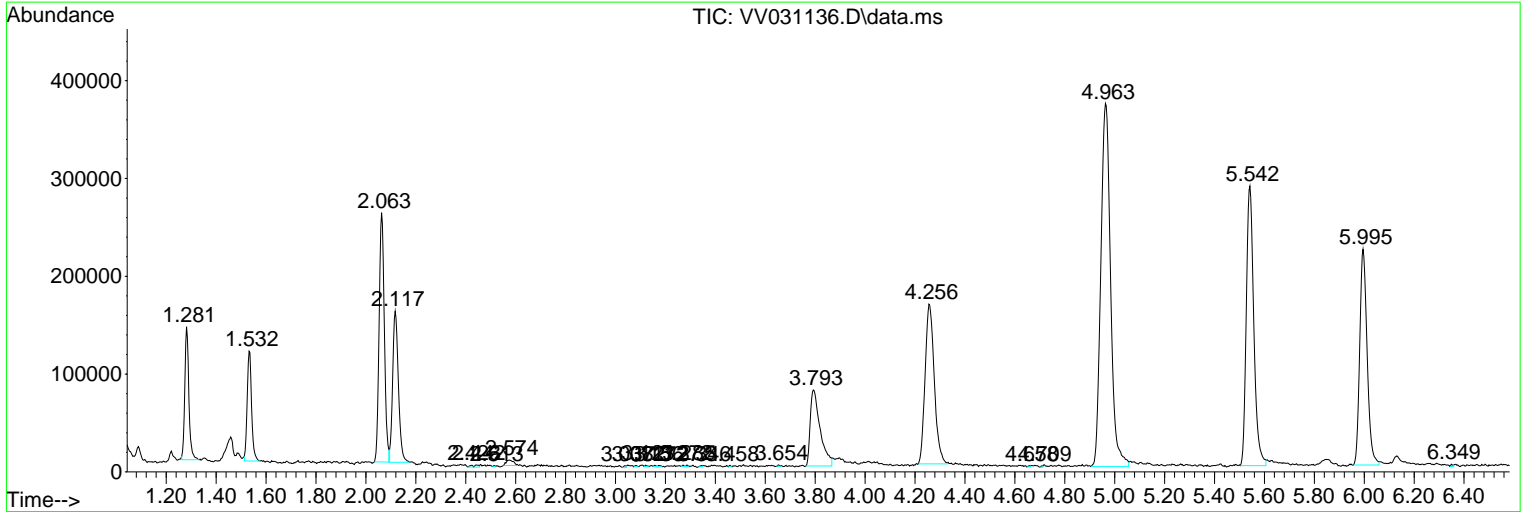
Sum of corrected areas: 7912513

Data Path : Z:\voasrv\HPCHEM1\MSVOA_V\Data\VV051923\
 Data File : VV031136.D
 Acq On : 20 May 2023 03:55
 Operator : SY/MD
 Sample : 02865-10
 Misc : 5.0mL/MSVOA_V/WATER
 ALS Vial : 47 Sample Multiplier: 1

Instrument :
 MSVOA_V
 ClientSampleId :
 GBX65

Quant Method : Z:\voasrv\HPCHEM1\MSVOA_V\Method\SFAMVLM051923WMA.M
 Quant Title : VOC Analysis

TIC Library : C:\Database\NIST20.L
 TIC Integration Parameters: LSCINT.P



Data Path : Z:\voasrv\HPCHEM1\MSVOA_V\Data\VV051923\
 Data File : VV031136.D
 Acq On : 20 May 2023 03:55
 Operator : SY/MD
 Sample : 02865-10
 Misc : 5.0mL/MSVOA_V/WATER
 ALS Vial : 47 Sample Multiplier: 1

Instrument :
 MSVOA_V
 ClientSampleId :
 GBX65

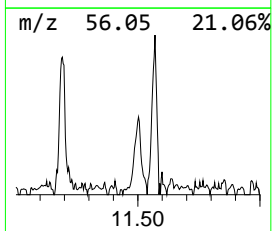
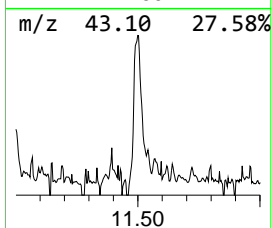
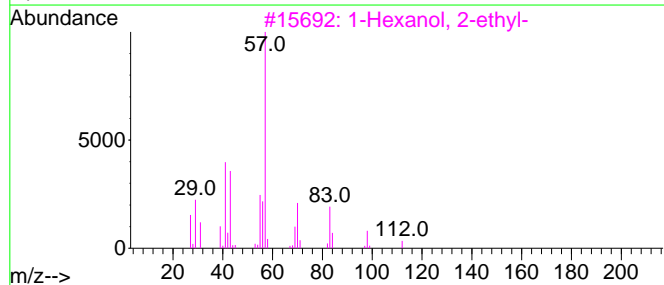
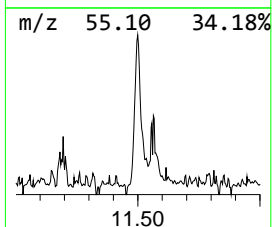
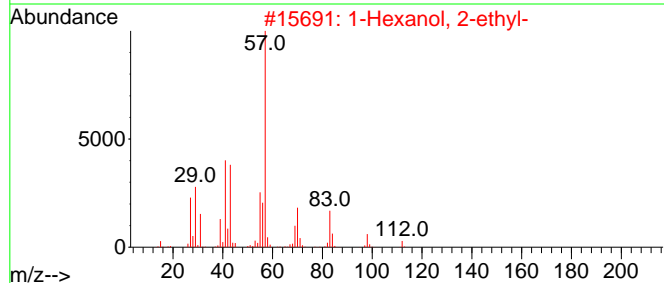
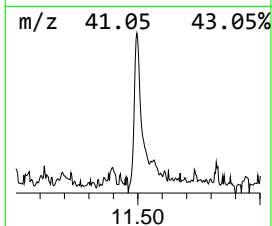
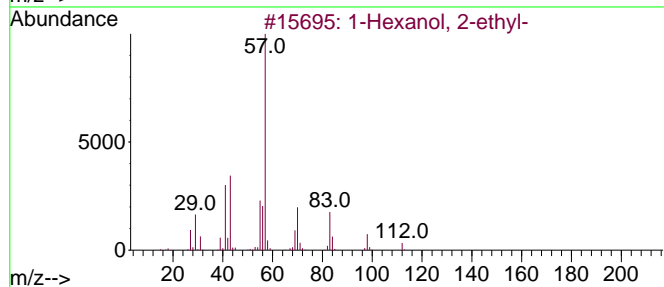
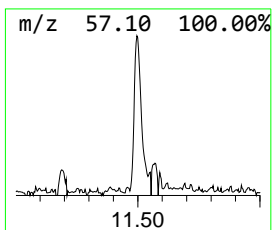
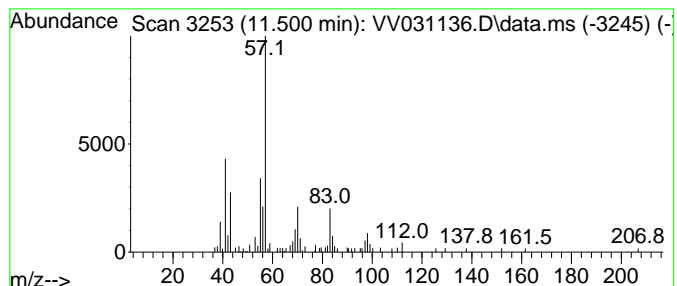
Quant Method : Z:\voasrv\HPCHEM1\MSVOA_V\Method\SFAMVLM051923WMA.M
 Quant Title : VOC Analysis

TIC Library : C:\Database\NIST20.L
 TIC Integration Parameters: LSCINT.P

 Peak Number 2 1-Hexanol, 2-ethyl- Concentration Rank 2

R.T.	EstConc	Area	Relative to ISTD	R.T.
11.500	3.31 ug/L	44466	1,4-Dichlorobenzene-d4	11.191

Hit#	of	5	Tentative ID	MW	MolForm	CAS#	Qual
1	1-Hexanol, 2-ethyl-	130	C8H18O	000104-76-7	72		
2	1-Hexanol, 2-ethyl-	130	C8H18O	000104-76-7	72		
3	1-Hexanol, 2-ethyl-	130	C8H18O	000104-76-7	64		
4	1-Pentanol, 2-ethyl-4-methyl-	130	C8H18O	000106-67-2	50		
5	Carbonic acid, isobutyl octadecy...	370	C23H46O3	1000314-61-5	50		



Data Path : Z:\voasrv\HPCHEM1\MSVOA_V\Data\VV051923\
Data File : VV031136.D
Acq On : 20 May 2023 03:55
Operator : SY/MD
Sample : 02865-10
Misc : 5.0mL/MSVOA_V/WATER
ALS Vial : 47 Sample Multiplier: 1

Instrument :
MSVOA_V
ClientSampleId :
GBX65

Quant Method : Z:\voasrv\HPCHEM1\MSVOA_V\Method\SFAMVLM051923WMA.M
Quant Title : VOC Analysis

TIC Library : C:\Database\NIST20.L
TIC Integration Parameters: LSCINT.P

TIC Top Hit name	RT	EstConc	Units	Response	--Internal Standard--			
					#	RT	Resp	Conc
1-Hexanol, 2-et...	11.500	3.3	ug/L	44466	3	11.191	672394	50.0