

Data Path : Z:\VOASRV\HPCHEM1\MSVOA V\DATA\VV052120\
 Data File : VV016151.D
 Acq On : 21 May 2020 14:19
 Operator : SY/MD
 Sample : L2725-12
 Misc : 25.0mL/MSVOA V/WATER
 ALS Vial : 9 Sample Multiplier: 1

Instrument :
 MSVOA_V
 ClientSampled :

Quant Time: May 22 01:54:47 2020
 Quant Method : Z:\VOASRV\HPCHEM1\MSVOA_V\METHOD\SOMVTR050720WMA.M
 Quant Title : TRACE VOA SOM01.0
 QLast Update : Fri May 22 01:50:48 2020
 Response via : Initial Calibration

Internal Standards	R.T.	QIon	Response	Conc	Units	Dev(Min)
1) 1,4-Difluorobenzene	5.64	114	138528	5.00	ug/L	0.00
28) Chlorobenzene-d5	8.87	117	132448	5.00	ug/L	0.00
61) 1,4-Dichlorobenzene-d4	11.27	152	66854	5.00	ug/L	0.00

System Monitoring Compounds

4) Vinyl Chloride-d3	1.31	65	29520	3.93	ug/L	0.00
Spiked Amount	5.000	Range	40 - 130	Recovery	=	78.60%
7) Chloroethane-d5	1.58	69	34832	4.89	ug/L	0.00
Spiked Amount	5.000	Range	65 - 130	Recovery	=	97.80%
11) 1,1-Dichloroethene-d2	2.12	63	54799	3.39	ug/L	0.00
Spiked Amount	5.000	Range	60 - 125	Recovery	=	67.80%
20) 2-Butanone-d5	3.96	46	77089	35.96	ug/L	0.01
Spiked Amount	50.000	Range	40 - 130	Recovery	=	71.92%
24) Chloroform-d	4.38	84	85054	5.18	ug/L	0.00
Spiked Amount	5.000	Range	70 - 125	Recovery	=	103.60%
26) 1,2-Dichloroethane-d4	5.06	65	42690	4.53	ug/L	0.00
Spiked Amount	5.000	Range	70 - 130	Recovery	=	90.60%
32) Benzene-d6	5.08	84	154975	4.92	ug/L	0.00
Spiked Amount	5.000	Range	70 - 125	Recovery	=	98.40%
36) 1,2-Dichloropropane-d6	6.10	67	50820	5.28	ug/L	0.00
Spiked Amount	5.000	Range	60 - 140	Recovery	=	105.60%
41) Toluene-d8	7.34	98	136806	4.59	ug/L	0.00
Spiked Amount	5.000	Range	70 - 130	Recovery	=	91.80%
45) trans-1,3-Dichloropropene-	7.65	79	14255	3.78	ug/L	0.00
Spiked Amount	5.000	Range	55 - 130	Recovery	=	75.60%
48) 2-Hexanone-d5	8.12	63	74433	44.88	ug/L	0.00
Spiked Amount	50.000	Range	45 - 130	Recovery	=	89.76%
59) 1,1,2,2-Tetrachloroethane-	10.24	84	31939	4.72	ug/L	0.00
Spiked Amount	5.000	Range	65 - 120	Recovery	=	94.40%
65) 1,2-Dichlorobenzene-d4	11.65	152	55328	5.10	ug/L	0.00
Spiked Amount	5.000	Range	80 - 120	Recovery	=	102.00%

Target Compounds

Target Compounds	R.T.	QIon	Response	Conc	Units	Ovalue
3) Chloromethane	1.45	50	16686	1.553	ug/L #	50
5) Vinyl chloride	1.32	62	9465	0.921	ug/L	88
8) Chloroethane	1.44	64	717310	97.966	ug/L #	50
13) Acetone	2.24	43	1573	1.112	ug/L	68
18) trans-1,2-Dichloroethene	2.78	96	2299	0.273	ug/L	86
22) cis-1,2-Dichloroethene	3.95	96	9923	1.125	ug/L	92
27) 1,2-Dichloroethane	5.14	62	653	0.059	ug/L #	76
33) Benzene	5.13	78	51102	1.534	ug/L	100
35) Methylcyclohexane	6.10	83	12122	0.843	ug/L #	16
37) 1,2-Dichloropropane	6.10	63	6384	0.754	ug/L #	87
42) Toluene	7.41	91	166971	4.727	ug/L	97
43) 1,3,5-Trimethylbenzene	10.56	105	8197	0.253	ug/L #	100
44) 1,2,4-Trimethylbenzene	10.94	105	19512	0.602	ug/L #	100
46) trans-1,3-Dichloropropene	7.65	75	700	0.069	ug/L #	76
47) 1,1,2-Trichloroethane	7.73	97	864	0.153	ug/L #	16
50) 2-Hexanone	8.12	43	11338	3.038	ug/L #	72
53) Chlorobenzene	8.90	112	2428	0.107	ug/L #	83

Data Path : Z:\VOASRV\HPCHEM1\MSVOA V\DATA\VV052120\
 Data File : VV016151.D
 Acq On : 21 May 2020 14:19
 Operator : SY/MD
 Sample : L2725-12
 Misc : 25.0mL/MSVOA V/WATER
 ALS Vial : 9 Sample Multiplier: 1

Instrument :
 MSVOA_V
 ClientSampleId :

Quant Time: May 22 01:54:47 2020
 Quant Method : Z:\VOASRV\HPCHEM1\MSVOA_V\METHOD\SOMVTR050720WMA.M
 Quant Title : TRACE VOA SOM01.0
 QLast Update : Fri May 22 01:50:48 2020
 Response via : Initial Calibration

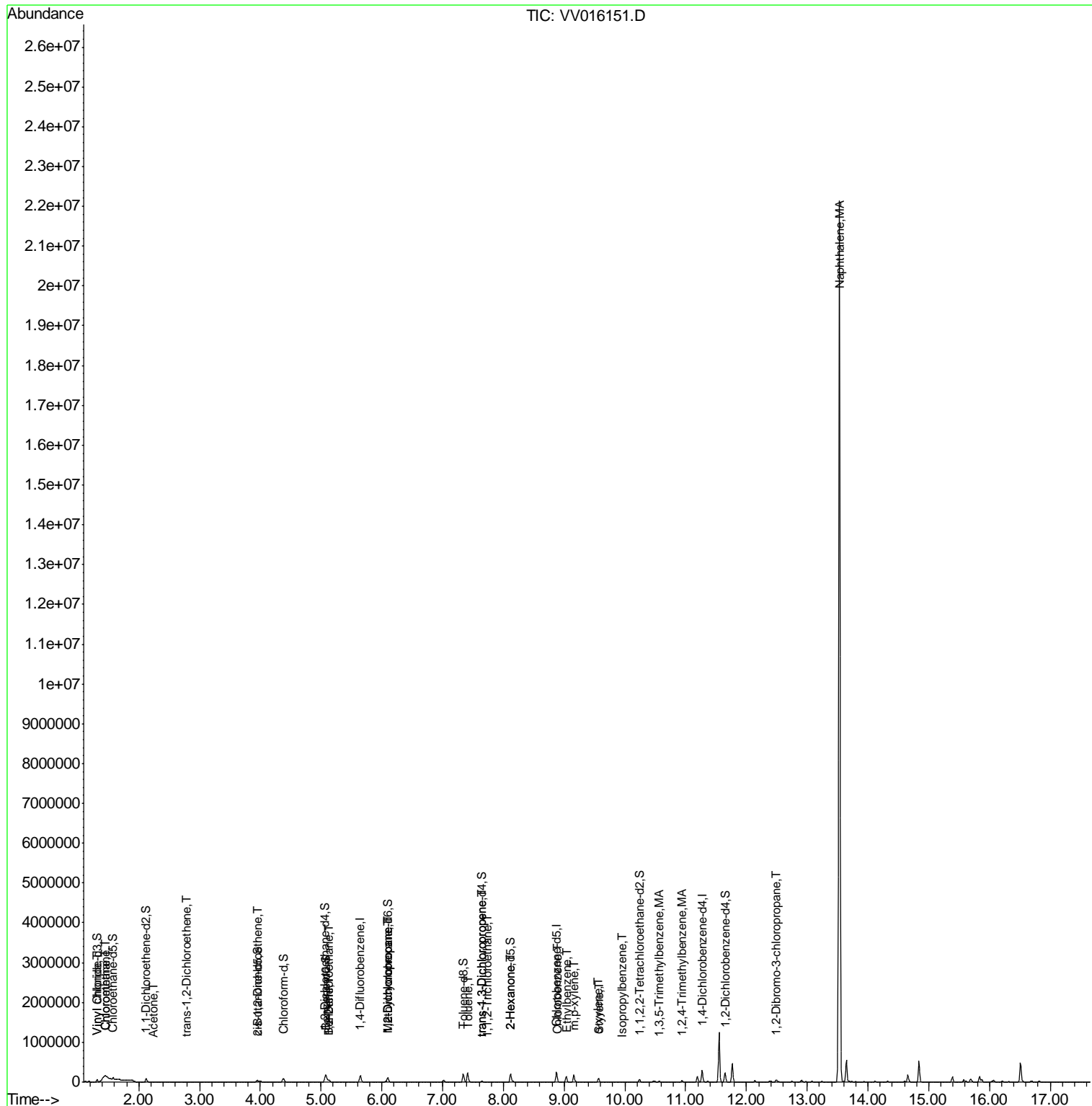
Internal Standards	R.T.	QIon	Response	Conc	Units	Dev(Min)
54) Ethylbenzene	9.04	91	91234	2.272	ug/L	99
55) m,p-xylene	9.16	106	48670	3.273	ug/L	99
56) o-xylene	9.57	106	23516	1.654	ug/L	100
57) Styrene	9.58	104	3474	0.146	ug/L #	24
58) Isopropylbenzene	9.95	105	2800	0.072	ug/L #	93
67) 1,2-Dibromo-3-chloropropan	12.49	75	1352	1.271	ug/L #	6
70) Naphthalene	13.53	128	15301545	850.237	ug/L #	93

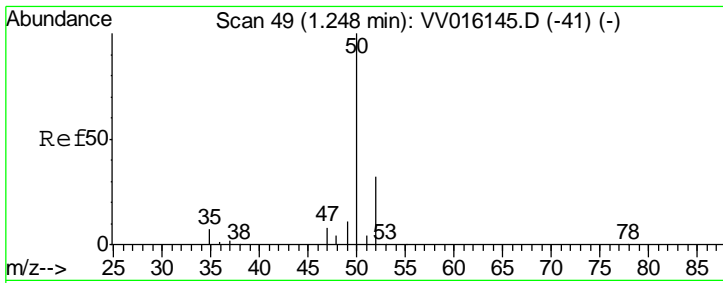
(#) = qualifier out of range (m) = manual integration (+) = signals summed

Data Path : Z:\VOASRV\HPCHEM1\MSVOA V\DATA\VV052120\
 Data File : VV016151.D
 Acq On : 21 May 2020 14:19
 Operator : SY/MD
 Sample : L2725-12
 Misc : 25.0mL/MSVOA V/WATER
 ALS Vial : 9 Sample Multiplier: 1

Instrument :
 MSVOA_V
 ClientSampled :

Quant Time: May 22 01:54:47 2020
 Quant Method : Z:\VOASRV\HPCHEM1\MSVOA_V\METHOD\SOMVTR050720WMA.M
 Quant Title : TRACE VOA SOM01.0
 QLast Update : Fri May 22 01:50:48 2020
 Response via : Initial Calibration

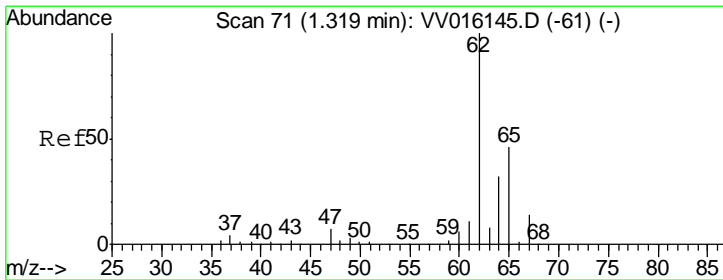
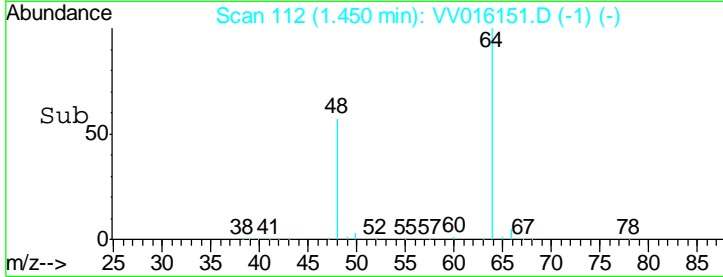
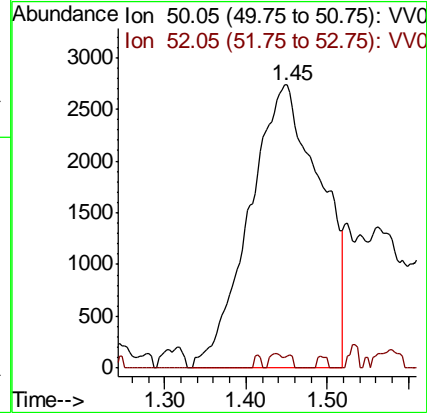
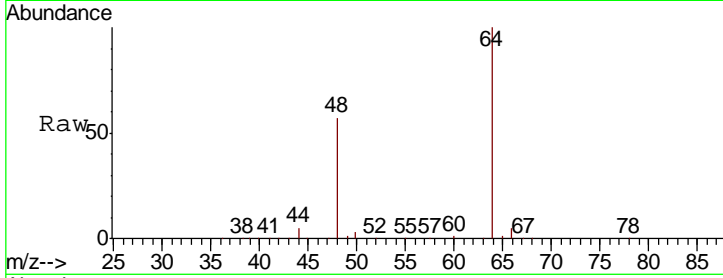




#3
 Chloromethane
 Concen: 1.553 ug/L
 RT: 1.45 min Scan# 112
 Delta R.T. 0.20 min
 Lab File: VV016151.D
 Acq: 21 May 2020 14:19

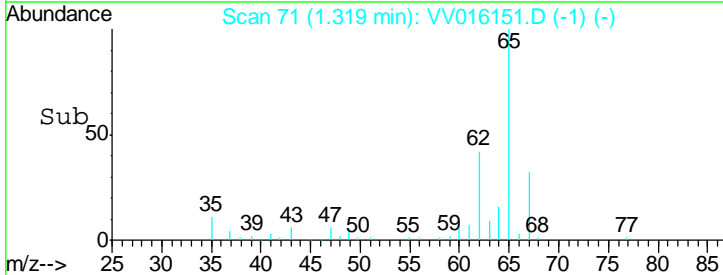
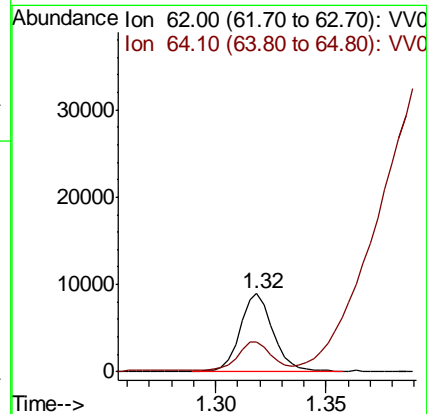
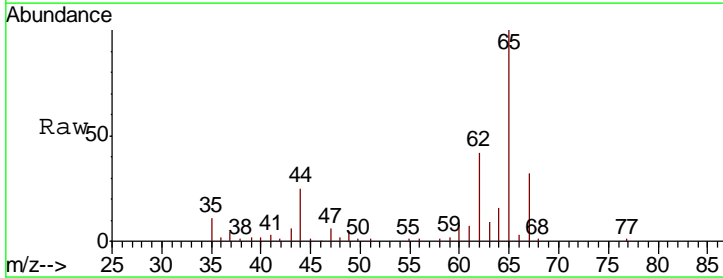
Instrument :
 MSVOA_V
 ClientSampled :

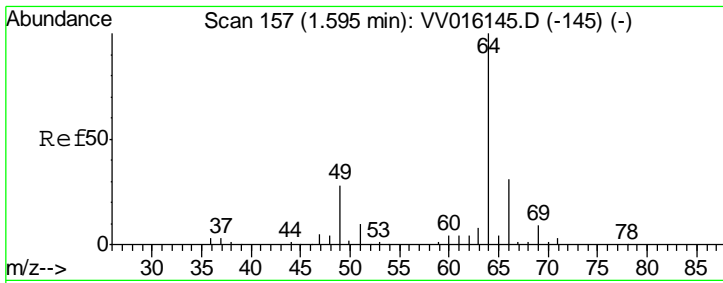
Tgt Ion	Resp	Lower	Upper
50	16686		
52	4.5	22.8	42.4#



#5
 Vinyl chloride
 Concen: 0.921 ug/L
 RT: 1.32 min Scan# 71
 Delta R.T. 0.00 min
 Lab File: VV016151.D
 Acq: 21 May 2020 14:19

Tgt Ion	Resp	Lower	Upper
62	9465		
64	38.5	22.4	41.6

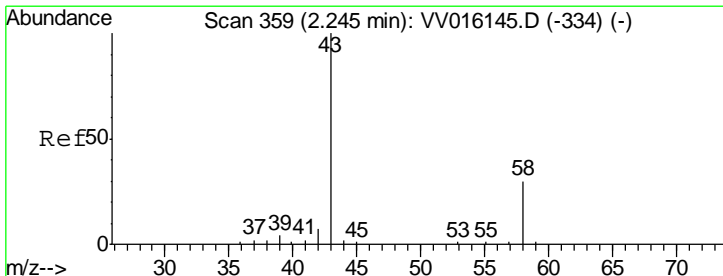
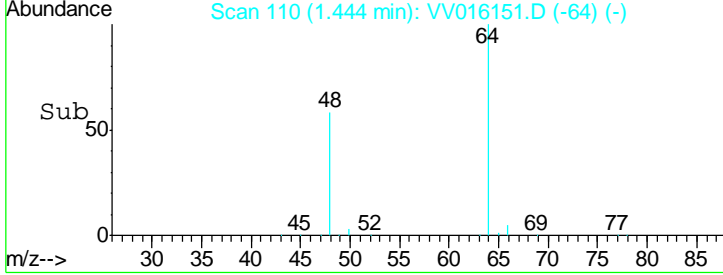
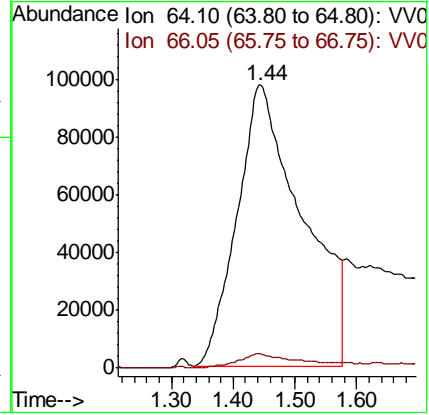
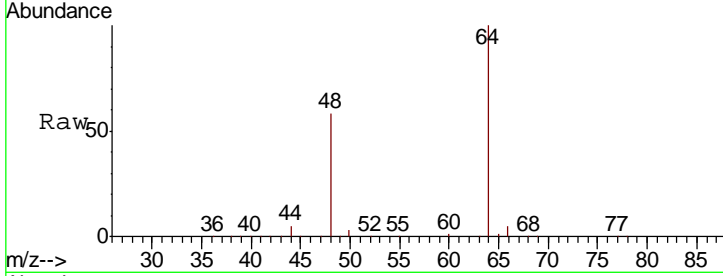




#8
 Chloroethane
 Concen: 97.966 ug/L
 RT: 1.44 min Scan# 110
 Delta R.T. -0.15 min
 Lab File: VV016151.D
 Acq: 21 May 2020 14:19

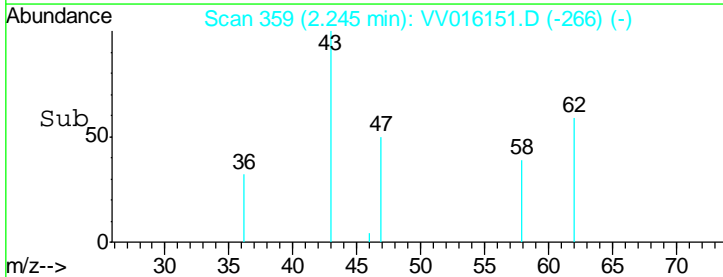
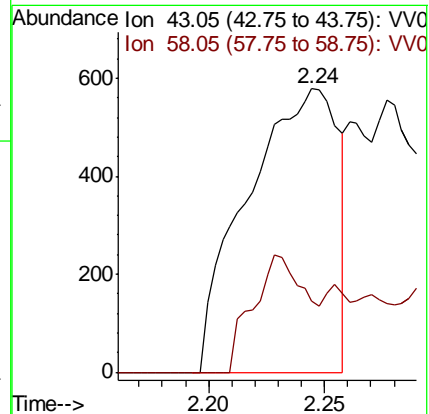
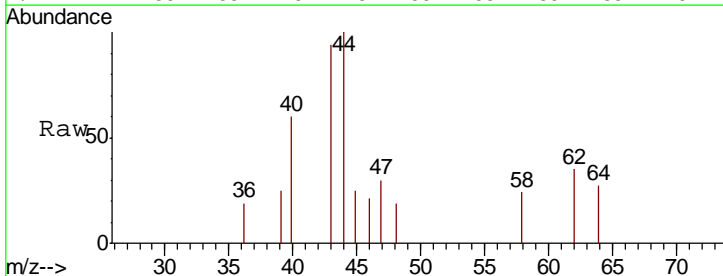
Instrument :
 MSVOA_V
 ClientSampled :

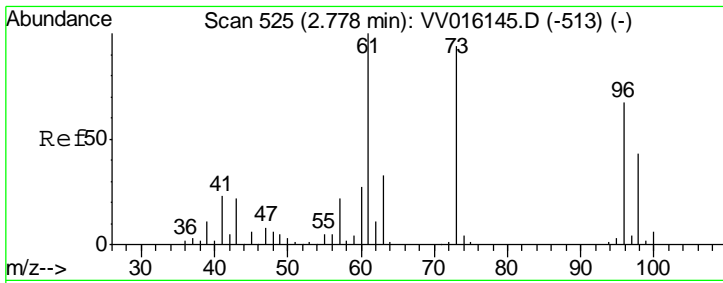
Tgt Ion	Resp	Lower	Upper
64	100		
66	5.1	23.6	43.8#



#13
 Acetone
 Concen: 1.112 ug/L
 RT: 2.24 min Scan# 359
 Delta R.T. 0.00 min
 Lab File: VV016151.D
 Acq: 21 May 2020 14:19

Tgt Ion	Resp	Lower	Upper
43	100		
58	1.9	0.0	30.8

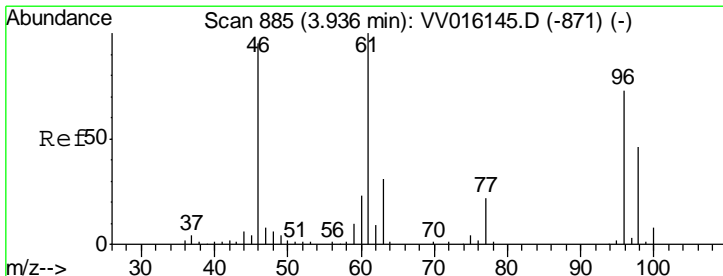
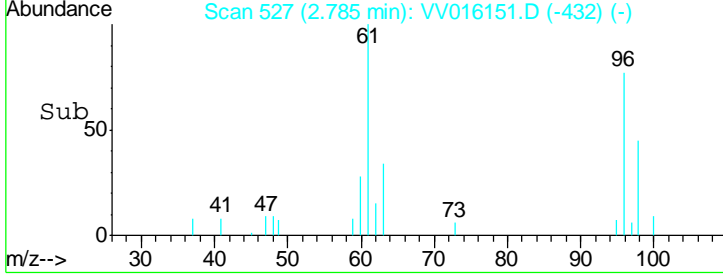
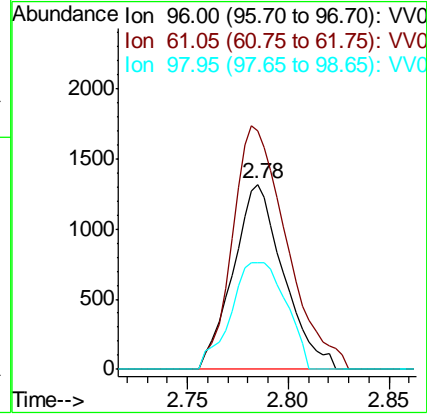
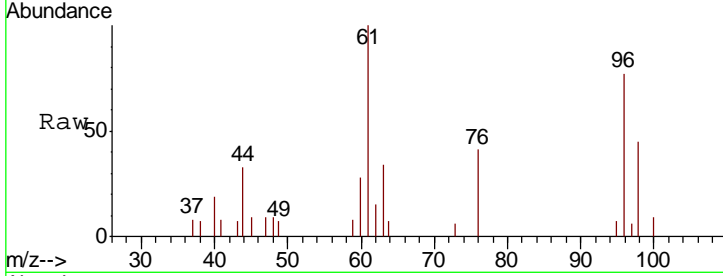




#18
 trans-1,2-Dichloroethene
 Concen: 0.273 ug/L
 RT: 2.78 min Scan# 527
 Delta R.T. 0.01 min
 Lab File: VV016151.D
 Acq: 21 May 2020 14:19

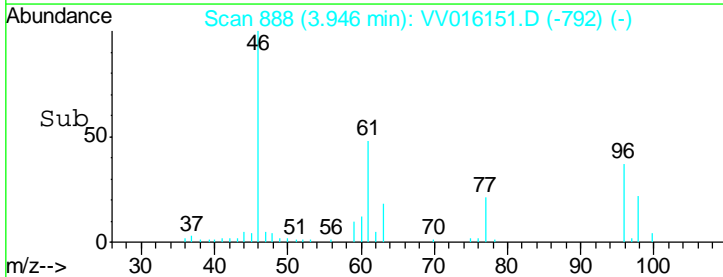
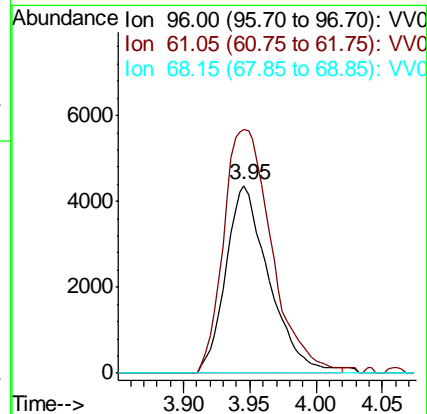
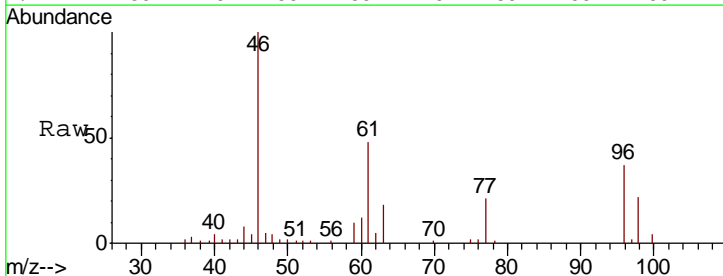
Instrument : MSVOA_V
 ClientSampled :

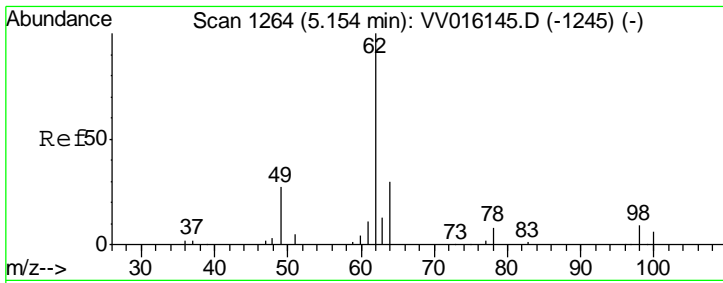
Tgt Ion	Resp	Lower	Upper
96	2299		
Ion Ratio			
96	100		
61	129.2	105.3	195.5
98	57.8	44.0	81.6



#22
 cis-1,2-Dichloroethene
 Concen: 1.125 ug/L
 RT: 3.95 min Scan# 888
 Delta R.T. 0.01 min
 Lab File: VV016151.D
 Acq: 21 May 2020 14:19

Tgt Ion	Resp	Lower	Upper
96	9923		
Ion Ratio			
96	100		
61	129.8	97.2	180.6
68	0.0	0.0	0.0

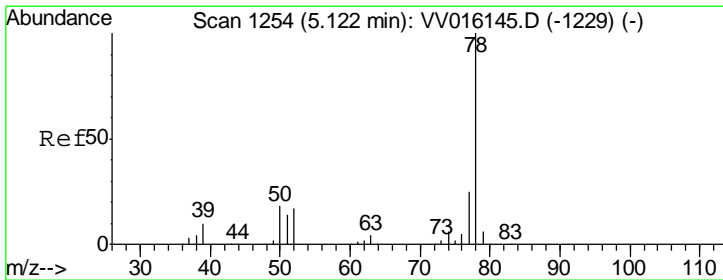
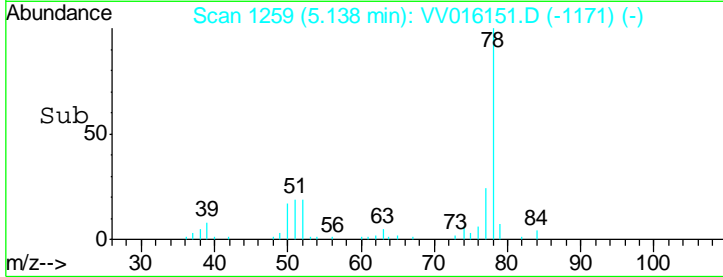
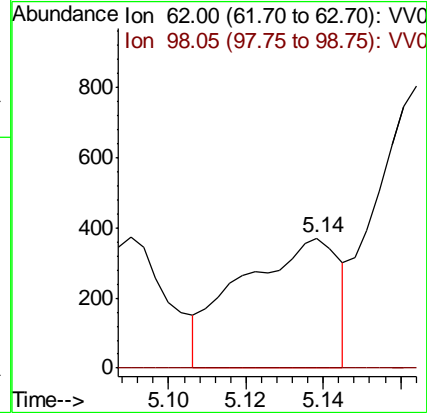
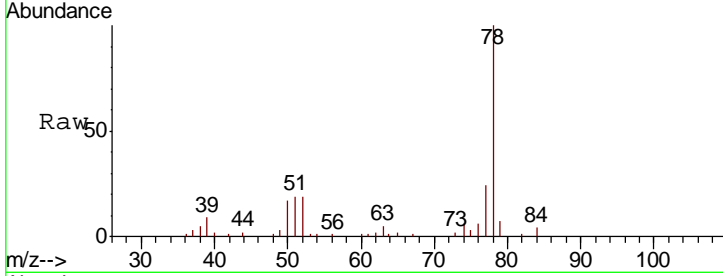




#27
 1,2-Dichloroethane
 Concen: 0.059 ug/L
 RT: 5.14 min Scan# 1259
 Delta R.T. -0.02 min
 Lab File: VV016151.D
 Acq: 21 May 2020 14:19

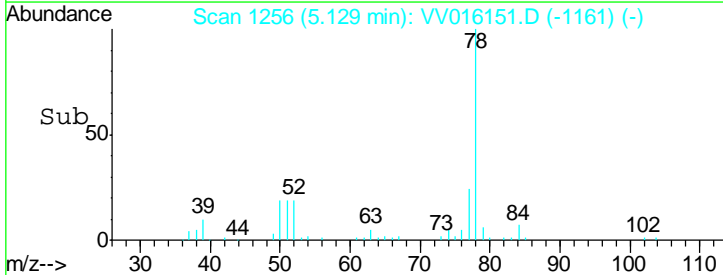
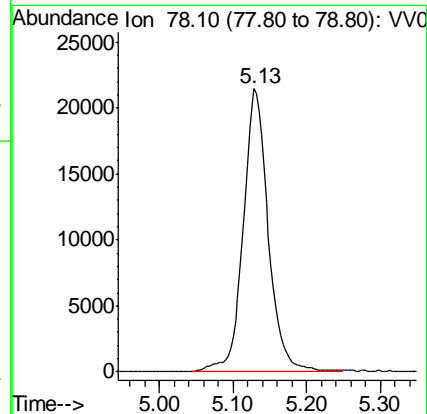
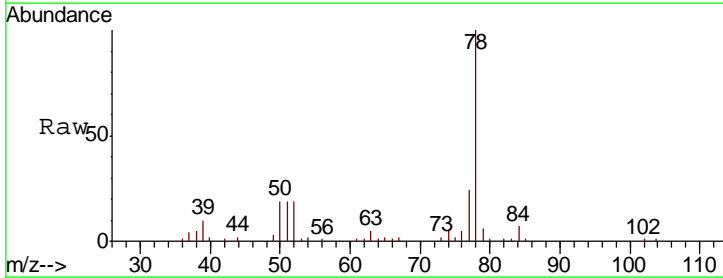
Instrument :
 MSVOA_V
 ClientSampled :

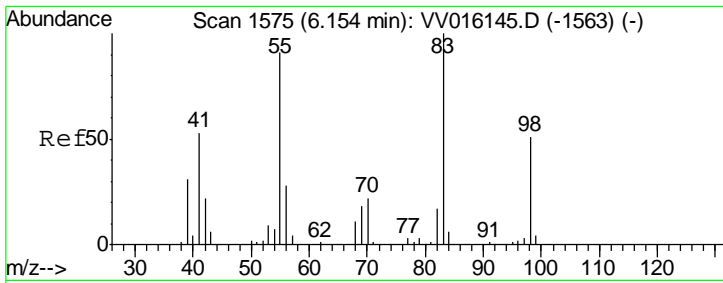
Tgt Ion	Resp	Lower	Upper
62	100		
98	0.0	6.7	10.1#



#33
 Benzene
 Concen: 1.534 ug/L
 RT: 5.13 min Scan# 1256
 Delta R.T. 0.01 min
 Lab File: VV016151.D
 Acq: 21 May 2020 14:19

Tgt Ion: 78 Resp: 51102

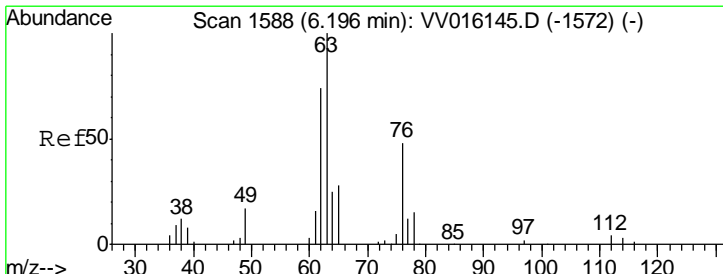
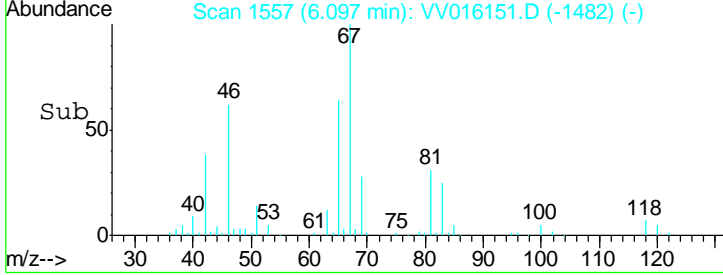
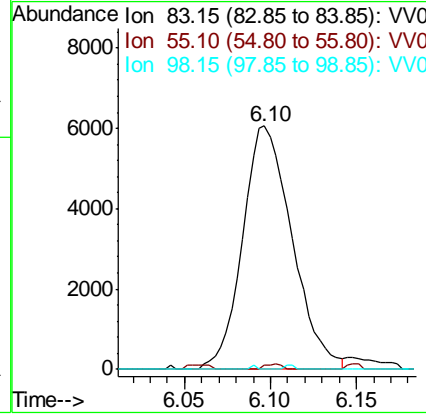
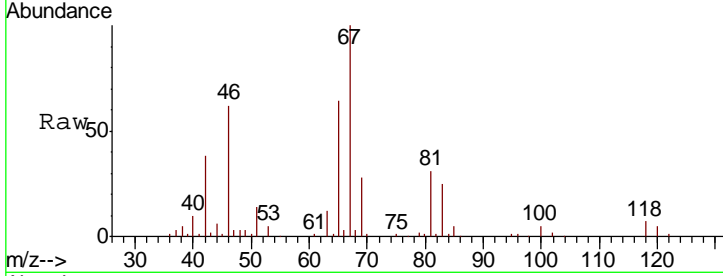




#35
 Methylcyclohexane
 Concen: 0.843 ug/L
 RT: 6.10 min Scan# 1557
 Delta R.T. -0.06 min
 Lab File: VV016151.D
 Acq: 21 May 2020 14:19

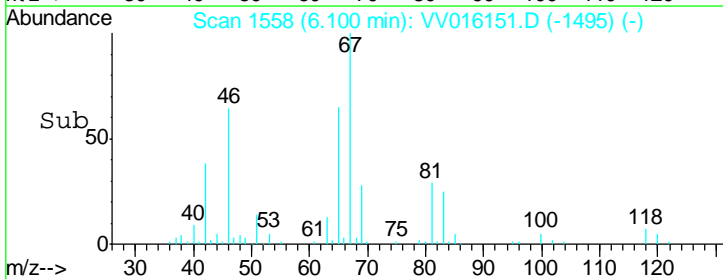
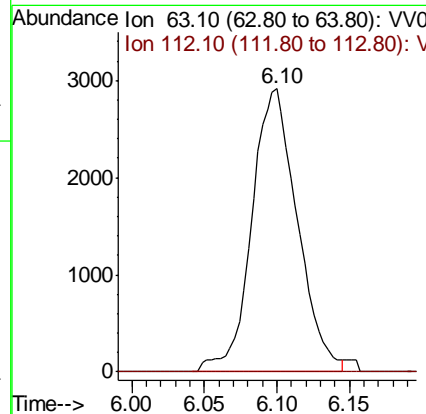
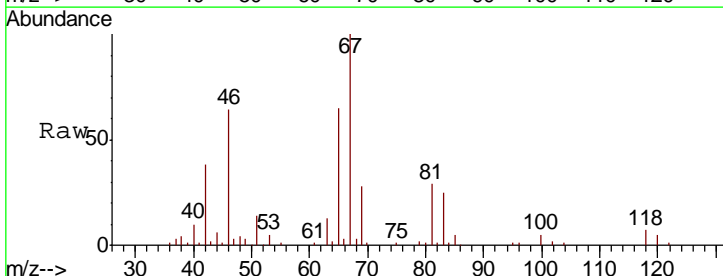
Instrument :
 MSVOA_V
 ClientSampled :

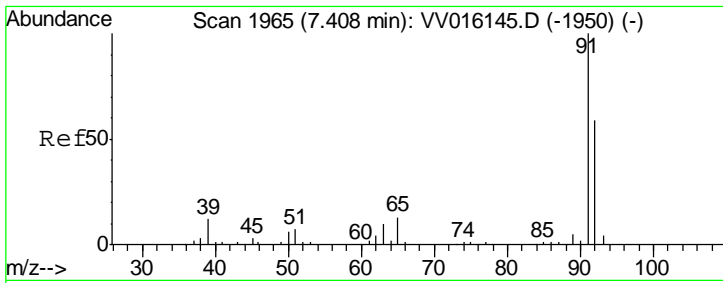
Tgt Ion	Resp	Lower	Upper
83	12122		
55	0.8	66.2	99.2#
98	0.3	37.9	56.9#



#37
 1,2-Dichloropropane
 Concen: 0.754 ug/L
 RT: 6.10 min Scan# 1558
 Delta R.T. -0.10 min
 Lab File: VV016151.D
 Acq: 21 May 2020 14:19

Tgt Ion	Resp	Lower	Upper
63	6384		
112	0.0	3.4	5.0#

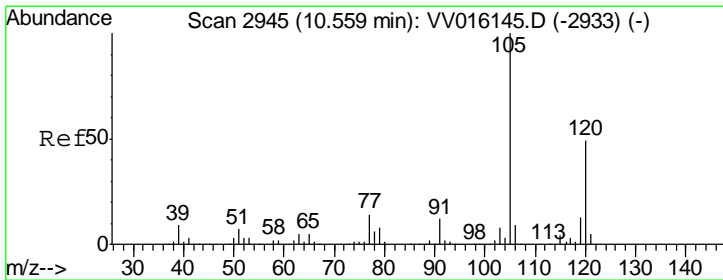
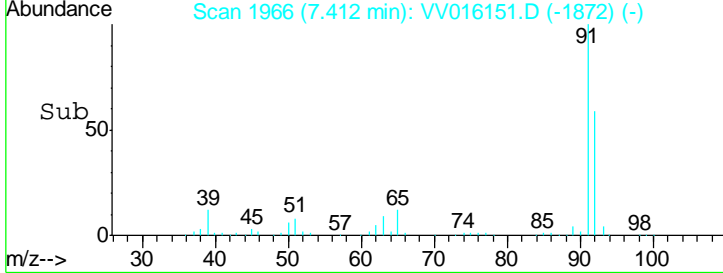
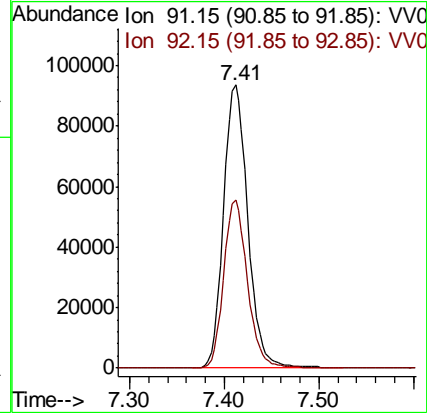
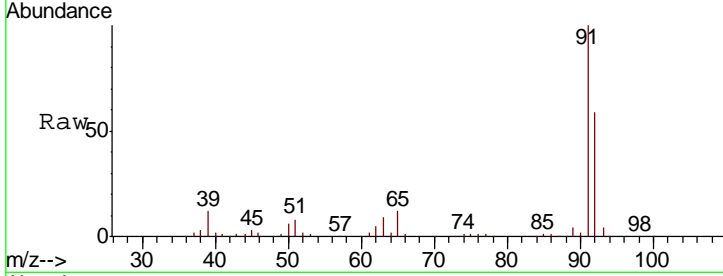




#42
 Toluene
 Concen: 4.727 ug/L
 RT: 7.41 min Scan# 1966
 Delta R.T. 0.00 min
 Lab File: VV016151.D
 Acq: 21 May 2020 14:19

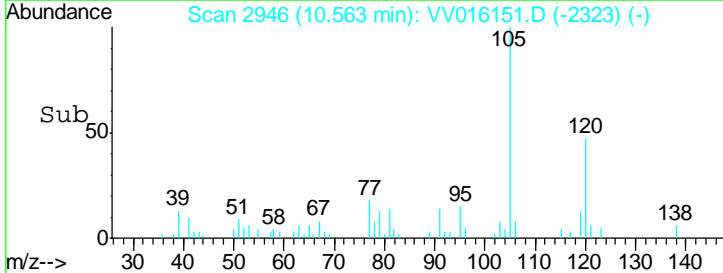
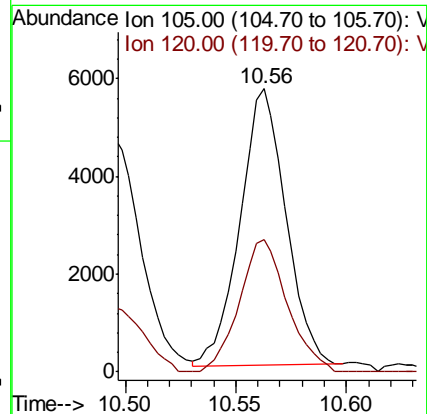
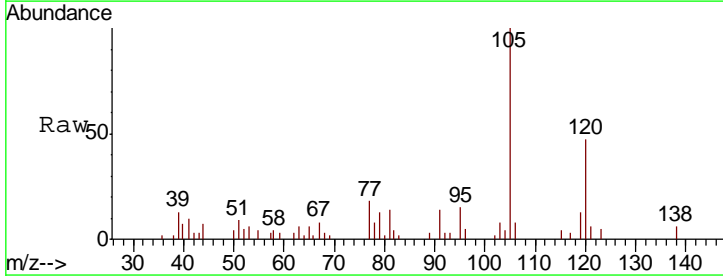
Instrument :
 MSVOA_V
 ClientSampled :

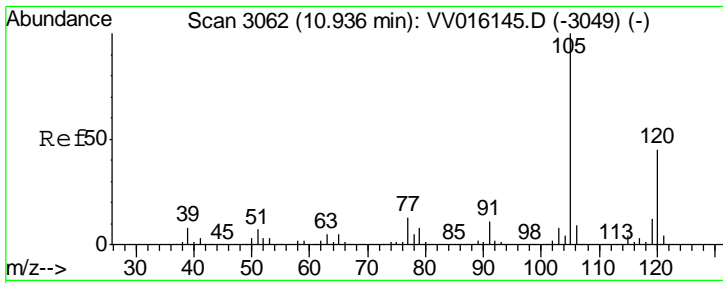
Tgt Ion	Resp	Lower	Upper
91	166971		
92	59.4	40.1	74.5



#43
 1,3,5-Trimethylbenzene
 Concen: 0.253 ug/L
 RT: 10.56 min Scan# 2946
 Delta R.T. 0.00 min
 Lab File: VV016151.D
 Acq: 21 May 2020 14:19

Tgt Ion	Resp	Lower	Upper
105	8197		
120	50.0	0.0	0.0#

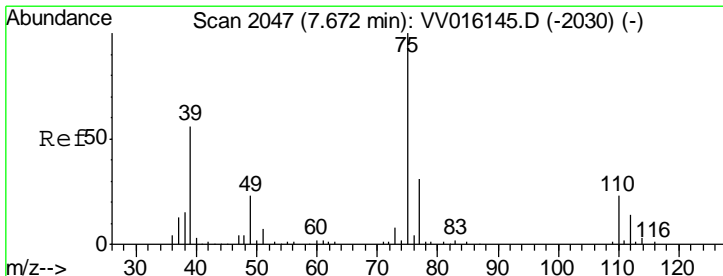
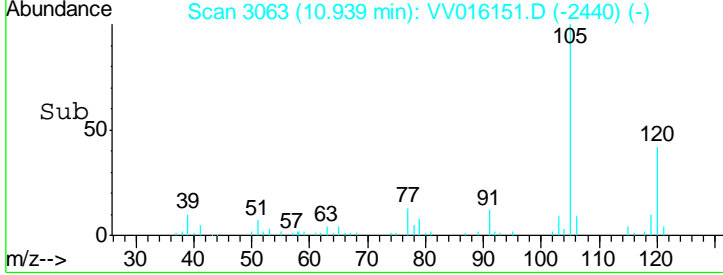
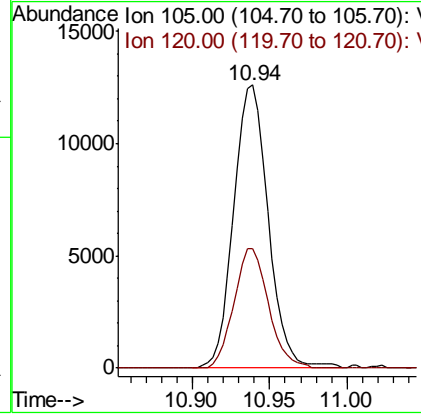
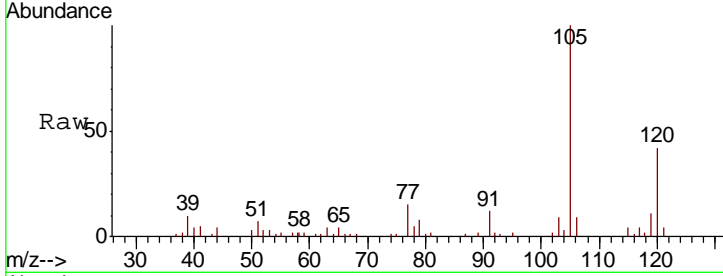




#44
 1,2,4-Trimethylbenzene
 Concen: 0.602 ug/L
 RT: 10.94 min Scan# 3063
 Delta R.T. 0.00 min
 Lab File: VV016151.D
 Acq: 21 May 2020 14:19

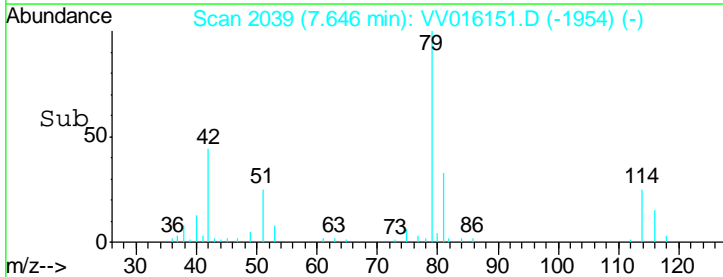
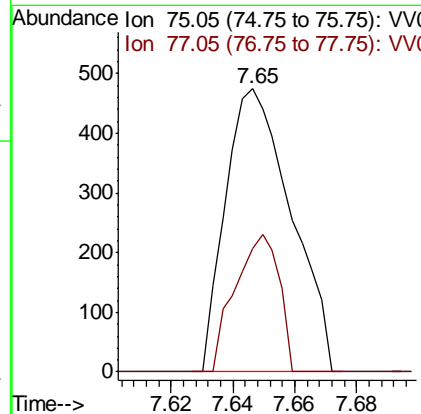
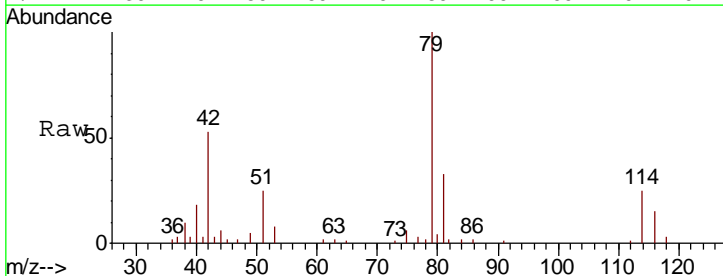
Instrument : MSVOA_V
 ClientSampled :

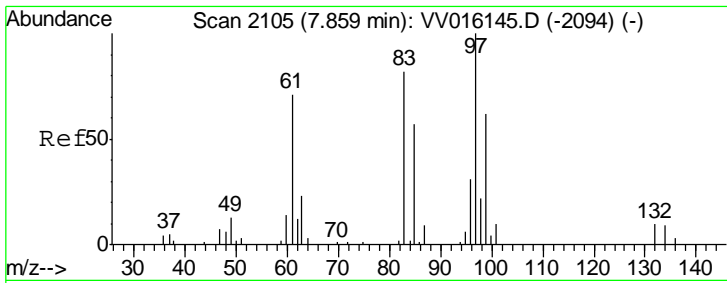
Tgt Ion	Resp	Lower	Upper
105	19512		
120	42.1	0.0	0.0#



#46
 trans-1,3-Dichloropropene
 Concen: 0.069 ug/L
 RT: 7.65 min Scan# 2039
 Delta R.T. -0.03 min
 Lab File: VV016151.D
 Acq: 21 May 2020 14:19

Tgt Ion	Resp	Lower	Upper
75	700		
77	43.7	21.3	39.6#

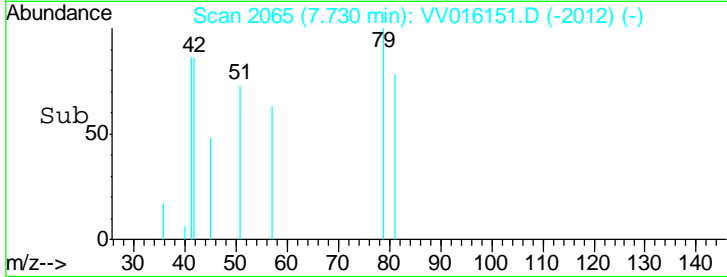
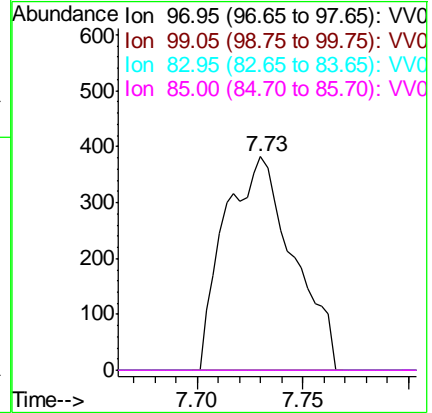
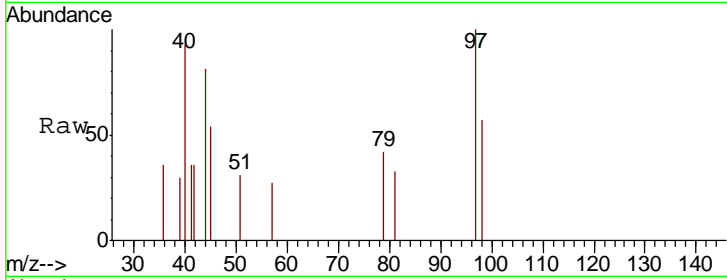




#47
 1,1,2-Trichloroethane
 Concen: 0.153 ug/L
 RT: 7.73 min Scan# 2065
 Delta R.T. -0.13 min
 Lab File: VV016151.D
 Acq: 21 May 2020 14:19

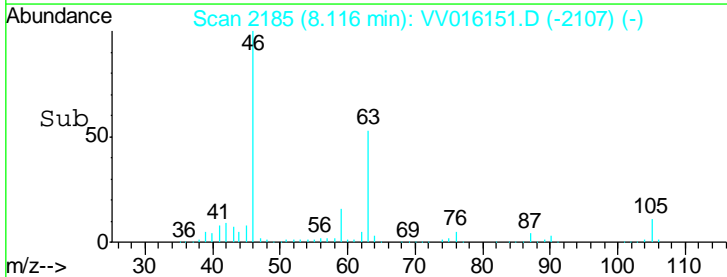
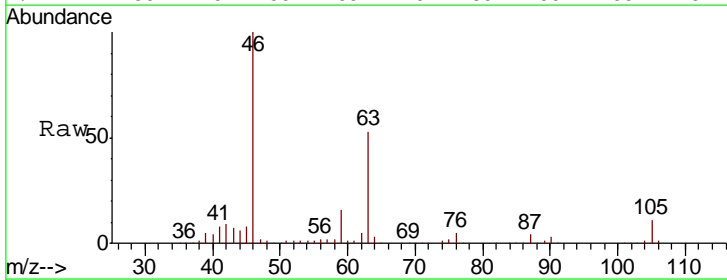
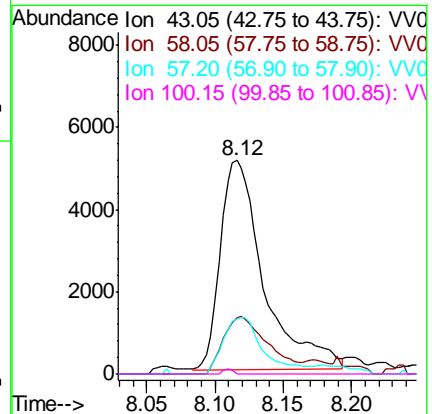
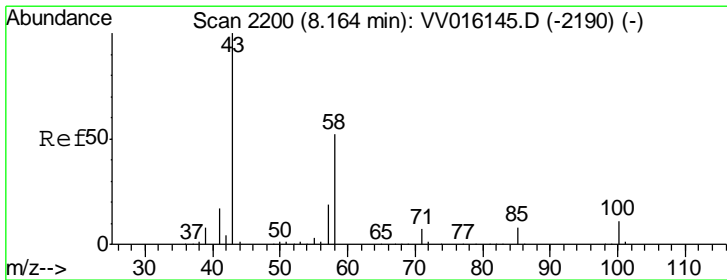
Instrument :
 MSVOA_V
 ClientSampled :

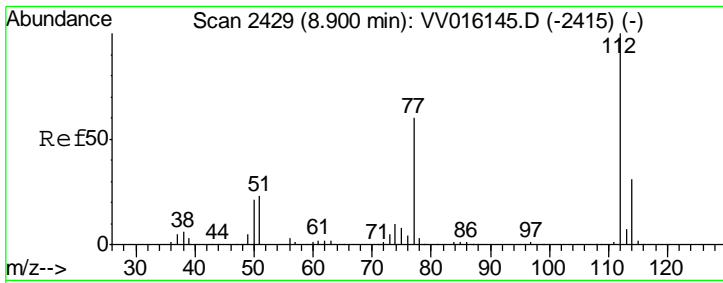
Tgt Ion	Resp	Lower	Upper
97	100		
99	0.0	42.1	78.1#
83	0.0	59.2	110.0#
85	0.0	38.6	71.8#



#50
 2-Hexanone
 Concen: 3.038 ug/L
 RT: 8.12 min Scan# 2185
 Delta R.T. -0.05 min
 Lab File: VV016151.D
 Acq: 21 May 2020 14:19

Tgt Ion	Resp	Lower	Upper
43	100		
58	27.9	40.8	61.2#
57	25.2	14.7	22.1#
100	0.6	9.0	13.6#

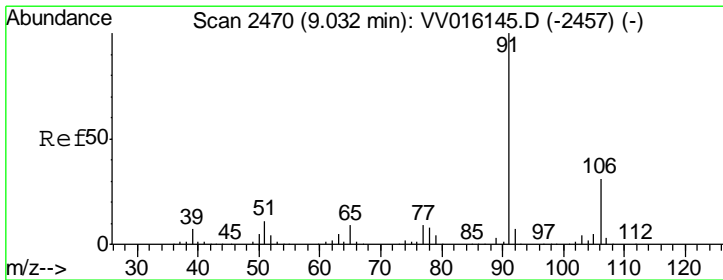
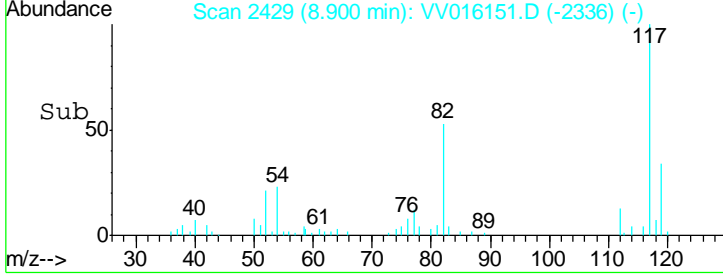
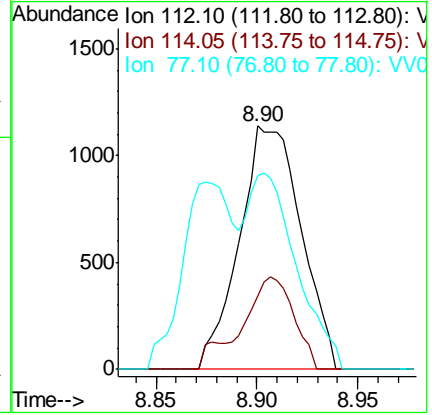
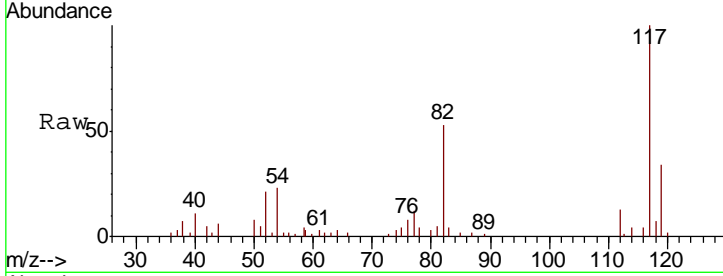




#53
 Chlorobenzene
 Concen: 0.107 ug/L
 RT: 8.90 min Scan# 2429
 Delta R.T. 0.00 min
 Lab File: VV016151.D
 Acq: 21 May 2020 14:19

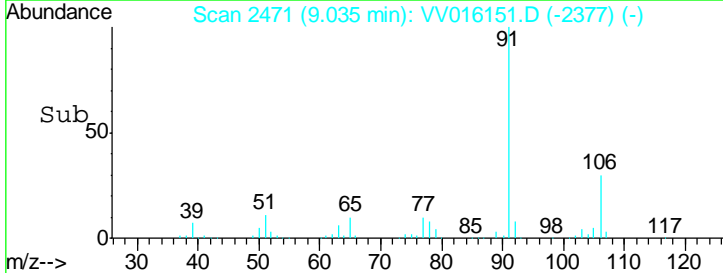
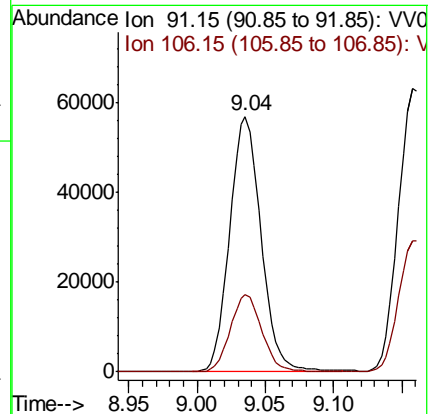
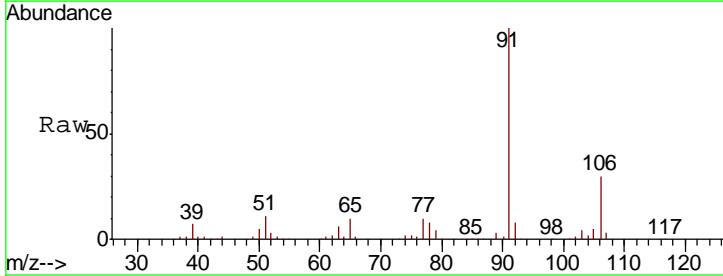
Instrument :
 MSVOA_V
 ClientSampled :

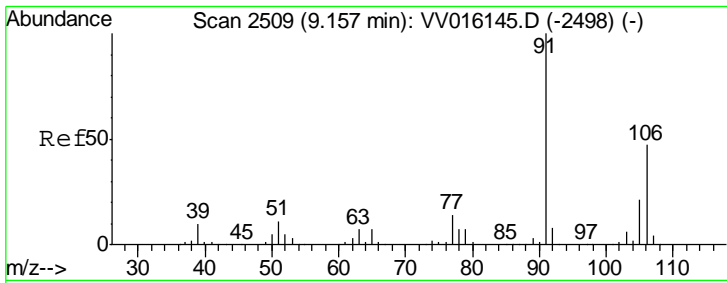
Tgt Ion	Resp	Lower	Upper
112	100		
114	30.1	21.6	40.0
77	79.7	48.6	73.0



#54
 Ethylbenzene
 Concen: 2.272 ug/L
 RT: 9.04 min Scan# 2471
 Delta R.T. 0.00 min
 Lab File: VV016151.D
 Acq: 21 May 2020 14:19

Tgt Ion	Resp	Lower	Upper
91	100		
106	30.3	20.6	38.4

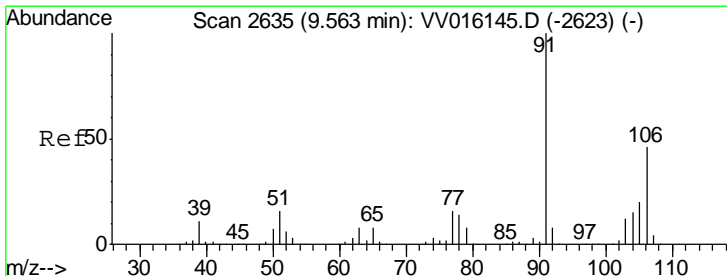
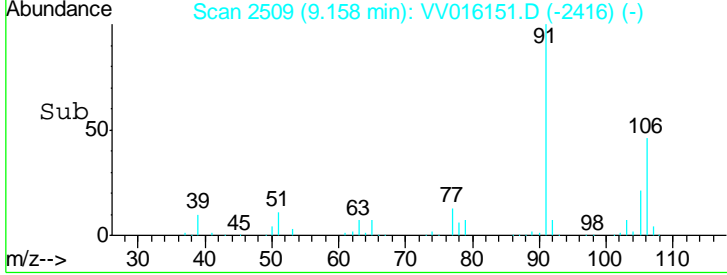
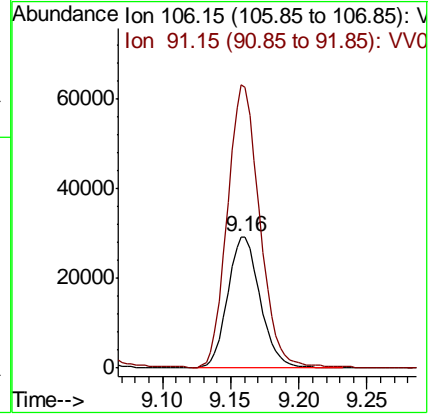
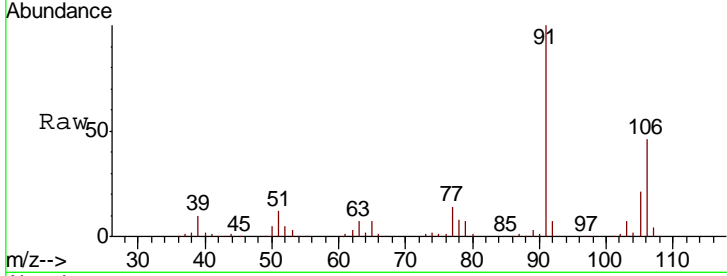




#55
 m,p-xylene
 Concen: 3.273 ug/L
 RT: 9.16 min Scan# 2509
 Delta R.T. 0.00 min
 Lab File: VV016151.D
 Acq: 21 May 2020 14:19

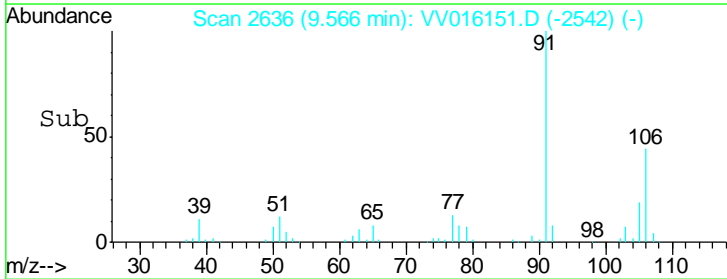
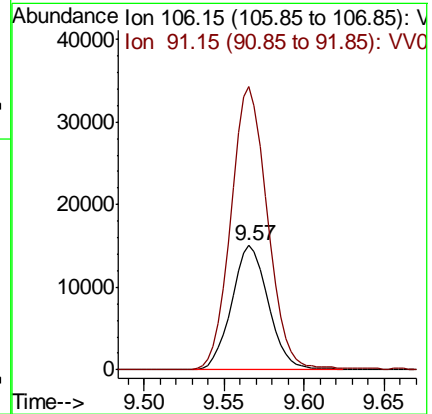
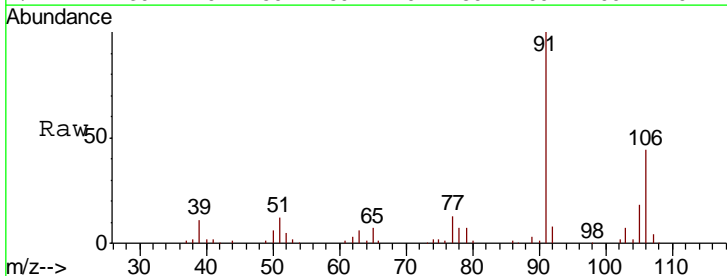
Instrument : MSVOA_V
 ClientSampled :

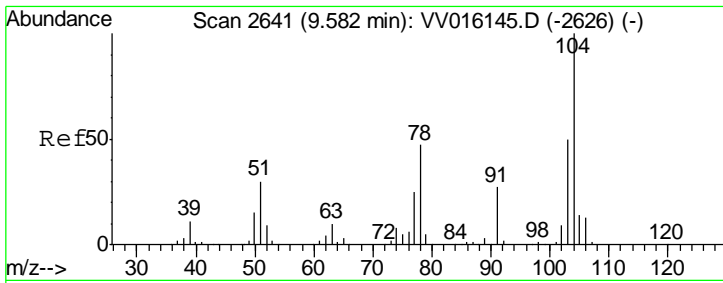
Tgt Ion:106 Resp: 48670
 Ion Ratio Lower Upper
 106 100
 91 215.9 149.9 278.3



#56
 o-xylene
 Concen: 1.654 ug/L
 RT: 9.57 min Scan# 2636
 Delta R.T. 0.00 min
 Lab File: VV016151.D
 Acq: 21 May 2020 14:19

Tgt Ion:106 Resp: 23516
 Ion Ratio Lower Upper
 106 100
 91 228.0 159.7 296.5

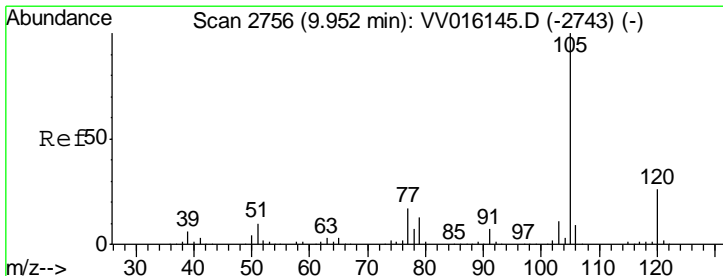
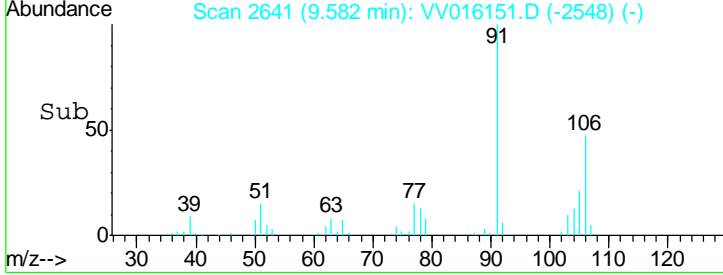
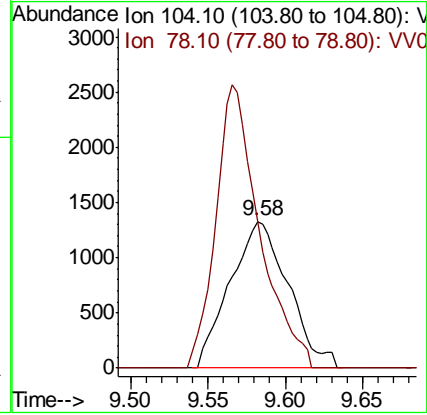
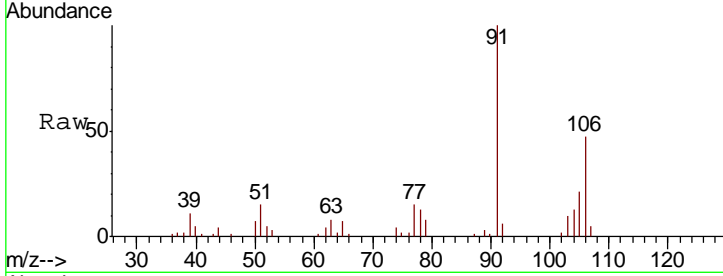




#57
 Styrene
 Concen: 0.146 ug/L
 RT: 9.58 min Scan# 2641
 Delta R.T. 0.00 min
 Lab File: VV016151.D
 Acq: 21 May 2020 14:19

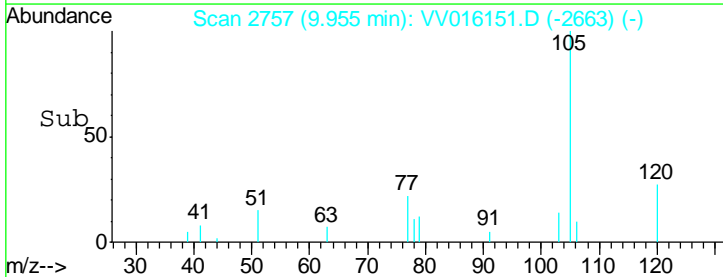
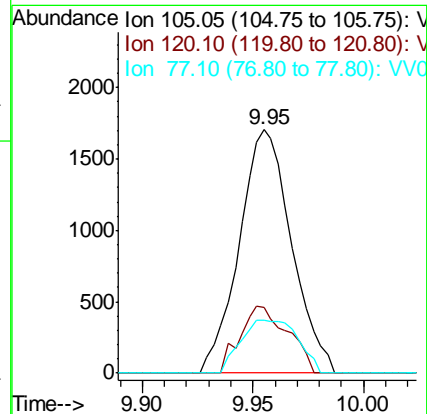
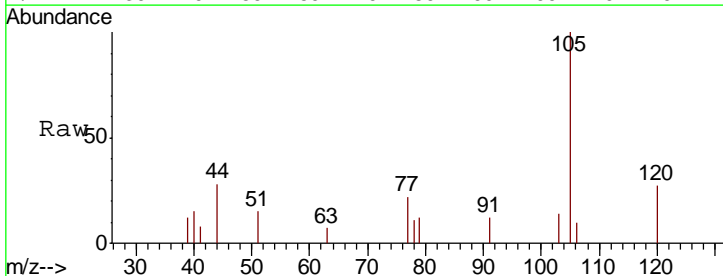
Instrument : MSVOA_V
 ClientSampled :

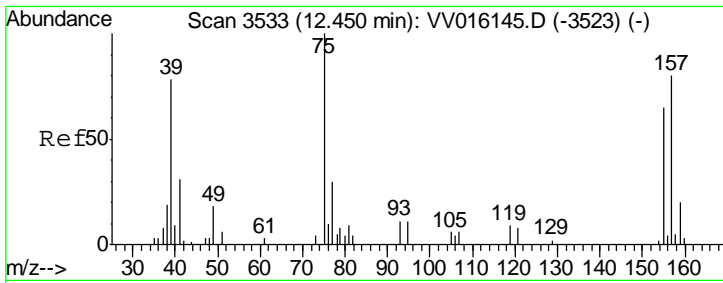
Tgt Ion	Resp	Lower	Upper
104	3474		
78	100.1	33.9	63.0#



#58
 Isopropylbenzene
 Concen: 0.072 ug/L
 RT: 9.95 min Scan# 2757
 Delta R.T. 0.00 min
 Lab File: VV016151.D
 Acq: 21 May 2020 14:19

Tgt Ion	Resp	Lower	Upper
105	2800		
120	25.0	20.8	31.2
77	23.6	14.1	21.1#

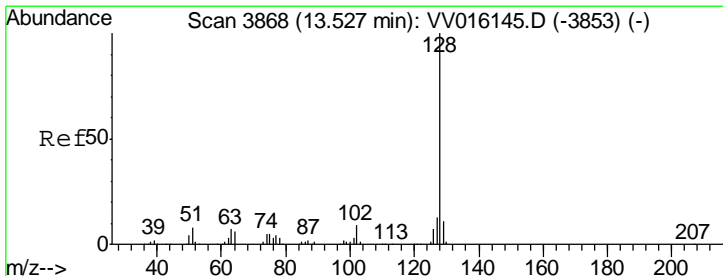
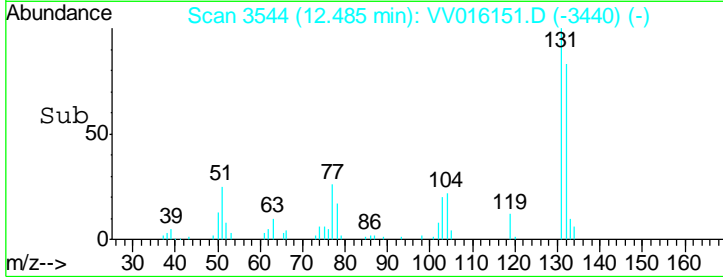
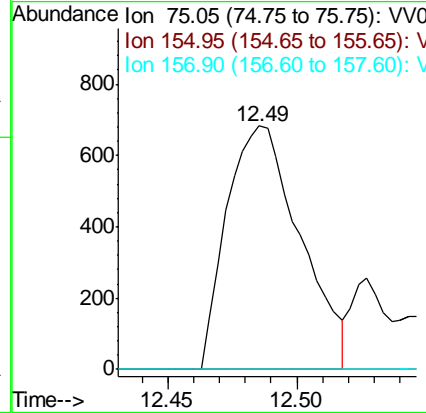
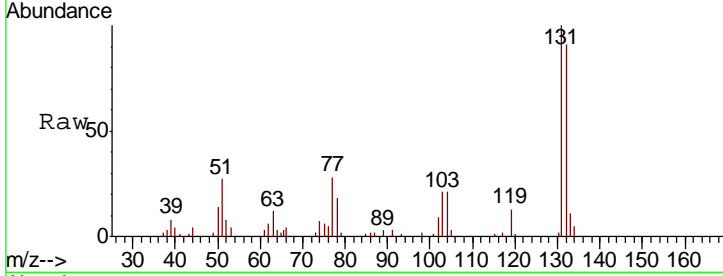




#67
 1,2-Dibromo-3-chloropropane
 Concen: 1.271 ug/L
 RT: 12.49 min Scan# 3544
 Delta R.T. 0.04 min
 Lab File: VV016151.D
 Acq: 21 May 2020 14:19

Instrument :
 MSVOA_V
 ClientSampled :

Tgt Ion	Resp	Lower	Upper
75	1352		
155	0.0	58.2	87.4#
157	0.0	79.4	119.2#



#70
 Naphthalene
 Concen: 850.237 ug/L
 RT: 13.53 min Scan# 3868
 Delta R.T. 0.00 min
 Lab File: VV016151.D
 Acq: 21 May 2020 14:19

Tgt Ion	Resp	Lower	Upper
128	15301545		
129	13.3	8.5	12.7#
127	15.5	10.2	15.2#

