

Data File : VV011021.D
 Acq On : 22 May 2019 16:35
 Operator : SY/MD
 Sample : K3006-07
 Misc : 5.13G/10ML/MSVOA_V/SOIL
 ALS Vial : 1 Sample Multiplier: 1

Instrument :
 MSVOA_V
 ClientSampleId :
 BFHC4

Quant Time: May 23 08:05:20 2019
 Quant Method : Z:\VOASRV\HPCHEM1\MSVOA_V\METHOD\SOM2VLM052019S.M
 Quant Title : VOC Analysis
 QLast Update : Thu May 23 08:00:26 2019
 Response via : Initial Calibration

| Internal Standards | R.T. | QIon | Response | Conc | Units | Dev(Min) |
|----------------------------|-------|------|----------|-------|-------|----------|
| 1) 1,4-Difluorobenzene | 5.66 | 114 | 124459 | 25.00 | ug/L | 0.00 |
| 28) Chlorobenzene-d5 | 8.89 | 117 | 125337 | 25.00 | ug/L | 0.00 |
| 60) 1,4-Dichlorobenzene-d4 | 11.30 | 152 | 51669 | 25.00 | ug/L | 0.00 |

System Monitoring Compounds

| | | | | | | |
|--------------------------------|--------|-------|----------|----------|------|--------|
| 4) Vinyl Chloride-d3 | 1.32 | 65 | 23833 | 16.80 | ug/L | 0.00 |
| Spiked Amount | 25.000 | Range | 30 - 150 | Recovery | = | 67.20% |
| 7) Chloroethane-d5 | 1.57 | 69 | 20262 | 21.09 | ug/L | 0.00 |
| Spiked Amount | 25.000 | Range | 30 - 150 | Recovery | = | 84.36% |
| 10) 1,1-Dichloroethene-d2 | 2.12 | 63 | 37411 | 13.71 | ug/L | 0.00 |
| Spiked Amount | 25.000 | Range | 45 - 110 | Recovery | = | 54.84% |
| 20) 2-Butanone-d5 | 3.94 | 46 | 22508 | 45.97 | ug/L | 0.00 |
| Spiked Amount | 50.000 | Range | 20 - 135 | Recovery | = | 91.94% |
| 24) Chloroform-d | 4.40 | 84 | 73130 | 22.68 | ug/L | 0.00 |
| Spiked Amount | 25.000 | Range | 40 - 150 | Recovery | = | 90.72% |
| 26) 1,2-Dichloroethane-d4 | 5.08 | 65 | 41630 | 21.91 | ug/L | 0.00 |
| Spiked Amount | 25.000 | Range | 70 - 130 | Recovery | = | 87.64% |
| 29) Benzene-d6 | 5.10 | 84 | 145177 | 21.22 | ug/L | 0.00 |
| Spiked Amount | 25.000 | Range | 20 - 135 | Recovery | = | 84.88% |
| 33) 1,2-Dichloropropane-d6 | 6.12 | 67 | 50862 | 23.39 | ug/L | 0.00 |
| Spiked Amount | 25.000 | Range | 70 - 120 | Recovery | = | 93.56% |
| 37) Toluene-d8 | 7.36 | 98 | 126663 | 19.91 | ug/L | 0.00 |
| Spiked Amount | 25.000 | Range | 30 - 130 | Recovery | = | 79.64% |
| 38) trans-1,3-Dichloropropene- | 7.66 | 79 | 17373 | 19.46 | ug/L | 0.00 |
| Spiked Amount | 25.000 | Range | 30 - 135 | Recovery | = | 77.84% |
| 39) 2-Hexanone-d5 | 8.13 | 63 | 17665 | 43.56 | ug/L | 0.00 |
| Spiked Amount | 50.000 | Range | 20 - 135 | Recovery | = | 87.12% |
| 48) 1,1,2,2-Tetrachloroethane- | 10.26 | 84 | 46783 | 21.55 | ug/L | 0.00 |
| Spiked Amount | 25.000 | Range | 45 - 120 | Recovery | = | 86.20% |
| 61) 1,2-Dichlorobenzene-d4 | 11.67 | 152 | 49815 | 23.75 | ug/L | 0.00 |
| Spiked Amount | 25.000 | Range | 75 - 120 | Recovery | = | 95.00% |

Target Compounds

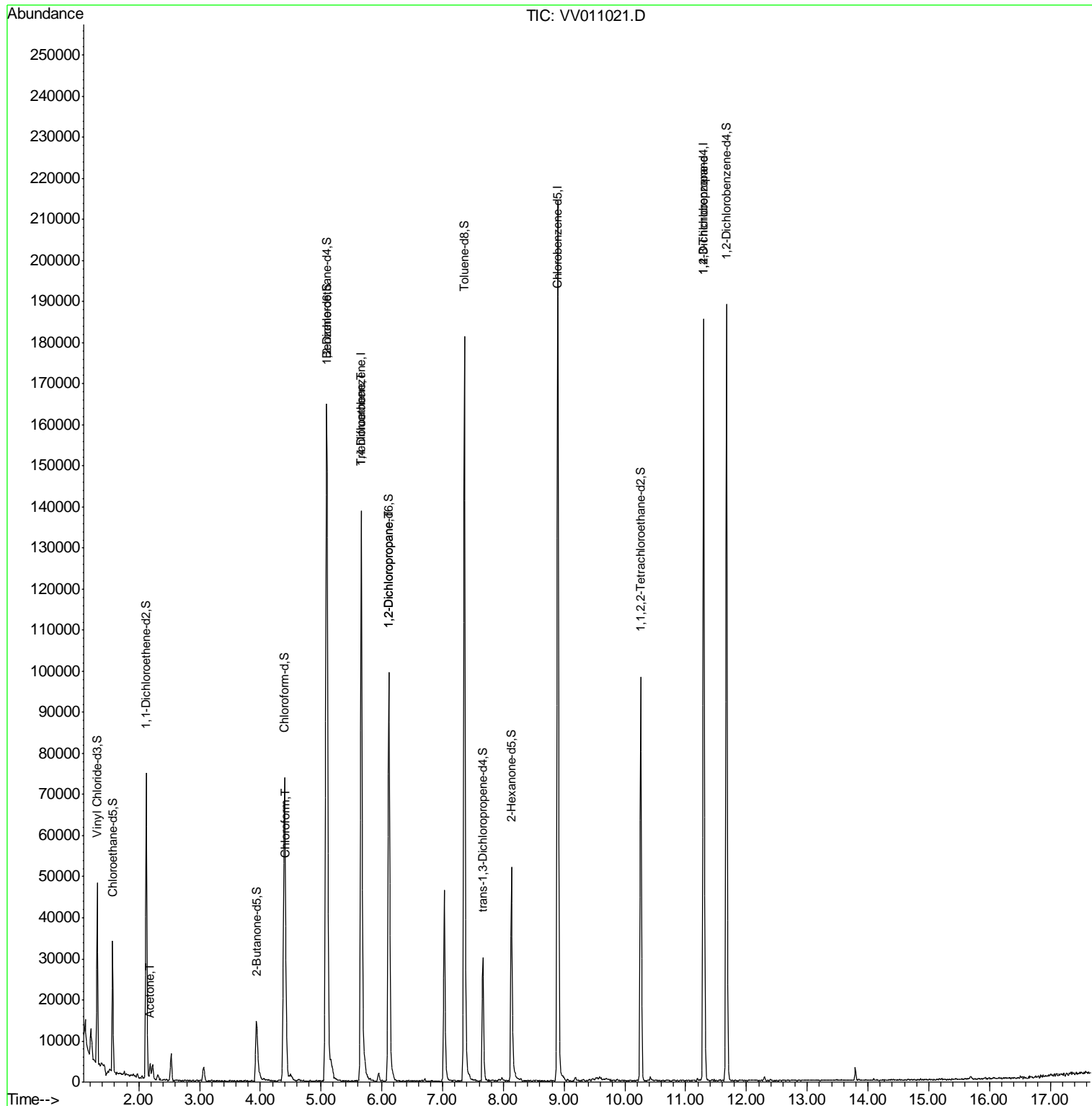
| | | | | | Qvalue |
|----------------------------|-------|----|------|--------------|--------|
| 13) Acetone | 2.19 | 43 | 2616 | 5.541 ug/L | 96 |
| 25) Chloroform | 4.42 | 83 | 5402 | 1.447 ug/L | 83 |
| 35) Trichloroethene | 5.66 | 95 | 3597 | 1.802 ug/L # | 5 |
| 40) 1,2-Dichloropropane | 6.12 | 63 | 5381 | 2.834 ug/L # | 86 |
| 59) 1,2,3-Trichloropropane | 11.29 | 75 | 6508 | 4.158 ug/L | 93 |

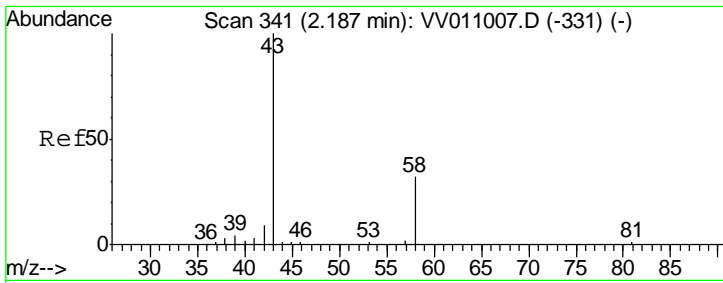
(#) = qualifier out of range (m) = manual integration (+) = signals summed

Data File : VV011021.D
Acq On : 22 May 2019 16:35
Operator : SY/MD
Sample : K3006-07
Misc : 5.13G/10ML/MSVOA_V/SOIL
ALS Vial : 1 Sample Multiplier: 1

Instrument :
MSVOA_V
Client Sampled :
BFHC4

Quant Time: May 23 08:05:20 2019
Quant Method : Z:\VOASRV\HPCHEM1\MSVOA_V\METHOD\SOM2VLM052019S.M
Quant Title : VOC Analysis
QLast Update : Thu May 23 08:00:26 2019
Response via : Initial Calibration

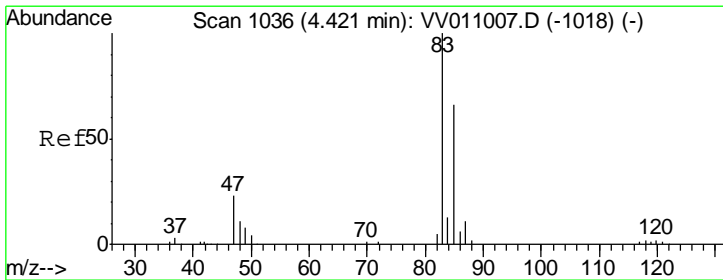
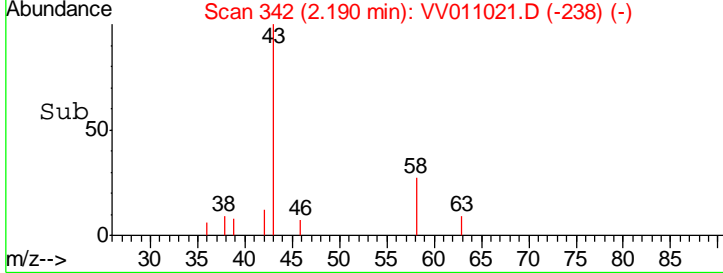
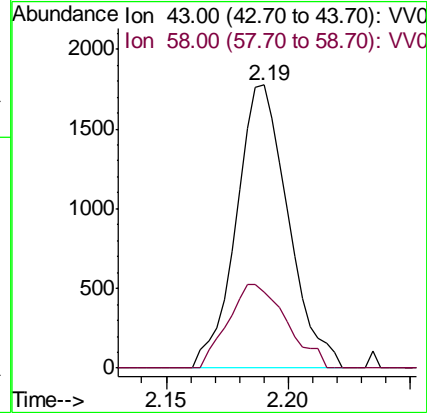
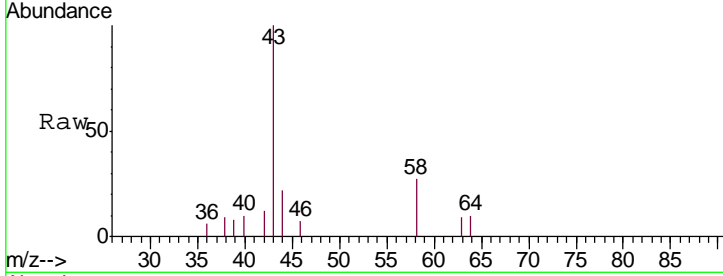




#13
 Acetone
 Concen: 5.541 ug/L
 RT: 2.19 min Scan# 342
 Delta R.T. 0.00 min
 Lab File: VV011021.D
 Acq: 22 May 2019 16:35

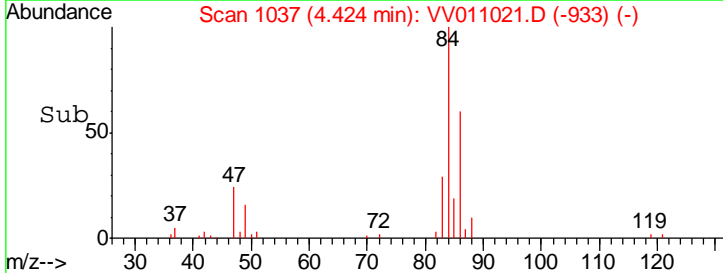
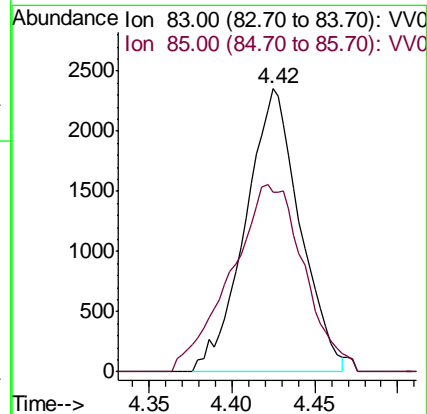
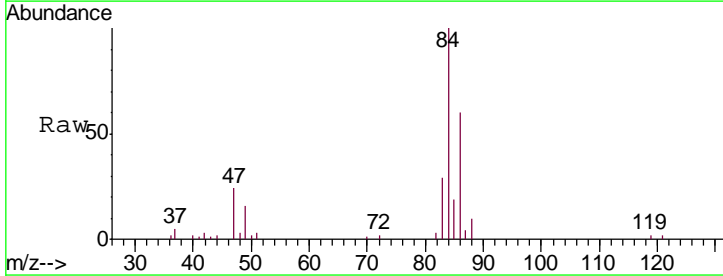
Instrument :
 MSVOA_V
 ClientSampled :
 BFHC4

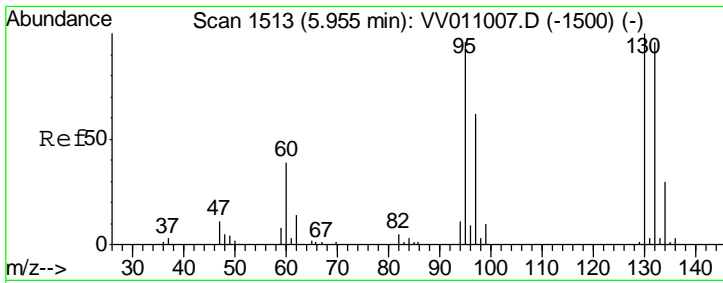
| Tgt Ion | Resp | Lower | Upper |
|---------|------|-------|-------|
| 43 | 100 | | |
| 58 | 32.5 | 0.0 | 60.8 |



#25
 Chloroform
 Concen: 1.447 ug/L
 RT: 4.42 min Scan# 1037
 Delta R.T. 0.00 min
 Lab File: VV011021.D
 Acq: 22 May 2019 16:35

| Tgt Ion | Resp | Lower | Upper |
|---------|------|-------|-------|
| 83 | 100 | | |
| 85 | 52.1 | 45.6 | 84.8 |

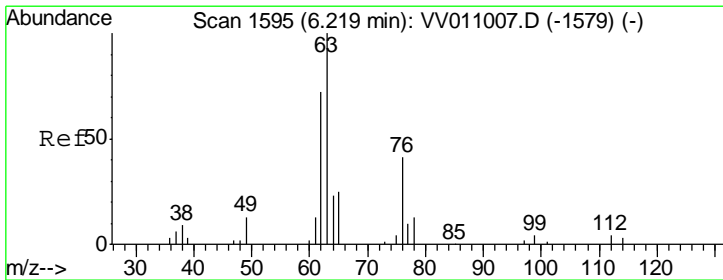
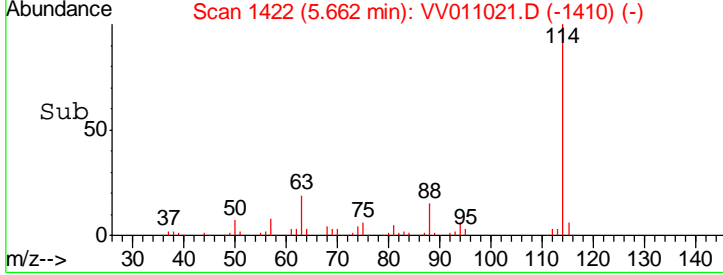
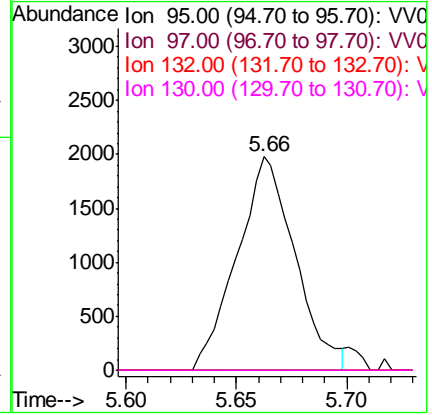
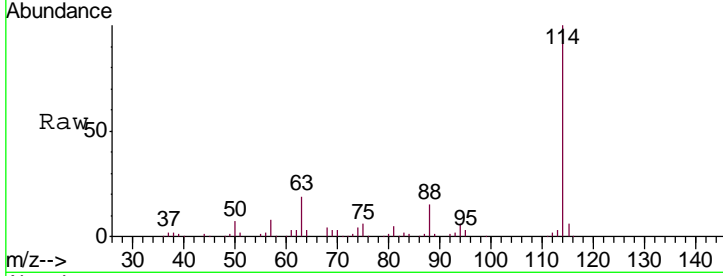




#35
 Trichloroethene
 Concen: 1.802 ug/L
 RT: 5.66 min Scan# 1422
 Delta R.T. -0.29 min
 Lab File: VV011021.D
 Acq: 22 May 2019 16:35

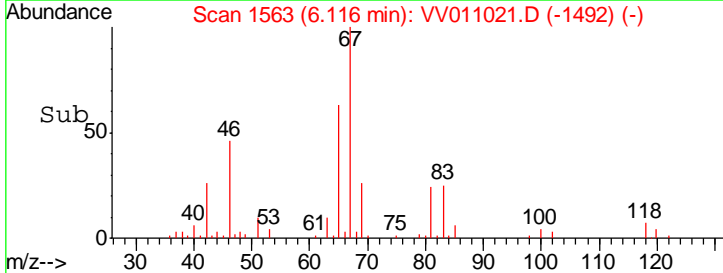
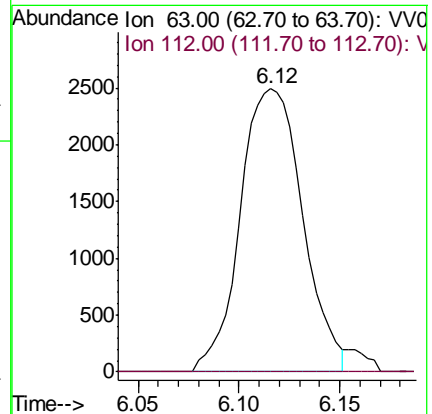
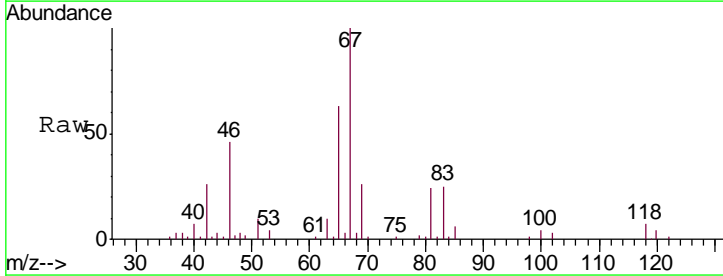
Instrument :
 MSVOA_V
 ClientSampled :
 BFHC4

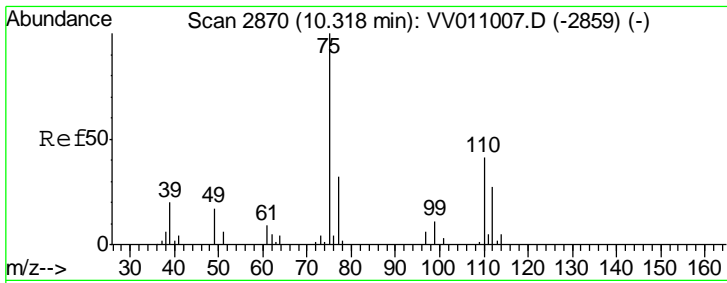
| Tgt Ion | Resp | Lower | Upper |
|---------|------|-------|--------|
| 95 | 100 | | |
| 97 | 0.0 | 43.4 | 80.6# |
| 132 | 0.0 | 68.8 | 127.8# |
| 130 | 1.1 | 69.9 | 129.9# |



#40
 1,2-Dichloropropane
 Concen: 2.834 ug/L
 RT: 6.12 min Scan# 1563
 Delta R.T. -0.10 min
 Lab File: VV011021.D
 Acq: 22 May 2019 16:35

| Tgt Ion | Resp | Lower | Upper |
|---------|------|-------|-------|
| 63 | 100 | | |
| 112 | 0.0 | 3.6 | 5.4# |





#59
 1,2,3-Trichloropropane
 Concen: 4.158 ug/L
 RT: 11.29 min Scan# 3173
 Delta R.T. 0.97 min
 Lab File: VV011021.D
 Acq: 22 May 2019 16:35

Instrument : MSVOA_V
 ClientSampled : BFHC4

Tgt Ion: 75 Resp: 6508

| Ion | Ratio | Lower | Upper |
|-----|-------|-------|-------|
| 75 | 100 | | |
| 77 | 35.7 | 25.4 | 38.2 |

