

Data Path : Z:\VOASRV\HPCHEM1\MSVOA V\DATA\VV052220\
 Data File : VV016188.D
 Acq On : 22 May 2020 22:46
 Operator : SY/MD
 Sample : VIBLK45
 Misc : 25.0mL/MSVOA V/WATER
 ALS Vial : 26 Sample Multiplier: 1

Instrument :
 MSVOA_V
 ClientSampleId :

Quant Time: May 23 05:13:18 2020
 Quant Method : Z:\VOASRV\HPCHEM1\MSVOA_V\METHOD\SOMVTR050720WMA.M
 Quant Title : TRACE VOA SOM01.0
 QLast Update : Sat May 23 05:08:14 2020
 Response via : Initial Calibration

Internal Standards	R.T.	QIon	Response	Conc	Units	Dev(Min)
1) 1,4-Difluorobenzene	0.00	114	0	0.00	ug/L	-5.64
28) Chlorobenzene-d5	8.88	117	147	5.00	ug/L	0.00
61) 1,4-Dichlorobenzene-d4	11.28	152	224	5.00	ug/L	0.00

System Monitoring Compounds

4) Vinyl Chloride-d3	0.00	65	0	0.00	ug/L	
Spiked Amount	5.000	Range	40 - 130	Recovery	=	0.00%#
7) Chloroethane-d5	0.00	69	0	0.00	ug/L	
Spiked Amount	5.000	Range	65 - 130	Recovery	=	0.00%#
11) 1,1-Dichloroethene-d2	2.14	63	842	0.00	ug/L	0.01
Spiked Amount	5.000	Range	60 - 125	Recovery	=	0.00%#
20) 2-Butanone-d5	0.00	46	0	0.00	ug/L	
Spiked Amount	50.000	Range	40 - 130	Recovery	=	0.00%#
24) Chloroform-d	4.64	84	155	0.00	ug/L	0.26
Spiked Amount	5.000	Range	70 - 125	Recovery	=	0.00%#
26) 1,2-Dichloroethane-d4	0.00	65	0	0.00	ug/L	
Spiked Amount	5.000	Range	70 - 130	Recovery	=	0.00%#
32) Benzene-d6	0.00	84	0	0.00	ug/L	
Spiked Amount	5.000	Range	70 - 125	Recovery	=	0.00%#
36) 1,2-Dichloropropane-d6	0.00	67	0	0.00	ug/L	
Spiked Amount	5.000	Range	60 - 140	Recovery	=	0.00%#
41) Toluene-d8	0.00	98	0	0.00	ug/L	
Spiked Amount	5.000	Range	70 - 130	Recovery	=	0.00%#
45) trans-1,3-Dichloropropene-	0.00	79	0	0.00	ug/L	
Spiked Amount	5.000	Range	55 - 130	Recovery	=	0.00%#
48) 2-Hexanone-d5	0.00	63	0	0.00	ug/L	
Spiked Amount	50.000	Range	45 - 130	Recovery	=	0.00%#
59) 1,1,2,2-Tetrachloroethane-	0.00	84	0	0.00	ug/L	
Spiked Amount	5.000	Range	65 - 120	Recovery	=	0.00%#
65) 1,2-Dichlorobenzene-d4	11.65	152	20	0.55	ug/L	0.00
Spiked Amount	5.000	Range	80 - 120	Recovery	=	11.00%#

Target Compounds

Target Compounds	R.T.	QIon	Response	Conc	Units	Ovalue
29) 1,1,1-Trichloroethane	4.64	97	15992	986.513	ug/L	98
30) Cyclohexane	4.71	56	586	36.073	ug/L #	46
31) Carbon tetrachloride	4.64	117	2029	145.030	ug/L	98
33) Benzene	5.14	78	1018	27.525	ug/L	100
34) Trichloroethene	5.96	95	779	73.796	ug/L	89
35) Methylcyclohexane	6.15	83	1111	69.577	ug/L	90
40) 4-Methyl-2-pentanone	7.27	43	135	23.051	ug/L #	46
42) Toluene	7.41	91	54629	1393.512	ug/L	97
43) 1,3,5-Trimethylbenzene	10.56	105	2070	57.520	ug/L #	100
44) 1,2,4-Trimethylbenzene	10.94	105	5833	162.196	ug/L #	100
46) trans-1,3-Dichloropropene	7.41	75	424	37.796	ug/L #	1
47) 1,1,2-Trichloroethane	7.68	97	63	10.040	ug/L #	16
49) Tetrachloroethene	8.00	164	44	5.974	ug/L #	1
50) 2-Hexanone	8.20	43	19	4.588	ug/L #	40
54) Ethylbenzene	9.04	91	13832	310.294	ug/L	98
55) m,p-xylene	9.16	106	11782	713.814	ug/L	100
56) o-xylene	9.57	106	3164	200.502	ug/L	92

Data Path : Z:\VOASRV\HPCHEM1\MSVOA V\DATA\VV052220\
 Data File : VV016188.D
 Acq On : 22 May 2020 22:46
 Operator : SY/MD
 Sample : VIBLK45
 Misc : 25.0mL/MSVOA V/WATER
 ALS Vial : 26 Sample Multiplier: 1

Instrument :
 MSVOA_V
 ClientSampleId :

Quant Time: May 23 05:13:18 2020
 Quant Method : Z:\VOASRV\HPCHEM1\MSVOA_V\METHOD\SOMVTR050720WMA.M
 Quant Title : TRACE VOA SOM01.0
 QLast Update : Sat May 23 05:08:14 2020
 Response via : Initial Calibration

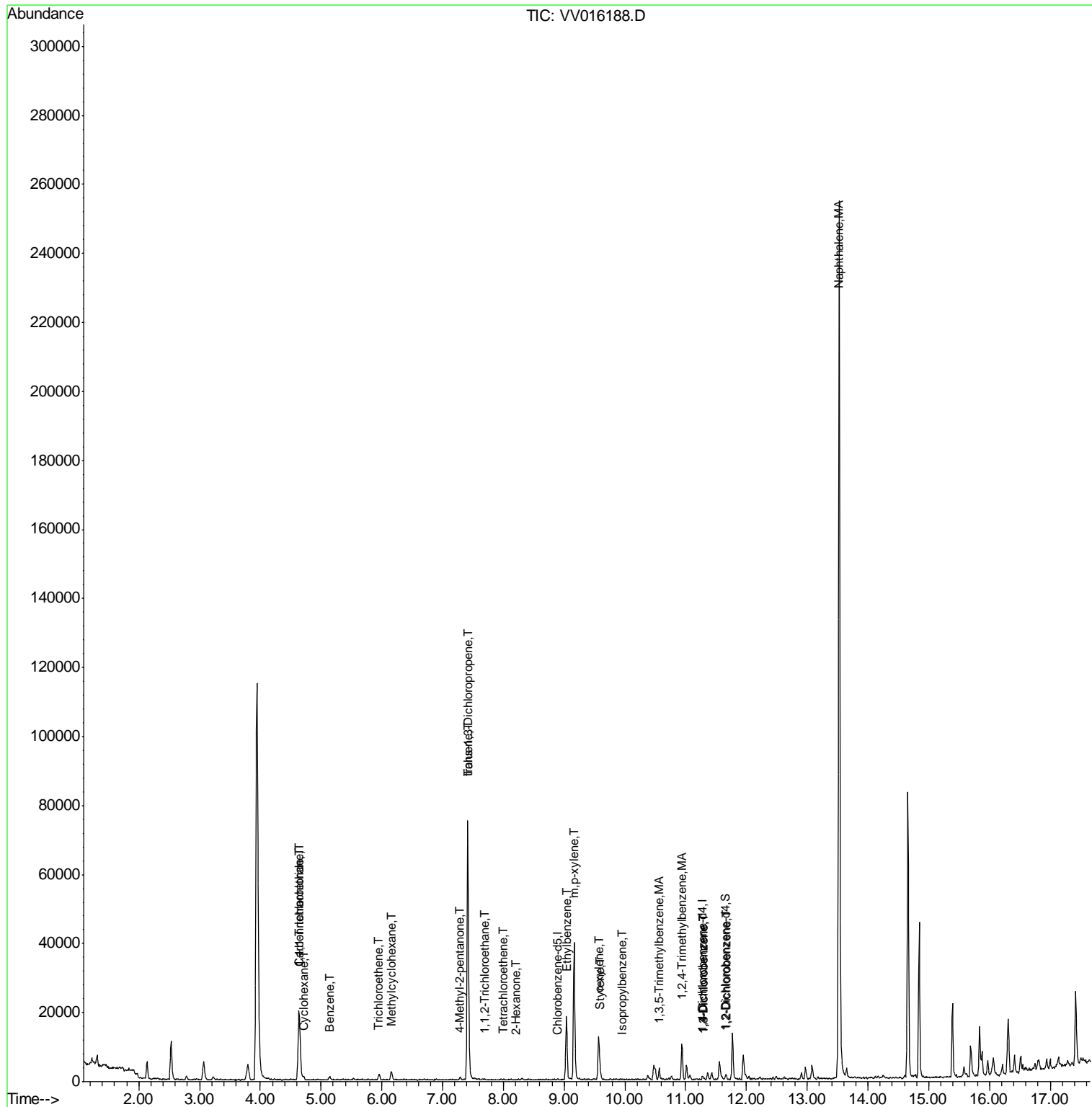
Internal Standards	R.T.	QIon	Response	Conc	Units	Dev(Min)
57) Styrene	9.59	104	1551	58.761	ug/L	99
58) Isopropylbenzene	9.96	105	212	4.890	ug/L #	53
63) 1,3-Dichlorobenzene	11.31	146	23	0.381	ug/L #	25
64) 1,4-Dichlorobenzene	11.31	146	23	0.379	ug/L #	25
66) 1,2-Dichlorobenzene	11.67	146	282	5.163	ug/L #	24
70) Naphthalene	13.53	128	202595	3359.794	ug/L	99

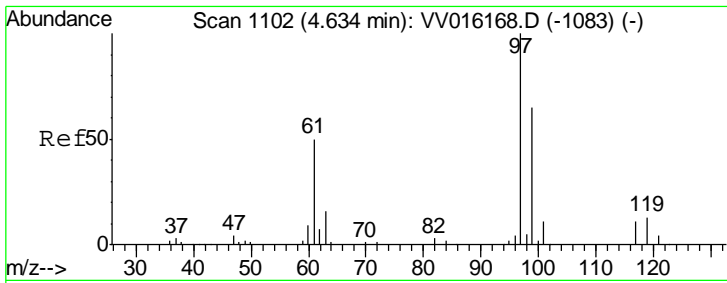
(#) = qualifier out of range (m) = manual integration (+) = signals summed

Data Path : Z:\VOASRV\HPCHEM1\MSVOA V\DATA\VV052220\
 Data File : VV016188.D
 Acq On : 22 May 2020 22:46
 Operator : SY/MD
 Sample : VIBLK45
 Misc : 25.0mL/MSVOA V/WATER
 ALS Vial : 26 Sample Multiplier: 1

Instrument :
 MSVOA_V
 ClientSampleId :

Quant Time: May 23 05:13:18 2020
 Quant Method : Z:\VOASRV\HPCHEM1\MSVOA_V\METHOD\SOMVTR050720WMA.M
 Quant Title : TRACE VOA SOM01.0
 QLast Update : Sat May 23 05:08:14 2020
 Response via : Initial Calibration

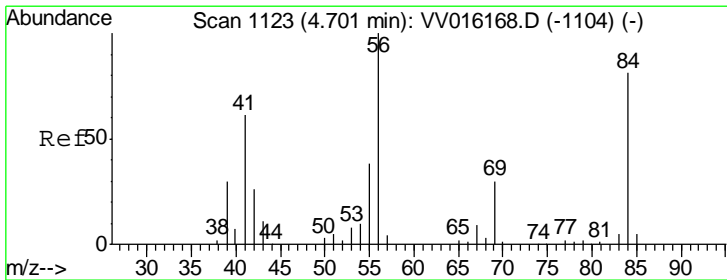
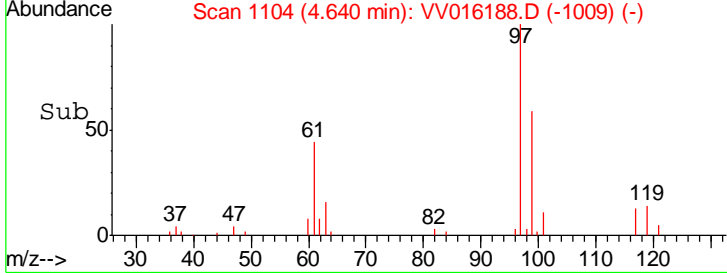
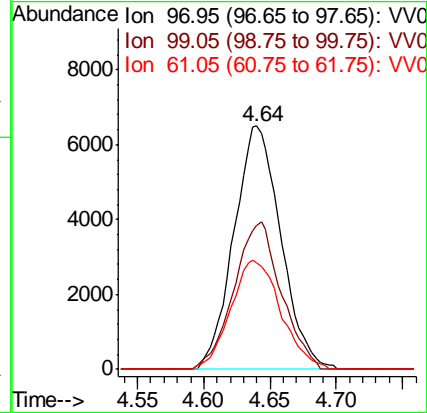
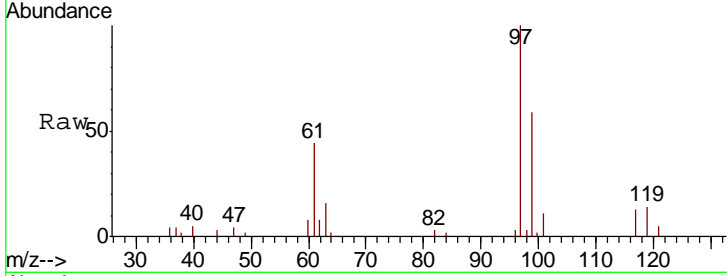




#29
 1,1,1-Trichloroethane
 Concen: 986.513 ug/L
 RT: 4.64 min Scan# 1104
 Delta R.T. 0.01 min
 Lab File: VV016188.D
 Acq: 22 May 2020 22:46

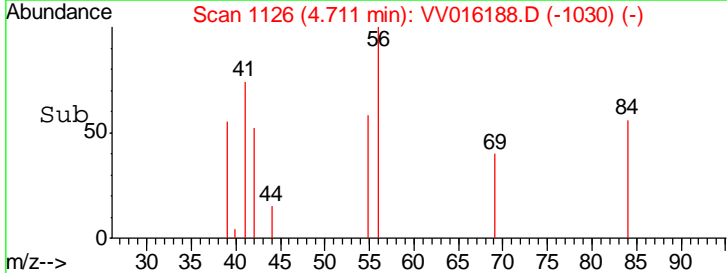
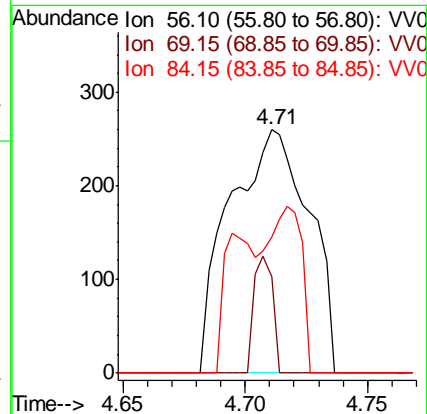
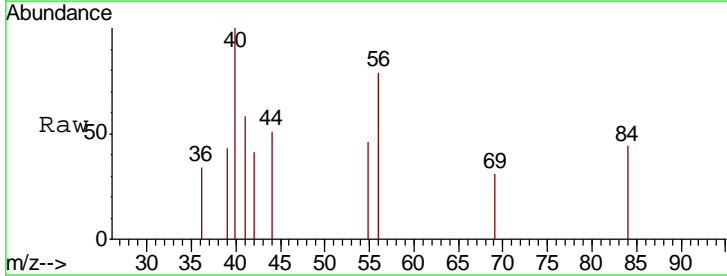
Instrument :
 MSVOA_V
 ClientSampled :

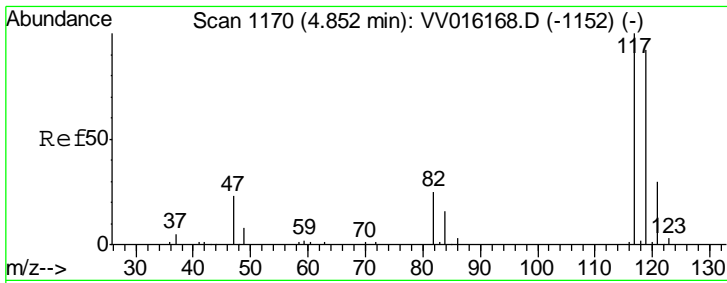
Tgt Ion	Resp	Lower	Upper
97	15992		
99	61.0	50.7	76.1
61	47.9	38.8	58.2



#30
 Cyclohexane
 Concen: 36.073 ug/L
 RT: 4.71 min Scan# 1126
 Delta R.T. 0.01 min
 Lab File: VV016188.D
 Acq: 22 May 2020 22:46

Tgt Ion	Resp	Lower	Upper
56	586		
69	10.9	24.2	36.2#
84	30.5	68.3	102.5#

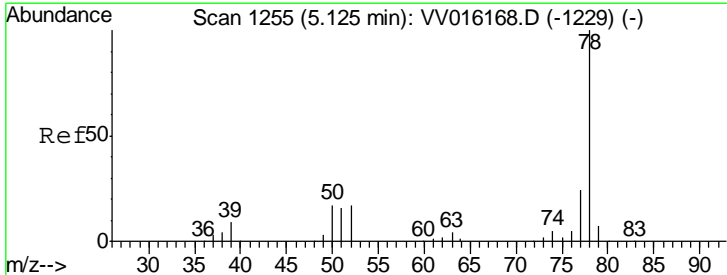
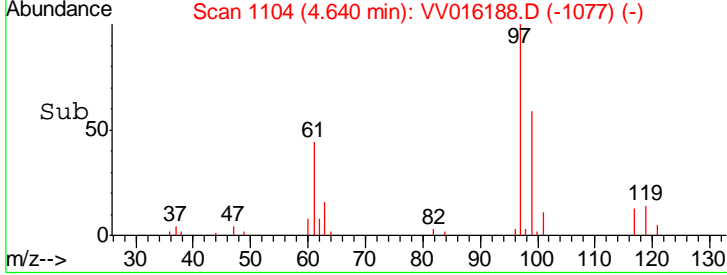
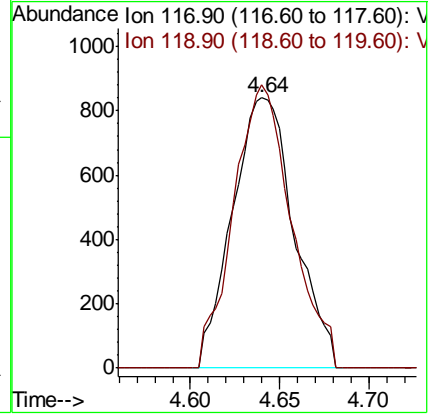
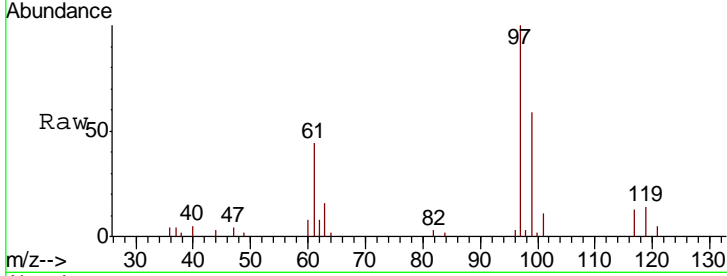




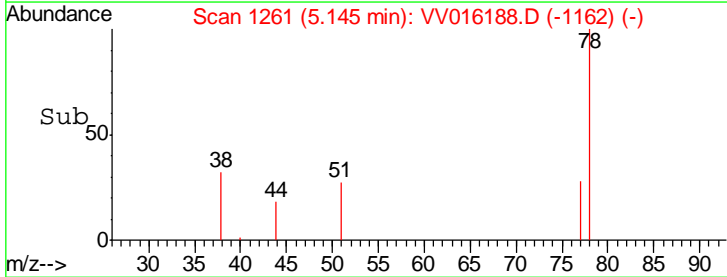
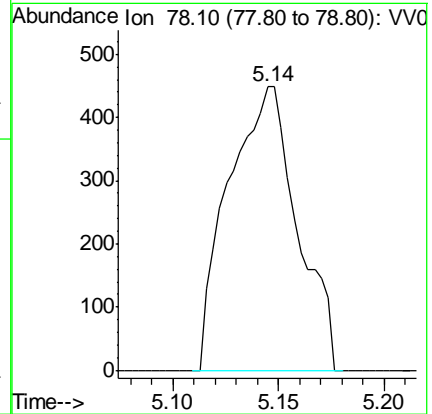
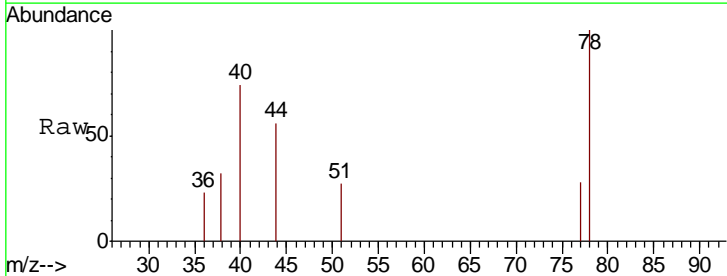
#31
 Carbon tetrachloride
 Concen: 145.030 ug/L
 RT: 4.64 min Scan# 1104
 Delta R.T. -0.21 min
 Lab File: VV016188.D
 Acq: 22 May 2020 22:46

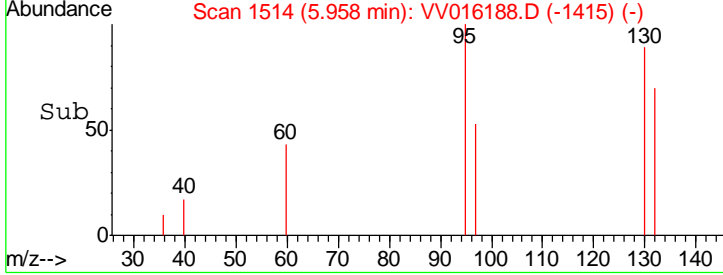
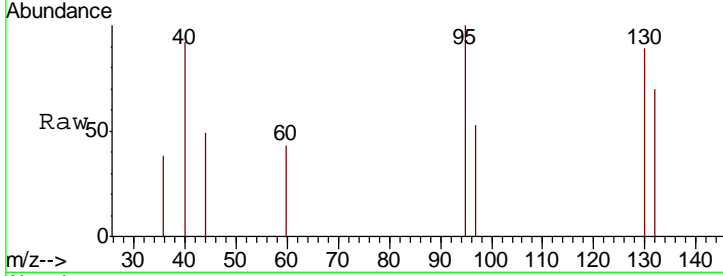
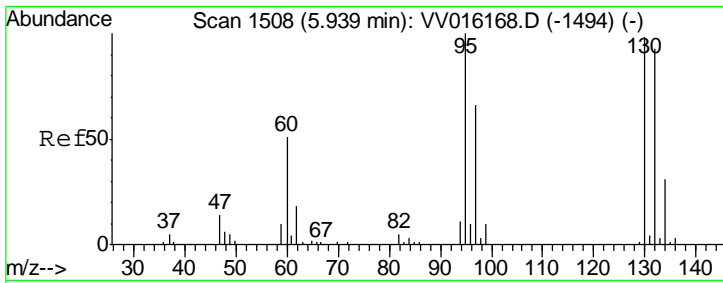
Instrument :
 MSVOA_V
 ClientSampled :

Tgt Ion: 117 Resp: 2029
 Ion Ratio Lower Upper
 117 100
 119 98.2 77.3 115.9



#33
 Benzene
 Concen: 27.525 ug/L
 RT: 5.14 min Scan# 1261
 Delta R.T. 0.02 min
 Lab File: VV016188.D
 Acq: 22 May 2020 22:46
 Tgt Ion: 78 Resp: 1018



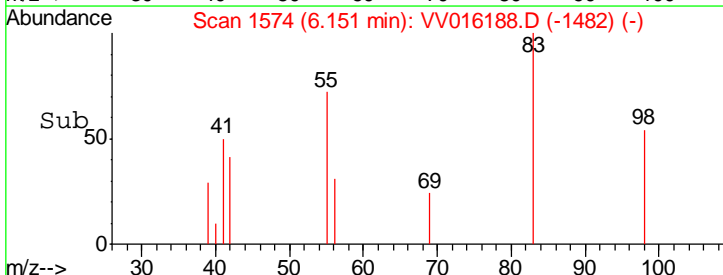
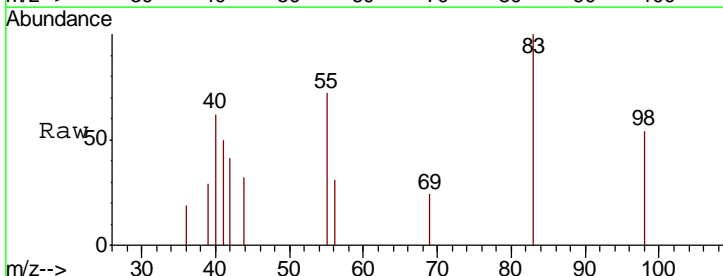
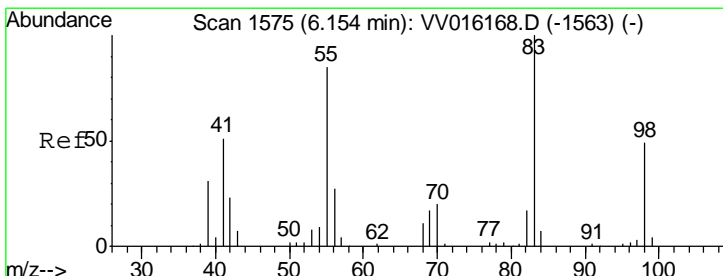
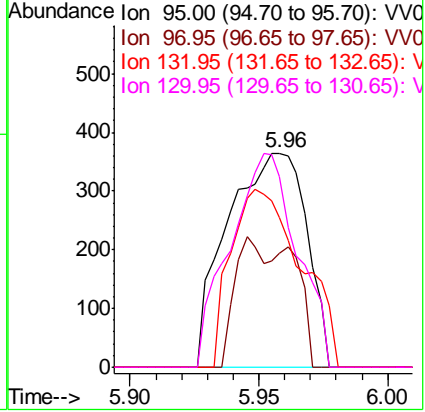


#34
 Trichloroethene
 Concen: 73.796 ug/L
 RT: 5.96 min Scan# 1514
 Delta R.T. 0.02 min
 Lab File: VV016188.D
 Acq: 22 May 2020 22:46

Instrument :
 MSVOA_V
 ClientSampled :

Tgt Ion: 95 Resp: 779

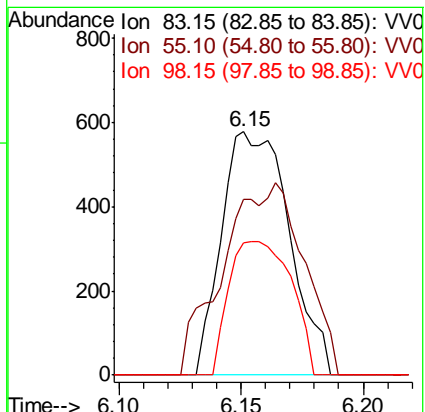
Ion	Ratio	Lower	Upper
95	100		
97	53.3	43.3	80.5
132	70.1	60.3	112.1
130	89.0	66.0	122.6

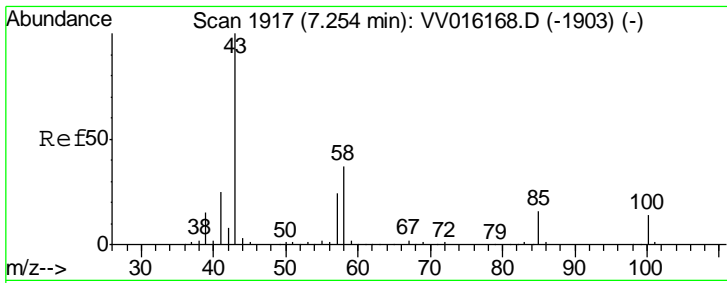


#35
 Methylcyclohexane
 Concen: 69.577 ug/L
 RT: 6.15 min Scan# 1574
 Delta R.T. -0.00 min
 Lab File: VV016188.D
 Acq: 22 May 2020 22:46

Tgt Ion: 83 Resp: 1111

Ion	Ratio	Lower	Upper
83	100		
55	94.3	66.2	99.2
98	50.9	37.9	56.9

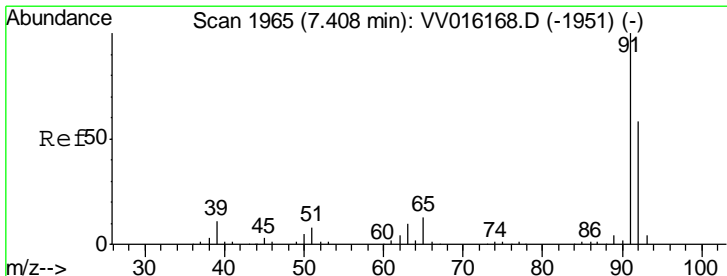
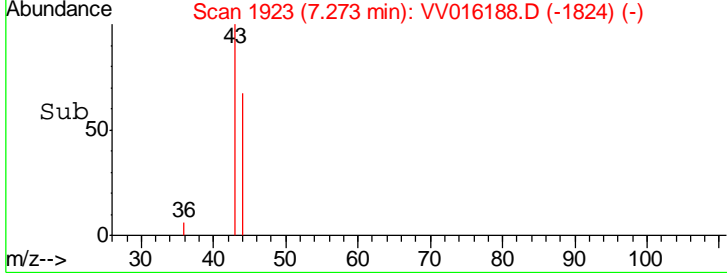
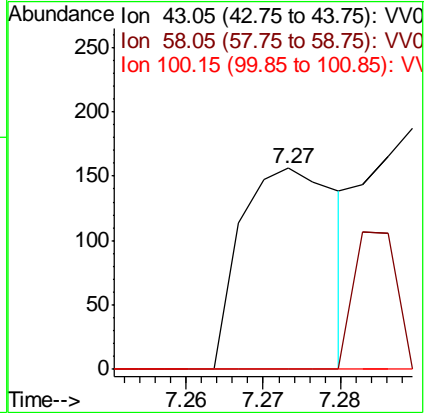
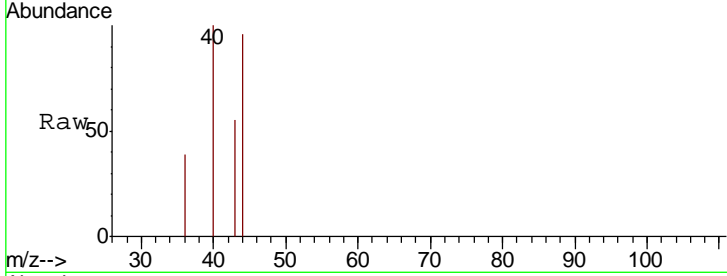




#40
 4-Methyl-2-pentanone
 Concen: 23.051 ug/L
 RT: 7.27 min Scan# 1923
 Delta R.T. 0.02 min
 Lab File: VV016188.D
 Acq: 22 May 2020 22:46

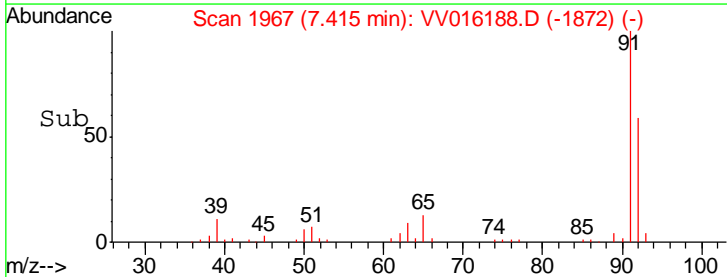
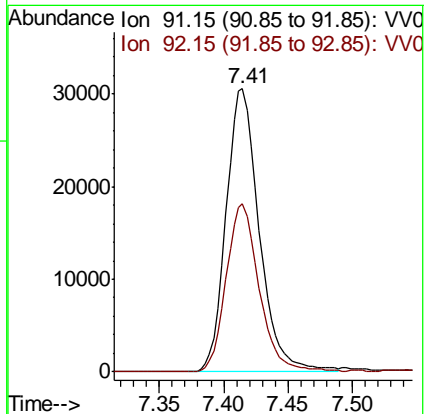
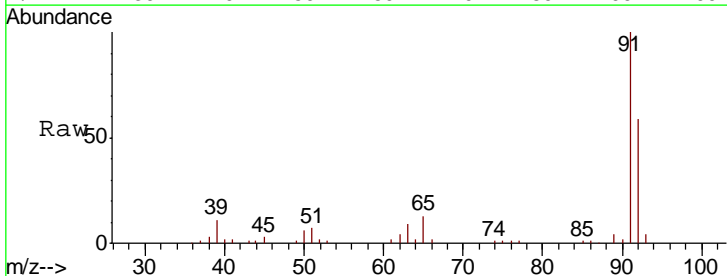
Instrument :
 MSVOA_V
 ClientSampled :

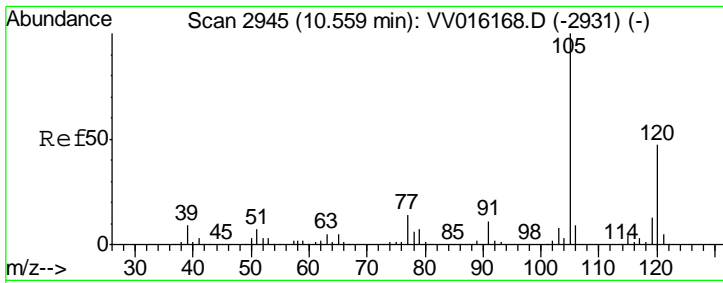
Tgt Ion	Resp	Lower	Upper
43	100		
58	0.0	29.0	43.4#
100	0.0	10.9	16.3#



#42
 Toluene
 Concen: 1393.512 ug/L
 RT: 7.41 min Scan# 1967
 Delta R.T. 0.01 min
 Lab File: VV016188.D
 Acq: 22 May 2020 22:46

Tgt Ion	Resp	Lower	Upper
91	100		
92	59.4	40.1	74.5

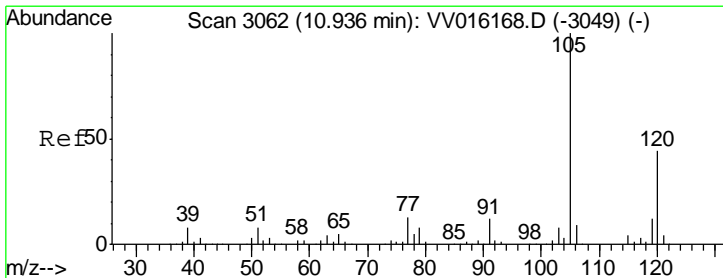
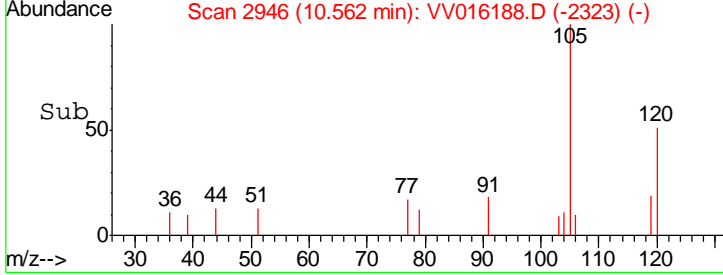
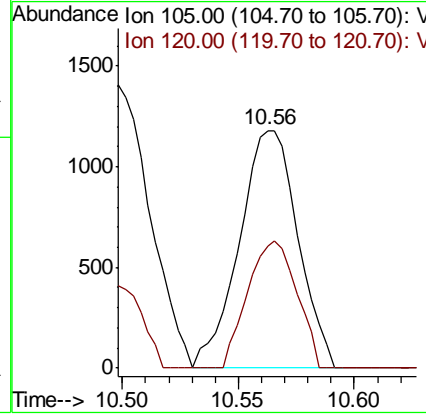
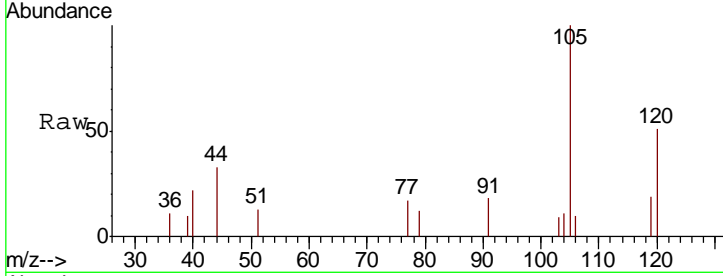




#43
 1,3,5-Trimethylbenzene
 Concen: 57.520 ug/L
 RT: 10.56 min Scan# 2946
 Delta R.T. 0.00 min
 Lab File: VV016188.D
 Acq: 22 May 2020 22:46

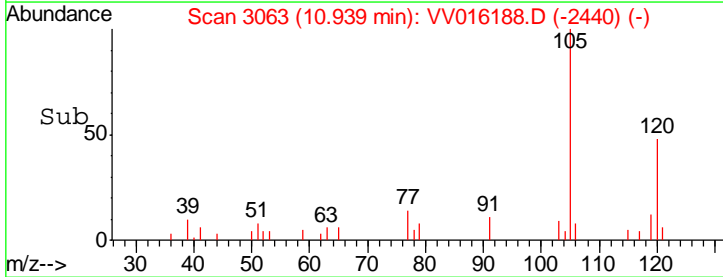
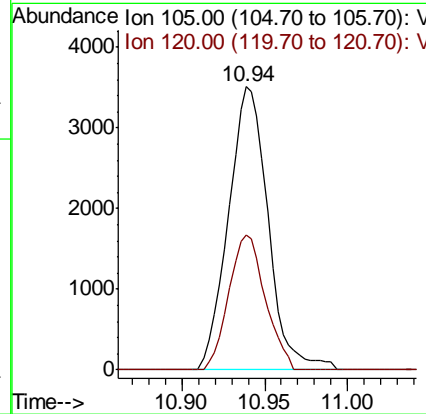
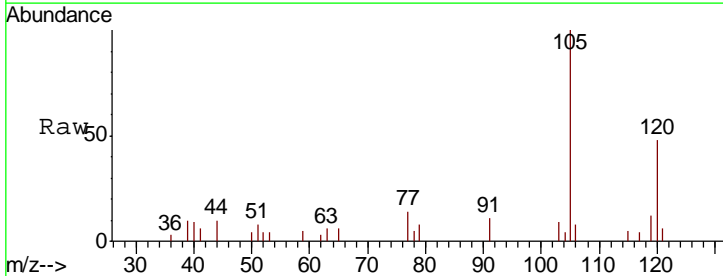
Instrument :
 MSVOA_V
 ClientSampled :

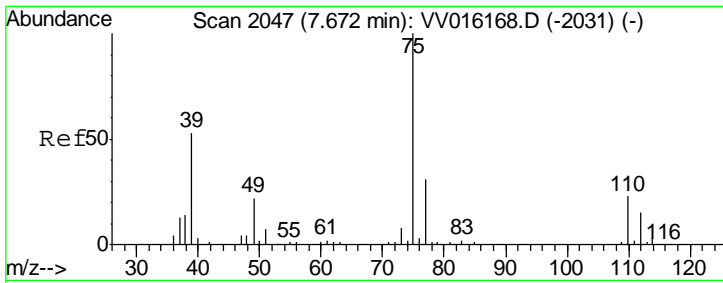
Tgt Ion:105 Resp: 2070
 Ion Ratio Lower Upper
 105 100
 120 44.9 0.0 0.0#



#44
 1,2,4-Trimethylbenzene
 Concen: 162.196 ug/L
 RT: 10.94 min Scan# 3063
 Delta R.T. 0.00 min
 Lab File: VV016188.D
 Acq: 22 May 2020 22:46

Tgt Ion:105 Resp: 5833
 Ion Ratio Lower Upper
 105 100
 120 43.9 0.0 0.0#

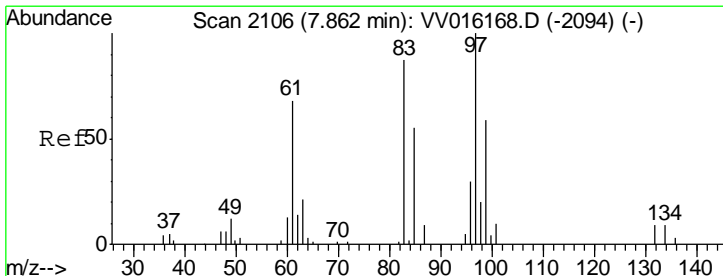
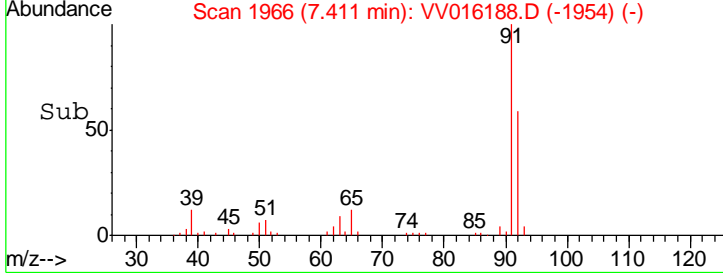
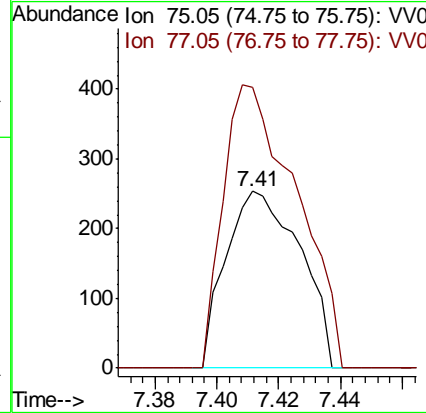
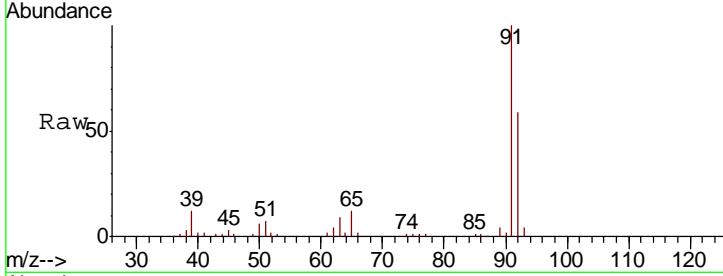




#46
 trans-1,3-Dichloropropene
 Concen: 37.796 ug/L
 RT: 7.41 min Scan# 1966
 Delta R.T. -0.26 min
 Lab File: VV016188.D
 Acq: 22 May 2020 22:46

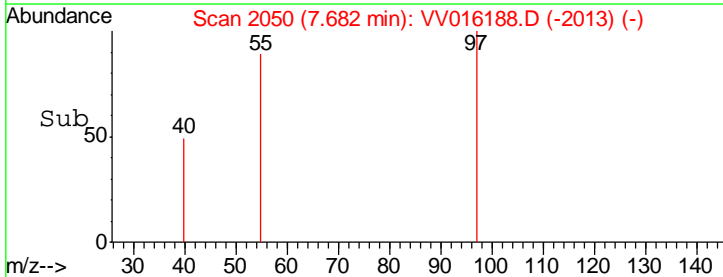
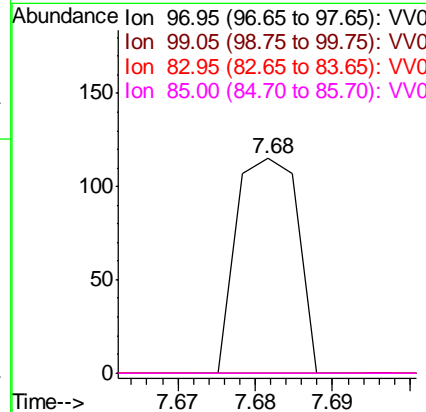
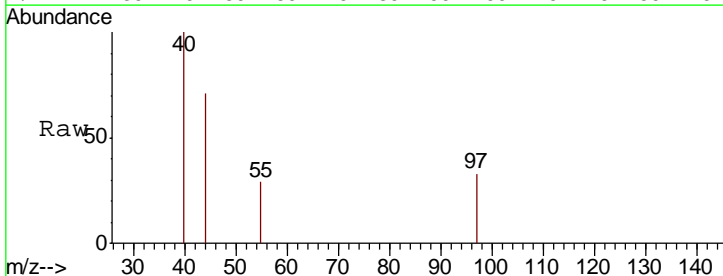
Instrument : MSVOA_V
 ClientSampled :

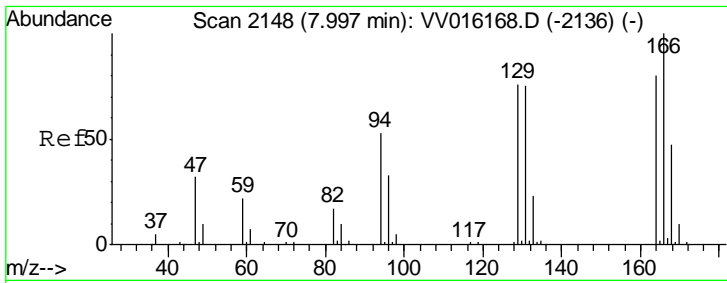
Tgt Ion	Resp	Lower	Upper
75	100		
77	158.7	21.3	39.6#



#47
 1,1,2-Trichloroethane
 Concen: 10.040 ug/L
 RT: 7.68 min Scan# 2050
 Delta R.T. -0.18 min
 Lab File: VV016188.D
 Acq: 22 May 2020 22:46

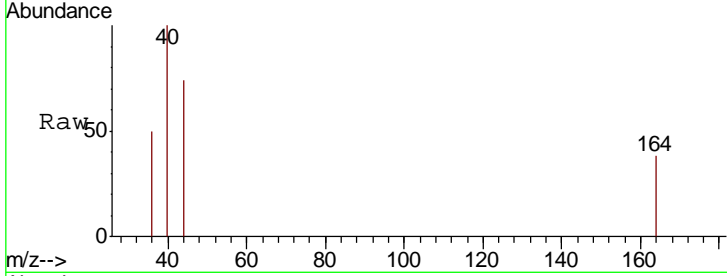
Tgt Ion	Resp	Lower	Upper
97	100		
99	0.0	42.1	78.1#
83	0.0	59.2	110.0#
85	0.0	38.6	71.8#





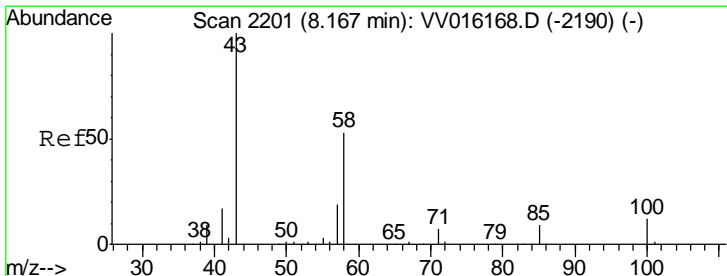
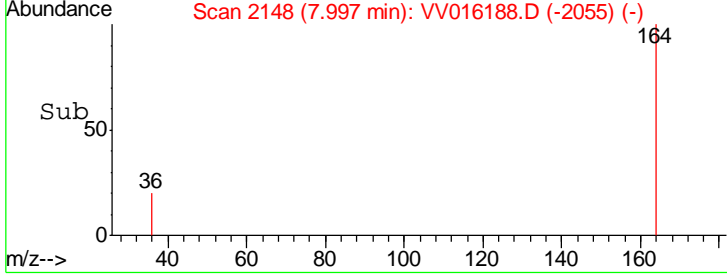
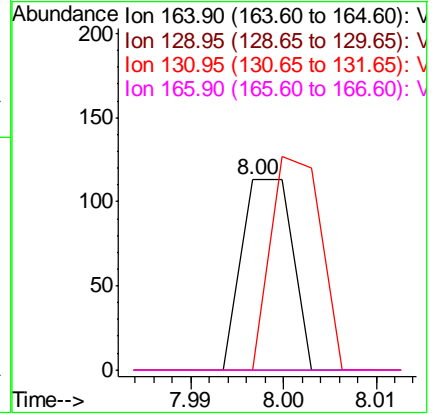
#49
 Tetrachloroethene
 Concen: 5.974 ug/L
 RT: 8.00 min Scan# 2148
 Delta R.T. -0.00 min
 Lab File: VV016188.D
 Acq: 22 May 2020 22:46

Instrument :
 MSVOA_V
 ClientSampled :

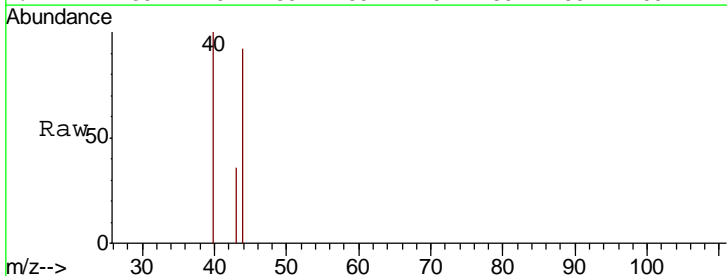


Tgt Ion: 164 Resp: 44

Ion	Ratio	Lower	Upper
164	100		
129	0.0	69.7	129.4#
131	0.0	66.8	124.2#
166	0.0	89.1	165.5#

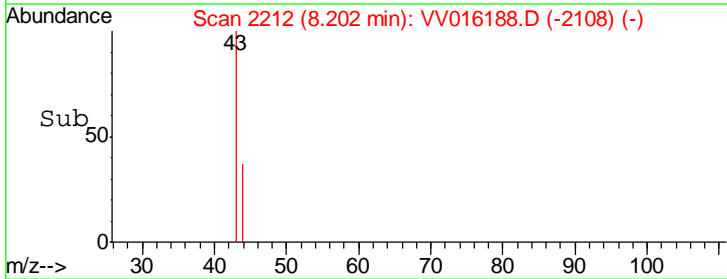
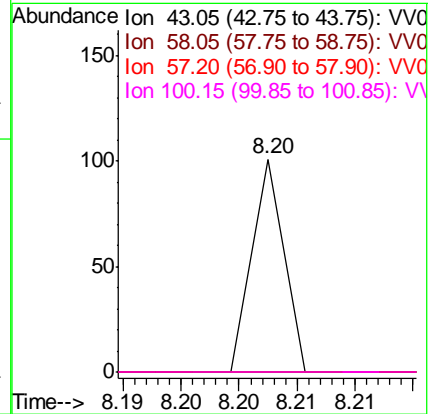


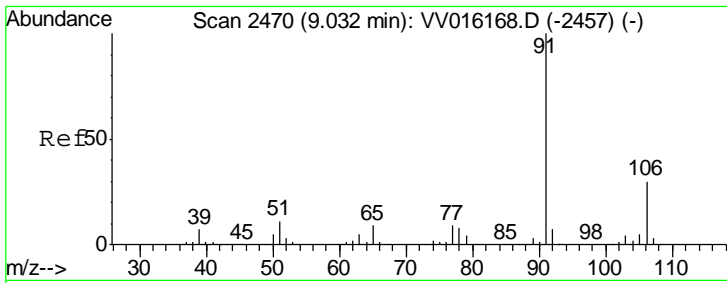
#50
 2-Hexanone
 Concen: 4.588 ug/L
 RT: 8.20 min Scan# 2212
 Delta R.T. 0.04 min
 Lab File: VV016188.D
 Acq: 22 May 2020 22:46



Tgt Ion: 43 Resp: 19

Ion	Ratio	Lower	Upper
43	100		
58	0.0	40.8	61.2#
57	0.0	14.7	22.1#
100	0.0	9.0	13.6#

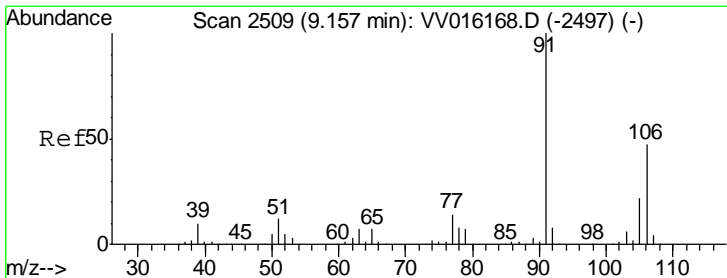
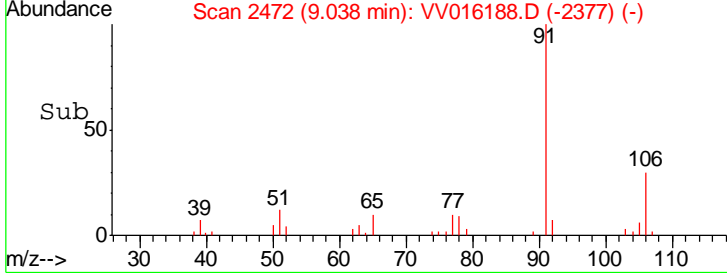
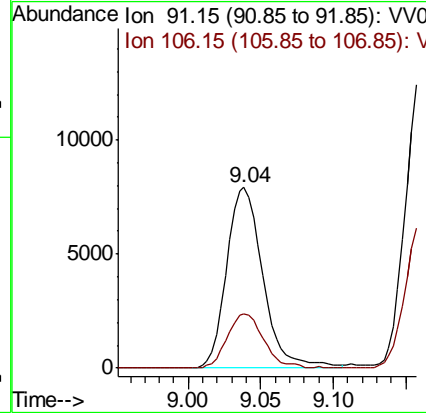
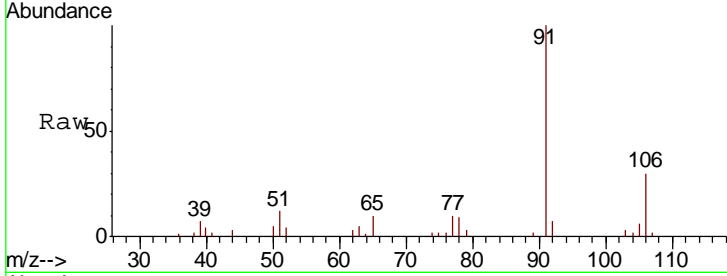




#54
Ethylbenzene
Concen: 310.294 ug/L
RT: 9.04 min Scan# 2472
Delta R.T. 0.01 min
Lab File: VV016188.D
Acq: 22 May 2020 22:46

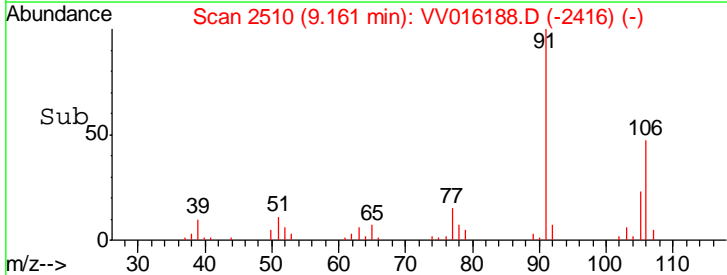
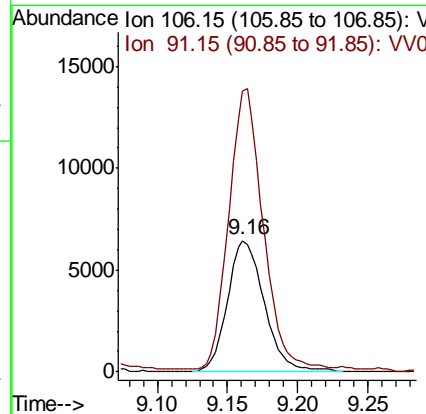
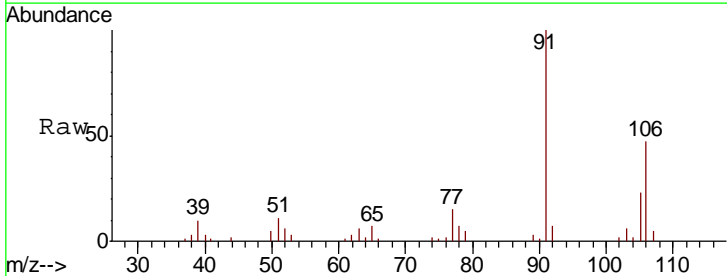
Instrument : MSVOA_V
ClientSampled :

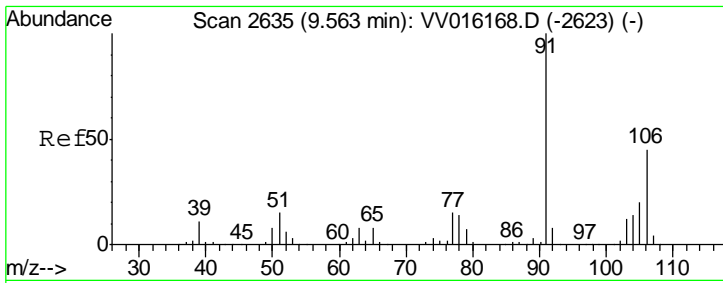
Tgt Ion: 91 Resp: 13832
Ion Ratio Lower Upper
91 100
106 30.4 20.6 38.4



#55
m,p-xylene
Concen: 713.814 ug/L
RT: 9.16 min Scan# 2510
Delta R.T. 0.00 min
Lab File: VV016188.D
Acq: 22 May 2020 22:46

Tgt Ion: 106 Resp: 11782
Ion Ratio Lower Upper
106 100
91 214.0 149.9 278.3

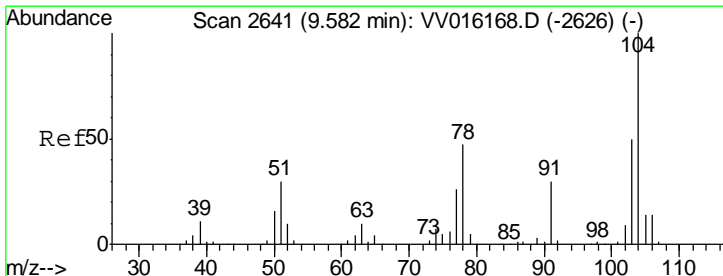
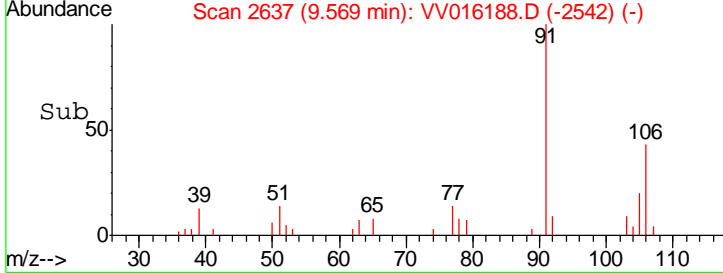
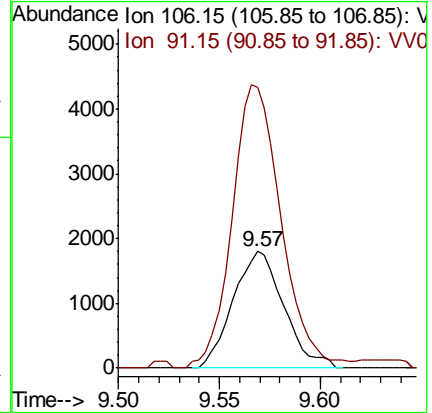
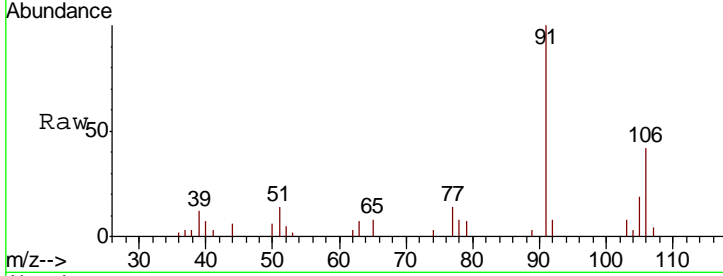




#56
 o-xylene
 Concen: 200.502 ug/L
 RT: 9.57 min Scan# 2637
 Delta R.T. 0.01 min
 Lab File: VV016188.D
 Acq: 22 May 2020 22:46

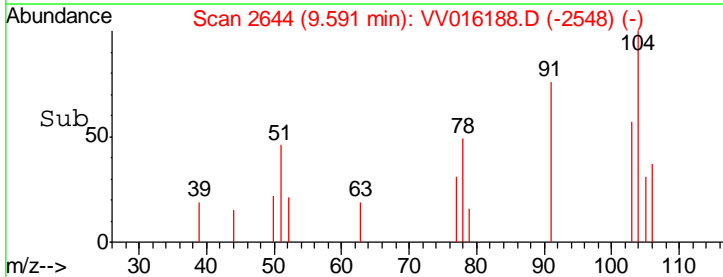
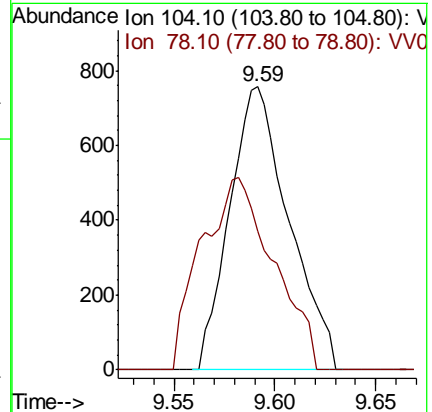
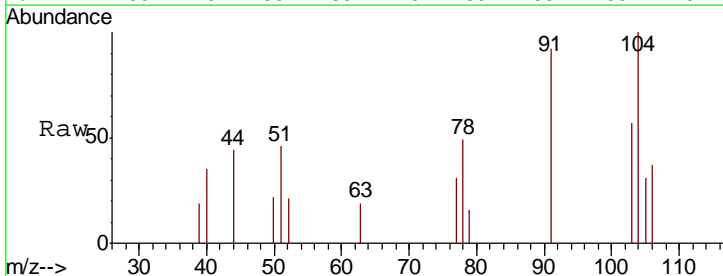
Instrument : MSVOA_V
 ClientSampled :

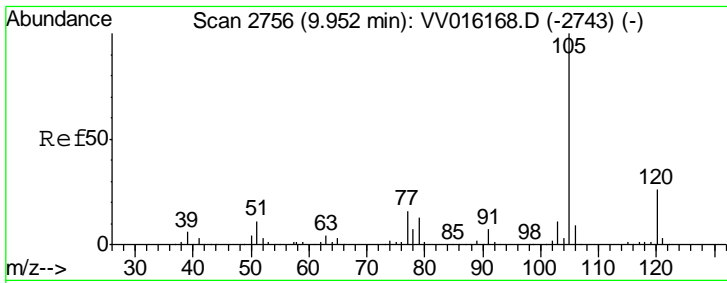
Tgt Ion:106 Resp: 3164
 Ion Ratio Lower Upper
 106 100
 91 240.7 159.7 296.5



#57
 Styrene
 Concen: 58.761 ug/L
 RT: 9.59 min Scan# 2644
 Delta R.T. 0.01 min
 Lab File: VV016188.D
 Acq: 22 May 2020 22:46

Tgt Ion:104 Resp: 1551
 Ion Ratio Lower Upper
 104 100
 78 49.0 33.9 63.0

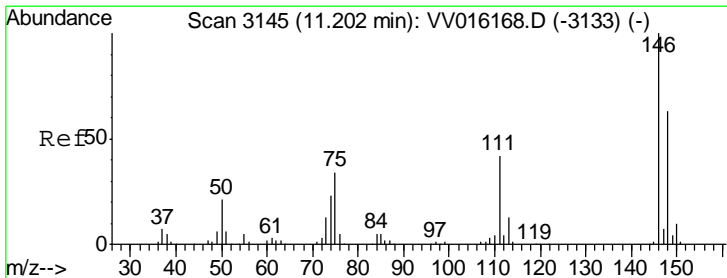
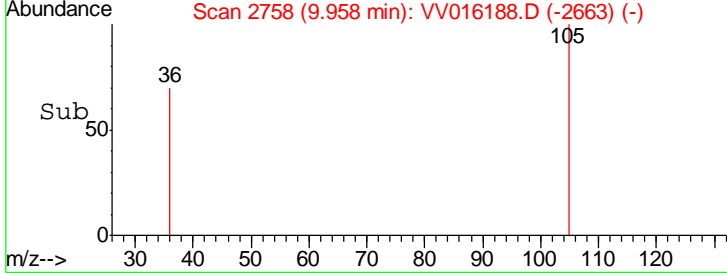
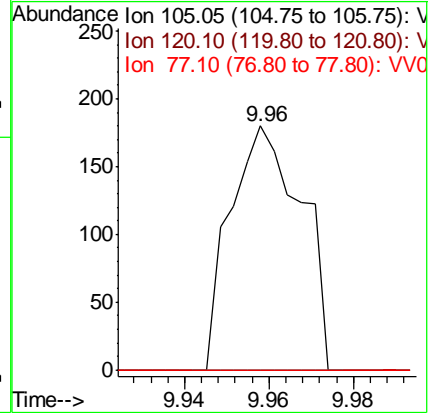
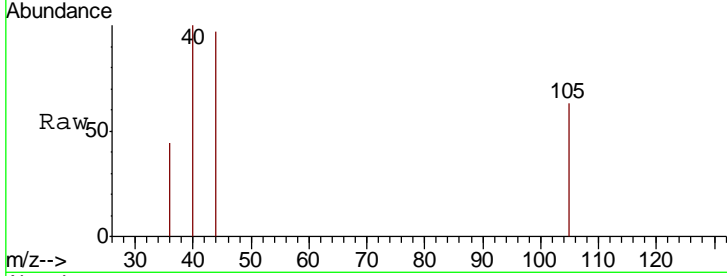




#58
 Isopropylbenzene
 Concen: 4.890 ug/L
 RT: 9.96 min Scan# 2758
 Delta R.T. 0.01 min
 Lab File: VV016188.D
 Acq: 22 May 2020 22:46

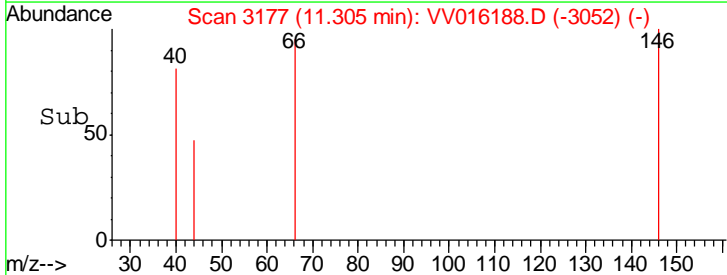
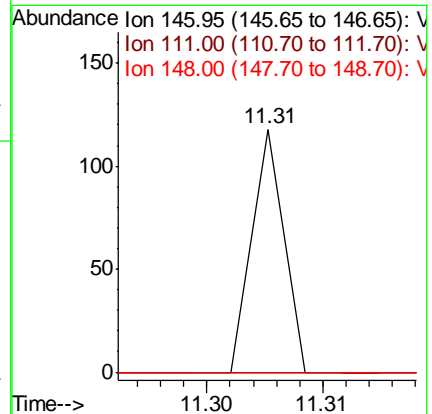
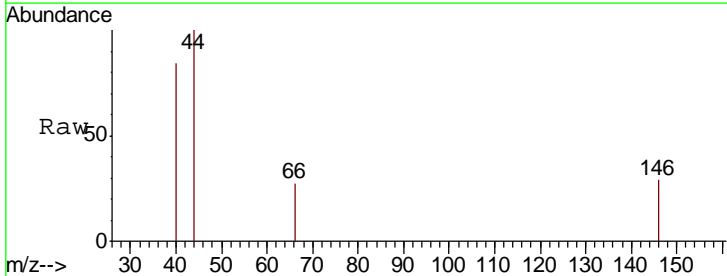
Instrument : MSVOA_V
 ClientSampled :

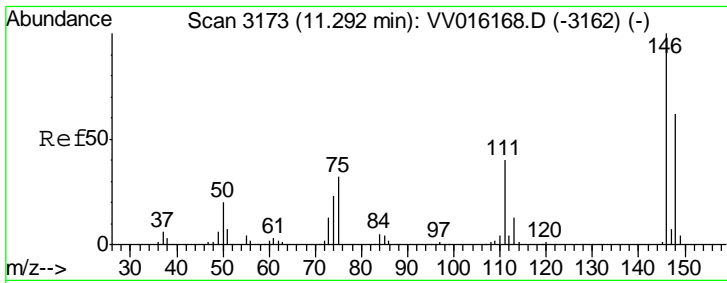
Tgt Ion	Resp	Lower	Upper
105	212		
120	0.0	20.8	31.2#
77	0.0	14.1	21.1#



#63
 1,3-Dichlorobenzene
 Concen: 0.381 ug/L
 RT: 11.31 min Scan# 3177
 Delta R.T. 0.10 min
 Lab File: VV016188.D
 Acq: 22 May 2020 22:46

Tgt Ion	Resp	Lower	Upper
146	23		
111	0.0	28.7	53.3#
148	0.0	44.0	81.8#

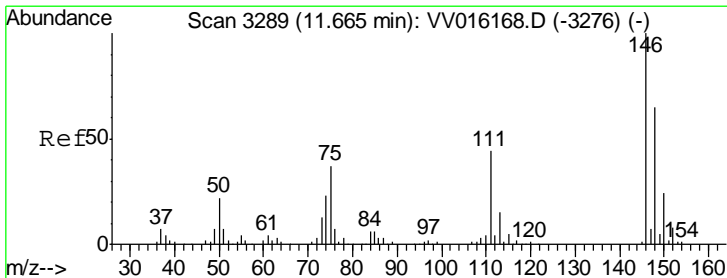
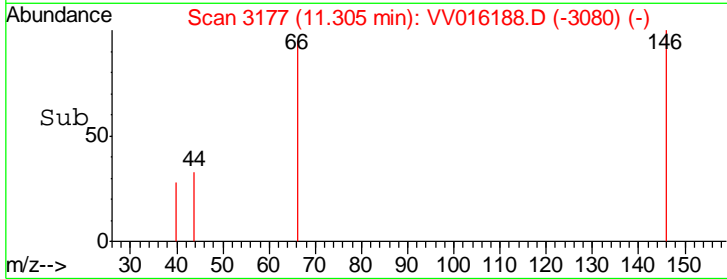
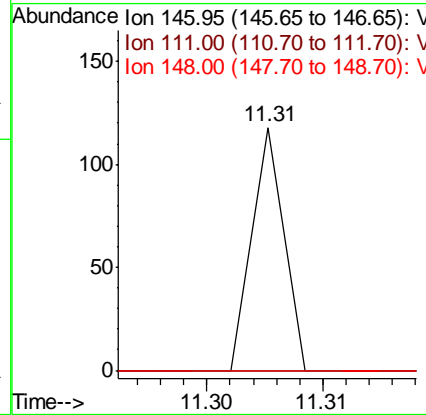
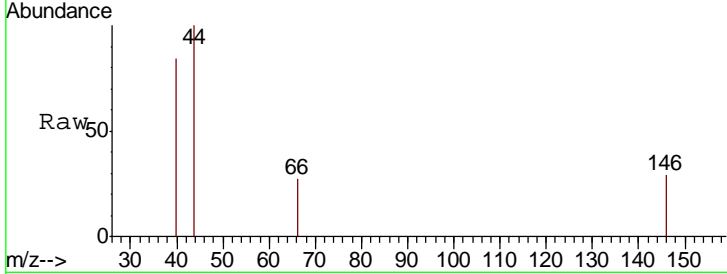




#64
 1,4-Dichlorobenzene
 Concen: 0.379 ug/L
 RT: 11.31 min Scan# 3177
 Delta R.T. 0.01 min
 Lab File: VV016188.D
 Acq: 22 May 2020 22:46

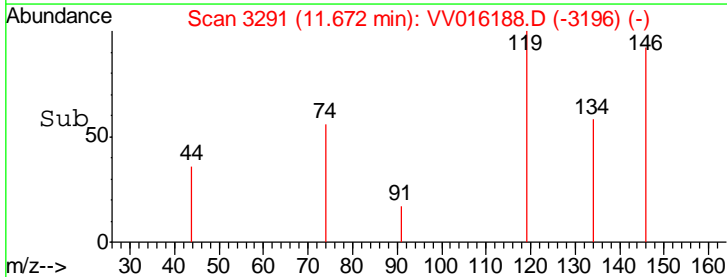
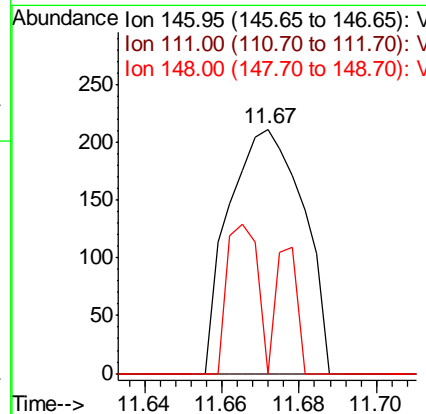
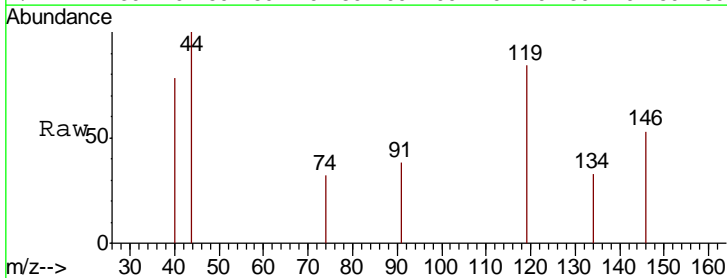
Instrument :
 MSVOA_V
 ClientSampled :

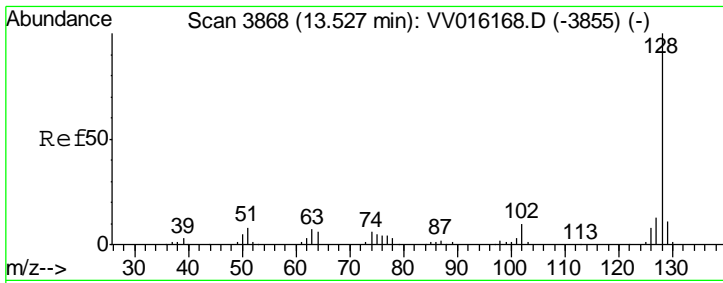
Tgt Ion	Resp	Lower	Upper
146	100		
111	0.0	28.9	53.7#
148	0.0	44.6	82.8#



#66
 1,2-Dichlorobenzene
 Concen: 5.163 ug/L
 RT: 11.67 min Scan# 3291
 Delta R.T. 0.01 min
 Lab File: VV016188.D
 Acq: 22 May 2020 22:46

Tgt Ion	Resp	Lower	Upper
146	100		
111	0.0	37.0	55.4#
148	0.0	49.8	74.6#





#70
 Naphthalene
 Concen: 3359.794 ug/L
 RT: 13.53 min Scan# 3868
 Delta R.T. -0.00 min
 Lab File: VV016188.D
 Acq: 22 May 2020 22:46

Instrument : MSVOA_V
 ClientSampled :

Tot Ion: 128 Resp: 202595

Ion	Ratio	Lower	Upper
128	100		
129	11.0	8.5	12.7
127	12.6	10.2	15.2

