

Data Path : Z:\voasrv\HPCHEM1\MSVOA_V\Data\VV052521\
 Data File : VV021395.D
 Acq On : 25 May 2021 18:01
 Operator : SY/MD
 Sample : M2496-14
 Misc : 25.0mL/MSVOA_V/WATER
 ALS Vial : 17 Sample Multiplier: 1

Instrument :
 MSVOA_V
 ClientSampleId :
 GB445

Integration Parameters: rteint.p
 Integrator: RTE
 Smoothing : ON Filtering: 5
 Sampling : 1 Min Area: 3 % of largest Peak
 Start Thrs: 0.1 Max Peaks: 100
 Stop Thrs : 0 Peak Location: TOP

If leading or trailing edge < 100 prefer < Baseline drop else tangent >
 Peak separation: 5

Method : Z:\voasrv\HPCHEM1\MSVOA_V\Method\SFAMVTR052521WMA.M
 Title : TRACE VOA SFAM1.0

Signal : TIC: VV021395.D\data.ms

peak #	R.T. min	first scan	max scan	last scan	PK TY	peak height	corr. area	corr. % max.	% of total
1	1.256	64	67	73	rVB	13216	9352	1.04%	0.127%
2	1.304	75	82	92	rVB	103084	101825	11.34%	1.379%
3	1.564	156	163	176	rBV	92491	104243	11.61%	1.412%
4	2.105	321	331	342	rBV	161553	229301	25.53%	3.106%
5	2.506	446	456	471	rVB2	12742	22245	2.48%	0.301%
6	3.918	882	895	956	rBV	63790	358814	39.96%	4.860%
7	4.352	1013	1030	1058	rBV2	137067	344730	38.39%	4.669%
8	5.050	1231	1247	1278	rBV2	330531	819361	91.24%	11.097%
9	5.619	1407	1424	1451	rBV	268799	549075	61.14%	7.436%
10	6.072	1551	1565	1591	rBV	187165	391248	43.57%	5.299%
11	6.992	1840	1851	1874	rBV	94270	178765	19.91%	2.421%
12	7.320	1940	1953	1971	rBV	405171	708026	78.84%	9.589%
13	7.400	1972	1978	1993	rVB2	9426	18418	2.05%	0.249%
14	7.628	2039	2049	2075	rBV	55141	104091	11.59%	1.410%
15	7.944	2135	2147	2157	rBV2	21067	38223	4.26%	0.518%
16	8.091	2181	2193	2231	rBV	470064	898012	100.00%	12.162%
17	8.853	2418	2430	2462	rBV	397096	671623	74.79%	9.096%
18	10.217	2843	2854	2873	rBV	154354	247313	27.54%	3.349%
19	10.384	2895	2906	2919	rVB2	32544	54164	6.03%	0.734%
20	11.152	3137	3145	3160	rBV2	15937	24968	2.78%	0.338%
21	11.249	3164	3175	3195	rBV	448469	691929	77.05%	9.371%
22	11.625	3280	3292	3309	rBV	424035	667254	74.30%	9.037%
23	12.252	3473	3487	3499	rBV	8890	16031	1.79%	0.217%
24	12.345	3504	3516	3533	rBV	62611	99442	11.07%	1.347%
25	13.435	3844	3855	3866	rBV3	21971	35206	3.92%	0.477%

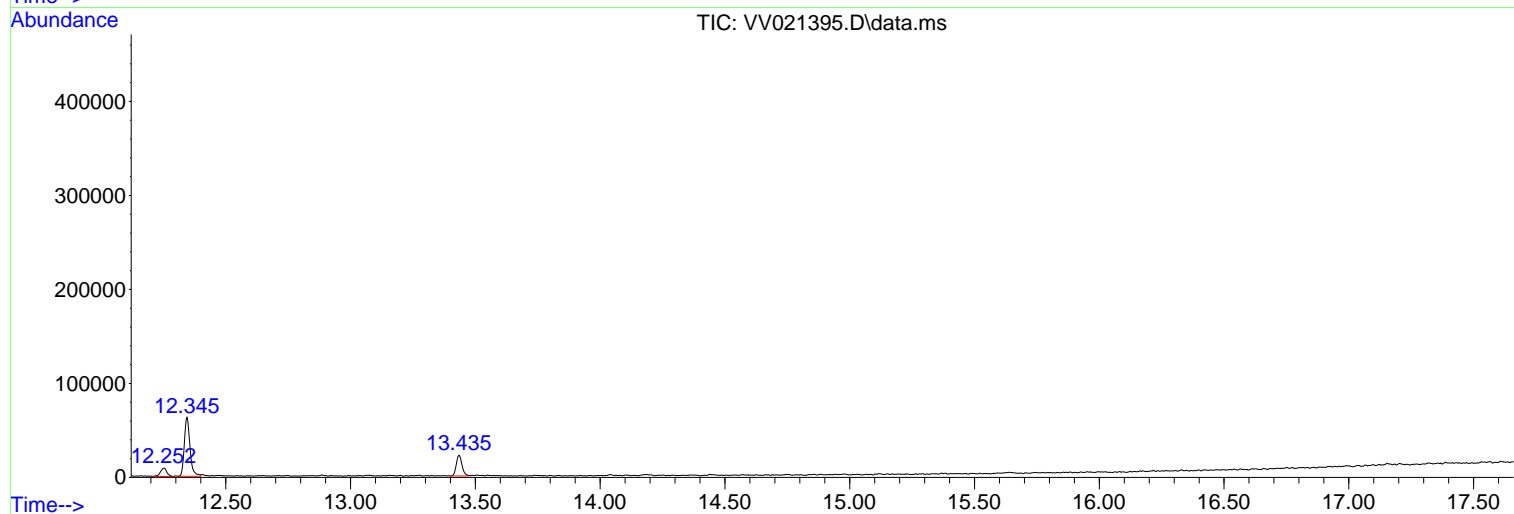
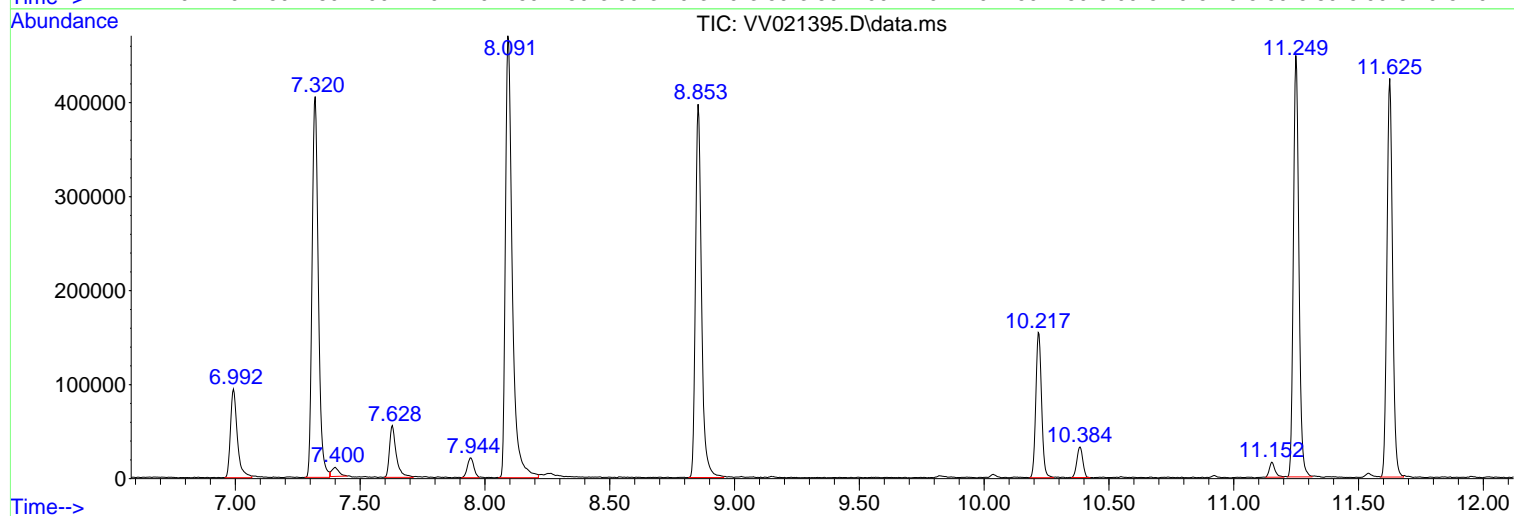
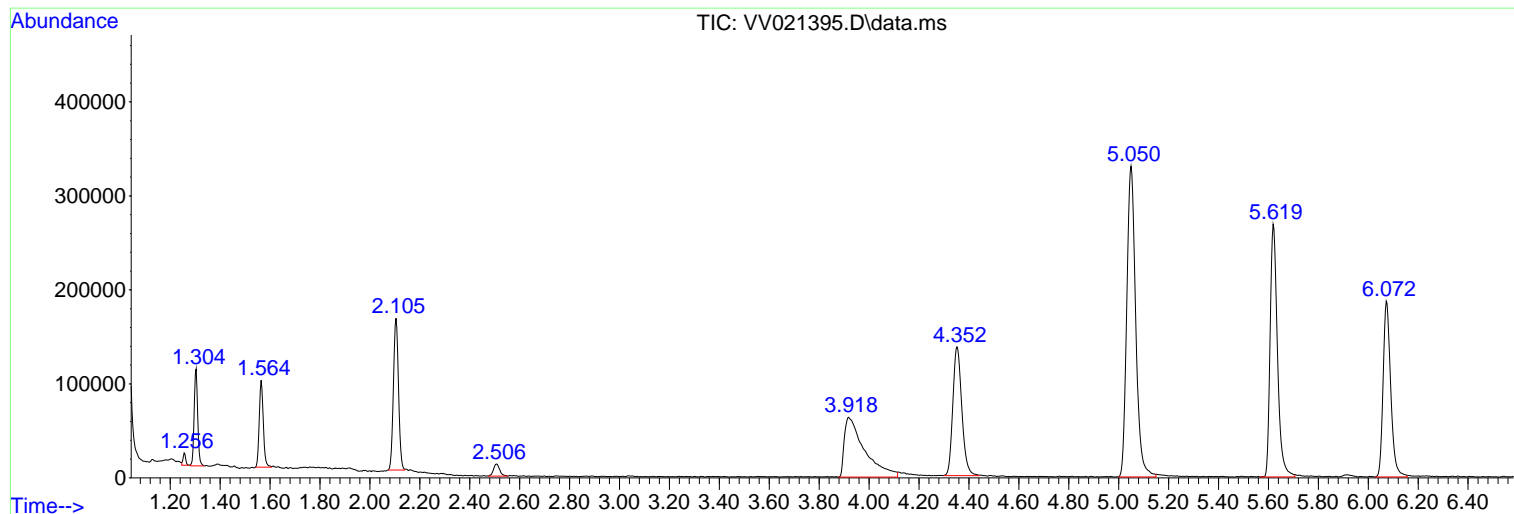
Sum of corrected areas: 7383659

Data Path : Z:\voasrv\HPCHEM1\MSVOA_V\Data\VV052521\
Data File : VV021395.D
Acq On : 25 May 2021 18:01
Operator : SY/MD
Sample : M2496-14
Misc : 25.0mL/MSVOA_V/WATER
ALS Vial : 17 Sample Multiplier: 1

Instrument :
MSVOA_V
ClientSampleId :
GB445

Quant Method : Z:\voasrv\HPCHEM1\MSVOA_V\Method\SFAMVTR052521WMA.M
Quant Title : TRACE VOA SFAM1.0

TIC Library : C:\DATABASE\NIST11.L
TIC Integration Parameters: LSCINT.P



Data Path : Z:\voasrv\HPCHEM1\MSVOA_V\Data\VV052521\
 Data File : VV021395.D
 Acq On : 25 May 2021 18:01
 Operator : SY/MD
 Sample : M2496-14
 Misc : 25.0mL/MSVOA_V/WATER
 ALS Vial : 17 Sample Multiplier: 1

Instrument :
 MSVOA_V
 ClientSampleId :
 GB445

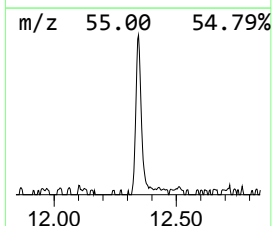
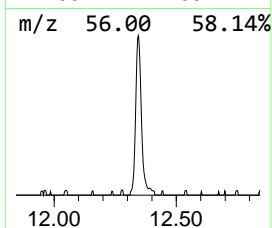
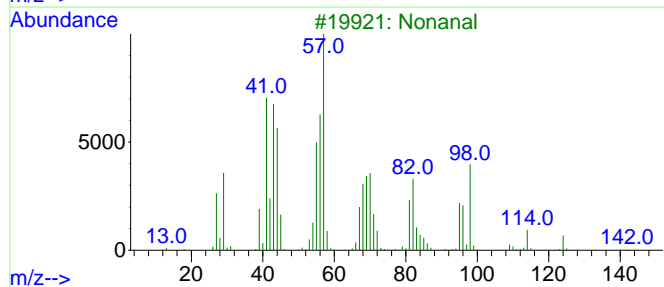
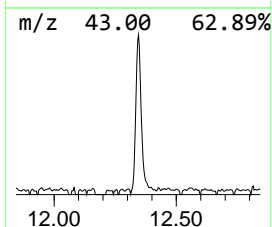
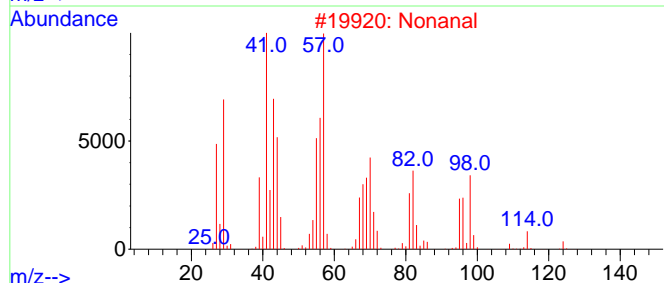
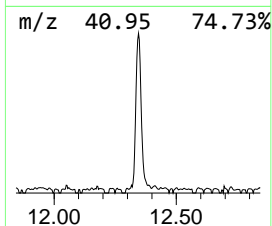
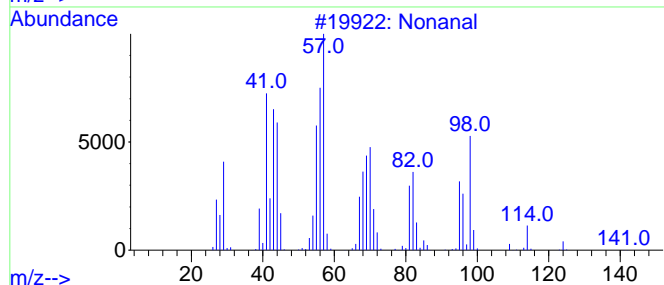
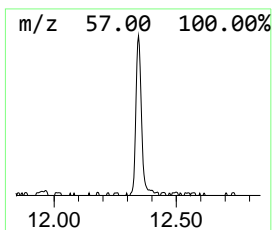
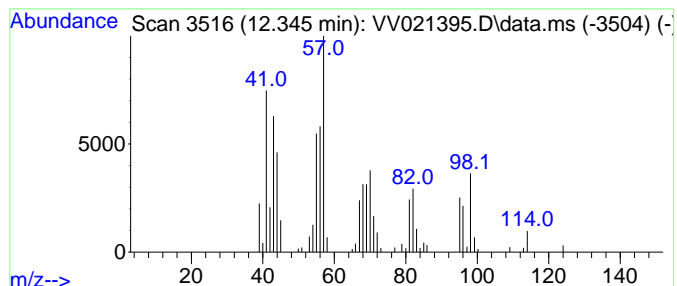
Quant Method : Z:\voasrv\HPCHEM1\MSVOA_V\Method\SFAMVTR052521WMA.M
 Quant Title : TRACE VOA SFAM1.0

TIC Library : C:\DATABASE\NIST11.L
 TIC Integration Parameters: LSCINT.P

 Peak Number 2 Nonanal Concentration Rank 2

R.T.	EstConc	Area	Relative to ISTD	R.T.
12.345	0.72 ug/L	99442	1,4-Dichlorobenzene-d4	11.249

Hit#	of	5	Tentative ID	MW	MolForm	CAS#	Qual
1			Nonanal	142	C9H18O	000124-19-6	91
2			Nonanal	142	C9H18O	000124-19-6	91
3			Nonanal	142	C9H18O	000124-19-6	91
4			Nonanal	142	C9H18O	000124-19-6	86
5			Cyclohexane, methyl-	98	C7H14	000108-87-2	43



Data Path : Z:\voasrv\HPCHEM1\MSVOA_V\Data\VV052521\
Data File : VV021395.D
Acq On : 25 May 2021 18:01
Operator : SY/MD
Sample : M2496-14
Misc : 25.0mL/MSVOA_V/WATER
ALS Vial : 17 Sample Multiplier: 1

Instrument :
MSVOA_V
ClientSampled :
GB445

Quant Method : Z:\voasrv\HPCHEM1\MSVOA_V\Method\SFAMVTR052521WMA.M
Quant Title : TRACE VOA SFAM1.0

TIC Library : C:\DATABASE\NIST11.L
TIC Integration Parameters: LSCINT.P

TIC Top Hit name	RT	EstConc	Units	Response	--Internal Standard--			
					#	RT	Resp	Conc
Nonanal	12.345	0.7	ug/L	99442	3	11.249	691929	5.0