

Data Path : Z:\VOASRV\HPCHEM1\MSVOA V\DATA\VV052720\
 Data File : VV016255.D
 Acq On : 28 May 2020 02:36
 Operator : SY/MD
 Sample : L2766-14
 Misc : 25.0mL/MSVOA V/WATER
 ALS Vial : 43 Sample Multiplier: 1

Instrument :
 MSVOA_V
 ClientSampled :

Quant Time: May 28 06:37:27 2020
 Quant Method : Z:\VOASRV\HPCHEM1\MSVOA_V\METHOD\SOMVTR052620WMA.M
 Quant Title : TRACE VOA SOM01.0
 QLast Update : Thu May 28 06:30:54 2020
 Response via : Initial Calibration

Internal Standards	R.T.	QIon	Response	Conc	Units	Dev(Min)
1) 1,4-Difluorobenzene	5.64	114	101790	5.00	ug/L	0.00
28) Chlorobenzene-d5	8.87	117	96677	5.00	ug/L	0.00
61) 1,4-Dichlorobenzene-d4	11.27	152	44614	5.00	ug/L	0.00

System Monitoring Compounds

4) Vinyl Chloride-d3	1.32	65	25500	3.90	ug/L	0.00
Spiked Amount	5.000	Range	40 - 130	Recovery	=	78.00%
7) Chloroethane-d5	1.58	69	24493	4.26	ug/L	0.00
Spiked Amount	5.000	Range	65 - 130	Recovery	=	85.20%
11) 1,1-Dichloroethene-d2	2.13	63	39310	3.20	ug/L	0.00
Spiked Amount	5.000	Range	60 - 125	Recovery	=	64.00%
20) 2-Butanone-d5	3.94	46	85952	53.00	ug/L	0.00
Spiked Amount	50.000	Range	40 - 130	Recovery	=	106.00%
24) Chloroform-d	4.38	84	58223	4.47	ug/L	0.00
Spiked Amount	5.000	Range	70 - 125	Recovery	=	89.40%
26) 1,2-Dichloroethane-d4	5.06	65	32793	4.76	ug/L	0.00
Spiked Amount	5.000	Range	70 - 130	Recovery	=	95.20%
32) Benzene-d6	5.08	84	114513	4.78	ug/L	0.00
Spiked Amount	5.000	Range	70 - 125	Recovery	=	95.60%
36) 1,2-Dichloropropane-d6	6.10	67	36124	4.88	ug/L	0.00
Spiked Amount	5.000	Range	60 - 140	Recovery	=	97.60%
41) Toluene-d8	7.34	98	104952	4.60	ug/L	0.00
Spiked Amount	5.000	Range	70 - 130	Recovery	=	92.00%
45) trans-1,3-Dichloropropene-	7.64	79	11900	4.31	ug/L	0.00
Spiked Amount	5.000	Range	55 - 130	Recovery	=	86.20%
48) 2-Hexanone-d5	8.12	63	64739	51.11	ug/L	0.00
Spiked Amount	50.000	Range	45 - 130	Recovery	=	102.22%
59) 1,1,2,2-Tetrachloroethane-	10.24	84	25893	4.73	ug/L	0.00
Spiked Amount	5.000	Range	65 - 120	Recovery	=	94.60%
65) 1,2-Dichlorobenzene-d4	11.65	152	37089	4.98	ug/L	0.00
Spiked Amount	5.000	Range	80 - 120	Recovery	=	99.60%

Target Compounds

Target Compounds	R.T.	QIon	Response	Conc	Units	Ovalue
8) Chloroethane	1.44	64	12615	2.533	ug/L #	50
13) Acetone	2.22	43	5146	5.127	ug/L	85
22) cis-1,2-Dichloroethene	3.95	96	1146	0.147	ug/L	75
33) Benzene	5.13	78	19803	0.712	ug/L	100
35) Methylcyclohexane	6.10	83	9347	0.765	ug/L #	17
37) 1,2-Dichloropropane	6.10	63	4324	0.634	ug/L #	88
39) cis-1,3-Dichloropropene	7.01	75	1054	0.109	ug/L	87
42) Toluene	7.41	91	29235	0.964	ug/L	96
44) 1,2,4-Trimethylbenzene	10.94	105	1995	0.070	ug/L	100
46) trans-1,3-Dichloropropene	7.65	75	526	0.066	ug/L #	62
50) 2-Hexanone	8.12	43	8165	2.758	ug/L #	74
53) Chlorobenzene	8.90	112	13604	0.726	ug/L	96
54) Ethylbenzene	9.04	91	8857	0.262	ug/L	98
55) m,p-xylene	9.16	106	8955	0.706	ug/L	95
56) o-xylene	9.57	106	1539	0.127	ug/L	90
64) 1,4-Dichlorobenzene	11.30	146	2548	0.184	ug/L	92
66) 1,2-Dichlorobenzene	11.67	146	1083	0.088	ug/L	96

Data Path : Z:\VOASRV\HPCHEM1\MSVOA V\DATA\VV052720\
 Data File : VV016255.D
 Acq On : 28 May 2020 02:36
 Operator : SY/MD
 Sample : L2766-14
 Misc : 25.0mL/MSVOA V/WATER
 ALS Vial : 43 Sample Multiplier: 1

Instrument :
 MSVOA_V
 ClientSampleId :

Quant Time: May 28 06:37:27 2020
 Quant Method : Z:\VOASRV\HPCHEM1\MSVOA_V\METHOD\SOMVTR052620WMA.M
 Quant Title : TRACE VOA SOM01.0
 QLast Update : Thu May 28 06:30:54 2020
 Response via : Initial Calibration

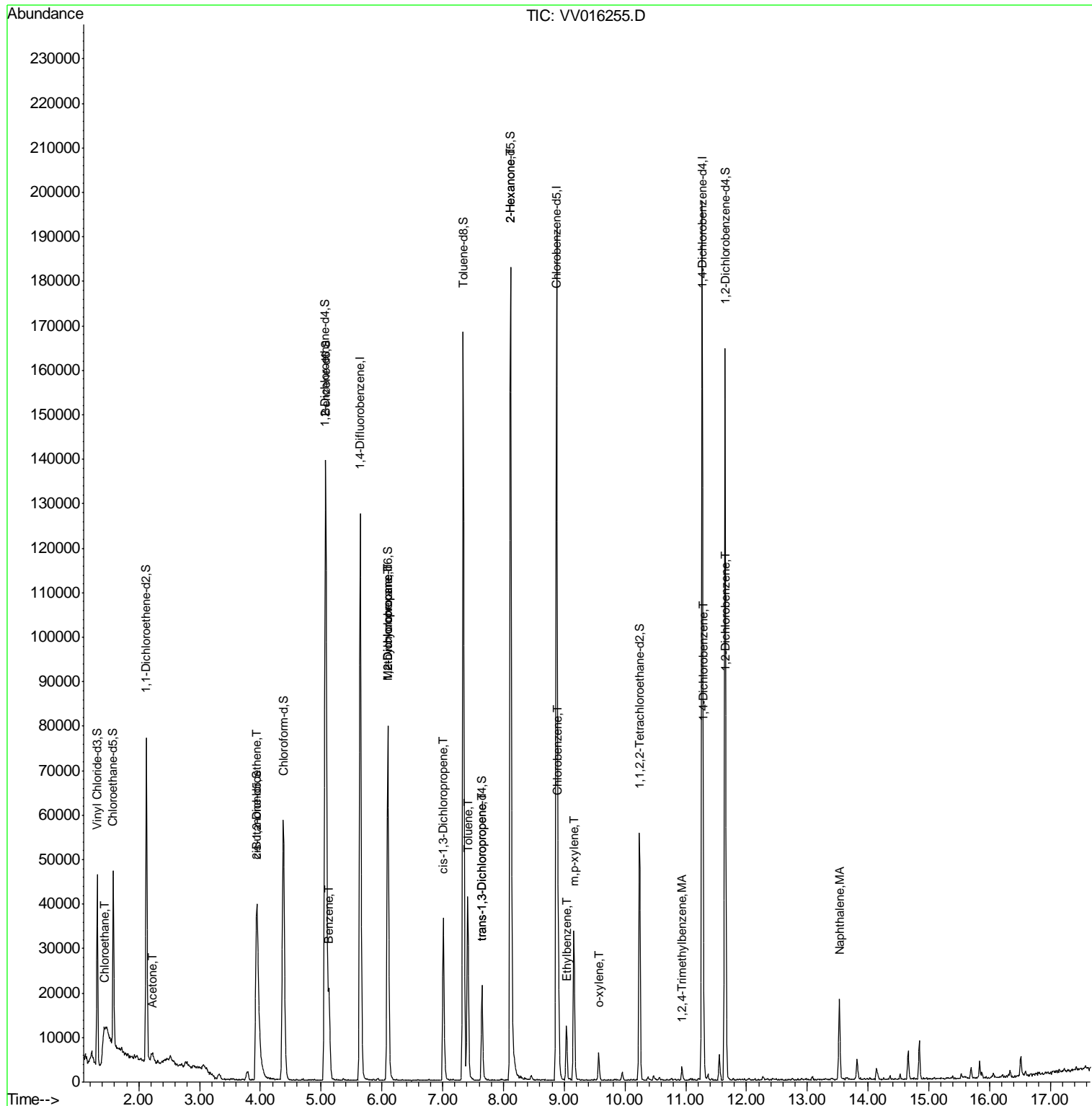
Internal Standards	R.T.	QIon	Response	Conc	Units	Dev(Min)
70) Naphthalene	13.53	128	14187	0.768	ug/L	99

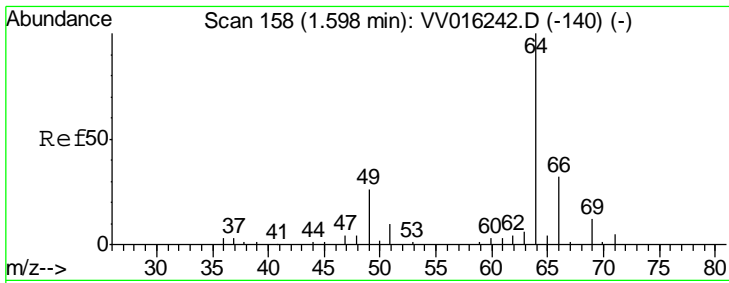
(#) = qualifier out of range (m) = manual integration (+) = signals summed

Data Path : Z:\VOASRV\HPCHEM1\MSVOA V\DATA\VV052720\
 Data File : VV016255.D
 Acq On : 28 May 2020 02:36
 Operator : SY/MD
 Sample : L2766-14
 Misc : 25.0mL/MSVOA V/WATER
 ALS Vial : 43 Sample Multiplier: 1

Instrument :
 MSVOA_V
 ClientSampled :

Quant Time: May 28 06:37:27 2020
 Quant Method : Z:\VOASRV\HPCHEM1\MSVOA_V\METHOD\SOMVTR052620WMA.M
 Quant Title : TRACE VOA SOM01.0
 QLast Update : Thu May 28 06:30:54 2020
 Response via : Initial Calibration

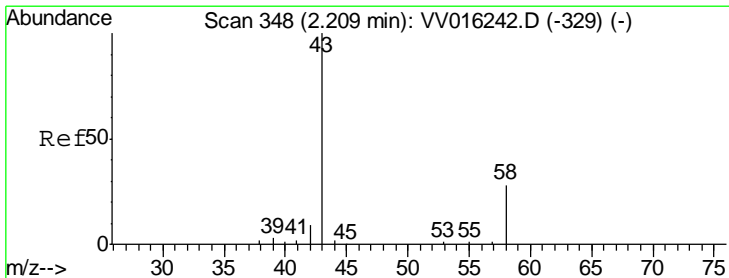
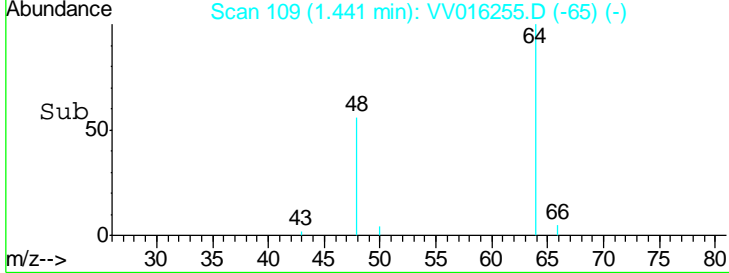
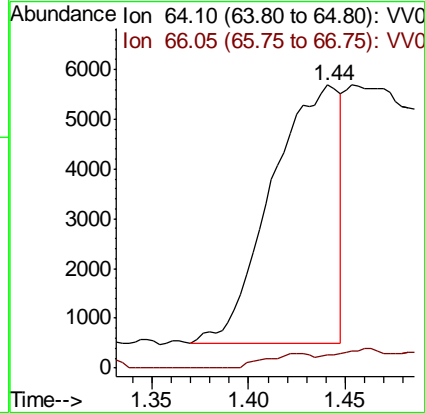
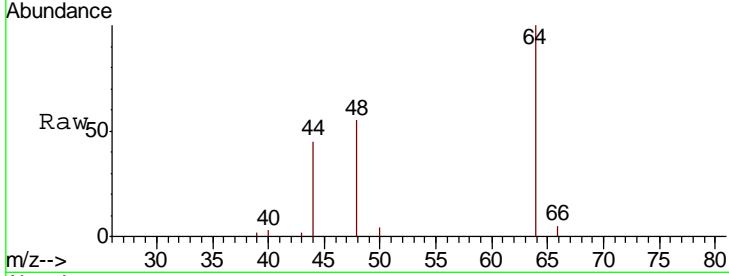




#8
 Chloroethane
 Concen: 2.533 ug/L
 RT: 1.44 min Scan# 109
 Delta R.T. -0.16 min
 Lab File: VV016255.D
 Acq: 28 May 2020 02:36

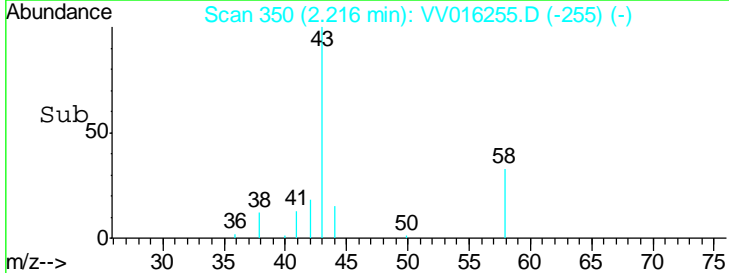
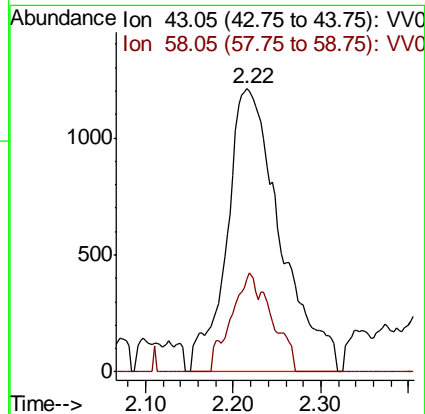
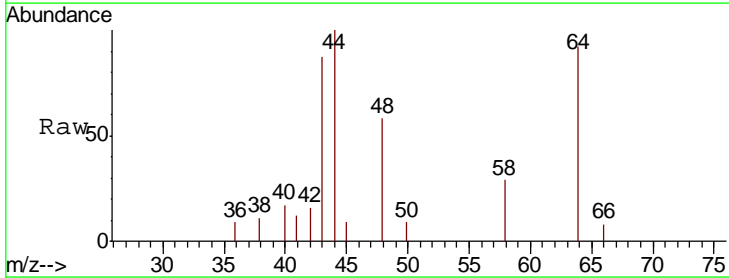
Instrument : MSVOA_V
 ClientSampled :

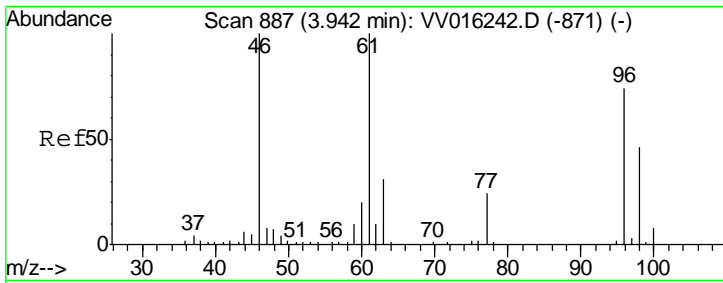
Tgt Ion	Resp	Lower	Upper
64	12615		
66	4.5	22.9	42.5#



#13
 Acetone
 Concen: 5.127 ug/L
 RT: 2.22 min Scan# 350
 Delta R.T. 0.01 min
 Lab File: VV016255.D
 Acq: 28 May 2020 02:36

Tgt Ion	Resp	Lower	Upper
43	5146		
58	16.8	0.0	48.8

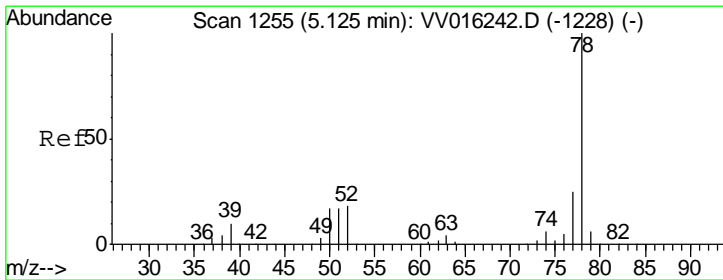
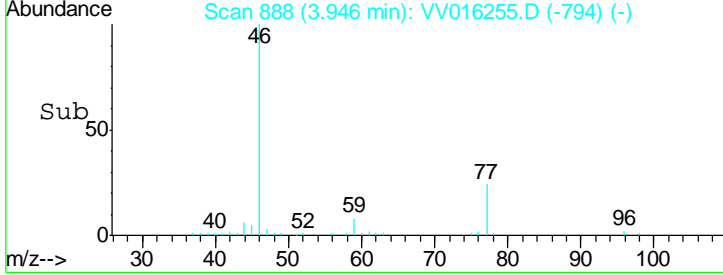
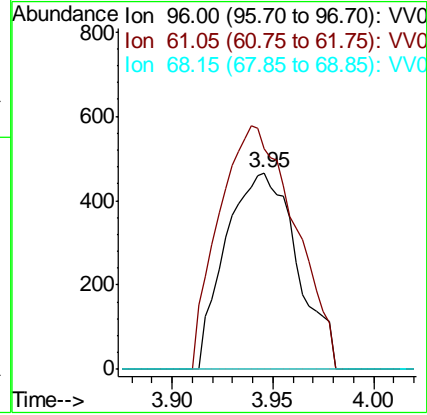
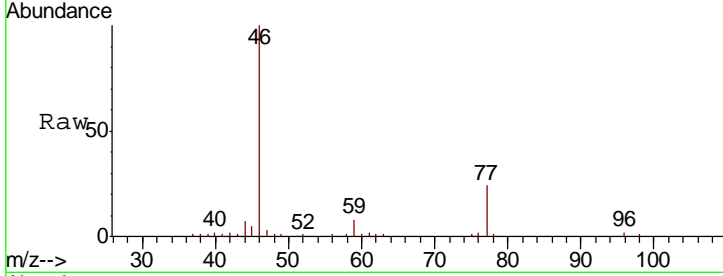




#22
 cis-1,2-Dichloroethene
 Concen: 0.147 ug/L
 RT: 3.95 min Scan# 888
 Delta R.T. 0.00 min
 Lab File: VV016255.D
 Acq: 28 May 2020 02:36

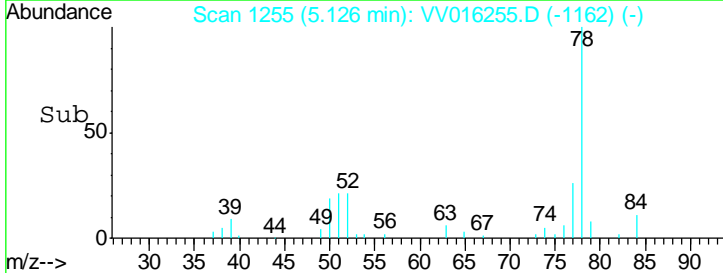
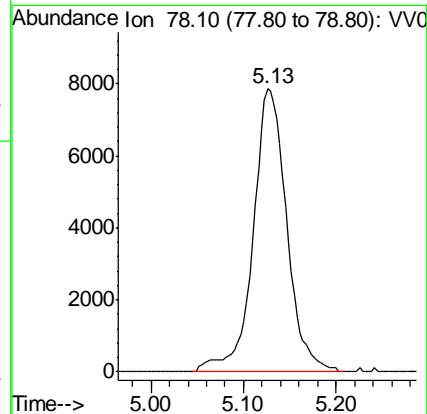
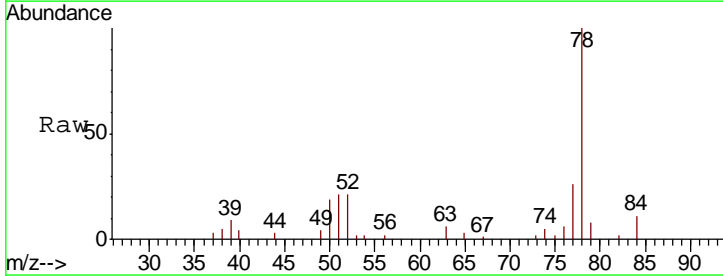
Instrument :
 MSVOA_V
 ClientSampled :

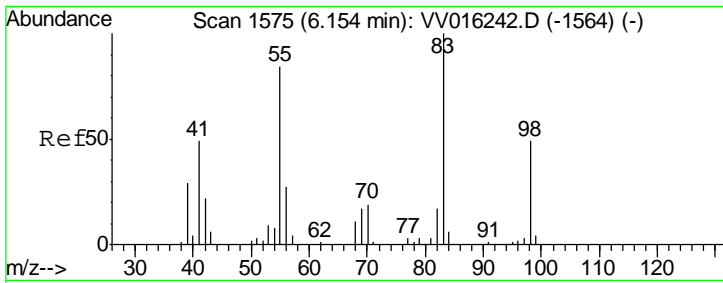
Tgt Ion	Resp	Lower	Upper
96	1146		
61	112.2	99.7	185.1
68	0.0	0.0	0.0



#33
 Benzene
 Concen: 0.712 ug/L
 RT: 5.13 min Scan# 1255
 Delta R.T. 0.00 min
 Lab File: VV016255.D
 Acq: 28 May 2020 02:36

Tgt Ion: 78 Resp: 19803

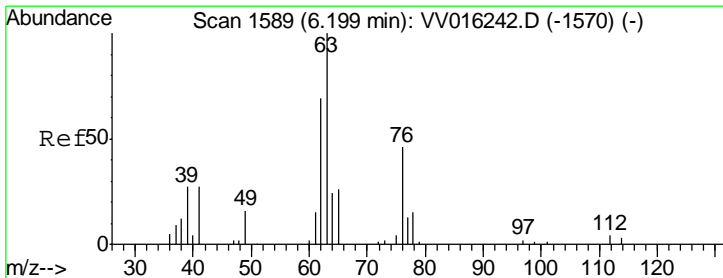
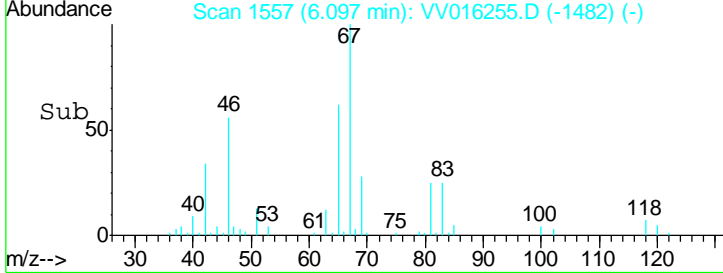
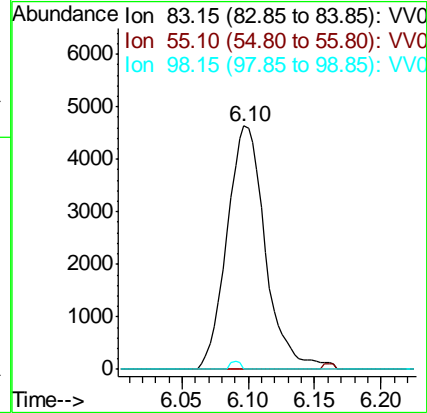
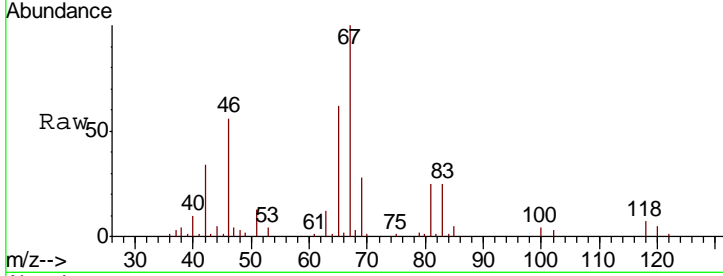




#35
 Methylcyclohexane
 Concen: 0.765 ug/L
 RT: 6.10 min Scan# 1557
 Delta R.T. -0.06 min
 Lab File: VV016255.D
 Acq: 28 May 2020 02:36

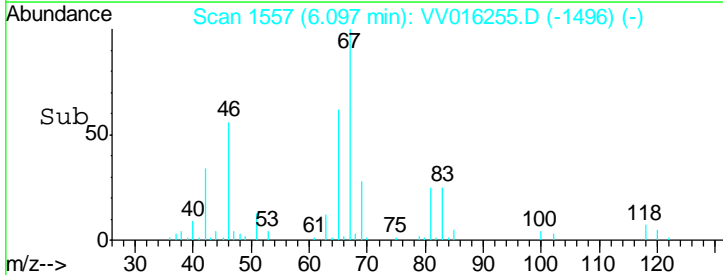
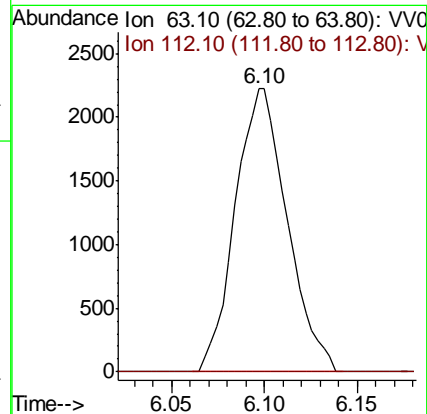
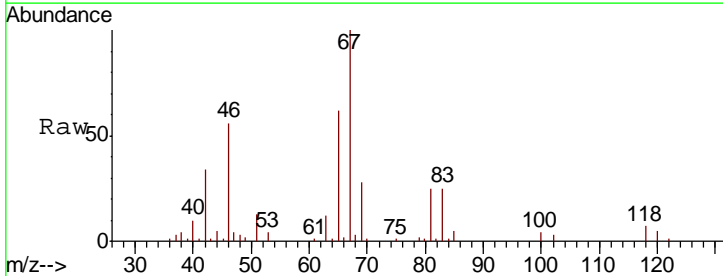
Instrument :
 MSVOA_V
 ClientSampled :

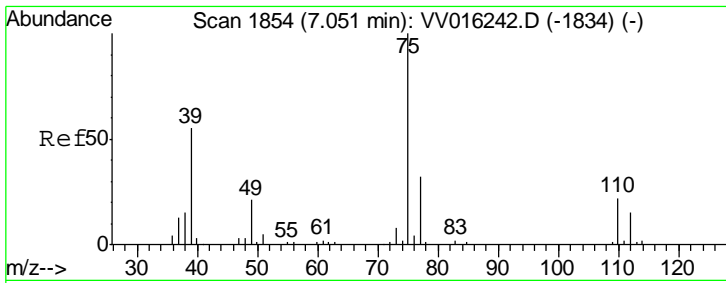
Tgt Ion	Resp	Lower	Upper
83	9347		
55	0.7	65.4	98.0#
98	0.8	39.3	58.9#



#37
 1,2-Dichloropropane
 Concen: 0.634 ug/L
 RT: 6.10 min Scan# 1557
 Delta R.T. -0.10 min
 Lab File: VV016255.D
 Acq: 28 May 2020 02:36

Tgt Ion	Resp	Lower	Upper
63	4324		
112	0.0	3.1	4.7#

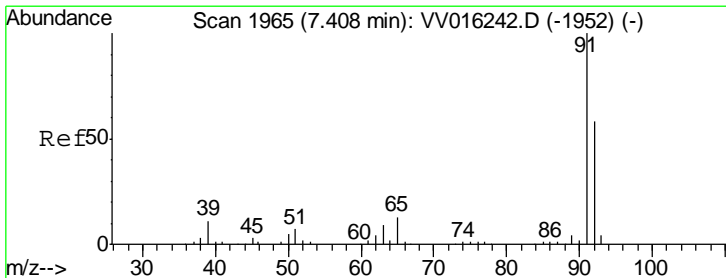
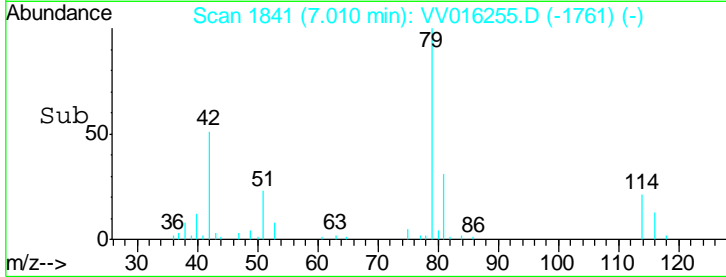
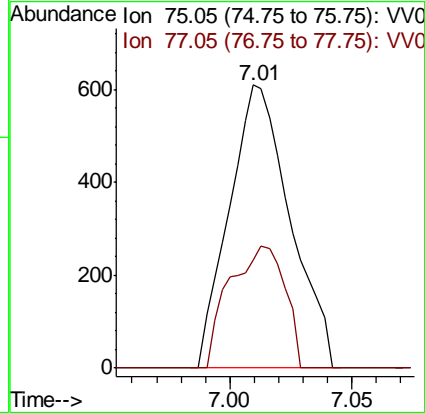
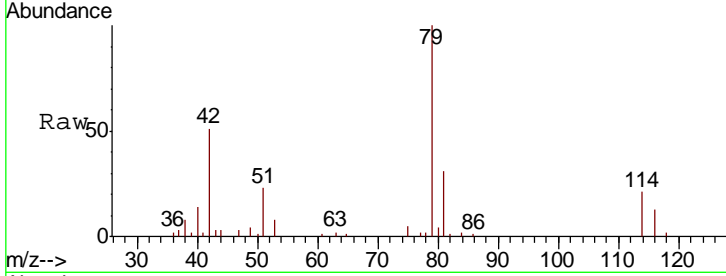




#39
 cis-1,3-Dichloropropene
 Concen: 0.109 ug/L
 RT: 7.01 min Scan# 1841
 Delta R.T. -0.04 min
 Lab File: VV016255.D
 Acq: 28 May 2020 02:36

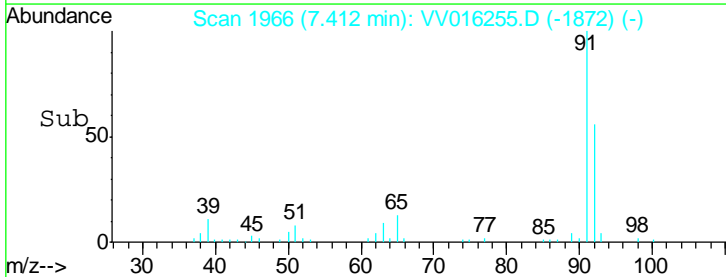
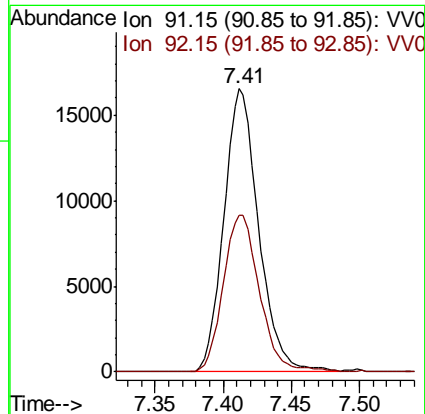
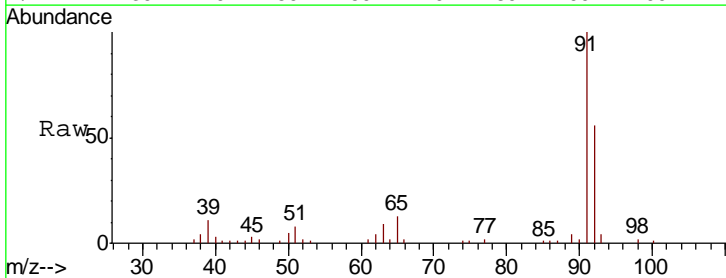
Instrument :
 MSVOA_V
 ClientSampled :

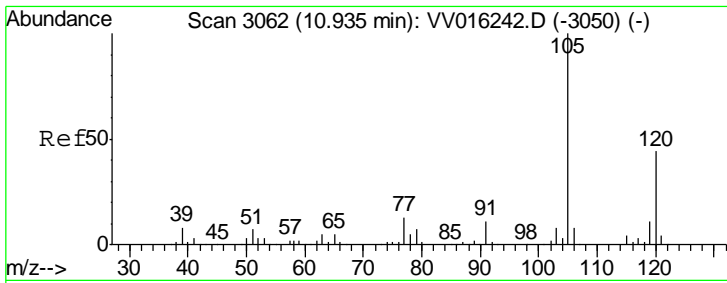
Tgt Ion: 75 Resp: 1054
 Ion Ratio Lower Upper
 75 100
 77 38.3 21.7 40.3



#42
 Toluene
 Concen: 0.964 ug/L
 RT: 7.41 min Scan# 1966
 Delta R.T. 0.00 min
 Lab File: VV016255.D
 Acq: 28 May 2020 02:36

Tgt Ion: 91 Resp: 29235
 Ion Ratio Lower Upper
 91 100
 92 55.5 40.9 76.0

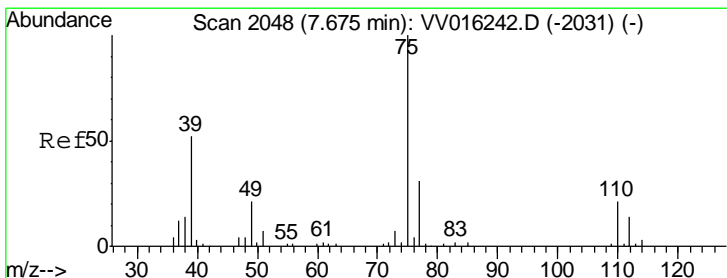
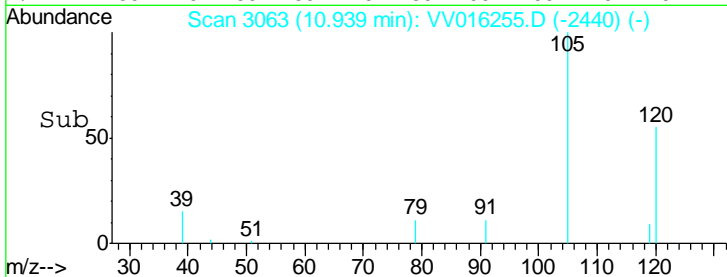
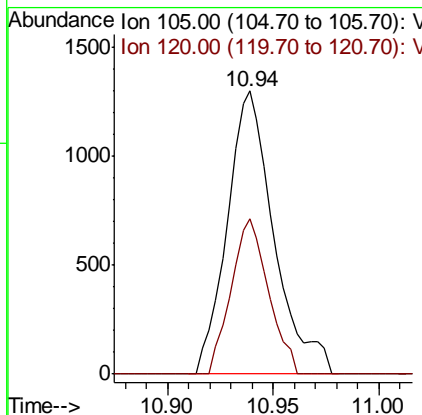
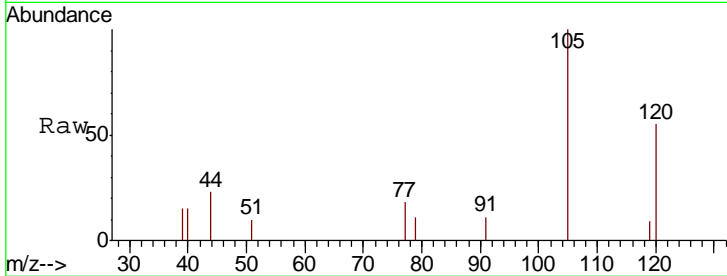




#44
 1,2,4-Trimethylbenzene
 Concen: 0.070 ug/L
 RT: 10.94 min Scan# 3063
 Delta R.T. 0.00 min
 Lab File: VV016255.D
 Acq: 28 May 2020 02:36

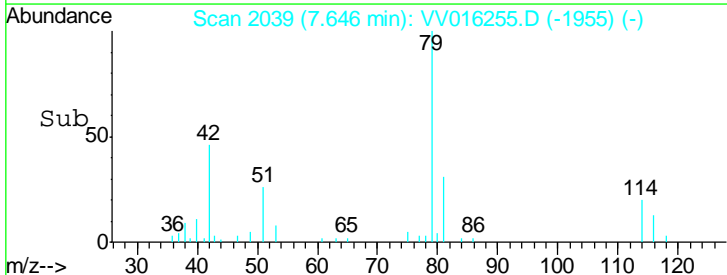
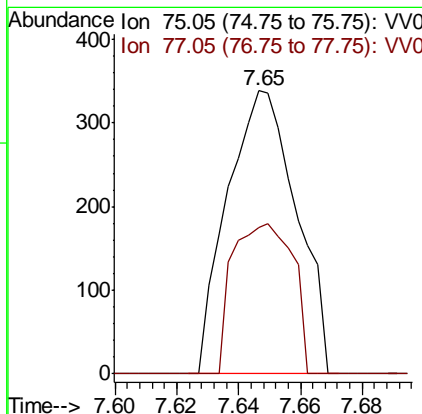
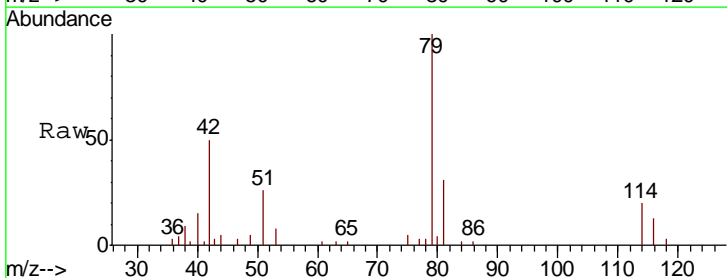
Instrument :
 MSVOA_V
 ClientSampled :

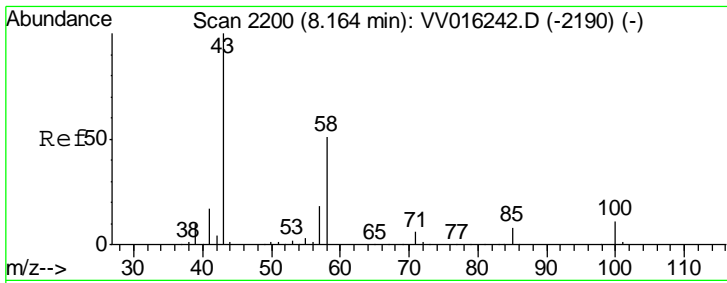
Tgt Ion: 105 Resp: 1995
 Ion Ratio Lower Upper
 105 100
 120 43.5 34.6 52.0



#46
 trans-1,3-Dichloropropene
 Concen: 0.066 ug/L
 RT: 7.65 min Scan# 2039
 Delta R.T. -0.03 min
 Lab File: VV016255.D
 Acq: 28 May 2020 02:36

Tgt Ion: 75 Resp: 526
 Ion Ratio Lower Upper
 75 100
 77 51.8 21.7 40.3#

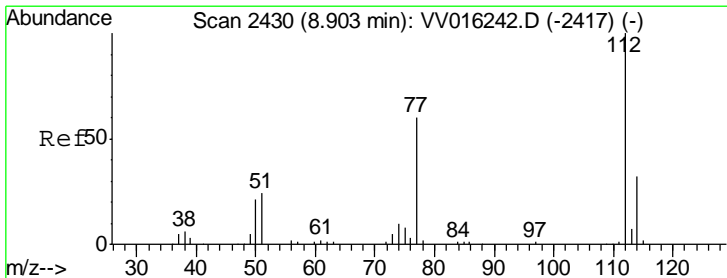
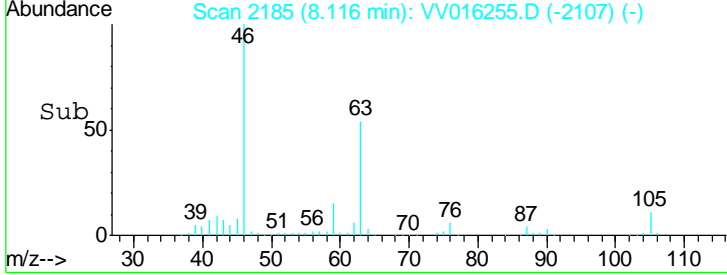
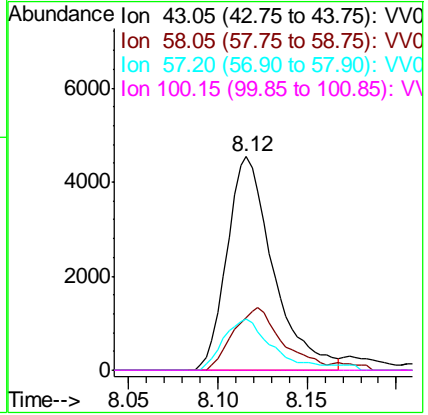
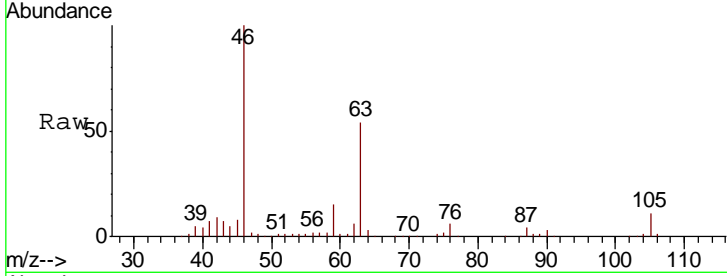




#50
 2-Hexanone
 Concen: 2.758 ug/L
 RT: 8.12 min Scan# 2185
 Delta R.T. -0.05 min
 Lab File: VV016255.D
 Acq: 28 May 2020 02:36

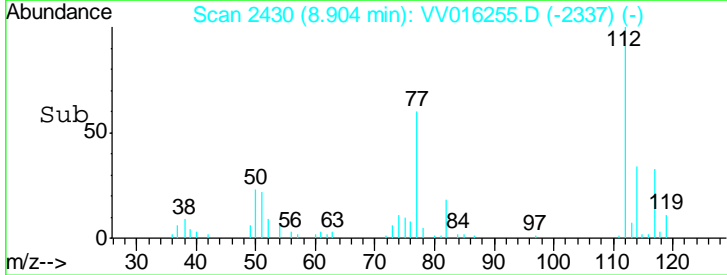
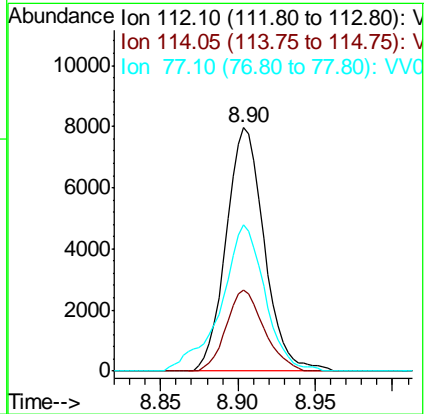
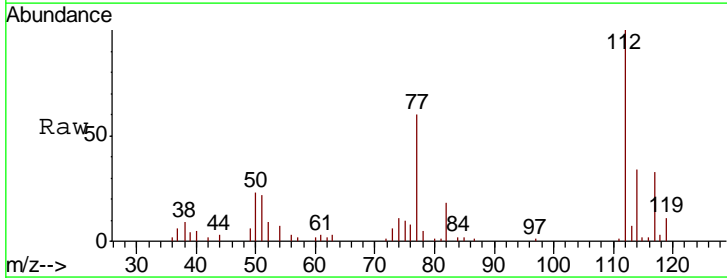
Instrument :
 MSVOA_V
 ClientSampled :

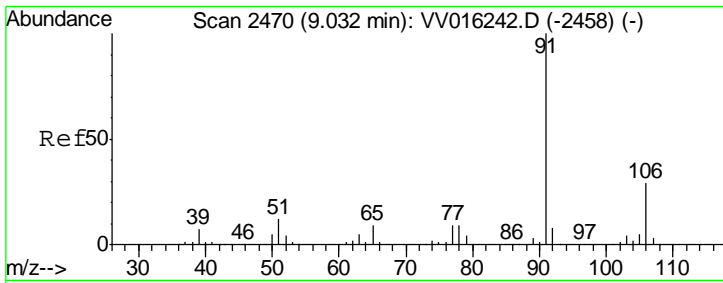
Tgt Ion	Resp	Lower	Upper
43	100		
58	31.1	41.4	62.0#
57	25.3	15.0	22.4#
100	0.0	9.0	13.4#



#53
 Chlorobenzene
 Concen: 0.726 ug/L
 RT: 8.90 min Scan# 2430
 Delta R.T. 0.00 min
 Lab File: VV016255.D
 Acq: 28 May 2020 02:36

Tgt Ion	Resp	Lower	Upper
112	100		
114	33.5	22.3	41.3
77	60.1	50.7	76.1

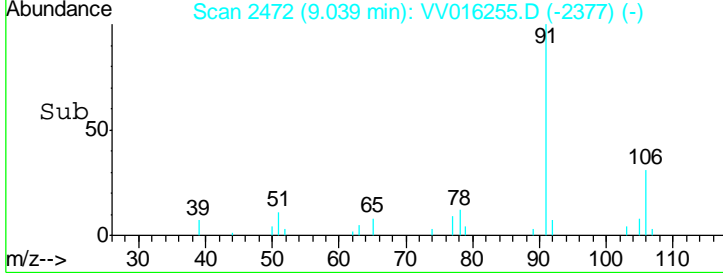
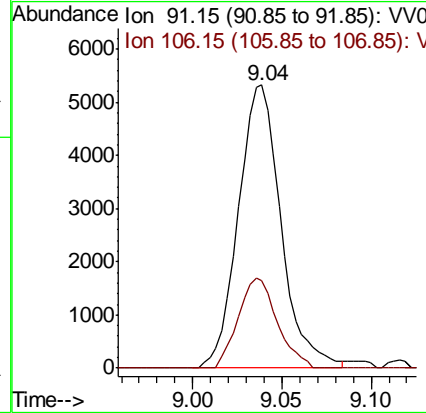
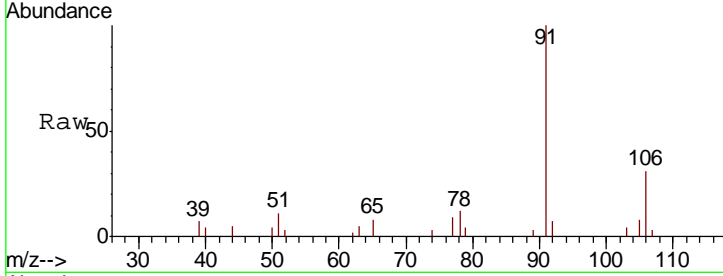




#54
 Ethylbenzene
 Concen: 0.262 ug/L
 RT: 9.04 min Scan# 2472
 Delta R.T. 0.01 min
 Lab File: VV016255.D
 Acq: 28 May 2020 02:36

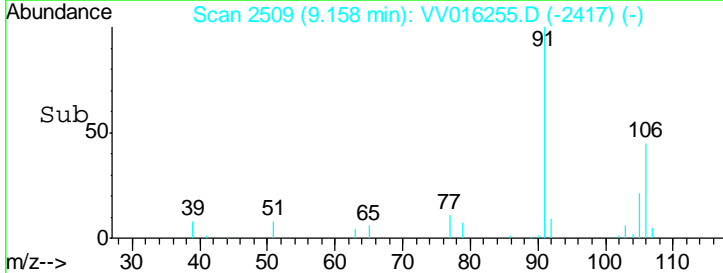
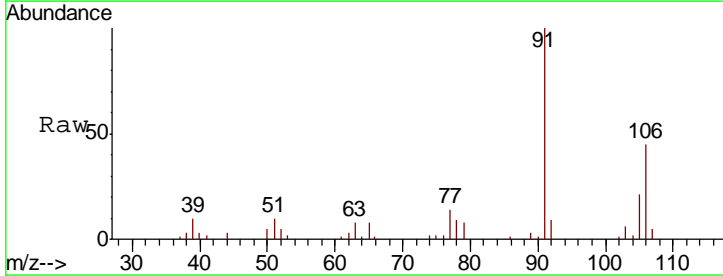
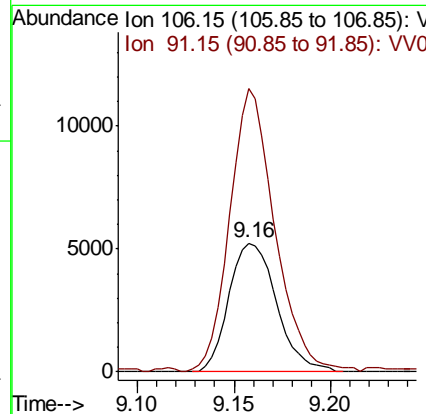
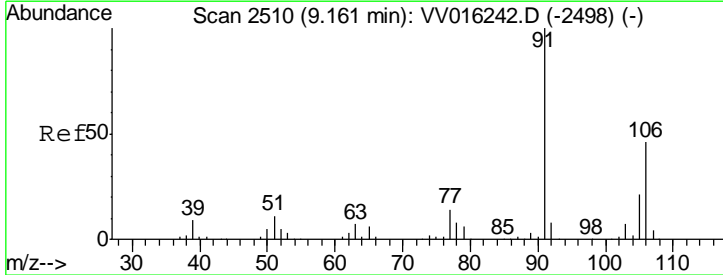
Instrument :
 MSVOA_V
 ClientSampled :

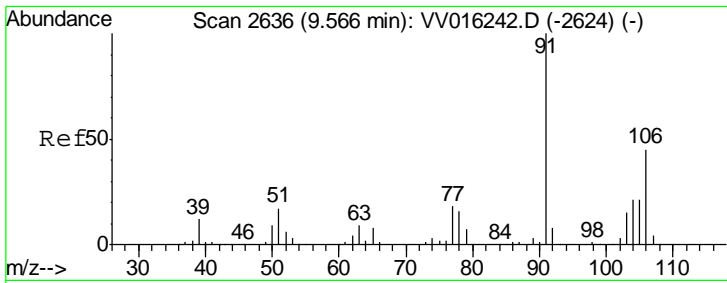
Tgt Ion: 91 Resp: 8857
 Ion Ratio Lower Upper
 91 100
 106 30.8 21.0 39.0



#55
 m,p-xylene
 Concen: 0.706 ug/L
 RT: 9.16 min Scan# 2509
 Delta R.T. -0.00 min
 Lab File: VV016255.D
 Acq: 28 May 2020 02:36

Tgt Ion: 106 Resp: 8955
 Ion Ratio Lower Upper
 106 100
 91 220.0 148.1 275.0

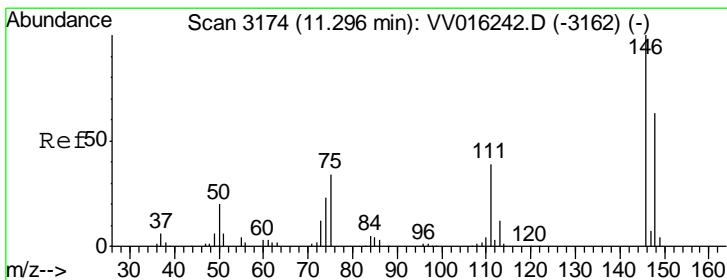
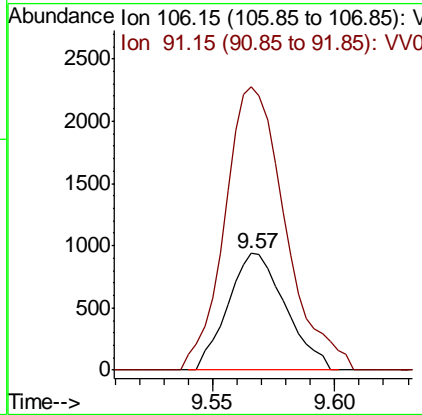
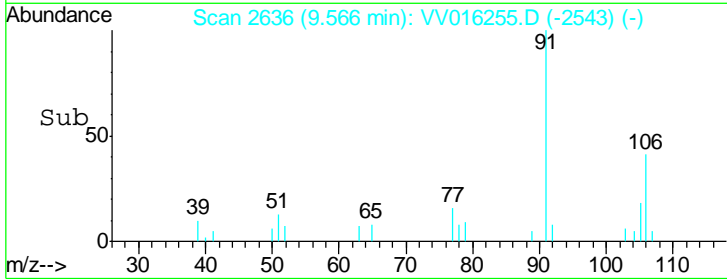
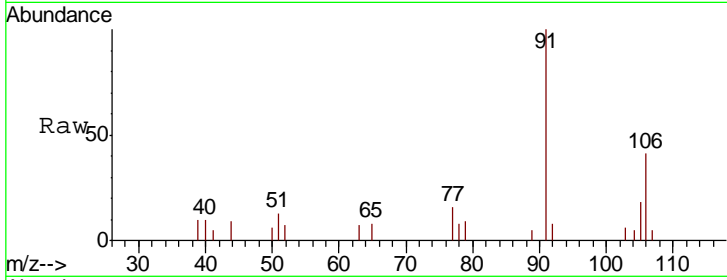




#56
 o-xylene
 Concen: 0.127 ug/L
 RT: 9.57 min Scan# 2636
 Delta R.T. 0.00 min
 Lab File: VV016255.D
 Acq: 28 May 2020 02:36

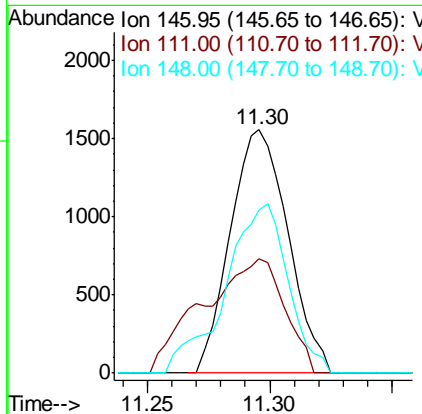
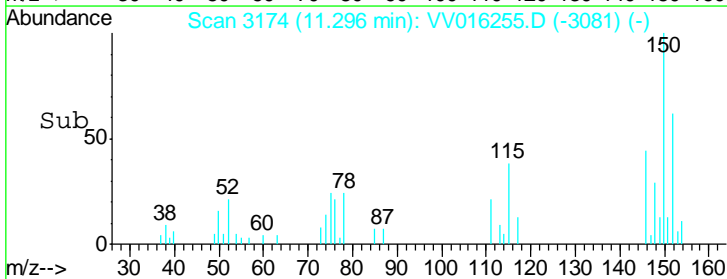
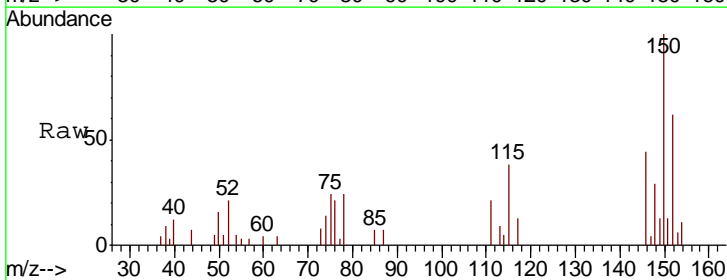
Instrument : MSVOA_V
 ClientSampled :

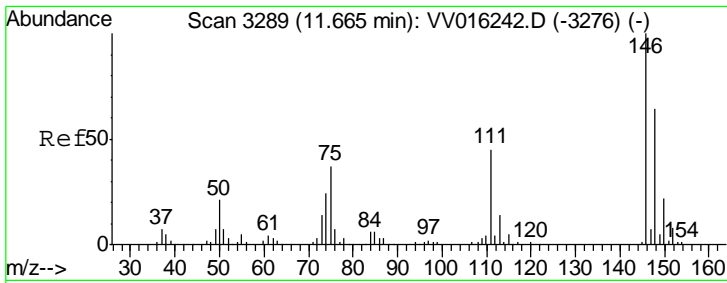
Tgt Ion	Resp	Lower	Upper
106	1539		
91	242.7	158.8	294.8



#64
 1,4-Dichlorobenzene
 Concen: 0.184 ug/L
 RT: 11.30 min Scan# 3174
 Delta R.T. 0.00 min
 Lab File: VV016255.D
 Acq: 28 May 2020 02:36

Tgt Ion	Resp	Lower	Upper
146	2548		
111	46.9	28.3	52.7
148	66.8	43.3	80.3

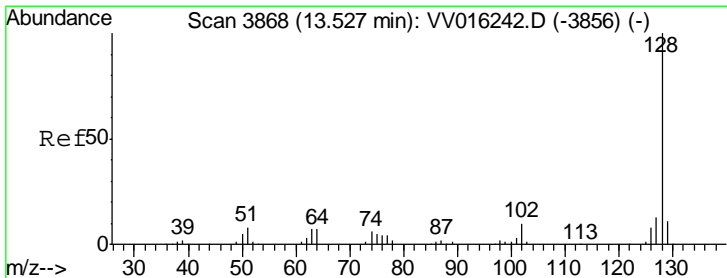
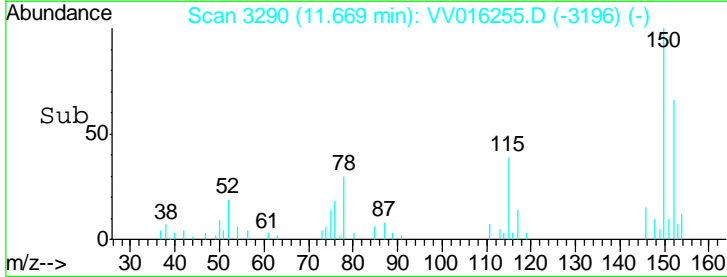
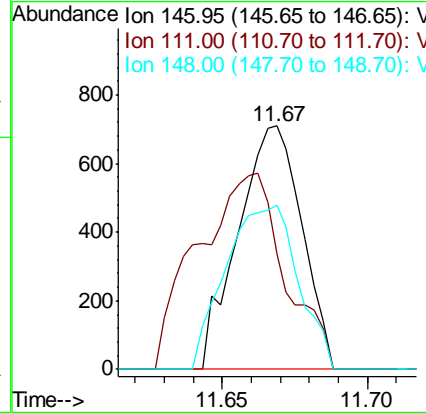
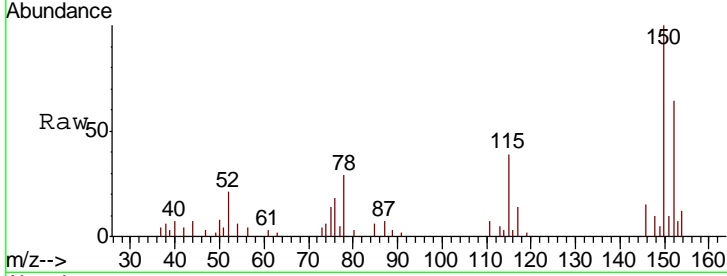




#66
 1,2-Dichlorobenzene
 Concen: 0.088 ug/L
 RT: 11.67 min Scan# 3290
 Delta R.T. 0.00 min
 Lab File: VV016255.D
 Acq: 28 May 2020 02:36

Instrument : MSVOA_V
 ClientSampled :

Tgt Ion	Resp	Lower	Upper
146	1083		
111	47.3	35.7	53.5
148	67.3	51.3	76.9



#70
 Naphthalene
 Concen: 0.768 ug/L
 RT: 13.53 min Scan# 3868
 Delta R.T. 0.00 min
 Lab File: VV016255.D
 Acq: 28 May 2020 02:36

Tgt Ion	Resp	Lower	Upper
128	14187		
129	11.5	8.6	13.0
127	13.7	10.6	15.8

