

Data Path : Z:\VOASRV\HPCHEM1\MSVOA V\DATA\VV052720\
 Data File : VV016232.D
 Acq On : 27 May 2020 16:52
 Operator : SY/MD
 Sample : L2754-14
 Misc : 25.0mL/MSVOA V/WATER
 ALS Vial : 19 Sample Multiplier: 1

Instrument :
 MSVOA_V
 ClientSampleId :
 GAXA0

Quant Time: May 28 04:55:42 2020
 Quant Method : Z:\VOASRV\HPCHEM1\MSVOA_V\METHOD\SOMVTR052620WMA.M
 Quant Title : TRACE VOA SOM01.0
 QLast Update : Thu May 28 01:17:22 2020
 Response via : Initial Calibration

Internal Standards	R.T.	QIon	Response	Conc	Units	Dev(Min)
1) 1,4-Difluorobenzene	5.64	114	92517	5.00	ug/L	0.00
28) Chlorobenzene-d5	8.87	117	91512	5.00	ug/L	0.00
61) 1,4-Dichlorobenzene-d4	11.27	152	41533	5.00	ug/L	0.00

System Monitoring Compounds

4) Vinyl Chloride-d3	1.32	65	27016	4.55	ug/L	0.00
Spiked Amount	5.000	Range	40 - 130	Recovery	=	91.00%
7) Chloroethane-d5	1.58	69	24565	4.71	ug/L	0.00
Spiked Amount	5.000	Range	65 - 130	Recovery	=	94.20%
11) 1,1-Dichloroethene-d2	2.13	63	38483	3.45	ug/L	0.00
Spiked Amount	5.000	Range	60 - 125	Recovery	=	69.00%
20) 2-Butanone-d5	3.94	46	74071	50.26	ug/L	0.00
Spiked Amount	50.000	Range	40 - 130	Recovery	=	100.52%
24) Chloroform-d	4.38	84	54376	4.60	ug/L	0.00
Spiked Amount	5.000	Range	70 - 125	Recovery	=	92.00%
26) 1,2-Dichloroethane-d4	5.06	65	30321	4.84	ug/L	0.00
Spiked Amount	5.000	Range	70 - 130	Recovery	=	96.80%
32) Benzene-d6	5.08	84	104132	4.59	ug/L	0.00
Spiked Amount	5.000	Range	70 - 125	Recovery	=	91.80%
36) 1,2-Dichloropropane-d6	6.10	67	33277	4.74	ug/L	0.00
Spiked Amount	5.000	Range	60 - 140	Recovery	=	94.80%
41) Toluene-d8	7.34	98	92957	4.30	ug/L	0.00
Spiked Amount	5.000	Range	70 - 130	Recovery	=	86.00%
45) trans-1,3-Dichloropropene-	7.65	79	10833	4.14	ug/L	0.00
Spiked Amount	5.000	Range	55 - 130	Recovery	=	82.80%
48) 2-Hexanone-d5	8.12	63	53636	44.74	ug/L	0.00
Spiked Amount	50.000	Range	45 - 130	Recovery	=	89.48%
59) 1,1,2,2-Tetrachloroethane-	10.24	84	22822	4.40	ug/L	0.00
Spiked Amount	5.000	Range	65 - 120	Recovery	=	88.00%
65) 1,2-Dichlorobenzene-d4	11.65	152	32952	4.75	ug/L	0.00
Spiked Amount	5.000	Range	80 - 120	Recovery	=	95.00%

Target Compounds

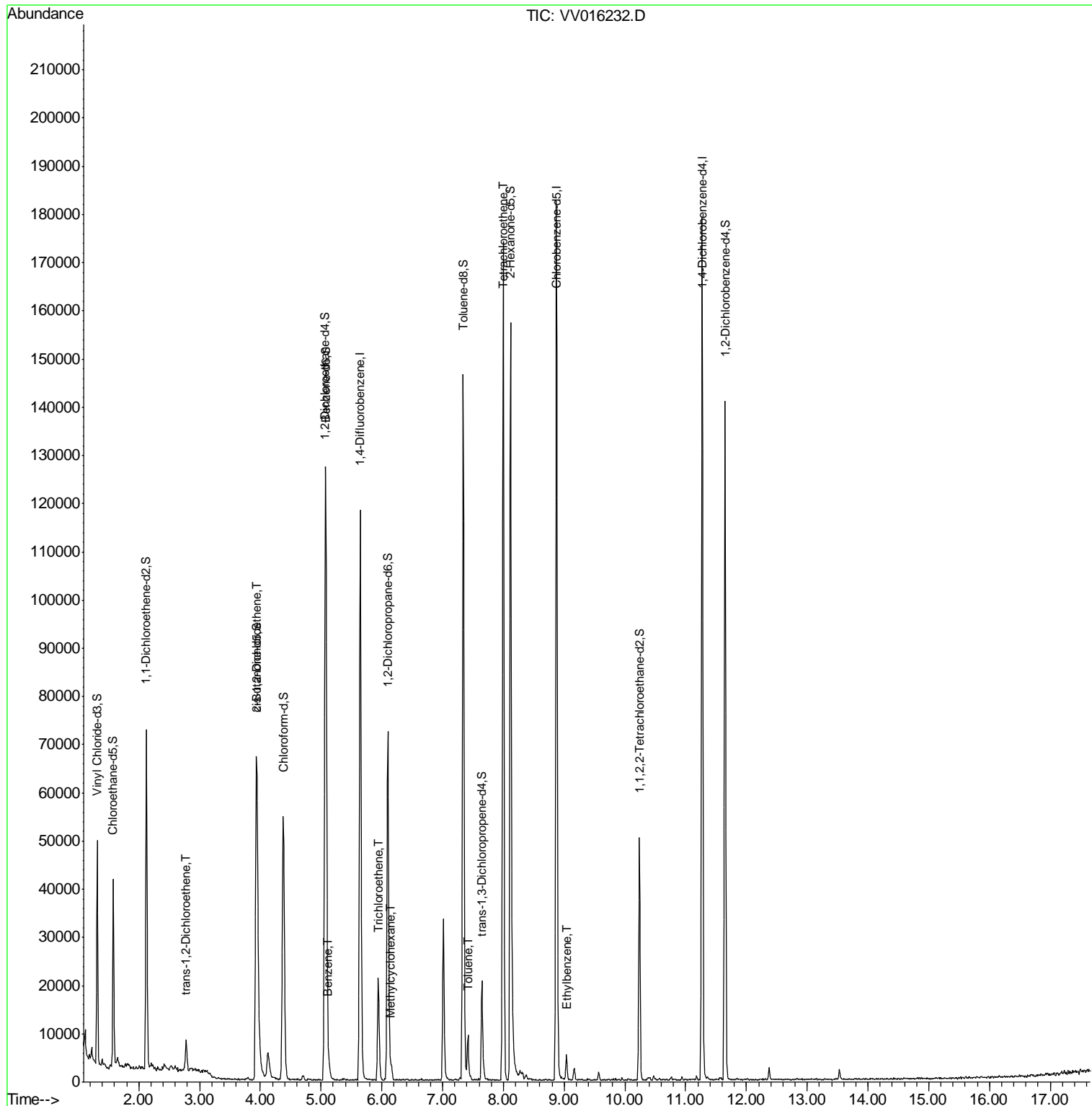
					Ovalue
18) trans-1,2-Dichloroethene	2.78	96	1968	0.330 ug/L	94
22) cis-1,2-Dichloroethene	3.94	96	16376	2.319 ug/L	97
33) Benzene	5.13	78	2740	0.104 ug/L	100
34) Trichloroethene	5.94	95	7459	1.087 ug/L	98
35) Methylcyclohexane	6.15	83	932	0.081 ug/L #	79
42) Toluene	7.41	91	6549	0.228 ug/L	93
49) Tetrachloroethene	8.00	164	35083	7.123 ug/L	97
54) Ethylbenzene	9.04	91	3876	0.121 ug/L	100

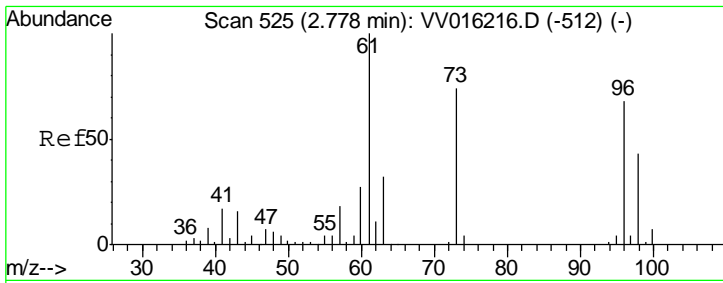
(#) = qualifier out of range (m) = manual integration (+) = signals summed

Data Path : Z:\VOASRV\HPCHEM1\MSVOA V\DATA\VV052720\
 Data File : VV016232.D
 Acq On : 27 May 2020 16:52
 Operator : SY/MD
 Sample : L2754-14
 Misc : 25.0mL/MSVOA V/WATER
 ALS Vial : 19 Sample Multiplier: 1

Instrument :
 MSVOA_V
 Client Sampled :
 GAXA0

Quant Time: May 28 04:55:42 2020
 Quant Method : Z:\VOASRV\HPCHEM1\MSVOA_V\METHOD\SOMVTR052620WMA.M
 Quant Title : TRACE VOA SOM01.0
 QLast Update : Thu May 28 01:17:22 2020
 Response via : Initial Calibration

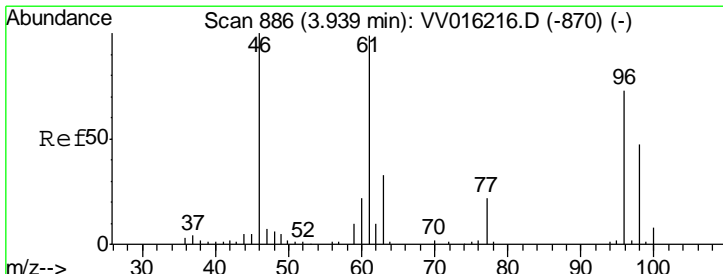
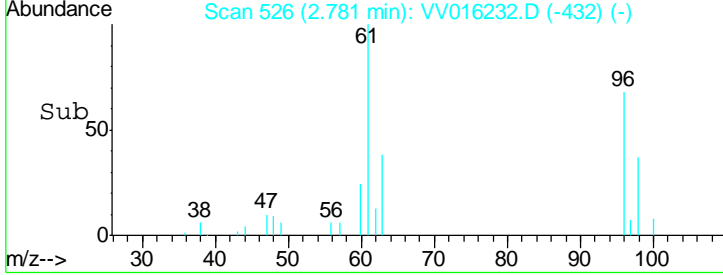
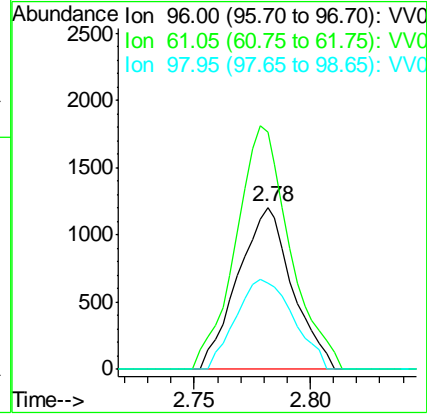
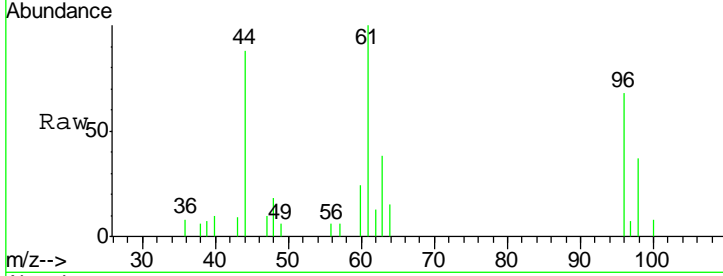




#18
 trans-1,2-Dichloroethene
 Concen: 0.330 ug/L
 RT: 2.78 min Scan# 526
 Delta R.T. 0.00 min
 Lab File: VV016232.D
 Acq: 27 May 2020 16:52

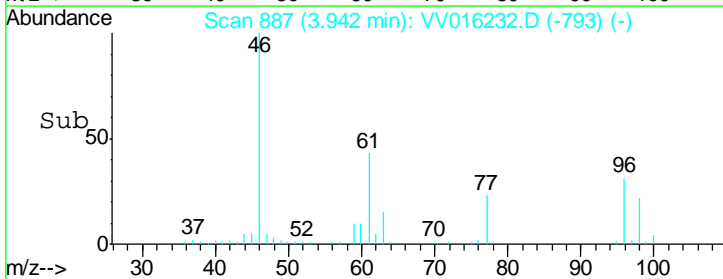
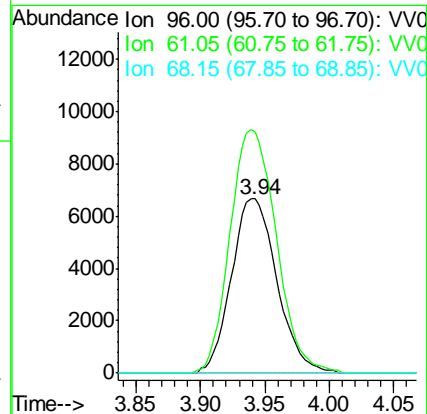
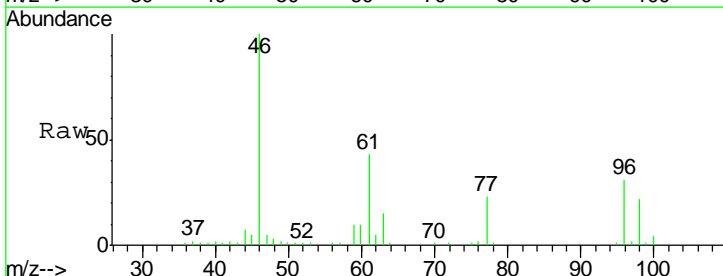
Instrument :
 MSVOA_V
 ClientSampled :
 GAXA0

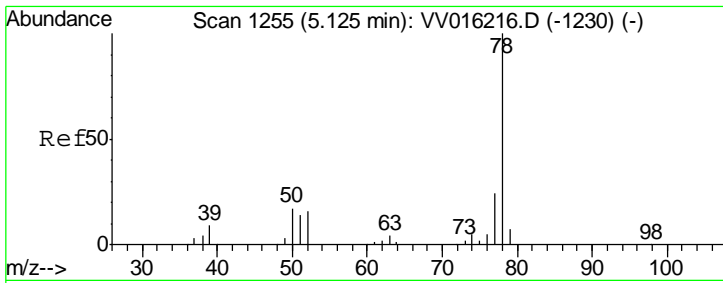
Tgt Ion	Resp	Lower	Upper
96	1968		
61	146.6	99.8	185.4
98	53.5	44.0	81.6



#22
 cis-1,2-Dichloroethene
 Concen: 2.319 ug/L
 RT: 3.94 min Scan# 887
 Delta R.T. 0.00 min
 Lab File: VV016232.D
 Acq: 27 May 2020 16:52

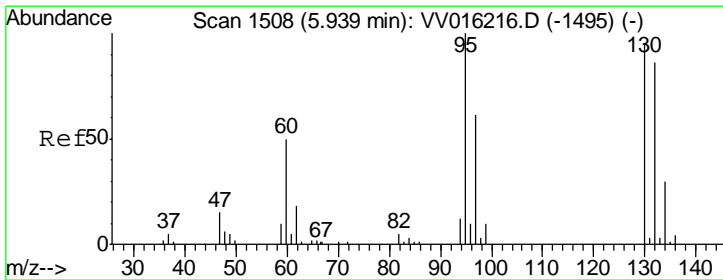
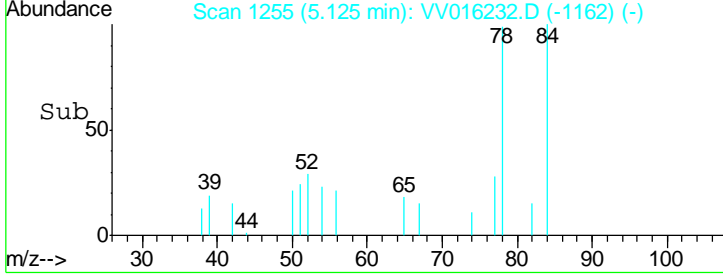
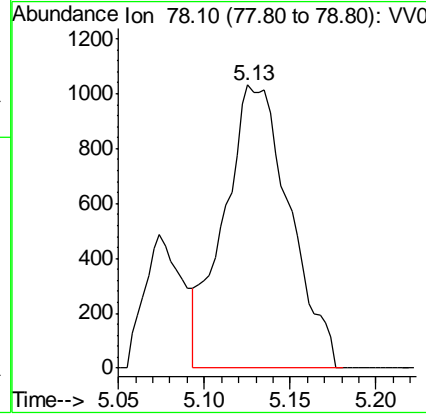
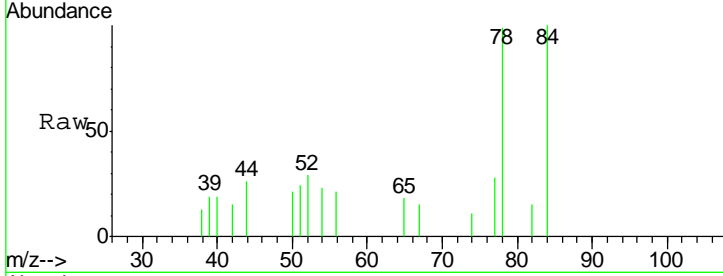
Tgt Ion	Resp	Lower	Upper
96	16376		
61	138.3	99.7	185.1
68	0.0	0.0	0.0





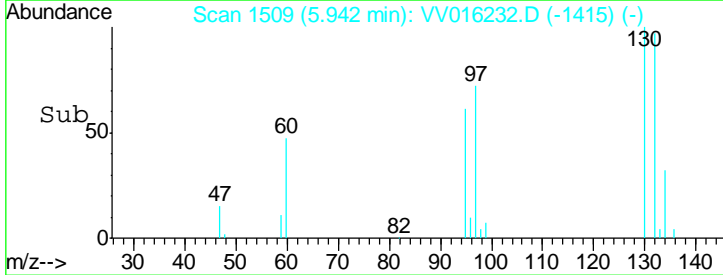
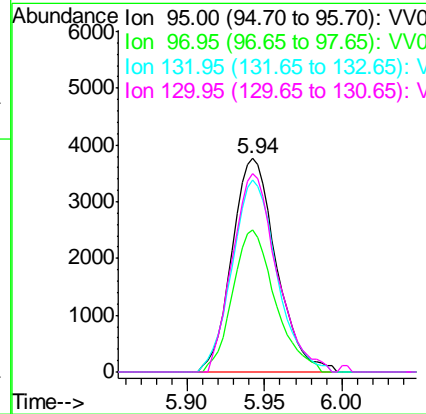
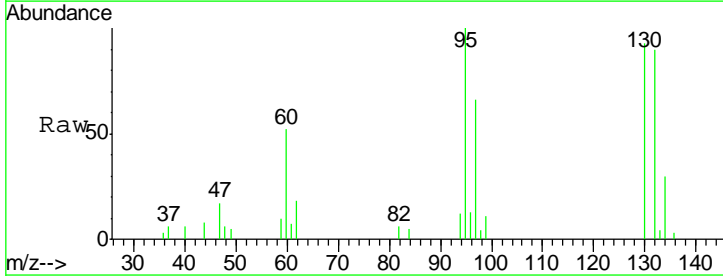
#33
 Benzene
 Concen: 0.104 ug/L
 RT: 5.13 min Scan# 1255
 Delta R.T. 0.00 min
 Lab File: VV016232.D
 Acq: 27 May 2020 16:52
 Tgt Ion: 78 Resp: 2740

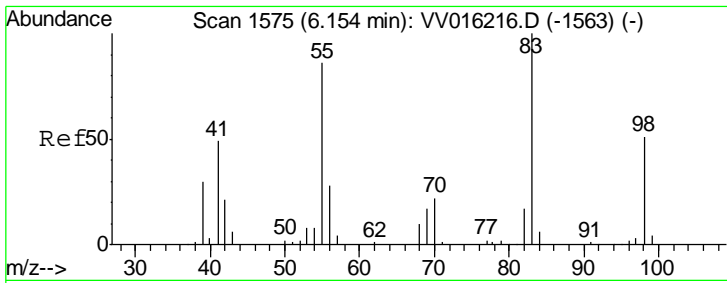
Instrument : MSVOA_V
 ClientSampled : GAXA0



#34
 Trichloroethene
 Concen: 1.087 ug/L
 RT: 5.94 min Scan# 1509
 Delta R.T. 0.00 min
 Lab File: VV016232.D
 Acq: 27 May 2020 16:52
 Tgt Ion: 95 Resp: 7459

Ion	Ratio	Lower	Upper
95	100		
97	66.5	43.6	81.0
132	89.9	63.9	118.7
130	92.9	65.2	121.0

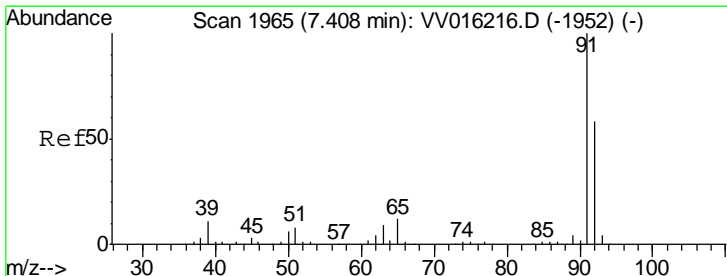
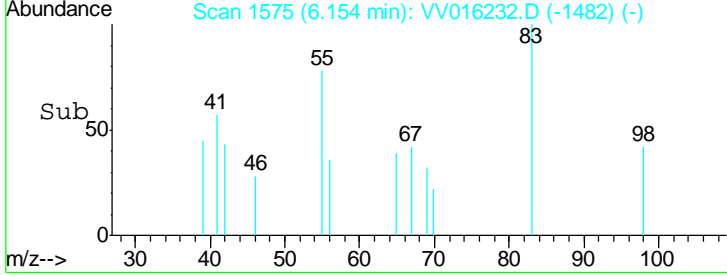
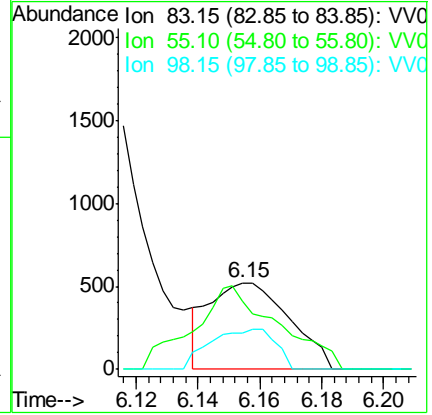
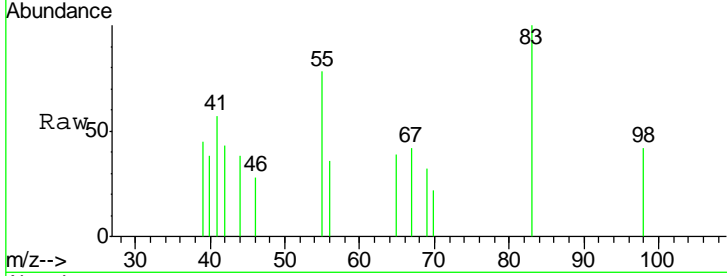




#35
 Methylcyclohexane
 Concen: 0.081 ug/L
 RT: 6.15 min Scan# 1575
 Delta R.T. 0.00 min
 Lab File: VV016232.D
 Acq: 27 May 2020 16:52

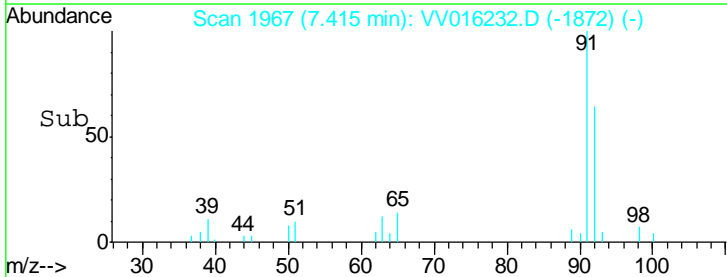
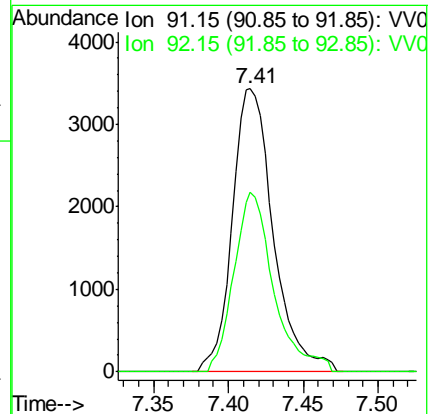
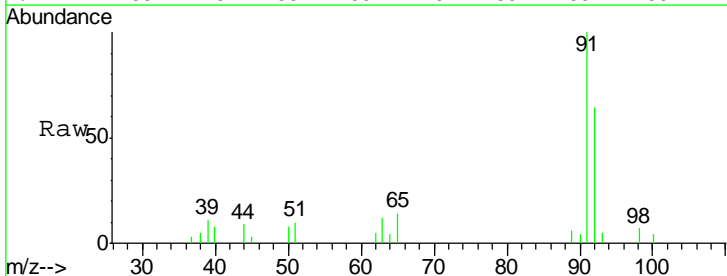
Instrument :
 MSVOA_V
ClientSampled :
 GAXA0

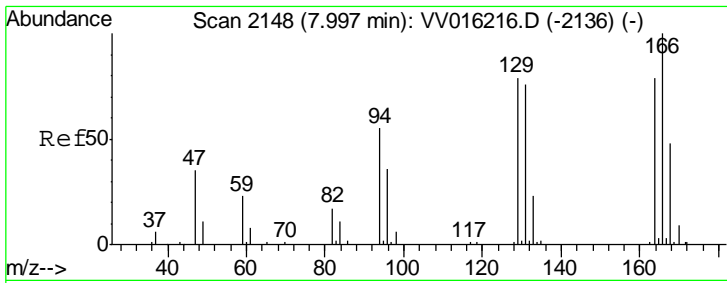
Tgt Ion	Resp	Lower	Upper
83	100		
55	102.8	65.4	98.0#
98	38.1	39.3	58.9#



#42
 Toluene
 Concen: 0.228 ug/L
 RT: 7.41 min Scan# 1967
 Delta R.T. 0.01 min
 Lab File: VV016232.D
 Acq: 27 May 2020 16:52

Tgt Ion	Resp	Lower	Upper
91	100		
92	63.5	40.9	76.0

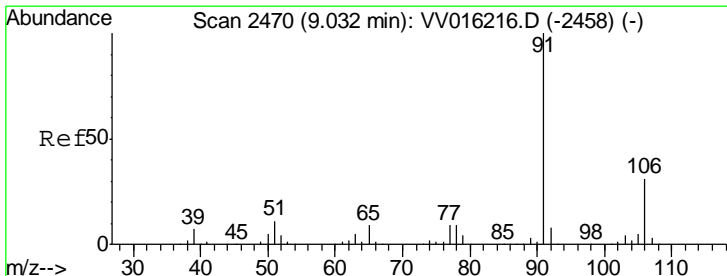
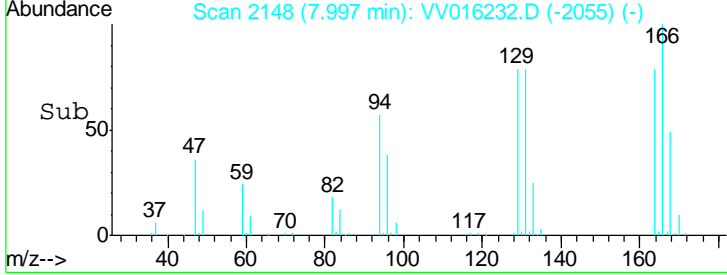
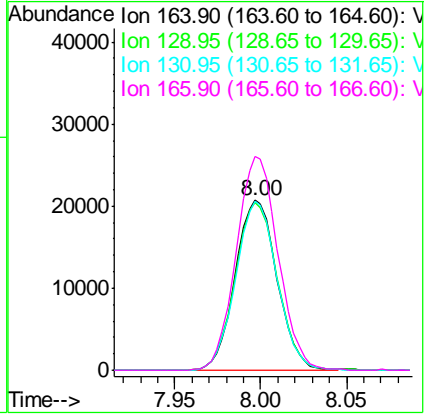
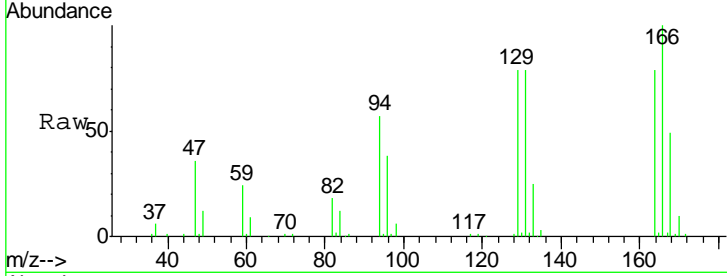




#49
 Tetrachloroethene
 Concen: 7.123 ug/L
 RT: 8.00 min Scan# 2148
 Delta R.T. 0.00 min
 Lab File: VV016232.D
 Acq: 27 May 2020 16:52

Instrument : MSVOA_V
 ClientSampled : GAXA0

Tgt Ion	Resp	Lower	Upper
164	100		
129	99.1	70.7	131.3
131	99.7	66.6	123.8
166	125.8	86.9	161.5



#54
 Ethylbenzene
 Concen: 0.121 ug/L
 RT: 9.04 min Scan# 2472
 Delta R.T. 0.01 min
 Lab File: VV016232.D
 Acq: 27 May 2020 16:52

Tgt Ion	Resp	Lower	Upper
91	100		
106	29.8	21.0	39.0

