

Data Path : Z:\voasrv\HPCHEM1\MSVOA\_V\Data\VW052721\  
 Data File : VW021445.D  
 Acq On : 27 May 2021 16:11  
 Operator : SY/MD  
 Sample : M2250-01  
 Misc : 5.0mL/MSVOA\_V/WATER  
 ALS Vial : 11 Sample Multiplier: 1

**Instrument :**  
 MSVOA\_V  
**Client Sampled :**  
 MDL-WATER-QT3-2021-05

**Manual Integrations**  
**APPROVED**  
 MMDadoda  
 5/28/2021 3:06:28 PM

Quant Time: May 28 03:22:55 2021  
 Quant Method : Z:\voasrv\HPCHEM1\MSVOA\_V\Method\SFAMVLM052721WMA.M  
 Quant Title : VOC Analysis  
 QLast Update : Fri May 28 02:47:54 2021  
 Response via : Initial Calibration

Compound	R.T.	QIon	Response	Conc	Units	Dev(Min)
<b>Internal Standards</b>						
1) 1,4-Difluorobenzene	5.612	114	492299	50.00	ug/L	0.00
28) Chlorobenzene-d5	8.850	117	461496	50.00	ug/L	0.00
58) 1,4-Dichlorobenzene-d4	11.249	152	260748	50.00	ug/L	0.00
<b>System Monitoring Compounds</b>						
4) Vinyl Chloride-d3	1.307	65	143153	44.17	ug/L	0.00
Spiked Amount	50.000	Range 60 - 135	Recovery =	88.34%		
7) Chloroethane-d5	1.568	69	104534	43.36	ug/L	0.00
Spiked Amount	50.000	Range 70 - 130	Recovery =	86.72%		
11) 1,1-Dichloroethene-d2	2.108	63	196101	35.41	ug/L	0.00
Spiked Amount	50.000	Range 60 - 125	Recovery =	70.82%		
21) 2-Butanone-d5	3.876	46	214126	92.13	ug/L	0.00
Spiked Amount	100.000	Range 40 - 130	Recovery =	92.13%		
24) Chloroform-d	4.346	84	294069	45.58	ug/L	0.00
Spiked Amount	50.000	Range 70 - 125	Recovery =	91.16%		
26) 1,2-Dichloroethane-d4	5.027	65	180335	48.53	ug/L	0.00
Spiked Amount	50.000	Range 70 - 125	Recovery =	97.06%		
32) Benzene-d6	5.046	84	610796	47.31	ug/L	0.00
Spiked Amount	50.000	Range 70 - 125	Recovery =	94.62%		
36) 1,2-Dichloropropane-d6	6.069	67	192461	48.27	ug/L	0.00
Spiked Amount	50.000	Range 70 - 120	Recovery =	96.54%		
41) Toluene-d8	7.313	98	582928	47.39	ug/L	0.00
Spiked Amount	50.000	Range 80 - 120	Recovery =	94.78%		
43) trans-1,3-Dichloroprop...	7.619	79	99134	46.46	ug/L	0.00
Spiked Amount	50.000	Range 60 - 125	Recovery =	92.92%		
47) 2-Hexanone-d5	8.085	63	169128	92.38	ug/L	0.00
Spiked Amount	100.000	Range 45 - 130	Recovery =	92.38%		
56) 1,1,2,2-Tetrachloroeth...	10.213	84	262094	47.36	ug/L	0.00
Spiked Amount	50.000	Range 65 - 120	Recovery =	94.72%		
66) 1,2-Dichlorobenzene-d4	11.622	152	259354	47.85	ug/L	0.00
Spiked Amount	50.000	Range 80 - 120	Recovery =	95.70%		
<b>Target Compounds</b>						
2) Dichlorodifluoromethane	1.127	85	8003	2.35	ug/L	99
3) Chloromethane	1.240	50	7723	2.27	ug/L	95
5) Vinyl chloride	1.310	62	8966	2.57	ug/L #	75
6) Bromomethane	1.523	94	5708	2.39	ug/L	99
8) Chloroethane	1.584	64	4581	2.31	ug/L	99
9) Trichlorofluoromethane	1.751	101	11853	2.29	ug/L	99
10) 1,1,2-Trichloro-1,2,-...	2.114	101	8321	2.77	ug/L #	83
12) 1,1-Dichloroethene	2.114	96	7962	2.76	ug/L #	1
13) Acetone	2.172	43	8856	4.43	ug/L #	86
14) Carbon disulfide	2.294	76	20834	2.29	ug/L	97
15) Methyl Acetate	2.432	43	7406	2.16	ug/L	98
16) Methylene chloride	2.506	84	10185	2.81	ug/L	98
17) trans-1,2-Dichloroethene	2.764	96	7980	2.42	ug/L	94
18) Methyl tert-butyl Ether	2.767	73	23252	2.23	ug/L	97
19) 1,1-Dichloroethane	3.191	63	12772	2.19	ug/L	96
20) cis-1,2-Dichloroethene	3.908	96	8502	2.31	ug/L	98
22) 2-Butanone	3.989	43	10744m	4.24	ug/L	
23) Bromochloromethane	4.255	128	4680	2.29	ug/L	92
25) Chloroform	4.374	83	15338	2.54	ug/L	95

Data Path : Z:\voasrv\HPCHEM1\MSVOA\_V\Data\VW052721\  
 Data File : VW021445.D  
 Acq On : 27 May 2021 16:11  
 Operator : SY/MD  
 Sample : M2250-01  
 Misc : 5.0mL/MSVOA\_V/WATER  
 ALS Vial : 11 Sample Multiplier: 1

Instrument :  
 MSVOA\_V  
 ClientSampleId :  
 MDL-WATER-QT3-2021-05

Manual Integrations  
 APPROVED

MMDadoda  
 5/28/2021 3:06:28 PM

Quant Time: May 28 03:22:55 2021  
 Quant Method : Z:\voasrv\HPCHEM1\MSVOA\_V\Method\SFAMVLM052721WMA.M  
 Quant Title : VOC Analysis  
 QLast Update : Fri May 28 02:47:54 2021  
 Response via : Initial Calibration

Compound	R.T.	QIon	Response	Conc	Units	Dev(Min)
27) 1,2-Dichloroethane	5.136	62	9253	2.22	ug/L	100
29) Cyclohexane	4.673	56	12345	2.30	ug/L #	63
30) 1,1,1-Trichloroethane	4.606	97	12243	2.15	ug/L	99
31) Carbon tetrachloride	4.828	117	10867	2.10	ug/L	96
33) Benzene	5.101	78	29732	2.25	ug/L	100
34) Trichloroethene	5.921	95	8427	2.35	ug/L	95
35) Methylcyclohexane	6.127	83	12215	2.12	ug/L	96
37) 1,2-Dichloropropane	6.175	63	7769	2.31	ug/L #	92
38) Bromodichloromethane	6.513	83	10363	2.19	ug/L	99
39) cis-1,3-Dichloropropene	7.030	75	10992	1.94	ug/L	96
40) 4-Methyl-2-pentanone	7.230	43	19075	4.18	ug/L	97
42) Toluene	7.394	91	40731	2.78	ug/L	99
44) trans-1,3-Dichloropropene	7.657	75	12180	2.27	ug/L	99
45) 1,1,2-Trichloroethane	7.841	97	7423	2.17	ug/L	95
46) Tetrachloroethene	7.976	164	7609	2.31	ug/L	96
48) 2-Hexanone	8.146	43	14145	4.04	ug/L #	87
49) Dibromochloromethane	8.249	129	9335	2.18	ug/L	98
50) 1,2-Dibromoethane	8.355	107	8462	2.25	ug/L #	92
51) Chlorobenzene	8.882	112	22559	2.33	ug/L	97
52) Ethylbenzene	9.014	91	35299	2.19	ug/L	99
53) m,p-Xylene	9.143	106	13605	2.20	ug/L	98
54) o-Xylene	9.545	106	13684	2.24	ug/L	95
55) Styrene	9.564	104	22424	2.13	ug/L	98
57) 1,1,2,2-Tetrachloroethane	10.242	83	12712	2.38	ug/L #	97
59) Bromoform	9.734	173	7364	2.09	ug/L #	97
60) Isopropylbenzene	9.931	105	36762	2.28	ug/L	99
61) 1,2,3-Trichloropropane	10.271	75	9161	2.24	ug/L	98
62) 1,3,5-Trimethylbenzene	10.538	105	30553	2.20	ug/L	99
63) 1,2,4-Trimethylbenzene	10.914	105	31082	2.21	ug/L	97
64) 1,3-Dichlorobenzene	11.184	146	19027	2.33	ug/L	98
65) 1,4-Dichlorobenzene	11.275	146	19319	2.34	ug/L	95
67) 1,2-Dichlorobenzene	11.641	146	18675	2.29	ug/L	92
68) 1,2-Dibromo-3-chloropr...	12.429	75	2745	2.15	ug/L	83
69) 1,3,5-Trichlorobenzene	12.647	180	14474	2.10	ug/L	99
70) 1,2,4-trichlorobenzene	13.265	180	14464	2.35	ug/L	99
71) Naphthalene	13.506	128	27991	1.65	ug/L	100
72) 1,2,3-Trichlorobenzene	13.747	180	12256	2.05	ug/L	99

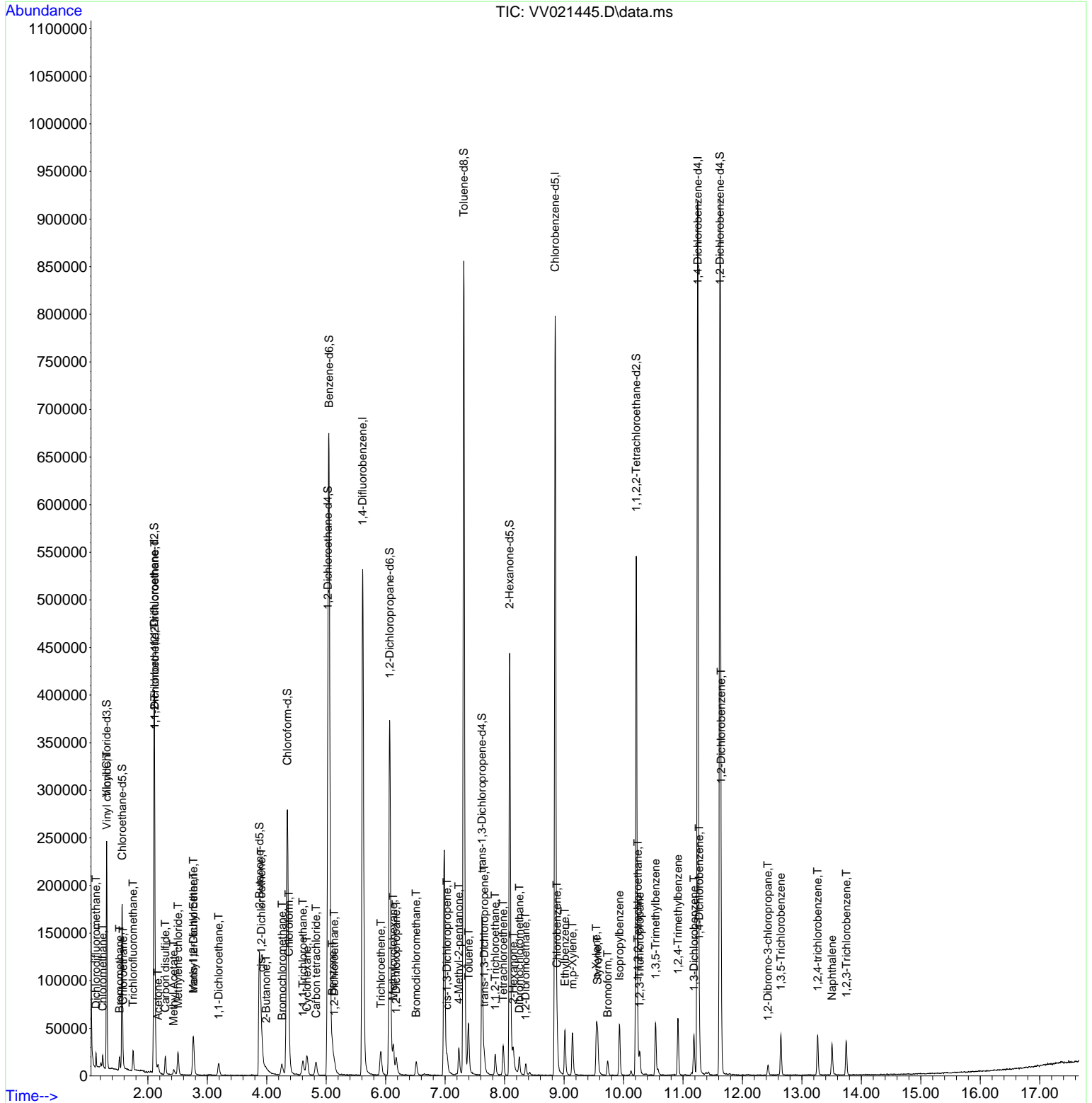
(#) = qualifier out of range (m) = manual integration (+) = signals summed

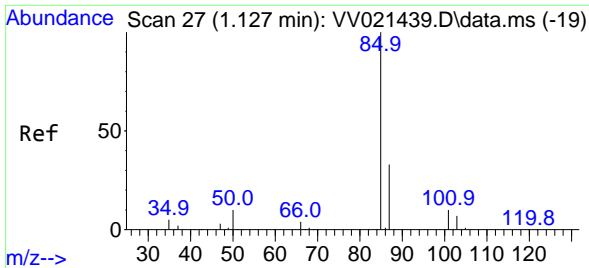
Data Path : Z:\voasrv\HPCHEM1\MSVOA\_V\Data\VV052721\  
 Data File : VV021445.D  
 Acq On : 27 May 2021 16:11  
 Operator : SY/MD  
 Sample : M2250-01  
 Misc : 5.0mL/MSVOA\_V/WATER  
 ALS Vial : 11 Sample Multiplier: 1

Instrument :  
 MSVOA\_V  
 Client Sampled :  
 MDL-WATER-QT3-2021-05

Manual Integrations  
**APPROVED**  
 MMDadoda  
 5/28/2021 3:06:28 PM

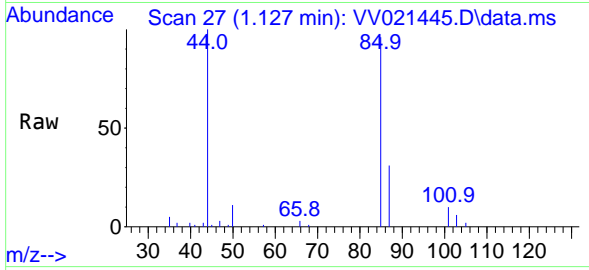
Quant Time: May 28 03:22:55 2021  
 Quant Method : Z:\voasrv\HPCHEM1\MSVOA\_V\Method\SFAMVLM052721WMA.M  
 Quant Title : VOC Analysis  
 QLast Update : Fri May 28 02:47:54 2021  
 Response via : Initial Calibration





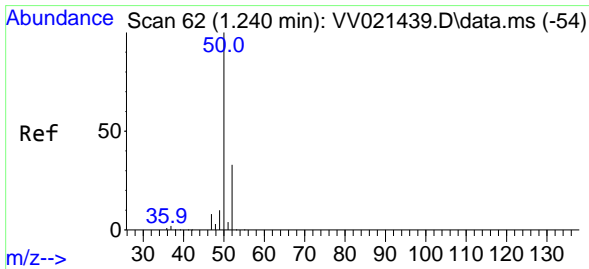
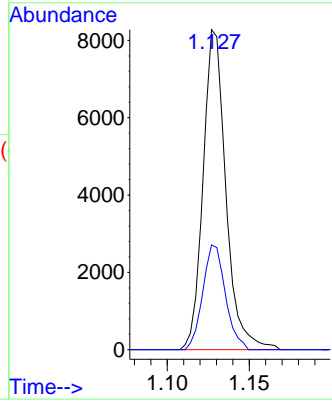
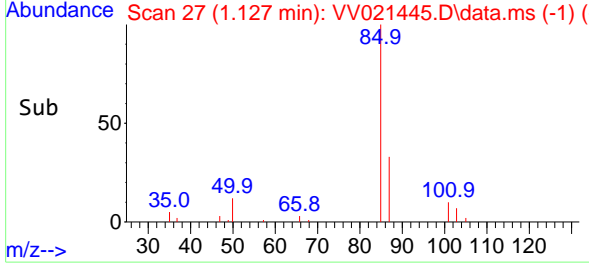
#2  
 Dichlorodifluoromethane  
 Concen: 2.35 ug/L  
 RT: 1.127 min Scan# 27  
 Delta R.T. -0.000 min  
 Lab File: VV021445.D  
 Acq: 27 May 2021 16:11

**Instrument :**  
 MSVOA\_V  
**ClientSampled :**  
 MDL-WATER-QT3-2021-05

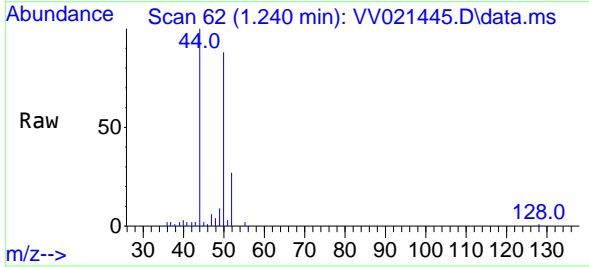


Tgt Ion: 85 Resp: 8003  
 Ion Ratio Lower Upper  
 85 100  
 87 32.4 26.6 39.8

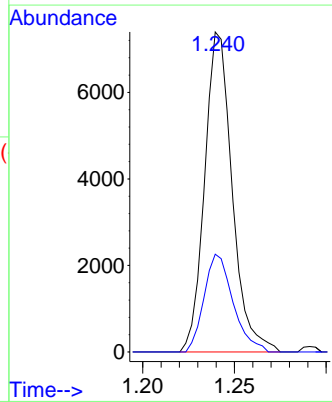
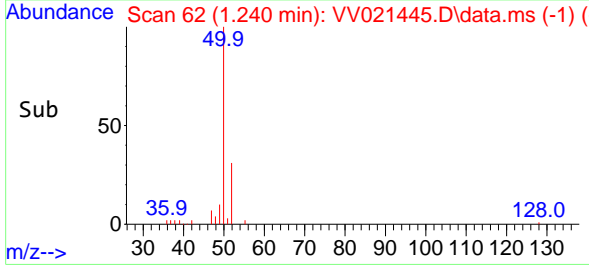
**Manual Integrations**  
**APPROVED**  
 MMDadoda  
 5/28/2021 3:06:28 PM

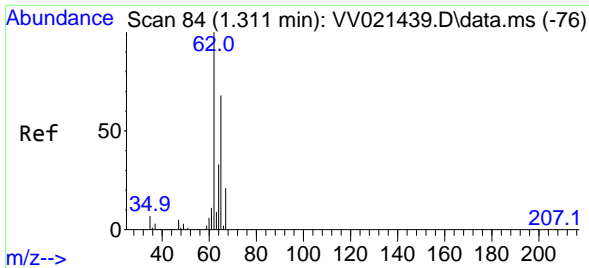


#3  
 Chloromethane  
 Concen: 2.27 ug/L  
 RT: 1.240 min Scan# 62  
 Delta R.T. -0.000 min  
 Lab File: VV021445.D  
 Acq: 27 May 2021 16:11



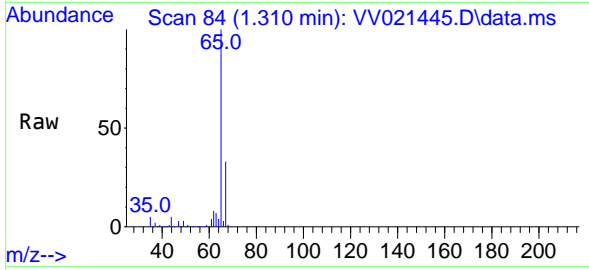
Tgt Ion: 50 Resp: 7723  
 Ion Ratio Lower Upper  
 50 100  
 52 30.5 23.3 43.3





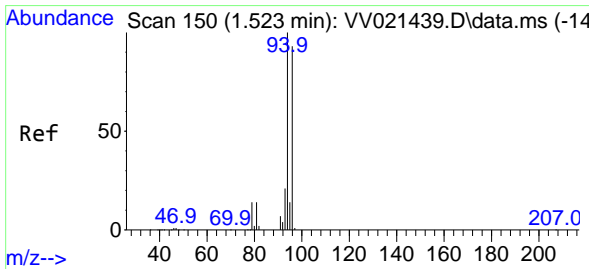
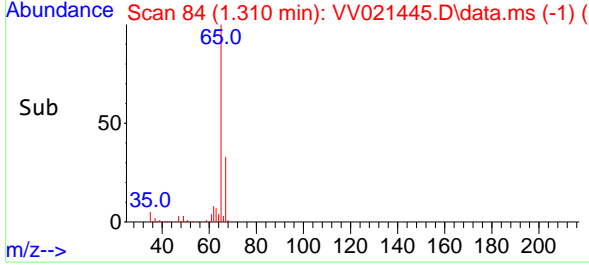
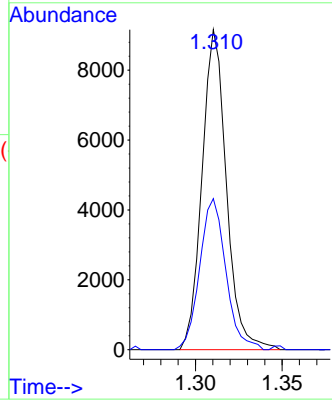
#5  
 Vinyl chloride  
 Concen: 2.57 ug/L  
 RT: 1.310 min Scan# 84  
 Delta R.T. -0.000 min  
 Lab File: VV021445.D  
 Acq: 27 May 2021 16:11

**Instrument :**  
 MSVOA\_V  
**ClientSampled :**  
 MDL-WATER-QT3-2021-05

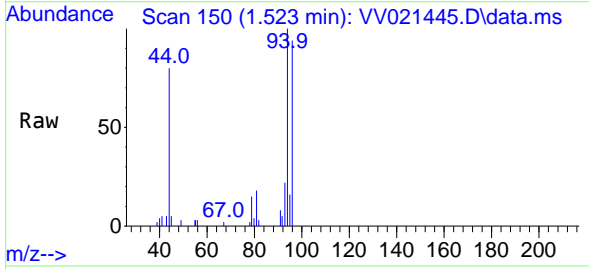


Tgt Ion: 62 Resp: 8966  
 Ion Ratio Lower Upper  
 62 100  
 64 47.2 23.1 42.9#

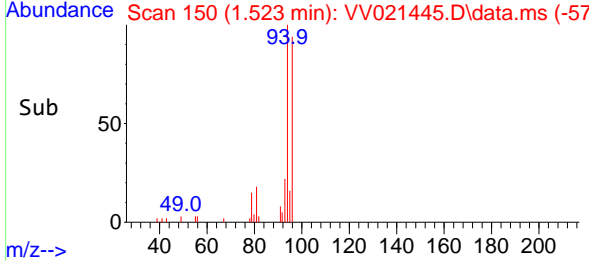
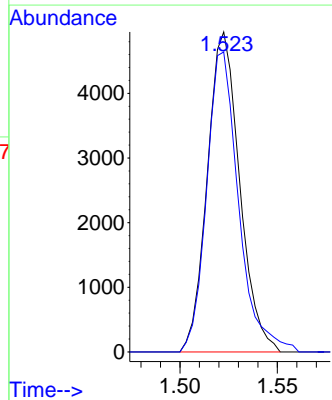
**Manual Integrations**  
**APPROVED**  
 MMDadoda  
 5/28/2021 3:06:28 PM

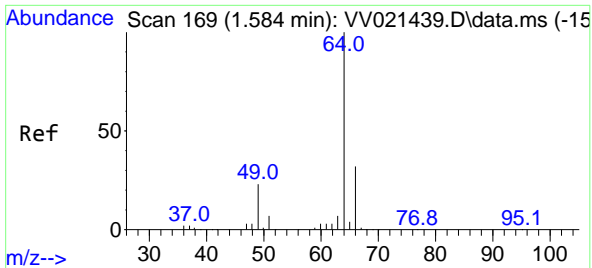


#6  
 Bromomethane  
 Concen: 2.39 ug/L  
 RT: 1.523 min Scan# 150  
 Delta R.T. -0.000 min  
 Lab File: VV021445.D  
 Acq: 27 May 2021 16:11



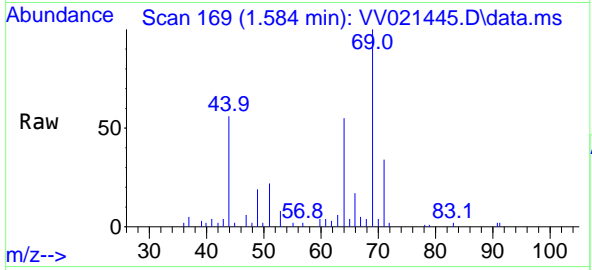
Tgt Ion: 94 Resp: 5708  
 Ion Ratio Lower Upper  
 94 100  
 96 93.8 65.2 121.0





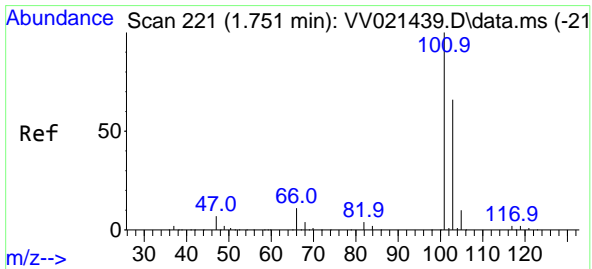
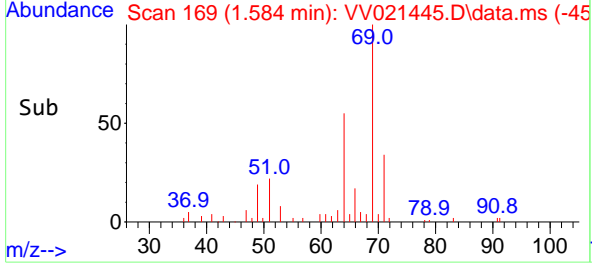
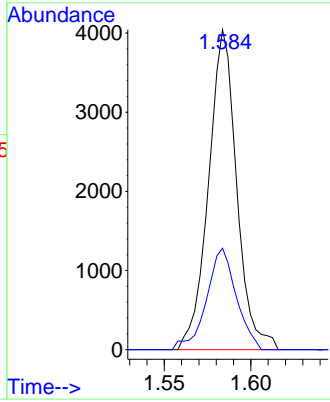
#8  
 Chloroethane  
 Concen: 2.31 ug/L  
 RT: 1.584 min Scan# 169  
 Delta R.T. -0.000 min  
 Lab File: VV021445.D  
 Acq: 27 May 2021 16:11

Instrument : MSVOA\_V  
 ClientSampled : MDL-WATER-QT3-2021-05

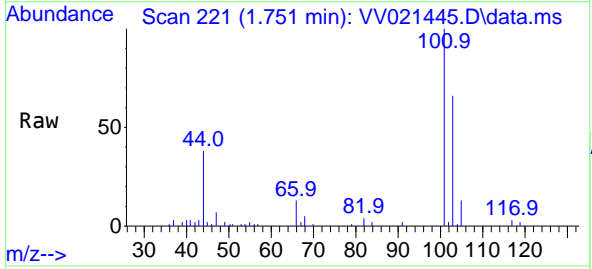


Tgt Ion: 64 Resp: 4581  
 Ion Ratio Lower Upper  
 64 100  
 66 31.7 22.5 41.9

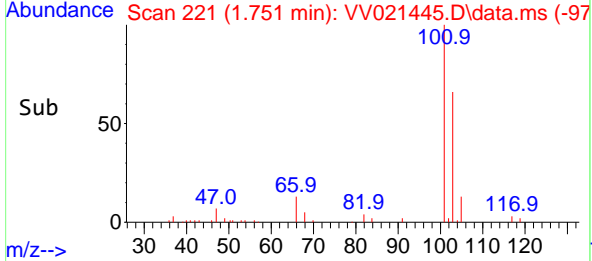
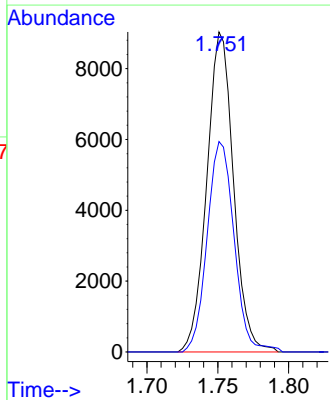
Manual Integrations  
**APPROVED**  
 MMDadoda  
 5/28/2021 3:06:28 PM

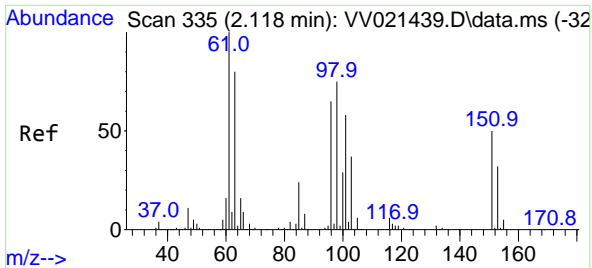


#9  
 Trichlorofluoromethane  
 Concen: 2.29 ug/L  
 RT: 1.751 min Scan# 221  
 Delta R.T. -0.000 min  
 Lab File: VV021445.D  
 Acq: 27 May 2021 16:11



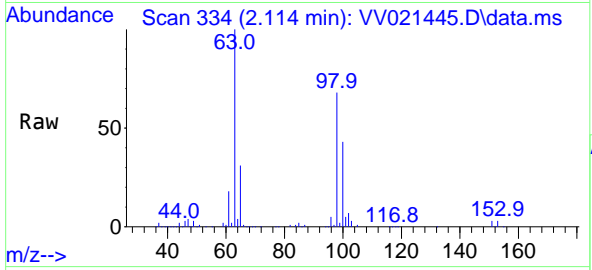
Tgt Ion: 101 Resp: 11853  
 Ion Ratio Lower Upper  
 101 100  
 103 66.3 52.1 78.1





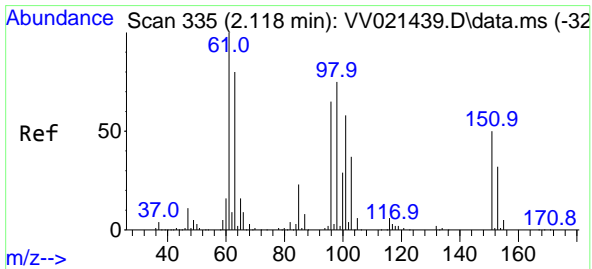
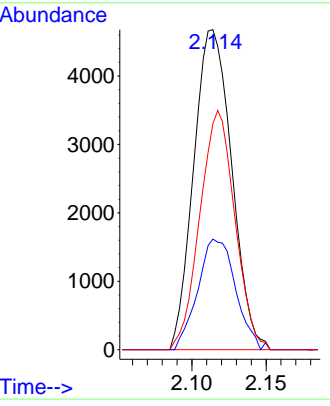
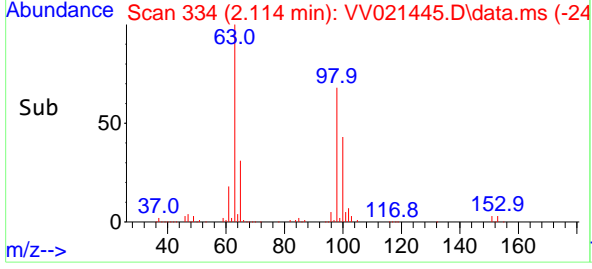
#10  
 1,1,2-Trichloro-1,2,2-trifluoroethane  
 Concen: 2.77 ug/L  
 RT: 2.114 min Scan# 334  
 Delta R.T. -0.003 min  
 Lab File: VV021445.D  
 Acq: 27 May 2021 16:11

Instrument : MSVOA\_V  
 Client Sampled : MDL-WATER-QT3-2021-05

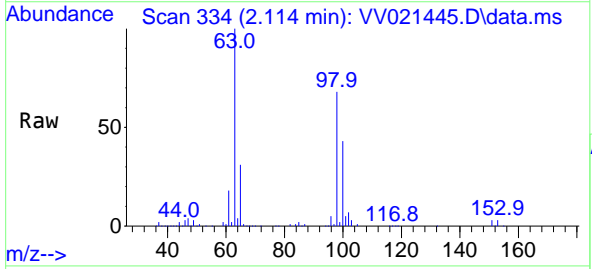


Tgt Ion: 101 Resp: 8321  
 Ion Ratio Lower Upper  
 101 100  
 85 34.2 32.6 49.0  
 151 69.0 70.0 105.0#

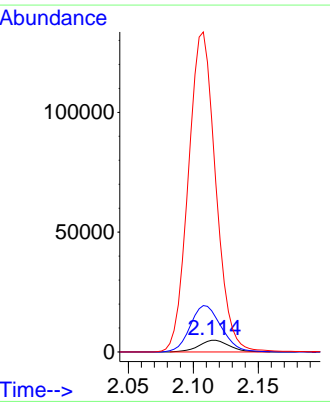
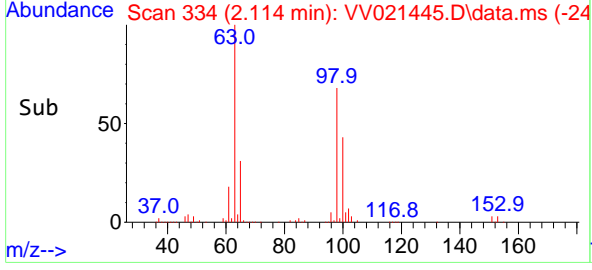
Manual Integrations APPROVED  
 MMDadoda  
 5/28/2021 3:06:28 PM

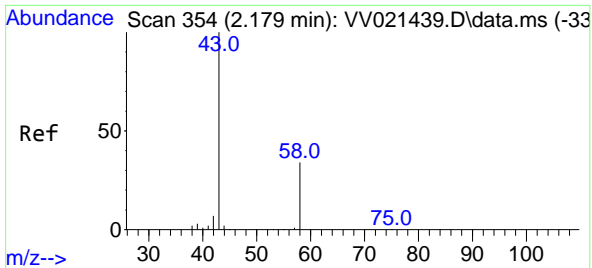


#12  
 1,1-Dichloroethene  
 Concen: 2.76 ug/L  
 RT: 2.114 min Scan# 334  
 Delta R.T. -0.003 min  
 Lab File: VV021445.D  
 Acq: 27 May 2021 16:11



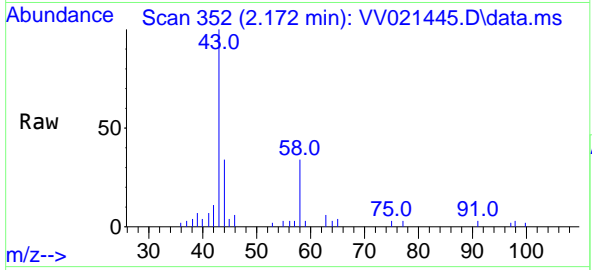
Tgt Ion: 96 Resp: 7962  
 Ion Ratio Lower Upper  
 96 100  
 61 353.1 107.7 200.1#  
 63 1998.1 86.6 160.8#





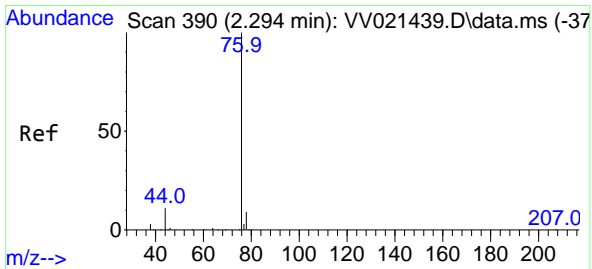
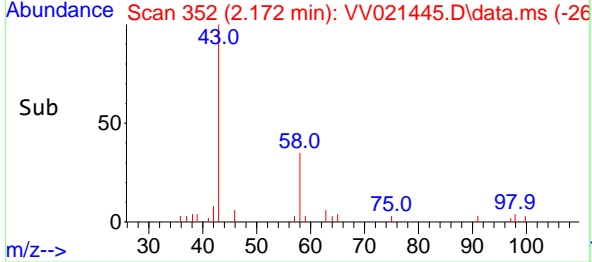
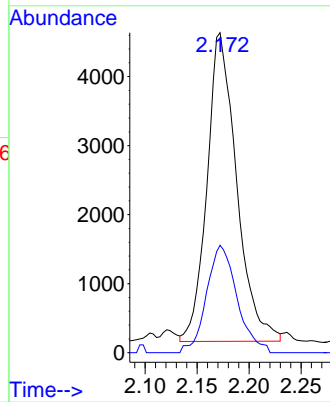
#13  
 Acetone  
 Concen: 4.43 ug/L  
 RT: 2.172 min Scan# 352  
 Delta R.T. -0.007 min  
 Lab File: VV021445.D  
 Acq: 27 May 2021 16:11

**Instrument :**  
 MSVOA\_V  
**ClientSampled :**  
 MDL-WATER-QT3-2021-05

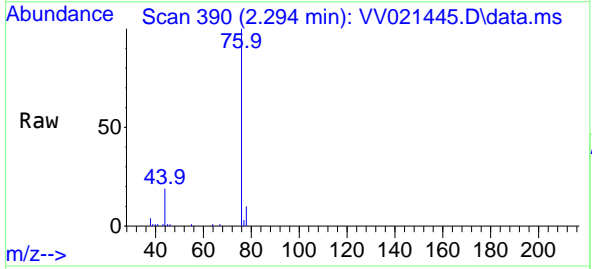


Tgt Ion: 43 Resp: 8856  
 Ion Ratio Lower Upper  
 43 100  
 58 32.4 0.0 0.2#

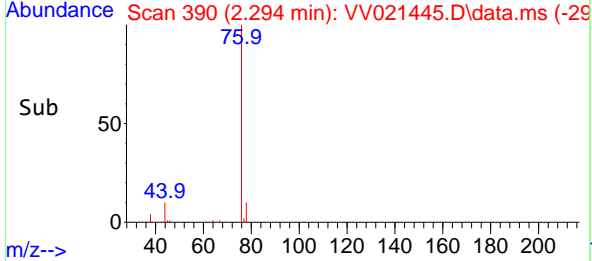
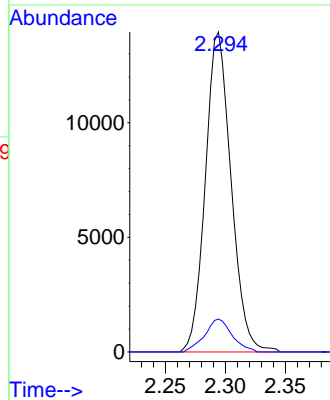
**Manual Integrations**  
**APPROVED**  
 MMDadoda  
 5/28/2021 3:06:28 PM



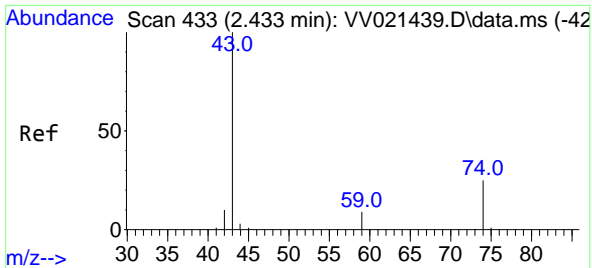
#14  
 Carbon disulfide  
 Concen: 2.29 ug/L  
 RT: 2.294 min Scan# 390  
 Delta R.T. -0.000 min  
 Lab File: VV021445.D  
 Acq: 27 May 2021 16:11



Tgt Ion: 76 Resp: 20834  
 Ion Ratio Lower Upper  
 76 100  
 78 10.3 7.3 10.9

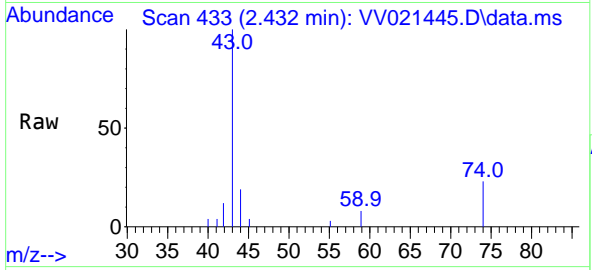






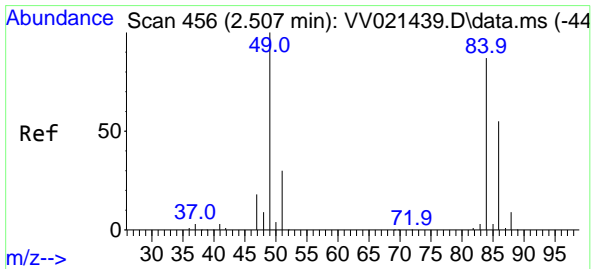
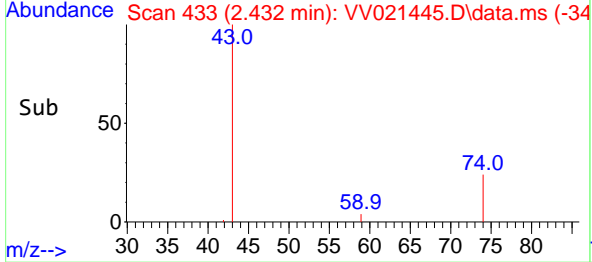
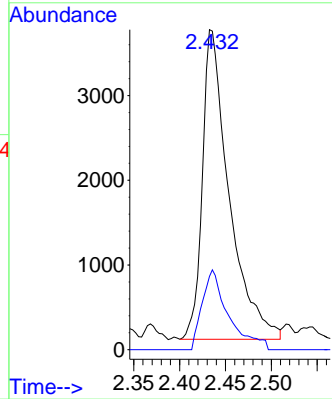
#15  
 Methyl Acetate  
 Concen: 2.16 ug/L  
 RT: 2.432 min Scan# 433  
 Delta R.T. -0.000 min  
 Lab File: VV021445.D  
 Acq: 27 May 2021 16:11

**Instrument :**  
 MSVOA\_V  
**Client Sampled :**  
 MDL-WATER-QT3-2021-05

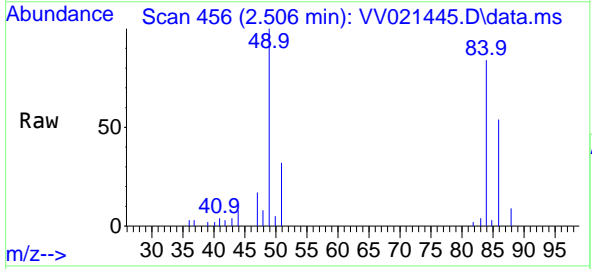


Tgt Ion: 43 Resp: 7406  
 Ion Ratio Lower Upper  
 43 100  
 74 24.7 20.4 30.6

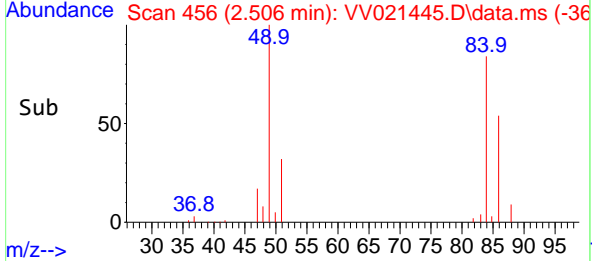
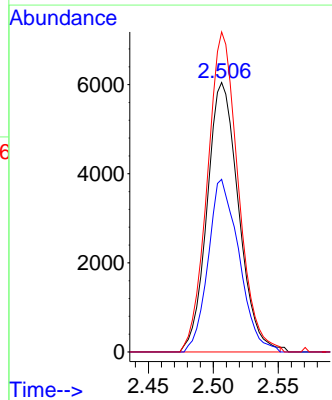
**Manual Integrations**  
**APPROVED**  
 MMDadoda  
 5/28/2021 3:06:28 PM

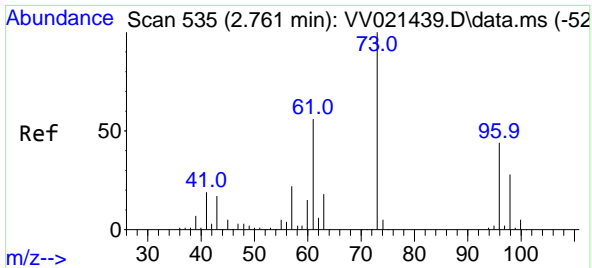


#16  
 Methylene chloride  
 Concen: 2.81 ug/L  
 RT: 2.506 min Scan# 456  
 Delta R.T. -0.000 min  
 Lab File: VV021445.D  
 Acq: 27 May 2021 16:11



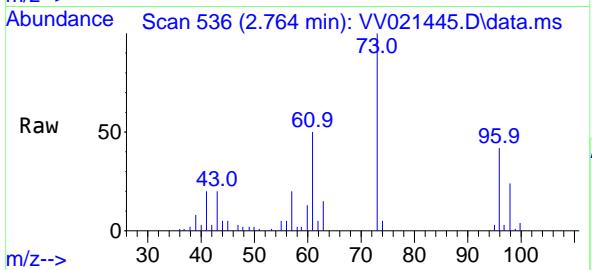
Tgt Ion: 84 Resp: 10185  
 Ion Ratio Lower Upper  
 84 100  
 86 64.1 44.1 81.9  
 49 118.8 80.8 150.0





#17  
 trans-1,2-Dichloroethene  
 Concen: 2.42 ug/L  
 RT: 2.764 min Scan# 536  
 Delta R.T. 0.003 min  
 Lab File: VV021445.D  
 Acq: 27 May 2021 16:11

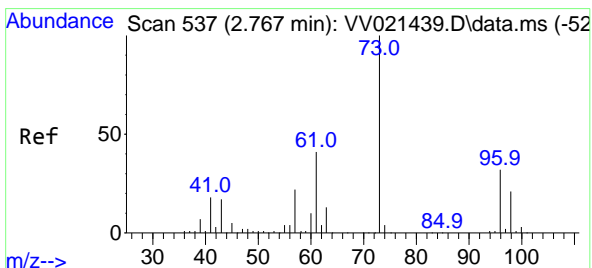
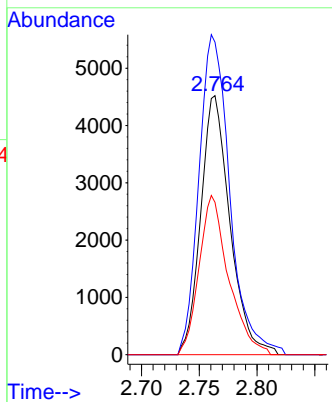
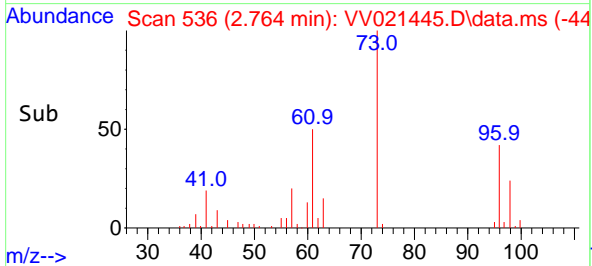
Instrument :  
 MSVOA\_V  
 ClientSampleId :  
 MDL-WATER-QT3-2021-05



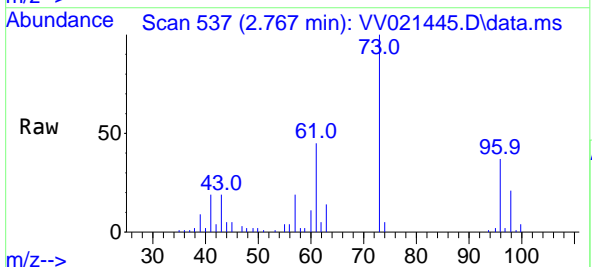
Tgt Ion: 96 Resp: 7980  
 Ion Ratio Lower Upper  
 96 100  
 61 120.7 88.8 165.0  
 98 58.8 44.4 82.4

Manual Integrations  
 APPROVED

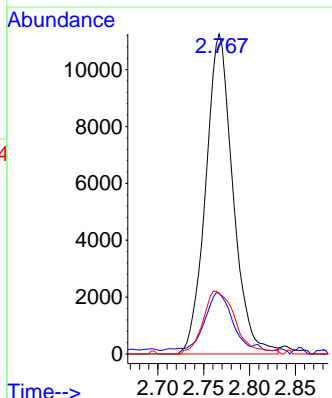
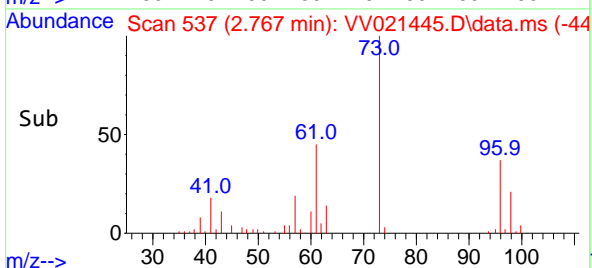
MMDadoda  
 5/28/2021 3:06:28 PM

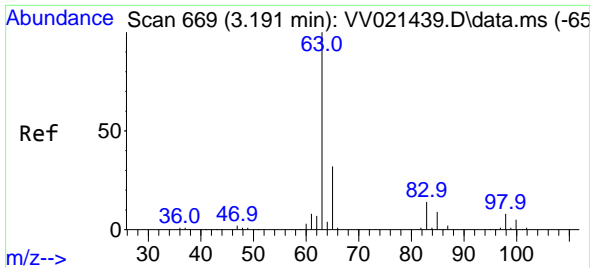


#18  
 Methyl tert-butyl Ether  
 Concen: 2.23 ug/L  
 RT: 2.767 min Scan# 537  
 Delta R.T. -0.000 min  
 Lab File: VV021445.D  
 Acq: 27 May 2021 16:11



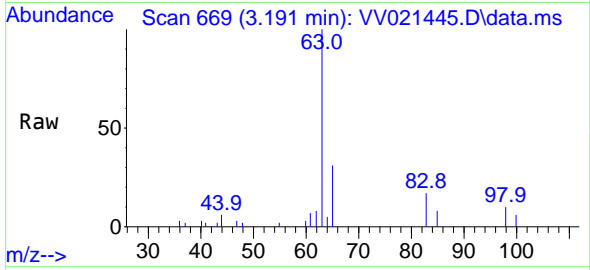
Tgt Ion: 73 Resp: 23252  
 Ion Ratio Lower Upper  
 73 100  
 43 18.3 13.9 20.9  
 57 23.0 17.1 25.7





#19  
 1,1-Dichloroethane  
 Concen: 2.19 ug/L  
 RT: 3.191 min Scan# 669  
 Delta R.T. -0.000 min  
 Lab File: VV021445.D  
 Acq: 27 May 2021 16:11

Instrument : MSVOA\_V  
 Client Sampled : MDL-WATER-QT3-2021-05

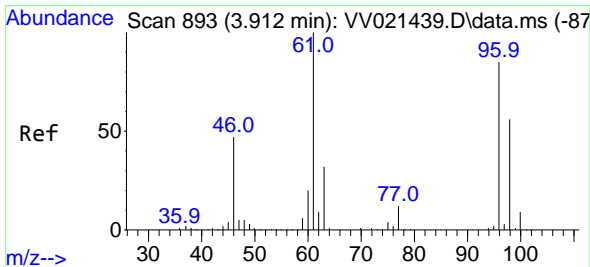
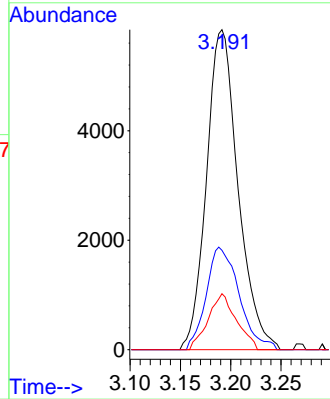
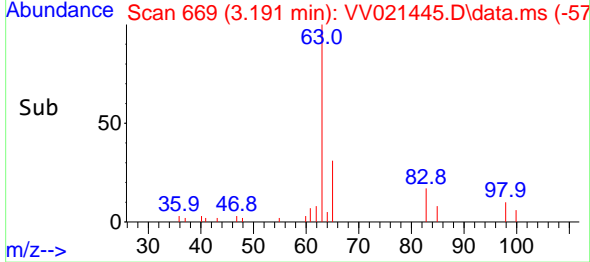


Tgt Ion: 63 Resp: 12772

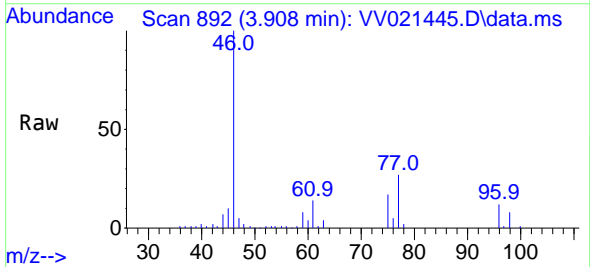
Ion	Ratio	Lower	Upper
63	100		
65	31.1	22.5	41.7
83	17.5	10.1	18.9

Manual Integrations  
 APPROVED

MMDadoda  
 5/28/2021 3:06:28 PM

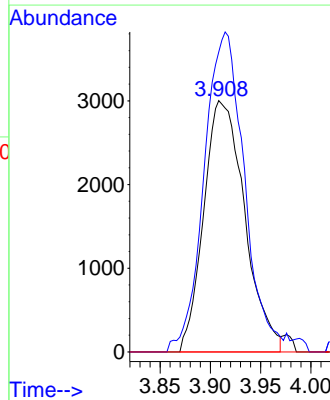
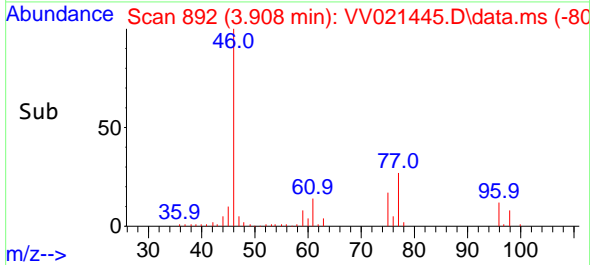


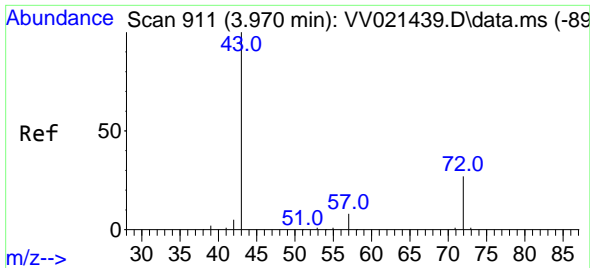
#20  
 cis-1,2-Dichloroethene  
 Concen: 2.31 ug/L  
 RT: 3.908 min Scan# 892  
 Delta R.T. -0.003 min  
 Lab File: VV021445.D  
 Acq: 27 May 2021 16:11



Tgt Ion: 96 Resp: 8502

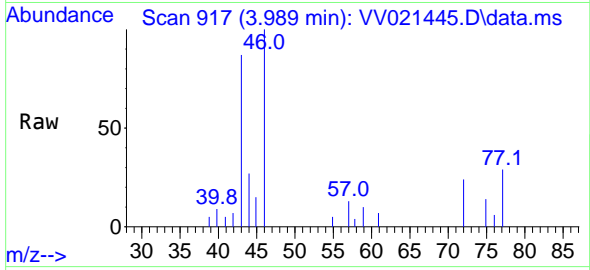
Ion	Ratio	Lower	Upper
96	100		
61	119.4	82.4	153.0
68	0.0	0.0	0.0





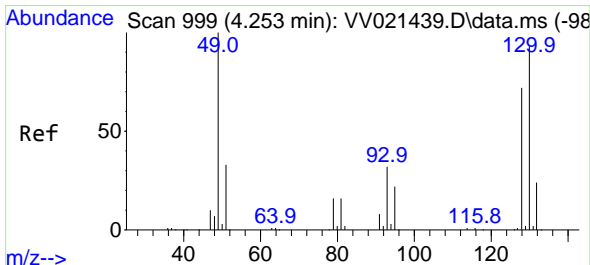
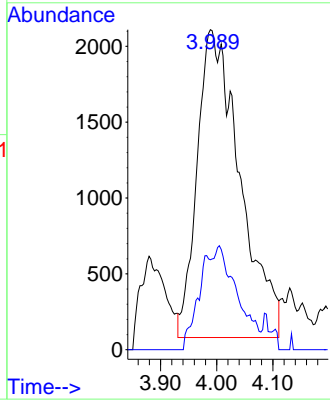
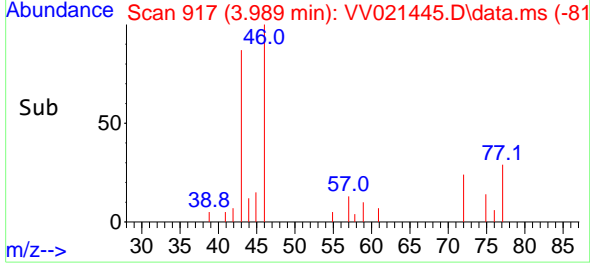
#22  
 2-Butanone  
 Concen: 4.24 ug/L m  
 RT: 3.989 min Scan# 917  
 Delta R.T. 0.019 min  
 Lab File: VV021445.D  
 Acq: 27 May 2021 16:11

**Instrument :**  
 MSVOA\_V  
**ClientSampleId :**  
 MDL-WATER-QT3-2021-05

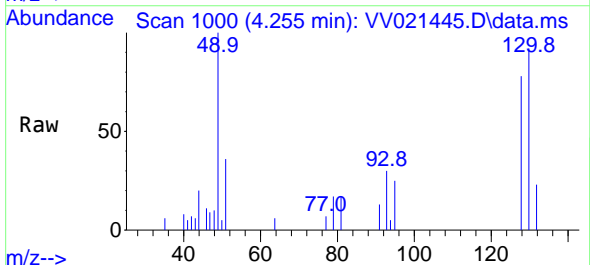


Tgt Ion: 43 Resp: 10744  
 Ion Ratio Lower Upper  
 43 100  
 72 2.6 13.1 39.1#

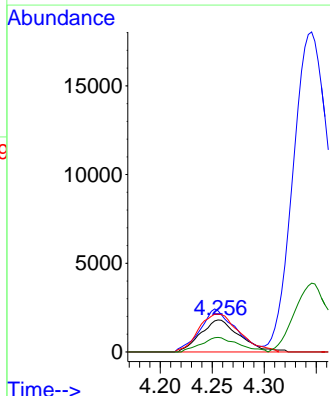
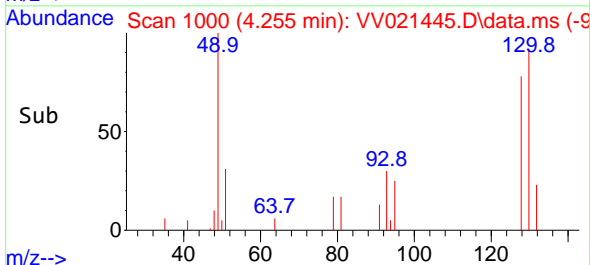
**Manual Integrations**  
**APPROVED**  
 MMDadoda  
 5/28/2021 3:06:28 PM

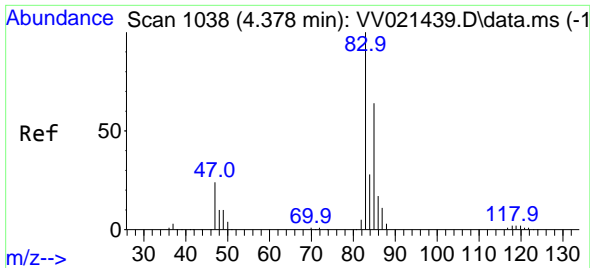


#23  
 Bromochloromethane  
 Concen: 2.29 ug/L  
 RT: 4.255 min Scan# 1000  
 Delta R.T. 0.003 min  
 Lab File: VV021445.D  
 Acq: 27 May 2021 16:11



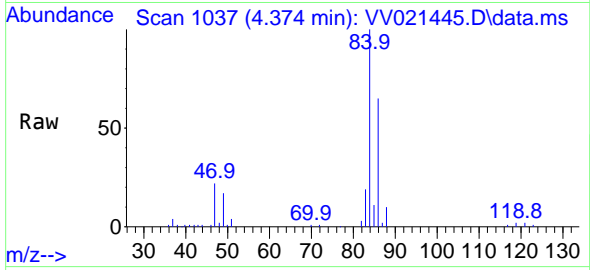
Tgt Ion:128 Resp: 4680  
 Ion Ratio Lower Upper  
 128 100  
 49 128.4 96.8 179.8  
 130 118.2 90.2 167.6  
 51 45.7 36.9 55.3





#25  
 Chloroform  
 Concen: 2.54 ug/L  
 RT: 4.374 min Scan# 1037  
 Delta R.T. -0.003 min  
 Lab File: VV021445.D  
 Acq: 27 May 2021 16:11

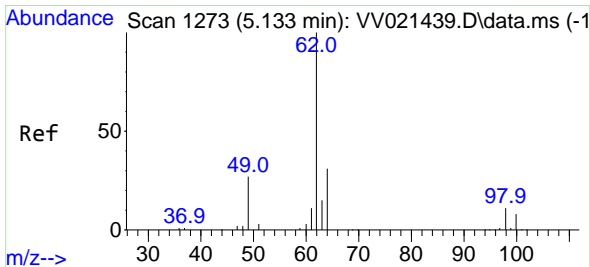
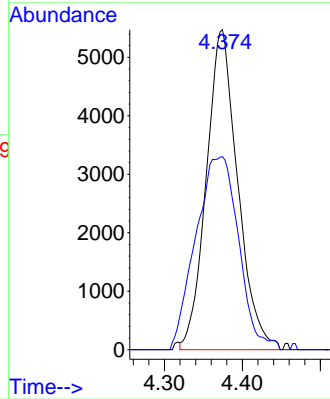
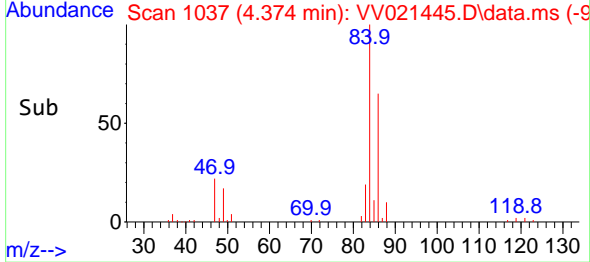
Instrument :  
 MSVOA\_V  
 ClientSampled :  
 MDL-WATER-QT3-2021-05



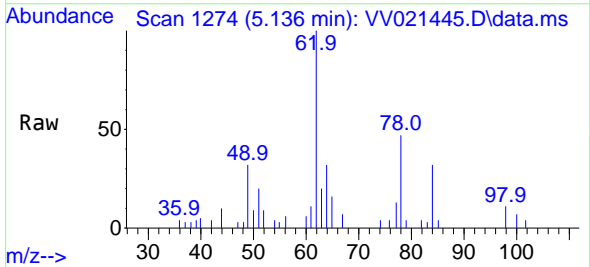
Tgt Ion: 83 Resp: 15338  
 Ion Ratio Lower Upper  
 83 100  
 85 60.3 45.1 83.7

Manual Integrations  
 APPROVED

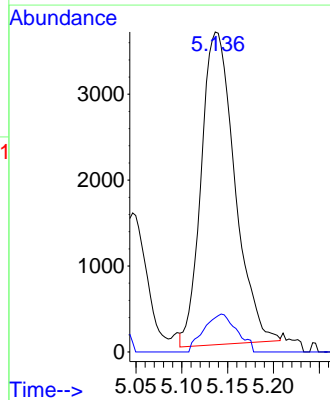
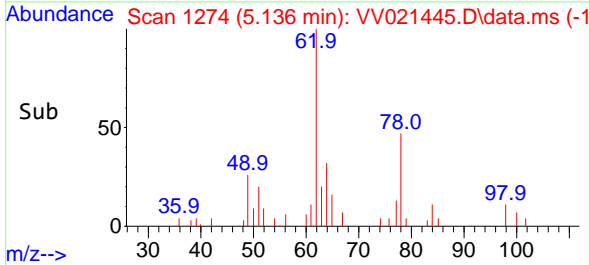
MMDadoda  
 5/28/2021 3:06:28 PM

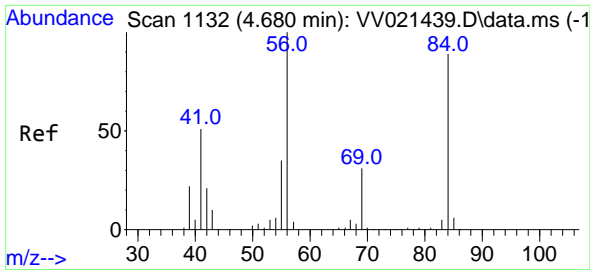


#27  
 1,2-Dichloroethane  
 Concen: 2.22 ug/L  
 RT: 5.136 min Scan# 1274  
 Delta R.T. 0.003 min  
 Lab File: VV021445.D  
 Acq: 27 May 2021 16:11



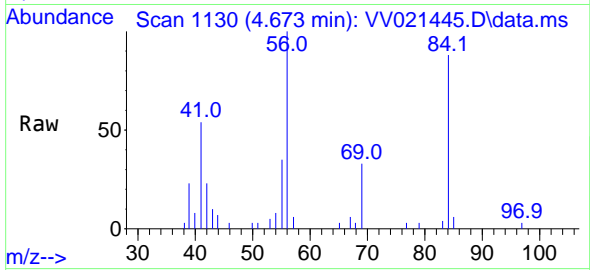
Tgt Ion: 62 Resp: 9253  
 Ion Ratio Lower Upper  
 62 100  
 98 10.7 8.6 12.8





#29  
 Cyclohexane  
 Concen: 2.30 ug/L  
 RT: 4.673 min Scan# 1130  
 Delta R.T. -0.007 min  
 Lab File: VV021445.D  
 Acq: 27 May 2021 16:11

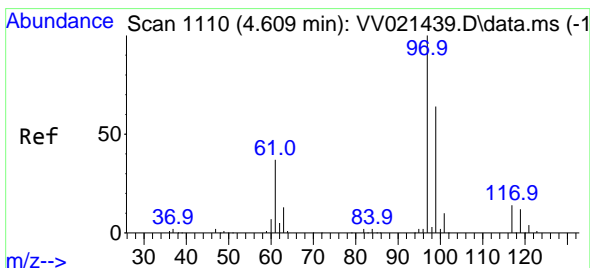
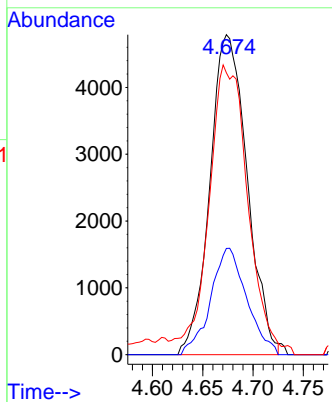
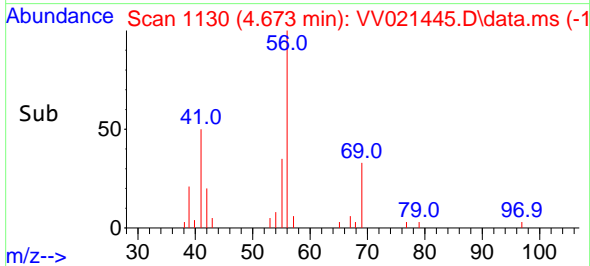
Instrument :  
 MSVOA\_V  
 ClientSampleId :  
 MDL-WATER-QT3-2021-05



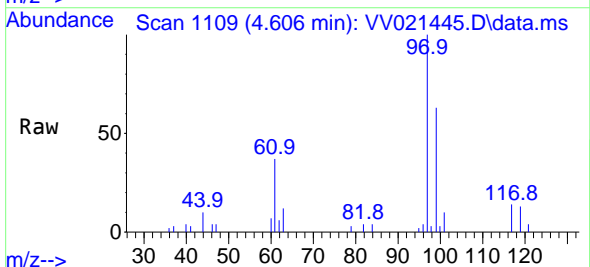
Tgt Ion: 56 Resp: 12345  
 Ion Ratio Lower Upper  
 56 100  
 69 32.2 24.9 37.3  
 84 45.4 73.7 110.5#

Manual Integrations  
 APPROVED

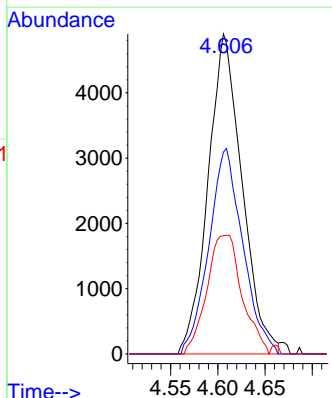
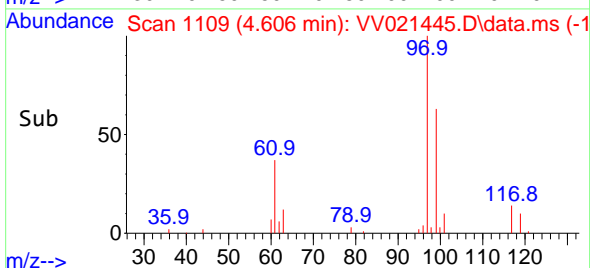
MMDadoda  
 5/28/2021 3:06:28 PM

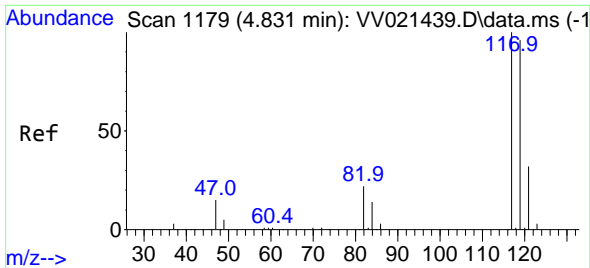


#30  
 1,1,1-Trichloroethane  
 Concen: 2.15 ug/L  
 RT: 4.606 min Scan# 1109  
 Delta R.T. -0.003 min  
 Lab File: VV021445.D  
 Acq: 27 May 2021 16:11



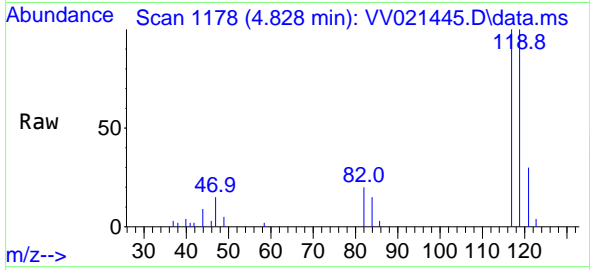
Tgt Ion: 97 Resp: 12243  
 Ion Ratio Lower Upper  
 97 100  
 99 64.2 51.8 77.6  
 61 38.5 30.2 45.4





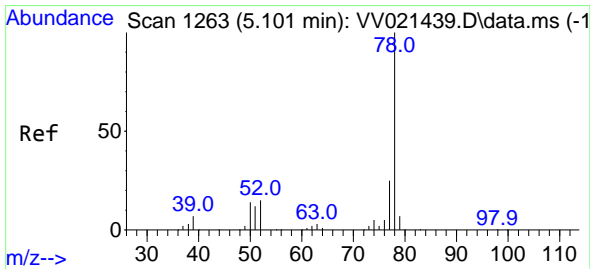
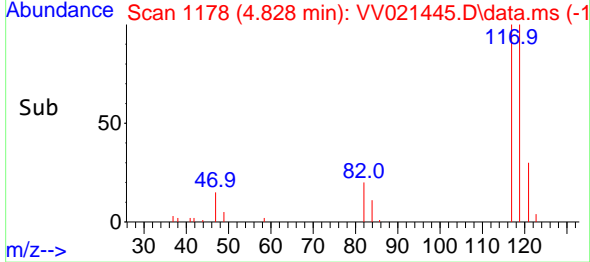
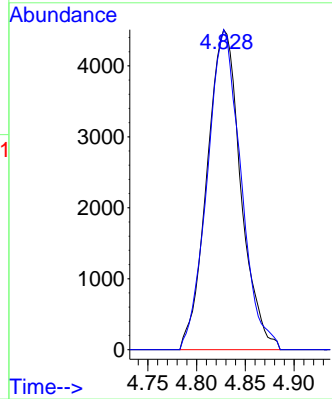
#31  
 Carbon tetrachloride  
 Concen: 2.10 ug/L  
 RT: 4.828 min Scan# 1178  
 Delta R.T. -0.003 min  
 Lab File: VV021445.D  
 Acq: 27 May 2021 16:11

**Instrument :**  
 MSVOA\_V  
**ClientSampled :**  
 MDL-WATER-QT3-2021-05

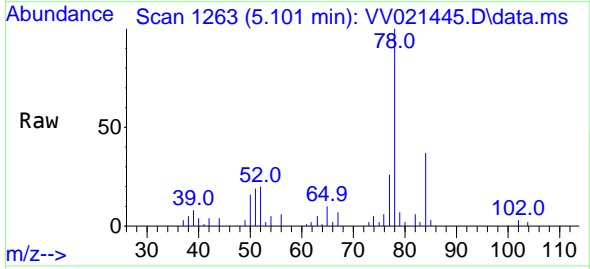


Tgt Ion:117 Resp: 10867  
 Ion Ratio Lower Upper  
 117 100  
 119 99.4 76.8 115.2

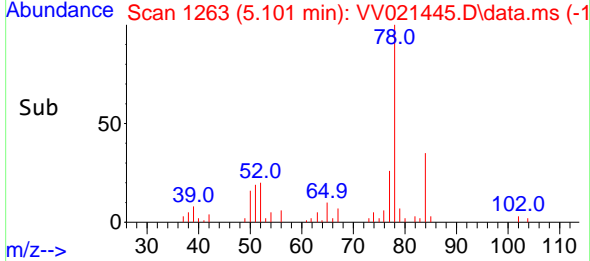
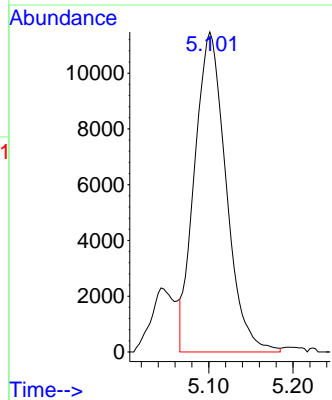
**Manual Integrations**  
**APPROVED**  
 MMDadoda  
 5/28/2021 3:06:28 PM

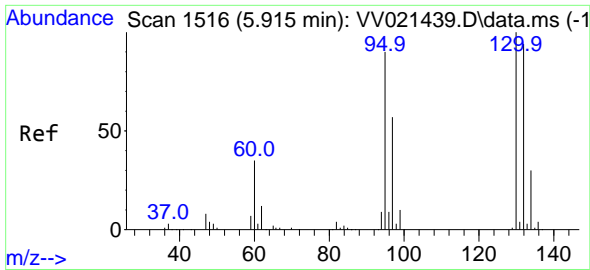


#33  
 Benzene  
 Concen: 2.25 ug/L  
 RT: 5.101 min Scan# 1263  
 Delta R.T. -0.000 min  
 Lab File: VV021445.D  
 Acq: 27 May 2021 16:11



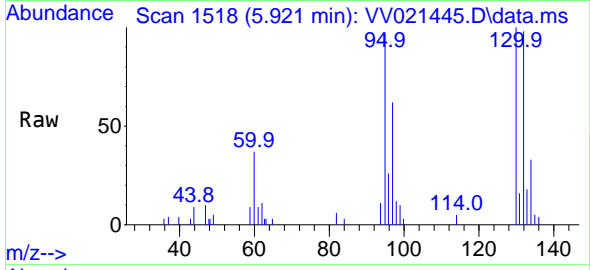
Tgt Ion: 78 Resp: 29732





#34  
 Trichloroethene  
 Concen: 2.35 ug/L  
 RT: 5.921 min Scan# 1518  
 Delta R.T. 0.006 min  
 Lab File: VV021445.D  
 Acq: 27 May 2021 16:11

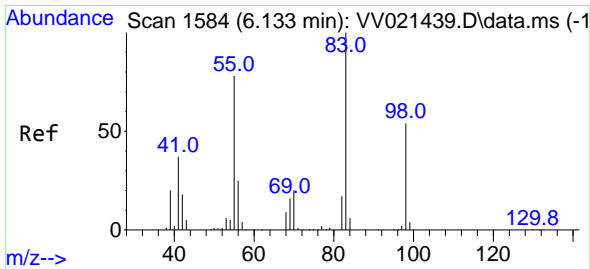
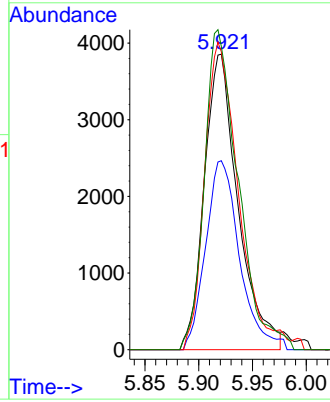
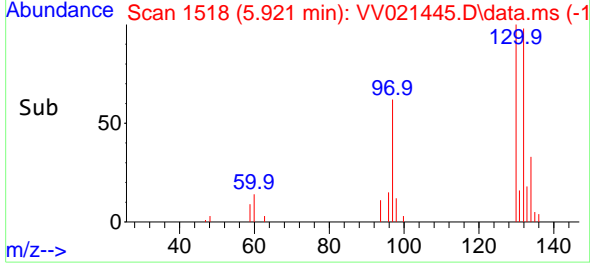
Instrument :  
 MSVOA\_V  
 ClientSampled :  
 MDL-WATER-QT3-2021-05



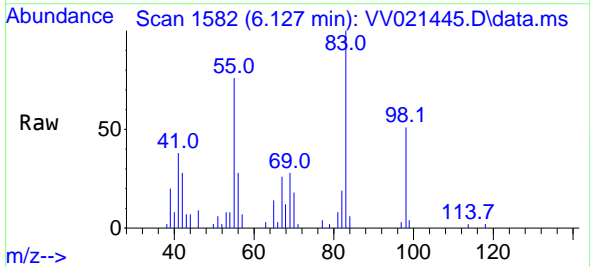
Tgt Ion: 95 Resp: 8427  
 Ion Ratio Lower Upper  
 95 100  
 97 64.0 44.3 82.3  
 132 100.8 73.2 136.0  
 130 102.6 77.7 144.3

Manual Integrations  
 APPROVED

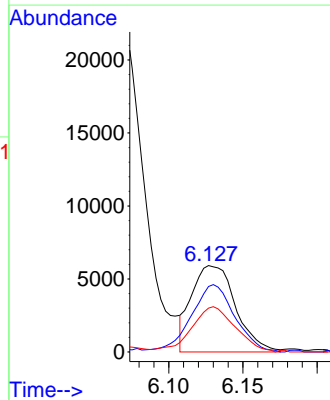
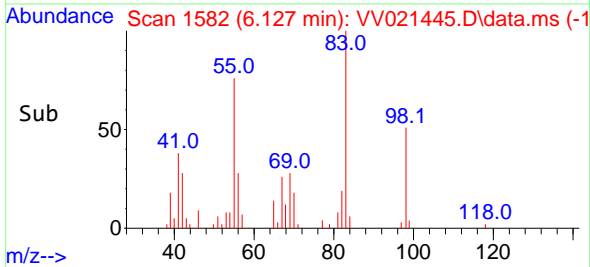
MMDadoda  
 5/28/2021 3:06:28 PM



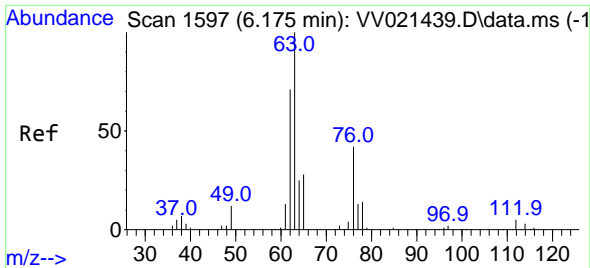
#35  
 Methylcyclohexane  
 Concen: 2.12 ug/L  
 RT: 6.127 min Scan# 1582  
 Delta R.T. -0.007 min  
 Lab File: VV021445.D  
 Acq: 27 May 2021 16:11



Tgt Ion: 83 Resp: 12215  
 Ion Ratio Lower Upper  
 83 100  
 55 77.3 58.0 87.0  
 98 52.1 40.8 61.2

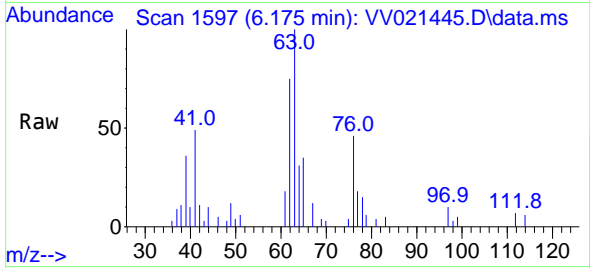






#37  
 1,2-Dichloropropane  
 Concen: 2.31 ug/L  
 RT: 6.175 min Scan# 1597  
 Delta R.T. -0.000 min  
 Lab File: VV021445.D  
 Acq: 27 May 2021 16:11

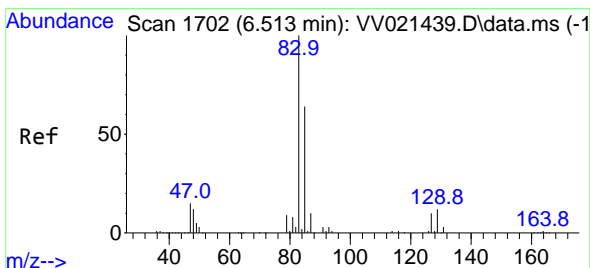
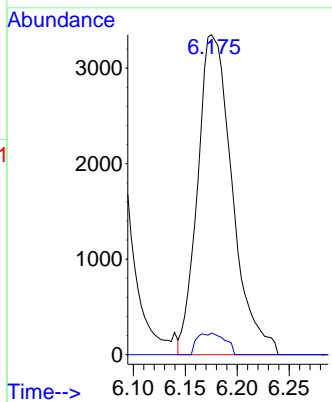
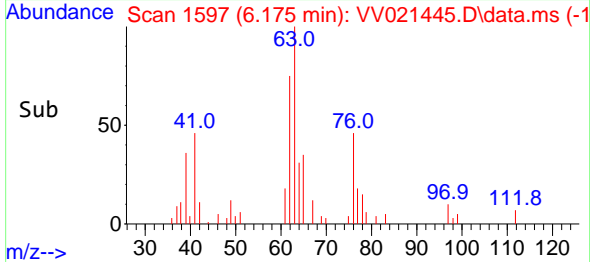
Instrument : MSVOA\_V  
 ClientSampled : MDL-WATER-QT3-2021-05



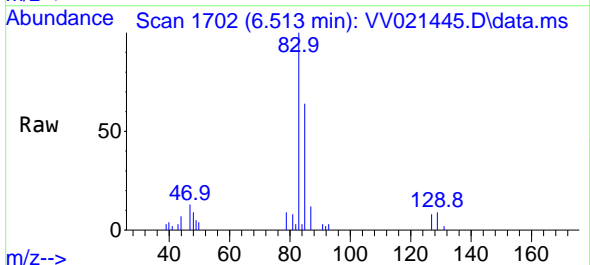
Tgt Ion: 63 Resp: 7769  
 Ion Ratio Lower Upper  
 63 100  
 112 2.4 4.0 6.0#

Manual Integrations  
 APPROVED

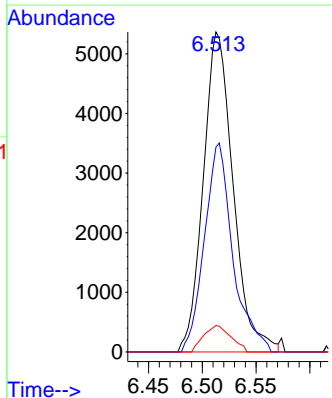
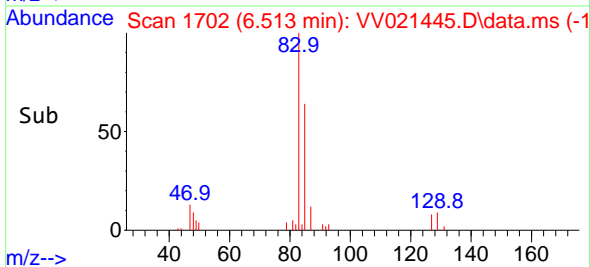
MMDadoda  
 5/28/2021 3:06:28 PM

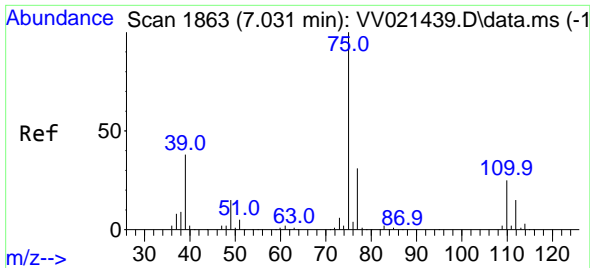


#38  
 Bromodichloromethane  
 Concen: 2.19 ug/L  
 RT: 6.513 min Scan# 1702  
 Delta R.T. -0.000 min  
 Lab File: VV021445.D  
 Acq: 27 May 2021 16:11



Tgt Ion: 83 Resp: 10363  
 Ion Ratio Lower Upper  
 83 100  
 85 64.0 44.6 82.8  
 127 8.3 7.6 11.4



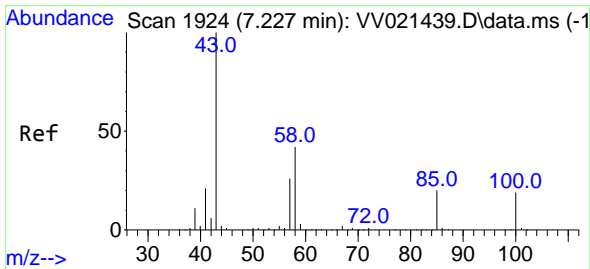
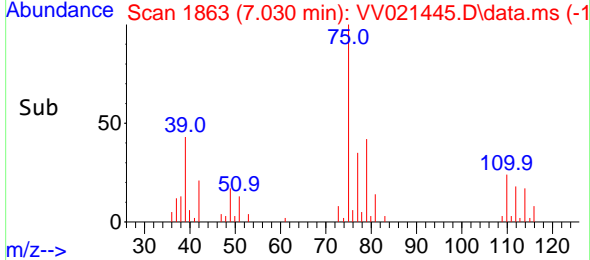
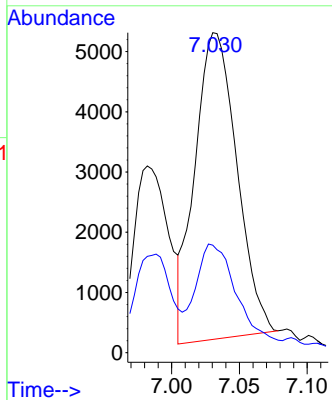
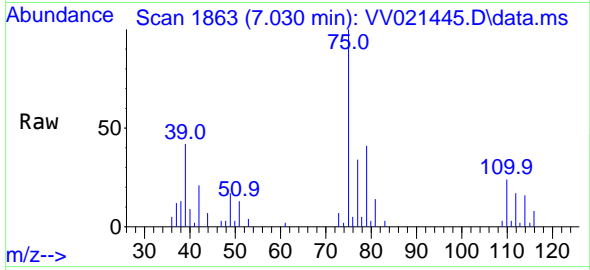


#39  
 cis-1,3-Dichloropropene  
 Concen: 1.94 ug/L  
 RT: 7.030 min Scan# 1863  
 Delta R.T. -0.000 min  
 Lab File: VV021445.D  
 Acq: 27 May 2021 16:11

Tgt Ion: 75 Resp: 10992  
 Ion Ratio Lower Upper  
 75 100  
 77 33.6 22.0 41.0

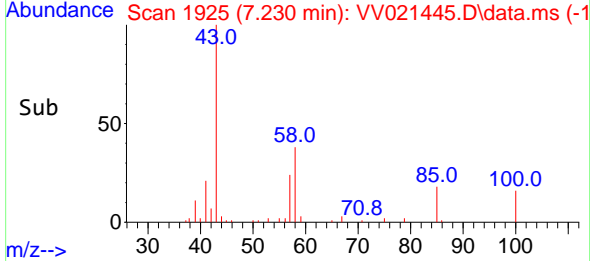
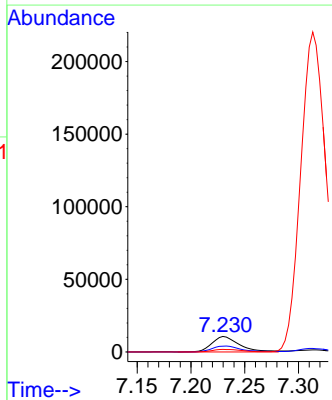
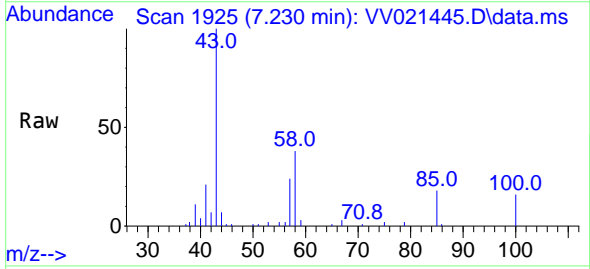
**Instrument :**  
 MSVOA\_V  
**ClientSampled :**  
 MDL-WATER-QT3-2021-05

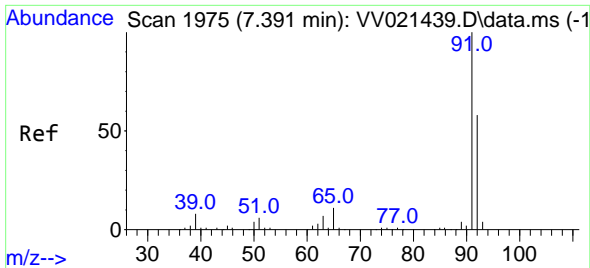
**Manual Integrations**  
**APPROVED**  
 MMDadoda  
 5/28/2021 3:06:28 PM



#40  
 4-Methyl-2-pentanone  
 Concen: 4.18 ug/L  
 RT: 7.230 min Scan# 1925  
 Delta R.T. 0.003 min  
 Lab File: VV021445.D  
 Acq: 27 May 2021 16:11

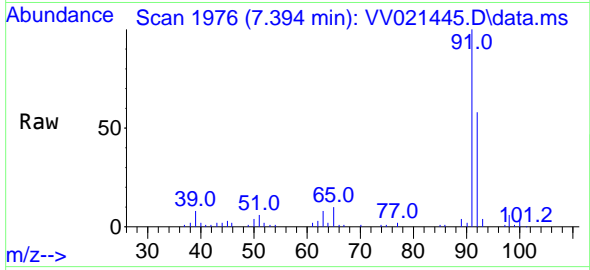
Tgt Ion: 43 Resp: 19075  
 Ion Ratio Lower Upper  
 43 100  
 58 40.3 33.5 50.3  
 100 17.3 14.8 22.2





#42  
 Toluene  
 Concen: 2.78 ug/L  
 RT: 7.394 min Scan# 1976  
 Delta R.T. 0.003 min  
 Lab File: VV021445.D  
 Acq: 27 May 2021 16:11

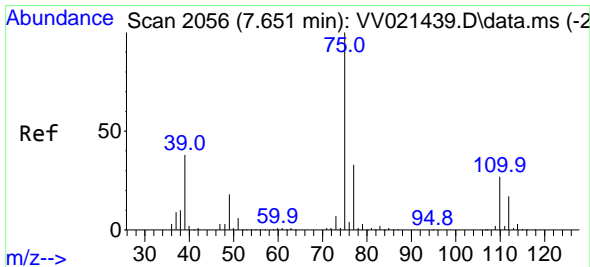
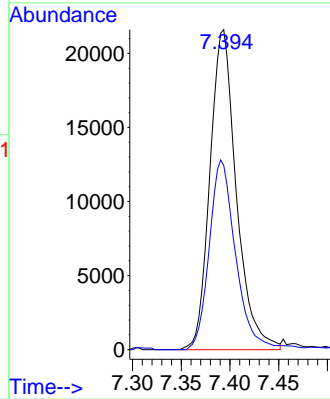
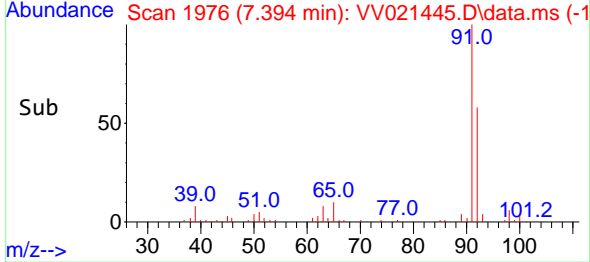
Instrument :  
 MSVOA\_V  
 ClientSampled :  
 MDL-WATER-QT3-2021-05



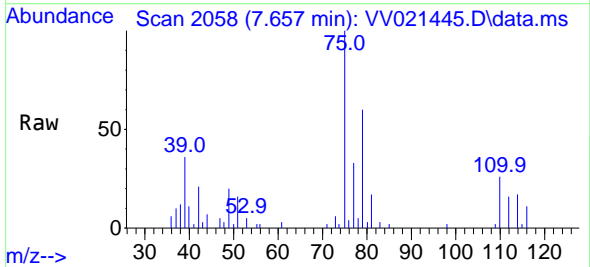
Tgt Ion: 91 Resp: 40731  
 Ion Ratio Lower Upper  
 91 100  
 92 57.6 40.9 75.9

Manual Integrations  
 APPROVED

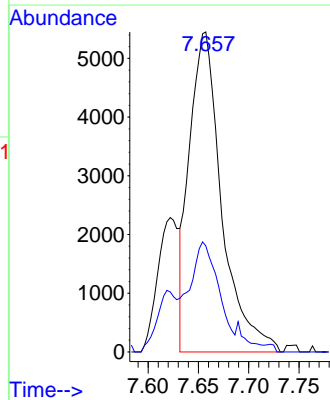
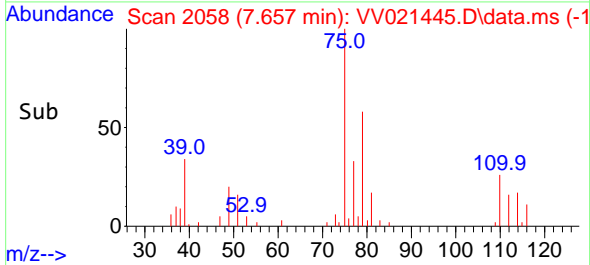
MMDadoda  
 5/28/2021 3:06:28 PM

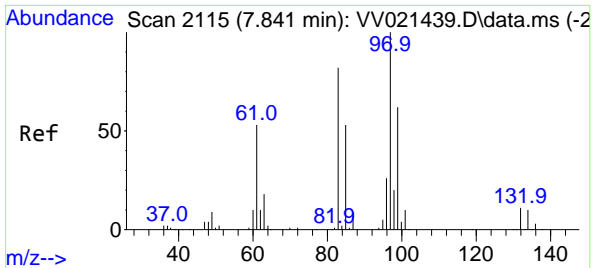


#44  
 trans-1,3-Dichloropropene  
 Concen: 2.27 ug/L  
 RT: 7.657 min Scan# 2058  
 Delta R.T. 0.006 min  
 Lab File: VV021445.D  
 Acq: 27 May 2021 16:11



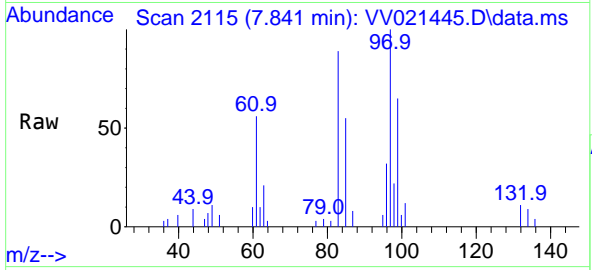
Tgt Ion: 75 Resp: 12180  
 Ion Ratio Lower Upper  
 75 100  
 77 33.2 22.9 42.5





#45  
 1,1,2-Trichloroethane  
 Concen: 2.17 ug/L  
 RT: 7.841 min Scan# 2115  
 Delta R.T. -0.000 min  
 Lab File: VV021445.D  
 Acq: 27 May 2021 16:11

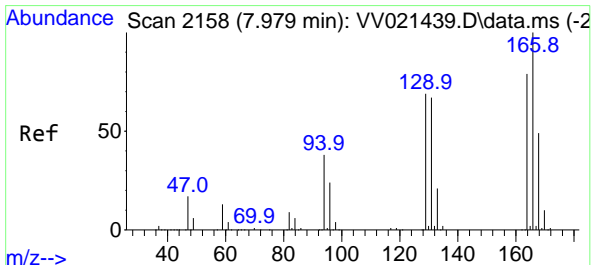
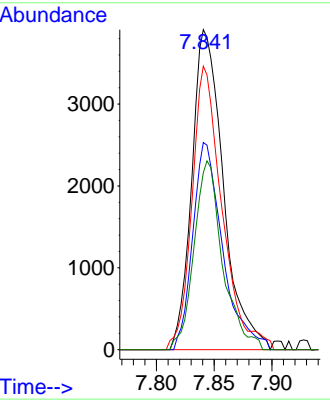
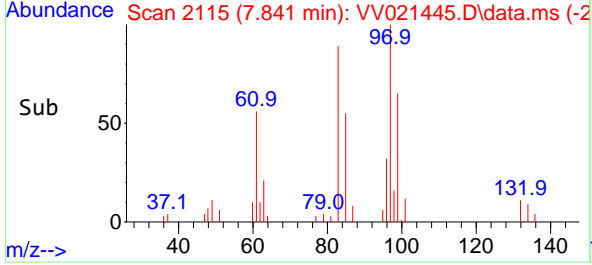
Instrument : MSVOA\_V  
 Client Sampled : MDL-WATER-QT3-2021-05



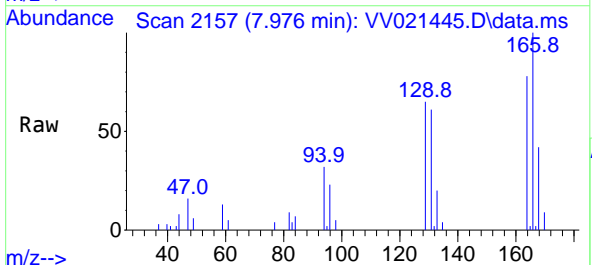
Tgt Ion: 97 Resp: 7423

Ion	Ratio	Lower	Upper
97	100		
99	64.8	43.7	81.1
83	88.6	57.1	106.1
85	55.3	37.0	68.6

Manual Integrations APPROVED  
 MMDadoda  
 5/28/2021 3:06:28 PM

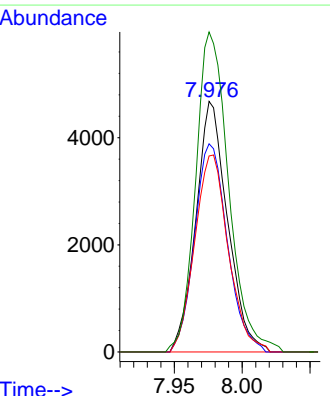
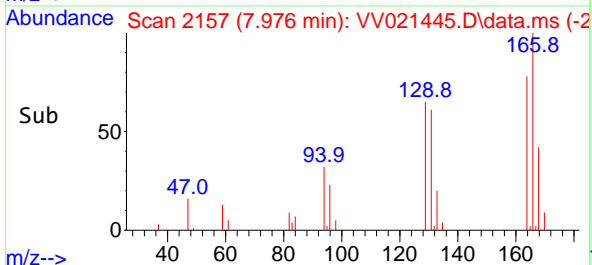


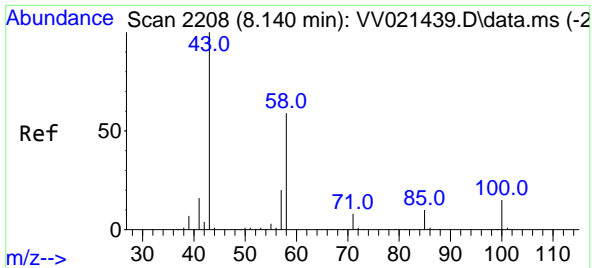
#46  
 Tetrachloroethene  
 Concen: 2.31 ug/L  
 RT: 7.976 min Scan# 2157  
 Delta R.T. -0.003 min  
 Lab File: VV021445.D  
 Acq: 27 May 2021 16:11



Tgt Ion: 164 Resp: 7609

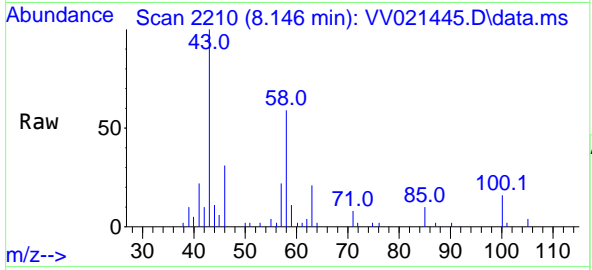
Ion	Ratio	Lower	Upper
164	100		
129	83.1	60.5	112.3
131	78.2	58.7	108.9
166	127.7	88.1	163.5





#48  
 2-Hexanone  
 Concen: 4.04 ug/L  
 RT: 8.146 min Scan# 2210  
 Delta R.T. 0.006 min  
 Lab File: VV021445.D  
 Acq: 27 May 2021 16:11

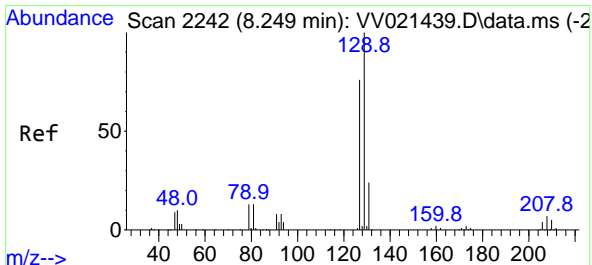
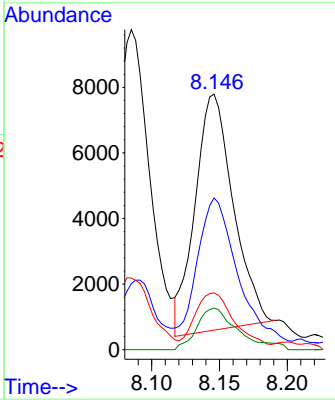
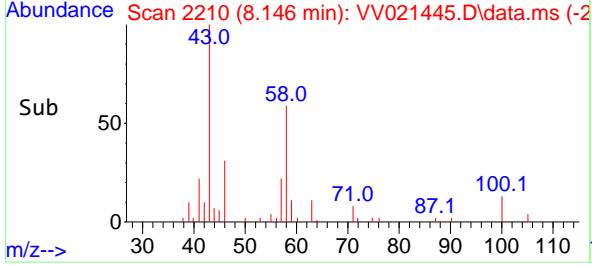
**Instrument :**  
 MSVOA\_V  
**ClientSampled :**  
 MDL-WATER-QT3-2021-05



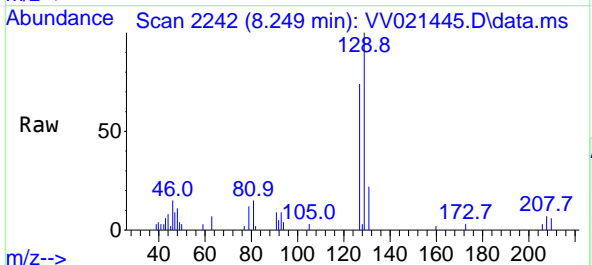
Tgt Ion: 43 Resp: 14145

Ion	Ratio	Lower	Upper
43	100		
58	71.5	47.1	70.7#
57	22.5	16.0	24.0
100	18.9	11.9	17.9#

**Manual Integrations**  
**APPROVED**  
 MMDadoda  
 5/28/2021 3:06:28 PM

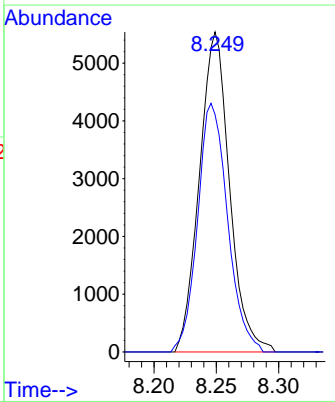
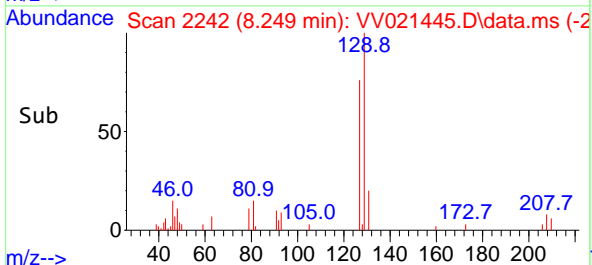


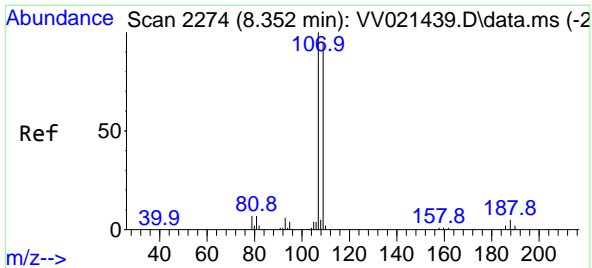
#49  
 Dibromochloromethane  
 Concen: 2.18 ug/L  
 RT: 8.249 min Scan# 2242  
 Delta R.T. -0.000 min  
 Lab File: VV021445.D  
 Acq: 27 May 2021 16:11



Tgt Ion: 129 Resp: 9335

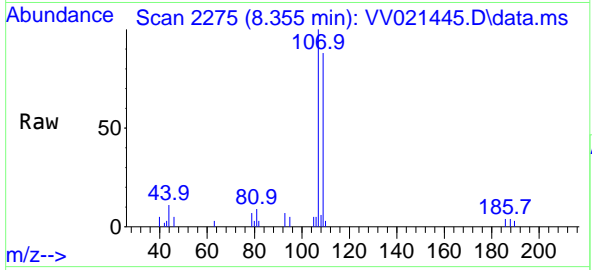
Ion	Ratio	Lower	Upper
129	100		
127	74.2	53.0	98.4





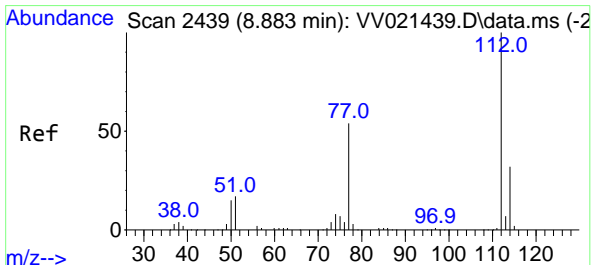
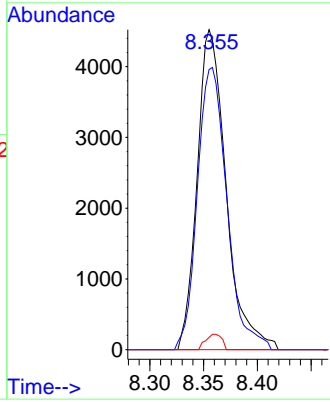
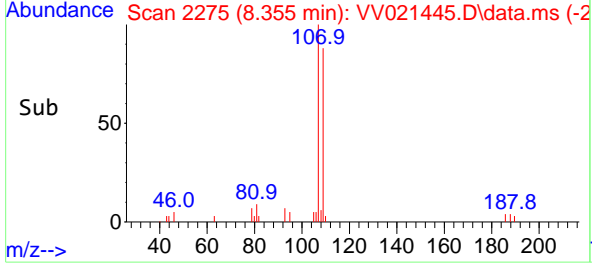
#50  
 1,2-Dibromoethane  
 Concen: 2.25 ug/L  
 RT: 8.355 min Scan# 2275  
 Delta R.T. 0.003 min  
 Lab File: VV021445.D  
 Acq: 27 May 2021 16:11

**Instrument :**  
 MSVOA\_V  
**ClientSampled :**  
 MDL-WATER-QT3-2021-05

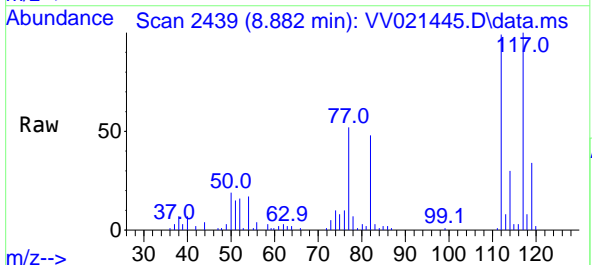


Tgt Ion:107 Resp: 8462  
 Ion Ratio Lower Upper  
 107 100  
 109 87.5 66.7 123.9  
 188 3.8 3.8 5.8#

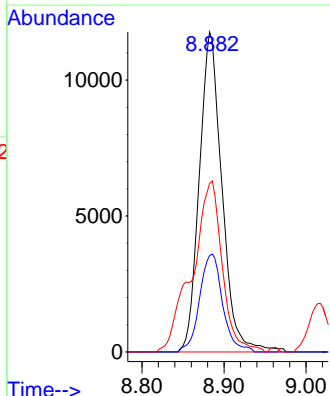
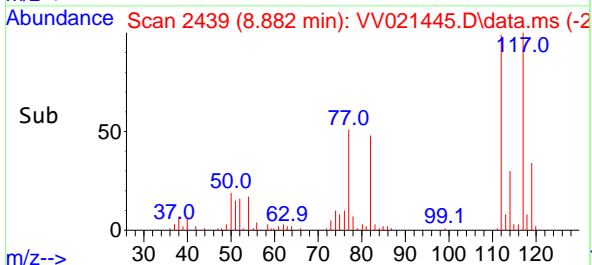
**Manual Integrations**  
**APPROVED**  
 MMDadoda  
 5/28/2021 3:06:28 PM

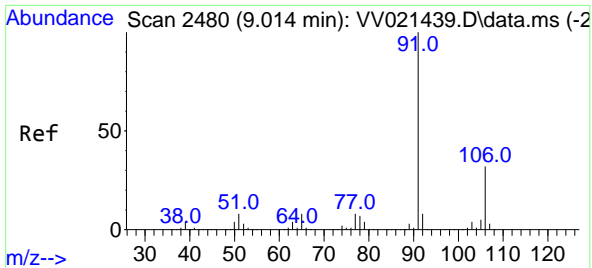


#51  
 Chlorobenzene  
 Concen: 2.33 ug/L  
 RT: 8.882 min Scan# 2439  
 Delta R.T. -0.000 min  
 Lab File: VV021445.D  
 Acq: 27 May 2021 16:11



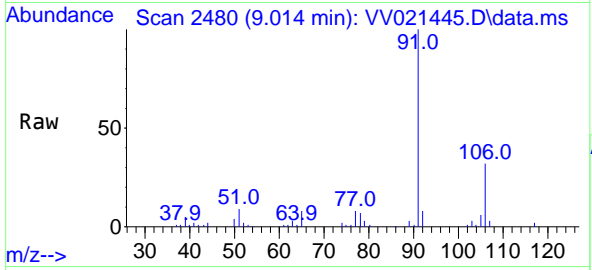
Tgt Ion:112 Resp: 22559  
 Ion Ratio Lower Upper  
 112 100  
 114 30.1 22.5 41.9  
 77 52.6 43.8 65.6





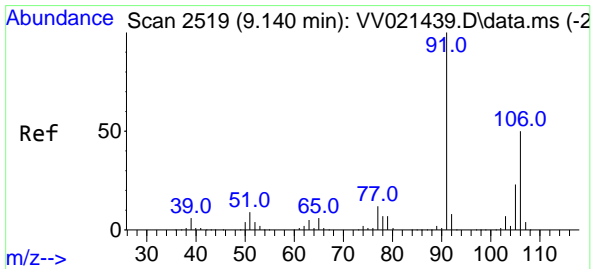
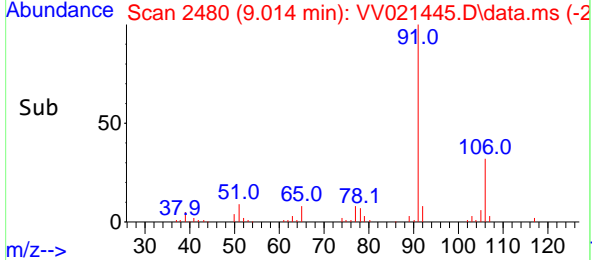
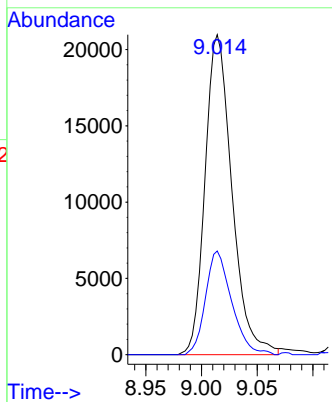
#52  
 Ethylbenzene  
 Concen: 2.19 ug/L  
 RT: 9.014 min Scan# 2480  
 Delta R.T. -0.000 min  
 Lab File: VV021445.D  
 Acq: 27 May 2021 16:11

**Instrument :**  
 MSVOA\_V  
**ClientSampled :**  
 MDL-WATER-QT3-2021-05

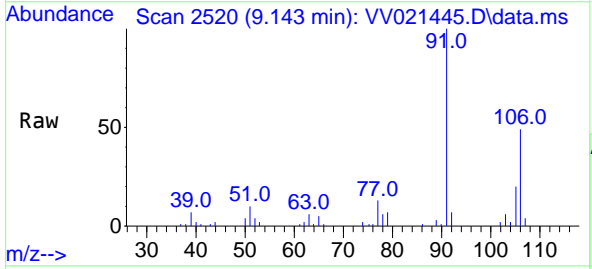


Tgt Ion: 91 Resp: 35299  
 Ion Ratio Lower Upper  
 91 100  
 106 32.4 22.4 41.6

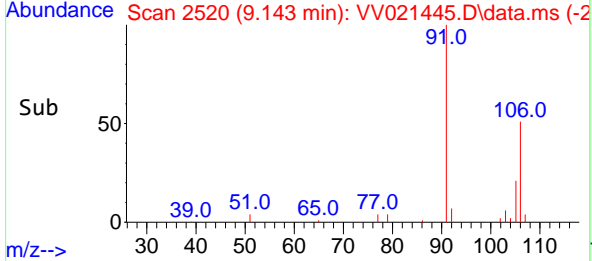
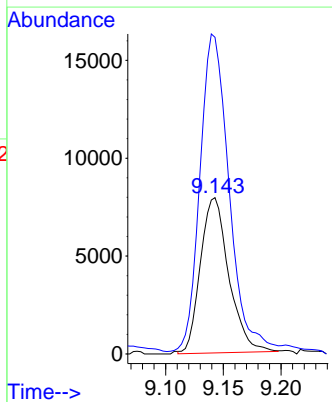
**Manual Integrations**  
**APPROVED**  
 MMDadoda  
 5/28/2021 3:06:28 PM

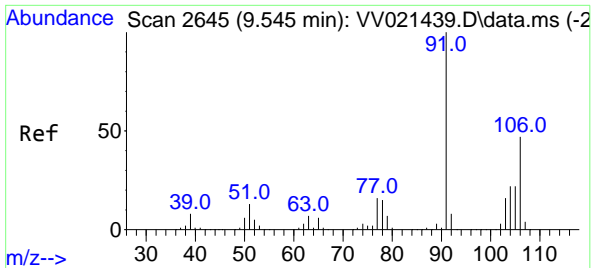


#53  
 m,p-Xylene  
 Concen: 2.20 ug/L  
 RT: 9.143 min Scan# 2520  
 Delta R.T. 0.003 min  
 Lab File: VV021445.D  
 Acq: 27 May 2021 16:11



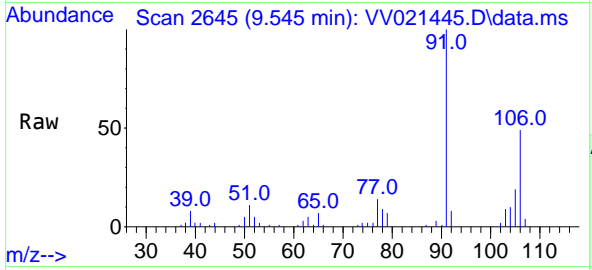
Tgt Ion: 106 Resp: 13605  
 Ion Ratio Lower Upper  
 106 100  
 91 202.7 139.4 258.8





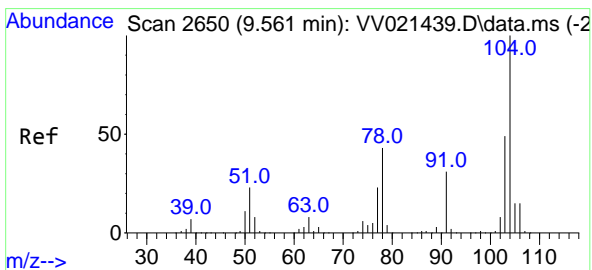
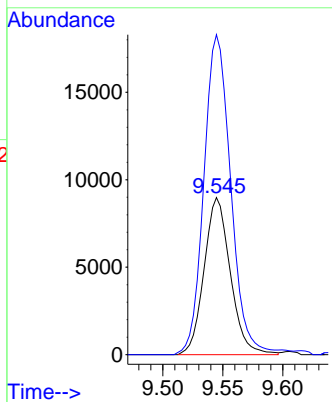
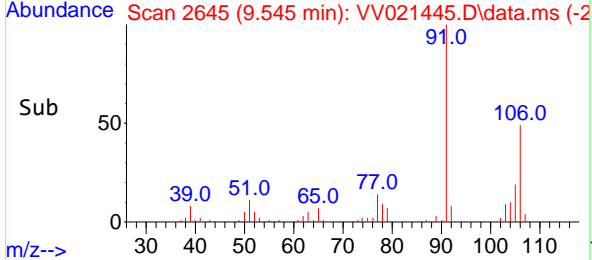
#54  
 o-Xylene  
 Concen: 2.24 ug/L  
 RT: 9.545 min Scan# 2645  
 Delta R.T. -0.000 min  
 Lab File: VV021445.D  
 Acq: 27 May 2021 16:11

**Instrument :**  
 MSVOA\_V  
**ClientSampled :**  
 MDL-WATER-QT3-2021-05

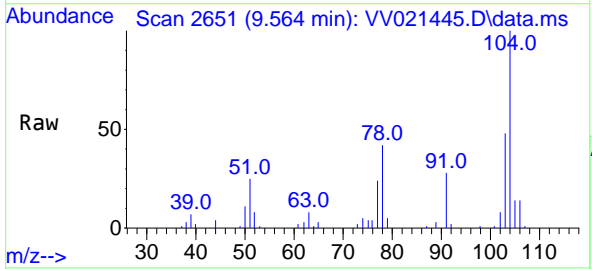


Tgt Ion:106 Resp: 13684  
 Ion Ratio Lower Upper  
 106 100  
 91 203.6 148.5 275.9

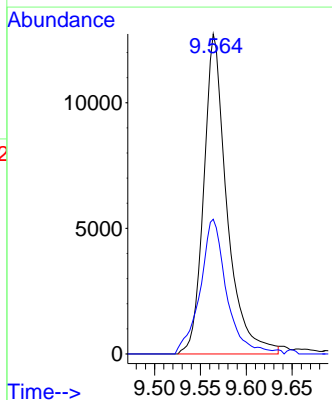
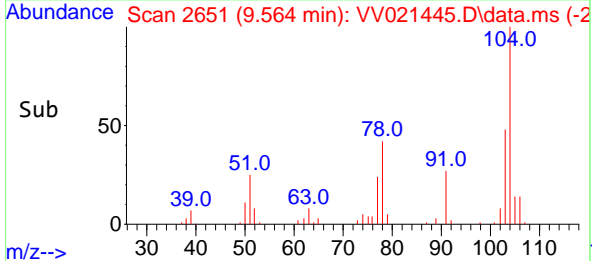
**Manual Integrations**  
**APPROVED**  
 MMDadoda  
 5/28/2021 3:06:28 PM



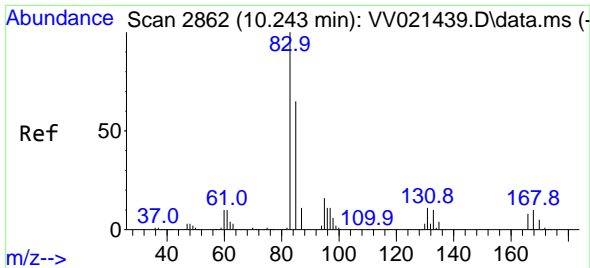
#55  
 Styrene  
 Concen: 2.13 ug/L  
 RT: 9.564 min Scan# 2651  
 Delta R.T. 0.003 min  
 Lab File: VV021445.D  
 Acq: 27 May 2021 16:11



Tgt Ion:104 Resp: 22424  
 Ion Ratio Lower Upper  
 104 100  
 78 42.1 30.3 56.3

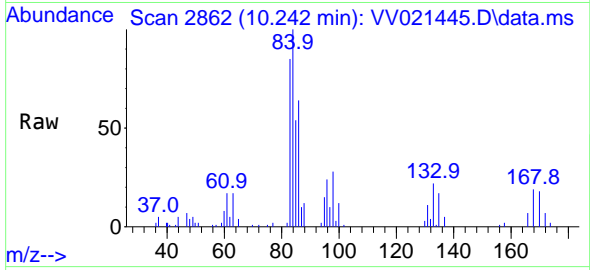






#57  
 1,1,2,2-Tetrachloroethane  
 Concen: 2.38 ug/L  
 RT: 10.242 min Scan# 2862  
 Delta R.T. -0.000 min  
 Lab File: VV021445.D  
 Acq: 27 May 2021 16:11

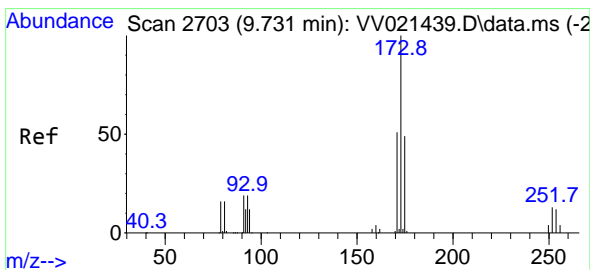
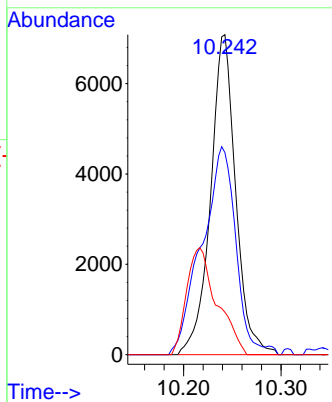
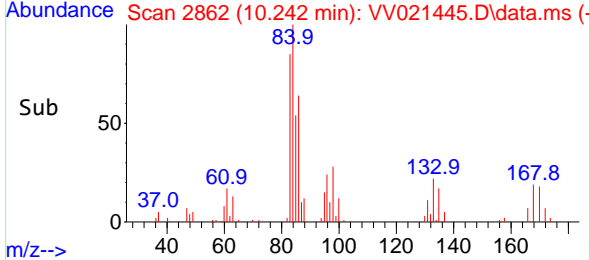
Instrument : MSVOA\_V  
 Client Sampled : MDL-WATER-QT3-2021-05



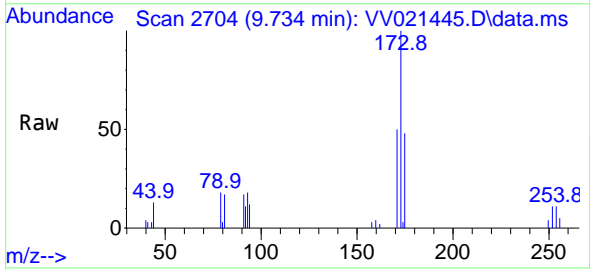
Tgt Ion: 83 Resp: 12712  
 Ion Ratio Lower Upper  
 83 100  
 85 63.1 45.8 85.2  
 131 13.3 8.7 13.1#

Manual Integrations  
 APPROVED

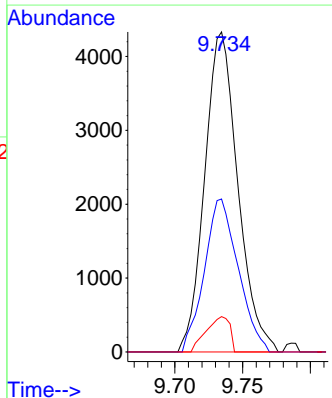
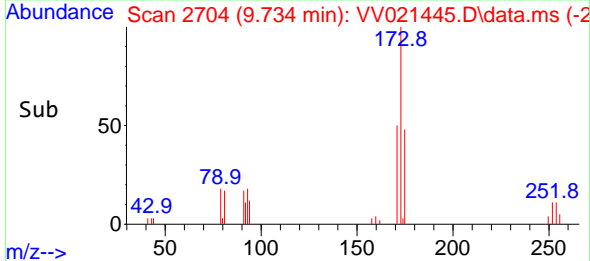
MMDadoda  
 5/28/2021 3:06:28 PM

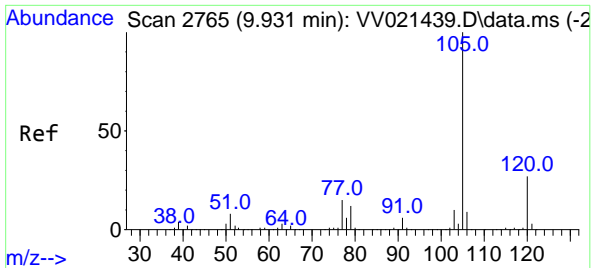


#59  
 Bromoform  
 Concen: 2.09 ug/L  
 RT: 9.734 min Scan# 2704  
 Delta R.T. 0.003 min  
 Lab File: VV021445.D  
 Acq: 27 May 2021 16:11



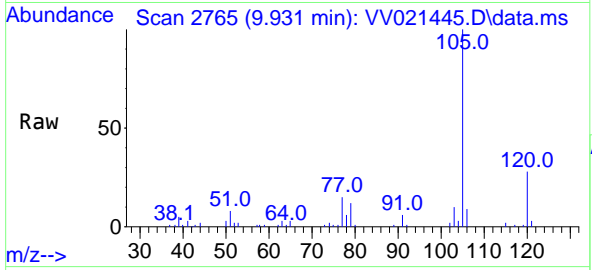
Tgt Ion: 173 Resp: 7364  
 Ion Ratio Lower Upper  
 173 100  
 175 48.8 38.7 58.1  
 254 7.9 9.8 14.8#





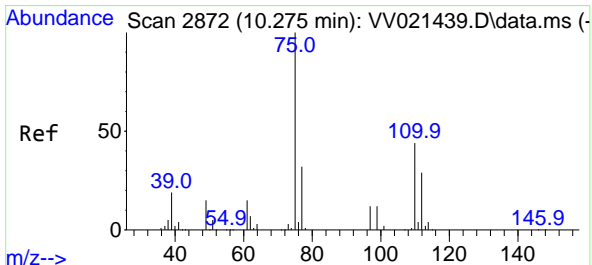
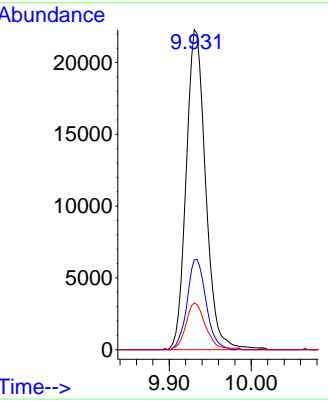
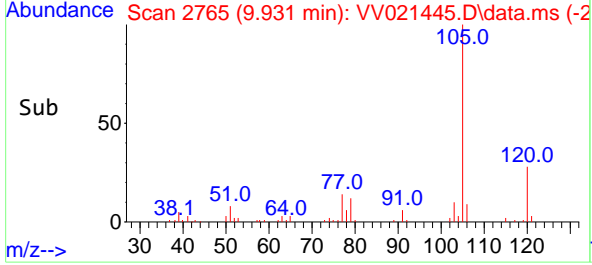
#60  
 Isopropylbenzene  
 Concen: 2.28 ug/L  
 RT: 9.931 min Scan# 2765  
 Delta R.T. -0.000 min  
 Lab File: VV021445.D  
 Acq: 27 May 2021 16:11

**Instrument :**  
 MSVOA\_V  
**Client Sampled :**  
 MDL-WATER-QT3-2021-05

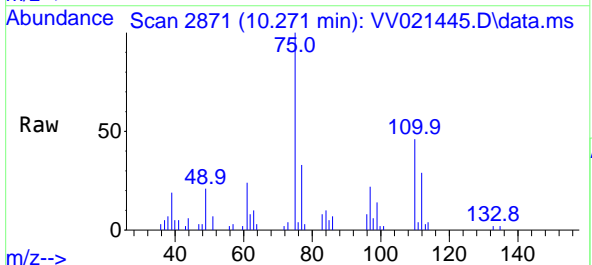


Tgt Ion: 105 Resp: 36762  
 Ion Ratio Lower Upper  
 105 100  
 120 27.5 21.7 32.5  
 77 14.7 11.5 17.3

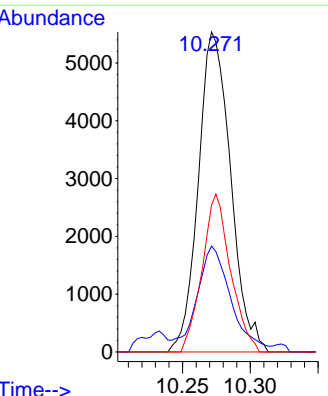
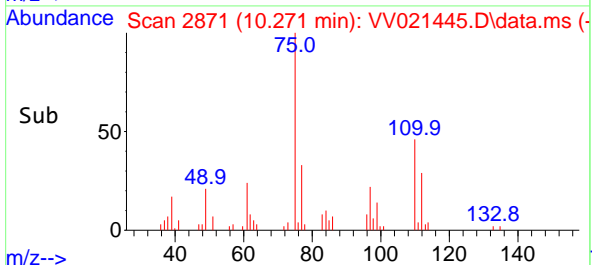
**Manual Integrations**  
**APPROVED**  
 MMDadoda  
 5/28/2021 3:06:28 PM

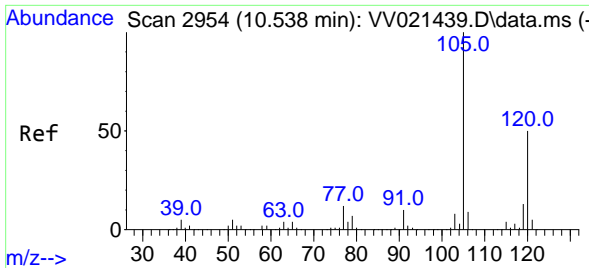


#61  
 1,2,3-Trichloropropane  
 Concen: 2.24 ug/L  
 RT: 10.271 min Scan# 2871  
 Delta R.T. -0.003 min  
 Lab File: VV021445.D  
 Acq: 27 May 2021 16:11

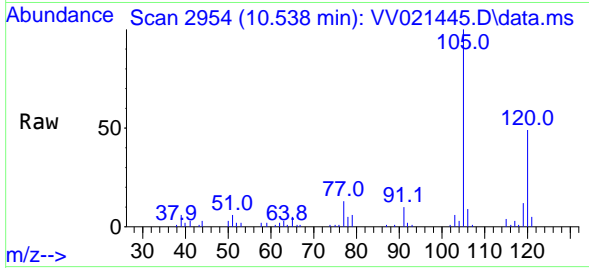


Tgt Ion: 75 Resp: 9161  
 Ion Ratio Lower Upper  
 75 100  
 77 34.7 25.9 38.9  
 110 43.4 34.8 52.2

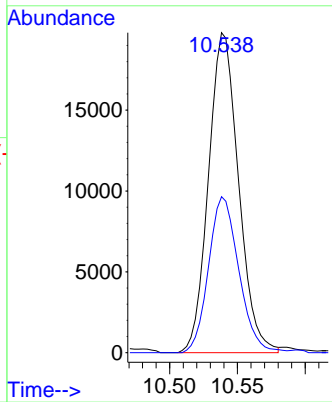
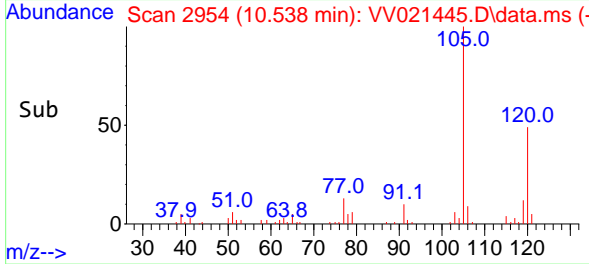




#62  
 1,3,5-Trimethylbenzene  
 Concen: 2.20 ug/L  
 RT: 10.538 min Scan# 2954  
 Delta R.T. -0.000 min  
 Lab File: VV021445.D  
 Acq: 27 May 2021 16:11

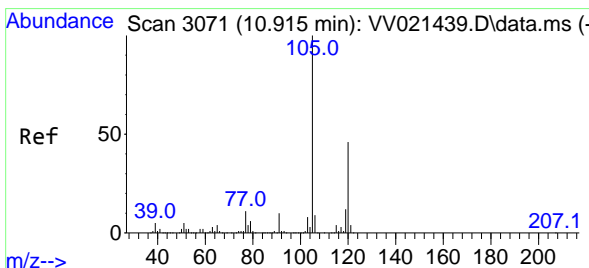


Tgt Ion:105 Resp: 30553  
 Ion Ratio Lower Upper  
 105 100  
 120 49.1 40.1 60.1

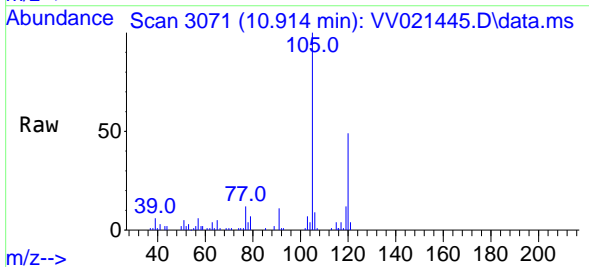


**Instrument :**  
 MSVOA\_V  
**ClientSampled :**  
 MDL-WATER-QT3-2021-05

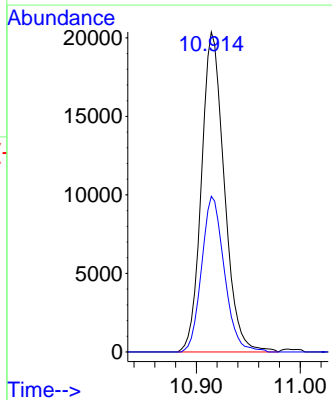
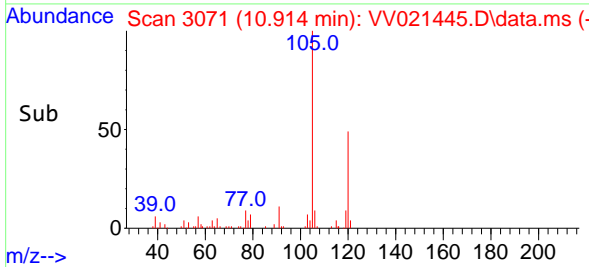
**Manual Integrations**  
**APPROVED**  
 MMDadoda  
 5/28/2021 3:06:28 PM

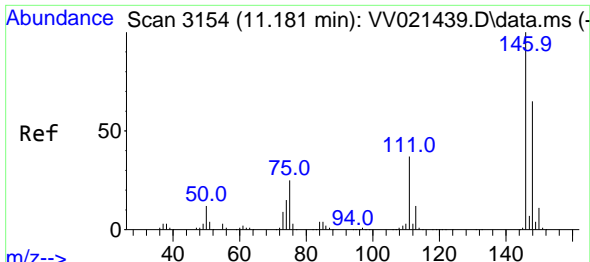


#63  
 1,2,4-Trimethylbenzene  
 Concen: 2.21 ug/L  
 RT: 10.914 min Scan# 3071  
 Delta R.T. -0.000 min  
 Lab File: VV021445.D  
 Acq: 27 May 2021 16:11



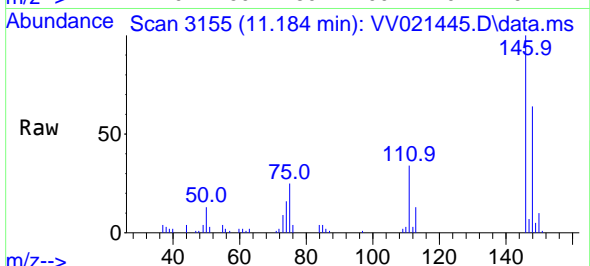
Tgt Ion:105 Resp: 31082  
 Ion Ratio Lower Upper  
 105 100  
 120 48.4 37.0 55.4





#64  
 1,3-Dichlorobenzene  
 Concen: 2.33 ug/L  
 RT: 11.184 min Scan# 3155  
 Delta R.T. 0.003 min  
 Lab File: VV021445.D  
 Acq: 27 May 2021 16:11

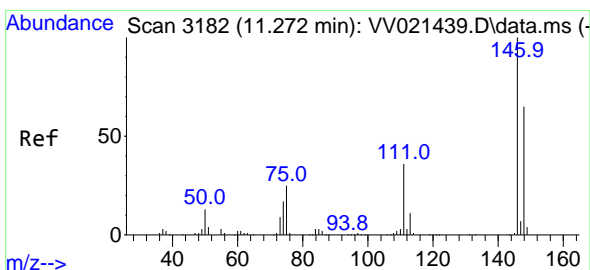
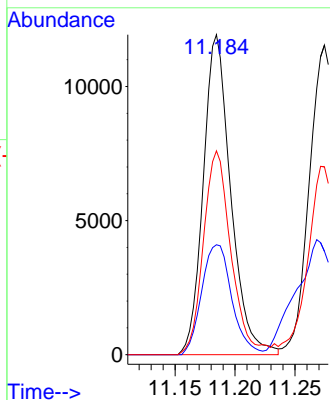
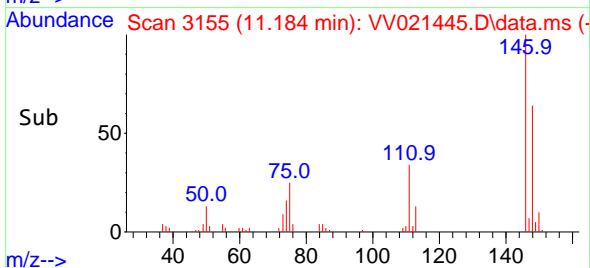
Instrument :  
 MSVOA\_V  
 Client Sampled :  
 MDL-WATER-QT3-2021-05



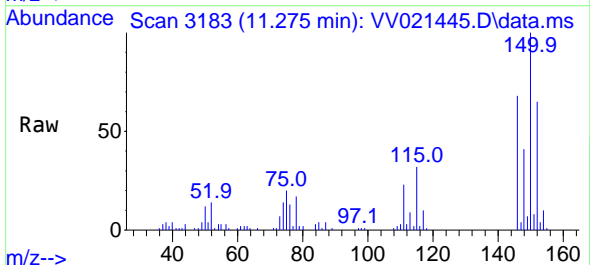
Tgt Ion:146 Resp: 19027  
 Ion Ratio Lower Upper  
 146 100  
 111 34.4 26.0 48.2  
 148 63.7 45.2 84.0

Manual Integrations  
 APPROVED

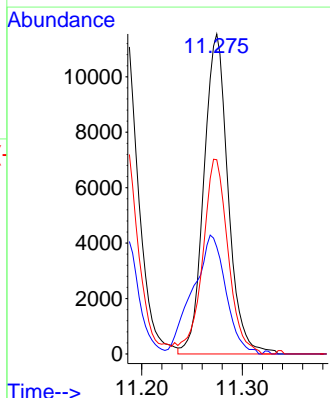
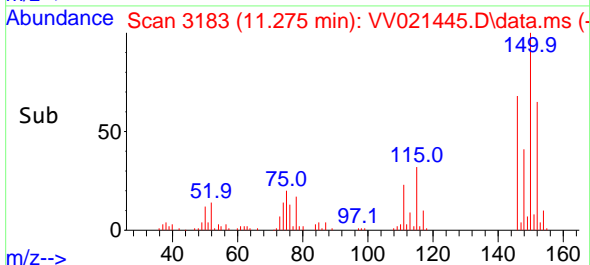
MMDadoda  
 5/28/2021 3:06:28 PM

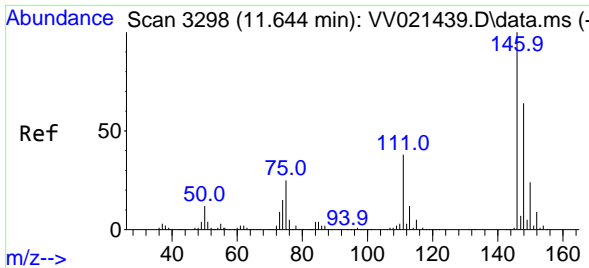


#65  
 1,4-Dichlorobenzene  
 Concen: 2.34 ug/L  
 RT: 11.275 min Scan# 3183  
 Delta R.T. 0.003 min  
 Lab File: VV021445.D  
 Acq: 27 May 2021 16:11

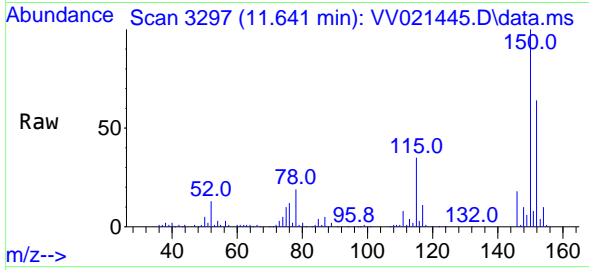


Tgt Ion:146 Resp: 19319  
 Ion Ratio Lower Upper  
 146 100  
 111 33.4 25.4 47.2  
 148 60.7 45.4 84.4

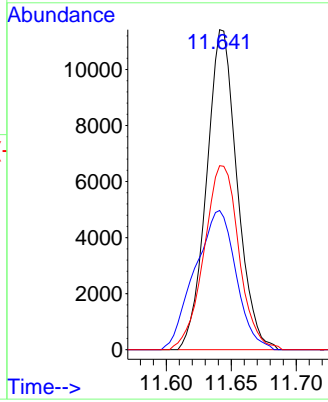
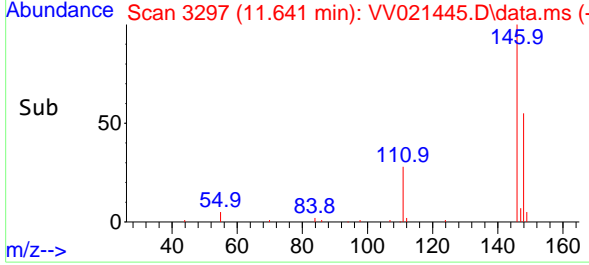




#67  
 1,2-Dichlorobenzene  
 Concen: 2.29 ug/L  
 RT: 11.641 min Scan# 3297  
 Delta R.T. -0.003 min  
 Lab File: VV021445.D  
 Acq: 27 May 2021 16:11

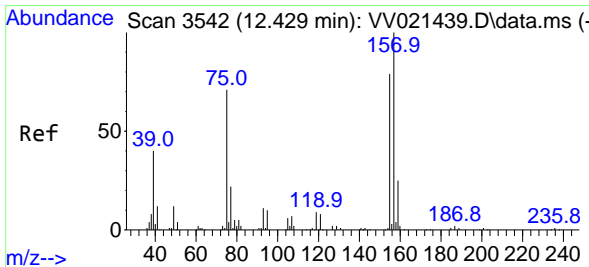


Tgt Ion: 146 Resp: 18675  
 Ion Ratio Lower Upper  
 146 100  
 111 43.5 30.8 46.2  
 148 57.5 51.0 76.4

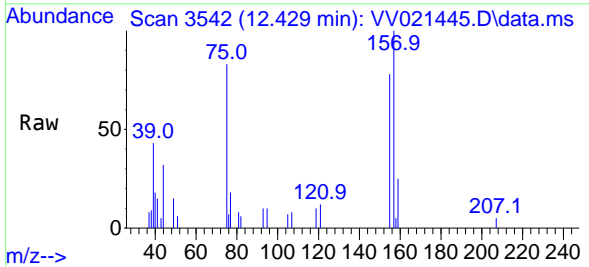


**Instrument :**  
 MSVOA\_V  
**Client Sampled :**  
 MDL-WATER-QT3-2021-05

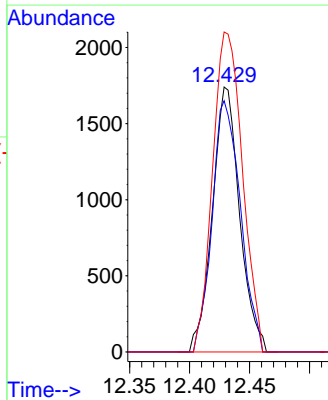
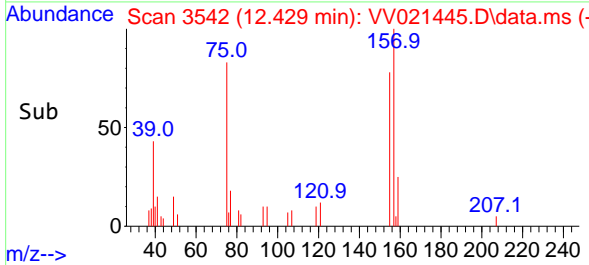
**Manual Integrations**  
**APPROVED**  
 MMDadoda  
 5/28/2021 3:06:28 PM

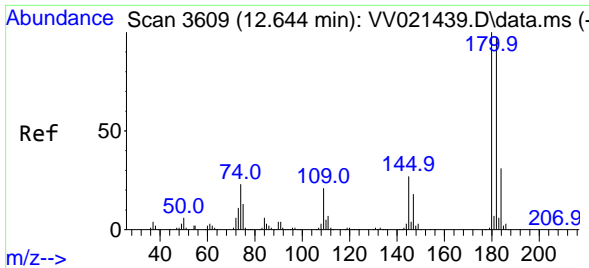


#68  
 1,2-Dibromo-3-chloropropane  
 Concen: 2.15 ug/L  
 RT: 12.429 min Scan# 3542  
 Delta R.T. -0.000 min  
 Lab File: VV021445.D  
 Acq: 27 May 2021 16:11



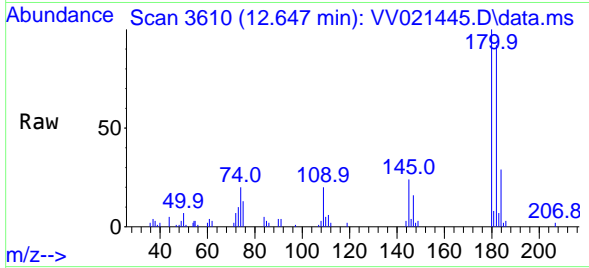
Tgt Ion: 75 Resp: 2745  
 Ion Ratio Lower Upper  
 75 100  
 155 94.8 89.7 134.5  
 157 120.8 113.2 169.8





#69  
 1,3,5-Trichlorobenzene  
 Concen: 2.10 ug/L  
 RT: 12.647 min Scan# 3610  
 Delta R.T. 0.003 min  
 Lab File: VV021445.D  
 Acq: 27 May 2021 16:11

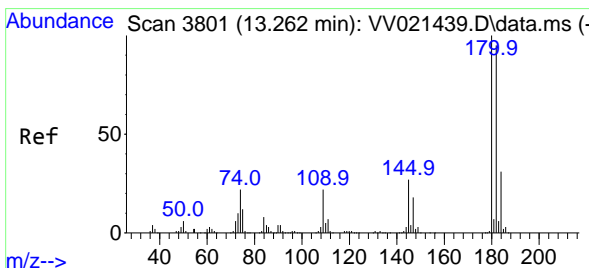
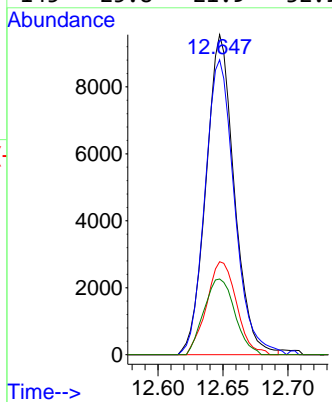
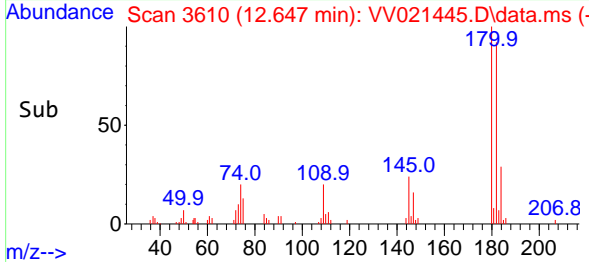
Instrument :  
 MSVOA\_V  
 Client Sampled :  
 MDL-WATER-QT3-2021-05



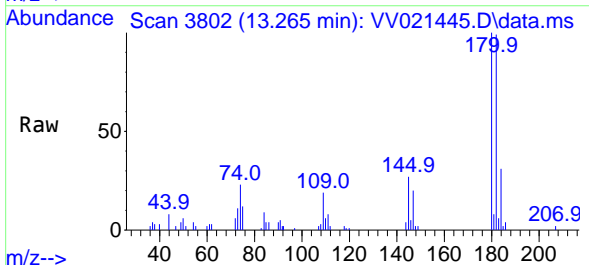
Tgt Ion:180 Resp: 14474  
 Ion Ratio Lower Upper  
 180 100  
 182 96.2 76.8 115.2  
 184 30.6 24.3 36.5  
 145 25.8 21.9 32.9

Manual Integrations  
 APPROVED

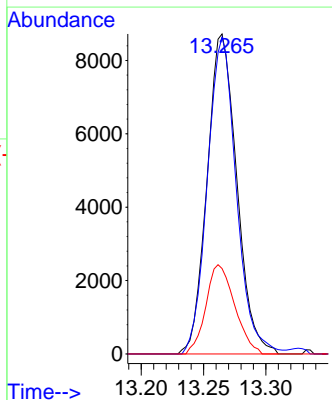
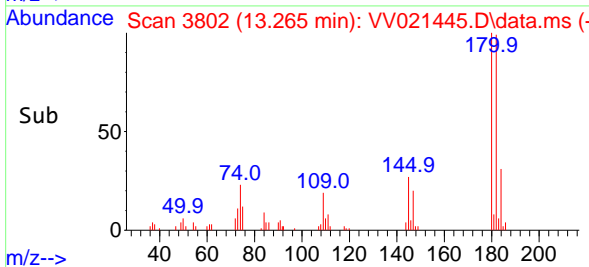
MMDadoda  
 5/28/2021 3:06:28 PM

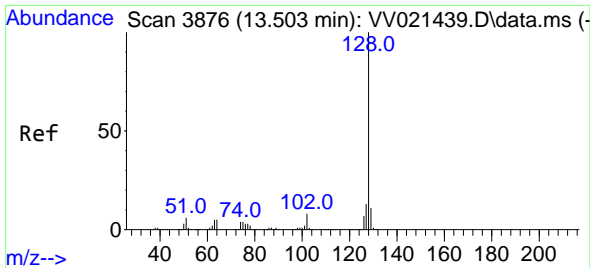


#70  
 1,2,4-trichlorobenzene  
 Concen: 2.35 ug/L  
 RT: 13.265 min Scan# 3802  
 Delta R.T. 0.003 min  
 Lab File: VV021445.D  
 Acq: 27 May 2021 16:11



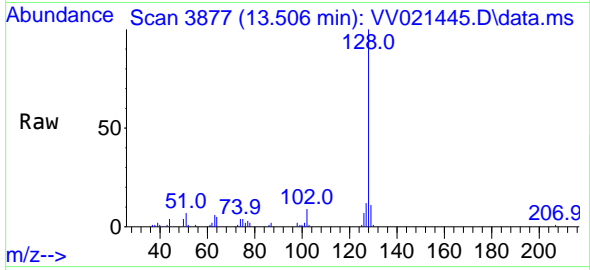
Tgt Ion:180 Resp: 14464  
 Ion Ratio Lower Upper  
 180 100  
 182 96.3 76.2 114.4  
 145 27.0 21.8 32.8





#71  
 Naphthalene  
 Concen: 1.65 ug/L  
 RT: 13.506 min Scan# 3877  
 Delta R.T. 0.003 min  
 Lab File: VV021445.D  
 Acq: 27 May 2021 16:11

Instrument :  
 MSVOA\_V  
 ClientSampled :  
 MDL-WATER-QT3-2021-05

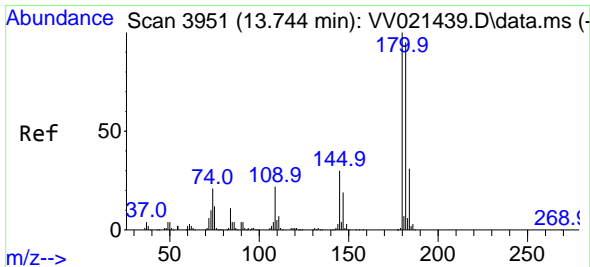
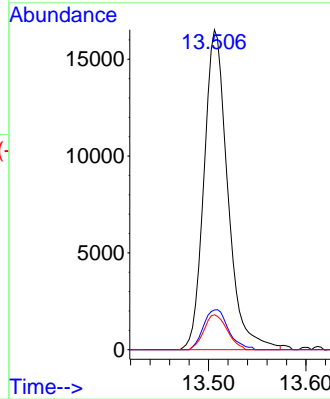
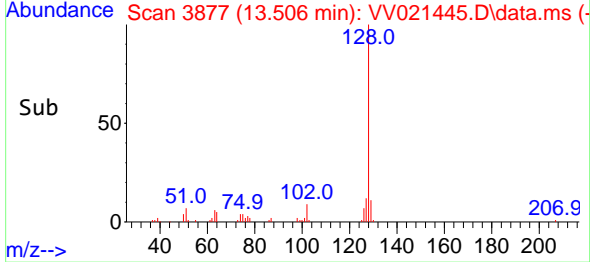


Tgt Ion:128 Resp: 27991

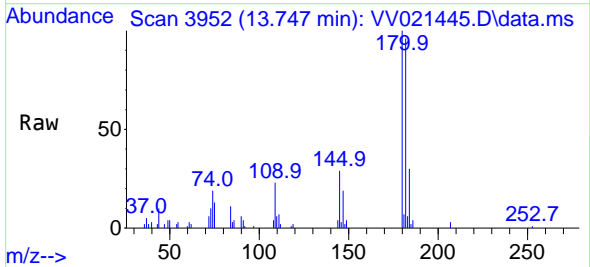
Ion	Ratio	Lower	Upper
128	100		
127	13.0	10.2	15.4
129	10.6	8.6	12.8

Manual Integrations  
 APPROVED

MMDadoda  
 5/28/2021 3:06:28 PM



#72  
 1,2,3-Trichlorobenzene  
 Concen: 2.05 ug/L  
 RT: 13.747 min Scan# 3952  
 Delta R.T. 0.003 min  
 Lab File: VV021445.D  
 Acq: 27 May 2021 16:11



Tgt Ion:180 Resp: 12256

Ion	Ratio	Lower	Upper
180	100		
182	95.3	76.3	114.5
145	28.6	24.0	36.0

