

Data Path : Z:\VOASRV\HPCHEM1\MSVOA V\DATA\VV052819\
 Data File : VV011086.D
 Acq On : 29 May 2019 03:35
 Operator : SY/MD
 Sample : K3016-15
 Misc : 5.46G/10ML/MSVOA V/SOIL
 ALS Vial : 1 Sample Multiplier: 1

Instrument :
 MSVOA_V
 ClientSampleId :
 A51D2

Integration Parameters: LSCINT.P

Integrator: RTE
 Smoothing : OFF Filtering: 5
 Sampling : 1 Min Area: 0 % of largest Peak
 Start Thrs: 0.2 Max Peaks: 100
 Stop Thrs : 0 Peak Location: TOP

If leading or trailing edge < 100 prefer < Baseline drop else tangent >
 Peak separation: 5

Method : Z:\VOASRV\HPCHEM1\MSVOA_V\METHOD\SOM2VLM052819S.M
 Title : VOC Analysis

Signal : TIC

peak #	R.T. min	first scan	max scan	last scan	PK TY	peak height	corr. area	corr. % max.	% of total
1	1.312	63	69	77	rVB	205677	189219	11.57%	1.456%
2	1.386	86	92	99	rBV	83977	84156	5.15%	0.648%
3	1.563	141	147	155	rVB	137501	160008	9.78%	1.231%
4	2.119	311	320	331	rVV2	329618	474189	28.99%	3.649%
5	2.187	334	341	358	rVB	103167	153538	9.39%	1.181%
6	2.457	419	425	439	rVB	58048	92707	5.67%	0.713%
7	2.724	505	508	511	rVB4	1774	1211	0.07%	0.009%
8	2.994	581	592	601	rBV4	6328	13613	0.83%	0.105%
9	3.065	608	614	615	rBV4	5690	5571	0.34%	0.043%
10	3.203	652	657	672	rVB7	4225	8531	0.52%	0.066%
11	3.496	741	748	750	rBV8	1150	1277	0.08%	0.010%
12	3.541	755	762	764	rBV7	1637	1973	0.12%	0.015%
13	3.746	814	826	845	rBV3	38990	96666	5.91%	0.744%
14	3.936	873	885	906	rBV	72209	182056	11.13%	1.401%
15	4.180	956	961	965	rVV6	1416	1449	0.09%	0.011%
16	4.396	1008	1028	1052	rBV	233400	569462	34.82%	4.382%
17	4.614	1092	1096	1100	rBV6	1364	1336	0.08%	0.010%
18	4.698	1119	1122	1126	rBV4	2046	1954	0.12%	0.015%
19	4.769	1141	1144	1148	rBV5	1183	1033	0.06%	0.008%
20	4.798	1151	1153	1156	rBV4	1175	1012	0.06%	0.008%
21	5.090	1226	1244	1264	rBV2	585871	1432150	87.56%	11.020%
22	5.370	1319	1331	1351	rVV3	22254	53172	3.25%	0.409%
23	5.534	1374	1382	1384	rBV8	4450	5520	0.34%	0.042%
24	5.659	1408	1421	1449	rBV	416637	838325	51.25%	6.451%
25	5.930	1500	1505	1506	rBV5	1744	1201	0.07%	0.009%
26	5.939	1506	1508	1511	rBV3	1442	1302	0.08%	0.010%
27	6.116	1547	1563	1586	rVV	334606	693664	42.41%	5.337%
28	6.328	1617	1629	1650	rBV	157259	308003	18.83%	2.370%
29	6.450	1665	1667	1671	rVB4	1760	1003	0.06%	0.008%
30	6.611	1712	1717	1719	rBV5	1103	996	0.06%	0.008%
31	6.647	1725	1728	1731	rBV4	1591	1266	0.08%	0.010%
32	6.765	1761	1765	1768	rVB4	1304	1058	0.06%	0.008%
33	6.913	1808	1811	1815	rBV6	1268	1041	0.06%	0.008%
34	7.026	1834	1846	1866	rVB	195538	344724	21.08%	2.652%

Data Path : Z:\VOASRV\HPCHEM1\MSVOA V\DATA\VV052819\
 Data File : VV011086.D
 Acq On : 29 May 2019 03:35
 Operator : SY/MD
 Sample : K3016-15
 Misc : 5.46G/10ML/MSVOA V/SOIL
 ALS Vial : 1 Sample Multiplier: 1

Instrument :
 MSVOA_V
 ClientSampleId :
 A51D2

Integration Parameters: LSCINT.P

Integrator: RTE
 Smoothing : OFF
 Sampling : 1
 Start Thrs: 0.2
 Stop Thrs : 0

Filtering: 5
 Min Area: 0 % of largest Peak
 Max Peaks: 100
 Peak Location: TOP

If leading or trailing edge < 100 prefer < Baseline drop else tangent >
 Peak separation: 5

Method : Z:\VOASRV\HPCHEM1\MSVOA_V\METHOD\SOM2VLM052819S.M
 Title : VOC Analysis

35	7.183	1888	1895	1906	rVB	4609	10429	0.64%	0.080%
36	7.357	1932	1949	1966	rBV	638688	1139560	69.67%	8.768%
37	7.605	2021	2026	2028	rBV5	2438	2183	0.13%	0.017%
38	7.663	2033	2044	2061	rBV	126779	216646	13.25%	1.667%
39	7.746	2061	2070	2082	rVB4	12711	22804	1.39%	0.175%
40	7.904	2117	2119	2124	rVB5	1718	1208	0.07%	0.009%
41	7.929	2124	2127	2131	rBV7	1501	1271	0.08%	0.010%
42	7.981	2131	2143	2151	rBV3	12188	25442	1.56%	0.196%
43	8.132	2179	2190	2211	rBV	276464	493123	30.15%	3.794%
44	8.280	2225	2236	2263	rBV	1001039	1635674	100.00%	12.586%
45	8.743	2377	2380	2383	rBV4	2132	1188	0.07%	0.009%
46	8.894	2413	2427	2448	rVV	603808	1000186	61.15%	7.696%
47	9.180	2508	2516	2520	rBV8	4415	6370	0.39%	0.049%
48	9.257	2532	2540	2559	rVV3	10775	30060	1.84%	0.231%
49	9.354	2563	2570	2584	rVB3	22803	35598	2.18%	0.274%
50	9.534	2619	2626	2637	rBV9	6231	13344	0.82%	0.103%
51	9.752	2687	2694	2699	rBV6	3887	5290	0.32%	0.041%
52	9.849	2712	2724	2744	rBV	110278	187655	11.47%	1.444%
53	9.987	2762	2767	2770	rVV8	2003	2356	0.14%	0.018%
54	10.161	2818	2821	2824	rBV4	1348	1152	0.07%	0.009%
55	10.261	2839	2852	2869	rBV	311908	495083	30.27%	3.809%
56	10.425	2887	2903	2913	rBV3	20077	38863	2.38%	0.299%
57	10.515	2925	2931	2932	rBV5	1366	1138	0.07%	0.009%
58	10.560	2936	2945	2947	rBV8	8956	11797	0.72%	0.091%
59	10.627	2958	2966	2976	rBV2	12265	20524	1.25%	0.158%
60	10.756	2997	3006	3014	rVV5	14611	25300	1.55%	0.195%
61	10.807	3015	3022	3033	rVB7	10733	21170	1.29%	0.163%
62	11.048	3094	3097	3103	rBV7	1023	1097	0.07%	0.008%
63	11.080	3103	3107	3112	rBV6	2827	3436	0.21%	0.026%
64	11.196	3130	3143	3160	rBV2	73539	127096	7.77%	0.978%
65	11.293	3162	3173	3192	rVB	436377	707402	43.25%	5.443%
66	11.441	3215	3219	3224	rBV6	974	1145	0.07%	0.009%
67	11.579	3252	3262	3274	rBV4	11084	19860	1.21%	0.153%
68	11.672	3280	3291	3304	rBV	424490	678260	41.47%	5.219%
69	11.865	3348	3351	3355	rBV4	1856	1618	0.10%	0.012%
70	12.000	3383	3393	3397	rBV4	4555	7424	0.45%	0.057%
71	12.055	3400	3410	3424	rBV5	22725	42716	2.61%	0.329%

Data Path : Z:\VOASRV\HPCHEM1\MSVOA V\DATA\VV052819\
 Data File : VV011086.D
 Acq On : 29 May 2019 03:35
 Operator : SY/MD
 Sample : K3016-15
 Misc : 5.46G/10ML/MSVOA V/SOIL
 ALS Vial : 1 Sample Multiplier: 1

Instrument :
 MSVOA_V
 ClientSampleId :
 A51D2

Integration Parameters: LSCINT.P

Integrator: RTE
 Smoothing : OFF
 Sampling : 1
 Start Thrs: 0.2
 Stop Thrs : 0

Filtering: 5
 Min Area: 0 % of largest Peak
 Max Peaks: 100
 Peak Location: TOP

If leading or trailing edge < 100 prefer < Baseline drop else tangent >
 Peak separation: 5

Method : Z:\VOASRV\HPCHEM1\MSVOA_V\METHOD\SOM2VLM052819S.M
 Title : VOC Analysis

72	12.296	3474	3485	3496	rVV	11999	22661	1.39%	0.174%
73	12.392	3506	3515	3528	rBV2	45299	69585	4.25%	0.535%
74	12.508	3548	3551	3555	rBV4	1667	1493	0.09%	0.011%
75	12.534	3557	3559	3565	rVB7	1887	1345	0.08%	0.010%
76	12.624	3585	3587	3591	rBV5	1703	1217	0.07%	0.009%
77	12.685	3602	3606	3608	rBV5	1697	1193	0.07%	0.009%
78	12.717	3609	3616	3624	rVB5	7507	11020	0.67%	0.085%
79	12.785	3629	3637	3643	rBV8	5492	10415	0.64%	0.080%
80	12.932	3675	3683	3691	rBV8	5165	8466	0.52%	0.065%
81	12.997	3695	3703	3704	rBV8	2963	2493	0.15%	0.019%
82	13.087	3727	3731	3733	rBV4	1702	1338	0.08%	0.010%
83	13.103	3733	3736	3738	rBV3	1826	1456	0.09%	0.011%
84	13.183	3754	3761	3775	rVB9	12726	21418	1.31%	0.165%
85	13.482	3846	3854	3862	rBV9	9694	16253	0.99%	0.125%
86	13.633	3893	3901	3910	rVV5	6069	9774	0.60%	0.075%
87	13.733	3929	3932	3939	rVB7	1693	1826	0.11%	0.014%
88	13.878	3965	3977	3980	rBV7	2815	5092	0.31%	0.039%
89	14.035	4023	4026	4030	rVB5	1284	976	0.06%	0.008%
90	14.087	4031	4042	4055	rVV2	6458	14457	0.88%	0.111%
91	14.148	4058	4061	4067	rVB7	2366	2066	0.13%	0.016%
92	14.228	4081	4086	4098	rVB10	8372	11999	0.73%	0.092%
93	14.379	4126	4133	4144	rBV10	3945	6325	0.39%	0.049%
94	14.453	4152	4156	4160	rBV7	1566	1514	0.09%	0.012%
95	14.678	4217	4226	4227	rBV8	2726	3259	0.20%	0.025%
96	14.743	4242	4246	4251	rBV7	2708	2825	0.17%	0.022%
97	14.807	4261	4266	4268	rBV5	1863	1954	0.12%	0.015%
98	14.852	4278	4280	4284	rBV4	1410	1197	0.07%	0.009%
99	15.813	4574	4579	4581	rBV6	1542	1373	0.08%	0.011%
100	15.894	4602	4604	4609	rBV4	1674	1359	0.08%	0.010%

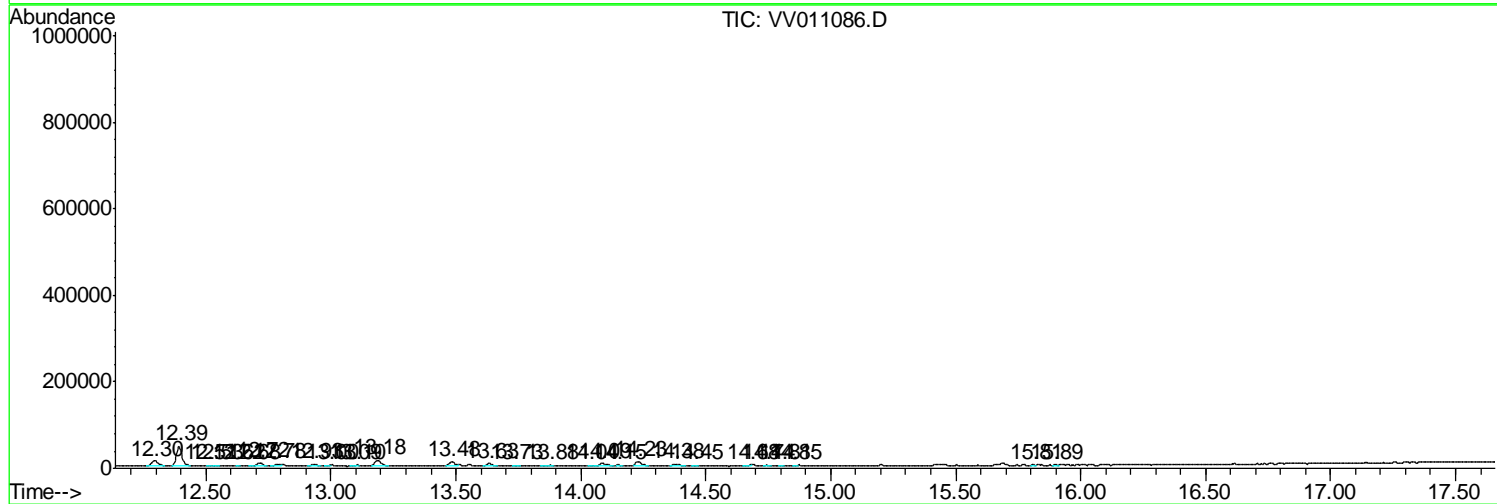
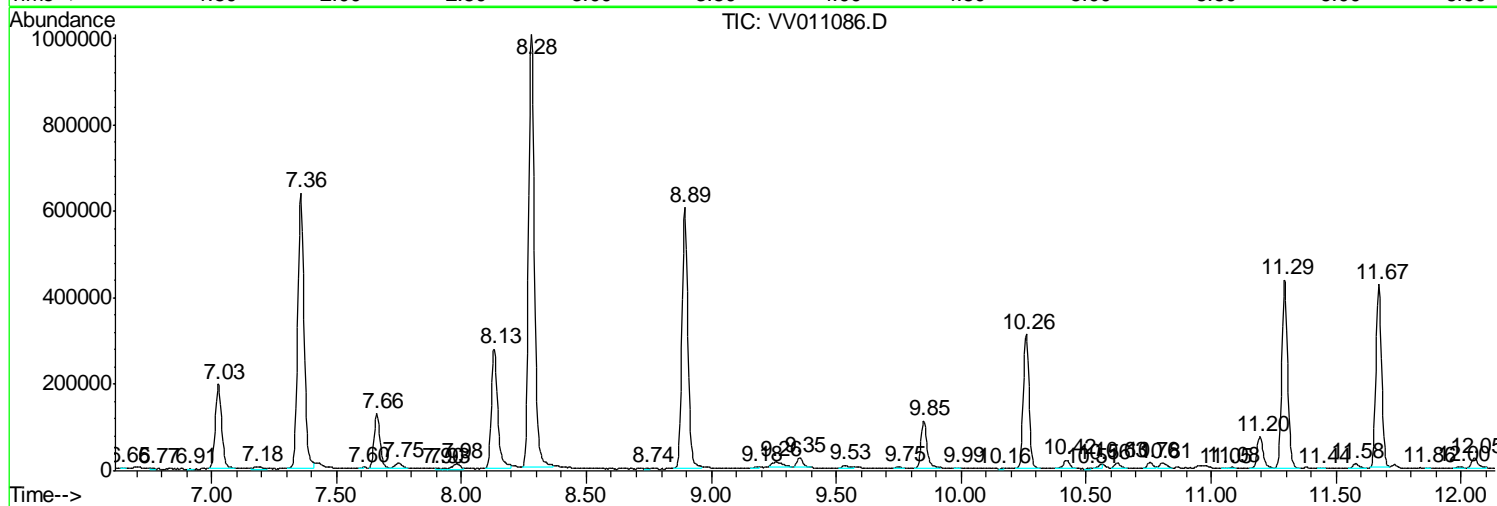
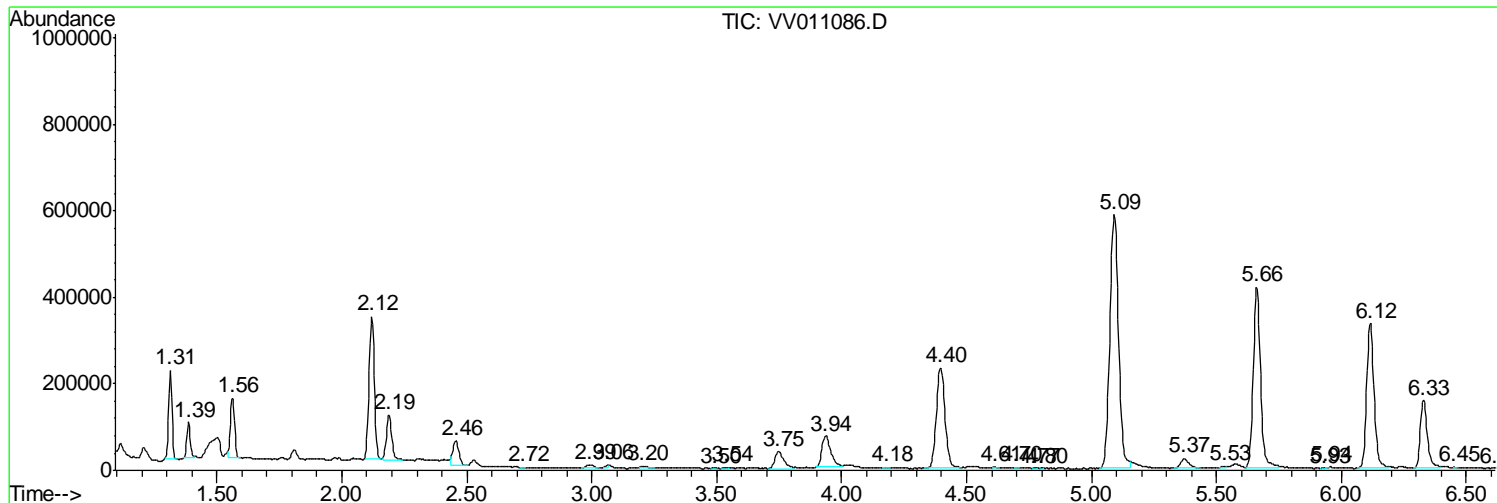
Sum of corrected areas: 12996203

Data Path : Z:\VOASRV\HPCHEM1\MSVOA V\DATA\VV052819\
 Data File : VV011086.D
 Acq On : 29 May 2019 03:35
 Operator : SY/MD
 Sample : K3016-15
 Misc : 5.46G/10ML/MSVOA V/SOIL
 ALS Vial : 1 Sample Multiplier: 1

Instrument :
 MSVOA_V
 Client Sampled :
 A51D2

Quant Method : Z:\VOASRV\HPCHEM1\MSVOA_V\METHOD\SOM2VLM052819S.M
 Quant Title : VOC Analysis

TIC Library : C:\DATABASE\NIST11.L
 TIC Integration Parameters: LSCINT.P



Data Path : Z:\VOASRV\HPCHEM1\MSVOA V\DATA\VV052819\
 Data File : VV011086.D
 Acq On : 29 May 2019 03:35
 Operator : SY/MD
 Sample : K3016-15
 Misc : 5.46G/10ML/MSVOA V/SOIL
 ALS Vial : 1 Sample Multiplier: 1

Instrument :
 MSVOA_V
 ClientSampled :
 A51D2

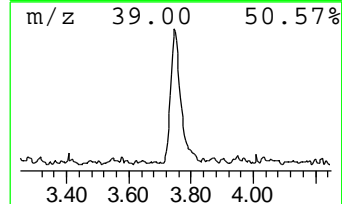
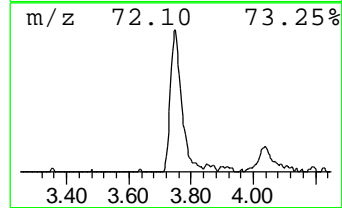
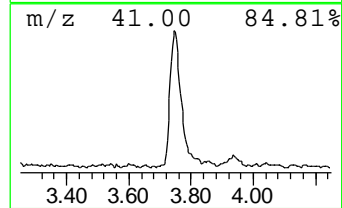
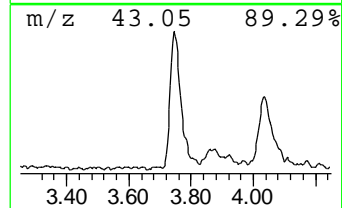
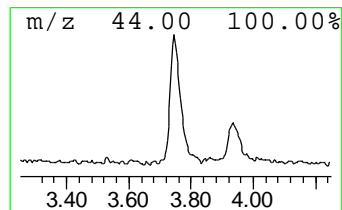
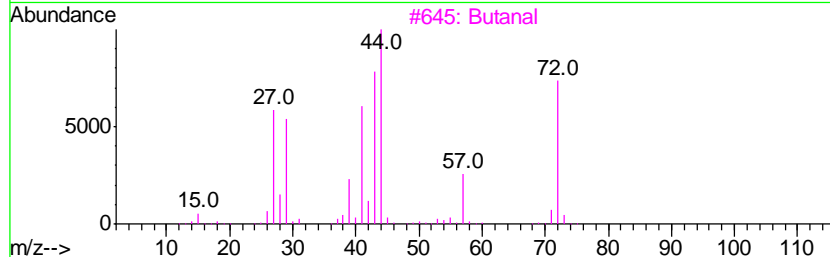
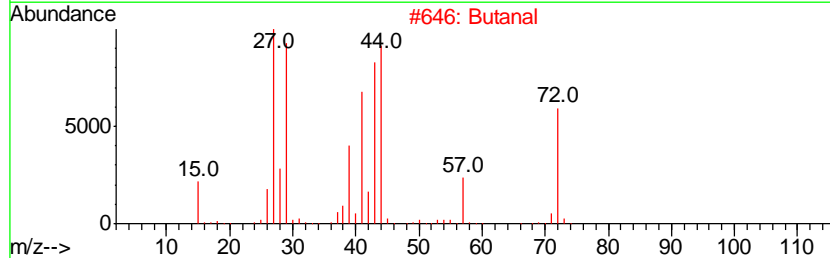
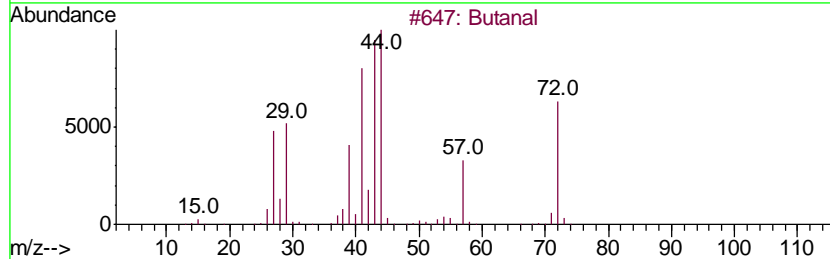
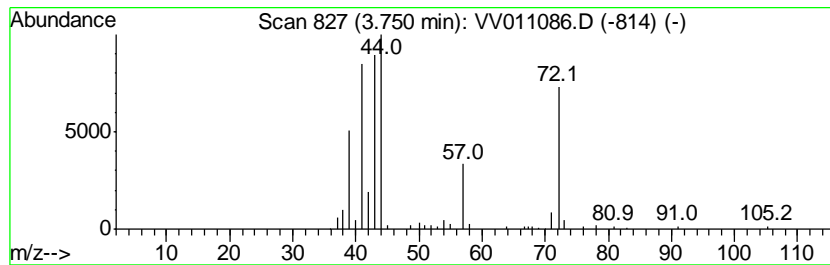
Quant Method : Z:\VOASRV\HPCHEM1\MSVOA_V\METHOD\SOM2VLM052819S.M
 Quant Title : VOC Analysis

TIC Library : C:\DATABASE\NIST11.L
 TIC Integration Parameters: LSCINT.P

 Peak Number 2 Butanal Concentration Rank 6

R.T.	EstConc	Area	Relative to ISTD	R.T.
3.75	2.88 ug/L	96666	1,4-Difluorobenzene	5.66

Hit#	of	Tentative ID	MW	MolForm	CAS#	Qual
1	5	Butanal	72	C4H8O	000123-72-8	94
2		Butanal	72	C4H8O	000123-72-8	91
3		Butanal	72	C4H8O	000123-72-8	53
4		Ethene, ethoxy-	72	C4H8O	000109-92-2	50
5		Butanal	72	C4H8O	000123-72-8	38



Data Path : Z:\VOASRV\HPCHEM1\MSVOA V\DATA\VV052819\
 Data File : VV011086.D
 Acq On : 29 May 2019 03:35
 Operator : SY/MD
 Sample : K3016-15
 Misc : 5.46G/10ML/MSVOA V/SOIL
 ALS Vial : 1 Sample Multiplier: 1

Instrument :
 MSVOA_V
 ClientSampleID :
 A51D2

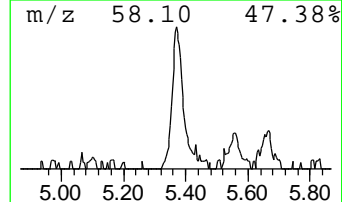
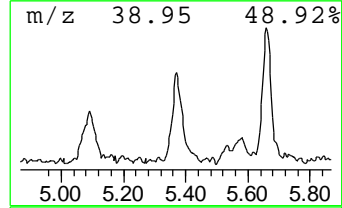
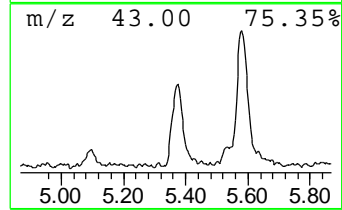
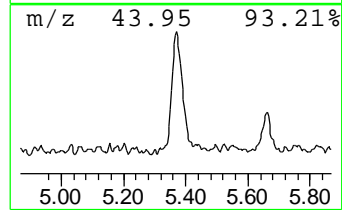
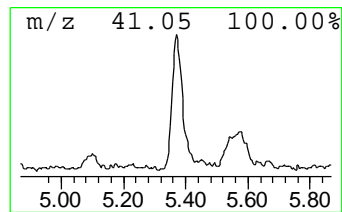
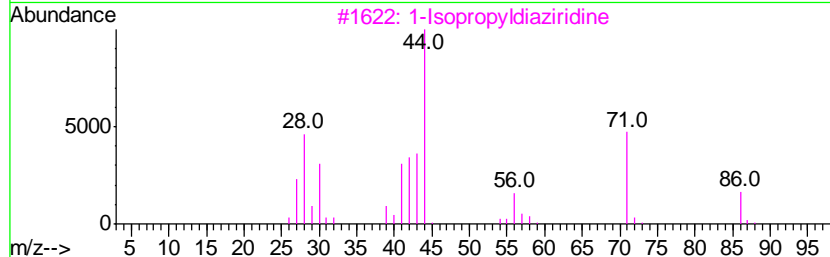
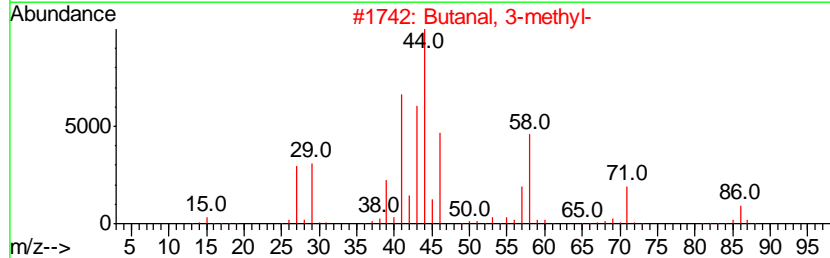
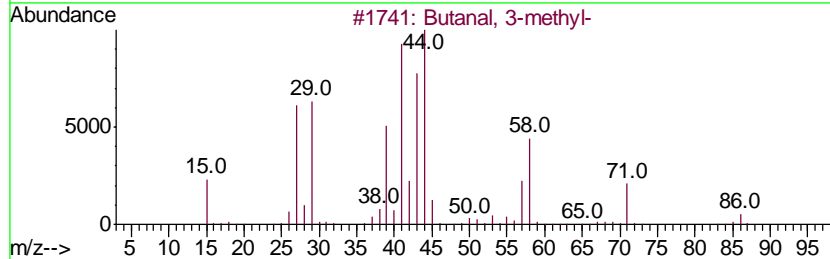
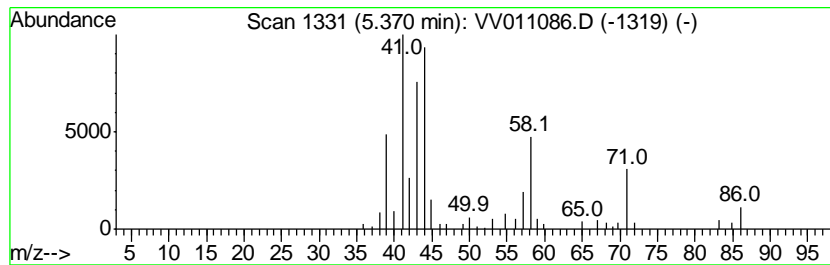
Quant Method : Z:\VOASRV\HPCHEM1\MSVOA_V\METHOD\SOM2VLM052819S.M
 Quant Title : VOC Analysis

TIC Library : C:\DATABASE\NIST11.L
 TIC Integration Parameters: LSCINT.P

 Peak Number 3 Butanal, 3-methyl- Concentration Rank 9

R.T.	EstConc	Area	Relative to ISTD	R.T.
5.37	1.59 ug/L	53172	1,4-Difluorobenzene	5.66

Hit#	of	Tentative ID	MW	MolForm	CAS#	Qual
1	5	Butanal, 3-methyl-	86	C5H10O	000590-86-3	72
2		Butanal, 3-methyl-	86	C5H10O	000590-86-3	52
3		1-Isopropylidiaziridine	86	C4H10N2	033657-26-0	47
4		Butanal, 3-methyl-	86	C5H10O	000590-86-3	46
5		Butanal, 3-methyl-	86	C5H10O	000590-86-3	46



Data Path : Z:\VOASRV\HPCHEM1\MSVOA V\DATA\VV052819\
 Data File : VV011086.D
 Acq On : 29 May 2019 03:35
 Operator : SY/MD
 Sample : K3016-15
 Misc : 5.46G/10ML/MSVOA V/SOIL
 ALS Vial : 1 Sample Multiplier: 1

Instrument :
 MSVOA_V
 ClientSampleID :
 A51D2

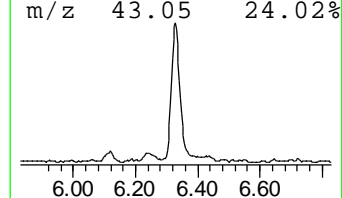
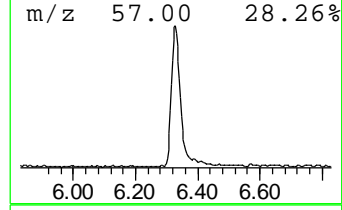
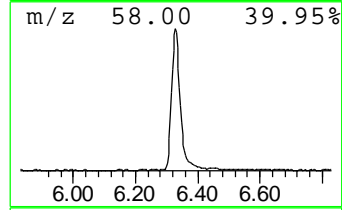
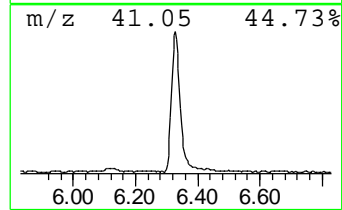
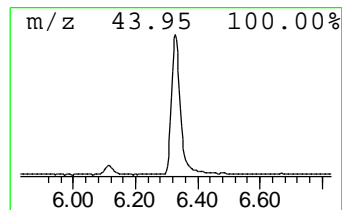
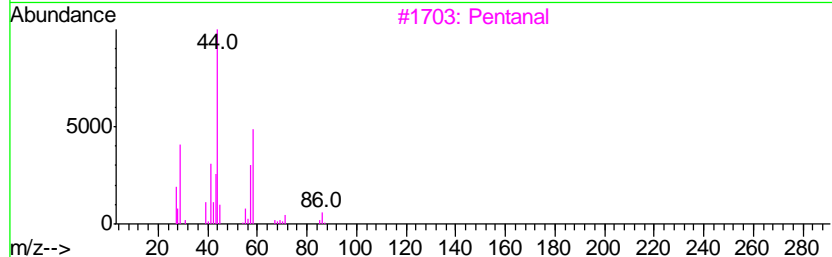
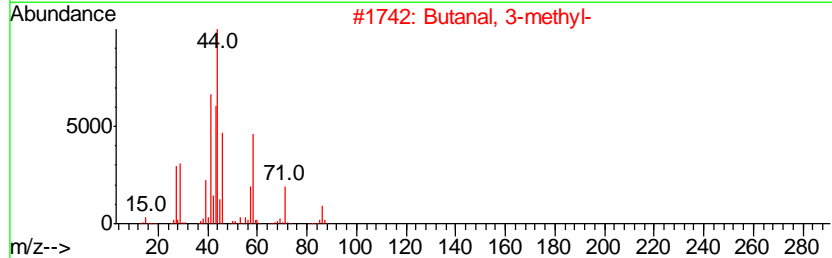
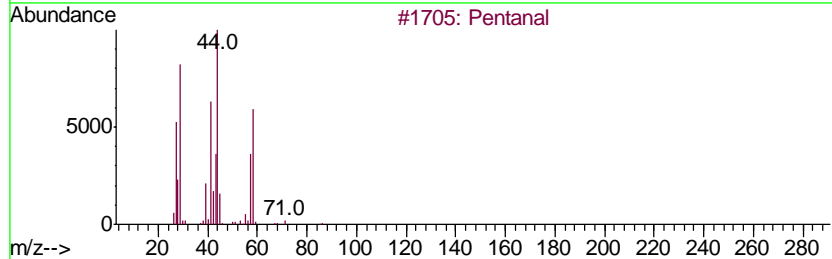
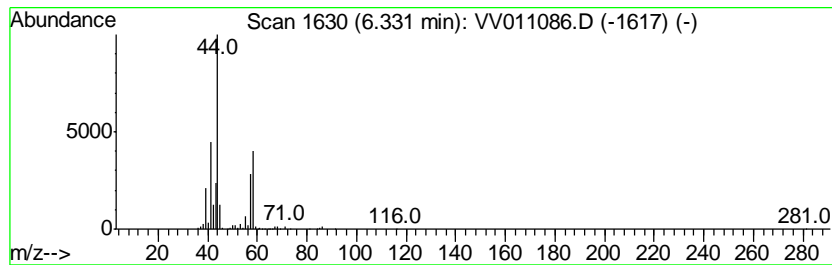
Quant Method : Z:\VOASRV\HPCHEM1\MSVOA_V\METHOD\SOM2VLM052819S.M
 Quant Title : VOC Analysis

TIC Library : C:\DATABASE\NIST11.L
 TIC Integration Parameters: LSCINT.P

 Peak Number 4 Pentanal Concentration Rank 3

R.T.	EstConc	Area	Relative to ISTD	R.T.
6.33	9.19 ug/L	308003	1,4-Difluorobenzene	5.66

Hit#	of	Tentative ID	MW	MolForm	CAS#	Qual
1	5	Pentanal	86	C5H10O	000110-62-3	91
2		Butanal, 3-methyl-	86	C5H10O	000590-86-3	64
3		Pentanal	86	C5H10O	000110-62-3	64
4		Pentanal	86	C5H10O	000110-62-3	43
5		Butanal, 3-methyl-	86	C5H10O	000590-86-3	42



Data Path : Z:\VOASRV\HPCHEM1\MSVOA V\DATA\VV052819\
 Data File : VV011086.D
 Acq On : 29 May 2019 03:35
 Operator : SY/MD
 Sample : K3016-15
 Misc : 5.46G/10ML/MSVOA V/SOIL
 ALS Vial : 1 Sample Multiplier: 1

Instrument :
 MSVOA_V
 ClientSampleID :
 A51D2

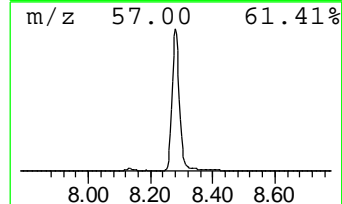
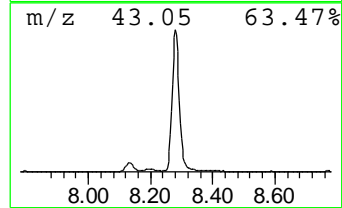
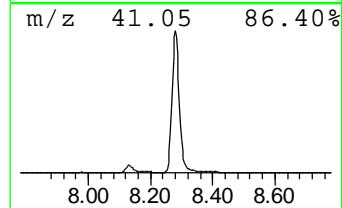
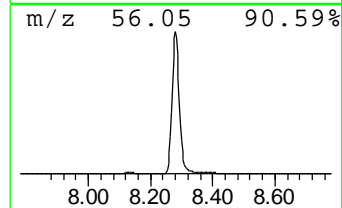
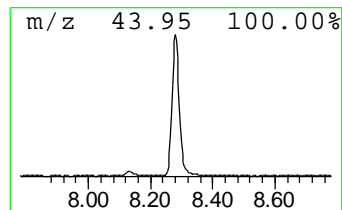
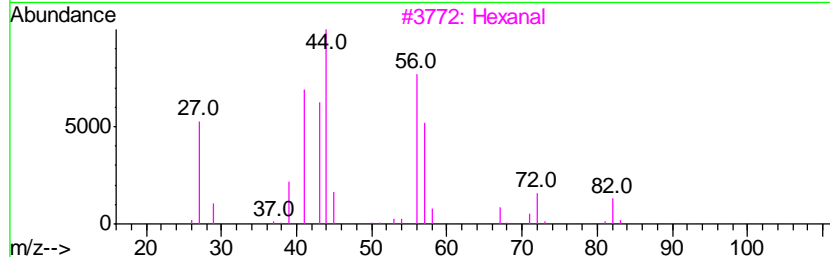
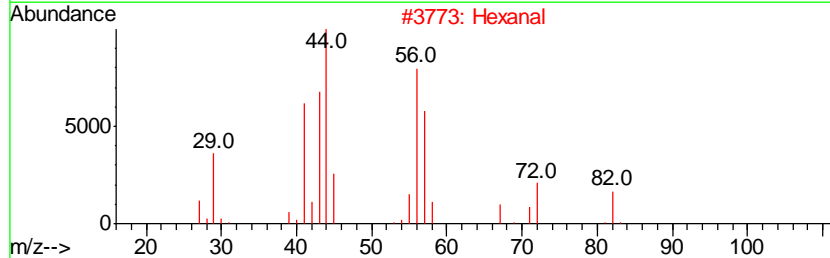
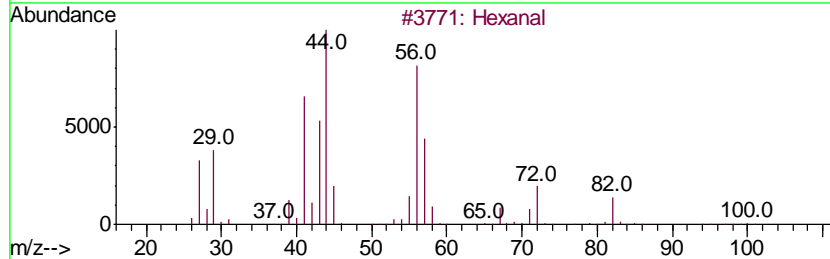
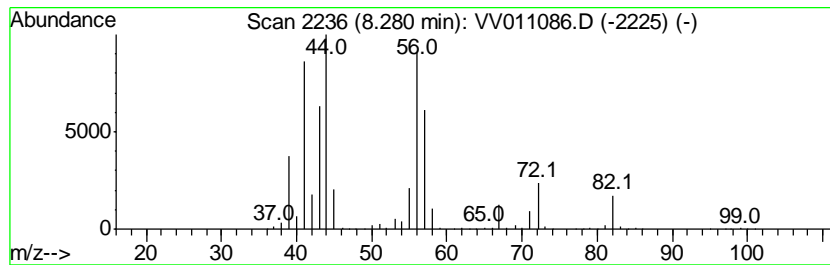
Quant Method : Z:\VOASRV\HPCHEM1\MSVOA_V\METHOD\SOM2VLM052819S.M
 Quant Title : VOC Analysis

TIC Library : C:\DATABASE\NIST11.L
 TIC Integration Parameters: LSCINT.P

 Peak Number 6 Hexanal Concentration Rank 1

R.T.	EstConc	Area	Relative to ISTD	R.T.
8.28	40.88 ug/L	1635670	Chlorobenzene-d5	8.89

Hit#	of	Tentative ID	MW	MolForm	CAS#	Qual
1	5	Hexanal	100	C6H12O	000066-25-1	90
2		Hexanal	100	C6H12O	000066-25-1	90
3		Hexanal	100	C6H12O	000066-25-1	90
4		Hexanal	100	C6H12O	000066-25-1	83
5		Glutaraldehyde	100	C5H8O2	000111-30-8	43



Data Path : Z:\VOASRV\HPCHEM1\MSVOA V\DATA\VV052819\
 Data File : VV011086.D
 Acq On : 29 May 2019 03:35
 Operator : SY/MD
 Sample : K3016-15
 Misc : 5.46G/10ML/MSVOA V/SOIL
 ALS Vial : 1 Sample Multiplier: 1

Instrument :
 MSVOA_V
 ClientSampled :
 A51D2

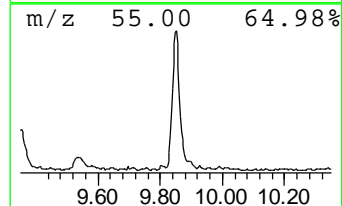
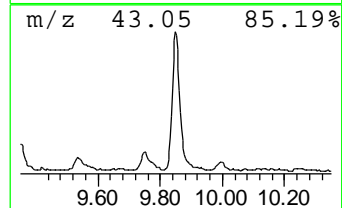
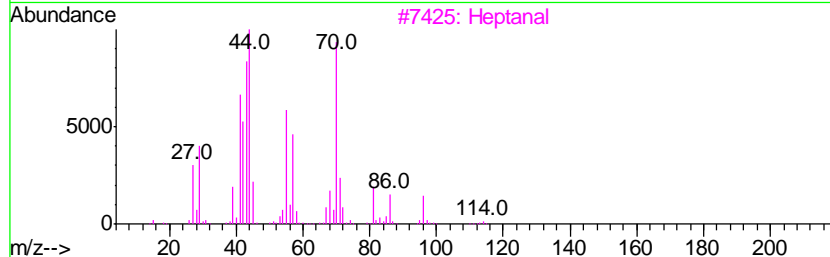
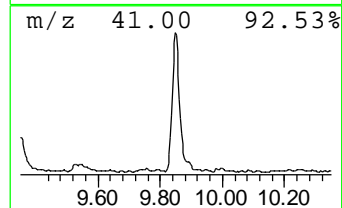
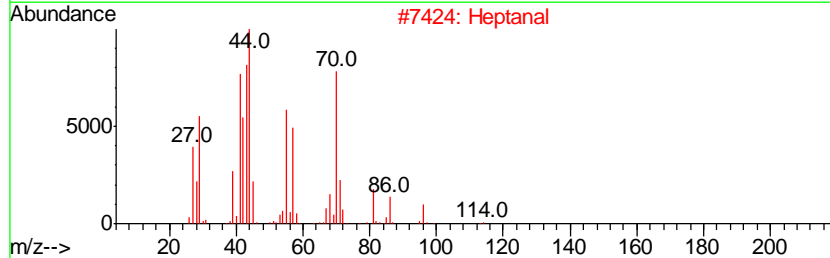
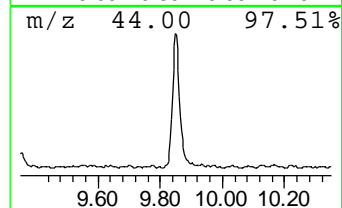
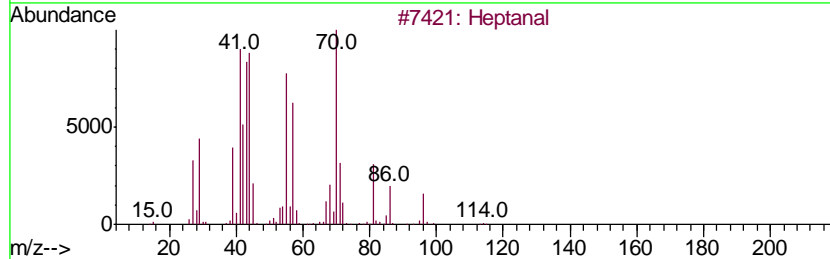
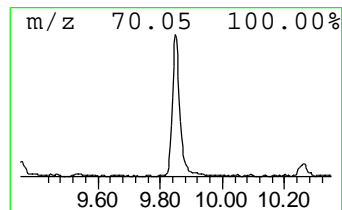
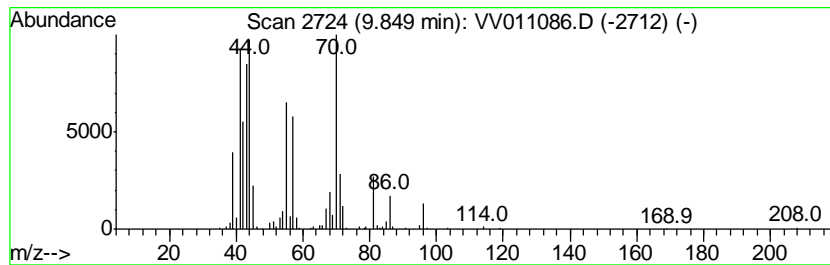
Quant Method : Z:\VOASRV\HPCHEM1\MSVOA_V\METHOD\SOM2VLM052819S.M
 Quant Title : VOC Analysis

TIC Library : C:\DATABASE\NIST11.L
 TIC Integration Parameters: LSCINT.P

 Peak Number 7 Heptanal Concentration Rank 4

R.T.	EstConc	Area	Relative to ISTD	R.T.
9.85	4.69 ug/L	187655	Chlorobenzene-d5	8.89

Hit#	of	Tentative ID	MW	MolForm	CAS#	Qual
1	5	Heptanal	114	C7H14O	000111-71-7	98
2		Heptanal	114	C7H14O	000111-71-7	96
3		Heptanal	114	C7H14O	000111-71-7	80
4		Heptanal	114	C7H14O	000111-71-7	70
5		Heptanal	114	C7H14O	000111-71-7	62



Data Path : Z:\VOASRV\HPCHEM1\MSVOA V\DATA\VV052819\
 Data File : VV011086.D
 Acq On : 29 May 2019 03:35
 Operator : SY/MD
 Sample : K3016-15
 Misc : 5.46G/10ML/MSVOA V/SOIL
 ALS Vial : 1 Sample Multiplier: 1

Instrument :
 MSVOA_V
 ClientSampled :
 A51D2

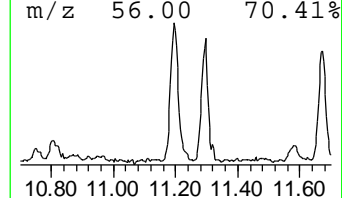
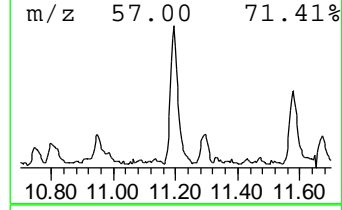
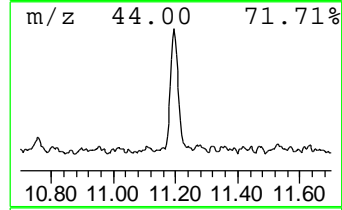
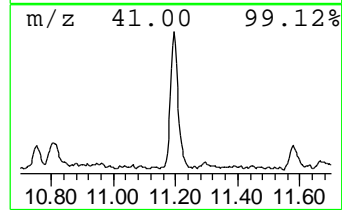
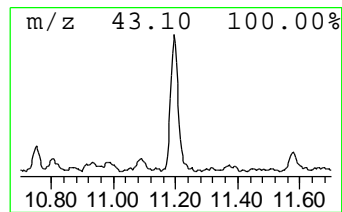
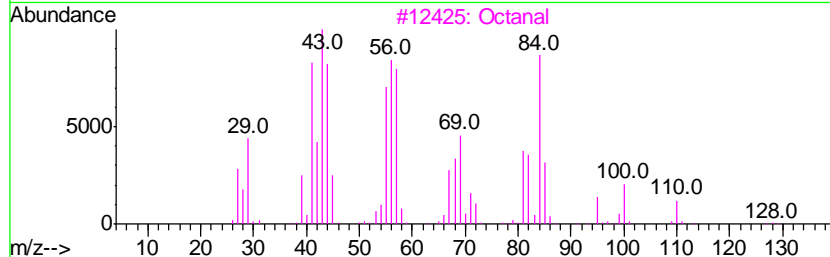
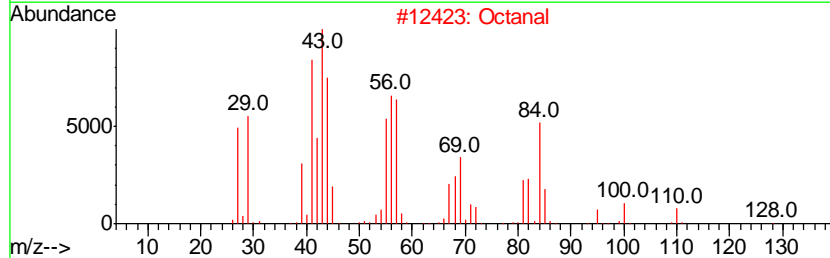
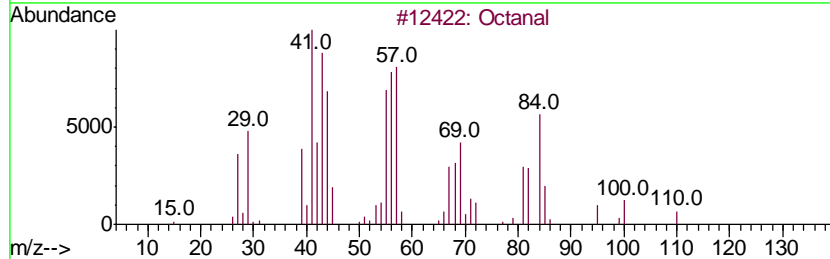
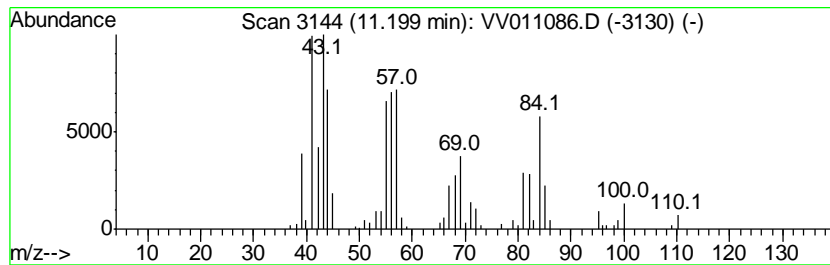
Quant Method : Z:\VOASRV\HPCHEM1\MSVOA_V\METHOD\SOM2VLM052819S.M
 Quant Title : VOC Analysis

TIC Library : C:\DATABASE\NIST11.L
 TIC Integration Parameters: LSCINT.P

 Peak Number 9 Octanal Concentration Rank 5

R.T.	EstConc	Area	Relative to ISTD	R.T.
11.20	4.49 ug/L	127096	1,4-Dichlorobenzene-d4	11.29

Hit#	of	Tentative ID	MW	MolForm	CAS#	Qual
1	5	Octanal	128	C8H16O	000124-13-0	91
2		Octanal	128	C8H16O	000124-13-0	91
3		Octanal	128	C8H16O	000124-13-0	91
4		Octanal	128	C8H16O	000124-13-0	87
5		Octanal	128	C8H16O	000124-13-0	72



Data Path : Z:\VOASRV\HPCHEM1\MSVOA V\DATA\VV052819\
 Data File : VV011086.D
 Acq On : 29 May 2019 03:35
 Operator : SY/MD
 Sample : K3016-15
 Misc : 5.46G/10ML/MSVOA V/SOIL
 ALS Vial : 1 Sample Multiplier: 1

Instrument :
 MSVOA_V
 ClientSampled :
 A51D2

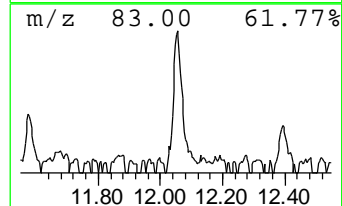
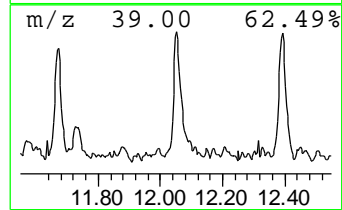
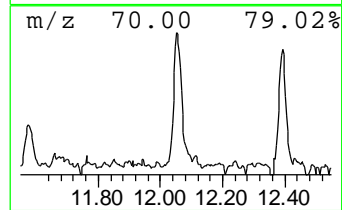
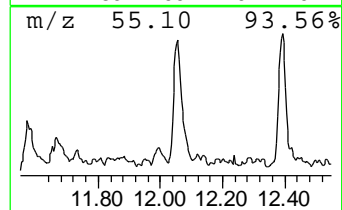
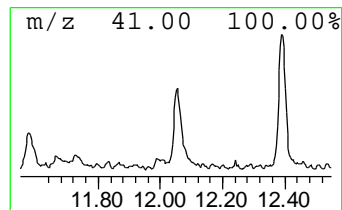
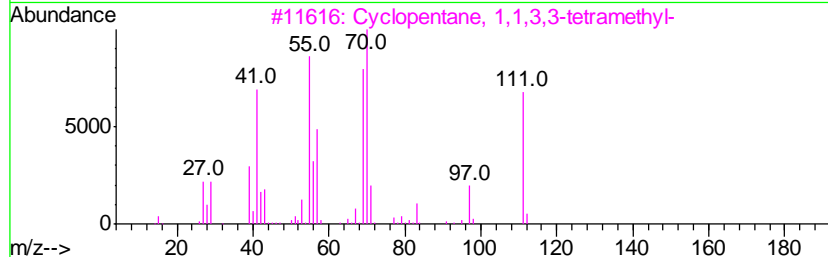
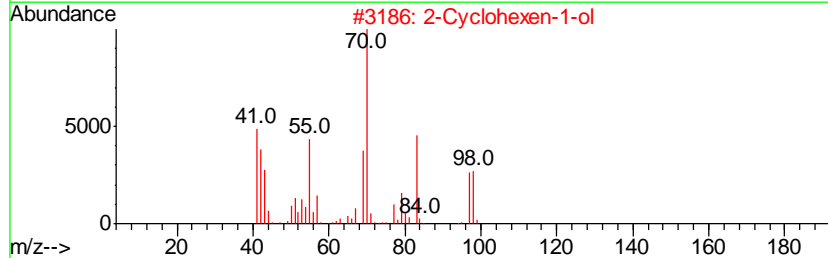
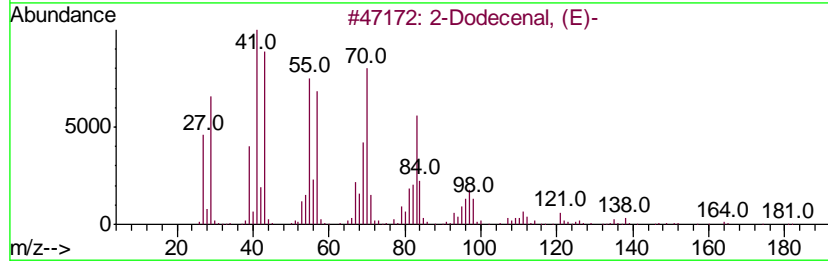
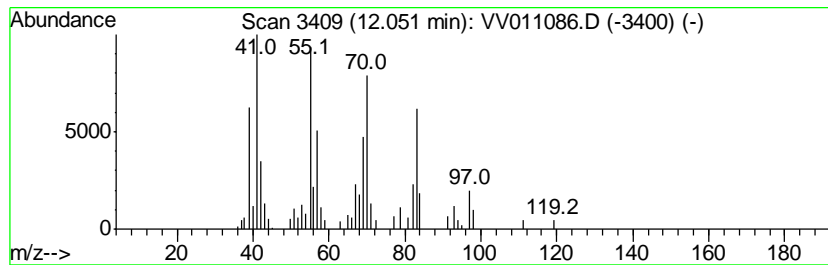
Quant Method : Z:\VOASRV\HPCHEM1\MSVOA_V\METHOD\SOM2VLM052819S.M
 Quant Title : VOC Analysis

TIC Library : C:\DATABASE\NIST11.L
 TIC Integration Parameters: LSCINT.P

 Peak Number 10 2-Dodecenal, (E)- Concentration Rank 10

R.T.	EstConc	Area	Relative to ISTD	R.T.
12.05	1.51 ug/L	42716	1,4-Dichlorobenzene-d4	11.29

Hit#	of	Tentative ID	MW	MolForm	CAS#	Qual
1	5	2-Dodecenal, (E)-	182	C12H22O	020407-84-5	86
2		2-Cyclohexen-1-ol	98	C6H10O	000822-67-3	46
3		Cyclopentane, 1,1,3,3-tetramethyl-	126	C9H18	050876-33-0	38
4		1-Pentene, 2,3-dimethyl-	98	C7H14	003404-72-6	38
5		2-Pentene, (E)-	70	C5H10	000646-04-8	35



Data Path : Z:\VOASRV\HPCHEM1\MSVOA V\DATA\VV052819\
 Data File : VV011086.D
 Acq On : 29 May 2019 03:35
 Operator : SY/MD
 Sample : K3016-15
 Misc : 5.46G/10ML/MSVOA V/SOIL
 ALS Vial : 1 Sample Multiplier: 1

Instrument :
 MSVOA_V
 ClientSampleID :
 A51D2

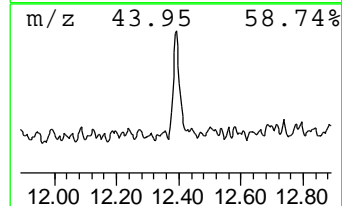
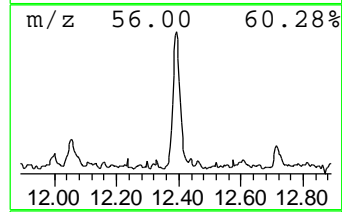
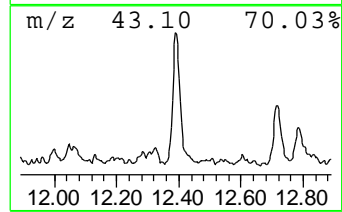
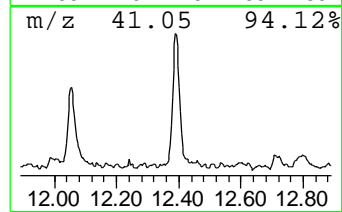
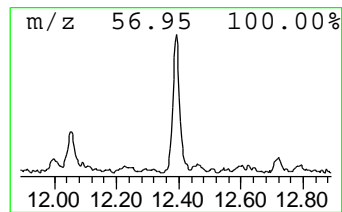
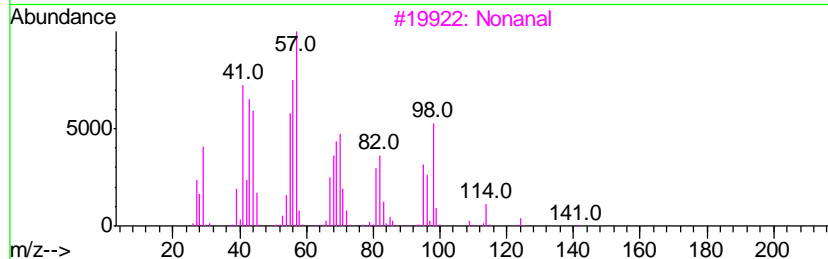
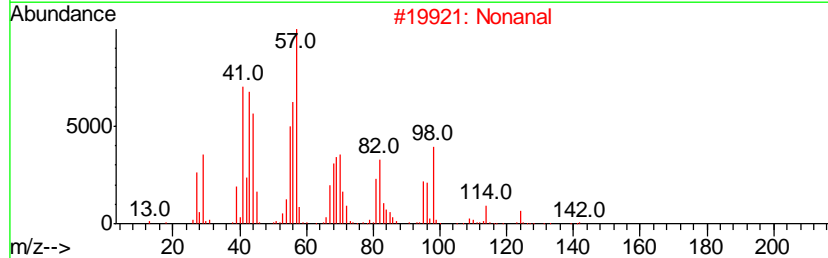
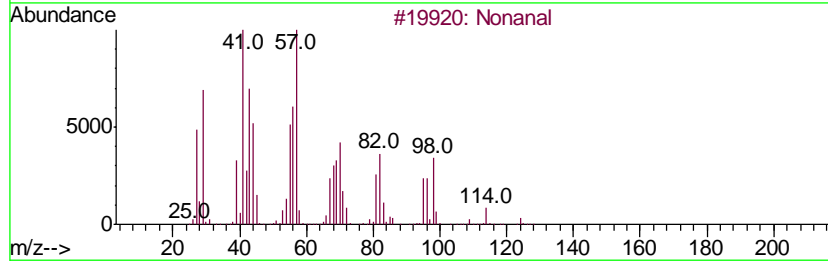
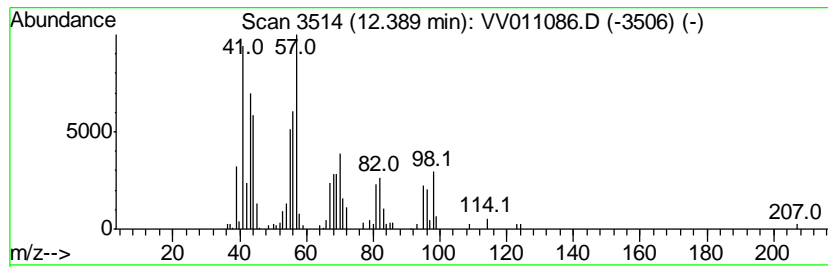
Quant Method : Z:\VOASRV\HPCHEM1\MSVOA_V\METHOD\SOM2VLM052819S.M
 Quant Title : VOC Analysis

TIC Library : C:\DATABASE\NIST11.L
 TIC Integration Parameters: LSCINT.P

 Peak Number 11 Nonanal Concentration Rank 8

R.T.	EstConc	Area	Relative to ISTD	R.T.
12.39	2.46 ug/L	69585	1,4-Dichlorobenzene-d4	11.29

Hit#	of	Tentative ID	MW	MolForm	CAS#	Qual
1	5	Nonanal	142	C9H18O	000124-19-6	91
2		Nonanal	142	C9H18O	000124-19-6	91
3		Nonanal	142	C9H18O	000124-19-6	80
4		Nonanal	142	C9H18O	000124-19-6	72
5		Cyclopentane, 1,2-dimethyl-	98	C7H14	002452-99-5	30



Data Path : Z:\VOASRV\HPCHEM1\MSVOA_V\DATA\VV052819\
Data File : VV011086.D
Acq On : 29 May 2019 03:35
Operator : SY/MD
Sample : K3016-15
Misc : 5.46G/10ML/MSVOA_V/SOIL
ALS Vial : 1 Sample Multiplier: 1

Instrument :
MSVOA_V
ClientSampleId :
A51D2

Quant Method : Z:\VOASRV\HPCHEM1\MSVOA_V\METHOD\SOM2VLM052819S.M
Quant Title : VOC Analysis

TIC Library : C:\DATABASE\NIST11.L
TIC Integration Parameters: LSCINT.P

TIC Top Hit name	RT	EstConc	Units	Response	--Internal Standard--			
					#	RT	Resp	Conc
Butanal	3.75	2.9	ug/L	96666	1	5.66	838325	25.0
Butanal, 3-methyl-	5.37	1.6	ug/L	53172	1	5.66	838325	25.0
Pentanal	6.33	9.2	ug/L	308003	1	5.66	838325	25.0
Hexanal	8.28	40.9	ug/L	1635670	2	8.89	1000190	25.0
Heptanal	9.85	4.7	ug/L	187655	2	8.89	1000190	25.0
Octanal	11.20	4.5	ug/L	127096	3	11.29	707402	25.0
2-Dodecenal, (E)-	12.05	1.5	ug/L	42716	3	11.29	707402	25.0
Nonanal	12.39	2.5	ug/L	69585	3	11.29	707402	25.0