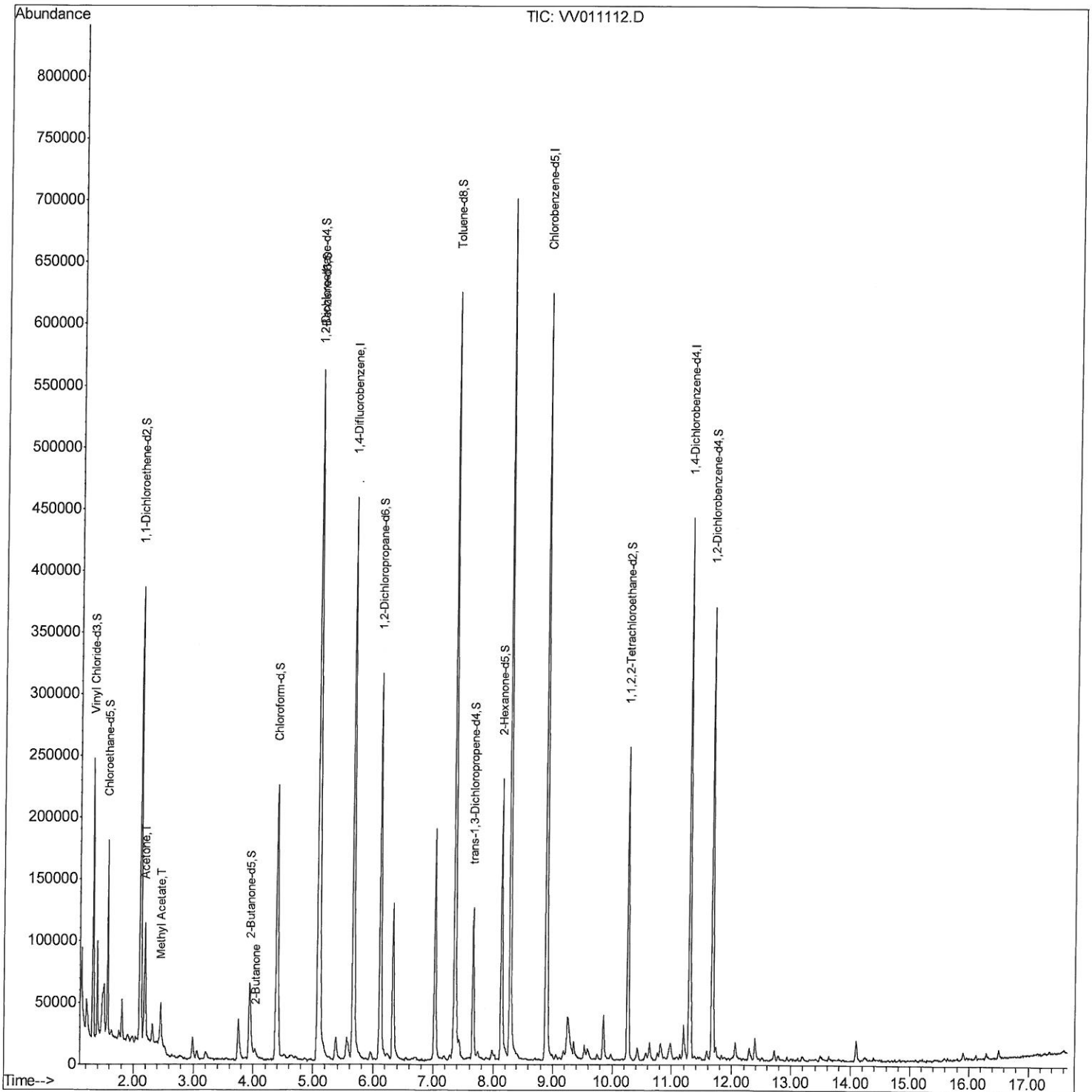


Data File : VV011112.D  
Acq On : 29 May 2019 17:39  
Operator : SY/MD  
Sample : K3017-17  
Misc : 4.70G/10ML/MSVOA\_V/SOIL  
ALS Vial : 1 Sample Multiplier: 1

Instrument :  
MSVOA\_V  
Client Sampled :  
A51F0

Manual Integrations  
APPROVED  
MMDadoda  
6/1/2019 4:43:54 AM

Quant Time: May 30 04:37:11 2019  
Quant Method : Z:\VOASRV\HPCHEM1\MSVOA\_V\METHOD\SOM2VLM052819S.M  
Quant Title : VOC Analysis  
QLast Update : Thu May 30 03:51:47 2019  
Response via : Initial Calibration



Data Path : Z:\VOASRV\HPCHEM1\MSVOA\_V\DATA\VV052919\  
Quantitation Report (Qedit)

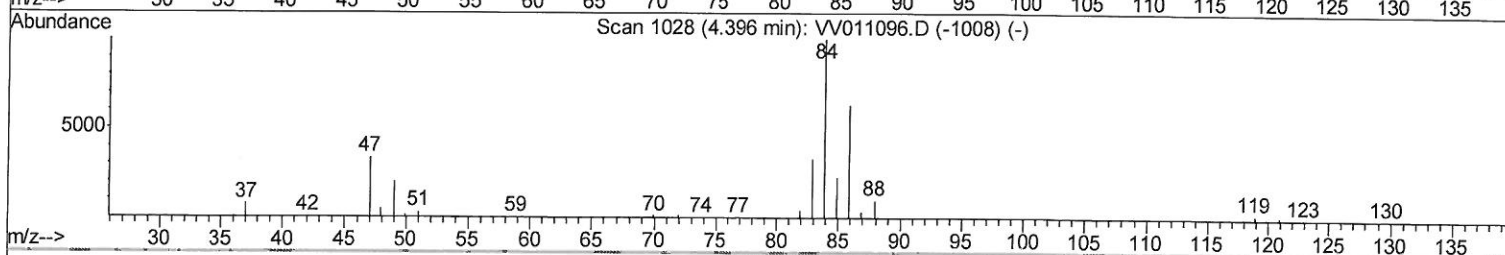
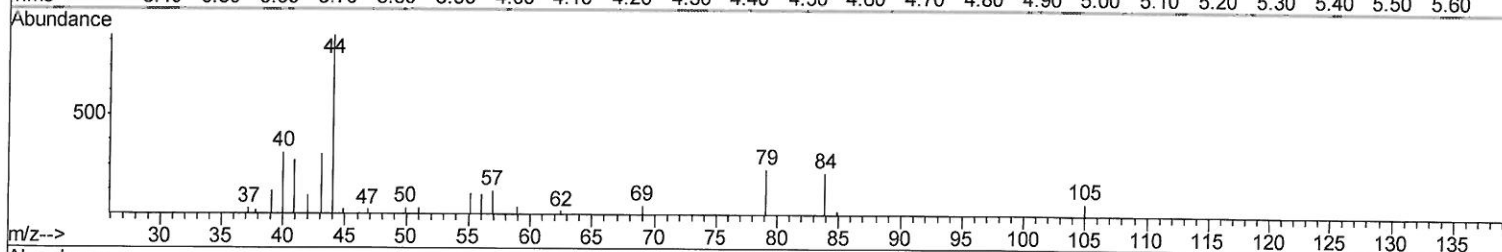
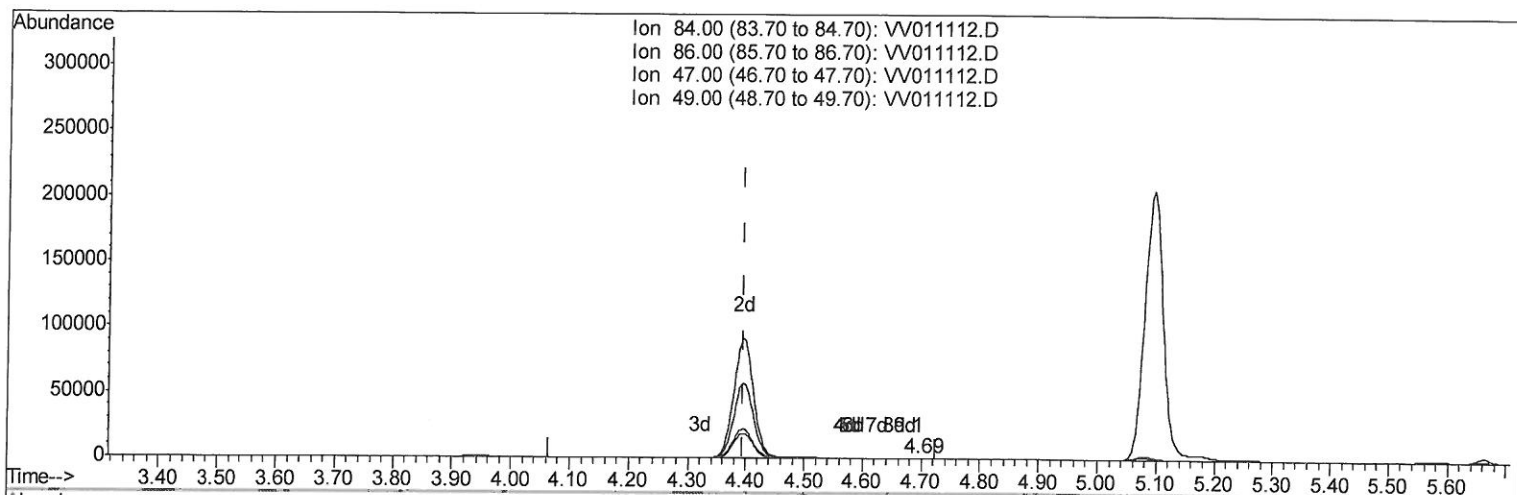
Data File : VV011112.D  
Acq On : 29 May 2019 17:39  
Operator : SY/MD  
Sample : K3017-17  
Misc : 4.70G/10ML/MSVOA\_V/SOIL  
ALS Vial : 1 Sample Multiplier: 1

Instrument :  
MSVOA\_V  
ClientSampleId :  
A51F0

Manual Integrations  
APPROVED

MMDadoda  
6/1/2019 4:43:54 AM

Quant Time: May 30 03:56:46 2019  
Quant Method : Z:\VOASRV\HPCHEM1\MSVOA\_V\METHOD\SOM2VLM052819S.M  
Quant Title : VOC Analysis  
QLast Update : Thu May 30 03:51:47 2019  
Response via : Initial Calibration



TIC: VV011112.D

(24) Chloroform-d (S)  
4.695min (+0.299) 0.02ug/L  
response 178

Ion	Exp%	Act%
84.00	100	100
86.00	62.60	56.18
47.00	50.50	55.06
49.00	29.00	22.47

Data Path : Z:\VOASRV\HPCHEM1\MSVOA\_V\DATA\VV052919\  
Quantitation Report (Qedit)

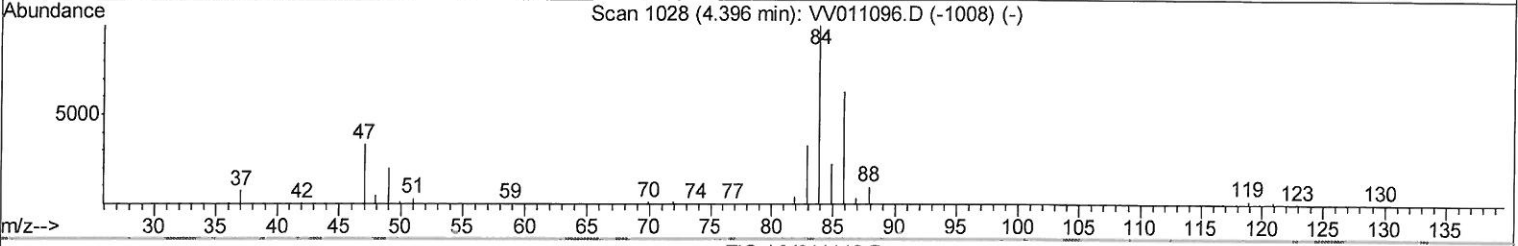
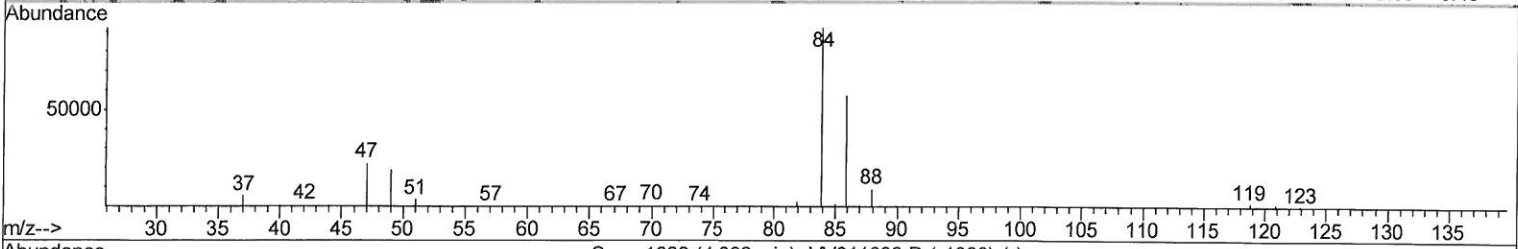
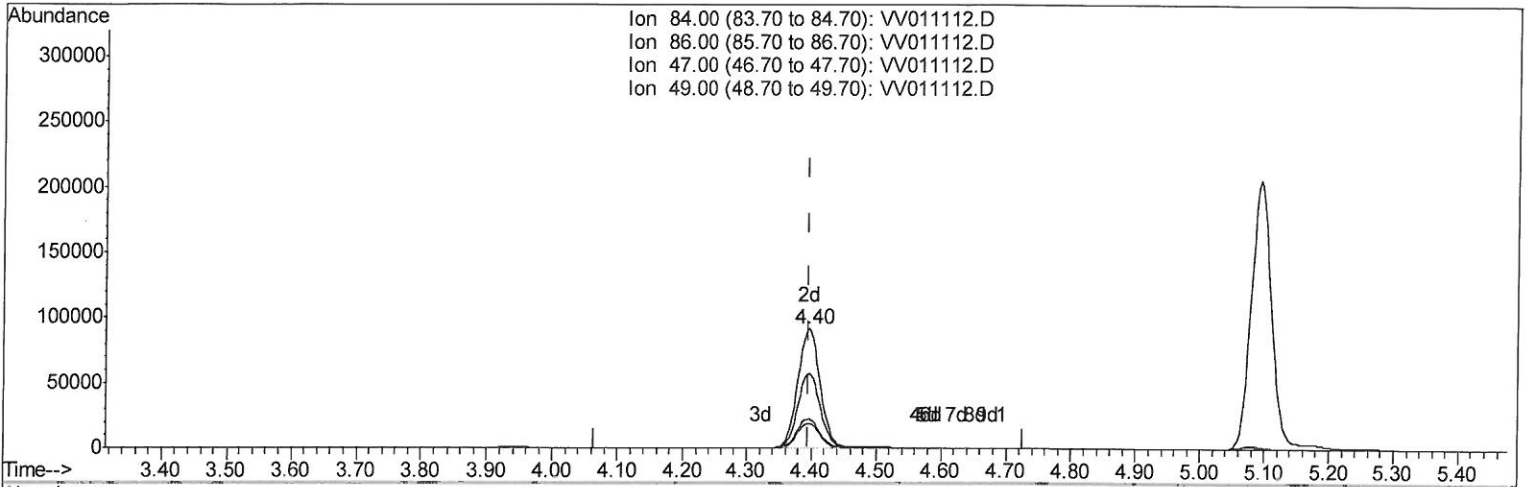
Data File : VV011112.D  
Acq On : 29 May 2019 17:39  
Operator : SY/MD  
Sample : K3017-17  
Misc : 4.70G/10ML/MSVOA\_V/SOIL  
ALS Vial : 1 Sample Multiplier: 1

Instrument :  
MSVOA\_V  
Client Sampled :  
A51F0

Manual Integrations  
APPROVED

MMDadoda  
6/1/2019 4:43:54 AM

Quant Time: May 30 03:56:46 2019  
Quant Method : Z:\VOASRV\HPCHEM1\MSVOA\_V\METHOD\SOM2VLM052819S.M  
Quant Title : VOC Analysis  
QLast Update : Thu May 30 03:51:47 2019  
Response via : Initial Calibration



TIC: VV011112.D

(24) Chloroform-d (S)

4.396min (-0.000) 23.72ug/L m > 05/31/19 SY

response 218513

Ion	Exp%	Act%
84.00	100	100
86.00	62.60	0.05#
47.00	50.50	0.04#
49.00	29.00	0.02#

Data Path : Z:\VOASRV\HPCHEM1\MSVOA\_V\DATA\VV052919\  
Quantitation Report (QT Reviewed)

Data File : VV011112.D  
Acq On : 29 May 2019 17:39  
Operator : SY/MD  
Sample : K3017-17  
Misc : 4.70G/10ML/MSVOA\_V/SOIL  
ALS Vial : 1 Sample Multiplier: 1

Instrument :  
MSVOA\_V  
Client Sampled :  
A51F0

Manual Integrations  
APPROVED

MMDadoda  
6/1/2019 4:43:54 AM

Quant Time: May 30 04:37:11 2019  
Quant Method : Z:\VOASRV\HPCHEM1\MSVOA\_V\METHOD\SOM2VLM052819S.M  
Quant Title : VOC Analysis  
QLast Update : Thu May 30 03:51:47 2019  
Response via : Initial Calibration

Internal Standards	R.T.	QIon	Response	Conc	Units	Dev(Min)
1) 1,4-Difluorobenzene	5.66	114	379884	25.00	ug/L	0.00
28) Chlorobenzene-d5	8.89	117	316285	25.00	ug/L	0.00
60) 1,4-Dichlorobenzene-d4	11.30	152	106005	25.00	ug/L	0.00

System Monitoring Compounds

4) Vinyl Chloride-d3	1.31	65	112585	21.62	ug/L	0.00
Spiked Amount	25.000	Range	30 - 150	Recovery	=	86.48%
7) Chloroethane-d5	1.56	69	88480	23.80	ug/L	0.00
Spiked Amount	25.000	Range	30 - 150	Recovery	=	95.20%
10) 1,1-Dichloroethene-d2	2.12	63	176641	18.23	ug/L	0.00
Spiked Amount	25.000	Range	45 - 110	Recovery	=	72.92%
20) 2-Butanone-d5	3.94	46	100675	56.08	ug/L	0.00
Spiked Amount	50.000	Range	20 - 135	Recovery	=	112.16%
24) Chloroform-d	4.40	84	218513m	23.72	ug/L	0.00
Spiked Amount	25.000	Range	40 - 150	Recovery	=	94.88%
26) 1,2-Dichloroethane-d4	5.08	65	139150	23.63	ug/L	0.00
Spiked Amount	25.000	Range	70 - 130	Recovery	=	94.52%
29) Benzene-d6	5.09	84	451023	24.35	ug/L	0.00
Spiked Amount	25.000	Range	20 - 135	Recovery	=	97.40%
33) 1,2-Dichloropropane-d6	6.11	67	145973	24.77	ug/L	0.00
Spiked Amount	25.000	Range	70 - 120	Recovery	=	99.08%
37) Toluene-d8	7.36	98	401362	23.51	ug/L	0.00
Spiked Amount	25.000	Range	30 - 130	Recovery	=	94.04%
38) trans-1,3-Dichloropropene-	7.66	79	65127	23.73	ug/L	0.00
Spiked Amount	25.000	Range	30 - 135	Recovery	=	94.92%
39) 2-Hexanone-d5	8.13	63	78030	60.79	ug/L	0.00
Spiked Amount	50.000	Range	20 - 135	Recovery	=	121.58%
48) 1,1,2,2-Tetrachloroethane-	10.26	84	118403	23.37	ug/L	0.00
Spiked Amount	25.000	Range	45 - 120	Recovery	=	93.48%
61) 1,2-Dichlorobenzene-d4	11.67	152	88789	21.18	ug/L	0.00
Spiked Amount	25.000	Range	75 - 120	Recovery	=	84.72%

05/31/19 SCY

Target Compounds					Qvalue
13) Acetone	2.19	43	89754	44.136	ug/L 100
15) Methyl Acetate	2.46	43	32266	10.993	ug/L # 100
21) 2-Butanone	4.03	43	12665	5.057	ug/L 92

(#) = qualifier out of range (m) = manual integration (+) = signals summed