

Data Path : Z:\voasrv\HPCHEM1\MSVOA V\Data\VV053019\
 Data File : VV011162.D
 Acq On : 31 May 2019 05:12
 Operator : SY/MD
 Sample : K3017-09RE
 Misc : 2.79G/10ML/MSVOA V/SOIL
 ALS Vial : 1 Sample Multiplier: 1

Instrument :
 MSVOA_V
 ClientSampleId :
 A51E2RE

Integration Parameters: LSCINT.P

Integrator: RTE
 Smoothing : OFF
 Sampling : 1
 Start Thrs: 0.2
 Stop Thrs : 0

Filtering: 5
 Min Area: 0 % of largest Peak
 Max Peaks: 100
 Peak Location: TOP

If leading or trailing edge < 100 prefer < Baseline drop else tangent >
 Peak separation: 5

Method : Z:\VOASRV\HPCHEM1\MSVOA_V\METHOD\SOM2VLM053019S.M
 Title : VOC Analysis

Signal : TIC

peak #	R.T. min	first scan	max scan	last scan	PK TY	peak height	corr. area	corr. % max.	% of total
1	1.309	62	68	75	rVB	214308	199731	15.53%	2.161%
2	2.113	310	318	329	rVB	300920	436191	33.92%	4.719%
3	2.184	332	340	357	rVB	258694	377973	29.39%	4.089%
4	2.450	415	423	437	rVB	105449	161700	12.57%	1.749%
5	2.746	513	515	517	rBV3	725	222	0.02%	0.002%
6	2.868	551	553	555	rBV3	1222	886	0.07%	0.010%
7	2.936	572	574	577	rBV2	936	484	0.04%	0.005%
8	2.984	577	589	602	rVV2	8742	20574	1.60%	0.223%
9	3.103	623	626	627	rBV2	745	340	0.03%	0.004%
10	3.142	634	638	639	rBV3	1077	619	0.05%	0.007%
11	3.344	699	701	704	rBV4	1033	377	0.03%	0.004%
12	3.357	704	705	711	rVB4	1431	965	0.08%	0.010%
13	3.383	711	713	717	rBV4	829	644	0.05%	0.007%
14	3.402	717	719	721	rBV3	433	189	0.01%	0.002%
15	3.434	727	729	730	rBV	808	308	0.02%	0.003%
16	3.489	743	746	748	rBV4	1145	627	0.05%	0.007%
17	3.634	789	791	793	rBV2	670	394	0.03%	0.004%
18	3.659	797	799	801	rBV3	834	246	0.02%	0.003%
19	3.685	804	807	809	rVB3	575	352	0.03%	0.004%
20	3.740	809	824	850	rBV3	108670	269027	20.92%	2.911%
21	3.929	873	883	903	rBV2	56723	147113	11.44%	1.592%
22	4.315	1001	1003	1006	rVB3	1010	505	0.04%	0.005%
23	4.392	1006	1027	1054	rBV2	218580	599492	46.62%	6.486%
24	4.865	1172	1174	1175	rVB2	498	184	0.01%	0.002%
25	4.878	1176	1178	1182	rVB4	1026	608	0.05%	0.007%
26	4.897	1182	1184	1187	rBV3	855	679	0.05%	0.007%
27	4.939	1195	1197	1198	rBV2	390	170	0.01%	0.002%
28	4.946	1198	1199	1201	rVB	605	194	0.02%	0.002%
29	4.974	1206	1208	1210	rBV3	617	298	0.02%	0.003%
30	5.016	1218	1221	1222	rBV3	587	252	0.02%	0.003%
31	5.087	1222	1243	1270	rBV2	522667	1285989	100.00%	13.914%
32	5.466	1357	1361	1362	rBV4	810	435	0.03%	0.005%
33	5.656	1409	1420	1439	rVB	388692	767239	59.66%	8.301%
34	5.990	1518	1524	1546	rBV2	14768	31344	2.44%	0.339%

Data Path : Z:\voasrv\HPCHEM1\MSVOA V\Data\VV053019\
 Data File : VV011162.D
 Acq On : 31 May 2019 05:12
 Operator : SY/MD
 Sample : K3017-09RE
 Misc : 2.79G/10ML/MSVOA V/SOIL
 ALS Vial : 1 Sample Multiplier: 1

Instrument :
 MSVOA_V
 ClientSampleId :
 A51E2RE

Integration Parameters: LSCINT.P

Integrator: RTE
 Smoothing : OFF
 Sampling : 1
 Start Thrs: 0.2
 Stop Thrs : 0

Filtering: 5
 Min Area: 0 % of largest Peak
 Max Peaks: 100
 Peak Location: TOP

If leading or trailing edge < 100 prefer < Baseline drop else tangent >
 Peak separation: 5

Method : Z:\VOASRV\HPCHEM1\MSVOA_V\METHOD\SOM2VLM053019S.M
 Title : VOC Analysis

35	6.113	1549	1562	1584	rVB	294556	593430	46.15%	6.421%
36	6.325	1619	1628	1648	rBV	97259	181825	14.14%	1.967%
37	6.527	1685	1691	1693	rBV6	1904	1862	0.14%	0.020%
38	6.650	1720	1729	1730	rBV7	3944	4600	0.36%	0.050%
39	6.852	1789	1792	1796	rBV5	1501	1150	0.09%	0.012%
40	6.900	1803	1807	1813	rBV7	1417	1590	0.12%	0.017%
41	6.939	1817	1819	1820	rBV2	764	306	0.02%	0.003%
42	6.968	1826	1828	1829	rBV2	1282	588	0.05%	0.006%
43	7.026	1836	1846	1860	rVB	147798	259023	20.14%	2.802%
44	7.251	1913	1916	1917	rBV3	767	558	0.04%	0.006%
45	7.354	1930	1948	1962	rBV	531690	1021447	79.43%	11.051%
46	7.598	2017	2024	2026	rBV8	5300	5402	0.42%	0.058%
47	7.662	2034	2044	2055	rBV	90782	152100	11.83%	1.646%
48	7.971	2129	2140	2155	rBV5	18536	48306	3.76%	0.523%
49	8.132	2179	2190	2220	rBV	199260	368063	28.62%	3.982%
50	8.280	2226	2236	2264	rBV	562407	917038	71.31%	9.922%
51	8.531	2312	2314	2317	rBV4	1075	665	0.05%	0.007%
52	8.794	2394	2396	2398	rBV2	736	327	0.03%	0.004%
53	8.894	2410	2427	2451	rBV	400809	677977	52.72%	7.335%
54	9.177	2510	2515	2517	rBV4	3965	4049	0.31%	0.044%
55	9.521	2612	2622	2638	rBV	49514	115262	8.96%	1.247%
56	10.125	2807	2810	2812	rBV4	931	524	0.04%	0.006%
57	10.357	2880	2882	2884	rBV3	956	401	0.03%	0.004%
58	10.514	2927	2931	2933	rBV4	1698	1235	0.10%	0.013%
59	10.559	2933	2945	2956	rVV4	11704	26044	2.03%	0.282%
60	11.293	3164	3173	3192	rVB2	159049	268604	20.89%	2.906%
61	11.579	3253	3262	3271	rBV2	4948	9594	0.75%	0.104%
62	11.672	3280	3291	3303	rBV	119541	199592	15.52%	2.159%
63	11.829	3332	3340	3348	rBV	4366	8138	0.63%	0.088%
64	12.292	3475	3484	3498	rVB2	11649	19416	1.51%	0.210%
65	12.781	3627	3636	3643	rBV10	7235	12963	1.01%	0.140%
66	12.887	3667	3669	3671	rVB3	1110	418	0.03%	0.005%
67	12.916	3676	3678	3680	rBV3	1476	733	0.06%	0.008%
68	13.000	3700	3704	3709	rBV7	1821	1772	0.14%	0.019%
69	13.109	3734	3738	3739	rBV3	1455	989	0.08%	0.011%
70	13.373	3816	3820	3823	rBV6	1127	803	0.06%	0.009%
71	13.630	3894	3900	3907	rBV7	5079	7620	0.59%	0.082%

Data Path : Z:\voasrv\HPCHEM1\MSVOA V\Data\VV053019\
 Data File : VV011162.D
 Acq On : 31 May 2019 05:12
 Operator : SY/MD
 Sample : K3017-09RE
 Misc : 2.79G/10ML/MSVOA V/SOIL
 ALS Vial : 1 Sample Multiplier: 1

Instrument :
 MSVOA_V
 ClientSampleId :
 A51E2RE

Integration Parameters: LSCINT.P

Integrator: RTE
 Smoothing : OFF Filtering: 5
 Sampling : 1 Min Area: 0 % of largest Peak
 Start Thrs: 0.2 Max Peaks: 100
 Stop Thrs : 0 Peak Location: TOP

If leading or trailing edge < 100 prefer < Baseline drop else tangent >
 Peak separation: 5

Method : Z:\VOASRV\HPCHEM1\MSVOA_V\METHOD\SOM2VLM053019S.M
 Title : VOC Analysis

72	13.698	3918	3921	3922	rBV3	1308	772	0.06%	0.008%
73	13.775	3943	3945	3948	rBV4	1131	717	0.06%	0.008%
74	13.845	3965	3967	3969	rBV2	1055	580	0.05%	0.006%
75	13.945	3994	3998	3999	rBV3	1360	984	0.08%	0.011%
76	14.013	4017	4019	4021	rVB3	802	238	0.02%	0.003%
77	14.093	4035	4044	4052	rBV2	5059	9882	0.77%	0.107%
78	14.228	4077	4086	4087	rBV9	2145	2983	0.23%	0.032%
79	14.334	4114	4119	4120	rBV3	1384	1158	0.09%	0.013%
80	14.730	4240	4242	4244	rVB3	1291	552	0.04%	0.006%
81	14.794	4260	4262	4266	rBV3	784	567	0.04%	0.006%
82	14.845	4273	4278	4279	rBV4	998	701	0.05%	0.008%
83	15.386	4439	4446	4448	rBV8	1385	1754	0.14%	0.019%
84	15.534	4490	4492	4495	rBV4	1869	1084	0.08%	0.012%

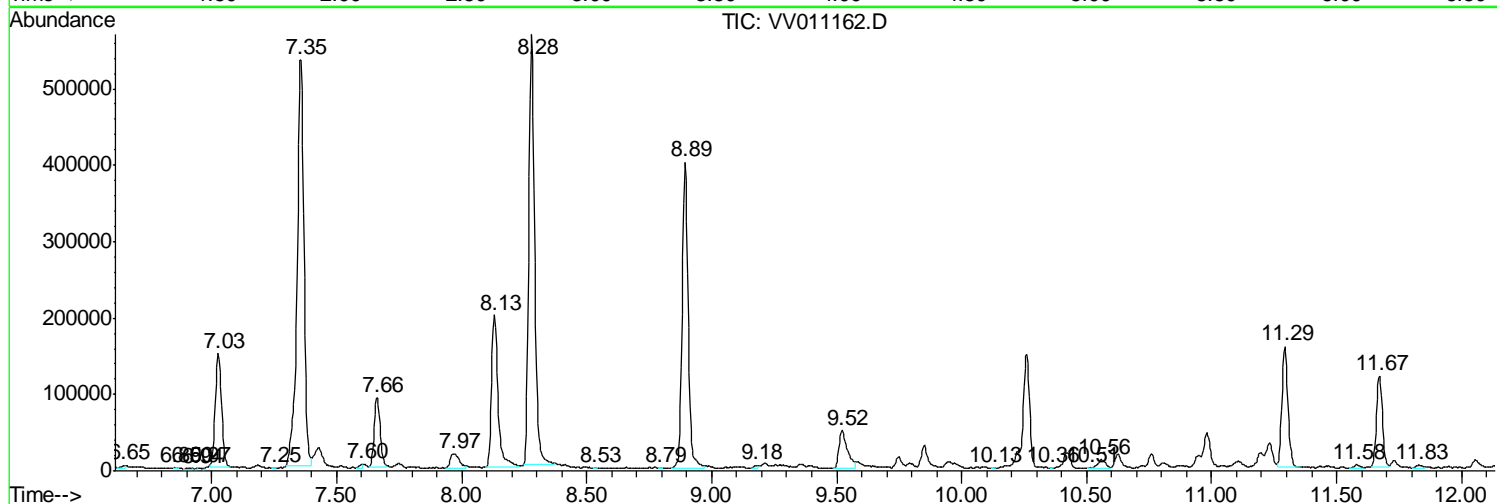
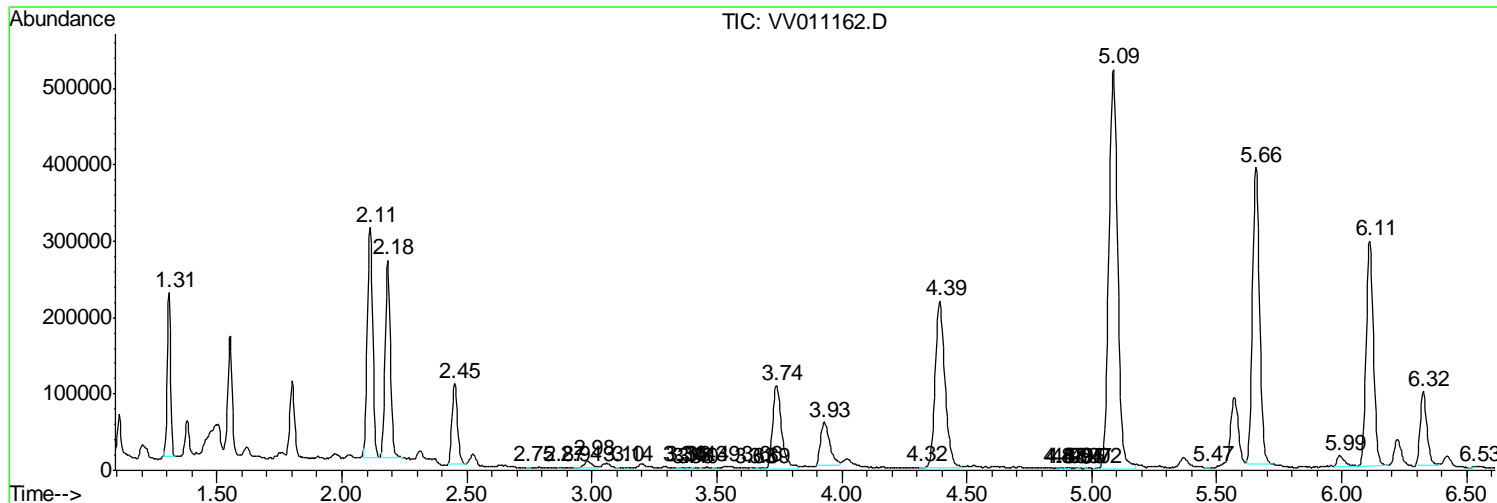
Sum of corrected areas: 9242737

Data Path : Z:\voasrv\HPCHEM1\MSVOA V\Data\VV053019\
 Data File : VV011162.D
 Acq On : 31 May 2019 05:12
 Operator : SY/MD
 Sample : K3017-09RE
 Misc : 2.79G/10ML/MSVOA V/SOIL
 ALS Vial : 1 Sample Multiplier: 1

Instrument :
 MSVOA_V
 ClientSampleId :
 A51E2RE

Quant Method : Z:\VOASRV\HPCHEM1\MSVOA_V\METHOD\SOM2VLM053019S.M
 Quant Title : VOC Analysis

TIC Library : C:\DATABASE\NIST11.L
 TIC Integration Parameters: LSCINT.P



Data Path : Z:\voasrv\HPCHEM1\MSVOA V\Data\VV053019\
 Data File : VV011162.D
 Acq On : 31 May 2019 05:12
 Operator : SY/MD
 Sample : K3017-09RE
 Misc : 2.79G/10ML/MSVOA V/SOIL
 ALS Vial : 1 Sample Multiplier: 1

Instrument :
 MSVOA_V
 ClientSampled :
 A51E2RE

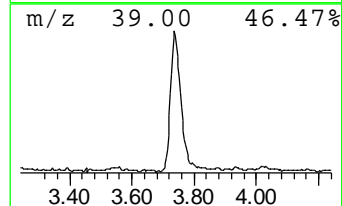
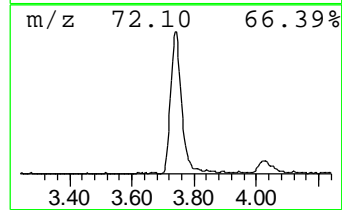
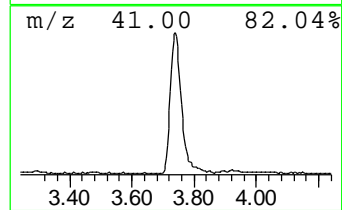
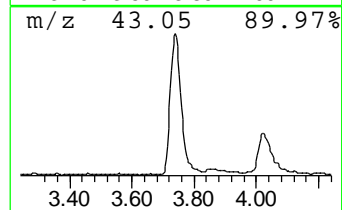
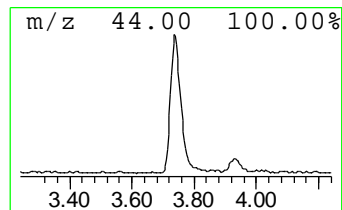
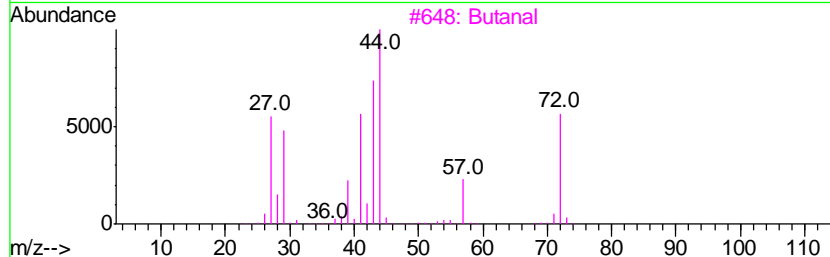
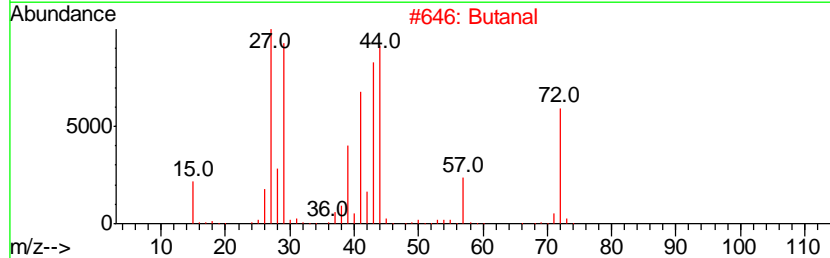
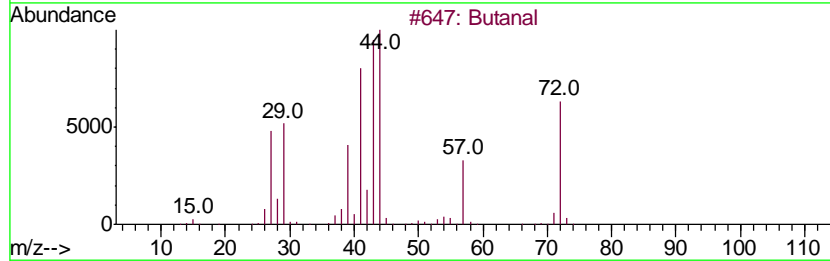
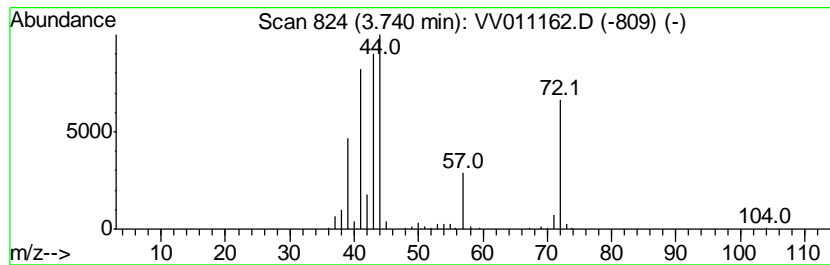
Quant Method : Z:\VOASRV\HPCHEM1\MSVOA_V\METHOD\SOM2VLM053019S.M
 Quant Title : VOC Analysis

TIC Library : C:\DATABASE\NIST11.L
 TIC Integration Parameters: LSCINT.P

 Peak Number 1 Butanal Concentration Rank 2

R.T.	EstConc	Area	Relative to ISTD	R.T.
3.74	8.77 ug/L	269027	1,4-Difluorobenzene	5.66

Hit#	of	Tentative ID	MW	MolForm	CAS#	Qual
1	5	Butanal	72	C4H8O	000123-72-8	94
2		Butanal	72	C4H8O	000123-72-8	91
3		Butanal	72	C4H8O	000123-72-8	58
4		Butanal	72	C4H8O	000123-72-8	53
5		Ethene, ethoxy-	72	C4H8O	000109-92-2	47



Data Path : Z:\voasrv\HPCHEM1\MSVOA V\Data\VV053019\
 Data File : VV011162.D
 Acq On : 31 May 2019 05:12
 Operator : SY/MD
 Sample : K3017-09RE
 Misc : 2.79G/10ML/MSVOA V/SOIL
 ALS Vial : 1 Sample Multiplier: 1

Instrument :
 MSVOA_V
 ClientSampleID :
 A51E2RE

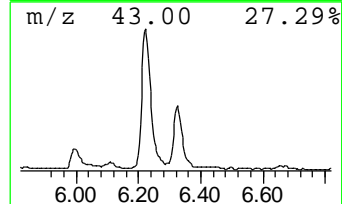
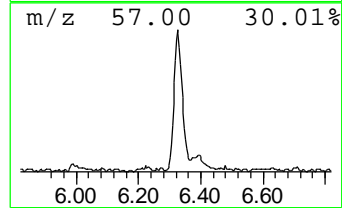
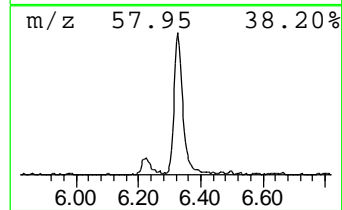
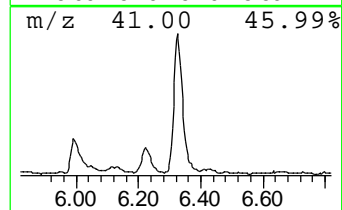
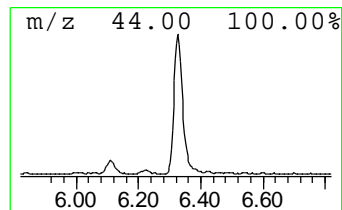
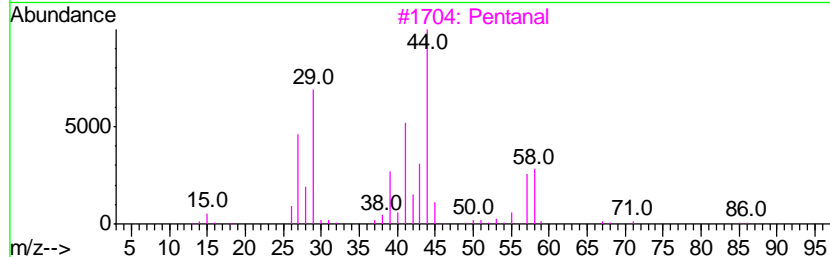
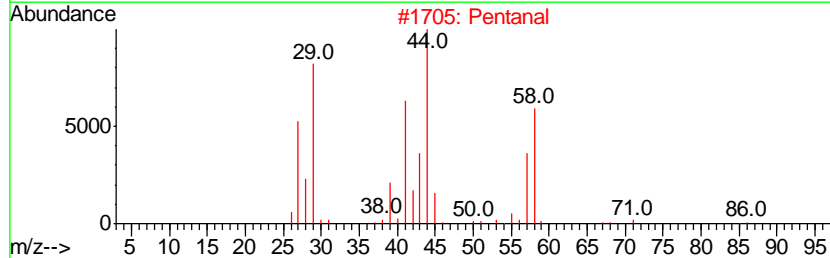
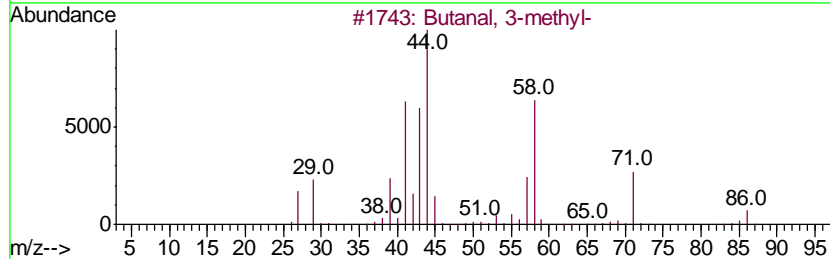
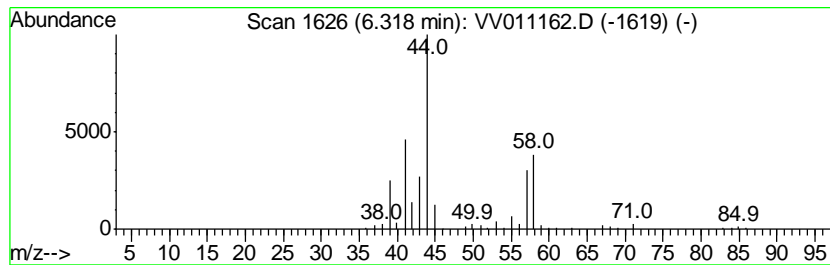
Quant Method : Z:\VOASRV\HPCHEM1\MSVOA_V\METHOD\SOM2VLM053019S.M
 Quant Title : VOC Analysis

TIC Library : C:\DATABASE\NIST11.L
 TIC Integration Parameters: LSCINT.P

 Peak Number 2 Butanal, 3-methyl- Concentration Rank 4

R.T.	EstConc	Area	Relative to ISTD	R.T.
6.32	5.92 ug/L	181825	1,4-Difluorobenzene	5.66

Hit#	of	Tentative ID	MW	MolForm	CAS#	Qual
1	5	Butanal, 3-methyl-	86	C5H10O	000590-86-3	83
2		Pentanal	86	C5H10O	000110-62-3	78
3		Pentanal	86	C5H10O	000110-62-3	64
4		Pentanal	86	C5H10O	000110-62-3	64
5		1-Octadecanamine, N-methyl-	283	C19H41N	002439-55-6	43



Data Path : Z:\voasrv\HPCHEM1\MSVOA V\Data\VV053019\
 Data File : VV011162.D
 Acq On : 31 May 2019 05:12
 Operator : SY/MD
 Sample : K3017-09RE
 Misc : 2.79G/10ML/MSVOA V/SOIL
 ALS Vial : 1 Sample Multiplier: 1

Instrument :
 MSVOA_V
 ClientSampled :
 A51E2RE

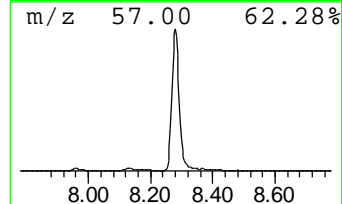
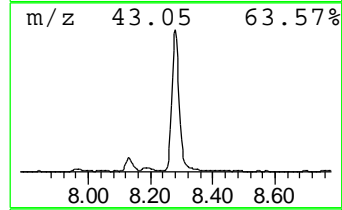
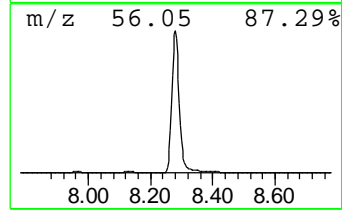
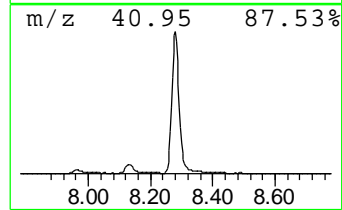
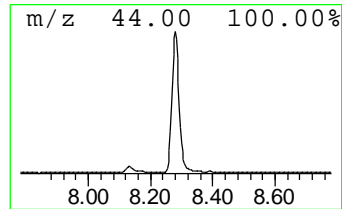
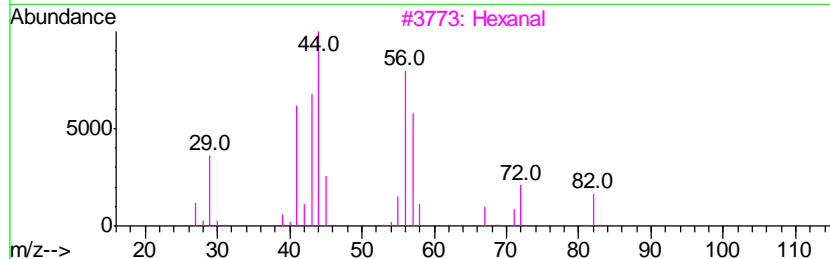
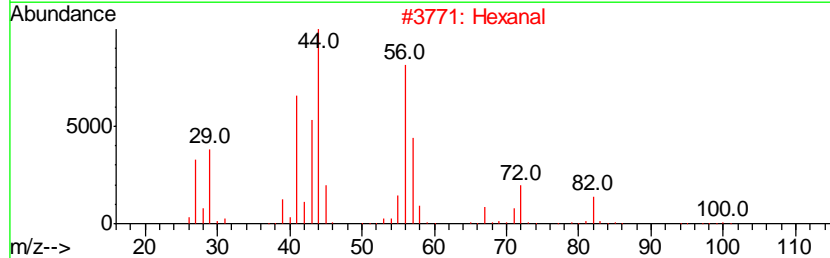
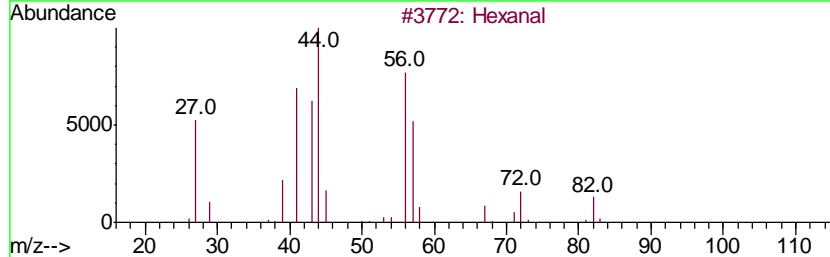
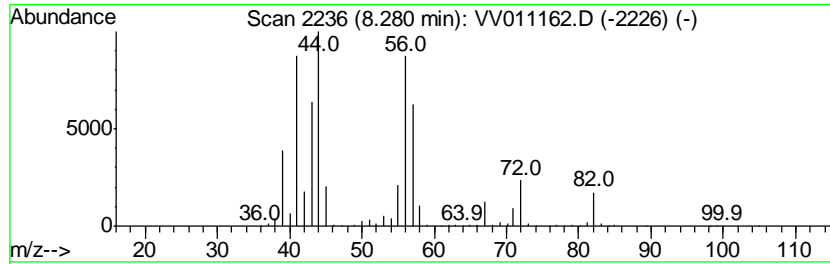
Quant Method : Z:\VOASRV\HPCHEM1\MSVOA_V\METHOD\SOM2VLM053019S.M
 Quant Title : VOC Analysis

TIC Library : C:\DATABASE\NIST11.L
 TIC Integration Parameters: LSCINT.P

 Peak Number 5 Hexanal Concentration Rank 1

R.T.	EstConc	Area	Relative to ISTD	R.T.
8.28	33.82 ug/L	917038	Chlorobenzene-d5	8.89

Hit#	of	Tentative ID	MW	MolForm	CAS#	Qual
1	5	Hexanal	100	C6H12O	000066-25-1	80
2		Hexanal	100	C6H12O	000066-25-1	80
3		Hexanal	100	C6H12O	000066-25-1	80
4		Hexanal	100	C6H12O	000066-25-1	80
5		Cyclobutanol, 2-ethyl-	100	C6H12O	035301-43-0	59



Data Path : Z:\voasrv\HPCHEM1\MSVOA V\Data\VV053019\
 Data File : VV011162.D
 Acq On : 31 May 2019 05:12
 Operator : SY/MD
 Sample : K3017-09RE
 Misc : 2.79G/10ML/MSVOA V/SOIL
 ALS Vial : 1 Sample Multiplier: 1

Instrument :
 MSVOA_V
 ClientSampleID :
 A51E2RE

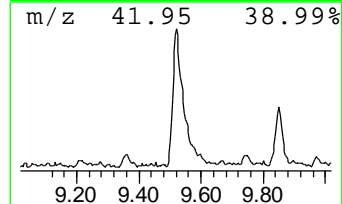
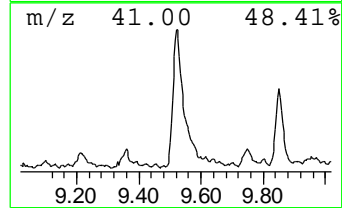
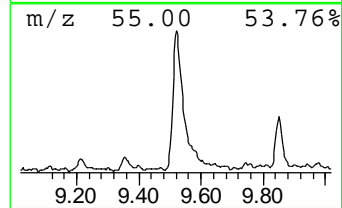
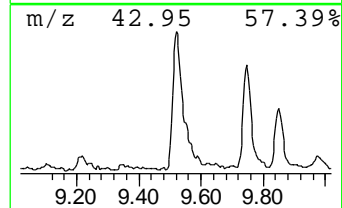
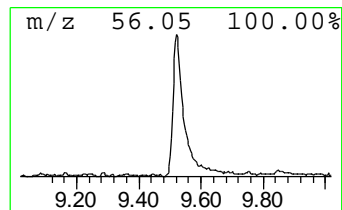
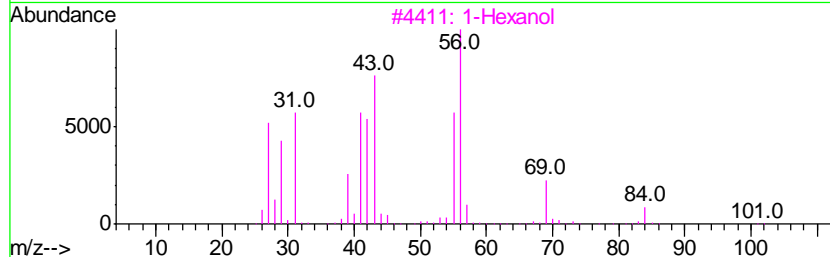
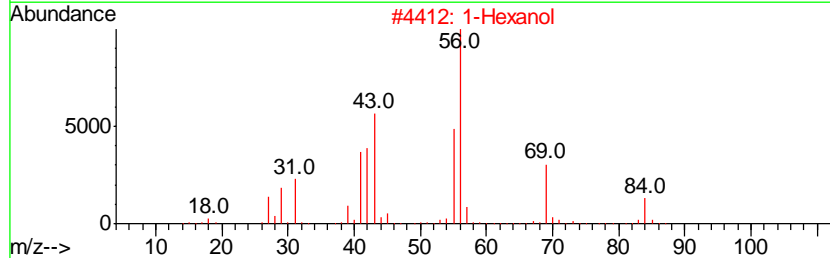
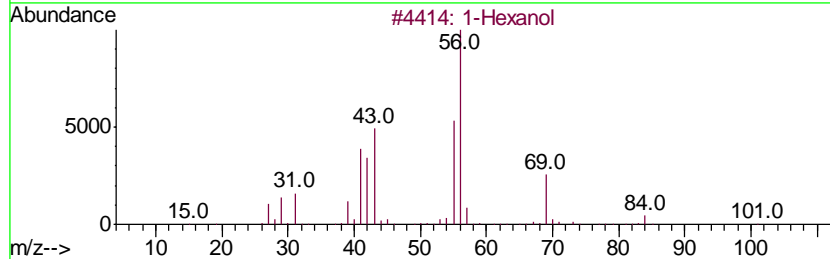
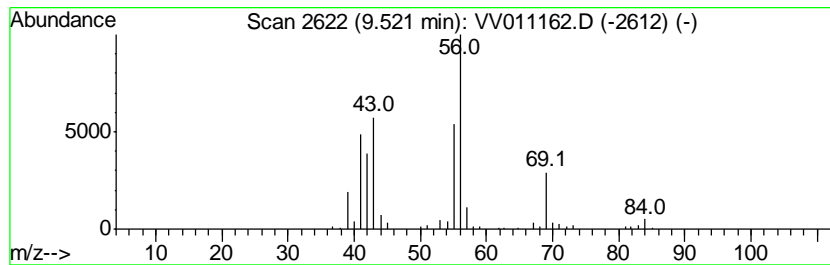
Quant Method : Z:\VOASRV\HPCHEM1\MSVOA_V\METHOD\SOM2VLM053019S.M
 Quant Title : VOC Analysis

TIC Library : C:\DATABASE\NIST11.L
 TIC Integration Parameters: LSCINT.P

 Peak Number 6 1-Hexanol Concentration Rank 5

R.T.	EstConc	Area	Relative to ISTD	R.T.
9.52	4.25 ug/L	115262	Chlorobenzene-d5	8.89

Hit#	of	Tentative ID	MW	MolForm	CAS#	Qual
1	5	1-Hexanol	102	C6H14O	000111-27-3	83
2		1-Hexanol	102	C6H14O	000111-27-3	78
3		1-Hexanol	102	C6H14O	000111-27-3	78
4		1-Hexanol	102	C6H14O	000111-27-3	78
5		Hexyl chloroformate	164	C7H13ClO2	006092-54-2	78



Data Path : Z:\voasrv\HPCHEM1\MSVOA V\Data\VV053019\
 Data File : VV011162.D
 Acq On : 31 May 2019 05:12
 Operator : SY/MD
 Sample : K3017-09RE
 Misc : 2.79G/10ML/MSVOA V/SOIL
 ALS Vial : 1 Sample Multiplier: 1

Instrument :
 MSVOA_V
 ClientSampled :
 A51E2RE

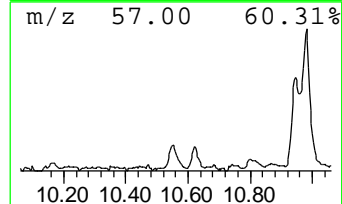
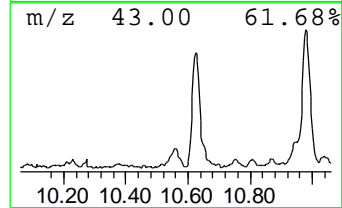
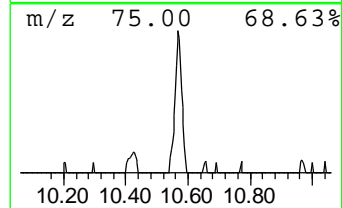
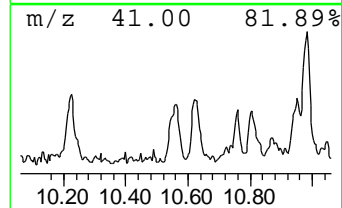
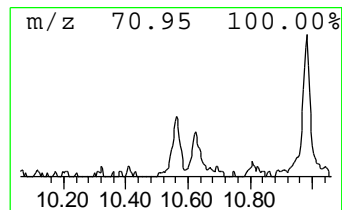
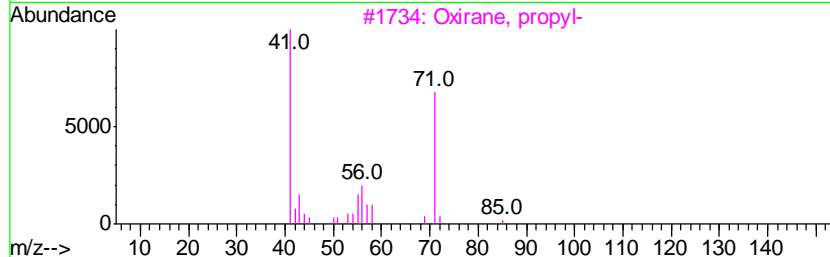
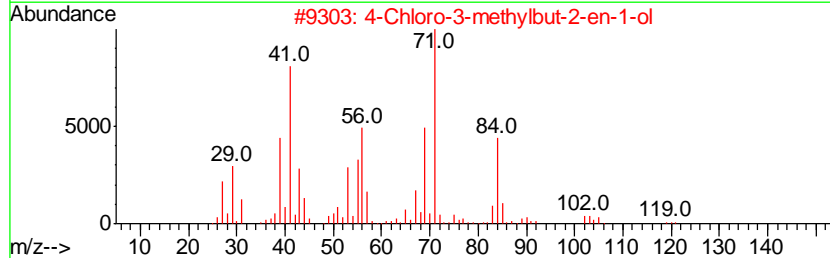
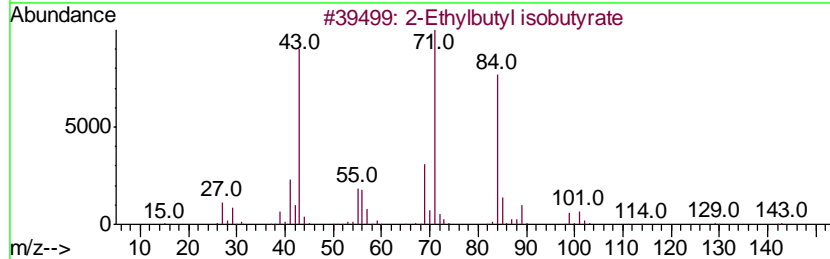
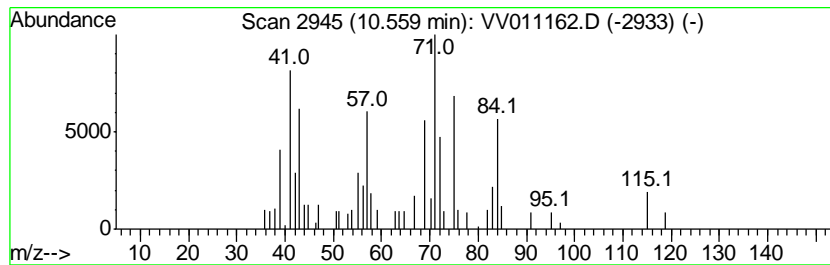
Quant Method : Z:\VOASRV\HPCHEM1\MSVOA_V\METHOD\SOM2VLM053019S.M
 Quant Title : VOC Analysis

TIC Library : C:\DATABASE\NIST11.L
 TIC Integration Parameters: LSCINT.P

 Peak Number 7 unknown-01 Concentration Rank 6

R.T.	EstConc	Area	Relative to ISTD	R.T.
10.56	2.42 ug/L	26044	1,4-Dichlorobenzene-d4	11.29

Hit#	of	Tentative ID	MW	MolForm	CAS#	Qual
1	5	2-Ethylbutyl isobutyrate	172	C10H20O2	074398-54-2	27
2		4-Chloro-3-methylbut-2-en-1-ol	120	C5H9ClO	053170-97-1	25
3		Oxirane, propyl-	86	C5H10O	001003-14-1	22
4		3-Penten-2-one	84	C5H8O	000625-33-2	18
5		3,4,4-Trimethyl-1-penten-3-ol	128	C8H16O	003732-61-4	16



Data Path : Z:\voasrv\HPCHEM1\MSVOA_V\Data\VV053019\
Data File : VV011162.D
Acq On : 31 May 2019 05:12
Operator : SY/MD
Sample : K3017-09RE
Misc : 2.79G/10ML/MSVOA_V/SOIL
ALS Vial : 1 Sample Multiplier: 1

Instrument :
MSVOA_V
ClientSampleId :
A51E2RE

Quant Method : Z:\VOASRV\HPCHEM1\MSVOA_V\METHOD\SOM2VLM053019S.M
Quant Title : VOC Analysis

TIC Library : C:\DATABASE\NIST11.L
TIC Integration Parameters: LSCINT.P

TIC Top Hit name	RT	EstConc	Units	Response	--Internal Standard--			
					#	RT	Resp	Conc
Butanal	3.74	8.8	ug/L	269027	1	5.66	767239	25.0
Butanal, 3-methyl-	6.32	5.9	ug/L	181825	1	5.66	767239	25.0
Hexanal	8.28	33.8	ug/L	917038	2	8.89	677977	25.0
1-Hexanol	9.52	4.3	ug/L	115262	2	8.89	677977	25.0
unknown-01	10.56	2.4	ug/L	26044	3	11.29	268604	25.0