

Data Path : Z:\voasrv\HPCHEM1\MSVOA_V\Data\VW053023\
 Data File : VW031275.D
 Acq On : 30 May 2023 18:25
 Operator : SY/MD
 Sample : 02963-01
 Misc : 25.0mL/MSVOA_V/WATER
 ALS Vial : 12 Sample Multiplier: 1

Instrument :
 MSVOA_V
 ClientSampleId :
 C0P02

Quant Time: May 31 05:30:56 2023
 Quant Method : Z:\voasrv\HPCHEM1\MSVOA_V\Method\SFAMVTR053023WMA.M
 Quant Title : TRACE VOA SFAM1.0
 QLast Update : Wed May 31 05:14:27 2023
 Response via : Initial Calibration

Compound	R.T.	QIon	Response	Conc	Units	Dev(Min)

Internal Standards						
1) 1,4-Difluorobenzene	5.542	114	111810	5.000	ug/L	0.00
28) Chlorobenzene-d5	8.793	117	117009	5.000	ug/L	0.00
58) 1,4-Dichlorobenzene-d4	11.194	152	48541	5.000	ug/L	0.00
System Monitoring Compounds						
4) Vinyl Chloride-d3	1.278	65	49012	5.292	ug/L	0.00
Spiked Amount	5.000	Range 40 - 130	Recovery	=	105.800%	
7) Chloroethane-d5	1.536	69	54349	5.504	ug/L	0.00
Spiked Amount	5.000	Range 65 - 130	Recovery	=	110.000%	
11) 1,1-Dichloroethene-d2	2.063	65	26279	5.435	ug/L	0.00
Spiked Amount	5.000	Range 60 - 125	Recovery	=	108.800%	
20) 2-Butanone-d5	3.825	46	203654	63.651	ug/L	0.01
Spiked Amount	50.000	Range 40 - 130	Recovery	=	127.300%	
24) Chloroform-d	4.259	84	120024	5.396	ug/L	0.00
Spiked Amount	5.000	Range 70 - 125	Recovery	=	108.000%	
26) 1,2-Dichloroethane-d4	4.950	65	70014	5.889	ug/L	0.00
Spiked Amount	5.000	Range 70 - 130	Recovery	=	117.800%	
32) Benzene-d6	4.966	84	213108	5.036	ug/L	0.00
Spiked Amount	5.000	Range 70 - 125	Recovery	=	100.800%	
36) 1,2-Dichloropropane-d6	5.995	67	83451	5.588	ug/L	0.00
Spiked Amount	5.000	Range 60 - 140	Recovery	=	111.800%	
41) Toluene-d8	7.252	98	170232	4.517	ug/L	0.00
Spiked Amount	5.000	Range 70 - 130	Recovery	=	90.400%	
43) trans-1,3-Dichloroprop...	7.561	79	24987	5.119	ug/L	0.00
Spiked Amount	5.000	Range 55 - 130	Recovery	=	102.400%	
46) 2-Hexanone-d5	8.037	63	129855	56.324	ug/L	0.00
Spiked Amount	50.000	Range 45 - 130	Recovery	=	112.640%	
56) 1,1,2,2-Tetrachloroeth...	10.162	84	63281	5.526	ug/L	0.00
Spiked Amount	5.000	Range 65 - 120	Recovery	=	110.600%	
66) 1,2-Dichlorobenzene-d4	11.567	152	62757	6.221	ug/L	0.00
Spiked Amount	5.000	Range 80 - 120	Recovery	=	124.400%#	

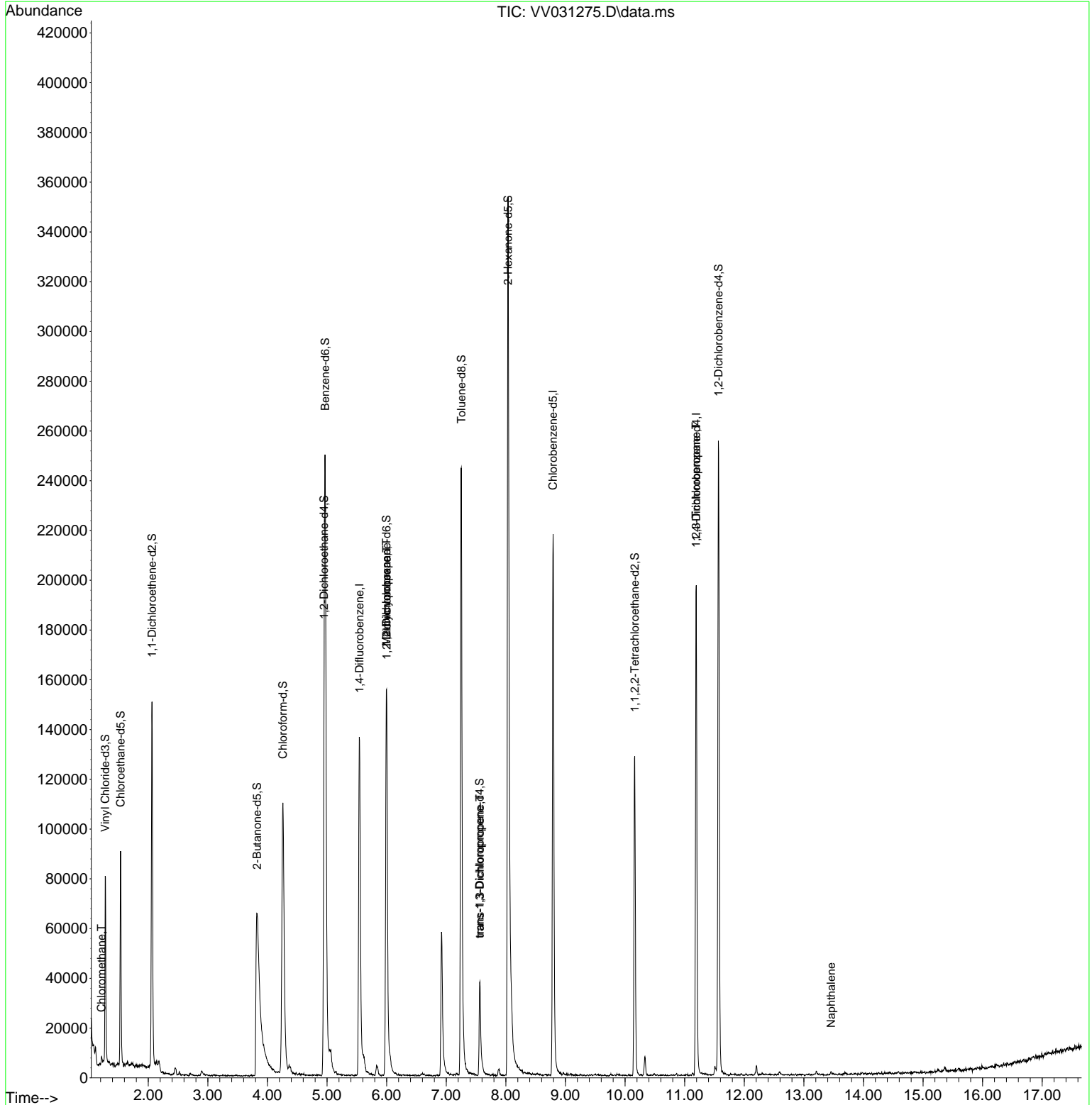
Target Compounds						Qvalue
3) Chloromethane	1.217	50	1966	0.115	ug/L #	82
35) Methylcyclohexane	5.995	83	19103	0.914	ug/L #	14
37) 1,2-Dichloropropane	6.002	63	8818	0.631	ug/L #	89
44) trans-1,3-Dichloropropene	7.564	75	1339	0.087	ug/L	86
61) 1,2,3-Trichloropropane	11.191	75	6656	1.044	ug/L #	63
71) Naphthalene	13.458	128	1112	0.074	ug/L #	78

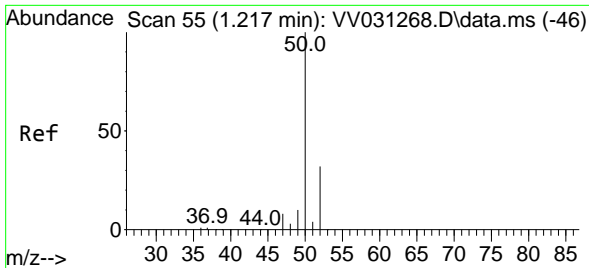
(#) = qualifier out of range (m) = manual integration (+) = signals summed

Data Path : Z:\voasrv\HPCHEM1\MSVOA_V\Data\VV053023\
 Data File : VV031275.D
 Acq On : 30 May 2023 18:25
 Operator : SY/MD
 Sample : 02963-01
 Misc : 25.0mL/MSVOA_V/WATER
 ALS Vial : 12 Sample Multiplier: 1

Instrument :
 MSVOA_V
 ClientSampleId :
 COP02

Quant Time: May 31 05:30:56 2023
 Quant Method : Z:\voasrv\HPCHEM1\MSVOA_V\Method\SFAMVTR053023WMA.M
 Quant Title : TRACE VOA SFAM1.0
 QLast Update : Wed May 31 05:14:27 2023
 Response via : Initial Calibration

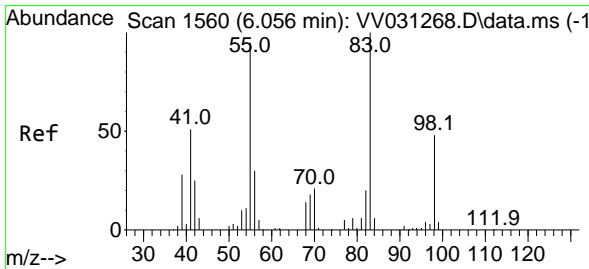
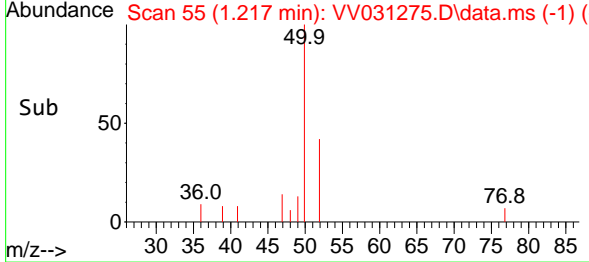
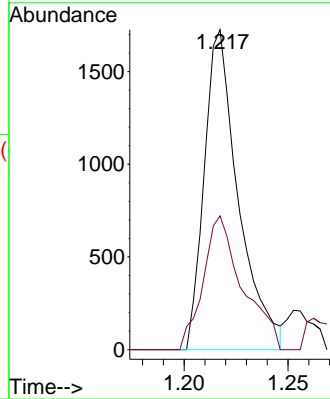
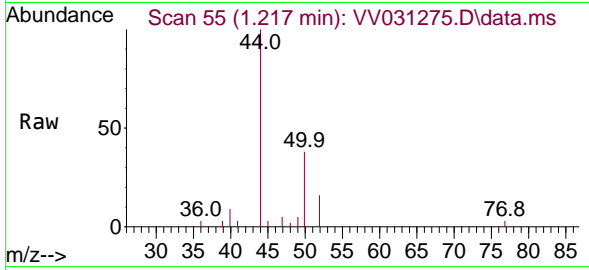




#3
 Chloromethane
 Concen: 0.115 ug/L
 RT: 1.217 min Scan# 51
 Delta R.T. 0.000 min
 Lab File: VV031275.D
 Acq: 30 May 2023 18:25

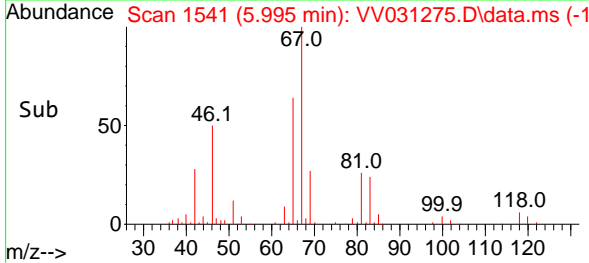
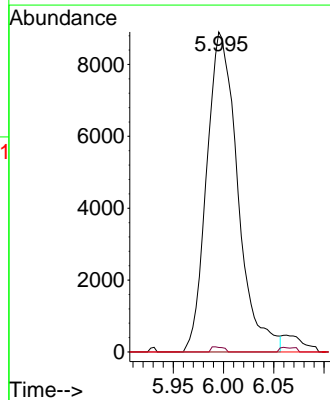
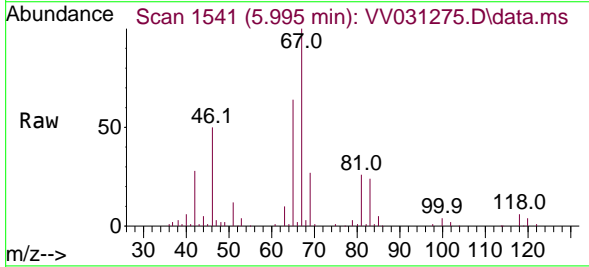
Instrument :
 MSVOA_V
 ClientSampleId :
 COP02

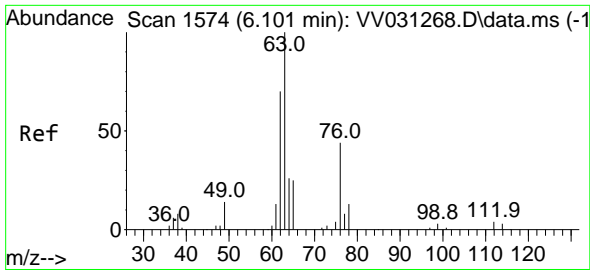
Tgt Ion: 50 Resp: 1966
 Ion Ratio Lower Upper
 50 100
 52 41.8 22.3 41.5#



#35
 Methylcyclohexane
 Concen: 0.914 ug/L
 RT: 5.995 min Scan# 1541
 Delta R.T. -0.061 min
 Lab File: VV031275.D
 Acq: 30 May 2023 18:25

Tgt Ion: 83 Resp: 19103
 Ion Ratio Lower Upper
 83 100
 55 0.6 72.6 108.8#
 98 0.4 35.9 53.9#

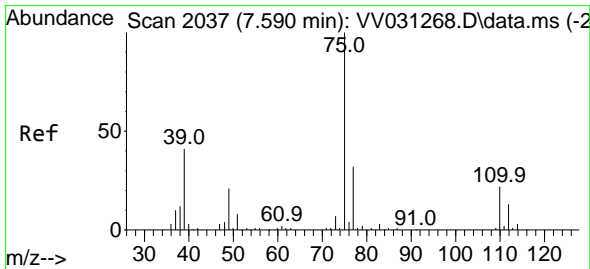
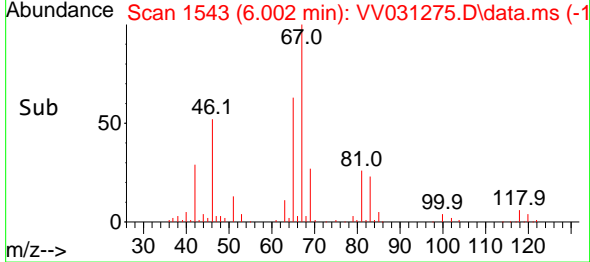
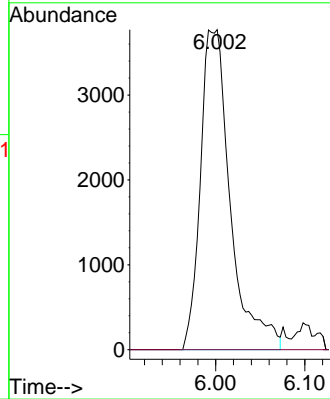
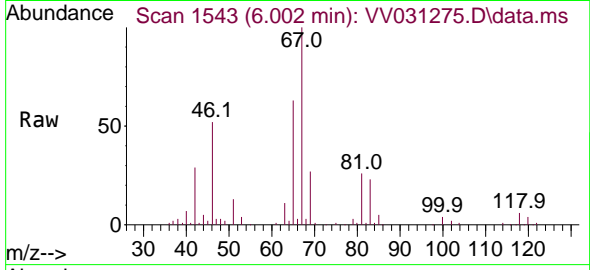




#37
 1,2-Dichloropropane
 Concen: 0.631 ug/L
 RT: 6.002 min Scan# 111
 Delta R.T. -0.100 min
 Lab File: VV031275.D
 Acq: 30 May 2023 18:25

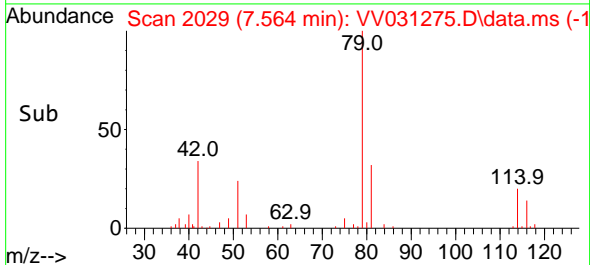
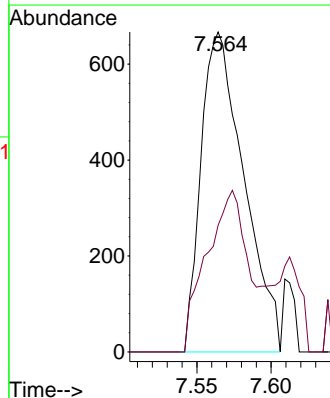
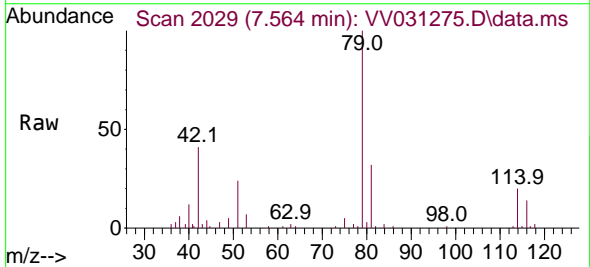
Instrument : MSVOA_V
 ClientSampleId : COP02

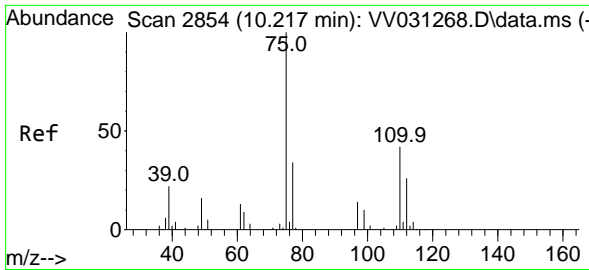
Tgt Ion: 63 Resp: 8818
 Ion Ratio Lower Upper
 63 100
 112 0.2 3.2 4.8#



#44
 trans-1,3-Dichloropropene
 Concen: 0.087 ug/L
 RT: 7.564 min Scan# 2029
 Delta R.T. -0.026 min
 Lab File: VV031275.D
 Acq: 30 May 2023 18:25

Tgt Ion: 75 Resp: 1339
 Ion Ratio Lower Upper
 75 100
 77 39.6 22.4 41.6

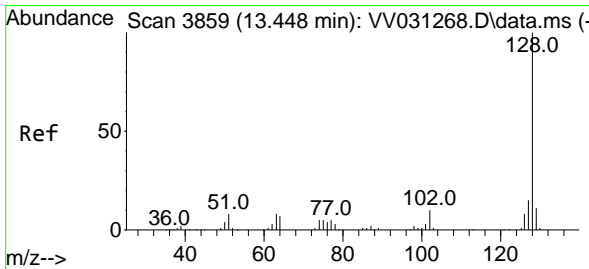
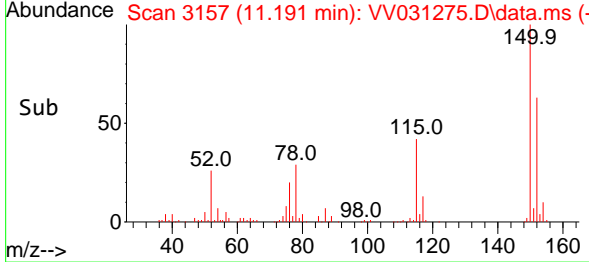
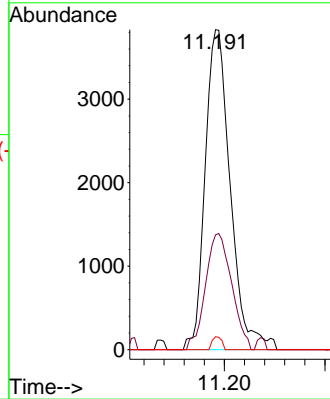
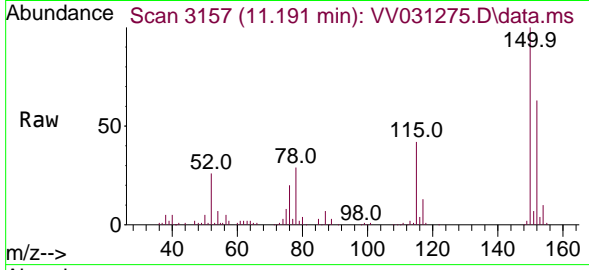




#61
 1,2,3-Trichloropropane
 Concen: 1.044 ug/L
 RT: 11.191 min Scan# 31
 Delta R.T. 0.974 min
 Lab File: VV031275.D
 Acq: 30 May 2023 18:25

Instrument :
 MSVOA_V
 ClientSampleId :
 COP02

Tgt Ion	Resp	Lower	Upper
75	6656		
75	100		
77	37.8	27.0	40.6
110	1.5	31.9	47.9#



#71
 Naphthalene
 Concen: 0.074 ug/L
 RT: 13.458 min Scan# 3862
 Delta R.T. 0.010 min
 Lab File: VV031275.D
 Acq: 30 May 2023 18:25

Tgt Ion	Resp	Lower	Upper
128	1112		
128	100		
129	8.6	8.8	13.2#
127	0.0	11.3	16.9#

