

Data Path : Z:\VOASRV\HPCHEM1\MSVOA V\DATA\VV060320\
 Data File : VV016482.D
 Acq On : 04 Jun 2020 02:03
 Operator : SY/MD
 Sample : L2849-04
 Misc : 5.0mL/MSVOA V/WATER
 ALS Vial : 61 Sample Multiplier: 1

Instrument :
 MSVOA_V
 ClientSampleId :
 ETTQ0

Integration Parameters: LSCINT.P

Integrator: RTE
 Smoothing : OFF
 Sampling : 1
 Start Thrs: 0.2
 Stop Thrs : 0

Filtering: 5
 Min Area: 0 % of largest Peak
 Max Peaks: 100
 Peak Location: TOP

If leading or trailing edge < 100 prefer < Baseline drop else tangent >
 Peak separation: 5

Method : Z:\VOASRV\HPCHEM1\MSVOA_V\METHOD\SOMVLM060320WMA.M
 Title : VOC Analysis

Signal : TIC

peak #	R.T. min	first scan	max scan	last scan	PK TY	peak height	corr. area	corr. % max.	% of total
1	1.316	64	70	83	rVB2	239079	242803	17.17%	2.263%
2	1.566	142	148	161	rVB	137652	159981	11.32%	1.491%
3	2.119	311	320	335	rVB	304649	440235	31.14%	4.103%
4	2.714	502	505	507	rBV3	1217	785	0.06%	0.007%
5	3.013	597	598	602	rBV3	1237	901	0.06%	0.008%
6	3.074	612	617	618	rBV3	1372	1340	0.09%	0.012%
7	3.116	627	630	634	rVB4	2138	1202	0.09%	0.011%
8	3.139	634	637	639	rBV4	1456	866	0.06%	0.008%
9	3.174	646	648	652	rVB4	1051	593	0.04%	0.006%
10	3.377	707	711	713	rVB5	1180	892	0.06%	0.008%
11	3.460	732	737	738	rBV3	1005	743	0.05%	0.007%
12	3.502	746	750	751	rBV3	977	684	0.05%	0.006%
13	3.611	779	784	787	rBV6	904	947	0.07%	0.009%
14	3.669	799	802	805	rBV3	1093	695	0.05%	0.006%
15	3.685	805	807	810	rBV4	1104	604	0.04%	0.006%
16	3.705	810	813	815	rBV4	1263	934	0.07%	0.009%
17	3.856	857	860	861	rBV3	1089	647	0.05%	0.006%
18	3.897	862	873	909	rVV	110822	358283	25.34%	3.339%
19	4.306	996	1000	1004	rBV6	1509	1601	0.11%	0.015%
20	4.373	1004	1021	1044	rVV2	228033	563867	39.88%	5.255%
21	4.582	1085	1086	1089	rBV3	1103	616	0.04%	0.006%
22	4.746	1135	1137	1141	rBV5	840	719	0.05%	0.007%
23	4.840	1163	1166	1170	rBV7	1544	1445	0.10%	0.013%
24	4.913	1183	1189	1191	rBV6	1311	821	0.06%	0.008%
25	4.984	1207	1211	1214	rBV3	960	822	0.06%	0.008%
26	5.071	1221	1238	1260	rBV3	552571	1413796	100.00%	13.177%
27	5.412	1343	1344	1347	rBV3	1123	664	0.05%	0.006%
28	5.473	1359	1363	1365	rBV5	1881	1417	0.10%	0.013%
29	5.640	1398	1415	1444	rBV	433844	873614	61.79%	8.142%
30	6.042	1537	1540	1541	rBV3	1529	937	0.07%	0.009%
31	6.093	1544	1556	1579	rVB	320617	637732	45.11%	5.944%
32	6.531	1688	1692	1694	rBV4	1025	873	0.06%	0.008%
33	6.698	1742	1744	1747	rBV3	1281	807	0.06%	0.008%
34	6.727	1751	1753	1754	rBV	1302	619	0.04%	0.006%

Data Path : Z:\VOASRV\HPCHEM1\MSVOA V\DATA\VV060320\
 Data File : VV016482.D
 Acq On : 04 Jun 2020 02:03
 Operator : SY/MD
 Sample : L2849-04
 Misc : 5.0mL/MSVOA V/WATER
 ALS Vial : 61 Sample Multiplier: 1

Instrument :
 MSVOA_V
 ClientSampleId :
 ETTQ0

Integration Parameters: LSCINT.P

Integrator: RTE
 Smoothing : OFF
 Sampling : 1
 Start Thrs: 0.2
 Stop Thrs : 0

Filtering: 5
 Min Area: 0 % of largest Peak
 Max Peaks: 100
 Peak Location: TOP

If leading or trailing edge < 100 prefer < Baseline drop else tangent >
 Peak separation: 5

Method : Z:\VOASRV\HPCHEM1\MSVOA_V\METHOD\SOMVLM060320WMA.M
 Title : VOC Analysis

35	6.762	1760	1764	1765	rBV4	1630	1256	0.09%	0.012%
36	6.933	1812	1817	1819	rBV3	1251	1269	0.09%	0.012%
37	7.007	1829	1840	1860	rVV	160964	285596	20.20%	2.662%
38	7.338	1931	1943	1959	rBV	647618	1113263	78.74%	10.376%
39	7.576	2015	2017	2019	rBV3	1320	670	0.05%	0.006%
40	7.598	2022	2024	2027	rVB4	1812	935	0.07%	0.009%
41	7.640	2027	2037	2052	rBV	112655	193885	13.71%	1.807%
42	7.724	2060	2063	2066	rBV4	1316	1037	0.07%	0.010%
43	7.801	2084	2087	2089	rBV3	1343	947	0.07%	0.009%
44	7.820	2091	2093	2098	rVB3	2134	1381	0.10%	0.013%
45	7.997	2146	2148	2153	rVB5	1822	1406	0.10%	0.013%
46	8.106	2170	2182	2199	rBV	409375	683554	48.35%	6.371%
47	8.460	2289	2292	2295	rBV5	1184	1045	0.07%	0.010%
48	8.727	2373	2375	2377	rBV2	1173	658	0.05%	0.006%
49	8.785	2389	2393	2399	rBV7	1066	974	0.07%	0.009%
50	8.875	2408	2421	2440	rBV	649215	1051791	74.39%	9.803%
51	9.116	2494	2496	2498	rBV3	1327	588	0.04%	0.005%
52	9.212	2523	2526	2528	rBV4	1490	1164	0.08%	0.011%
53	9.437	2593	2596	2598	rBV3	1206	819	0.06%	0.008%
54	9.492	2610	2613	2614	rBV3	1036	616	0.04%	0.006%
55	9.544	2625	2629	2631	rVV4	1186	863	0.06%	0.008%
56	9.682	2667	2672	2676	rBV6	1360	1507	0.11%	0.014%
57	9.791	2704	2706	2709	rVV3	1048	622	0.04%	0.006%
58	9.900	2735	2740	2743	rBV6	1893	1779	0.13%	0.017%
59	9.923	2743	2747	2749	rBV4	837	628	0.04%	0.006%
60	9.936	2749	2751	2754	rBV3	1309	736	0.05%	0.007%
61	10.016	2775	2776	2779	rVB3	1132	597	0.04%	0.006%
62	10.039	2779	2783	2784	rBV2	1157	644	0.05%	0.006%
63	10.122	2804	2809	2811	rBV4	1173	1038	0.07%	0.010%
64	10.145	2814	2816	2820	rBV3	1364	882	0.06%	0.008%
65	10.238	2833	2845	2859	rBV	421948	654436	46.29%	6.100%
66	10.363	2880	2884	2886	rBV5	1384	816	0.06%	0.008%
67	10.473	2911	2918	2920	rBV7	985	1028	0.07%	0.010%
68	10.521	2931	2933	2935	rBV3	906	591	0.04%	0.006%
69	10.579	2949	2951	2954	rBV4	1534	945	0.07%	0.009%
70	10.656	2973	2975	2980	rVB6	1199	713	0.05%	0.007%
71	11.039	3091	3094	3097	rBV5	1779	1225	0.09%	0.011%

Data Path : Z:\VOASRV\HPCHEM1\MSVOA V\DATA\VV060320\
 Data File : VV016482.D
 Acq On : 04 Jun 2020 02:03
 Operator : SY/MD
 Sample : L2849-04
 Misc : 5.0mL/MSVOA V/WATER
 ALS Vial : 61 Sample Multiplier: 1

Instrument :
 MSVOA_V
 ClientSampleId :
 ETTQ0

Integration Parameters: LSCINT.P

Integrator: RTE
 Smoothing : OFF
 Sampling : 1
 Start Thrs: 0.2
 Stop Thrs : 0

Filtering: 5
 Min Area: 0 % of largest Peak
 Max Peaks: 100
 Peak Location: TOP

If leading or trailing edge < 100 prefer < Baseline drop else tangent >
 Peak separation: 5

Method : Z:\VOASRV\HPCHEM1\MSVOA_V\METHOD\SOMVLM060320WMA.M
 Title : VOC Analysis

72	11.116	3117	3118	3121	rBV2	1321	763	0.05%	0.007%
73	11.270	3155	3166	3186	rBV	632010	958031	67.76%	8.929%
74	11.550	3247	3253	3259	rBV10	2974	4994	0.35%	0.047%
75	11.646	3272	3283	3303	rVB	651571	1013253	71.67%	9.444%
76	11.881	3354	3356	3360	rVB4	1813	761	0.05%	0.007%
77	12.058	3409	3411	3416	rBV6	1554	1340	0.09%	0.012%
78	12.138	3432	3436	3439	rBV5	1421	1081	0.08%	0.010%
79	12.222	3459	3462	3463	rBV2	852	585	0.04%	0.005%
80	12.257	3471	3473	3475	rBV3	1456	692	0.05%	0.006%
81	12.514	3549	3553	3555	rBV2	1201	890	0.06%	0.008%
82	12.617	3583	3585	3587	rBV3	1273	707	0.05%	0.007%
83	12.662	3596	3599	3600	rBV4	1744	949	0.07%	0.009%
84	12.707	3608	3613	3616	rBV6	1360	1477	0.10%	0.014%
85	12.849	3655	3657	3661	rVB4	1954	1109	0.08%	0.010%
86	12.871	3661	3664	3667	rBV5	1078	747	0.05%	0.007%
87	13.000	3701	3704	3706	rBV3	1393	765	0.05%	0.007%
88	13.113	3734	3739	3742	rBV6	1541	1671	0.12%	0.016%
89	13.158	3750	3753	3756	rBV4	817	615	0.04%	0.006%
90	13.199	3762	3766	3770	rBV5	912	853	0.06%	0.008%
91	13.318	3798	3803	3807	rBV7	1983	2375	0.17%	0.022%
92	13.588	3885	3887	3891	rVB4	1400	750	0.05%	0.007%
93	13.807	3952	3955	3959	rBV4	1498	1129	0.08%	0.011%
94	13.823	3959	3960	3966	rVB3	1833	1547	0.11%	0.014%
95	13.913	3986	3988	3991	rBV4	1779	984	0.07%	0.009%
96	14.048	4027	4030	4032	rBV3	1957	1053	0.07%	0.010%
97	14.186	4071	4073	4078	rBV5	1572	1050	0.07%	0.010%
98	14.286	4101	4104	4107	rVB4	1305	690	0.05%	0.006%
99	14.833	4272	4274	4276	rBV3	1135	619	0.04%	0.006%
100	15.254	4403	4405	4413	rBV6	1677	2258	0.16%	0.021%

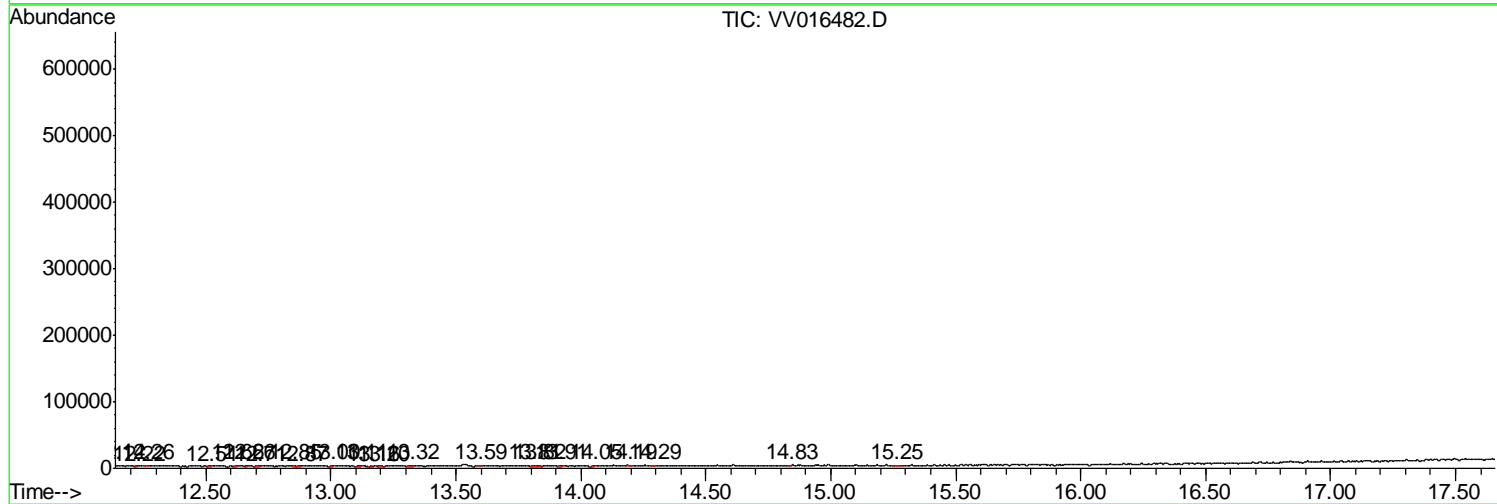
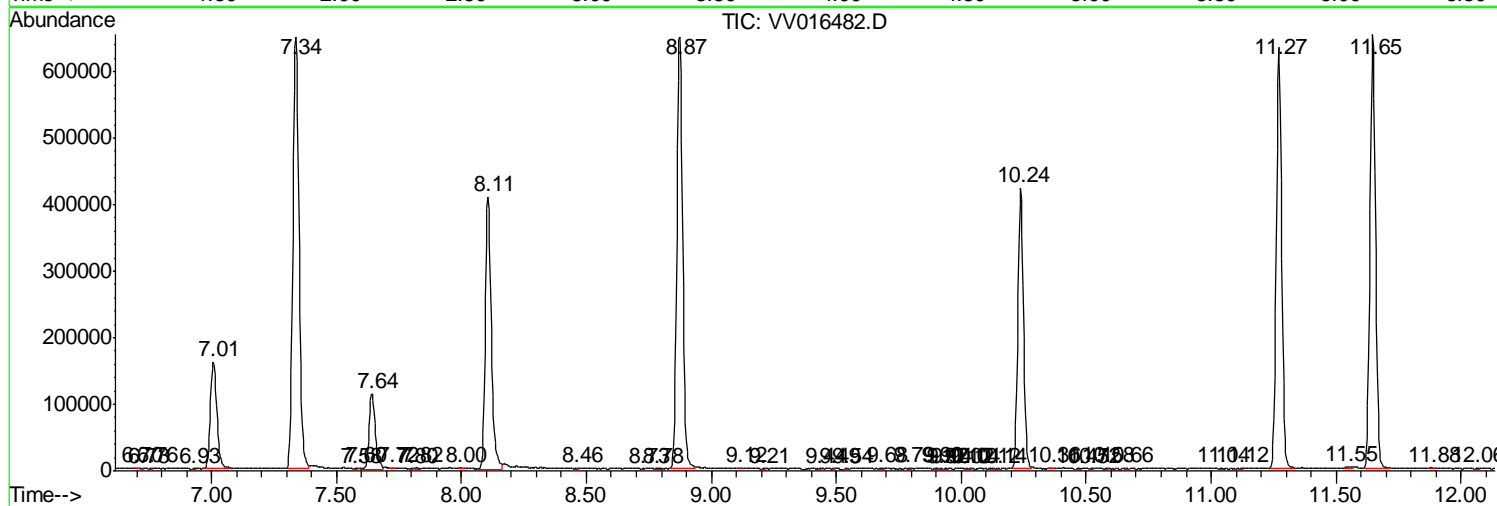
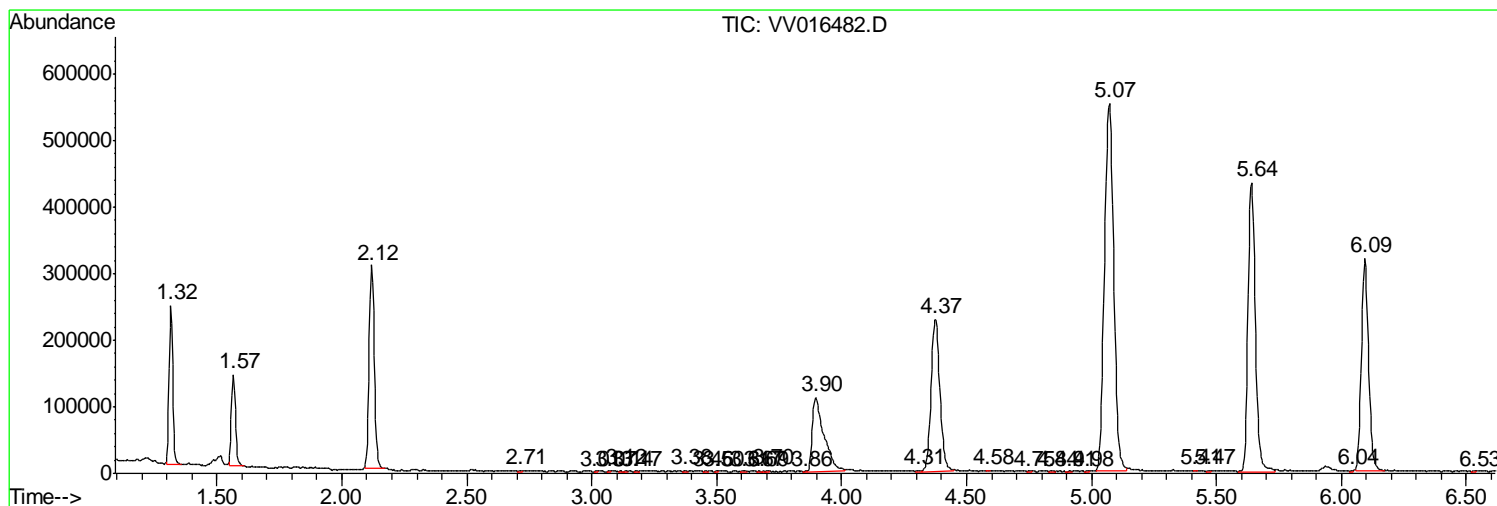
Sum of corrected areas: 10729127

Data Path : Z:\VOASRV\HPCHEM1\MSVOA V\DATA\VV060320\
 Data File : VV016482.D
 Acq On : 04 Jun 2020 02:03
 Operator : SY/MD
 Sample : L2849-04
 Misc : 5.0mL/MSVOA V/WATER
 ALS Vial : 61 Sample Multiplier: 1

Instrument :
 MSVOA_V
 ClientSampled :
 ETTQ0

Quant Method : Z:\VOASRV\HPCHEM1\MSVOA_V\METHOD\SOMVLM060320WMA.M
 Quant Title : VOC Analysis

TIC Library : C:\DATABASE\NIST11.L
 TIC Integration Parameters: LSCINT.P



Data Path : Z:\VOASRV\HPCHEM1\MSVOA_V\DATA\VV060320\
Data File : VV016482.D
Acq On : 04 Jun 2020 02:03
Operator : SY/MD
Sample : L2849-04
Misc : 5.0mL/MSVOA_V/WATER
ALS Vial : 61 Sample Multiplier: 1

Instrument :
MSVOA_V
ClientSampleId :
ETTQ0

Quant Method : Z:\VOASRV\HPCHEM1\MSVOA_V\METHOD\SOMVLM060320WMA.M
Quant Title : VOC Analysis

TIC Library : C:\DATABASE\NIST11.L
TIC Integration Parameters: LSCINT.P

No Library Search Compounds Detected

Data Path : Z:\VOASRV\HPCHEM1\MSVOA_V\DATA\VV060320\
Data File : VV016482.D
Acq On : 04 Jun 2020 02:03
Operator : SY/MD
Sample : L2849-04
Misc : 5.0mL/MSVOA_V/WATER
ALS Vial : 61 Sample Multiplier: 1

Instrument :
MSVOA_V
ClientSampleId :
ETTQ0

Quant Method : Z:\VOASRV\HPCHEM1\MSVOA_V\METHOD\SOMVLM060320WMA.M
Quant Title : VOC Analysis

TIC Library : C:\DATABASE\NIST11.L
TIC Integration Parameters: LSCINT.P

TIC Top Hit name	RT	EstConc	Units	Response	--Internal Standard--			
					#	RT	Resp	Conc
