

Data Path : Z:\voasrv\HPCHEM1\MSVOA_V\Data\VV060324\
 Data File : VV035957.D
 Acq On : 03 Jun 2024 16:49
 Operator : SY/MD
 Sample : P2695-05
 Misc : 5.15g/10.0mL/MSVOA_V/SOIL/A
 ALS Vial : 18 Sample Multiplier: 1

Instrument :
 MSVOA_V
 ClientSampleId :
 A4BJ7

Integration Parameters: LSCINT.P

Integrator: RTE
 Smoothing : OFF
 Sampling : 1
 Start Thrs: 0.2
 Stop Thrs : 0

Filtering: 5
 Min Area: 0 % of largest Peak
 Max Peaks: 100
 Peak Location: TOP

If leading or trailing edge < 100 prefer < Baseline drop else tangent >
 Peak separation: 5

Method : Z:\voasrv\HPCHEM1\MSVOA_V\Method\SFAMVLM053024SMA.M
 Title : VOC Analysis

Signal : TIC: VV035957.D\data.ms

peak #	R.T. min	first scan	max scan	last scan	PK TY	peak height	corr. area	corr. % max.	% of total
1	1.272	66	72	89	rVB	258589	281857	15.88%	2.146%
2	1.526	144	151	164	rVB	230476	273951	15.43%	2.086%
3	2.050	305	314	343	rVB	444872	662318	37.31%	5.042%
4	2.442	426	436	449	rBV2	35843	59441	3.35%	0.453%
5	2.696	507	515	516	rBV4	2223	2024	0.11%	0.015%
6	2.757	532	534	539	rVB2	585	410	0.02%	0.003%
7	2.960	585	597	615	rBV5	7180	16716	0.94%	0.127%
8	3.056	624	627	631	rBV2	456	329	0.02%	0.003%
9	3.105	637	642	647	rBV4	901	1067	0.06%	0.008%
10	3.310	703	706	713	rVB2	359	333	0.02%	0.003%
11	3.346	713	717	722	rBV2	359	388	0.02%	0.003%
12	3.670	815	818	822	rBV2	405	400	0.02%	0.003%
13	3.748	838	842	846	rBV2	264	306	0.02%	0.002%
14	3.783	850	853	858	rVB	373	333	0.02%	0.003%
15	3.838	858	870	905	rBV2	24926	119348	6.72%	0.909%
16	4.166	966	972	975	rBV3	743	887	0.05%	0.007%
17	4.246	980	997	1026	rBV	307186	812744	45.78%	6.188%
18	4.500	1071	1076	1077	rBV4	892	814	0.05%	0.006%
19	4.571	1091	1098	1100	rBV5	1595	1496	0.08%	0.011%
20	4.587	1100	1103	1109	rVB3	924	1027	0.06%	0.008%
21	4.712	1139	1142	1143	rBV	693	380	0.02%	0.003%
22	4.867	1186	1190	1194	rBV2	371	387	0.02%	0.003%
23	4.953	1201	1217	1268	rBV2	682611	1775268	100.00%	13.516%
24	5.220	1298	1300	1303	rVB2	698	381	0.02%	0.003%
25	5.291	1318	1322	1325	rBV5	689	588	0.03%	0.004%
26	5.532	1385	1397	1438	rBV	710077	1505847	84.82%	11.465%
27	5.828	1479	1489	1517	rVB2	25969	62590	3.53%	0.477%
28	5.928	1517	1520	1522	rVB3	663	348	0.02%	0.003%
29	5.985	1522	1538	1570	rBV	415714	885103	49.86%	6.739%
30	6.326	1640	1644	1646	rBV3	766	562	0.03%	0.004%
31	6.378	1656	1660	1667	rVB3	852	822	0.05%	0.006%
32	6.413	1667	1671	1673	rBV2	547	381	0.02%	0.003%
33	6.439	1676	1679	1682	rBV2	832	710	0.04%	0.005%
34	6.567	1713	1719	1721	rVB3	770	754	0.04%	0.006%
35	6.590	1721	1726	1729	rBV3	533	469	0.03%	0.004%
36	6.680	1751	1754	1758	rBV2	543	451	0.03%	0.003%

Data Path : Z:\voasrv\HPCHEM1\MSVOA_V\Data\VW060324\
 Data File : VW035957.D
 Acq On : 03 Jun 2024 16:49
 Operator : SY/MD
 Sample : P2695-05
 Misc : 5.15g/10.0mL/MSVOA_V/SOIL/A
 ALS Vial : 18 Sample Multiplier: 1

Instrument :
 MSVOA_V
 ClientSampleId :
 A4BJ7

Integration Parameters: LSCINT.P

Integrator: RTE
 Smoothing : OFF
 Sampling : 1
 Start Thrs: 0.2
 Stop Thrs : 0

Filtering: 5
 Min Area: 0 % of largest Peak
 Max Peaks: 100
 Peak Location: TOP

If leading or trailing edge < 100 prefer < Baseline drop else tangent >
 Peak separation: 5

Method : Z:\voasrv\HPCHEM1\MSVOA_V\Method\SFAMVLM053024SMA.M
 Title : VOC Analysis

37	6.911	1814	1826	1850	rBV	161238	326246	18.38%	2.484%
38	7.243	1917	1929	1952	rBV	683141	1217598	68.59%	9.270%
39	7.555	2017	2026	2055	rBV	108150	211673	11.92%	1.612%
40	7.757	2088	2089	2093	rVB3	690	372	0.02%	0.003%
41	7.789	2093	2099	2101	rBV3	1448	1363	0.08%	0.010%
42	7.876	2115	2126	2134	rBV2	7991	14662	0.83%	0.112%
43	8.034	2164	2175	2211	rBV	124654	303313	17.09%	2.309%
44	8.516	2321	2325	2328	rBV2	493	423	0.02%	0.003%
45	8.699	2379	2382	2385	rBV3	416	323	0.02%	0.002%
46	8.783	2396	2408	2444	rBV	1024307	1686803	95.02%	12.842%
47	9.011	2475	2479	2480	rBV4	1386	1067	0.06%	0.008%
48	9.085	2497	2502	2503	rBV4	1650	1504	0.08%	0.011%
49	9.207	2538	2540	2546	rVB4	684	686	0.04%	0.005%
50	9.233	2546	2548	2551	rBV4	488	326	0.02%	0.002%
51	9.275	2558	2561	2565	rVB2	397	333	0.02%	0.003%
52	9.439	2610	2612	2618	rVB3	498	323	0.02%	0.002%
53	9.490	2618	2628	2636	rBV5	1973	4015	0.23%	0.031%
54	9.744	2704	2707	2710	rBV4	471	317	0.02%	0.002%
55	9.837	2727	2736	2743	rBV3	10182	15917	0.90%	0.121%
56	9.931	2762	2765	2770	rBV2	434	402	0.02%	0.003%
57	10.005	2784	2788	2790	rBV	412	307	0.02%	0.002%
58	10.062	2799	2806	2814	rVB7	2012	2796	0.16%	0.021%
59	10.152	2819	2834	2860	rBV	306901	499068	28.11%	3.800%
60	10.246	2860	2863	2866	rVV5	766	416	0.02%	0.003%
61	10.326	2877	2888	2902	rVB2	37920	62640	3.53%	0.477%
62	10.474	2929	2934	2936	rBV4	1023	866	0.05%	0.007%
63	10.570	2961	2964	2969	rBV2	361	391	0.02%	0.003%
64	10.670	2993	2995	3003	rVB5	637	700	0.04%	0.005%
65	10.706	3003	3006	3011	rBV2	563	524	0.03%	0.004%
66	10.773	3020	3027	3033	rBV6	861	1046	0.06%	0.008%
67	10.853	3045	3052	3067	rVB8	3967	7655	0.43%	0.058%
68	10.927	3072	3075	3077	rBV2	500	341	0.02%	0.003%
69	10.969	3083	3088	3097	rVB6	1377	1868	0.11%	0.014%
70	11.082	3115	3123	3132	rBV4	4747	8186	0.46%	0.062%
71	11.127	3133	3137	3144	rVB7	3297	3896	0.22%	0.030%
72	11.185	3144	3155	3174	rBV	785558	1250561	70.44%	9.521%
73	11.493	3241	3251	3260	rBV4	13194	28479	1.60%	0.217%
74	11.558	3261	3271	3300	rVB	566774	922765	51.98%	7.025%
75	11.728	3317	3324	3330	rVB9	2937	4812	0.27%	0.037%
76	11.776	3335	3339	3340	rBV2	2425	1655	0.09%	0.013%

Data Path : Z:\voasrv\HPCHEM1\MSVOA_V\Data\VV060324\
 Data File : VV035957.D
 Acq On : 03 Jun 2024 16:49
 Operator : SY/MD
 Sample : P2695-05
 Misc : 5.15g/10.0mL/MSVOA_V/SOIL/A
 ALS Vial : 18 Sample Multiplier: 1

Instrument :
 MSVOA_V
 ClientSampleId :
 A4BJ7

Integration Parameters: LSCINT.P

Integrator: RTE
 Smoothing : OFF Filtering: 5
 Sampling : 1 Min Area: 0 % of largest Peak
 Start Thrs: 0.2 Max Peaks: 100
 Stop Thrs : 0 Peak Location: TOP

If leading or trailing edge < 100 prefer < Baseline drop else tangent >
 Peak separation: 5

Method : Z:\voasrv\HPCHEM1\MSVOA_V\Method\SFAMVLM053024SMA.M
 Title : VOC Analysis

77	11.892	3373	3375	3377	rBV2	730	344	0.02%	0.003%
78	11.924	3377	3385	3388	rBV5	1586	2069	0.12%	0.016%
79	12.194	3459	3469	3481	rVB2	12726	20659	1.16%	0.157%
80	12.265	3487	3491	3493	rBV3	542	325	0.02%	0.002%
81	12.297	3494	3501	3513	rBV9	4710	9942	0.56%	0.076%
82	12.435	3541	3544	3550	rVB6	912	951	0.05%	0.007%
83	12.532	3572	3574	3577	rBV4	632	329	0.02%	0.003%
84	12.619	3583	3601	3615	rBV7	8924	19570	1.10%	0.149%
85	12.693	3622	3624	3630	rVB5	547	434	0.02%	0.003%
86	12.824	3661	3665	3668	rBV4	1954	1822	0.10%	0.014%
87	12.921	3691	3695	3698	rBV3	357	330	0.02%	0.003%
88	13.069	3735	3741	3745	rBV5	626	908	0.05%	0.007%
89	13.210	3780	3785	3791	rBV5	1318	1736	0.10%	0.013%
90	13.403	3842	3845	3851	rVB4	838	648	0.04%	0.005%
91	13.467	3858	3865	3875	rBV8	3466	5551	0.31%	0.042%
92	13.654	3921	3923	3927	rBV4	450	303	0.02%	0.002%
93	13.683	3927	3932	3942	rVV7	2393	3798	0.21%	0.029%
94	13.734	3946	3948	3952	rVB	549	314	0.02%	0.002%
95	13.757	3952	3955	3958	rBV4	500	332	0.02%	0.003%
96	13.831	3974	3978	3980	rBV2	564	362	0.02%	0.003%
97	13.937	4007	4011	4013	rBV3	595	421	0.02%	0.003%
98	13.985	4019	4026	4035	rVB2	3058	4895	0.28%	0.037%
99	14.345	4134	4138	4139	rBV3	828	598	0.03%	0.005%
100	14.374	4145	4147	4150	rBV2	649	328	0.02%	0.002%

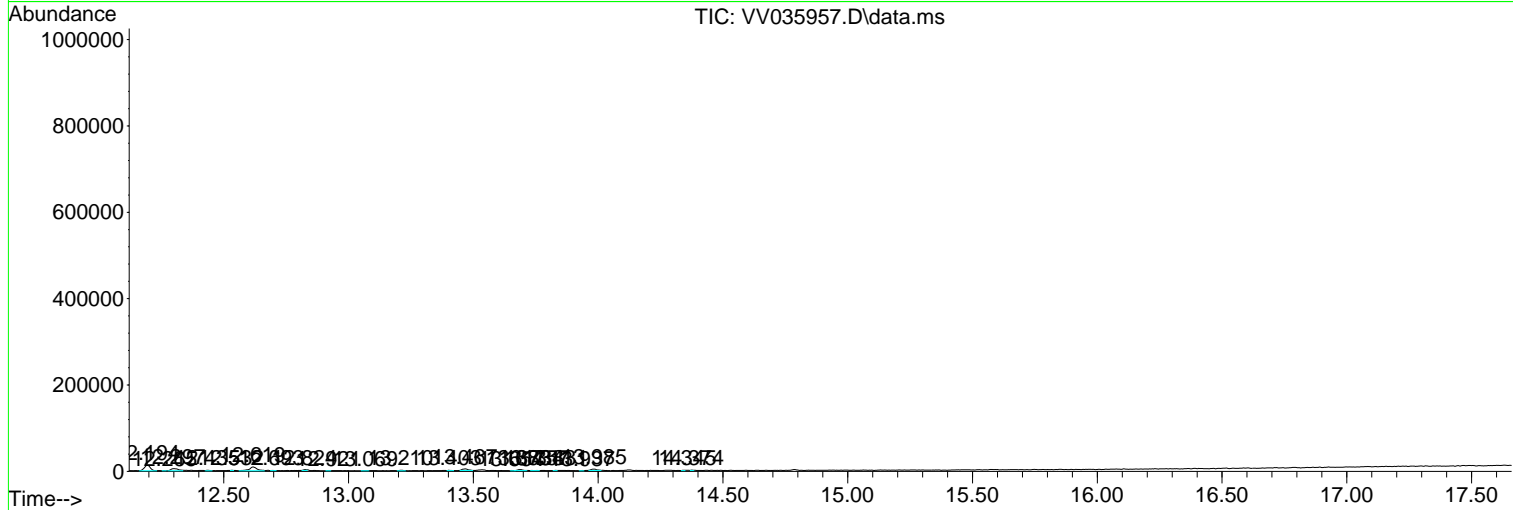
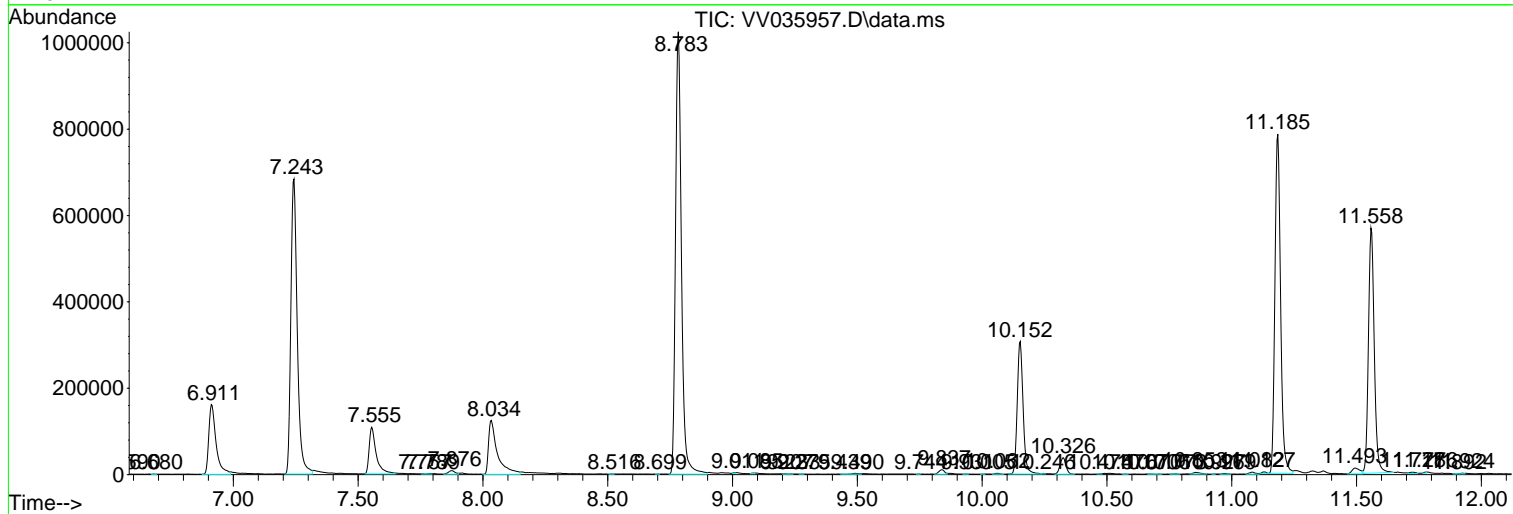
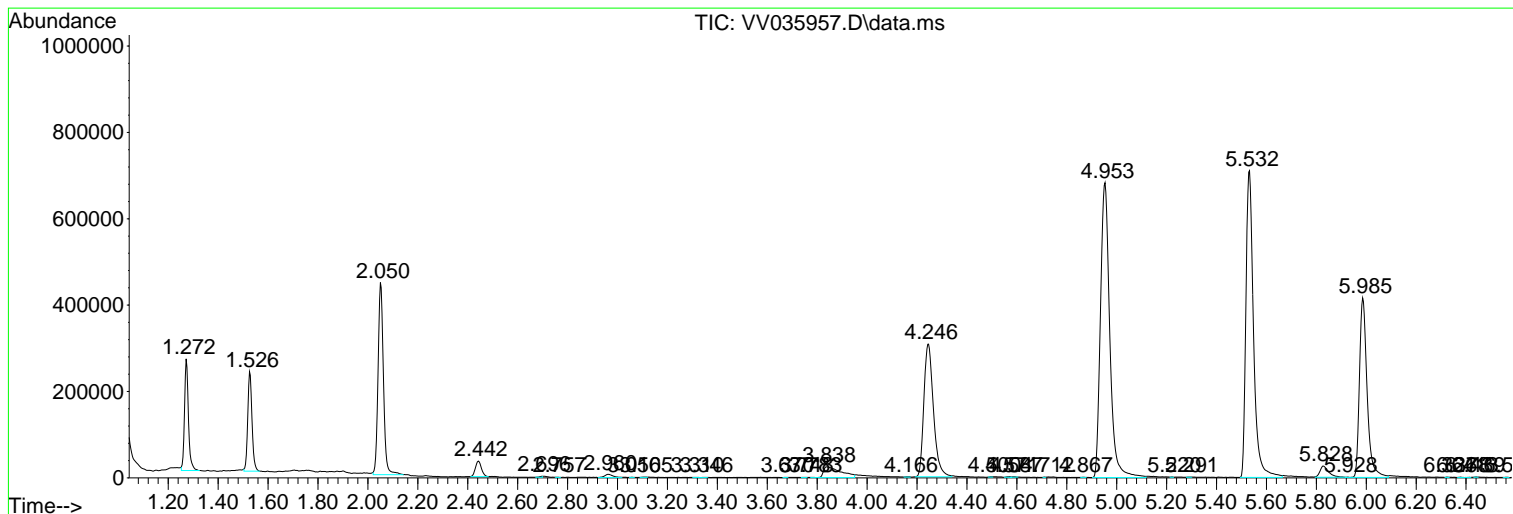
Sum of corrected areas: 13134837

Data Path : Z:\voasrv\HPCHEM1\MSVOA_V\Data\VV060324\
Data File : VV035957.D
Acq On : 03 Jun 2024 16:49
Operator : SY/MD
Sample : P2695-05
Misc : 5.15g/10.0mL/MSVOA_V/SOIL/A
ALS Vial : 18 Sample Multiplier: 1

Instrument :
MSVOA_V
ClientSampleId :
A4BJ7

Quant Method : Z:\voasrv\HPCHEM1\MSVOA_V\Method\SFAMVLM053024SMA.M
Quant Title : VOC Analysis

TIC Library : C:\Database\NIST20.L
TIC Integration Parameters: LSCINT.P



Library Search Compound Report

Data Path : Z:\voasrv\HPCHEM1\MSVOA_V\Data\VW060324\
Data File : VW035957.D
Acq On : 03 Jun 2024 16:49
Operator : SY/MD
Sample : P2695-05
Misc : 5.15g/10.0mL/MSVOA_V/SOIL/A
ALS Vial : 18 Sample Multiplier: 1

Instrument :
MSVOA_V
ClientSampleId :
A4BJ7

Quant Method : Z:\voasrv\HPCHEM1\MSVOA_V\Method\SFAMVLM053024SMA.M
Quant Title : VOC Analysis

TIC Library : C:\Database\NIST20.L
TIC Integration Parameters: LSCINT.P

No Library Search Compounds Detected

Data Path : Z:\voasrv\HPCHEM1\MSVOA_V\Data\VV060324\
Data File : VV035957.D
Acq On : 03 Jun 2024 16:49
Operator : SY/MD
Sample : P2695-05
Misc : 5.15g/10.0mL/MSVOA_V/SOIL/A
ALS Vial : 18 Sample Multiplier: 1

Instrument :
MSVOA_V
ClientSampleId :
A4BJ7

Quant Method : Z:\voasrv\HPCHEM1\MSVOA_V\Method\SFAMVLM053024SMA.M
Quant Title : VOC Analysis

TIC Library : C:\Database\NIST0.L
TIC Integration Parameters: LSCINT.P

TIC Top Hit name	RT	EstConc	Units	Response	--Internal Standard--			
					#	RT	Resp	Conc
