

Data Path : Z:\voasrv\HPCHEM1\MSVOA_V\Data\VV060421\
 Data File : VV021496.D
 Acq On : 04 Jun 2021 10:46
 Operator : SY/MD
 Sample : M2605-04DL 100X
 Misc : 5.0mL/MSVOA_V/WATER
 ALS Vial : 5 Sample Multiplier: 1

Instrument :
 MSVOA_V
 ClientSampleId :
 BG7KODL

Integration Parameters: LSCINT.P

Integrator: RTE
 Smoothing : OFF Filtering: 5
 Sampling : 1 Min Area: 0 % of largest Peak
 Start Thrs: 0.2 Max Peaks: 100
 Stop Thrs : 0 Peak Location: TOP

If leading or trailing edge < 100 prefer < Baseline drop else tangent >
 Peak separation: 5

Method : Z:\voasrv\HPCHEM1\MSVOA_V\Method\SFAMVLM052721WMA.M
 Title : VOC Analysis

Signal : TIC: VV021496.D\data.ms

peak #	R.T. min	first scan	max scan	last scan	PK TY	peak height	corr. area	corr. % max.	% of total
1	1.304	76	82	95	rVB	186758	191737	10.89%	1.282%
2	1.568	157	164	178	rVB	166384	184217	10.46%	1.232%
3	2.108	322	332	364	rVB	333781	503191	28.58%	3.365%
4	2.487	448	450	451	rBV	856	327	0.02%	0.002%
5	2.683	509	511	513	rBV	441	225	0.01%	0.002%
6	2.732	523	526	529	rBV	378	226	0.01%	0.002%
7	2.751	529	532	533	rBV2	393	217	0.01%	0.001%
8	2.876	567	571	574	rBV2	348	279	0.02%	0.002%
9	2.931	584	588	591	rBV2	357	309	0.02%	0.002%
10	3.047	618	624	630	rVB7	917	1435	0.08%	0.010%
11	3.217	673	677	681	rBV2	336	338	0.02%	0.002%
12	3.262	687	691	692	rBV2	304	224	0.01%	0.001%
13	3.317	702	708	711	rBV3	369	374	0.02%	0.003%
14	3.375	723	726	727	rBV	242	140	0.01%	0.001%
15	3.500	763	765	769	rVB2	283	144	0.01%	0.001%
16	3.587	789	792	793	rBV2	350	209	0.01%	0.001%
17	3.626	800	804	807	rVV3	380	265	0.02%	0.002%
18	3.645	807	810	811	rVV	254	135	0.01%	0.001%
19	3.661	812	815	819	rVB3	399	290	0.02%	0.002%
20	3.690	821	824	830	rBV4	313	350	0.02%	0.002%
21	3.761	843	846	849	rVV3	432	325	0.02%	0.002%
22	3.773	849	850	853	rVV	424	156	0.01%	0.001%
23	3.793	853	856	857	rVV	441	192	0.01%	0.001%
24	3.896	871	888	929	rBV	123703	432423	24.56%	2.891%
25	4.352	1015	1030	1059	rBV	258092	639655	36.34%	4.277%
26	4.725	1144	1146	1149	rBV2	425	289	0.02%	0.002%
27	4.767	1158	1159	1164	rVB3	391	252	0.01%	0.002%
28	4.793	1164	1167	1169	rBV3	285	180	0.01%	0.001%
29	4.847	1181	1184	1185	rBV2	378	244	0.01%	0.002%
30	4.889	1194	1197	1201	rBV2	418	201	0.01%	0.001%
31	4.921	1204	1207	1208	rBV	434	208	0.01%	0.001%
32	5.050	1227	1247	1285	rBV2	640314	1631587	92.68%	10.910%
33	5.461	1372	1375	1377	rBV2	282	145	0.01%	0.001%
34	5.478	1377	1380	1382	rBV3	423	296	0.02%	0.002%
35	5.571	1407	1409	1411	rBV	439	245	0.01%	0.002%
36	5.619	1412	1424	1452	rBV	523748	1044390	59.33%	6.984%

Data Path : Z:\voasrv\HPCHEM1\MSVOA_V\Data\VV060421\
 Data File : VV021496.D
 Acq On : 04 Jun 2021 10:46
 Operator : SY/MD
 Sample : M2605-04DL 100X
 Misc : 5.0mL/MSVOA_V/WATER
 ALS Vial : 5 Sample Multiplier: 1

Instrument :
 MSVOA_V
 ClientSampleId :
 BG7KODL

Integration Parameters: LSCINT.P

Integrator: RTE
 Smoothing : OFF
 Sampling : 1
 Start Thrs : 0.2
 Stop Thrs : 0

Filtering: 5
 Min Area: 0 % of largest Peak
 Max Peaks: 100
 Peak Location: TOP

If leading or trailing edge < 100 prefer < Baseline drop else tangent >
 Peak separation: 5

Method : Z:\voasrv\HPCHEM1\MSVOA_V\Method\SFAMVLM052721WMA.M
 Title : VOC Analysis

37	5.912	1504	1515	1535	rBV4	13319	29992	1.70%	0.201%
38	6.072	1551	1565	1593	rBV	359774	731979	41.58%	4.895%
39	6.304	1635	1637	1638	rBV	261	135	0.01%	0.001%
40	6.404	1666	1668	1672	rVV	428	267	0.02%	0.002%
41	6.429	1672	1676	1678	rVV2	315	178	0.01%	0.001%
42	6.635	1735	1740	1741	rBV3	1116	944	0.05%	0.006%
43	6.751	1774	1776	1778	rBV2	369	185	0.01%	0.001%
44	6.825	1795	1799	1801	rBV3	396	321	0.02%	0.002%
45	6.902	1820	1823	1826	rBV	235	153	0.01%	0.001%
46	6.934	1831	1833	1838	rBV2	341	295	0.02%	0.002%
47	6.989	1838	1850	1873	rBV	224633	407429	23.14%	2.724%
48	7.178	1905	1909	1911	rBV3	1081	859	0.05%	0.006%
49	7.317	1939	1952	1970	rBV	792668	1378570	78.31%	9.218%
50	7.625	2037	2048	2081	rBV	153296	274049	15.57%	1.832%
51	7.899	2131	2133	2139	rVB2	325	259	0.01%	0.002%
52	7.934	2139	2144	2145	rBV3	558	368	0.02%	0.002%
53	7.976	2145	2157	2182	rBV	1048856	1760400	100.00%	11.771%
54	8.092	2183	2193	2229	rVV	469531	860396	48.88%	5.753%
55	8.465	2307	2309	2312	rBV3	277	150	0.01%	0.001%
56	8.590	2341	2348	2350	rBV2	356	370	0.02%	0.002%
57	8.654	2366	2368	2372	rVV	251	179	0.01%	0.001%
58	8.677	2372	2375	2379	rVB2	366	257	0.01%	0.002%
59	8.706	2379	2384	2385	rBV	226	134	0.01%	0.001%
60	8.854	2417	2430	2460	rBV	767748	1254023	71.24%	8.385%
61	9.066	2493	2496	2497	rVB2	488	262	0.01%	0.002%
62	9.079	2497	2500	2503	rBV3	380	281	0.02%	0.002%
63	9.149	2515	2522	2532	rBV6	1132	2125	0.12%	0.014%
64	9.204	2537	2539	2541	rBV	400	170	0.01%	0.001%
65	9.256	2553	2555	2558	rBV	407	148	0.01%	0.001%
66	9.310	2569	2572	2576	rBV2	355	242	0.01%	0.002%
67	9.333	2576	2579	2581	rBV	387	238	0.01%	0.002%
68	9.413	2600	2604	2607	rBV2	326	290	0.02%	0.002%
69	9.532	2639	2641	2644	rBV2	199	152	0.01%	0.001%
70	9.548	2644	2646	2648	rBV2	476	263	0.01%	0.002%
71	9.603	2659	2663	2667	rVB2	282	183	0.01%	0.001%
72	9.664	2679	2682	2684	rBV2	451	225	0.01%	0.002%
73	9.709	2692	2696	2698	rBV2	296	219	0.01%	0.001%
74	9.764	2710	2713	2717	rVV3	343	247	0.01%	0.002%
75	9.799	2721	2724	2728	rVV	380	230	0.01%	0.002%
76	9.918	2757	2761	2763	rBV	208	152	0.01%	0.001%

Data Path : Z:\voasrv\HPCHEM1\MSVOA_V\Data\VV060421\
 Data File : VV021496.D
 Acq On : 04 Jun 2021 10:46
 Operator : SY/MD
 Sample : M2605-04DL 100X
 Misc : 5.0mL/MSVOA_V/WATER
 ALS Vial : 5 Sample Multiplier: 1

Instrument :
 MSVOA_V
 ClientSampleId :
 BG7K0DL

Integration Parameters: LSCINT.P

Integrator: RTE
 Smoothing : OFF Filtering: 5
 Sampling : 1 Min Area: 0 % of largest Peak
 Start Thrs: 0.2 Max Peaks: 100
 Stop Thrs : 0 Peak Location: TOP

If leading or trailing edge < 100 prefer < Baseline drop else tangent >
 Peak separation: 5

Method : Z:\voasrv\HPCHEM1\MSVOA_V\Method\SFAMVLM052721WMA.M
 Title : VOC Analysis

77	9.940	2766	2768	2773	rVB3	348	273	0.02%	0.002%
78	9.998	2783	2786	2788	rBV2	245	152	0.01%	0.001%
79	10.011	2788	2790	2795	rVB2	323	249	0.01%	0.002%
80	10.046	2799	2801	2803	rBV	303	157	0.01%	0.001%
81	10.092	2808	2815	2818	rBV2	167	240	0.01%	0.002%
82	10.130	2818	2827	2837	rBV3	3629	5306	0.30%	0.035%
83	10.217	2842	2854	2875	rBV	555634	864339	49.10%	5.780%
84	10.538	2950	2954	2957	rBV3	536	503	0.03%	0.003%
85	10.635	2981	2984	2988	rBV2	223	170	0.01%	0.001%
86	10.661	2990	2992	2999	rVB2	695	540	0.03%	0.004%
87	10.918	3067	3072	3083	rVB4	4166	5796	0.33%	0.039%
88	11.030	3104	3107	3109	rBV3	720	404	0.02%	0.003%
89	11.149	3134	3144	3152	rBV4	2297	3112	0.18%	0.021%
90	11.249	3164	3175	3199	rBV	887515	1365154	77.55%	9.128%
91	11.522	3256	3260	3262	rBV2	292	201	0.01%	0.001%
92	11.625	3280	3292	3315	rBV	876256	1363177	77.44%	9.115%
93	12.021	3412	3415	3421	rBV4	485	496	0.03%	0.003%
94	12.284	3495	3497	3498	rBV	354	158	0.01%	0.001%
95	12.378	3522	3526	3530	rBV4	538	525	0.03%	0.004%
96	12.410	3534	3536	3539	rBV	253	186	0.01%	0.001%
97	12.538	3574	3576	3582	rBV2	283	244	0.01%	0.002%
98	12.580	3586	3589	3592	rBV2	415	356	0.02%	0.002%
99	12.696	3623	3625	3628	rVB2	436	220	0.01%	0.001%
100	12.715	3629	3631	3635	rVV3	425	276	0.02%	0.002%

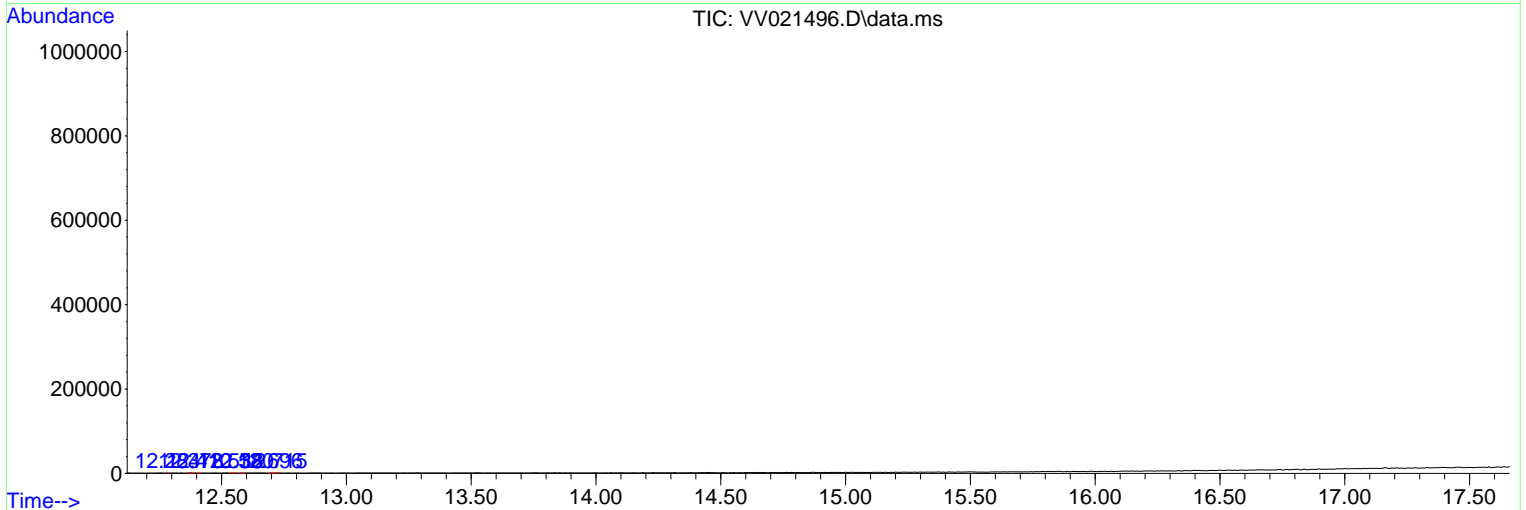
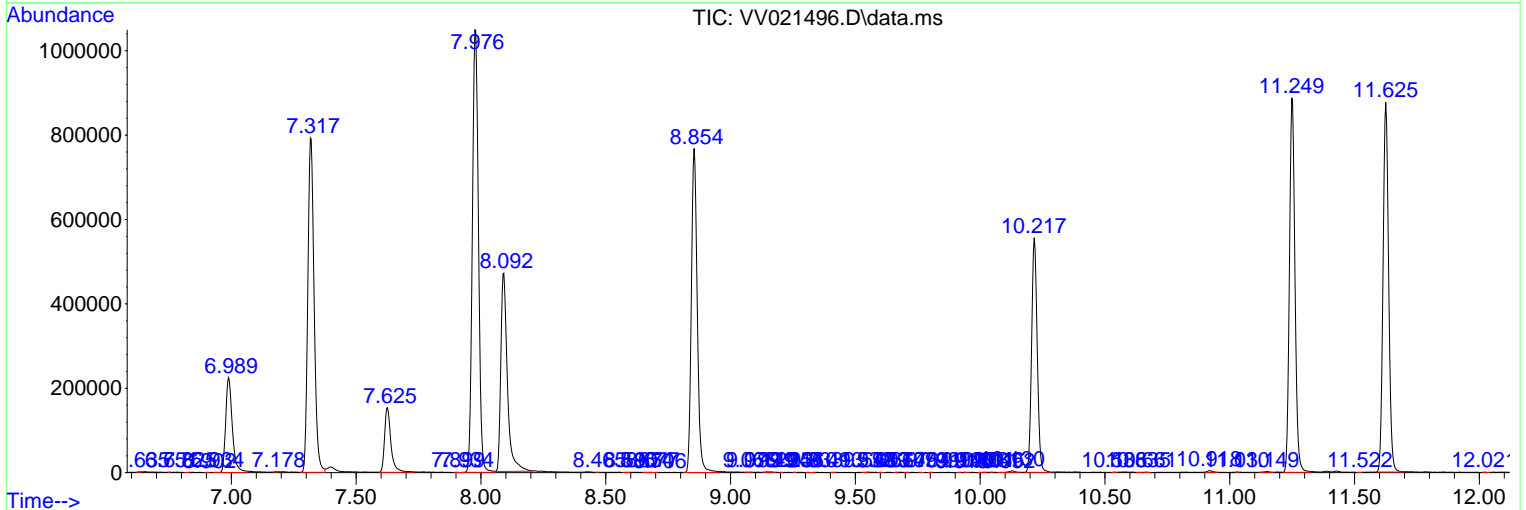
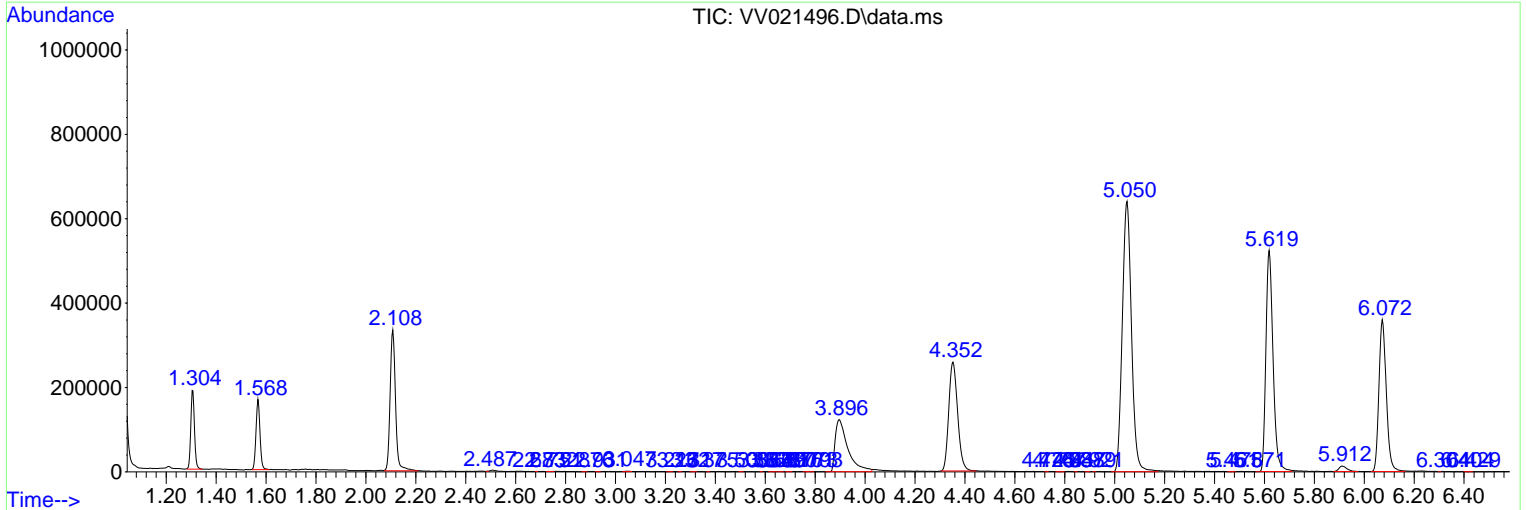
Sum of corrected areas: 14954973

Data Path : Z:\voasrv\HPCHEM1\MSVOA_V\Data\VV060421\
 Data File : VV021496.D
 Acq On : 04 Jun 2021 10:46
 Operator : SY/MD
 Sample : M2605-04DL 100X
 Misc : 5.0mL/MSVOA_V/WATER
 ALS Vial : 5 Sample Multiplier: 1

Instrument :
 MSVOA_V
ClientSampled :
 BG7KODL

Quant Method : Z:\voasrv\HPCHEM1\MSVOA_V\Method\SFAMVLM052721WMA.M
 Quant Title : VOC Analysis

TIC Library : C:\DATABASE\NIST11.L
 TIC Integration Parameters: LSCINT.P



Data Path : Z:\voasrv\HPCHEM1\MSVOA_V\Data\VV060421\
Data File : VV021496.D
Acq On : 04 Jun 2021 10:46
Operator : SY/MD
Sample : M2605-04DL 100X
Misc : 5.0mL/MSVOA_V/WATER
ALS Vial : 5 Sample Multiplier: 1

Instrument :
MSVOA_V
ClientSampleId :
BG7K0DL

Quant Method : Z:\voasrv\HPCHEM1\MSVOA_V\Method\SFAMVLM052721WMA.M
Quant Title : VOC Analysis

TIC Library : C:\DATABASE\NIST11.L
TIC Integration Parameters: LSCINT.P

No Library Search Compounds Detected

Data Path : Z:\voasrv\HPCHEM1\MSVOA_V\Data\VV060421\
Data File : VV021496.D
Acq On : 04 Jun 2021 10:46
Operator : SY/MD
Sample : M2605-04DL 100X
Misc : 5.0mL/MSVOA_V/WATER
ALS Vial : 5 Sample Multiplier: 1

Instrument :
MSVOA_V
ClientSampled :
BG7K0DL

Quant Method : Z:\voasrv\HPCHEM1\MSVOA_V\Method\SFAMVLM052721WMA.M
Quant Title : VOC Analysis

TIC Library : C:\DATABASE\NIST11.L
TIC Integration Parameters: LSCINT.P

TIC Top Hit name	RT	EstConc	Units	Response	--Internal Standard--		
					#	RT	Resp Conc
