

Data Path : Z:\VOASRV\HPCHEM1\MSVOA_V\DATA\VV060520\
 Data File : VV016575.D
 Acq On : 06 Jun 2020 07:37
 Operator : SY/MD
 Sample : L2862-21
 Misc : 5.0mL/MSVOA_V/WATER
 ALS Vial : 54 Sample Multiplier: 1

Instrument :
 MSVOA_V
 ClientSampleId :
 F9E38

Integration Parameters: LSCINT.P

Integrator: RTE
 Smoothing : OFF
 Sampling : 1
 Start Thrs: 0.2
 Stop Thrs : 0

Filtering: 5
 Min Area: 0 % of largest Peak
 Max Peaks: 100
 Peak Location: TOP

If leading or trailing edge < 100 prefer < Baseline drop else tangent >
 Peak separation: 5

Method : Z:\VOASRV\HPCHEM1\MSVOA_V\METHOD\SOMVLM060320WMA.M
 Title : VOC Analysis

Signal : TIC

peak #	R.T. min	first scan	max scan	last scan	PK TY	peak height	corr. area	corr. % max.	% of total
1	1.315	64	70	79	rVB	192250	186609	12.21%	1.632%
2	1.563	140	147	160	rVB	133171	159813	10.46%	1.398%
3	2.116	310	319	332	rBV	293798	430062	28.14%	3.761%
4	2.290	366	373	390	rVB	12356	28532	1.87%	0.250%
5	2.521	439	445	453	rVB10	2051	3415	0.22%	0.030%
6	2.775	522	524	525	rBV2	1029	385	0.03%	0.003%
7	2.839	542	544	547	rBV4	854	389	0.03%	0.003%
8	2.855	547	549	553	rVB4	1026	710	0.05%	0.006%
9	3.113	628	629	633	rVB4	948	655	0.04%	0.006%
10	3.216	657	661	663	rBV3	1194	905	0.06%	0.008%
11	3.225	663	664	667	rBV3	924	469	0.03%	0.004%
12	3.296	684	686	690	rBV3	1571	1023	0.07%	0.009%
13	3.315	690	692	695	rVV3	1064	544	0.04%	0.005%
14	3.360	701	706	708	rBV5	1423	1181	0.08%	0.010%
15	3.392	714	716	719	rBV4	741	577	0.04%	0.005%
16	3.476	741	742	745	rVB4	1252	531	0.03%	0.005%
17	3.508	750	752	755	rBV4	655	398	0.03%	0.003%
18	3.560	764	768	772	rBV5	1420	1124	0.07%	0.010%
19	3.669	800	802	804	rVB3	1469	520	0.03%	0.005%
20	3.785	835	838	839	rBV3	1176	534	0.03%	0.005%
21	3.894	858	872	897	rBV	117969	316918	20.74%	2.771%
22	4.264	984	987	989	rBV4	870	512	0.03%	0.004%
23	4.373	1005	1021	1048	rBV	242649	596260	39.02%	5.214%
24	4.582	1085	1086	1093	rVB6	905	752	0.05%	0.007%
25	4.630	1099	1101	1104	rVB4	1393	668	0.04%	0.006%
26	4.814	1152	1158	1159	rBV7	1102	971	0.06%	0.008%
27	4.913	1187	1189	1192	rVB3	1438	594	0.04%	0.005%
28	4.984	1207	1211	1212	rBV2	633	434	0.03%	0.004%
29	5.071	1216	1238	1259	rBV2	584644	1528259	100.00%	13.364%
30	5.354	1321	1326	1331	rVB7	1807	1607	0.11%	0.014%
31	5.376	1331	1333	1339	rBV5	1463	1431	0.09%	0.013%
32	5.518	1373	1377	1378	rBV4	1175	780	0.05%	0.007%
33	5.640	1401	1415	1435	rBV	456741	910809	59.60%	7.965%
34	5.804	1461	1466	1467	rBV3	1560	1174	0.08%	0.010%

Data Path : Z:\VOASRV\HPCHEM1\MSVOA_V\DATA\VV060520\
 Data File : VV016575.D
 Acq On : 06 Jun 2020 07:37
 Operator : SY/MD
 Sample : L2862-21
 Misc : 5.0mL/MSVOA_V/WATER
 ALS Vial : 54 Sample Multiplier: 1

Instrument :
 MSVOA_V
 ClientSampleId :
 F9E38

Integration Parameters: LSCINT.P

Integrator: RTE
 Smoothing : OFF
 Sampling : 1
 Start Thrs: 0.2
 Stop Thrs : 0

Filtering: 5
 Min Area: 0 % of largest Peak
 Max Peaks: 100
 Peak Location: TOP

If leading or trailing edge < 100 prefer < Baseline drop else tangent >
 Peak separation: 5

Method : Z:\VOASRV\HPCHEM1\MSVOA_V\METHOD\SOMVLM060320WMA.M
 Title : VOC Analysis

35	5.814	1467	1469	1472	rVB4	1834	891	0.06%	0.008%
36	5.849	1477	1480	1483	rBV5	1295	1046	0.07%	0.009%
37	6.093	1542	1556	1578	rBV	334345	682456	44.66%	5.968%
38	6.309	1620	1623	1624	rBV4	1114	636	0.04%	0.006%
39	6.386	1645	1647	1649	rVB2	1109	406	0.03%	0.004%
40	6.408	1649	1654	1657	rBV5	1668	1306	0.09%	0.011%
41	6.428	1658	1660	1662	rBV3	910	436	0.03%	0.004%
42	6.466	1670	1672	1676	rVB5	1427	895	0.06%	0.008%
43	6.502	1676	1683	1684	rBV7	1707	1541	0.10%	0.013%
44	6.537	1691	1694	1697	rBV4	955	845	0.06%	0.007%
45	6.621	1716	1720	1721	rBV2	1797	1113	0.07%	0.010%
46	6.794	1772	1774	1777	rVB4	1139	674	0.04%	0.006%
47	6.839	1786	1788	1790	rBV3	1362	774	0.05%	0.007%
48	6.875	1797	1799	1802	rBV3	906	569	0.04%	0.005%
49	6.900	1803	1807	1810	rVB4	1278	983	0.06%	0.009%
50	6.913	1810	1811	1813	rBV2	975	444	0.03%	0.004%
51	7.006	1830	1840	1860	rBV	180491	319165	20.88%	2.791%
52	7.212	1900	1904	1905	rBV4	1852	1002	0.07%	0.009%
53	7.338	1930	1943	1962	rBV	693923	1193471	78.09%	10.437%
54	7.640	2028	2037	2058	rBV	126370	212167	13.88%	1.855%
55	8.013	2151	2153	2155	rVB3	1194	452	0.03%	0.004%
56	8.029	2155	2158	2162	rBV6	1390	1380	0.09%	0.012%
57	8.106	2171	2182	2210	rBV	429633	760245	49.75%	6.648%
58	8.344	2254	2256	2259	rBV3	1518	818	0.05%	0.007%
59	8.476	2294	2297	2301	rBV5	1541	1185	0.08%	0.010%
60	8.508	2305	2307	2310	rVV4	1287	531	0.03%	0.005%
61	8.531	2312	2314	2316	rVB3	922	454	0.03%	0.004%
62	8.582	2328	2330	2334	rVB5	1111	620	0.04%	0.005%
63	8.788	2389	2394	2396	rBV5	1073	775	0.05%	0.007%
64	8.801	2396	2398	2401	rVB4	1496	749	0.05%	0.007%
65	8.875	2409	2421	2444	rBV	682834	1109331	72.59%	9.701%
66	9.399	2582	2584	2586	rBV3	1104	477	0.03%	0.004%
67	9.527	2621	2624	2625	rBV3	1049	573	0.04%	0.005%
68	9.547	2628	2630	2633	rBV3	1509	1192	0.08%	0.010%
69	9.608	2645	2649	2651	rBV4	1619	1136	0.07%	0.010%
70	9.624	2651	2654	2657	rBV4	916	641	0.04%	0.006%
71	9.746	2682	2692	2699	rBV4	2432	4034	0.26%	0.035%

Data Path : Z:\VOASRV\HPCHEM1\MSVOA_V\DATA\VV060520\
 Data File : VV016575.D
 Acq On : 06 Jun 2020 07:37
 Operator : SY/MD
 Sample : L2862-21
 Misc : 5.0mL/MSVOA_V/WATER
 ALS Vial : 54 Sample Multiplier: 1

Instrument :
 MSVOA_V
 ClientSampleId :
 F9E38

Integration Parameters: LSCINT.P

Integrator: RTE
 Smoothing : OFF
 Sampling : 1
 Start Thrs: 0.2
 Stop Thrs : 0

Filtering: 5
 Min Area: 0 % of largest Peak
 Max Peaks: 100
 Peak Location: TOP

If leading or trailing edge < 100 prefer < Baseline drop else tangent >
 Peak separation: 5

Method : Z:\VOASRV\HPCHEM1\MSVOA_V\METHOD\SOMVLM060320WMA.M
 Title : VOC Analysis

72	9.797	2705	2708	2709	rBV3	1550	860	0.06%	0.008%
73	10.109	2799	2805	2807	rBV6	1703	1480	0.10%	0.013%
74	10.238	2832	2845	2862	rBV	459171	718696	47.03%	6.285%
75	10.354	2876	2881	2884	rBV6	2032	2233	0.15%	0.020%
76	10.611	2959	2961	2963	rBV2	1112	698	0.05%	0.006%
77	10.659	2971	2976	2981	rBV8	2133	1852	0.12%	0.016%
78	11.077	3102	3106	3108	rBV5	1711	1144	0.07%	0.010%
79	11.087	3108	3109	3113	rVB4	1094	468	0.03%	0.004%
80	11.119	3113	3119	3121	rBV6	1926	2193	0.14%	0.019%
81	11.219	3149	3150	3154	rVB4	1397	676	0.04%	0.006%
82	11.270	3155	3166	3189	rVV	692069	1068015	69.88%	9.339%
83	11.527	3244	3246	3248	rBV2	1097	535	0.04%	0.005%
84	11.646	3272	3283	3301	rVB	733011	1139123	74.54%	9.961%
85	11.817	3334	3336	3338	rBV2	1248	656	0.04%	0.006%
86	11.964	3380	3382	3384	rBV2	1596	779	0.05%	0.007%
87	12.026	3399	3401	3402	rBV2	1077	503	0.03%	0.004%
88	12.177	3446	3448	3456	rVB7	1771	1182	0.08%	0.010%
89	12.283	3478	3481	3483	rBV4	2198	1193	0.08%	0.010%
90	12.469	3537	3539	3540	rBV2	1123	512	0.03%	0.004%
91	12.569	3569	3570	3574	rVB3	1159	570	0.04%	0.005%
92	12.784	3635	3637	3639	rBV3	1044	548	0.04%	0.005%
93	12.980	3695	3698	3701	rBV5	1390	1134	0.07%	0.010%
94	13.331	3805	3807	3808	rBV2	1333	555	0.04%	0.005%
95	13.379	3820	3822	3825	rBV3	1188	934	0.06%	0.008%
96	13.485	3853	3855	3859	rVB4	1472	724	0.05%	0.006%
97	13.826	3958	3961	3962	rBV2	945	533	0.03%	0.005%
98	13.961	4000	4003	4005	rBV3	1699	1054	0.07%	0.009%
99	14.096	4041	4045	4046	rBV4	1573	1039	0.07%	0.009%
100	14.955	4310	4312	4315	rBV4	1194	665	0.04%	0.006%

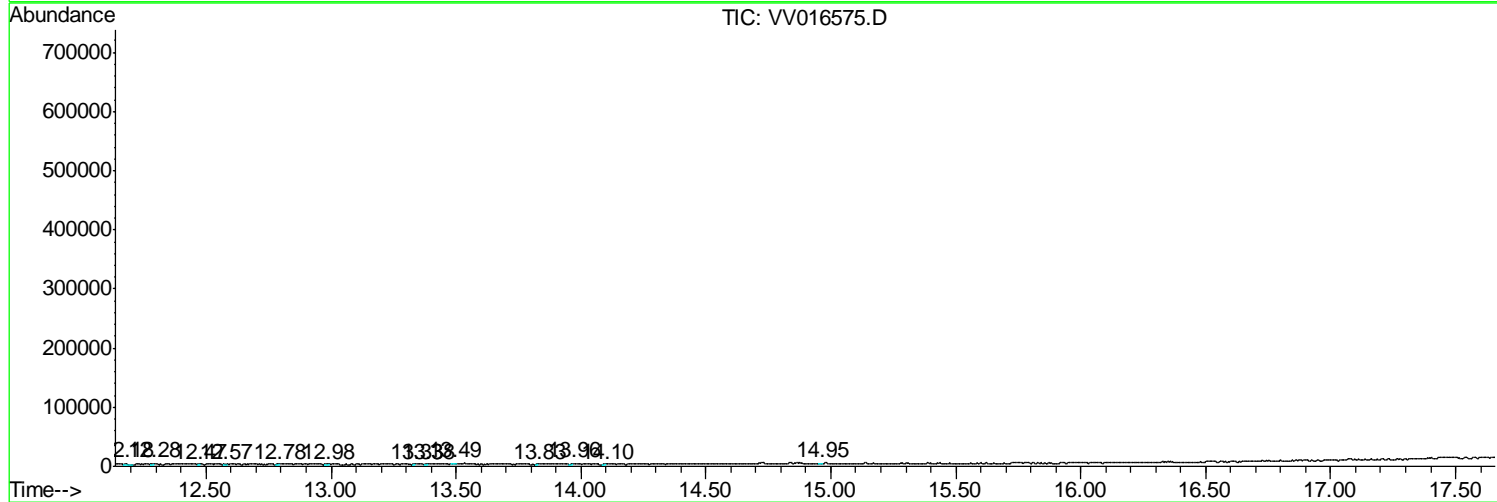
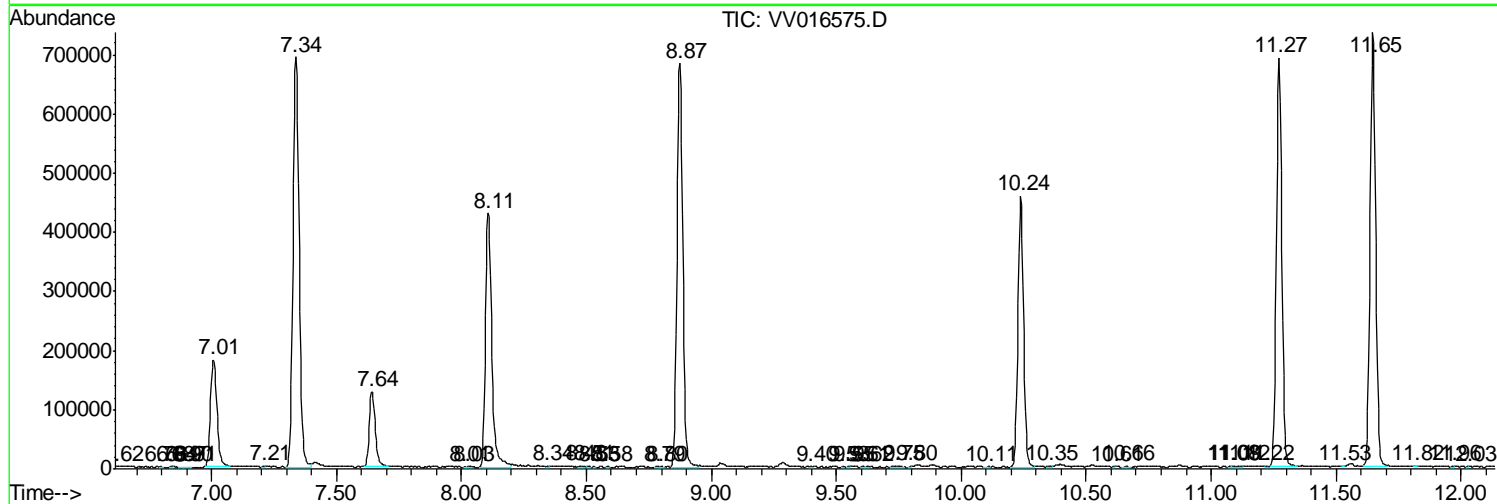
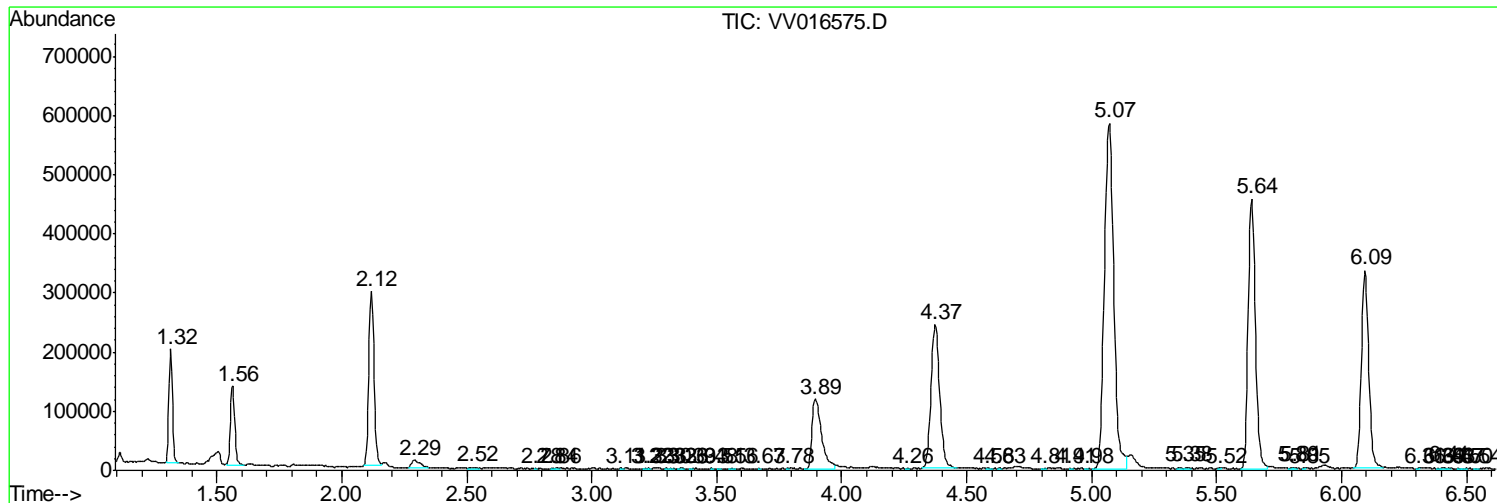
Sum of corrected areas: 11435512

Data Path : Z:\VOASRV\HPCHEM1\MSVOA_V\DATA\VV060520\
 Data File : VV016575.D
 Acq On : 06 Jun 2020 07:37
 Operator : SY/MD
 Sample : L2862-21
 Misc : 5.0mL/MSVOA_V/WATER
 ALS Vial : 54 Sample Multiplier: 1

Instrument :
 MSVOA_V
ClientSampled :
 F9E38

Quant Method : Z:\VOASRV\HPCHEM1\MSVOA_V\METHOD\SOMVLM060320WMA.M
 Quant Title : VOC Analysis

TIC Library : C:\DATABASE\NIST11.L
 TIC Integration Parameters: LSCINT.P



Data Path : Z:\VOASRV\HPCHEM1\MSVOA_V\DATA\VV060520\
Data File : VV016575.D
Acq On : 06 Jun 2020 07:37
Operator : SY/MD
Sample : L2862-21
Misc : 5.0mL/MSVOA_V/WATER
ALS Vial : 54 Sample Multiplier: 1

Instrument :
MSVOA_V
ClientSampleId :
F9E38

Quant Method : Z:\VOASRV\HPCHEM1\MSVOA_V\METHOD\SOMVLM060320WMA.M
Quant Title : VOC Analysis

TIC Library : C:\DATABASE\NIST11.L
TIC Integration Parameters: LSCINT.P

No Library Search Compounds Detected

Data Path : Z:\VOASRV\HPCHEM1\MSVOA_V\DATA\VV060520\
Data File : VV016575.D
Acq On : 06 Jun 2020 07:37
Operator : SY/MD
Sample : L2862-21
Misc : 5.0mL/MSVOA_V/WATER
ALS Vial : 54 Sample Multiplier: 1

Instrument :
MSVOA_V
ClientSampleId :
F9E38

Quant Method : Z:\VOASRV\HPCHEM1\MSVOA_V\METHOD\SOMVLM060320WMA.M
Quant Title : VOC Analysis

TIC Library : C:\DATABASE\NIST11.L
TIC Integration Parameters: LSCINT.P

TIC Top Hit name	RT	EstConc	Units	Response	--Internal Standard--			
					#	RT	Resp	Conc
