

Data Path : Z:\VOASRV\HPCHEM1\MSVOA V\DATA\VV060620\
 Data File : VV016581.D
 Acq On : 06 Jun 2020 11:42
 Operator : SY/MD
 Sample : L2895-02
 Misc : 5.0mL/MSVOA V/WATER
 ALS Vial : 5 Sample Multiplier: 1

Instrument :
 MSVOA_V
 ClientSampleId :
 EW0G7

Quant Time: Jun 06 23:49:23 2020
 Quant Method : Z:\VOASRV\HPCHEM1\MSVOA_V\METHOD\SOMVLM060320WMA.M
 Quant Title : VOC Analysis
 QLast Update : Sat Jun 06 23:47:35 2020
 Response via : Initial Calibration

| Internal Standards | R.T. | QIon | Response | Conc | Units | Dev(Min) |
|----------------------------|-------|------|----------|-------|-------|----------|
| 1) 1,4-Difluorobenzene | 5.64 | 114 | 375031 | 50.00 | ug/L | 0.00 |
| 28) Chlorobenzene-d5 | 8.87 | 117 | 352058 | 50.00 | ug/L | 0.00 |
| 60) 1,4-Dichlorobenzene-d4 | 11.27 | 152 | 167148 | 50.00 | ug/L | 0.00 |

System Monitoring Compounds

| | | | | | | |
|--------------------------------|---------|-------|----------|----------|------|---------|
| 4) Vinyl Chloride-d3 | 1.31 | 65 | 107484 | 40.46 | ug/L | 0.00 |
| Spiked Amount | 50.000 | Range | 60 - 135 | Recovery | = | 80.92% |
| 7) Chloroethane-d5 | 1.56 | 69 | 81855 | 42.69 | ug/L | 0.00 |
| Spiked Amount | 50.000 | Range | 70 - 130 | Recovery | = | 85.38% |
| 11) 1,1-Dichloroethene-d2 | 2.12 | 63 | 156072 | 33.15 | ug/L | 0.00 |
| Spiked Amount | 50.000 | Range | 60 - 125 | Recovery | = | 66.30% |
| 21) 2-Butanone-d5 | 3.89 | 46 | 198164 | 116.67 | ug/L | 0.00 |
| Spiked Amount | 100.000 | Range | 40 - 130 | Recovery | = | 116.67% |
| 24) Chloroform-d | 4.37 | 84 | 245711 | 49.29 | ug/L | 0.00 |
| Spiked Amount | 50.000 | Range | 70 - 125 | Recovery | = | 98.58% |
| 26) 1,2-Dichloroethane-d4 | 5.05 | 65 | 171775 | 51.46 | ug/L | 0.00 |
| Spiked Amount | 50.000 | Range | 70 - 125 | Recovery | = | 102.92% |
| 32) Benzene-d6 | 5.07 | 84 | 496968 | 52.70 | ug/L | 0.00 |
| Spiked Amount | 50.000 | Range | 70 - 125 | Recovery | = | 105.40% |
| 36) 1,2-Dichloropropane-d6 | 6.09 | 67 | 158645 | 53.99 | ug/L | 0.00 |
| Spiked Amount | 50.000 | Range | 70 - 120 | Recovery | = | 107.98% |
| 41) Toluene-d8 | 7.34 | 98 | 445621 | 52.03 | ug/L | 0.00 |
| Spiked Amount | 50.000 | Range | 80 - 120 | Recovery | = | 104.06% |
| 43) trans-1,3-Dichloropropene- | 7.64 | 79 | 75276 | 52.57 | ug/L | 0.00 |
| Spiked Amount | 50.000 | Range | 60 - 125 | Recovery | = | 105.14% |
| 47) 2-Hexanone-d5 | 8.11 | 63 | 152533 | 121.21 | ug/L | 0.00 |
| Spiked Amount | 100.000 | Range | 45 - 130 | Recovery | = | 121.21% |
| 57) 1,1,2,2-Tetrachloroethane- | 10.24 | 84 | 215856 | 54.16 | ug/L | 0.00 |
| Spiked Amount | 50.000 | Range | 65 - 120 | Recovery | = | 108.32% |
| 64) 1,2-Dichlorobenzene-d4 | 11.65 | 152 | 185045 | 58.91 | ug/L | 0.00 |
| Spiked Amount | 50.000 | Range | 80 - 120 | Recovery | = | 117.82% |

Target Compounds

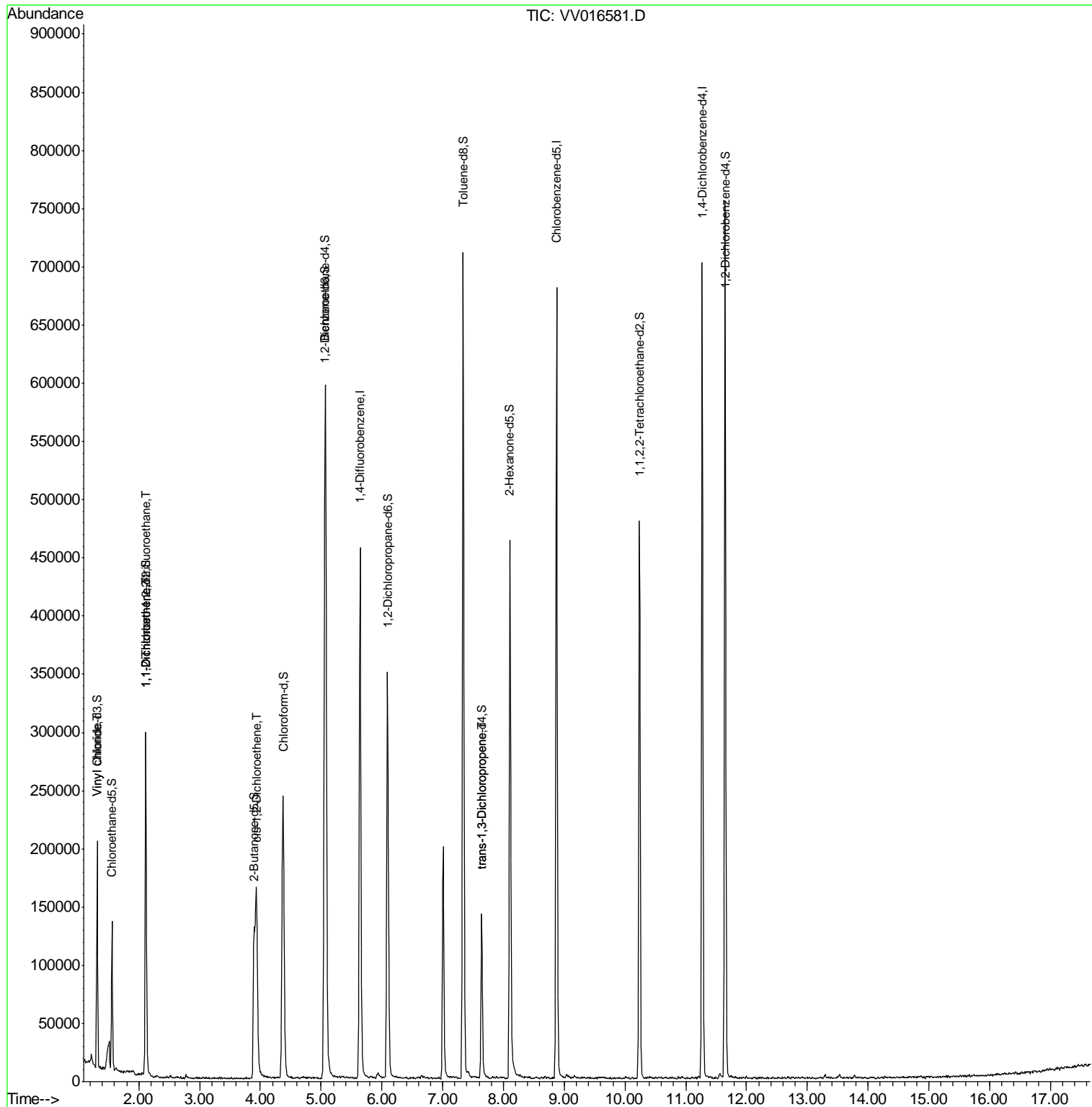
| Target Compounds | R.T. | QIon | Response | Conc | Units | Ovalue |
|--------------------------------|------|------|----------|--------|--------|--------|
| 5) Vinyl chloride | 1.32 | 62 | 9535 | 3.310 | ug/L # | 74 |
| 10) 1,1,2-Trichloro-1,2,2-trif | 2.12 | 101 | 1674 | 0.774 | ug/L # | 23 |
| 12) 1,1-Dichloroethene | 2.12 | 96 | 1607 | 0.772 | ug/L # | 1 |
| 20) cis-1,2-Dichloroethene | 3.93 | 96 | 78917 | 27.835 | ug/L | 99 |
| 44) trans-1,3-Dichloropropene | 7.64 | 75 | 4138 | 1.072 | ug/L # | 72 |

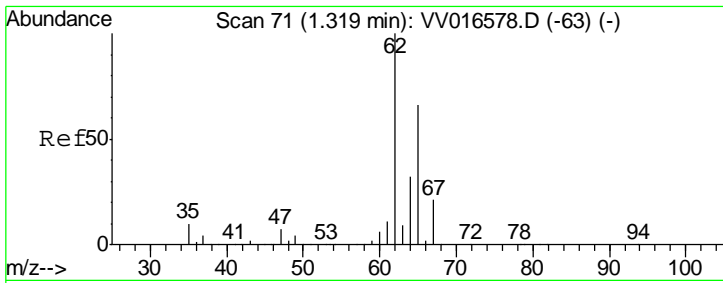
(#) = qualifier out of range (m) = manual integration (+) = signals summed

Data Path : Z:\VOASRV\HPCHEM1\MSVOA V\DATA\VV060620\
 Data File : VV016581.D
 Acq On : 06 Jun 2020 11:42
 Operator : SY/MD
 Sample : L2895-02
 Misc : 5.0mL/MSVOA V/WATER
 ALS Vial : 5 Sample Multiplier: 1

Instrument :
 MSVOA_V
 ClientSampled :
 EW0G7

Quant Time: Jun 06 23:49:23 2020
 Quant Method : Z:\VOASRV\HPCHEM1\MSVOA_V\METHOD\SOMVLM060320WMA.M
 Quant Title : VOC Analysis
 QLast Update : Sat Jun 06 23:47:35 2020
 Response via : Initial Calibration

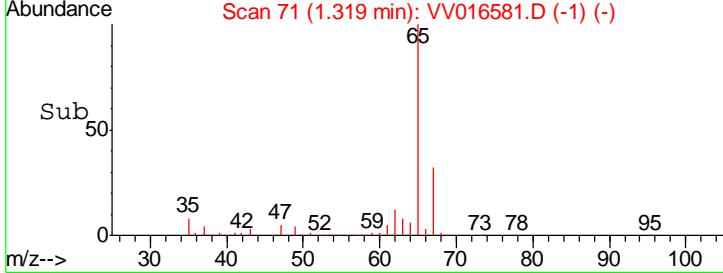
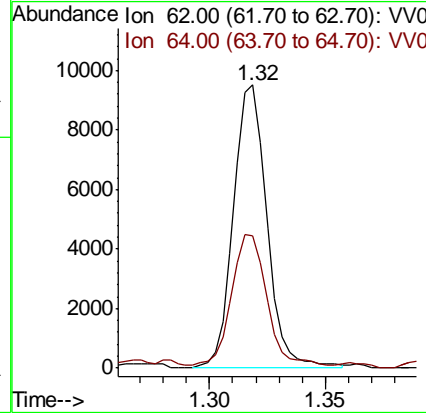
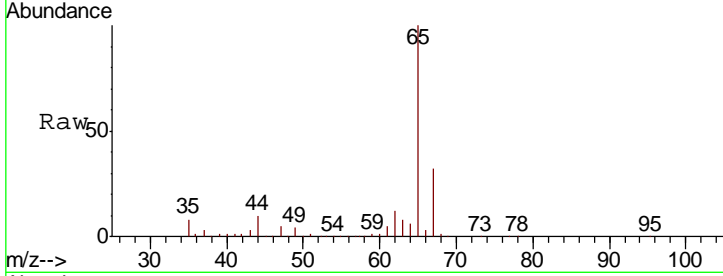




#5
 Vinyl chloride
 Concen: 3.310 ug/L
 RT: 1.32 min Scan# 71
 Delta R.T. 0.00 min
 Lab File: VV016581.D
 Acq: 06 Jun 2020 11:42

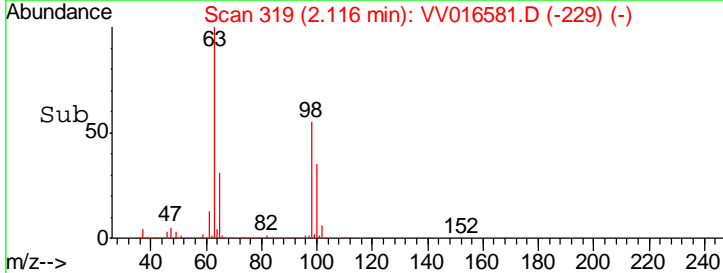
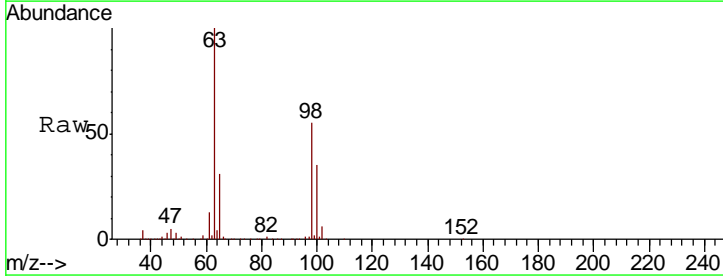
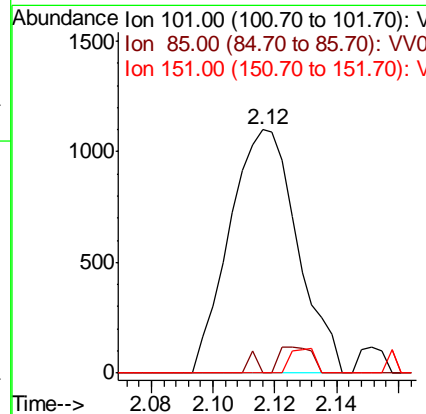
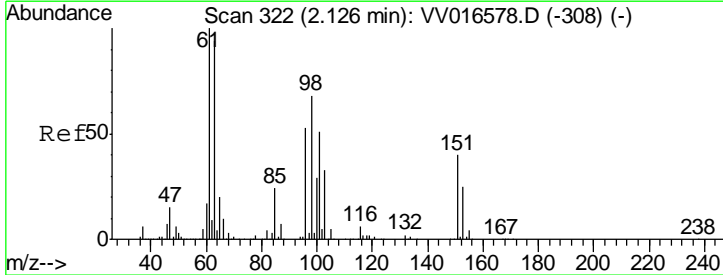
Instrument :
 MSVOA_V
ClientSampled :
 EW0G7

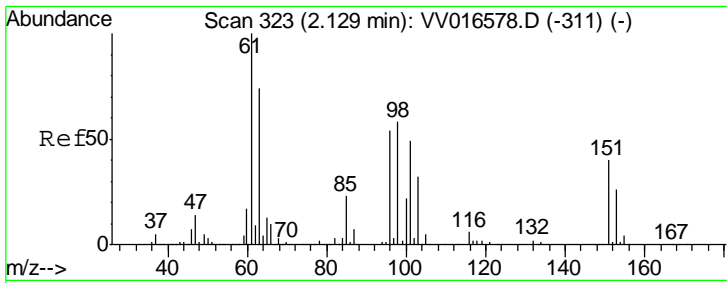
| Tgt Ion | Resp | Lower | Upper |
|---------|------|-------|-------|
| 62 | 100 | | |
| 64 | 46.9 | 22.7 | 42.1# |



#10
 1,1,2-Trichloro-1,2,2-trifluoroethane
 Concen: 0.774 ug/L
 RT: 2.12 min Scan# 319
 Delta R.T. -0.01 min
 Lab File: VV016581.D
 Acq: 06 Jun 2020 11:42

| Tgt Ion | Resp | Lower | Upper |
|---------|------|-------|-------|
| 101 | 100 | | |
| 85 | 4.0 | 35.6 | 53.4# |
| 151 | 3.6 | 61.8 | 92.8# |

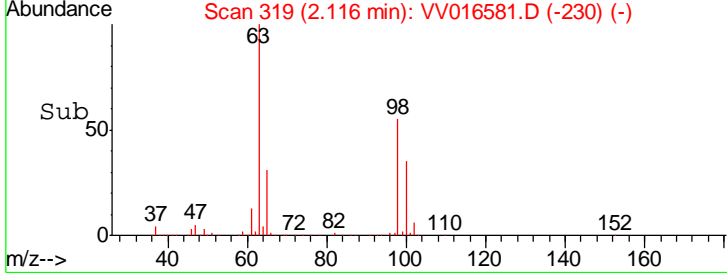
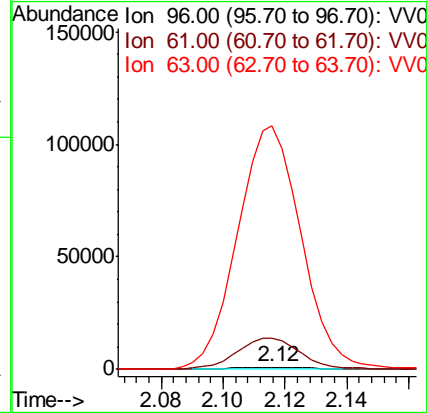
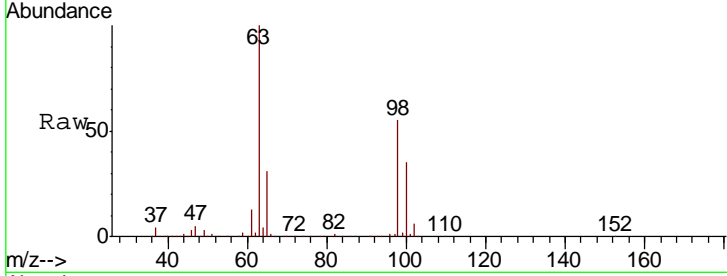




#12
 1,1-Dichloroethene
 Concen: 0.772 ug/L
 RT: 2.12 min Scan# 319
 Delta R.T. -0.01 min
 Lab File: VV016581.D
 Acq: 06 Jun 2020 11:42

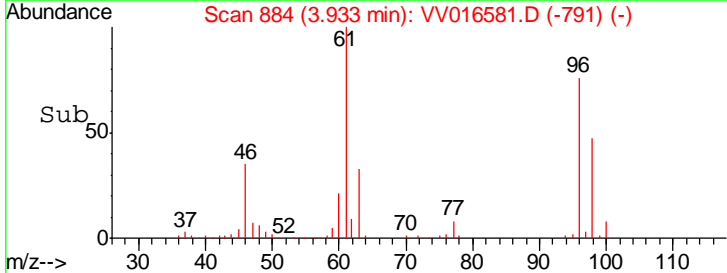
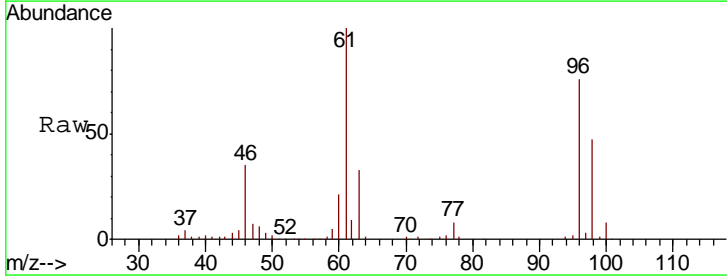
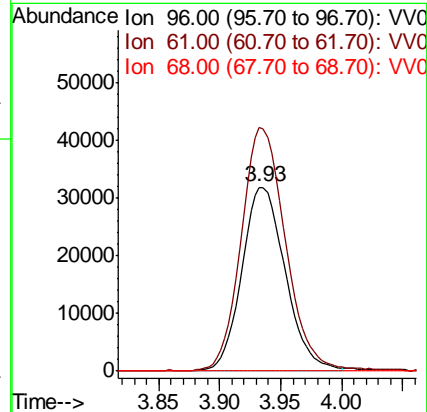
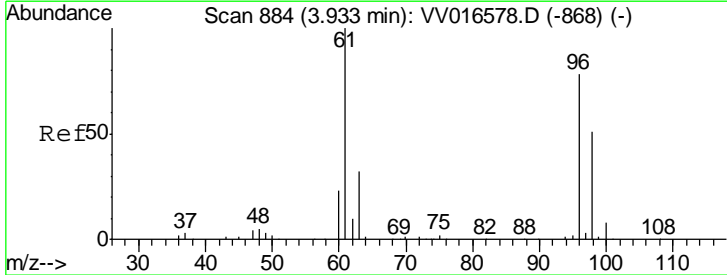
Instrument : MSVOA_V
 ClientSampled : EW0G7

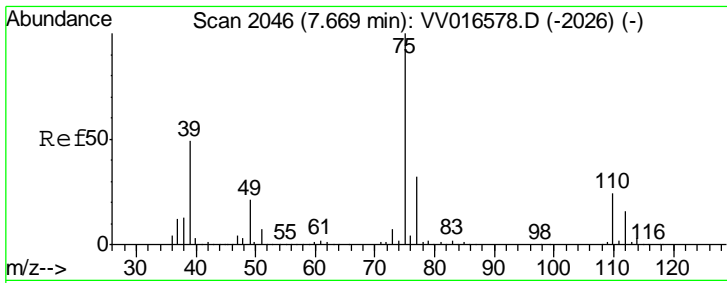
Tgt Ion: 96 Resp: 1607
 Ion Ratio Lower Upper
 96 100
 61 1451.5 125.5 233.1#
 63 11144.8 104.0 193.1#



#20
 cis-1,2-Dichloroethene
 Concen: 27.835 ug/L
 RT: 3.93 min Scan# 884
 Delta R.T. -0.00 min
 Lab File: VV016581.D
 Acq: 06 Jun 2020 11:42

Tgt Ion: 96 Resp: 78917
 Ion Ratio Lower Upper
 96 100
 61 132.3 93.4 173.4
 68 0.0 0.0 0.0





#44
 trans-1,3-Dichloropropene
 Concen: 1.072 ug/L
 RT: 7.64 min Scan# 2037
 Delta R.T. -0.03 min
 Lab File: VV016581.D
 Acq: 06 Jun 2020 11:42

Instrument :
 MSVOA_V
 ClientSampled :
 EW0G7

Tot Ion: 75 Resp: 4138
 Ion Ratio Lower Upper
 75 100
 77 47.1 22.2 41.2#

