

Data Path : Z:\VOASRV\HPCHEM1\MSVOA V\DATA\VV060620\
 Data File : VV016600.D
 Acq On : 06 Jun 2020 19:14
 Operator : SY/MD
 Sample : L2895-21
 Misc : 5.0mL/MSVOA V/WATER
 ALS Vial : 24 Sample Multiplier: 1

Instrument :
 MSVOA_V
 ClientSampleId :
 EWOM3

Quant Time: Jun 06 23:51:21 2020
 Quant Method : Z:\VOASRV\HPCHEM1\MSVOA_V\METHOD\SOMVLM060320WMA.M
 Quant Title : VOC Analysis
 QLast Update : Sat Jun 06 23:47:35 2020
 Response via : Initial Calibration

| Internal Standards | R.T. | QIon | Response | Conc | Units | Dev(Min) |
|----------------------------|-------|------|----------|-------|-------|----------|
| 1) 1,4-Difluorobenzene | 5.64 | 114 | 360440 | 50.00 | ug/L | 0.00 |
| 28) Chlorobenzene-d5 | 8.87 | 117 | 336576 | 50.00 | ug/L | 0.00 |
| 60) 1,4-Dichlorobenzene-d4 | 11.27 | 152 | 165964 | 50.00 | ug/L | 0.00 |

System Monitoring Compounds

| | | | | | | |
|--------------------------------|---------|-------|----------|----------|------|---------|
| 4) Vinyl Chloride-d3 | 1.31 | 65 | 85048 | 33.31 | ug/L | 0.00 |
| Spiked Amount | 50.000 | Range | 60 - 135 | Recovery | = | 66.62% |
| 7) Chloroethane-d5 | 1.56 | 69 | 66764 | 36.23 | ug/L | 0.00 |
| Spiked Amount | 50.000 | Range | 70 - 130 | Recovery | = | 72.46% |
| 11) 1,1-Dichloroethene-d2 | 2.12 | 63 | 126187 | 27.88 | ug/L | 0.00 |
| Spiked Amount | 50.000 | Range | 60 - 125 | Recovery | = | 55.76%# |
| 21) 2-Butanone-d5 | 3.89 | 46 | 172790 | 105.85 | ug/L | 0.00 |
| Spiked Amount | 100.000 | Range | 40 - 130 | Recovery | = | 105.85% |
| 24) Chloroform-d | 4.37 | 84 | 215894 | 45.06 | ug/L | 0.00 |
| Spiked Amount | 50.000 | Range | 70 - 125 | Recovery | = | 90.12% |
| 26) 1,2-Dichloroethane-d4 | 5.05 | 65 | 150986 | 47.06 | ug/L | 0.00 |
| Spiked Amount | 50.000 | Range | 70 - 125 | Recovery | = | 94.12% |
| 32) Benzene-d6 | 5.07 | 84 | 415747 | 46.11 | ug/L | 0.00 |
| Spiked Amount | 50.000 | Range | 70 - 125 | Recovery | = | 92.22% |
| 36) 1,2-Dichloropropane-d6 | 6.09 | 67 | 134812 | 47.99 | ug/L | 0.00 |
| Spiked Amount | 50.000 | Range | 70 - 120 | Recovery | = | 95.98% |
| 41) Toluene-d8 | 7.34 | 98 | 374645 | 45.75 | ug/L | 0.00 |
| Spiked Amount | 50.000 | Range | 80 - 120 | Recovery | = | 91.50% |
| 43) trans-1,3-Dichloropropene- | 7.64 | 79 | 61263 | 44.75 | ug/L | 0.00 |
| Spiked Amount | 50.000 | Range | 60 - 125 | Recovery | = | 89.50% |
| 47) 2-Hexanone-d5 | 8.11 | 63 | 132191 | 109.87 | ug/L | 0.00 |
| Spiked Amount | 100.000 | Range | 45 - 130 | Recovery | = | 109.87% |
| 57) 1,1,2,2-Tetrachloroethane- | 10.24 | 84 | 184181 | 48.34 | ug/L | 0.00 |
| Spiked Amount | 50.000 | Range | 65 - 120 | Recovery | = | 96.68% |
| 64) 1,2-Dichlorobenzene-d4 | 11.65 | 152 | 158490 | 50.82 | ug/L | 0.00 |
| Spiked Amount | 50.000 | Range | 80 - 120 | Recovery | = | 101.64% |

Target Compounds

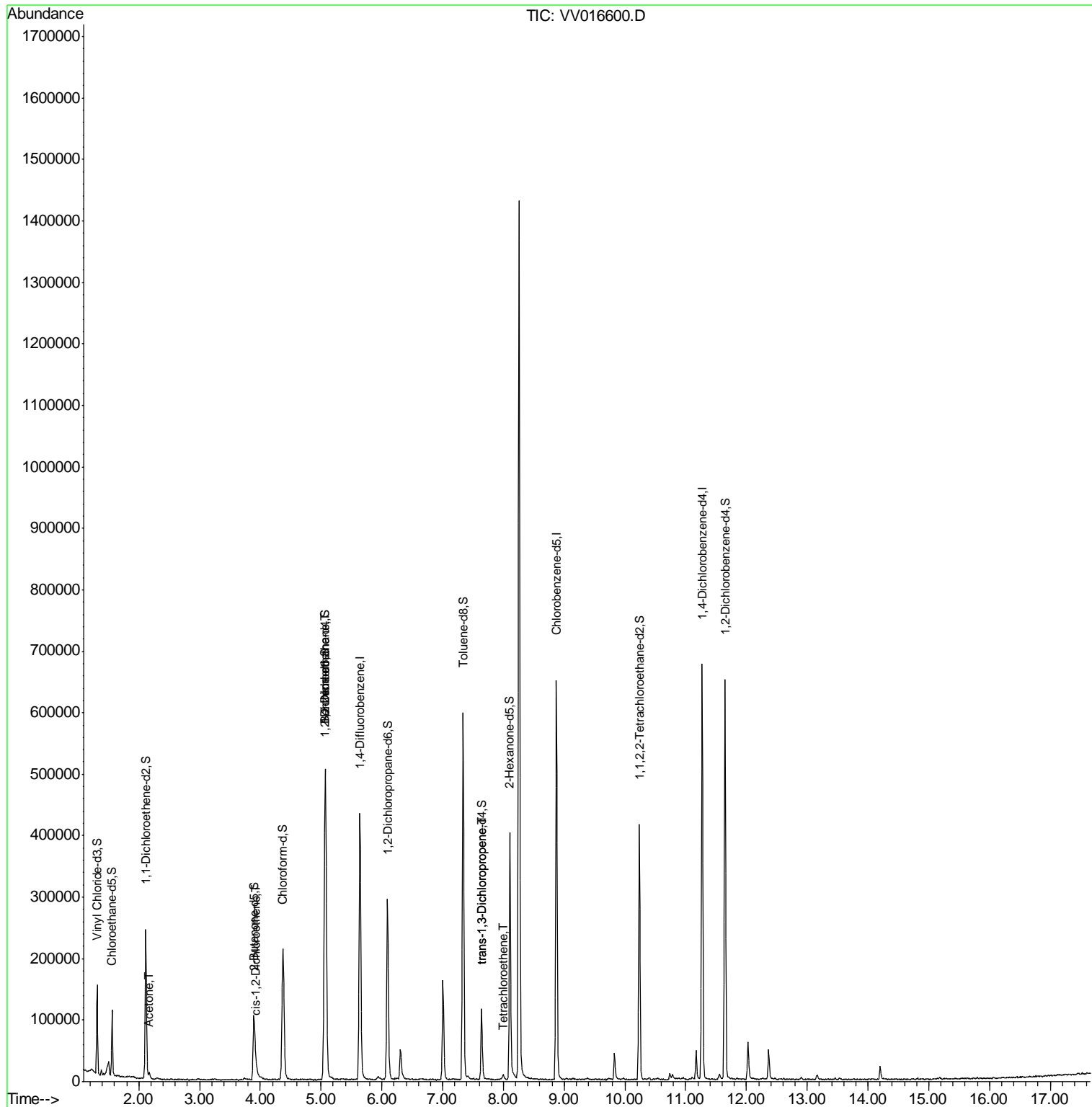
| Target Compounds | R.T. | QIon | Response | Conc | Units | Ovalue |
|-------------------------------|------|------|----------|-------|-------|--------|
| 13) Acetone | 2.17 | 43 | 10059 | 6.593 | ug/L | 87 |
| 20) cis-1,2-Dichloroethene | 3.94 | 96 | 2568 | 0.942 | ug/L | 83 |
| 27) 1,2-Dichloroethane | 5.07 | 62 | 3161 | 0.795 | ug/L | 98 |
| 44) trans-1,3-Dichloropropene | 7.64 | 75 | 3387 | 0.918 | ug/L | 95 |
| 46) Tetrachloroethene | 8.00 | 164 | 1443 | 0.721 | ug/L | 94 |

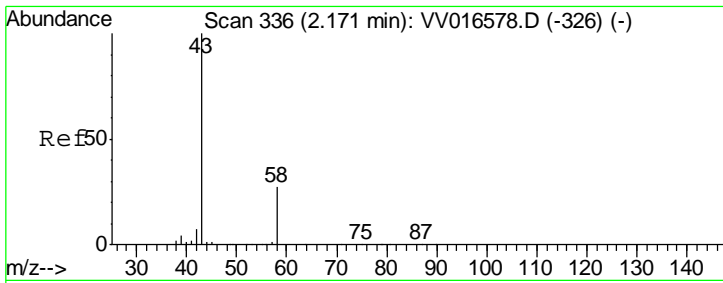
(#) = qualifier out of range (m) = manual integration (+) = signals summed

Data Path : Z:\VOASRV\HPCHEM1\MSVOA V\DATA\VV060620\
 Data File : VV016600.D
 Acq On : 06 Jun 2020 19:14
 Operator : SY/MD
 Sample : L2895-21
 Misc : 5.0mL/MSVOA V/WATER
 ALS Vial : 24 Sample Multiplier: 1

Instrument :
 MSVOA_V
 ClientSampled :
 EW0M3

Quant Time: Jun 06 23:51:21 2020
 Quant Method : Z:\VOASRV\HPCHEM1\MSVOA_V\METHOD\SOMVLM060320WMA.M
 Quant Title : VOC Analysis
 QLast Update : Sat Jun 06 23:47:35 2020
 Response via : Initial Calibration

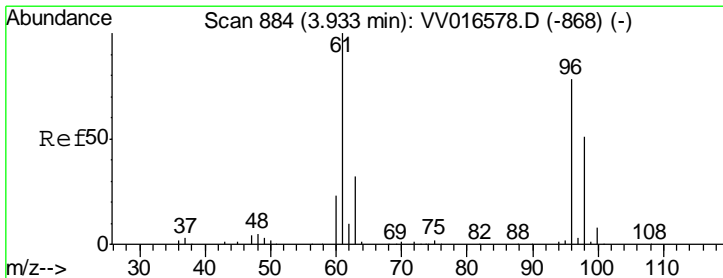
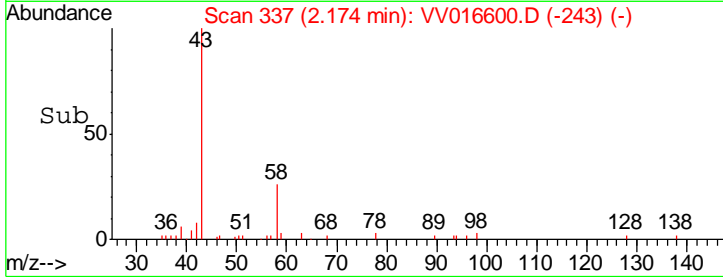
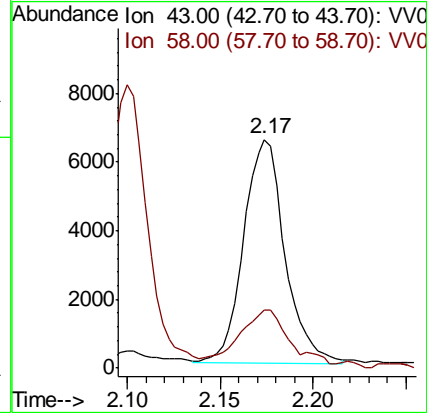
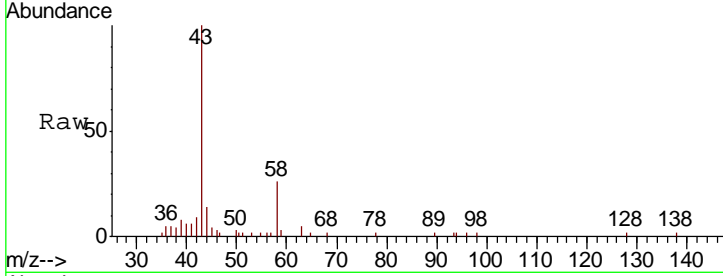




#13
 Acetone
 Concen: 6.593 ug/L
 RT: 2.17 min Scan# 337
 Delta R.T. 0.00 min
 Lab File: VV016600.D
 Acq: 06 Jun 2020 19:14

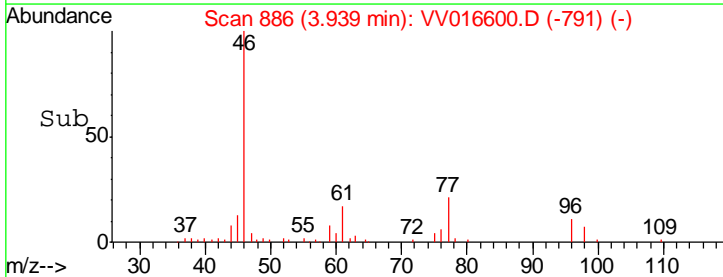
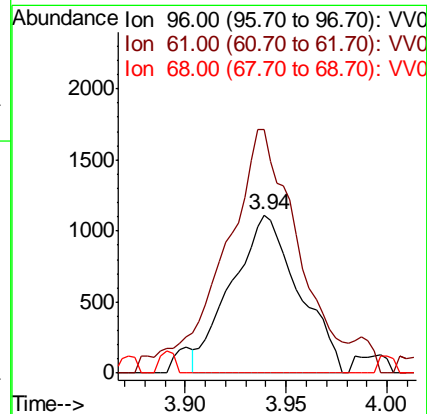
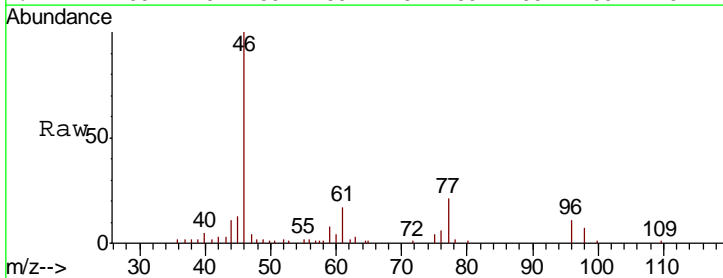
Instrument :
 MSVOA_V
 ClientSampled :
 EWOM3

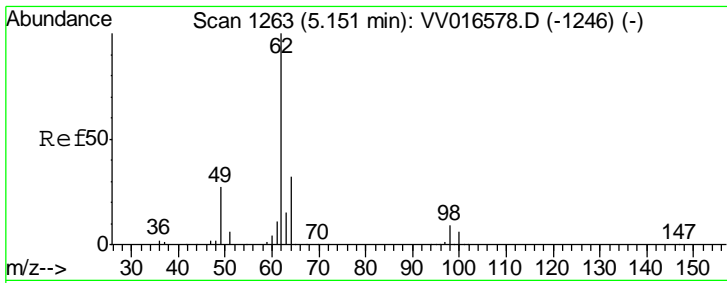
| Tgt Ion | Resp | Lower | Upper |
|---------|-------|-------|-------|
| 43 | 10059 | | |
| 58 | 21.8 | 0.0 | 57.2 |



#20
 cis-1,2-Dichloroethene
 Concen: 0.942 ug/L
 RT: 3.94 min Scan# 886
 Delta R.T. 0.01 min
 Lab File: VV016600.D
 Acq: 06 Jun 2020 19:14

| Tgt Ion | Resp | Lower | Upper |
|---------|-------|-------|-------|
| 96 | 2568 | | |
| 61 | 153.7 | 93.4 | 173.4 |
| 68 | 0.0 | 0.0 | 0.0 |

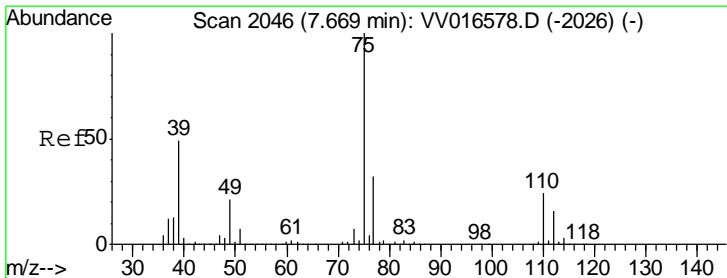
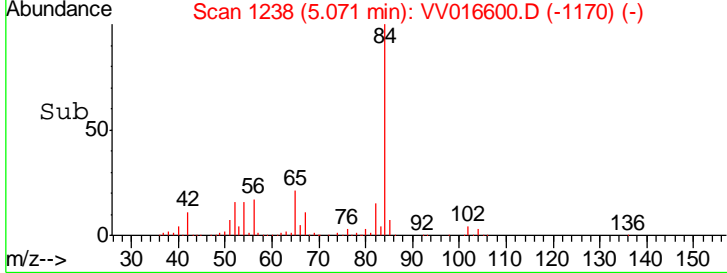
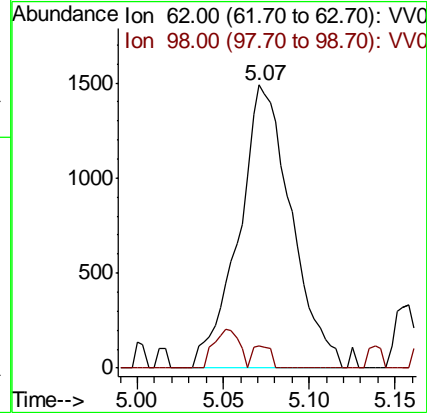
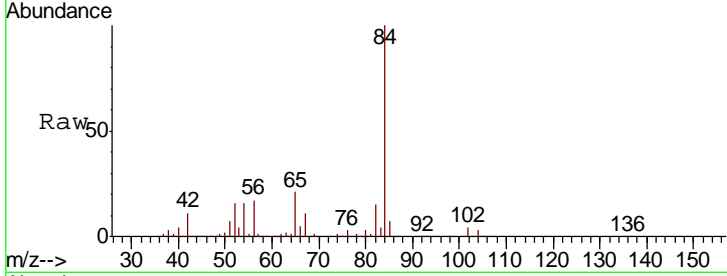




#27
 1,2-Dichloroethane
 Concen: 0.795 ug/L
 RT: 5.07 min Scan# 1238
 Delta R.T. -0.08 min
 Lab File: VV016600.D
 Acq: 06 Jun 2020 19:14

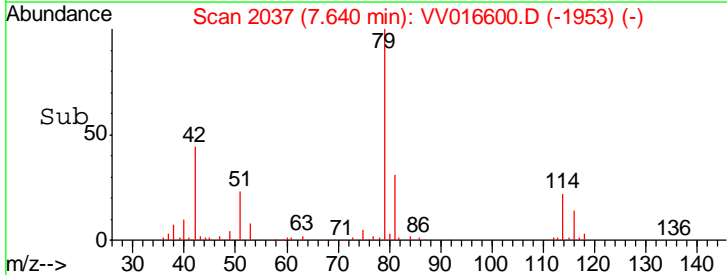
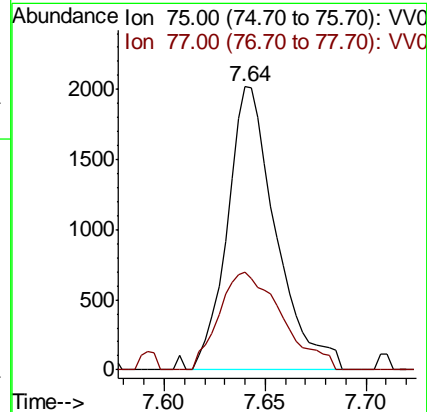
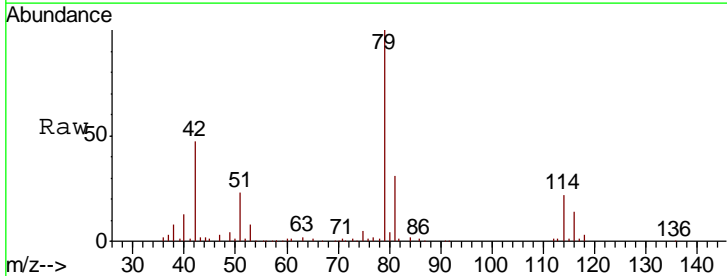
Instrument : MSVOA_V
 ClientSampled : EWOM3

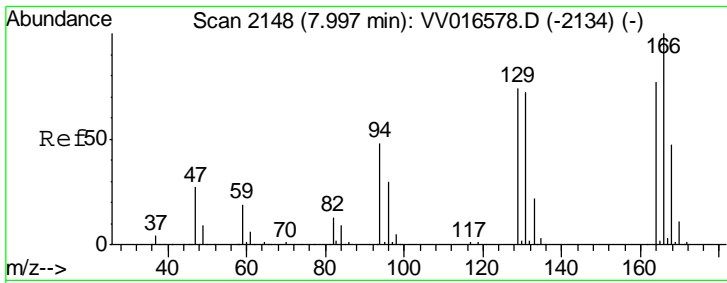
| Tgt Ion | Resp | Lower | Upper |
|---------|------|-------|-------|
| 62 | 100 | | |
| 98 | 7.9 | 6.9 | 10.3 |



#44
 trans-1,3-Dichloropropene
 Concen: 0.918 ug/L
 RT: 7.64 min Scan# 2037
 Delta R.T. -0.03 min
 Lab File: VV016600.D
 Acq: 06 Jun 2020 19:14

| Tgt Ion | Resp | Lower | Upper |
|---------|------|-------|-------|
| 75 | 100 | | |
| 77 | 34.5 | 22.2 | 41.2 |

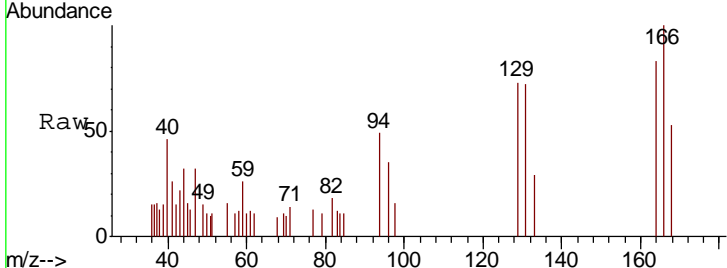




#46

Tetrachloroethene
 Concen: 0.721 ug/L
 RT: 8.00 min Scan# 2149
 Delta R.T. 0.00 min
 Lab File: VV016600.D
 Acq: 06 Jun 2020 19:14

Instrument :
 MSVOA_V
ClientSampled :
 EW0M3



Tot Ion:164 Resp: 1443

| Ion | Ratio | Lower | Upper |
|-----|-------|-------|-------|
| 164 | 100 | | |
| 129 | 88.2 | 67.7 | 125.7 |
| 131 | 86.3 | 63.8 | 118.6 |
| 166 | 120.6 | 88.7 | 164.7 |

