

Data Path : Z:\VOASRV\HPCHEM1\MSVOA V\DATA\VV060620\
 Data File : VV016616.D
 Acq On : 07 Jun 2020 02:56
 Operator : SY/MD
 Sample : L2875-17
 Misc : 5.0mL/MSVOA V/WATER
 ALS Vial : 41 Sample Multiplier: 1

Instrument :
 MSVOA_V
 ClientSampled :
 ETTT9

Integration Parameters: LSCINT.P

Integrator: RTE
 Smoothing : OFF
 Sampling : 1
 Start Thrs: 0.2
 Stop Thrs : 0

Filtering: 5
 Min Area: 0 % of largest Peak
 Max Peaks: 100
 Peak Location: TOP

If leading or trailing edge < 100 prefer < Baseline drop else tangent >
 Peak separation: 5

Method : Z:\VOASRV\HPCHEM1\MSVOA_V\METHOD\SOMVLM060320WMA.M
 Title : VOC Analysis

Signal : TIC

peak #	R.T. min	first scan	max scan	last scan	PK TY	peak height	corr. area	corr. % max.	% of total
1	1.312	63	69	79	rVB	183459	192069	12.75%	1.725%
2	1.566	143	148	157	rVB	120319	132859	8.82%	1.193%
3	2.116	310	319	336	rVB	292755	434873	28.87%	3.905%
4	2.364	393	396	399	rBV4	1906	1240	0.08%	0.011%
5	2.418	408	413	418	rBV8	1459	1672	0.11%	0.015%
6	2.492	434	436	438	rBV2	1414	656	0.04%	0.006%
7	2.508	438	441	442	rBV3	1226	646	0.04%	0.006%
8	2.586	462	465	467	rBV4	1887	1159	0.08%	0.010%
9	2.624	472	477	478	rBV3	1156	1078	0.07%	0.010%
10	2.688	495	497	501	rVB5	1000	533	0.04%	0.005%
11	2.843	542	545	547	rVB4	1431	856	0.06%	0.008%
12	2.930	568	572	573	rVB4	1029	729	0.05%	0.007%
13	2.949	576	578	579	rBV2	1003	535	0.04%	0.005%
14	2.984	586	589	591	rBV3	1777	1036	0.07%	0.009%
15	3.151	639	641	645	rVB5	1264	904	0.06%	0.008%
16	3.338	695	699	701	rVB4	1119	744	0.05%	0.007%
17	3.576	769	773	776	rBV6	1164	990	0.07%	0.009%
18	3.621	785	787	789	rBV2	1423	703	0.05%	0.006%
19	3.647	793	795	799	rVB4	1343	850	0.06%	0.008%
20	3.669	799	802	805	rBV4	1139	910	0.06%	0.008%
21	3.827	848	851	855	rVB5	1232	773	0.05%	0.007%
22	3.856	855	860	863	rBV6	1028	1241	0.08%	0.011%
23	3.901	863	874	901	rBV	111524	314315	20.87%	2.822%
24	4.303	995	999	1001	rBV4	1648	1266	0.08%	0.011%
25	4.373	1007	1021	1044	rVB	238598	580280	38.52%	5.211%
26	4.701	1120	1123	1127	rBV5	1416	1160	0.08%	0.010%
27	4.778	1144	1147	1148	rBV3	1022	543	0.04%	0.005%
28	4.936	1195	1196	1199	rBV3	977	573	0.04%	0.005%
29	5.000	1213	1216	1218	rBV4	1242	828	0.05%	0.007%
30	5.071	1221	1238	1263	rVV2	585748	1506362	100.00%	13.526%
31	5.283	1302	1304	1308	rBV5	1139	642	0.04%	0.006%
32	5.447	1354	1355	1358	rBV3	1336	870	0.06%	0.008%
33	5.640	1398	1415	1435	rBV	452629	909163	60.35%	8.164%
34	5.929	1498	1505	1517	rVB5	7723	15287	1.01%	0.137%

Data Path : Z:\VOASRV\HPCHEM1\MSVOA V\DATA\VV060620\
 Data File : VV016616.D
 Acq On : 07 Jun 2020 02:56
 Operator : SY/MD
 Sample : L2875-17
 Misc : 5.0mL/MSVOA V/WATER
 ALS Vial : 41 Sample Multiplier: 1

Instrument :
 MSVOA_V
 ClientSampleId :
 ETTT9

Integration Parameters: LSCINT.P

Integrator: RTE
 Smoothing : OFF
 Sampling : 1
 Start Thrs: 0.2
 Stop Thrs : 0

Filtering: 5
 Min Area: 0 % of largest Peak
 Max Peaks: 100
 Peak Location: TOP

If leading or trailing edge < 100 prefer < Baseline drop else tangent >
 Peak separation: 5

Method : Z:\VOASRV\HPCHEM1\MSVOA_V\METHOD\SOMVLM060320WMA.M
 Title : VOC Analysis

35	6.093	1539	1556	1574	rBV	339017	681135	45.22%	6.116%
36	6.344	1631	1634	1636	rBV4	1481	803	0.05%	0.007%
37	6.434	1659	1662	1663	rBV2	1283	813	0.05%	0.007%
38	6.524	1686	1690	1693	rBV5	797	731	0.05%	0.007%
39	6.550	1696	1698	1701	rBV4	836	661	0.04%	0.006%
40	6.589	1708	1710	1713	rBV4	1342	989	0.07%	0.009%
41	6.621	1717	1720	1721	rBV3	1126	535	0.04%	0.005%
42	6.846	1785	1790	1792	rBV5	1202	1323	0.09%	0.012%
43	6.952	1820	1823	1824	rBV3	1178	750	0.05%	0.007%
44	7.007	1830	1840	1859	rVV	181825	320481	21.28%	2.878%
45	7.338	1929	1943	1962	rBV	699112	1193111	79.20%	10.713%
46	7.537	2003	2005	2007	rBV3	1594	816	0.05%	0.007%
47	7.640	2028	2037	2055	rBV	124983	212968	14.14%	1.912%
48	7.933	2126	2128	2130	rBV3	1070	582	0.04%	0.005%
49	7.945	2130	2132	2136	rVB5	1521	938	0.06%	0.008%
50	8.013	2148	2153	2154	rBV5	1428	979	0.06%	0.009%
51	8.058	2165	2167	2171	rVB4	1171	691	0.05%	0.006%
52	8.106	2171	2182	2210	rBV	391621	732999	48.66%	6.582%
53	8.595	2330	2334	2337	rBV4	1313	1108	0.07%	0.010%
54	8.621	2340	2342	2343	rBV2	1238	536	0.04%	0.005%
55	8.682	2359	2361	2366	rBV5	1035	755	0.05%	0.007%
56	8.775	2388	2390	2394	rVB4	1395	739	0.05%	0.007%
57	8.794	2394	2396	2400	rBV3	1199	992	0.07%	0.009%
58	8.875	2409	2421	2443	rBV	674151	1084478	71.99%	9.738%
59	9.318	2554	2559	2563	rBV7	1602	1408	0.09%	0.013%
60	9.415	2585	2589	2596	rBV6	1900	2337	0.16%	0.021%
61	9.444	2596	2598	2599	rBV2	1319	537	0.04%	0.005%
62	9.553	2629	2632	2633	rBV2	1028	616	0.04%	0.006%
63	9.598	2643	2646	2648	rVB4	1108	586	0.04%	0.005%
64	9.704	2673	2679	2682	rBV8	1890	1724	0.11%	0.015%
65	9.897	2738	2739	2744	rVV4	1451	741	0.05%	0.007%
66	9.920	2744	2746	2750	rVB4	1262	841	0.06%	0.008%
67	10.193	2828	2831	2832	rBV2	1531	866	0.06%	0.008%
68	10.238	2834	2845	2861	rVV	435751	669887	44.47%	6.015%
69	10.547	2939	2941	2943	rBV3	979	557	0.04%	0.005%
70	10.756	3003	3006	3009	rVB5	1492	1091	0.07%	0.010%
71	10.775	3009	3012	3013	rBV3	1651	881	0.06%	0.008%

Data Path : Z:\VOASRV\HPCHEM1\MSVOA V\DATA\VV060620\
 Data File : VV016616.D
 Acq On : 07 Jun 2020 02:56
 Operator : SY/MD
 Sample : L2875-17
 Misc : 5.0mL/MSVOA V/WATER
 ALS Vial : 41 Sample Multiplier: 1

Instrument :
 MSVOA_V
 ClientSampleId :
 ETTT9

Integration Parameters: LSCINT.P

Integrator: RTE
 Smoothing : OFF
 Sampling : 1
 Start Thrs: 0.2
 Stop Thrs : 0

Filtering: 5
 Min Area: 0 % of largest Peak
 Max Peaks: 100
 Peak Location: TOP

If leading or trailing edge < 100 prefer < Baseline drop else tangent >
 Peak separation: 5

Method : Z:\VOASRV\HPCHEM1\MSVOA_V\METHOD\SOMVLM060320WMA.M
 Title : VOC Analysis

72	10.833	3027	3030	3032	rBV3	1330	735	0.05%	0.007%
73	10.875	3040	3043	3045	rBV4	1360	898	0.06%	0.008%
74	11.158	3129	3131	3133	rBV3	1380	777	0.05%	0.007%
75	11.193	3139	3142	3143	rBV2	1133	635	0.04%	0.006%
76	11.270	3155	3166	3183	rBV	658255	1003628	66.63%	9.012%
77	11.463	3224	3226	3230	rBV4	1313	868	0.06%	0.008%
78	11.646	3271	3283	3302	rBV	689441	1073946	71.29%	9.643%
79	12.016	3393	3398	3401	rBV7	1787	1449	0.10%	0.013%
80	12.186	3448	3451	3453	rBV3	2305	1201	0.08%	0.011%
81	12.434	3526	3528	3532	rVB5	1230	648	0.04%	0.006%
82	12.530	3554	3558	3561	rBV5	1388	1179	0.08%	0.011%
83	12.553	3561	3565	3567	rBV4	970	704	0.05%	0.006%
84	12.810	3641	3645	3648	rVV5	1292	836	0.06%	0.008%
85	12.839	3652	3654	3658	rBV4	1580	1141	0.08%	0.010%
86	12.932	3681	3683	3686	rBV4	1620	601	0.04%	0.005%
87	13.087	3726	3731	3735	rVB6	1688	1539	0.10%	0.014%
88	13.116	3735	3740	3742	rBV4	1167	848	0.06%	0.008%
89	13.135	3743	3746	3750	rVB4	1645	919	0.06%	0.008%
90	13.283	3790	3792	3794	rBV3	1068	527	0.03%	0.005%
91	13.344	3808	3811	3812	rVB3	1498	656	0.04%	0.006%
92	13.370	3812	3819	3821	rBV6	1487	1676	0.11%	0.015%
93	13.511	3859	3863	3864	rBV2	1006	668	0.04%	0.006%
94	13.772	3940	3944	3946	rBV4	1312	1076	0.07%	0.010%
95	13.855	3968	3970	3971	rBV2	1611	740	0.05%	0.007%
96	14.000	4011	4015	4018	rBV5	1270	1422	0.09%	0.013%
97	14.186	4069	4073	4074	rBV3	1921	1197	0.08%	0.011%
98	14.537	4177	4182	4183	rBV4	2243	1502	0.10%	0.013%
99	14.698	4227	4232	4237	rBV7	1978	2641	0.18%	0.024%
100	15.386	4443	4446	4449	rBV4	1822	1611	0.11%	0.014%

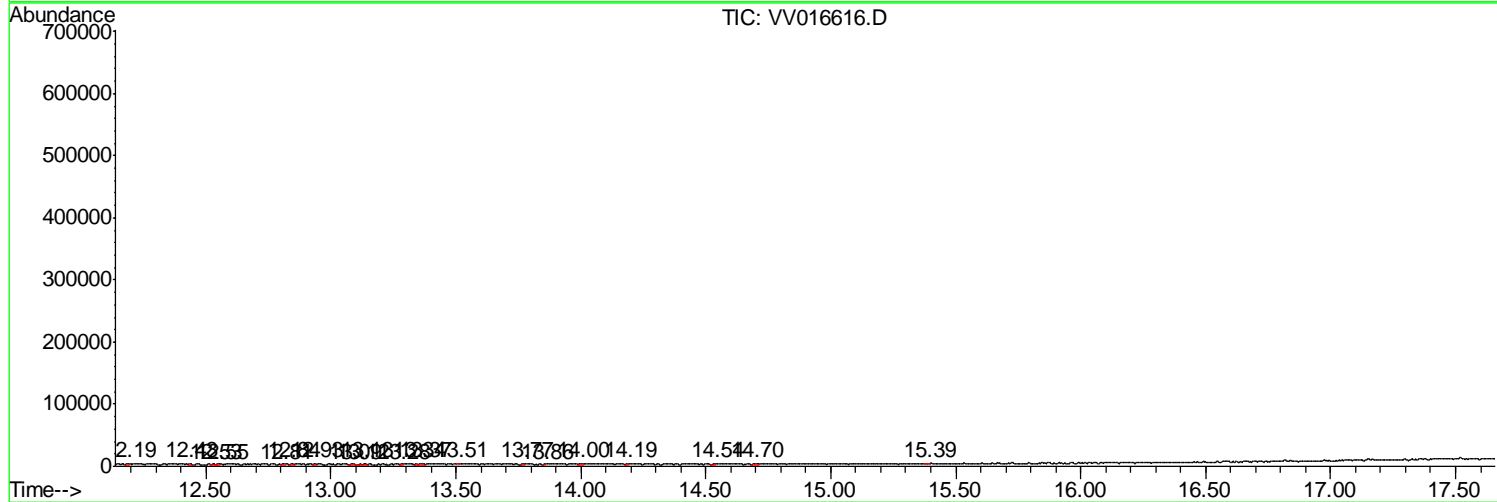
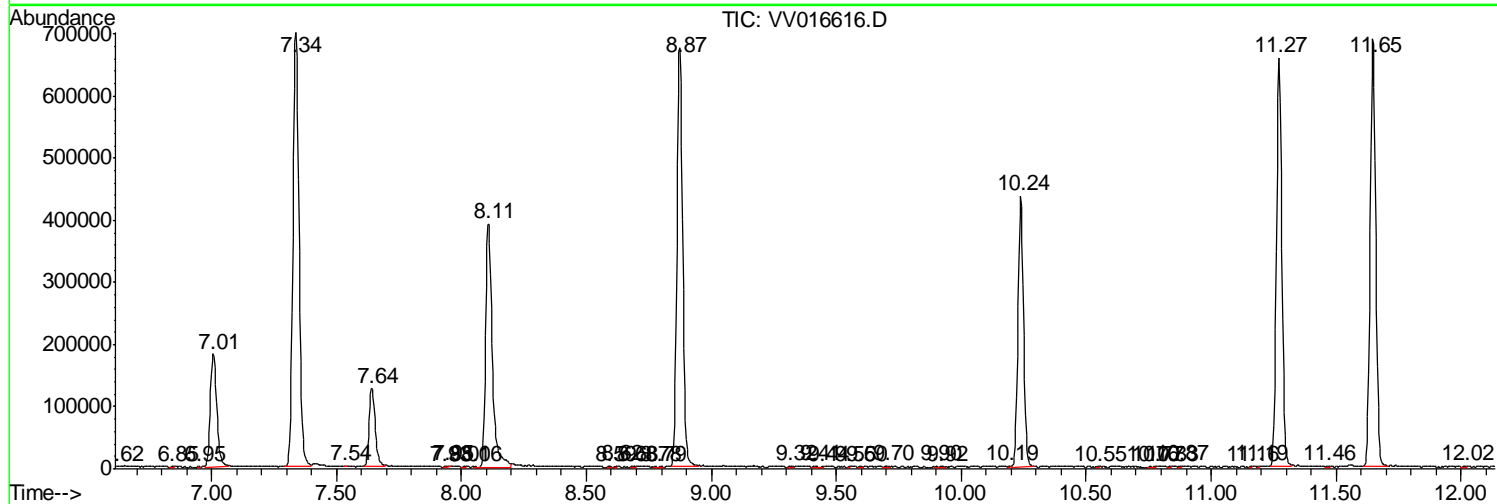
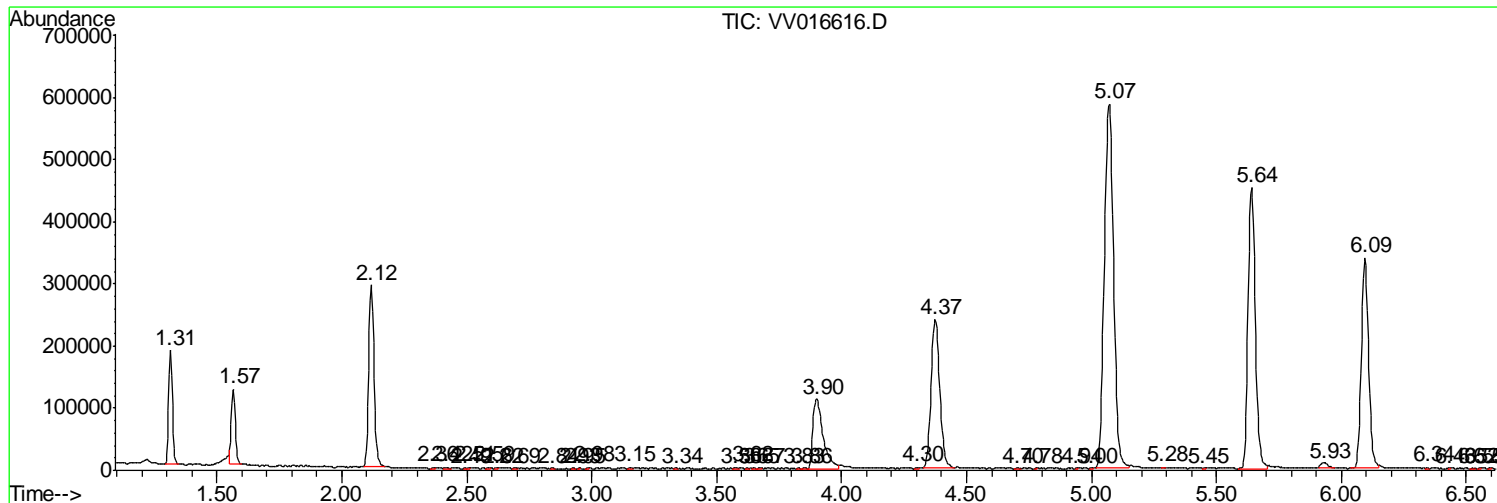
Sum of corrected areas: 11136598

Data Path : Z:\VOASRV\HPCHEM1\MSVOA V\DATA\VV060620\
 Data File : VV016616.D
 Acq On : 07 Jun 2020 02:56
 Operator : SY/MD
 Sample : L2875-17
 Misc : 5.0mL/MSVOA V/WATER
 ALS Vial : 41 Sample Multiplier: 1

Instrument :
 MSVOA_V
 ClientSampled :
 ETTT9

Quant Method : Z:\VOASRV\HPCHEM1\MSVOA_V\METHOD\SOMVLM060320WMA.M
 Quant Title : VOC Analysis

TIC Library : C:\DATABASE\NIST11.L
 TIC Integration Parameters: LSCINT.P



Data Path : Z:\VOASRV\HPCHEM1\MSVOA_V\DATA\VV060620\
Data File : VV016616.D
Acq On : 07 Jun 2020 02:56
Operator : SY/MD
Sample : L2875-17
Misc : 5.0mL/MSVOA_V/WATER
ALS Vial : 41 Sample Multiplier: 1

Instrument :
MSVOA_V
ClientSampleId :
ETTT9

Quant Method : Z:\VOASRV\HPCHEM1\MSVOA_V\METHOD\SOMVLM060320WMA.M
Quant Title : VOC Analysis

TIC Library : C:\DATABASE\NIST11.L
TIC Integration Parameters: LSCINT.P

No Library Search Compounds Detected

Data Path : Z:\VOASRV\HPCHEM1\MSVOA_V\DATA\VV060620\
Data File : VV016616.D
Acq On : 07 Jun 2020 02:56
Operator : SY/MD
Sample : L2875-17
Misc : 5.0mL/MSVOA_V/WATER
ALS Vial : 41 Sample Multiplier: 1

Instrument :
MSVOA_V
ClientSampleId :
ETTT9

Quant Method : Z:\VOASRV\HPCHEM1\MSVOA_V\METHOD\SOMVLM060320WMA.M
Quant Title : VOC Analysis

TIC Library : C:\DATABASE\NIST11.L
TIC Integration Parameters: LSCINT.P

TIC Top Hit name	RT	EstConc	Units	Response	--Internal Standard--			
					#	RT	Resp	Conc
