

Data Path : Z:\VOASRV\HPCHEM1\MSVOA V\DATA\VV060620\  
 Data File : VV016635.D  
 Acq On : 07 Jun 2020 11:19  
 Operator : SY/MD  
 Sample : L2862-09DL 50X  
 Misc : 5.0mL/MSVOA V/WATER  
 ALS Vial : 62 Sample Multiplier: 1

Instrument :  
 MSVOA\_V  
 ClientSampled :  
 F9D92DL

Integration Parameters: LSCINT.P

Integrator: RTE  
 Smoothing : OFF  
 Sampling : 1  
 Start Thrs: 0.2  
 Stop Thrs : 0

Filtering: 5  
 Min Area: 0 % of largest Peak  
 Max Peaks: 100  
 Peak Location: TOP

If leading or trailing edge < 100 prefer < Baseline drop else tangent >  
 Peak separation: 5

Method : Z:\VOASRV\HPCHEM1\MSVOA\_V\METHOD\SOMVLM060320WMA.M  
 Title : VOC Analysis

Signal : TIC

peak #	R.T. min	first scan	max scan	last scan	PK TY	peak height	corr. area	corr. % max.	% of total
1	1.315	64	70	80	rVB	189793	190783	13.94%	1.815%
2	1.563	141	147	157	rVB	120912	141698	10.35%	1.348%
3	2.119	310	320	334	rBV	267439	388437	28.38%	3.695%
4	2.592	460	467	479	rBV3	10519	16983	1.24%	0.162%
5	2.666	488	490	494	rVB4	1420	693	0.05%	0.007%
6	2.733	507	511	512	rBV5	886	683	0.05%	0.006%
7	2.843	540	545	547	rVB6	2077	1548	0.11%	0.015%
8	2.894	559	561	567	rVB5	1725	1360	0.10%	0.013%
9	2.920	567	569	572	rBV3	1278	910	0.07%	0.009%
10	2.942	572	576	578	rBV5	910	802	0.06%	0.008%
11	2.984	588	589	597	rBV5	1304	1362	0.10%	0.013%
12	3.023	597	601	603	rBV4	1110	975	0.07%	0.009%
13	3.087	617	621	627	rBV7	851	835	0.06%	0.008%
14	3.183	648	651	655	rBV5	1696	1136	0.08%	0.011%
15	3.216	655	661	666	rBV6	1546	2101	0.15%	0.020%
16	3.267	673	677	679	rBV4	784	653	0.05%	0.006%
17	3.370	706	709	710	rBV3	1275	680	0.05%	0.006%
18	3.405	716	720	721	rBV4	1475	1085	0.08%	0.010%
19	3.643	792	794	797	rVB4	1341	746	0.05%	0.007%
20	3.675	803	804	810	rBV4	1139	992	0.07%	0.009%
21	3.730	818	821	824	rBV3	1542	1206	0.09%	0.011%
22	3.749	824	827	830	rBV4	1326	1218	0.09%	0.012%
23	3.897	861	873	902	rBV	109524	308771	22.56%	2.938%
24	4.267	986	988	991	rVB4	1369	806	0.06%	0.008%
25	4.293	991	996	998	rBV5	1327	969	0.07%	0.009%
26	4.373	1003	1021	1044	rBV	222884	546551	39.94%	5.200%
27	4.553	1075	1077	1080	rBV2	1148	921	0.07%	0.009%
28	4.675	1112	1115	1116	rBV2	2197	1122	0.08%	0.011%
29	4.801	1151	1154	1156	rBV3	1257	691	0.05%	0.007%
30	4.913	1184	1189	1192	rBV6	1443	1030	0.08%	0.010%
31	5.071	1220	1238	1246	rBV2	542008	1368525	100.00%	13.020%
32	5.640	1401	1415	1435	rBV	431252	851443	62.22%	8.100%
33	5.804	1464	1466	1468	rBV3	1408	883	0.06%	0.008%
34	5.891	1489	1493	1494	rBV4	1045	755	0.06%	0.007%

Data Path : Z:\VOASRV\HPCHEM1\MSVOA V\DATA\VV060620\  
 Data File : VV016635.D  
 Acq On : 07 Jun 2020 11:19  
 Operator : SY/MD  
 Sample : L2862-09DL 50X  
 Misc : 5.0mL/MSVOA V/WATER  
 ALS Vial : 62 Sample Multiplier: 1

Instrument :  
 MSVOA\_V  
 ClientSampleId :  
 F9D92DL

## Integration Parameters: LSCINT.P

Integrator: RTE  
 Smoothing : OFF  
 Sampling : 1  
 Start Thrs: 0.2  
 Stop Thrs : 0

Filtering: 5  
 Min Area: 0 % of largest Peak  
 Max Peaks: 100  
 Peak Location: TOP

If leading or trailing edge < 100 prefer < Baseline drop else tangent >  
 Peak separation: 5

Method : Z:\VOASRV\HPCHEM1\MSVOA\_V\METHOD\SOMVLM060320WMA.M  
 Title : VOC Analysis

35	5.900	1494	1496	1497	rVV2	2140	910	0.07%	0.009%
36	5.926	1497	1504	1518	rVB9	9918	22520	1.65%	0.214%
37	6.093	1542	1556	1581	rVV	307158	630658	46.08%	6.000%
38	6.203	1588	1590	1592	rBV3	1498	732	0.05%	0.007%
39	6.592	1704	1711	1714	rBV7	2171	2991	0.22%	0.028%
40	6.688	1740	1741	1746	rBV5	998	625	0.05%	0.006%
41	6.746	1757	1759	1762	rBV3	1558	1019	0.07%	0.010%
42	6.794	1772	1774	1776	rBV3	1151	615	0.04%	0.006%
43	6.939	1812	1819	1820	rBV7	1486	1251	0.09%	0.012%
44	6.965	1823	1827	1828	rVV3	1319	788	0.06%	0.007%
45	7.006	1828	1840	1860	rVV	161490	288948	21.11%	2.749%
46	7.158	1885	1887	1889	rBV2	1255	684	0.05%	0.007%
47	7.338	1931	1943	1959	rVV	628941	1085415	79.31%	10.326%
48	7.592	2019	2022	2025	rVB5	1293	796	0.06%	0.008%
49	7.643	2025	2038	2056	rBV	114222	197673	14.44%	1.881%
50	7.810	2082	2090	2095	rBV	1973	2398	0.18%	0.023%
51	8.016	2151	2154	2158	rVB5	1102	855	0.06%	0.008%
52	8.106	2172	2182	2212	rBV	363888	658634	48.13%	6.266%
53	8.386	2265	2269	2272	rBV5	1127	1172	0.09%	0.011%
54	8.540	2310	2317	2318	rBV7	1270	1326	0.10%	0.013%
55	8.617	2338	2341	2343	rBV4	1813	836	0.06%	0.008%
56	8.691	2362	2364	2367	rBV4	1224	801	0.06%	0.008%
57	8.772	2386	2389	2391	rBV3	1361	714	0.05%	0.007%
58	8.875	2409	2421	2446	rBV	634781	1030894	75.33%	9.807%
59	9.035	2462	2471	2490	rVB	61325	97889	7.15%	0.931%
60	9.283	2544	2548	2550	rBV4	2805	2190	0.16%	0.021%
61	9.469	2601	2606	2608	rBV6	2839	2490	0.18%	0.024%
62	9.694	2674	2676	2679	rBV4	1290	926	0.07%	0.009%
63	9.810	2710	2712	2716	rBV5	1386	1122	0.08%	0.011%
64	9.871	2728	2731	2732	rBV2	1581	866	0.06%	0.008%
65	9.948	2750	2755	2757	rBV5	1761	1521	0.11%	0.014%
66	10.067	2790	2792	2796	rBV5	1091	712	0.05%	0.007%
67	10.154	2817	2819	2824	rVB4	1199	801	0.06%	0.008%
68	10.186	2824	2829	2831	rBV5	1643	1530	0.11%	0.015%
69	10.238	2834	2845	2860	rVB	394607	618881	45.22%	5.888%
70	10.662	2971	2977	2980	rBV7	1566	1533	0.11%	0.015%
71	10.749	2999	3004	3006	rBV5	1796	1714	0.13%	0.016%

Data Path : Z:\VOASRV\HPCHEM1\MSVOA V\DATA\VV060620\  
 Data File : VV016635.D  
 Acq On : 07 Jun 2020 11:19  
 Operator : SY/MD  
 Sample : L2862-09DL 50X  
 Misc : 5.0mL/MSVOA V/WATER  
 ALS Vial : 62 Sample Multiplier: 1

Instrument :  
 MSVOA\_V  
 ClientSampleId :  
 F9D92DL

## Integration Parameters: LSCINT.P

Integrator: RTE  
 Smoothing : OFF Filtering: 5  
 Sampling : 1 Min Area: 0 % of largest Peak  
 Start Thrs: 0.2 Max Peaks: 100  
 Stop Thrs : 0 Peak Location: TOP

If leading or trailing edge < 100 prefer < Baseline drop else tangent >  
 Peak separation: 5

Method : Z:\VOASRV\HPCHEM1\MSVOA\_V\METHOD\SOMVLM060320WMA.M  
 Title : VOC Analysis

72	10.932	3059	3061	3062	rBV2	2163	984	0.07%	0.009%
73	10.971	3070	3073	3076	rBV5	1547	1006	0.07%	0.010%
74	11.038	3089	3094	3095	rBV3	1523	1135	0.08%	0.011%
75	11.122	3117	3120	3125	rBV6	1857	1210	0.09%	0.012%
76	11.270	3153	3166	3185	rBV	607116	949005	69.35%	9.028%
77	11.466	3224	3227	3229	rBV3	1945	1552	0.11%	0.015%
78	11.553	3247	3254	3265	rVB7	6918	11650	0.85%	0.111%
79	11.646	3271	3283	3308	rBV	646411	1014478	74.13%	9.651%
80	11.923	3366	3369	3376	rBV9	1820	1952	0.14%	0.019%
81	12.026	3399	3401	3406	rVB5	1591	1087	0.08%	0.010%
82	12.051	3406	3409	3410	rBV2	1143	630	0.05%	0.006%
83	12.077	3411	3417	3421	rVB9	1344	1523	0.11%	0.014%
84	12.257	3471	3473	3476	rBV3	1135	695	0.05%	0.007%
85	12.408	3516	3520	3523	rBV4	2168	1488	0.11%	0.014%
86	12.489	3543	3545	3548	rBV4	1299	945	0.07%	0.009%
87	12.788	3637	3638	3642	rVB4	1334	664	0.05%	0.006%
88	12.852	3656	3658	3660	rBV3	1689	658	0.05%	0.006%
89	12.907	3669	3675	3680	rBV8	3136	4628	0.34%	0.044%
90	13.106	3734	3737	3739	rBV3	1476	828	0.06%	0.008%
91	13.186	3759	3762	3763	rBV2	1838	1081	0.08%	0.010%
92	13.511	3860	3863	3864	rBV2	1826	964	0.07%	0.009%
93	13.759	3936	3940	3943	rBV6	1476	1219	0.09%	0.012%
94	14.042	4024	4028	4029	rBV4	1144	844	0.06%	0.008%
95	14.177	4068	4070	4073	rVV4	1804	1077	0.08%	0.010%
96	14.238	4086	4089	4092	rBV5	1316	1270	0.09%	0.012%
97	14.450	4151	4155	4158	rBV4	1475	1165	0.09%	0.011%
98	14.736	4242	4244	4247	rBV5	1392	674	0.05%	0.006%
99	14.939	4305	4307	4311	rVB4	1704	946	0.07%	0.009%
100	15.180	4379	4382	4385	rBV5	1754	1142	0.08%	0.011%

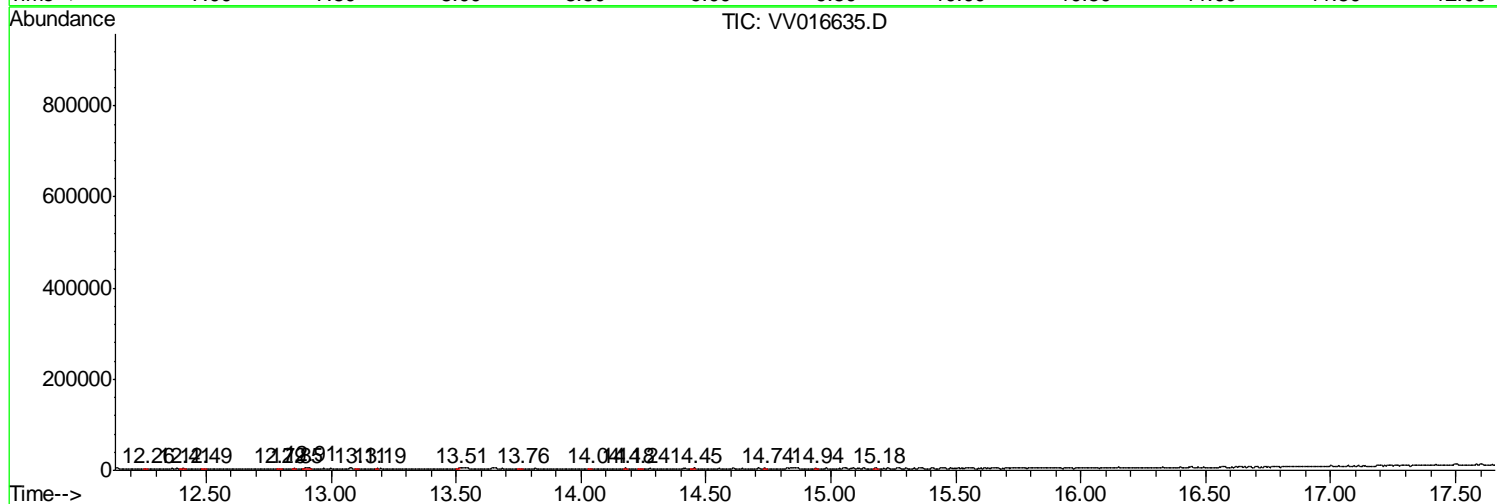
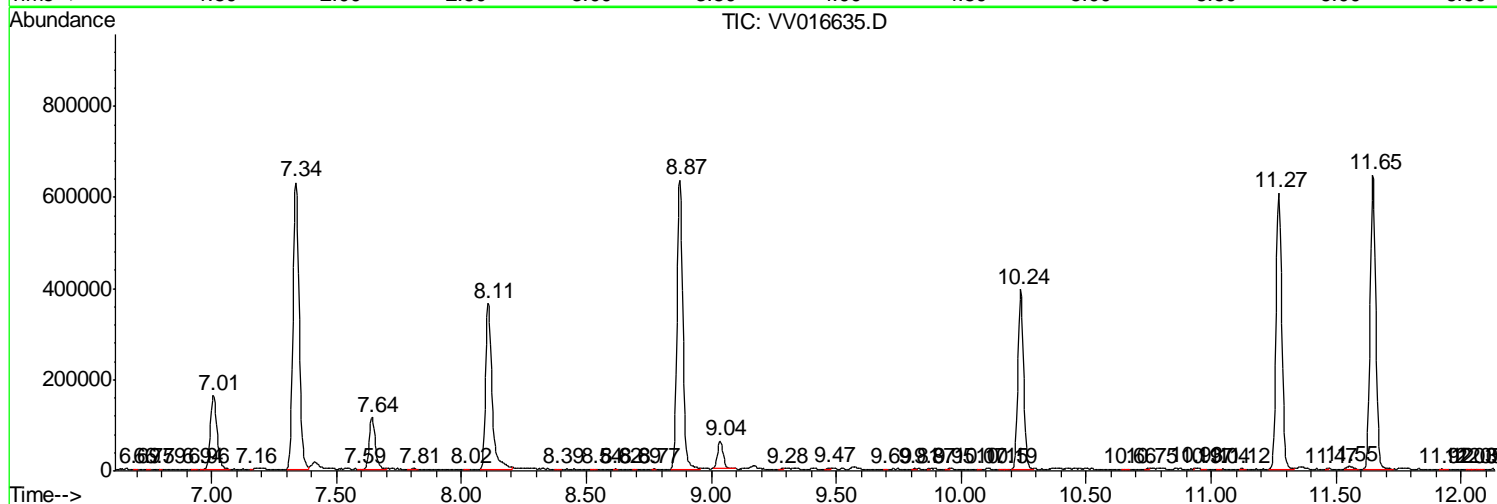
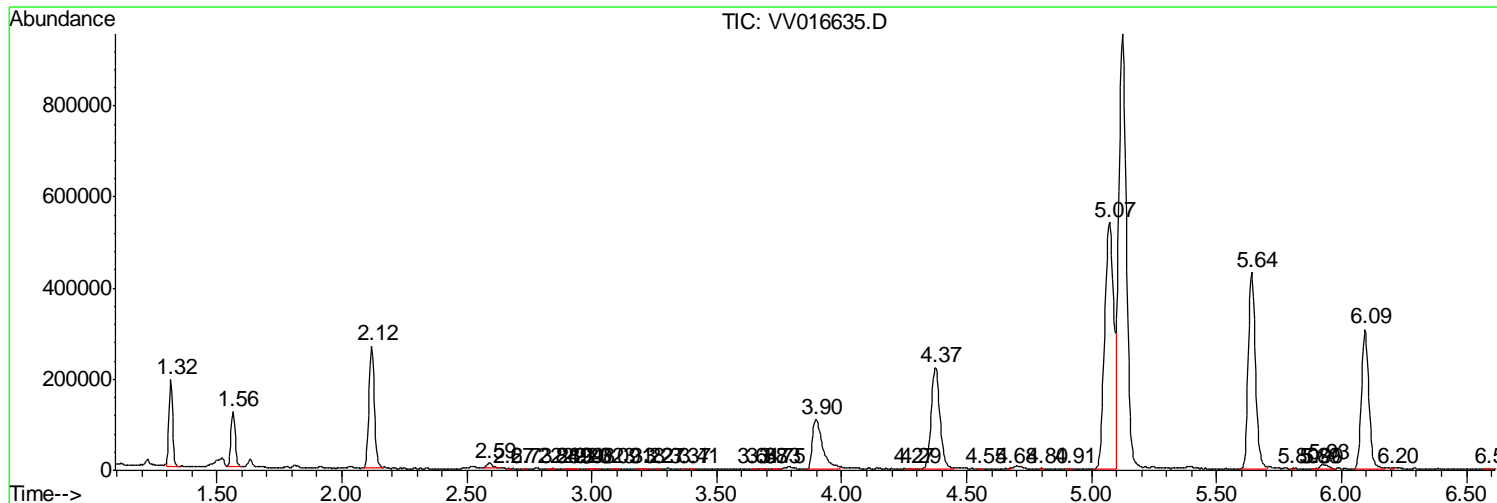
Sum of corrected areas: 10511283

Data Path : Z:\VOASRV\HPCHEM1\MSVOA V\DATA\VV060620\  
 Data File : VV016635.D  
 Acq On : 07 Jun 2020 11:19  
 Operator : SY/MD  
 Sample : L2862-09DL 50X  
 Misc : 5.0mL/MSVOA V/WATER  
 ALS Vial : 62 Sample Multiplier: 1

Instrument :  
 MSVOA\_V  
 Client Sampled :  
 F9D92DL

Quant Method : Z:\VOASRV\HPCHEM1\MSVOA\_V\METHOD\SOMVLM060320WMA.M  
 Quant Title : VOC Analysis

TIC Library : C:\DATABASE\NIST11.L  
 TIC Integration Parameters: LSCINT.P



Data Path : Z:\VOASRV\HPCHEM1\MSVOA\_V\DATA\VV060620\  
Data File : VV016635.D  
Acq On : 07 Jun 2020 11:19  
Operator : SY/MD  
Sample : L2862-09DL 50X  
Misc : 5.0mL/MSVOA\_V/WATER  
ALS Vial : 62 Sample Multiplier: 1

Instrument :  
MSVOA\_V  
ClientSampleId :  
F9D92DL

Quant Method : Z:\VOASRV\HPCHEM1\MSVOA\_V\METHOD\SOMVLM060320WMA.M  
Quant Title : VOC Analysis

TIC Library : C:\DATABASE\NIST11.L  
TIC Integration Parameters: LSCINT.P

No Library Search Compounds Detected

\*\*\*\*\*

Data Path : Z:\VOASRV\HPCHEM1\MSVOA\_V\DATA\VV060620\  
Data File : VV016635.D  
Acq On : 07 Jun 2020 11:19  
Operator : SY/MD  
Sample : L2862-09DL 50X  
Misc : 5.0mL/MSVOA\_V/WATER  
ALS Vial : 62 Sample Multiplier: 1

Instrument :  
MSVOA\_V  
ClientSampleId :  
F9D92DL

Quant Method : Z:\VOASRV\HPCHEM1\MSVOA\_V\METHOD\SOMVLM060320WMA.M  
Quant Title : VOC Analysis

TIC Library : C:\DATABASE\NIST11.L  
TIC Integration Parameters: LSCINT.P

TIC Top Hit name	RT	EstConc	Units	Response	--Internal Standard--			
					#	RT	Resp	Conc

---