

Data Path : Z:\voasrv\HPCHEM1\MSVOA_V\Data\VV060623\
 Data File : VV031371.D
 Acq On : 06 Jun 2023 13:34
 Operator : SY/MD
 Sample : 03000-04DL 100X
 Misc : 25.0mL/MSVOA_V/WATER
 ALS Vial : 12 Sample Multiplier: 1

Instrument :
 MSVOA_V
 ClientSampleId :
 F6C28DL

Quant Time: Jun 07 02:02:12 2023
 Quant Method : Z:\voasrv\HPCHEM1\MSVOA_V\Method\SFAMVTR060123WMA.M
 Quant Title : TRACE VOA SFAM1.0
 QLast Update : Wed Jun 07 01:59:39 2023
 Response via : Initial Calibration

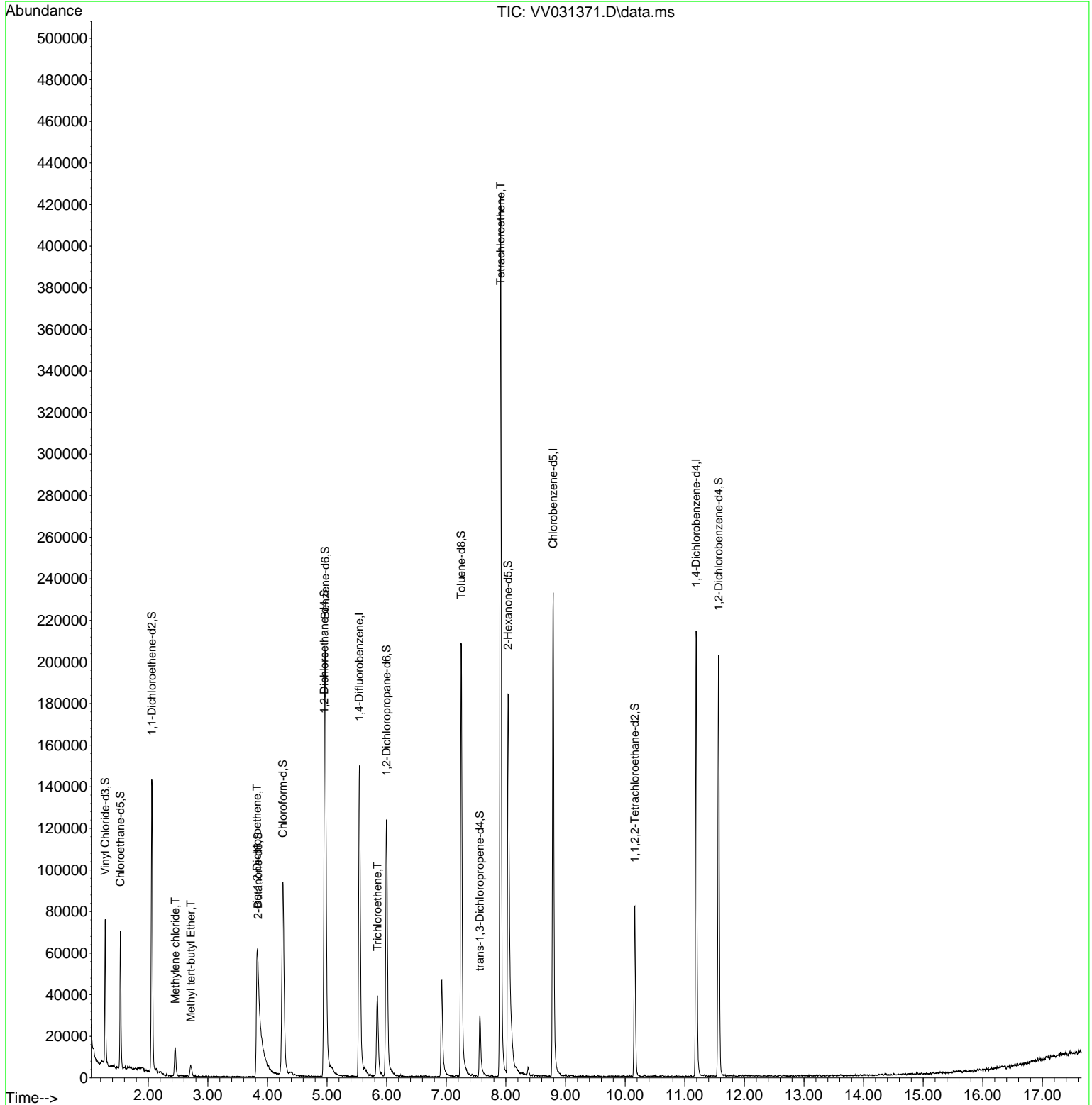
Compound	R.T.	QIon	Response	Conc	Units	Dev(Min)
Internal Standards						
1) 1,4-Difluorobenzene	5.542	114	124326	5.000	ug/L	0.00
28) Chlorobenzene-d5	8.792	117	124959	5.000	ug/L	0.00
58) 1,4-Dichlorobenzene-d4	11.191	152	56590	5.000	ug/L	0.00
System Monitoring Compounds						
4) Vinyl Chloride-d3	1.278	65	44900	3.550	ug/L	0.00
Spiked Amount	5.000	Range 40 - 130	Recovery	=	71.000%	
7) Chloroethane-d5	1.532	69	43053	4.030	ug/L	0.00
Spiked Amount	5.000	Range 65 - 130	Recovery	=	80.600%	
11) 1,1-Dichloroethene-d2	2.060	65	24971	4.067	ug/L	0.00
Spiked Amount	5.000	Range 60 - 125	Recovery	=	81.400%	
20) 2-Butanone-d5	3.841	46	109052	37.255	ug/L	0.02
Spiked Amount	50.000	Range 40 - 130	Recovery	=	74.520%	
24) Chloroform-d	4.259	84	103216	4.854	ug/L	0.00
Spiked Amount	5.000	Range 70 - 125	Recovery	=	97.000%	
26) 1,2-Dichloroethane-d4	4.953	65	52802	4.630	ug/L	0.00
Spiked Amount	5.000	Range 70 - 130	Recovery	=	92.600%	
32) Benzene-d6	4.969	84	177078	4.661	ug/L	0.00
Spiked Amount	5.000	Range 70 - 125	Recovery	=	93.200%	
36) 1,2-Dichloropropane-d6	5.995	67	61365	4.783	ug/L	0.00
Spiked Amount	5.000	Range 60 - 140	Recovery	=	95.600%	
41) Toluene-d8	7.249	98	144859	4.061	ug/L	0.00
Spiked Amount	5.000	Range 70 - 130	Recovery	=	81.200%	
43) trans-1,3-Dichloroprop...	7.564	79	19024	4.072	ug/L	0.00
Spiked Amount	5.000	Range 55 - 130	Recovery	=	81.400%	
46) 2-Hexanone-d5	8.037	63	69368	36.965	ug/L	0.00
Spiked Amount	50.000	Range 45 - 130	Recovery	=	73.940%	
56) 1,1,2,2-Tetrachloroeth...	10.162	84	39134	4.012	ug/L	0.00
Spiked Amount	5.000	Range 65 - 120	Recovery	=	80.200%	
66) 1,2-Dichlorobenzene-d4	11.567	152	52008	4.873	ug/L	0.00
Spiked Amount	5.000	Range 80 - 120	Recovery	=	97.400%	
Target Compounds						
16) Methylene chloride	2.452	84	5355	0.379	ug/L	87
17) Methyl tert-butyl Ether	2.716	73	4437	0.168	ug/L #	87
22) cis-1,2-Dichloroethene	3.825	96	16612	1.488	ug/L	95
34) Trichloroethene	5.844	95	13273	1.105	ug/L	94
47) Tetrachloroethene	7.911	164	93363	9.975	ug/L	98

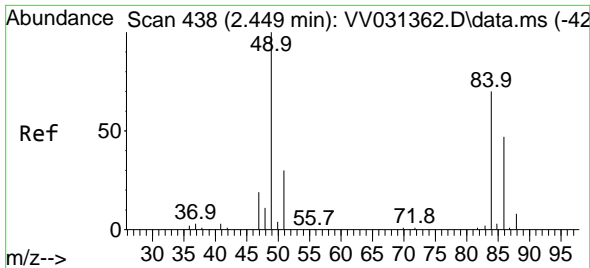
(#) = qualifier out of range (m) = manual integration (+) = signals summed

Data Path : Z:\voasrv\HPCHEM1\MSVOA_V\Data\VV060623\
 Data File : VV031371.D
 Acq On : 06 Jun 2023 13:34
 Operator : SY/MD
 Sample : 03000-04DL 100X
 Misc : 25.0mL/MSVOA_V/WATER
 ALS Vial : 12 Sample Multiplier: 1

Instrument :
 MSVOA_V
 ClientSampleId :
 F6C28DL

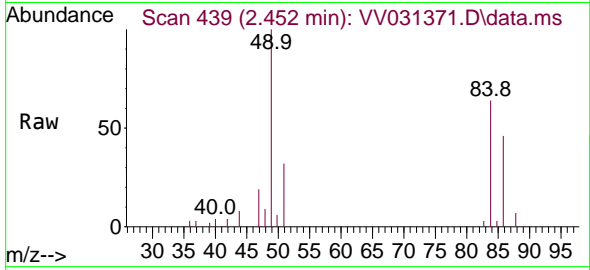
Quant Time: Jun 07 02:02:12 2023
 Quant Method : Z:\voasrv\HPCHEM1\MSVOA_V\Method\SFAMVTR060123WMA.M
 Quant Title : TRACE VOA SFAM1.0
 QLast Update : Wed Jun 07 01:59:39 2023
 Response via : Initial Calibration





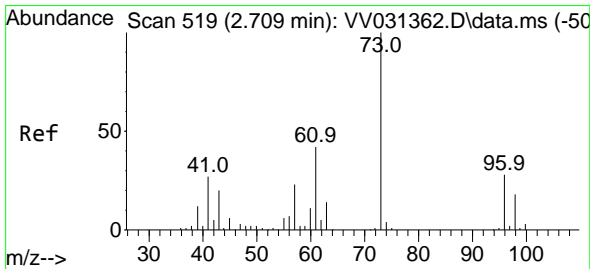
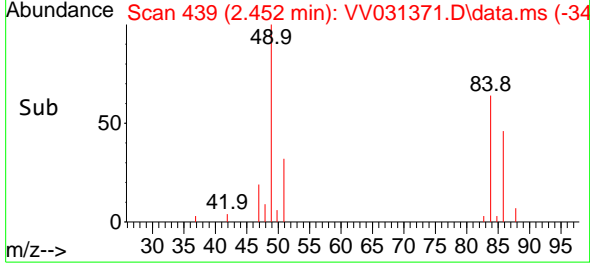
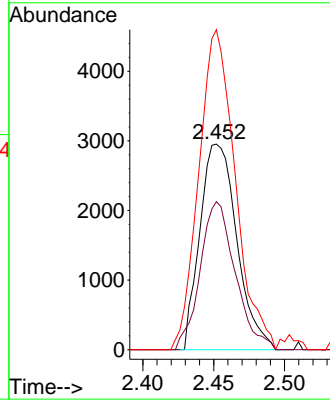
#16
 Methylene chloride
 Concen: 0.379 ug/L
 RT: 2.452 min Scan# 416
 Delta R.T. 0.003 min
 Lab File: VV031371.D
 Acq: 06 Jun 2023 13:34

Instrument :
 MSVOA_V
 ClientSampleId :
 F6C28DL



Tgt Ion: 84 Resp: 5355

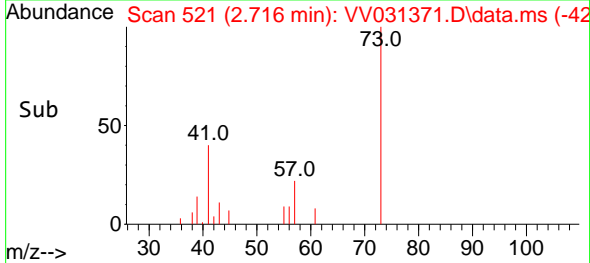
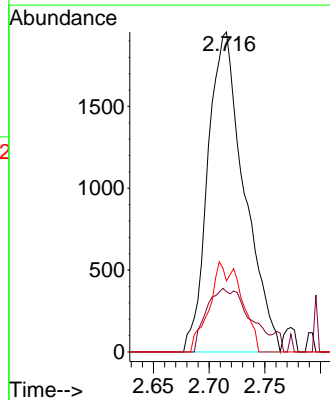
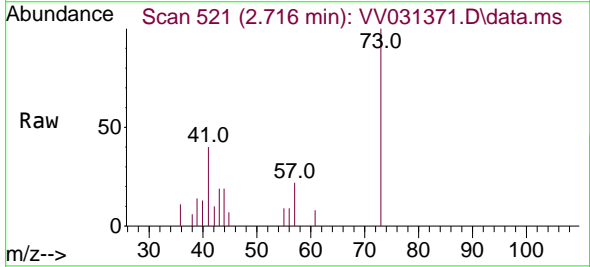
Ion	Ratio	Lower	Upper
84	100		
86	72.0	46.7	86.7
49	164.4	101.6	188.8

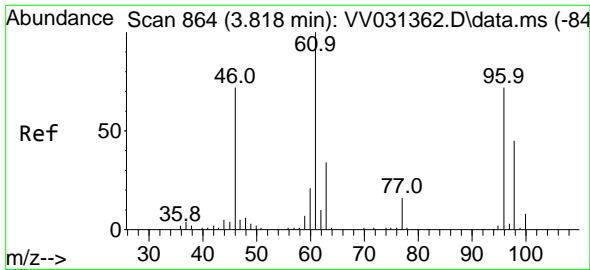


#17
 Methyl tert-butyl Ether
 Concen: 0.168 ug/L
 RT: 2.716 min Scan# 521
 Delta R.T. 0.006 min
 Lab File: VV031371.D
 Acq: 06 Jun 2023 13:34

Tgt Ion: 73 Resp: 4437

Ion	Ratio	Lower	Upper
73	100		
43	23.5	17.8	26.8
57	13.5	19.8	29.8

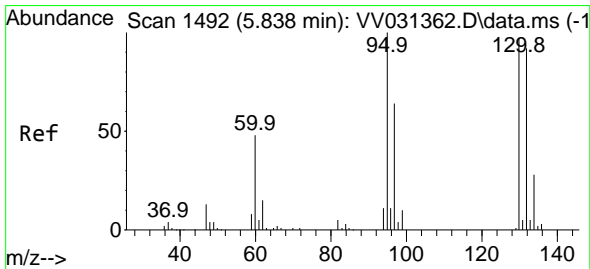
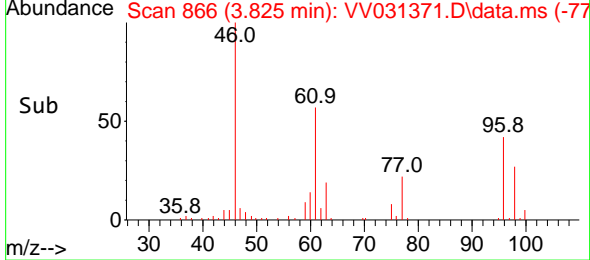
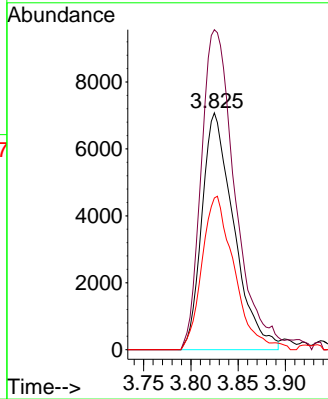
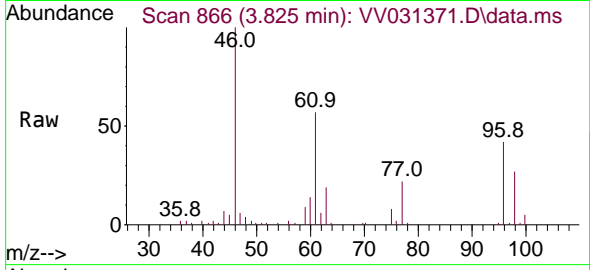




#22
 cis-1,2-Dichloroethene
 Concen: 1.488 ug/L
 RT: 3.825 min Scan# 80
 Delta R.T. 0.006 min
 Lab File: VV031371.D
 Acq: 06 Jun 2023 13:34

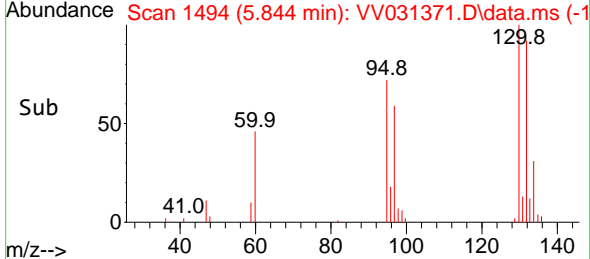
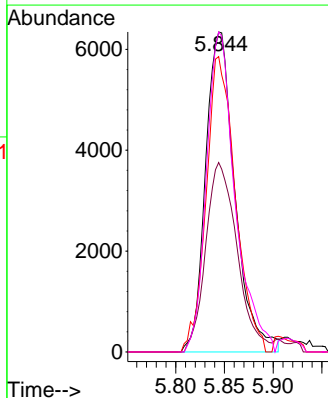
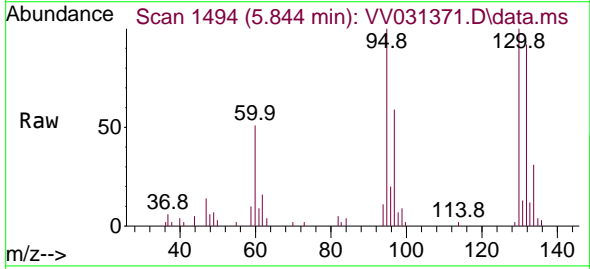
Instrument :
 MSVOA_V
 ClientSampleId :
 F6C28DL

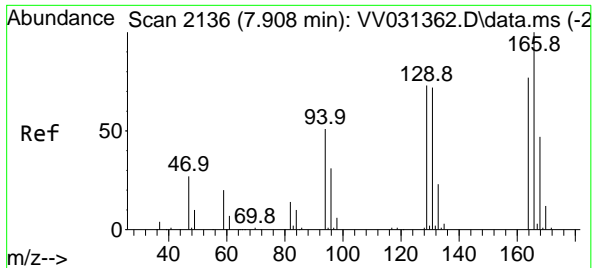
Tgt Ion: 96 Resp: 16612
 Ion Ratio Lower Upper
 96 100
 61 135.1 100.8 187.2
 98 64.0 45.1 83.9



#34
 Trichloroethene
 Concen: 1.105 ug/L
 RT: 5.844 min Scan# 1494
 Delta R.T. 0.006 min
 Lab File: VV031371.D
 Acq: 06 Jun 2023 13:34

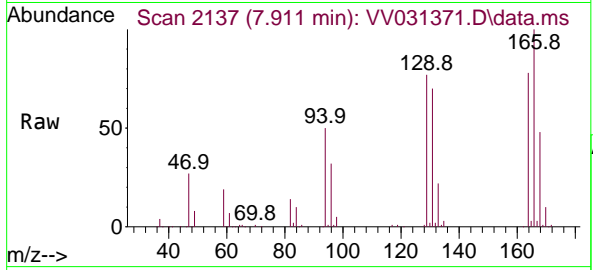
Tgt Ion: 95 Resp: 13273
 Ion Ratio Lower Upper
 95 100
 97 59.2 46.1 85.5
 132 92.3 64.5 119.9
 130 100.0 63.1 117.1





#47
 Tetrachloroethene
 Concen: 9.975 ug/L
 RT: 7.911 min Scan# 2137
 Delta R.T. 0.003 min
 Lab File: VV031371.D
 Acq: 06 Jun 2023 13:34

Instrument : MSVOA_V
 ClientSampleId : F6C28DL



Tgt Ion:164 Resp: 93363

Ion	Ratio	Lower	Upper
164	100		
129	98.8	66.0	122.6
131	90.2	65.3	121.3
166	128.7	90.1	167.3

