

Data Path : Z:\voasrv\HPCHEM1\MSVOA_V\DATA\VV060625\
 Data File : VV038760.D
 Acq On : 06 Jun 2025 10:55
 Operator : SY/MD
 Sample : Q2117-02
 Misc : 25.0mL/MSVOA_V/WATER
 ALS Vial : 4 Sample Multiplier: 1

Instrument :
 MSVOA_V
 ClientSampleId :
 MDL-WATER-QT2-2025-04

Quant Time: Jun 13 10:57:49 2025
 Quant Method : Z:\voasrv\HPCHEM1\MSVOA_V\Method\SFAMVTR060425WMA.M
 Quant Title : TRACE VOA SFAM1.0
 QLast Update : Fri Jun 13 10:50:34 2025
 Response via : Initial Calibration

Compound	R.T.	QIon	Response	Conc	Units	Dev(Min)
Internal Standards						
1) 1,4-Difluorobenzene	5.532	114	219134	5.000	ug/L	0.00
28) Chlorobenzene-d5	8.776	117	232144	5.000	ug/L	0.00
58) 1,4-Dichlorobenzene-d4	11.175	152	97656	5.000	ug/L	0.00
System Monitoring Compounds						
4) Vinyl Chloride-d3	1.288	65	132639	4.323	ug/L	0.00
Spiked Amount	5.000	Range 40 - 130	Recovery	=	86.400%	
7) Chloroethane-d5	1.542	69	100849	4.644	ug/L	0.00
Spiked Amount	5.000	Range 65 - 130	Recovery	=	92.800%	
11) 1,1-Dichloroethene-d2	2.066	65	51098	4.113	ug/L	0.00
Spiked Amount	5.000	Range 60 - 125	Recovery	=	82.200%	
20) 2-Butanone-d5	3.789	46	192476	48.780	ug/L	0.00
Spiked Amount	50.000	Range 40 - 130	Recovery	=	97.560%	
24) Chloroform-d	4.249	84	204376	4.679	ug/L	0.00
Spiked Amount	5.000	Range 70 - 125	Recovery	=	93.600%	
26) 1,2-Dichloroethane-d4	4.940	65	99860	5.018	ug/L	0.00
Spiked Amount	5.000	Range 70 - 130	Recovery	=	100.400%	
32) Benzene-d6	4.957	84	370511	4.437	ug/L	0.00
Spiked Amount	5.000	Range 70 - 125	Recovery	=	88.800%	
36) 1,2-Dichloropropane-d6	5.982	67	126738	4.880	ug/L	0.00
Spiked Amount	5.000	Range 60 - 140	Recovery	=	97.600%	
41) Toluene-d8	7.236	98	280519	3.853	ug/L	0.00
Spiked Amount	5.000	Range 70 - 130	Recovery	=	77.000%	
43) trans-1,3-Dichloroprop...	7.551	79	38826	4.314	ug/L	0.00
Spiked Amount	5.000	Range 55 - 130	Recovery	=	86.200%	
46) 2-Hexanone-d5	8.014	63	139122	45.968	ug/L	0.00
Spiked Amount	50.000	Range 45 - 130	Recovery	=	91.940%	
56) 1,1,2,2-Tetrachloroeth...	10.143	84	83925	4.445	ug/L	0.00
Spiked Amount	5.000	Range 65 - 120	Recovery	=	89.000%	
66) 1,2-Dichlorobenzene-d4	11.551	152	89432	4.952	ug/L	0.00
Spiked Amount	5.000	Range 80 - 120	Recovery	=	99.000%	
Target Compounds						
2) Dichlorodifluoromethane	1.117	85	7534	0.257	ug/L	94
5) Vinyl chloride	1.291	62	7943	0.248	ug/L #	78
6) Bromomethane	1.497	94	3858	0.241	ug/L	85
8) Chloroethane	1.555	64	5207	0.269	ug/L	100
9) Trichlorofluoromethane	1.722	101	10603	0.254	ug/L	94
10) 1,1,2-Trichloro-1,2,2-...	2.072	101	7493	0.315	ug/L #	84
12) 1,1-Dichloroethene	2.072	96	7259	0.324	ug/L #	1
14) Carbon disulfide	2.246	76	18118	0.238	ug/L #	94
16) Methylene chloride	2.455	84	6322	0.251	ug/L	88
17) Methyl tert-butyl Ether	2.709	73	8279	0.203	ug/L	93
18) trans-1,2-Dichloroethene	2.706	96	5065	0.227	ug/L	90
19) 1,1-Dichloroethane	3.117	63	10360	0.232	ug/L	95
23) Bromochloromethane	4.169	128	1214	0.121	ug/L #	67
25) Chloroform	4.272	83	12816	0.289	ug/L	95
29) 1,1,1-Trichloroethane	4.516	97	9025	0.232	ug/L #	84
30) Cyclohexane	4.584	56	7981	0.221	ug/L #	68
31) Carbon tetrachloride	4.731	117	7172	0.209	ug/L	90
33) Benzene	5.014	78	16934	0.185	ug/L	100
34) Trichloroethene	5.850	95	5036	0.216	ug/L	83

Data Path : Z:\voasrv\HPCHEM1\MSVOA_V\DATA\VV060625\
 Data File : VV038760.D
 Acq On : 06 Jun 2025 10:55
 Operator : SY/MD
 Sample : Q2117-02
 Misc : 25.0mL/MSVOA_V/WATER
 ALS Vial : 4 Sample Multiplier: 1

Instrument :
 MSVOA_V
 ClientSampleId :
 MDL-WATER-QT2-2025-04

Quant Time: Jun 13 10:57:49 2025
 Quant Method : Z:\voasrv\HPCHEM1\MSVOA_V\Method\SFAMVTR060425WMA.M
 Quant Title : TRACE VOA SFAM1.0
 QLast Update : Fri Jun 13 10:50:34 2025
 Response via : Initial Calibration

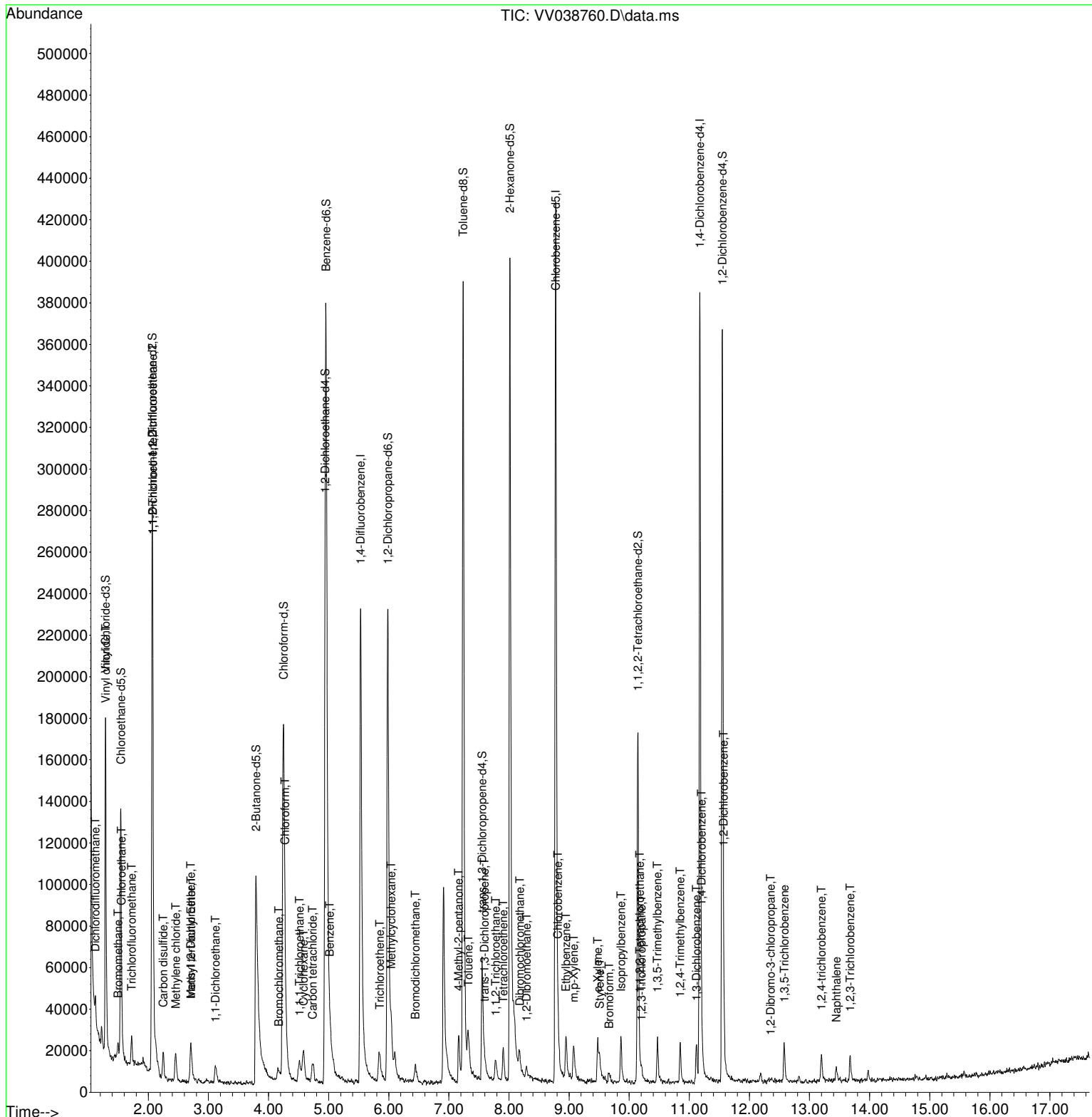
Compound	R.T.	QIon	Response	Conc	Units	Dev(Min)
35) Methylcyclohexane	6.040	83	8123	0.221	ug/L #	91
38) Bromodichloromethane	6.442	83	7064	0.225	ug/L	97
40) 4-Methyl-2-pentanone	7.162	43	16608	1.508	ug/L #	85
42) Toluene	7.320	91	17878	0.193	ug/L	84
44) trans-1,3-Dichloropropene	7.590	75	5690	0.211	ug/L	84
45) 1,1,2-Trichloroethane	7.776	97	3873	0.227	ug/L	92
47) Tetrachloroethene	7.905	164	3636	0.202	ug/L	85
49) Dibromochloromethane	8.178	129	4878	0.257	ug/L	94
50) 1,2-Dibromoethane	8.291	107	3382	0.228	ug/L #	97
51) Chlorobenzene	8.812	112	12511	0.208	ug/L	94
52) Ethylbenzene	8.947	91	17750	0.188	ug/L	89
53) m,p-Xylene	9.079	106	6152	0.172	ug/L	81
54) o-Xylene	9.477	106	5296	0.156	ug/L	96
55) Styrene	9.506	104	7822	0.135	ug/L	97
57) 1,1,2,2-Tetrachloroethane	10.172	83	5096	0.260	ug/L #	93
59) Bromoform	9.667	173	2228	0.291	ug/L #	57
60) Isopropylbenzene	9.863	105	14563	0.201	ug/L #	95
61) 1,2,3-Trichloropropane	10.204	75	2669	0.257	ug/L	94
62) 1,3,5-Trimethylbenzene	10.471	105	10516	0.189	ug/L	99
63) 1,2,4-Trimethylbenzene	10.847	105	9925	0.178	ug/L	95
64) 1,3-Dichlorobenzene	11.117	146	7664	0.220	ug/L	98
65) 1,4-Dichlorobenzene	11.201	146	8844	0.241	ug/L	97
67) 1,2-Dichlorobenzene	11.570	146	8233	0.257	ug/L	95
68) 1,2-Dibromo-3-chloropr...	12.352	75	392	0.177	ug/L #	32
69) 1,3,5-Trichlorobenzene	12.580	180	4875	0.215	ug/L	97
70) 1,2,4-trichlorobenzene	13.197	180	3976	0.223	ug/L	93
71) Naphthalene	13.445	128	5086	0.177	ug/L	96
72) 1,2,3-Trichlorobenzene	13.673	180	3533	0.217	ug/L	93

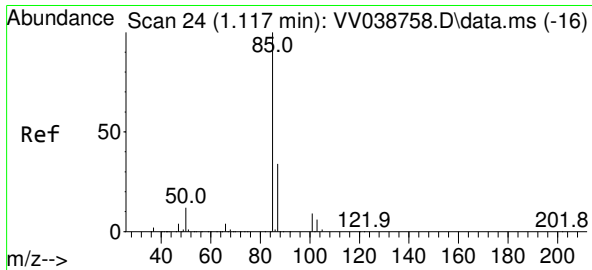
(#) = qualifier out of range (m) = manual integration (+) = signals summed

Data Path : Z:\voasrv\HPCHEM1\MSVOA_V\DATA\VV060625\
 Data File : VV038760.D
 Acq On : 06 Jun 2025 10:55
 Operator : SY/MD
 Sample : Q2117-02
 Misc : 25.0mL/MSVOA_V/WATER
 ALS Vial : 4 Sample Multiplier: 1

Instrument :
 MSVOA_V
 ClientSampleId :
 MDL-WATER-QT2-2025-04

Quant Time: Jun 13 10:57:49 2025
 Quant Method : Z:\voasrv\HPCHEM1\MSVOA_V\Method\SFAMVTR060425WMA.M
 Quant Title : TRACE VOA SFAM1.0
 QLast Update : Fri Jun 13 10:50:34 2025
 Response via : Initial Calibration

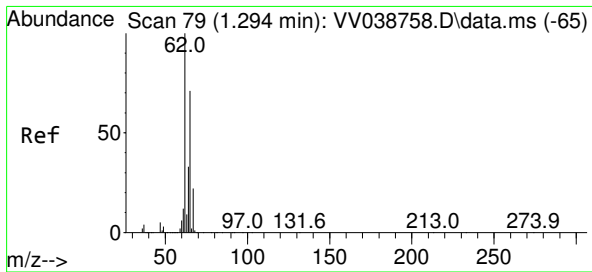
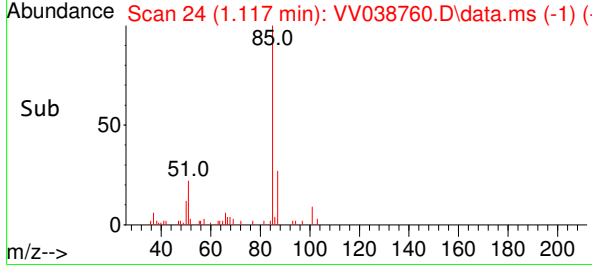
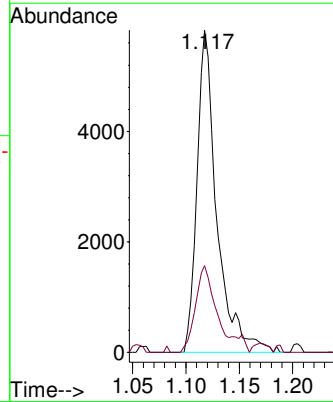
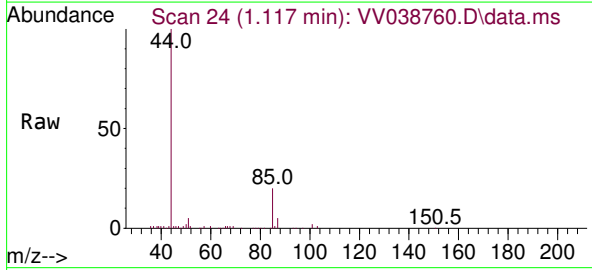




#2
 Dichlorodifluoromethane
 Concen: 0.257 ug/L
 RT: 1.117 min Scan# 2
 Delta R.T. -0.000 min
 Lab File: VV038760.D
 Acq: 06 Jun 2025 10:55

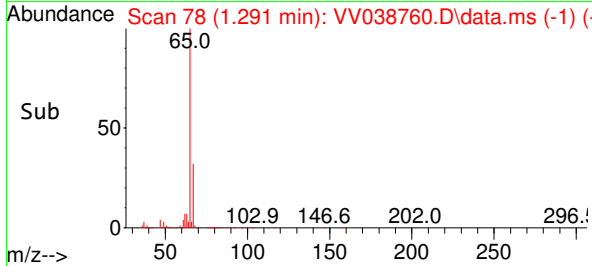
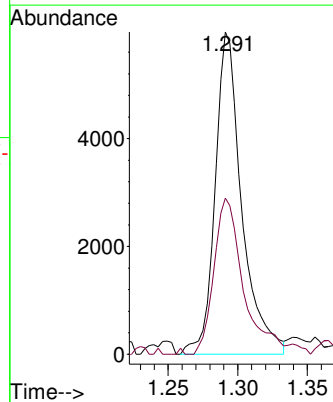
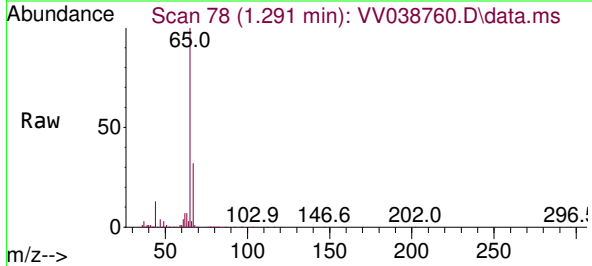
Instrument : MSVOA_V
 ClientSampleId : MDL-WATER-QT2-2025-04

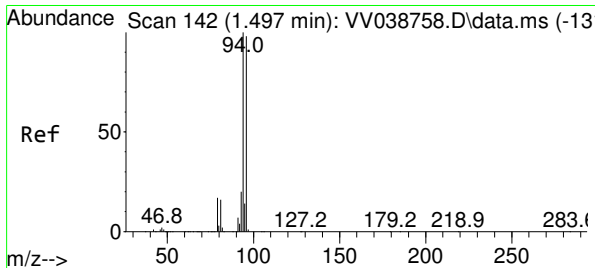
Tgt Ion: 85 Resp: 7534
 Ion Ratio Lower Upper
 85 100
 87 28.3 25.5 38.3



#5
 Vinyl chloride
 Concen: 0.248 ug/L
 RT: 1.291 min Scan# 78
 Delta R.T. -0.003 min
 Lab File: VV038760.D
 Acq: 06 Jun 2025 10:55

Tgt Ion: 62 Resp: 7943
 Ion Ratio Lower Upper
 62 100
 64 48.4 25.0 46.4#

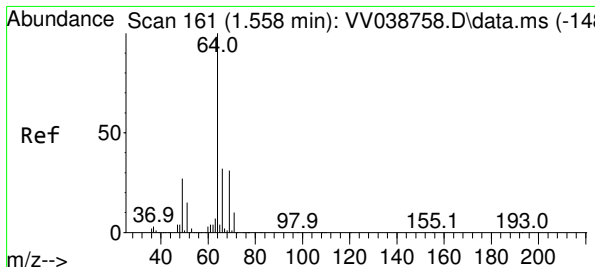
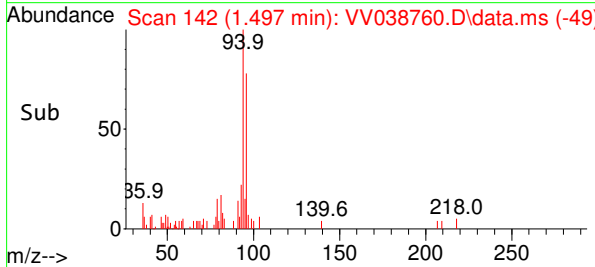
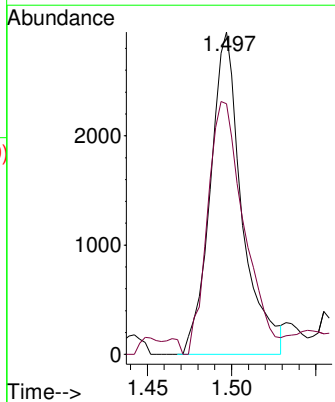
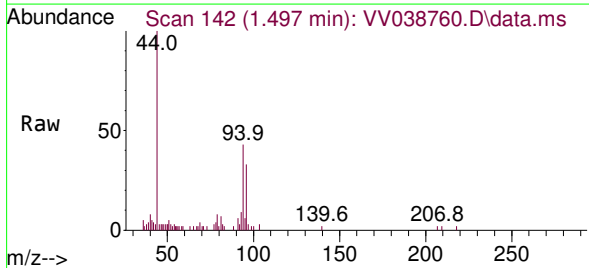




#6
 Bromomethane
 Concen: 0.241 ug/L
 RT: 1.497 min Scan# 1
 Delta R.T. -0.000 min
 Lab File: VV038760.D
 Acq: 06 Jun 2025 10:55

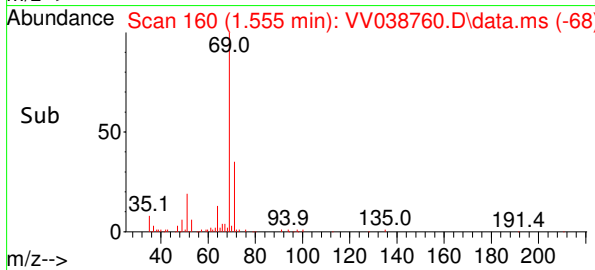
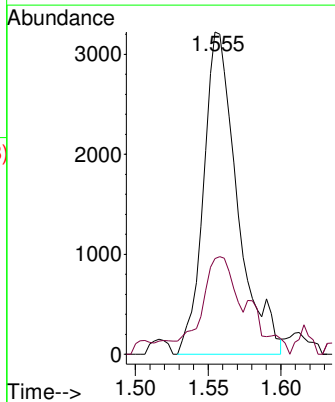
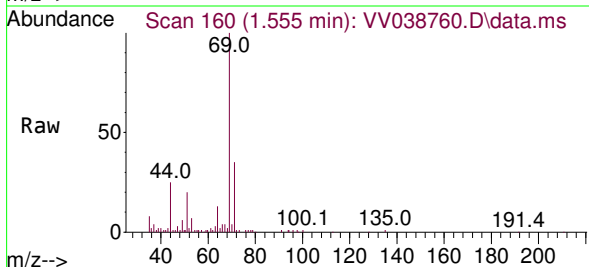
Instrument : MSVOA_V
 ClientSampleId : MDL-WATER-QT2-2025-04

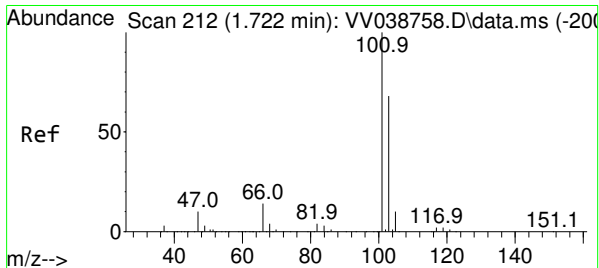
Tgt Ion: 94 Resp: 3858
 Ion Ratio Lower Upper
 94 100
 96 77.7 64.3 119.3



#8
 Chloroethane
 Concen: 0.269 ug/L
 RT: 1.555 min Scan# 160
 Delta R.T. -0.003 min
 Lab File: VV038760.D
 Acq: 06 Jun 2025 10:55

Tgt Ion: 64 Resp: 5207
 Ion Ratio Lower Upper
 64 100
 66 29.7 20.9 38.7

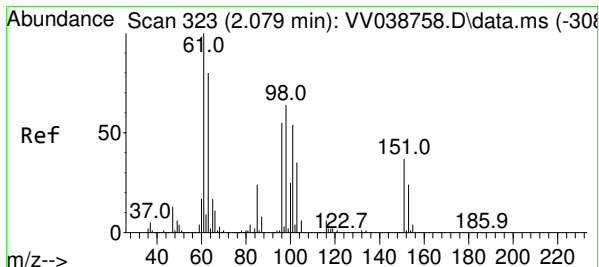
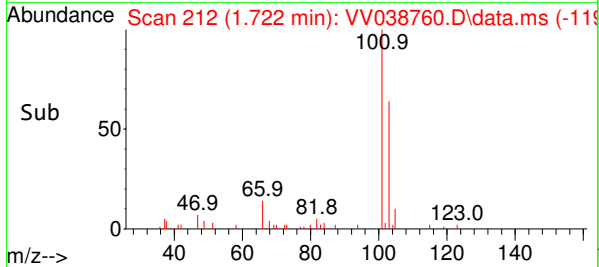
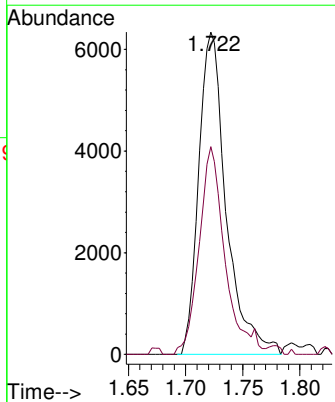
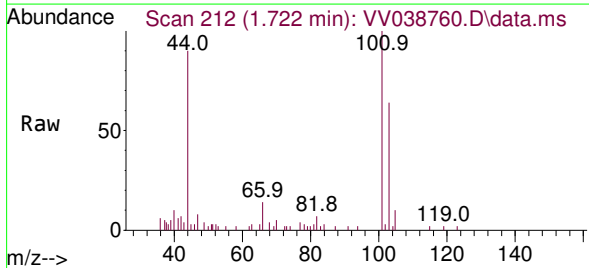




#9
 Trichlorofluoromethane
 Concen: 0.254 ug/L
 RT: 1.722 min Scan# 212
 Delta R.T. -0.000 min
 Lab File: VV038760.D
 Acq: 06 Jun 2025 10:55

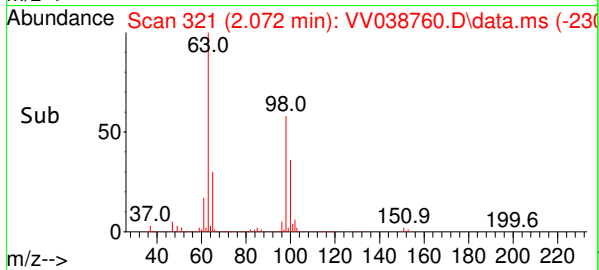
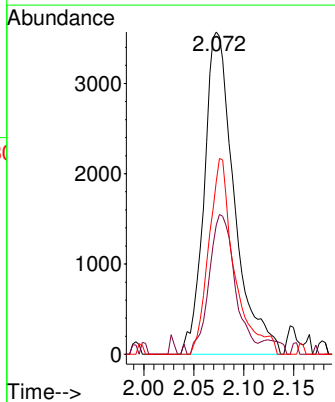
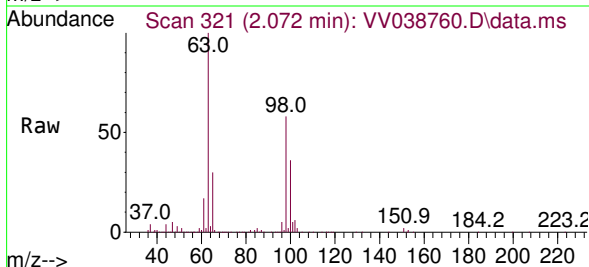
Instrument : MSVOA_V
 ClientSampleId : MDL-WATER-QT2-2025-04

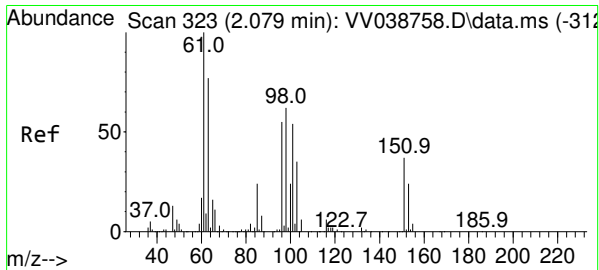
Tgt Ion:101 Resp: 10603
 Ion Ratio Lower Upper
 101 100
 103 60.8 52.4 78.6



#10
 1,1,2-Trichloro-1,2,2-trifluoroethane
 Concen: 0.315 ug/L
 RT: 2.072 min Scan# 321
 Delta R.T. -0.006 min
 Lab File: VV038760.D
 Acq: 06 Jun 2025 10:55

Tgt Ion:101 Resp: 7493
 Ion Ratio Lower Upper
 101 100
 85 37.6 35.0 52.4
 151 51.9 55.1 82.7#

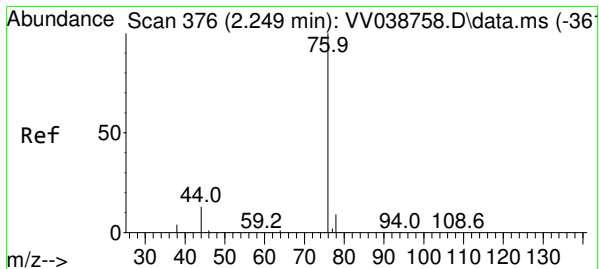
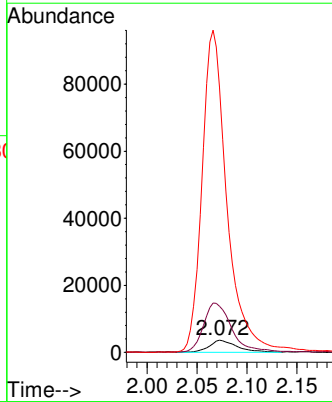
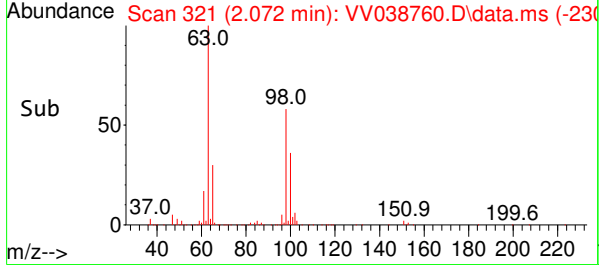
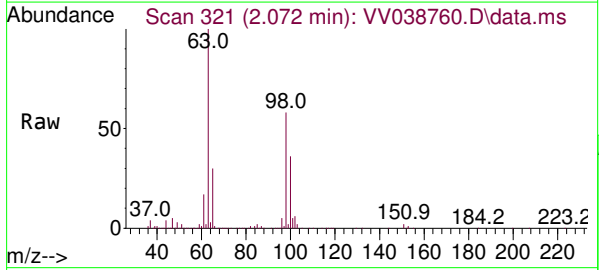




#12
 1,1-Dichloroethene
 Concen: 0.324 ug/L
 RT: 2.072 min Scan# 315
 Delta R.T. -0.006 min
 Lab File: VV038760.D
 Acq: 06 Jun 2025 10:55

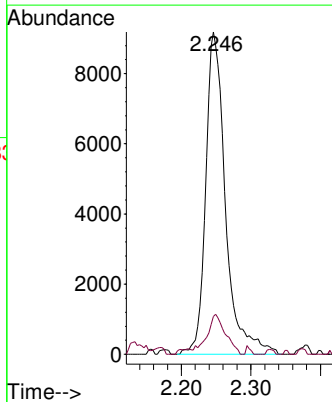
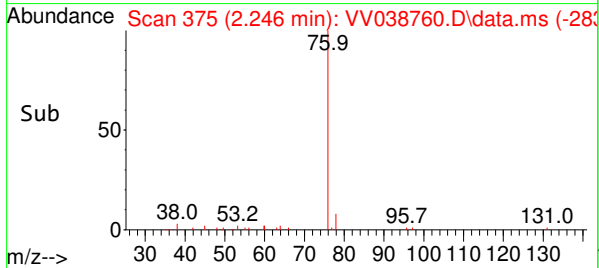
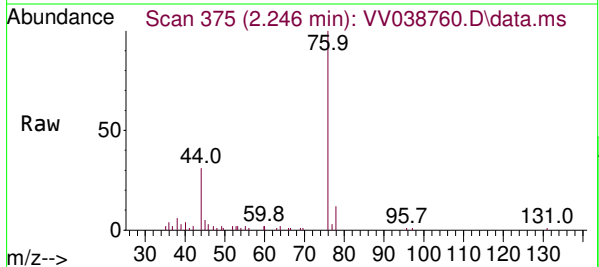
Instrument : MSVOA_V
 ClientSampleId : MDL-WATER-QT2-2025-04

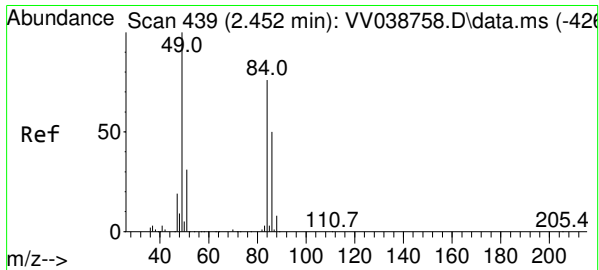
Tgt Ion: 96 Resp: 7259
 Ion Ratio Lower Upper
 96 100
 61 374.0 122.8 228.1#
 63 2153.9 92.0 170.8#



#14
 Carbon disulfide
 Concen: 0.238 ug/L
 RT: 2.246 min Scan# 375
 Delta R.T. -0.003 min
 Lab File: VV038760.D
 Acq: 06 Jun 2025 10:55

Tgt Ion: 76 Resp: 18118
 Ion Ratio Lower Upper
 76 100
 78 11.7 7.5 11.3#

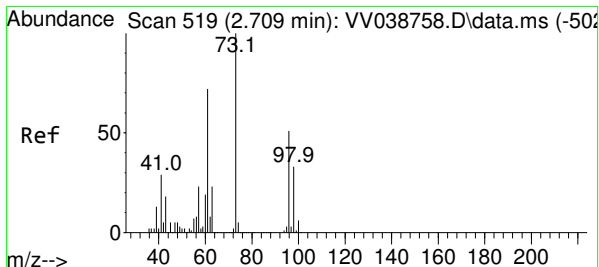
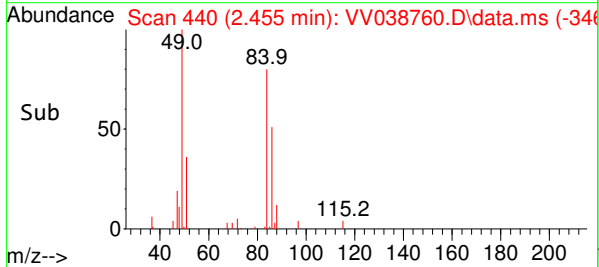
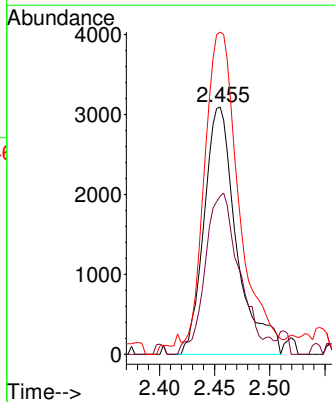
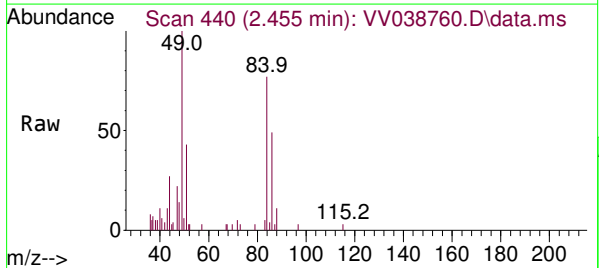




#16
 Methylene chloride
 Concen: 0.251 ug/L
 RT: 2.455 min Scan# 4
 Delta R.T. 0.003 min
 Lab File: VV038760.D
 Acq: 06 Jun 2025 10:55

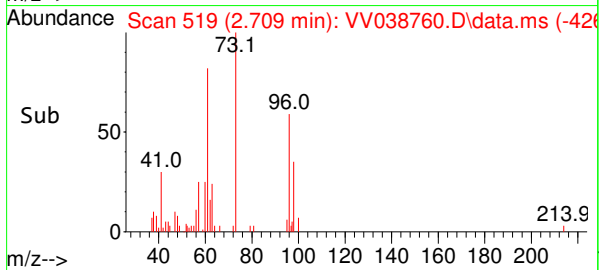
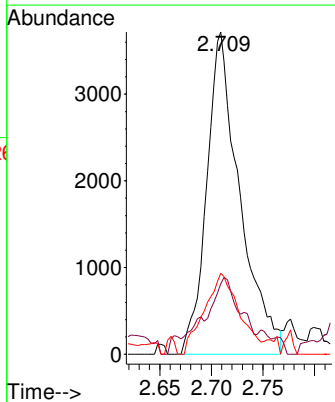
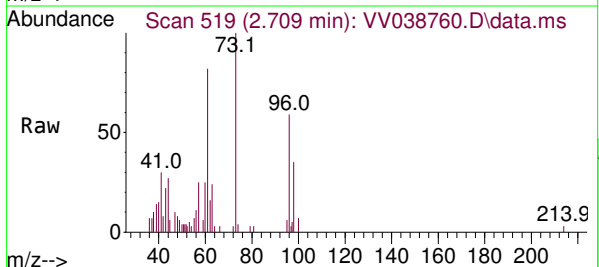
Instrument : MSVOA_V
 ClientSampleId : MDL-WATER-QT2-2025-04

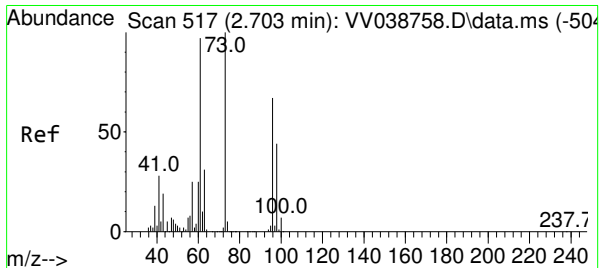
Tgt Ion	Resp	Lower	Upper
84	6322		
84	100		
86	64.0	46.0	85.4
49	138.7	83.9	155.9



#17
 Methyl tert-butyl Ether
 Concen: 0.203 ug/L
 RT: 2.709 min Scan# 519
 Delta R.T. -0.000 min
 Lab File: VV038760.D
 Acq: 06 Jun 2025 10:55

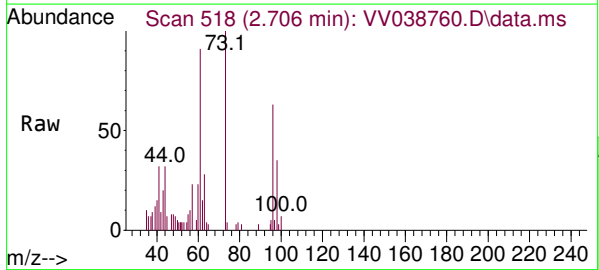
Tgt Ion	Resp	Lower	Upper
73	8279		
73	100		
43	16.4	14.6	22.0
57	26.7	18.2	27.2



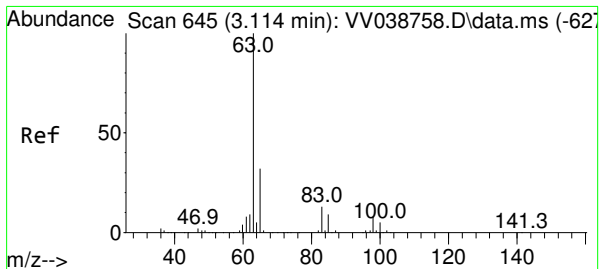
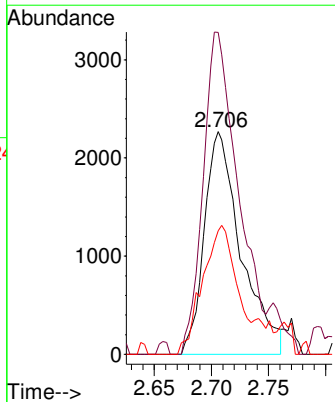
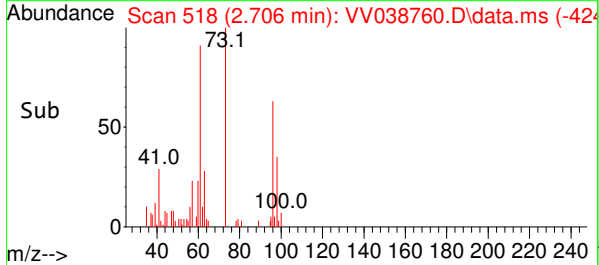


#18
 trans-1,2-Dichloroethene
 Concen: 0.227 ug/L
 RT: 2.706 min Scan# 517
 Delta R.T. 0.003 min
 Lab File: VV038760.D
 Acq: 06 Jun 2025 10:55

Instrument : MSVOA_V
 ClientSampleId : MDL-WATER-QT2-2025-04

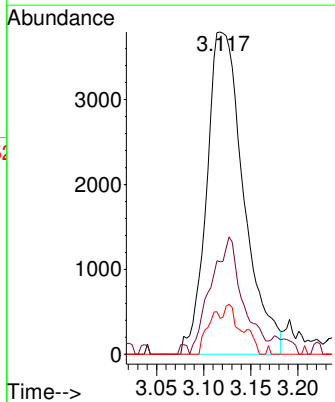
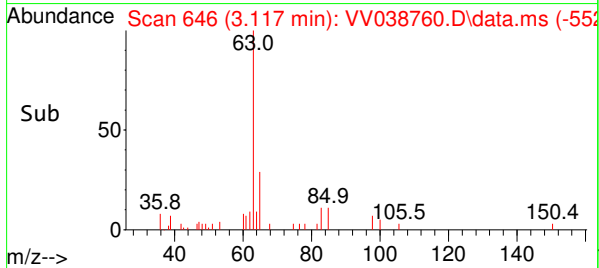
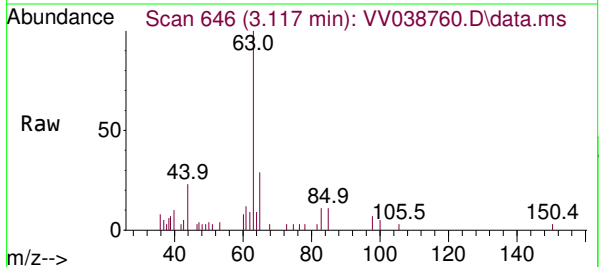


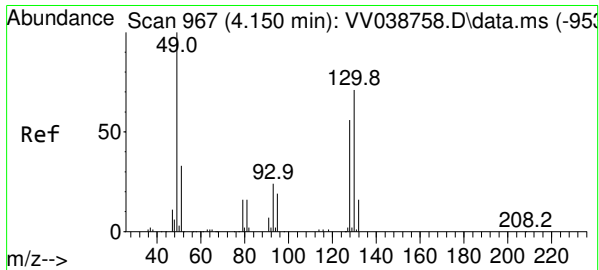
Tgt Ion	Resp	Lower	Upper
96	5065		
96	100		
61	144.4	91.4	169.8
98	55.4	41.6	77.2



#19
 1,1-Dichloroethane
 Concen: 0.232 ug/L
 RT: 3.117 min Scan# 646
 Delta R.T. 0.003 min
 Lab File: VV038760.D
 Acq: 06 Jun 2025 10:55

Tgt Ion	Resp	Lower	Upper
63	10360		
63	100		
65	28.8	21.8	40.4
83	11.1	9.2	17.2



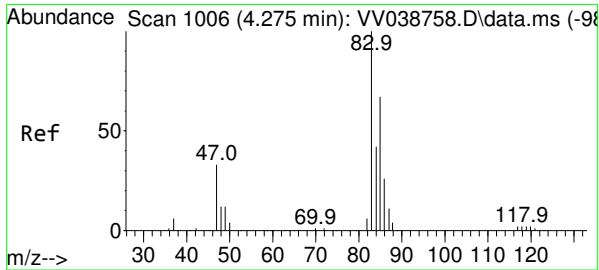
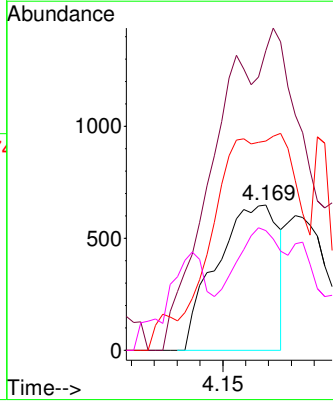
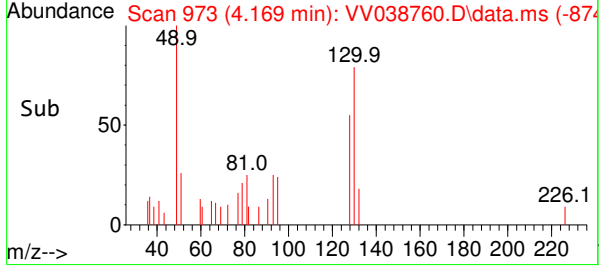
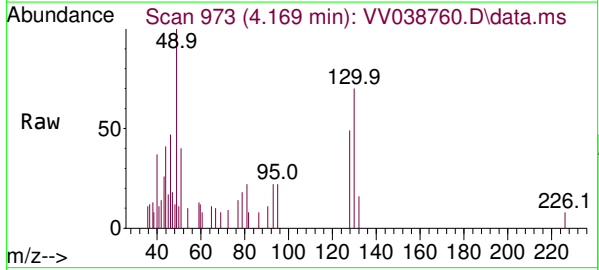


#23
 Bromochloromethane
 Concen: 0.121 ug/L
 RT: 4.169 min Scan# 967
 Delta R.T. 0.019 min
 Lab File: VV038760.D
 Acq: 06 Jun 2025 10:55

Instrument : MSVOA_V
 ClientSampleId : MDL-WATER-QT2-2025-04

Tgt Ion: 128 Resp: 1214

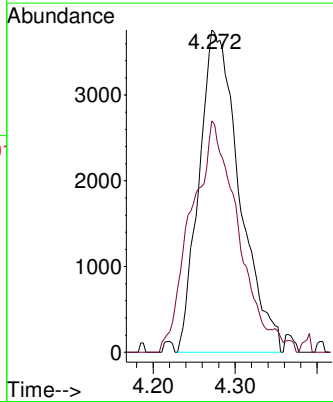
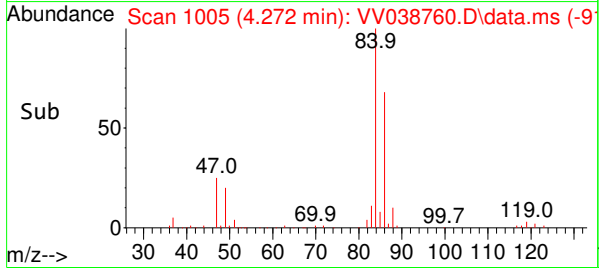
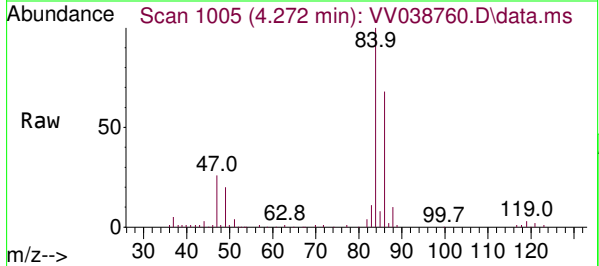
Ion	Ratio	Lower	Upper
128	100		
49	228.8	116.0	215.4#
130	144.1	90.2	167.6
51	82.3	43.4	65.2#

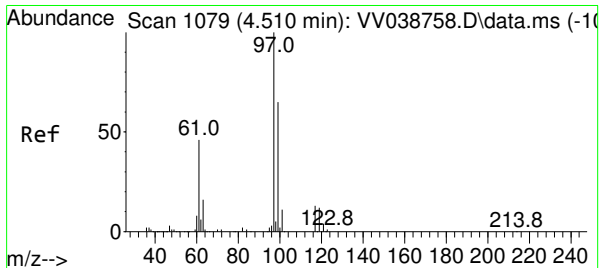


#25
 Chloroform
 Concen: 0.289 ug/L
 RT: 4.272 min Scan# 1005
 Delta R.T. -0.003 min
 Lab File: VV038760.D
 Acq: 06 Jun 2025 10:55

Tgt Ion: 83 Resp: 12816

Ion	Ratio	Lower	Upper
83	100		
85	71.7	47.2	87.6

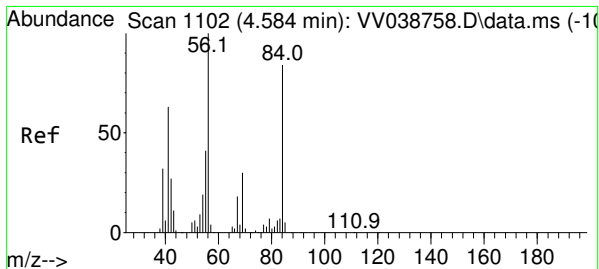
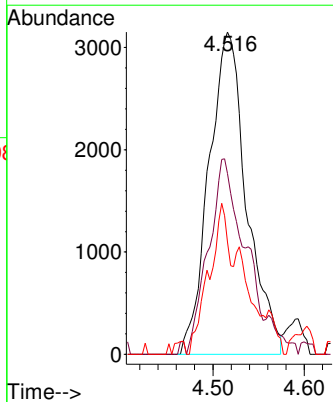
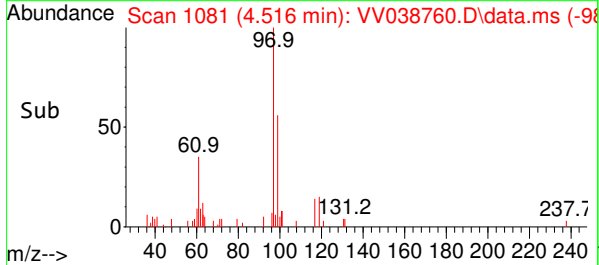
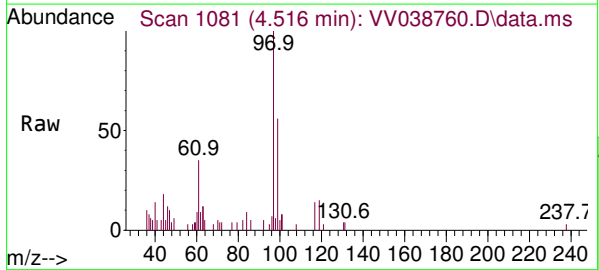




#29
 1,1,1-Trichloroethane
 Concen: 0.232 ug/L
 RT: 4.516 min Scan# 1
 Delta R.T. 0.006 min
 Lab File: VV038760.D
 Acq: 06 Jun 2025 10:55

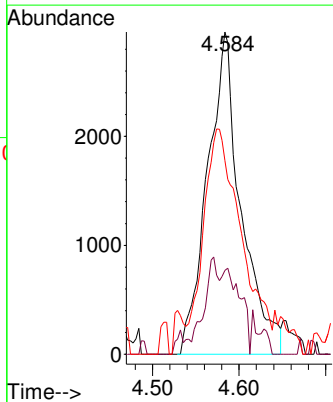
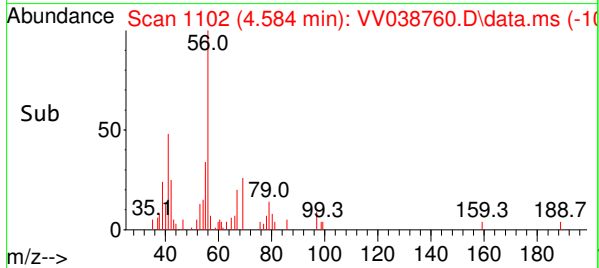
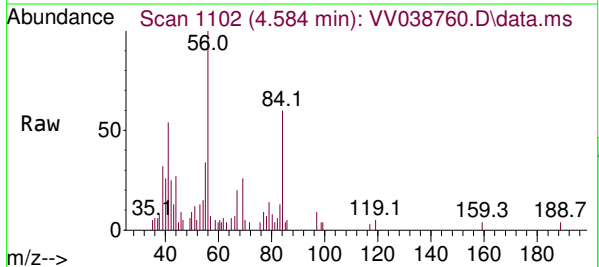
Instrument : MSVOA_V
 ClientSampleId : MDL-WATER-QT2-2025-04

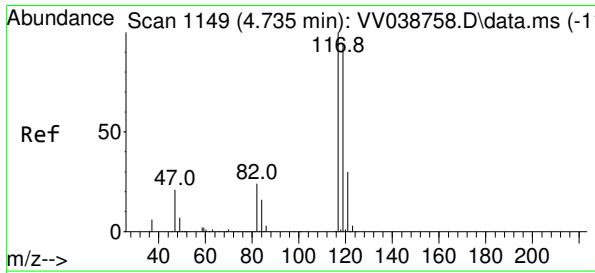
Tgt Ion	Resp	Lower	Upper
97	100		
99	57.8	50.9	76.3
61	26.3	35.8	53.6#



#30
 Cyclohexane
 Concen: 0.221 ug/L
 RT: 4.584 min Scan# 1102
 Delta R.T. -0.000 min
 Lab File: VV038760.D
 Acq: 06 Jun 2025 10:55

Tgt Ion	Resp	Lower	Upper
56	100		
69	9.7	24.0	36.0#
84	62.6	72.7	109.1#

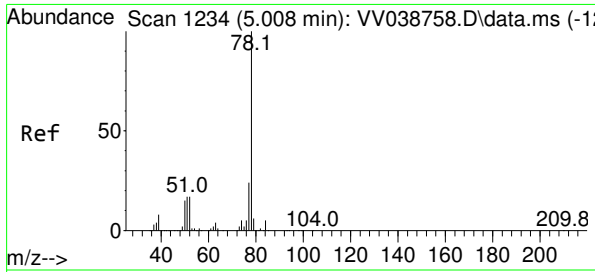
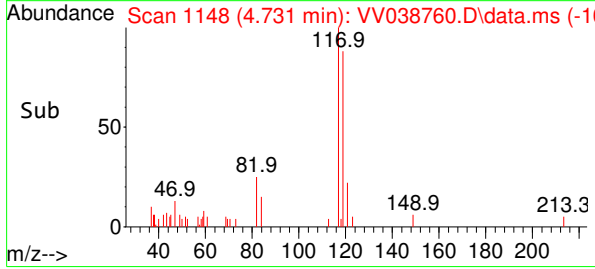
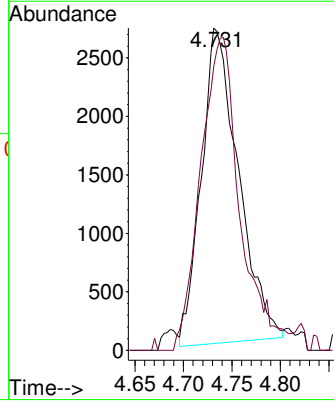
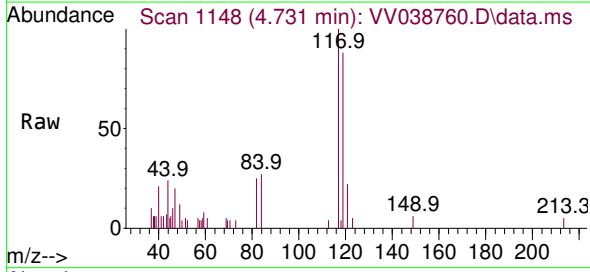




#31
 Carbon tetrachloride
 Concen: 0.209 ug/L
 RT: 4.731 min Scan# 1149
 Delta R.T. -0.003 min
 Lab File: VV038760.D
 Acq: 06 Jun 2025 10:55

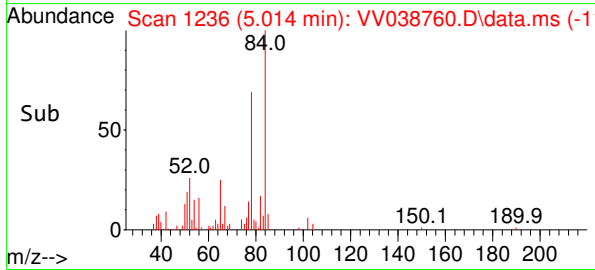
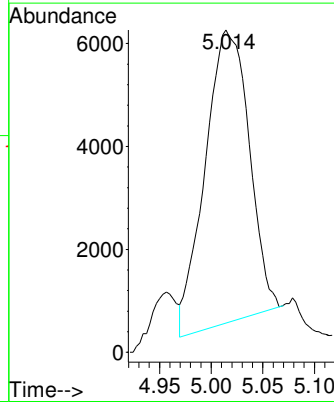
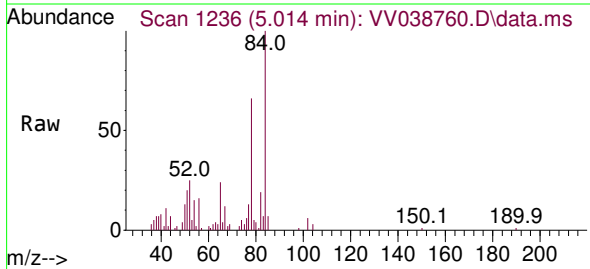
Instrument : MSVOA_V
 ClientSampleId : MDL-WATER-QT2-2025-04

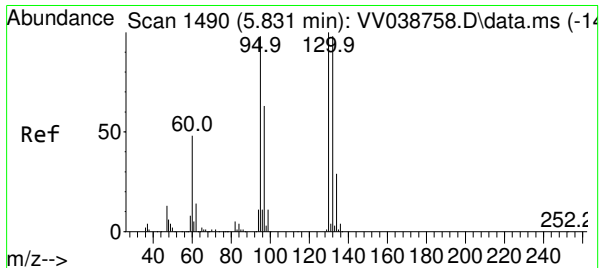
Tgt Ion: 117 Resp: 7172
 Ion Ratio Lower Upper
 117 100
 119 105.4 76.5 114.7



#33
 Benzene
 Concen: 0.185 ug/L
 RT: 5.014 min Scan# 1236
 Delta R.T. 0.006 min
 Lab File: VV038760.D
 Acq: 06 Jun 2025 10:55

Tgt Ion: 78 Resp: 16934

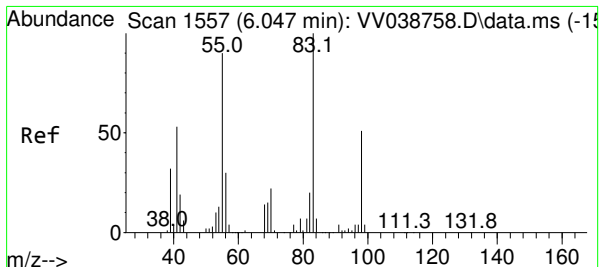
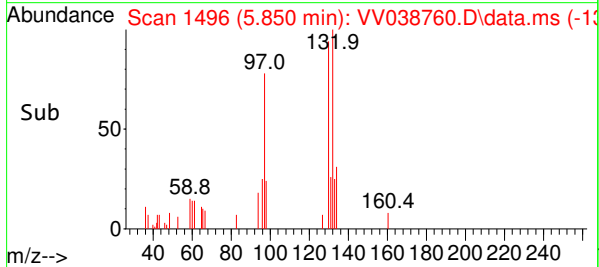
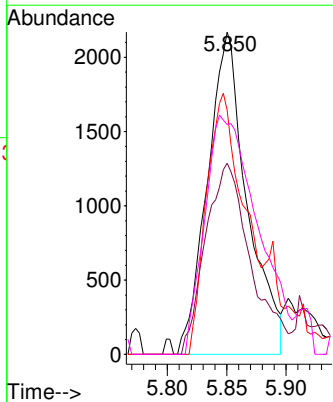
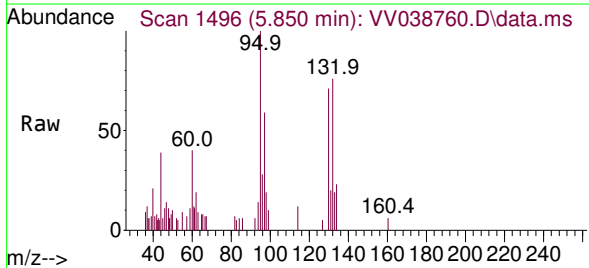




#34
 Trichloroethene
 Concen: 0.216 ug/L
 RT: 5.850 min Scan# 1
 Delta R.T. 0.019 min
 Lab File: VV038760.D
 Acq: 06 Jun 2025 10:55

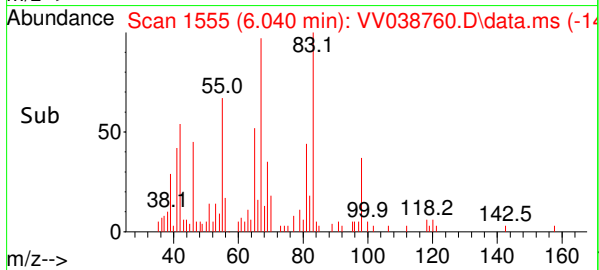
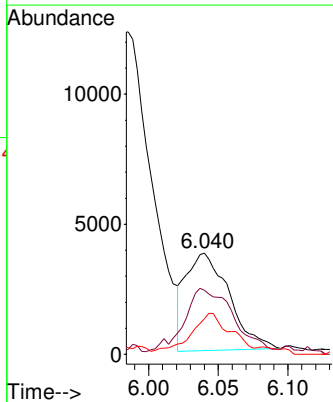
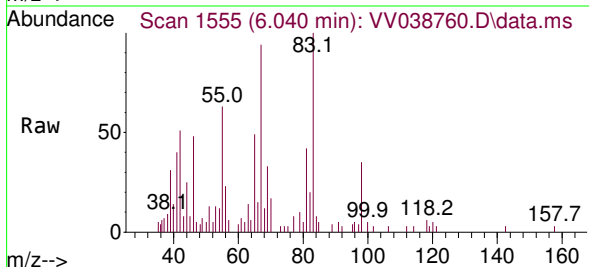
Instrument : MSVOA_V
 ClientSampleId : MDL-WATER-QT2-2025-04

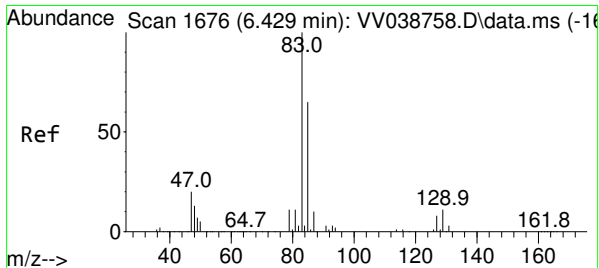
Tgt Ion	Resp	Lower	Upper
95	5036		
95	100		
97	59.3	43.5	80.9
132	75.8	64.0	118.8
130	71.3	66.9	124.3



#35
 Methylcyclohexane
 Concen: 0.221 ug/L
 RT: 6.040 min Scan# 1555
 Delta R.T. -0.006 min
 Lab File: VV038760.D
 Acq: 06 Jun 2025 10:55

Tgt Ion	Resp	Lower	Upper
83	8123		
83	100		
55	80.1	62.6	94.0
98	34.3	38.7	58.1#

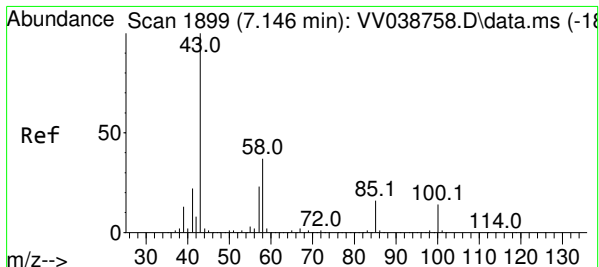
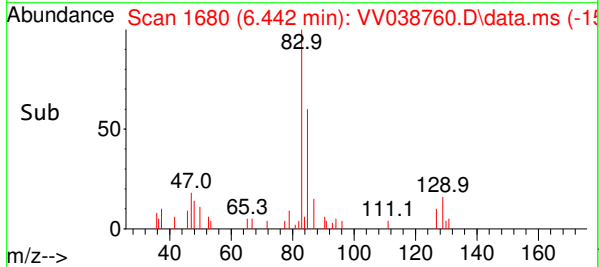
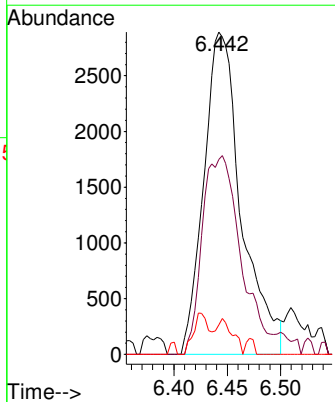
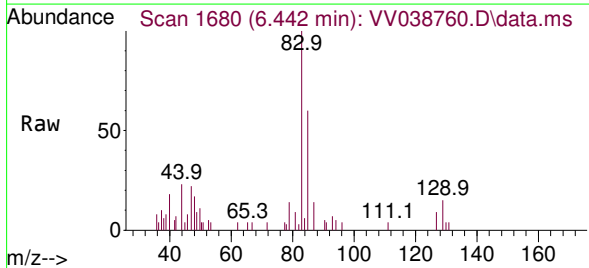




#38
 Bromodichloromethane
 Concen: 0.225 ug/L
 RT: 6.442 min Scan# 1
 Delta R.T. 0.013 min
 Lab File: VV038760.D
 Acq: 06 Jun 2025 10:55

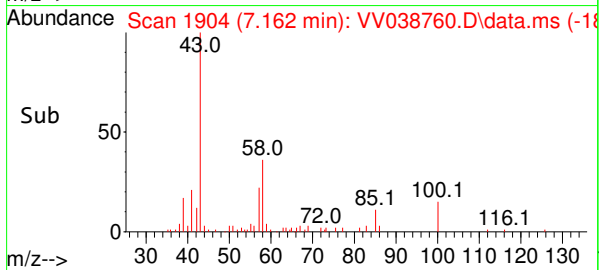
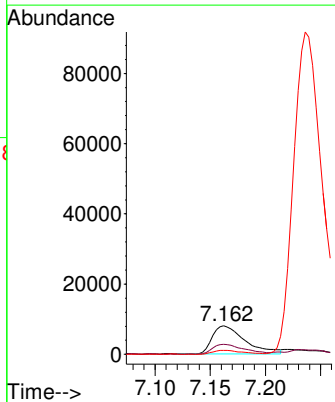
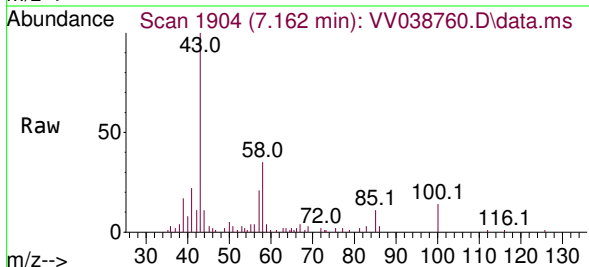
Instrument : MSVOA_V
 ClientSampleId : MDL-WATER-QT2-2025-04

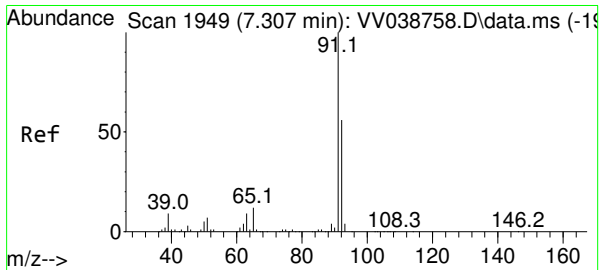
Tgt Ion	Resp	Lower	Upper
83	100		
85	60.5	44.0	81.6
127	9.2	6.2	9.4



#40
 4-Methyl-2-pentanone
 Concen: 1.508 ug/L
 RT: 7.162 min Scan# 1904
 Delta R.T. 0.016 min
 Lab File: VV038760.D
 Acq: 06 Jun 2025 10:55

Tgt Ion	Resp	Lower	Upper
43	100		
58	35.0	31.1	46.7
100	0.0	12.0	18.0#

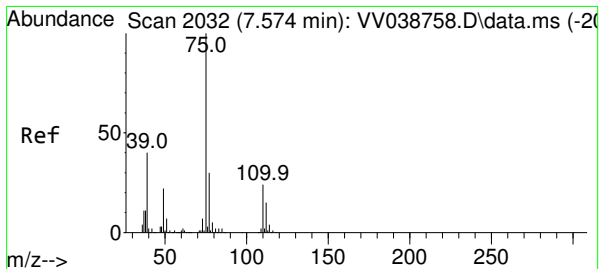
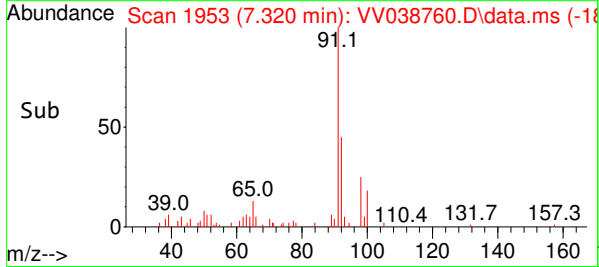
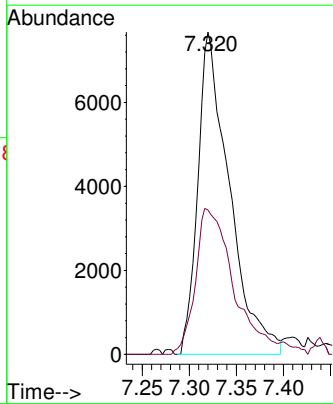
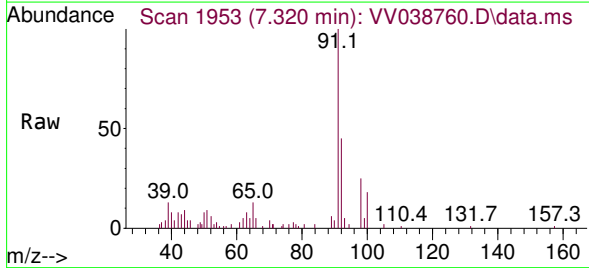




#42
 Toluene
 Concen: 0.193 ug/L
 RT: 7.320 min Scan# 1
 Delta R.T. 0.013 min
 Lab File: VV038760.D
 Acq: 06 Jun 2025 10:55

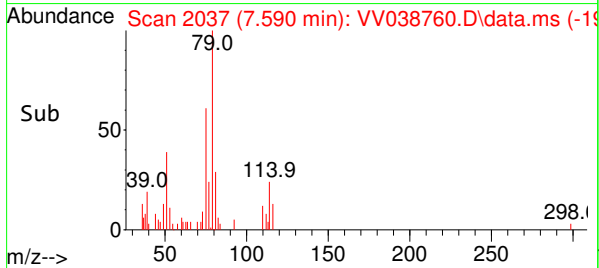
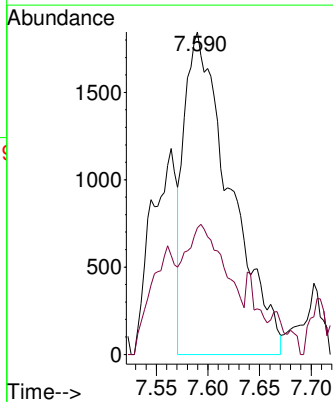
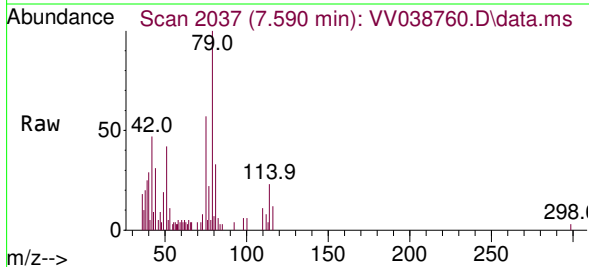
Instrument : MSVOA_V
 ClientSampleId : MDL-WATER-QT2-2025-04

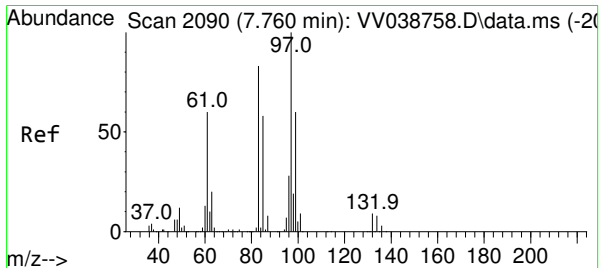
Tgt Ion: 91 Resp: 17878
 Ion Ratio Lower Upper
 91 100
 92 44.7 39.3 72.9



#44
 trans-1,3-Dichloropropene
 Concen: 0.211 ug/L
 RT: 7.590 min Scan# 2037
 Delta R.T. 0.016 min
 Lab File: VV038760.D
 Acq: 06 Jun 2025 10:55

Tgt Ion: 75 Resp: 5690
 Ion Ratio Lower Upper
 75 100
 77 39.2 21.4 39.8

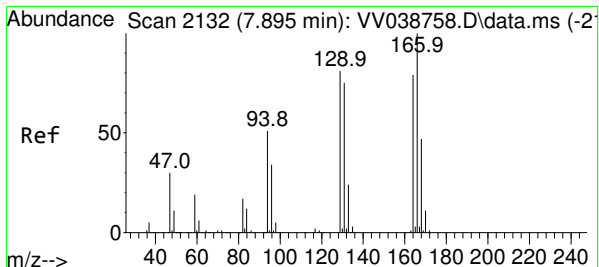
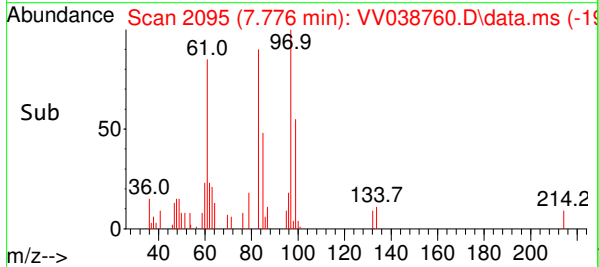
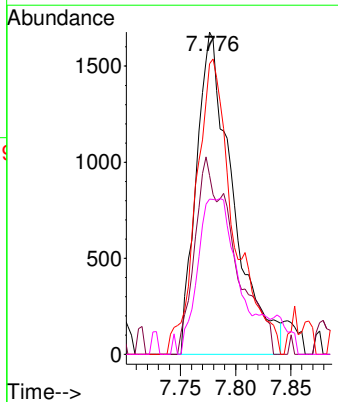
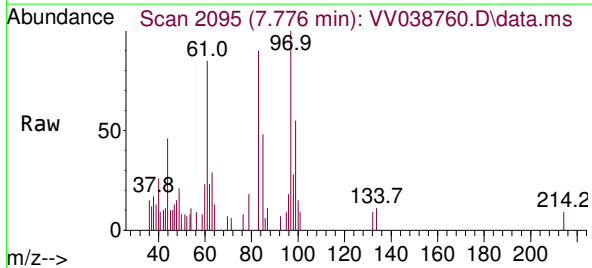




#45
 1,1,2-Trichloroethane
 Concen: 0.227 ug/L
 RT: 7.776 min Scan# 2135
 Delta R.T. 0.016 min
 Lab File: VV038760.D
 Acq: 06 Jun 2025 10:55

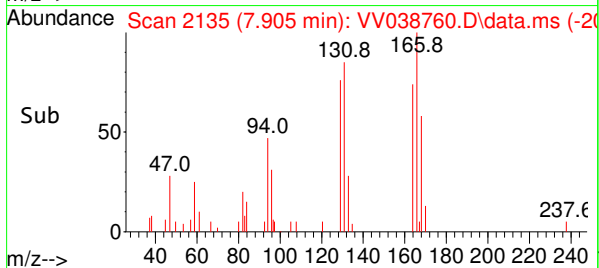
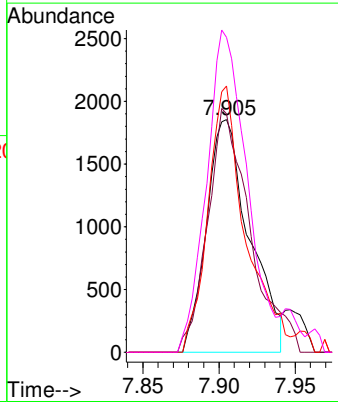
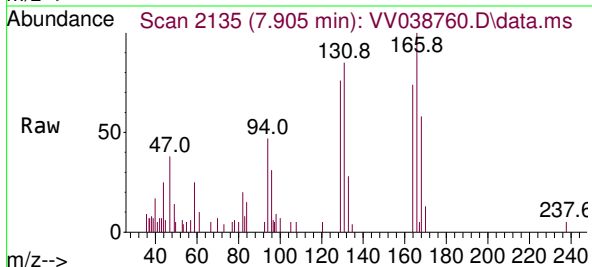
Instrument : MSVOA_V
 ClientSampleId : MDL-WATER-QT2-2025-04

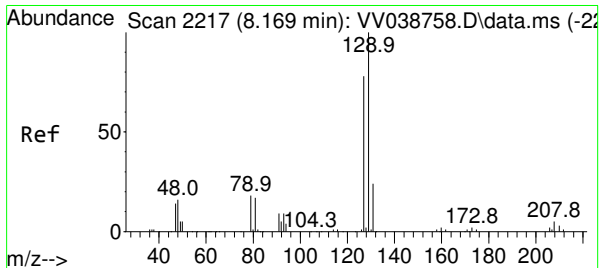
Tgt Ion	Resp	Lower	Upper
97	3873		
99	55.5	42.7	79.3
83	90.1	57.2	106.2
85	48.2	37.0	68.8



#47
 Tetrachloroethene
 Concen: 0.202 ug/L
 RT: 7.905 min Scan# 2135
 Delta R.T. 0.010 min
 Lab File: VV038760.D
 Acq: 06 Jun 2025 10:55

Tgt Ion	Resp	Lower	Upper
164	3636		
164	100		
129	102.4	66.3	123.1
131	114.4	63.2	117.4
166	135.3	85.4	158.6

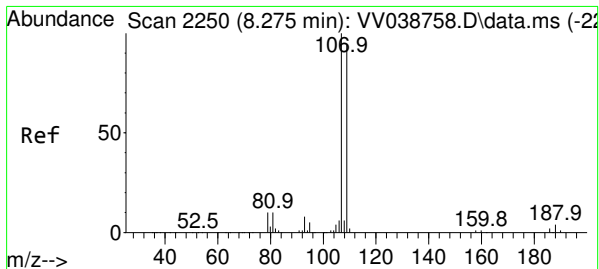
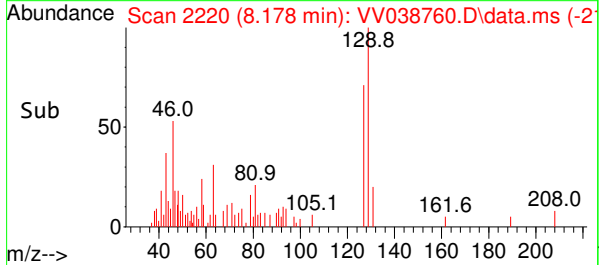
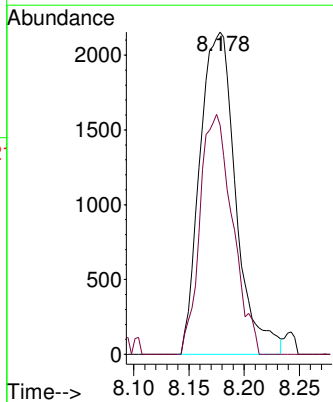
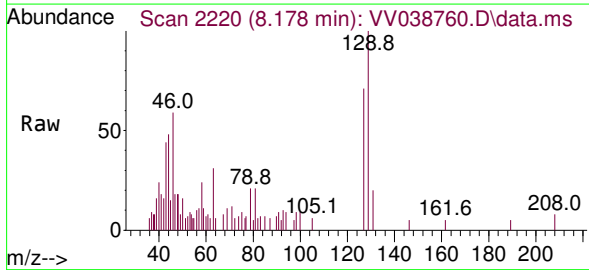




#49
 Dibromochloromethane
 Concen: 0.257 ug/L
 RT: 8.178 min Scan# 2217
 Delta R.T. 0.010 min
 Lab File: VV038760.D
 Acq: 06 Jun 2025 10:55

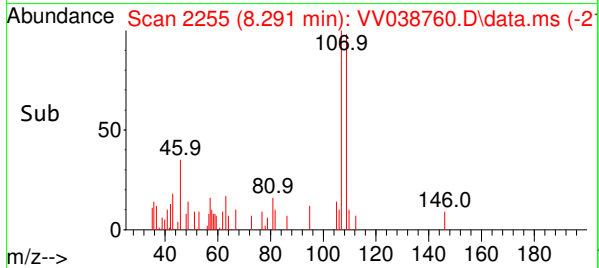
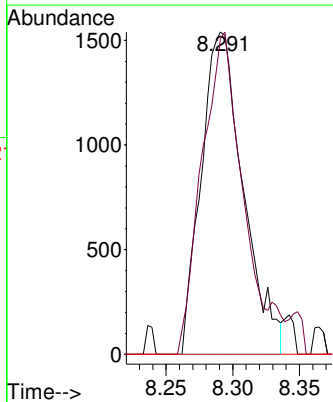
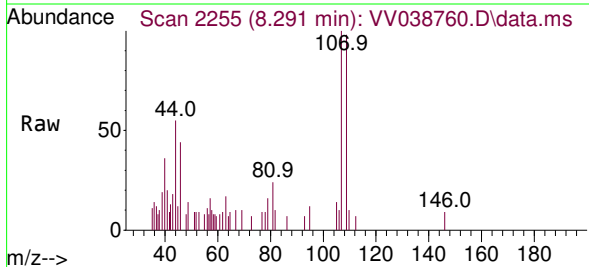
Instrument : MSVOA_V
 ClientSampleId : MDL-WATER-QT2-2025-04

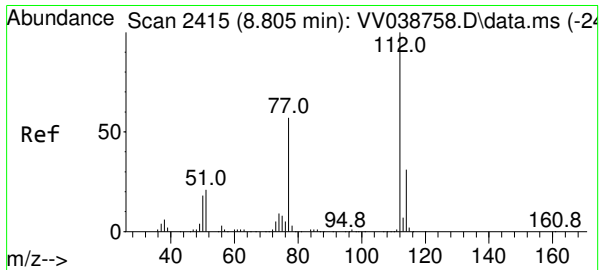
Tgt Ion:129 Resp: 4878
 Ion Ratio Lower Upper
 129 100
 127 71.1 53.5 99.3



#50
 1,2-Dibromoethane
 Concen: 0.228 ug/L
 RT: 8.291 min Scan# 2255
 Delta R.T. 0.016 min
 Lab File: VV038760.D
 Acq: 06 Jun 2025 10:55

Tgt Ion:107 Resp: 3382
 Ion Ratio Lower Upper
 107 100
 109 97.9 70.2 130.4
 188 0.0 2.8 4.2#

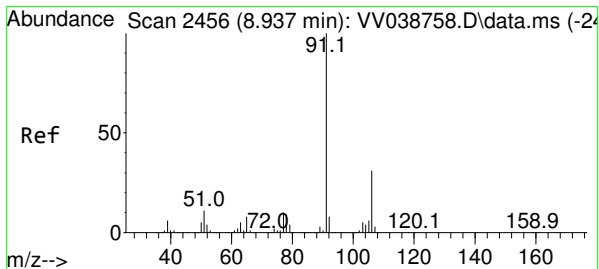
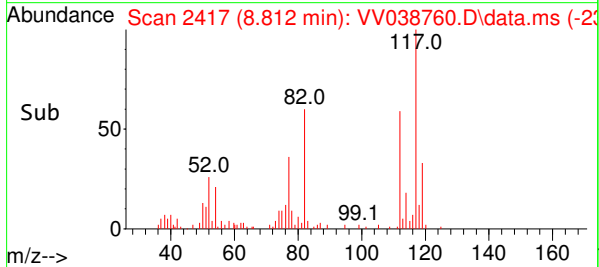
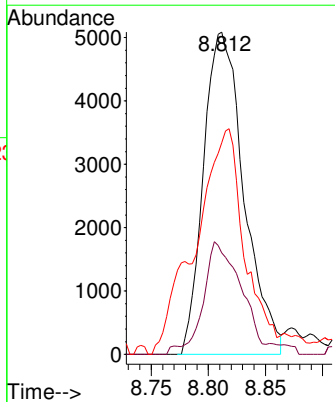
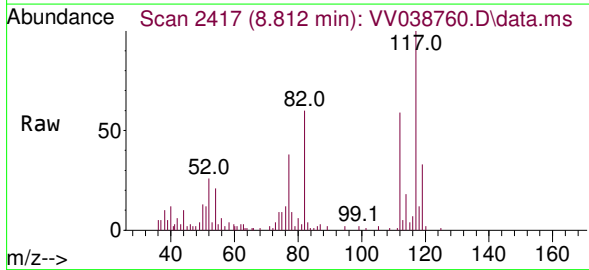




#51
 Chlorobenzene
 Concen: 0.208 ug/L
 RT: 8.812 min Scan# 2417
 Delta R.T. 0.006 min
 Lab File: VV038760.D
 Acq: 06 Jun 2025 10:55

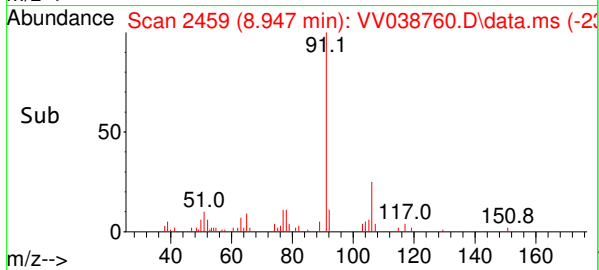
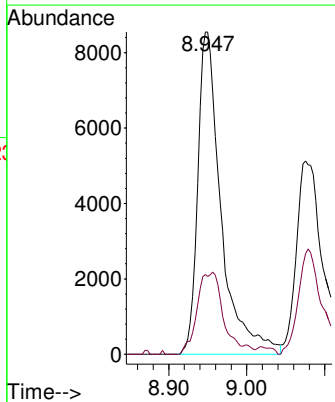
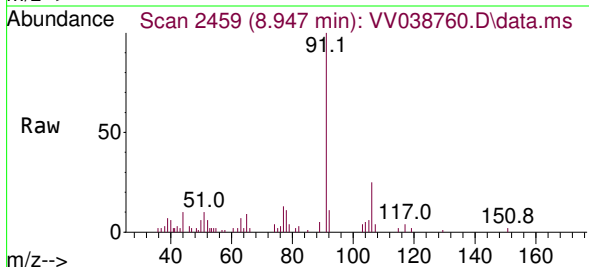
Instrument : MSVOA_V
 ClientSampleId : MDL-WATER-QT2-2025-04

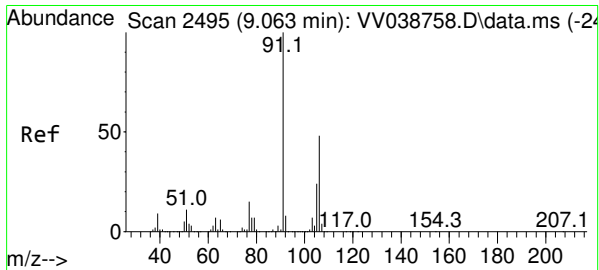
Tgt Ion	Resp	Lower	Upper
112	12511		
114	31.5	22.6	42.0
77	65.7	47.0	70.6



#52
 Ethylbenzene
 Concen: 0.188 ug/L
 RT: 8.947 min Scan# 2459
 Delta R.T. 0.010 min
 Lab File: VV038760.D
 Acq: 06 Jun 2025 10:55

Tgt Ion	Resp	Lower	Upper
91	17750		
106	24.7	21.3	39.6

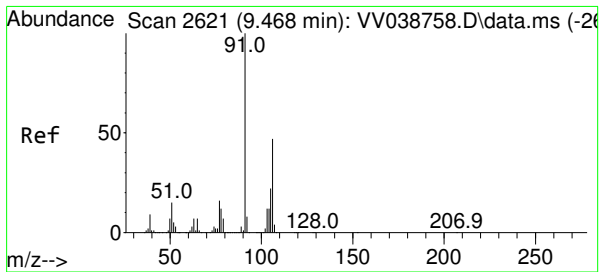
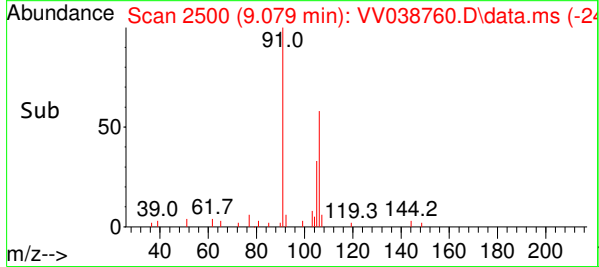
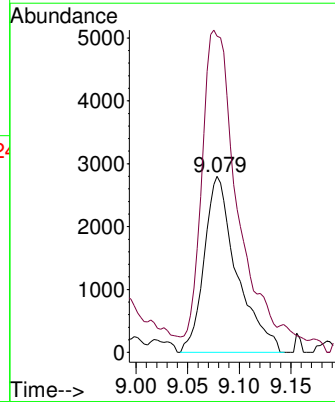
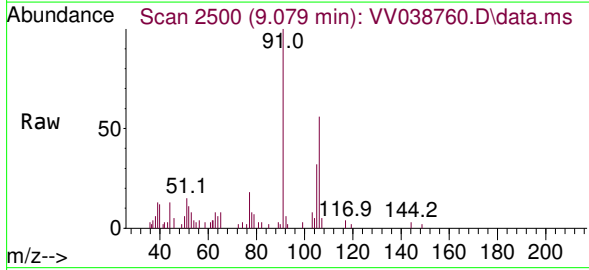




#53
 m,p-Xylene
 Concen: 0.172 ug/L
 RT: 9.079 min Scan# 21
 Delta R.T. 0.016 min
 Lab File: VV038760.D
 Acq: 06 Jun 2025 10:55

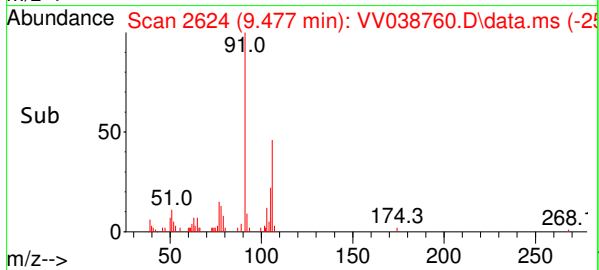
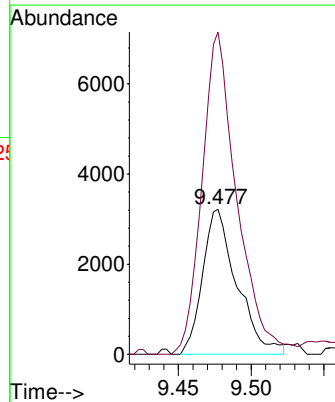
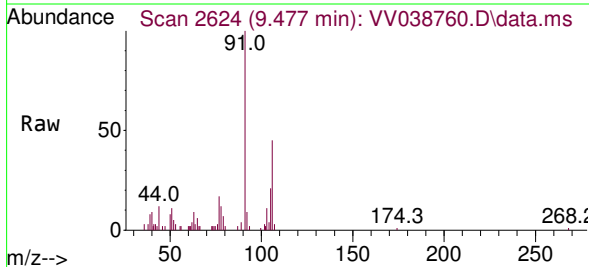
Instrument : MSVOA_V
 ClientSampleId : MDL-WATER-QT2-2025-04

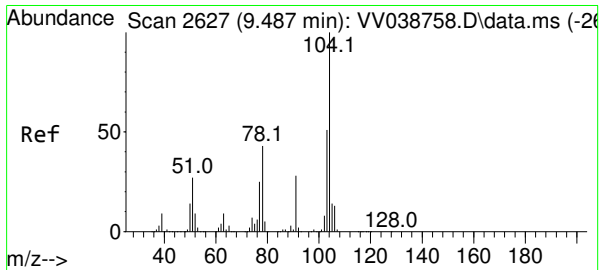
Tgt Ion:106 Resp: 6152
 Ion Ratio Lower Upper
 106 100
 91 179.7 146.3 271.7



#54
 o-Xylene
 Concen: 0.156 ug/L
 RT: 9.477 min Scan# 2624
 Delta R.T. 0.010 min
 Lab File: VV038760.D
 Acq: 06 Jun 2025 10:55

Tgt Ion:106 Resp: 5296
 Ion Ratio Lower Upper
 106 100
 91 222.1 150.8 280.0



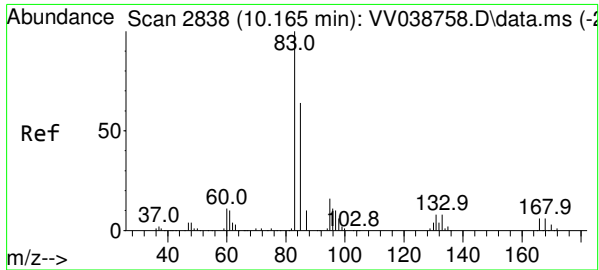
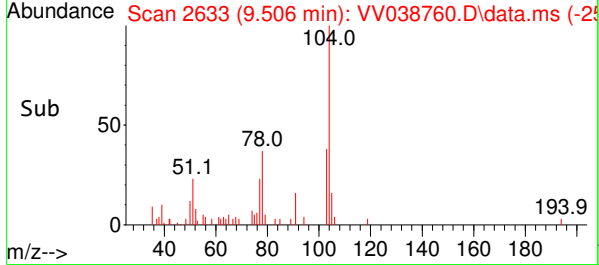
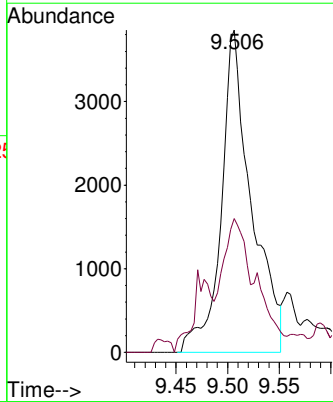
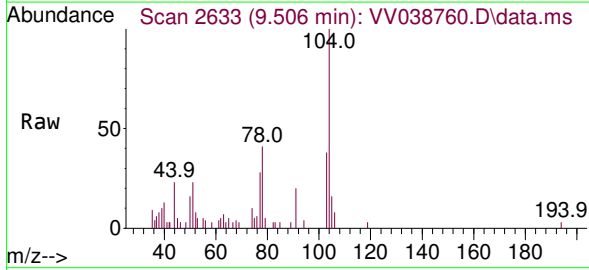


#55
 Styrene
 Concen: 0.135 ug/L
 RT: 9.506 min Scan# 21
 Delta R.T. 0.019 min
 Lab File: VV038760.D
 Acq: 06 Jun 2025 10:55

Instrument : MSVOA_V
 ClientSampleId : MDL-WATER-QT2-2025-04

Tgt Ion: 104 Resp: 7822

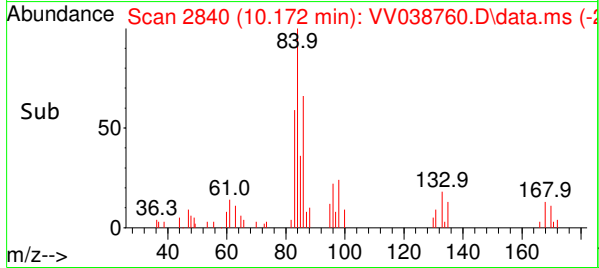
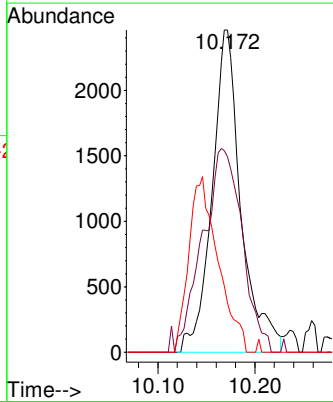
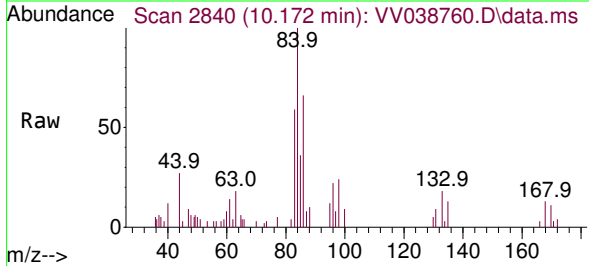
Ion	Ratio	Lower	Upper
104	100		
78	41.5	30.5	56.7

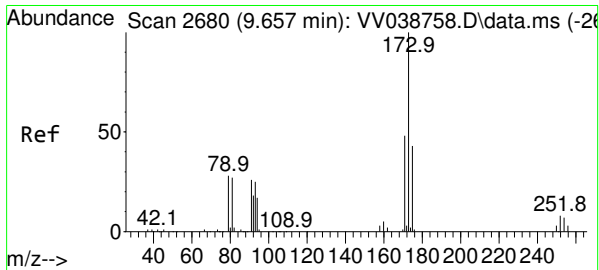


#57
 1,1,2,2-Tetrachloroethane
 Concen: 0.260 ug/L
 RT: 10.172 min Scan# 2840
 Delta R.T. 0.006 min
 Lab File: VV038760.D
 Acq: 06 Jun 2025 10:55

Tgt Ion: 83 Resp: 5096

Ion	Ratio	Lower	Upper
83	100		
85	60.7	46.1	85.5
131	15.3	8.5	12.7#

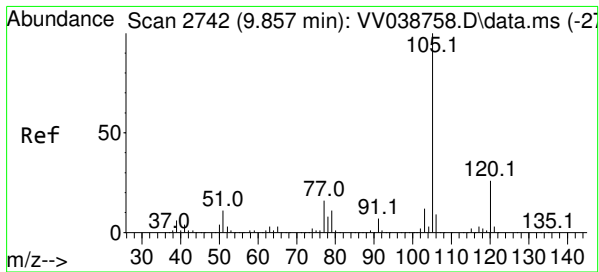
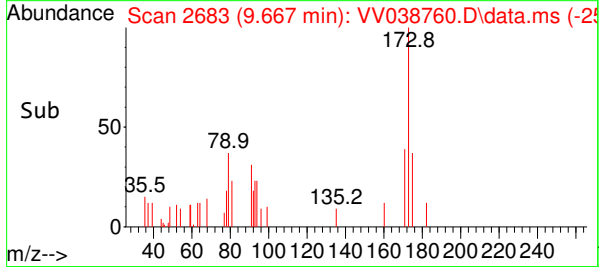
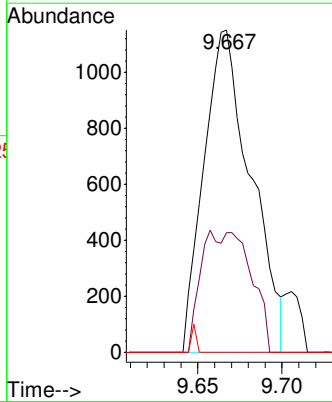
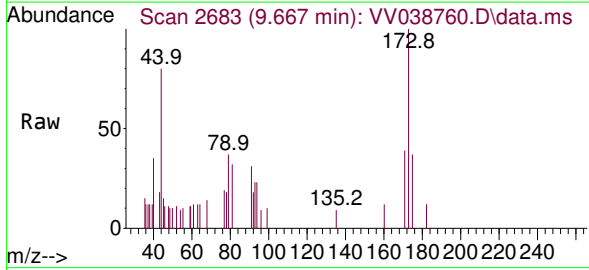




#59
 Bromoform
 Concen: 0.291 ug/L
 RT: 9.667 min Scan# 21
 Delta R.T. 0.010 min
 Lab File: VV038760.D
 Acq: 06 Jun 2025 10:55

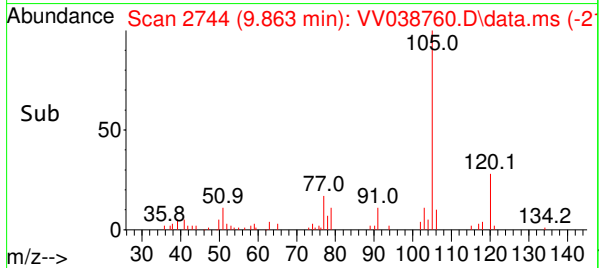
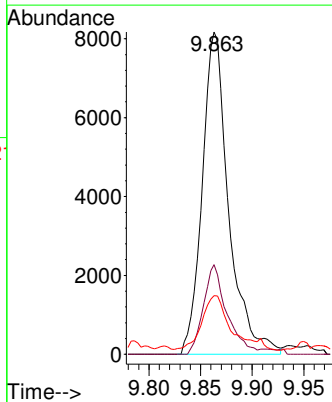
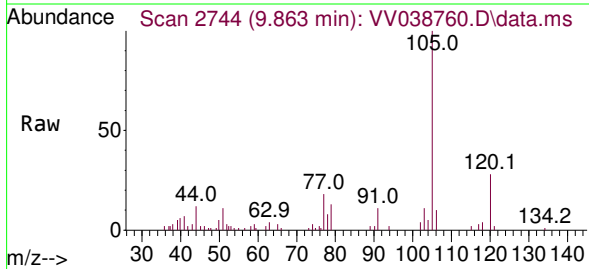
Instrument : MSVOA_V
 ClientSampleId : MDL-WATER-QT2-2025-04

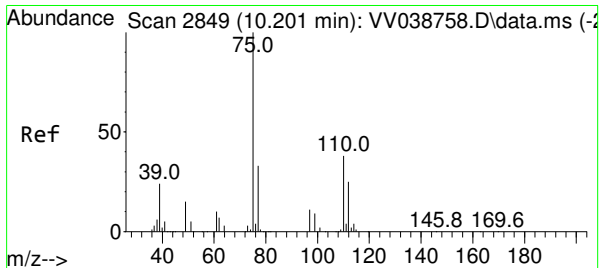
Tgt Ion	Ratio	Lower	Upper
173	100		
175	17.5	39.5	59.3#
254	0.9	5.7	8.5#



#60
 Isopropylbenzene
 Concen: 0.201 ug/L
 RT: 9.863 min Scan# 2744
 Delta R.T. 0.006 min
 Lab File: VV038760.D
 Acq: 06 Jun 2025 10:55

Tgt Ion	Ratio	Lower	Upper
105	100		
120	24.8	21.0	31.4
77	18.8	12.2	18.4#

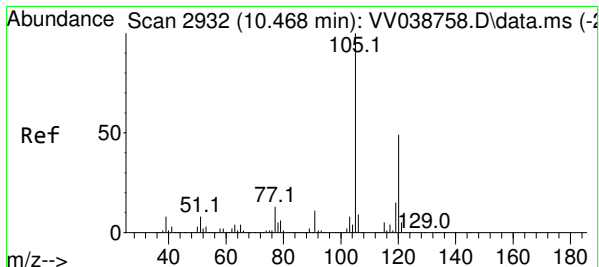
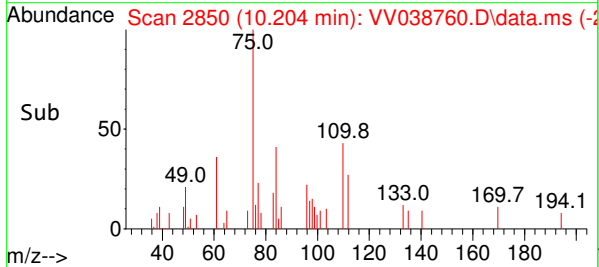
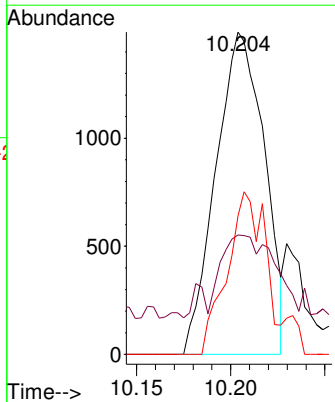
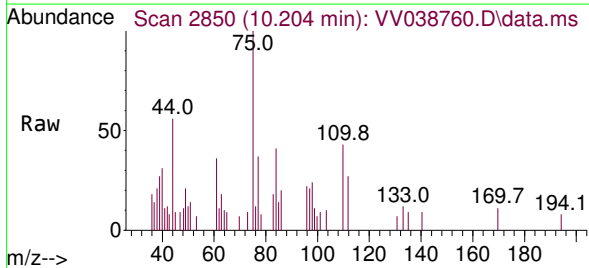




#61
 1,2,3-Trichloropropane
 Concen: 0.257 ug/L
 RT: 10.204 min Scan# 21
 Delta R.T. 0.003 min
 Lab File: VV038760.D
 Acq: 06 Jun 2025 10:55

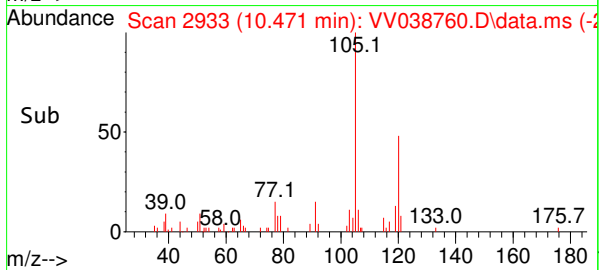
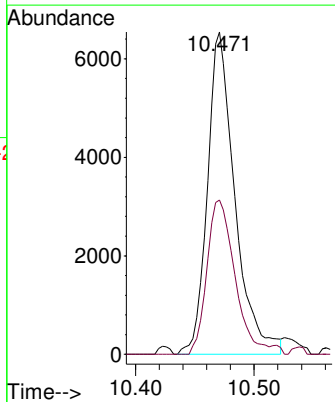
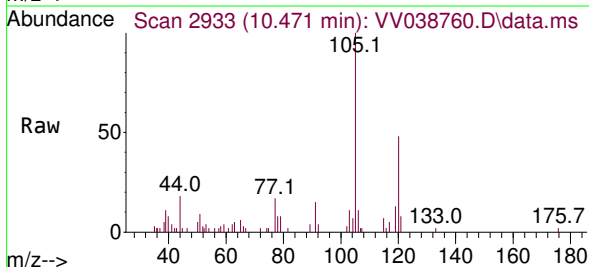
Instrument : MSVOA_V
 ClientSampleId : MDL-WATER-QT2-2025-04

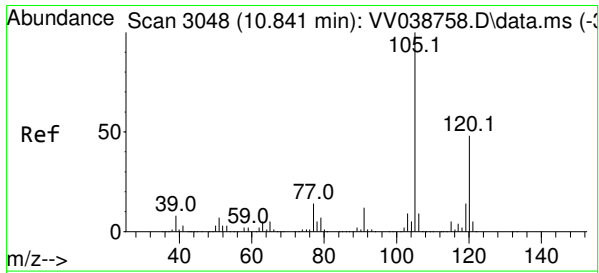
Tgt Ion	Resp	Lower	Upper
75	100		
77	26.3	25.5	38.3
110	39.7	30.9	46.3



#62
 1,3,5-Trimethylbenzene
 Concen: 0.189 ug/L
 RT: 10.471 min Scan# 2933
 Delta R.T. 0.003 min
 Lab File: VV038760.D
 Acq: 06 Jun 2025 10:55

Tgt Ion	Resp	Lower	Upper
105	100		
120	48.5	38.3	57.5

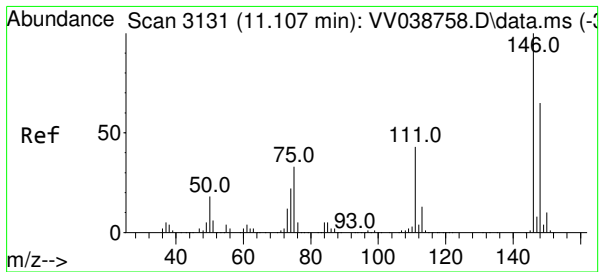
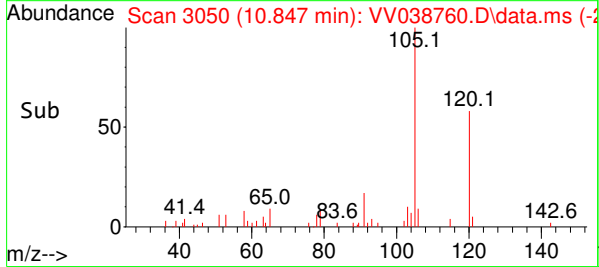
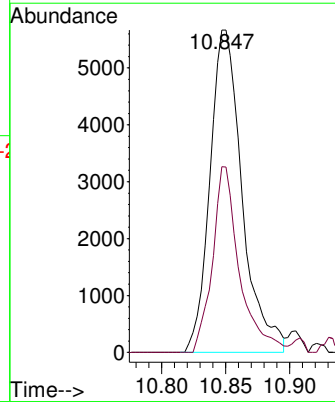
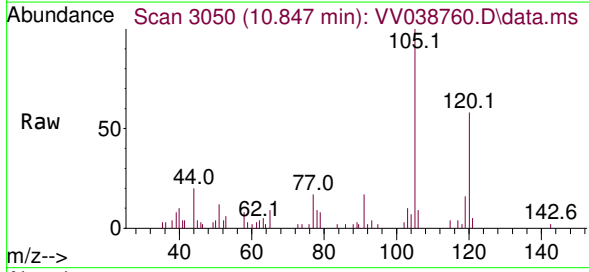




#63
 1,2,4-Trimethylbenzene
 Concen: 0.178 ug/L
 RT: 10.847 min Scan# 3133
 Delta R.T. 0.006 min
 Lab File: VV038760.D
 Acq: 06 Jun 2025 10:55

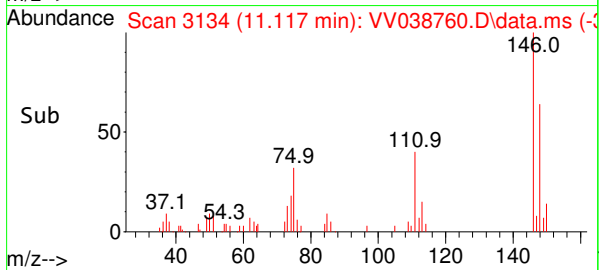
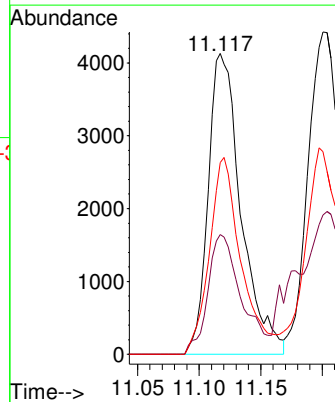
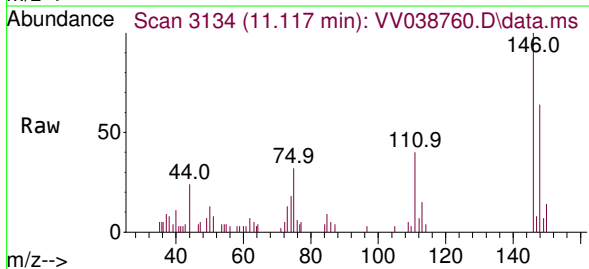
Instrument : MSVOA_V
 ClientSampleId : MDL-WATER-QT2-2025-04

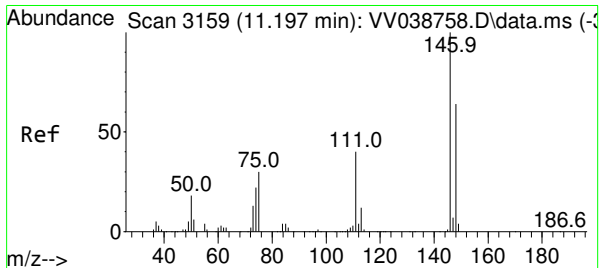
Tgt Ion:105 Resp: 9925
 Ion Ratio Lower Upper
 105 100
 120 48.4 36.2 54.2



#64
 1,3-Dichlorobenzene
 Concen: 0.220 ug/L
 RT: 11.117 min Scan# 3134
 Delta R.T. 0.010 min
 Lab File: VV038760.D
 Acq: 06 Jun 2025 10:55

Tgt Ion:146 Resp: 7664
 Ion Ratio Lower Upper
 146 100
 111 39.8 29.0 53.9
 148 63.7 44.1 81.9

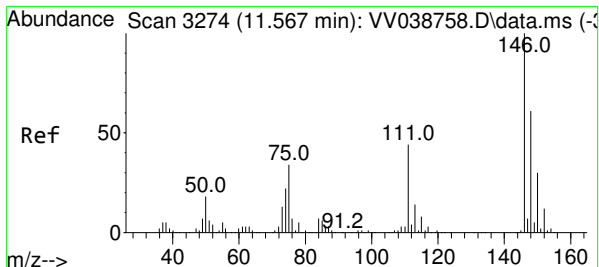
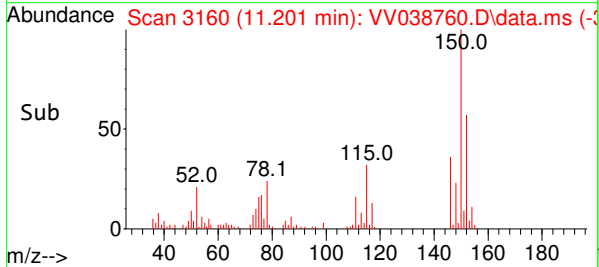
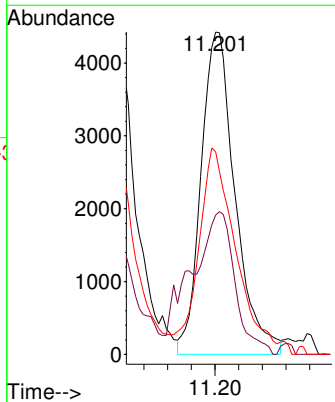
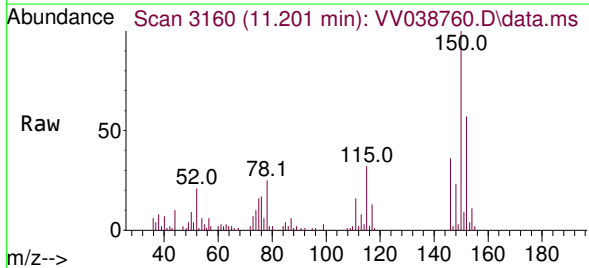




#65
 1,4-Dichlorobenzene
 Concen: 0.241 ug/L
 RT: 11.201 min Scan# 3160
 Delta R.T. 0.003 min
 Lab File: VV038760.D
 Acq: 06 Jun 2025 10:55

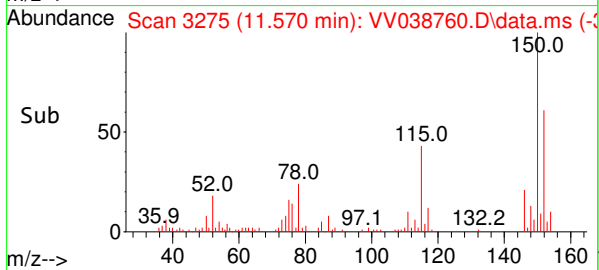
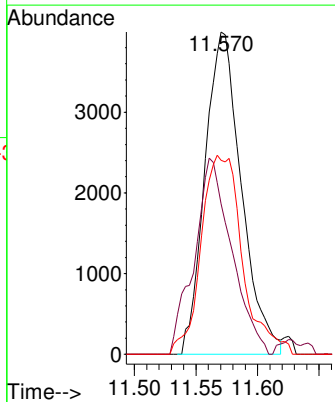
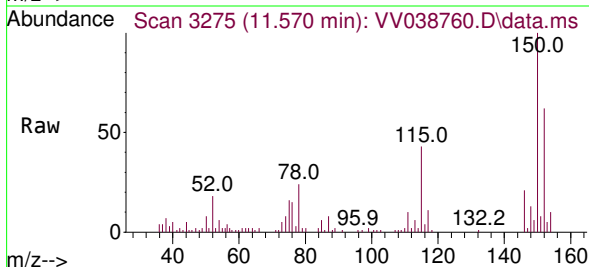
Instrument : MSVOA_V
 ClientSampleId : MDL-WATER-QT2-2025-04

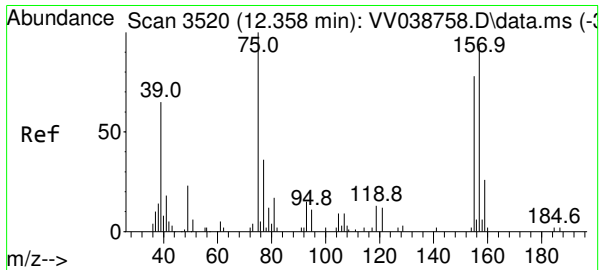
Tgt Ion	Ratio	Lower	Upper
146	100		
111	43.2	27.7	51.5
148	62.8	44.9	83.5



#67
 1,2-Dichlorobenzene
 Concen: 0.257 ug/L
 RT: 11.570 min Scan# 3275
 Delta R.T. 0.003 min
 Lab File: VV038760.D
 Acq: 06 Jun 2025 10:55

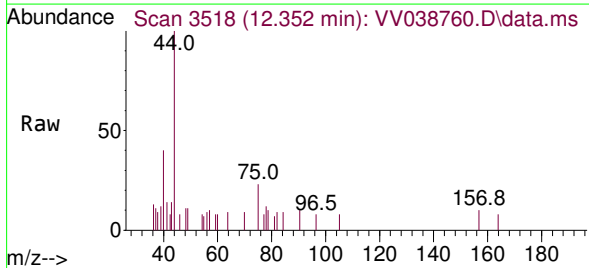
Tgt Ion	Ratio	Lower	Upper
146	100		
111	46.7	35.4	53.0
148	60.2	52.2	78.2



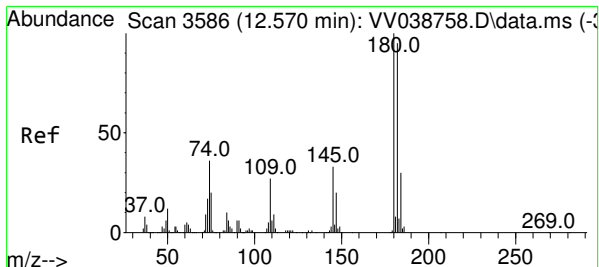
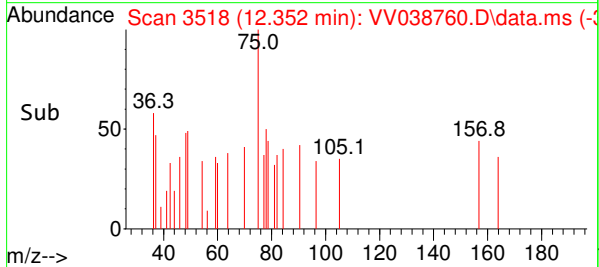
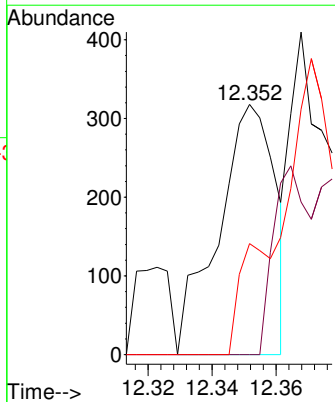


#68
 1,2-Dibromo-3-chloropropane
 Concen: 0.177 ug/L
 RT: 12.352 min Scan# 3518
 Delta R.T. -0.006 min
 Lab File: VV038760.D
 Acq: 06 Jun 2025 10:55

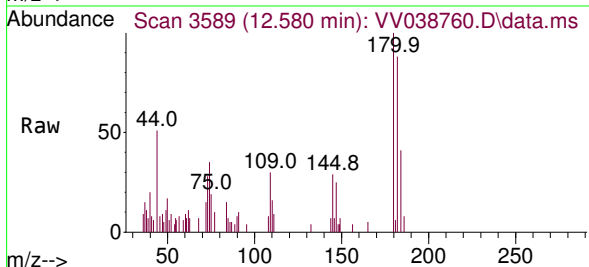
Instrument : MSVOA_V
 ClientSampleId : MDL-WATER-QT2-2025-04



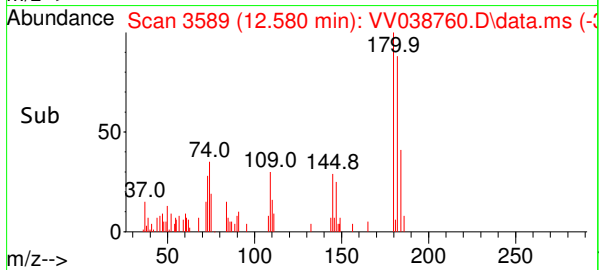
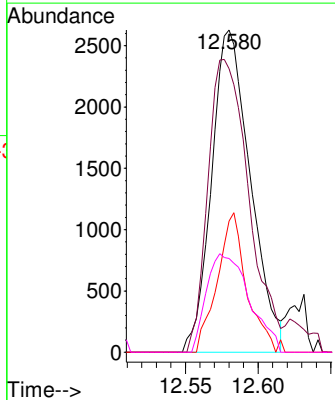
Tgt Ion	Resp	Lower	Upper
75	100		
155	0.0	60.3	90.5#
157	44.3	76.9	115.3#

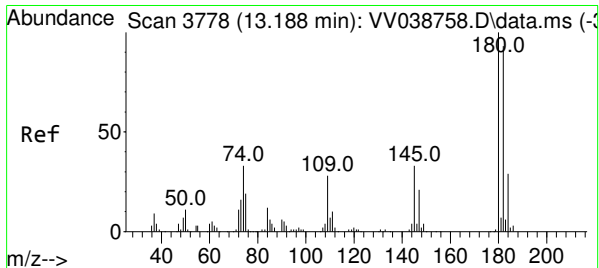


#69
 1,3,5-Trichlorobenzene
 Concen: 0.215 ug/L
 RT: 12.580 min Scan# 3589
 Delta R.T. 0.010 min
 Lab File: VV038760.D
 Acq: 06 Jun 2025 10:55



Tgt Ion	Resp	Lower	Upper
180	100		
182	95.7	75.6	113.4
184	33.0	24.1	36.1
145	33.8	24.4	36.6

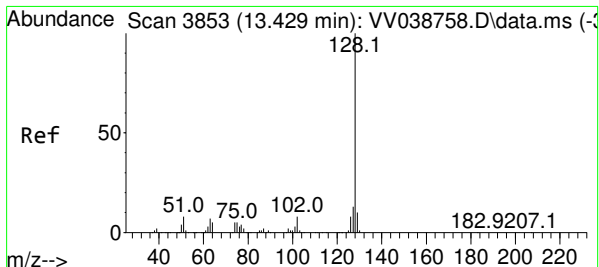
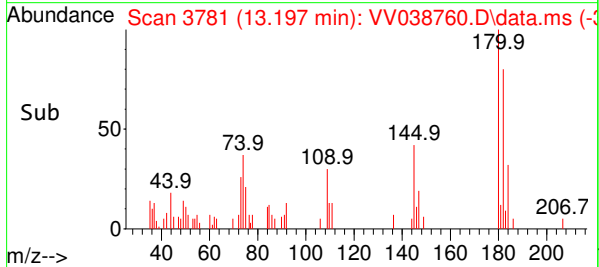
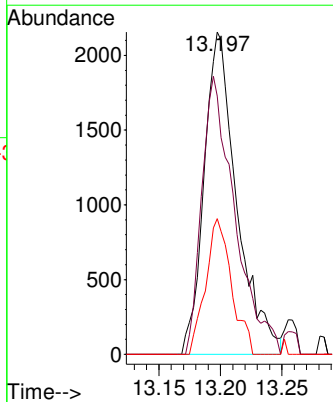
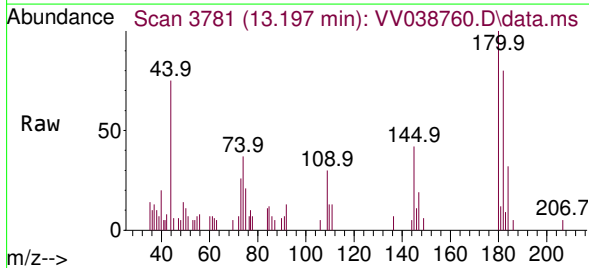




#70
 1,2,4-trichlorobenzene
 Concen: 0.223 ug/L
 RT: 13.197 min Scan# 3781
 Delta R.T. 0.010 min
 Lab File: VV038760.D
 Acq: 06 Jun 2025 10:55

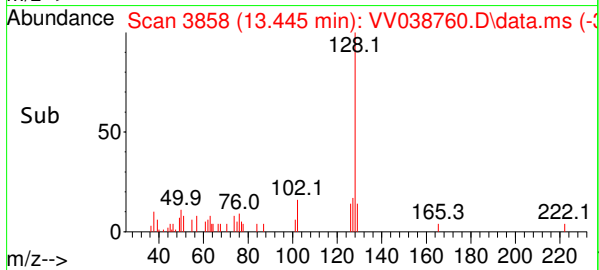
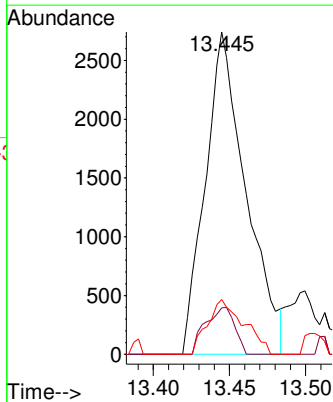
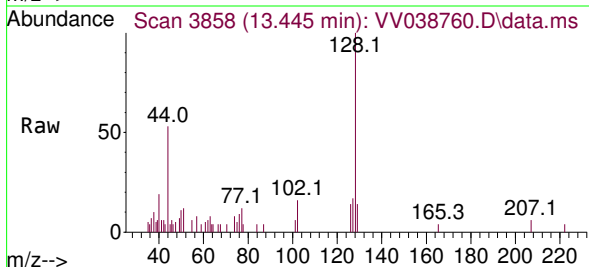
Instrument : MSVOA_V
 ClientSampleId : MDL-WATER-QT2-2025-04

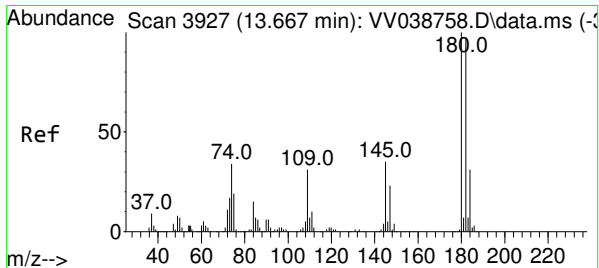
Tgt Ion	Ratio	Lower	Upper
180	100		
182	87.2	76.6	115.0
145	33.3	26.0	39.0



#71
 Naphthalene
 Concen: 0.177 ug/L
 RT: 13.445 min Scan# 3858
 Delta R.T. 0.016 min
 Lab File: VV038760.D
 Acq: 06 Jun 2025 10:55

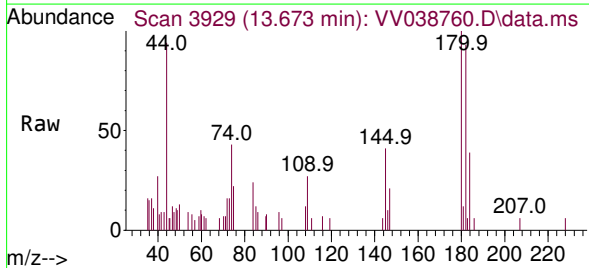
Tgt Ion	Ratio	Lower	Upper
128	100		
129	10.5	7.6	11.4
127	15.2	10.9	16.3





#72
 1,2,3-Trichlorobenzene
 Concen: 0.217 ug/L
 RT: 13.673 min Scan# 3
 Delta R.T. 0.006 min
 Lab File: VV038760.D
 Acq: 06 Jun 2025 10:55

Instrument : MSVOA_V
 ClientSampleId : MDL-WATER-QT2-2025-04



Tgt Ion: 180 Resp: 3533

Ion	Ratio	Lower	Upper
180	100		
182	90.6	76.0	114.0
145	42.6	28.4	42.6

