

Data Path : Z:\VOASRV\HPCHEM1\MSVOA V\DATA\VV061019\
 Data File : VV011375.D
 Acq On : 11 Jun 2019 05:03
 Operator : SY/MD
 Sample : K3229-10
 Misc : 25ML/MSVOA V/WATER
 ALS Vial : 1 Sample Multiplier: 1

Instrument :
 MSVOA_V
 ClientSampled :
 F9P30

Integration Parameters: rteint.p
 Integrator: RTE
 Smoothing : ON
 Sampling : 1
 Start Thrs: 0.1
 Stop Thrs : 0

Filtering: 5
 Min Area: 3 % of largest Peak
 Max Peaks: 100
 Peak Location: TOP

If leading or trailing edge < 100 prefer < Baseline drop else tangent >
 Peak separation: 5

Method : Z:\VOASRV\HPCHEM1\MSVOA_V\METHOD\SOMVTR060419WMA.M
 Title : TRACE VOA SOM01.0

Signal : TIC

peak #	R.T. min	first scan	max scan	last scan	PK TY	peak height	corr. area	corr. % max.	% of total
1	1.219	37	40	45	rVB2	9407	8432	1.76%	0.209%
2	1.312	61	69	76	rBV	62675	68132	14.24%	1.692%
3	1.557	141	145	153	rVB	104474	107509	22.47%	2.670%
4	2.119	310	320	330	rVB	112933	158336	33.10%	3.932%
5	2.196	335	344	355	rVB2	21035	34322	7.17%	0.852%
6	2.344	383	390	391	rBV6	5830	5696	1.19%	0.141%
7	2.647	474	484	492	rBV	10119	21464	4.49%	0.533%
8	2.704	495	502	522	rVB3	13182	32842	6.86%	0.816%
9	3.949	876	889	909	rBV	72980	196349	41.04%	4.876%
10	4.396	1011	1028	1046	rBV	84693	200727	41.96%	4.984%
11	5.090	1226	1244	1267	rBV2	202420	477216	99.75%	11.850%
12	5.659	1406	1421	1440	rBV	171708	343154	71.73%	8.521%
13	6.116	1548	1563	1585	rBV	117707	240658	50.30%	5.976%
14	7.029	1833	1847	1863	rBV	44057	82168	17.17%	2.040%
15	7.357	1934	1949	1966	rBV	209135	370418	77.42%	9.198%
16	7.662	2035	2044	2054	rBV2	25391	42676	8.92%	1.060%
17	8.135	2177	2191	2211	rBV	277680	478425	100.00%	11.880%
18	8.894	2413	2427	2442	rBV	246066	406806	85.03%	10.101%
19	10.260	2842	2852	2865	rBV2	77190	123499	25.81%	3.067%
20	11.293	3162	3173	3193	rBV	195054	322412	67.39%	8.006%
21	11.672	3277	3291	3305	rBV	181242	299786	62.66%	7.444%
22	16.755	4867	4872	4882	rVB	4265	6169	1.29%	0.153%

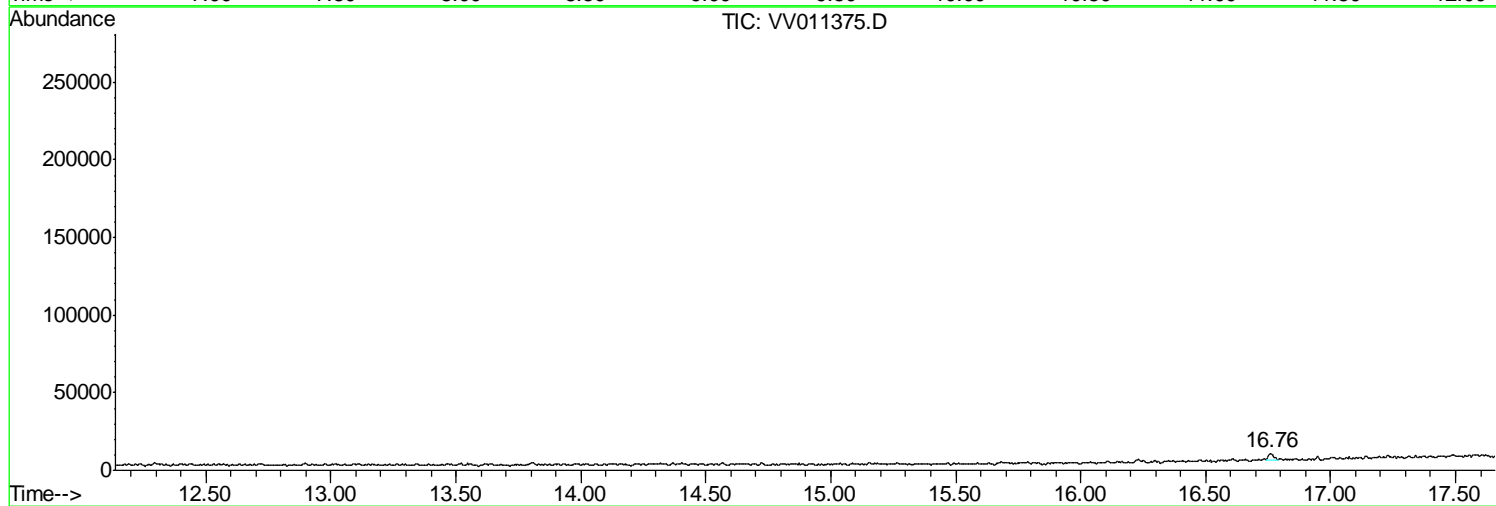
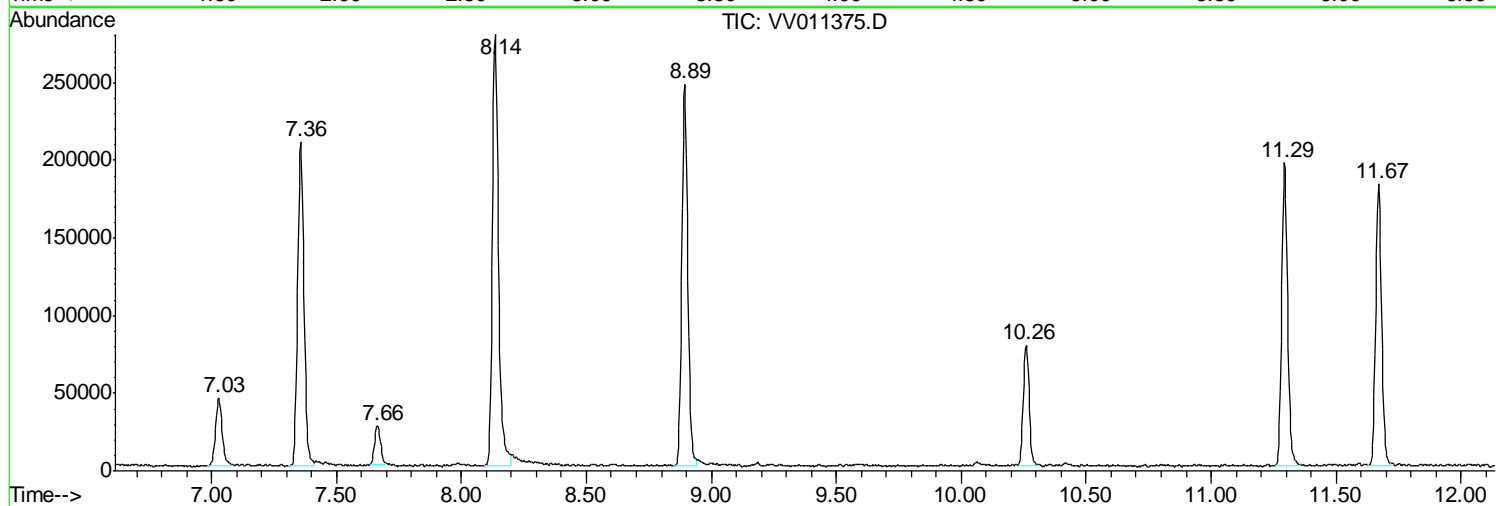
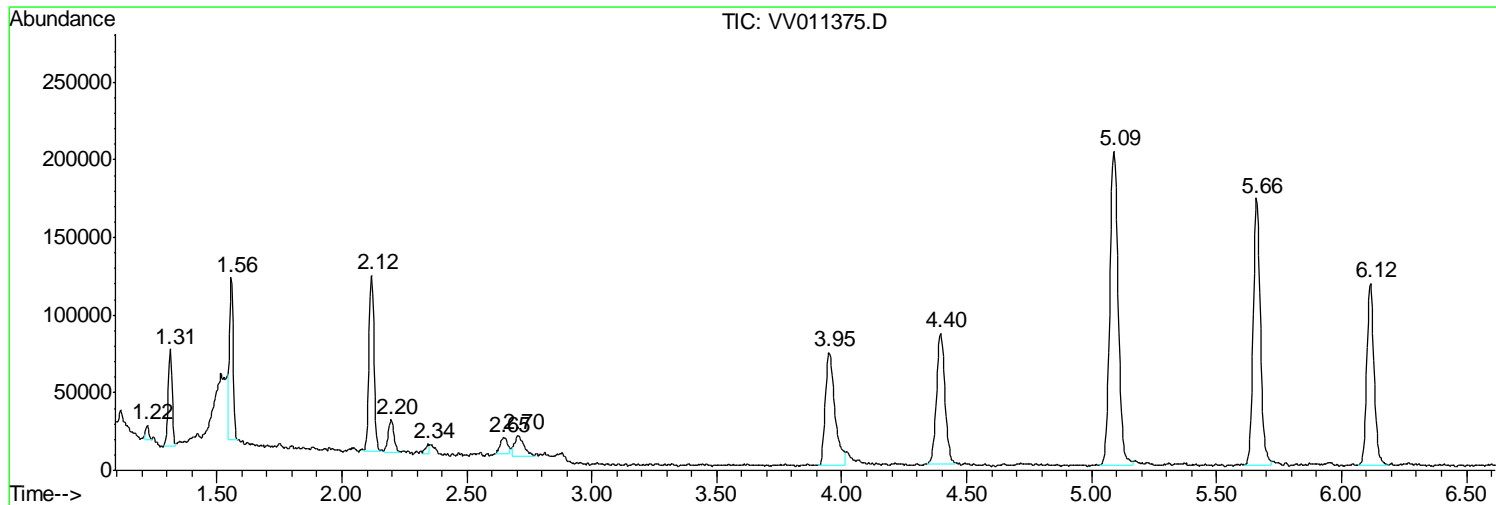
Sum of corrected areas: 4027196

Data Path : Z:\VOASRV\HPCHEM1\MSVOA V\DATA\VV061019\
Data File : VV011375.D
Acq On : 11 Jun 2019 05:03
Operator : SY/MD
Sample : K3229-10
Misc : 25ML/MSVOA V/WATER
ALS Vial : 1 Sample Multiplier: 1

Instrument :
MSVOA_V
ClientSampled :
F9P30

Quant Method : Z:\VOASRV\HPCHEM1\MSVOA_V\METHOD\SOMVTR060419WMA.M
Quant Title : TRACE VOA SOM01.0

TIC Library : C:\DATABASE\NIST11.L
TIC Integration Parameters: LSCINT.P



Data Path : Z:\VOASRV\HPCHEM1\MSVOA_V\DATA\VV061019\
Data File : VV011375.D
Acq On : 11 Jun 2019 05:03
Operator : SY/MD
Sample : K3229-10
Misc : 25ML/MSVOA_V/WATER
ALS Vial : 1 Sample Multiplier: 1

Instrument :
MSVOA_V
ClientSampleId :
F9P30

Quant Method : Z:\VOASRV\HPCHEM1\MSVOA_V\METHOD\SOMVTR060419WMA.M
Quant Title : TRACE VOA SOM01.0

TIC Library : C:\DATABASE\NIST11.L
TIC Integration Parameters: LSCINT.P

No Library Search Compounds Detected

Data Path : Z:\VOASRV\HPCHEM1\MSVOA_V\DATA\VV061019\
Data File : VV011375.D
Acq On : 11 Jun 2019 05:03
Operator : SY/MD
Sample : K3229-10
Misc : 25ML/MSVOA_V/WATER
ALS Vial : 1 Sample Multiplier: 1

Instrument :
MSVOA_V
ClientSampleId :
F9P30

Quant Method : Z:\VOASRV\HPCHEM1\MSVOA_V\METHOD\SOMVTR060419WMA.M
Quant Title : TRACE VOA SOM01.0

TIC Library : C:\DATABASE\NIST11.L
TIC Integration Parameters: LSCINT.P

TIC Top Hit name	RT	EstConc	Units	Response	--Internal Standard--			
					#	RT	Resp	Conc
