

Data Path : Z:\VOASRV\HPCHEM1\MSVOA V\DATA\VV061120\
 Data File : VV016850.D
 Acq On : 12 Jun 2020 00:46
 Operator : SY/MD
 Sample : L2915-11 200X
 Misc : 5.0mL/MSVOA V/WATER
 ALS Vial : 41 Sample Multiplier: 1

Instrument :
 MSVOA_V
 ClientSampled :

Quant Time: Jun 12 05:59:45 2020
 Quant Method : Z:\VOASRV\HPCHEM1\MSVOA_V\METHOD\SOMVLM060820WMA.M
 Quant Title : VOC Analysis
 QLast Update : Fri Jun 12 05:55:11 2020
 Response via : Initial Calibration

Internal Standards	R.T.	QIon	Response	Conc	Units	Dev(Min)
1) 1,4-Difluorobenzene	5.64	114	356443	50.00	ug/L	0.00
28) Chlorobenzene-d5	8.87	117	335214	50.00	ug/L	0.00
60) 1,4-Dichlorobenzene-d4	11.27	152	161858	50.00	ug/L	0.00

System Monitoring Compounds

4) Vinyl Chloride-d3	1.31	65	109012	43.34	ug/L	0.00
Spiked Amount	50.000	Range	60 - 135	Recovery	=	86.68%
7) Chloroethane-d5	1.56	69	70544	46.74	ug/L	0.00
Spiked Amount	50.000	Range	70 - 130	Recovery	=	93.48%
11) 1,1-Dichloroethene-d2	2.12	63	145626	34.48	ug/L	0.00
Spiked Amount	50.000	Range	60 - 125	Recovery	=	68.96%
21) 2-Butanone-d5	3.90	46	164195	88.20	ug/L	0.00
Spiked Amount	100.000	Range	40 - 130	Recovery	=	88.20%
24) Chloroform-d	4.37	84	221380	43.29	ug/L	0.00
Spiked Amount	50.000	Range	70 - 125	Recovery	=	86.58%
26) 1,2-Dichloroethane-d4	5.05	65	161009	46.28	ug/L	0.00
Spiked Amount	50.000	Range	70 - 125	Recovery	=	92.56%
32) Benzene-d6	5.07	84	434018	44.92	ug/L	0.00
Spiked Amount	50.000	Range	70 - 125	Recovery	=	89.84%
36) 1,2-Dichloropropane-d6	6.09	67	133333	44.27	ug/L	0.00
Spiked Amount	50.000	Range	70 - 120	Recovery	=	88.54%
41) Toluene-d8	7.34	98	391047	44.10	ug/L	0.00
Spiked Amount	50.000	Range	80 - 120	Recovery	=	88.20%
43) trans-1,3-Dichloropropene-	7.64	79	63423	40.43	ug/L	0.00
Spiked Amount	50.000	Range	60 - 125	Recovery	=	80.86%
47) 2-Hexanone-d5	8.11	63	100399	76.45	ug/L	0.00
Spiked Amount	100.000	Range	45 - 130	Recovery	=	76.45%
57) 1,1,2,2-Tetrachloroethane-	10.24	84	167072	41.90	ug/L	0.00
Spiked Amount	50.000	Range	65 - 120	Recovery	=	83.80%
64) 1,2-Dichlorobenzene-d4	11.65	152	161497	46.75	ug/L	0.00
Spiked Amount	50.000	Range	80 - 120	Recovery	=	93.50%

Target Compounds

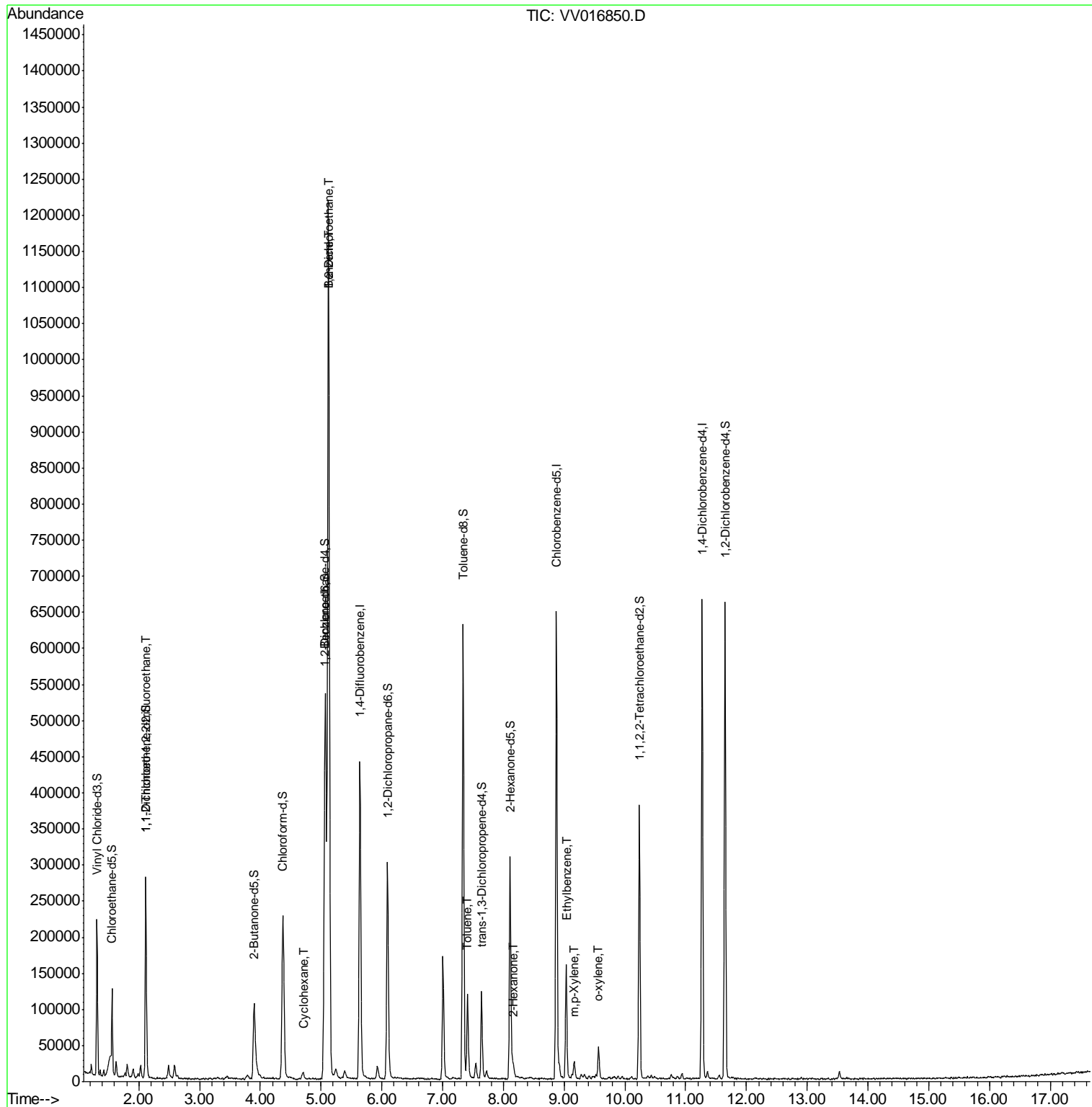
Target Compounds	R.T.	QIon	Response	Conc	Units	Ovalue
10) 1,1,2-Trichloro-1,2,2-trif	2.11	101	1265	0.668	ug/L #	19
27) 1,2-Dichloroethane	5.12	62	12038	3.078	ug/L #	74
29) Cyclohexane	4.71	56	3679	0.883	ug/L #	76
33) Benzene	5.12	78	1159734	116.932	ug/L	100
42) Toluene	7.41	91	82449	7.886	ug/L	100
48) 2-Hexanone	8.16	43	7259	2.562	ug/L #	80
52) Ethylbenzene	9.04	91	106374	9.185	ug/L	99
53) m,p-Xylene	9.16	106	6138	1.424	ug/L	94
54) o-xylene	9.57	106	11454	2.693	ug/L	92

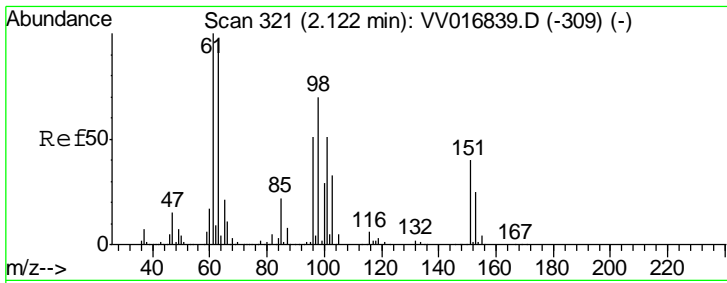
(#) = qualifier out of range (m) = manual integration (+) = signals summed

Data Path : Z:\VOASRV\HPCHEM1\MSVOA V\DATA\VV061120\
 Data File : VV016850.D
 Acq On : 12 Jun 2020 00:46
 Operator : SY/MD
 Sample : L2915-11 200X
 Misc : 5.0mL/MSVOA V/WATER
 ALS Vial : 41 Sample Multiplier: 1

Instrument :
 MSVOA_V
 ClientSampled :

Quant Time: Jun 12 05:59:45 2020
 Quant Method : Z:\VOASRV\HPCHEM1\MSVOA_V\METHOD\SOMVLM060820WMA.M
 Quant Title : VOC Analysis
 QLast Update : Fri Jun 12 05:55:11 2020
 Response via : Initial Calibration

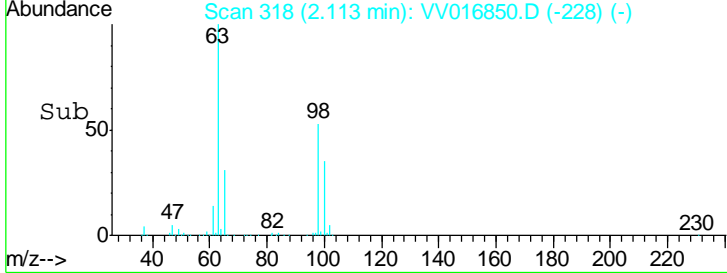
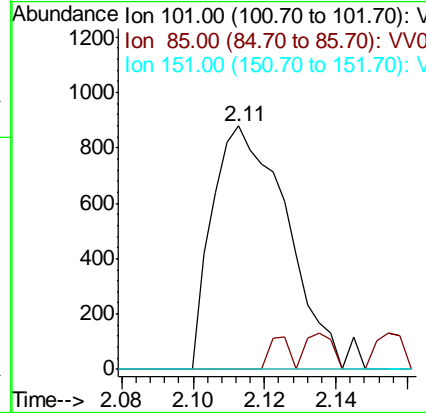
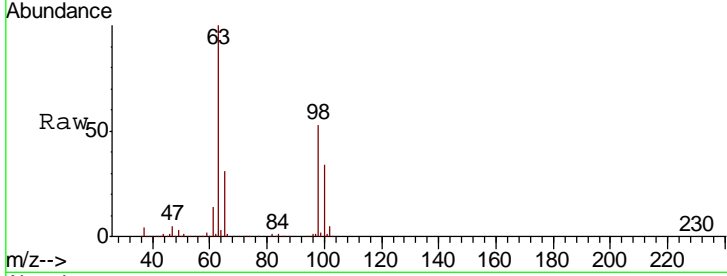




#10
 1,1,2-Trichloro-1,2,2-trifluoroethane
 Concen: 0.668 ug/L
 RT: 2.11 min Scan# 318
 Delta R.T. -0.01 min
 Lab File: VV016850.D
 Acq: 12 Jun 2020 00:46

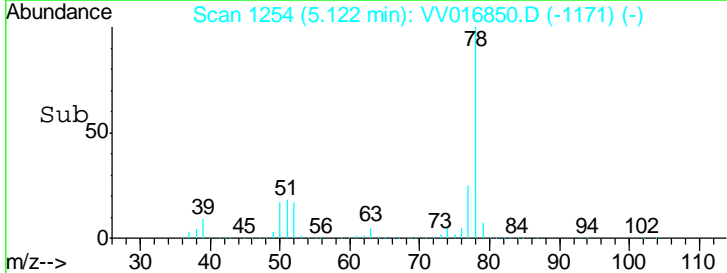
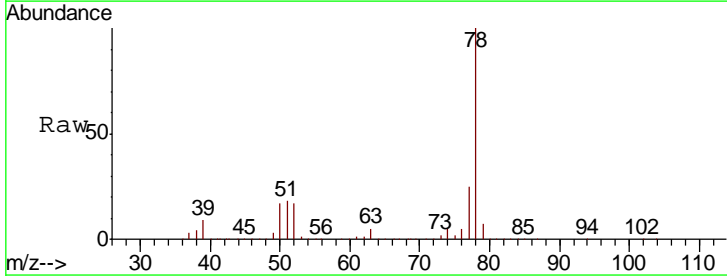
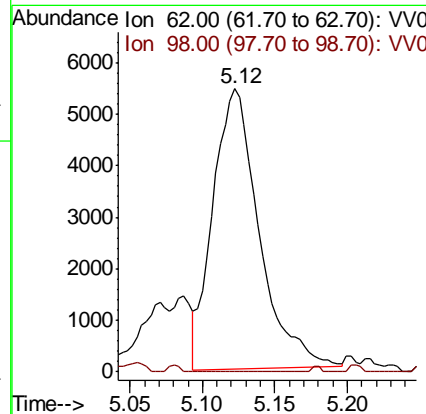
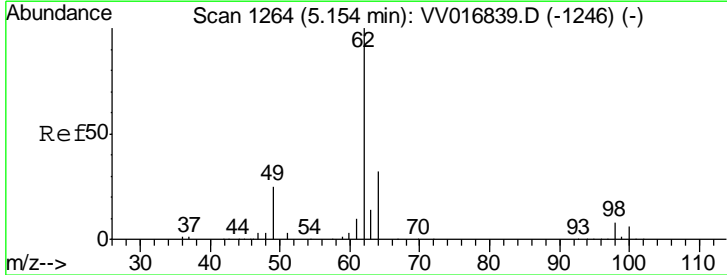
Instrument : MSVOA_V
 ClientSampled :

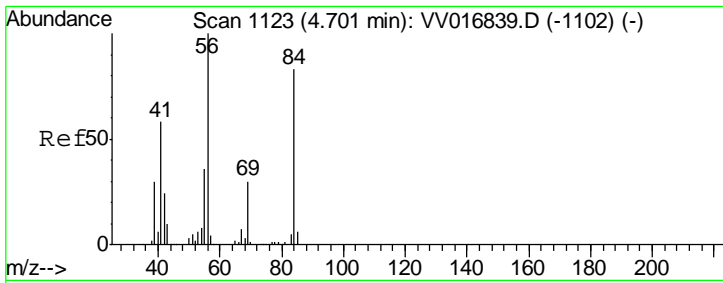
Tgt Ion	Ratio	Lower	Upper
101	100		
85	3.6	35.5	53.3#
151	0.0	63.9	95.9#



#27
 1,2-Dichloroethane
 Concen: 3.078 ug/L
 RT: 5.12 min Scan# 1254
 Delta R.T. -0.03 min
 Lab File: VV016850.D
 Acq: 12 Jun 2020 00:46

Tgt Ion	Ratio	Lower	Upper
62	100		
98	0.0	7.4	11.2#

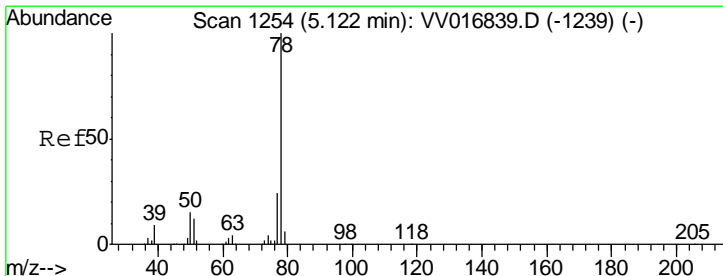
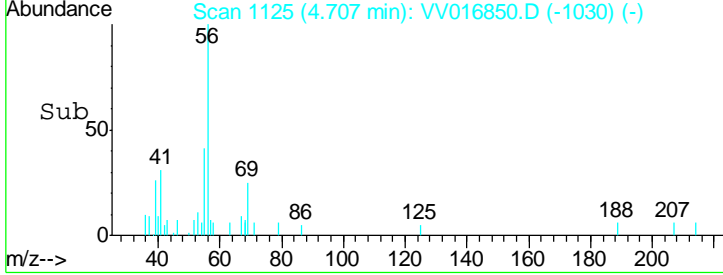
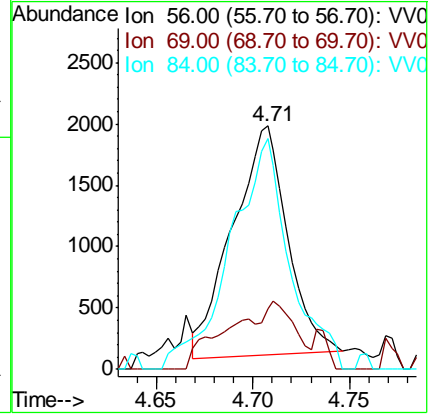
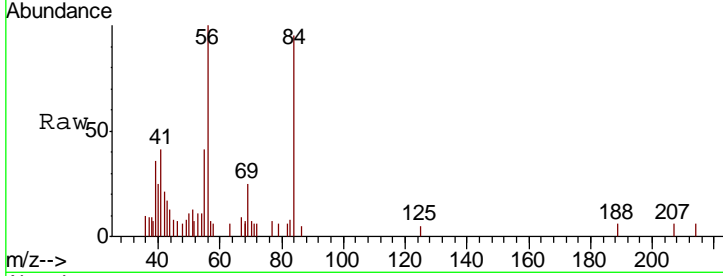




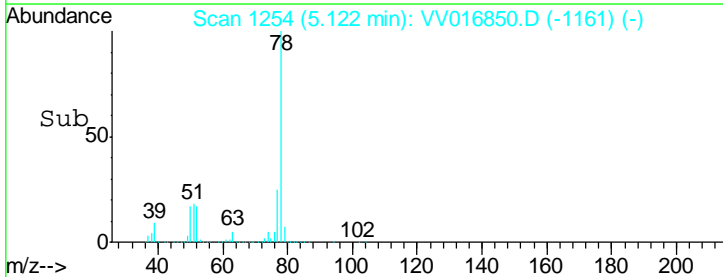
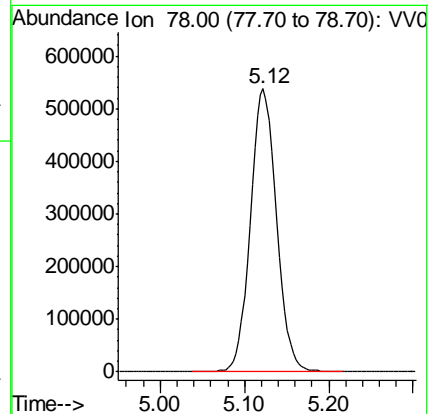
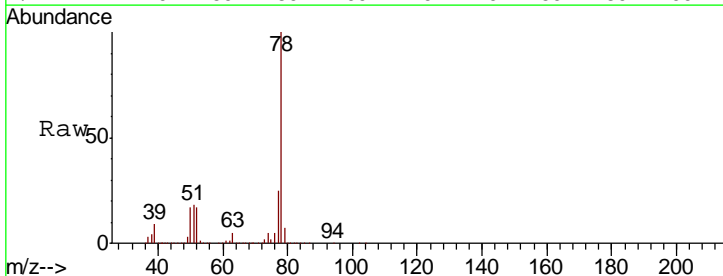
#29
 Cyclohexane
 Concen: 0.883 ug/L
 RT: 4.71 min Scan# 1125
 Delta R.T. 0.01 min
 Lab File: VV016850.D
 Acq: 12 Jun 2020 00:46

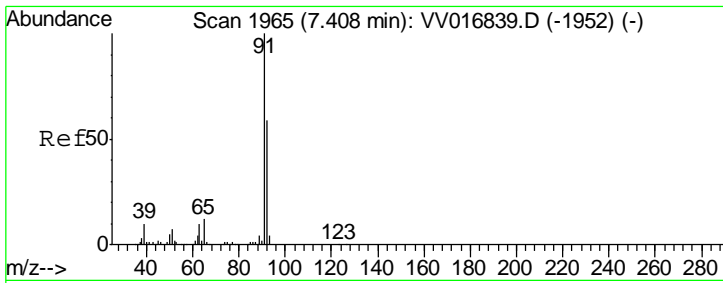
Instrument :
 MSVOA_V
 ClientSampled :

Tgt Ion	Resp	Lower	Upper
56	3679		
69	17.9	25.0	37.4#
84	109.5	69.5	104.3#



#33
 Benzene
 Concen: 116.932 ug/L
 RT: 5.12 min Scan# 1254
 Delta R.T. 0.00 min
 Lab File: VV016850.D
 Acq: 12 Jun 2020 00:46
 Tgt Ion: 78 Resp: 1159734

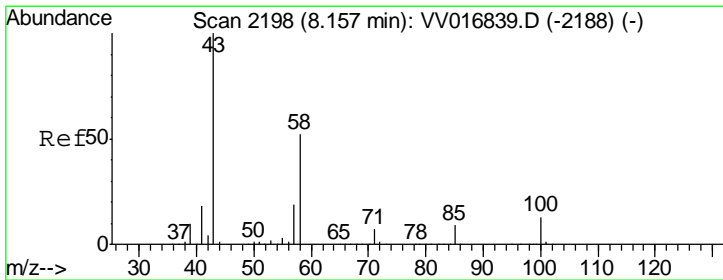
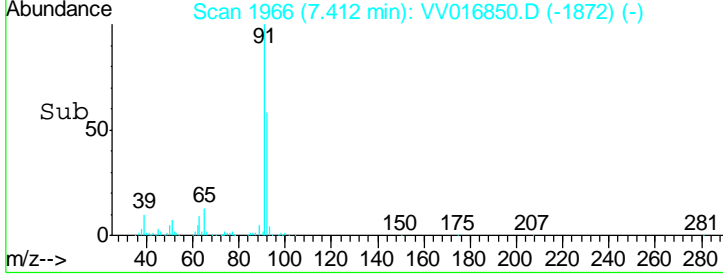
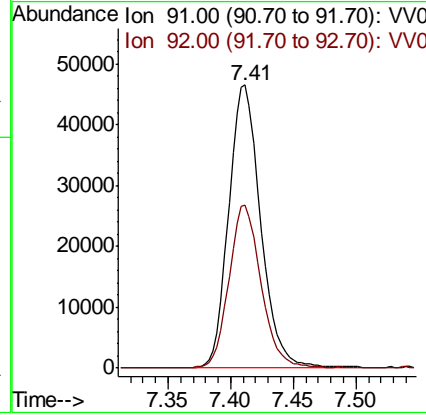
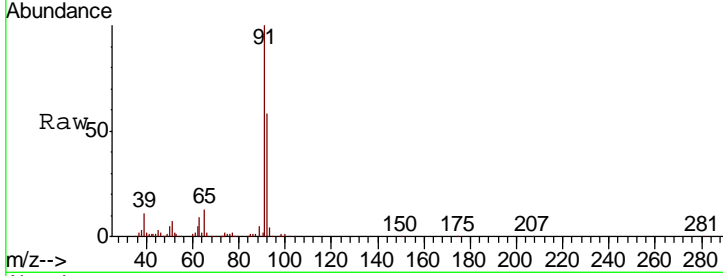




#42
 Toluene
 Concen: 7.886 ug/L
 RT: 7.41 min Scan# 1966
 Delta R.T. 0.00 min
 Lab File: VV016850.D
 Acq: 12 Jun 2020 00:46

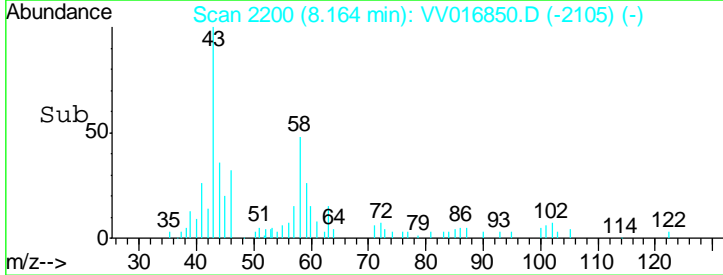
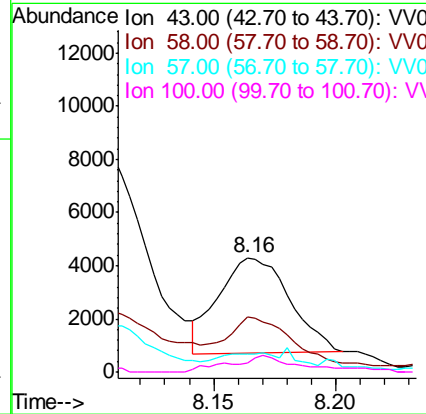
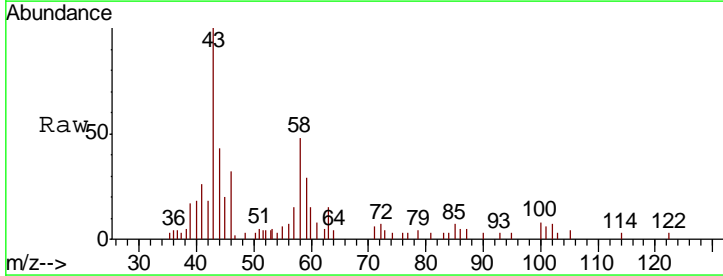
Instrument :
 MSVOA_V
 ClientSampled :

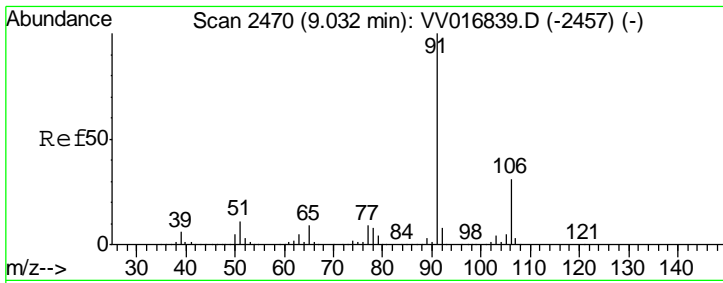
Tgt Ion	Resp	Lower	Upper
91	100		
92	57.6	40.4	75.0



#48
 2-Hexanone
 Concen: 2.562 ug/L
 RT: 8.16 min Scan# 2200
 Delta R.T. 0.01 min
 Lab File: VV016850.D
 Acq: 12 Jun 2020 00:46

Tgt Ion	Resp	Lower	Upper
43	100		
58	41.7	43.1	64.7#
57	4.2	15.3	22.9#
100	7.6	10.0	15.0#

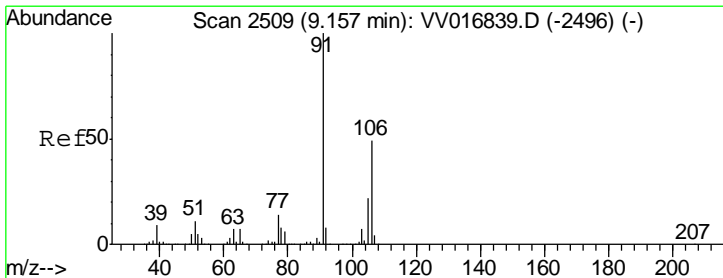
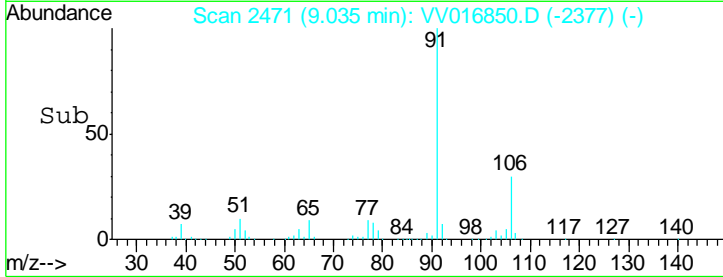
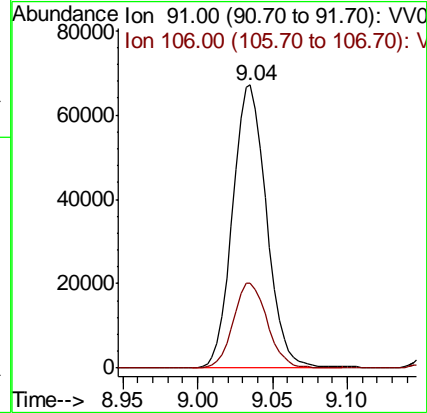
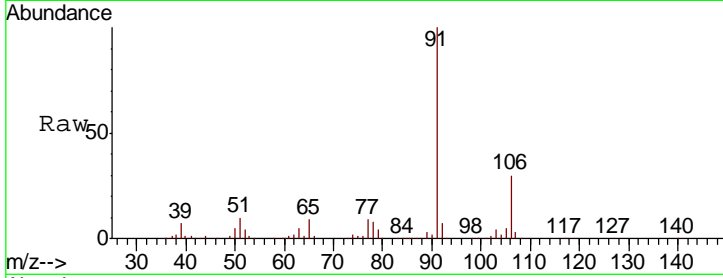




#52
Ethylbenzene
Concen: 9.185 ug/L
RT: 9.04 min Scan# 2471
Delta R.T. 0.00 min
Lab File: VV016850.D
Acq: 12 Jun 2020 00:46

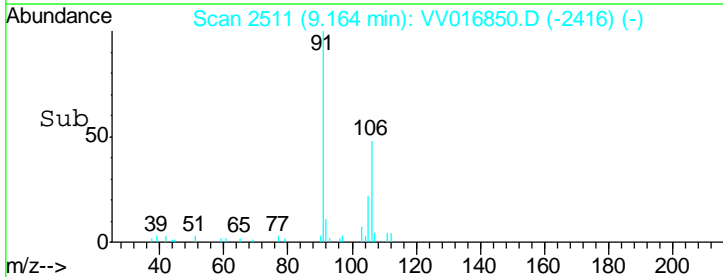
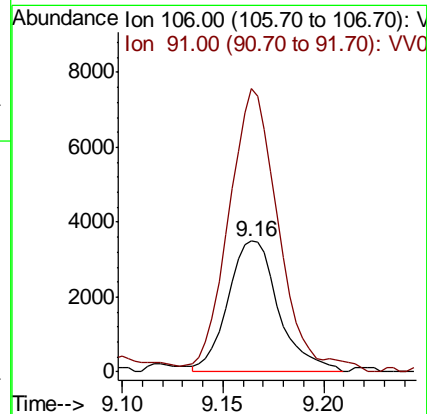
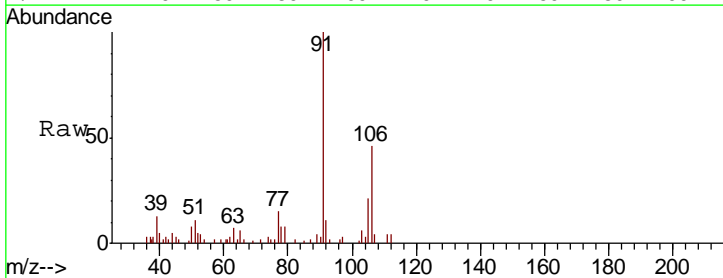
Instrument :
MSVOA_V
ClientSampled :

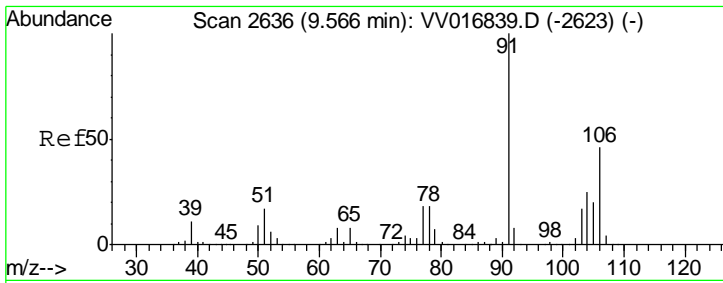
Tgt Ion	Resp	Lower	Upper
91	106374		
106	29.8	21.1	39.1



#53
m,p-Xylene
Concen: 1.424 ug/L
RT: 9.16 min Scan# 2511
Delta R.T. 0.01 min
Lab File: VV016850.D
Acq: 12 Jun 2020 00:46

Tgt Ion	Resp	Lower	Upper
106	6138		
91	216.6	144.6	268.6





#54
 o-xylene
 Concen: 2.693 ug/L
 RT: 9.57 min Scan# 2636
 Delta R.T. 0.00 min
 Lab File: VV016850.D
 Acq: 12 Jun 2020 00:46

Instrument :
 MSVOA_V
 ClientSampled :

Tot Ion	106	Resp	11454
Ion	Ratio	Lower	Upper
106	100		
91	209.6	155.9	289.5

