

Data Path : Z:\VOASRV\HPCHEM1\MSVOA_V\DATA\VV061120\
 Data File : VV016818.D
 Acq On : 11 Jun 2020 11:47
 Operator : SY/MD
 Sample : L2929-03
 Misc : 5.0mL/MSVOA_V/WATER
 ALS Vial : 8 Sample Multiplier: 1

Instrument :
 MSVOA_V
 ClientSampleId :
 ETTW1

Integration Parameters: LSCINT.P

Integrator: RTE
 Smoothing : OFF
 Sampling : 1
 Start Thrs: 0.2
 Stop Thrs : 0

Filtering: 5
 Min Area: 0 % of largest Peak
 Max Peaks: 100
 Peak Location: TOP

If leading or trailing edge < 100 prefer < Baseline drop else tangent >
 Peak separation: 5

Method : Z:\VOASRV\HPCHEM1\MSVOA_V\METHOD\SOMVLM060820WMA.M
 Title : VOC Analysis

Signal : TIC

peak #	R.T. min	first scan	max scan	last scan	PK TY	peak height	corr. area	corr. % max.	% of total
1	1.312	64	69	78	rVB	155301	155261	11.74%	1.506%
2	1.560	141	146	160	rVB	111256	136046	10.29%	1.319%
3	2.116	310	319	331	rVB	253499	366941	27.76%	3.558%
4	3.248	667	671	673	rBV5	1283	936	0.07%	0.009%
5	3.273	676	679	680	rBV3	1463	844	0.06%	0.008%
6	3.299	685	687	689	rBV3	1779	746	0.06%	0.007%
7	3.331	691	697	699	rBV7	1746	1483	0.11%	0.014%
8	3.412	720	722	727	rVV6	1735	1018	0.08%	0.010%
9	3.492	743	747	752	rVB7	1456	1307	0.10%	0.013%
10	3.515	752	754	755	rBV	1546	625	0.05%	0.006%
11	3.566	768	770	773	rVV3	1585	788	0.06%	0.008%
12	3.753	824	828	831	rVV4	2304	1480	0.11%	0.014%
13	3.827	841	851	862	rBV2	18468	44502	3.37%	0.432%
14	3.894	863	872	903	rVB	108896	284487	21.52%	2.759%
15	4.183	957	962	963	rBV4	2341	1708	0.13%	0.017%
16	4.238	977	979	984	rVB6	1528	1200	0.09%	0.012%
17	4.373	1007	1021	1047	rVB	217363	526259	39.81%	5.103%
18	4.653	1106	1108	1110	rVB3	2016	794	0.06%	0.008%
19	4.669	1110	1113	1116	rBV4	1199	731	0.06%	0.007%
20	4.913	1186	1189	1191	rBV4	1198	647	0.05%	0.006%
21	4.978	1206	1209	1215	rVB6	2131	1947	0.15%	0.019%
22	5.003	1215	1217	1220	rBV3	1002	805	0.06%	0.008%
23	5.071	1220	1238	1266	rBV2	510115	1321978	100.00%	12.820%
24	5.553	1383	1388	1394	rBV8	2917	3668	0.28%	0.036%
25	5.640	1402	1415	1433	rBV	414503	821439	62.14%	7.966%
26	6.093	1540	1556	1580	rBV2	295197	598754	45.29%	5.806%
27	6.576	1704	1706	1707	rBV3	1394	695	0.05%	0.007%
28	6.736	1752	1756	1760	rBV5	1845	1759	0.13%	0.017%
29	6.785	1768	1771	1775	rBV3	1017	740	0.06%	0.007%
30	6.804	1775	1777	1780	rBV4	1123	735	0.06%	0.007%
31	6.846	1786	1790	1793	rBV5	1163	1174	0.09%	0.011%
32	6.862	1793	1795	1799	rVB4	1228	729	0.06%	0.007%
33	6.942	1815	1820	1822	rBV5	2177	1723	0.13%	0.017%
34	7.006	1829	1840	1860	rBV	171475	305626	23.12%	2.964%

Data Path : Z:\VOASRV\HPCHEM1\MSVOA_V\DATA\VV061120\
 Data File : VV016818.D
 Acq On : 11 Jun 2020 11:47
 Operator : SY/MD
 Sample : L2929-03
 Misc : 5.0mL/MSVOA_V/WATER
 ALS Vial : 8 Sample Multiplier: 1

Instrument :
 MSVOA_V
 ClientSampleId :
 ETTW1

Integration Parameters: LSCINT.P

Integrator: RTE
 Smoothing : OFF
 Sampling : 1
 Start Thrs: 0.2
 Stop Thrs : 0

Filtering: 5
 Min Area: 0 % of largest Peak
 Max Peaks: 100
 Peak Location: TOP

If leading or trailing edge < 100 prefer < Baseline drop else tangent >
 Peak separation: 5

Method : Z:\VOASRV\HPCHEM1\MSVOA_V\METHOD\SOMVLM060820WMA.M
 Title : VOC Analysis

35	7.228	1907	1909	1911	rBV3	1571	938	0.07%	0.009%
36	7.338	1929	1943	1959	rBV	605042	1042953	78.89%	10.114%
37	7.640	2027	2037	2055	rBV2	120763	207362	15.69%	2.011%
38	7.814	2088	2091	2093	rVV4	1615	831	0.06%	0.008%
39	7.920	2121	2124	2126	rBV4	1078	710	0.05%	0.007%
40	8.032	2156	2159	2160	rBV3	1299	716	0.05%	0.007%
41	8.106	2172	2182	2214	rBV	341387	642920	48.63%	6.235%
42	8.498	2302	2304	2307	rBV3	1267	793	0.06%	0.008%
43	8.540	2315	2317	2322	rVB4	1495	1169	0.09%	0.011%
44	8.566	2322	2325	2332	rBV8	2071	2436	0.18%	0.024%
45	8.630	2343	2345	2346	rBV2	1775	734	0.06%	0.007%
46	8.682	2359	2361	2364	rVB3	2065	1192	0.09%	0.012%
47	8.704	2364	2368	2371	rBV5	1739	1925	0.15%	0.019%
48	8.813	2400	2402	2406	rBV5	1067	857	0.06%	0.008%
49	8.875	2409	2421	2439	rVV	627608	1020298	77.18%	9.894%
50	9.045	2468	2474	2478	rBV8	2630	3279	0.25%	0.032%
51	9.434	2592	2595	2596	rBV3	1357	726	0.05%	0.007%
52	9.646	2659	2661	2663	rBV3	1419	826	0.06%	0.008%
53	9.723	2682	2685	2686	rBV3	1660	1049	0.08%	0.010%
54	9.936	2747	2751	2753	rVB4	1484	881	0.07%	0.009%
55	10.035	2775	2782	2791	rBV4	4318	7402	0.56%	0.072%
56	10.087	2795	2798	2800	rVV3	1353	841	0.06%	0.008%
57	10.122	2803	2809	2810	rBV6	1579	1224	0.09%	0.012%
58	10.180	2821	2827	2832	rBV9	1736	2051	0.16%	0.020%
59	10.238	2833	2845	2859	rBV	408213	638394	48.29%	6.191%
60	10.370	2883	2886	2887	rBV3	1415	824	0.06%	0.008%
61	10.453	2910	2912	2919	rBV8	1375	1222	0.09%	0.012%
62	10.720	2991	2995	2996	rBV4	1282	847	0.06%	0.008%
63	10.797	3018	3019	3023	rVB4	1151	747	0.06%	0.007%
64	11.026	3087	3090	3092	rVB5	1272	659	0.05%	0.006%
65	11.038	3092	3094	3098	rBV5	965	846	0.06%	0.008%
66	11.135	3121	3124	3128	rBV5	1680	1017	0.08%	0.010%
67	11.177	3135	3137	3140	rBV3	1477	874	0.07%	0.008%
68	11.270	3155	3166	3184	rBV	673538	1031872	78.06%	10.007%
69	11.646	3272	3283	3304	rVB	682833	1067334	80.74%	10.351%
70	11.784	3323	3326	3329	rBV4	1413	1062	0.08%	0.010%
71	11.874	3352	3354	3357	rBV3	1374	935	0.07%	0.009%

Data Path : Z:\VOASRV\HPCHEM1\MSVOA_V\DATA\VV061120\
 Data File : VV016818.D
 Acq On : 11 Jun 2020 11:47
 Operator : SY/MD
 Sample : L2929-03
 Misc : 5.0mL/MSVOA_V/WATER
 ALS Vial : 8 Sample Multiplier: 1

Instrument :
 MSVOA_V
 ClientSampleId :
 ETTW1

Integration Parameters: LSCINT.P

Integrator: RTE
 Smoothing : OFF
 Sampling : 1
 Start Thrs: 0.2
 Stop Thrs : 0

Filtering: 5
 Min Area: 0 % of largest Peak
 Max Peaks: 100
 Peak Location: TOP

If leading or trailing edge < 100 prefer < Baseline drop else tangent >
 Peak separation: 5

Method : Z:\VOASRV\HPCHEM1\MSVOA_V\METHOD\SOMVLM060820WMA.M
 Title : VOC Analysis

72	11.984	3386	3388	3389	rBV2	1535	708	0.05%	0.007%
73	12.100	3421	3424	3425	rBV3	1388	672	0.05%	0.007%
74	12.180	3443	3449	3454	rBV8	1960	2581	0.20%	0.025%
75	12.218	3459	3461	3463	rBV3	1363	649	0.05%	0.006%
76	12.257	3471	3473	3476	rBV4	1044	756	0.06%	0.007%
77	12.292	3481	3484	3487	rBV3	1275	837	0.06%	0.008%
78	12.370	3505	3508	3509	rBV3	1314	824	0.06%	0.008%
79	12.392	3512	3515	3518	rVV5	1617	1316	0.10%	0.013%
80	12.550	3562	3564	3567	rBV4	985	649	0.05%	0.006%
81	12.678	3601	3604	3607	rBV4	1174	771	0.06%	0.007%
82	12.720	3613	3617	3618	rBV3	1343	768	0.06%	0.007%
83	12.855	3656	3659	3663	rVB4	1978	1361	0.10%	0.013%
84	12.948	3684	3688	3691	rVB5	1583	1360	0.10%	0.013%
85	12.971	3693	3695	3697	rBV2	1778	899	0.07%	0.009%
86	13.080	3726	3729	3734	rBV6	1576	1443	0.11%	0.014%
87	13.112	3737	3739	3741	rBV2	1140	639	0.05%	0.006%
88	13.157	3751	3753	3756	rBV4	1667	1182	0.09%	0.011%
89	13.434	3836	3839	3843	rBV5	1705	1383	0.10%	0.013%
90	13.501	3857	3860	3861	rBV4	1605	971	0.07%	0.009%
91	13.685	3915	3917	3920	rVB3	1299	696	0.05%	0.007%
92	13.839	3960	3965	3968	rVB6	1676	1546	0.12%	0.015%
93	13.881	3976	3978	3986	rVB8	1706	1395	0.11%	0.014%
94	13.984	4004	4010	4011	rBV4	1549	1336	0.10%	0.013%
95	14.087	4038	4042	4044	rVB4	1561	931	0.07%	0.009%
96	14.411	4140	4143	4145	rBV3	1386	833	0.06%	0.008%
97	14.816	4266	4269	4272	rBV5	2498	1539	0.12%	0.015%
98	14.897	4290	4294	4296	rBV4	1413	1230	0.09%	0.012%
99	15.254	4402	4405	4406	rBV3	1586	957	0.07%	0.009%
100	15.787	4569	4571	4574	rBV4	2254	1337	0.10%	0.013%

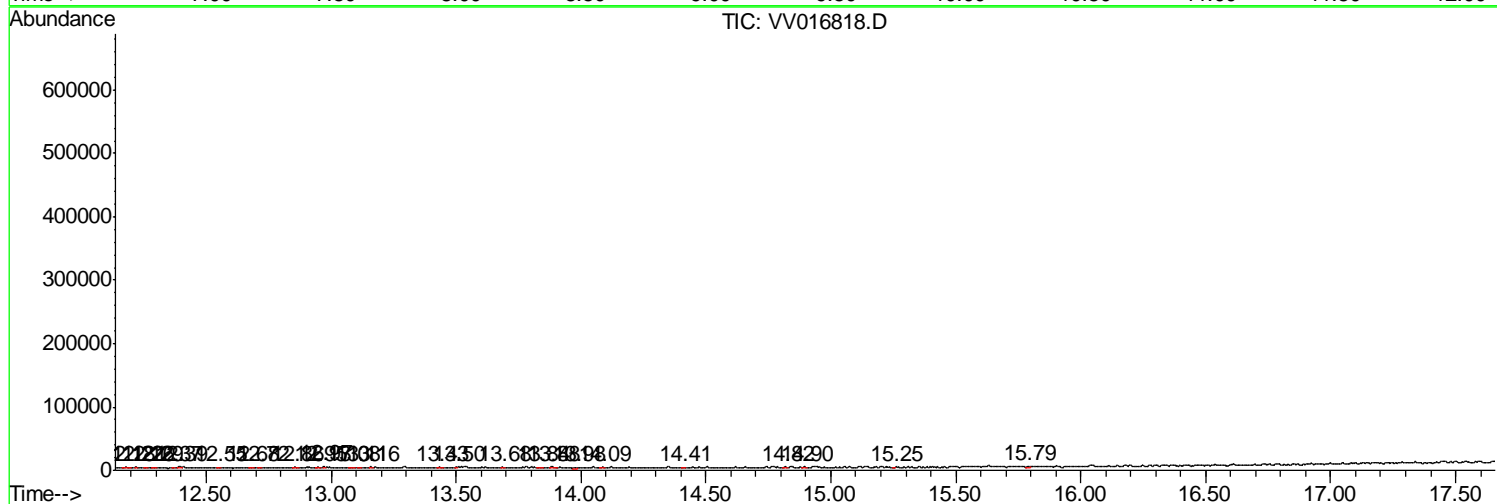
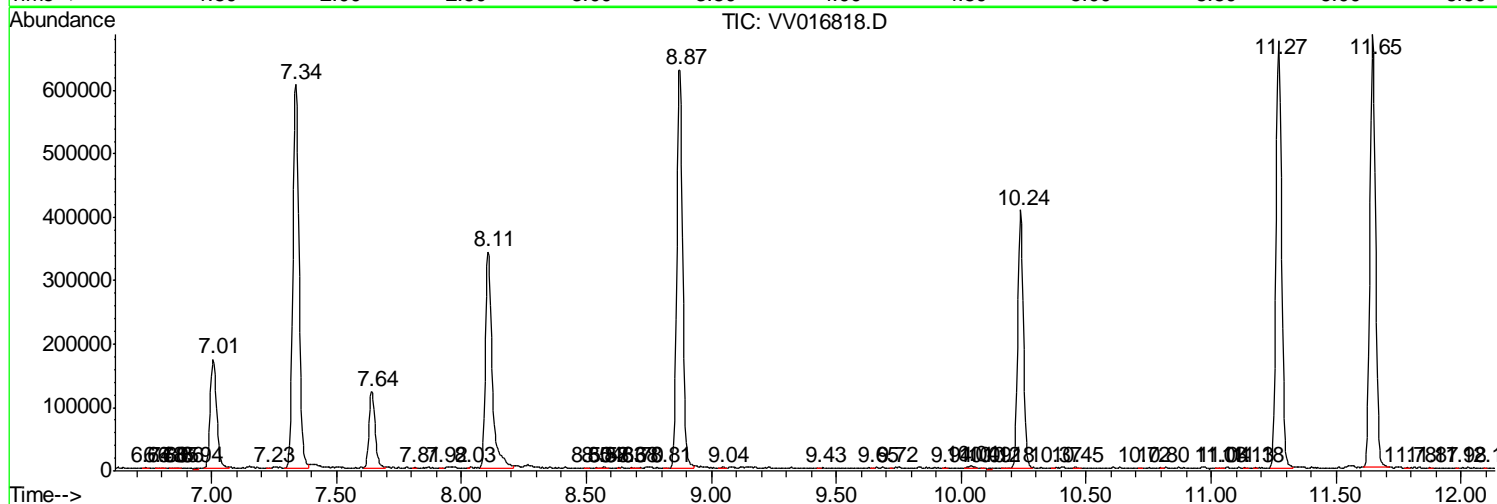
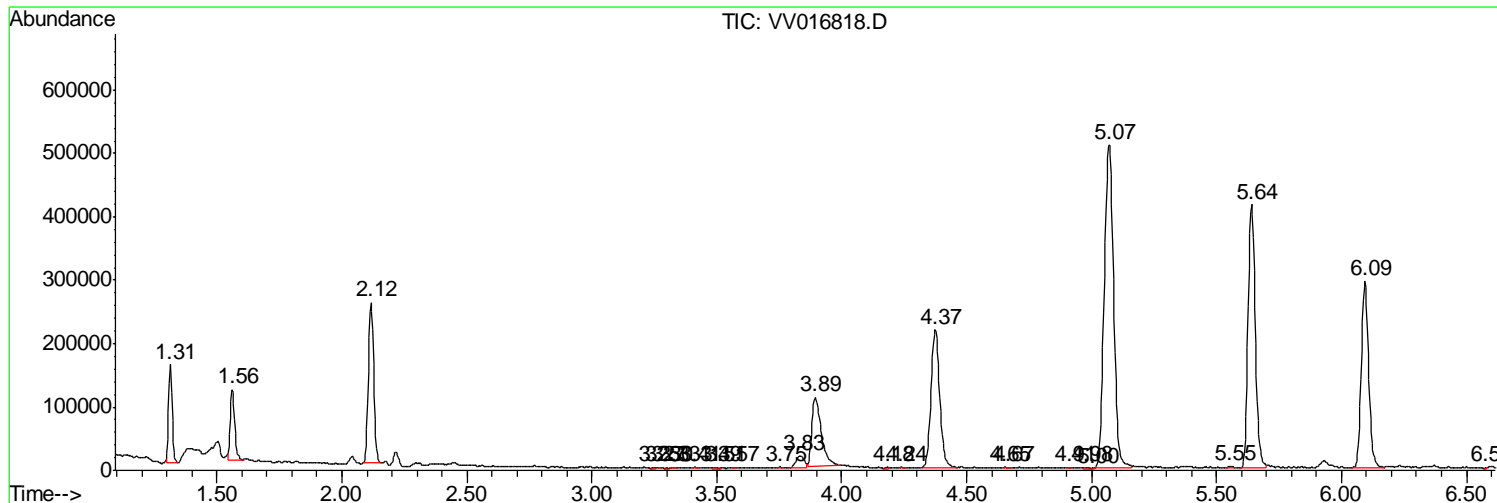
Sum of corrected areas: 10311890

Data Path : Z:\VOASRV\HPCHEM1\MSVOA_V\DATA\VV061120\
 Data File : VV016818.D
 Acq On : 11 Jun 2020 11:47
 Operator : SY/MD
 Sample : L2929-03
 Misc : 5.0mL/MSVOA_V/WATER
 ALS Vial : 8 Sample Multiplier: 1

Instrument :
 MSVOA_V
 Client Sampled :
 ETTW1

Quant Method : Z:\VOASRV\HPCHEM1\MSVOA_V\METHOD\SOMVLM060820WMA.M
 Quant Title : VOC Analysis

TIC Library : C:\DATABASE\NIST11.L
 TIC Integration Parameters: LSCINT.P



Data Path : Z:\VOASRV\HPCHEM1\MSVOA_V\DATA\VV061120\
 Data File : VV016818.D
 Acq On : 11 Jun 2020 11:47
 Operator : SY/MD
 Sample : L2929-03
 Misc : 5.0mL/MSVOA_V/WATER
 ALS Vial : 8 Sample Multiplier: 1

Instrument :
 MSVOA_V
 ClientSampled :
 ETTW1

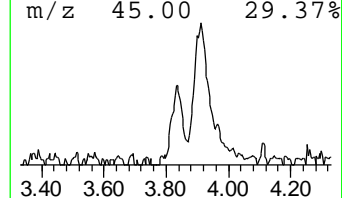
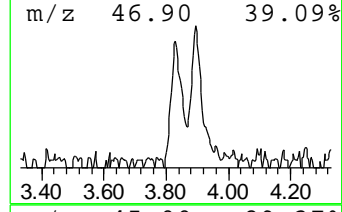
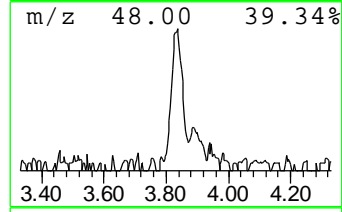
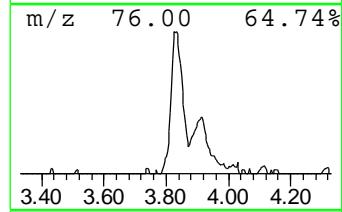
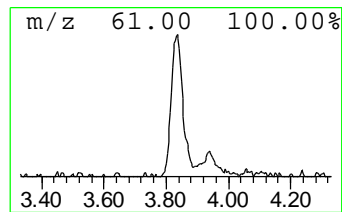
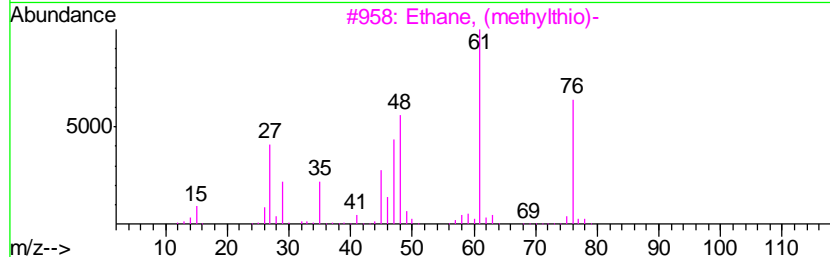
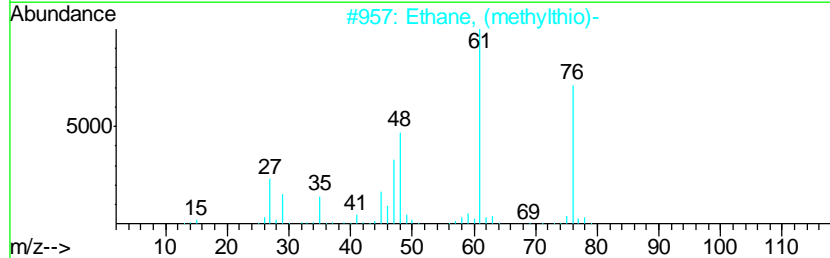
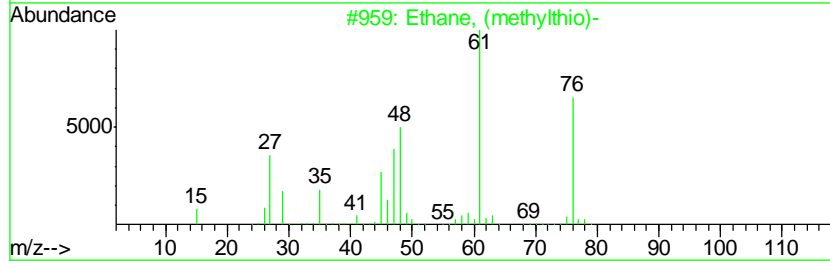
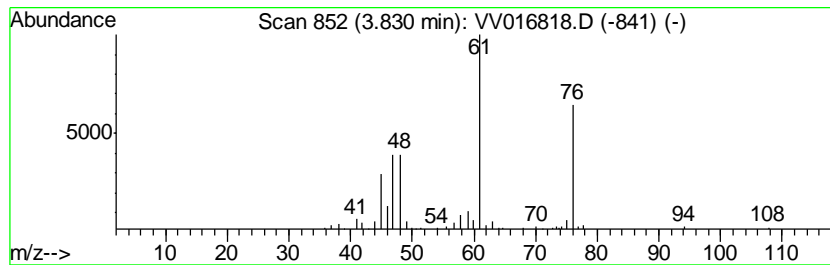
Quant Method : Z:\VOASRV\HPCHEM1\MSVOA_V\METHOD\SOMVLM060820WMA.M
 Quant Title : VOC Analysis

TIC Library : C:\DATABASE\NIST11.L
 TIC Integration Parameters: LSCINT.P

 Peak Number 1 Ethane, (methylthio)- Concentration Rank 2

R.T.	EstConc	Area	Relative to ISTD	R.T.
3.83	2.71 ug/L	44502	1,4-Difluorobenzene	5.64

Hit#	of	Tentative ID	MW	MolForm	CAS#	Qual
1	5	Ethane, (methylthio)-	76	C3H8S	000624-89-5	95
2		Ethane, (methylthio)-	76	C3H8S	000624-89-5	94
3		Ethane, (methylthio)-	76	C3H8S	000624-89-5	91
4		Propane, 1-(methylthio)-	90	C4H10S	003877-15-4	53
5		Propane, 1-(methylthio)-	90	C4H10S	003877-15-4	50



Data Path : Z:\VOASRV\HPCHEM1\MSVOA_V\DATA\VV061120\
Data File : VV016818.D
Acq On : 11 Jun 2020 11:47
Operator : SY/MD
Sample : L2929-03
Misc : 5.0mL/MSVOA_V/WATER
ALS Vial : 8 Sample Multiplier: 1

Instrument :
MSVOA_V
ClientSampleId :
ETTW1

Quant Method : Z:\VOASRV\HPCHEM1\MSVOA_V\METHOD\SOMVLM060820WMA.M
Quant Title : VOC Analysis

TIC Library : C:\DATABASE\NIST11.L
TIC Integration Parameters: LSCINT.P

TIC Top Hit name	RT	EstConc	Units	Response	--Internal Standard--			
					#	RT	Resp	Conc
Ethane, (methylth...	3.83	2.7	ug/L	44502	1	5.64	821439	50.0