

Data Path : Z:\voasrv\HPCHEM1\MSVOA\_V\Data\VW061122\  
 Data File : VW026131.D  
 Acq On : 11 Jun 2022 15:44  
 Operator : SY/MD  
 Sample : VIBLK  
 Misc : 25mL/MSVOA\_V/WATER  
 ALS Vial : 17 Sample Multiplier: 1

Instrument :  
 MSVOA\_V  
 ClientSampleId :

Quant Time: Jun 13 01:20:01 2022  
 Quant Method : Z:\voasrv\HPCHEM1\MSVOA\_V\Method\SFAMVTR060822WMA.M  
 Quant Title : TRACE VOA SFAM1.0  
 QLast Update : Mon Jun 13 01:15:38 2022  
 Response via : Initial Calibration

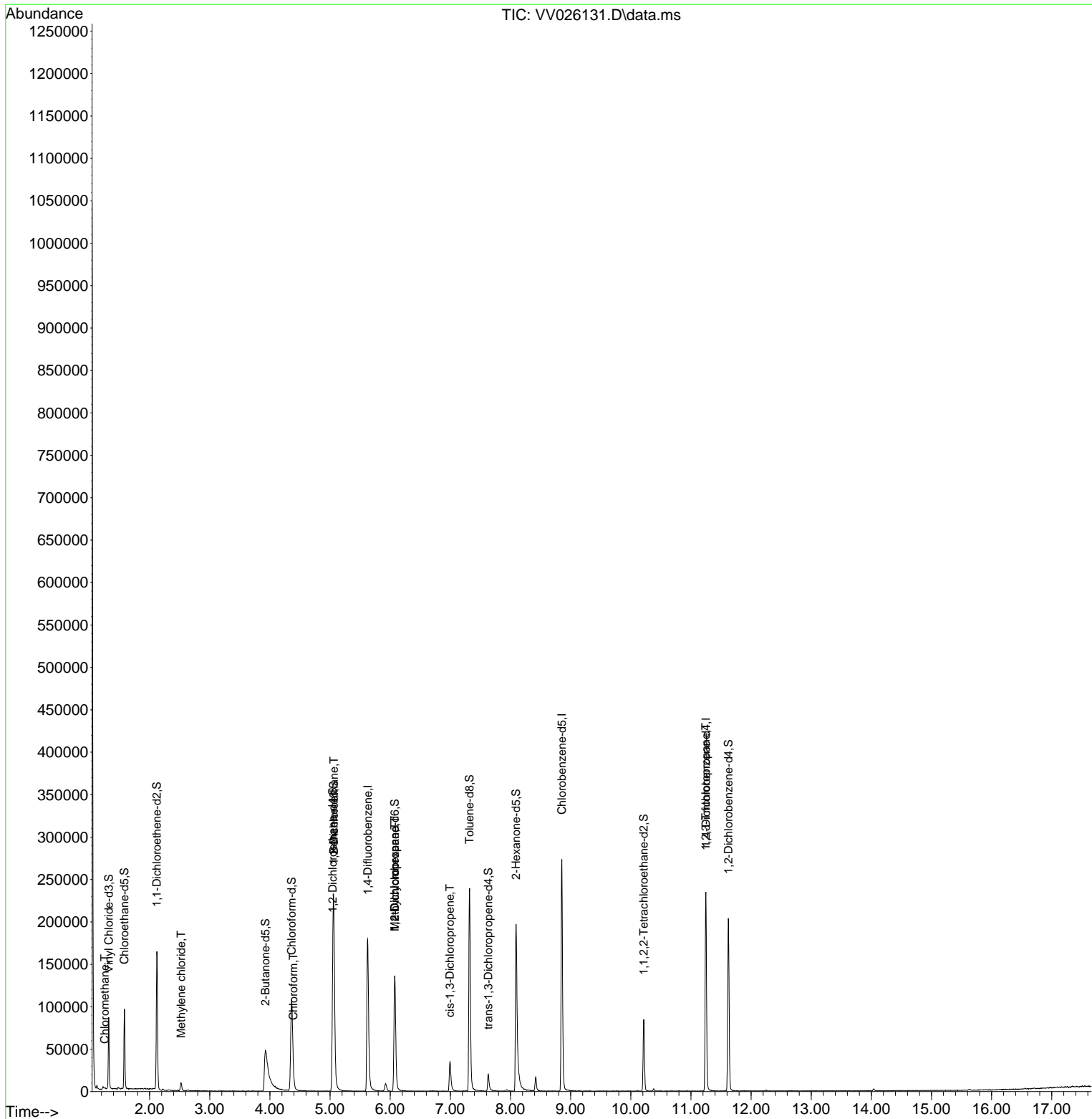
Compound	R.T.	QIon	Response	Conc	Units	Dev(Min)
-----						
Internal Standards						
1) 1,4-Difluorobenzene	5.625	114	163670	5.000	ug/L	0.00
28) Chlorobenzene-d5	8.854	117	155795	5.000	ug/L	0.00
58) 1,4-Dichlorobenzene-d4	11.249	152	62480	5.000	ug/L	0.00
System Monitoring Compounds						
4) Vinyl Chloride-d3	1.320	65	54414	5.664	ug/L	0.00
Spiked Amount	5.000	Range 40 - 130	Recovery	=	113.200%	
7) Chloroethane-d5	1.581	69	59839	5.957	ug/L	0.00
Spiked Amount	5.000	Range 65 - 130	Recovery	=	119.200%	
11) 1,1-Dichloroethene-d2	2.121	63	86631	3.904	ug/L	0.00
Spiked Amount	5.000	Range 60 - 125	Recovery	=	78.000%	
20) 2-Butanone-d5	3.925	46	94764	66.688	ug/L	0.00
Spiked Amount	50.000	Range 40 - 130	Recovery	=	133.380%#	
24) Chloroform-d	4.362	84	114310	5.614	ug/L	0.00
Spiked Amount	5.000	Range 70 - 125	Recovery	=	112.200%	
26) 1,2-Dichloroethane-d4	5.043	65	49428	5.951	ug/L	0.00
Spiked Amount	5.000	Range 70 - 130	Recovery	=	119.000%	
32) Benzene-d6	5.060	84	215929	5.736	ug/L	0.00
Spiked Amount	5.000	Range 70 - 125	Recovery	=	114.800%	
36) 1,2-Dichloropropane-d6	6.076	67	69243	5.945	ug/L	0.00
Spiked Amount	5.000	Range 60 - 140	Recovery	=	119.000%	
41) Toluene-d8	7.320	98	166215	4.996	ug/L	0.00
Spiked Amount	5.000	Range 70 - 130	Recovery	=	100.000%	
43) trans-1,3-Dichloroprop...	7.632	79	12900	3.762	ug/L	0.00
Spiked Amount	5.000	Range 55 - 130	Recovery	=	75.200%	
46) 2-Hexanone-d5	8.092	63	69088	45.784	ug/L	0.00
Spiked Amount	50.000	Range 45 - 130	Recovery	=	91.560%	
56) 1,1,2,2-Tetrachloroeth...	10.217	84	41363	5.267	ug/L	0.00
Spiked Amount	5.000	Range 65 - 120	Recovery	=	105.400%	
66) 1,2-Dichlorobenzene-d4	11.622	152	55371	5.793	ug/L	0.00
Spiked Amount	5.000	Range 80 - 120	Recovery	=	115.800%	
-----						
Target Compounds						Qvalue
3) Chloromethane	1.253	50	778	0.043	ug/L	92
16) Methylene chloride	2.523	84	4067	0.310	ug/L	93
25) Chloroform	4.391	83	2746	0.118	ug/L	80
27) 1,2-Dichloroethane	5.063	62	1291	0.113	ug/L #	72
35) Methylcyclohexane	6.076	83	16913	0.858	ug/L #	19
37) 1,2-Dichloropropane	6.076	63	7457	0.628	ug/L #	86
39) cis-1,3-Dichloropropene	6.992	75	1140	0.078	ug/L	95
61) 1,2,3-Trichloropropane	11.246	75	7745	1.588	ug/L #	63
-----						

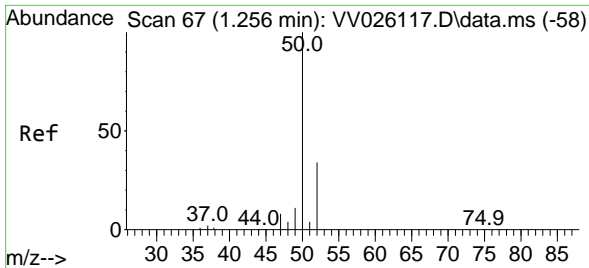
(#) = qualifier out of range (m) = manual integration (+) = signals summed

Data Path : Z:\voasrv\HPCHEM1\MSVOA\_V\Data\VV061122\  
 Data File : VV026131.D  
 Acq On : 11 Jun 2022 15:44  
 Operator : SY/MD  
 Sample : VIBLK  
 Misc : 25mL/MSVOA\_V/WATER  
 ALS Vial : 17 Sample Multiplier: 1

Instrument :  
 MSVOA\_V  
 ClientSampleId :

Quant Time: Jun 13 01:20:01 2022  
 Quant Method : Z:\voasrv\HPCHEM1\MSVOA\_V\Method\SFAMVTR060822WMA.M  
 Quant Title : TRACE VOA SFAM1.0  
 QLast Update : Mon Jun 13 01:15:38 2022  
 Response via : Initial Calibration

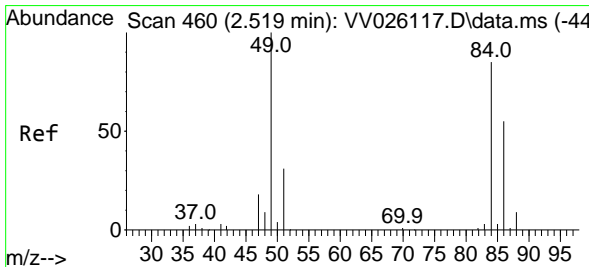
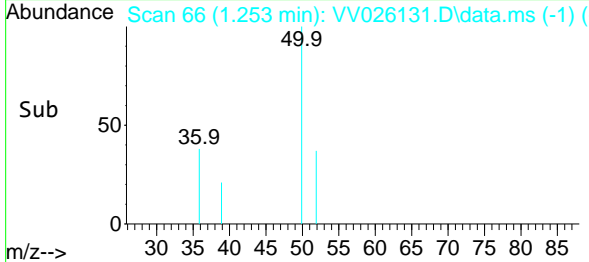
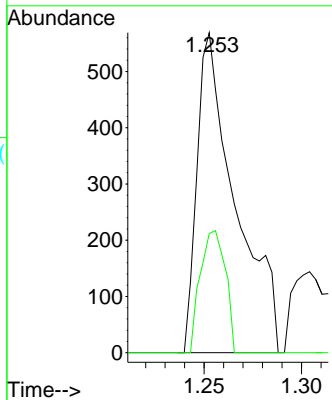
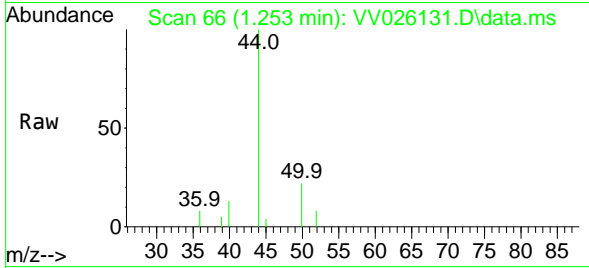




#3  
 Chloromethane  
 Concen: 0.043 ug/L  
 RT: 1.253 min Scan# 60  
 Delta R.T. -0.003 min  
 Lab File: VV026131.D  
 Acq: 11 Jun 2022 15:44

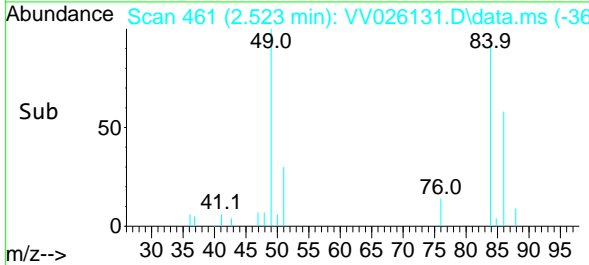
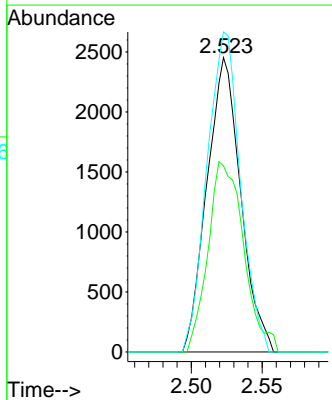
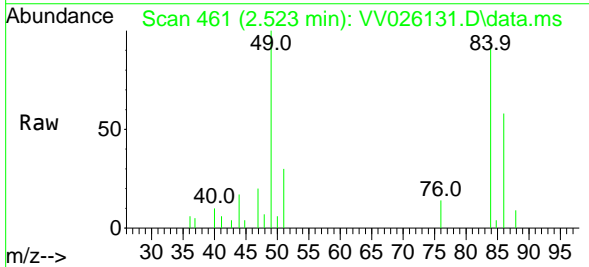
Instrument :  
 MSVOA\_V  
 ClientSampleId :

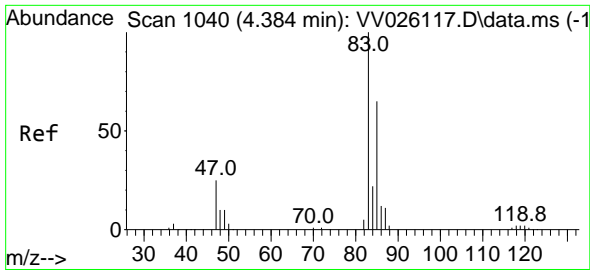
Tgt Ion: 50 Resp: 778  
 Ion Ratio Lower Upper  
 50 100  
 52 37.3 23.0 42.6



#16  
 Methylene chloride  
 Concen: 0.310 ug/L  
 RT: 2.523 min Scan# 461  
 Delta R.T. 0.003 min  
 Lab File: VV026131.D  
 Acq: 11 Jun 2022 15:44

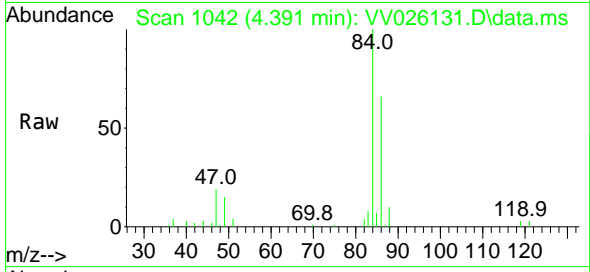
Tgt Ion: 84 Resp: 4067  
 Ion Ratio Lower Upper  
 84 100  
 86 63.2 45.6 84.6  
 49 108.7 82.9 153.9



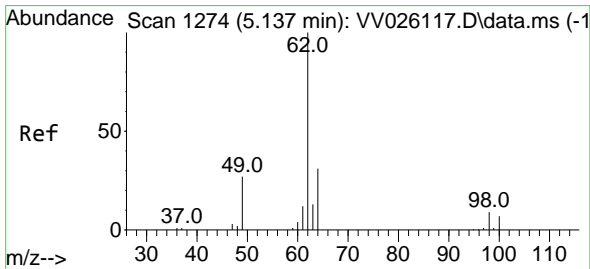
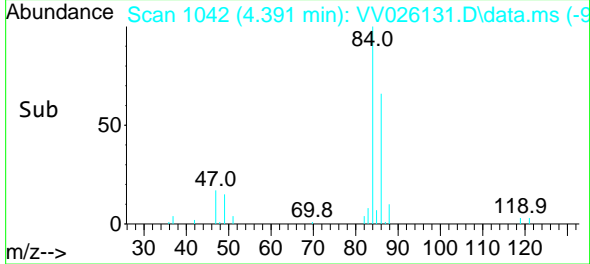
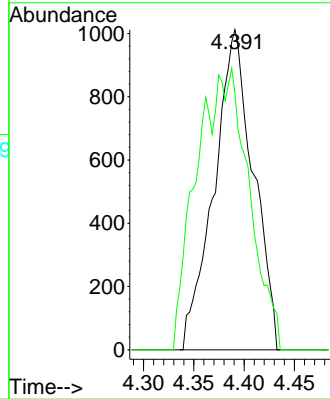


#25  
 Chloroform  
 Concen: 0.118 ug/L  
 RT: 4.391 min Scan# 1042  
 Delta R.T. 0.006 min  
 Lab File: VV026131.D  
 Acq: 11 Jun 2022 15:44

Instrument : MSVOA\_V  
 ClientSampleId :

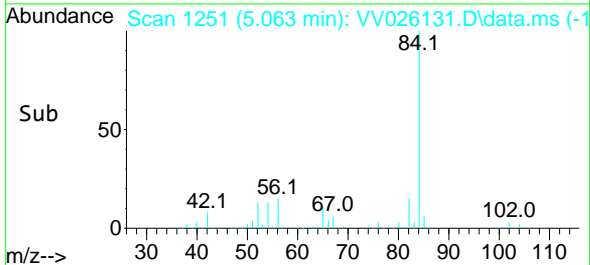
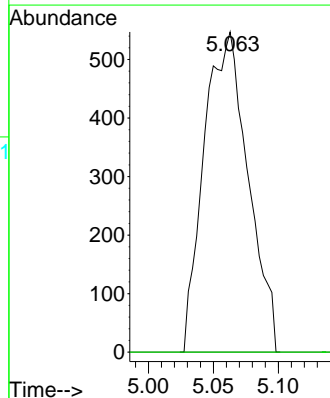
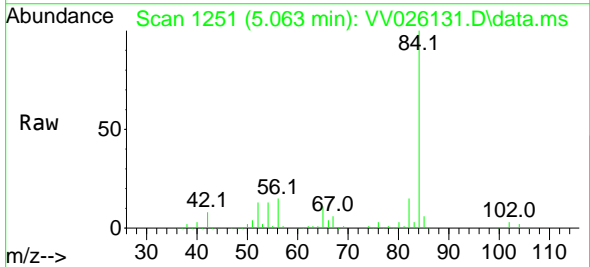


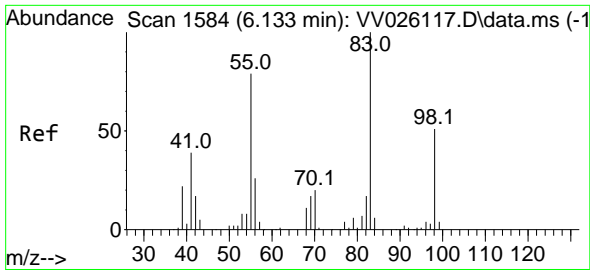
Tgt Ion: 83 Resp: 2746  
 Ion Ratio Lower Upper  
 83 100  
 85 80.2 45.2 84.0



#27  
 1,2-Dichloroethane  
 Concen: 0.113 ug/L  
 RT: 5.063 min Scan# 1251  
 Delta R.T. -0.074 min  
 Lab File: VV026131.D  
 Acq: 11 Jun 2022 15:44

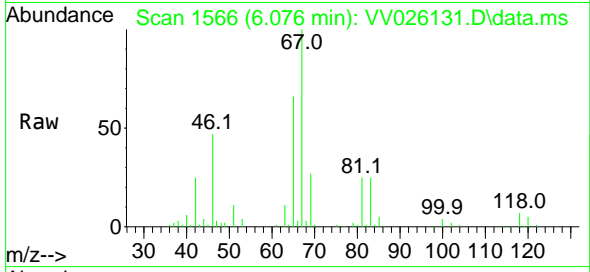
Tgt Ion: 62 Resp: 1291  
 Ion Ratio Lower Upper  
 62 100  
 98 0.0 8.5 12.7#



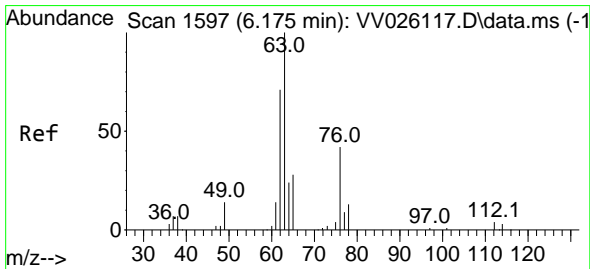
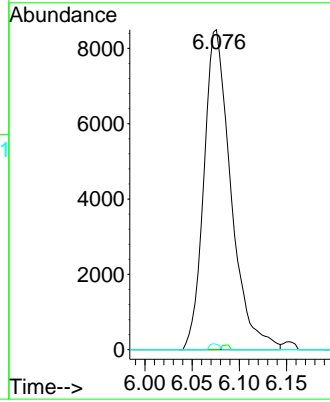
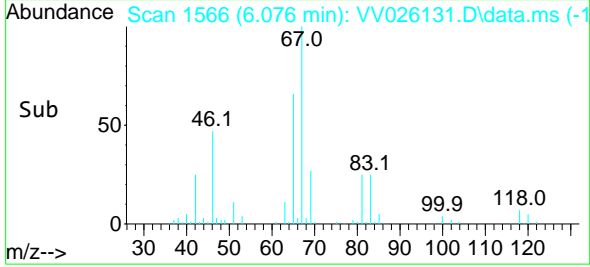


#35  
 Methylcyclohexane  
 Concen: 0.858 ug/L  
 RT: 6.076 min Scan# 1566  
 Delta R.T. -0.058 min  
 Lab File: VV026131.D  
 Acq: 11 Jun 2022 15:44

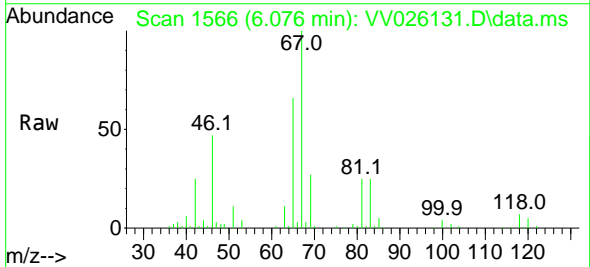
Instrument : MSVOA\_V  
 ClientSampleId :



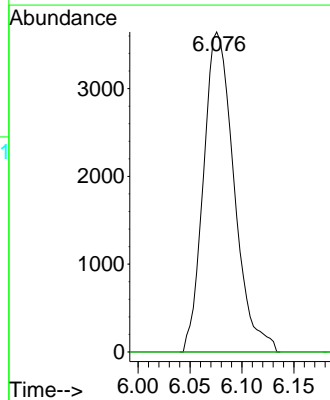
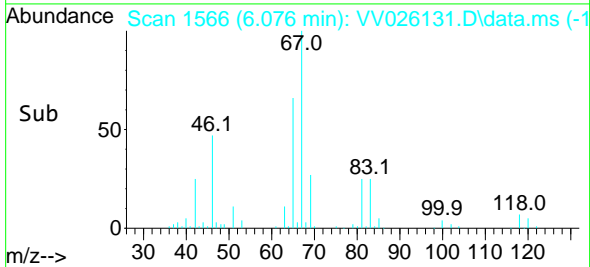
Tgt Ion: 83 Resp: 16913  
 Ion Ratio Lower Upper  
 83 100  
 55 0.4 59.4 89.0#  
 98 0.6 38.9 58.3#

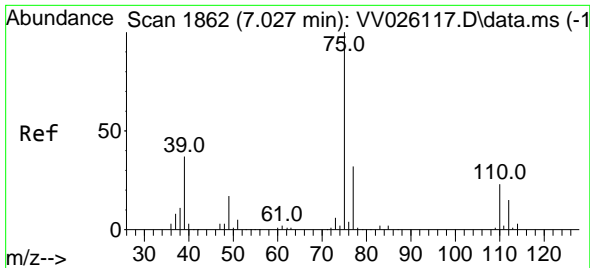


#37  
 1,2-Dichloropropane  
 Concen: 0.628 ug/L  
 RT: 6.076 min Scan# 1566  
 Delta R.T. -0.100 min  
 Lab File: VV026131.D  
 Acq: 11 Jun 2022 15:44



Tgt Ion: 63 Resp: 7457  
 Ion Ratio Lower Upper  
 63 100  
 112 0.0 3.8 5.6#

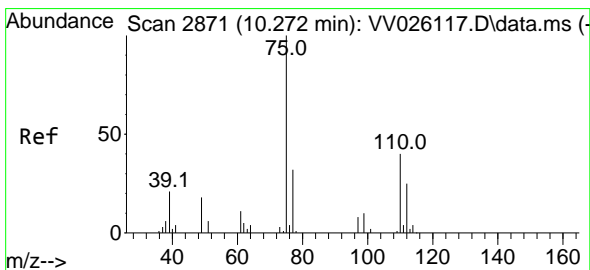
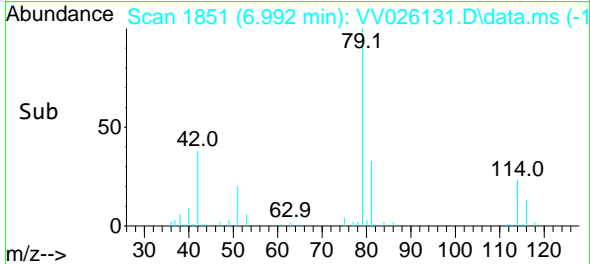
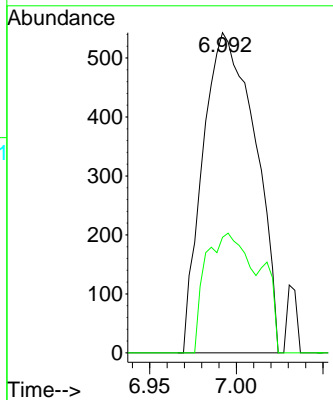
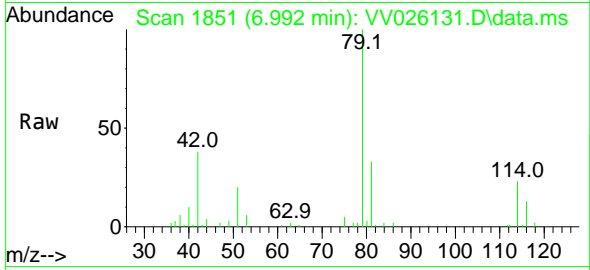




#39  
 cis-1,3-Dichloropropene  
 Concen: 0.078 ug/L  
 RT: 6.992 min Scan# 1111  
 Delta R.T. -0.035 min  
 Lab File: VV026131.D  
 Acq: 11 Jun 2022 15:44

Instrument : MSVOA\_V  
 ClientSampleId :

Tgt Ion: 75 Resp: 1140  
 Ion Ratio Lower Upper  
 75 100  
 77 36.1 23.2 43.0



#61  
 1,2,3-Trichloropropane  
 Concen: 1.588 ug/L  
 RT: 11.246 min Scan# 3174  
 Delta R.T. 0.974 min  
 Lab File: VV026131.D  
 Acq: 11 Jun 2022 15:44

Tgt Ion: 75 Resp: 7745  
 Ion Ratio Lower Upper  
 75 100  
 77 30.4 26.6 40.0  
 110 0.9 32.0 48.0#

