

Data Path : Z:\voasrv\HPCHEM1\MSVOA_V\Data\VW061122\
 Data File : VW026149.D
 Acq On : 11 Jun 2022 23:50
 Operator : SY/MD
 Sample : N3312-16
 Misc : 25mL/MSVOA_V/WATER
 ALS Vial : 37 Sample Multiplier: 1

Instrument :
 MSVOA_V
 ClientSampleId :

Quant Time: Jun 13 07:43:31 2022
 Quant Method : Z:\voasrv\HPCHEM1\MSVOA_V\Method\SFAMVTR060822WMA.M
 Quant Title : TRACE VOA SFAM1.0
 QLast Update : Mon Jun 13 07:40:59 2022
 Response via : Initial Calibration

Compound	R.T.	QIon	Response	Conc	Units	Dev(Min)

Internal Standards						
1) 1,4-Difluorobenzene	5.622	114	183612	5.000	ug/L	0.00
28) Chlorobenzene-d5	8.854	117	180727	5.000	ug/L	0.00
58) 1,4-Dichlorobenzene-d4	11.249	152	73642	5.000	ug/L	0.00
System Monitoring Compounds						
4) Vinyl Chloride-d3	1.320	65	45415	4.214	ug/L	0.00
Spiked Amount	5.000	Range 40 - 130	Recovery	=	84.200%	
7) Chloroethane-d5	1.581	69	55078	4.888	ug/L	0.00
Spiked Amount	5.000	Range 65 - 130	Recovery	=	97.800%	
11) 1,1-Dichloroethene-d2	2.121	63	75733	3.042	ug/L	0.00
Spiked Amount	5.000	Range 60 - 125	Recovery	=	60.800%	
20) 2-Butanone-d5	3.912	46	76088	47.730	ug/L	0.00
Spiked Amount	50.000	Range 40 - 130	Recovery	=	95.460%	
24) Chloroform-d	4.362	84	112147	4.909	ug/L	0.00
Spiked Amount	5.000	Range 70 - 125	Recovery	=	98.200%	
26) 1,2-Dichloroethane-d4	5.040	65	48547	5.210	ug/L	0.00
Spiked Amount	5.000	Range 70 - 130	Recovery	=	104.200%	
32) Benzene-d6	5.060	84	207095	4.742	ug/L	0.00
Spiked Amount	5.000	Range 70 - 125	Recovery	=	94.800%	
36) 1,2-Dichloropropane-d6	6.076	67	68260	5.052	ug/L	0.00
Spiked Amount	5.000	Range 60 - 140	Recovery	=	101.000%	
41) Toluene-d8	7.317	98	156020	4.043	ug/L	0.00
Spiked Amount	5.000	Range 70 - 130	Recovery	=	80.800%	
43) trans-1,3-Dichloroprop...	7.629	79	14530	3.653	ug/L	0.00
Spiked Amount	5.000	Range 55 - 130	Recovery	=	73.000%	
46) 2-Hexanone-d5	8.092	63	73787	42.153	ug/L	0.00
Spiked Amount	50.000	Range 45 - 130	Recovery	=	84.300%	
56) 1,1,2,2-Tetrachloroeth...	10.214	84	44409	4.875	ug/L	0.00
Spiked Amount	5.000	Range 65 - 120	Recovery	=	97.400%	
66) 1,2-Dichlorobenzene-d4	11.622	152	54346	4.824	ug/L	0.00
Spiked Amount	5.000	Range 80 - 120	Recovery	=	96.400%	

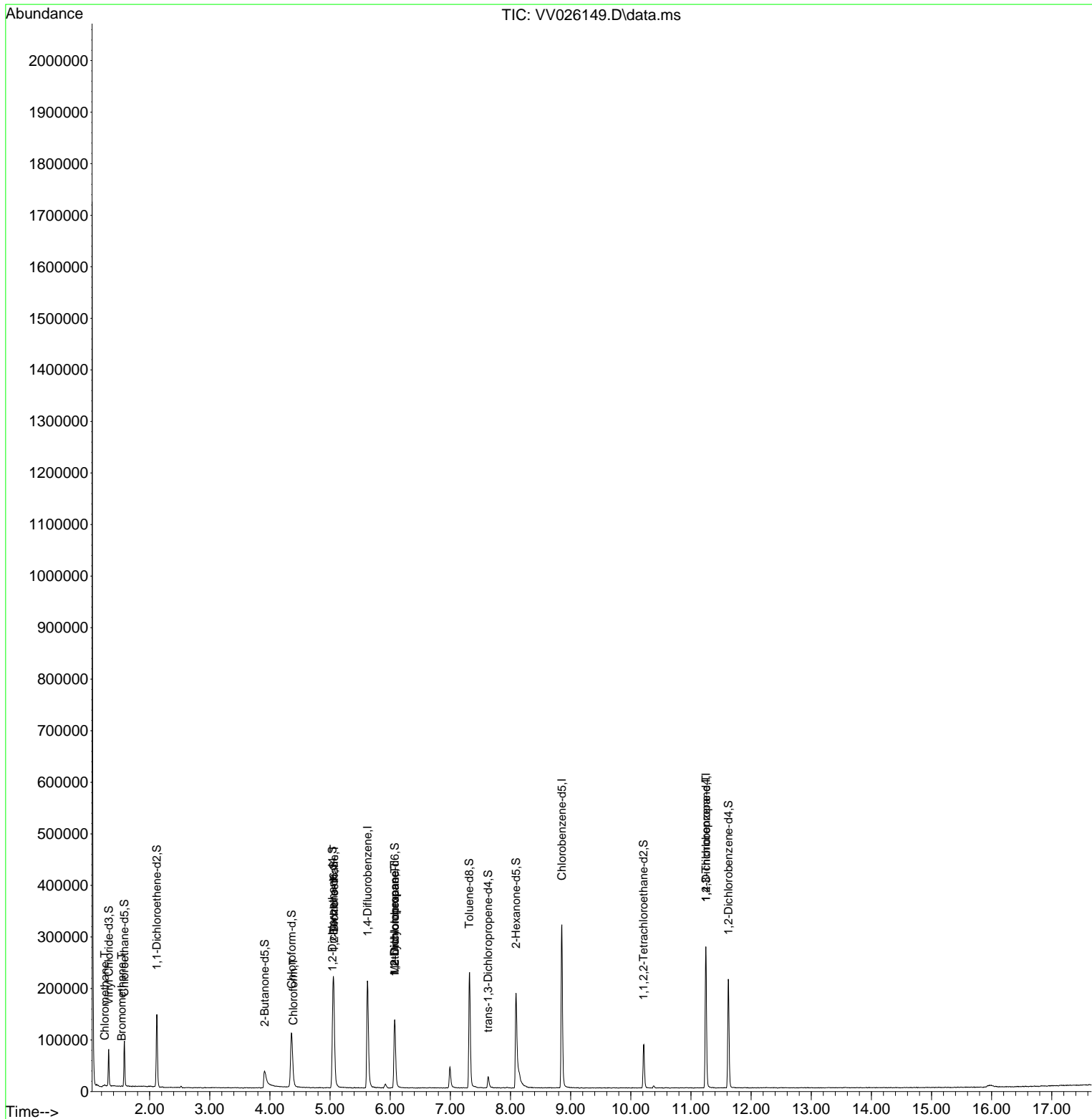
Target Compounds						Qvalue
3) Chloromethane	1.253	50	1529	0.076	ug/L	96
6) Bromomethane	1.536	94	565	0.046	ug/L	85
25) Chloroform	4.388	83	2679	0.103	ug/L #	73
27) 1,2-Dichloroethane	5.066	62	1138	0.089	ug/L #	72
35) Methylcyclohexane	6.076	83	16343	0.715	ug/L #	19
37) 1,2-Dichloropropane	6.072	63	7142	0.519	ug/L #	86
61) 1,2,3-Trichloropropane	11.249	75	8708	1.515	ug/L #	66

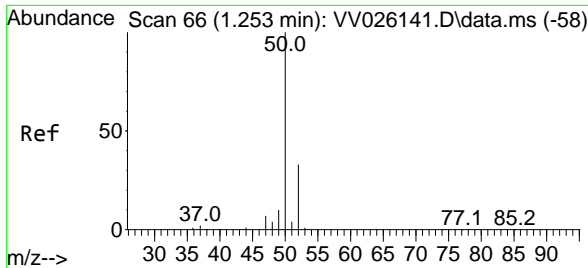
(#) = qualifier out of range (m) = manual integration (+) = signals summed

Data Path : Z:\voasrv\HPCHEM1\MSVOA_V\Data\VV061122\
 Data File : VV026149.D
 Acq On : 11 Jun 2022 23:50
 Operator : SY/MD
 Sample : N3312-16
 Misc : 25mL/MSVOA_V/WATER
 ALS Vial : 37 Sample Multiplier: 1

Instrument :
 MSVOA_V
 ClientSampleId :

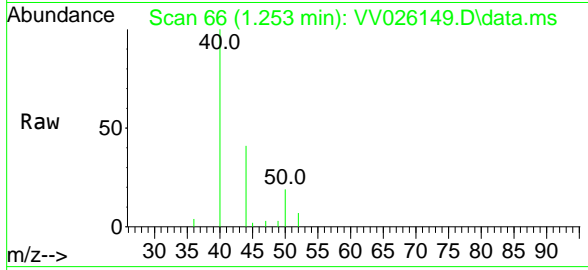
Quant Time: Jun 13 07:43:31 2022
 Quant Method : Z:\voasrv\HPCHEM1\MSVOA_V\Method\SFAMVTR060822WMA.M
 Quant Title : TRACE VOA SFAM1.0
 QLast Update : Mon Jun 13 07:40:59 2022
 Response via : Initial Calibration



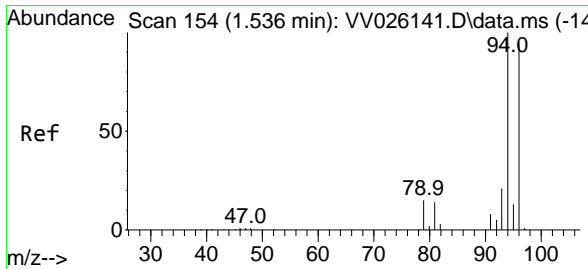
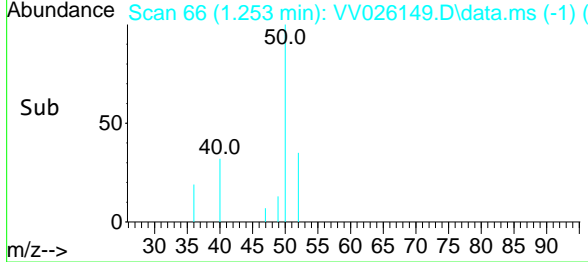
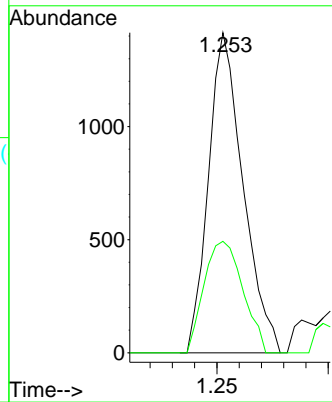


#3
 Chloromethane
 Concen: 0.076 ug/L
 RT: 1.253 min Scan# 60
 Delta R.T. -0.000 min
 Lab File: VV026149.D
 Acq: 11 Jun 2022 23:50

Instrument : MSVOA_V
 ClientSampleId :

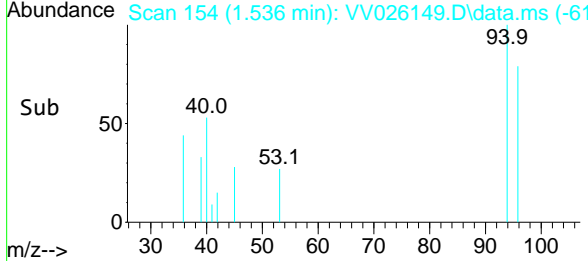
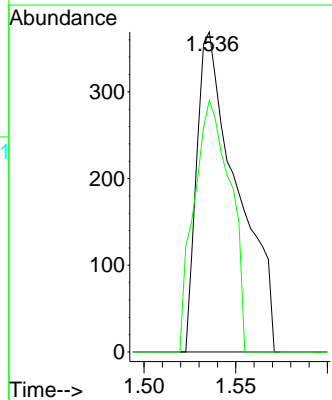
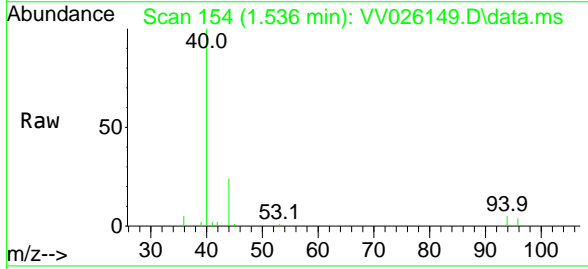


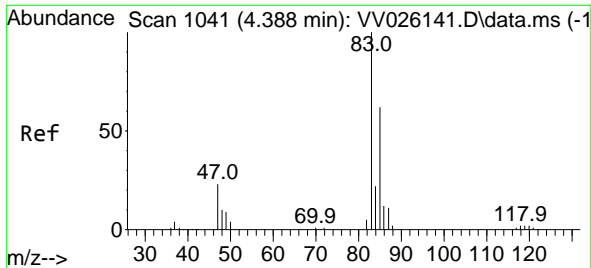
Tgt Ion: 50 Resp: 1529
 Ion Ratio Lower Upper
 50 100
 52 34.8 23.0 42.6



#6
 Bromomethane
 Concen: 0.046 ug/L
 RT: 1.536 min Scan# 154
 Delta R.T. -0.000 min
 Lab File: VV026149.D
 Acq: 11 Jun 2022 23:50

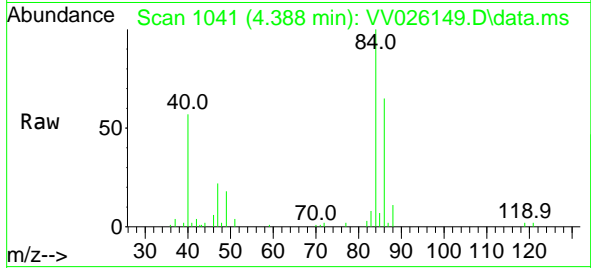
Tgt Ion: 94 Resp: 565
 Ion Ratio Lower Upper
 94 100
 96 78.6 65.5 121.6



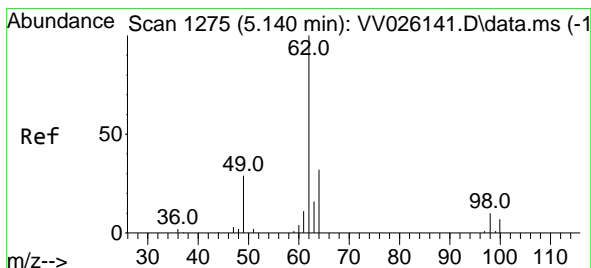
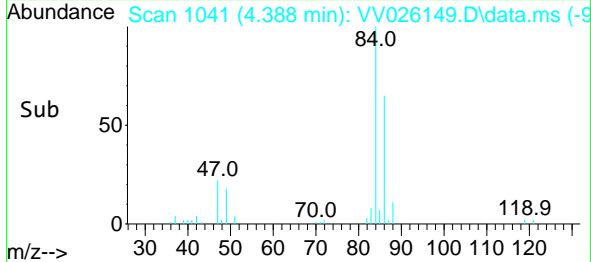
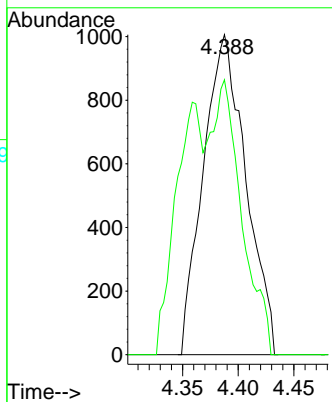


#25
 Chloroform
 Concen: 0.103 ug/L
 RT: 4.388 min Scan# 1041
 Delta R.T. 0.000 min
 Lab File: VV026149.D
 Acq: 11 Jun 2022 23:50

Instrument : MSVOA_V
 ClientSampleId :

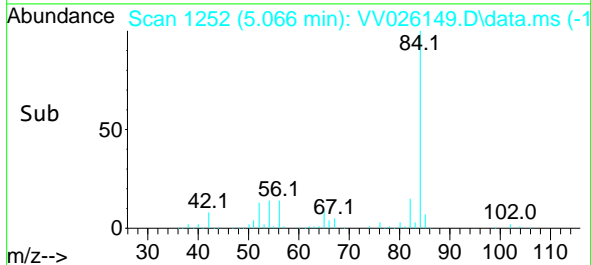
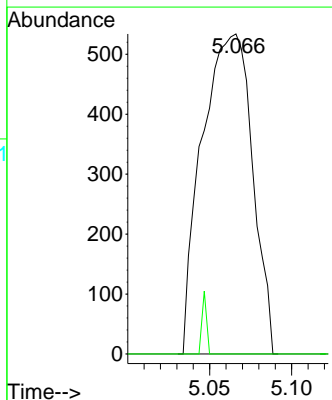
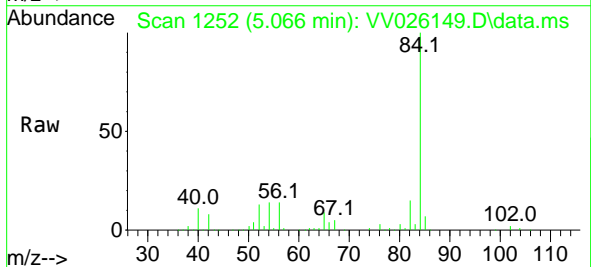


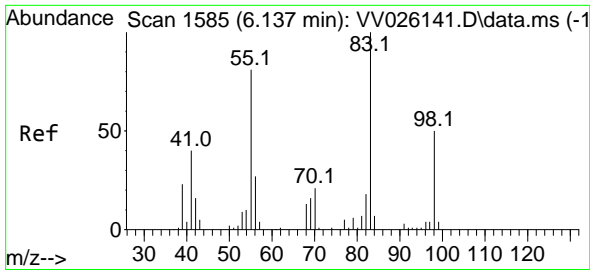
Tgt Ion: 83 Resp: 2679
 Ion Ratio Lower Upper
 83 100
 85 85.9 45.2 84.0#



#27
 1,2-Dichloroethane
 Concen: 0.089 ug/L
 RT: 5.066 min Scan# 1252
 Delta R.T. -0.074 min
 Lab File: VV026149.D
 Acq: 11 Jun 2022 23:50

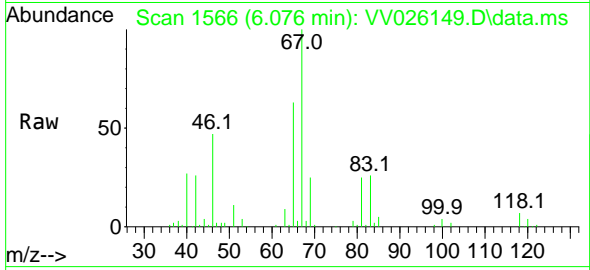
Tgt Ion: 62 Resp: 1138
 Ion Ratio Lower Upper
 62 100
 98 0.0 8.5 12.7#



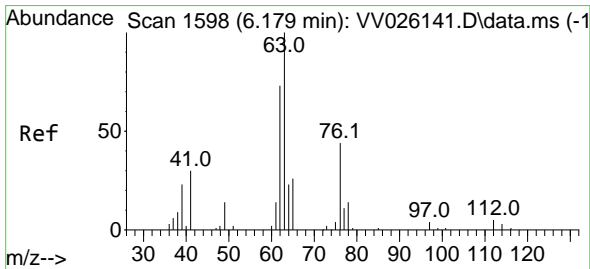
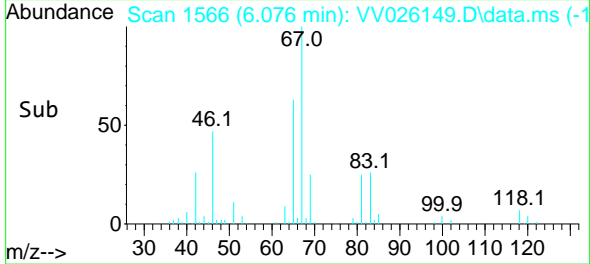
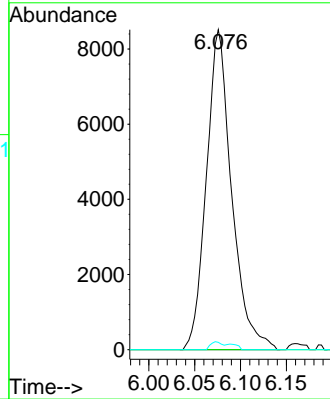


#35
 Methylcyclohexane
 Concen: 0.715 ug/L
 RT: 6.076 min Scan# 1566
 Delta R.T. -0.061 min
 Lab File: VV026149.D
 Acq: 11 Jun 2022 23:50

Instrument : MSVOA_V
 ClientSampleId :

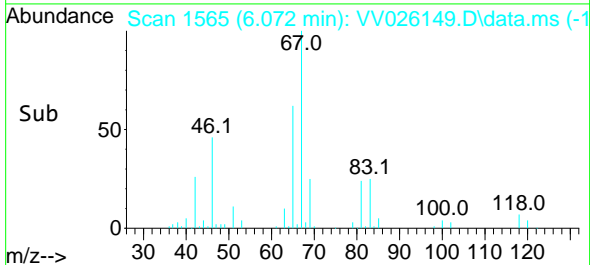
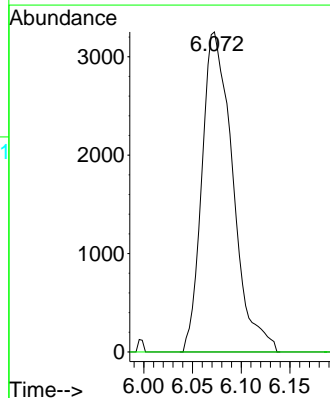
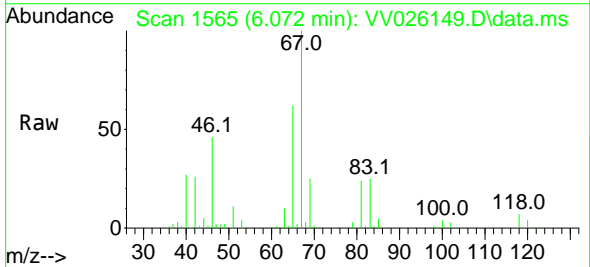


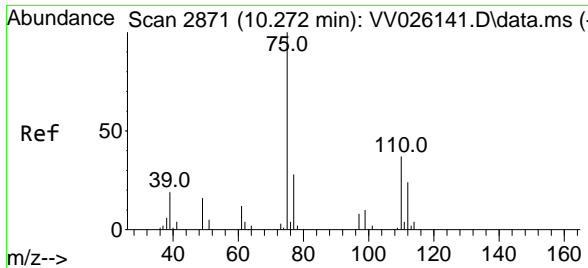
Tgt Ion: 83 Resp: 16343
 Ion Ratio Lower Upper
 83 100
 55 0.0 59.4 89.0#
 98 1.1 38.9 58.3#



#37
 1,2-Dichloropropane
 Concen: 0.519 ug/L
 RT: 6.072 min Scan# 1565
 Delta R.T. -0.106 min
 Lab File: VV026149.D
 Acq: 11 Jun 2022 23:50

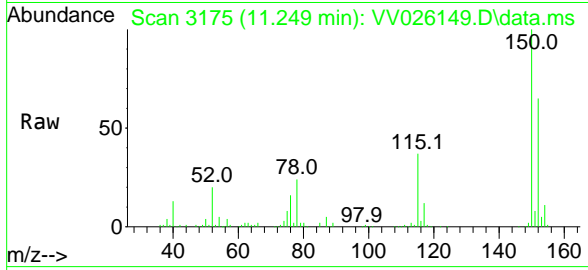
Tgt Ion: 63 Resp: 7142
 Ion Ratio Lower Upper
 63 100
 112 0.0 3.8 5.6#





#61
 1,2,3-Trichloropropane
 Concen: 1.515 ug/L
 RT: 11.249 min Scan# 31
 Delta R.T. 0.977 min
 Lab File: VV026149.D
 Acq: 11 Jun 2022 23:50

Instrument :
 MSVOA_V
 ClientSampleId :



Tgt Ion	Resp	Lower	Upper
75	8708		
75	100		
77	33.5	26.6	40.0
110	2.1	32.0	48.0

