

Data Path : Z:\voasrv\HPCHEM1\MSVOA_V\Data\VW061122\
 Data File : VW026164.D
 Acq On : 12 Jun 2022 05:47
 Operator : SY/MD
 Sample : N3273-15 200X
 Misc : 25mL/MSVOA_V/WATER
 ALS Vial : 52 Sample Multiplier: 1

Instrument :
 MSVOA_V
 ClientSampleId :

Quant Time: Jun 13 07:47:37 2022
 Quant Method : Z:\voasrv\HPCHEM1\MSVOA_V\Method\SFAMVTR060822WMA.M
 Quant Title : TRACE VOA SFAM1.0
 QLast Update : Mon Jun 13 07:40:59 2022
 Response via : Initial Calibration

Compound	R.T.	QIon	Response	Conc	Units	Dev(Min)

Internal Standards						
1) 1,4-Difluorobenzene	5.626	114	174290	5.000	ug/L	0.00
28) Chlorobenzene-d5	8.854	117	169104	5.000	ug/L	0.00
58) 1,4-Dichlorobenzene-d4	11.249	152	66313	5.000	ug/L	0.00
System Monitoring Compounds						
4) Vinyl Chloride-d3	1.320	65	43019	4.205	ug/L	0.00
Spiked Amount	5.000	Range 40 - 130	Recovery	=	84.000%	
7) Chloroethane-d5	1.581	69	54041	5.052	ug/L	0.00
Spiked Amount	5.000	Range 65 - 130	Recovery	=	101.000%	
11) 1,1-Dichloroethene-d2	2.121	63	73124	3.094	ug/L	0.00
Spiked Amount	5.000	Range 60 - 125	Recovery	=	61.800%	
20) 2-Butanone-d5	3.915	46	57329	37.886	ug/L	0.00
Spiked Amount	50.000	Range 40 - 130	Recovery	=	75.780%	
24) Chloroform-d	4.362	84	109225	5.037	ug/L	0.00
Spiked Amount	5.000	Range 70 - 125	Recovery	=	100.800%	
26) 1,2-Dichloroethane-d4	5.044	65	48408	5.473	ug/L	0.00
Spiked Amount	5.000	Range 70 - 130	Recovery	=	109.400%	
32) Benzene-d6	5.060	84	205620	5.032	ug/L	0.00
Spiked Amount	5.000	Range 70 - 125	Recovery	=	100.600%	
36) 1,2-Dichloropropane-d6	6.076	67	67284	5.322	ug/L	0.00
Spiked Amount	5.000	Range 60 - 140	Recovery	=	106.400%	
41) Toluene-d8	7.320	98	155076	4.294	ug/L	0.00
Spiked Amount	5.000	Range 70 - 130	Recovery	=	85.800%	
43) trans-1,3-Dichloroprop...	7.629	79	12588	3.382	ug/L	0.00
Spiked Amount	5.000	Range 55 - 130	Recovery	=	67.600%	
46) 2-Hexanone-d5	8.092	63	63637	38.853	ug/L	0.00
Spiked Amount	50.000	Range 45 - 130	Recovery	=	77.700%	
56) 1,1,2,2-Tetrachloroeth...	10.217	84	38478	4.514	ug/L	0.00
Spiked Amount	5.000	Range 65 - 120	Recovery	=	90.200%	
66) 1,2-Dichlorobenzene-d4	11.622	152	52546	5.179	ug/L	0.00
Spiked Amount	5.000	Range 80 - 120	Recovery	=	103.600%	

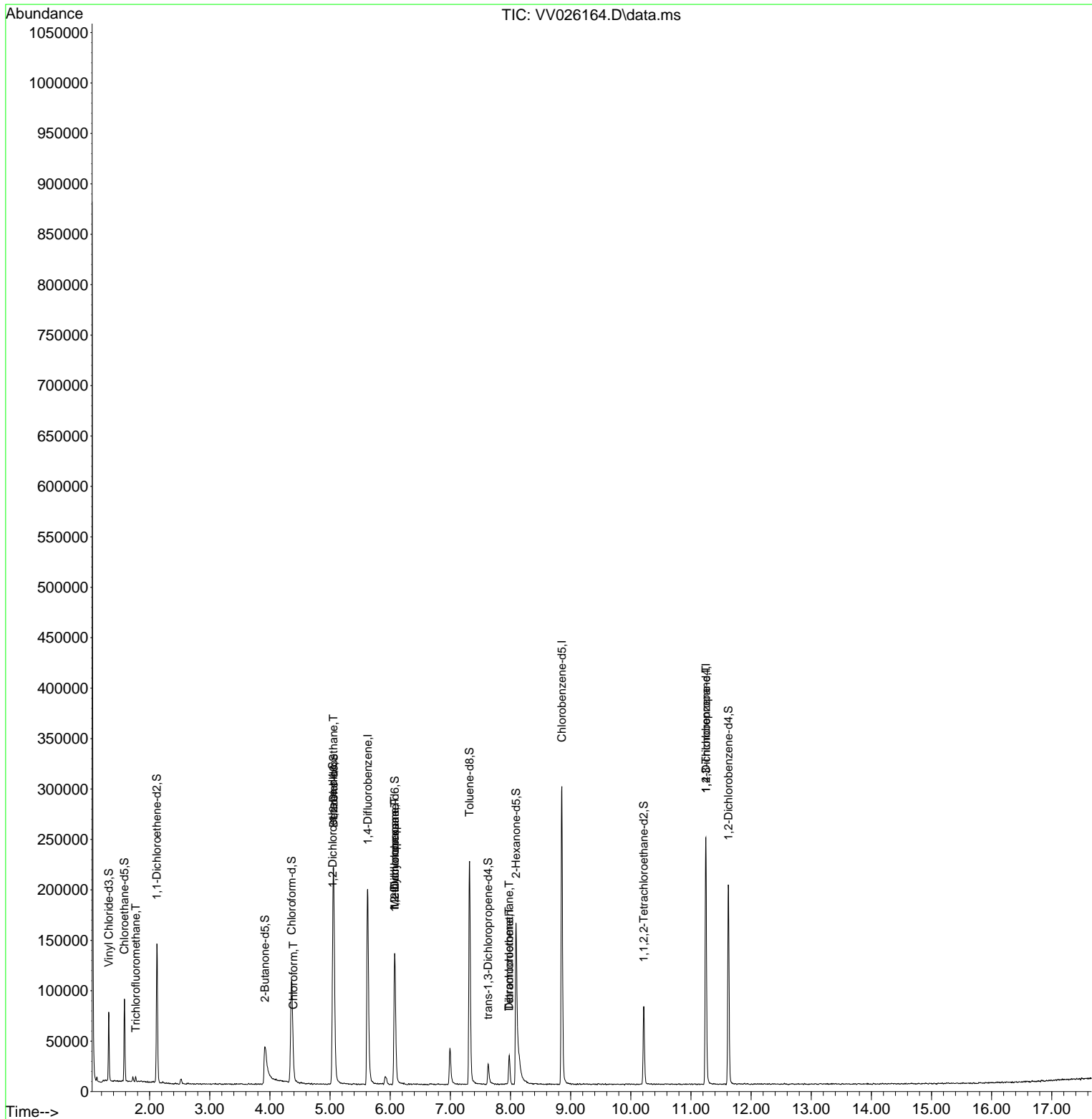
Target Compounds						Qvalue
9) Trichlorofluoromethane	1.770	101	2227	0.087	ug/L	89
25) Chloroform	4.391	83	3664	0.148	ug/L	100
27) 1,2-Dichloroethane	5.056	62	1159	0.095	ug/L #	72
35) Methylcyclohexane	6.076	83	15606	0.729	ug/L #	19
37) 1,2-Dichloropropane	6.072	63	7036	0.546	ug/L #	86
47) Tetrachloroethene	7.979	164	6652	0.619	ug/L	95
49) Dibromochloromethane	7.979	129	6373	0.698	ug/L #	9
61) 1,2,3-Trichloropropane	11.249	75	7802	1.507	ug/L #	66

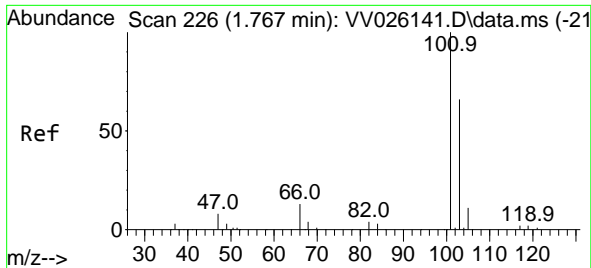
(#) = qualifier out of range (m) = manual integration (+) = signals summed

Data Path : Z:\voasrv\HPCHEM1\MSVOA_V\Data\VV061122\
 Data File : VV026164.D
 Acq On : 12 Jun 2022 05:47
 Operator : SY/MD
 Sample : N3273-15 200X
 Misc : 25mL/MSVOA_V/WATER
 ALS Vial : 52 Sample Multiplier: 1

Instrument :
 MSVOA_V
 ClientSampleId :

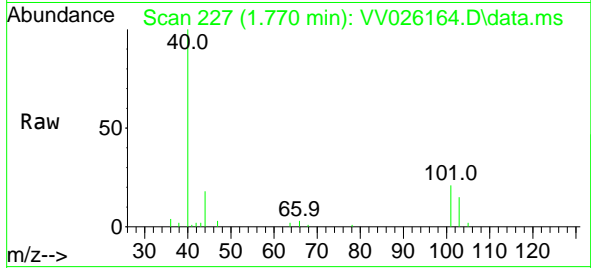
Quant Time: Jun 13 07:47:37 2022
 Quant Method : Z:\voasrv\HPCHEM1\MSVOA_V\Method\SFAMVTR060822WMA.M
 Quant Title : TRACE VOA SFAM1.0
 QLast Update : Mon Jun 13 07:40:59 2022
 Response via : Initial Calibration



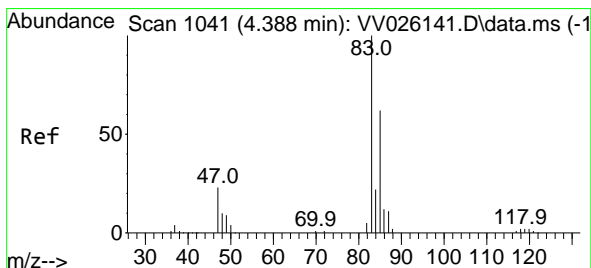
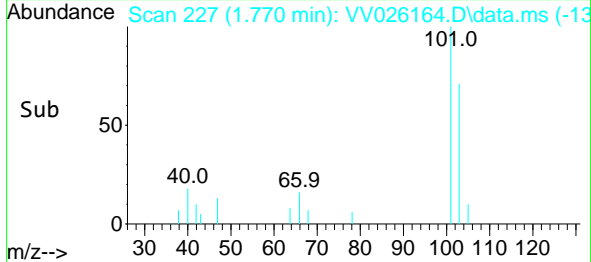
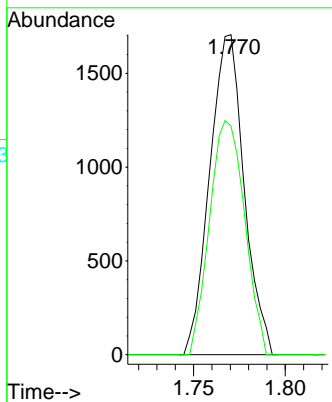


#9
 Trichlorofluoromethane
 Concen: 0.087 ug/L
 RT: 1.770 min Scan# 21
 Delta R.T. 0.003 min
 Lab File: VV026164.D
 Acq: 12 Jun 2022 05:47

Instrument :
 MSVOA_V
 ClientSampleId :

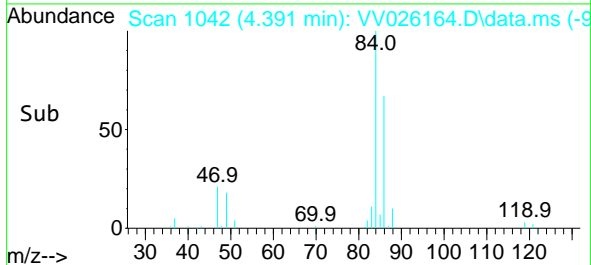
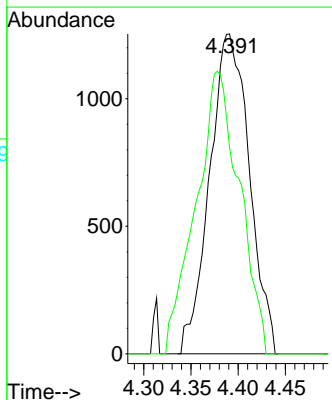
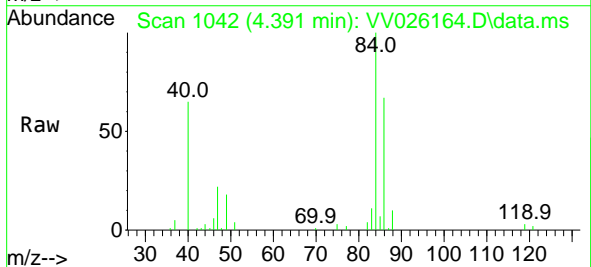


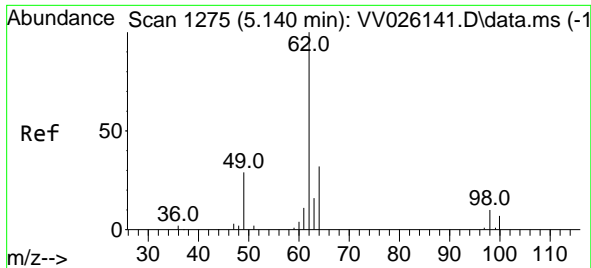
Tgt Ion: 101 Resp: 2227
 Ion Ratio Lower Upper
 101 100
 103 74.4 52.6 78.8



#25
 Chloroform
 Concen: 0.148 ug/L
 RT: 4.391 min Scan# 1042
 Delta R.T. 0.003 min
 Lab File: VV026164.D
 Acq: 12 Jun 2022 05:47

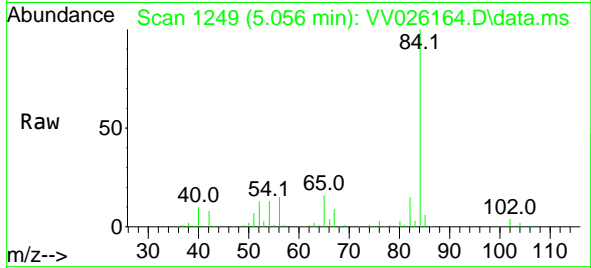
Tgt Ion: 83 Resp: 3664
 Ion Ratio Lower Upper
 83 100
 85 64.6 45.2 84.0



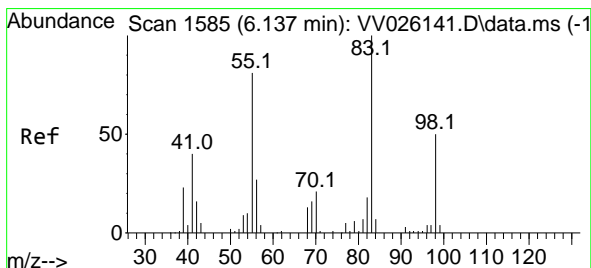
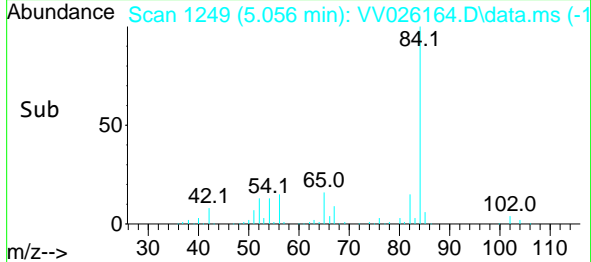
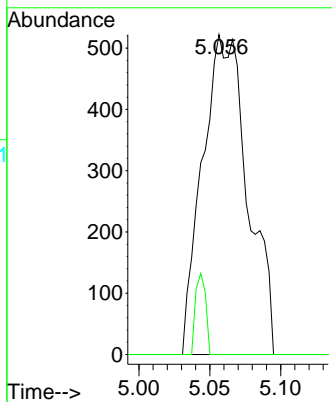


#27
 1,2-Dichloroethane
 Concen: 0.095 ug/L
 RT: 5.056 min Scan# 1159
 Delta R.T. -0.084 min
 Lab File: VV026164.D
 Acq: 12 Jun 2022 05:47

Instrument : MSVOA_V
 ClientSampleId :

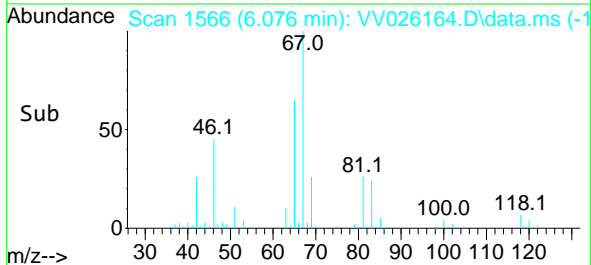
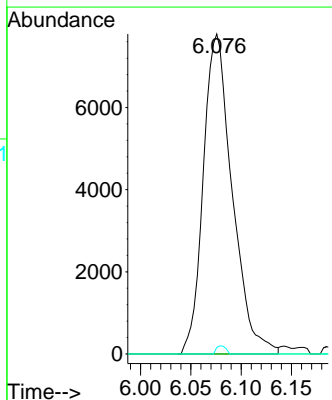
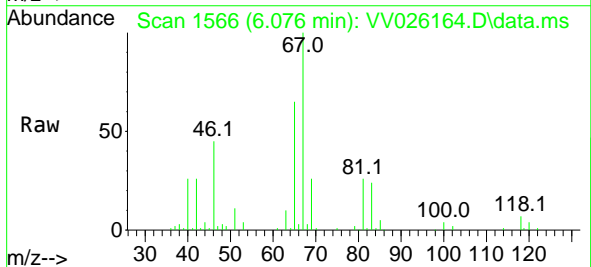


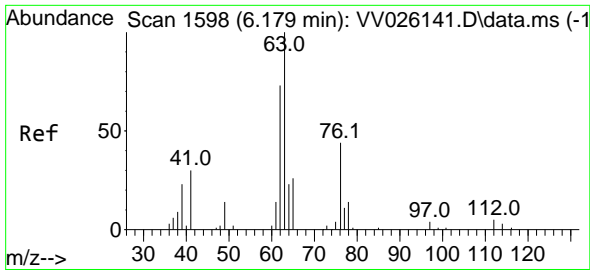
Tgt Ion: 62 Resp: 1159
 Ion Ratio Lower Upper
 62 100
 98 0.0 8.5 12.7#



#35
 Methylcyclohexane
 Concen: 0.729 ug/L
 RT: 6.076 min Scan# 1566
 Delta R.T. -0.061 min
 Lab File: VV026164.D
 Acq: 12 Jun 2022 05:47

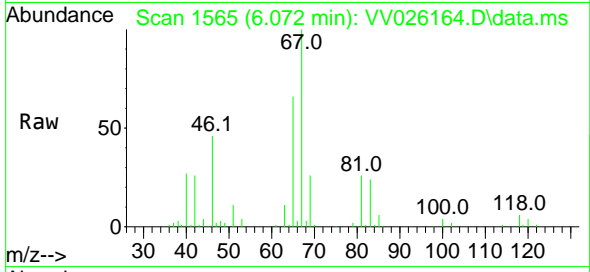
Tgt Ion: 83 Resp: 15606
 Ion Ratio Lower Upper
 83 100
 55 0.0 59.4 89.0#
 98 0.8 38.9 58.3#



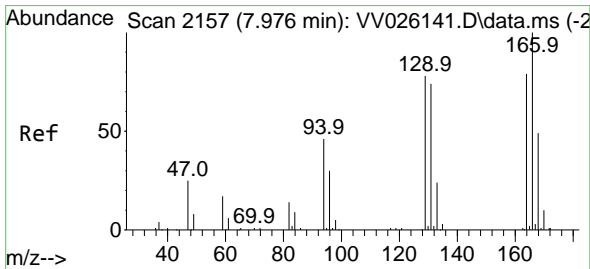
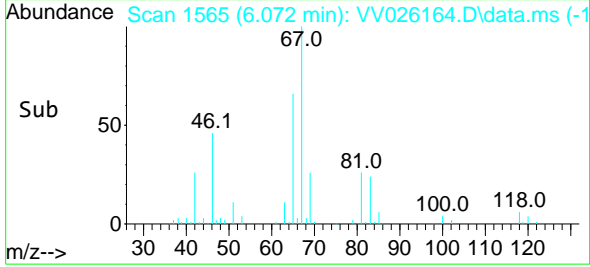
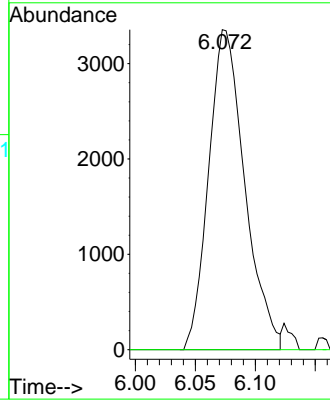


#37
 1,2-Dichloropropane
 Concen: 0.546 ug/L
 RT: 6.072 min Scan# 1111
 Delta R.T. -0.106 min
 Lab File: VV026164.D
 Acq: 12 Jun 2022 05:47

Instrument : MSVOA_V
 ClientSampleId :

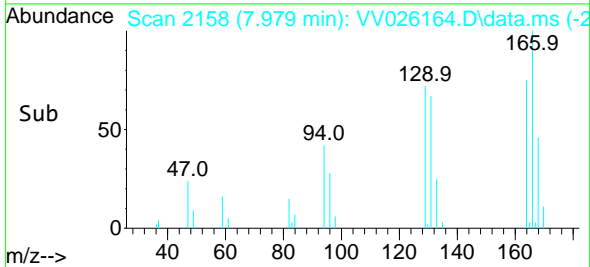
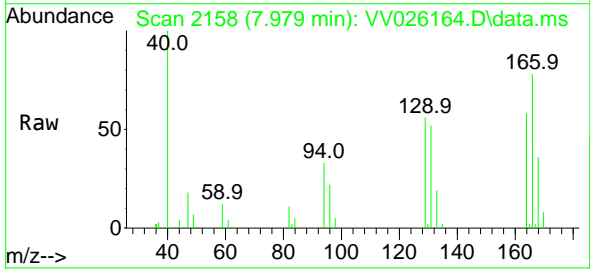
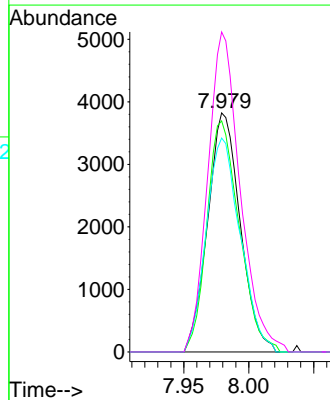


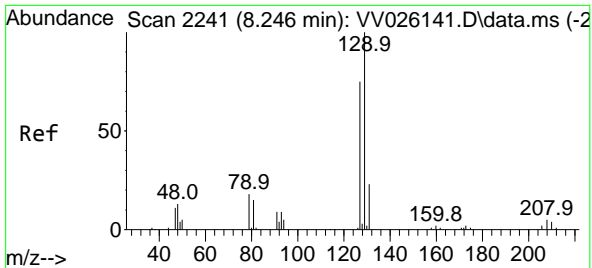
Tgt Ion: 63 Resp: 7036
 Ion Ratio Lower Upper
 63 100
 112 0.0 3.8 5.6#



#47
 Tetrachloroethene
 Concen: 0.619 ug/L
 RT: 7.979 min Scan# 2158
 Delta R.T. 0.003 min
 Lab File: VV026164.D
 Acq: 12 Jun 2022 05:47

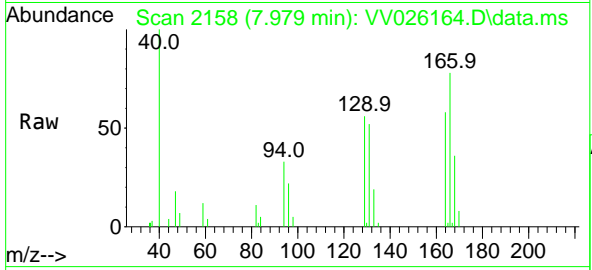
Tgt Ion: 164 Resp: 6652
 Ion Ratio Lower Upper
 164 100
 129 96.6 68.3 126.9
 131 89.5 66.5 123.5
 166 133.8 88.1 163.7



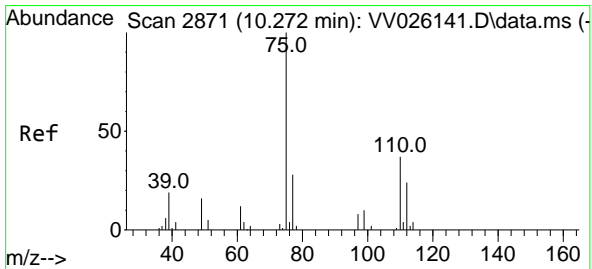
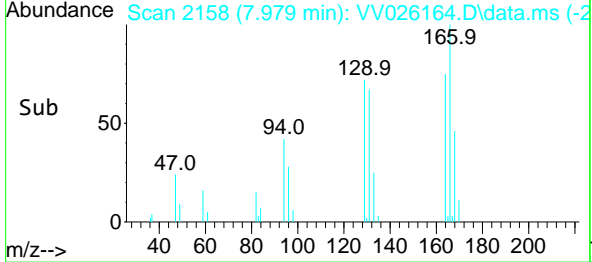
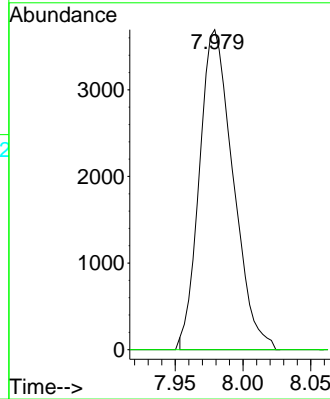


#49
 Dibromochloromethane
 Concen: 0.698 ug/L
 RT: 7.979 min Scan# 2158
 Delta R.T. -0.267 min
 Lab File: VV026164.D
 Acq: 12 Jun 2022 05:47

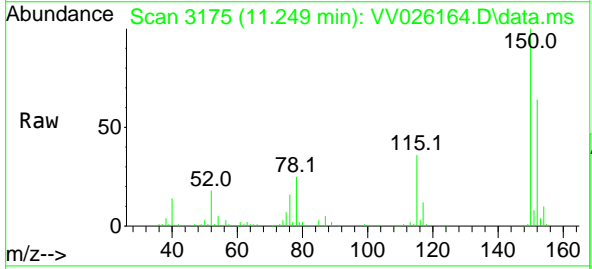
Instrument : MSVOA_V
 ClientSampleId :



Tgt Ion: 129 Resp: 6373
 Ion Ratio Lower Upper
 129 100
 127 0.0 55.9 103.7#



#61
 1,2,3-Trichloropropane
 Concen: 1.507 ug/L
 RT: 11.249 min Scan# 3175
 Delta R.T. 0.977 min
 Lab File: VV026164.D
 Acq: 12 Jun 2022 05:47



Tgt Ion: 75 Resp: 7802
 Ion Ratio Lower Upper
 75 100
 77 31.9 26.6 40.0
 110 2.4 32.0 48.0#

