

Quantitation Report (QT Reviewed)

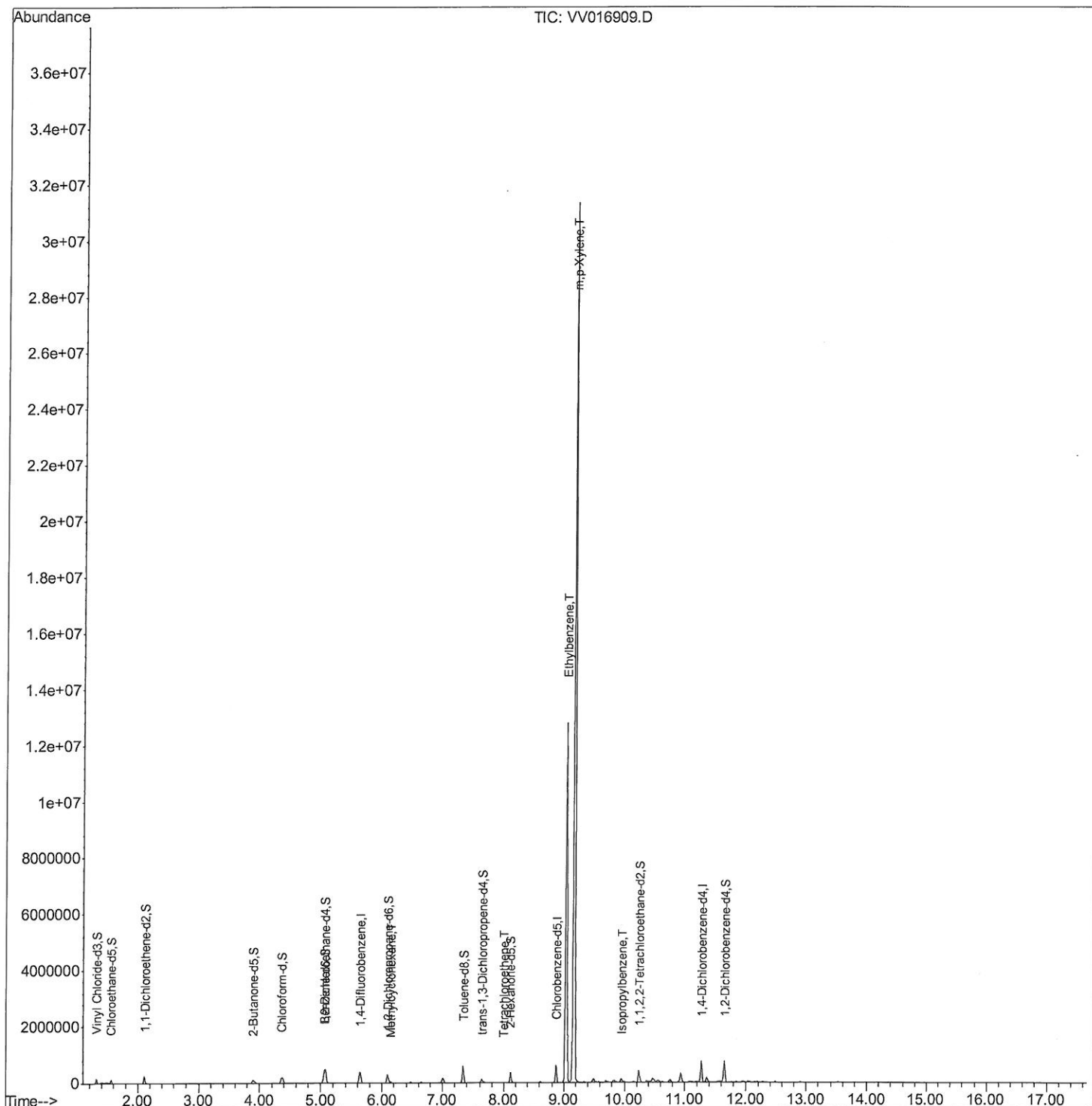
Data Path : Z:\VOASRV\HPCHEM1\MSVOA V\DATA\VV061220\
 Data File : VV016909.D
 Acq On : 13 Jun 2020 04:05
 Operator : SY/MD
 Sample : L2990-11
 Misc : 5.0mL/MSVOA V/WATER
 ALS Vial : 41 Sample Multiplier: 1

Instrument :
 MSVOA_V
 Client Sampled :
 E3YG7

Quant Time: Jun 13 07:01:37 2020
 Quant Method : Z:\VOASRV\HPCHEM1\MSVOA_V\METHOD\SOMVLM060820WMA.M
 Quant Title : VOC Analysis
 QLast Update : Sat Jun 13 06:09:05 2020
 Response via : Initial Calibration

Manual Integrations
 APPROVED

MMDadoda
 6/15/2020 12:23:03 PM



Quantitation Report (Qedit)

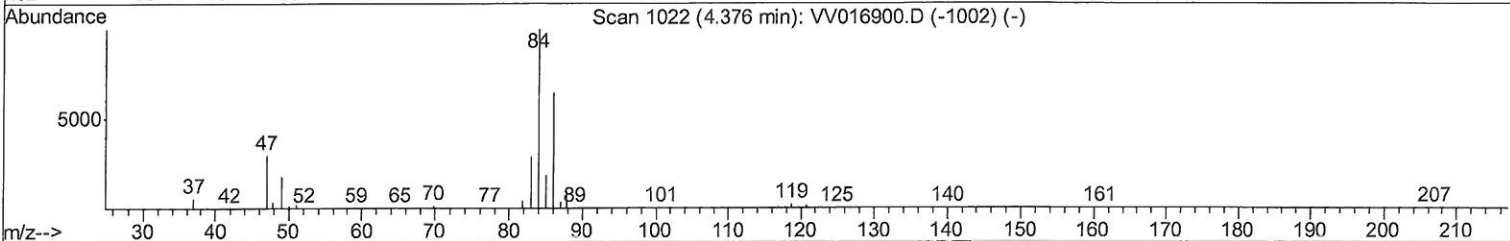
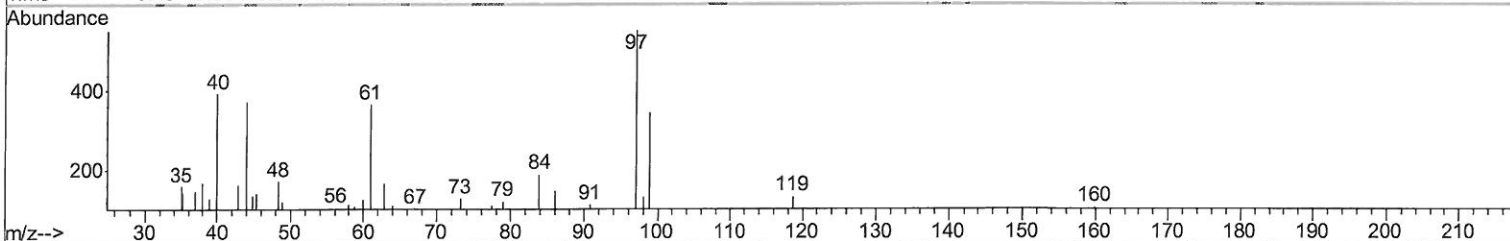
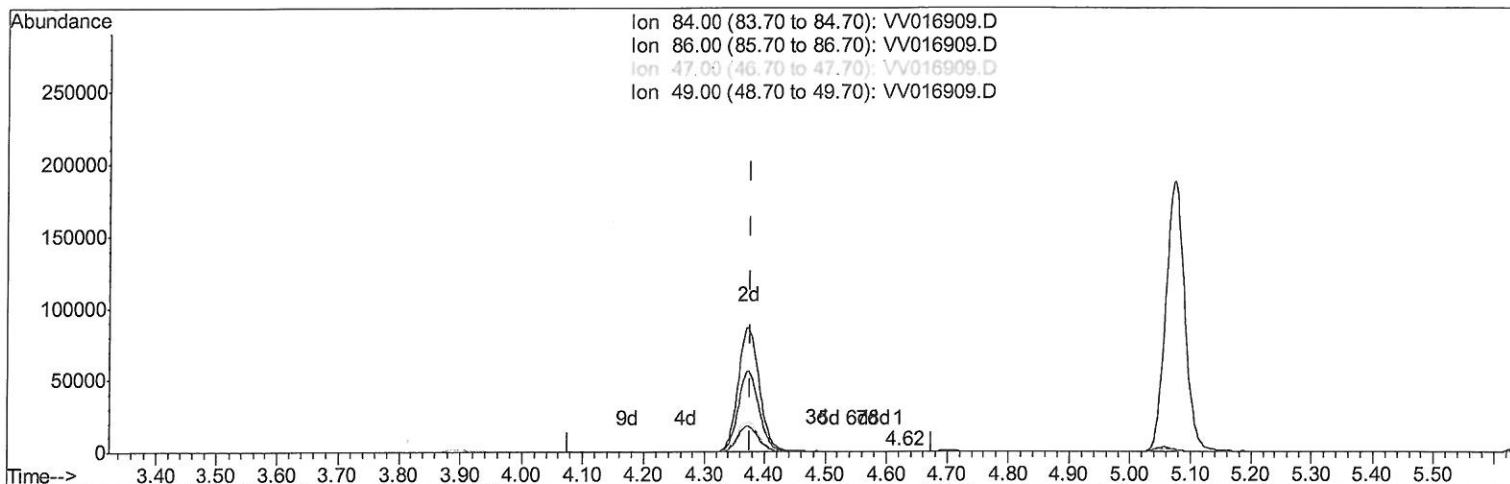
Data Path : Z:\VOASRV\HPCHEM1\MSVOA V\DATA\VV061220\
 Data File : VV016909.D
 Acq On : 13 Jun 2020 04:05
 Operator : SY/MD
 Sample : L2990-11
 Misc : 5.0mL/MSVOA V/WATER
 ALS Vial : 41 Sample Multiplier: 1

Instrument :
 MSVOA_V
 Client Sampled :
 E3YG7

Manual Integrations
 APPROVED

MMDadoda
 6/15/2020 12:23:03 PM

Quant Time: Jun 13 06:16:35 2020
 Quant Method : Z:\VOASRV\HPCHEM1\MSVOA_V\METHOD\SOMVLM060820WMA.M
 Quant Title : VOC Analysis
 QLast Update : Sat Jun 13 06:09:05 2020
 Response via : Initial Calibration



TIC: VV016909.D

(24) Chloroform-d (S)
 4.621min (+0.244) 0.04ug/L
 response 214

Ion	Exp%	Act%
84.00	100	100
86.00	62.80	58.88
47.00	44.50	31.78
49.00	27.40	22.43

Quantitation Report (Qedit)

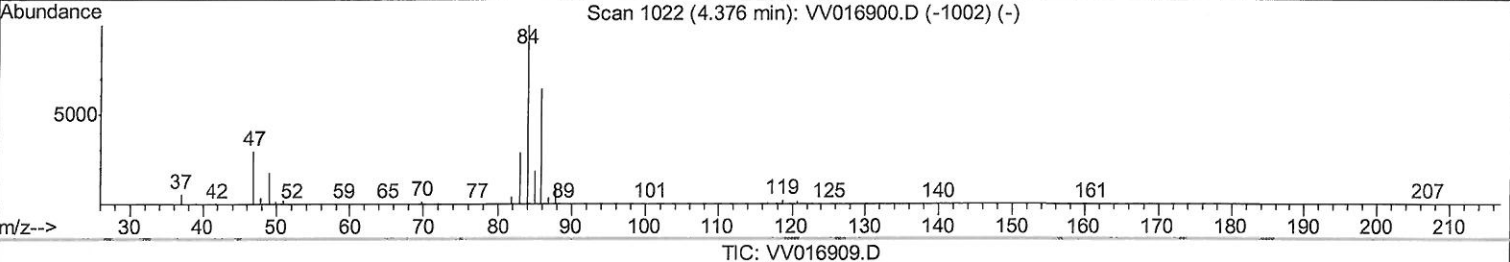
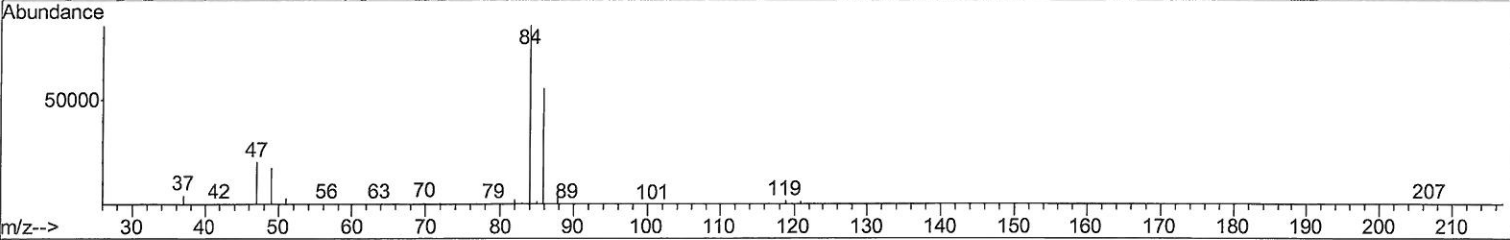
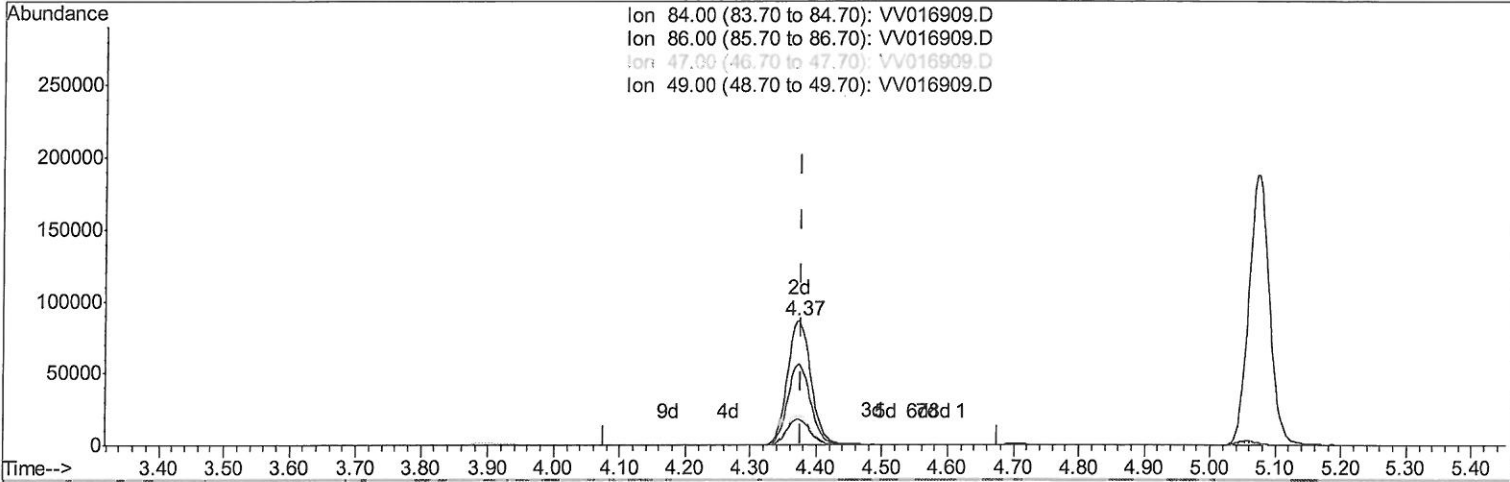
Data Path : Z:\VOASRV\HPCHEM1\MSVOA V\DATA\VV061220\
 Data File : VV016909.D
 Acq On : 13 Jun 2020 04:05
 Operator : SY/MD
 Sample : L2990-11
 Misc : 5.0mL/MSVOA V/WATER
 ALS Vial : 41 Sample Multiplier: 1

Instrument :
 MSVOA_V
 Client Sampled :
 E3YG7

Manual Integrations
 APPROVED

MMDadoda
 6/15/2020 12:23:03 PM

Quant Time: Jun 13 06:16:35 2020
 Quant Method : Z:\VOASRV\HPCHEM1\MSVOA_V\METHOD\SOMVLM060820WMA.M
 Quant Title : VOC Analysis
 QLast Update : Sat Jun 13 06:09:05 2020
 Response via : Initial Calibration



(24) Chloroform-d (S)

4.373min (-0.003) 43.72ug/L m

7 MD
06/15/20

response 211956

Ion	Exp%	Act%
84.00	100	100
86.00	62.80	0.06#
47.00	44.50	0.03#
49.00	27.40	0.02#

Quantitation Report (Qedit)

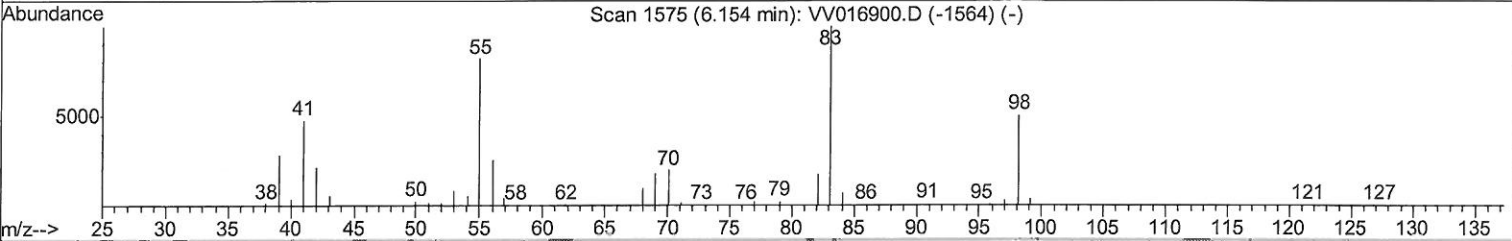
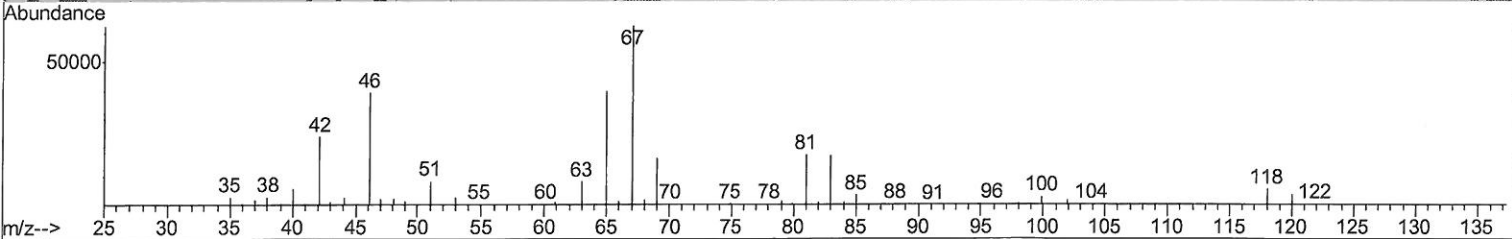
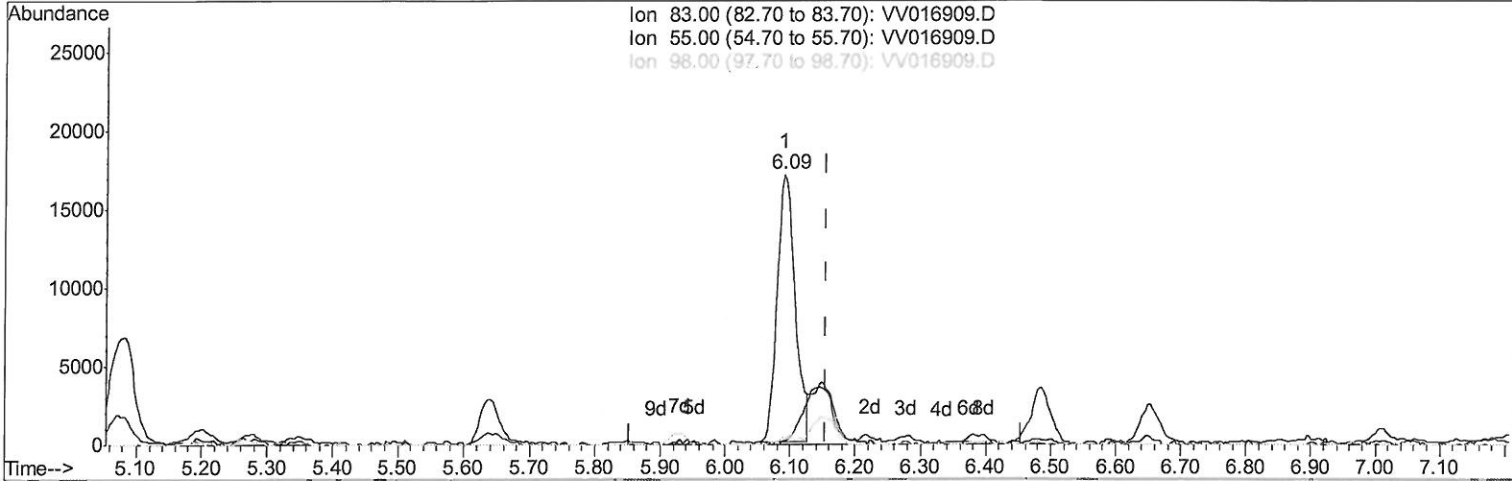
Data Path : Z:\VOASRV\HPCHEM1\MSVOA V\DATA\VV061220\
 Data File : VV016909.D
 Acq On : 13 Jun 2020 04:05
 Operator : SY/MD
 Sample : L2990-11
 Misc : 5.0mL/MSVOA V/WATER
 ALS Vial : 41 Sample Multiplier: 1

Instrument :
 MSVOA_V
 Client Sampled :
 E3YG7

Manual Integrations
 APPROVED

MMDadoda
 6/15/2020 12:23:03 PM

Quant Time: Jun 13 06:16:35 2020
 Quant Method : Z:\VOASRV\HPCHEM1\MSVOA_V\METHOD\SOMVLM060820WMA.M
 Quant Title : VOC Analysis
 QLast Update : Sat Jun 13 06:09:05 2020
 Response via : Initial Calibration



TIC: VV016909.D

(35) Methylcyclohexane (T)

6.090min (-0.064) 8.14ug/L

response 32773

Ion	Exp%	Act%
83.00	100	100
55.00	80.20	0.00#
98.00	50.40	1.22#
0.00	0.00	0.00

Quantitation Report (Qedit)

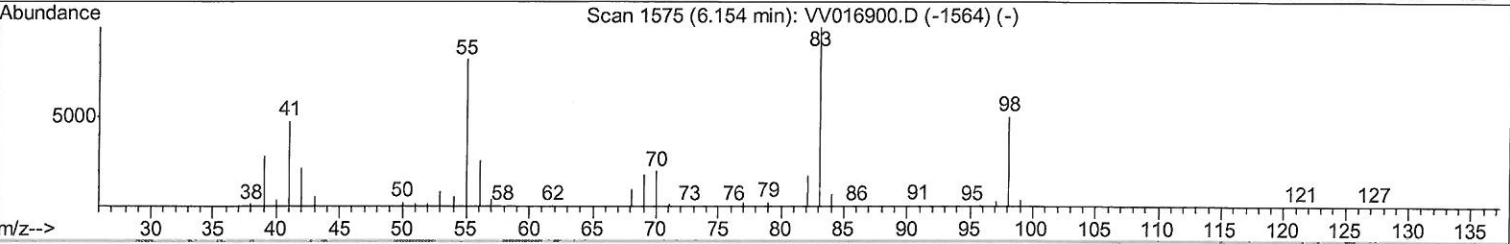
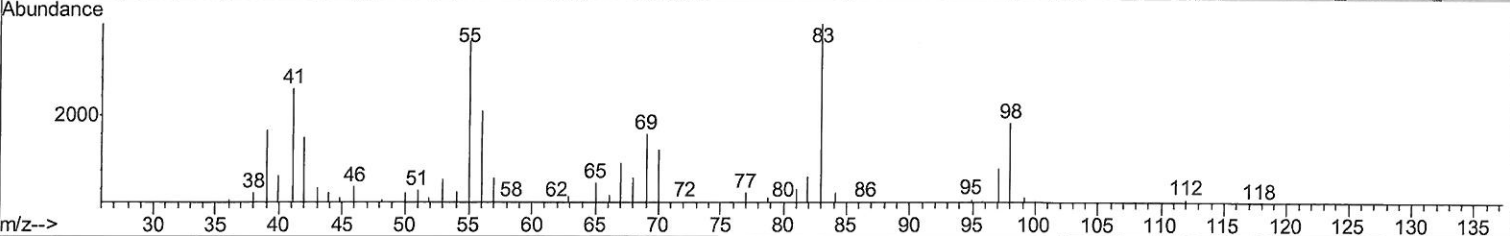
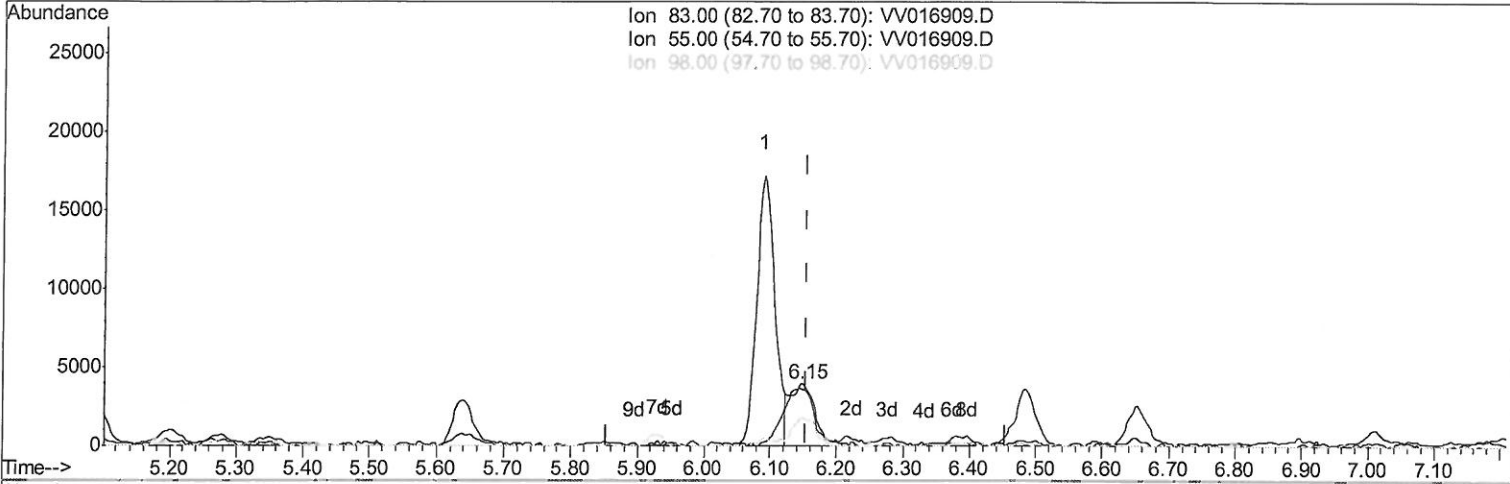
Data Path : Z:\VOASRV\HPCHEM1\MSVOA V\DATA\VV061220\
 Data File : VV016909.D
 Acq On : 13 Jun 2020 04:05
 Operator : SY/MD
 Sample : L2990-11
 Misc : 5.0mL/MSVOA V/WATER
 ALS Vial : 41 Sample Multiplier: 1

Instrument :
 MSVOA_V
 Client Sampled :
 E3YG7

Manual Integrations
 APPROVED

MMDadoda
 6/15/2020 12:23:03 PM

Quant Time: Jun 13 06:16:35 2020
 Quant Method : Z:\VOASRV\HPCHEM1\MSVOA_V\METHOD\SOMVLM060820WMA.M
 Quant Title : VOC Analysis
 QLast Update : Sat Jun 13 06:09:05 2020
 Response via : Initial Calibration



TIC: VV016909.D

(35) Methylcyclohexane (T)

6.148min (-0.006) 2.59ug/L m

response 10415

MD
06/15/20

Ion	Exp%	Act%
83.00	100	100
55.00	80.20	0.00#
98.00	50.40	3.85#
0.00	0.00	0.00

Quantitation Report (QT Reviewed)

Data Path : Z:\VOASRV\HPCHEM1\MSVOA V\DATA\VV061220\
 Data File : VV016909.D
 Acq On : 13 Jun 2020 04:05
 Operator : SY/MD
 Sample : L2990-11
 Misc : 5.0mL/MSVOA V/WATER
 ALS Vial : 41 Sample Multiplier: 1

Instrument :
 MSVOA_V
 Client Sampled :
 E3YG7

Manual Integrations
 APPROVED

MMDadoda
 6/15/2020 12:23:03 PM

Quant Time: Jun 13 07:01:37 2020
 Quant Method : Z:\VOASRV\HPCHEM1\MSVOA_V\METHOD\SOMVLM060820WMA.M
 Quant Title : VOC Analysis
 QLast Update : Sat Jun 13 06:09:05 2020
 Response via : Initial Calibration

Internal Standards	R.T.	QIon	Response	Conc	Units	Dev (Min)
1) 1,4-Difluorobenzene	5.64	114	337897	50.00	ug/L	0.00
28) Chlorobenzene-d5	8.87	117	323574	50.00	ug/L	0.00
60) 1,4-Dichlorobenzene-d4	11.27	152	174645	50.00	ug/L	0.00

System Monitoring Compounds

4) Vinyl Chloride-d3	1.31	65	94869	39.79	ug/L	0.00
Spiked Amount	50.000	Range	60 - 135	Recovery	=	79.58%
7) Chloroethane-d5	1.56	69	71160	49.74	ug/L	0.00
Spiked Amount	50.000	Range	70 - 130	Recovery	=	99.48%
11) 1,1-Dichloroethene-d2	2.12	63	137668	34.39	ug/L	0.00
Spiked Amount	50.000	Range	60 - 125	Recovery	=	68.78%
21) 2-Butanone-d5	3.89	46	163248	92.51	ug/L	0.00
Spiked Amount	100.000	Range	40 - 130	Recovery	=	92.51%
24) Chloroform-d	4.37	84	211956m	43.72	ug/L	0.00
Spiked Amount	50.000	Range	70 - 125	Recovery	=	87.44%
26) 1,2-Dichloroethane-d4	5.05	65	156819	47.55	ug/L	0.00
Spiked Amount	50.000	Range	70 - 125	Recovery	=	95.10%
32) Benzene-d6	5.07	84	407280	43.66	ug/L	0.00
Spiked Amount	50.000	Range	70 - 125	Recovery	=	87.32%
36) 1,2-Dichloropropane-d6	6.09	67	127641	43.90	ug/L	0.00
Spiked Amount	50.000	Range	70 - 120	Recovery	=	87.80%
41) Toluene-d8	7.34	98	379510	44.34	ug/L	0.00
Spiked Amount	50.000	Range	80 - 120	Recovery	=	88.68%
43) trans-1,3-Dichloropropene-	7.64	79	62119	41.02	ug/L	0.00
Spiked Amount	50.000	Range	60 - 125	Recovery	=	82.04%
47) 2-Hexanone-d5	8.11	63	112066	88.41	ug/L	0.00
Spiked Amount	100.000	Range	45 - 130	Recovery	=	88.41%
57) 1,1,2,2-Tetrachloroethane-	10.24	84	173878	45.17	ug/L	0.00
Spiked Amount	50.000	Range	65 - 120	Recovery	=	90.34%
64) 1,2-Dichlorobenzene-d4	11.65	152	168798	45.29	ug/L	0.00
Spiked Amount	50.000	Range	80 - 120	Recovery	=	90.58%

> mQ
 06/15/20

Target Compounds

35) Methylcyclohexane	6.15	83	10415m	2.586	ug/L	Ovalue
46) Tetrachloroethene	8.00	164	1796	0.889	ug/L	87
52) Ethylbenzene	9.04	91	8594975	768.874	ug/L	97
53) m,p-Xylene	9.17	106	8939441	2147.784	ug/L	73
56) Isopropylbenzene	9.95	105	71348	6.469	ug/L	99

> mQ
 06/15/20

(#) = qualifier out of range (m) = manual integration (+) = signals summed