

Data Path : Z:\VOASRV\HPCHEM1\MSVOA V\DATA\VV061220\
 Data File : VV016896.D
 Acq On : 12 Jun 2020 22:09
 Operator : SY/MD
 Sample : L2914-08 10X
 Misc : 5.0mL/MSVOA V/WATER
 ALS Vial : 26 Sample Multiplier: 1

Instrument :
 MSVOA_V
 ClientSampleId :
 F9E03

Integration Parameters: LSCINT.P

Integrator: RTE
 Smoothing : OFF
 Sampling : 1
 Start Thrs: 0.2
 Stop Thrs : 0

Filtering: 5
 Min Area: 0 % of largest Peak
 Max Peaks: 100
 Peak Location: TOP

If leading or trailing edge < 100 prefer < Baseline drop else tangent >
 Peak separation: 5

Method : Z:\VOASRV\HPCHEM1\MSVOA_V\METHOD\SOMVLM060820WMA.M
 Title : VOC Analysis

Signal : TIC

peak #	R.T. min	first scan	max scan	last scan	PK TY	peak height	corr. area	corr. % max.	% of total
1	1.219	36	40	46	rVB2	45287	41999	3.51%	0.333%
2	1.312	61	69	79	rVB	380947	416938	34.88%	3.306%
3	1.364	79	85	96	rVB	91419	89285	7.47%	0.708%
4	1.421	97	103	109	rBV	70855	63263	5.29%	0.502%
5	1.608	155	161	175	rVB	67747	90371	7.56%	0.717%
6	1.756	200	207	213	rBV	47912	59684	4.99%	0.473%
7	1.798	215	220	233	rVB2	65639	89472	7.49%	0.709%
8	1.897	243	251	259	rBV	74088	94032	7.87%	0.746%
9	1.981	269	277	283	rBV	40255	55032	4.60%	0.436%
10	2.110	308	317	333	rBV	250125	369232	30.89%	2.928%
11	2.367	394	397	399	rBV4	1340	1005	0.08%	0.008%
12	2.396	404	406	410	rBV4	739	482	0.04%	0.004%
13	2.441	412	420	423	rBV8	8373	12382	1.04%	0.098%
14	2.582	457	464	479	rVB2	65474	115655	9.68%	0.917%
15	2.830	539	541	547	rVB6	1150	966	0.08%	0.008%
16	2.862	547	551	552	rBV4	2076	1253	0.10%	0.010%
17	2.923	568	570	572	rBV3	1313	700	0.06%	0.006%
18	3.106	625	627	628	rBV3	1037	354	0.03%	0.003%
19	3.116	628	630	631	rVV	1183	465	0.04%	0.004%
20	3.164	641	645	648	rBV5	2475	2303	0.19%	0.018%
21	3.344	698	701	702	rBV3	1043	491	0.04%	0.004%
22	3.360	704	706	708	rBV3	1410	734	0.06%	0.006%
23	3.643	792	794	797	rBV4	884	591	0.05%	0.005%
24	3.688	805	808	810	rBV3	1396	833	0.07%	0.007%
25	3.778	823	836	854	rBV3	33490	85331	7.14%	0.677%
26	3.859	858	861	862	rBV2	1481	772	0.06%	0.006%
27	3.897	863	873	899	rBV2	101313	276444	23.13%	2.192%
28	4.190	961	964	965	rBV3	1463	546	0.05%	0.004%
29	4.222	972	974	976	rBV3	1082	668	0.06%	0.005%
30	4.251	981	983	986	rVV4	1748	984	0.08%	0.008%
31	4.309	998	1001	1002	rBV3	1202	601	0.05%	0.005%
32	4.370	1008	1020	1040	rVB	215602	524192	43.85%	4.157%
33	4.608	1091	1094	1096	rBV3	975	574	0.05%	0.005%
34	4.859	1169	1172	1174	rBV2	935	446	0.04%	0.004%

Data Path : Z:\VOASRV\HPCHEM1\MSVOA V\DATA\VV061220\
 Data File : VV016896.D
 Acq On : 12 Jun 2020 22:09
 Operator : SY/MD
 Sample : L2914-08 10X
 Misc : 5.0mL/MSVOA V/WATER
 ALS Vial : 26 Sample Multiplier: 1

Instrument :
 MSVOA_V
 ClientSampleId :
 F9E03

Integration Parameters: LSCINT.P

Integrator: RTE
 Smoothing : OFF
 Sampling : 1
 Start Thrs: 0.2
 Stop Thrs : 0

Filtering: 5
 Min Area: 0 % of largest Peak
 Max Peaks: 100
 Peak Location: TOP

If leading or trailing edge < 100 prefer < Baseline drop else tangent >
 Peak separation: 5

Method : Z:\VOASRV\HPCHEM1\MSVOA_V\METHOD\SOMVLM060820WMA.M
 Title : VOC Analysis

35	4.875	1174	1177	1182	rVB6	1103	964	0.08%	0.008%
36	4.894	1182	1183	1187	rVB3	1923	910	0.08%	0.007%
37	4.920	1187	1191	1193	rBV2	928	650	0.05%	0.005%
38	4.939	1193	1197	1198	rBV4	1866	1138	0.10%	0.009%
39	5.068	1220	1237	1242	rBV3	532323	1195306	100.00%	9.478%
40	5.637	1401	1414	1436	rBV	435232	871606	72.92%	6.912%
41	5.926	1493	1504	1515	rBV2	20875	44865	3.75%	0.356%
42	6.090	1543	1555	1586	rVB	300338	623327	52.15%	4.943%
43	6.370	1640	1642	1644	rBV2	1025	522	0.04%	0.004%
44	6.527	1689	1691	1692	rBV2	903	351	0.03%	0.003%
45	6.752	1760	1761	1766	rVB4	1613	783	0.07%	0.006%
46	6.884	1799	1802	1805	rBV5	1627	1100	0.09%	0.009%
47	6.929	1814	1816	1820	rBV4	1185	760	0.06%	0.006%
48	7.006	1829	1840	1858	rBV2	177412	320669	26.83%	2.543%
49	7.257	1914	1918	1920	rBV5	2949	2153	0.18%	0.017%
50	7.334	1930	1942	1956	rBV	625012	1071742	89.66%	8.499%
51	7.543	1999	2007	2023	rVB	29980	54119	4.53%	0.429%
52	7.640	2028	2037	2053	rVV	123866	209108	17.49%	1.658%
53	7.939	2125	2130	2133	rBV7	1438	1177	0.10%	0.009%
54	7.952	2133	2134	2135	rBV	1561	553	0.05%	0.004%
55	7.987	2142	2145	2146	rBV3	1692	975	0.08%	0.008%
56	8.029	2155	2158	2160	rBV4	1824	1153	0.10%	0.009%
57	8.113	2173	2184	2211	rBV	315533	652697	54.61%	5.176%
58	8.415	2275	2278	2280	rBV3	1128	821	0.07%	0.007%
59	8.495	2300	2303	2305	rBV4	1177	681	0.06%	0.005%
60	8.518	2306	2310	2313	rVB6	1967	1500	0.13%	0.012%
61	8.643	2347	2349	2354	rVB5	1539	1234	0.10%	0.010%
62	8.698	2364	2366	2369	rVB5	1233	625	0.05%	0.005%
63	8.871	2409	2420	2430	rBV	653392	1055046	88.27%	8.366%
64	9.032	2461	2470	2483	rBV	77261	122220	10.22%	0.969%
65	9.161	2502	2510	2528	rVB	186745	315370	26.38%	2.501%
66	9.283	2541	2548	2555	rBV4	24438	39462	3.30%	0.313%
67	9.469	2599	2606	2616	rBV5	27822	49648	4.15%	0.394%
68	9.566	2629	2636	2648	rVB	69742	108776	9.10%	0.863%
69	9.704	2674	2679	2681	rBV5	2688	2888	0.24%	0.023%
70	9.743	2683	2691	2703	rVB8	12469	25212	2.11%	0.200%
71	9.932	2748	2750	2752	rBV4	1897	824	0.07%	0.007%

Data Path : Z:\VOASRV\HPCHEM1\MSVOA V\DATA\VV061220\
 Data File : VV016896.D
 Acq On : 12 Jun 2020 22:09
 Operator : SY/MD
 Sample : L2914-08 10X
 Misc : 5.0mL/MSVOA V/WATER
 ALS Vial : 26 Sample Multiplier: 1

Instrument :
 MSVOA_V
 ClientSampleId :
 F9E03

Integration Parameters: LSCINT.P

Integrator: RTE
 Smoothing : OFF
 Sampling : 1
 Start Thrs: 0.2
 Stop Thrs : 0

Filtering: 5
 Min Area: 0 % of largest Peak
 Max Peaks: 100
 Peak Location: TOP

If leading or trailing edge < 100 prefer < Baseline drop else tangent >
 Peak separation: 5

Method : Z:\VOASRV\HPCHEM1\MSVOA_V\METHOD\SOMVLM060820WMA.M
 Title : VOC Analysis

72	10.074	2789	2794	2795	rBV4	2459	1939	0.16%	0.015%
73	10.238	2834	2845	2860	rBV	417159	671631	56.19%	5.326%
74	10.759	3000	3007	3015	rBV2	34465	59653	4.99%	0.473%
75	10.936	3054	3062	3073	rBV	70620	106699	8.93%	0.846%
76	11.270	3156	3166	3184	rVB	741045	1134799	94.94%	8.999%
77	11.357	3186	3193	3207	rVB	60863	91519	7.66%	0.726%
78	11.553	3243	3254	3268	rBV2	30634	60489	5.06%	0.480%
79	11.646	3273	3283	3305	rVB	734902	1163605	97.35%	9.227%
80	12.254	3470	3472	3474	rBV3	1103	545	0.05%	0.004%
81	12.749	3619	3626	3630	rBV10	6007	7618	0.64%	0.060%
82	13.161	3752	3754	3755	rBV2	1129	498	0.04%	0.004%
83	13.331	3805	3807	3809	rBV2	2388	1250	0.10%	0.010%
84	13.527	3859	3868	3883	rVB	48778	77227	6.46%	0.612%
85	13.614	3892	3895	3896	rBV3	1371	614	0.05%	0.005%
86	13.649	3897	3906	3919	rVV2	9920	18763	1.57%	0.149%
87	13.701	3920	3922	3926	rVB5	1647	1047	0.09%	0.008%
88	13.752	3935	3938	3941	rBV4	1421	939	0.08%	0.007%
89	13.771	3942	3944	3947	rVV4	2115	1099	0.09%	0.009%
90	13.791	3947	3950	3953	rVB4	2305	1550	0.13%	0.012%
91	13.852	3967	3969	3970	rBV2	956	382	0.03%	0.003%
92	14.373	4129	4131	4135	rVB4	1933	1360	0.11%	0.011%
93	14.431	4147	4149	4152	rBV3	1296	929	0.08%	0.007%
94	14.447	4152	4154	4156	rBV3	1091	585	0.05%	0.005%
95	14.611	4195	4205	4212	rBV3	3219	6157	0.52%	0.049%
96	14.849	4269	4279	4290	rBV10	9271	16410	1.37%	0.130%
97	14.945	4307	4309	4313	rVB3	1921	1136	0.10%	0.009%
98	14.968	4313	4316	4319	rBV4	2109	1427	0.12%	0.011%
99	15.048	4338	4341	4343	rBV4	1667	681	0.06%	0.005%
100	15.379	4442	4444	4448	rBV3	1677	1144	0.10%	0.009%

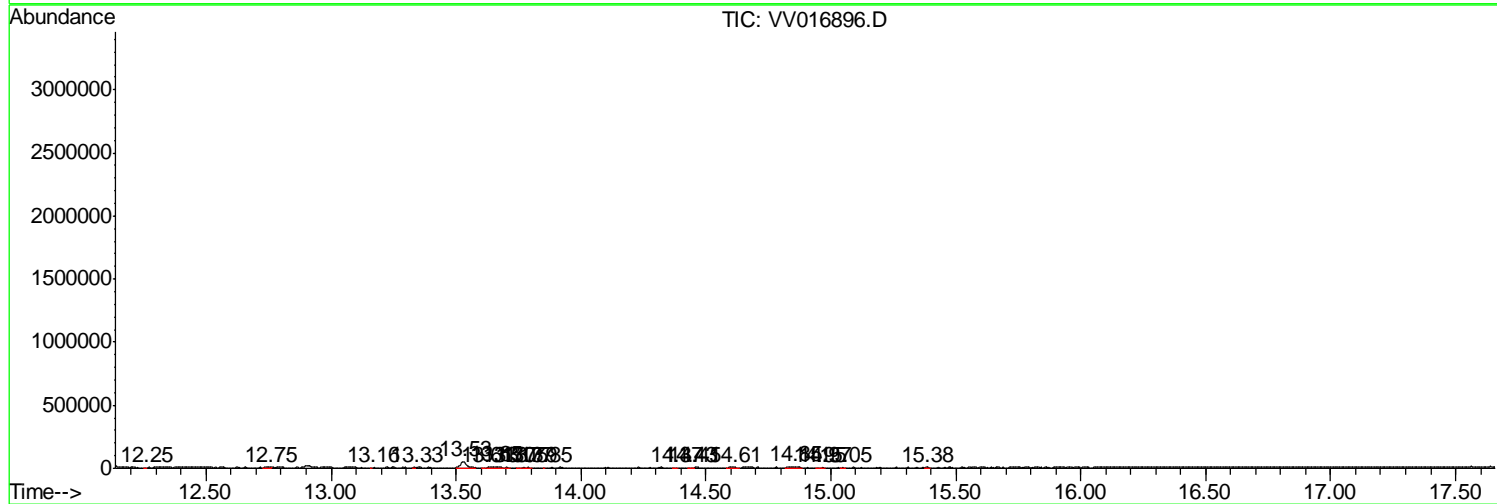
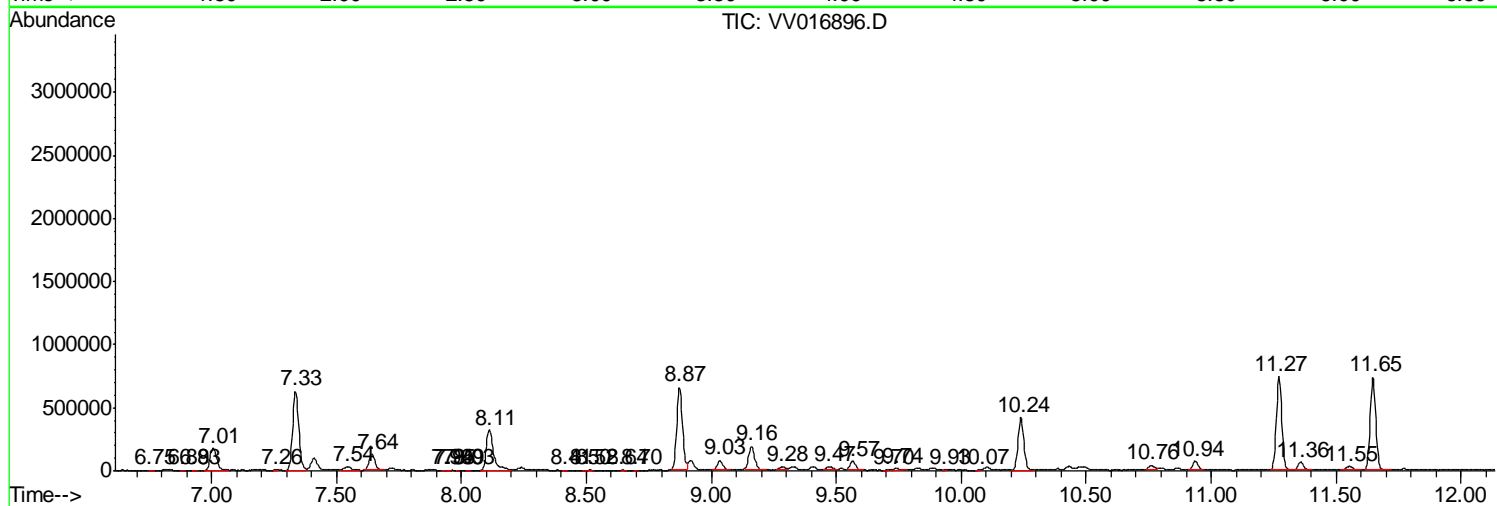
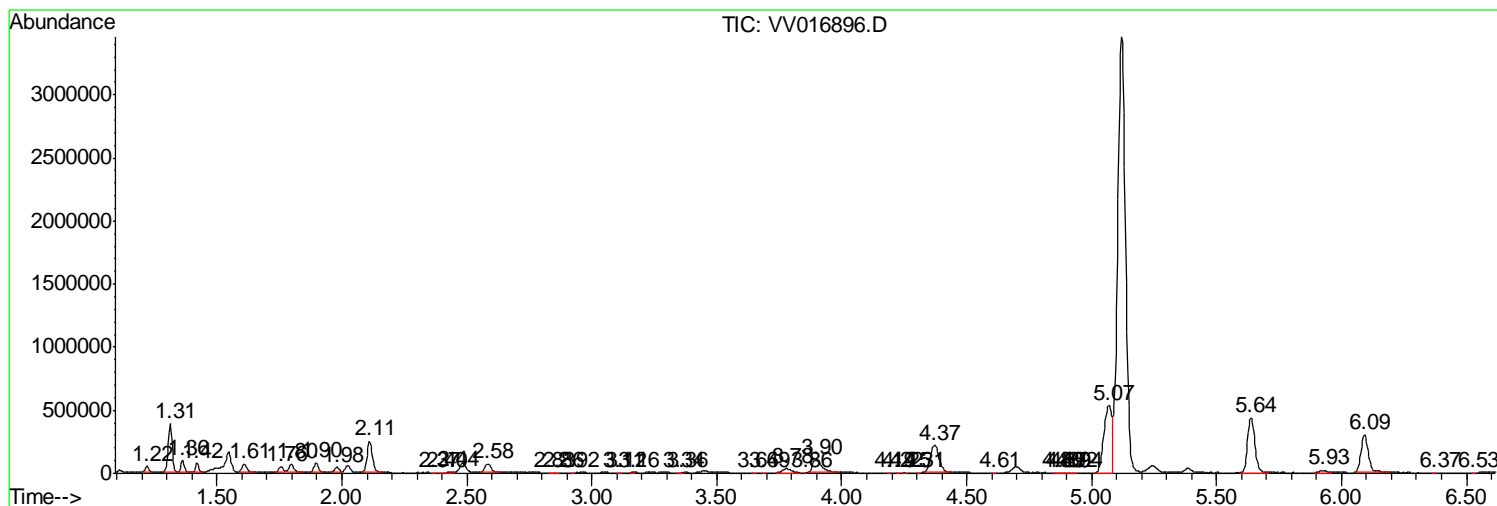
Sum of corrected areas: 12610710

Data Path : Z:\VOASRV\HPCHEM1\MSVOA V\DATA\VV061220\
 Data File : VV016896.D
 Acq On : 12 Jun 2020 22:09
 Operator : SY/MD
 Sample : L2914-08 10X
 Misc : 5.0mL/MSVOA V/WATER
 ALS Vial : 26 Sample Multiplier: 1

Instrument :
 MSVOA_V
 ClientSampleId :
 F9E03

Quant Method : Z:\VOASRV\HPCHEM1\MSVOA_V\METHOD\SOMVLM060820WMA.M
 Quant Title : VOC Analysis

TIC Library : C:\DATABASE\NIST11.L
 TIC Integration Parameters: LSCINT.P



Data Path : Z:\VOASRV\HPCHEM1\MSVOA V\DATA\VV061220\
 Data File : VV016896.D
 Acq On : 12 Jun 2020 22:09
 Operator : SY/MD
 Sample : L2914-08 10X
 Misc : 5.0mL/MSVOA V/WATER
 ALS Vial : 26 Sample Multiplier: 1

Instrument :
 MSVOA_V
 ClientSampled :
 F9E03

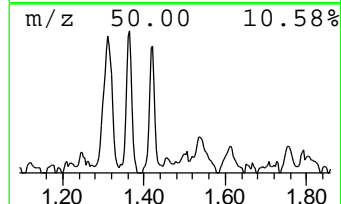
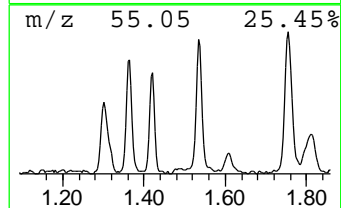
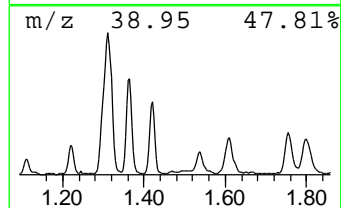
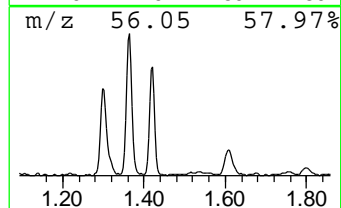
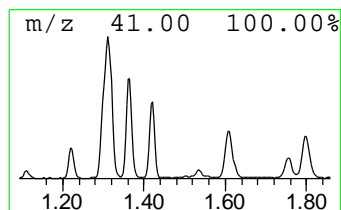
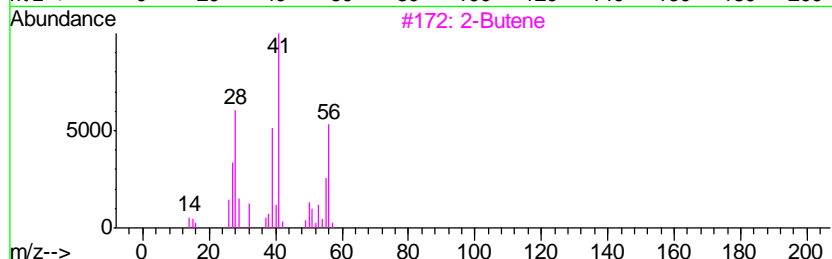
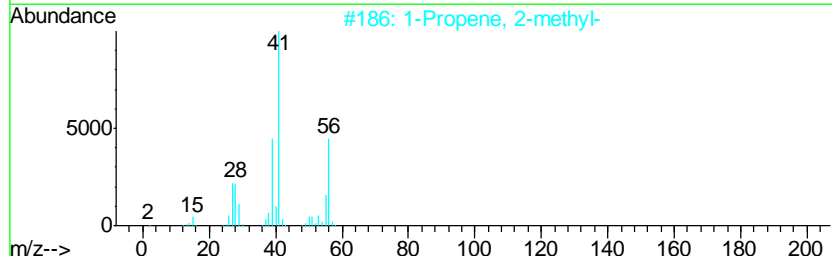
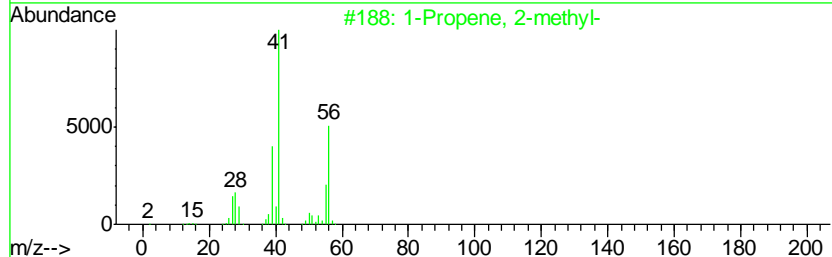
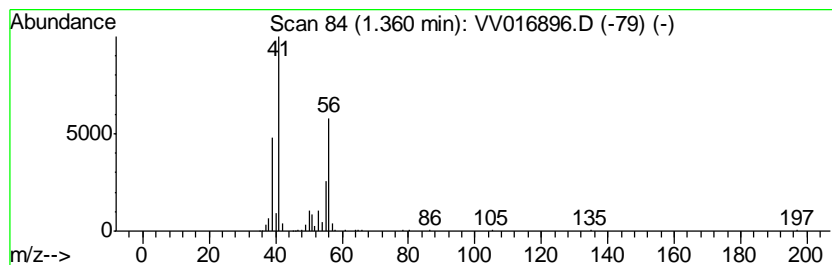
Quant Method : Z:\VOASRV\HPCHEM1\MSVOA_V\METHOD\SOMVLM060820WMA.M
 Quant Title : VOC Analysis

TIC Library : C:\DATABASE\NIST11.L
 TIC Integration Parameters: LSCINT.P

 Peak Number 1 (DEL) Alkane: Straight-Chai... Concentration Rank 6

R.T.	EstConc	Area	Relative to ISTD	R.T.
1.36	5.12 ug/L	89285	1,4-Difluorobenzene	5.64

Hit#	of	Tentative ID	MW	MolForm	CAS#	Qual
1	5	1-Propene, 2-methyl-	56	C4H8	000115-11-7	90
2		1-Propene, 2-methyl-	56	C4H8	000115-11-7	87
3		2-Butene	56	C4H8	000107-01-7	74
4		2-Butene, (Z)-	56	C4H8	000590-18-1	74
5		2-Butene	56	C4H8	000107-01-7	72



Data Path : Z:\VOASRV\HPCHEM1\MSVOA V\DATA\VV061220\
 Data File : VV016896.D
 Acq On : 12 Jun 2020 22:09
 Operator : SY/MD
 Sample : L2914-08 10X
 Misc : 5.0mL/MSVOA V/WATER
 ALS Vial : 26 Sample Multiplier: 1

Instrument :
 MSVOA_V
 ClientSampled :
 F9E03

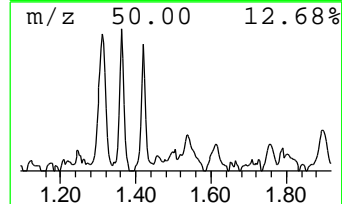
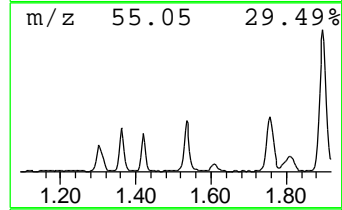
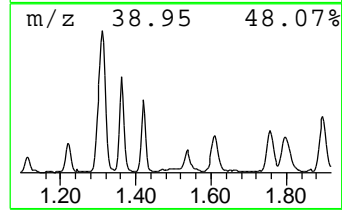
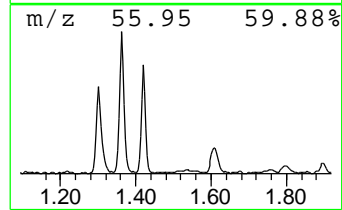
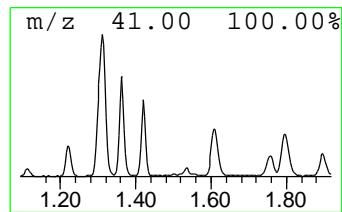
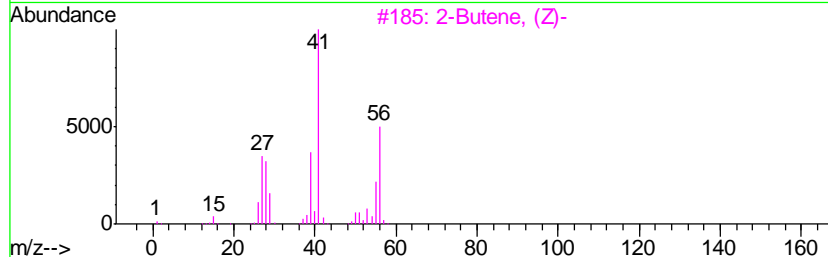
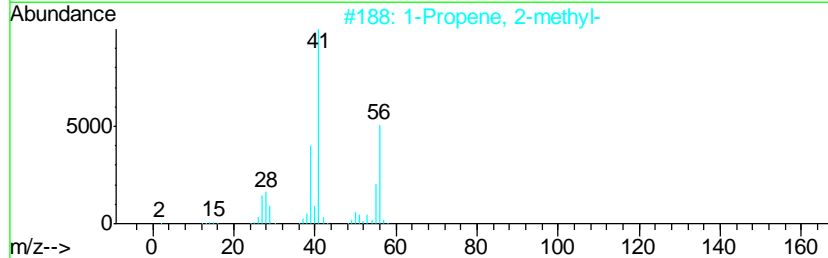
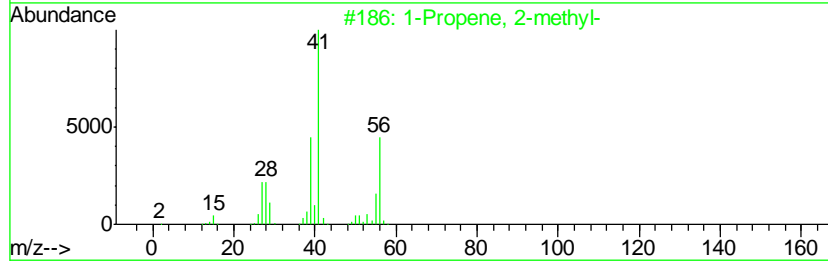
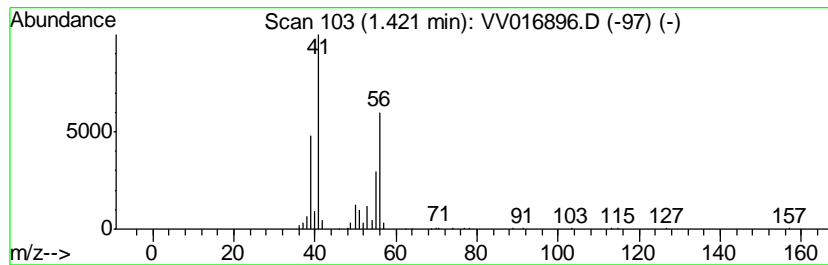
Quant Method : Z:\VOASRV\HPCHEM1\MSVOA_V\METHOD\SOMVLM060820WMA.M
 Quant Title : VOC Analysis

TIC Library : C:\DATABASE\NIST11.L
 TIC Integration Parameters: LSCINT.P

 Peak Number 2 (DEL) Alkane: Straight-Chai... Concentration Rank 10

R.T.	EstConc	Area	Relative to ISTD	R.T.
1.42	3.63 ug/L	63263	1,4-Difluorobenzene	5.64

Hit#	of	Tentative ID	MW	MolForm	CAS#	Qual
1	5	1-Propene, 2-methyl-	56	C4H8	000115-11-7	87
2		1-Propene, 2-methyl-	56	C4H8	000115-11-7	72
3		2-Butene, (Z)-	56	C4H8	000590-18-1	68
4		2-Butene, (E)-	56	C4H8	000624-64-6	68
5		2-Butene, (Z)-	56	C4H8	000590-18-1	68



Data Path : Z:\VOASRV\HPCHEM1\MSVOA V\DATA\VV061220\
 Data File : VV016896.D
 Acq On : 12 Jun 2020 22:09
 Operator : SY/MD
 Sample : L2914-08 10X
 Misc : 5.0mL/MSVOA V/WATER
 ALS Vial : 26 Sample Multiplier: 1

Instrument :
 MSVOA_V
 ClientSampled :
 F9E03

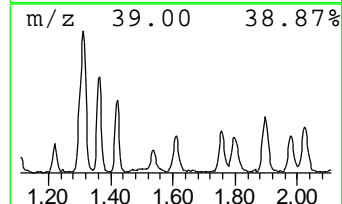
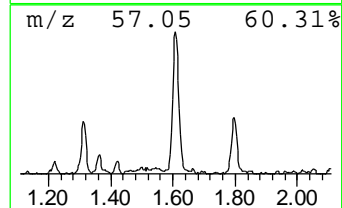
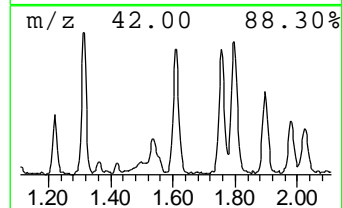
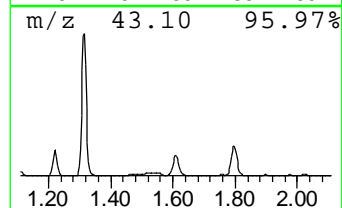
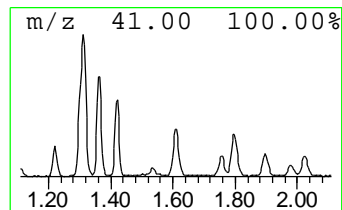
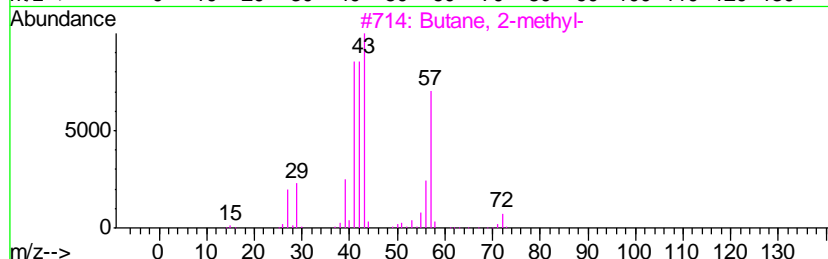
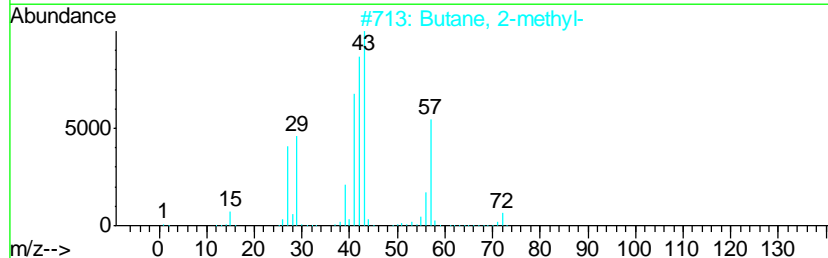
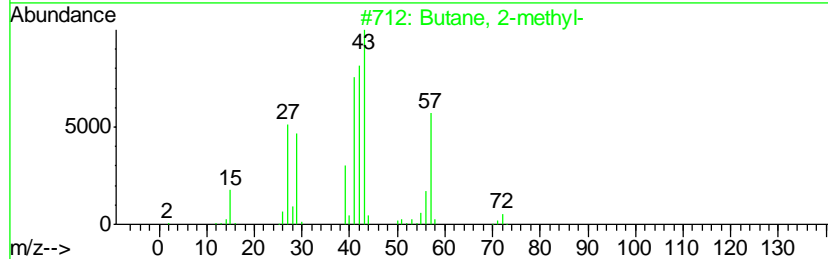
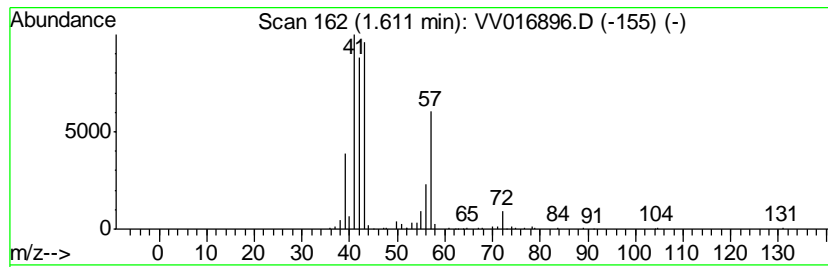
Quant Method : Z:\VOASRV\HPCHEM1\MSVOA_V\METHOD\SOMVLM060820WMA.M
 Quant Title : VOC Analysis

TIC Library : C:\DATABASE\NIST11.L
 TIC Integration Parameters: LSCINT.P

 Peak Number 3 (DEL) Alkane: Straight-Chai... Concentration Rank 4

R.T.	EstConc	Area	Relative to ISTD	R.T.
1.61	5.18 ug/L	90371	1,4-Difluorobenzene	5.64

Hit#	of	Tentative ID	MW	MolForm	CAS#	Qual
1	5	Butane, 2-methyl-	72	C5H12	000078-78-4	86
2		Butane, 2-methyl-	72	C5H12	000078-78-4	80
3		Butane, 2-methyl-	72	C5H12	000078-78-4	80
4		Butane, 2,3-dimethyl-	86	C6H14	000079-29-8	36
5		Pentane	72	C5H12	000109-66-0	33



Data Path : Z:\VOASRV\HPCHEM1\MSVOA V\DATA\VV061220\
 Data File : VV016896.D
 Acq On : 12 Jun 2020 22:09
 Operator : SY/MD
 Sample : L2914-08 10X
 Misc : 5.0mL/MSVOA V/WATER
 ALS Vial : 26 Sample Multiplier: 1

Instrument :
 MSVOA_V
 ClientSampled :
 F9E03

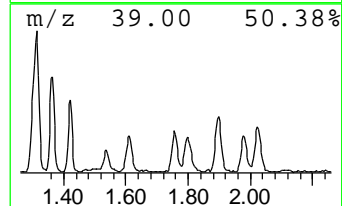
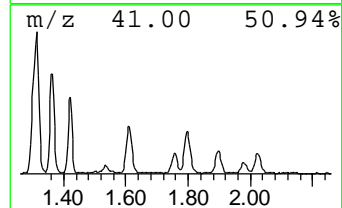
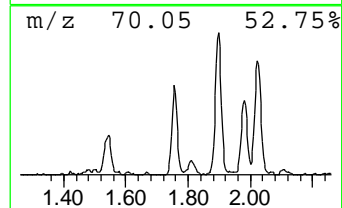
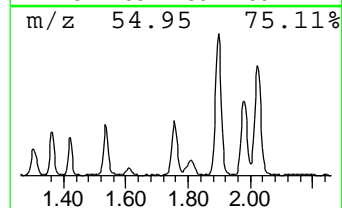
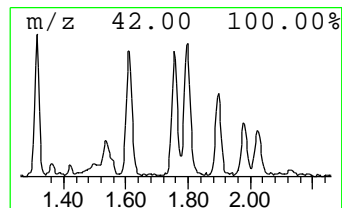
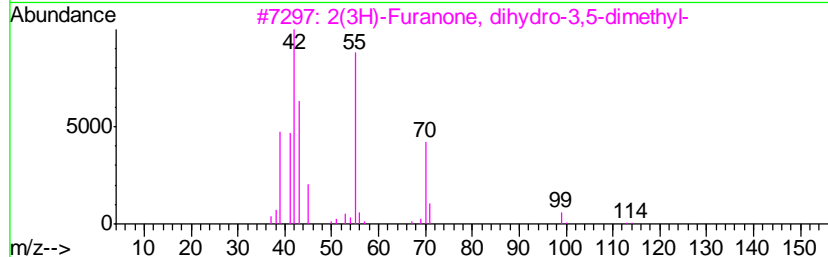
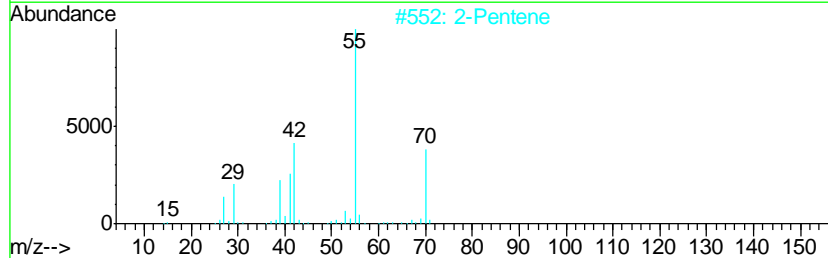
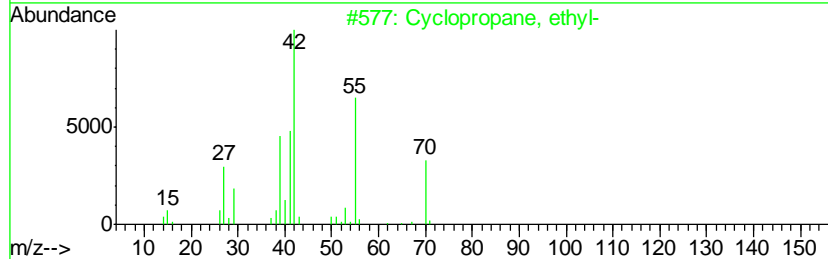
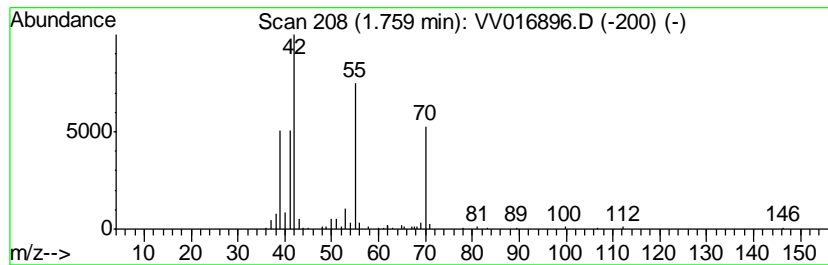
Quant Method : Z:\VOASRV\HPCHEM1\MSVOA_V\METHOD\SOMVLM060820WMA.M
 Quant Title : VOC Analysis

TIC Library : C:\DATABASE\NIST11.L
 TIC Integration Parameters: LSCINT.P

 Peak Number 4 (DEL) Alkane: Cyclic1.76 Concentration Rank 11

R.T.	EstConc	Area	Relative to ISTD	R.T.
1.76	3.42 ug/L	59684	1,4-Difluorobenzene	5.64

Hit#	of	Tentative ID	MW	MolForm	CAS#	Qual
1	5	Cyclopropane, ethyl-	70	C5H10	001191-96-4	90
2		2-Pentene	70	C5H10	000109-68-2	80
3		2(3H)-Furanone, dihydro-3,5-dime...	114	C6H10O2	005145-01-7	78
4		Cyclopropane, ethyl-	70	C5H10	001191-96-4	68
5		1-Pentene	70	C5H10	000109-67-1	64



Data Path : Z:\VOASRV\HPCHEM1\MSVOA V\DATA\VV061220\
 Data File : VV016896.D
 Acq On : 12 Jun 2020 22:09
 Operator : SY/MD
 Sample : L2914-08 10X
 Misc : 5.0mL/MSVOA V/WATER
 ALS Vial : 26 Sample Multiplier: 1

Instrument :
 MSVOA_V
 ClientSampleID :
 F9E03

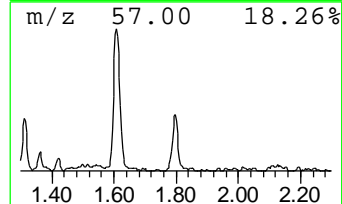
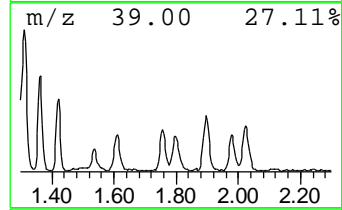
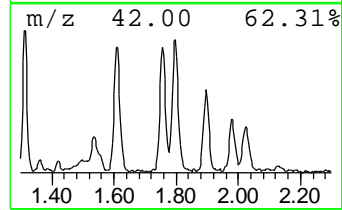
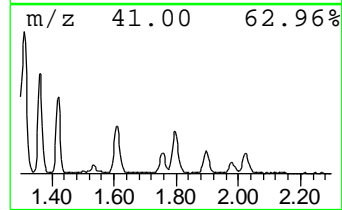
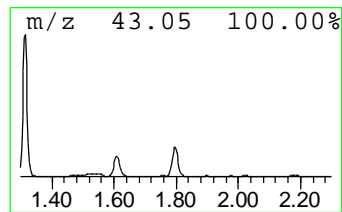
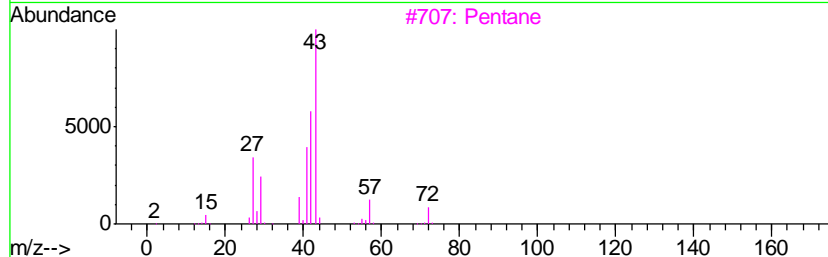
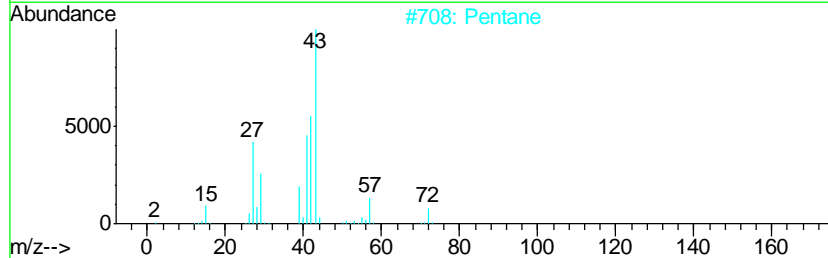
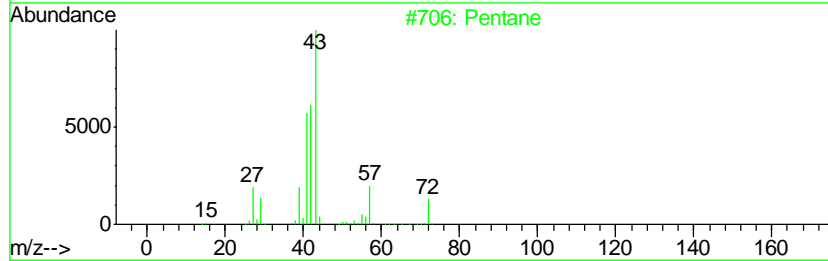
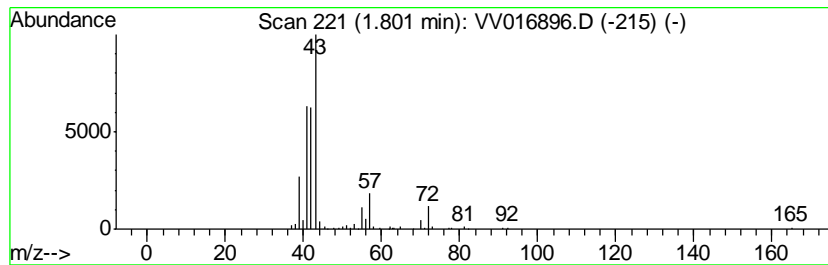
Quant Method : Z:\VOASRV\HPCHEM1\MSVOA_V\METHOD\SOMVLM060820WMA.M
 Quant Title : VOC Analysis

TIC Library : C:\DATABASE\NIST11.L
 TIC Integration Parameters: LSCINT.P

 Peak Number 5 (DEL) Alkane: Straight-Chai... Concentration Rank 5

R.T.	EstConc	Area	Relative to ISTD	R.T.
1.80	5.13 ug/L	89472	1,4-Difluorobenzene	5.64

Hit#	of	Tentative ID	MW	MolForm	CAS#	Qual
1	5	Pentane	72	C5H12	000109-66-0	90
2		Pentane	72	C5H12	000109-66-0	86
3		Pentane	72	C5H12	000109-66-0	86
4		Pentane	72	C5H12	000109-66-0	78
5		1-Propanol, 2-methyl-	74	C4H10O	000078-83-1	45



Data Path : Z:\VOASRV\HPCHEM1\MSVOA V\DATA\VV061220\
 Data File : VV016896.D
 Acq On : 12 Jun 2020 22:09
 Operator : SY/MD
 Sample : L2914-08 10X
 Misc : 5.0mL/MSVOA V/WATER
 ALS Vial : 26 Sample Multiplier: 1

Instrument :
 MSVOA_V
 ClientSampled :
 F9E03

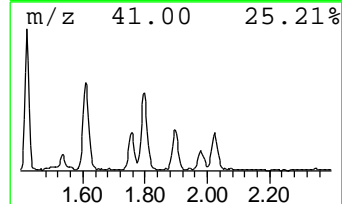
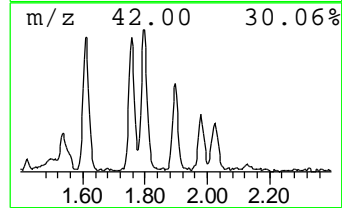
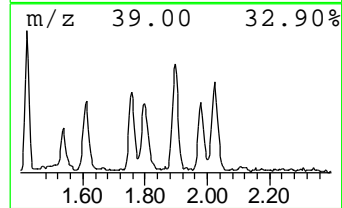
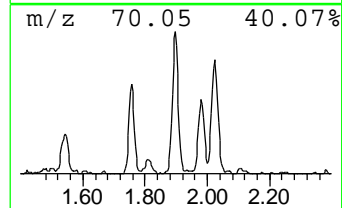
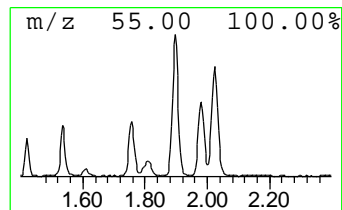
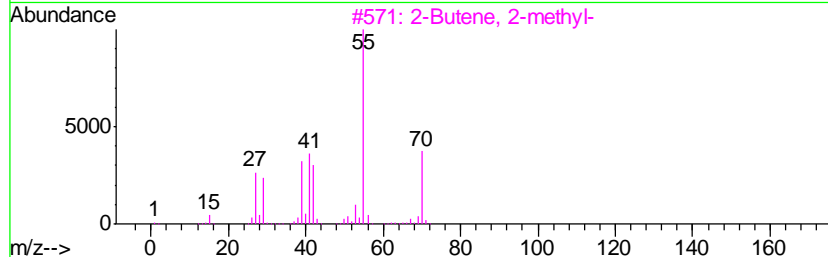
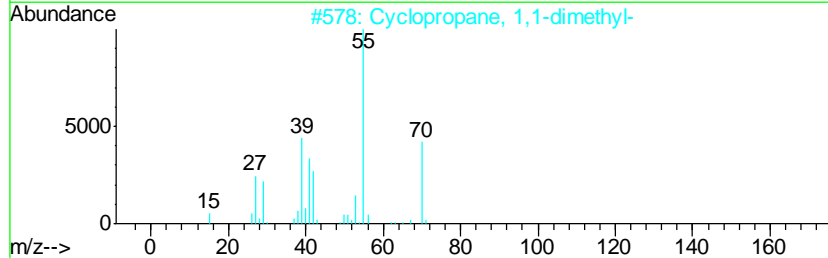
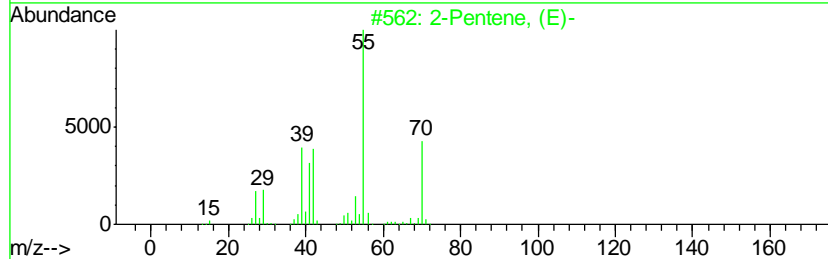
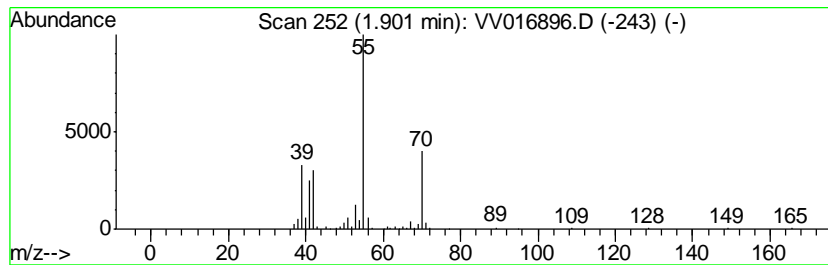
Quant Method : Z:\VOASRV\HPCHEM1\MSVOA_V\METHOD\SOMVLM060820WMA.M
 Quant Title : VOC Analysis

TIC Library : C:\DATABASE\NIST11.L
 TIC Integration Parameters: LSCINT.P

 Peak Number 6 (DEL) Alkane: Straight-Chai... Concentration Rank 3

R.T.	EstConc	Area	Relative to ISTD	R.T.
1.90	5.39 ug/L	94032	1,4-Difluorobenzene	5.64

Hit#	of	Tentative ID	MW	MolForm	CAS#	Qual
1	5	2-Pentene, (E)-	70	C5H10	000646-04-8	93
2		Cyclopropane, 1,1-dimethyl-	70	C5H10	001630-94-0	87
3		2-Butene, 2-methyl-	70	C5H10	000513-35-9	87
4		Cyclopropane, 1,2-dimethyl-, cis-	70	C5H10	000930-18-7	87
5		2-Pentene, (E)-	70	C5H10	000646-04-8	86



Data Path : Z:\VOASRV\HPCHEM1\MSVOA V\DATA\VV061220\
 Data File : VV016896.D
 Acq On : 12 Jun 2020 22:09
 Operator : SY/MD
 Sample : L2914-08 10X
 Misc : 5.0mL/MSVOA V/WATER
 ALS Vial : 26 Sample Multiplier: 1

Instrument :
 MSVOA_V
 ClientSampled :
 F9E03

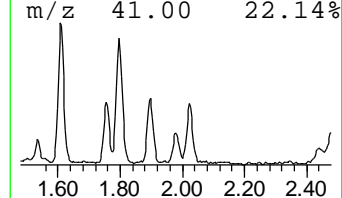
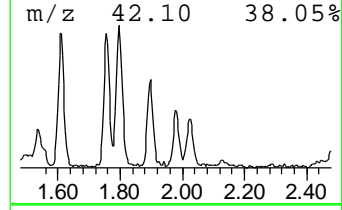
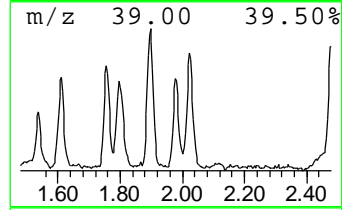
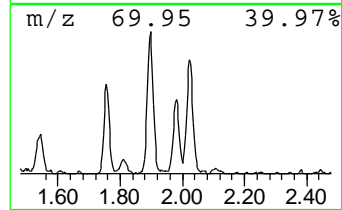
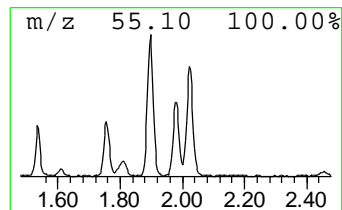
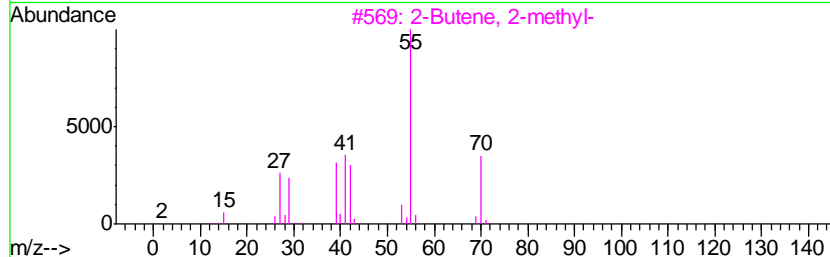
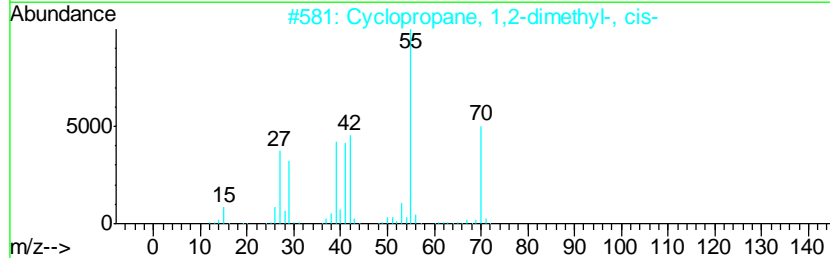
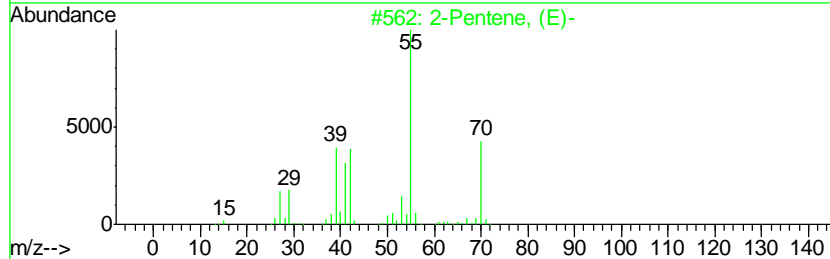
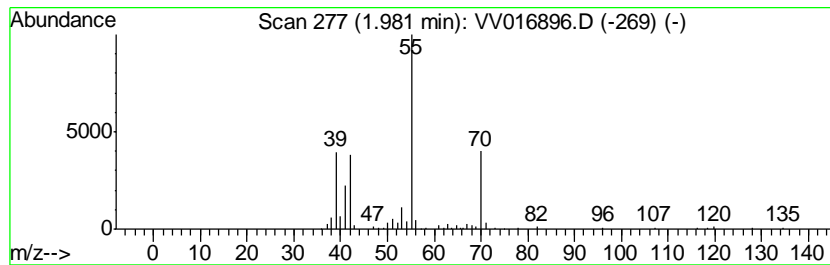
Quant Method : Z:\VOASRV\HPCHEM1\MSVOA_V\METHOD\SOMVLM060820WMA.M
 Quant Title : VOC Analysis

TIC Library : C:\DATABASE\NIST11.L
 TIC Integration Parameters: LSCINT.P

 Peak Number 7 (DEL) Alkane: Straight-Chai... Concentration Rank 13

R.T.	EstConc	Area	Relative to ISTD	R.T.
1.98	3.16 ug/L	55032	1,4-Difluorobenzene	5.64

Hit#	of	Tentative ID	MW	MolForm	CAS#	Qual
1	5	2-Pentene, (E)-	70	C5H10	000646-04-8	90
2		Cyclopropane, 1,2-dimethyl-, cis-	70	C5H10	000930-18-7	87
3		2-Butene, 2-methyl-	70	C5H10	000513-35-9	86
4		2-Methyl-1-butene	70	C5H10	000563-46-2	86
5		Cyclopropane, 1,1-dimethyl-	70	C5H10	001630-94-0	72



Data Path : Z:\VOASRV\HPCHEM1\MSVOA V\DATA\VV061220\
 Data File : VV016896.D
 Acq On : 12 Jun 2020 22:09
 Operator : SY/MD
 Sample : L2914-08 10X
 Misc : 5.0mL/MSVOA V/WATER
 ALS Vial : 26 Sample Multiplier: 1

Instrument :
 MSVOA_V
 ClientSampleID :
 F9E03

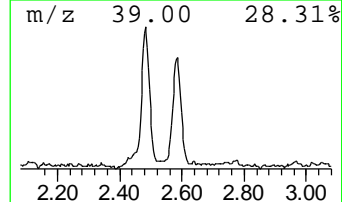
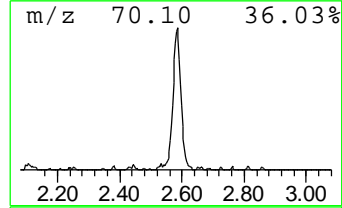
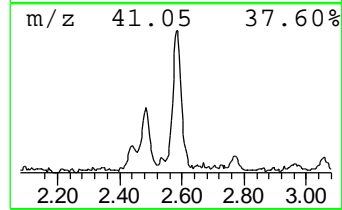
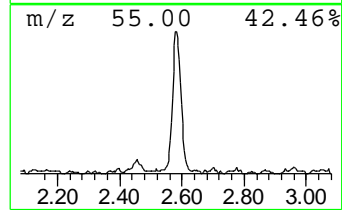
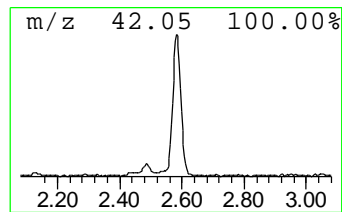
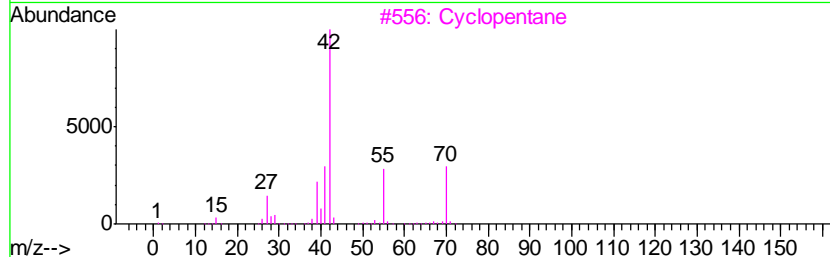
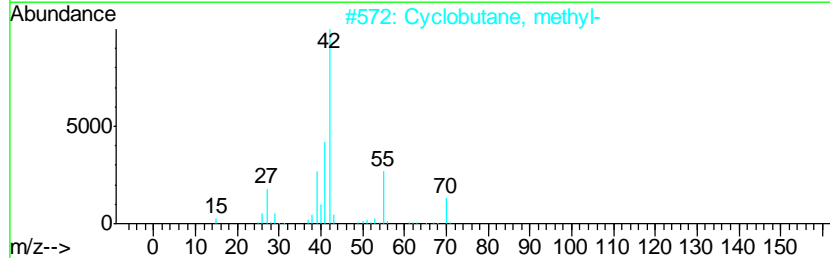
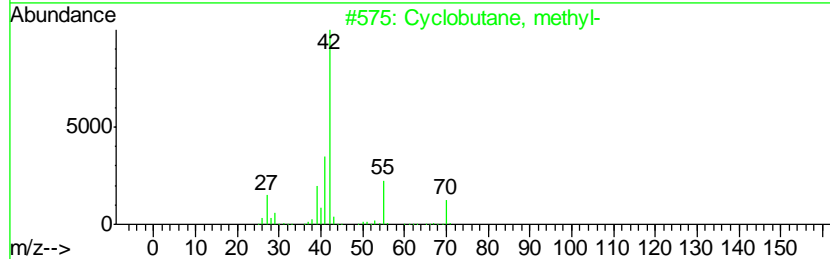
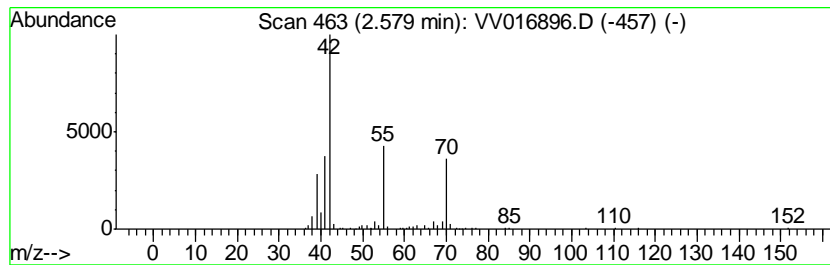
Quant Method : Z:\VOASRV\HPCHEM1\MSVOA_V\METHOD\SOMVLM060820WMA.M
 Quant Title : VOC Analysis

TIC Library : C:\DATABASE\NIST11.L
 TIC Integration Parameters: LSCINT.P

 Peak Number 8 (DEL) Alkane: Cyclic2.58 Concentration Rank 2

R.T.	EstConc	Area	Relative to ISTD	R.T.
2.58	6.63 ug/L	115655	1,4-Difluorobenzene	5.64

Hit#	of	Tentative ID	MW	MolForm	CAS#	Qual
1	5	Cyclobutane, methyl-	70	C5H10	000598-61-8	80
2		Cyclobutane, methyl-	70	C5H10	000598-61-8	80
3		Cyclopentane	70	C5H10	000287-92-3	72
4		1-Pentene	70	C5H10	000109-67-1	50
5		1-Pentene	70	C5H10	000109-67-1	50



Data Path : Z:\VOASRV\HPCHEM1\MSVOA V\DATA\VV061220\
 Data File : VV016896.D
 Acq On : 12 Jun 2020 22:09
 Operator : SY/MD
 Sample : L2914-08 10X
 Misc : 5.0mL/MSVOA V/WATER
 ALS Vial : 26 Sample Multiplier: 1

Instrument :
 MSVOA_V
 ClientSampled :
 F9E03

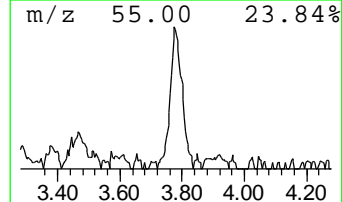
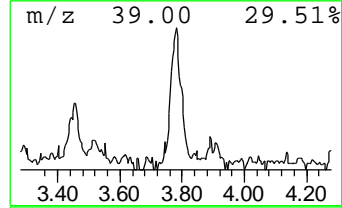
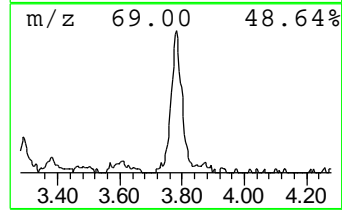
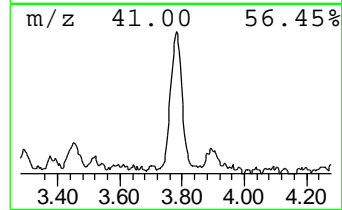
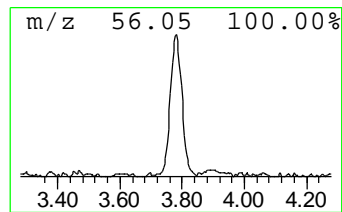
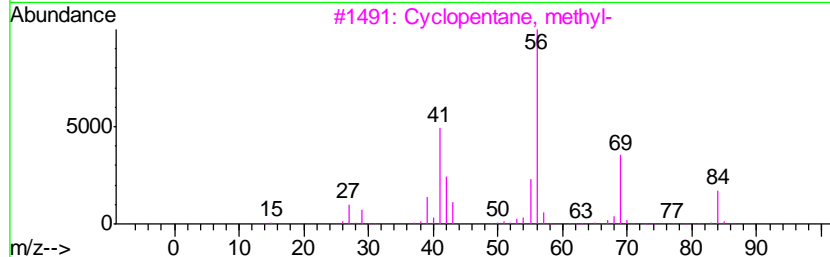
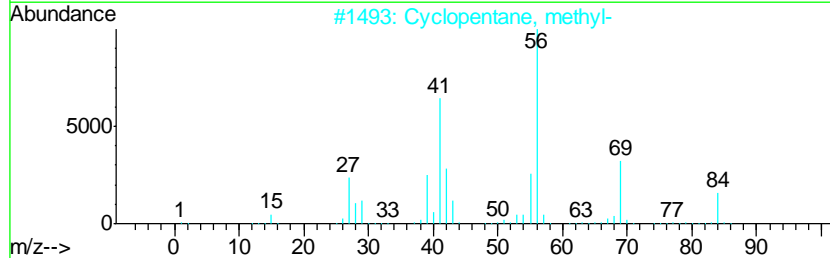
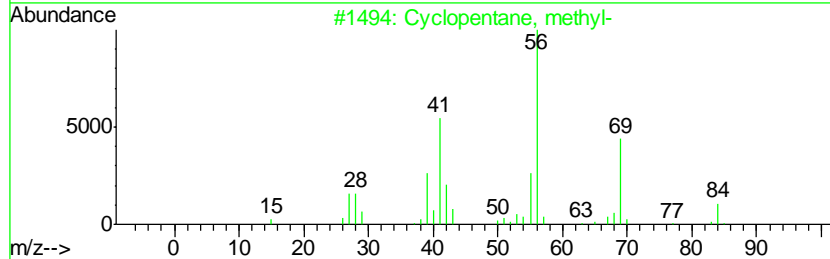
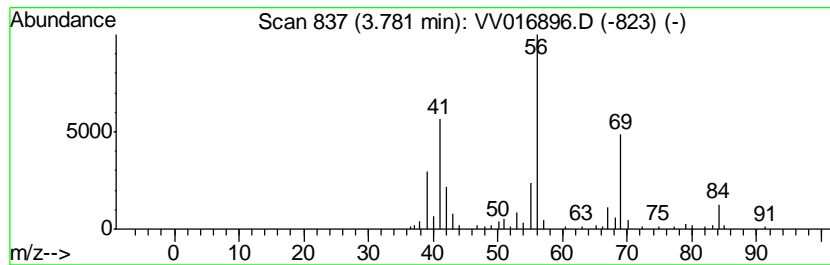
Quant Method : Z:\VOASRV\HPCHEM1\MSVOA_V\METHOD\SOMVLM060820WMA.M
 Quant Title : VOC Analysis

TIC Library : C:\DATABASE\NIST11.L
 TIC Integration Parameters: LSCINT.P

 Peak Number 9 (DEL) Alkane: Cyclic3.78 Concentration Rank 7

R.T.	EstConc	Area	Relative to ISTD	R.T.
3.78	4.90 ug/L	85331	1,4-Difluorobenzene	5.64

Hit#	of	Tentative ID	MW	MolForm	CAS#	Qual
1	5	Cyclopentane, methyl-	84	C6H12	000096-37-7	87
2		Cyclopentane, methyl-	84	C6H12	000096-37-7	72
3		Cyclopentane, methyl-	84	C6H12	000096-37-7	64
4		Propane, 2-cyclopropyl-	84	C6H12	003638-35-5	64
5		1H-Tetrazole, 5-methyl-	84	C2H4N4	004076-36-2	64



Data Path : Z:\VOASRV\HPCHEM1\MSVOA V\DATA\VV061220\
 Data File : VV016896.D
 Acq On : 12 Jun 2020 22:09
 Operator : SY/MD
 Sample : L2914-08 10X
 Misc : 5.0mL/MSVOA V/WATER
 ALS Vial : 26 Sample Multiplier: 1

Instrument :
 MSVOA_V
 ClientSampled :
 F9E03

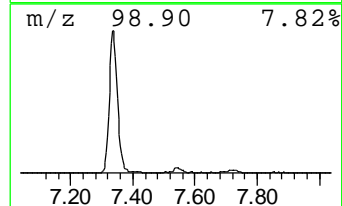
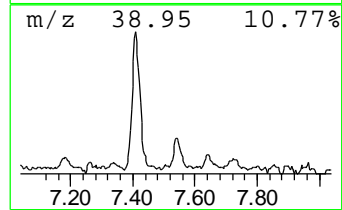
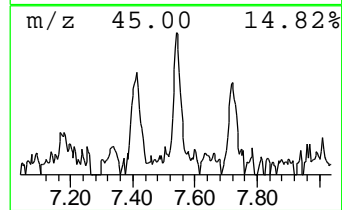
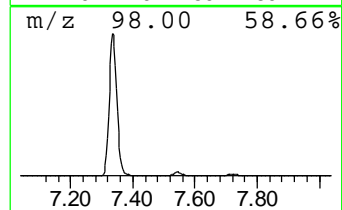
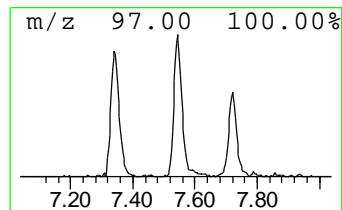
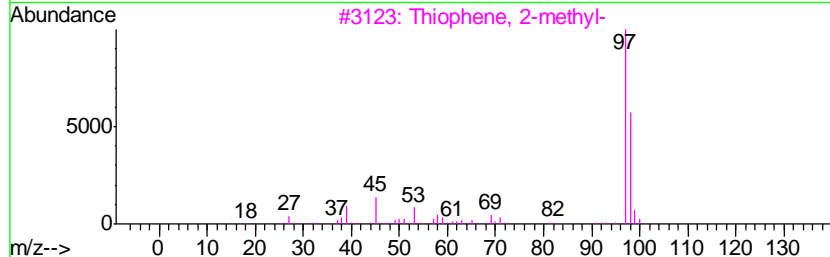
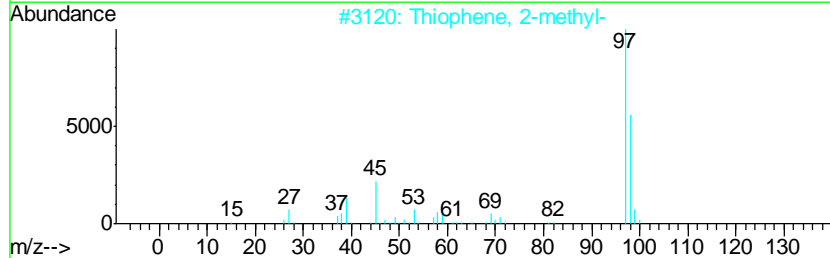
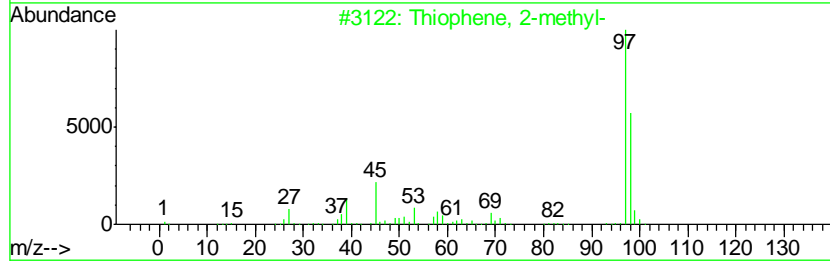
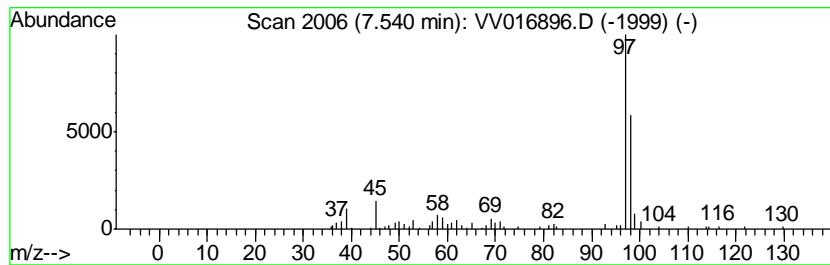
Quant Method : Z:\VOASRV\HPCHEM1\MSVOA_V\METHOD\SOMVLM060820WMA.M
 Quant Title : VOC Analysis

TIC Library : C:\DATABASE\NIST11.L
 TIC Integration Parameters: LSCINT.P

 Peak Number 12 Thiophene, 2-methyl- Concentration Rank 17

R.T.	EstConc	Area	Relative to ISTD	R.T.
7.54	2.56 ug/L	54119	Chlorobenzene-d5	8.87

Hit#	of	Tentative ID	MW	MolForm	CAS#	Qual
1	5	Thiophene, 2-methyl-	98	C5H6S	000554-14-3	91
2		Thiophene, 2-methyl-	98	C5H6S	000554-14-3	90
3		Thiophene, 2-methyl-	98	C5H6S	000554-14-3	90
4		Thiophene, 3-methyl-	98	C5H6S	000616-44-4	87
5		Thiophene, 3-methyl-	98	C5H6S	000616-44-4	87



Data Path : Z:\VOASRV\HPCHEM1\MSVOA V\DATA\VV061220\
 Data File : VV016896.D
 Acq On : 12 Jun 2020 22:09
 Operator : SY/MD
 Sample : L2914-08 10X
 Misc : 5.0mL/MSVOA V/WATER
 ALS Vial : 26 Sample Multiplier: 1

Instrument :
 MSVOA_V
 ClientSampled :
 F9E03

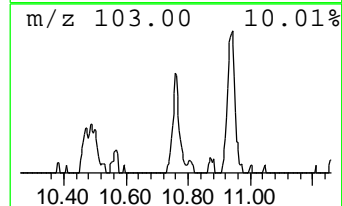
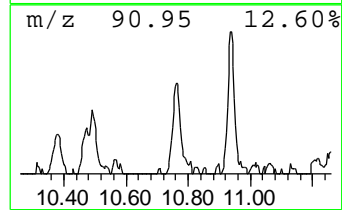
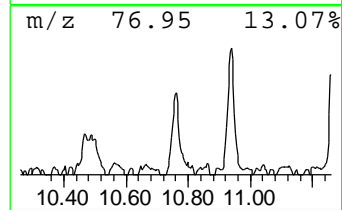
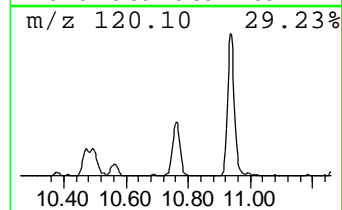
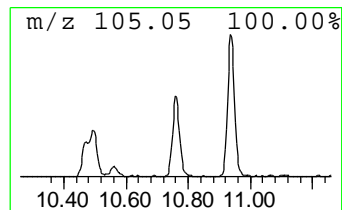
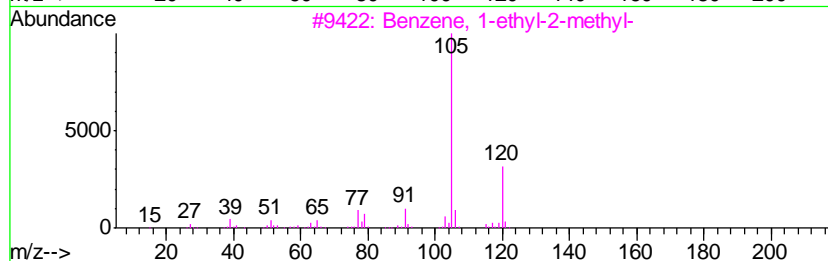
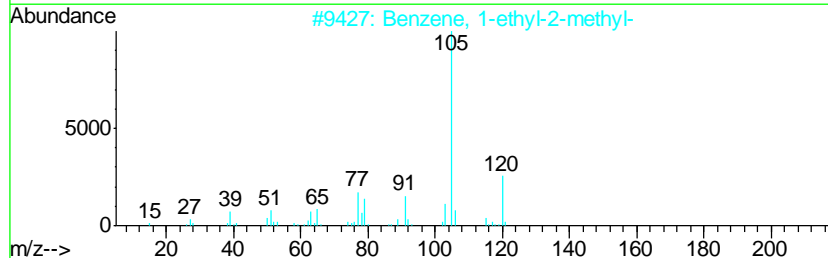
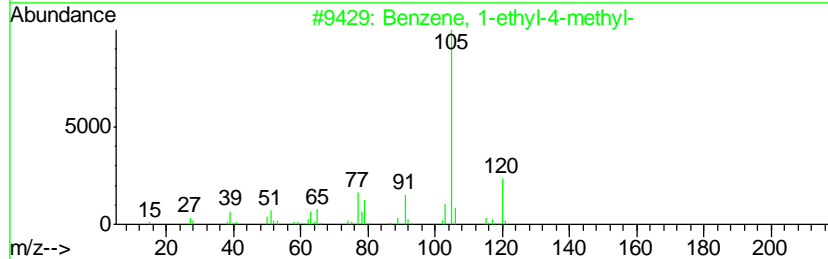
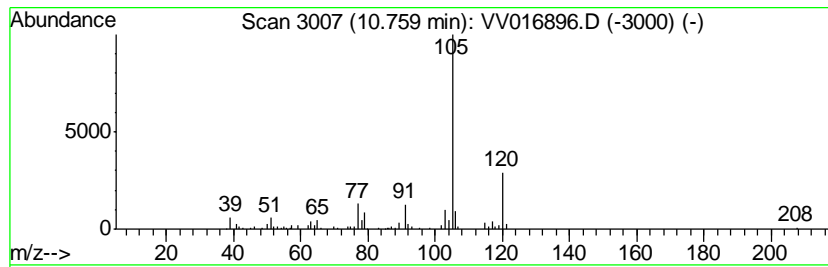
Quant Method : Z:\VOASRV\HPCHEM1\MSVOA_V\METHOD\SOMVLM060820WMA.M
 Quant Title : VOC Analysis

TIC Library : C:\DATABASE\NIST11.L
 TIC Integration Parameters: LSCINT.P

 Peak Number 13 Benzene, 1-ethyl-4-methyl- Concentration Rank 15

R.T.	EstConc	Area	Relative to ISTD	R.T.
10.76	2.63 ug/L	59653	1,4-Dichlorobenzene-d4	11.27

Hit#	of	Tentative ID	MW	MolForm	CAS#	Qual
1	5	Benzene, 1-ethyl-4-methyl-	120	C9H12	000622-96-8	93
2		Benzene, 1-ethyl-2-methyl-	120	C9H12	000611-14-3	93
3		Benzene, 1-ethyl-2-methyl-	120	C9H12	000611-14-3	91
4		Mesitylene	120	C9H12	000108-67-8	91
5		Benzene, 1,2,4-trimethyl-	120	C9H12	000095-63-6	91



Data Path : Z:\VOASRV\HPCHEM1\MSVOA V\DATA\VV061220\
 Data File : VV016896.D
 Acq On : 12 Jun 2020 22:09
 Operator : SY/MD
 Sample : L2914-08 10X
 Misc : 5.0mL/MSVOA V/WATER
 ALS Vial : 26 Sample Multiplier: 1

Instrument :
 MSVOA_V
 ClientSampleID :
 F9E03

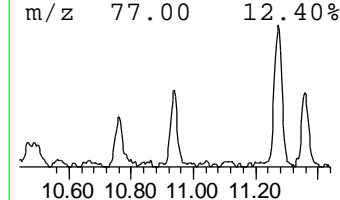
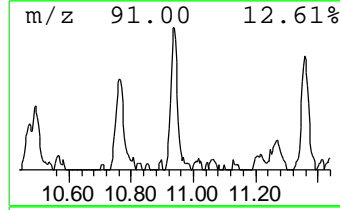
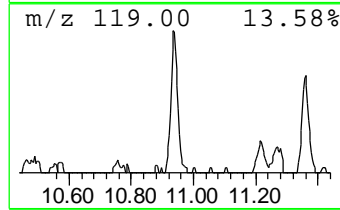
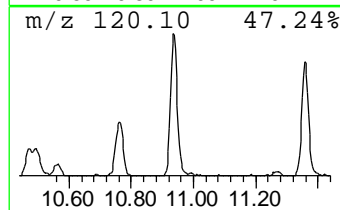
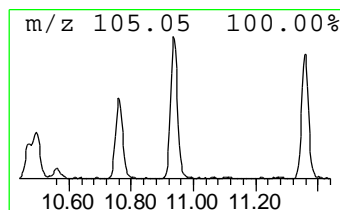
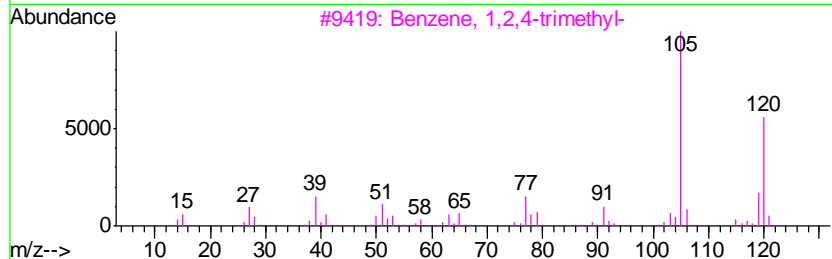
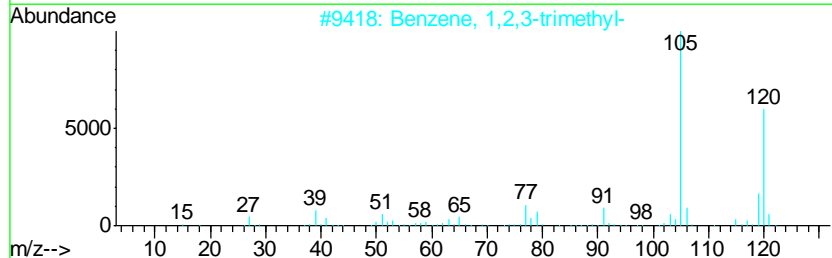
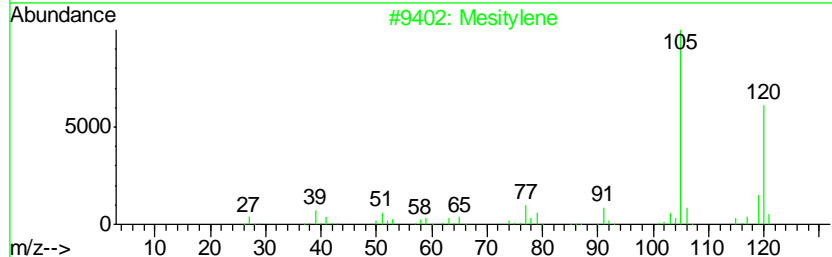
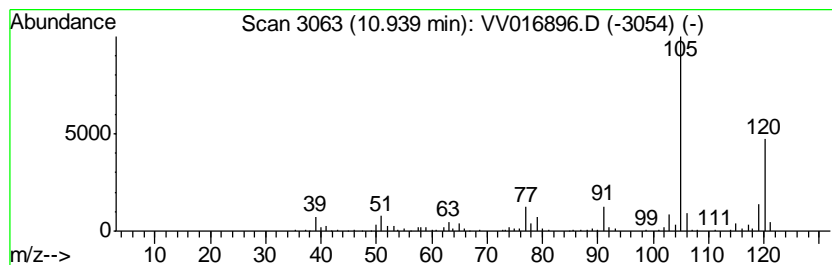
Quant Method : Z:\VOASRV\HPCHEM1\MSVOA_V\METHOD\SOMVLM060820WMA.M
 Quant Title : VOC Analysis

TIC Library : C:\DATABASE\NIST11.L
 TIC Integration Parameters: LSCINT.P

 Peak Number 14 Mesitylene Concentration Rank 8

R.T.	EstConc	Area	Relative to ISTD	R.T.
10.94	4.70 ug/L	106699	1,4-Dichlorobenzene-d4	11.27

Hit#	of	Tentative ID	MW	MolForm	CAS#	Qual
1	5	Mesitylene	120	C9H12	000108-67-8	97
2		Benzene, 1,2,3-trimethyl-	120	C9H12	000526-73-8	97
3		Benzene, 1,2,4-trimethyl-	120	C9H12	000095-63-6	95
4		Mesitylene	120	C9H12	000108-67-8	94
5		Mesitylene	120	C9H12	000108-67-8	94



Data Path : Z:\VOASRV\HPCHEM1\MSVOA V\DATA\VV061220\
 Data File : VV016896.D
 Acq On : 12 Jun 2020 22:09
 Operator : SY/MD
 Sample : L2914-08 10X
 Misc : 5.0mL/MSVOA V/WATER
 ALS Vial : 26 Sample Multiplier: 1

Instrument :
 MSVOA_V
 ClientSampleID :
 F9E03

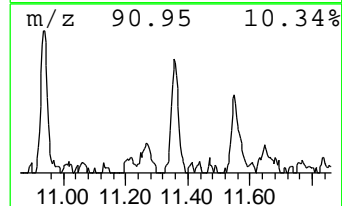
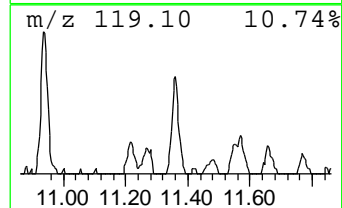
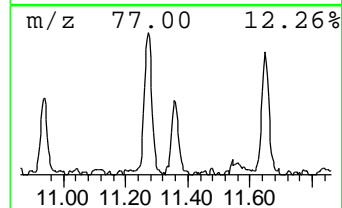
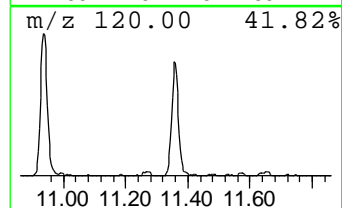
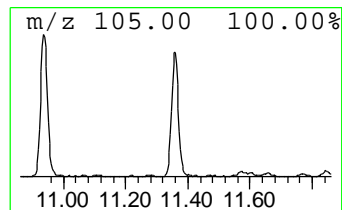
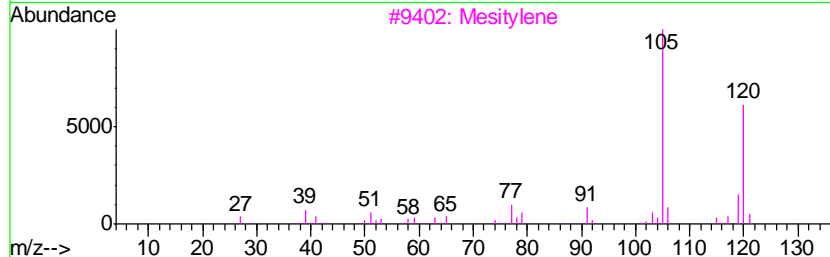
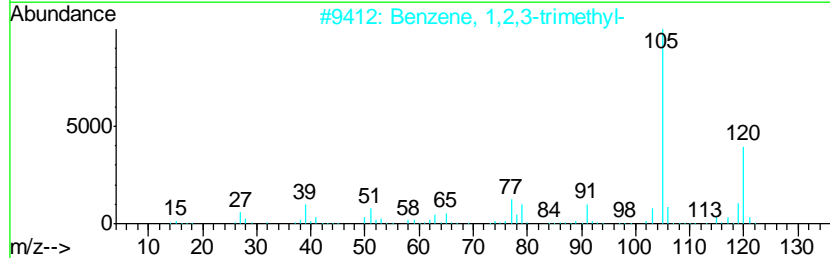
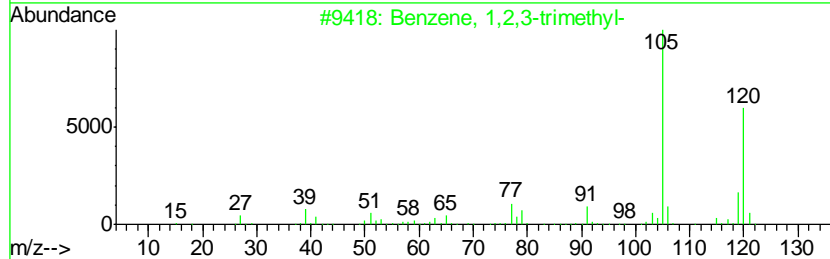
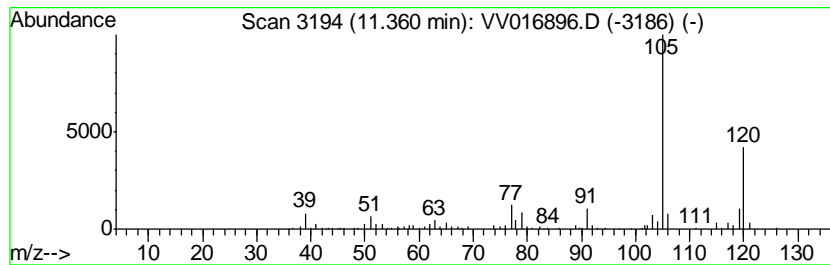
Quant Method : Z:\VOASRV\HPCHEM1\MSVOA_V\METHOD\SOMVLM060820WMA.M
 Quant Title : VOC Analysis

TIC Library : C:\DATABASE\NIST11.L
 TIC Integration Parameters: LSCINT.P

 Peak Number 15 Benzene, 1,2,3-trimethyl- Concentration Rank 9

R.T.	EstConc	Area	Relative to ISTD	R.T.
11.36	4.03 ug/L	91519	1,4-Dichlorobenzene-d4	11.27

Hit#	of	Tentative ID	MW	MolForm	CAS#	Qual
1	5	Benzene, 1,2,3-trimethyl-	120	C9H12	000526-73-8	94
2		Benzene, 1,2,3-trimethyl-	120	C9H12	000526-73-8	94
3		Mesitylene	120	C9H12	000108-67-8	93
4		Benzene, 1,2,4-trimethyl-	120	C9H12	000095-63-6	93
5		Benzene, 1,2,3-trimethyl-	120	C9H12	000526-73-8	91



Data Path : Z:\VOASRV\HPCHEM1\MSVOA V\DATA\VV061220\
 Data File : VV016896.D
 Acq On : 12 Jun 2020 22:09
 Operator : SY/MD
 Sample : L2914-08 10X
 Misc : 5.0mL/MSVOA V/WATER
 ALS Vial : 26 Sample Multiplier: 1

Instrument :
 MSVOA_V
 ClientSampled :
 F9E03

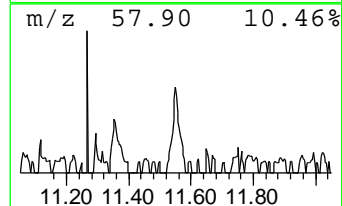
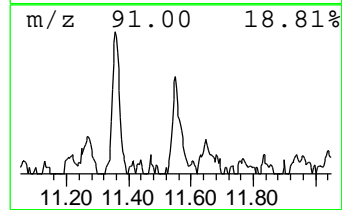
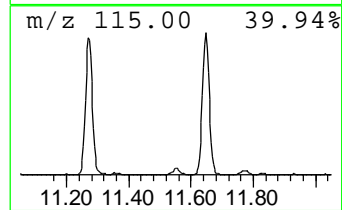
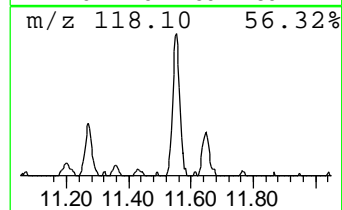
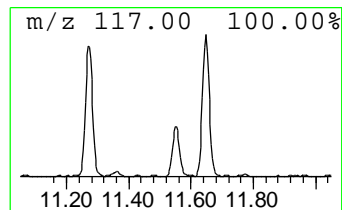
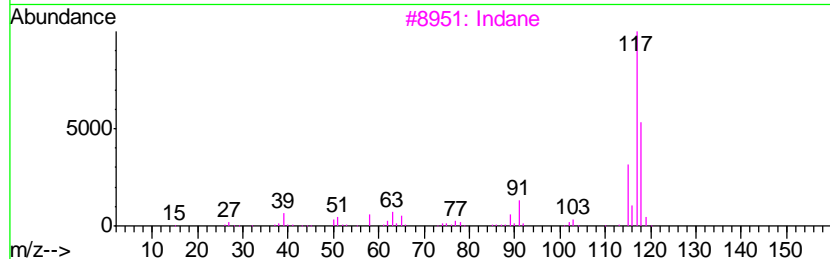
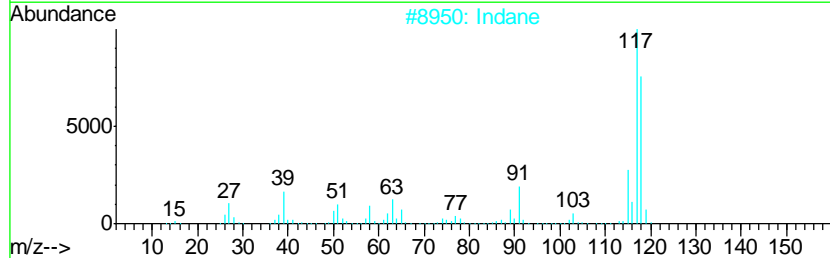
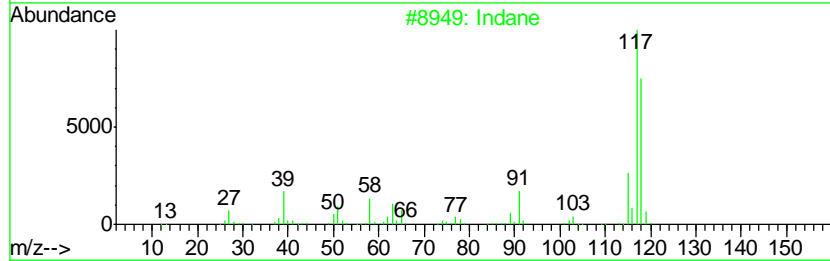
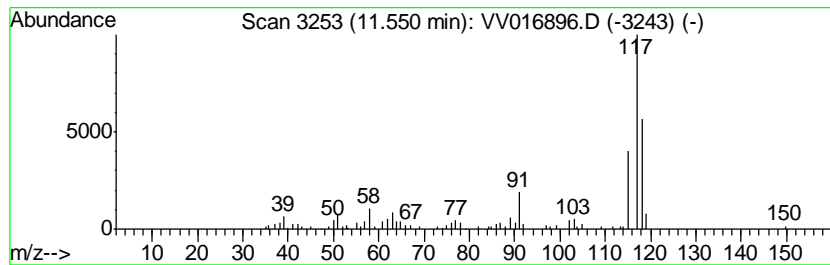
Quant Method : Z:\VOASRV\HPCHEM1\MSVOA_V\METHOD\SOMVLM060820WMA.M
 Quant Title : VOC Analysis

TIC Library : C:\DATABASE\NIST11.L
 TIC Integration Parameters: LSCINT.P

 Peak Number 16 Indane Concentration Rank 14

R.T.	EstConc	Area	Relative to ISTD	R.T.
11.55	2.67 ug/L	60489	1,4-Dichlorobenzene-d4	11.27

Hit#	of	Tentative ID	MW	MolForm	CAS#	Qual
1	5	Indane	118	C9H10	000496-11-7	93
2		Indane	118	C9H10	000496-11-7	92
3		Indane	118	C9H10	000496-11-7	76
4		Indane	118	C9H10	000496-11-7	76
5		Benzene, 1-ethenyl-2-methyl-	118	C9H10	000611-15-4	70



Data Path : Z:\VOASRV\HPCHEM1\MSVOA_V\DATA\VV061220\
 Data File : VV016896.D
 Acq On : 12 Jun 2020 22:09
 Operator : SY/MD
 Sample : L2914-08 10X
 Misc : 5.0mL/MSVOA_V/WATER
 ALS Vial : 26 Sample Multiplier: 1

Instrument :
 MSVOA_V
 ClientSampleId :
 F9E03

Quant Method : Z:\VOASRV\HPCHEM1\MSVOA_V\METHOD\SOMVLM060820WMA.M
 Quant Title : VOC Analysis

TIC Library : C:\DATABASE\NIST11.L
 TIC Integration Parameters: LSCINT.P

TIC Top Hit name	RT	EstConc	Units	Response	--Internal Standard--			
					#	RT	Resp	Conc
(DEL) Alkane: Str...	1.36	5.1	ug/L	89285	1	5.64	871606	50.0
(DEL) Alkane: Str...	1.42	3.6	ug/L	63263	1	5.64	871606	50.0
(DEL) Alkane: Str...	1.61	5.2	ug/L	90371	1	5.64	871606	50.0
(DEL) Alkane: Cyc...	1.76	3.4	ug/L	59684	1	5.64	871606	50.0
(DEL) Alkane: Str...	1.80	5.1	ug/L	89472	1	5.64	871606	50.0
(DEL) Alkane: Str...	1.90	5.4	ug/L	94032	1	5.64	871606	50.0
(DEL) Alkane: Str...	1.98	3.2	ug/L	55032	1	5.64	871606	50.0
(DEL) Alkane: Cyc...	2.58	6.6	ug/L	115655	1	5.64	871606	50.0
(DEL) Alkane: Cyc...	3.78	4.9	ug/L	85331	1	5.64	871606	50.0
Thiophene, 2-methyl-	7.54	2.6	ug/L	54119	2	8.87	1055050	50.0
Benzene, 1-ethyl-...	10.76	2.6	ug/L	59653	3	11.27	1134800	50.0
Mesitylene	10.94	4.7	ug/L	106699	3	11.27	1134800	50.0
Benzene, 1,2,3-tr...	11.36	4.0	ug/L	91519	3	11.27	1134800	50.0
Indane	11.55	2.7	ug/L	60489	3	11.27	1134800	50.0