

Data Path : Z:\voasrv\HPCHEM1\MSVOA_V\Data\VW061222\
 Data File : VW026182.D
 Acq On : 12 Jun 2022 23:54
 Operator : SY/MD
 Sample : N3278-06 200X
 Misc : 25mL/MSVOA_V/WATER
 ALS Vial : 21 Sample Multiplier: 1

Instrument :
 MSVOA_V
 ClientSampleId :

Quant Time: Jun 13 06:38:26 2022
 Quant Method : Z:\voasrv\HPCHEM1\MSVOA_V\Method\SFAMVTR061222WMA.M
 Quant Title : TRACE VOA SFAM1.0
 QLast Update : Mon Jun 13 02:52:24 2022
 Response via : Initial Calibration

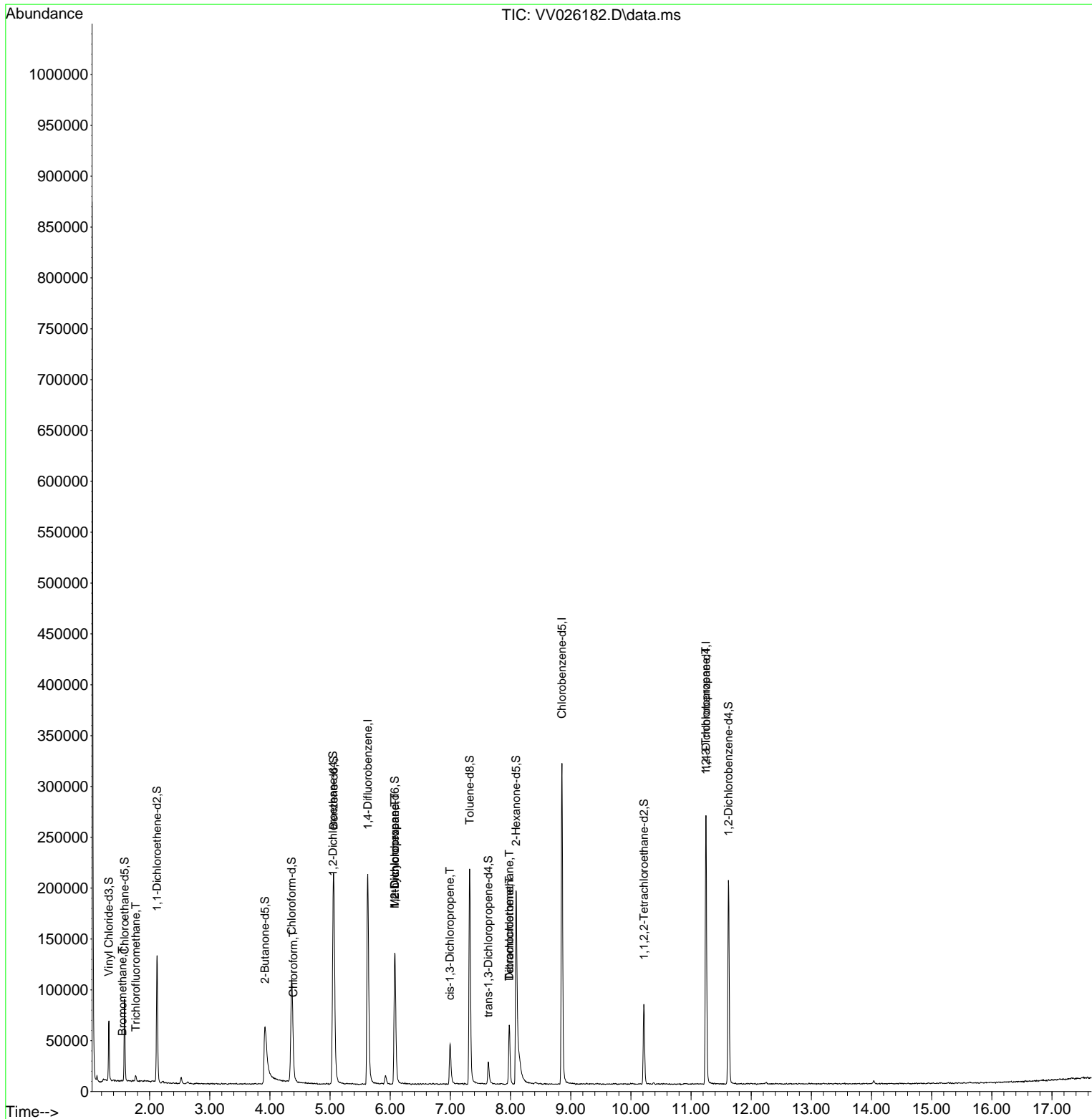
Compound	R.T.	QIon	Response	Conc	Units	Dev(Min)
Internal Standards						
1) 1,4-Difluorobenzene	5.625	114	185515	5.000	ug/L	0.00
28) Chlorobenzene-d5	8.854	117	179866	5.000	ug/L	0.00
58) 1,4-Dichlorobenzene-d4	11.249	152	71800	5.000	ug/L	0.00
System Monitoring Compounds						
4) Vinyl Chloride-d3	1.323	65	37981	1.566	ug/L	0.00
Spiked Amount	5.000	Range 40 - 130	Recovery	=	31.400%#	
7) Chloroethane-d5	1.584	69	49591	2.595	ug/L	0.00
Spiked Amount	5.000	Range 65 - 130	Recovery	=	52.000%#	
11) 1,1-Dichloroethene-d2	2.124	63	65752	1.686	ug/L	0.00
Spiked Amount	5.000	Range 60 - 125	Recovery	=	33.800%#	
20) 2-Butanone-d5	3.915	46	76804	42.435	ug/L	0.00
Spiked Amount	50.000	Range 40 - 130	Recovery	=	84.860%	
24) Chloroform-d	4.362	84	107484	3.124	ug/L	0.00
Spiked Amount	5.000	Range 70 - 125	Recovery	=	62.400%#	
26) 1,2-Dichloroethane-d4	5.047	65	47415	3.418	ug/L	0.00
Spiked Amount	5.000	Range 70 - 130	Recovery	=	68.400%#	
32) Benzene-d6	5.059	84	193758	2.763	ug/L	0.00
Spiked Amount	5.000	Range 70 - 125	Recovery	=	55.200%#	
36) 1,2-Dichloropropane-d6	6.075	67	65798	3.254	ug/L	0.00
Spiked Amount	5.000	Range 60 - 140	Recovery	=	65.000%	
41) Toluene-d8	7.320	98	148409	2.377	ug/L	0.00
Spiked Amount	5.000	Range 70 - 130	Recovery	=	47.600%#	
43) trans-1,3-Dichloroprop...	7.632	79	14623	2.396	ug/L	0.00
Spiked Amount	5.000	Range 55 - 130	Recovery	=	48.000%#	
46) 2-Hexanone-d5	8.091	63	75392	39.673	ug/L	0.00
Spiked Amount	50.000	Range 45 - 130	Recovery	=	79.340%	
56) 1,1,2,2-Tetrachloroeth...	10.217	84	40571	3.368	ug/L	0.00
Spiked Amount	5.000	Range 65 - 120	Recovery	=	67.400%	
66) 1,2-Dichlorobenzene-d4	11.622	152	53454	3.321	ug/L	0.00
Spiked Amount	5.000	Range 80 - 120	Recovery	=	66.400%#	
Target Compounds						
6) Bromomethane	1.548	94	466	0.041	ug/L	94
9) Trichlorofluoromethane	1.770	101	3260	0.125	ug/L	98
25) Chloroform	4.387	83	3349	0.123	ug/L	91
35) Methylcyclohexane	6.075	83	16054	0.808	ug/L #	20
37) 1,2-Dichloropropane	6.075	63	6812	0.483	ug/L #	85
39) cis-1,3-Dichloropropene	6.992	75	1031	0.066	ug/L #	79
47) Tetrachloroethene	7.979	164	13063	1.238	ug/L	98
49) Dibromochloromethane	7.979	129	12908	1.333	ug/L #	13
61) 1,2,3-Trichloropropane	11.246	75	8555	1.553	ug/L #	63

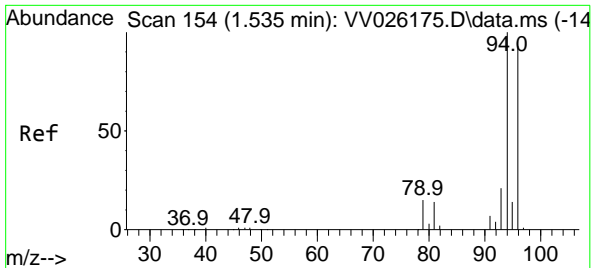
(#) = qualifier out of range (m) = manual integration (+) = signals summed

Data Path : Z:\voasrv\HPCHEM1\MSVOA_V\Data\VV061222\
 Data File : VV026182.D
 Acq On : 12 Jun 2022 23:54
 Operator : SY/MD
 Sample : N3278-06 200X
 Misc : 25mL/MSVOA_V/WATER
 ALS Vial : 21 Sample Multiplier: 1

Instrument :
 MSVOA_V
 ClientSampleId :

Quant Time: Jun 13 06:38:26 2022
 Quant Method : Z:\voasrv\HPCHEM1\MSVOA_V\Method\SFAMVTR061222WMA.M
 Quant Title : TRACE VOA SFAM1.0
 QLast Update : Mon Jun 13 02:52:24 2022
 Response via : Initial Calibration

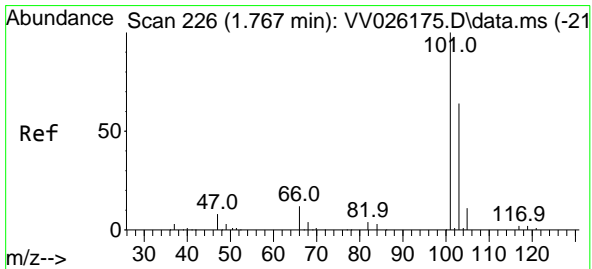
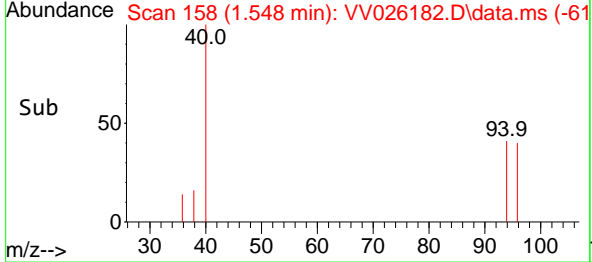
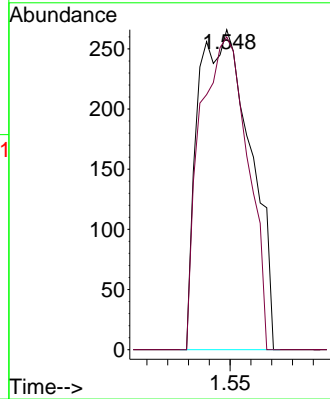
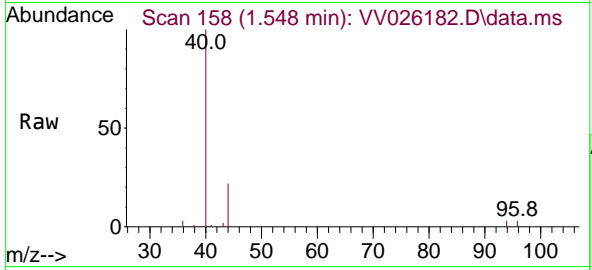




#6
 Bromomethane
 Concen: 0.041 ug/L
 RT: 1.548 min Scan# 11
 Delta R.T. 0.013 min
 Lab File: VV026182.D
 Acq: 12 Jun 2022 23:54

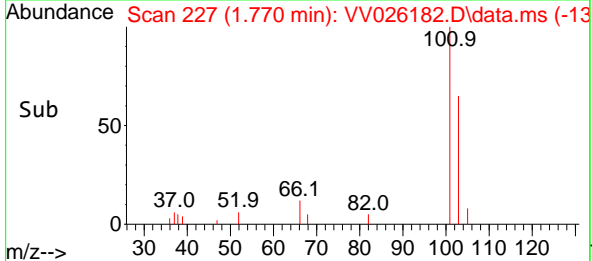
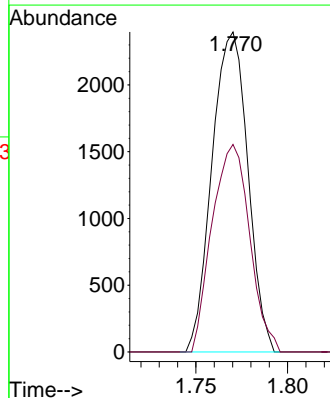
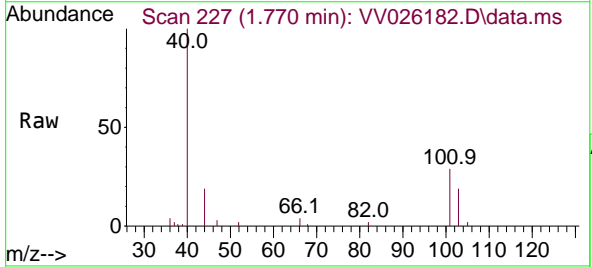
Instrument :
 MSVOA_V
 ClientSampleId :

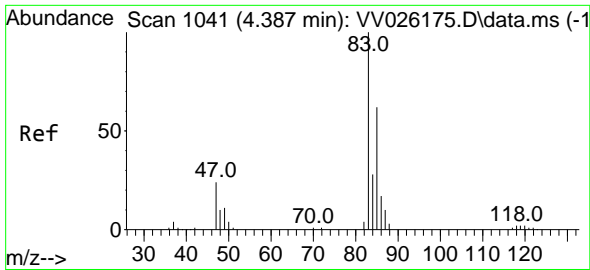
Tgt Ion: 94 Resp: 466
 Ion Ratio Lower Upper
 94 100
 96 97.7 64.5 119.7



#9
 Trichlorofluoromethane
 Concen: 0.125 ug/L
 RT: 1.770 min Scan# 227
 Delta R.T. 0.003 min
 Lab File: VV026182.D
 Acq: 12 Jun 2022 23:54

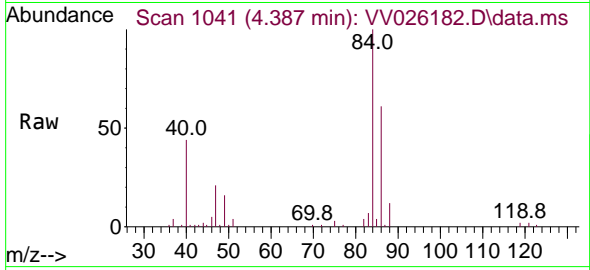
Tgt Ion: 101 Resp: 3260
 Ion Ratio Lower Upper
 101 100
 103 68.0 52.9 79.3



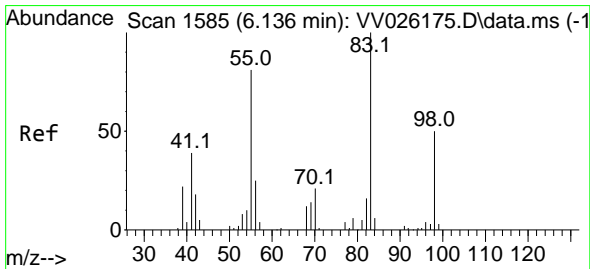
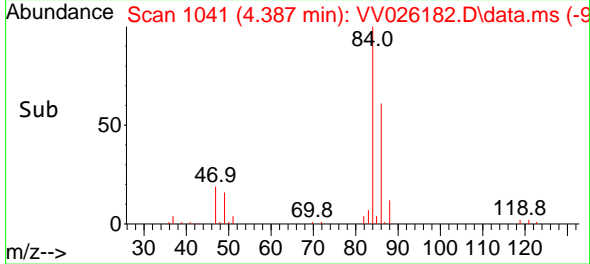
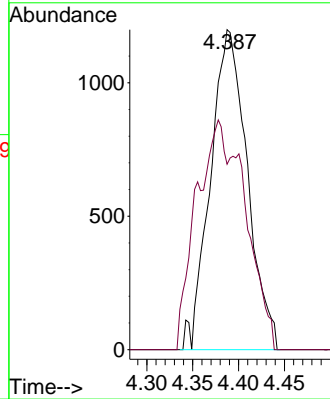


#25
 Chloroform
 Concen: 0.123 ug/L
 RT: 4.387 min Scan# 1041
 Delta R.T. 0.000 min
 Lab File: VV026182.D
 Acq: 12 Jun 2022 23:54

Instrument : MSVOA_V
 ClientSampleId :

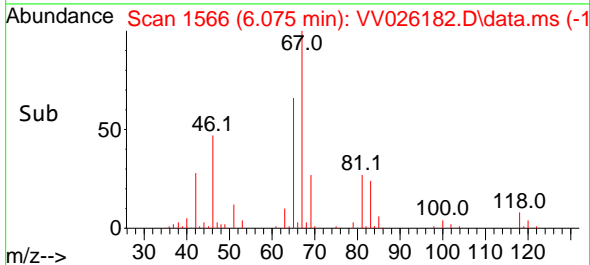
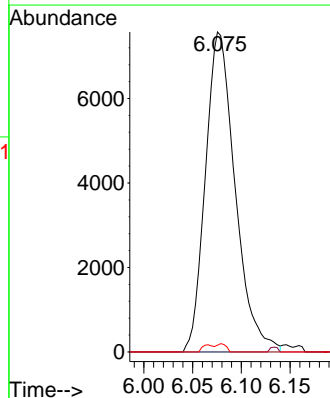
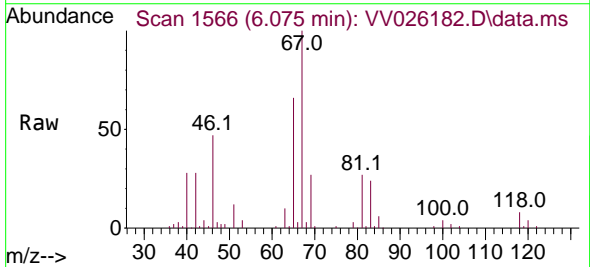


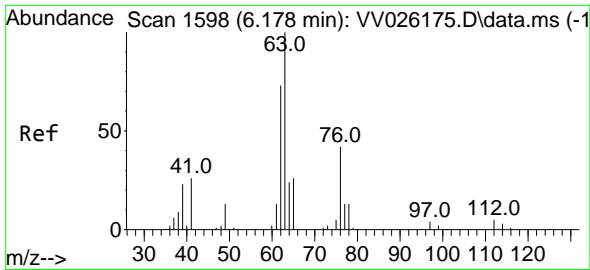
Tgt Ion: 83 Resp: 3349
 Ion Ratio Lower Upper
 83 100
 85 58.0 45.3 84.1



#35
 Methylcyclohexane
 Concen: 0.808 ug/L
 RT: 6.075 min Scan# 1566
 Delta R.T. -0.061 min
 Lab File: VV026182.D
 Acq: 12 Jun 2022 23:54

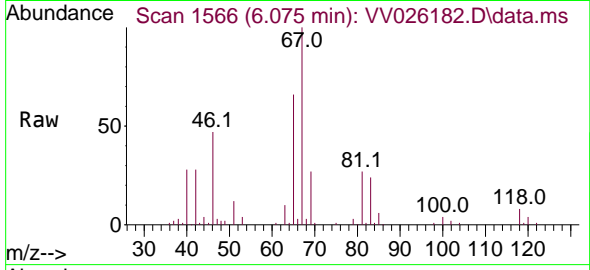
Tgt Ion: 83 Resp: 16054
 Ion Ratio Lower Upper
 83 100
 55 0.4 59.5 89.3#
 98 0.8 38.4 57.6#



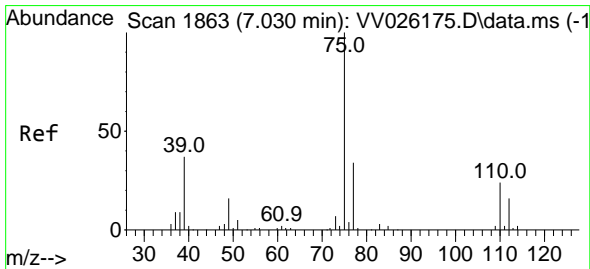
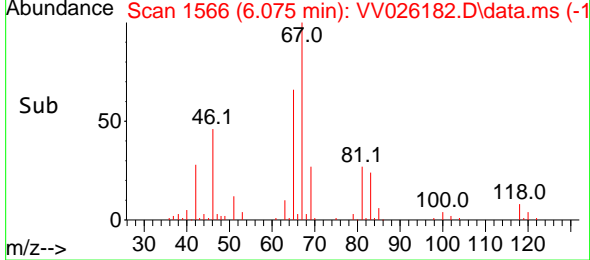
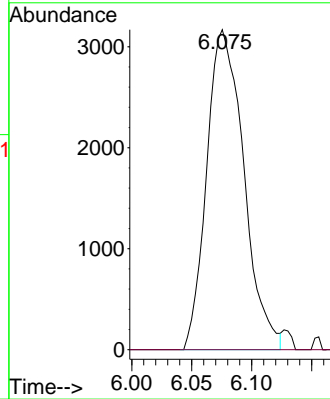


#37
 1,2-Dichloropropane
 Concen: 0.483 ug/L
 RT: 6.075 min Scan# 1111
 Delta R.T. -0.103 min
 Lab File: VV026182.D
 Acq: 12 Jun 2022 23:54

Instrument : MSVOA_V
 ClientSampleId :

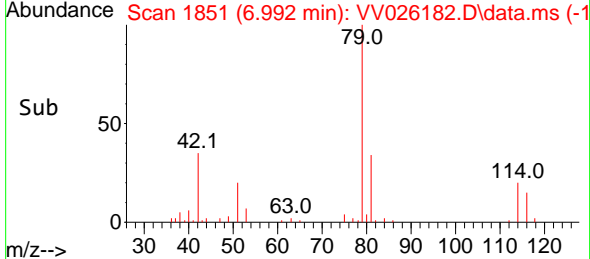
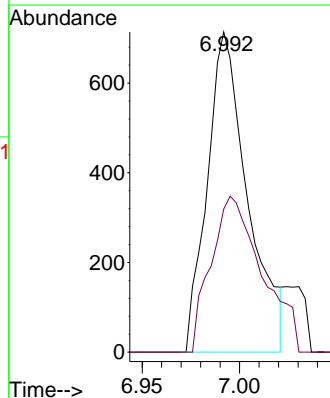
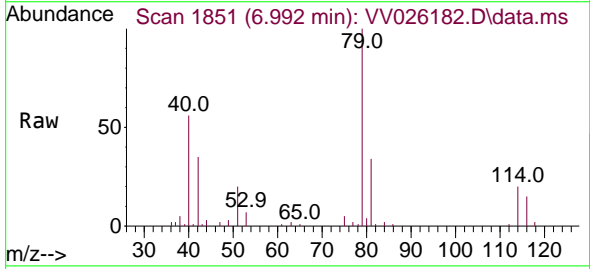


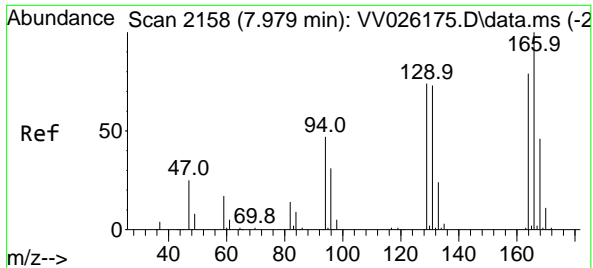
Tgt Ion: 63 Resp: 6812
 Ion Ratio Lower Upper
 63 100
 112 0.0 3.9 5.9#



#39
 cis-1,3-Dichloropropene
 Concen: 0.066 ug/L
 RT: 6.992 min Scan# 1851
 Delta R.T. -0.038 min
 Lab File: VV026182.D
 Acq: 12 Jun 2022 23:54

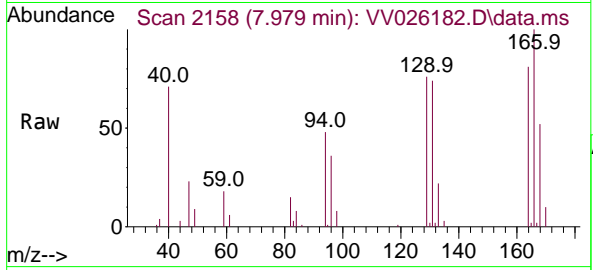
Tgt Ion: 75 Resp: 1031
 Ion Ratio Lower Upper
 75 100
 77 44.7 22.9 42.5#





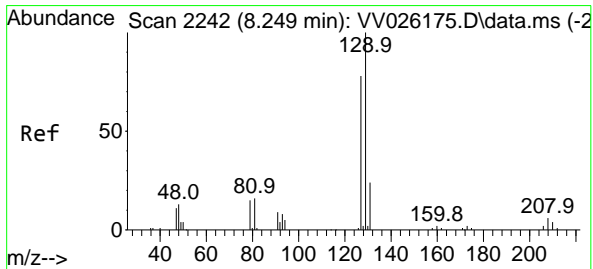
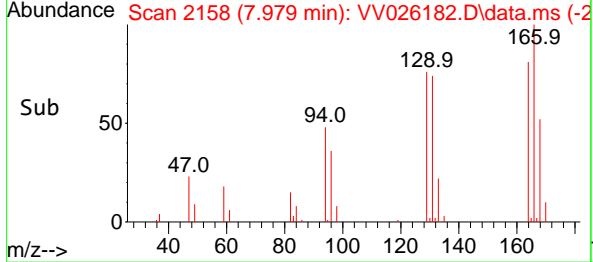
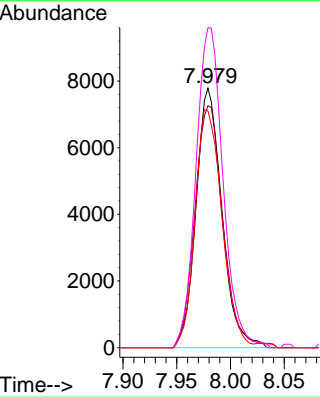
#47
 Tetrachloroethene
 Concen: 1.238 ug/L
 RT: 7.979 min Scan# 2158
 Delta R.T. 0.000 min
 Lab File: VV026182.D
 Acq: 12 Jun 2022 23:54

Instrument : MSVOA_V
 ClientSampleId :



Tgt Ion:164 Resp: 13063

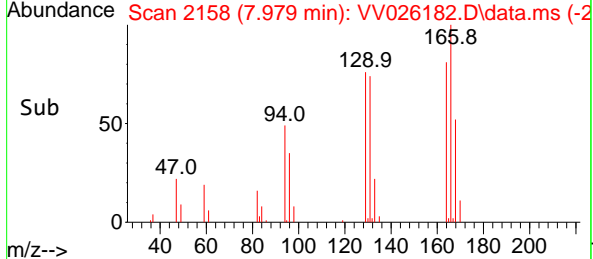
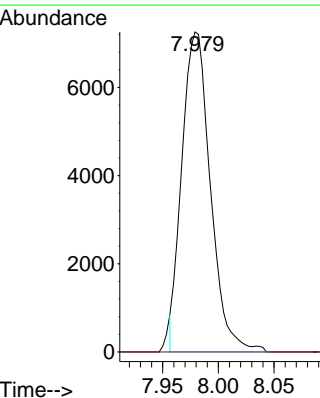
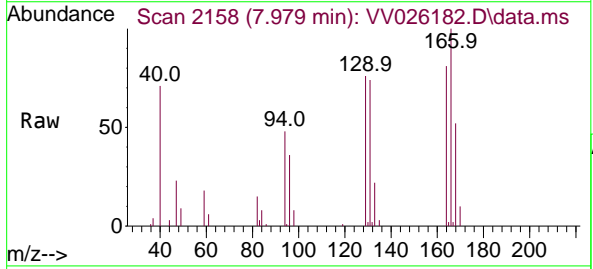
Ion	Ratio	Lower	Upper
164	100		
129	93.3	66.1	122.7
131	91.3	65.0	120.6
166	123.3	88.1	163.7

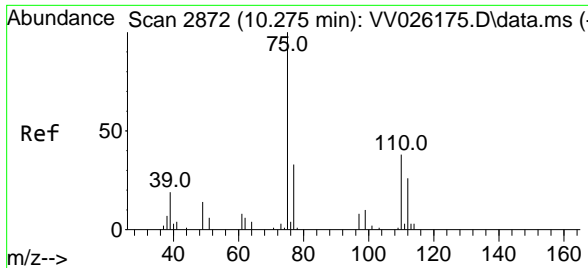


#49
 Dibromochloromethane
 Concen: 1.333 ug/L
 RT: 7.979 min Scan# 2158
 Delta R.T. -0.270 min
 Lab File: VV026182.D
 Acq: 12 Jun 2022 23:54

Tgt Ion:129 Resp: 12908

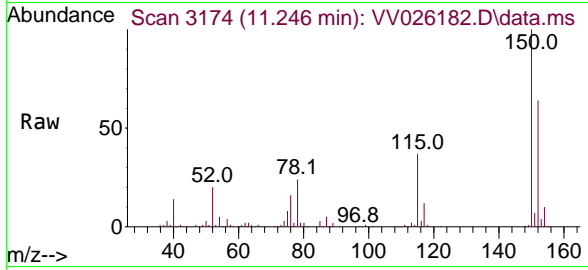
Ion	Ratio	Lower	Upper
129	100		
127	0.0	50.9	94.5#





#61
 1,2,3-Trichloropropane
 Concen: 1.553 ug/L
 RT: 11.246 min Scan# 31
 Delta R.T. 0.971 min
 Lab File: VV026182.D
 Acq: 12 Jun 2022 23:54

Instrument :
 MSVOA_V
 ClientSampleId :



Tgt Ion: 75 Resp: 8555

Ion	Ratio	Lower	Upper
75	100		
77	30.5	27.8	41.8
110	1.8	33.0	49.4#

