

Data File : VV011541.D  
 Acq On : 15 Jun 2019 16:02  
 Operator : SY/MD  
 Sample : K3386-06  
 Misc : 25ML/MSVOA\_V/WATER  
 ALS Vial : 1 Sample Multiplier: 1

Instrument :  
 MSVOA\_V  
 ClientSampled :  
 COM83

Quant Time: Jun 17 04:37:10 2019  
 Quant Method : Z:\VOASRV\HPCHEM1\MSVOA\_V\METHOD\SOMVTR061419WMA.M  
 Quant Title : TRACE VOA SOM01.0  
 QLast Update : Mon Jun 17 04:30:15 2019  
 Response via : Initial Calibration

Internal Standards	R.T.	QIon	Response	Conc	Units	Dev(Min)
1) 1,4-Difluorobenzene	5.66	114	174264	5.00	ug/L	0.00
28) Chlorobenzene-d5	8.89	117	158478	5.00	ug/L	0.00
60) 1,4-Dichlorobenzene-d4	11.30	152	61495	5.00	ug/L	0.00

System Monitoring Compounds

4) Vinyl Chloride-d3	1.31	65	62469	4.75	ug/L	0.00
Spiked Amount	5.000	Range	40 - 130	Recovery	=	95.00%
7) Chloroethane-d5	1.58	69	46743	5.61	ug/L	0.00
Spiked Amount	5.000	Range	65 - 130	Recovery	=	112.20%
11) 1,1-Dichloroethene-d2	2.12	63	93547	3.73	ug/L	0.00
Spiked Amount	5.000	Range	60 - 125	Recovery	=	74.60%
20) 2-Butanone-d5	3.96	46	206711	55.83	ug/L	0.00
Spiked Amount	50.000	Range	40 - 130	Recovery	=	111.66%
24) Chloroform-d	4.40	84	127475	5.04	ug/L	0.00
Spiked Amount	5.000	Range	70 - 125	Recovery	=	100.80%
26) 1,2-Dichloroethane-d4	5.08	65	78685	5.63	ug/L	0.00
Spiked Amount	5.000	Range	70 - 130	Recovery	=	112.60%
32) Benzene-d6	5.09	84	253219	5.35	ug/L	0.00
Spiked Amount	5.000	Range	70 - 125	Recovery	=	107.00%
36) 1,2-Dichloropropane-d6	6.12	67	80291	5.35	ug/L	0.00
Spiked Amount	5.000	Range	60 - 140	Recovery	=	107.00%
41) Toluene-d8	7.36	98	210053	4.98	ug/L	0.00
Spiked Amount	5.000	Range	70 - 130	Recovery	=	99.60%
43) trans-1,3-Dichloropropene-	7.66	79	20645	4.13	ug/L	0.00
Spiked Amount	5.000	Range	55 - 130	Recovery	=	82.60%
46) 2-Hexanone-d5	8.14	63	153613	53.30	ug/L	0.00
Spiked Amount	50.000	Range	45 - 130	Recovery	=	106.60%
57) 1,1,2,2-Tetrachloroethane-	10.26	84	55467	4.93	ug/L	0.00
Spiked Amount	5.000	Range	65 - 120	Recovery	=	98.60%
64) 1,2-Dichlorobenzene-d4	11.67	152	68156	5.55	ug/L	0.00
Spiked Amount	5.000	Range	80 - 120	Recovery	=	111.00%

Target Compounds

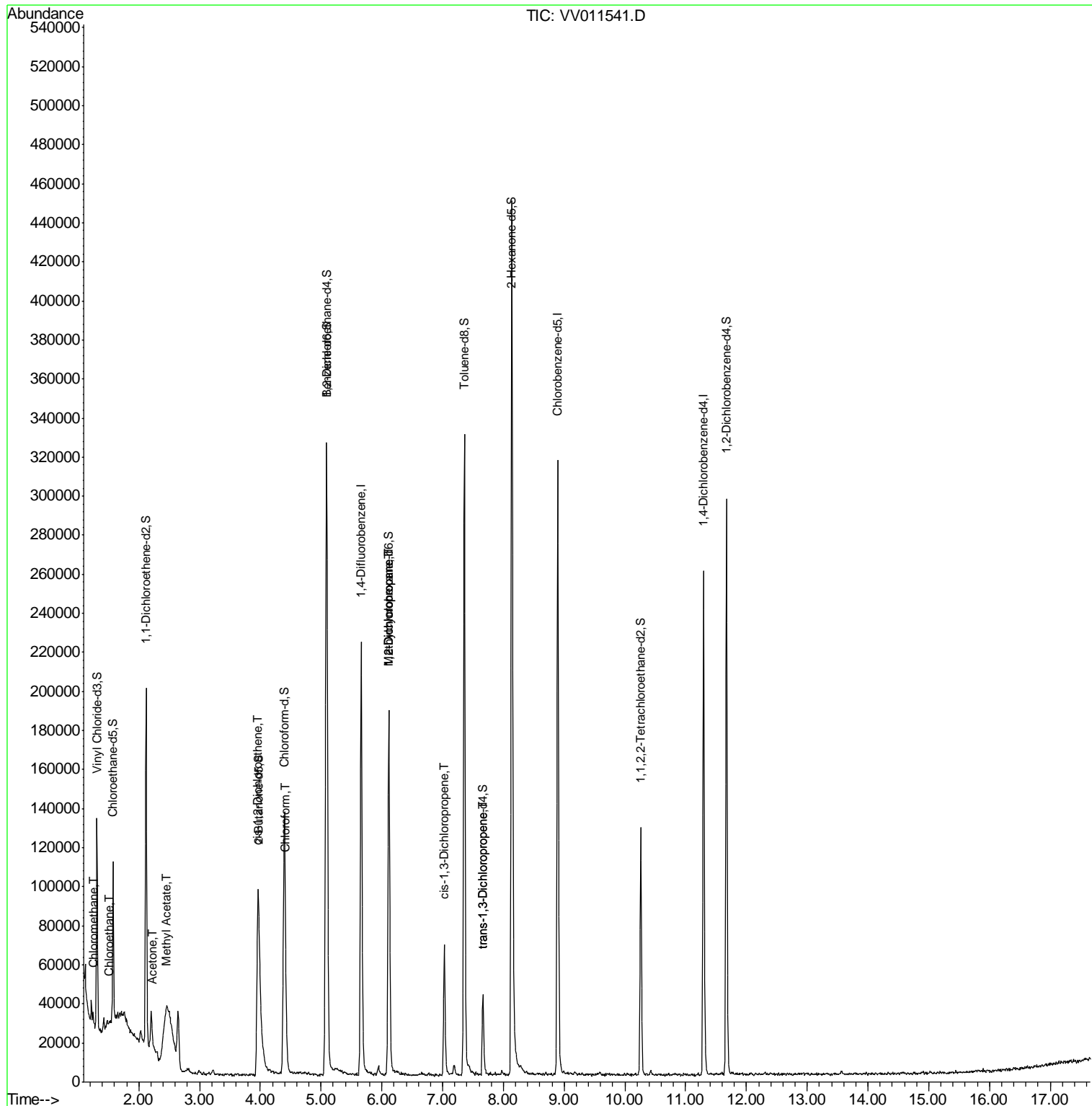
Target Compounds	R.T.	QIon	Response	Conc	Units	Qvalue
3) Chloromethane	1.25	50	3274	0.194	ug/L	94
8) Chloroethane	1.52	64	820	0.102	ug/L #	57
13) Acetone	2.23	43	6316	2.531	ug/L	52
15) Methyl Acetate	2.44	43	11476	1.735	ug/L #	60
22) cis-1,2-Dichloroethene	3.95	96	1598	0.115	ug/L	88
25) Chloroform	4.42	83	12077	0.475	ug/L	96
35) Methylcyclohexane	6.12	83	19772	1.051	ug/L #	16
37) 1,2-Dichloropropane	6.12	63	10277	0.746	ug/L #	87
39) cis-1,3-Dichloropropene	7.03	75	1635	0.094	ug/L #	45
44) trans-1,3-Dichloropropene	7.66	75	1131	0.085	ug/L	93

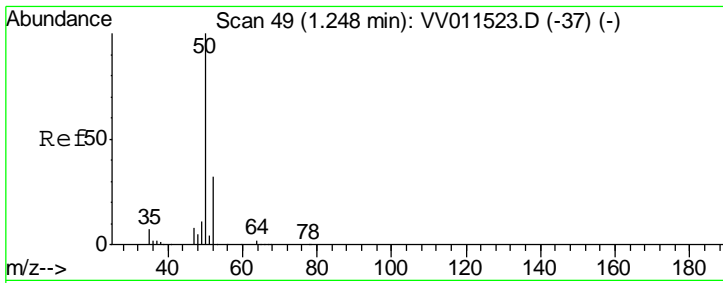
(#) = qualifier out of range (m) = manual integration (+) = signals summed

Data File : VV011541.D  
Acq On : 15 Jun 2019 16:02  
Operator : SY/MD  
Sample : K3386-06  
Misc : 25ML/MSVOA\_V/WATER  
ALS Vial : 1 Sample Multiplier: 1

Instrument :  
MSVOA\_V  
Client Sampled :  
COM83

Quant Time: Jun 17 04:37:10 2019  
Quant Method : Z:\VOASRV\HPCHEM1\MSVOA\_V\METHOD\SOMVTR061419WMA.M  
Quant Title : TRACE VOA SOM01.0  
QLast Update : Mon Jun 17 04:30:15 2019  
Response via : Initial Calibration

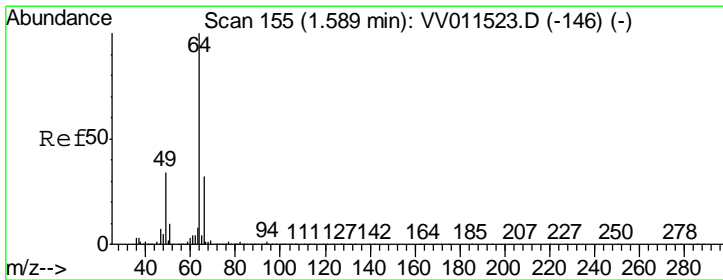
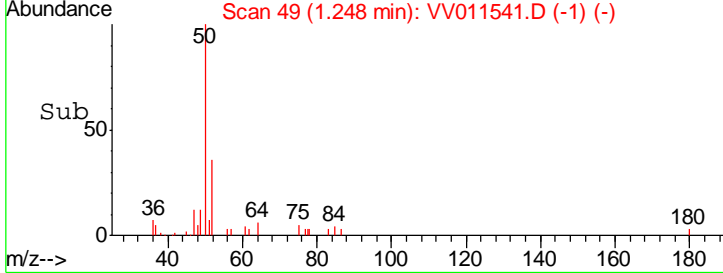
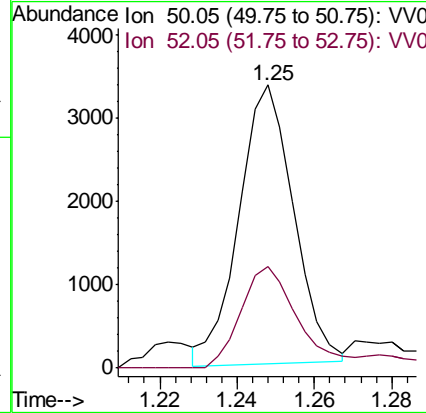
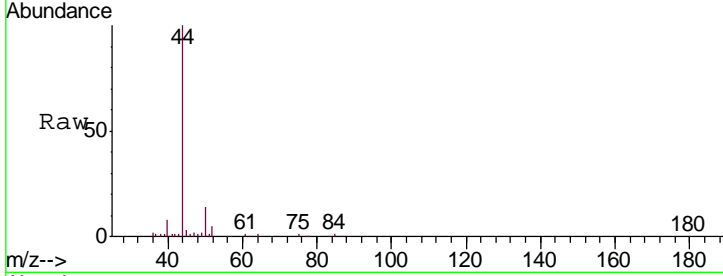




#3  
 Chloromethane  
 Concen: 0.194 ug/L  
 RT: 1.25 min Scan# 49  
 Delta R.T. -0.00 min  
 Lab File: VV011541.D  
 Acq: 15 Jun 2019 16:02

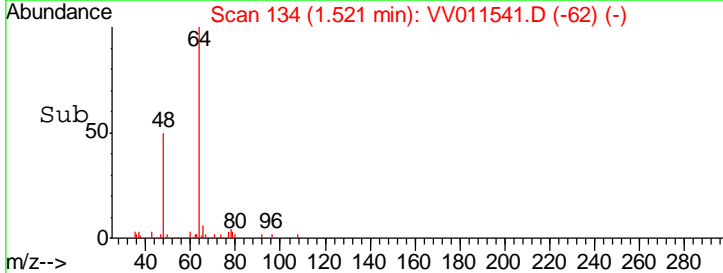
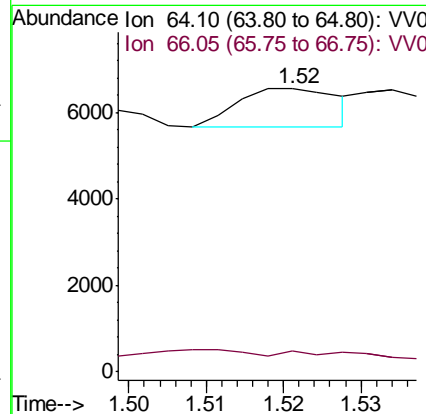
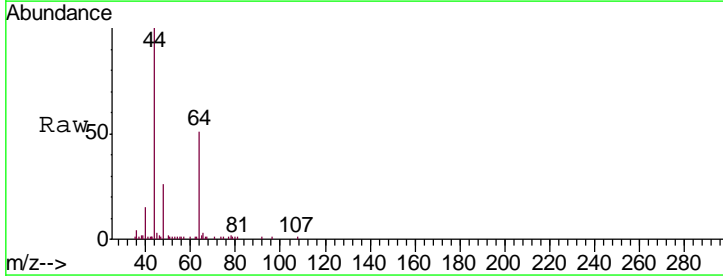
Instrument :  
 MSVOA\_V  
 ClientSampled :  
 COM83

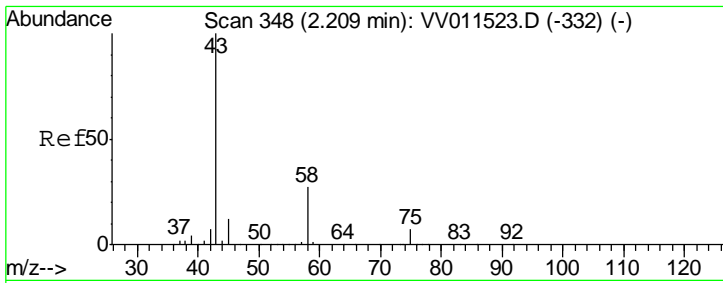
Tgt Ion: 50 Resp: 3274  
 Ion Ratio Lower Upper  
 50 100  
 52 36.0 22.7 42.1



#8  
 Chloroethane  
 Concen: 0.102 ug/L  
 RT: 1.52 min Scan# 134  
 Delta R.T. -0.07 min  
 Lab File: VV011541.D  
 Acq: 15 Jun 2019 16:02

Tgt Ion: 64 Resp: 820  
 Ion Ratio Lower Upper  
 64 100  
 66 7.4 21.6 40.2#

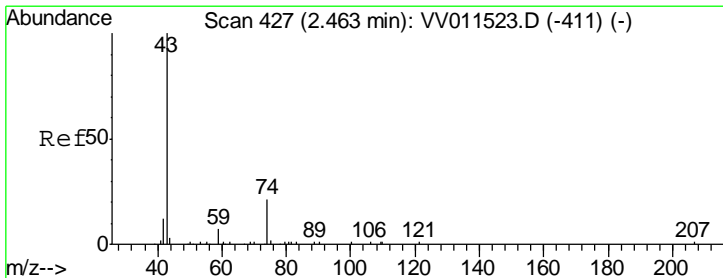
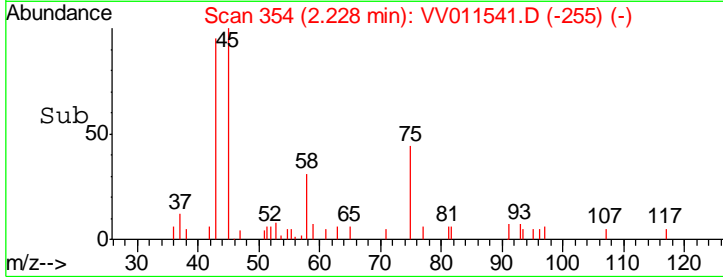
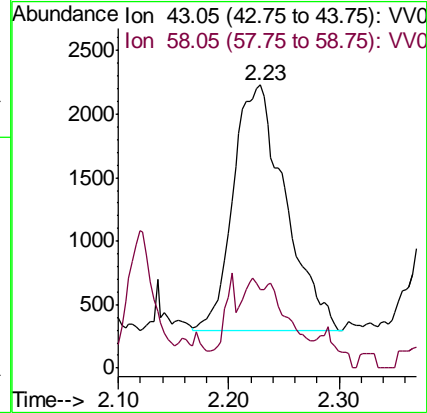
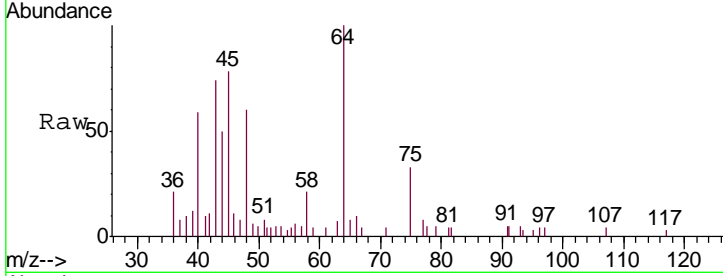




#13  
 Acetone  
 Concen: 2.531 ug/L  
 RT: 2.23 min Scan# 354  
 Delta R.T. 0.02 min  
 Lab File: VV011541.D  
 Acq: 15 Jun 2019 16:02

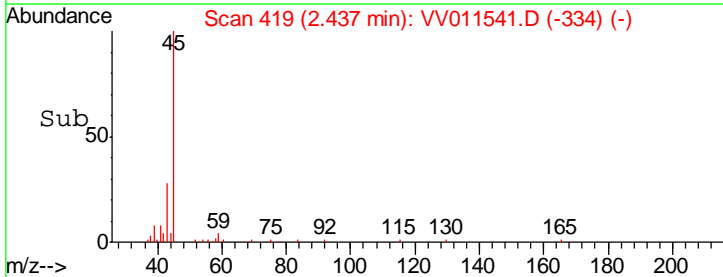
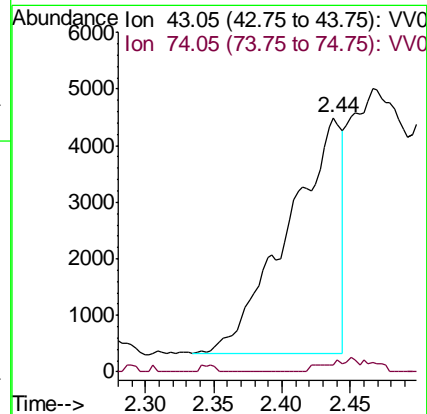
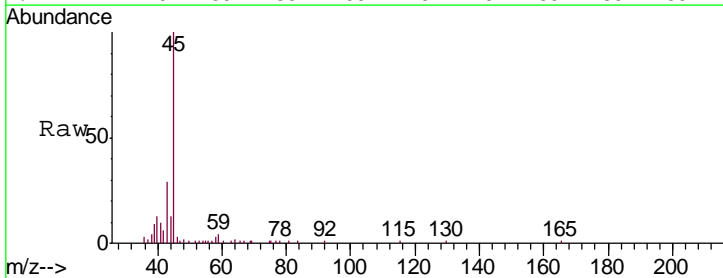
Instrument :  
 MSVOA\_V  
 ClientSampled :  
 COM83

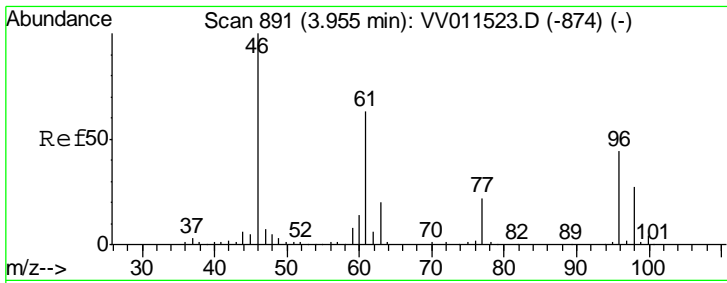
Tgt Ion	Resp	Lower	Upper
43	6316		
58	3.4	0.0	57.8



#15  
 Methyl Acetate  
 Concen: 1.735 ug/L  
 RT: 2.44 min Scan# 419  
 Delta R.T. -0.03 min  
 Lab File: VV011541.D  
 Acq: 15 Jun 2019 16:02

Tgt Ion	Resp	Lower	Upper
43	11476		
74	2.1	16.5	24.7#

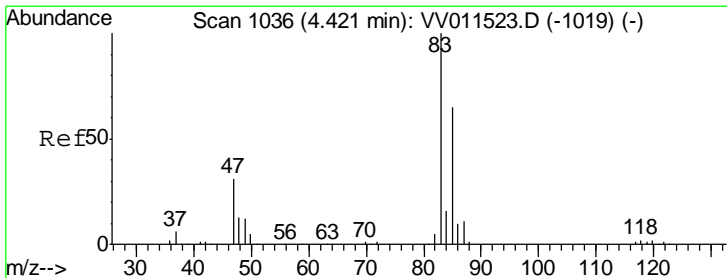
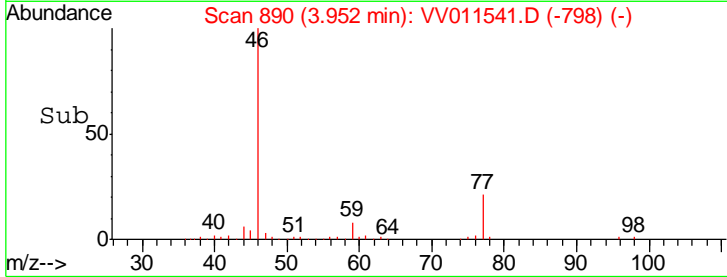
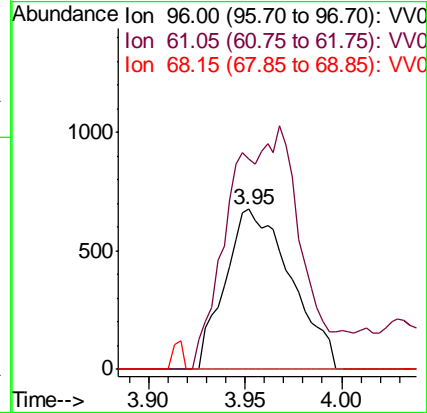
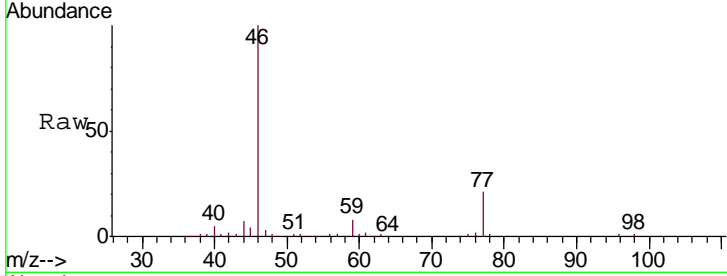




#22  
 cis-1,2-Dichloroethene  
 Concen: 0.115 ug/L  
 RT: 3.95 min Scan# 890  
 Delta R.T. -0.00 min  
 Lab File: VV011541.D  
 Acq: 15 Jun 2019 16:02

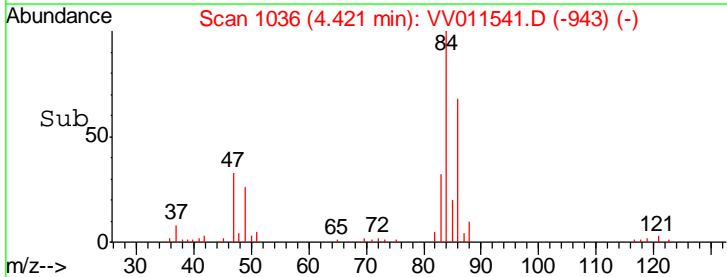
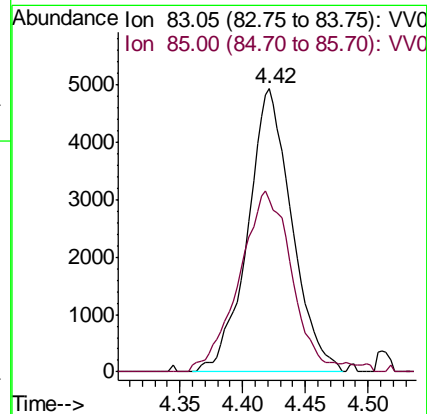
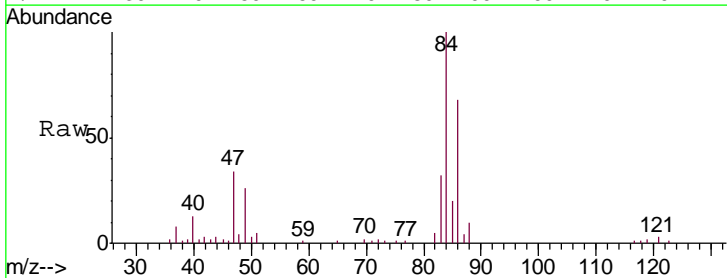
Instrument :  
 MSVOA\_V  
 ClientSampled :  
 COM83

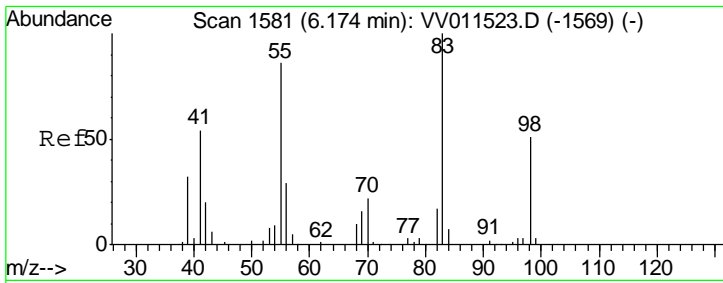
Tgt Ion	Resp	Lower	Upper
96	1598		
61	131.2	102.2	189.8
68	0.0	0.0	0.0



#25  
 Chloroform  
 Concen: 0.475 ug/L  
 RT: 4.42 min Scan# 1036  
 Delta R.T. -0.00 min  
 Lab File: VV011541.D  
 Acq: 15 Jun 2019 16:02

Tgt Ion	Resp	Lower	Upper
83	12077		
85	60.9	44.6	82.8

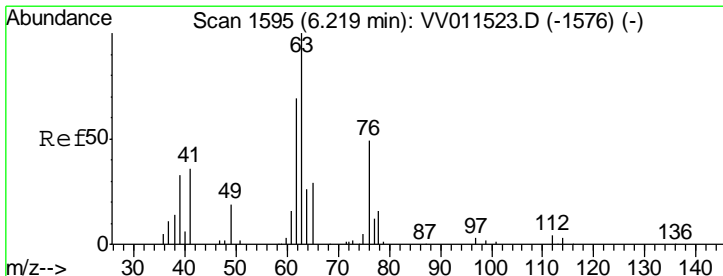
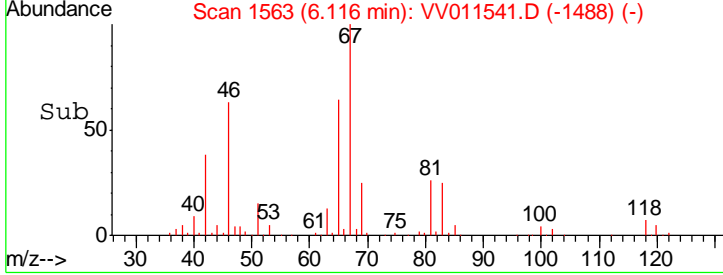
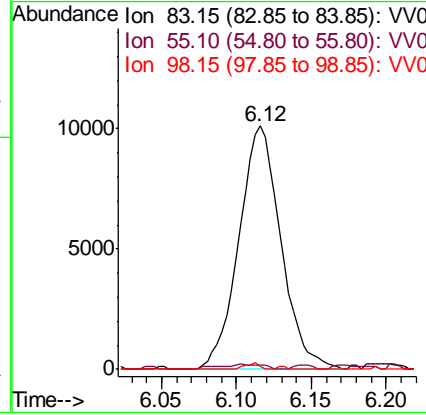
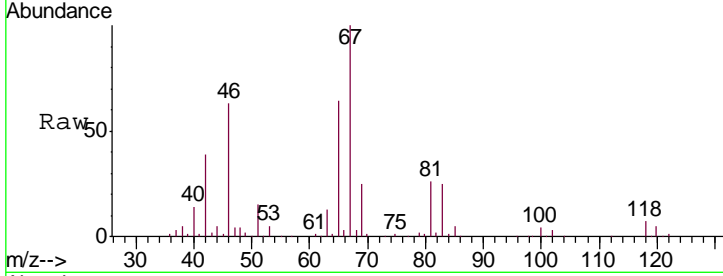




#35  
 Methylcyclohexane  
 Concen: 1.051 ug/L  
 RT: 6.12 min Scan# 1563  
 Delta R.T. -0.06 min  
 Lab File: VV011541.D  
 Acq: 15 Jun 2019 16:02

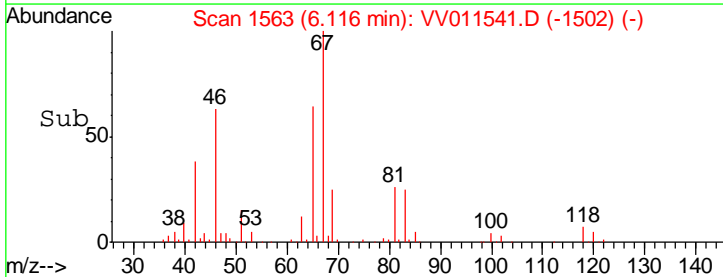
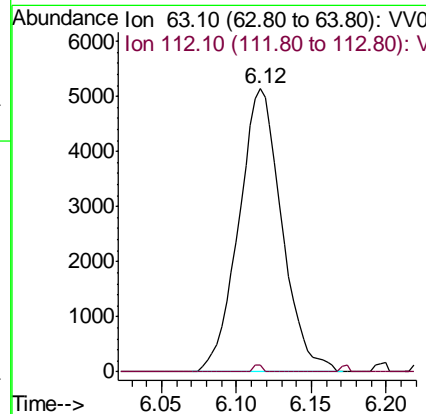
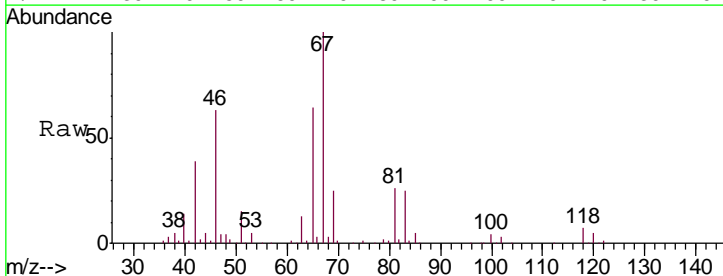
Instrument : MSVOA\_V  
 ClientSampled : COM83

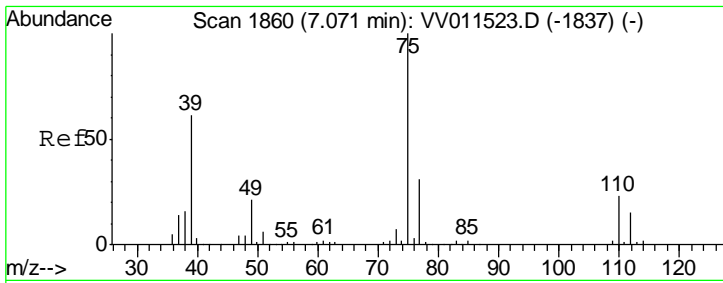
Tgt Ion	Resp	Lower	Upper
83	19772		
55	1.5	67.9	101.9#
98	0.9	39.6	59.4#



#37  
 1,2-Dichloropropane  
 Concen: 0.746 ug/L  
 RT: 6.12 min Scan# 1563  
 Delta R.T. -0.10 min  
 Lab File: VV011541.D  
 Acq: 15 Jun 2019 16:02

Tgt Ion	Resp	Lower	Upper
63	10277		
112	0.4	3.7	5.5#

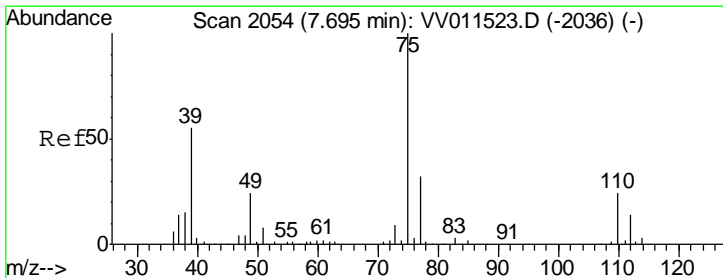
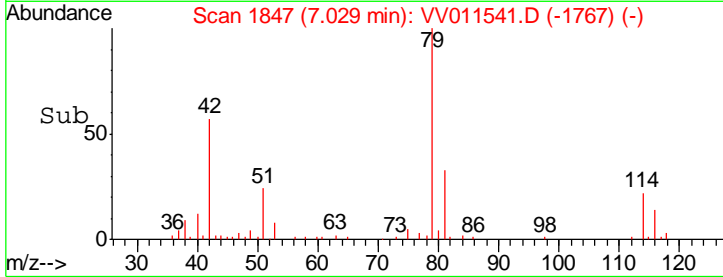
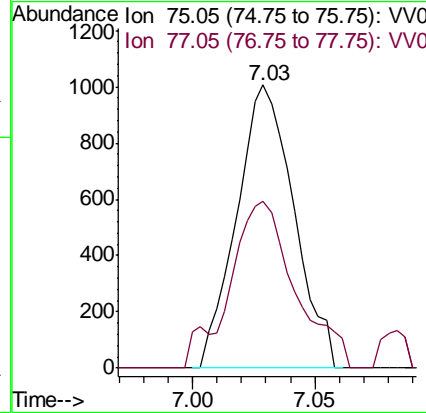
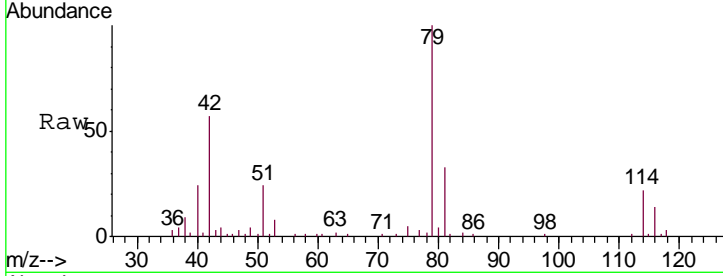




#39  
 cis-1,3-Dichloropropene  
 Concen: 0.094 ug/L  
 RT: 7.03 min Scan# 1847  
 Delta R.T. -0.04 min  
 Lab File: VV011541.D  
 Acq: 15 Jun 2019 16:02

Instrument :  
 MSVOA\_V  
 ClientSampled :  
 COM83

Tgt Ion: 75 Resp: 1635  
 Ion Ratio Lower Upper  
 75 100  
 77 59.0 20.6 38.4#



#44  
 trans-1,3-Dichloropropene  
 Concen: 0.085 ug/L  
 RT: 7.66 min Scan# 2043  
 Delta R.T. -0.04 min  
 Lab File: VV011541.D  
 Acq: 15 Jun 2019 16:02

Tgt Ion: 75 Resp: 1131  
 Ion Ratio Lower Upper  
 75 100  
 77 36.7 22.8 42.4

