

Data Path : Z:\voasrv\HPCHEM1\MSVOA_V\Data\VW061422\
 Data File : VW026260.D
 Acq On : 15 Jun 2022 01:47
 Operator : SY/MD
 Sample : N3275-12 200X
 Misc : 25mL/MSVOA_V/WATER
 ALS Vial : 48 Sample Multiplier: 1

Instrument :
 MSVOA_V
 ClientSampleId :
 C0BE4

Quant Time: Jun 15 09:41:21 2022
 Quant Method : Z:\voasrv\HPCHEM1\MSVOA_V\Method\SFAMVTR061222WMA.M
 Quant Title : TRACE VOA SFAM1.0
 QLast Update : Wed Jun 15 07:11:20 2022
 Response via : Initial Calibration

Compound	R.T.	QIon	Response	Conc	Units	Dev(Min)

Internal Standards						
1) 1,4-Difluorobenzene	5.622	114	167730	5.000	ug/L	0.00
28) Chlorobenzene-d5	8.854	117	163094	5.000	ug/L	0.00
58) 1,4-Dichlorobenzene-d4	11.249	152	66768	5.000	ug/L	0.00
System Monitoring Compounds						
4) Vinyl Chloride-d3	1.314	65	82606	3.766	ug/L	0.00
Spiked Amount	5.000	Range 40 - 130	Recovery	=	75.400%	
7) Chloroethane-d5	1.574	69	74360	4.304	ug/L	0.00
Spiked Amount	5.000	Range 65 - 130	Recovery	=	86.000%	
11) 1,1-Dichloroethene-d2	2.114	63	113016	3.204	ug/L	0.00
Spiked Amount	5.000	Range 60 - 125	Recovery	=	64.000%	
20) 2-Butanone-d5	3.912	46	113634	69.441	ug/L	0.00
Spiked Amount	50.000	Range 40 - 130	Recovery	=	138.880%#	
24) Chloroform-d	4.355	84	150406	4.835	ug/L	0.00
Spiked Amount	5.000	Range 70 - 125	Recovery	=	96.800%	
26) 1,2-Dichloroethane-d4	5.040	65	67193	5.358	ug/L	0.00
Spiked Amount	5.000	Range 70 - 130	Recovery	=	107.200%	
32) Benzene-d6	5.056	84	293279	4.613	ug/L	0.00
Spiked Amount	5.000	Range 70 - 125	Recovery	=	92.200%	
36) 1,2-Dichloropropane-d6	6.072	67	90743	4.949	ug/L	0.00
Spiked Amount	5.000	Range 60 - 140	Recovery	=	99.000%	
41) Toluene-d8	7.317	98	228661	4.039	ug/L	0.00
Spiked Amount	5.000	Range 70 - 130	Recovery	=	80.800%	
43) trans-1,3-Dichloroprop...	7.625	79	24083	4.352	ug/L	0.00
Spiked Amount	5.000	Range 55 - 130	Recovery	=	87.000%	
46) 2-Hexanone-d5	8.092	63	93208	54.092	ug/L	0.00
Spiked Amount	50.000	Range 45 - 130	Recovery	=	108.180%	
56) 1,1,2,2-Tetrachloroeth...	10.217	84	54662	5.004	ug/L	0.00
Spiked Amount	5.000	Range 65 - 120	Recovery	=	100.000%	
66) 1,2-Dichlorobenzene-d4	11.622	152	78163	5.223	ug/L	0.00
Spiked Amount	5.000	Range 80 - 120	Recovery	=	104.400%	

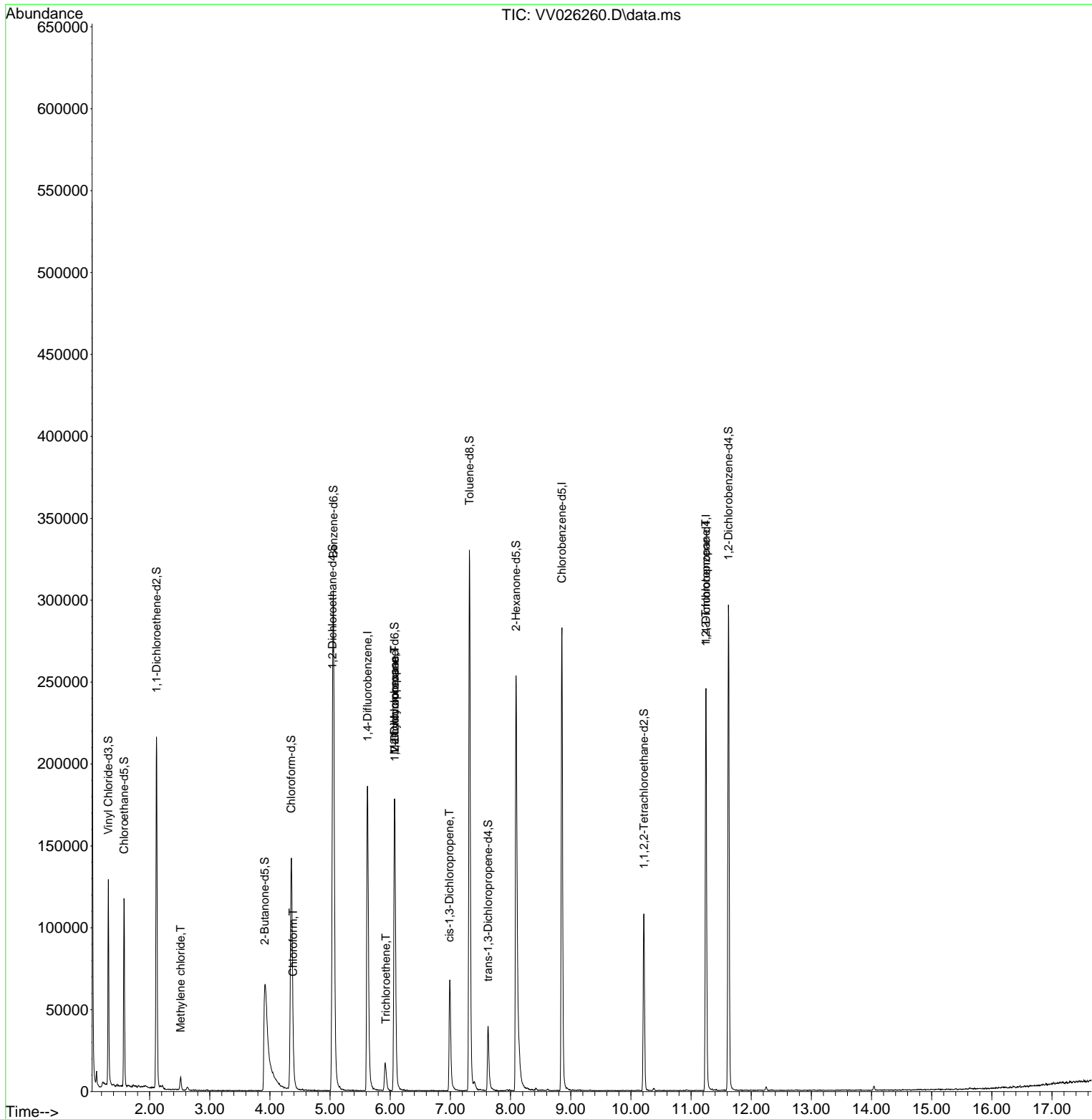
Target Compounds						Qvalue
16) Methylene chloride	2.516	84	3387	0.256	ug/L	82
25) Chloroform	4.384	83	6696	0.271	ug/L	99
34) Trichloroethene	5.928	95	3882	0.291	ug/L	88
35) Methylcyclohexane	6.072	83	22701	1.260	ug/L #	19
37) 1,2-Dichloropropane	6.076	63	9643	0.755	ug/L #	85
39) cis-1,3-Dichloropropene	6.986	75	1911	0.134	ug/L #	50
61) 1,2,3-Trichloropropane	11.246	75	7503	1.465	ug/L #	66

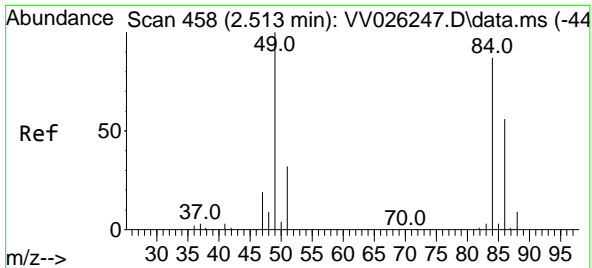
(#) = qualifier out of range (m) = manual integration (+) = signals summed

Data Path : Z:\voasrv\HPCHEM1\MSVOA_V\Data\VV061422\
 Data File : VV026260.D
 Acq On : 15 Jun 2022 01:47
 Operator : SY/MD
 Sample : N3275-12 200X
 Misc : 25mL/MSVOA_V/WATER
 ALS Vial : 48 Sample Multiplier: 1

Instrument :
 MSVOA_V
 ClientSampleId :
 C0BE4

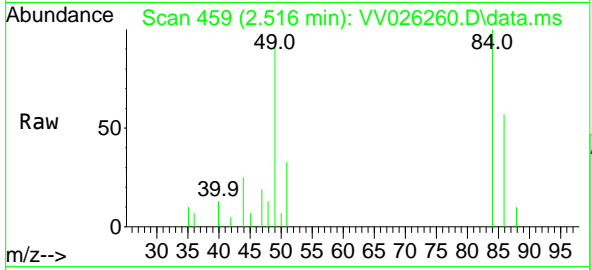
Quant Time: Jun 15 09:41:21 2022
 Quant Method : Z:\voasrv\HPCHEM1\MSVOA_V\Method\SFAMVTR061222WMA.M
 Quant Title : TRACE VOA SFAM1.0
 QLast Update : Wed Jun 15 07:11:20 2022
 Response via : Initial Calibration





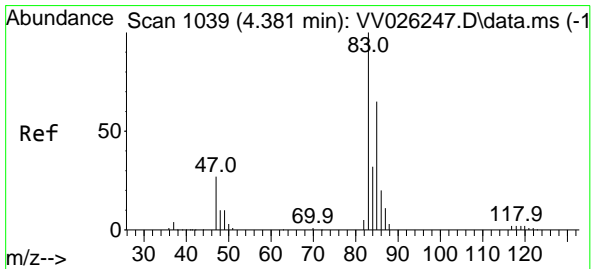
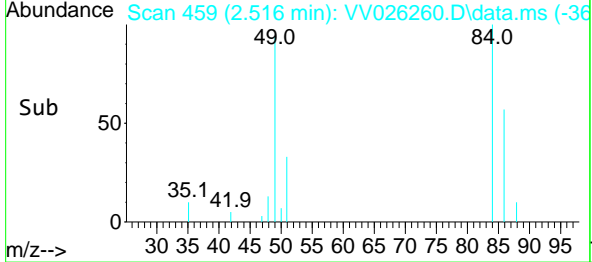
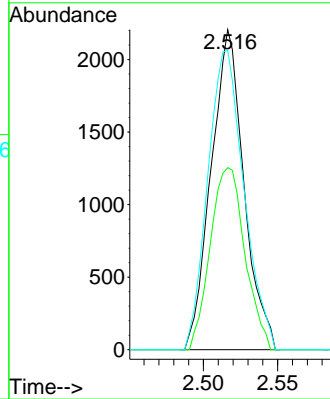
#16
 Methylene chloride
 Concen: 0.256 ug/L
 RT: 2.516 min Scan# 41
 Delta R.T. 0.003 min
 Lab File: VV026260.D
 Acq: 15 Jun 2022 01:47

Instrument :
 MSVOA_V
 ClientSampleId :
 COBE4



Tgt Ion: 84 Resp: 3387

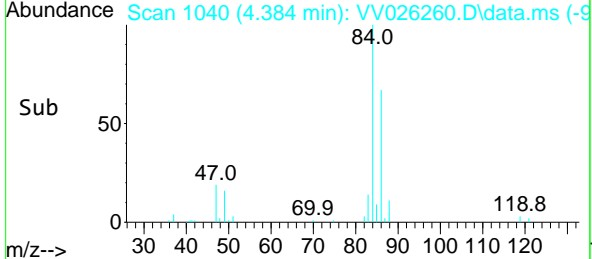
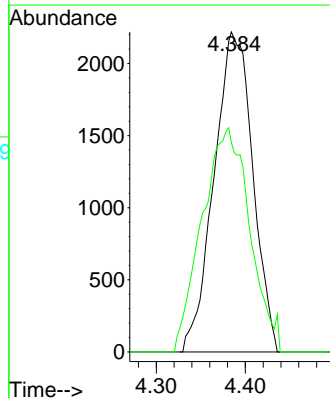
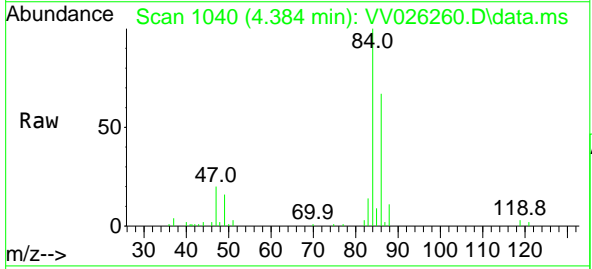
Ion	Ratio	Lower	Upper
84	100		
86	56.9	45.1	83.7
49	93.6	82.3	152.9

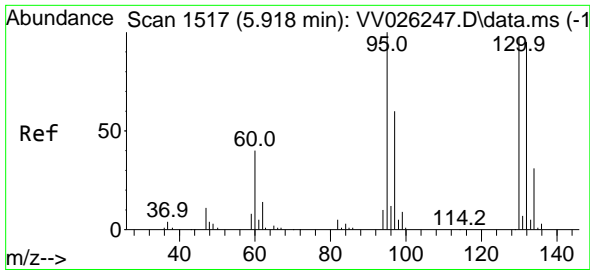


#25
 Chloroform
 Concen: 0.271 ug/L
 RT: 4.384 min Scan# 1040
 Delta R.T. 0.003 min
 Lab File: VV026260.D
 Acq: 15 Jun 2022 01:47

Tgt Ion: 83 Resp: 6696

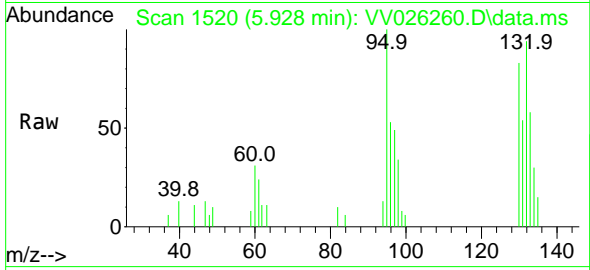
Ion	Ratio	Lower	Upper
83	100		
85	65.4	45.3	84.1





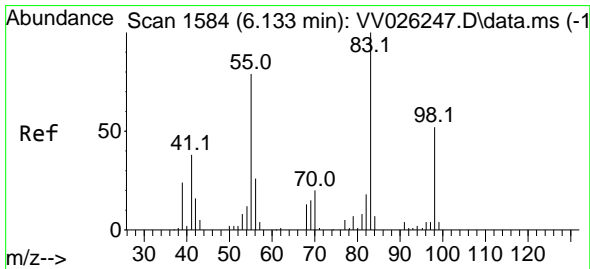
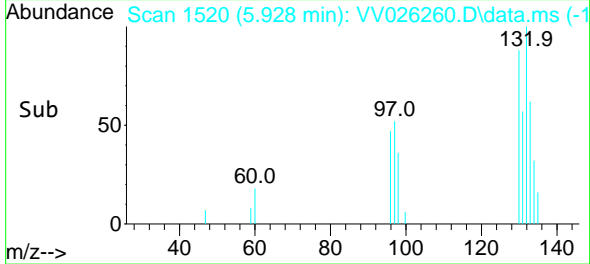
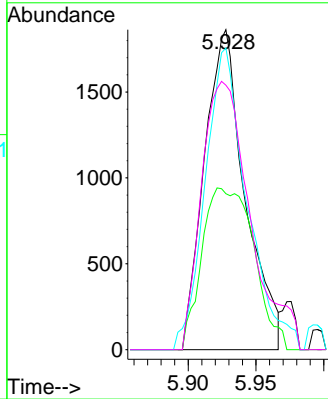
#34
 Trichloroethene
 Concen: 0.291 ug/L
 RT: 5.928 min Scan# 11
 Delta R.T. 0.010 min
 Lab File: VV026260.D
 Acq: 15 Jun 2022 01:47

Instrument :
 MSVOA_V
 ClientSampleId :
 COBE4



Tgt Ion: 95 Resp: 3882

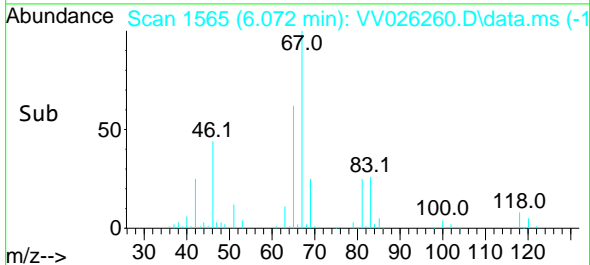
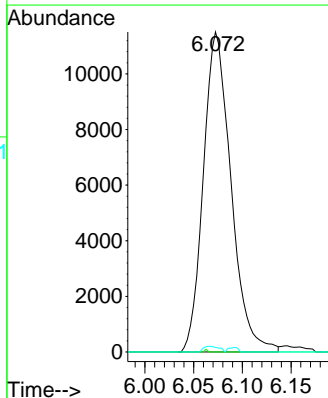
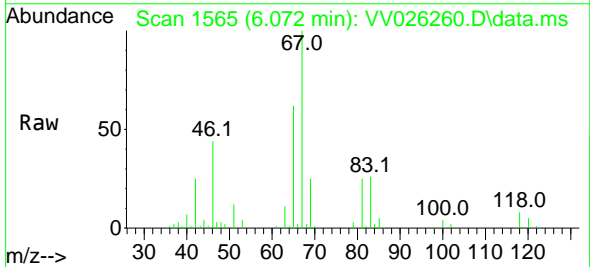
Ion	Ratio	Lower	Upper
95	100		
97	48.7	43.3	80.3
132	94.3	67.5	125.4
130	82.7	70.9	131.7

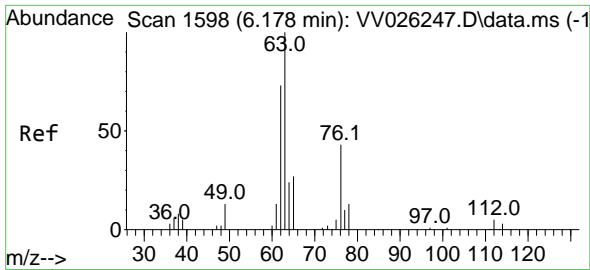


#35
 Methylcyclohexane
 Concen: 1.260 ug/L
 RT: 6.072 min Scan# 1565
 Delta R.T. -0.061 min
 Lab File: VV026260.D
 Acq: 15 Jun 2022 01:47

Tgt Ion: 83 Resp: 22701

Ion	Ratio	Lower	Upper
83	100		
55	0.1	59.5	89.3#
98	1.0	38.4	57.6#

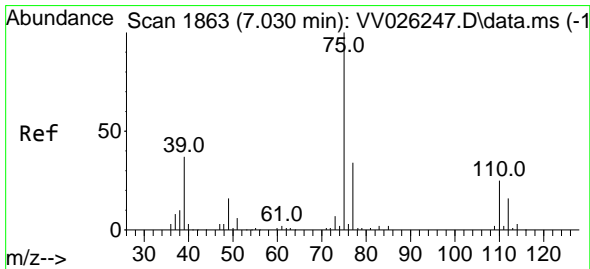
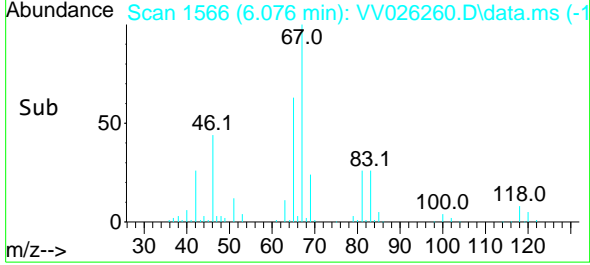
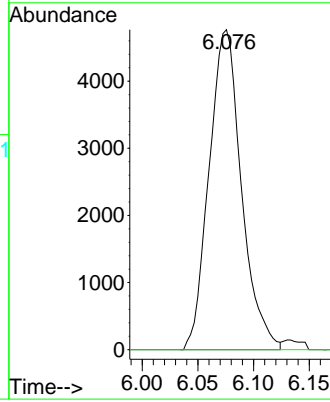
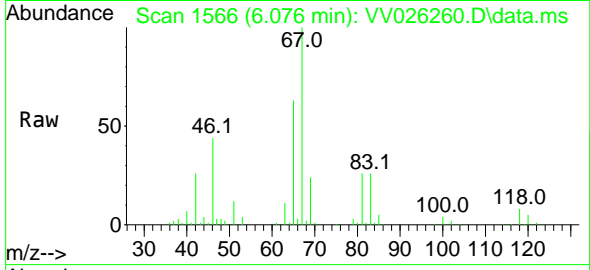




#37
 1,2-Dichloropropane
 Concen: 0.755 ug/L
 RT: 6.076 min Scan# 1111
 Delta R.T. -0.103 min
 Lab File: VV026260.D
 Acq: 15 Jun 2022 01:47

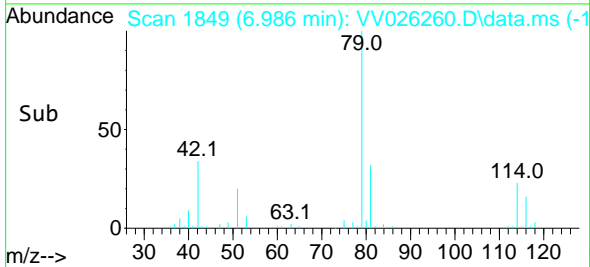
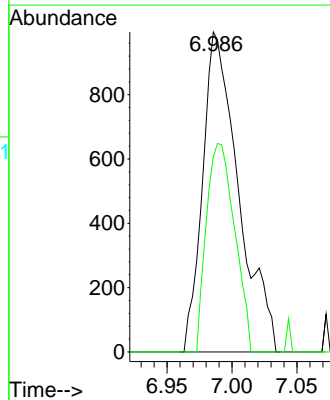
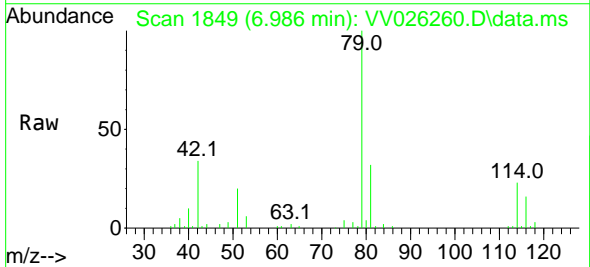
Instrument : MSVOA_V
 ClientSampleId : COBE4

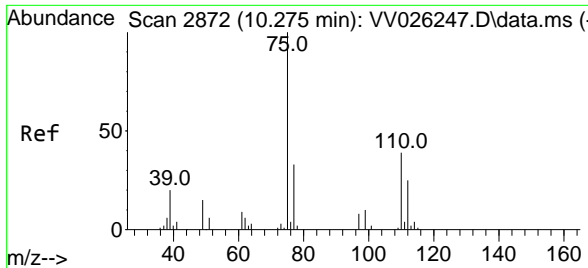
Tgt Ion: 63 Resp: 9643
 Ion Ratio Lower Upper
 63 100
 112 0.0 3.9 5.9#



#39
 cis-1,3-Dichloropropene
 Concen: 0.134 ug/L
 RT: 6.986 min Scan# 1849
 Delta R.T. -0.045 min
 Lab File: VV026260.D
 Acq: 15 Jun 2022 01:47

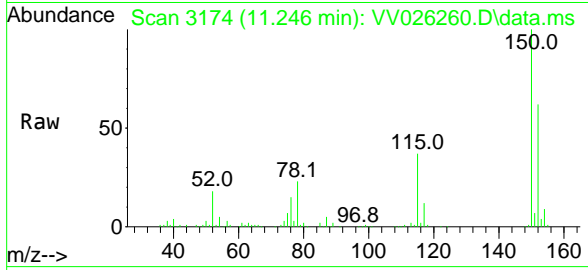
Tgt Ion: 75 Resp: 1911
 Ion Ratio Lower Upper
 75 100
 77 61.0 22.9 42.5#





#61
 1,2,3-Trichloropropane
 Concen: 1.465 ug/L
 RT: 11.246 min Scan# 31
 Delta R.T. 0.971 min
 Lab File: VV026260.D
 Acq: 15 Jun 2022 01:47

Instrument :
 MSVOA_V
 ClientSampleId :
 COBE4



Tgt Ion	Resp	Ion Ratio	Lower	Upper
75	7503	100		
77		34.2	27.8	41.8
110		2.0	33.0	49.4#

