

Data Path : Z:\VOASRV\HPCHEM1\MSVOA\_V\DATA\VV061518\  
 Data File : VV006290.D  
 Acq On : 15 Jun 2018 19:14  
 Operator : SY/MD  
 Sample : VSTDCCC005  
 Misc : 25 mL/MSVOA\_V/WATER  
 ALS Vial : 1 Sample Multiplier: 1

Instrument :  
 MSVOA\_V  
 ClientSampleId :  
 VSTD00566

Quant Time: Jun 15 23:53:00 2018  
 Quant Method : Z:\VOASRV\HPCHEM1\MSVOA\_V\METHOD\SOMVTR053118WMA.M  
 Quant Title : TRACE VOA SOM01.0  
 QLast Update : Fri Jun 15 23:47:49 2018  
 Response via : Initial Calibration

Internal Standards	R.T.	QIon	Response	Conc	Units	Dev(Min)
1) 1,4-Difluorobenzene	5.67	114	317967	5.00	ug/L	0.00
28) Chlorobenzene-d5	8.90	117	288716	5.00	ug/L	0.00
60) 1,4-Dichlorobenzene-d4	11.30	152	140462	5.00	ug/L	0.00

## System Monitoring Compounds

4) Vinyl Chloride-d3	1.32	65	85063	4.90	ug/L	0.00
Spiked Amount	5.000	Range	40 - 130	Recovery	=	98.00%
7) Chloroethane-d5	1.58	69	70198	5.05	ug/L	0.00
Spiked Amount	5.000	Range	65 - 130	Recovery	=	101.00%
11) 1,1-Dichloroethene-d2	2.13	63	164520	4.87	ug/L	0.00
Spiked Amount	5.000	Range	60 - 125	Recovery	=	97.40%
20) 2-Butanone-d5	3.98	46	194476	52.74	ug/L	0.00
Spiked Amount	50.000	Range	40 - 130	Recovery	=	105.48%
24) Chloroform-d	4.41	84	160771	4.78	ug/L	0.00
Spiked Amount	5.000	Range	70 - 125	Recovery	=	95.60%
26) 1,2-Dichloroethane-d4	5.09	65	78997	4.86	ug/L	0.00
Spiked Amount	5.000	Range	70 - 130	Recovery	=	97.20%
32) Benzene-d6	5.10	84	330940	4.77	ug/L	0.00
Spiked Amount	5.000	Range	70 - 125	Recovery	=	95.40%
36) 1,2-Dichloropropane-d6	6.12	67	97790	4.69	ug/L	0.00
Spiked Amount	5.000	Range	60 - 140	Recovery	=	93.80%
41) Toluene-d8	7.36	98	315984	4.78	ug/L	0.00
Spiked Amount	5.000	Range	70 - 130	Recovery	=	95.60%
43) trans-1,3-Dichloropropene-	7.67	79	37737	4.04	ug/L	0.00
Spiked Amount	5.000	Range	55 - 130	Recovery	=	80.80%
46) 2-Hexanone-d5	8.14	63	176937	43.91	ug/L	0.00
Spiked Amount	50.000	Range	45 - 130	Recovery	=	87.82%
57) 1,1,2,2-Tetrachloroethane-	10.27	84	69117	4.58	ug/L	0.00
Spiked Amount	5.000	Range	65 - 120	Recovery	=	91.60%
64) 1,2-Dichlorobenzene-d4	11.68	152	121909	5.00	ug/L	0.00
Spiked Amount	5.000	Range	80 - 120	Recovery	=	100.00%

## Target Compounds

Target Compounds	R.T.	QIon	Response	Conc	Units	Qvalue
2) Dichlorodifluoromethane	1.14	85	98937	4.086	ug/L	99
3) Chloromethane	1.26	50	98246	4.851	ug/L	99
5) Vinyl chloride	1.32	62	115293	4.701	ug/L	99
6) Bromomethane	1.54	94	54476	4.182	ug/L	98
8) Chloroethane	1.60	64	72203	5.267	ug/L	99
9) Trichlorofluoromethane	1.77	101	154200	4.847	ug/L	99
10) 1,1,2-Trichloro-1,2,2-trif	2.14	101	95857	4.882	ug/L	99
12) 1,1-Dichloroethene	2.14	96	89864	4.925	ug/L	91
13) Acetone	2.23	43	125833	62.975	ug/L	94
14) Carbon disulfide	2.32	76	232088	3.797	ug/L	99
15) Methyl Acetate	2.48	43	34308	5.769	ug/L	98
16) Methylene chloride	2.54	84	98936	4.911	ug/L	99
17) Methyl tert-butyl Ether	2.82	73	229395	5.081	ug/L	98
18) trans-1,2-Dichloroethene	2.79	96	98860	4.966	ug/L	98
19) 1,1-Dichloroethane	3.23	63	167358	4.998	ug/L	100
21) 2-Butanone	4.06	43	195446	53.766	ug/L	95
22) cis-1,2-Dichloroethene	3.97	96	104421	4.847	ug/L #	100

Data Path : Z:\VOASRV\HPCHEM1\MSVOA\_V\DATA\VV061518\  
 Data File : VV006290.D  
 Acq On : 15 Jun 2018 19:14  
 Operator : SY/MD  
 Sample : VSTDCCC005  
 Misc : 25 mL/MSVOA\_V/WATER  
 ALS Vial : 1 Sample Multiplier: 1

Instrument :  
 MSVOA\_V  
 ClientSampleId :  
 VSTD00566

Quant Time: Jun 15 23:53:00 2018  
 Quant Method : Z:\VOASRV\HPCHEM1\MSVOA\_V\METHOD\SOMVTR053118WMA.M  
 Quant Title : TRACE VOA SOM01.0  
 QLast Update : Fri Jun 15 23:47:49 2018  
 Response via : Initial Calibration

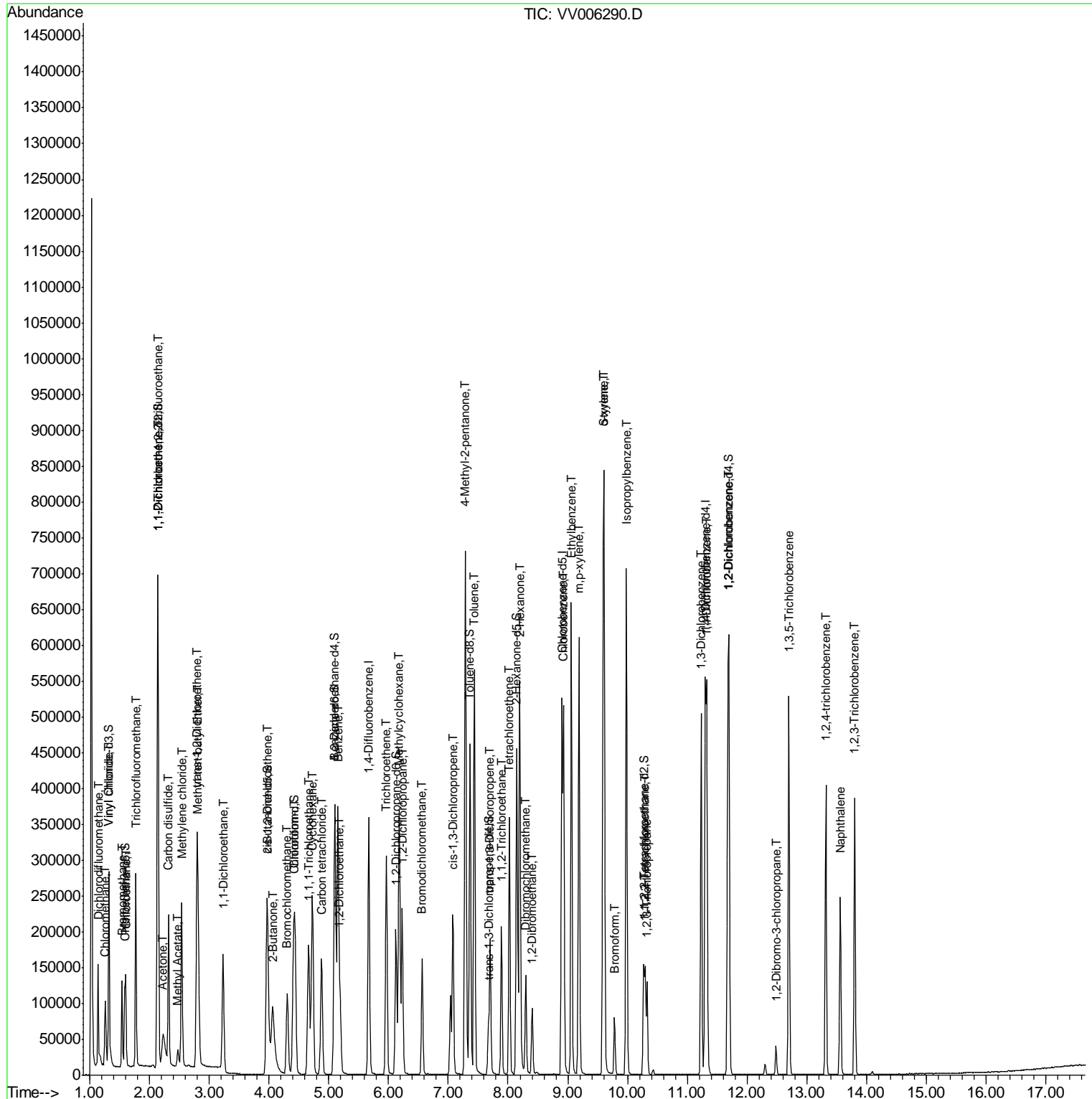
Internal Standards	R.T.	QIon	Response	Conc	Units	Dev(Min)
23) Bromochloromethane	4.30	128	42294	4.895	ug/L	98
25) Chloroform	4.43	83	170094	4.919	ug/L	98
27) 1,2-Dichloroethane	5.19	62	96977	4.884	ug/L	99
29) 1,1,1-Trichloroethane	4.66	97	145390	4.558	ug/L	99
30) Cyclohexane	4.73	56	140088	4.270	ug/L	99
31) Carbon tetrachloride	4.88	117	119954	4.264	ug/L	99
33) Benzene	5.15	78	382349	4.803	ug/L	100
34) Trichloroethene	5.96	95	104101	4.791	ug/L	98
35) Methylcyclohexane	6.18	83	165921	4.443	ug/L	98
37) 1,2-Dichloropropane	6.23	63	91197	4.782	ug/L	100
38) Bromodichloromethane	6.56	83	109796	4.324	ug/L	97
39) cis-1,3-Dichloropropene	7.08	75	134950	4.342	ug/L	99
40) 4-Methyl-2-pentanone	7.29	43	473051	47.961	ug/L	99
42) Toluene	7.44	91	417885	4.756	ug/L	100
44) trans-1,3-Dichloropropene	7.70	75	105063	4.167	ug/L	97
45) 1,1,2-Trichloroethane	7.89	97	66164	4.902	ug/L	99
47) Tetrachloroethene	8.02	164	83918	4.826	ug/L	99
48) 2-Hexanone	8.20	43	340715	49.151	ug/L	98
49) Dibromochloromethane	8.30	129	71581	4.212	ug/L	96
50) 1,2-Dibromoethane	8.40	107	60751	4.831	ug/L	99
51) Chlorobenzene	8.93	112	278434	4.936	ug/L	100
52) Ethylbenzene	9.06	91	465540	4.756	ug/L	100
53) m,p-xylene	9.19	106	179973	4.713	ug/L	99
54) o-xylene	9.59	106	178300	4.774	ug/L	98
55) Styrene	9.61	104	294859	4.800	ug/L	98
56) Isopropylbenzene	9.98	105	470858	4.788	ug/L	100
58) 1,1,2,2-Tetrachloroethane	10.29	83	69084	4.469	ug/L	99
59) 1,2,3-Trichloropropane	10.33	75	53096	4.942	ug/L	100
61) Bromoform	9.78	173	35781	3.754	ug/L	98
62) 1,3-Dichlorobenzene	11.23	146	213862	4.833	ug/L	99
63) 1,4-Dichlorobenzene	11.32	146	213959	4.888	ug/L	98
65) 1,2-Dichlorobenzene	11.70	146	202722	4.965	ug/L	100
66) 1,2-Dibromo-3-chloropropan	12.48	75	9536	3.554	ug/L	97
67) 1,3,5-Trichlorobenzene	12.70	180	166320	4.883	ug/L	98
68) 1,2,4-trichlorobenzene	13.32	180	130460	4.954	ug/L	99
69) Naphthalene	13.56	128	204821	4.622	ug/L	100
70) 1,2,3-Trichlorobenzene	13.80	180	121800	5.034	ug/L	99

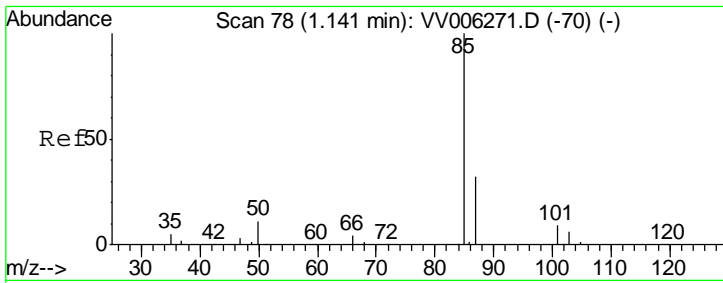
(#) = qualifier out of range (m) = manual integration (+) = signals summed

Data Path : Z:\VOASRV\HPCHEM1\MSVOA\_V\DATA\VV061518\  
 Data File : VV006290.D  
 Acq On : 15 Jun 2018 19:14  
 Operator : SY/MD  
 Sample : VSTDCCC005  
 Misc : 25 mL/MSVOA\_V/WATER  
 ALS Vial : 1 Sample Multiplier: 1

Instrument :  
 MSVOA\_V  
 ClientSampleID :  
 VSTD00566

Quant Time: Jun 15 23:53:00 2018  
 Quant Method : Z:\VOASRV\HPCHEM1\MSVOA\_V\METHOD\SOMVTR053118WMA.M  
 Quant Title : TRACE VOA SOM01.0  
 QLast Update : Fri Jun 15 23:47:49 2018  
 Response via : Initial Calibration

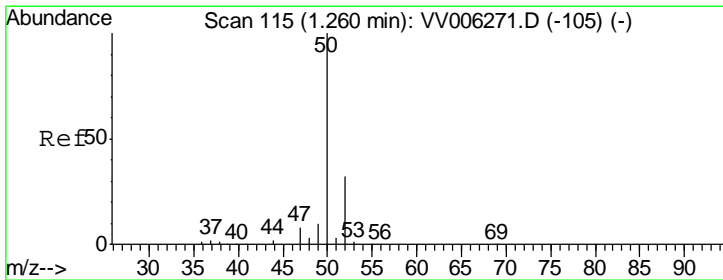
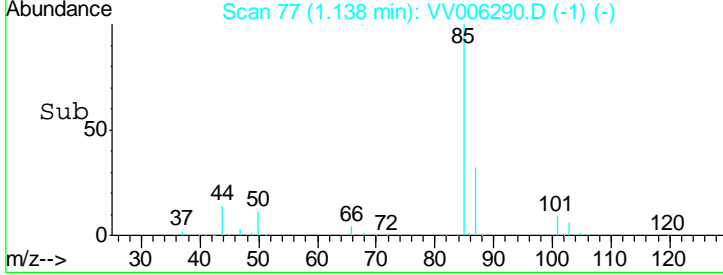
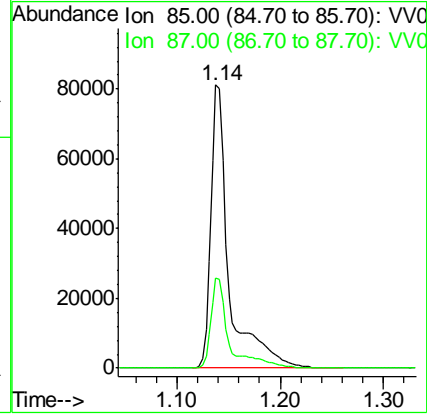
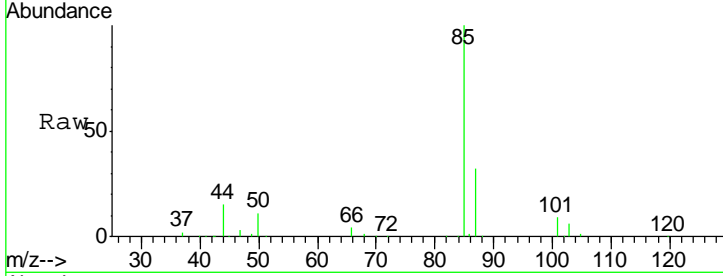




#2  
 Dichlorodifluoromethane  
 Concen: 4.086 ug/L  
 RT: 1.14 min Scan# 77  
 Delta R.T. -0.00 min  
 Lab File: VV006290.D  
 Acq: 15 Jun 2018 19:14

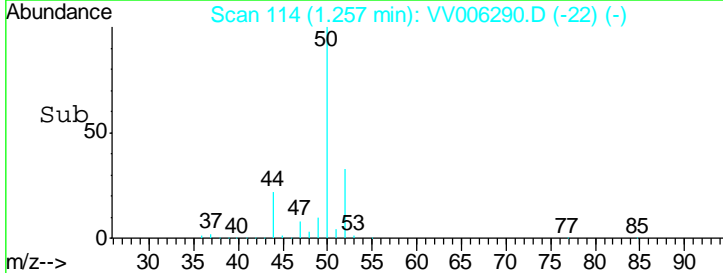
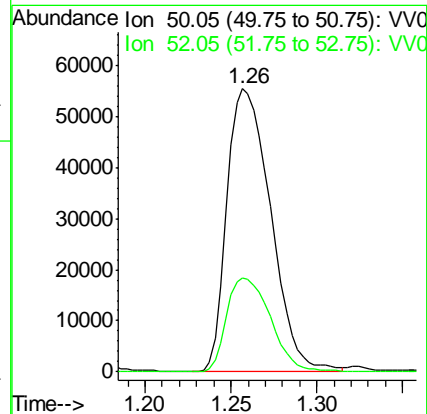
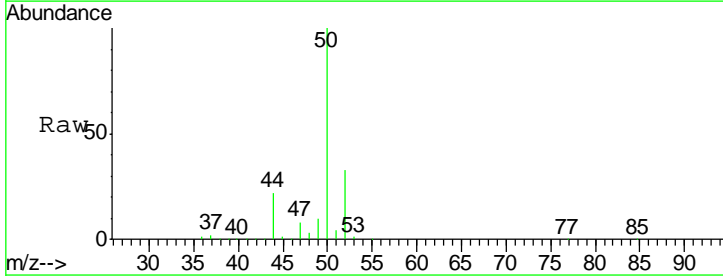
Instrument : MSVOA\_V  
 ClientSampled : VSTD00566

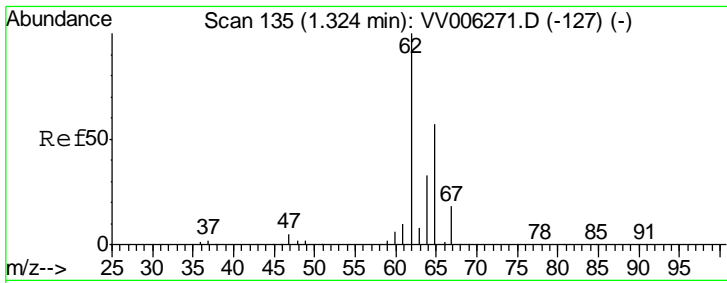
Tgt Ion: 85 Resp: 98937  
 Ion Ratio Lower Upper  
 85 100  
 87 32.0 26.2 39.4



#3  
 Chloromethane  
 Concen: 4.851 ug/L  
 RT: 1.26 min Scan# 114  
 Delta R.T. -0.00 min  
 Lab File: VV006290.D  
 Acq: 15 Jun 2018 19:14

Tgt Ion: 50 Resp: 98246  
 Ion Ratio Lower Upper  
 50 100  
 52 33.2 23.0 42.8

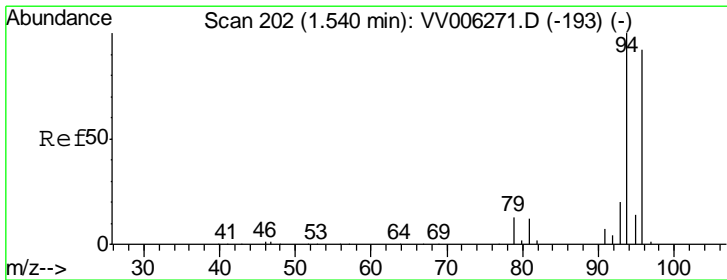
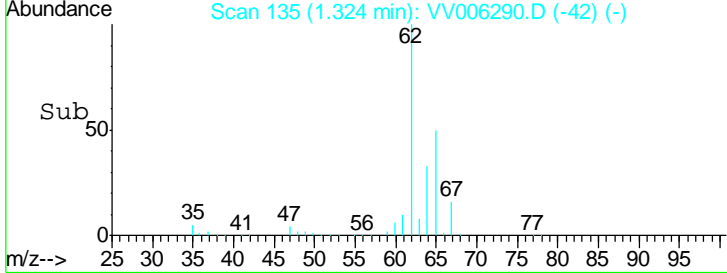
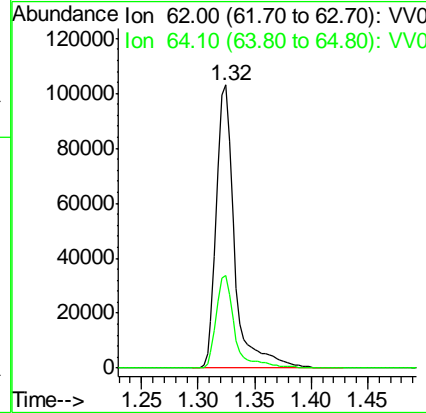
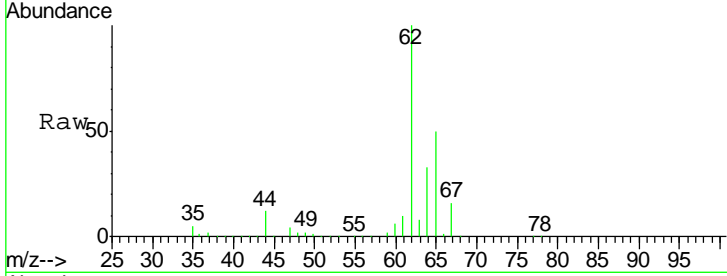




#5  
 Vinyl chloride  
 Concen: 4.701 ug/L  
 RT: 1.32 min Scan# 135  
 Delta R.T. -0.00 min  
 Lab File: VV006290.D  
 Acq: 15 Jun 2018 19:14

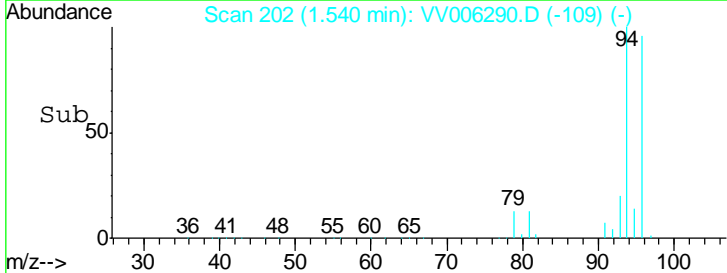
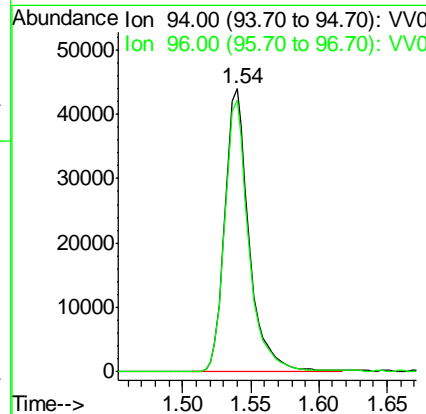
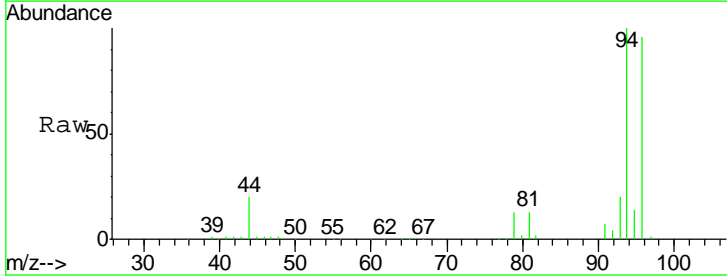
Instrument : MSVOA\_V  
 ClientSampled : VSTD00566

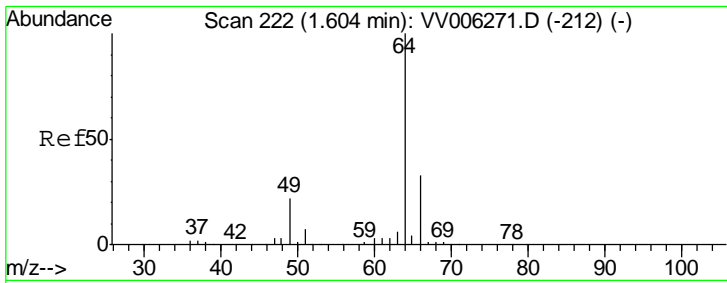
Tgt Ion	Resp	Lower	Upper
62	115293		
64	32.6	23.1	42.9



#6  
 Bromomethane  
 Concen: 4.182 ug/L  
 RT: 1.54 min Scan# 202  
 Delta R.T. -0.00 min  
 Lab File: VV006290.D  
 Acq: 15 Jun 2018 19:14

Tgt Ion	Resp	Lower	Upper
94	54476		
96	96.2	68.9	127.9

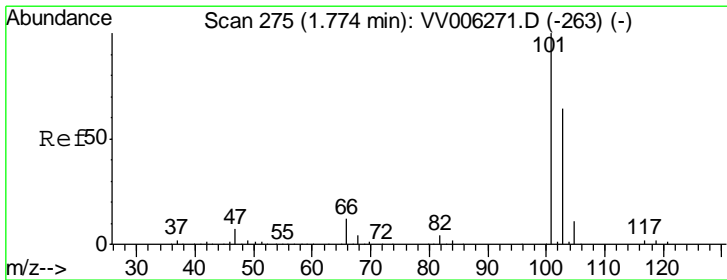
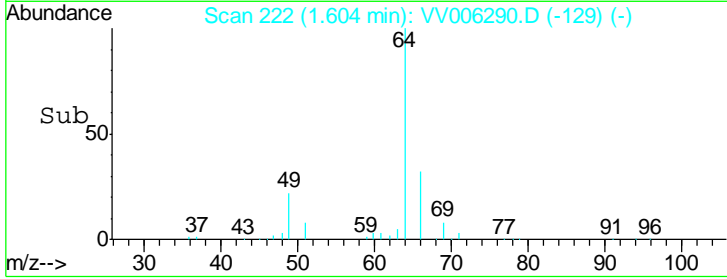
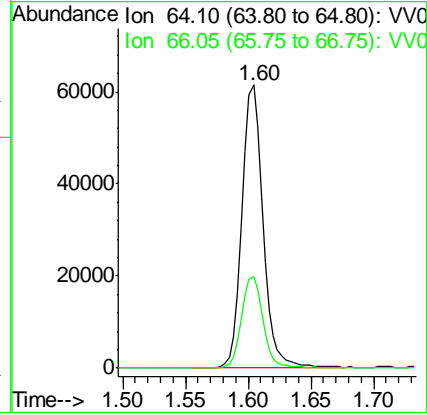
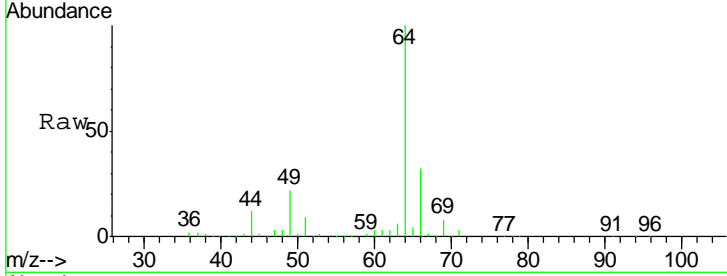




#8  
 Chloroethane  
 Concen: 5.267 ug/L  
 RT: 1.60 min Scan# 222  
 Delta R.T. -0.00 min  
 Lab File: VV006290.D  
 Acq: 15 Jun 2018 19:14

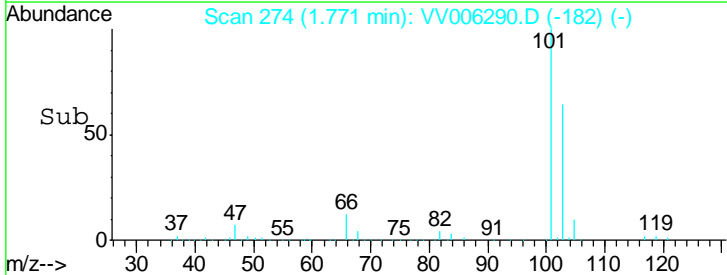
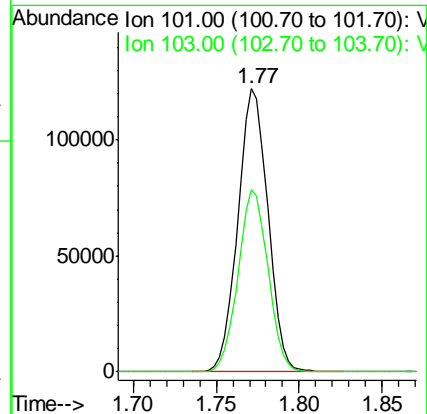
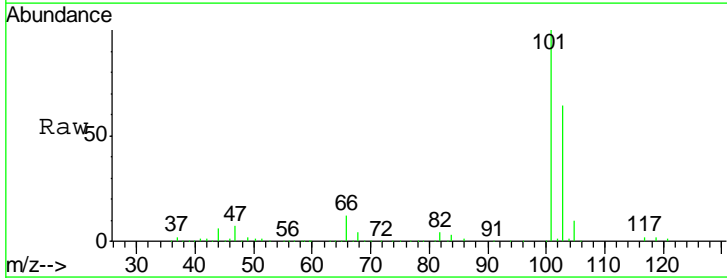
Instrument :  
 MSVOA\_V  
 ClientSampled :  
 VSTD00566

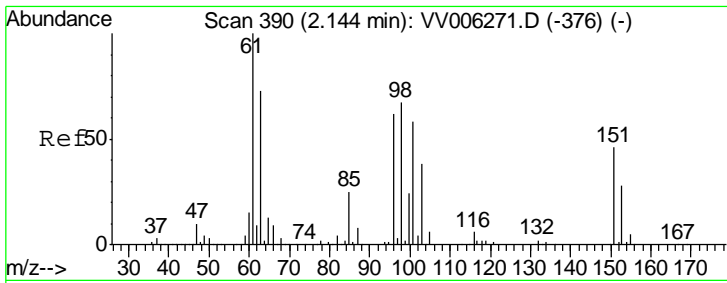
Tgt Ion: 64 Resp: 72203  
 Ion Ratio Lower Upper  
 64 100  
 66 32.5 22.5 41.7



#9  
 Trichlorofluoromethane  
 Concen: 4.847 ug/L  
 RT: 1.77 min Scan# 274  
 Delta R.T. -0.00 min  
 Lab File: VV006290.D  
 Acq: 15 Jun 2018 19:14

Tgt Ion: 101 Resp: 154200  
 Ion Ratio Lower Upper  
 101 100  
 103 64.3 52.0 78.0





#10

1,1,2-Trichloro-1,2,2-trifluoroethane

Concen: 4.882 ug/L

RT: 2.14 min Scan# 389

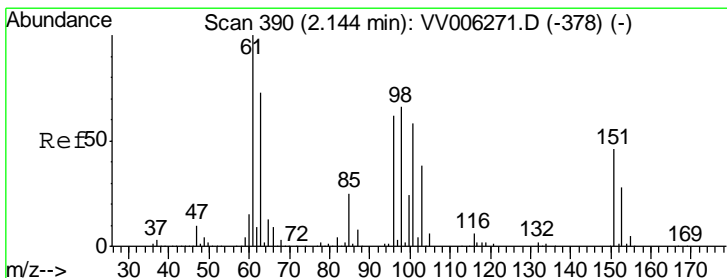
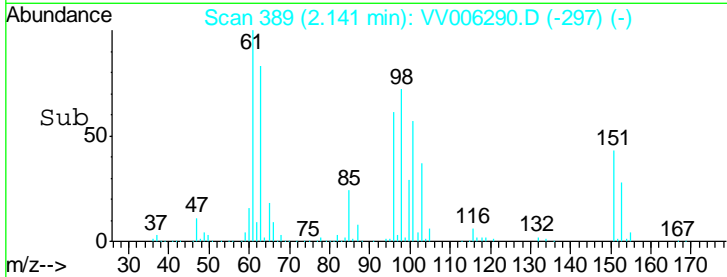
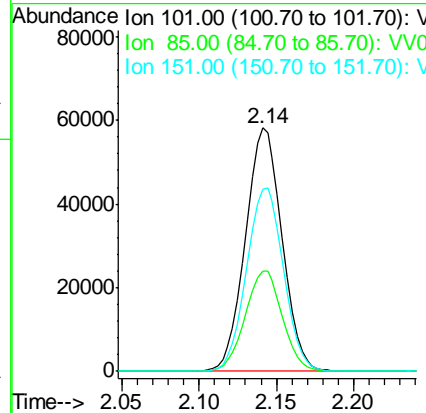
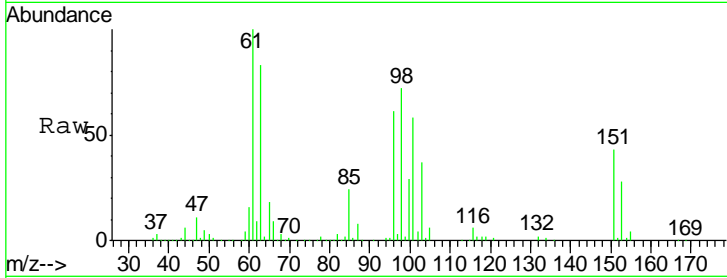
Delta R.T. -0.00 min

Lab File: VV006290.D

Acq: 15 Jun 2018 19:14

Instrument :  
MSVOA\_V  
ClientSampled :  
VSTD00566

Tgt Ion	Resp	Lower	Upper
101	95857		
101	100		
85	41.9	32.6	49.0
151	76.5	60.9	91.3



#12

1,1-Dichloroethene

Concen: 4.925 ug/L

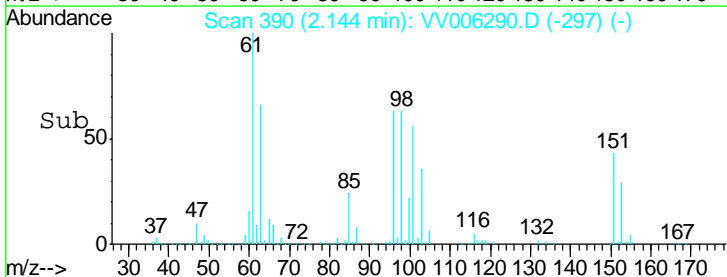
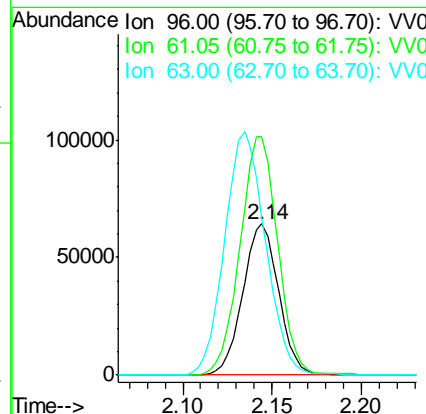
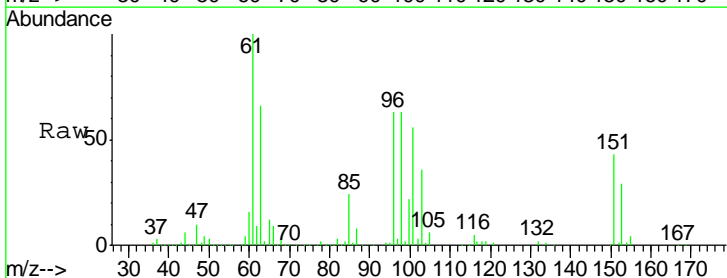
RT: 2.14 min Scan# 390

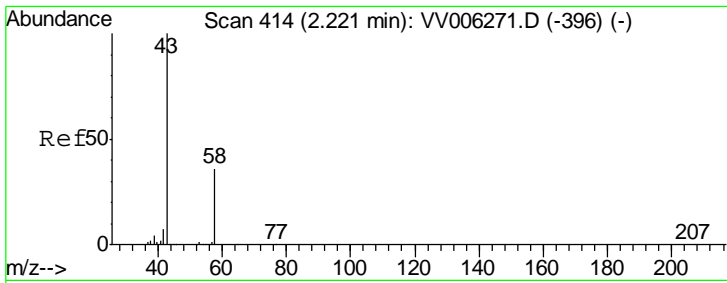
Delta R.T. -0.00 min

Lab File: VV006290.D

Acq: 15 Jun 2018 19:14

Tgt Ion	Resp	Lower	Upper
96	89864		
96	100		
61	158.2	114.2	212.2
63	104.4	85.0	157.8

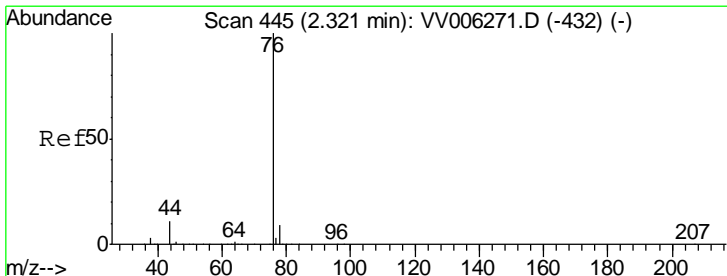
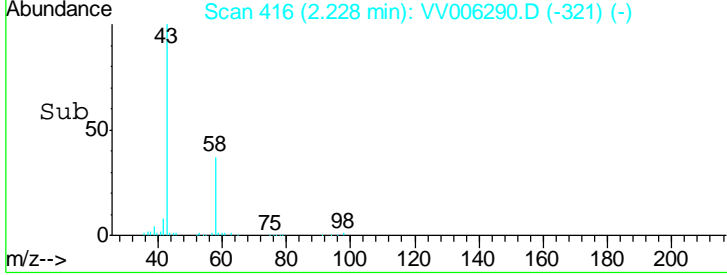
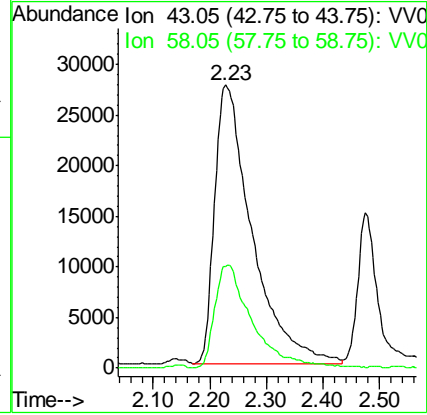
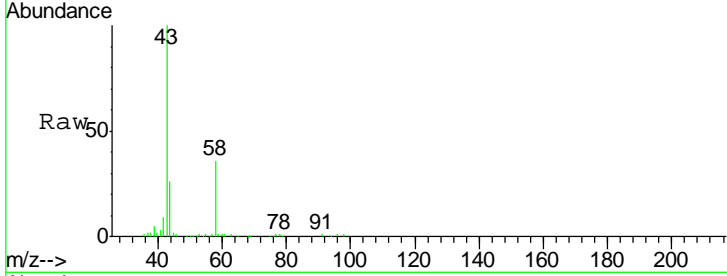




#13  
 Acetone  
 Concen: 62.975 ug/L  
 RT: 2.23 min Scan# 416  
 Delta R.T. 0.01 min  
 Lab File: VV006290.D  
 Acq: 15 Jun 2018 19:14

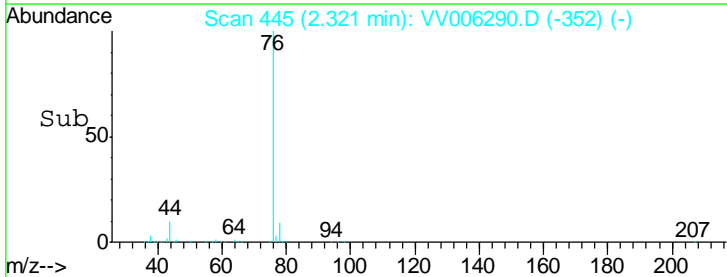
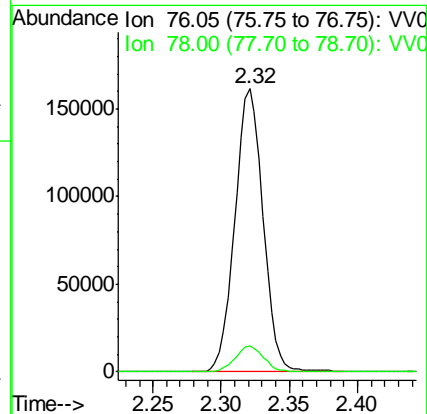
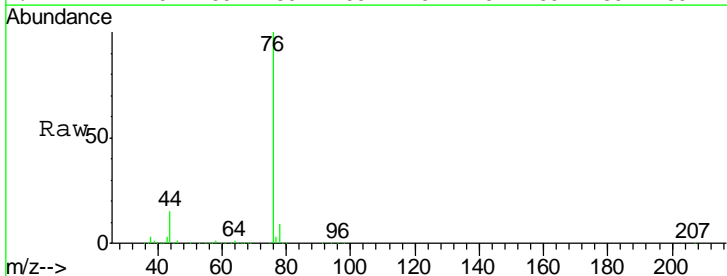
Instrument : MSVOA\_V  
 ClientSampled : VSTD00566

Tgt Ion: 43 Resp: 125833  
 Ion Ratio Lower Upper  
 43 100  
 58 37.0 0.0 67.4

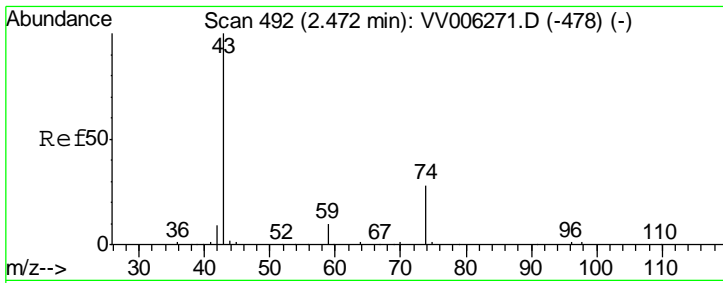


#14  
 Carbon disulfide  
 Concen: 3.797 ug/L  
 RT: 2.32 min Scan# 445  
 Delta R.T. -0.00 min  
 Lab File: VV006290.D  
 Acq: 15 Jun 2018 19:14

Tgt Ion: 76 Resp: 232088  
 Ion Ratio Lower Upper  
 76 100  
 78 9.1 7.5 11.3



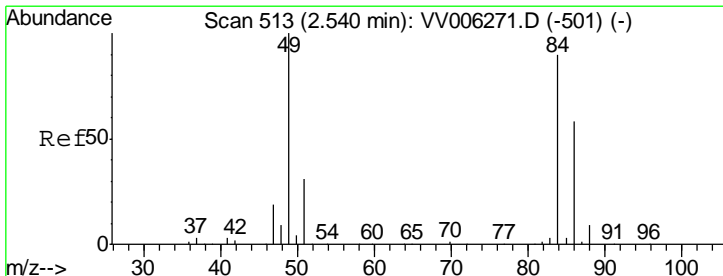
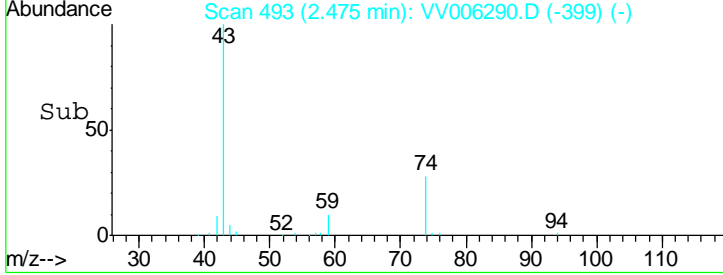
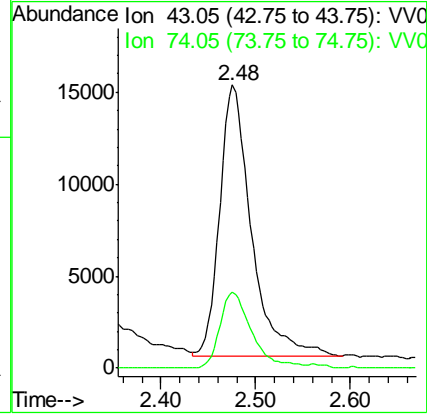
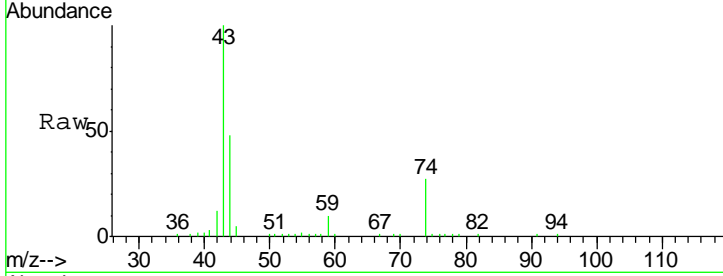




#15  
 Methyl Acetate  
 Concen: 5.769 ug/L  
 RT: 2.48 min Scan# 493  
 Delta R.T. 0.00 min  
 Lab File: VV006290.D  
 Acq: 15 Jun 2018 19:14

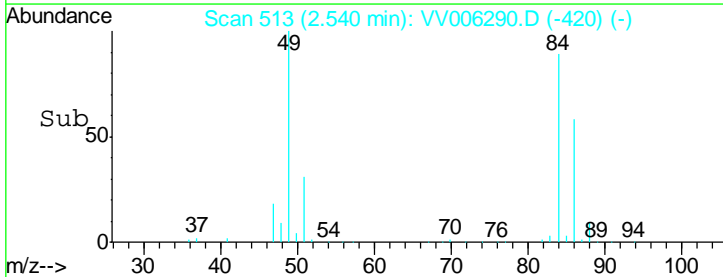
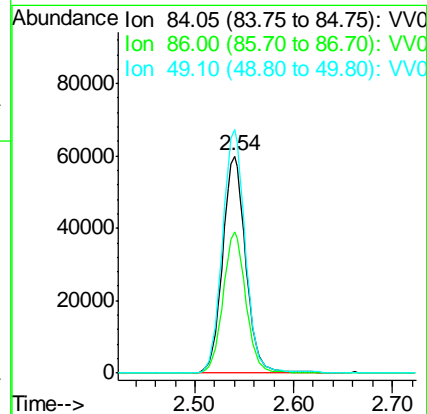
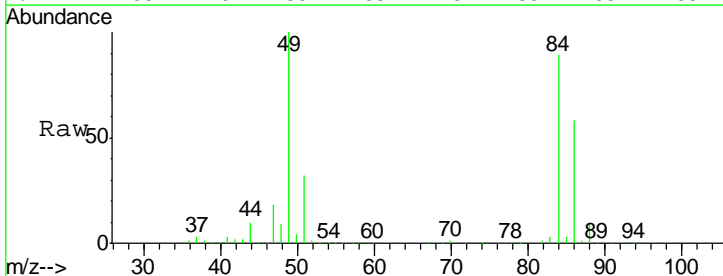
Instrument :  
 MSVOA\_V  
 ClientSampled :  
 VSTD00566

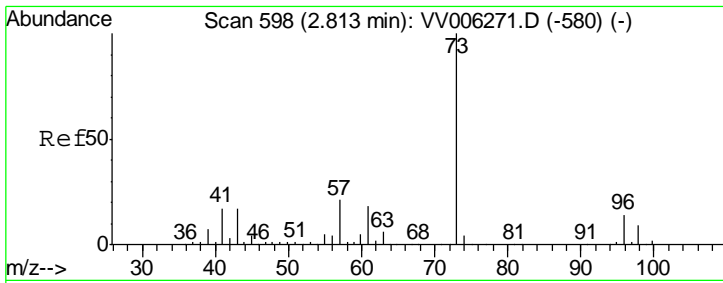
Tgt Ion: 43 Resp: 34308  
 Ion Ratio Lower Upper  
 43 100  
 74 28.3 23.4 35.0



#16  
 Methylene chloride  
 Concen: 4.911 ug/L  
 RT: 2.54 min Scan# 513  
 Delta R.T. -0.00 min  
 Lab File: VV006290.D  
 Acq: 15 Jun 2018 19:14

Tgt Ion: 84 Resp: 98936  
 Ion Ratio Lower Upper  
 84 100  
 86 65.1 44.2 82.0  
 49 112.3 78.8 146.4

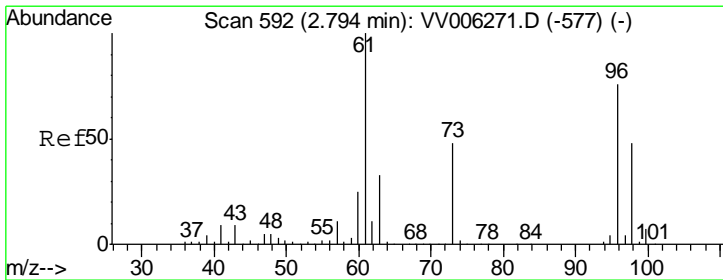
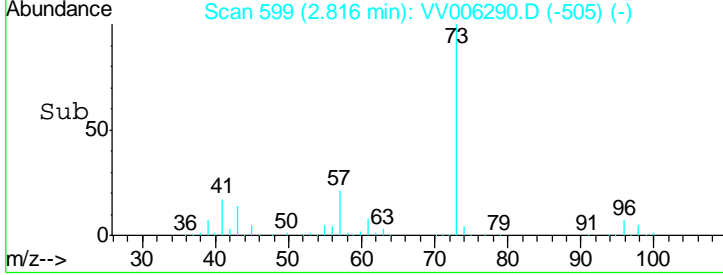
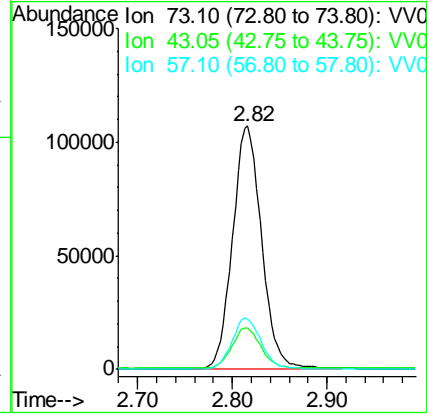
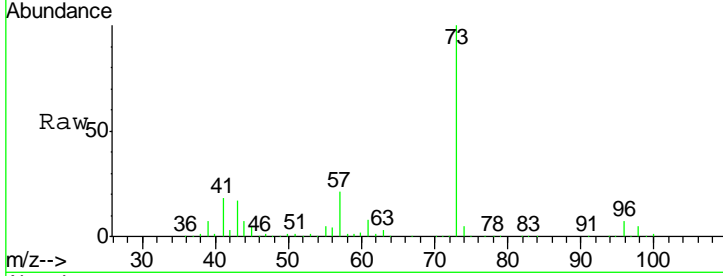




#17  
 Methyl tert-butyl Ether  
 Concen: 5.081 ug/L  
 RT: 2.82 min Scan# 599  
 Delta R.T. 0.00 min  
 Lab File: VV006290.D  
 Acq: 15 Jun 2018 19:14

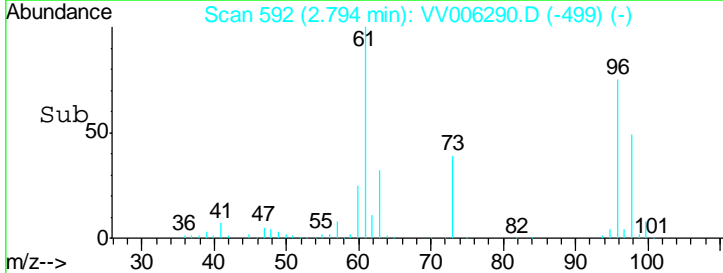
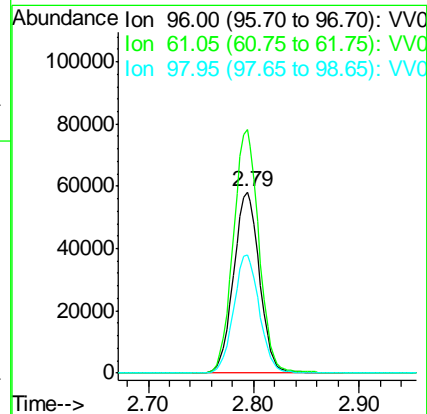
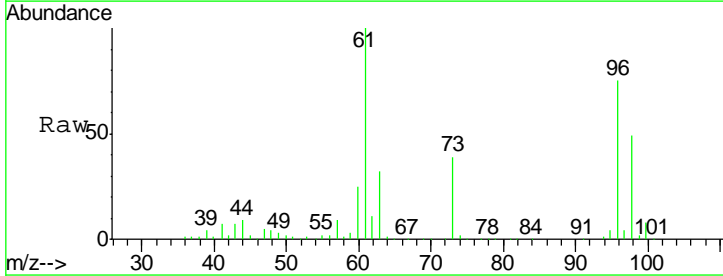
**Instrument :**  
 MSVOA\_V  
**ClientSampled :**  
 VSTD00566

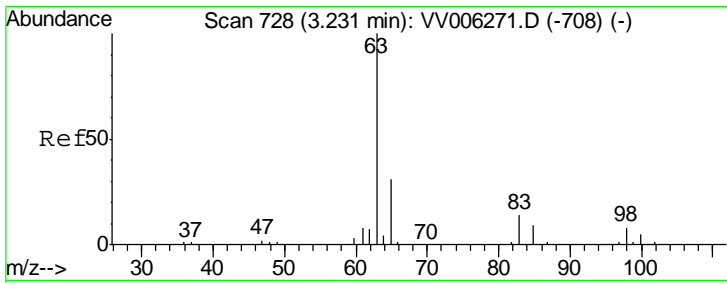
Tgt Ion	Resp	Lower	Upper
73	100		
43	16.4	14.2	21.4
57	21.4	16.8	25.2



#18  
 trans-1,2-Dichloroethene  
 Concen: 4.966 ug/L  
 RT: 2.79 min Scan# 592  
 Delta R.T. -0.00 min  
 Lab File: VV006290.D  
 Acq: 15 Jun 2018 19:14

Tgt Ion	Resp	Lower	Upper
96	100		
61	134.1	96.3	178.9
98	65.3	45.4	84.2

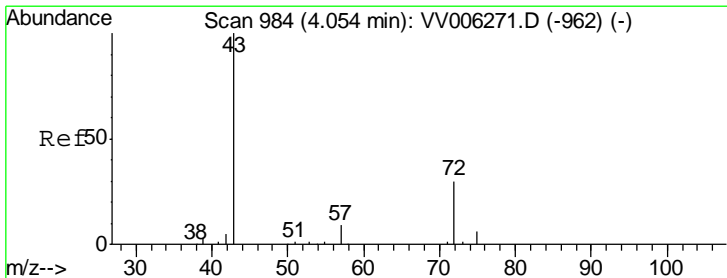
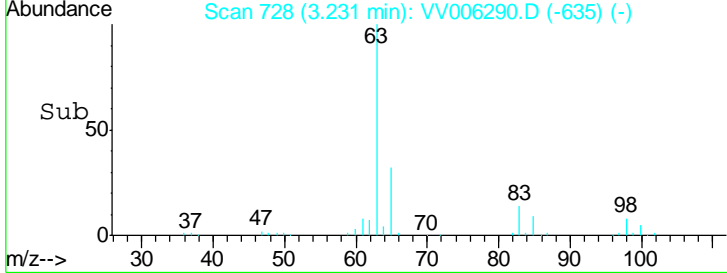
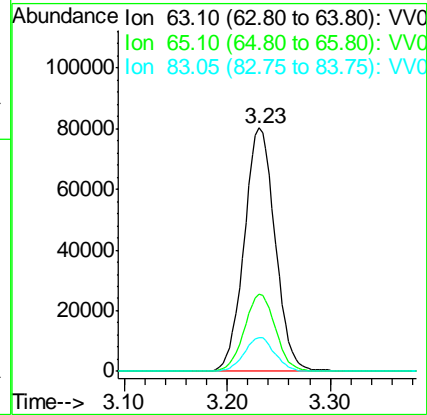
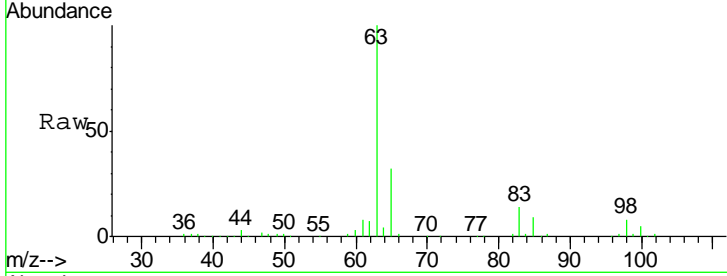




#19  
 1,1-Dichloroethane  
 Concen: 4.998 ug/L  
 RT: 3.23 min Scan# 728  
 Delta R.T. -0.00 min  
 Lab File: VV006290.D  
 Acq: 15 Jun 2018 19:14

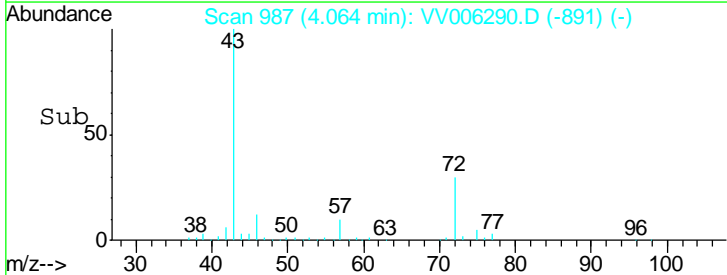
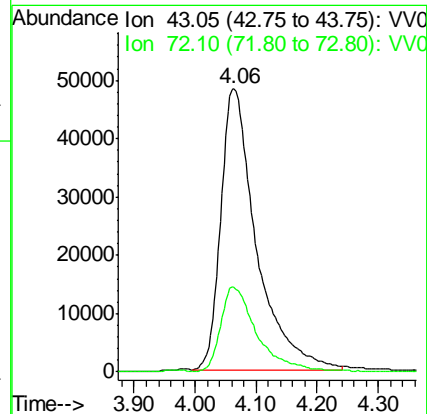
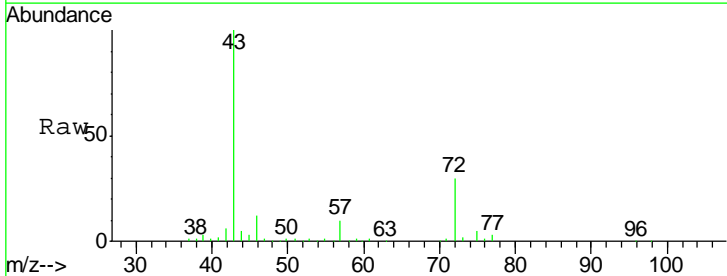
Instrument :  
 MSVOA\_V  
 ClientSampled :  
 VSTD00566

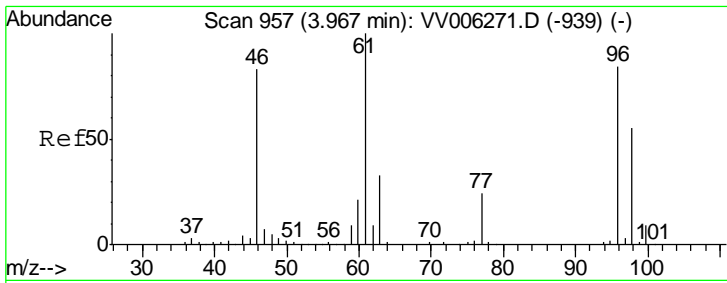
Tgt Ion	Resp	Lower	Upper
63	167358		
65	31.7	22.3	41.3
83	13.8	10.0	18.6



#21  
 2-Butanone  
 Concen: 53.766 ug/L  
 RT: 4.06 min Scan# 987  
 Delta R.T. 0.01 min  
 Lab File: VV006290.D  
 Acq: 15 Jun 2018 19:14

Tgt Ion	Resp	Lower	Upper
43	195446		
72	30.3	13.8	41.3

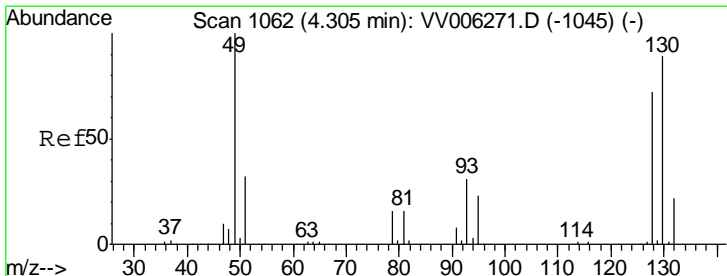
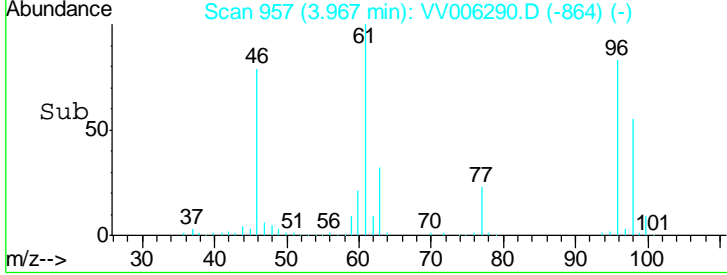
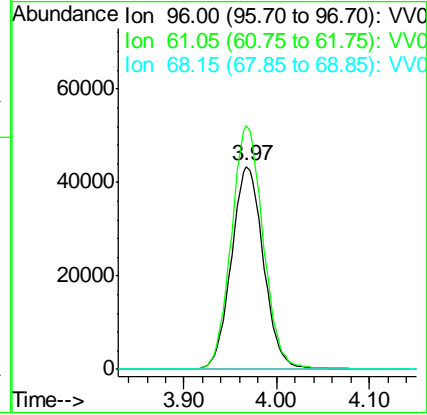
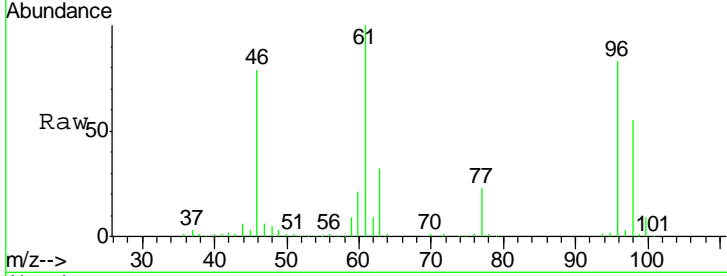




#22  
 cis-1,2-Dichloroethene  
 Concen: 4.847 ug/L  
 RT: 3.97 min Scan# 957  
 Delta R.T. -0.00 min  
 Lab File: VV006290.D  
 Acq: 15 Jun 2018 19:14

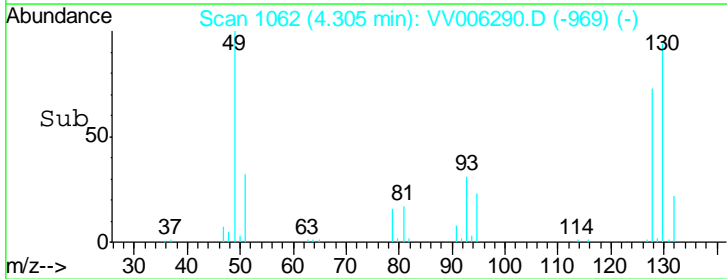
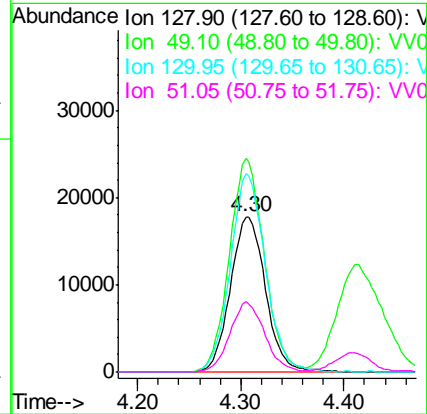
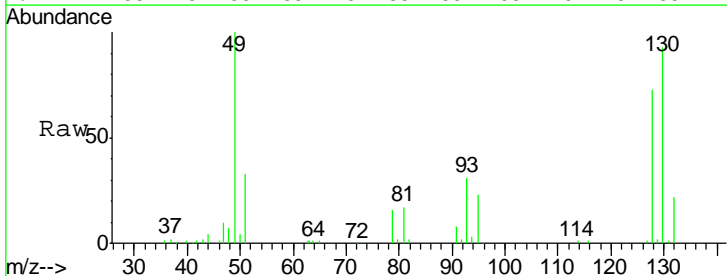
Instrument :  
 MSVOA\_V  
 ClientSampled :  
 VSTD00566

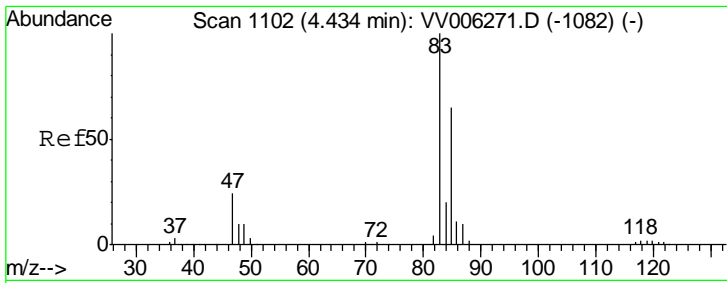
Tgt Ion	Resp	Lower	Upper
96	104421		
61	120.1	84.1	156.3
68	0.0	0.3	0.5#



#23  
 Bromochloromethane  
 Concen: 4.895 ug/L  
 RT: 4.30 min Scan# 1062  
 Delta R.T. -0.00 min  
 Lab File: VV006290.D  
 Acq: 15 Jun 2018 19:14

Tgt Ion	Resp	Lower	Upper
128	42294		
128	100		
49	137.4	97.1	180.3
130	127.7	86.6	160.8
51	45.3	35.9	53.9

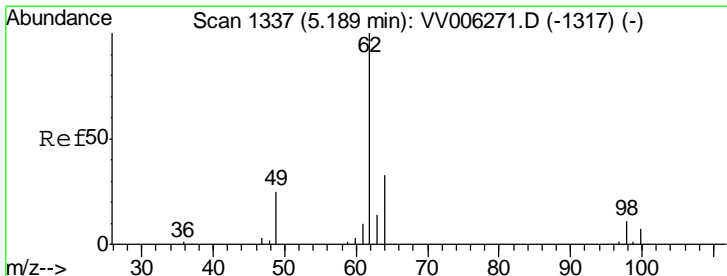
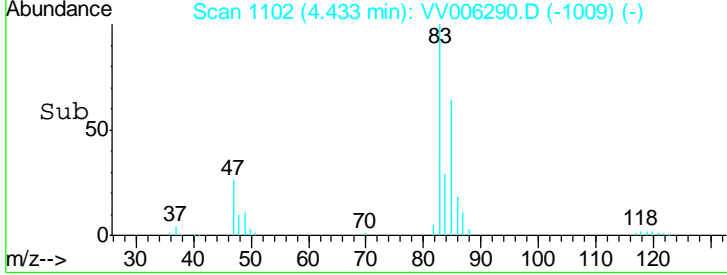
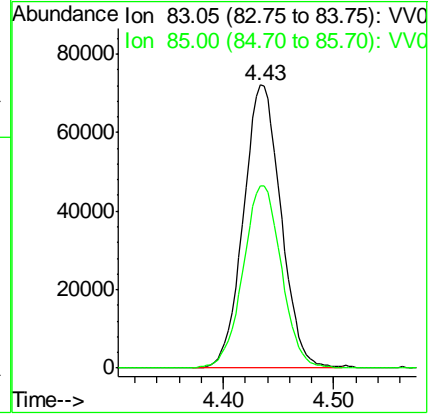
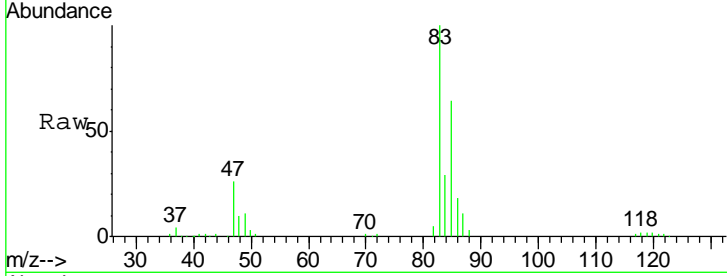




#25  
 Chloroform  
 Concen: 4.919 ug/L  
 RT: 4.43 min Scan# 1102  
 Delta R.T. -0.00 min  
 Lab File: VV006290.D  
 Acq: 15 Jun 2018 19:14

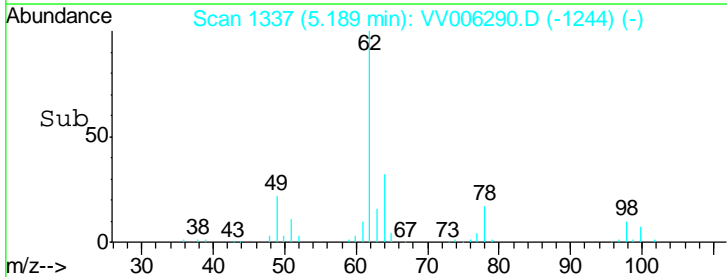
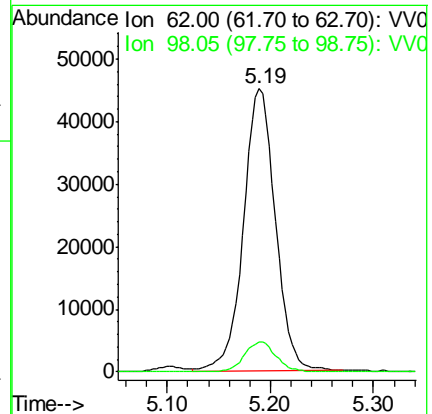
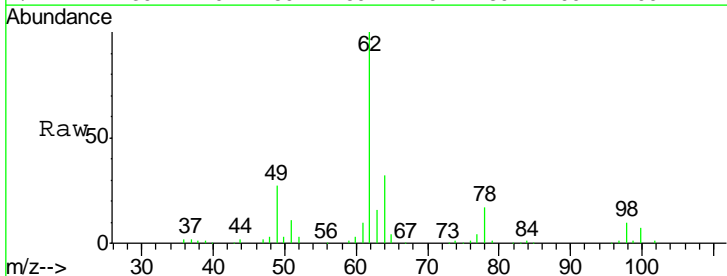
Instrument : MSVOA\_V  
 ClientSampled : VSTD00566

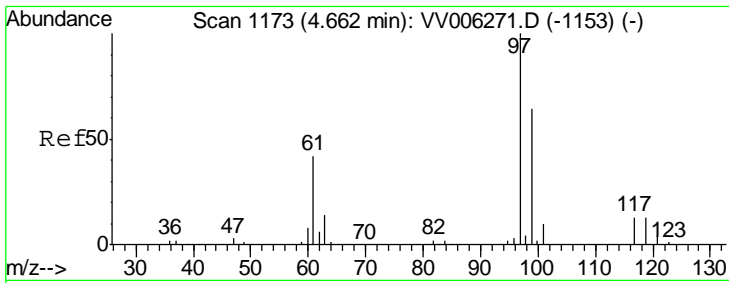
Tgt Ion	Resp	Lower	Upper
83	170094		
85	64.3	46.2	85.8



#27  
 1,2-Dichloroethane  
 Concen: 4.884 ug/L  
 RT: 5.19 min Scan# 1337  
 Delta R.T. -0.00 min  
 Lab File: VV006290.D  
 Acq: 15 Jun 2018 19:14

Tgt Ion	Resp	Lower	Upper
62	96977		
98	10.4	8.6	12.8

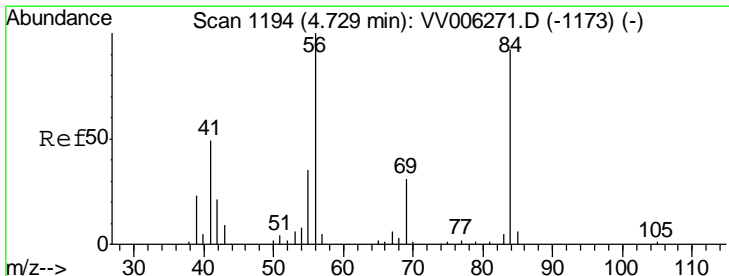
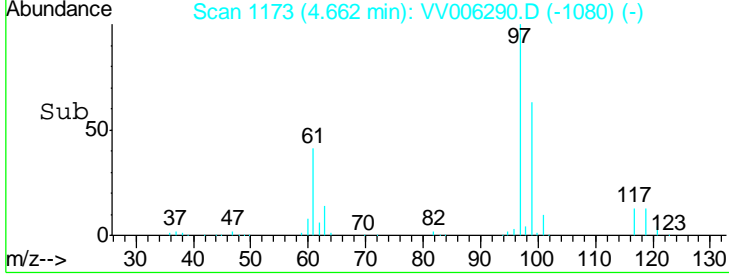
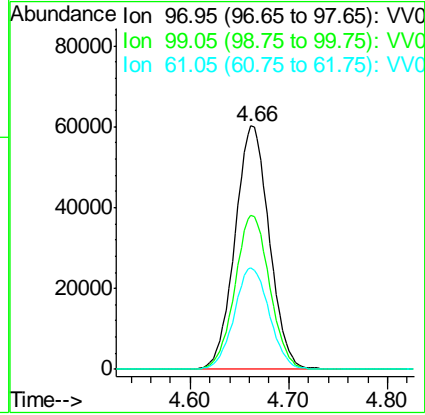
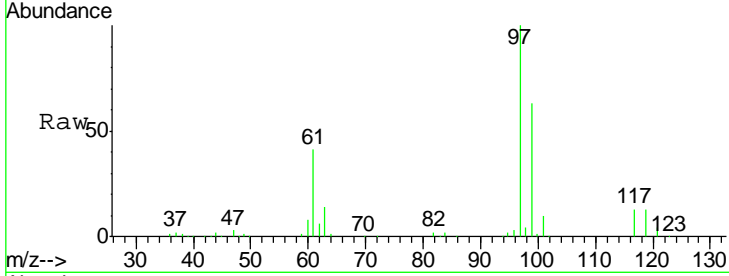




#29  
 1,1,1-Trichloroethane  
 Concen: 4.558 ug/L  
 RT: 4.66 min Scan# 1173  
 Delta R.T. -0.00 min  
 Lab File: VV006290.D  
 Acq: 15 Jun 2018 19:14

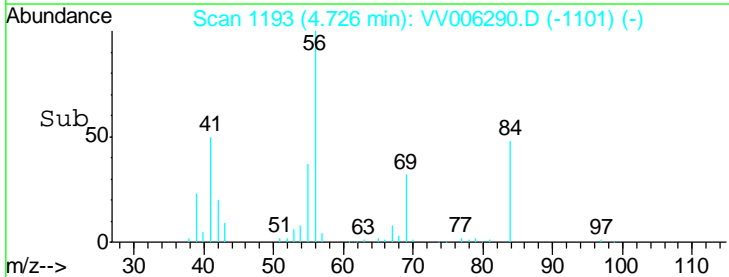
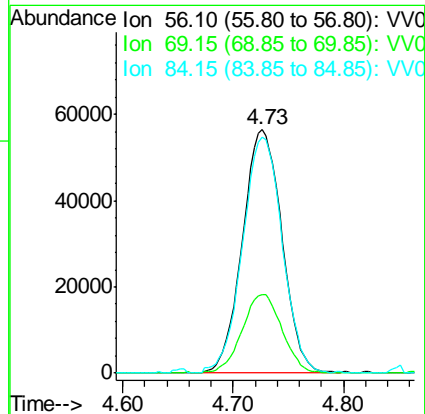
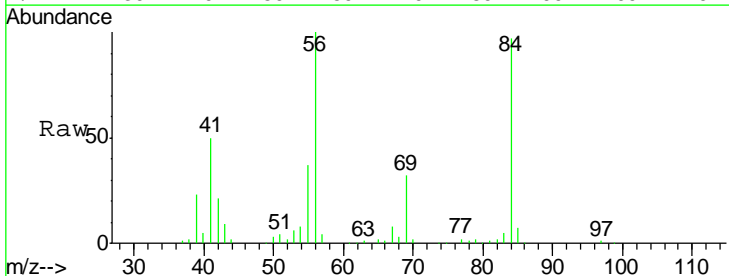
Instrument : MSVOA\_V  
 ClientSampled : VSTD00566

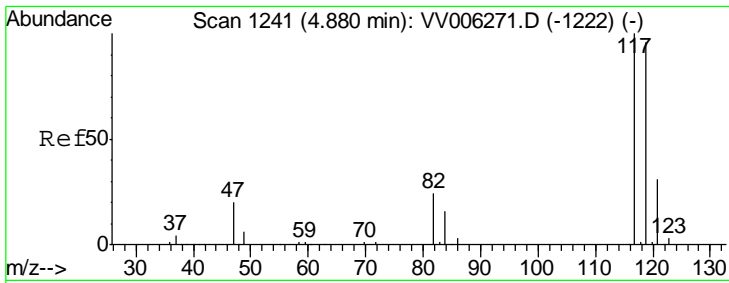
Tgt Ion	Resp	Lower	Upper
97	145390		
99	63.9	51.5	77.3
61	42.7	33.7	50.5



#30  
 Cyclohexane  
 Concen: 4.270 ug/L  
 RT: 4.73 min Scan# 1193  
 Delta R.T. -0.00 min  
 Lab File: VV006290.D  
 Acq: 15 Jun 2018 19:14

Tgt Ion	Resp	Lower	Upper
56	140088		
69	32.7	26.4	39.6
84	97.5	78.9	118.3

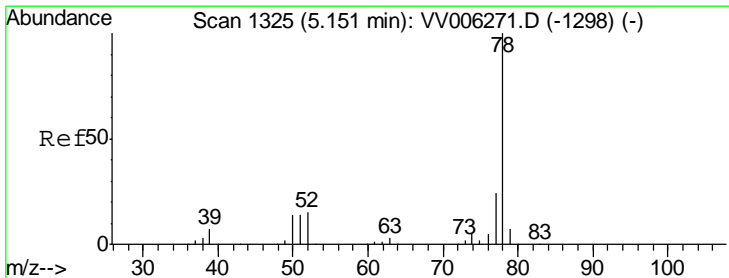
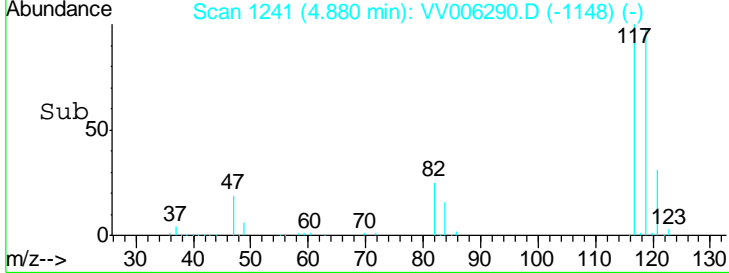
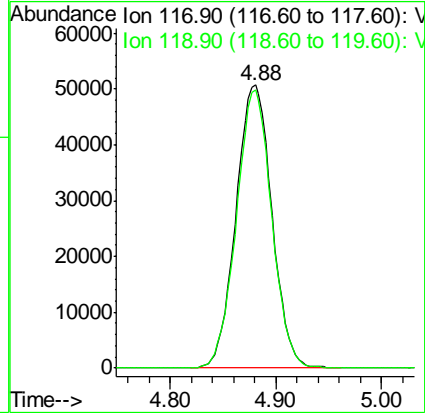
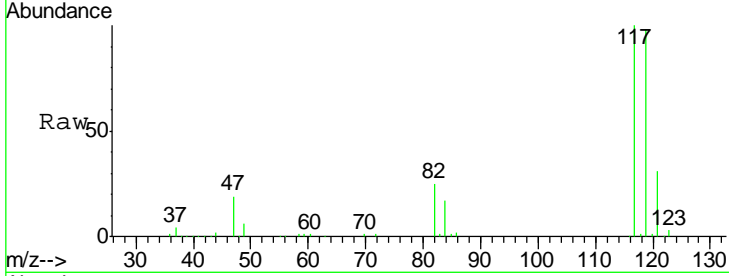




#31  
 Carbon tetrachloride  
 Concen: 4.264 ug/L  
 RT: 4.88 min Scan# 1241  
 Delta R.T. -0.00 min  
 Lab File: VV006290.D  
 Acq: 15 Jun 2018 19:14

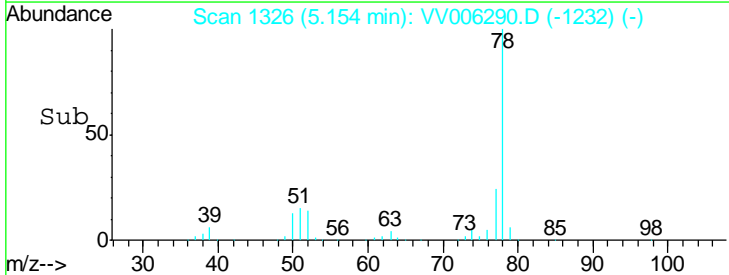
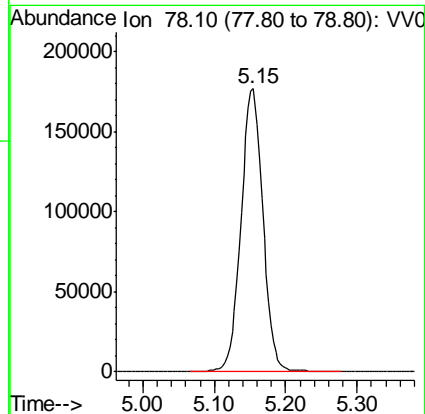
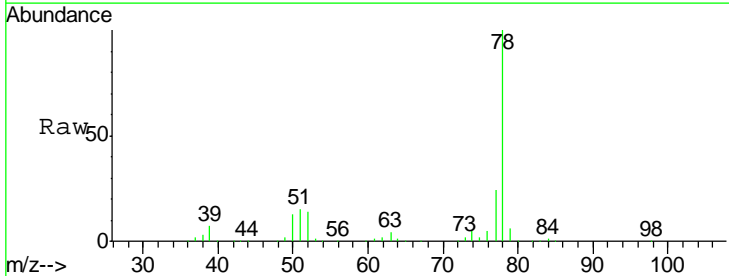
Instrument :  
 MSVOA\_V  
 ClientSampled :  
 VSTD00566

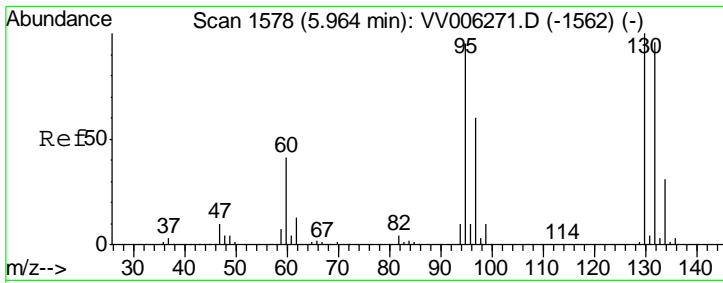
Tgt Ion: 117 Resp: 119954  
 Ion Ratio Lower Upper  
 117 100  
 119 96.5 76.1 114.1



#33  
 Benzene  
 Concen: 4.803 ug/L  
 RT: 5.15 min Scan# 1326  
 Delta R.T. 0.00 min  
 Lab File: VV006290.D  
 Acq: 15 Jun 2018 19:14

Tgt Ion: 78 Resp: 382349



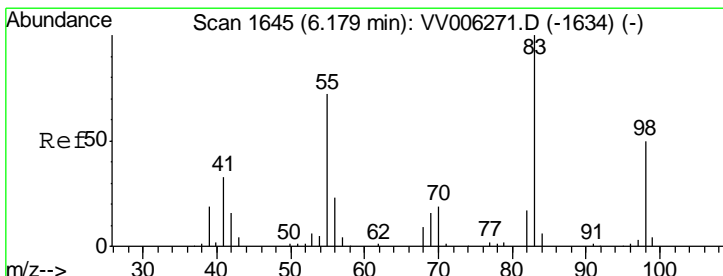
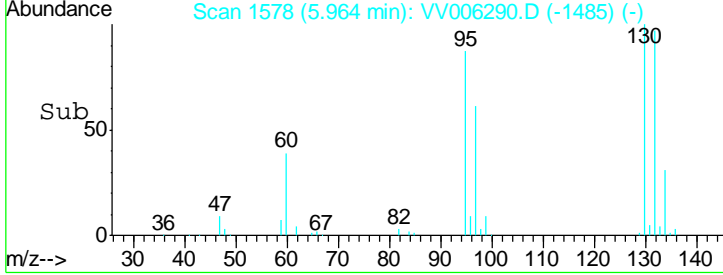
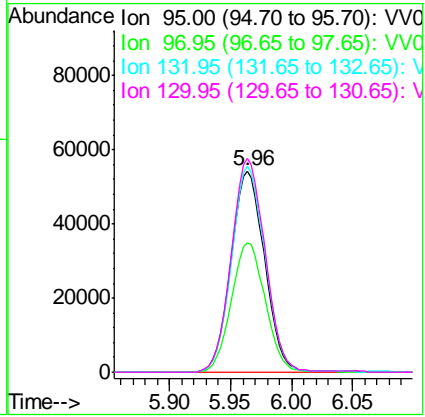
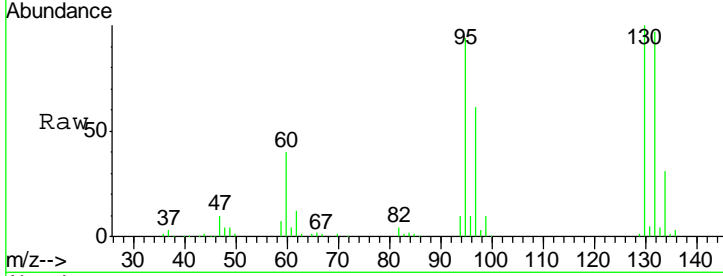


#34  
 Trichloroethene  
 Concen: 4.791 ug/L  
 RT: 5.96 min Scan# 1578  
 Delta R.T. -0.00 min  
 Lab File: VV006290.D  
 Acq: 15 Jun 2018 19:14

Instrument : MSVOA\_V  
 ClientSampled : VSTD00566

Tgt Ion: 95 Resp: 104101

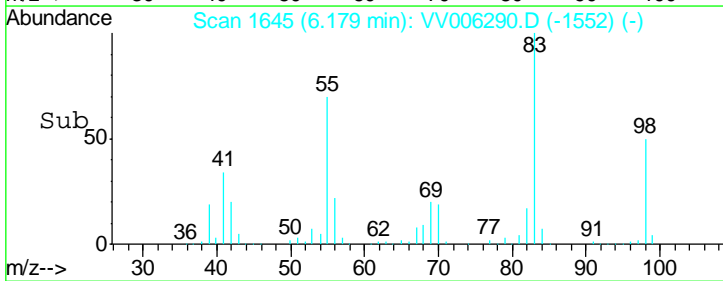
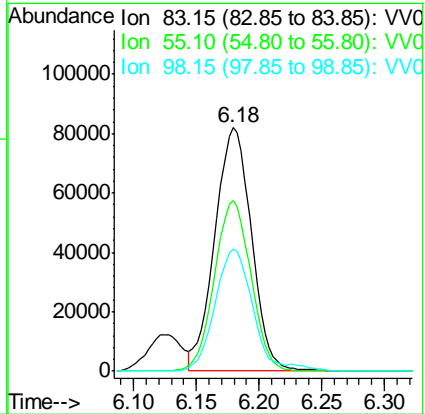
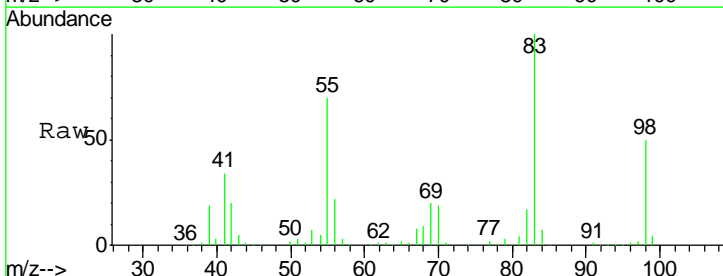
Ion	Ratio	Lower	Upper
95	100		
97	64.5	45.1	83.9
132	102.7	69.0	128.1
130	106.1	72.8	135.2



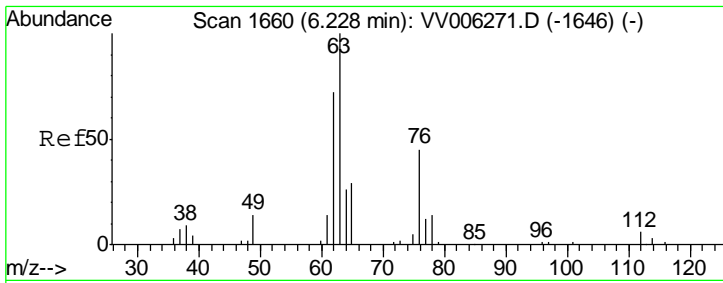
#35  
 Methylcyclohexane  
 Concen: 4.443 ug/L  
 RT: 6.18 min Scan# 1645  
 Delta R.T. -0.00 min  
 Lab File: VV006290.D  
 Acq: 15 Jun 2018 19:14

Tgt Ion: 83 Resp: 165921

Ion	Ratio	Lower	Upper
83	100		
55	69.9	57.5	86.3
98	50.3	39.8	59.8



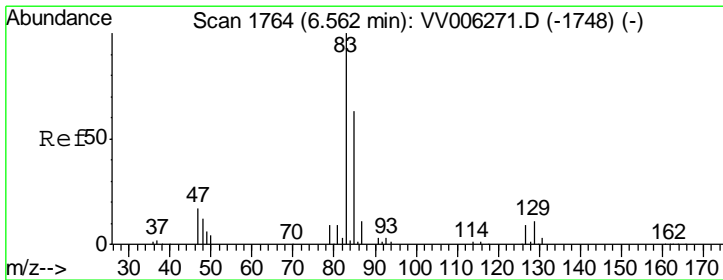
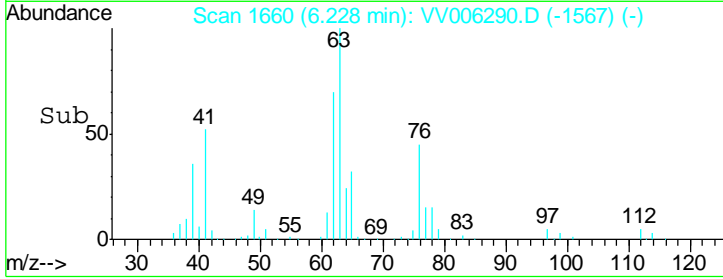
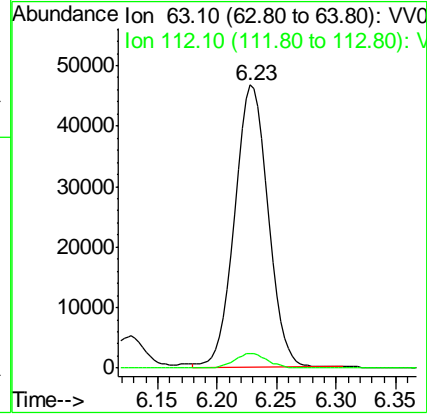
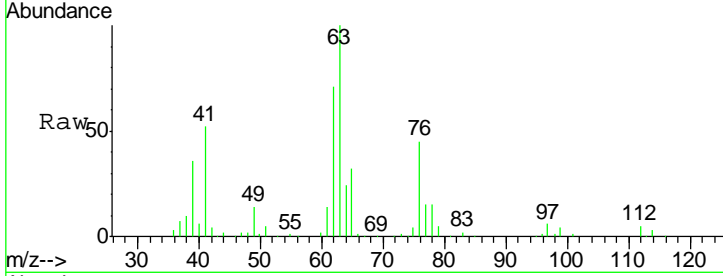




#37  
 1,2-Dichloropropane  
 Concen: 4.782 ug/L  
 RT: 6.23 min Scan# 1660  
 Delta R.T. -0.00 min  
 Lab File: VV006290.D  
 Acq: 15 Jun 2018 19:14

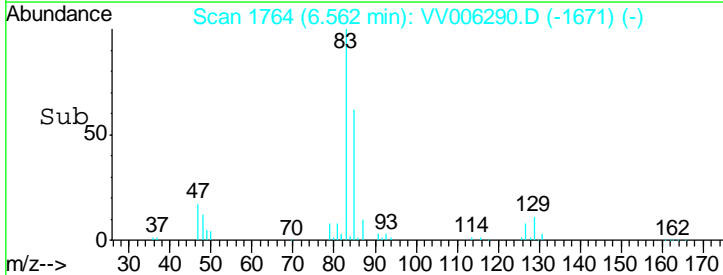
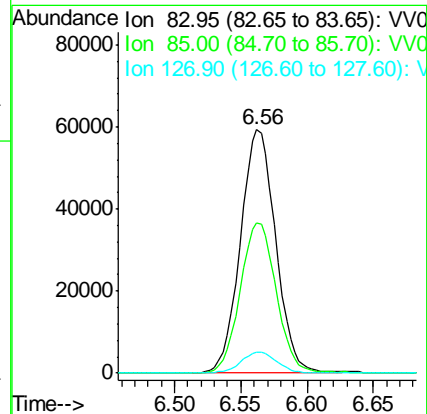
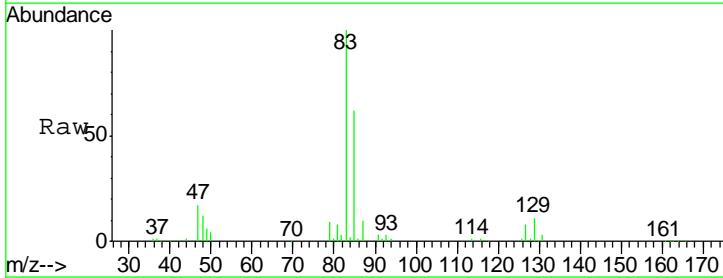
Instrument :  
 MSVOA\_V  
 ClientSampled :  
 VSTD00566

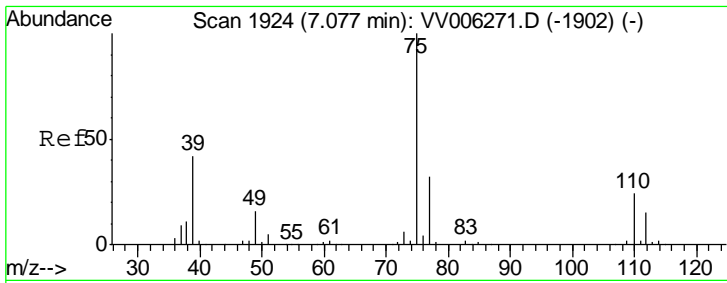
Tgt Ion: 63 Resp: 91197  
 Ion Ratio Lower Upper  
 63 100  
 112 5.0 4.1 6.1



#38  
 Bromodichloromethane  
 Concen: 4.324 ug/L  
 RT: 6.56 min Scan# 1764  
 Delta R.T. -0.00 min  
 Lab File: VV006290.D  
 Acq: 15 Jun 2018 19:14

Tgt Ion: 83 Resp: 109796  
 Ion Ratio Lower Upper  
 83 100  
 85 61.8 44.9 83.5  
 127 8.4 7.0 10.4

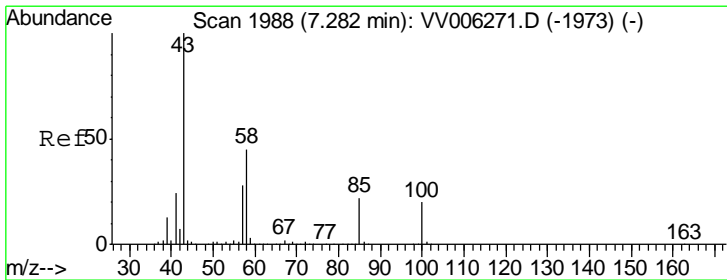
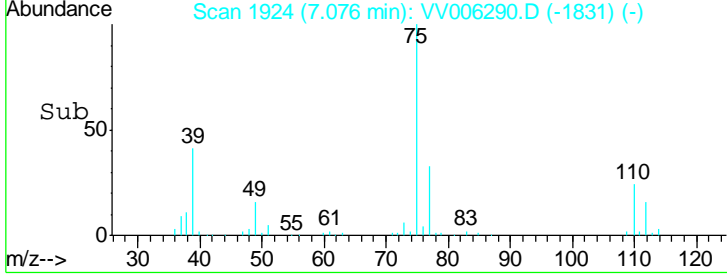
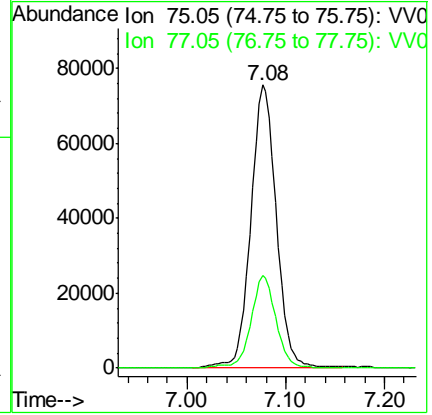
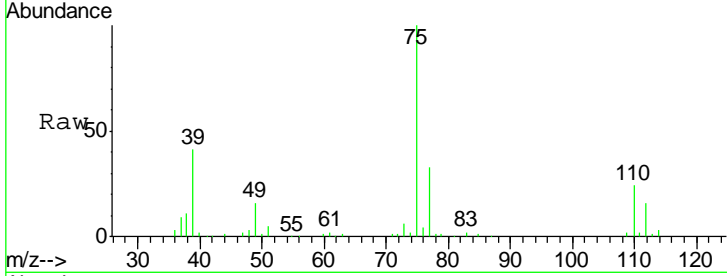




#39  
 cis-1,3-Dichloropropene  
 Concen: 4.342 ug/L  
 RT: 7.08 min Scan# 1924  
 Delta R.T. -0.00 min  
 Lab File: VV006290.D  
 Acq: 15 Jun 2018 19:14

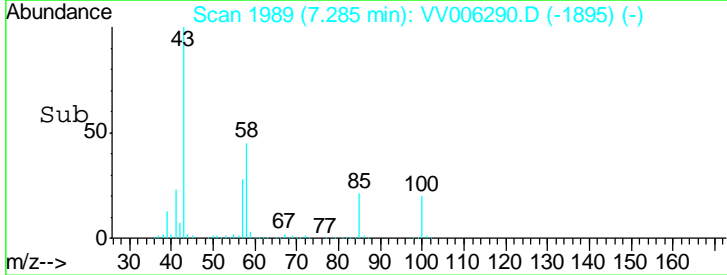
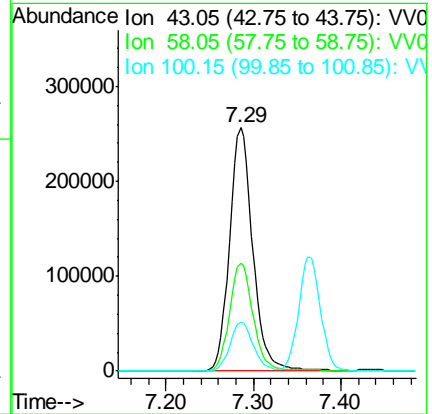
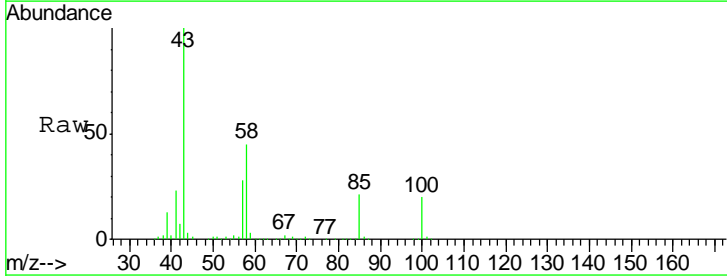
Instrument : MSVOA\_V  
 ClientSampled : VSTD00566

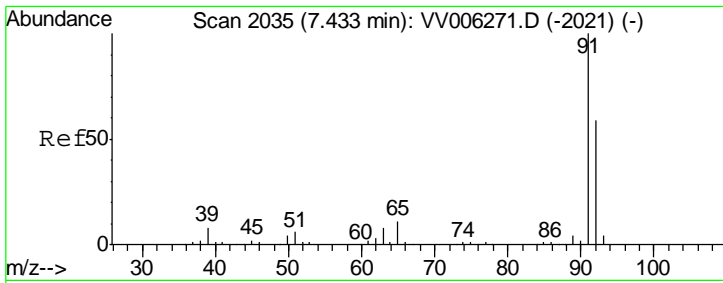
Tgt Ion	Resp	Lower	Upper
75	134950		
77	32.6	22.5	41.7



#40  
 4-Methyl-2-pentanone  
 Concen: 47.961 ug/L  
 RT: 7.29 min Scan# 1989  
 Delta R.T. 0.00 min  
 Lab File: VV006290.D  
 Acq: 15 Jun 2018 19:14

Tgt Ion	Resp	Lower	Upper
43	473051		
58	44.7	36.0	54.0
100	20.1	15.4	23.2

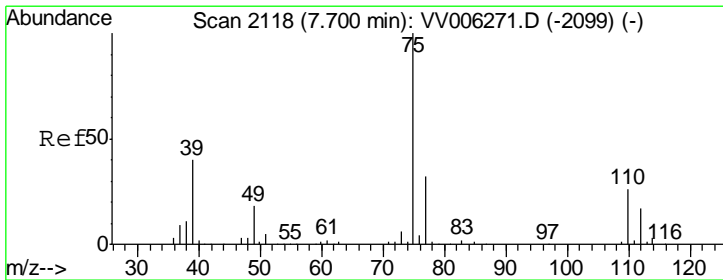
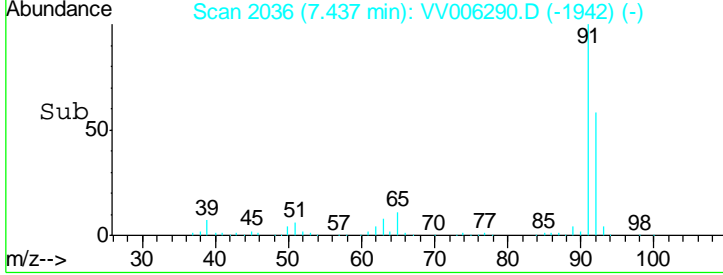
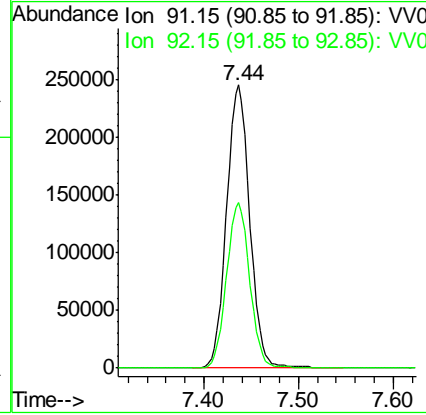
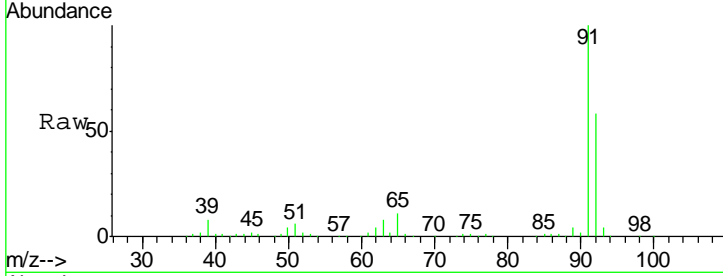




#42  
 Toluene  
 Concen: 4.756 ug/L  
 RT: 7.44 min Scan# 2036  
 Delta R.T. 0.00 min  
 Lab File: VV006290.D  
 Acq: 15 Jun 2018 19:14

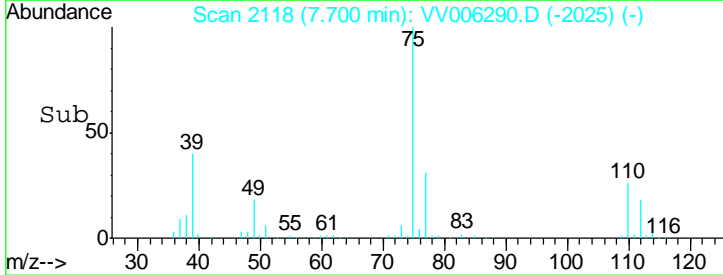
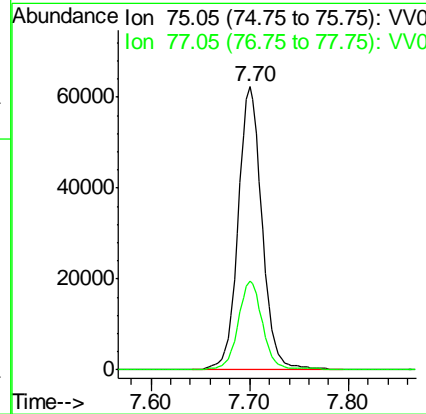
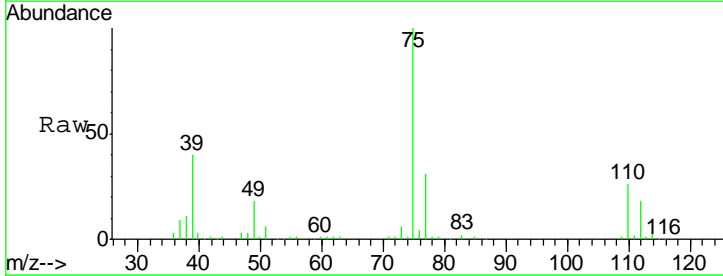
Instrument : MSVOA\_V  
 ClientSampled : VSTD00566

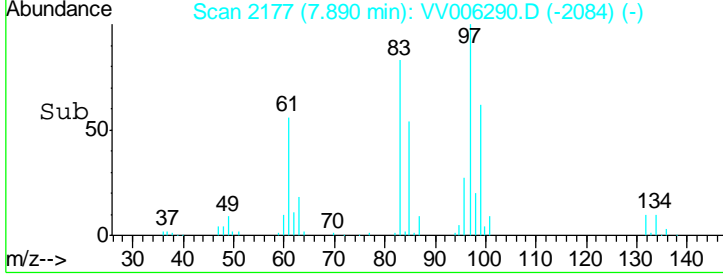
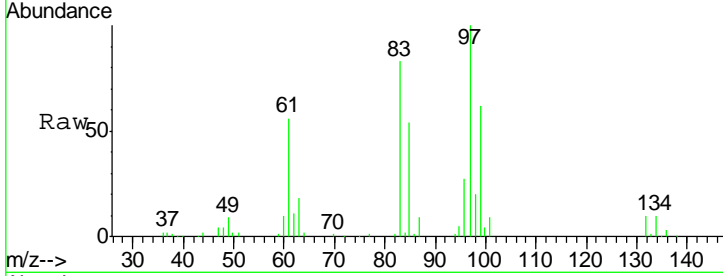
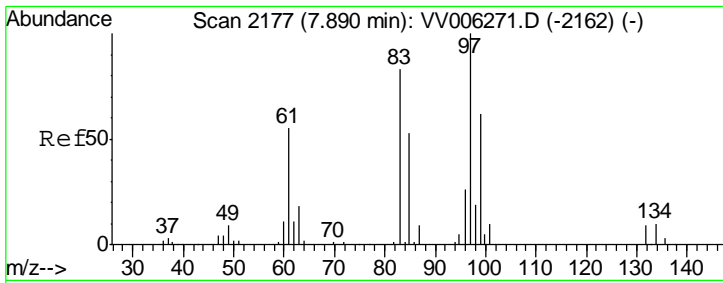
Tgt Ion: 91 Resp: 417885  
 Ion Ratio Lower Upper  
 91 100  
 92 58.4 41.1 76.3



#44  
 trans-1,3-Dichloropropene  
 Concen: 4.167 ug/L  
 RT: 7.70 min Scan# 2118  
 Delta R.T. -0.00 min  
 Lab File: VV006290.D  
 Acq: 15 Jun 2018 19:14

Tgt Ion: 75 Resp: 105063  
 Ion Ratio Lower Upper  
 75 100  
 77 31.4 23.0 42.6

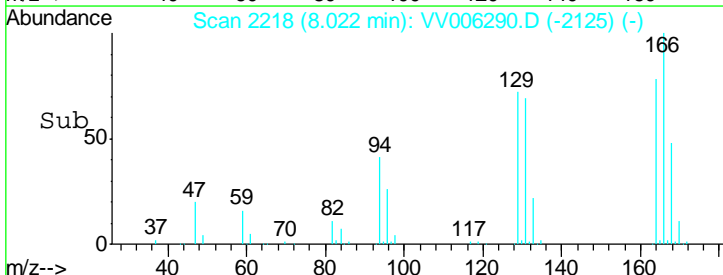
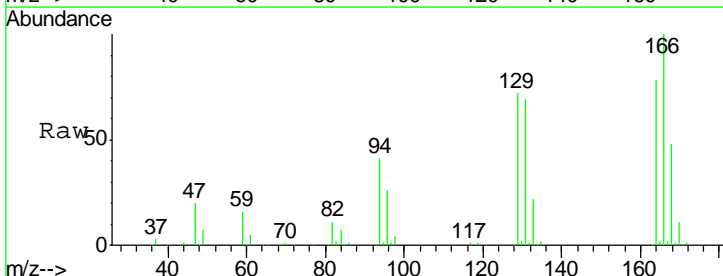
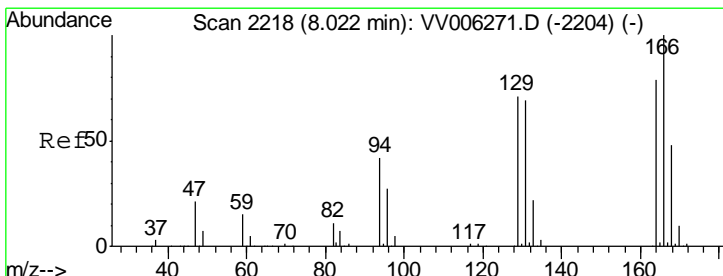
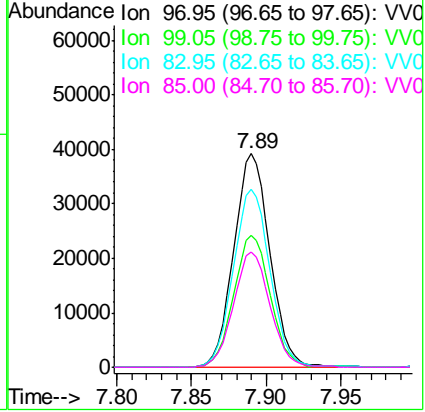




#45  
 1,1,2-Trichloroethane  
 Concen: 4.902 ug/L  
 RT: 7.89 min Scan# 2177  
 Delta R.T. -0.00 min  
 Lab File: VV006290.D  
 Acq: 15 Jun 2018 19:14

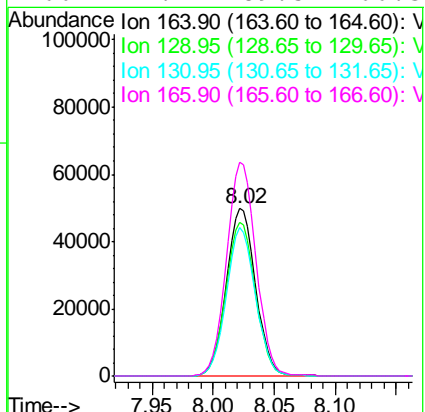
Instrument :  
 MSVOA\_V  
 ClientSampled :  
 VSTD00566

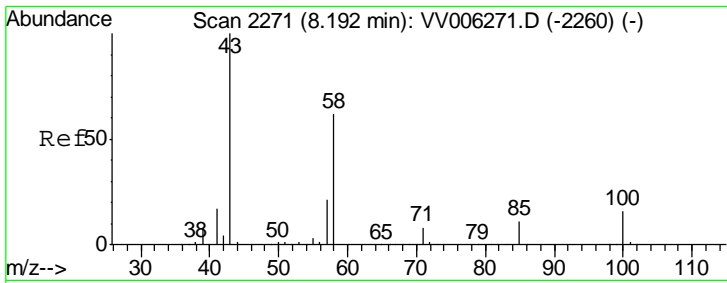
Tgt Ion	Resp	Lower	Upper
97	66164		
99	61.9	43.8	81.3
83	83.4	58.2	108.2
85	53.8	39.3	73.1



#47  
 Tetrachloroethene  
 Concen: 4.826 ug/L  
 RT: 8.02 min Scan# 2218  
 Delta R.T. -0.00 min  
 Lab File: VV006290.D  
 Acq: 15 Jun 2018 19:14

Tgt Ion	Resp	Lower	Upper
164	83918		
129	92.2	62.7	116.5
131	88.4	61.0	113.2
166	127.7	89.5	166.3



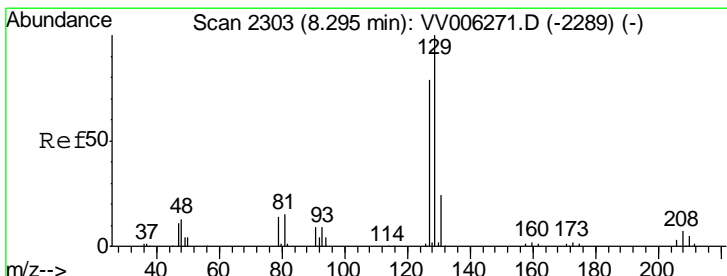
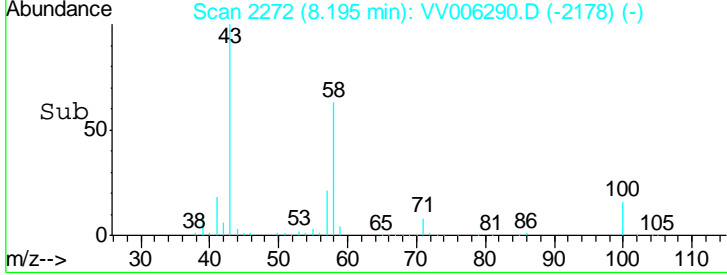
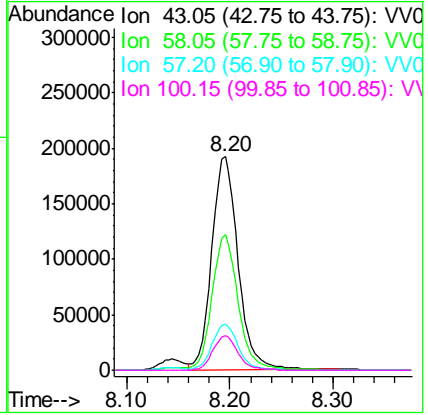
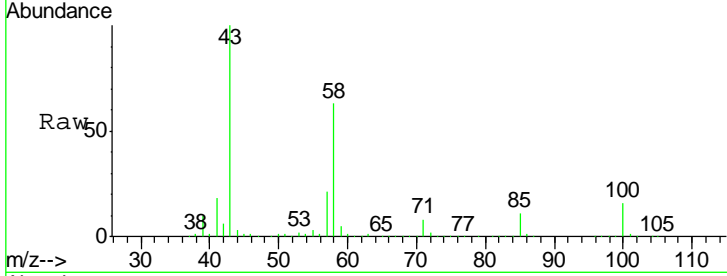


#48  
 2-Hexanone  
 Concen: 49.151 ug/L  
 RT: 8.20 min Scan# 2272  
 Delta R.T. 0.00 min  
 Lab File: VV006290.D  
 Acq: 15 Jun 2018 19:14

Instrument :  
 MSVOA\_V  
 ClientSampled :  
 VSTD00566

Tgt Ion: 43 Resp: 340715

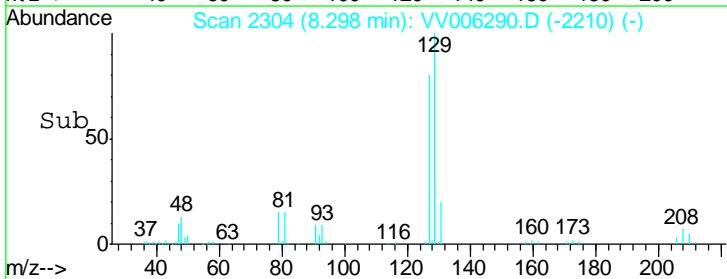
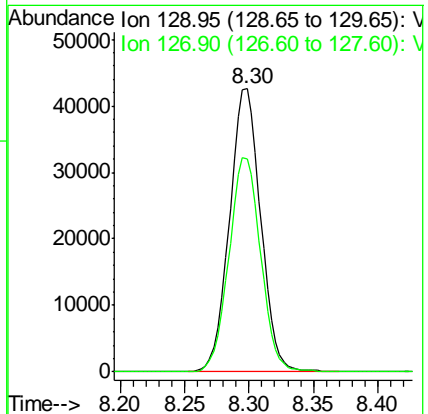
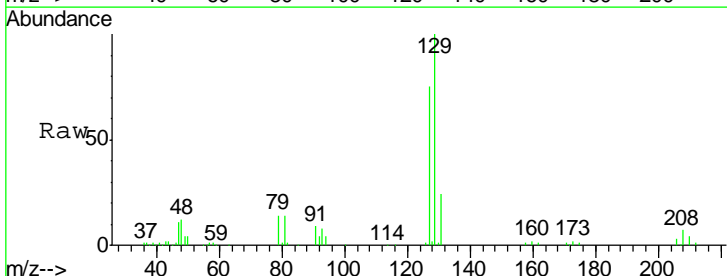
Ion	Ratio	Lower	Upper
43	100		
58	62.7	48.6	72.8
57	21.6	17.5	26.3
100	15.7	12.6	18.8

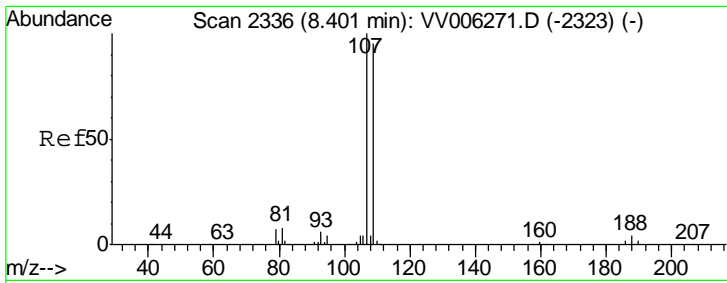


#49  
 Dibromochloromethane  
 Concen: 4.212 ug/L  
 RT: 8.30 min Scan# 2304  
 Delta R.T. 0.00 min  
 Lab File: VV006290.D  
 Acq: 15 Jun 2018 19:14

Tgt Ion: 129 Resp: 71581

Ion	Ratio	Lower	Upper
129	100		
127	75.3	55.2	102.4

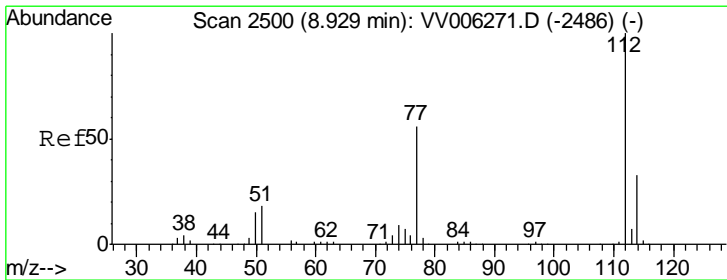
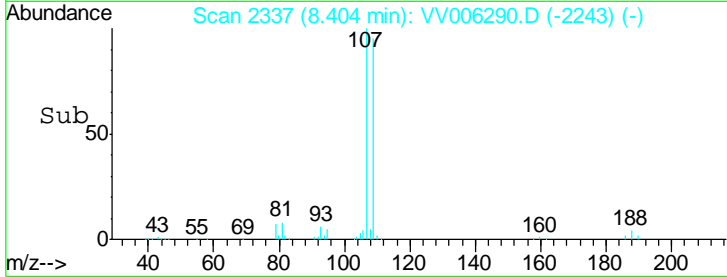
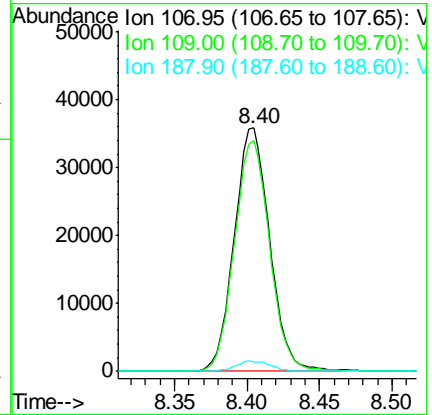
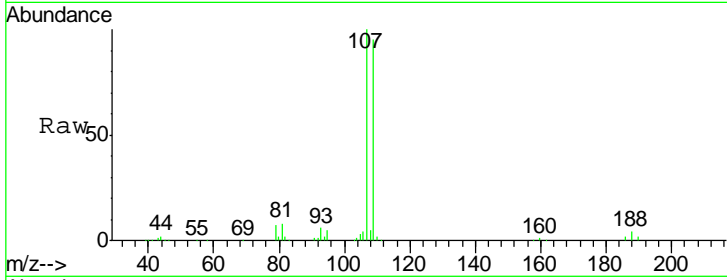




#50  
 1,2-Dibromoethane  
 Concen: 4.831 ug/L  
 RT: 8.40 min Scan# 2337  
 Delta R.T. 0.00 min  
 Lab File: VV006290.D  
 Acq: 15 Jun 2018 19:14

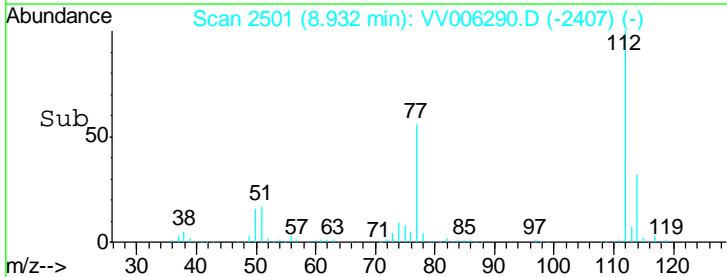
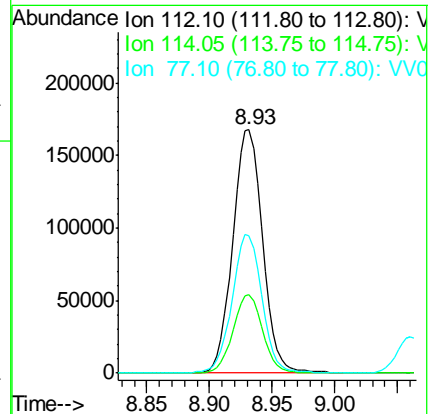
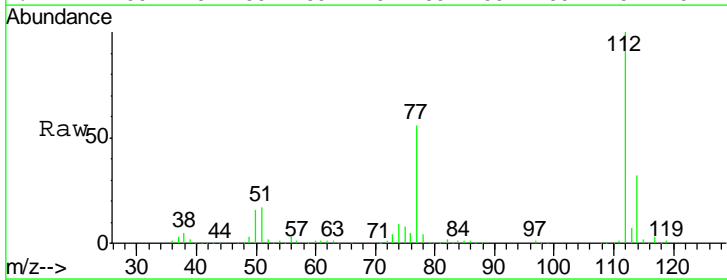
Instrument :  
 MSVOA\_V  
 ClientSampleID :  
 VSTD00566

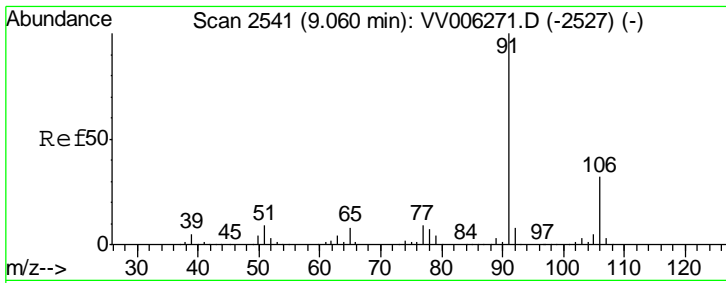
Tgt Ion	Resp	Lower	Upper
107	60751		
109	94.8	66.8	124.2
188	4.1	3.4	5.0



#51  
 Chlorobenzene  
 Concen: 4.936 ug/L  
 RT: 8.93 min Scan# 2501  
 Delta R.T. 0.00 min  
 Lab File: VV006290.D  
 Acq: 15 Jun 2018 19:14

Tgt Ion	Resp	Lower	Upper
112	278434		
114	32.1	22.2	41.2
77	56.2	45.2	67.8

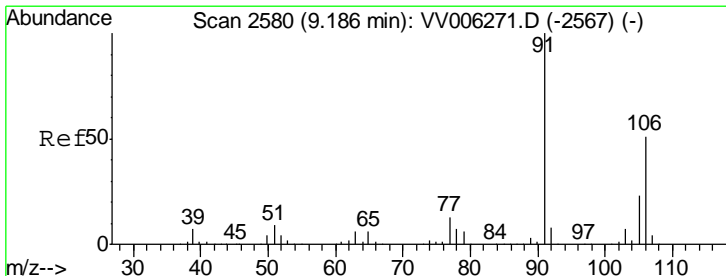
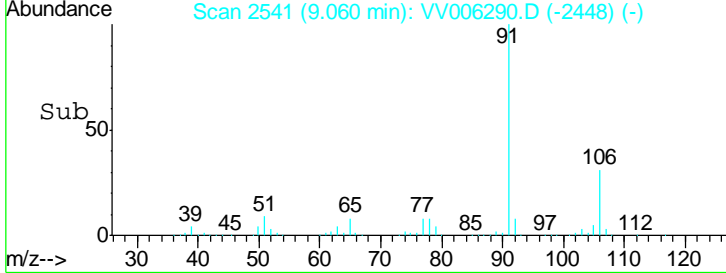
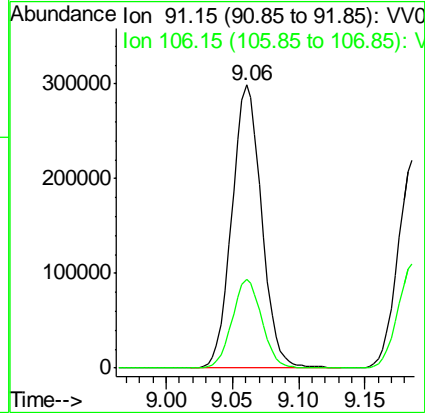
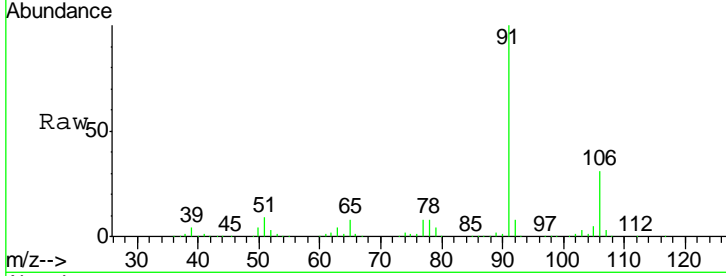




#52  
 Ethylbenzene  
 Concen: 4.756 ug/L  
 RT: 9.06 min Scan# 2541  
 Delta R.T. -0.00 min  
 Lab File: VV006290.D  
 Acq: 15 Jun 2018 19:14

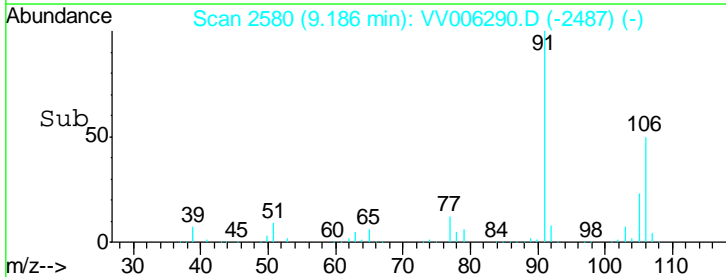
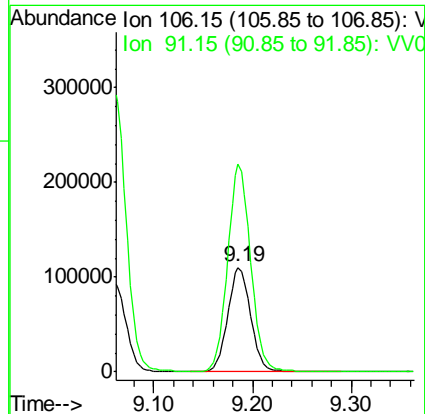
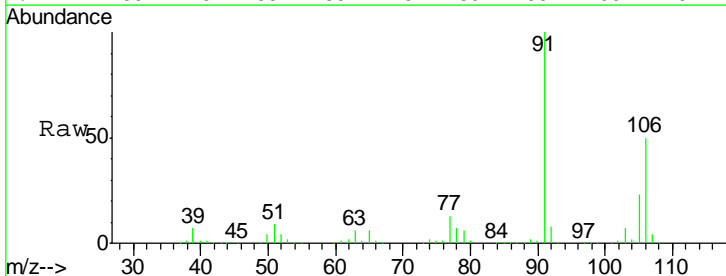
Instrument : MSVOA\_V  
 ClientSampled : VSTD00566

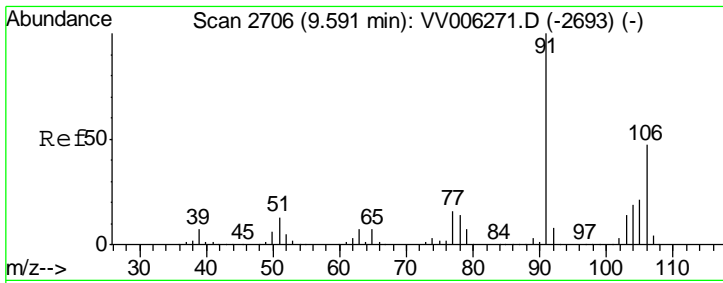
Tgt Ion: 91 Resp: 46540  
 Ion Ratio Lower Upper  
 91 100  
 106 31.4 21.9 40.7



#53  
 m,p-xylene  
 Concen: 4.713 ug/L  
 RT: 9.19 min Scan# 2580  
 Delta R.T. -0.00 min  
 Lab File: VV006290.D  
 Acq: 15 Jun 2018 19:14

Tgt Ion: 106 Resp: 179973  
 Ion Ratio Lower Upper  
 106 100  
 91 198.5 139.7 259.4

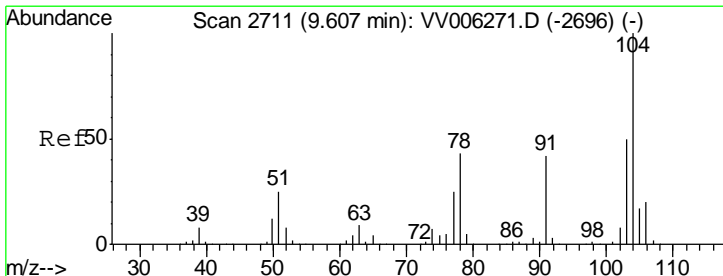
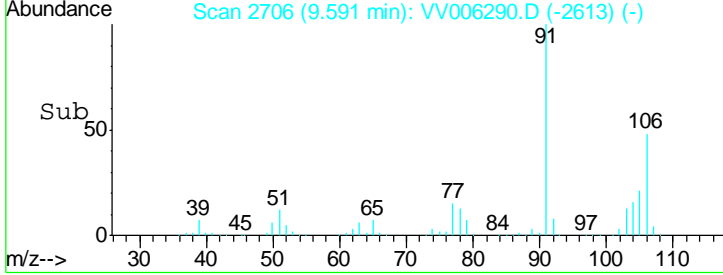
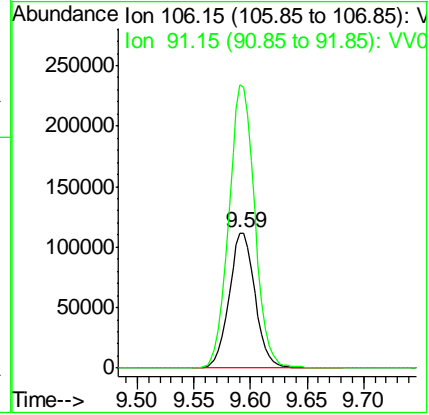
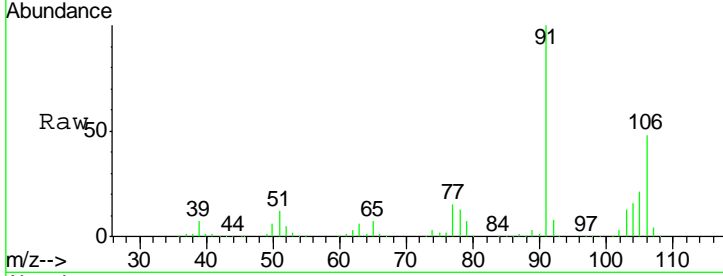




#54  
 o-xylene  
 Concen: 4.774 ug/L  
 RT: 9.59 min Scan# 2706  
 Delta R.T. -0.00 min  
 Lab File: VV006290.D  
 Acq: 15 Jun 2018 19:14

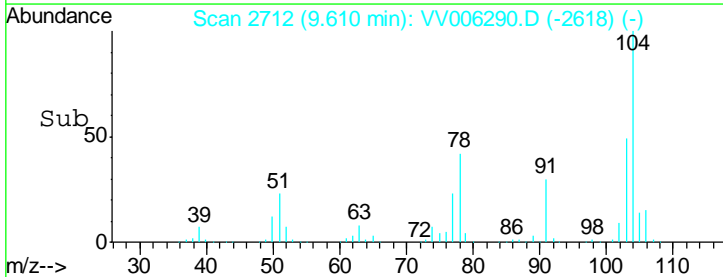
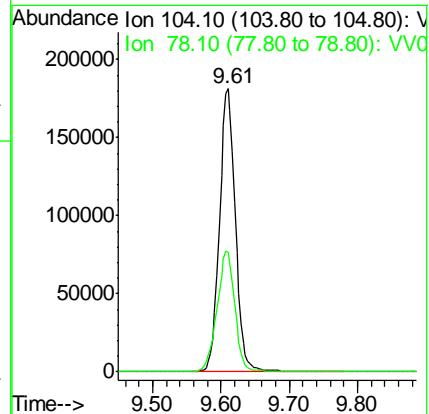
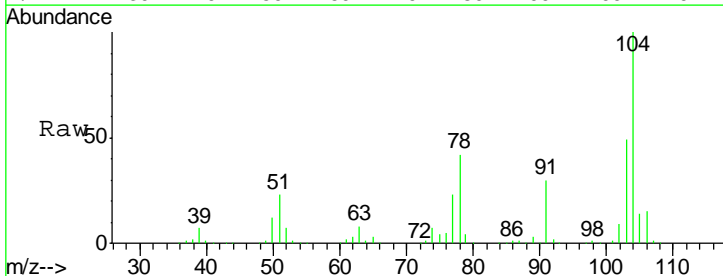
Instrument : MSVOA\_V  
 ClientSampled : VSTD00566

Tgt Ion:106 Resp: 178300  
 Ion Ratio Lower Upper  
 106 100  
 91 208.8 147.9 274.7

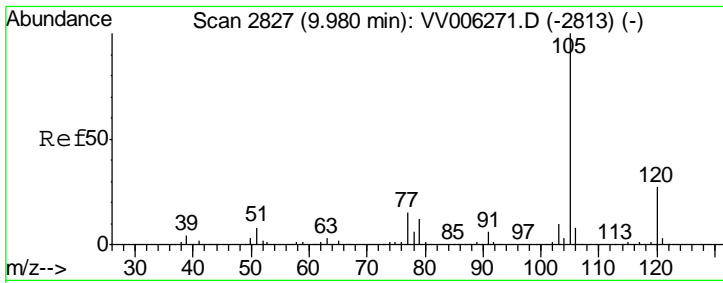


#55  
 Styrene  
 Concen: 4.800 ug/L  
 RT: 9.61 min Scan# 2712  
 Delta R.T. 0.00 min  
 Lab File: VV006290.D  
 Acq: 15 Jun 2018 19:14

Tgt Ion:104 Resp: 294859  
 Ion Ratio Lower Upper  
 104 100  
 78 42.4 30.6 56.8



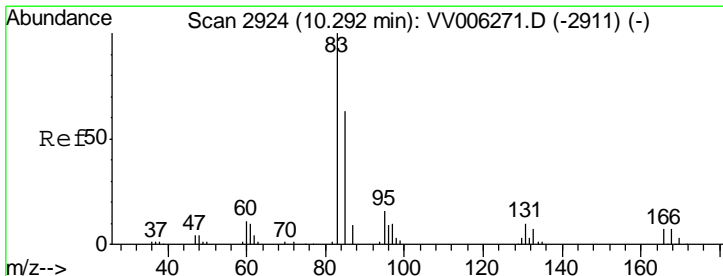
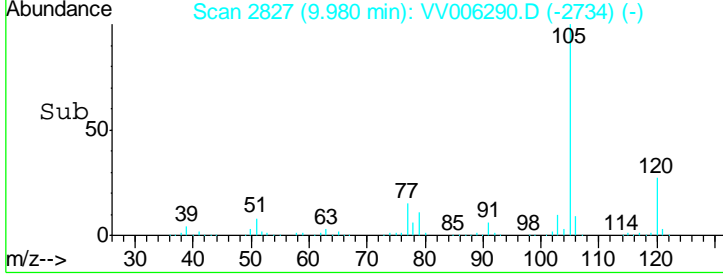
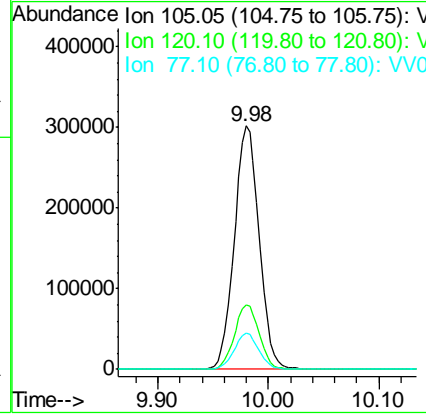
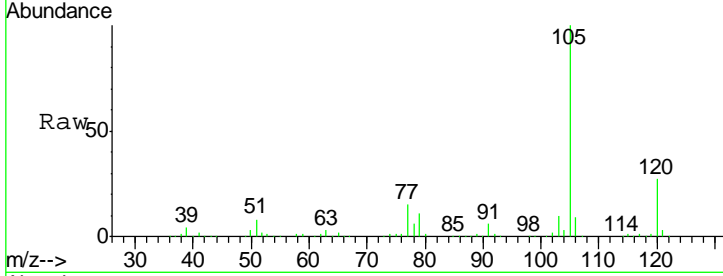




#56  
 Isopropylbenzene  
 Concen: 4.788 ug/L  
 RT: 9.98 min Scan# 2827  
 Delta R.T. -0.00 min  
 Lab File: VV006290.D  
 Acq: 15 Jun 2018 19:14

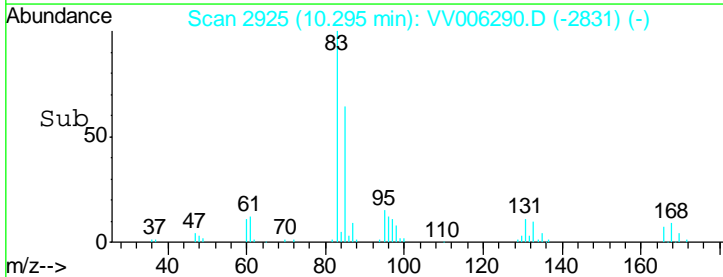
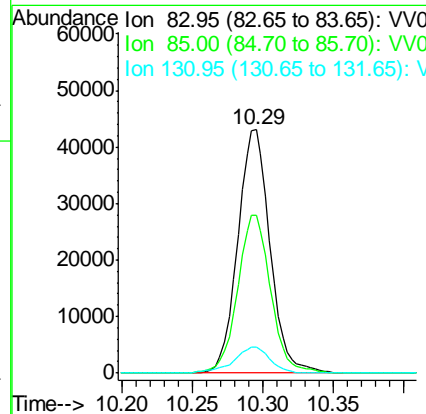
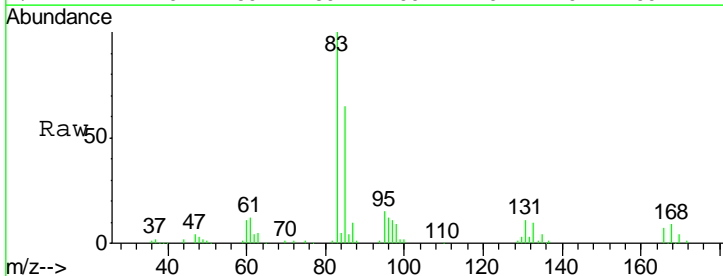
Instrument :  
 MSVOA\_V  
 ClientSampled :  
 VSTD00566

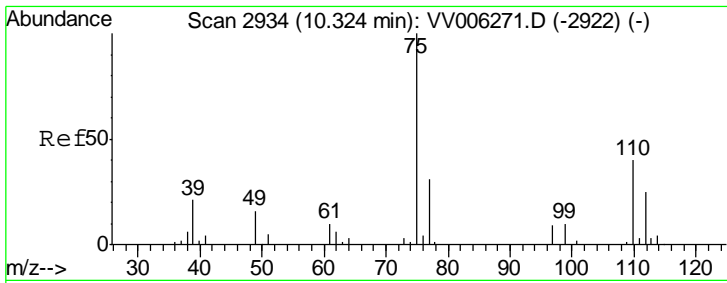
Tgt Ion	Resp	Lower	Upper
105	470858		
120	26.7	21.4	32.2
77	14.8	11.9	17.9



#58  
 1,1,2,2-Tetrachloroethane  
 Concen: 4.469 ug/L  
 RT: 10.29 min Scan# 2925  
 Delta R.T. 0.00 min  
 Lab File: VV006290.D  
 Acq: 15 Jun 2018 19:14

Tgt Ion	Resp	Lower	Upper
83	69084		
85	64.9	45.0	83.6
131	10.7	8.3	12.5

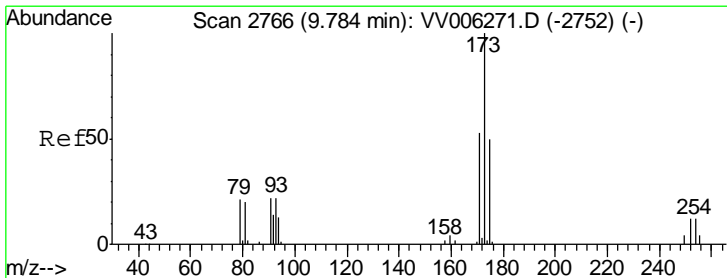
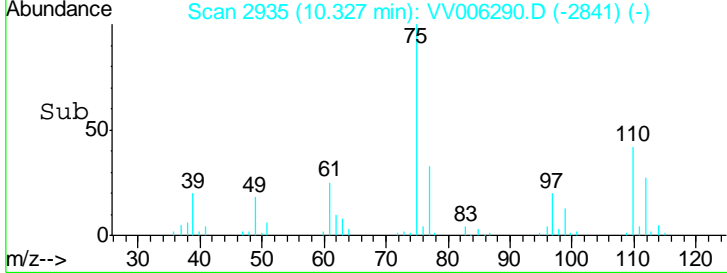
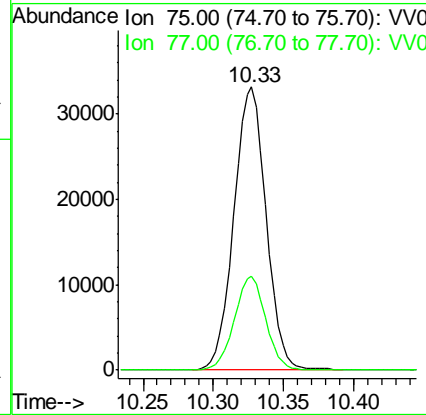
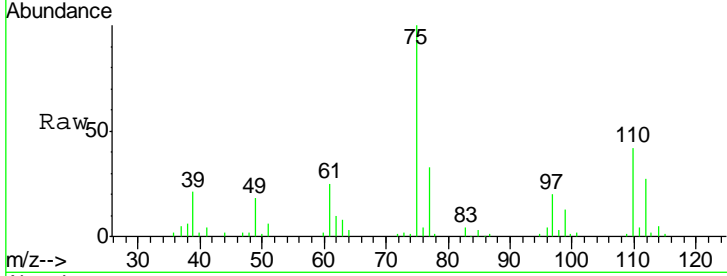




#59  
 1,2,3-Trichloropropane  
 Concen: 4.942 ug/L  
 RT: 10.33 min Scan# 2935  
 Delta R.T. 0.00 min  
 Lab File: VV006290.D  
 Acq: 15 Jun 2018 19:14

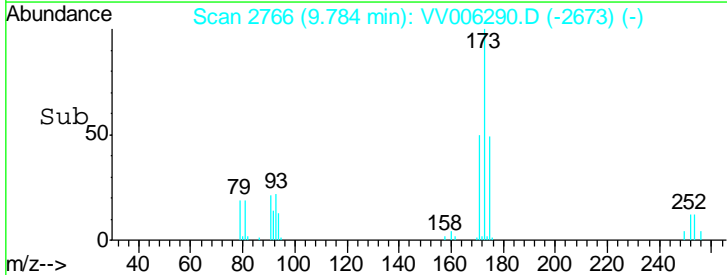
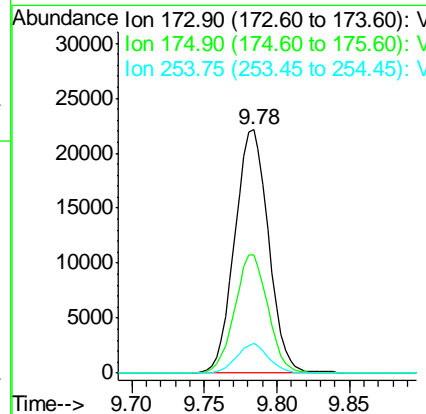
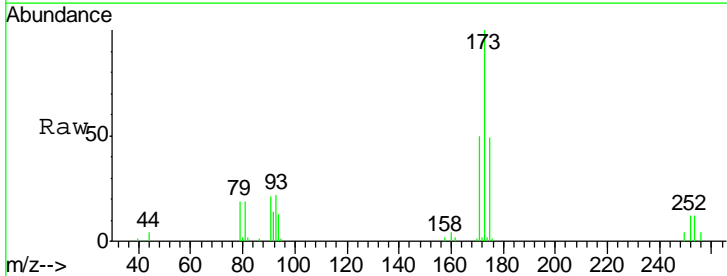
Instrument :  
 MSVOA\_V  
 ClientSampled :  
 VSTD00566

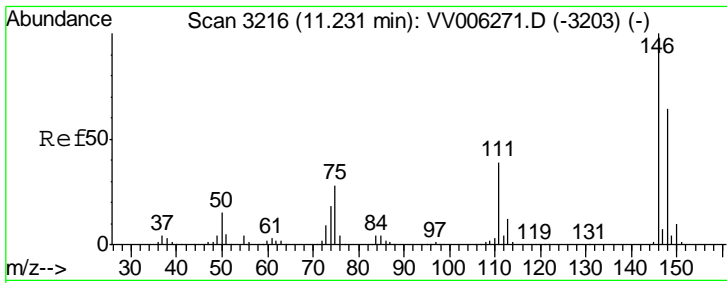
Tgt Ion: 75 Resp: 53096  
 Ion Ratio Lower Upper  
 75 100  
 77 32.2 25.7 38.5



#61  
 Bromoform  
 Concen: 3.754 ug/L  
 RT: 9.78 min Scan# 2766  
 Delta R.T. -0.00 min  
 Lab File: VV006290.D  
 Acq: 15 Jun 2018 19:14

Tgt Ion: 173 Resp: 35781  
 Ion Ratio Lower Upper  
 173 100  
 175 47.6 39.3 58.9  
 254 11.2 9.1 13.7

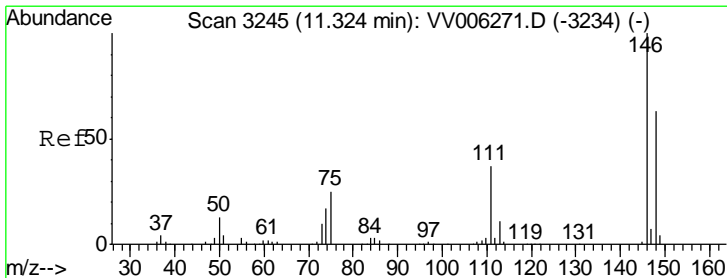
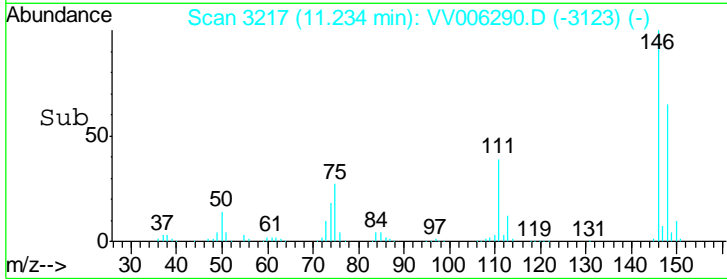
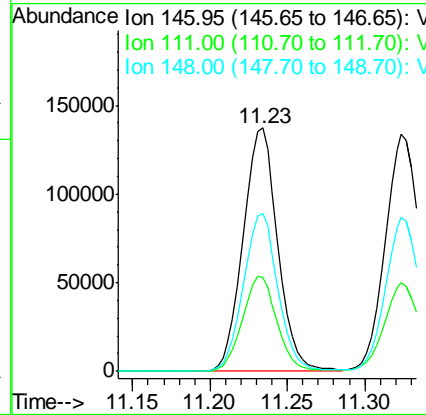
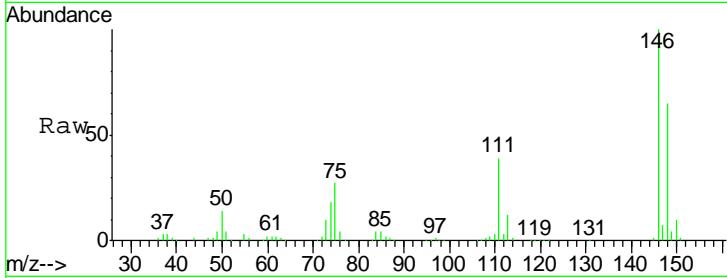




#62  
 1,3-Dichlorobenzene  
 Concen: 4.833 ug/L  
 RT: 11.23 min Scan# 3217  
 Delta R.T. 0.00 min  
 Lab File: VV006290.D  
 Acq: 15 Jun 2018 19:14

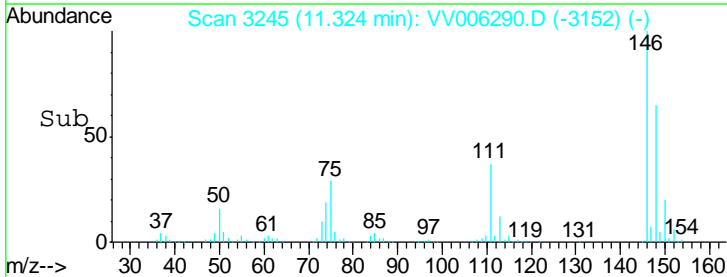
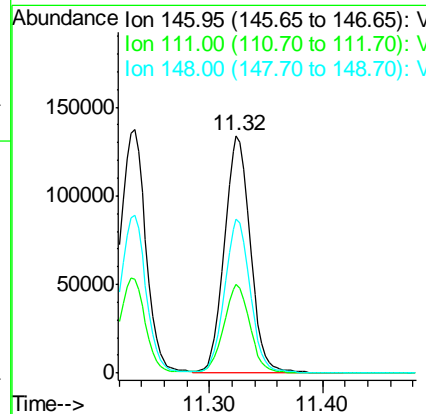
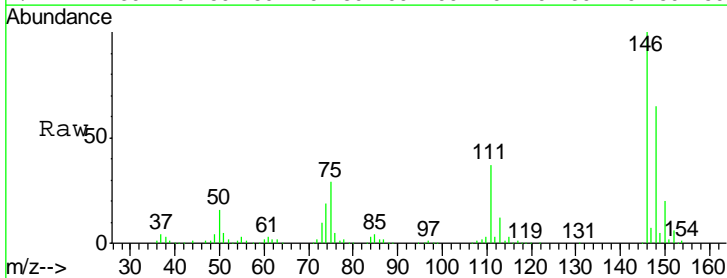
Instrument :  
 MSVOA\_V  
 ClientSampled :  
 VSTD00566

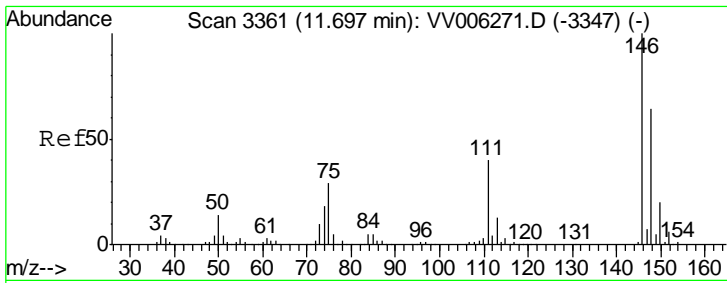
Tgt Ion	Resp	Lower	Upper
146	100		
111	38.6	27.6	51.2
148	64.7	45.1	83.7



#63  
 1,4-Dichlorobenzene  
 Concen: 4.888 ug/L  
 RT: 11.32 min Scan# 3245  
 Delta R.T. -0.00 min  
 Lab File: VV006290.D  
 Acq: 15 Jun 2018 19:14

Tgt Ion	Resp	Lower	Upper
146	100		
111	37.1	26.9	50.1
148	65.0	44.8	83.2

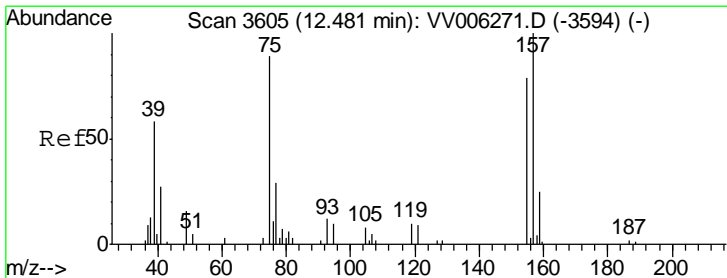
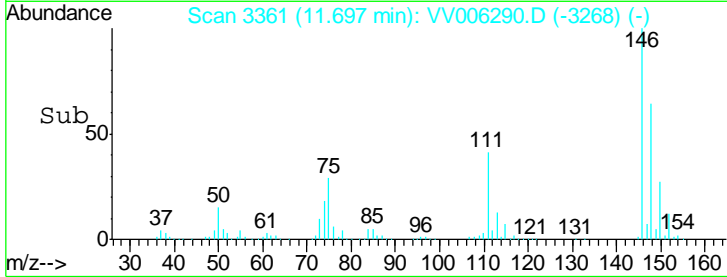
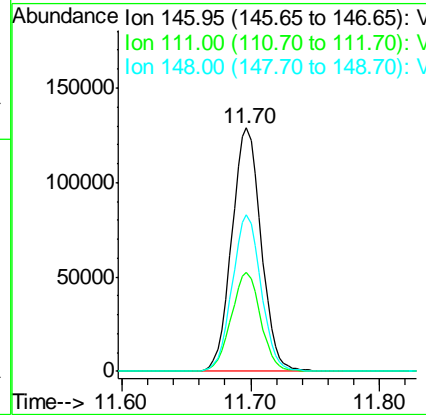
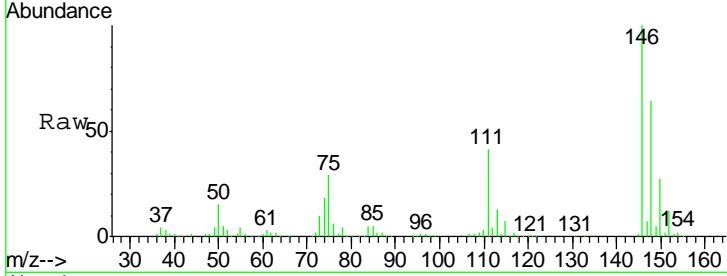




#65  
 1,2-Dichlorobenzene  
 Concen: 4.965 ug/L  
 RT: 11.70 min Scan# 3361  
 Delta R.T. -0.00 min  
 Lab File: VV006290.D  
 Acq: 15 Jun 2018 19:14

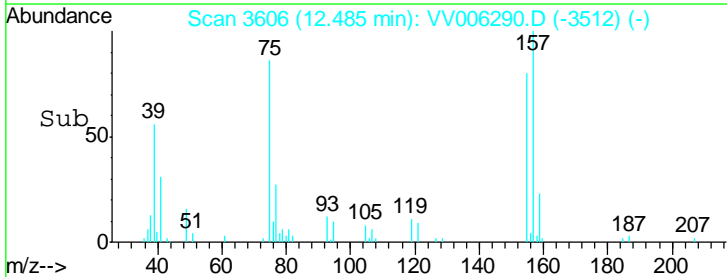
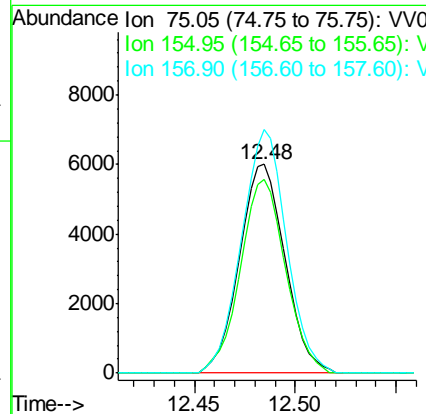
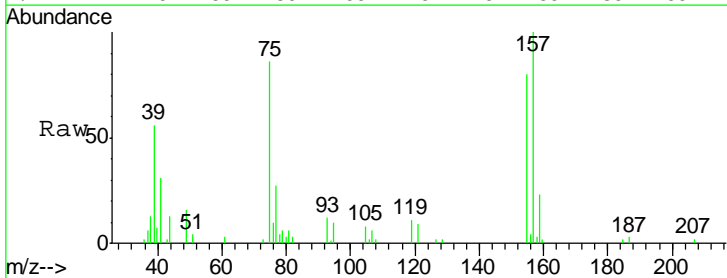
Instrument :  
 MSVOA\_V  
 ClientSampled :  
 VSTD00566

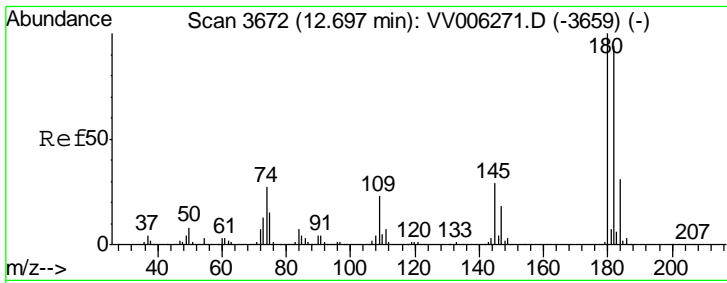
Tgt Ion	Resp	Lower	Upper
146	100		
111	40.5	32.8	49.2
148	64.1	51.4	77.2



#66  
 1,2-Dibromo-3-chloropropane  
 Concen: 3.554 ug/L  
 RT: 12.48 min Scan# 3606  
 Delta R.T. 0.00 min  
 Lab File: VV006290.D  
 Acq: 15 Jun 2018 19:14

Tgt Ion	Resp	Lower	Upper
75	100		
155	92.8	70.3	105.5
157	116.6	93.8	140.6



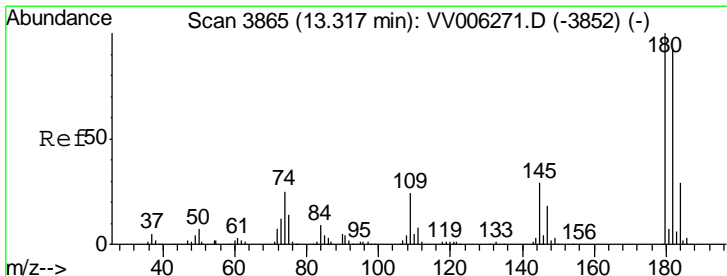
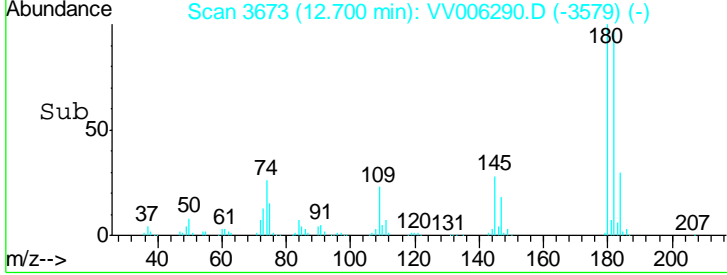
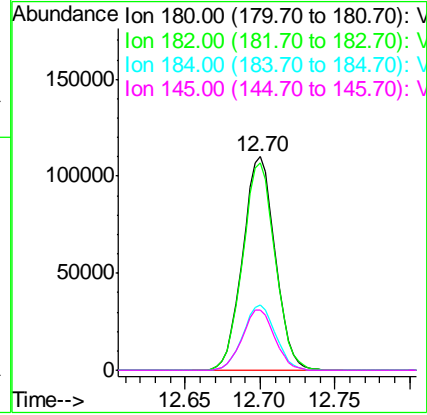
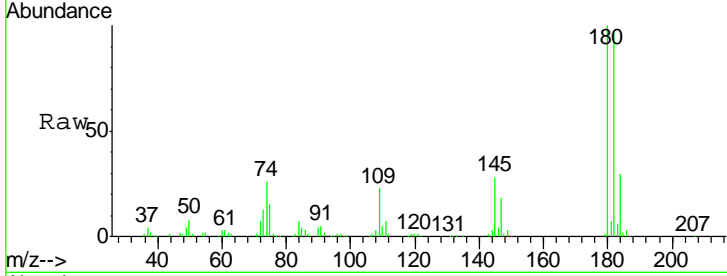


#67  
 1,3,5-Trichlorobenzene  
 Concen: 4.883 ug/L  
 RT: 12.70 min Scan# 3673  
 Delta R.T. 0.00 min  
 Lab File: VV006290.D  
 Acq: 15 Jun 2018 19:14

Instrument : MSVOA\_V  
 ClientSampled : VSTD00566

Tgt Ion:180 Resp: 166320

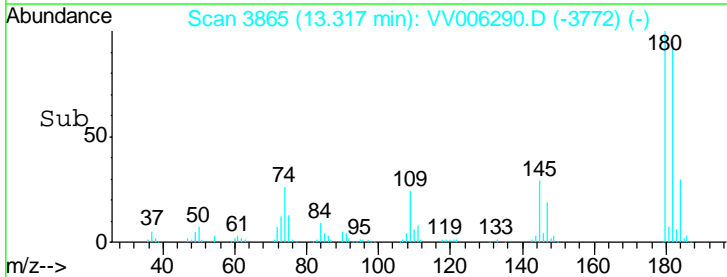
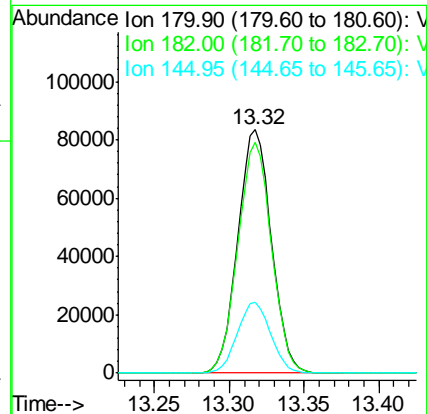
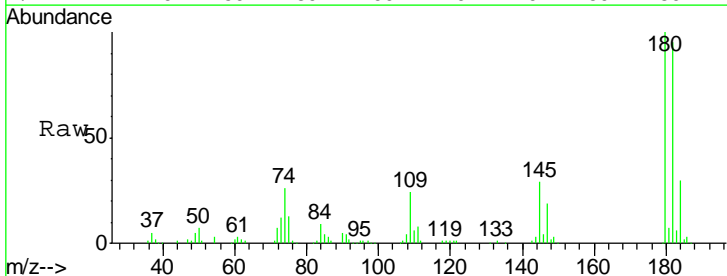
Ion	Ratio	Lower	Upper
180	100		
182	97.0	75.4	113.2
184	30.6	24.3	36.5
145	28.3	23.1	34.7

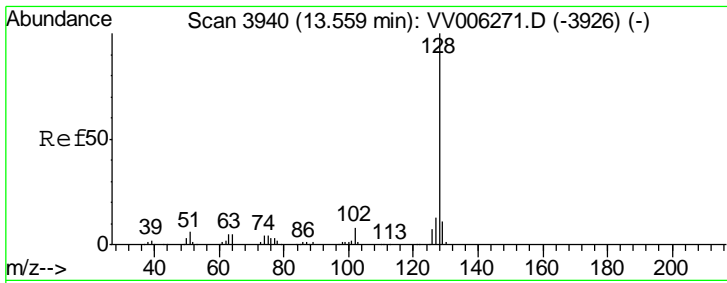


#68  
 1,2,4-trichlorobenzene  
 Concen: 4.954 ug/L  
 RT: 13.32 min Scan# 3865  
 Delta R.T. -0.00 min  
 Lab File: VV006290.D  
 Acq: 15 Jun 2018 19:14

Tgt Ion:180 Resp: 130460

Ion	Ratio	Lower	Upper
180	100		
182	95.1	76.7	115.1
145	28.9	23.7	35.5

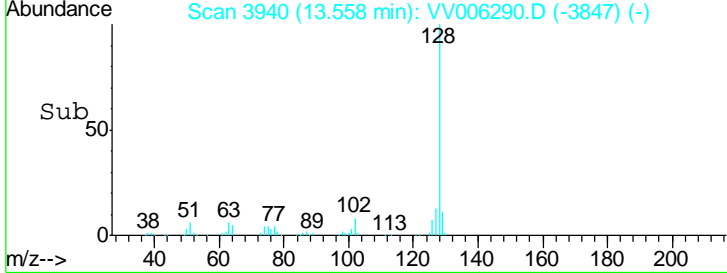
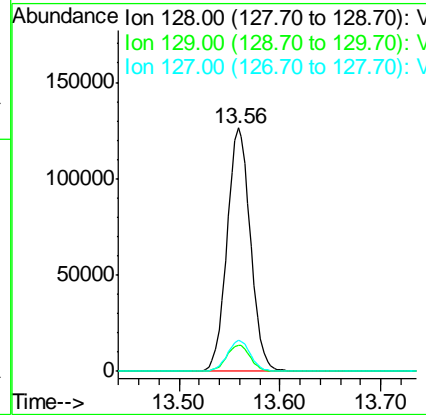
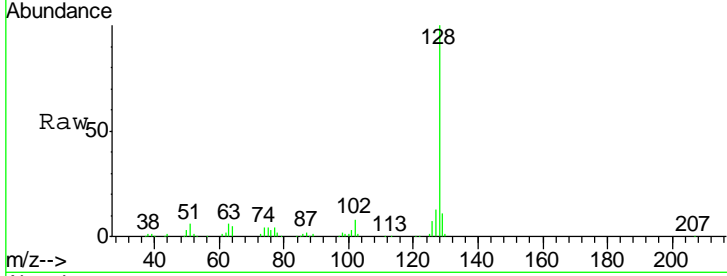




#69  
 Naphthalene  
 Concen: 4.622 ug/L  
 RT: 13.56 min Scan# 3940  
 Delta R.T. -0.00 min  
 Lab File: VV006290.D  
 Acq: 15 Jun 2018 19:14

Instrument :  
 MSVOA\_V  
 ClientSampled :  
 VSTD00566

Tgt Ion	Resp	Lower	Upper
128	204821		
129	10.9	8.7	13.1
127	12.5	10.1	15.1



#70  
 1,2,3-Trichlorobenzene  
 Concen: 5.034 ug/L  
 RT: 13.80 min Scan# 4015  
 Delta R.T. -0.00 min  
 Lab File: VV006290.D  
 Acq: 15 Jun 2018 19:14

Tgt Ion	Resp	Lower	Upper
180	121800		
182	93.8	76.2	114.2
145	30.3	25.0	37.4

