

Data File : VV006300.D
 Acq On : 16 Jun 2018 00:29
 Operator : SY/MD
 Sample : J3473-11
 Misc : 25 mL/MSVOA_V/WATER
 ALS Vial : 1 Sample Multiplier: 1

Instrument :
 MSVOA_V
 ClientSampleId :
 C0KB5

Quant Time: Jun 16 01:13:19 2018
 Quant Method : Z:\VOASRV\HPCHEM1\MSVOA_V\METHOD\SOMVTR053118WMA.M
 Quant Title : TRACE VOA SOM01.0
 QLast Update : Sat Jun 16 00:57:31 2018
 Response via : Initial Calibration

Internal Standards	R.T.	QIon	Response	Conc	Units	Dev(Min)
1) 1,4-Difluorobenzene	5.67	114	266918	5.00	ug/L	0.00
28) Chlorobenzene-d5	8.90	117	237773	5.00	ug/L	0.00
60) 1,4-Dichlorobenzene-d4	11.30	152	104850	5.00	ug/L	0.00

System Monitoring Compounds

4) Vinyl Chloride-d3	1.32	65	63533	4.36	ug/L	0.00
Spiked Amount	5.000	Range	40 - 130	Recovery	=	87.20%
7) Chloroethane-d5	1.58	69	62857	5.38	ug/L	0.00
Spiked Amount	5.000	Range	65 - 130	Recovery	=	107.60%
11) 1,1-Dichloroethene-d2	2.13	63	90346	3.19	ug/L	0.00
Spiked Amount	5.000	Range	60 - 125	Recovery	=	63.80%
20) 2-Butanone-d5	3.97	46	205443	66.37	ug/L	0.00
Spiked Amount	50.000	Range	40 - 130	Recovery	=	132.74%#
24) Chloroform-d	4.41	84	136466	4.84	ug/L	0.00
Spiked Amount	5.000	Range	70 - 125	Recovery	=	96.80%
26) 1,2-Dichloroethane-d4	5.09	65	73132	5.36	ug/L	0.00
Spiked Amount	5.000	Range	70 - 130	Recovery	=	107.20%
32) Benzene-d6	5.11	84	275753	4.83	ug/L	0.00
Spiked Amount	5.000	Range	70 - 125	Recovery	=	96.60%
36) 1,2-Dichloropropane-d6	6.12	67	88601	5.16	ug/L	0.00
Spiked Amount	5.000	Range	60 - 140	Recovery	=	103.20%
41) Toluene-d8	7.37	98	231992	4.26	ug/L	0.00
Spiked Amount	5.000	Range	70 - 130	Recovery	=	85.20%
43) trans-1,3-Dichloropropene-	7.67	79	26388	3.43	ug/L	0.00
Spiked Amount	5.000	Range	55 - 130	Recovery	=	68.60%
46) 2-Hexanone-d5	8.14	63	155704	46.91	ug/L	0.00
Spiked Amount	50.000	Range	45 - 130	Recovery	=	93.82%
57) 1,1,2,2-Tetrachloroethane-	10.27	84	64695	5.20	ug/L	0.00
Spiked Amount	5.000	Range	65 - 120	Recovery	=	104.00%
64) 1,2-Dichlorobenzene-d4	11.68	152	95977	5.28	ug/L	0.00
Spiked Amount	5.000	Range	80 - 120	Recovery	=	105.60%

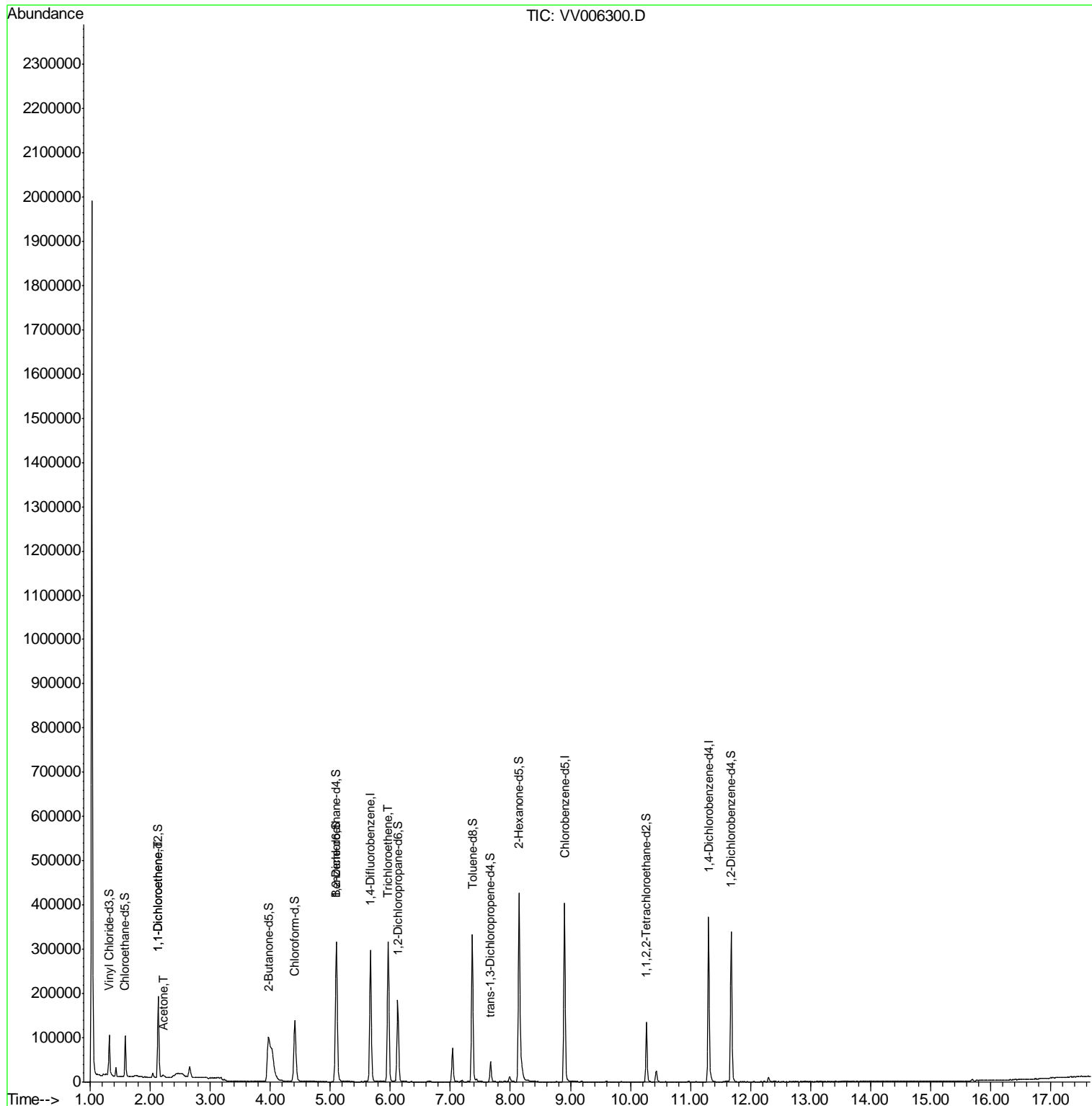
Target Compounds	R.T.	QIon	Response	Conc	Units	Qvalue
12) 1,1-Dichloroethene	2.14	96	7077	0.462	ug/L #	1
13) Acetone	2.23	43	10087	6.014	ug/L	98
34) Trichloroethene	5.96	95	107247	5.994	ug/L	99

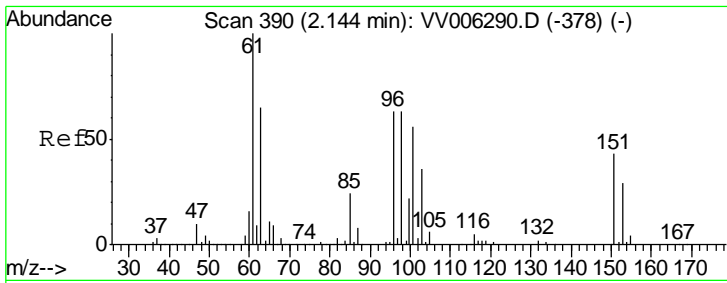
(#) = qualifier out of range (m) = manual integration (+) = signals summed

Data File : VV006300.D
Acq On : 16 Jun 2018 00:29
Operator : SY/MD
Sample : J3473-11
Misc : 25 mL/MSVOA_V/WATER
ALS Vial : 1 Sample Multiplier: 1

Instrument :
MSVOA_V
ClientSampleId :
C0KB5

Quant Time: Jun 16 01:13:19 2018
Quant Method : Z:\VOASRV\HPCHEM1\MSVOA_V\METHOD\SOMVTR053118WMA.M
Quant Title : TRACE VOA SOM01.0
QLast Update : Sat Jun 16 00:57:31 2018
Response via : Initial Calibration

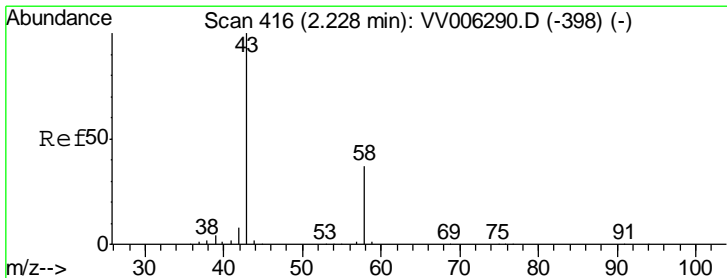
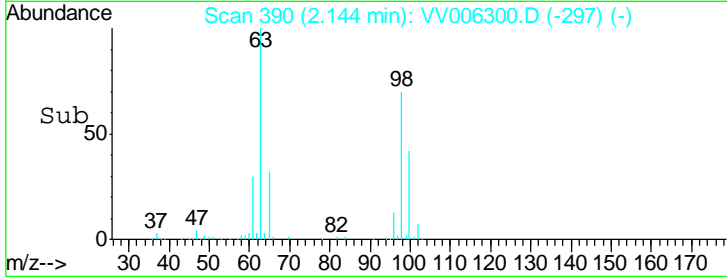
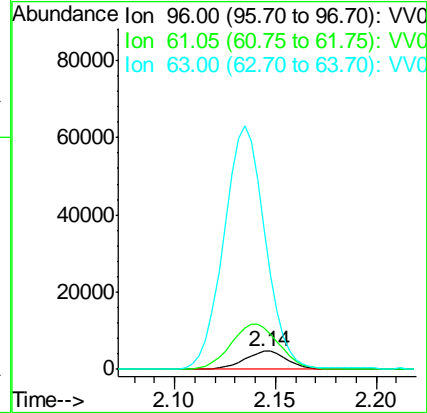
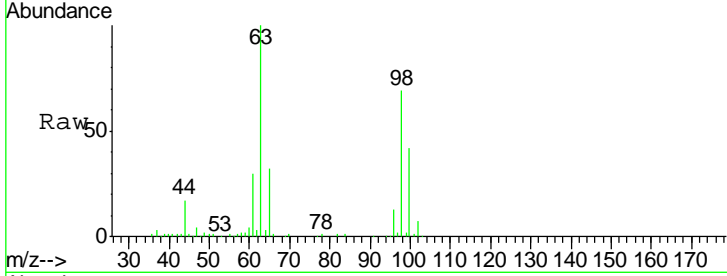




#12
 1,1-Dichloroethene
 Concen: 0.462 ug/L
 RT: 2.14 min Scan# 390
 Delta R.T. 0.00 min
 Lab File: VV006300.D
 Acq: 16 Jun 2018 00:29

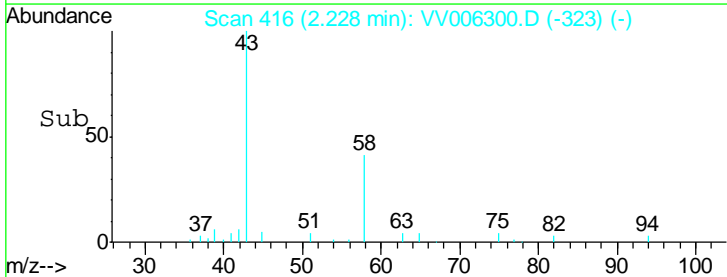
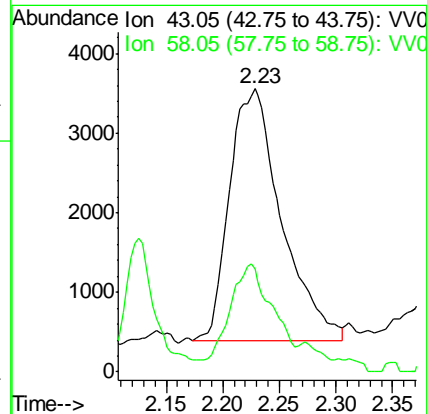
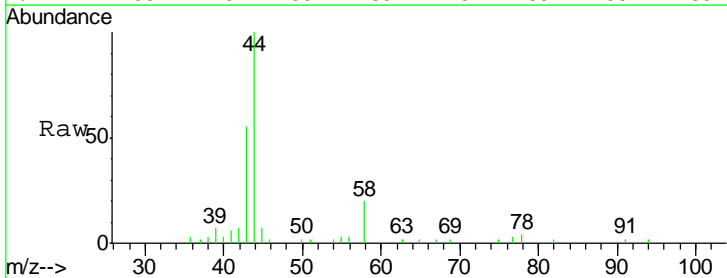
Instrument :
 MSVOA_V
 ClientSampled :
 C0KB5

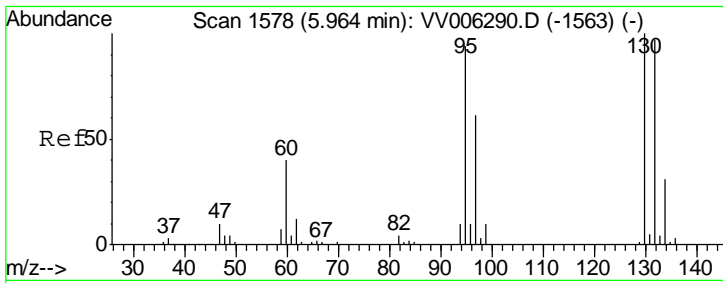
Tgt Ion	Resp	Lower	Upper
96	100		
61	232.9	114.2	212.2#
63	788.0	85.0	157.8#



#13
 Acetone
 Concen: 6.014 ug/L
 RT: 2.23 min Scan# 416
 Delta R.T. 0.00 min
 Lab File: VV006300.D
 Acq: 16 Jun 2018 00:29

Tgt Ion	Resp	Lower	Upper
43	100		
58	32.3	0.0	67.4



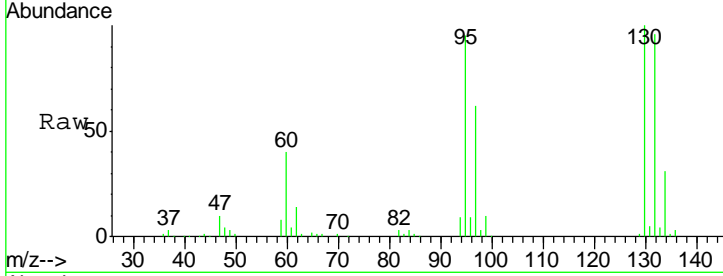


#34
 Trichloroethene
 Concen: 5.994 ug/L
 RT: 5.96 min Scan# 1578
 Delta R.T. 0.00 min
 Lab File: VV006300.D
 Acq: 16 Jun 2018 00:29

Instrument : MSVOA_V
 ClientSampled : C0KB5

Tgt Ion: 95 Resp: 107247

Ion	Ratio	Lower	Upper
95	100		
97	64.8	45.1	83.9
132	100.8	69.0	128.1
130	105.2	72.8	135.2



Abundance Ion 95.00 (94.70 to 95.70): VV006300.D (-1485) (-)
 Ion 96.95 (96.65 to 97.65): VV006300.D (-1485) (-)
 Ion 131.95 (131.65 to 132.65): VV006300.D (-1485) (-)
 Ion 129.95 (129.65 to 130.65): VV006300.D (-1485) (-)

