

Data Path : Z:\voasrv\HPCHEM1\MSVOA_V\Data\VW061523\
 Data File : VW031542.D
 Acq On : 15 Jun 2023 19:28
 Operator : SY/MD
 Sample : 03249-10MS
 Misc : 5.0mL/MSVOA_V/WATER
 ALS Vial : 26 Sample Multiplier: 1

Instrument :
 MSVOA_V
 ClientSampleId :
 EXYT1MS

Quant Time: Jun 16 02:51:51 2023
 Quant Method : Z:\voasrv\HPCHEM1\MSVOA_V\Method\SFAMVLM061423WMA.M
 Quant Title : VOC Analysis
 QLast Update : Fri Jun 16 02:44:48 2023
 Response via : Initial Calibration

Compound	R.T.	QIon	Response	Conc	Units	Dev(Min)
Internal Standards						
1) 1,4-Difluorobenzene	5.542	114	237125	50.000	ug/L	0.00
28) Chlorobenzene-d5	8.792	117	235026	50.000	ug/L	0.00
58) 1,4-Dichlorobenzene-d4	11.191	152	138377	50.000	ug/L	0.00
System Monitoring Compounds						
4) Vinyl Chloride-d3	1.285	65	60923	38.604	ug/L	0.00
Spiked Amount	50.000	Range 60 - 135	Recovery =	77.200%		
7) Chloroethane-d5	1.535	69	58731	42.652	ug/L	0.00
Spiked Amount	50.000	Range 70 - 130	Recovery =	85.300%		
11) 1,1-Dichloroethene-d2	2.066	65	31872	39.186	ug/L	0.00
Spiked Amount	50.000	Range 60 - 125	Recovery =	78.380%		
21) 2-Butanone-d5	3.799	46	124622	97.523	ug/L	0.00
Spiked Amount	100.000	Range 40 - 130	Recovery =	97.520%		
24) Chloroform-d	4.259	84	172735	43.705	ug/L	0.00
Spiked Amount	50.000	Range 70 - 125	Recovery =	87.400%		
26) 1,2-Dichloroethane-d4	4.950	65	114111	46.146	ug/L	0.00
Spiked Amount	50.000	Range 70 - 125	Recovery =	92.300%		
32) Benzene-d6	4.969	84	297944	45.038	ug/L	0.00
Spiked Amount	50.000	Range 70 - 125	Recovery =	90.080%		
36) 1,2-Dichloropropane-d6	5.995	67	106530	45.434	ug/L	0.00
Spiked Amount	50.000	Range 70 - 120	Recovery =	90.860%		
41) Toluene-d8	7.249	98	277780	45.757	ug/L	0.00
Spiked Amount	50.000	Range 80 - 120	Recovery =	91.520%		
43) trans-1,3-Dichloroprop...	7.558	79	53287	46.619	ug/L	0.00
Spiked Amount	50.000	Range 60 - 125	Recovery =	93.240%		
47) 2-Hexanone-d5	8.030	63	93733	101.248	ug/L	0.00
Spiked Amount	100.000	Range 45 - 130	Recovery =	101.250%		
56) 1,1,2,2-Tetrachloroeth...	10.159	84	160381	45.316	ug/L	0.00
Spiked Amount	50.000	Range 65 - 120	Recovery =	90.640%		
66) 1,2-Dichlorobenzene-d4	11.567	152	118687	44.996	ug/L	0.00
Spiked Amount	50.000	Range 80 - 120	Recovery =	90.000%		
Target Compounds						
2) Dichlorodifluoromethane	1.111	85	94461	37.556	ug/L	98
3) Chloromethane	1.217	50	104677	44.105	ug/L	98
5) Vinyl chloride	1.288	62	99682	42.369	ug/L	99
6) Bromomethane	1.494	94	64418	42.009	ug/L	100
8) Chloroethane	1.555	64	65120	42.854	ug/L	97
9) Trichlorofluoromethane	1.719	101	159995	40.876	ug/L	97
10) 1,1,2-Trichloro-1,2,2-...	2.076	101	81881	39.036	ug/L	97
12) 1,1-Dichloroethene	2.076	96	77932	44.417	ug/L	97
13) Acetone	2.127	43	82514	65.438	ug/L	98
14) Carbon disulfide	2.249	76	232571	43.821	ug/L	99
15) Methyl Acetate	2.381	43	89770	42.285	ug/L	100
16) Methylene chloride	2.455	84	98581	44.816	ug/L	99
17) trans-1,2-Dichloroethene	2.703	96	83038	45.340	ug/L	98
18) Methyl tert-butyl Ether	2.712	73	302477	49.497	ug/L	99
19) 1,1-Dichloroethane	3.121	63	210138	53.162	ug/L	98
20) cis-1,2-Dichloroethene	3.825	96	108634	54.887	ug/L	93
22) 2-Butanone	3.883	43	132303	83.990	ug/L	98
23) Bromochloromethane	4.156	128	50930	47.604	ug/L	97
25) Chloroform	4.288	83	201748	49.098	ug/L	99

Data Path : Z:\voasrv\HPCHEM1\MSVOA_V\Data\VW061523\
 Data File : VW031542.D
 Acq On : 15 Jun 2023 19:28
 Operator : SY/MD
 Sample : 03249-10MS
 Misc : 5.0mL/MSVOA_V/WATER
 ALS Vial : 26 Sample Multiplier: 1

Instrument :
 MSVOA_V
 ClientSampleId :
 EXYT1MS

Quant Time: Jun 16 02:51:51 2023
 Quant Method : Z:\voasrv\HPCHEM1\MSVOA_V\Method\SFAMVLM061423WMA.M
 Quant Title : VOC Analysis
 QLast Update : Fri Jun 16 02:44:48 2023
 Response via : Initial Calibration

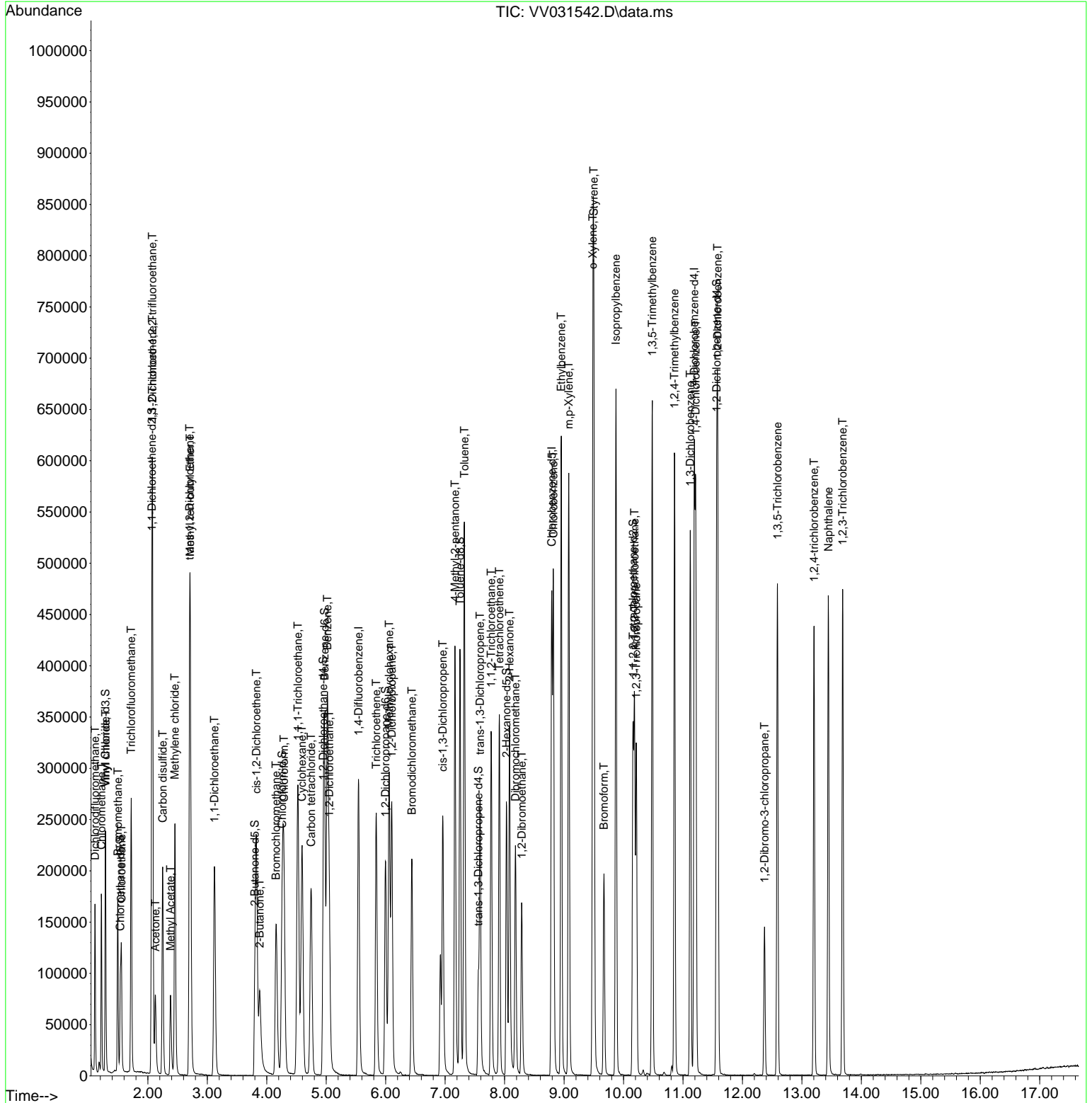
Compound	R.T.	QIon	Response	Conc	Units	Dev(Min)
27) 1,2-Dichloroethane	5.050	62	154360	48.673	ug/L	99
29) Cyclohexane	4.593	56	123213	40.295	ug/L	99
30) 1,1,1-Trichloroethane	4.522	97	243459	64.609	ug/L	99
31) Carbon tetrachloride	4.748	117	145690	43.636	ug/L	99
33) Benzene	5.018	78	366371	46.821	ug/L	100
34) Trichloroethene	5.841	95	97818	46.782	ug/L	97
35) Methylcyclohexane	6.059	83	116555	37.832	ug/L	99
37) 1,2-Dichloropropane	6.101	63	107132	46.625	ug/L	99
38) Bromodichloromethane	6.439	83	145489	46.845	ug/L	100
39) cis-1,3-Dichloropropene	6.960	75	164100	48.112	ug/L	99
40) 4-Methyl-2-pentanone	7.165	43	276697	102.555	ug/L	99
42) Toluene	7.323	91	391453	48.250	ug/L	100
44) trans-1,3-Dichloropropene	7.587	75	160633	48.360	ug/L	100
45) 1,1,2-Trichloroethane	7.773	97	104244	48.026	ug/L	98
46) Tetrachloroethene	7.911	164	76465	46.594	ug/L	98
48) 2-Hexanone	8.082	43	214670	99.624	ug/L	98
49) Dibromochloromethane	8.181	129	116016	48.091	ug/L	98
50) 1,2-Dibromoethane	8.288	107	112415	48.639	ug/L	99
51) Chlorobenzene	8.821	112	244288	45.463	ug/L	98
52) Ethylbenzene	8.953	91	418515	46.230	ug/L	100
53) m,p-Xylene	9.079	106	154680	46.657	ug/L	97
54) o-Xylene	9.484	106	150361	47.793	ug/L	98
55) Styrene	9.500	104	279518	49.748	ug/L	98
57) 1,1,2,2-Tetrachloroethane	10.185	83	172759	48.712	ug/L	96
59) Bromoform	9.670	173	85962	50.115	ug/L #	96
60) Isopropylbenzene	9.873	105	401092	45.466	ug/L	100
61) 1,2,3-Trichloropropane	10.214	75	132587	48.511	ug/L	99
62) 1,3,5-Trimethylbenzene	10.484	105	335973	46.079	ug/L	99
63) 1,2,4-Trimethylbenzene	10.857	105	315689	46.468	ug/L	99
64) 1,3-Dichlorobenzene	11.124	146	200023	45.225	ug/L	99
65) 1,4-Dichlorobenzene	11.214	146	210200	44.600	ug/L	99
67) 1,2-Dichlorobenzene	11.583	146	206575	46.276	ug/L	98
68) 1,2-Dibromo-3-chloropr...	12.371	75	38829	47.866	ug/L	95
69) 1,3,5-Trichlorobenzene	12.590	180	139827	41.490	ug/L	100
70) 1,2,4-trichlorobenzene	13.204	180	123944	41.958	ug/L	100
71) Naphthalene	13.445	128	343091	45.853	ug/L	100
72) 1,2,3-Trichlorobenzene	13.686	180	133495	43.487	ug/L	98

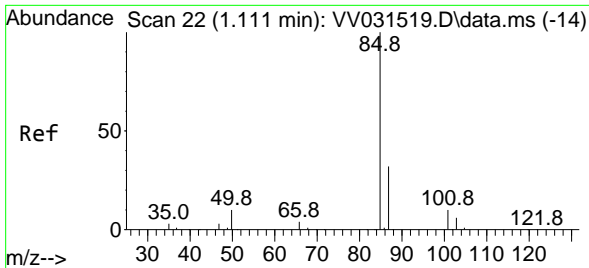
(#) = qualifier out of range (m) = manual integration (+) = signals summed

Data Path : Z:\voasrv\HPCHEM1\MSVOA_V\Data\VV061523\
 Data File : VV031542.D
 Acq On : 15 Jun 2023 19:28
 Operator : SY/MD
 Sample : 03249-10MS
 Misc : 5.0mL/MSVOA_V/WATER
 ALS Vial : 26 Sample Multiplier: 1

Instrument :
 MSVOA_V
 ClientSampleId :
 EXYT1MS

Quant Time: Jun 16 02:51:51 2023
 Quant Method : Z:\voasrv\HPCHEM1\MSVOA_V\Method\SFAMVLM061423WMA.M
 Quant Title : VOC Analysis
 QLast Update : Fri Jun 16 02:44:48 2023
 Response via : Initial Calibration

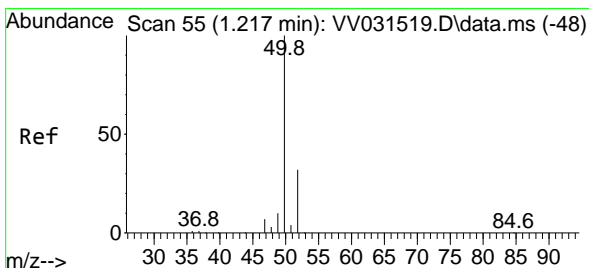
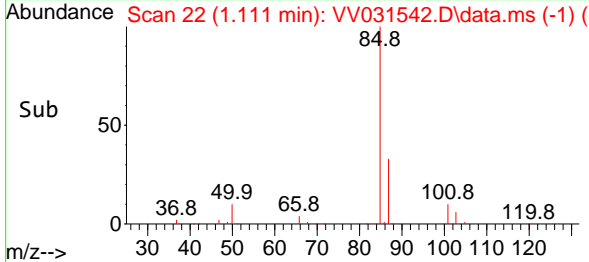
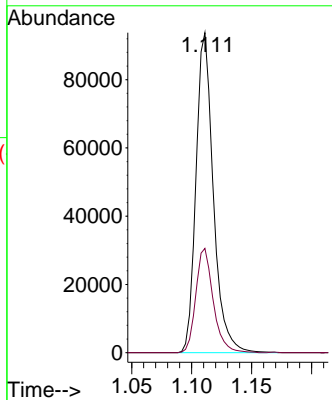
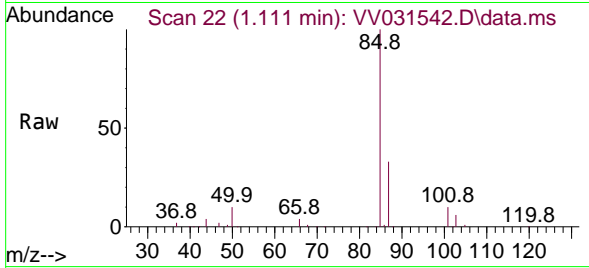




#2
 Dichlorodifluoromethane
 Concen: 37.556 ug/L
 RT: 1.111 min Scan# 21
 Delta R.T. 0.000 min
 Lab File: VV031542.D
 Acq: 15 Jun 2023 19:28

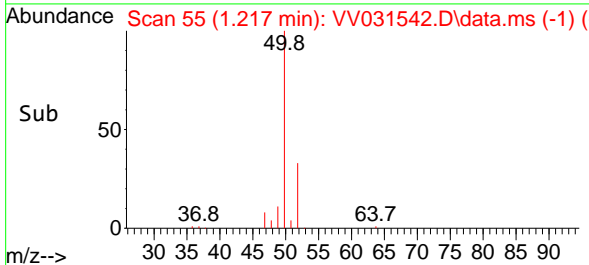
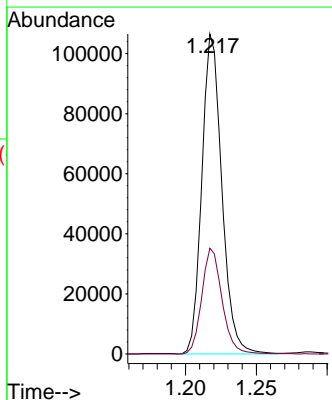
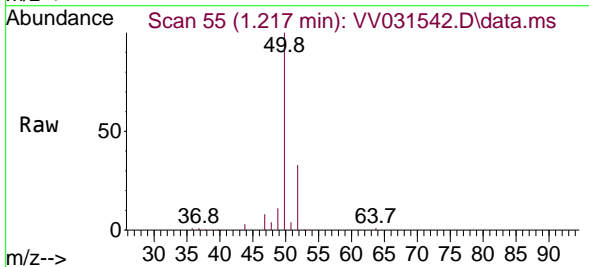
Instrument : MSVOA_V
 ClientSampleId : EXYT1MS

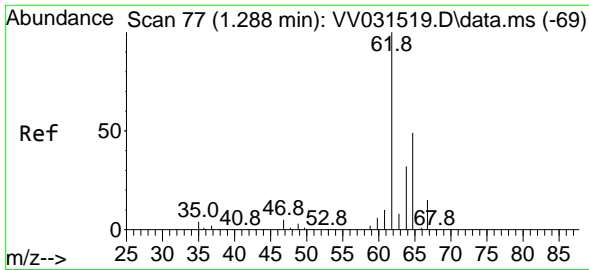
Tgt Ion: 85 Resp: 94461
 Ion Ratio Lower Upper
 85 100
 87 32.8 25.5 38.3



#3
 Chloromethane
 Concen: 44.105 ug/L
 RT: 1.217 min Scan# 55
 Delta R.T. 0.000 min
 Lab File: VV031542.D
 Acq: 15 Jun 2023 19:28

Tgt Ion: 50 Resp: 104677
 Ion Ratio Lower Upper
 50 100
 52 33.1 22.3 41.5

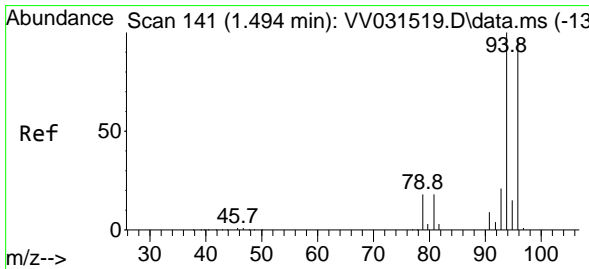
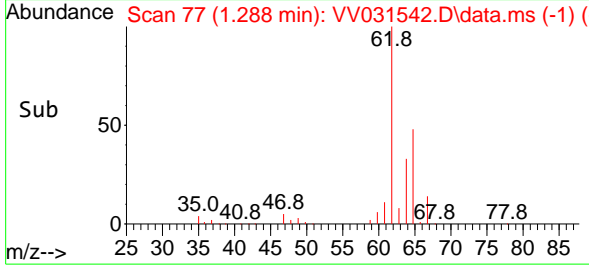
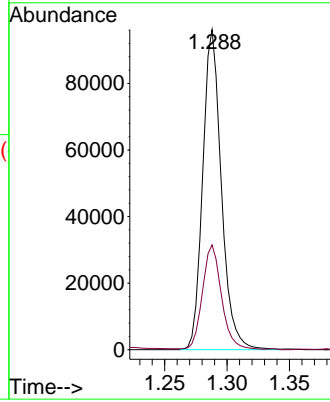
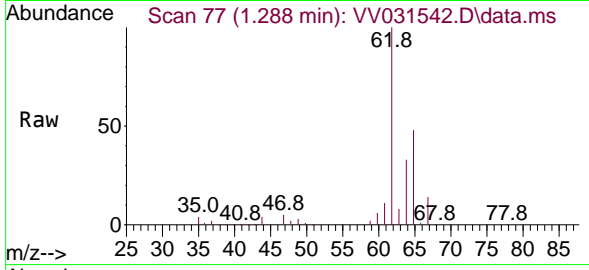




#5
 Vinyl chloride
 Concen: 42.369 ug/L
 RT: 1.288 min Scan# 71
 Delta R.T. 0.000 min
 Lab File: VV031542.D
 Acq: 15 Jun 2023 19:28

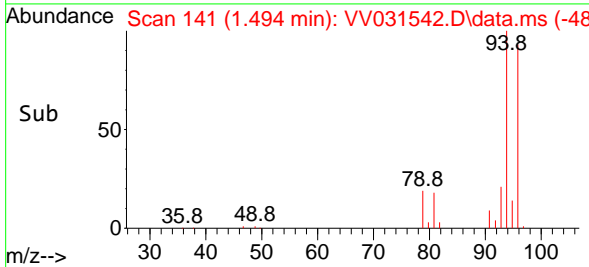
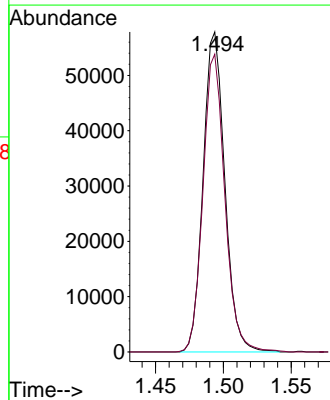
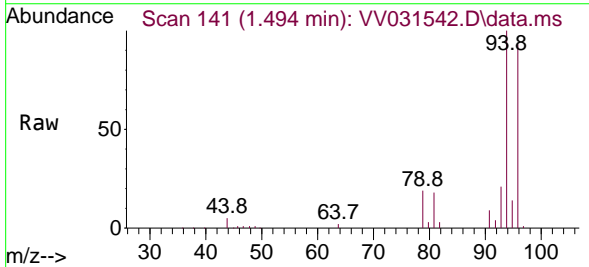
Instrument :
 MSVOA_V
 ClientSampleId :
 EXYT1MS

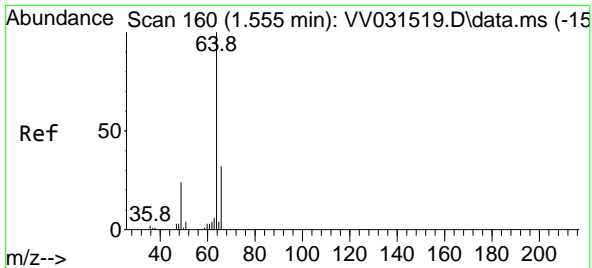
Tgt Ion: 62 Resp: 99682
 Ion Ratio Lower Upper
 62 100
 64 32.7 23.4 43.4



#6
 Bromomethane
 Concen: 42.009 ug/L
 RT: 1.494 min Scan# 141
 Delta R.T. 0.000 min
 Lab File: VV031542.D
 Acq: 15 Jun 2023 19:28

Tgt Ion: 94 Resp: 64418
 Ion Ratio Lower Upper
 94 100
 96 93.0 65.4 121.4

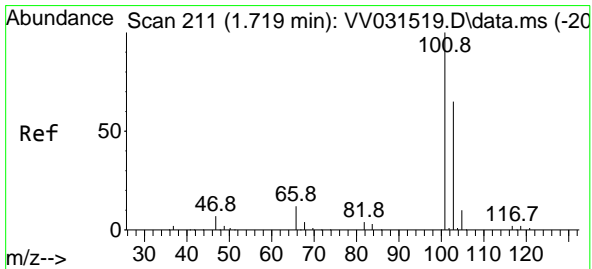
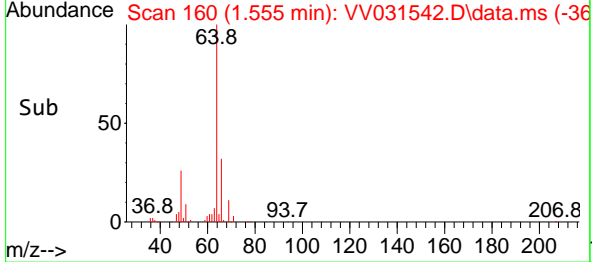
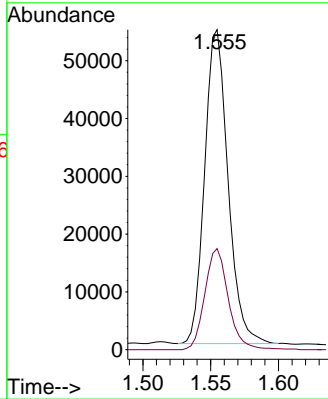
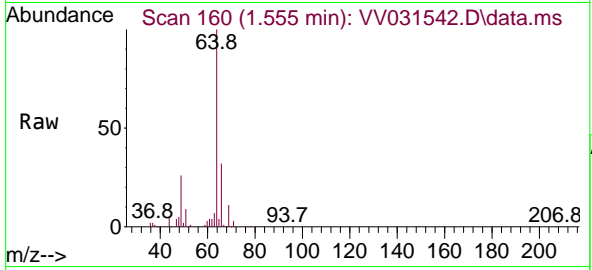




#8
 Chloroethane
 Concen: 42.854 ug/L
 RT: 1.555 min Scan# 160
 Delta R.T. 0.000 min
 Lab File: VV031542.D
 Acq: 15 Jun 2023 19:28

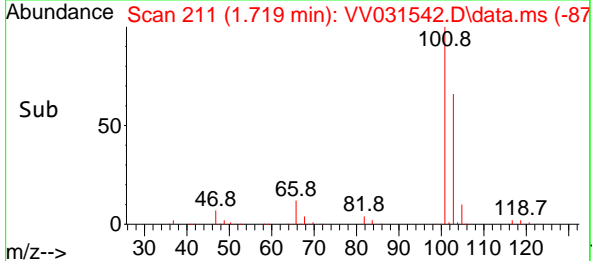
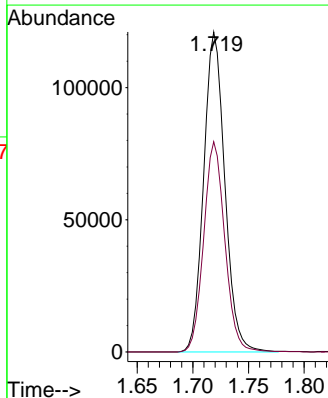
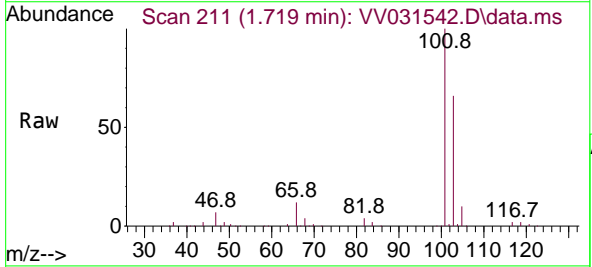
Instrument : MSVOA_V
 ClientSampleId : VV031542.D
 EXYT1MS

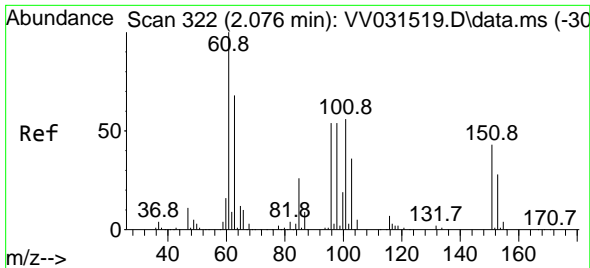
Tgt Ion: 64 Resp: 65120
 Ion Ratio Lower Upper
 64 100
 66 31.6 21.0 39.0



#9
 Trichlorofluoromethane
 Concen: 40.876 ug/L
 RT: 1.719 min Scan# 211
 Delta R.T. 0.000 min
 Lab File: VV031542.D
 Acq: 15 Jun 2023 19:28

Tgt Ion: 101 Resp: 159995
 Ion Ratio Lower Upper
 101 100
 103 65.6 50.9 76.3

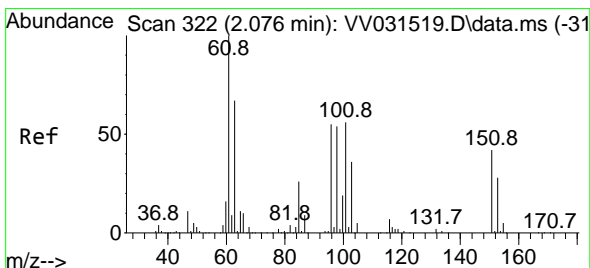
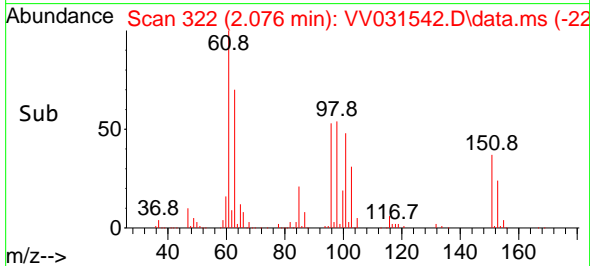
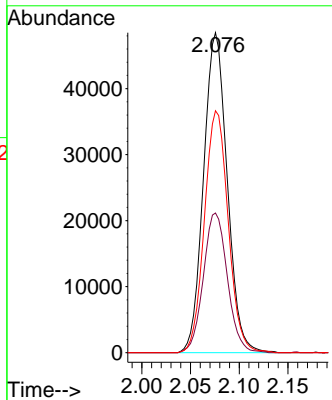
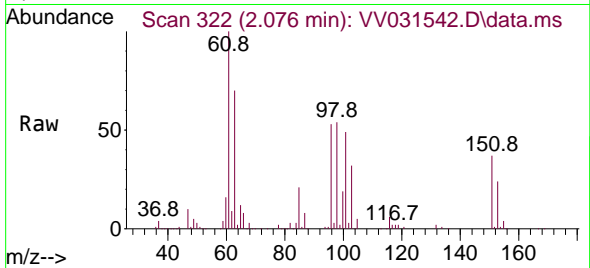




#10
 1,1,2-Trichloro-1,2,2-trifluoroethane
 Concen: 39.036 ug/L
 RT: 2.076 min Scan# 311
 Delta R.T. 0.000 min
 Lab File: VV031542.D
 Acq: 15 Jun 2023 19:28

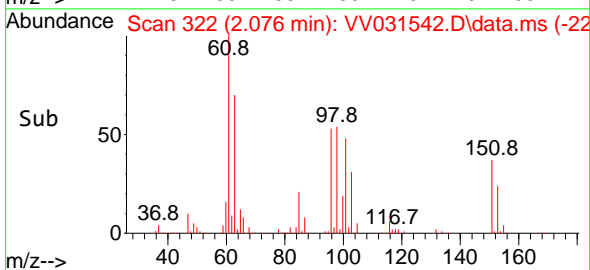
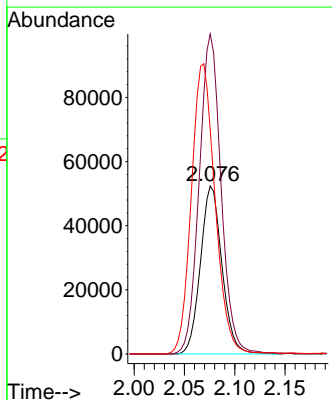
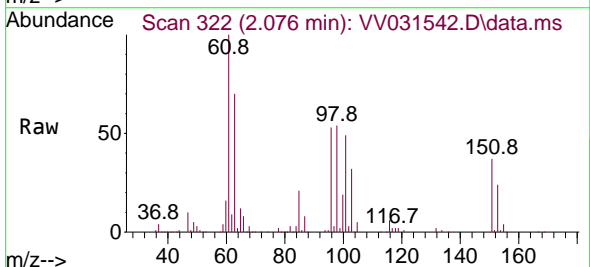
Instrument :
 MSVOA_V
 ClientSampleId :
 EXYT1MS

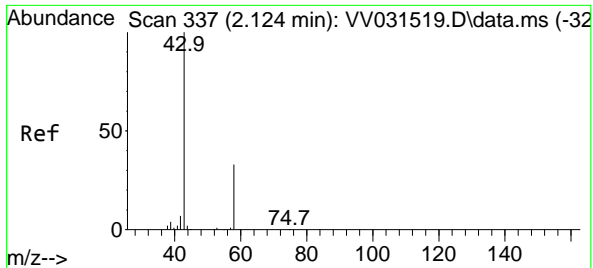
Tgt Ion:101 Resp: 81881
 Ion Ratio Lower Upper
 101 100
 85 44.3 37.4 56.0
 151 76.1 62.3 93.5



#12
 1,1-Dichloroethene
 Concen: 44.417 ug/L
 RT: 2.076 min Scan# 322
 Delta R.T. 0.000 min
 Lab File: VV031542.D
 Acq: 15 Jun 2023 19:28

Tgt Ion: 96 Resp: 77932
 Ion Ratio Lower Upper
 96 100
 61 190.5 128.9 239.5
 63 133.7 95.3 177.1

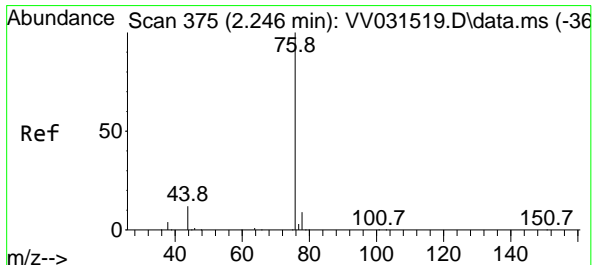
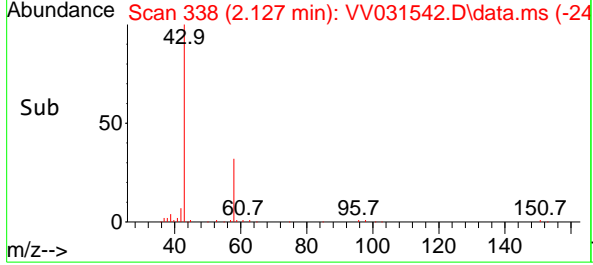
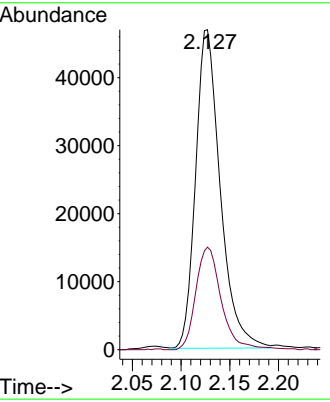
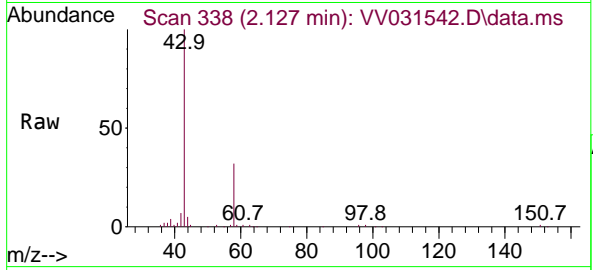




#13
 Acetone
 Concen: 65.438 ug/L
 RT: 2.127 min Scan# 311
 Delta R.T. 0.003 min
 Lab File: VV031542.D
 Acq: 15 Jun 2023 19:28

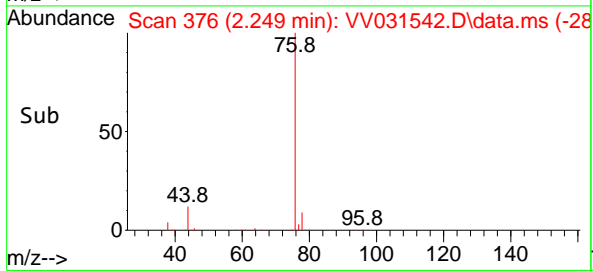
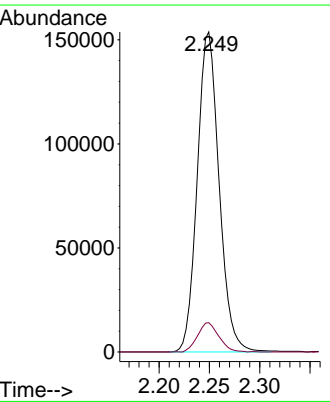
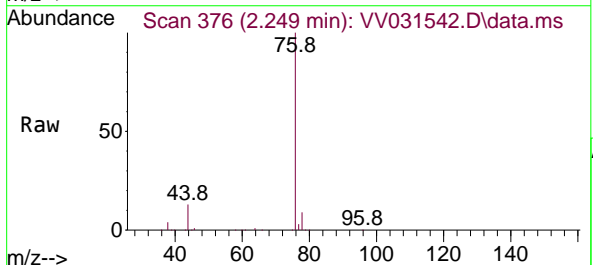
Instrument : MSVOA_V
 ClientSampleId : EXYT1MS

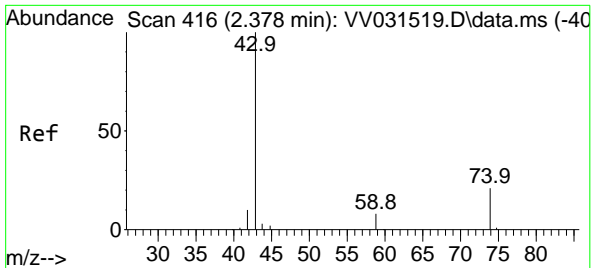
Tgt Ion: 43 Resp: 82514
 Ion Ratio Lower Upper
 43 100
 58 33.2 0.0 68.6



#14
 Carbon disulfide
 Concen: 43.821 ug/L
 RT: 2.249 min Scan# 376
 Delta R.T. 0.003 min
 Lab File: VV031542.D
 Acq: 15 Jun 2023 19:28

Tgt Ion: 76 Resp: 232571
 Ion Ratio Lower Upper
 76 100
 78 9.4 7.1 10.7

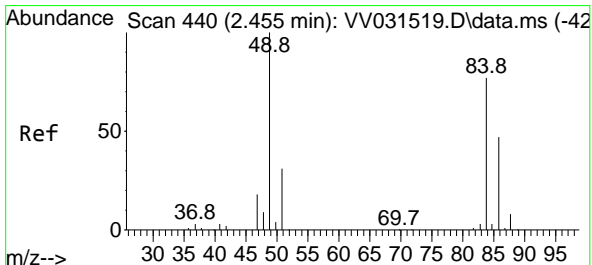
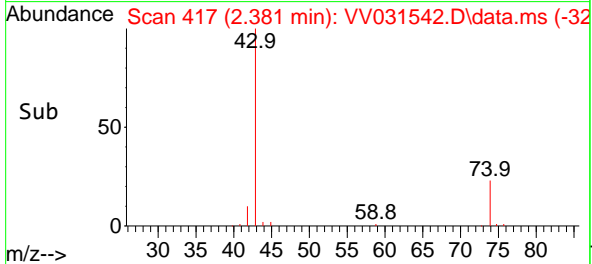
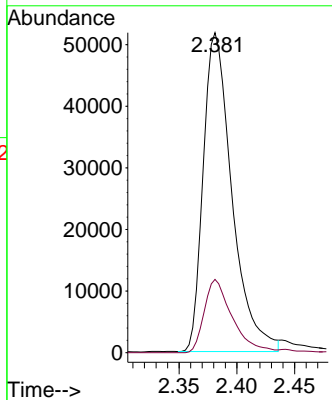
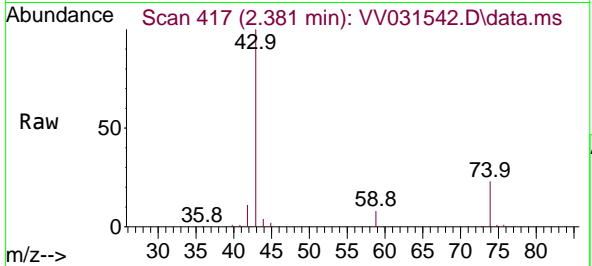




#15
 Methyl Acetate
 Concen: 42.285 ug/L
 RT: 2.381 min Scan# 417
 Delta R.T. 0.003 min
 Lab File: VV031542.D
 Acq: 15 Jun 2023 19:28

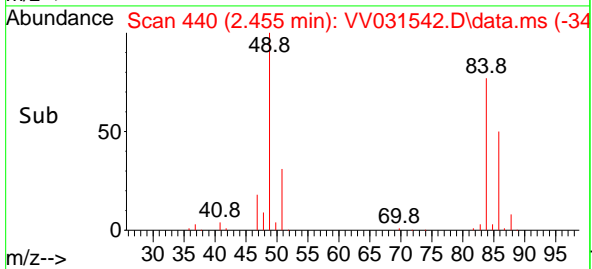
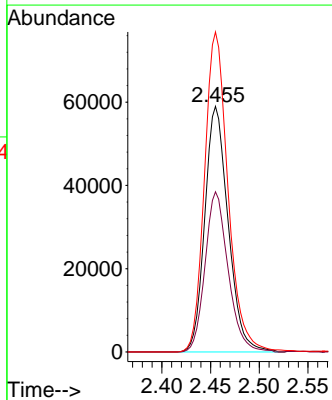
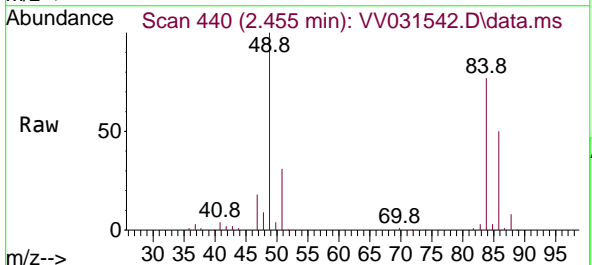
Instrument : MSVOA_V
 ClientSampleId : EXYT1MS

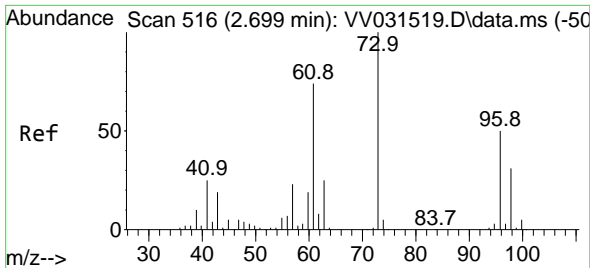
Tgt Ion: 43 Resp: 89770
 Ion Ratio Lower Upper
 43 100
 74 22.4 17.8 26.6



#16
 Methylene chloride
 Concen: 44.816 ug/L
 RT: 2.455 min Scan# 440
 Delta R.T. 0.000 min
 Lab File: VV031542.D
 Acq: 15 Jun 2023 19:28

Tgt Ion: 84 Resp: 98581
 Ion Ratio Lower Upper
 84 100
 86 66.3 45.8 85.0
 49 130.3 92.1 171.1

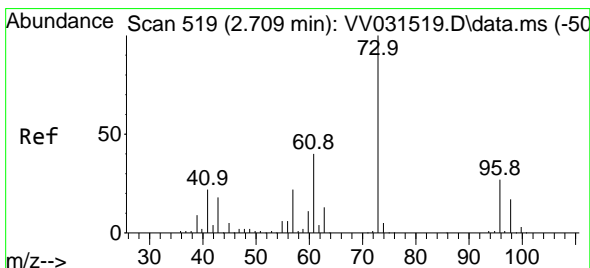
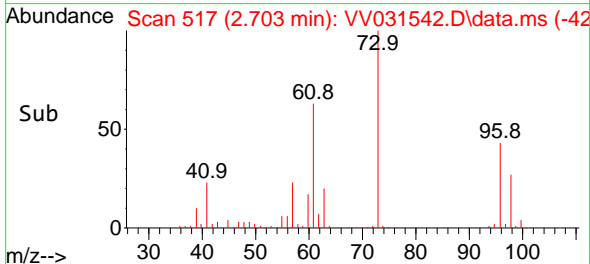
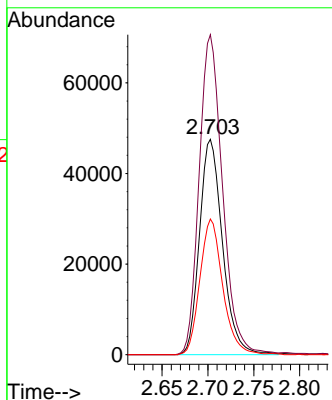
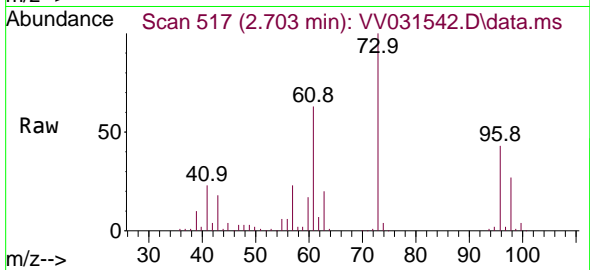




#17
 trans-1,2-Dichloroethene
 Concen: 45.340 ug/L
 RT: 2.703 min Scan# 517
 Delta R.T. 0.003 min
 Lab File: VV031542.D
 Acq: 15 Jun 2023 19:28

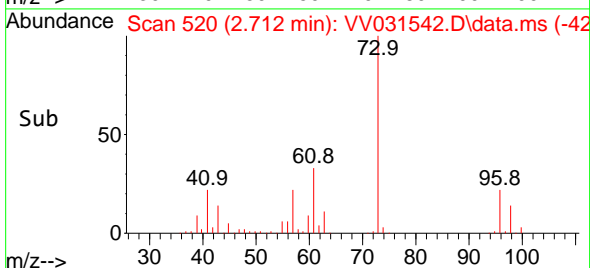
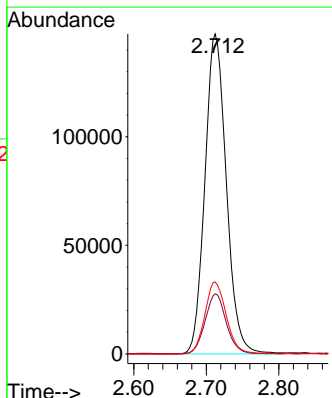
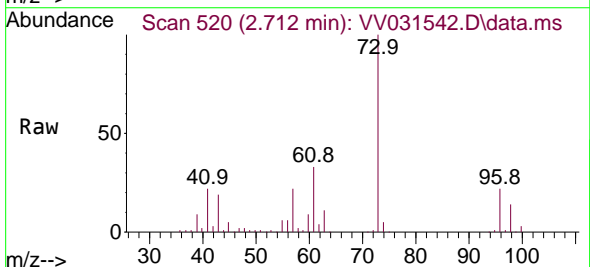
Instrument : MSVOA_V
 ClientSampleId : EXYT1MS

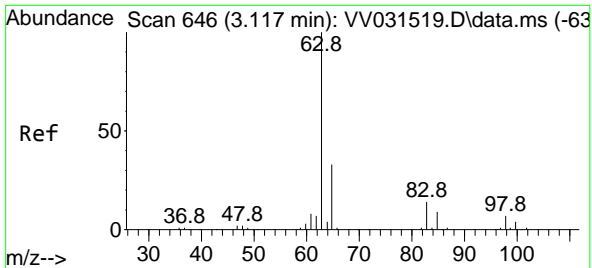
Tgt Ion: 96 Resp: 83038
 Ion Ratio Lower Upper
 96 100
 61 148.5 102.5 190.3
 98 64.8 44.1 81.9



#18
 Methyl tert-butyl Ether
 Concen: 49.497 ug/L
 RT: 2.712 min Scan# 520
 Delta R.T. 0.003 min
 Lab File: VV031542.D
 Acq: 15 Jun 2023 19:28

Tgt Ion: 73 Resp: 302477
 Ion Ratio Lower Upper
 73 100
 43 18.4 15.0 22.4
 57 22.5 18.2 27.4



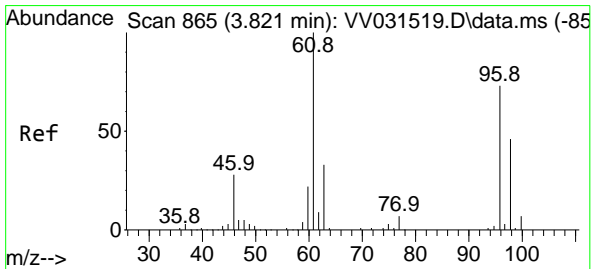
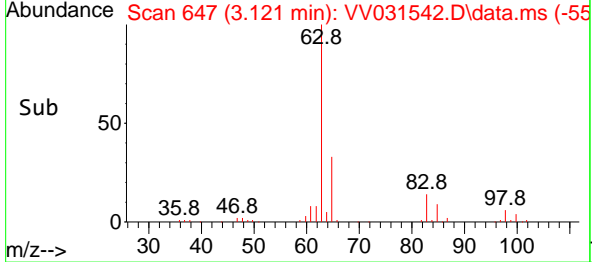
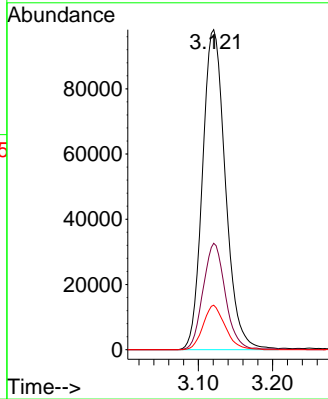
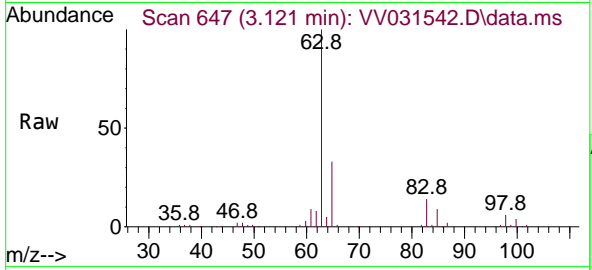


#19
 1,1-Dichloroethane
 Concen: 53.162 ug/L
 RT: 3.121 min Scan# 647
 Delta R.T. 0.003 min
 Lab File: VV031542.D
 Acq: 15 Jun 2023 19:28

Instrument : MSVOA_V
 ClientSampleId : EXYT1MS

Tgt Ion: 63 Resp: 210138

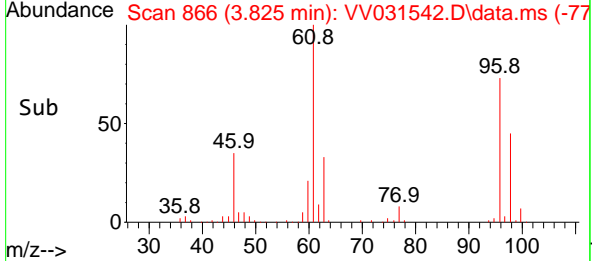
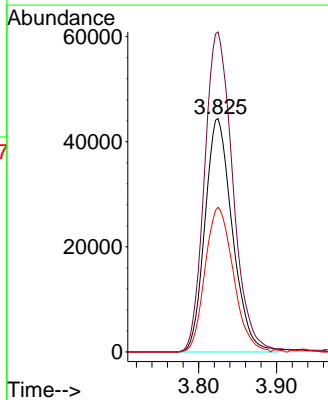
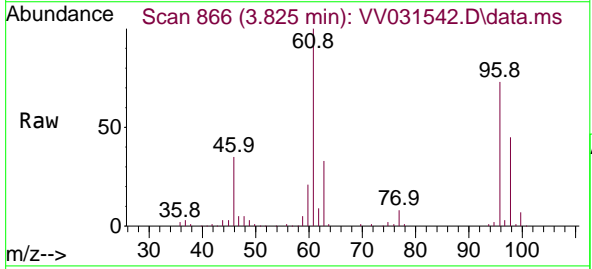
Ion	Ratio	Lower	Upper
63	100		
65	33.3	22.5	41.7
83	13.9	10.0	18.6

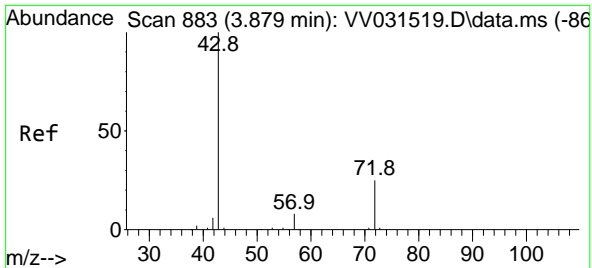


#20
 cis-1,2-Dichloroethene
 Concen: 54.887 ug/L
 RT: 3.825 min Scan# 866
 Delta R.T. 0.003 min
 Lab File: VV031542.D
 Acq: 15 Jun 2023 19:28

Tgt Ion: 96 Resp: 108634

Ion	Ratio	Lower	Upper
96	100		
61	132.1	98.6	183.0
98	59.7	45.7	84.9

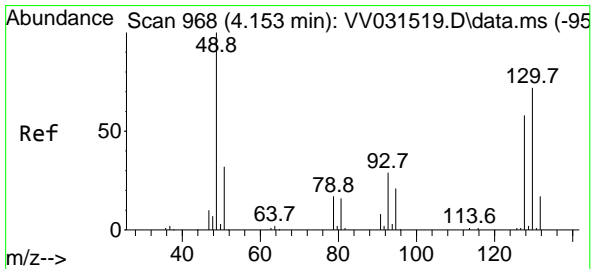
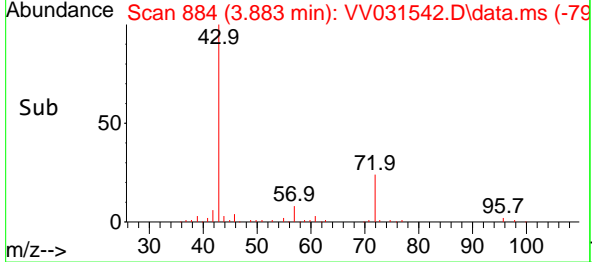
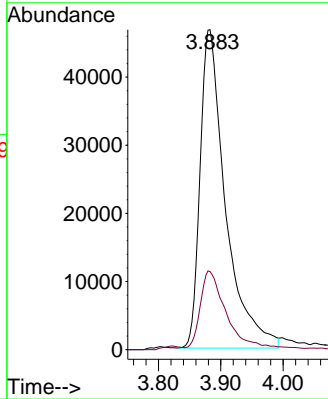
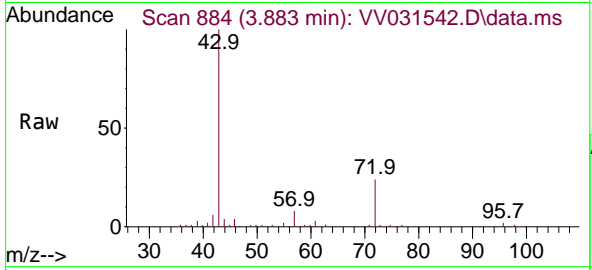




#22
 2-Butanone
 Concen: 83.990 ug/L
 RT: 3.883 min Scan# 884
 Delta R.T. 0.003 min
 Lab File: VV031542.D
 Acq: 15 Jun 2023 19:28

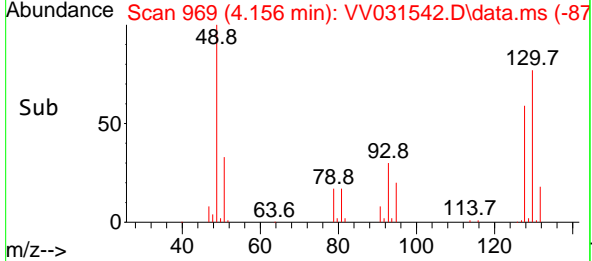
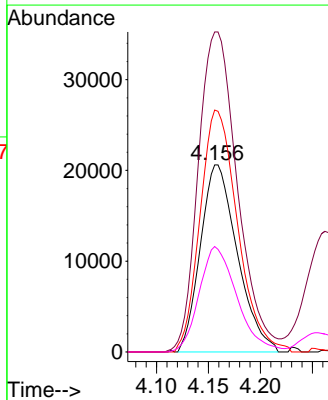
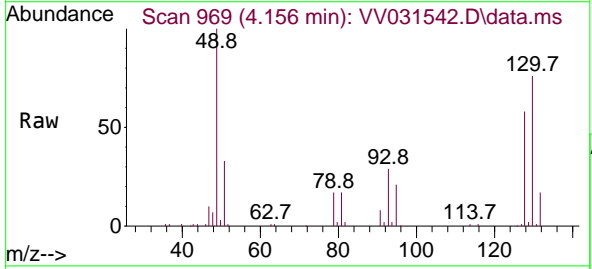
Instrument :
 MSVOA_V
 ClientSampleId :
 EXYT1MS

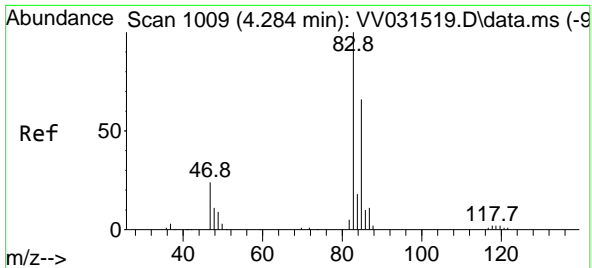
Tgt Ion: 43 Resp: 132303
 Ion Ratio Lower Upper
 43 100
 72 23.5 12.2 36.4



#23
 Bromochloromethane
 Concen: 47.604 ug/L
 RT: 4.156 min Scan# 969
 Delta R.T. 0.003 min
 Lab File: VV031542.D
 Acq: 15 Jun 2023 19:28

Tgt Ion:128 Resp: 50930
 Ion Ratio Lower Upper
 128 100
 49 164.1 120.6 224.0
 130 126.3 88.1 163.7
 51 55.1 44.9 67.3

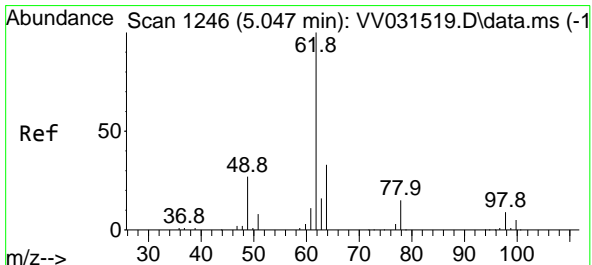
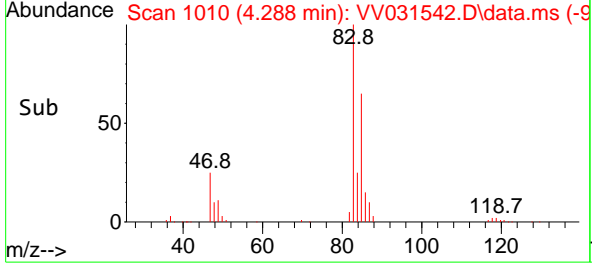
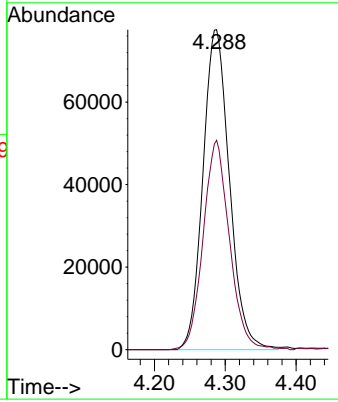
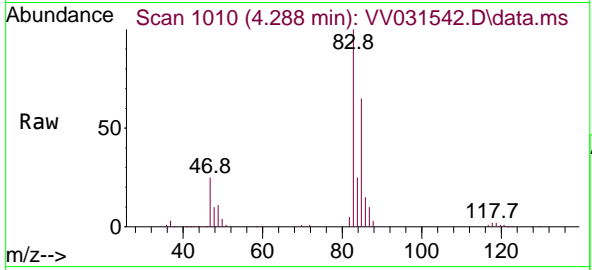




#25
 Chloroform
 Concen: 49.098 ug/L
 RT: 4.288 min Scan# 1009
 Delta R.T. 0.003 min
 Lab File: VV031542.D
 Acq: 15 Jun 2023 19:28

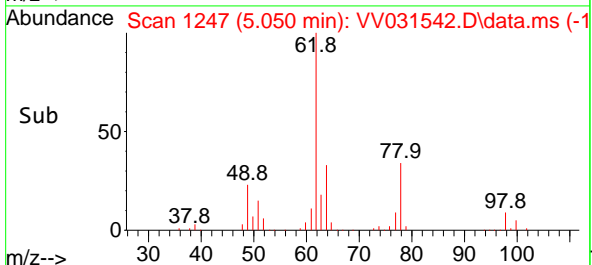
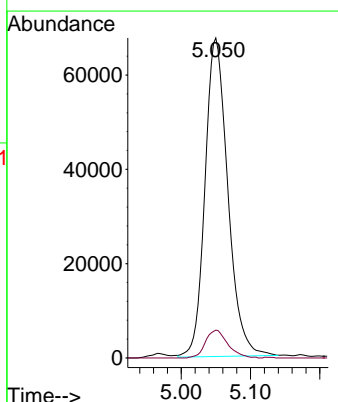
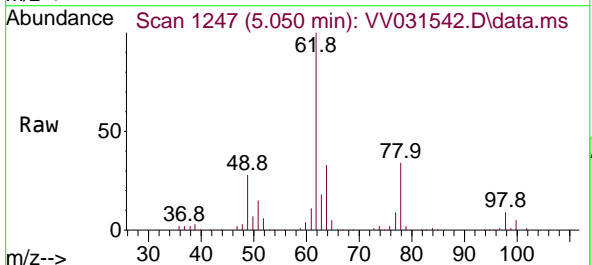
Instrument : MSVOA_V
 ClientSampleId : EXYT1MS

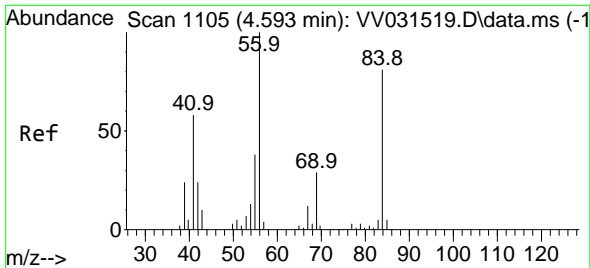
Tgt Ion: 83 Resp: 201748
 Ion Ratio Lower Upper
 83 100
 85 65.4 45.3 84.1



#27
 1,2-Dichloroethane
 Concen: 48.673 ug/L
 RT: 5.050 min Scan# 1247
 Delta R.T. 0.003 min
 Lab File: VV031542.D
 Acq: 15 Jun 2023 19:28

Tgt Ion: 62 Resp: 154360
 Ion Ratio Lower Upper
 62 100
 98 8.7 6.6 9.8



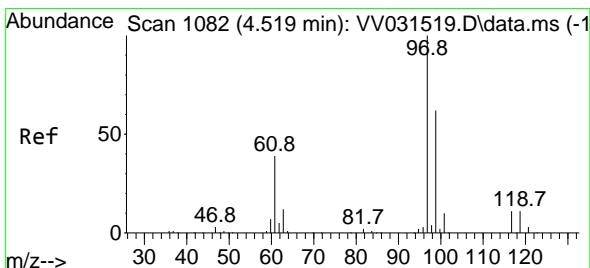
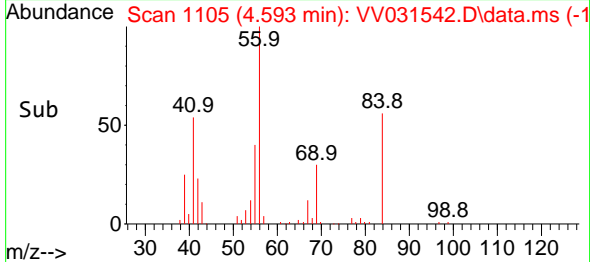
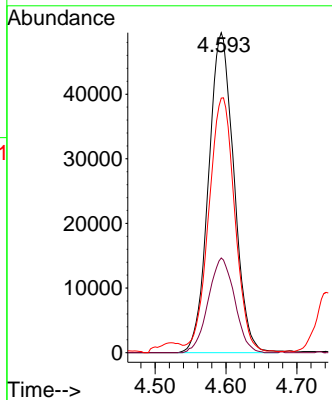
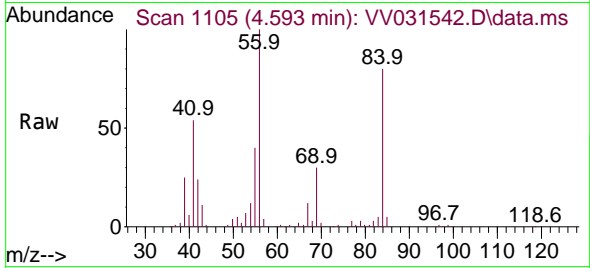


#29
 Cyclohexane
 Concen: 40.295 ug/L
 RT: 4.593 min Scan# 1105
 Delta R.T. 0.000 min
 Lab File: VV031542.D
 Acq: 15 Jun 2023 19:28

Instrument :
 MSVOA_V
 ClientSampleId :
 EXYT1MS

Tgt Ion: 56 Resp: 123213

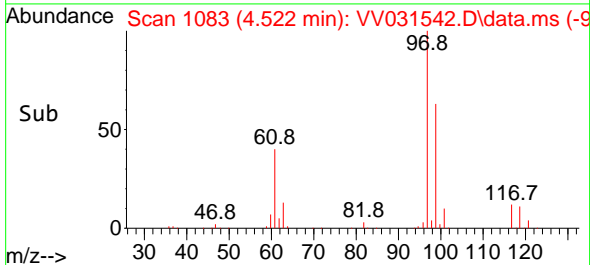
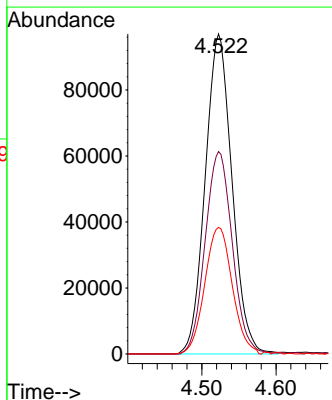
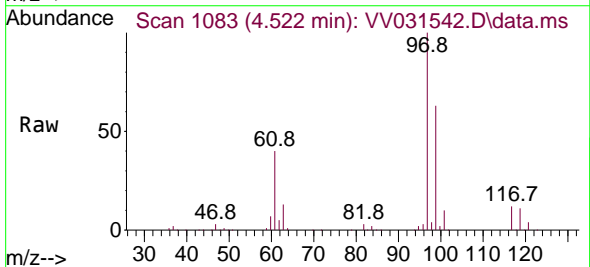
Ion	Ratio	Lower	Upper
56	100		
69	30.7	24.3	36.5
84	81.9	65.0	97.6

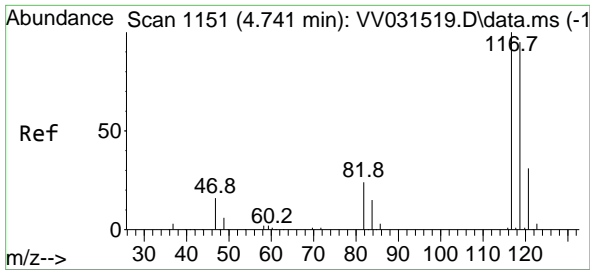


#30
 1,1,1-Trichloroethane
 Concen: 64.609 ug/L
 RT: 4.522 min Scan# 1083
 Delta R.T. 0.003 min
 Lab File: VV031542.D
 Acq: 15 Jun 2023 19:28

Tgt Ion: 97 Resp: 243459

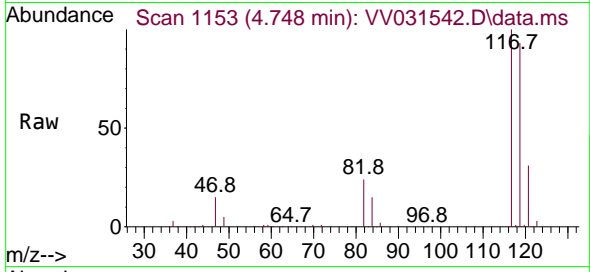
Ion	Ratio	Lower	Upper
97	100		
99	64.1	51.8	77.6
61	40.6	33.0	49.6



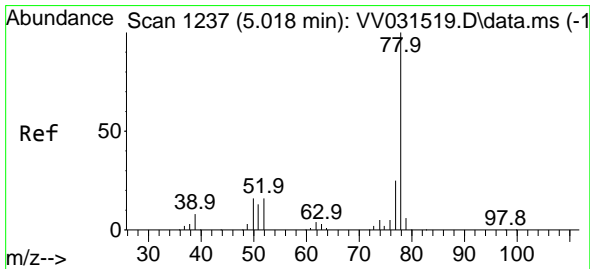
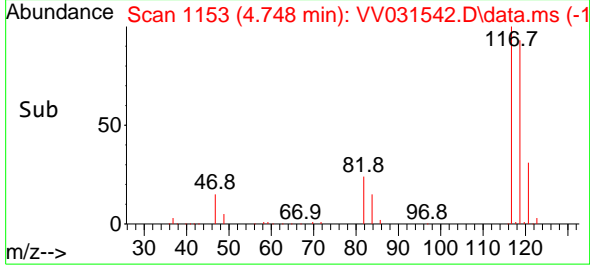
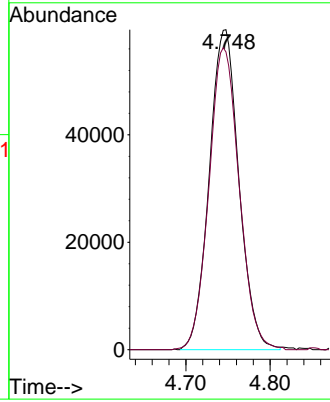


#31
 Carbon tetrachloride
 Concen: 43.636 ug/L
 RT: 4.748 min Scan# 1151
 Delta R.T. 0.006 min
 Lab File: VV031542.D
 Acq: 15 Jun 2023 19:28

Instrument :
 MSVOA_V
 ClientSampleId :
 EXYT1MS

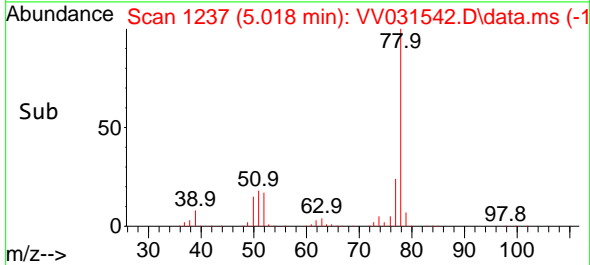
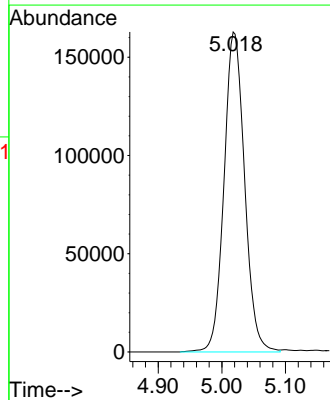
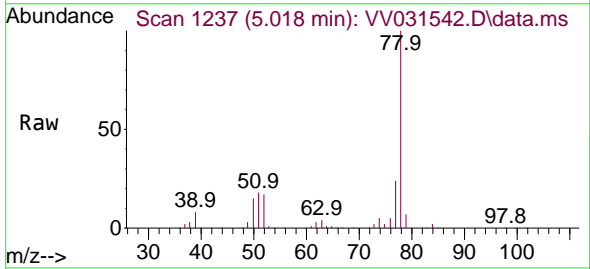


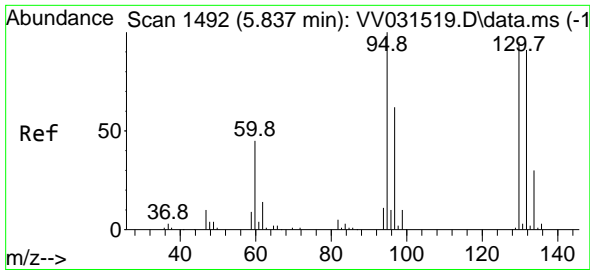
Tgt Ion:117 Resp: 145690
 Ion Ratio Lower Upper
 117 100
 119 96.2 76.2 114.4



#33
 Benzene
 Concen: 46.821 ug/L
 RT: 5.018 min Scan# 1237
 Delta R.T. 0.000 min
 Lab File: VV031542.D
 Acq: 15 Jun 2023 19:28

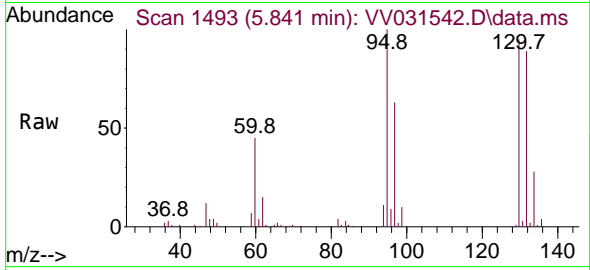
Tgt Ion: 78 Resp: 366371



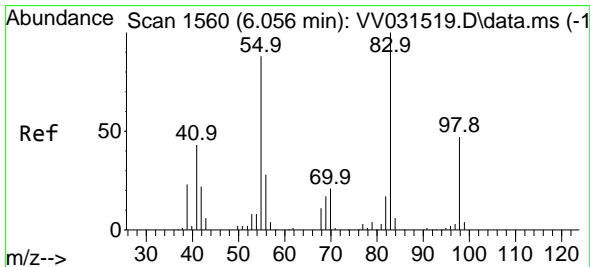
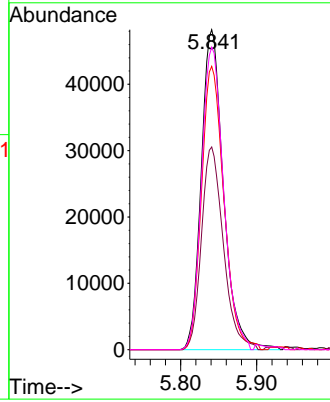
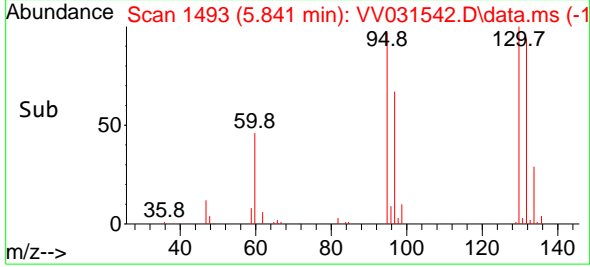


#34
 Trichloroethene
 Concen: 46.782 ug/L
 RT: 5.841 min Scan# 1493
 Delta R.T. 0.003 min
 Lab File: VV031542.D
 Acq: 15 Jun 2023 19:28

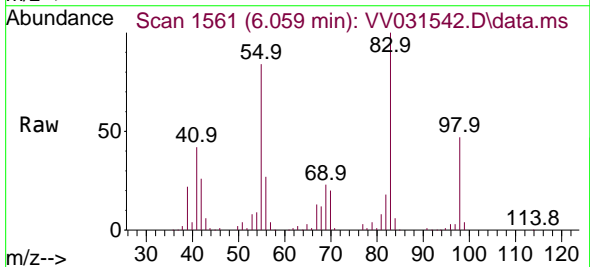
Instrument : MSVOA_V
 ClientSampleId : EXYT1MS



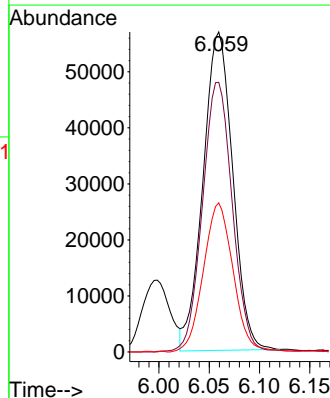
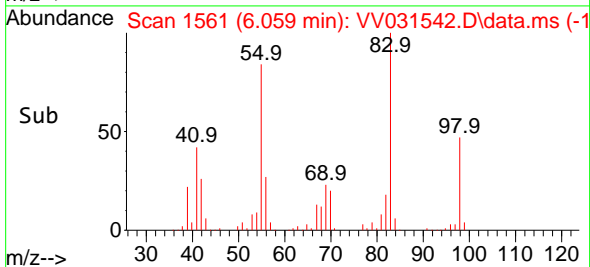
Tgt Ion: 95 Resp: 97818
 Ion Ratio Lower Upper
 95 100
 97 65.8 46.8 86.8
 132 90.7 66.4 123.2
 130 97.7 69.7 129.4

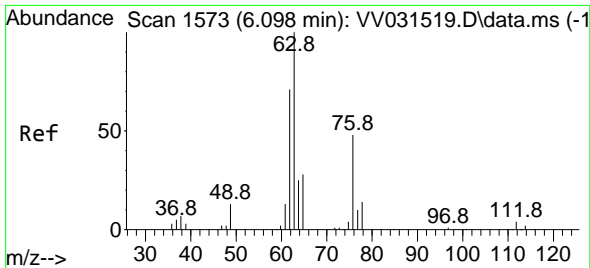


#35
 Methylcyclohexane
 Concen: 37.832 ug/L
 RT: 6.059 min Scan# 1561
 Delta R.T. 0.003 min
 Lab File: VV031542.D
 Acq: 15 Jun 2023 19:28



Tgt Ion: 83 Resp: 116555
 Ion Ratio Lower Upper
 83 100
 55 85.4 68.7 103.1
 98 46.9 37.0 55.4

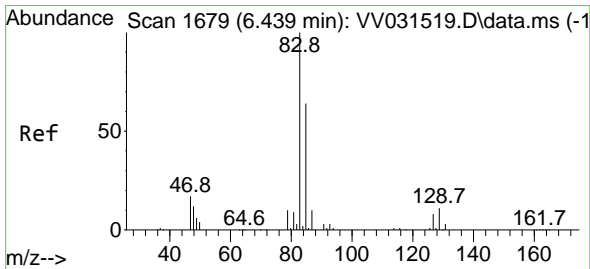
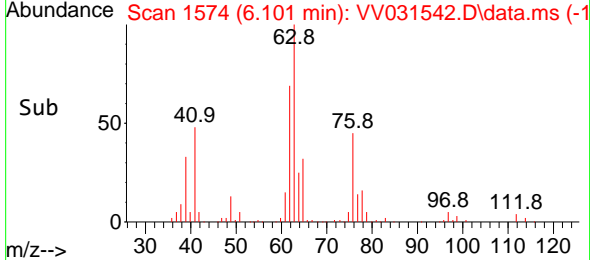
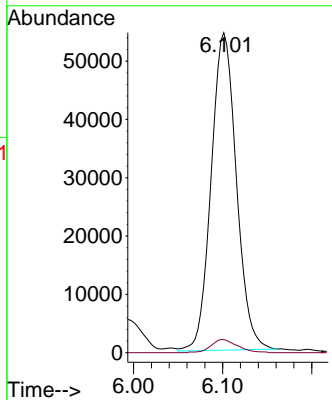
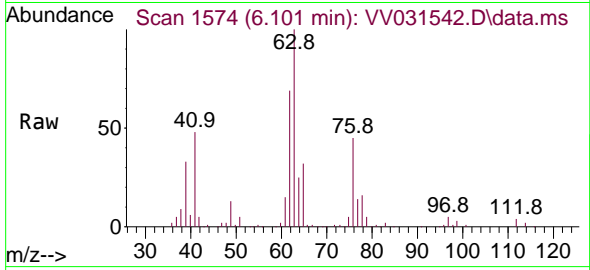




#37
 1,2-Dichloropropane
 Concen: 46.625 ug/L
 RT: 6.101 min Scan# 11
 Delta R.T. 0.003 min
 Lab File: VV031542.D
 Acq: 15 Jun 2023 19:28

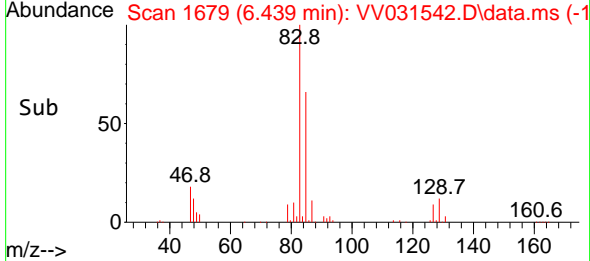
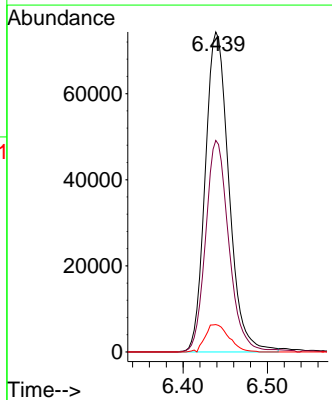
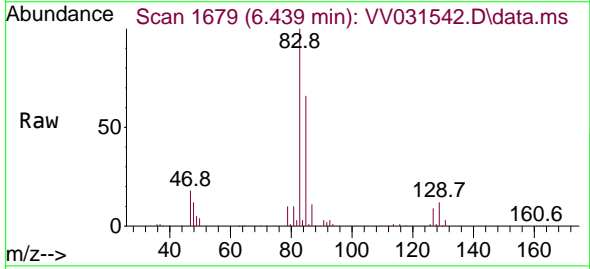
Instrument : MSVOA_V
 ClientSampleId : EXYT1MS

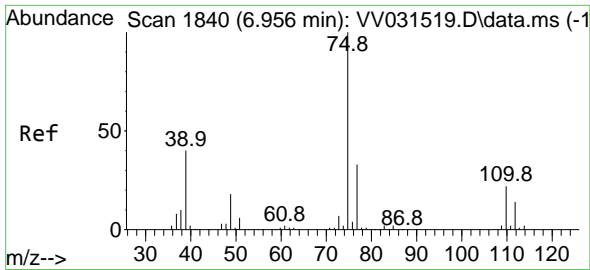
Tgt Ion: 63 Resp: 107132
 Ion Ratio Lower Upper
 63 100
 112 4.3 3.3 4.9



#38
 Bromodichloromethane
 Concen: 46.845 ug/L
 RT: 6.439 min Scan# 1679
 Delta R.T. 0.000 min
 Lab File: VV031542.D
 Acq: 15 Jun 2023 19:28

Tgt Ion: 83 Resp: 145489
 Ion Ratio Lower Upper
 83 100
 85 64.3 45.3 84.1
 127 9.2 7.6 11.4

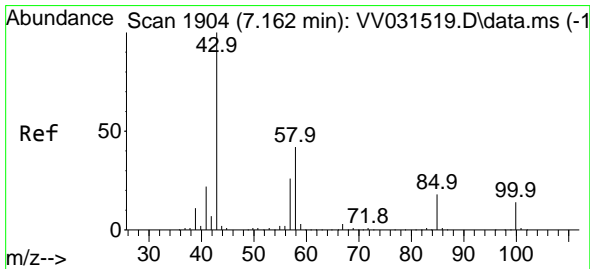
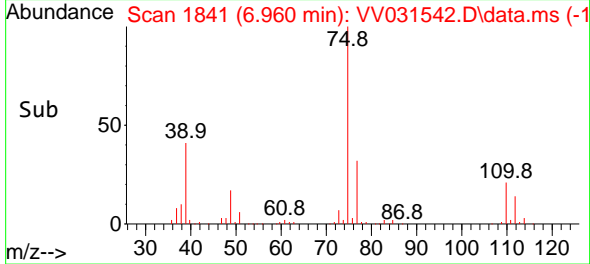
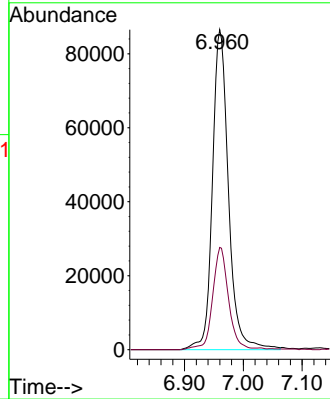
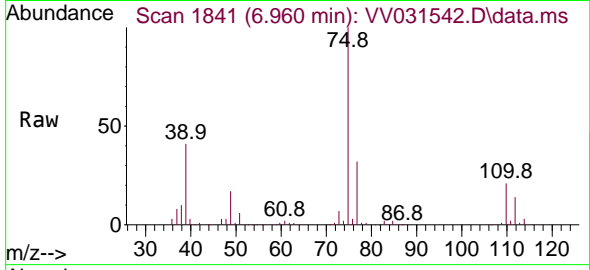




#39
 cis-1,3-Dichloropropene
 Concen: 48.112 ug/L
 RT: 6.960 min Scan# 1840
 Delta R.T. 0.003 min
 Lab File: VV031542.D
 Acq: 15 Jun 2023 19:28

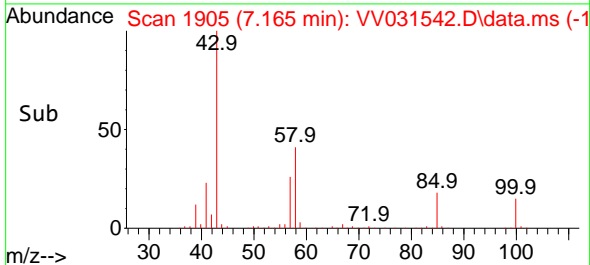
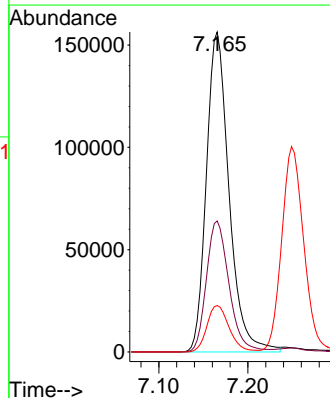
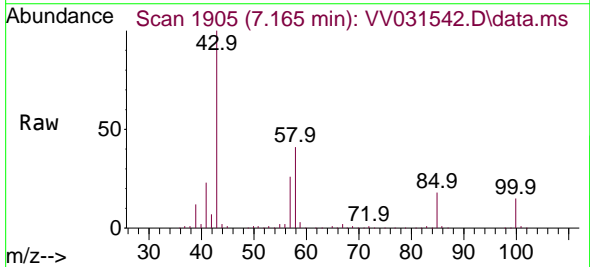
Instrument : MSVOA_V
 ClientSampleId : EXYT1MS

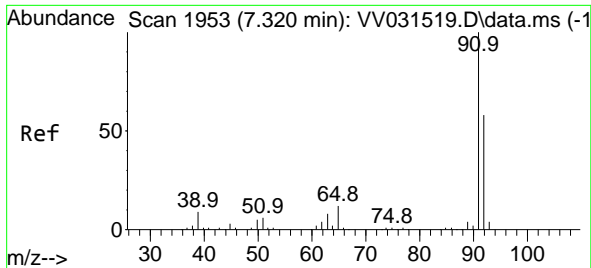
Tgt Ion: 75 Resp: 164100
 Ion Ratio Lower Upper
 75 100
 77 31.9 21.8 40.6



#40
 4-Methyl-2-pentanone
 Concen: 102.555 ug/L
 RT: 7.165 min Scan# 1905
 Delta R.T. 0.003 min
 Lab File: VV031542.D
 Acq: 15 Jun 2023 19:28

Tgt Ion: 43 Resp: 276697
 Ion Ratio Lower Upper
 43 100
 58 40.8 31.8 47.8
 100 14.3 11.1 16.7

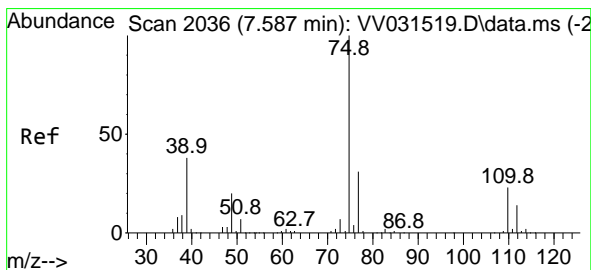
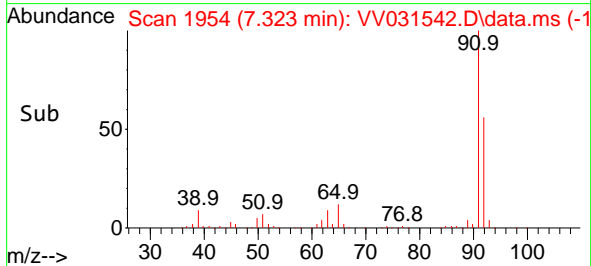
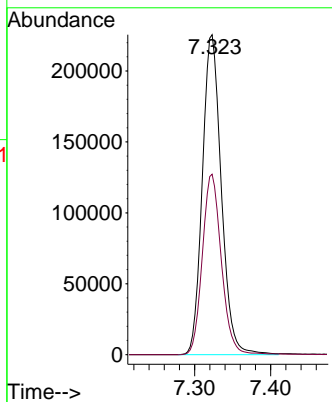
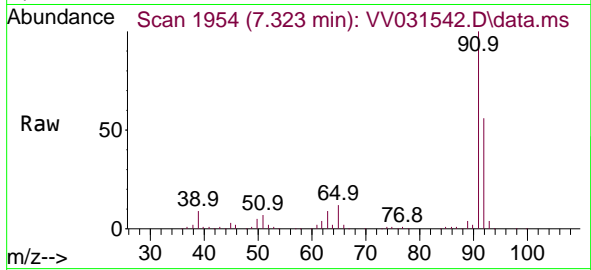




#42
 Toluene
 Concen: 48.250 ug/L
 RT: 7.323 min Scan# 1954
 Delta R.T. 0.003 min
 Lab File: VV031542.D
 Acq: 15 Jun 2023 19:28

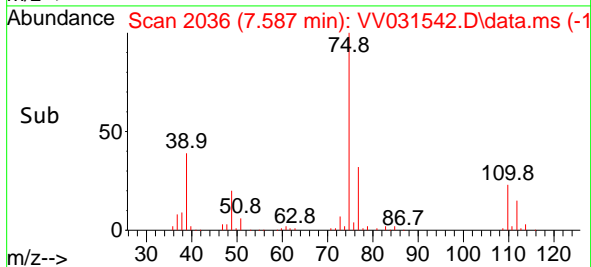
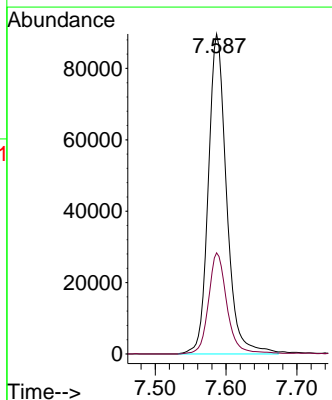
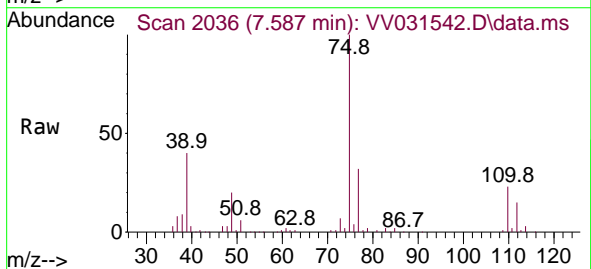
Instrument : MSVOA_V
 ClientSampleId : EXYT1MS

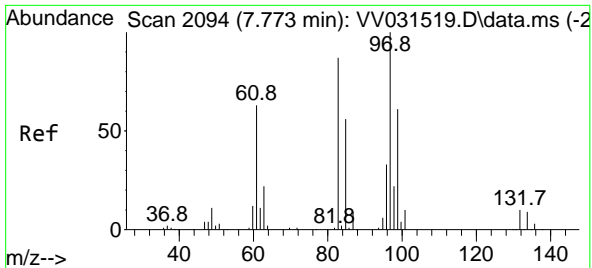
Tgt Ion: 91 Resp: 391453
 Ion Ratio Lower Upper
 91 100
 92 56.4 39.6 73.6



#44
 trans-1,3-Dichloropropene
 Concen: 48.360 ug/L
 RT: 7.587 min Scan# 2036
 Delta R.T. 0.000 min
 Lab File: VV031542.D
 Acq: 15 Jun 2023 19:28

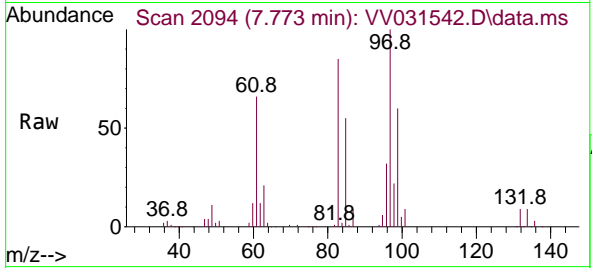
Tgt Ion: 75 Resp: 160633
 Ion Ratio Lower Upper
 75 100
 77 31.6 22.1 41.1





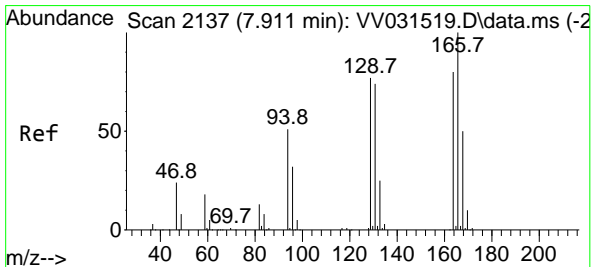
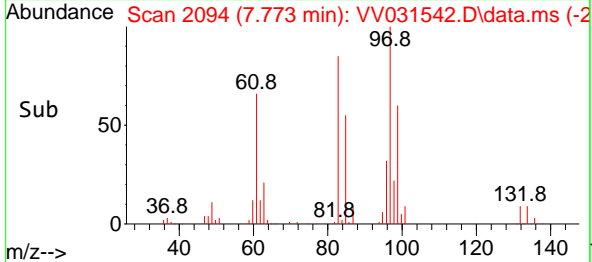
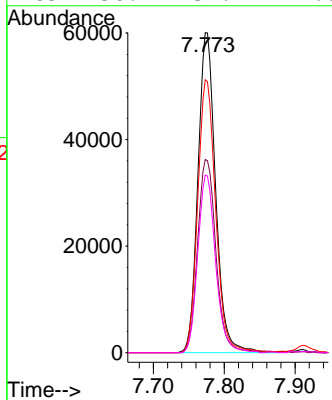
#45
 1,1,2-Trichloroethane
 Concen: 48.026 ug/L
 RT: 7.773 min Scan# 2094
 Delta R.T. 0.000 min
 Lab File: VV031542.D
 Acq: 15 Jun 2023 19:28

Instrument : MSVOA_V
 ClientSampleId : EXYT1MS



Tgt Ion: 97 Resp: 104244

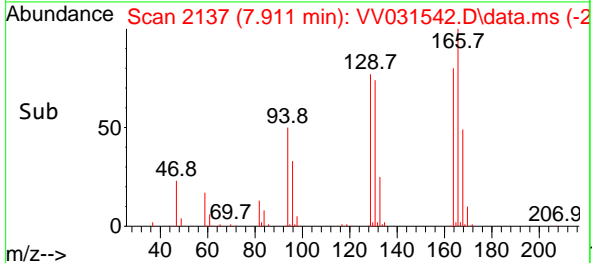
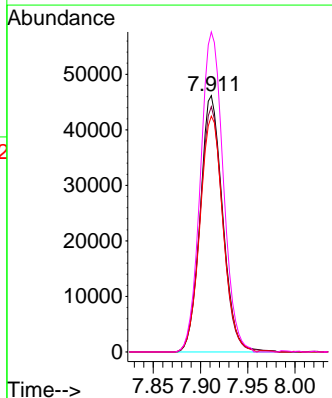
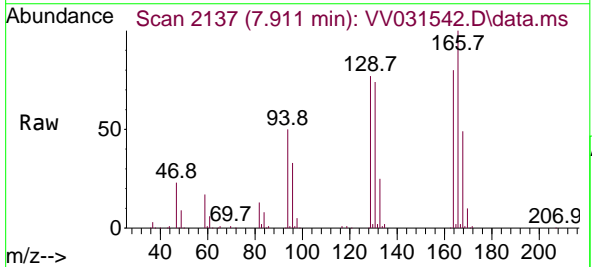
Ion	Ratio	Lower	Upper
97	100		
99	60.4	43.7	81.1
83	85.3	60.9	113.1
85	56.4	39.2	72.8

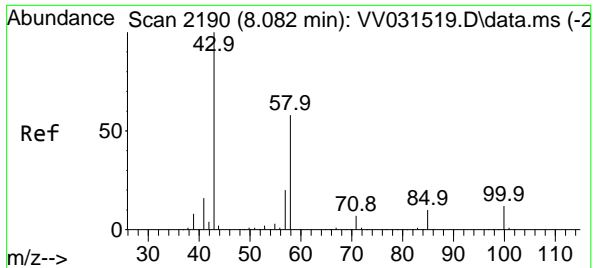


#46
 Tetrachloroethene
 Concen: 46.594 ug/L
 RT: 7.911 min Scan# 2137
 Delta R.T. 0.000 min
 Lab File: VV031542.D
 Acq: 15 Jun 2023 19:28

Tgt Ion: 164 Resp: 76465

Ion	Ratio	Lower	Upper
164	100		
129	97.8	68.4	127.0
131	94.5	67.6	125.6
166	127.7	91.3	169.5



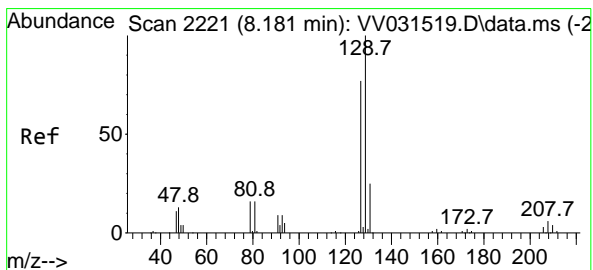
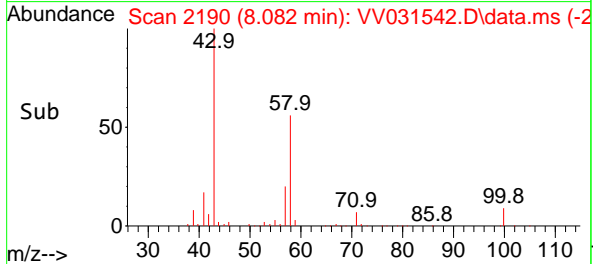
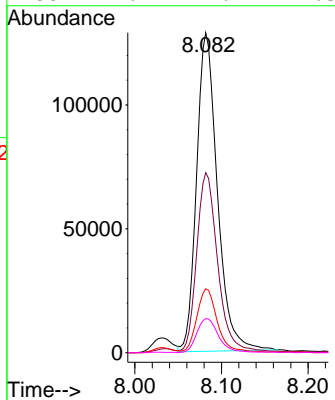
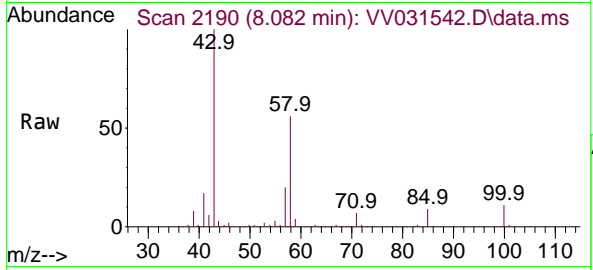


#48
 2-Hexanone
 Concen: 99.624 ug/L
 RT: 8.082 min Scan# 2190
 Delta R.T. 0.000 min
 Lab File: VV031542.D
 Acq: 15 Jun 2023 19:28

Instrument : MSVOA_V
 ClientSampleId : EXYT1MS

Tgt Ion: 43 Resp: 214670

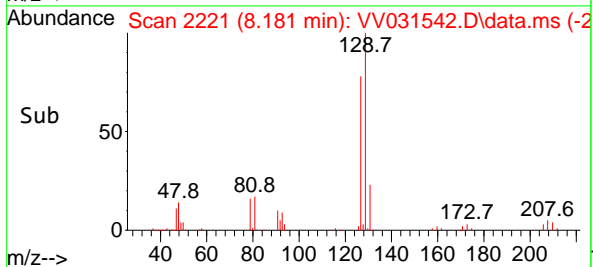
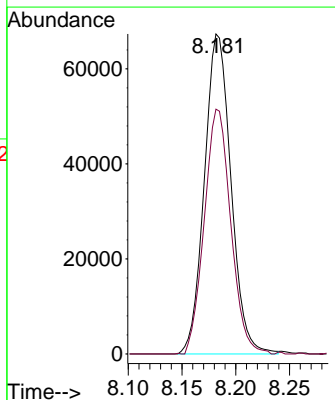
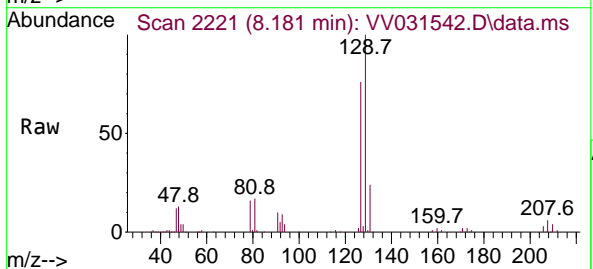
Ion	Ratio	Lower	Upper
43	100		
58	57.0	46.7	70.1
57	19.6	15.5	23.3
100	11.2	9.7	14.5

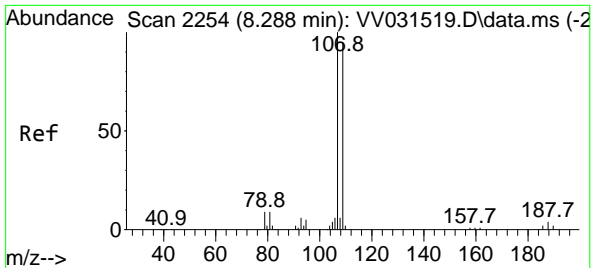


#49
 Dibromochloromethane
 Concen: 48.091 ug/L
 RT: 8.181 min Scan# 2221
 Delta R.T. 0.000 min
 Lab File: VV031542.D
 Acq: 15 Jun 2023 19:28

Tgt Ion: 129 Resp: 116016

Ion	Ratio	Lower	Upper
129	100		
127	78.2	55.8	103.6



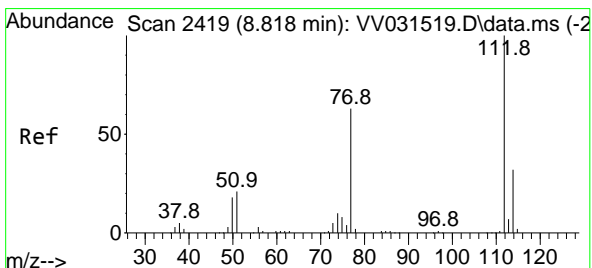
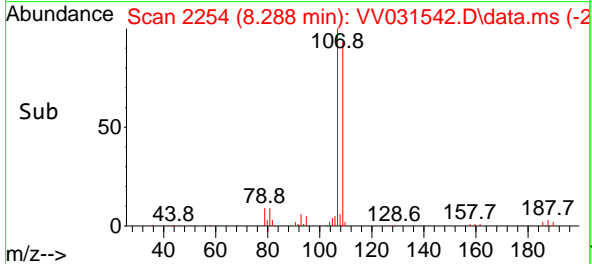
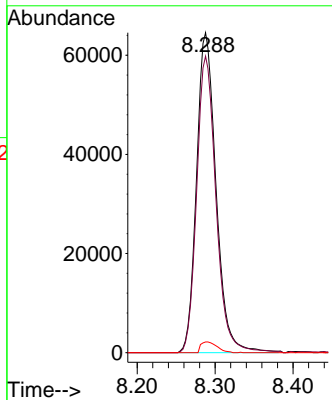
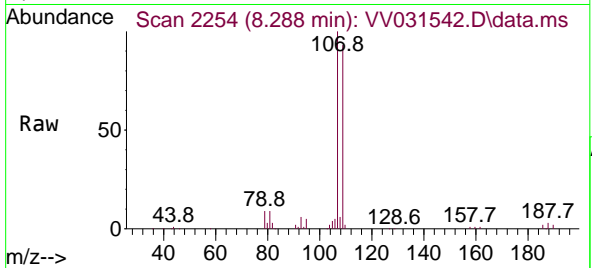


#50
 1,2-Dibromoethane
 Concen: 48.639 ug/L
 RT: 8.288 min Scan# 21
 Delta R.T. 0.000 min
 Lab File: VV031542.D
 Acq: 15 Jun 2023 19:28

Instrument :
 MSVOA_V
 ClientSampleId :
 EXYT1MS

Tgt Ion:107 Resp: 112415

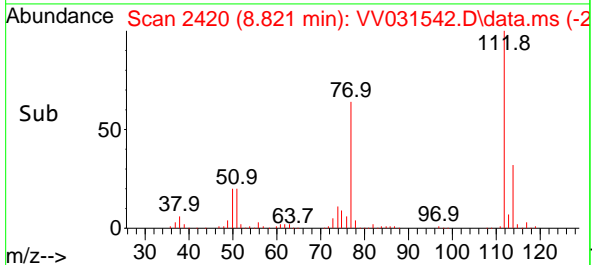
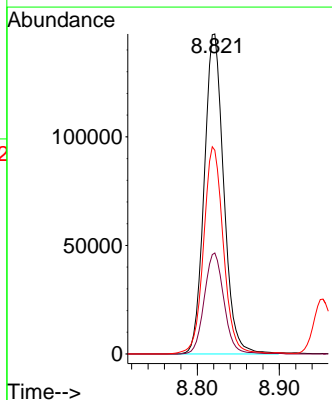
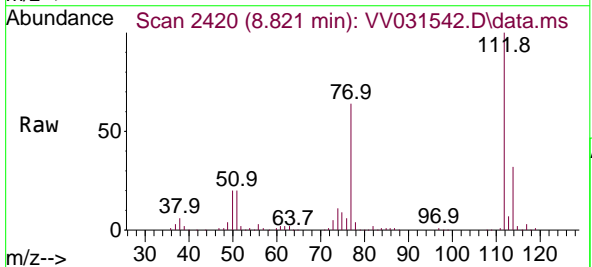
Ion	Ratio	Lower	Upper
107	100		
109	94.8	65.7	122.1
188	3.4	2.6	4.0

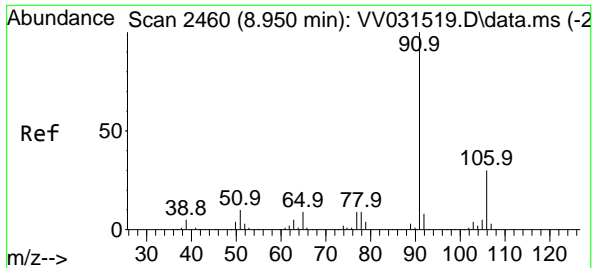


#51
 Chlorobenzene
 Concen: 45.463 ug/L
 RT: 8.821 min Scan# 2420
 Delta R.T. 0.003 min
 Lab File: VV031542.D
 Acq: 15 Jun 2023 19:28

Tgt Ion:112 Resp: 244288

Ion	Ratio	Lower	Upper
112	100		
114	31.5	22.9	42.5
77	63.6	52.5	78.7

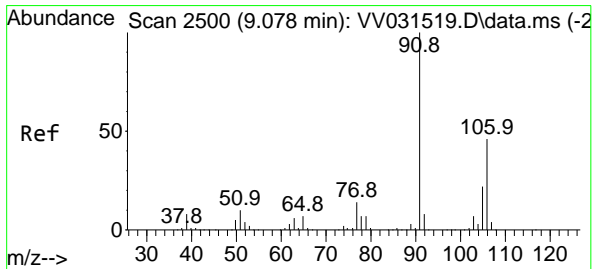
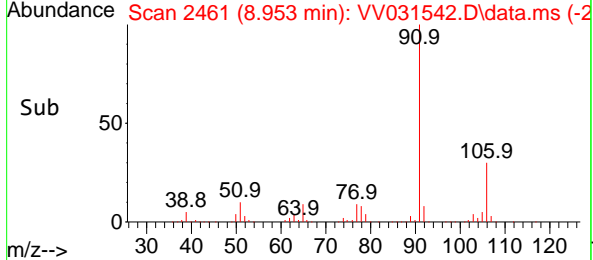
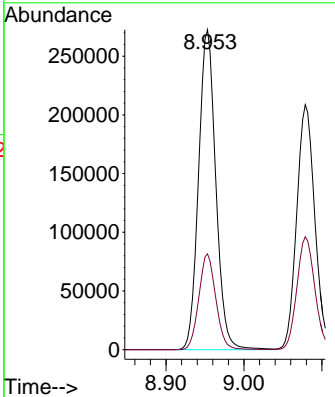
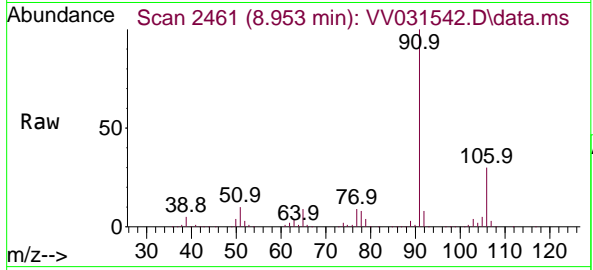




#52
 Ethylbenzene
 Concen: 46.230 ug/L
 RT: 8.953 min Scan# 2461
 Delta R.T. 0.003 min
 Lab File: VV031542.D
 Acq: 15 Jun 2023 19:28

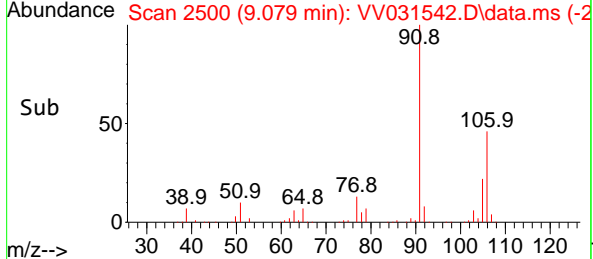
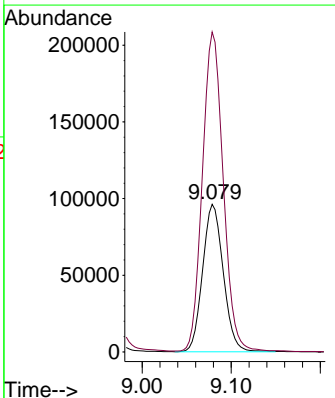
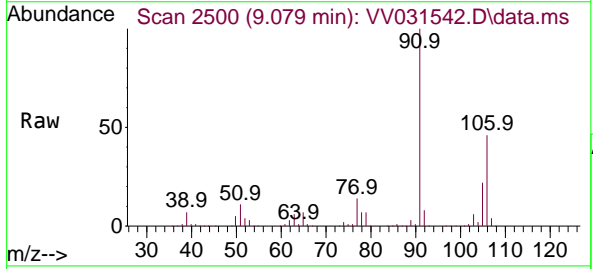
Instrument : MSVOA_V
 ClientSampleId : EXYT1MS

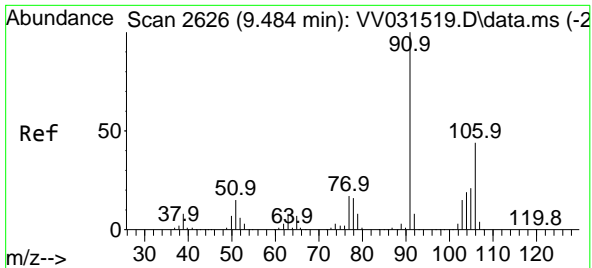
Tgt Ion: 91 Resp: 418515
 Ion Ratio Lower Upper
 91 100
 106 29.9 20.8 38.6



#53
 m,p-Xylene
 Concen: 46.657 ug/L
 RT: 9.079 min Scan# 2500
 Delta R.T. 0.000 min
 Lab File: VV031542.D
 Acq: 15 Jun 2023 19:28

Tgt Ion:106 Resp: 154680
 Ion Ratio Lower Upper
 106 100
 91 216.8 149.0 276.6

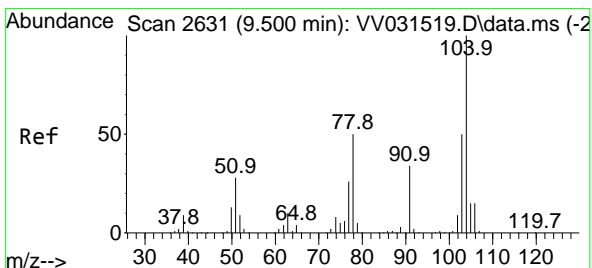
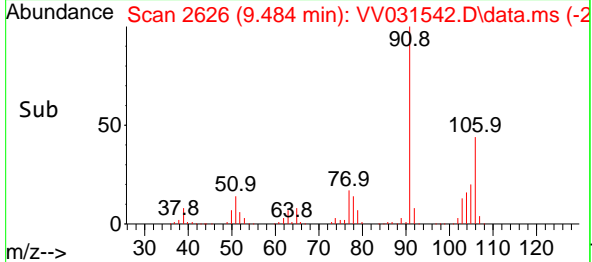
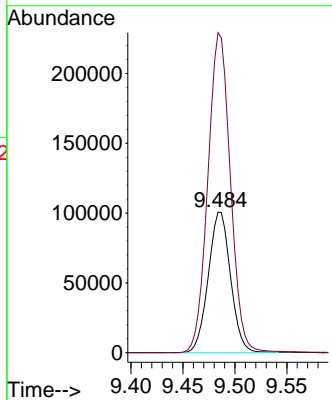
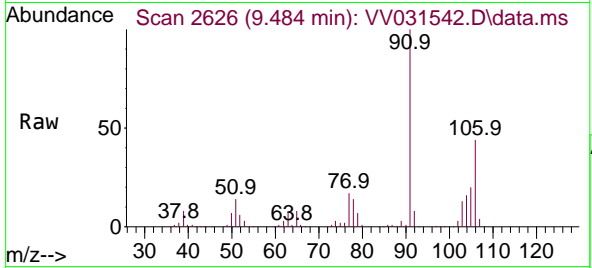




#54
 o-Xylene
 Concen: 47.793 ug/L
 RT: 9.484 min Scan# 2626
 Delta R.T. 0.000 min
 Lab File: VV031542.D
 Acq: 15 Jun 2023 19:28

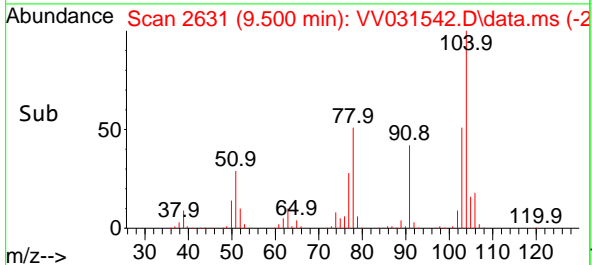
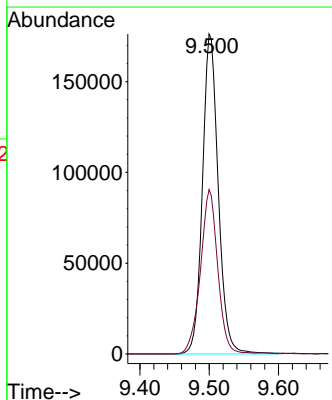
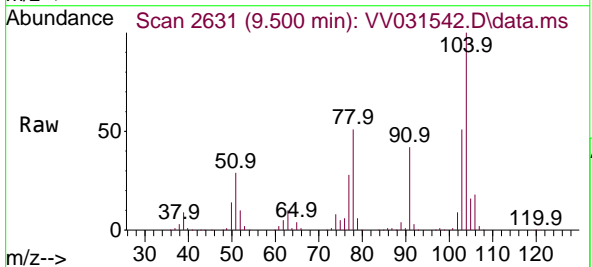
Instrument : MSVOA_V
 ClientSampleId : EXYT1MS

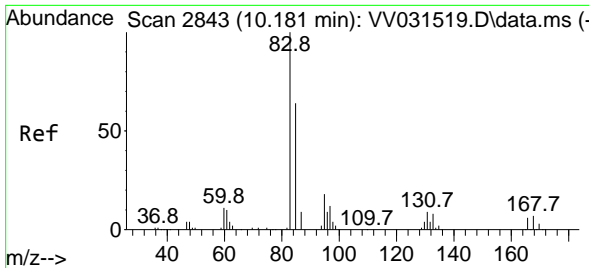
Tgt Ion:106 Resp: 150361
 Ion Ratio Lower Upper
 106 100
 91 227.4 161.3 299.7



#55
 Styrene
 Concen: 49.748 ug/L
 RT: 9.500 min Scan# 2631
 Delta R.T. 0.000 min
 Lab File: VV031542.D
 Acq: 15 Jun 2023 19:28

Tgt Ion:104 Resp: 279518
 Ion Ratio Lower Upper
 104 100
 78 51.3 35.1 65.3



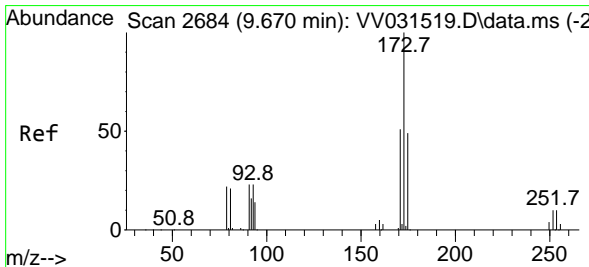
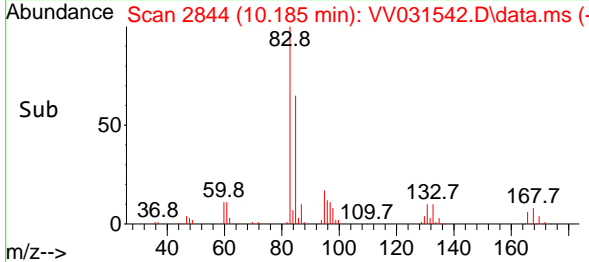
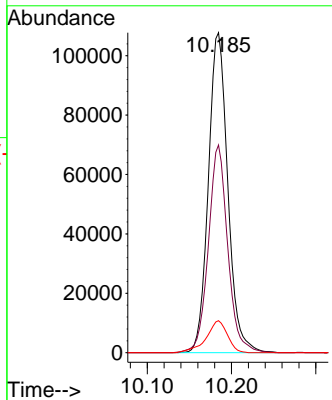
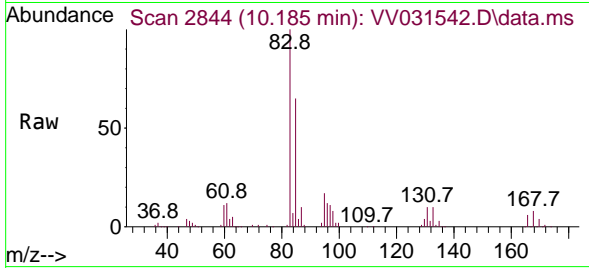


#57
 1,1,2-Tetrachloroethane
 Concen: 48.712 ug/L
 RT: 10.185 min Scan# 2843
 Delta R.T. 0.003 min
 Lab File: VV031542.D
 Acq: 15 Jun 2023 19:28

Instrument :
 MSVOA_V
 ClientSampleId :
 EXYT1MS

Tgt Ion: 83 Resp: 172759

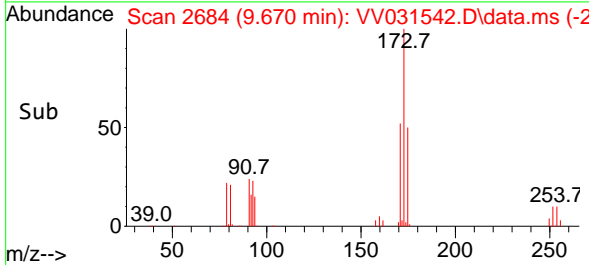
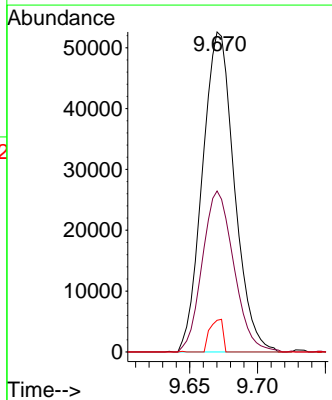
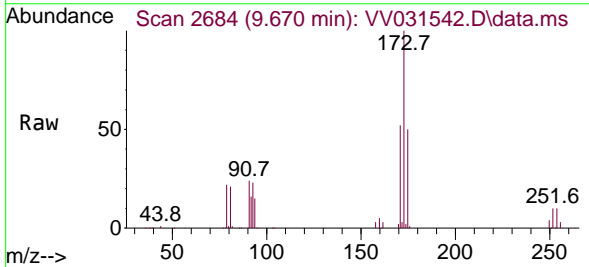
Ion	Ratio	Lower	Upper
83	100		
85	64.9	43.1	80.1
131	13.2	10.6	16.0

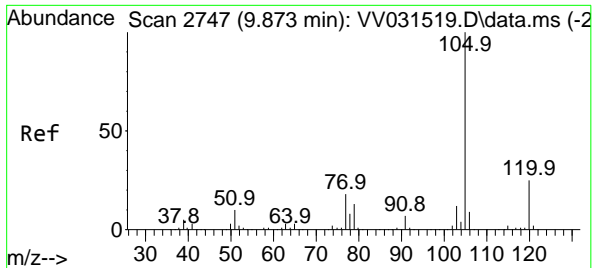


#59
 Bromoform
 Concen: 50.115 ug/L
 RT: 9.670 min Scan# 2684
 Delta R.T. 0.000 min
 Lab File: VV031542.D
 Acq: 15 Jun 2023 19:28

Tgt Ion: 173 Resp: 85962

Ion	Ratio	Lower	Upper
173	100		
175	49.7	37.7	56.5
254	4.2	0.1	0.1

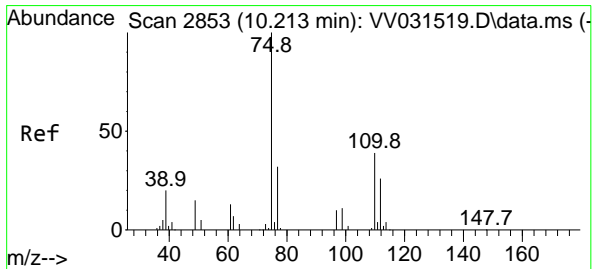
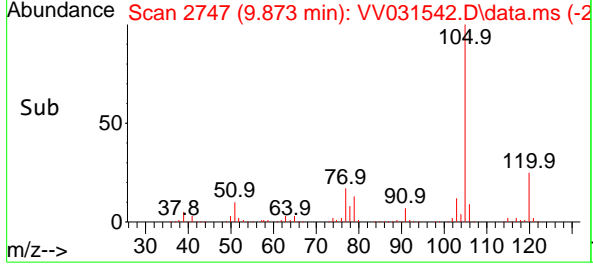
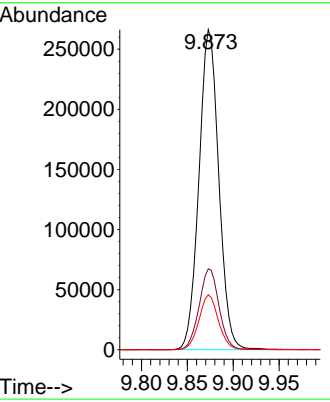
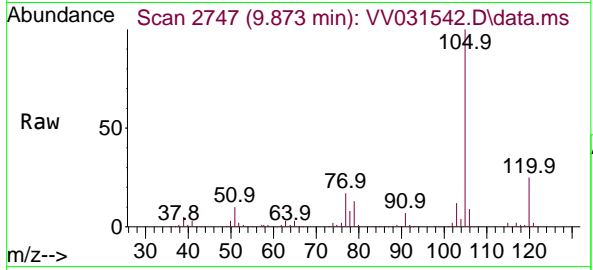




#60
 Isopropylbenzene
 Concen: 45.466 ug/L
 RT: 9.873 min Scan# 21
 Delta R.T. 0.000 min
 Lab File: VV031542.D
 Acq: 15 Jun 2023 19:28

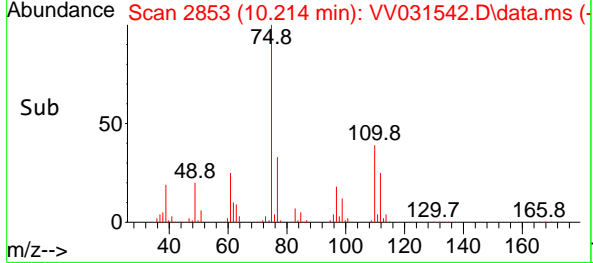
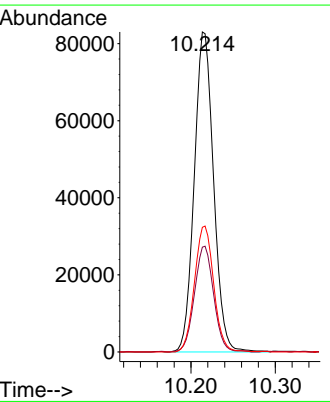
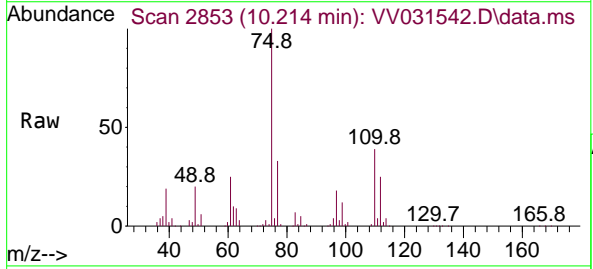
Instrument : MSVOA_V
 ClientSampleId : EXYT1MS

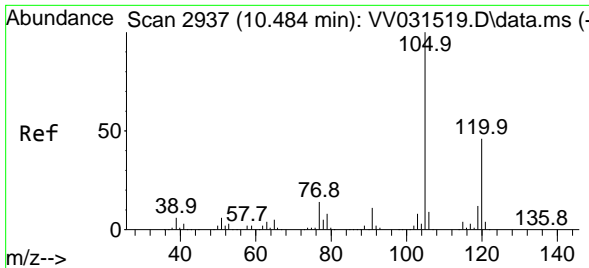
Tgt Ion	Resp	Lower	Upper
105	401092		
105	100		
120	25.4	20.2	30.2
77	16.9	13.5	20.3



#61
 1,2,3-Trichloropropane
 Concen: 48.511 ug/L
 RT: 10.214 min Scan# 2853
 Delta R.T. 0.000 min
 Lab File: VV031542.D
 Acq: 15 Jun 2023 19:28

Tgt Ion	Resp	Lower	Upper
75	132587		
75	100		
77	32.8	25.4	38.0
110	39.2	31.3	46.9

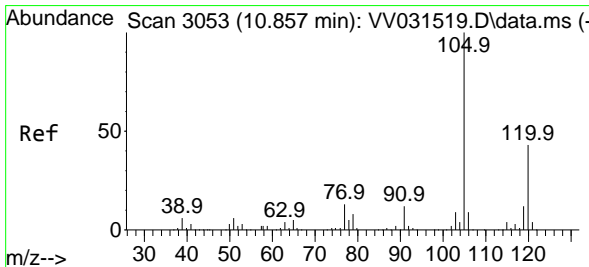
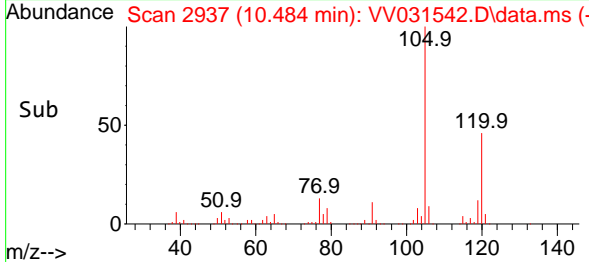
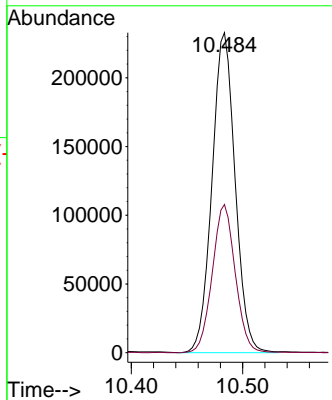
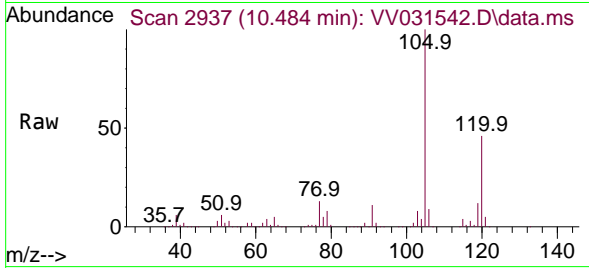




#62
 1,3,5-Trimethylbenzene
 Concen: 46.079 ug/L
 RT: 10.484 min Scan# 2937
 Delta R.T. 0.000 min
 Lab File: VV031542.D
 Acq: 15 Jun 2023 19:28

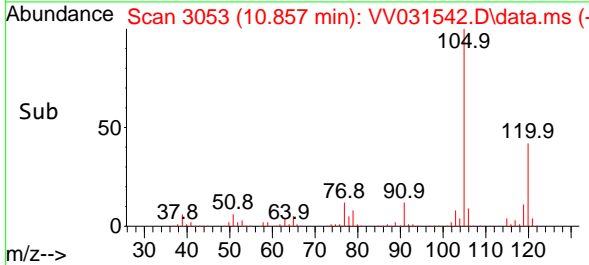
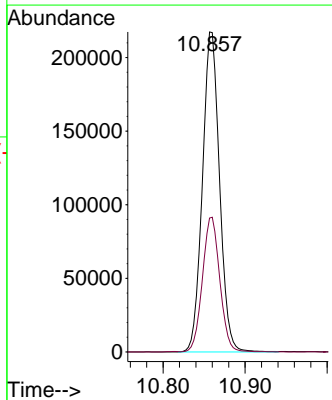
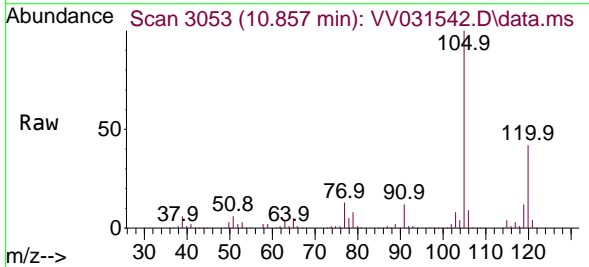
Instrument :
 MSVOA_V
 ClientSampleId :
 EXYT1MS

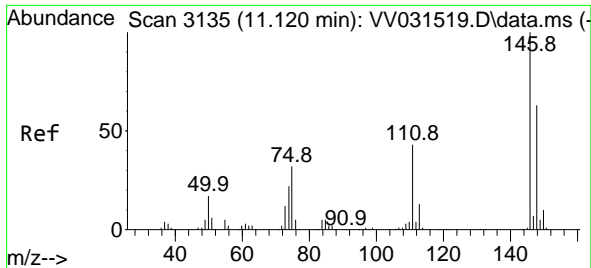
Tgt Ion:105 Resp: 335973
 Ion Ratio Lower Upper
 105 100
 120 45.9 36.2 54.2



#63
 1,2,4-Trimethylbenzene
 Concen: 46.468 ug/L
 RT: 10.857 min Scan# 3053
 Delta R.T. 0.000 min
 Lab File: VV031542.D
 Acq: 15 Jun 2023 19:28

Tgt Ion:105 Resp: 315689
 Ion Ratio Lower Upper
 105 100
 120 42.5 33.4 50.2

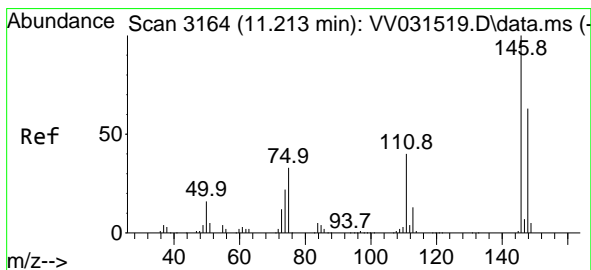
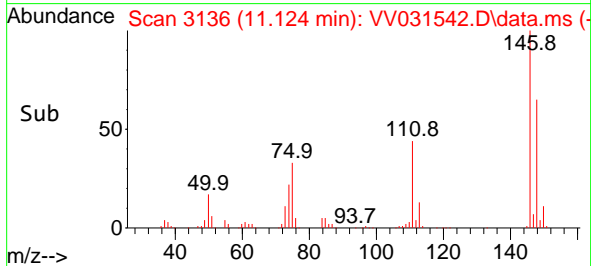
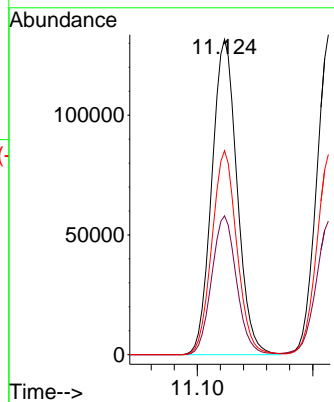
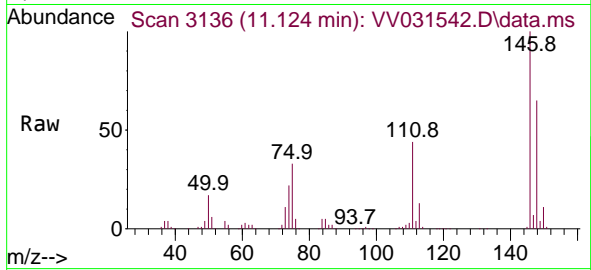




#64
 1,3-Dichlorobenzene
 Concen: 45.225 ug/L
 RT: 11.124 min Scan# 3135
 Delta R.T. 0.003 min
 Lab File: VV031542.D
 Acq: 15 Jun 2023 19:28

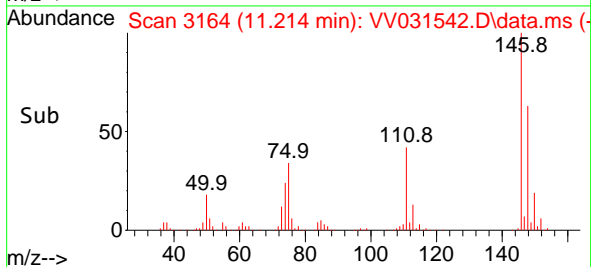
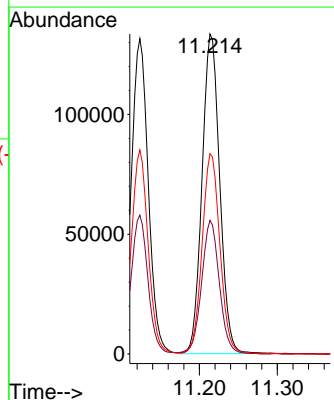
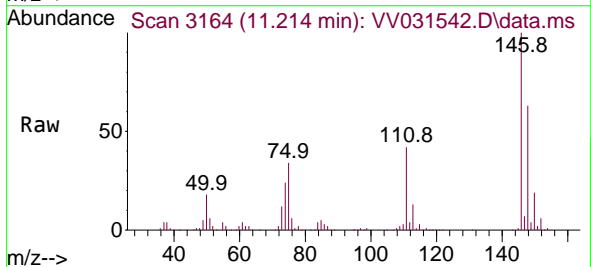
Instrument :
 MSVOA_V
 ClientSampleId :
 EXYT1MS

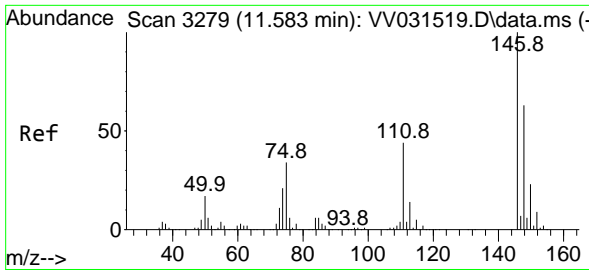
Tgt Ion:146 Resp: 200023
 Ion Ratio Lower Upper
 146 100
 111 44.0 30.4 56.5
 148 64.7 44.7 83.1



#65
 1,4-Dichlorobenzene
 Concen: 44.600 ug/L
 RT: 11.214 min Scan# 3164
 Delta R.T. 0.000 min
 Lab File: VV031542.D
 Acq: 15 Jun 2023 19:28

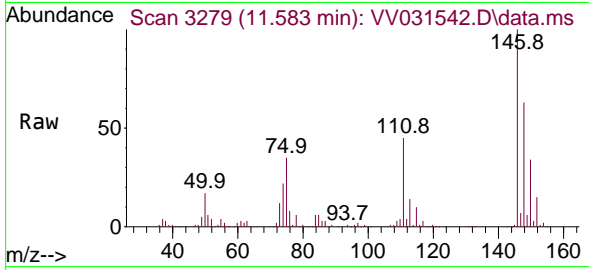
Tgt Ion:146 Resp: 210200
 Ion Ratio Lower Upper
 146 100
 111 41.7 27.9 51.7
 148 62.6 43.6 81.0



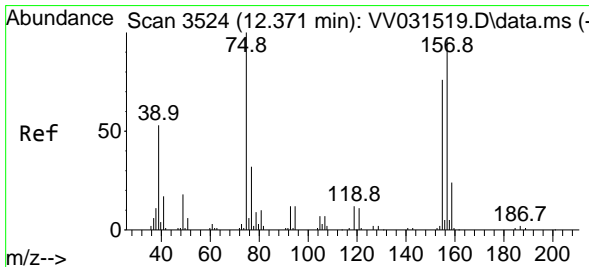
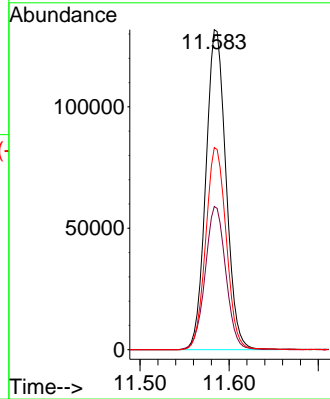
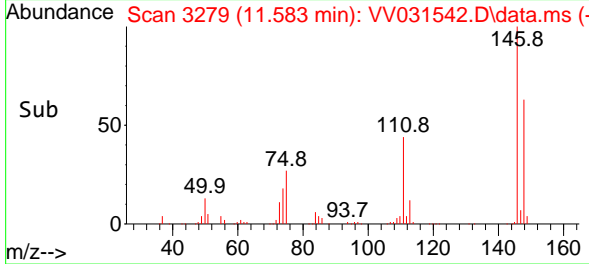


#67
 1,2-Dichlorobenzene
 Concen: 46.276 ug/L
 RT: 11.583 min Scan# 31
 Delta R.T. 0.000 min
 Lab File: VV031542.D
 Acq: 15 Jun 2023 19:28

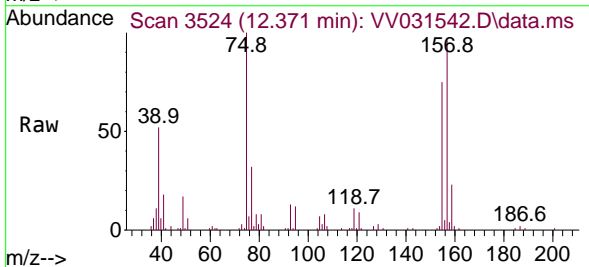
Instrument :
 MSVOA_V
 ClientSampleId :
 EXYT1MS



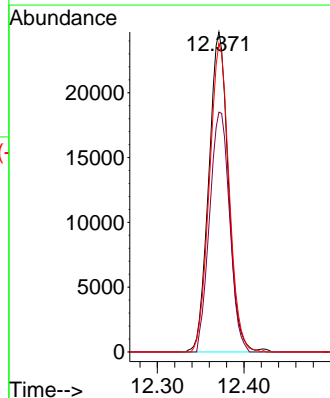
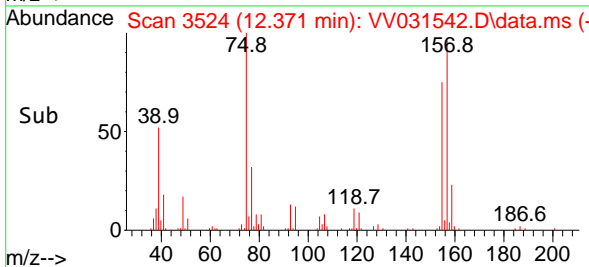
Tgt Ion:146 Resp: 206575
 Ion Ratio Lower Upper
 146 100
 111 44.7 35.9 53.9
 148 63.1 52.6 78.8

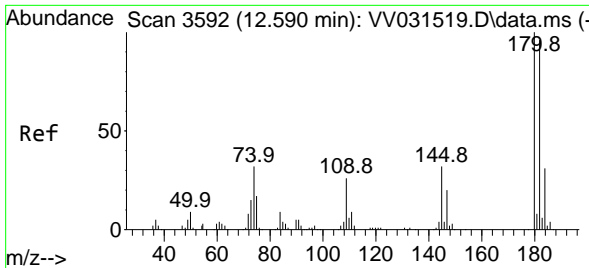


#68
 1,2-Dibromo-3-chloropropane
 Concen: 47.866 ug/L
 RT: 12.371 min Scan# 3524
 Delta R.T. 0.000 min
 Lab File: VV031542.D
 Acq: 15 Jun 2023 19:28



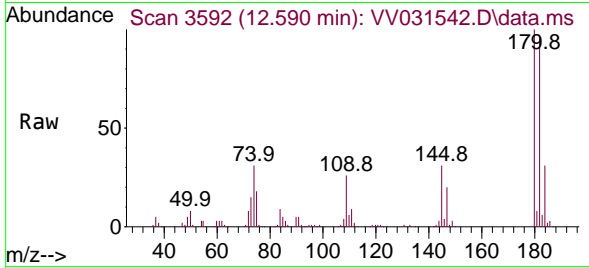
Tgt Ion: 75 Resp: 38829
 Ion Ratio Lower Upper
 75 100
 155 74.9 63.2 94.8
 157 100.7 85.3 127.9



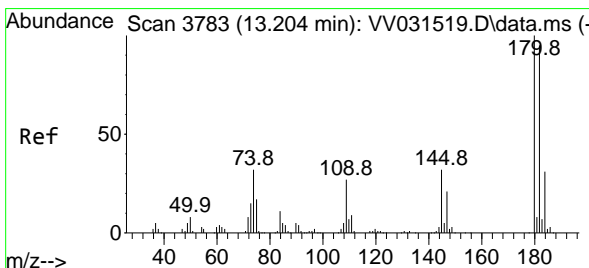
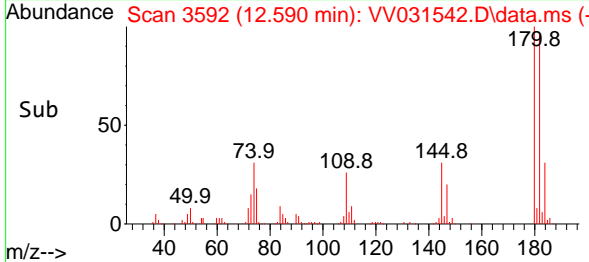
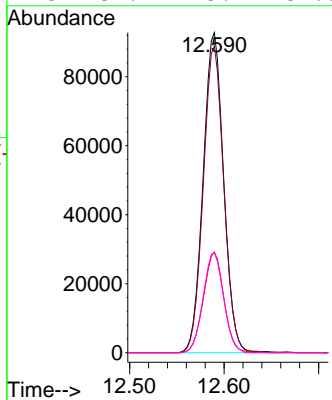


#69
 1,3,5-Trichlorobenzene
 Concen: 41.490 ug/L
 RT: 12.590 min Scan# 31
 Delta R.T. 0.000 min
 Lab File: VV031542.D
 Acq: 15 Jun 2023 19:28

Instrument :
 MSVOA_V
 ClientSampleId :
 EXYT1MS

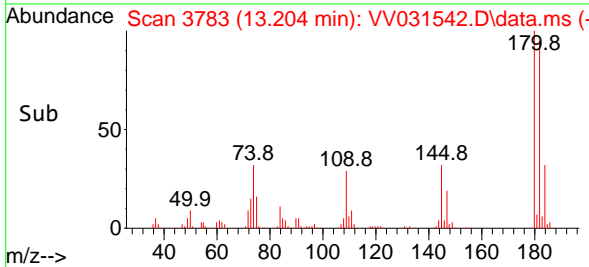
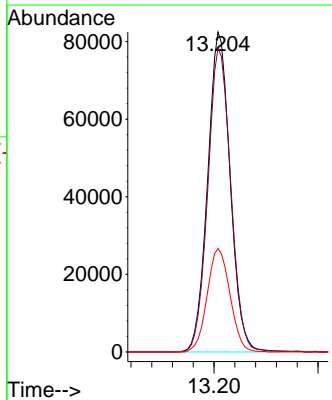
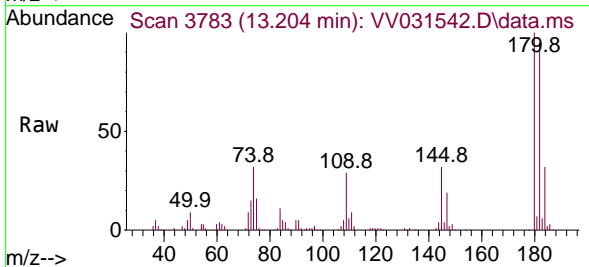


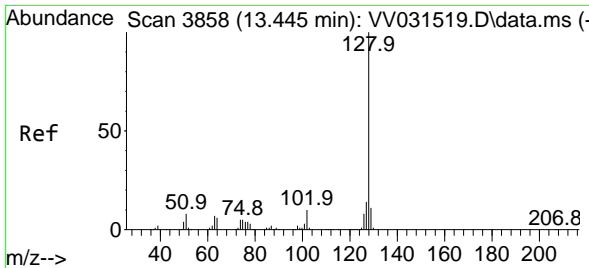
Tgt Ion:180 Resp: 139827
 Ion Ratio Lower Upper
 180 100
 182 95.5 76.6 115.0
 184 31.1 24.7 37.1
 145 31.2 25.2 37.8



#70
 1,2,4-trichlorobenzene
 Concen: 41.958 ug/L
 RT: 13.204 min Scan# 3783
 Delta R.T. 0.000 min
 Lab File: VV031542.D
 Acq: 15 Jun 2023 19:28

Tgt Ion:180 Resp: 123944
 Ion Ratio Lower Upper
 180 100
 182 96.8 77.7 116.5
 145 32.7 26.1 39.1

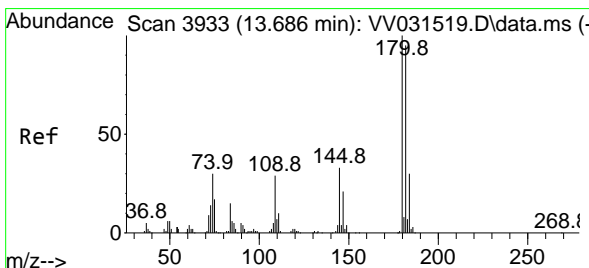
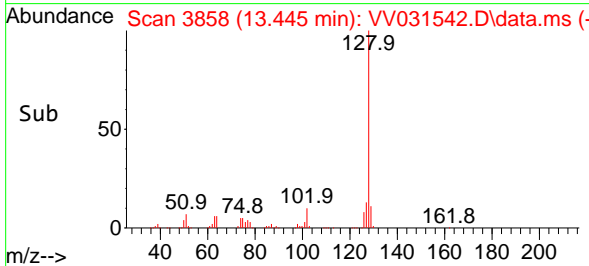
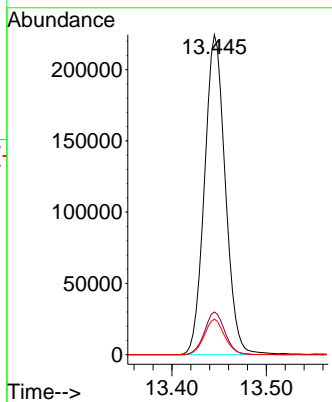
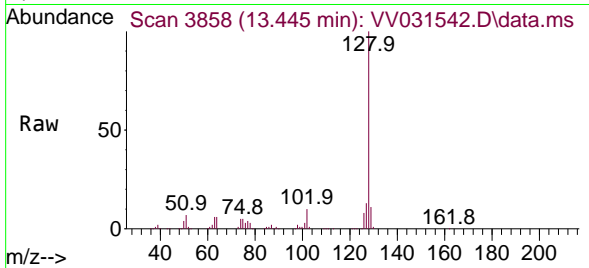




#71
 Naphthalene
 Concen: 45.853 ug/L
 RT: 13.445 min Scan# 3858
 Delta R.T. 0.000 min
 Lab File: VV031542.D
 Acq: 15 Jun 2023 19:28

Instrument :
 MSVOA_V
 ClientSampleId :
 EXYT1MS

Tgt Ion	Resp	Lower	Upper
128	100		
127	13.1	10.6	16.0
129	10.9	8.6	13.0



#72
 1,2,3-Trichlorobenzene
 Concen: 43.487 ug/L
 RT: 13.686 min Scan# 3933
 Delta R.T. 0.000 min
 Lab File: VV031542.D
 Acq: 15 Jun 2023 19:28

Tgt Ion	Resp	Lower	Upper
180	100		
182	94.4	74.0	111.0
145	34.2	26.2	39.2

