

Data Path : Z:\VOASRV\HPCHEM1\MSVOA V\DATA\VV061620\
 Data File : VV016952.D
 Acq On : 16 Jun 2020 11:33
 Operator : SY/MD
 Sample : VSTDCCC050EC
 Misc : 5.0mL/MSVOA V/WATER
 ALS Vial : 6 Sample Multiplier: 1

Instrument :
 MSVOA_V
 ClientSampled :

Quant Time: Jun 17 00:57:40 2020
 Quant Method : Z:\VOASRV\HPCHEM1\MSVOA_V\METHOD\SOMVLM060820WMA.M
 Quant Title : VOC Analysis
 QLast Update : Wed Jun 17 00:55:26 2020
 Response via : Initial Calibration

Internal Standards	R.T.	QIon	Response	Conc	Units	Dev(Min)
1) 1,4-Difluorobenzene	5.64	114	326171	50.00	ug/L	0.00
28) Chlorobenzene-d5	8.87	117	313825	50.00	ug/L	0.00
60) 1,4-Dichlorobenzene-d4	11.27	152	170705	50.00	ug/L	0.00

System Monitoring Compounds

4) Vinyl Chloride-d3	1.32	65	82417	35.81	ug/L	0.00
Spiked Amount	50.000	Range	60 - 135	Recovery	=	71.62%
7) Chloroethane-d5	1.58	69	66187	47.93	ug/L	0.00
Spiked Amount	50.000	Range	70 - 130	Recovery	=	95.86%
11) 1,1-Dichloroethene-d2	2.12	63	166830	43.17	ug/L	0.00
Spiked Amount	50.000	Range	60 - 125	Recovery	=	86.34%
21) 2-Butanone-d5	3.89	46	175620	103.10	ug/L	0.00
Spiked Amount	100.000	Range	40 - 130	Recovery	=	103.10%
24) Chloroform-d	4.37	84	225517	48.19	ug/L	0.00
Spiked Amount	50.000	Range	70 - 125	Recovery	=	96.38%
26) 1,2-Dichloroethane-d4	5.05	65	158712	49.86	ug/L	0.00
Spiked Amount	50.000	Range	70 - 125	Recovery	=	99.72%
32) Benzene-d6	5.07	84	415241	45.90	ug/L	0.00
Spiked Amount	50.000	Range	70 - 125	Recovery	=	91.80%
36) 1,2-Dichloropropane-d6	6.09	67	131817	46.75	ug/L	0.00
Spiked Amount	50.000	Range	70 - 120	Recovery	=	93.50%
41) Toluene-d8	7.33	98	385659	46.46	ug/L	0.00
Spiked Amount	50.000	Range	80 - 120	Recovery	=	92.92%
43) trans-1,3-Dichloropropene-	7.64	79	72908	49.64	ug/L	0.00
Spiked Amount	50.000	Range	60 - 125	Recovery	=	99.28%
47) 2-Hexanone-d5	8.11	63	113394	92.24	ug/L	0.00
Spiked Amount	100.000	Range	45 - 130	Recovery	=	92.24%
57) 1,1,2,2-Tetrachloroethane-	10.23	84	178835	47.91	ug/L	0.00
Spiked Amount	50.000	Range	65 - 120	Recovery	=	95.82%
64) 1,2-Dichlorobenzene-d4	11.65	152	170755	46.87	ug/L	0.00
Spiked Amount	50.000	Range	80 - 120	Recovery	=	93.74%

Target Compounds

Target Compounds	R.T.	QIon	Response	Conc	Units	Ovalue
2) Dichlorodifluoromethane	1.14	85	115385	44.620	ug/L	98
3) Chloromethane	1.25	50	109219	46.185	ug/L	100
5) Vinyl chloride	1.32	62	99460	42.769	ug/L	99
6) Bromomethane	1.53	94	61087	63.070	ug/L	99
8) Chloroethane	1.59	64	60251	52.450	ug/L	99
9) Trichlorofluoromethane	1.76	101	165003	47.413	ug/L	99
10) 1,1,2-Trichloro-1,2,2-trif	2.13	101	83293	48.031	ug/L	100
12) 1,1-Dichloroethene	2.13	96	76726	47.395	ug/L	91
13) Acetone	2.17	43	113737	101.337	ug/L	100
14) Carbon disulfide	2.31	76	256109	43.695	ug/L	100
15) Methyl Acetate	2.44	43	135063	53.991	ug/L	99
16) Methylene chloride	2.52	84	120866	50.880	ug/L	98
17) trans-1,2-Dichloroethene	2.78	96	107311	48.617	ug/L	95
18) Methyl tert-butyl Ether	2.78	73	401315	54.871	ug/L	99
19) 1,1-Dichloroethane	3.21	63	208791	50.253	ug/L	98
20) cis-1,2-Dichloroethene	3.93	96	123425	51.291	ug/L	99
22) 2-Butanone	3.98	43	188855	109.116	ug/L	98

Data Path : Z:\VOASRV\HPCHEM1\MSVOA V\DATA\VV061620\
 Data File : VV016952.D
 Acq On : 16 Jun 2020 11:33
 Operator : SY/MD
 Sample : VSTDCCC050EC
 Misc : 5.0mL/MSVOA V/WATER
 ALS Vial : 6 Sample Multiplier: 1

Instrument :
 MSVOA_V
 ClientSampleId :

Quant Time: Jun 17 00:57:40 2020
 Quant Method : Z:\VOASRV\HPCHEM1\MSVOA_V\METHOD\SOMVLM060820WMA.M
 Quant Title : VOC Analysis
 QLast Update : Wed Jun 17 00:55:26 2020
 Response via : Initial Calibration

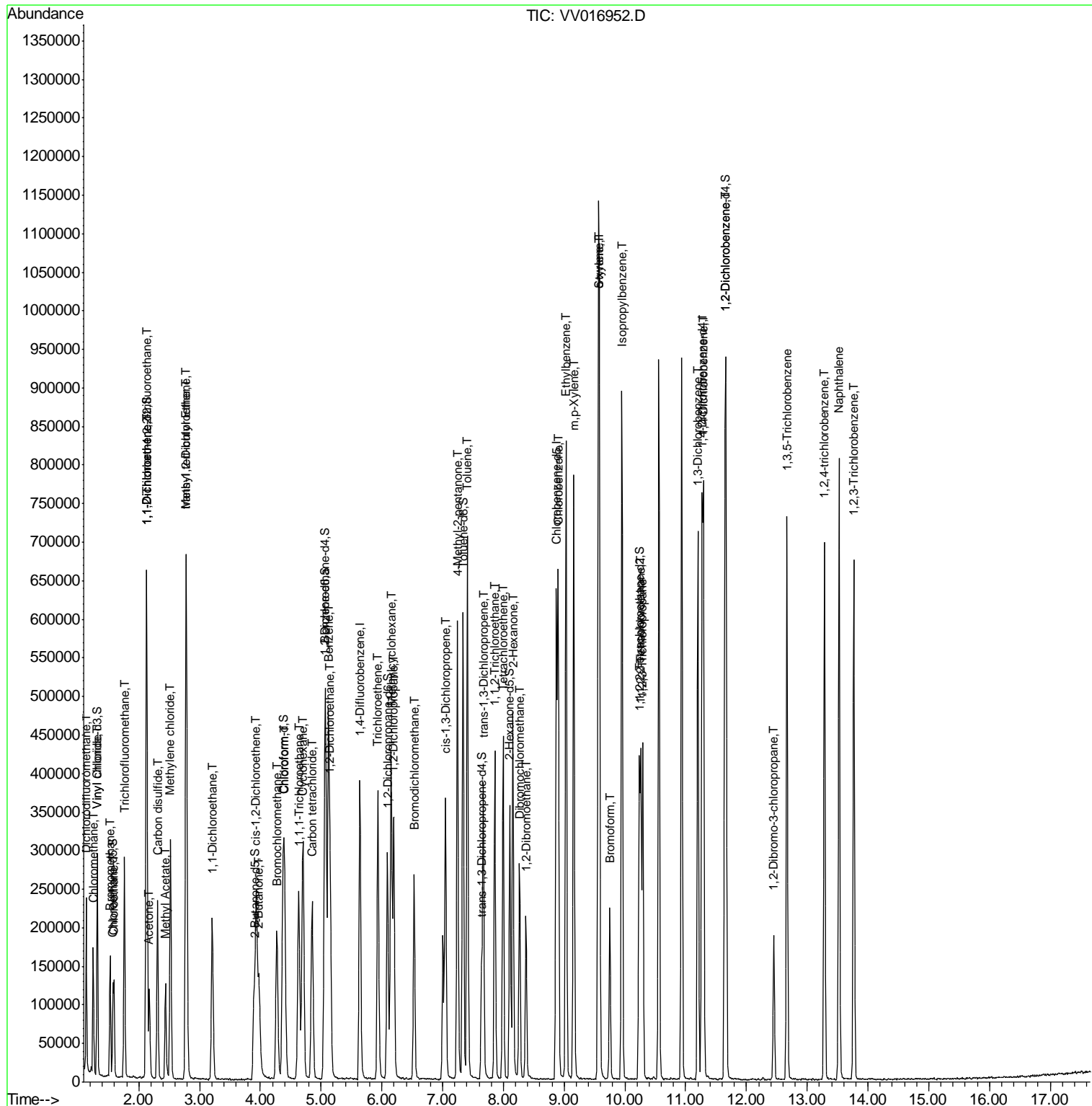
Internal Standards	R.T.	QIon	Response	Conc	Units	Dev(Min)
23) Bromochloromethane	4.27	128	67321	53.109	ug/L	98
25) Chloroform	4.40	83	225582	52.831	ug/L	96
27) 1,2-Dichloroethane	5.15	62	190307	53.167	ug/L	97
29) Cyclohexane	4.70	56	168141	43.116	ug/L	99
30) 1,1,1-Trichloroethane	4.63	97	196188	49.020	ug/L	100
31) Carbon tetrachloride	4.85	117	170618	49.279	ug/L	99
33) Benzene	5.12	78	449459	48.406	ug/L	100
34) Trichloroethene	5.94	95	127192	51.076	ug/L	99
35) Methylcyclohexane	6.15	83	177192	45.356	ug/L	97
37) 1,2-Dichloropropane	6.20	63	123194	51.019	ug/L	100
38) Bromodichloromethane	6.53	83	168932	52.555	ug/L	99
39) cis-1,3-Dichloropropene	7.05	75	195348	52.081	ug/L	99
40) 4-Methyl-2-pentanone	7.24	43	374517	109.455	ug/L	98
42) Toluene	7.41	91	494089	50.477	ug/L	99
44) trans-1,3-Dichloropropene	7.67	75	200164	54.892	ug/L	98
45) 1,1,2-Trichloroethane	7.86	97	123561	53.039	ug/L	98
46) Tetrachloroethene	7.99	164	95183	48.599	ug/L	99
48) 2-Hexanone	8.15	43	288130	108.604	ug/L	99
49) Dibromochloromethane	8.27	129	138469	55.590	ug/L	98
50) 1,2-Dibromoethane	8.37	107	130709	53.578	ug/L	98
51) Chlorobenzene	8.90	112	324594	50.828	ug/L	100
52) Ethylbenzene	9.03	91	549502	50.683	ug/L	98
53) m,p-Xylene	9.16	106	206964	51.270	ug/L	100
54) o-xylene	9.56	106	203556	51.128	ug/L	100
55) Styrene	9.58	104	359063	53.344	ug/L	98
56) Isopropylbenzene	9.95	105	548894	51.310	ug/L	99
58) 1,1,2,2-Tetrachloroethane	10.26	83	184357	51.614	ug/L	98
59) 1,2,3-Trichloropropane	10.29	75	162799	54.339	ug/L	100
61) Bromoform	9.75	173	96594	55.013	ug/L	98
62) 1,3-Dichlorobenzene	11.20	146	275323	50.922	ug/L	100
63) 1,4-Dichlorobenzene	11.29	146	277843	50.506	ug/L	98
65) 1,2-Dichlorobenzene	11.67	146	275143	50.780	ug/L	98
66) 1,2-Dibromo-3-chloropropan	12.45	75	43669	51.255	ug/L	95
67) 1,3,5-Trichlorobenzene	12.67	180	211473	52.452	ug/L	99
68) 1,2,4-trichlorobenzene	13.28	180	199037	53.822	ug/L	99
69) Naphthalene	13.52	128	596725	56.096	ug/L	100
70) 1,2,3-Trichlorobenzene	13.77	180	196100	54.195	ug/L	99

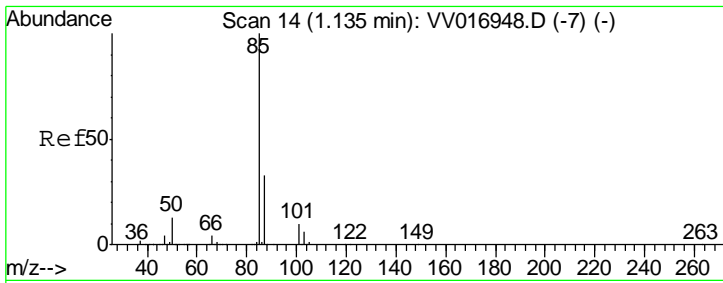
(#) = qualifier out of range (m) = manual integration (+) = signals summed

Data Path : Z:\VOASRV\HPCHEM1\MSVOA V\DATA\VV061620\
 Data File : VV016952.D
 Acq On : 16 Jun 2020 11:33
 Operator : SY/MD
 Sample : VSTDCCC050EC
 Misc : 5.0mL/MSVOA V/WATER
 ALS Vial : 6 Sample Multiplier: 1

Instrument :
 MSVOA_V
 ClientSampled :

Quant Time: Jun 17 00:57:40 2020
 Quant Method : Z:\VOASRV\HPCHEM1\MSVOA_V\METHOD\SOMVLM060820WMA.M
 Quant Title : VOC Analysis
 QLast Update : Wed Jun 17 00:55:26 2020
 Response via : Initial Calibration

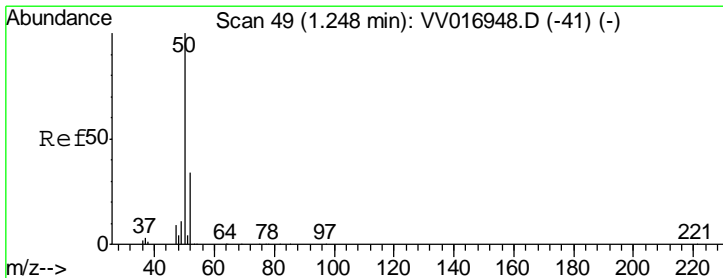
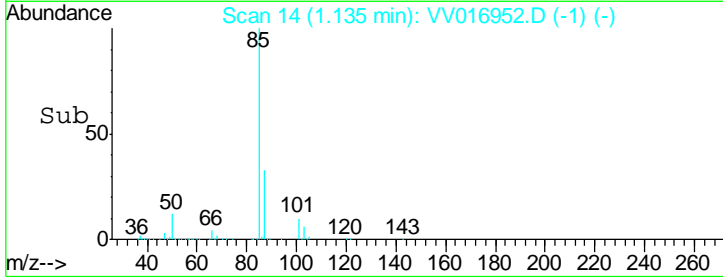
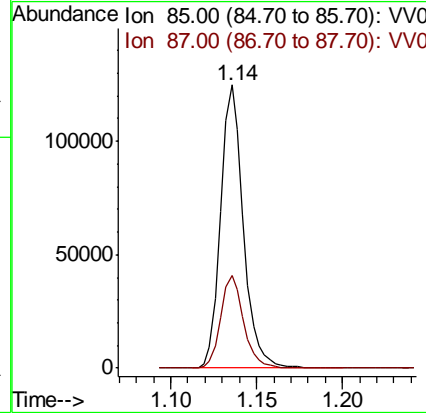
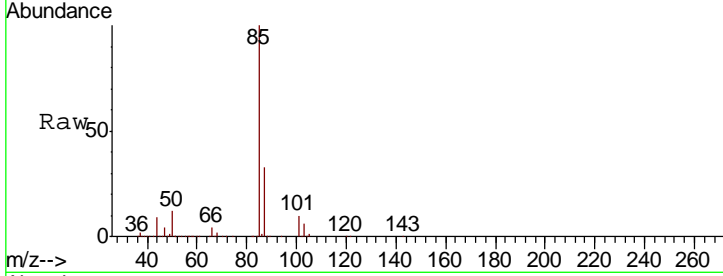




#2
 Dichlorodifluoromethane
 Concen: 44.620 ug/L
 RT: 1.14 min Scan# 14
 Delta R.T. 0.00 min
 Lab File: VV016952.D
 Acq: 16 Jun 2020 11:33

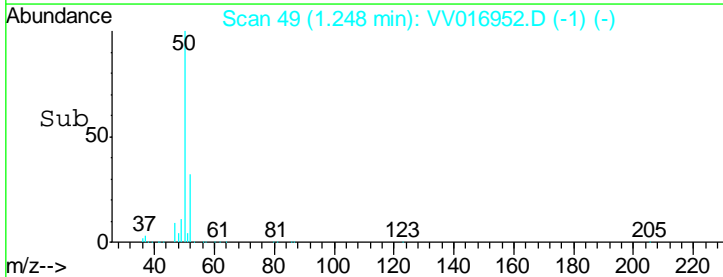
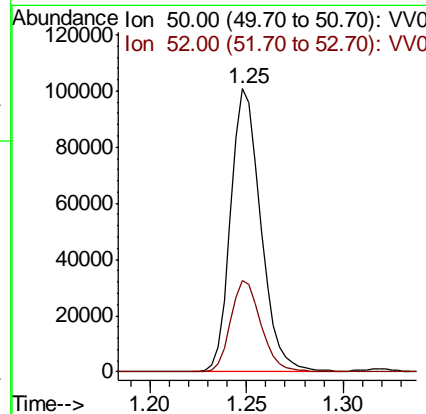
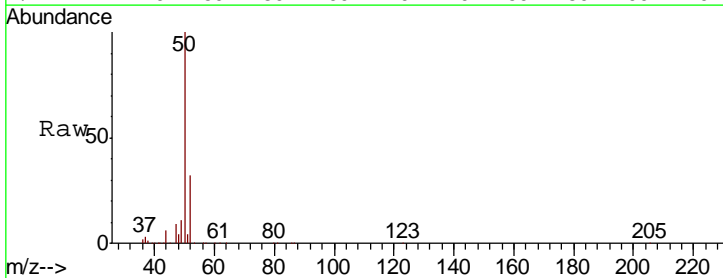
Instrument : MSVOA_V
 ClientSampled :

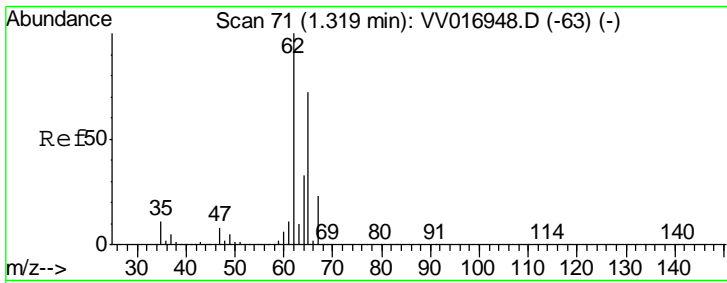
Tgt Ion: 85 Resp: 115385
 Ion Ratio Lower Upper
 85 100
 87 33.1 25.6 38.4



#3
 Chloromethane
 Concen: 46.185 ug/L
 RT: 1.25 min Scan# 49
 Delta R.T. 0.00 min
 Lab File: VV016952.D
 Acq: 16 Jun 2020 11:33

Tgt Ion: 50 Resp: 109219
 Ion Ratio Lower Upper
 50 100
 52 32.4 22.5 41.7

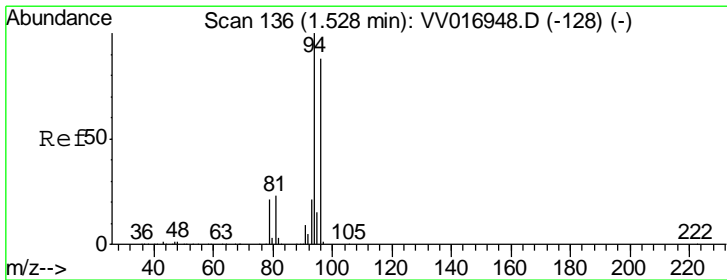
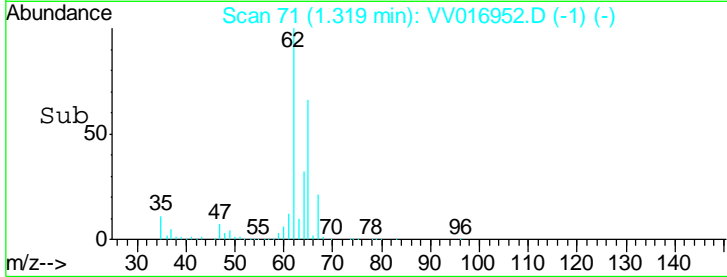
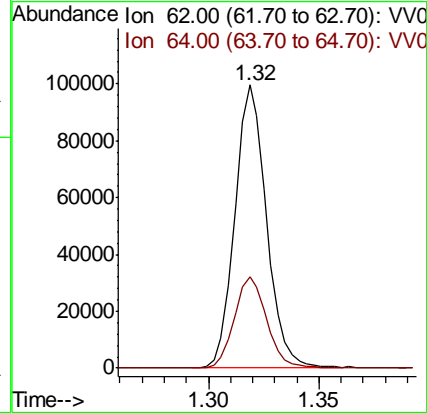
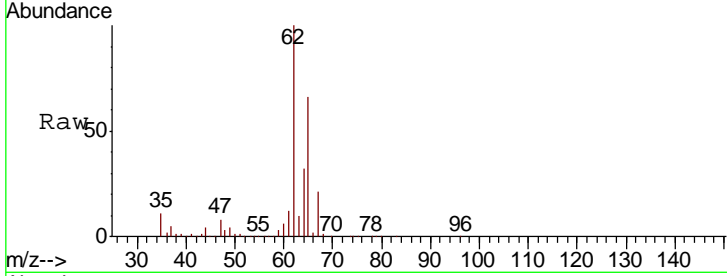




#5
 Vinyl chloride
 Concen: 42.769 ug/L
 RT: 1.32 min Scan# 71
 Delta R.T. 0.00 min
 Lab File: VV016952.D
 Acq: 16 Jun 2020 11:33

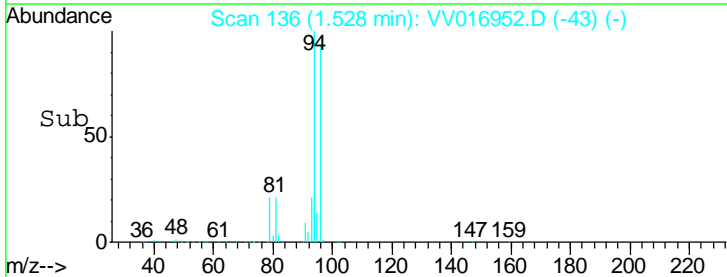
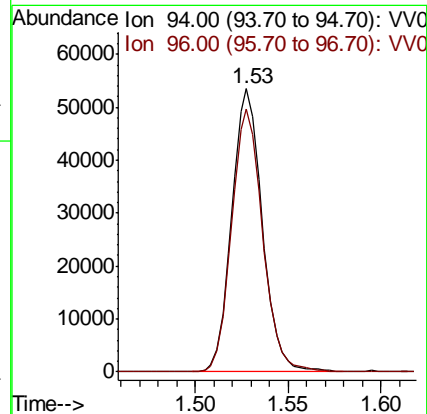
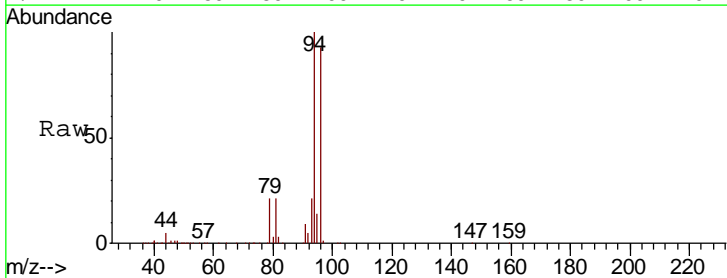
Instrument :
 MSVOA_V
 ClientSampled :

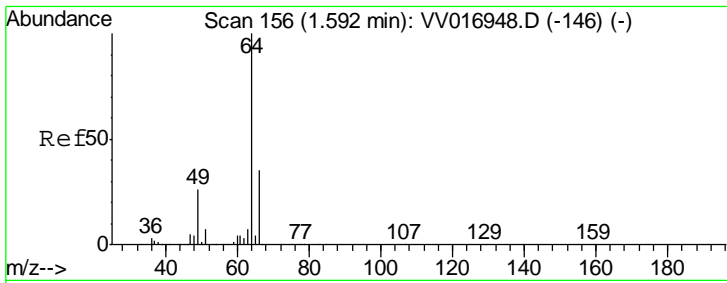
Tgt Ion	Resp	Lower	Upper
62	100		
64	32.3	22.3	41.5



#6
 Bromomethane
 Concen: 63.070 ug/L
 RT: 1.53 min Scan# 136
 Delta R.T. 0.00 min
 Lab File: VV016952.D
 Acq: 16 Jun 2020 11:33

Tgt Ion	Resp	Lower	Upper
94	100		
96	93.1	64.5	119.9

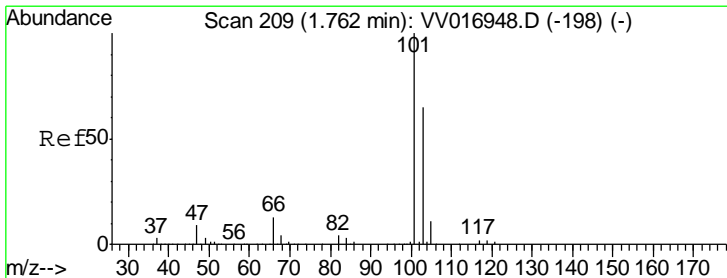
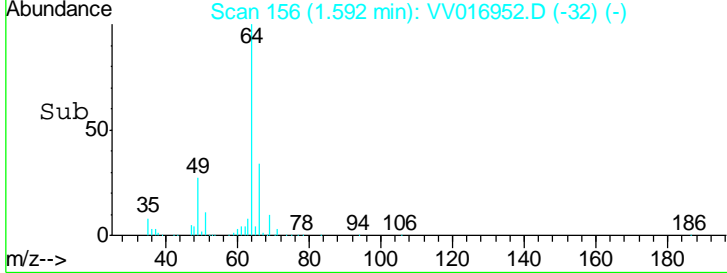
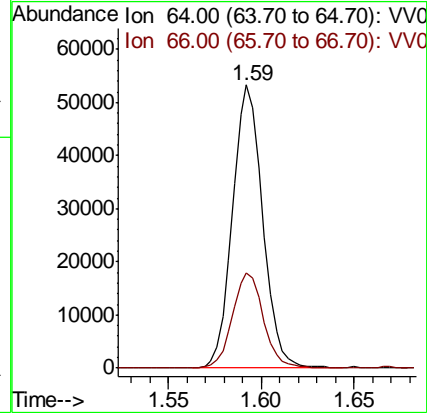
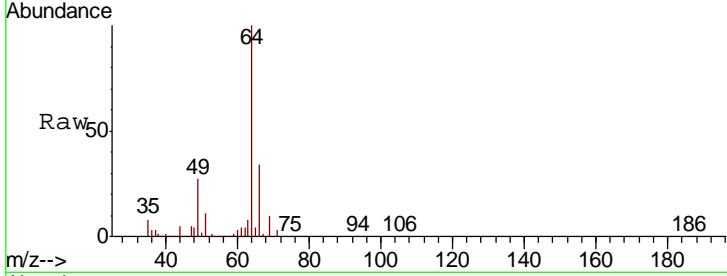




#8
 Chloroethane
 Concen: 52.450 ug/L
 RT: 1.59 min Scan# 156
 Delta R.T. 0.00 min
 Lab File: VV016952.D
 Acq: 16 Jun 2020 11:33

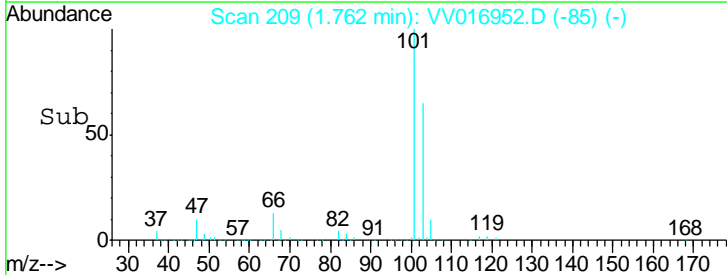
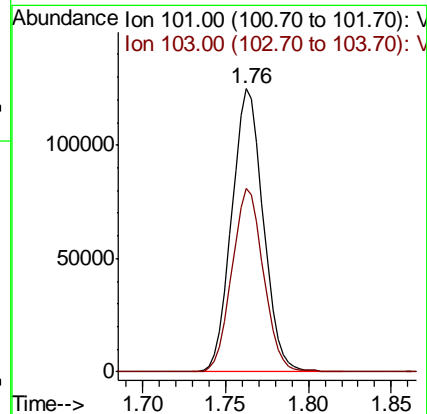
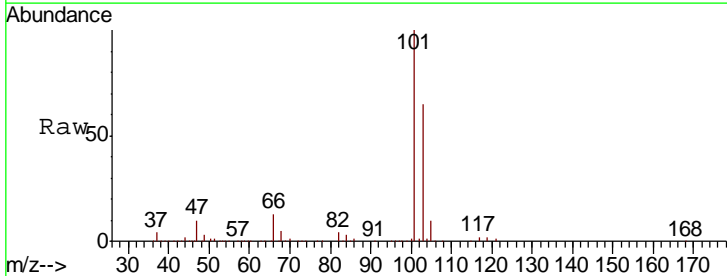
Instrument :
 MSVOA_V
 ClientSampled :

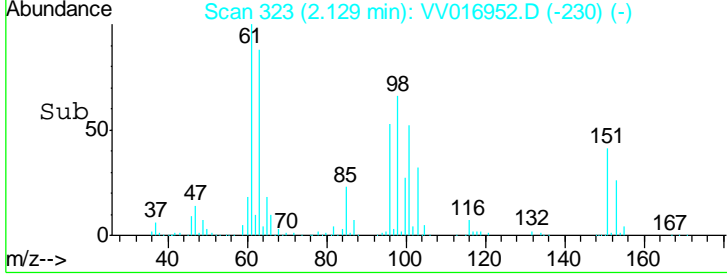
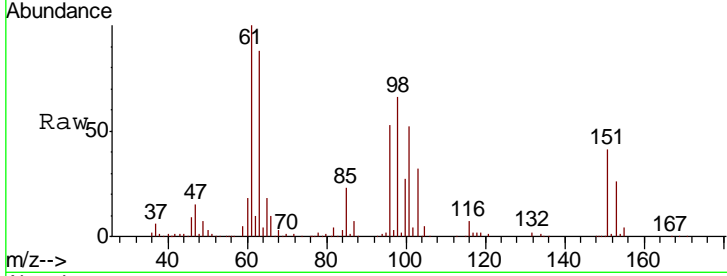
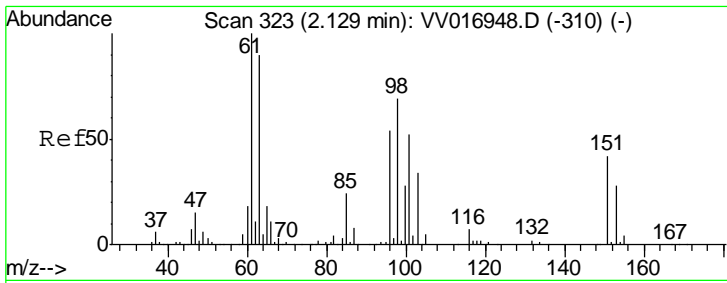
Tgt Ion	Resp	Lower	Upper
64	100		
66	33.8	23.2	43.0



#9
 Trichlorofluoromethane
 Concen: 47.413 ug/L
 RT: 1.76 min Scan# 209
 Delta R.T. 0.00 min
 Lab File: VV016952.D
 Acq: 16 Jun 2020 11:33

Tgt Ion	Resp	Lower	Upper
101	100		
103	65.0	51.3	76.9

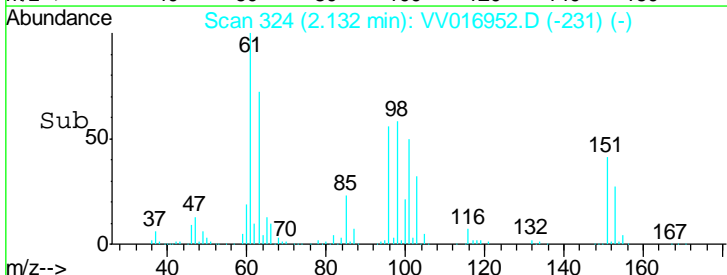
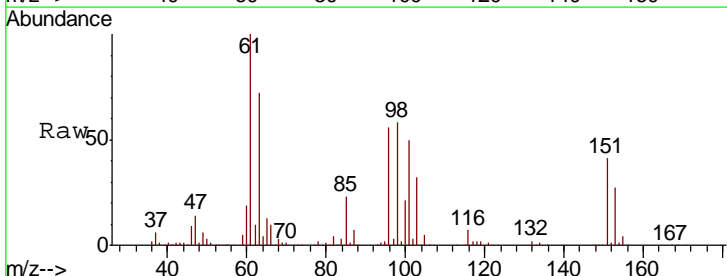
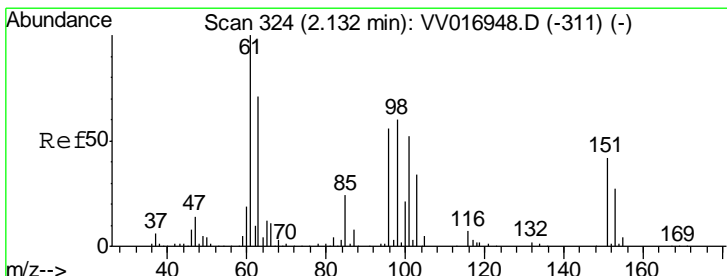
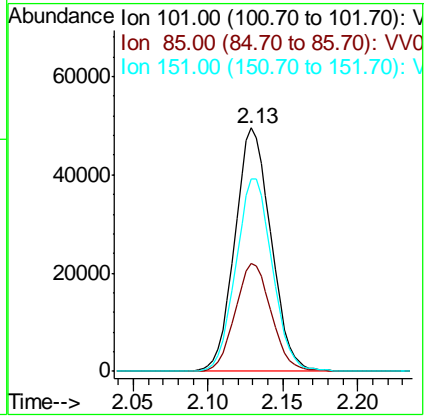




#10
 1,1,2-Trichloro-1,2,2-trifluoroethane
 Concen: 48.031 ug/L
 RT: 2.13 min Scan# 323
 Delta R.T. 0.00 min
 Lab File: VV016952.D
 Acq: 16 Jun 2020 11:33

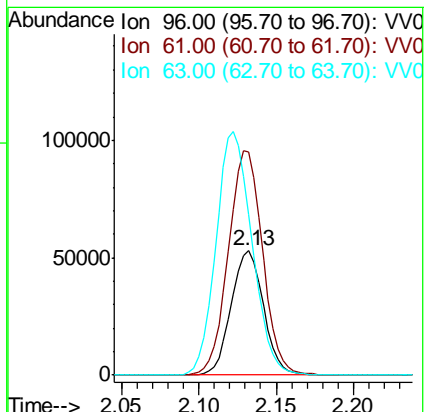
Instrument :
 MSVOA_V
 ClientSampled :

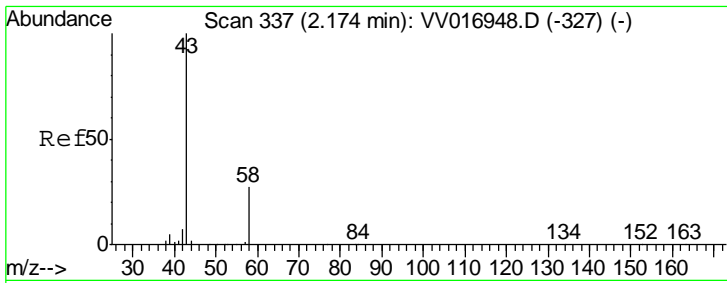
Tgt Ion	Resp	Lower	Upper
101	100		
85	44.4	35.5	53.3
151	79.9	63.9	95.9



#12
 1,1-Dichloroethene
 Concen: 47.395 ug/L
 RT: 2.13 min Scan# 324
 Delta R.T. 0.00 min
 Lab File: VV016952.D
 Acq: 16 Jun 2020 11:33

Tgt Ion	Resp	Lower	Upper
96	100		
61	179.5	130.4	242.2
63	129.1	103.3	191.9

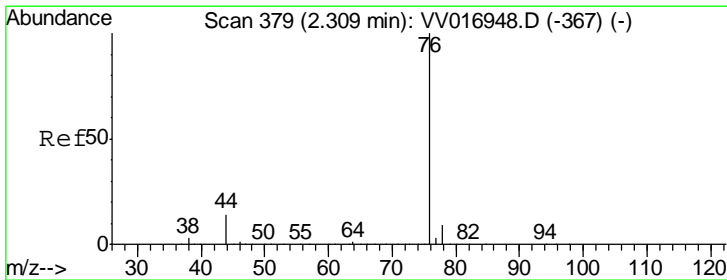
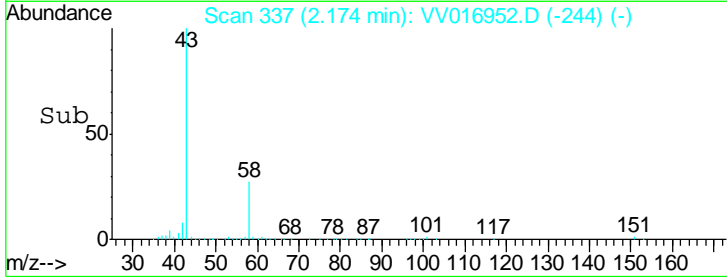
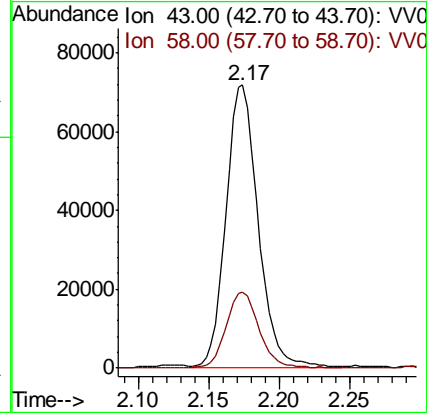
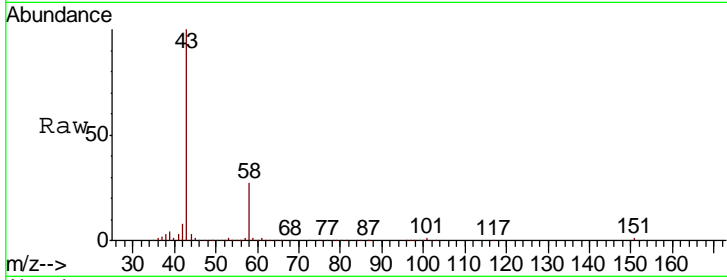




#13
 Acetone
 Concen: 101.337 ug/L
 RT: 2.17 min Scan# 337
 Delta R.T. 0.00 min
 Lab File: VV016952.D
 Acq: 16 Jun 2020 11:33

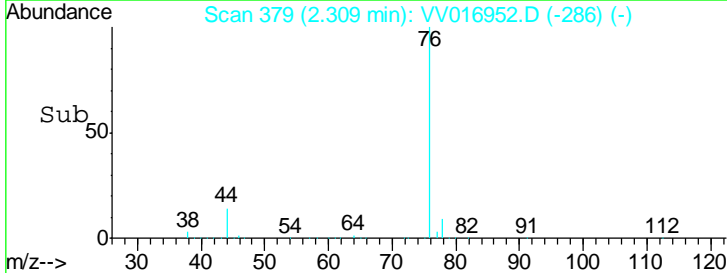
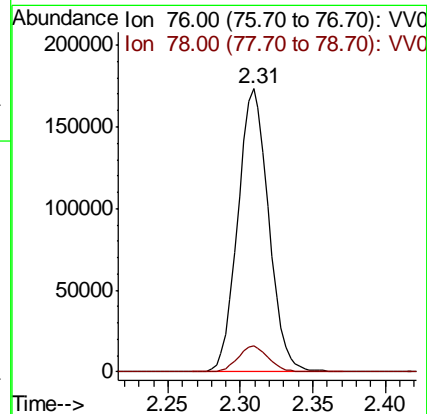
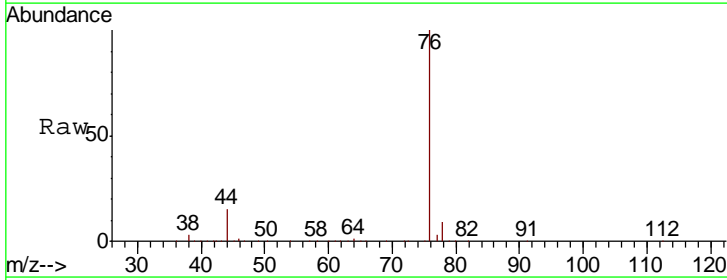
Instrument :
 MSVOA_V
 ClientSampled :

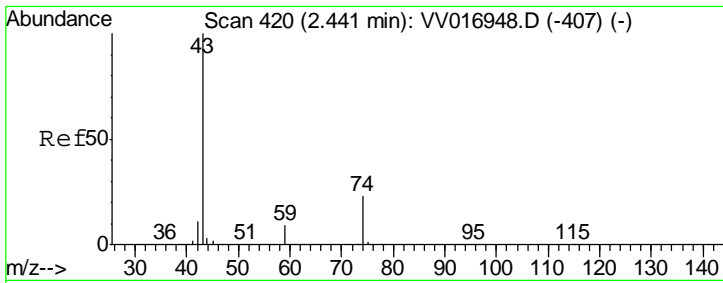
Tgt Ion	Resp	Lower	Upper
43	113737		
58	27.8	0.0	55.2



#14
 Carbon disulfide
 Concen: 43.695 ug/L
 RT: 2.31 min Scan# 379
 Delta R.T. 0.00 min
 Lab File: VV016952.D
 Acq: 16 Jun 2020 11:33

Tgt Ion	Resp	Lower	Upper
76	256109		
78	9.1	7.4	11.0

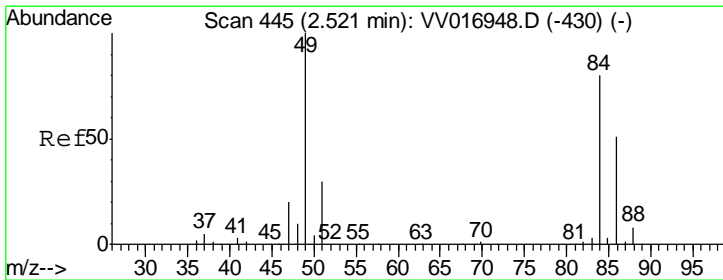
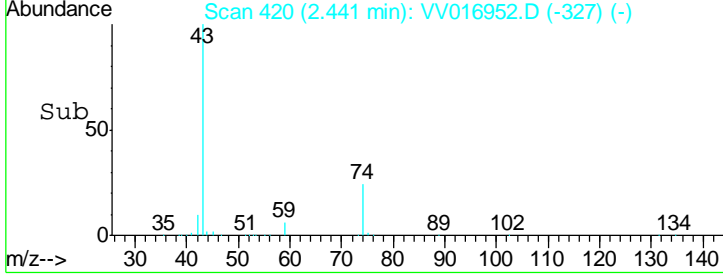
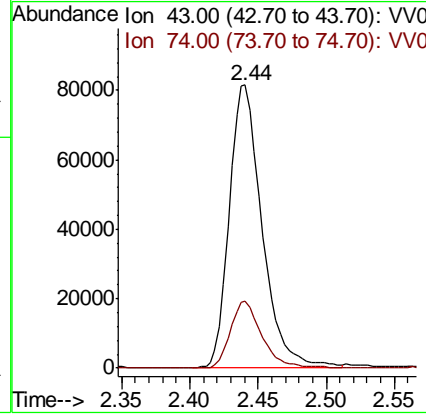
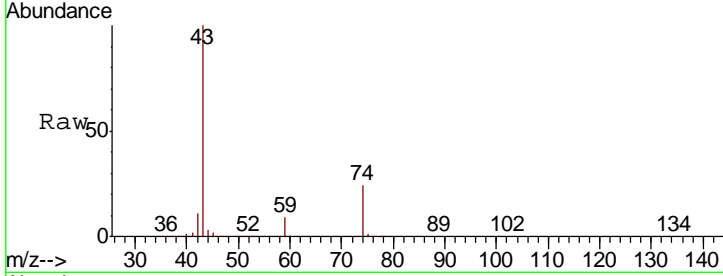




#15
 Methyl Acetate
 Concen: 53.991 ug/L
 RT: 2.44 min Scan# 420
 Delta R.T. 0.00 min
 Lab File: VV016952.D
 Acq: 16 Jun 2020 11:33

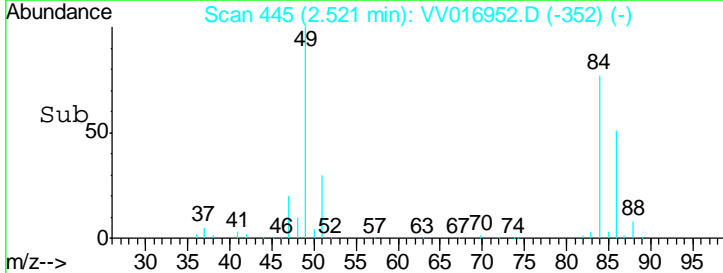
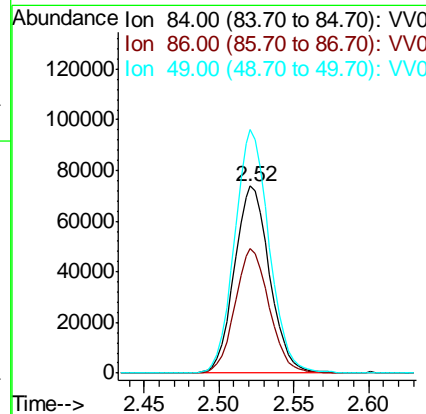
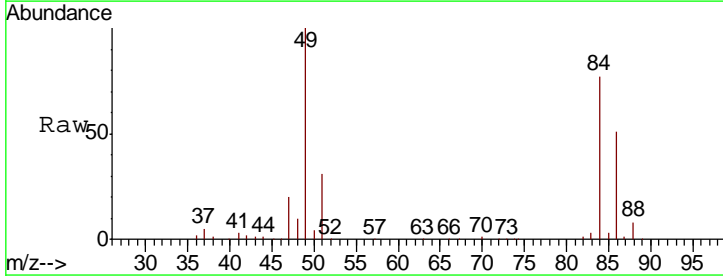
Instrument :
 MSVOA_V
 ClientSampled :

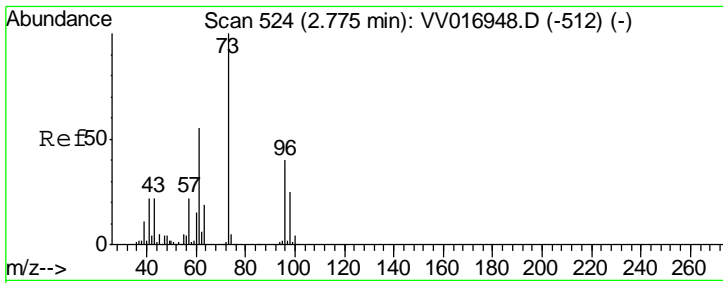
Tgt Ion	Resp	Lower	Upper
43	135063		
74	22.9	17.9	26.9



#16
 Methylene chloride
 Concen: 50.880 ug/L
 RT: 2.52 min Scan# 445
 Delta R.T. 0.00 min
 Lab File: VV016952.D
 Acq: 16 Jun 2020 11:33

Tgt Ion	Resp	Lower	Upper
84	120866		
86	66.8	44.0	81.8
49	130.2	90.9	168.9

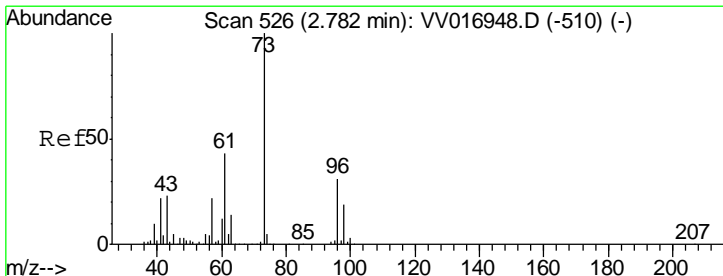
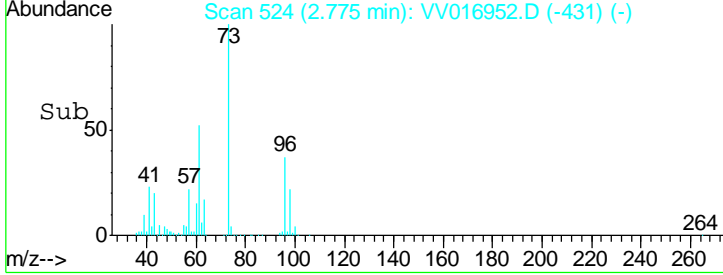
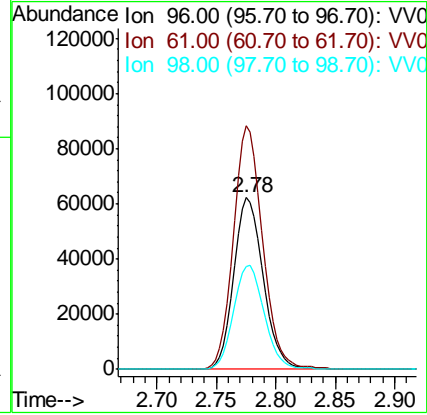
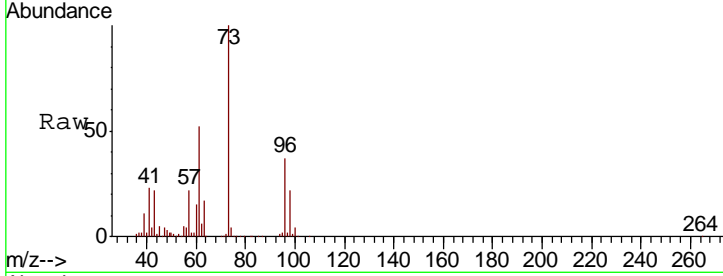




#17
 trans-1,2-Dichloroethene
 Concen: 48.617 ug/L
 RT: 2.78 min Scan# 524
 Delta R.T. 0.00 min
 Lab File: VV016952.D
 Acq: 16 Jun 2020 11:33

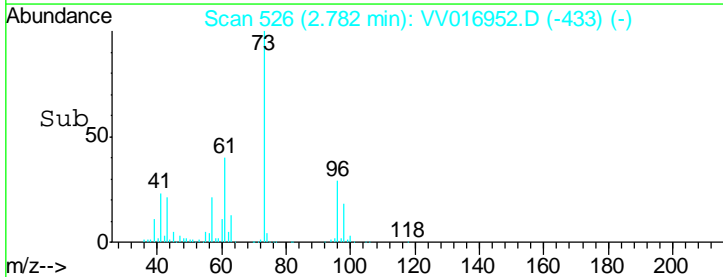
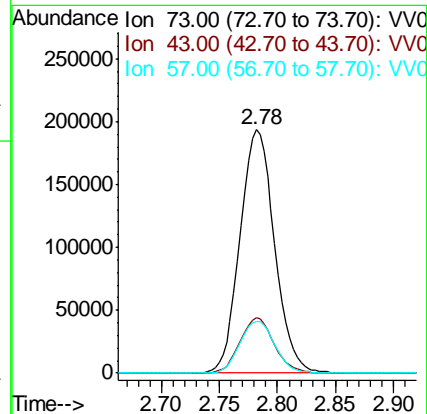
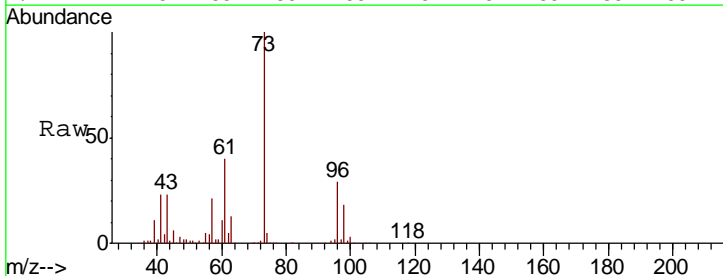
Instrument : MSVOA_V
 ClientSampled :

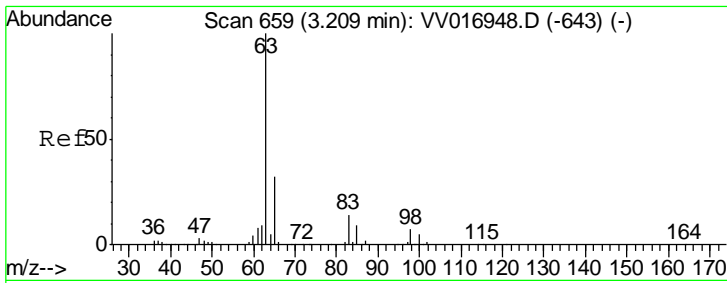
Tgt Ion	Resp	Lower	Upper
96	107311		
96	100		
61	142.1	102.9	191.1
98	60.3	45.5	84.5



#18
 Methyl tert-butyl Ether
 Concen: 54.871 ug/L
 RT: 2.78 min Scan# 526
 Delta R.T. 0.00 min
 Lab File: VV016952.D
 Acq: 16 Jun 2020 11:33

Tgt Ion	Resp	Lower	Upper
73	401315		
73	100		
43	22.1	17.8	26.6
57	21.7	17.7	26.5

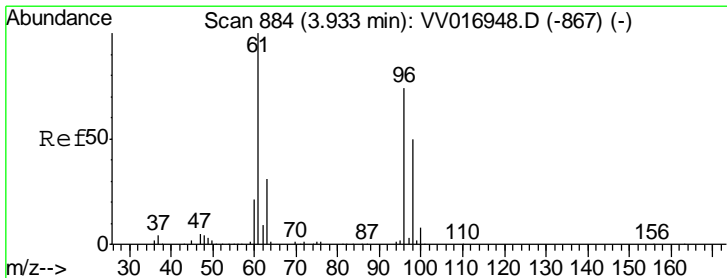
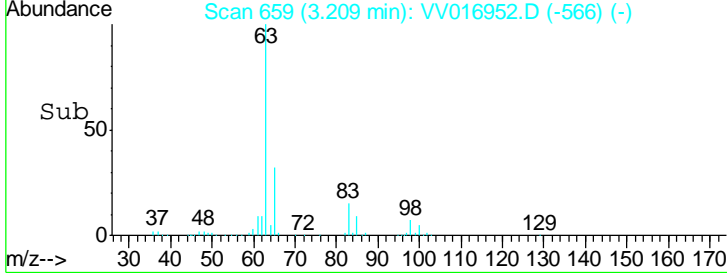
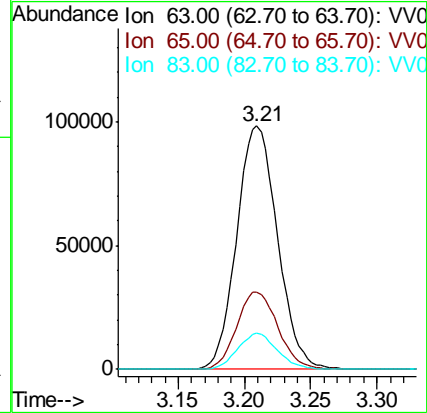
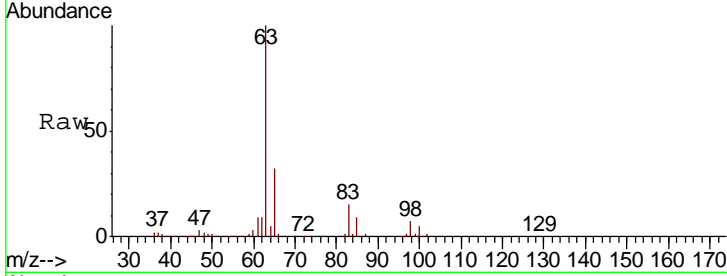




#19
 1,1-Dichloroethane
 Concen: 50.253 ug/L
 RT: 3.21 min Scan# 659
 Delta R.T. 0.00 min
 Lab File: VV016952.D
 Acq: 16 Jun 2020 11:33

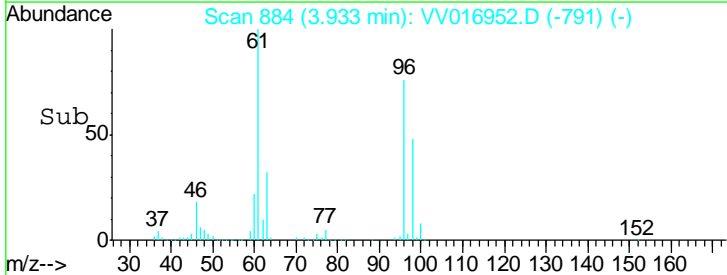
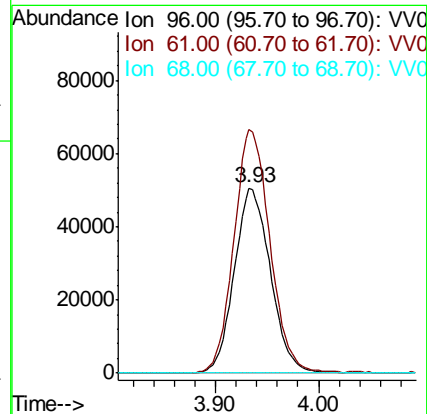
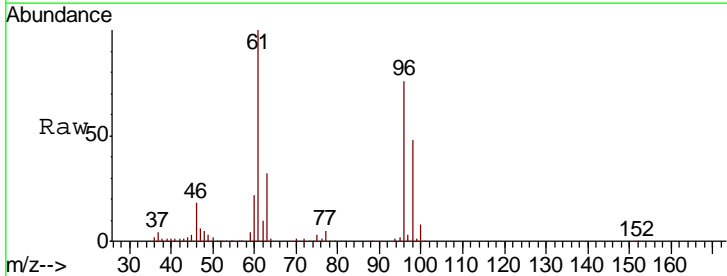
Instrument :
 MSVOA_V
 ClientSampled :

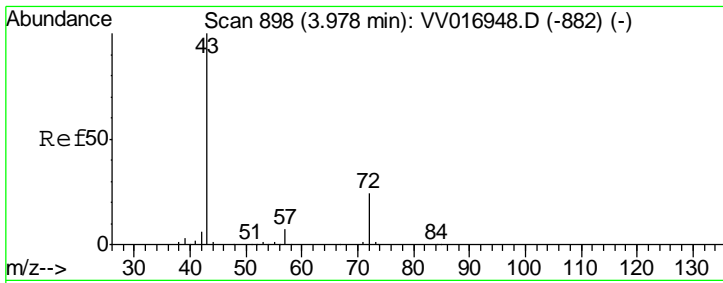
Tgt Ion	Resp	Lower	Upper
63	100		
65	32.0	23.2	43.0
83	15.1	10.0	18.6



#20
 cis-1,2-Dichloroethene
 Concen: 51.291 ug/L
 RT: 3.93 min Scan# 884
 Delta R.T. 0.00 min
 Lab File: VV016952.D
 Acq: 16 Jun 2020 11:33

Tgt Ion	Resp	Lower	Upper
96	100		
61	131.7	93.4	173.4
68	0.0	0.0	0.0

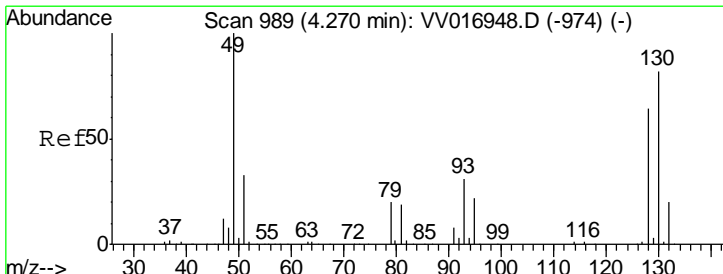
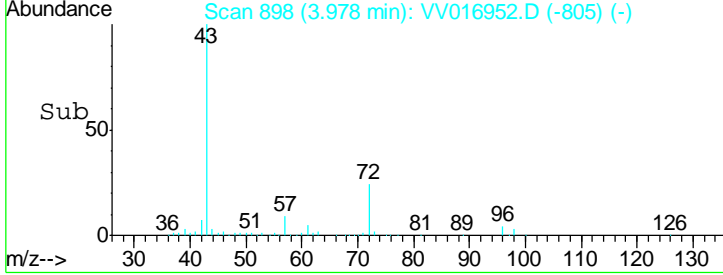
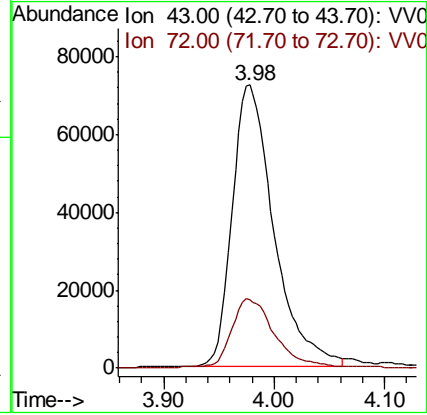
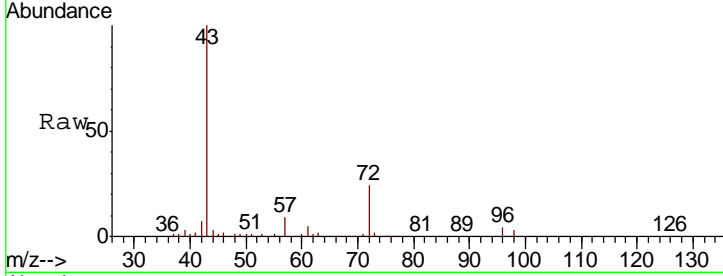




#22
 2-Butanone
 Concen: 109.116 ug/L
 RT: 3.98 min Scan# 898
 Delta R.T. 0.00 min
 Lab File: VV016952.D
 Acq: 16 Jun 2020 11:33

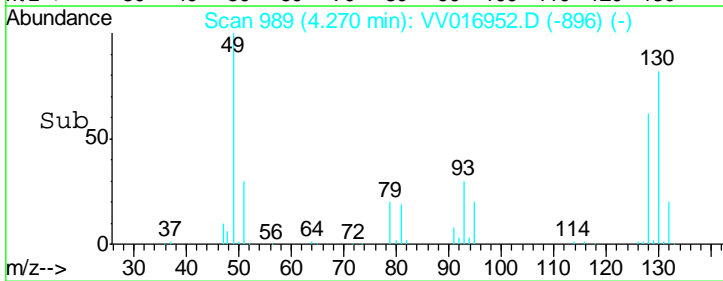
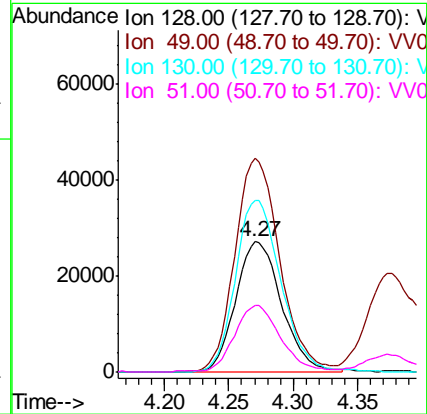
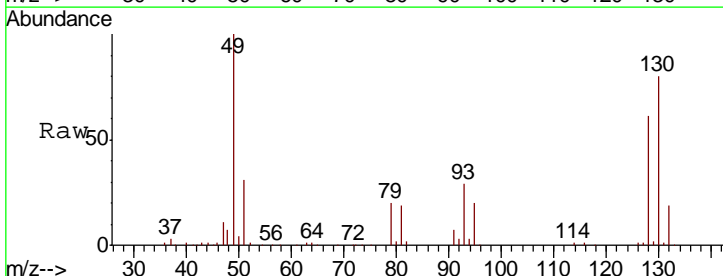
Instrument : MSVOA_V
 ClientSampled :

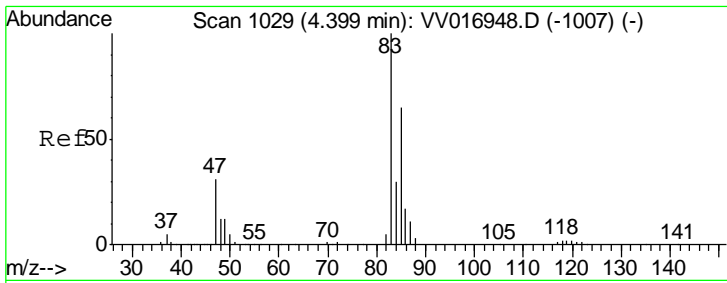
Tgt Ion	Resp	Lower	Upper
43	188855		
72	24.1	12.4	37.4



#23
 Bromochloromethane
 Concen: 53.109 ug/L
 RT: 4.27 min Scan# 989
 Delta R.T. 0.00 min
 Lab File: VV016952.D
 Acq: 16 Jun 2020 11:33

Tgt Ion	Resp	Lower	Upper
128	67321		
49	163.8	111.9	207.9
130	131.7	91.5	169.9
51	50.9	42.1	63.1

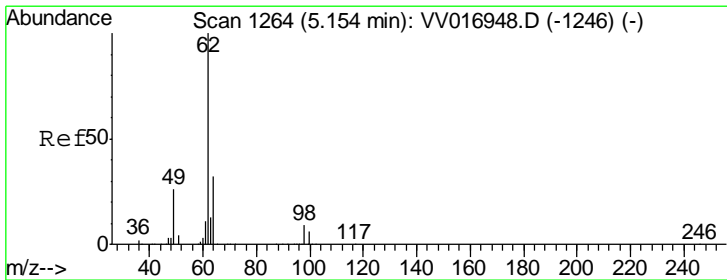
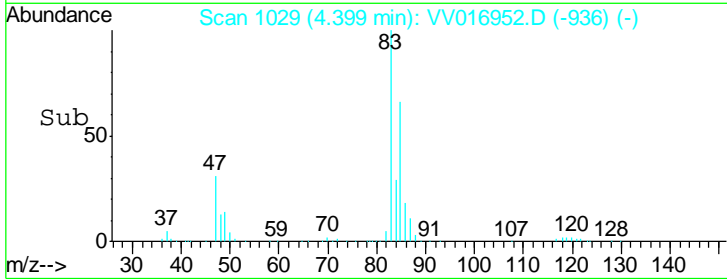
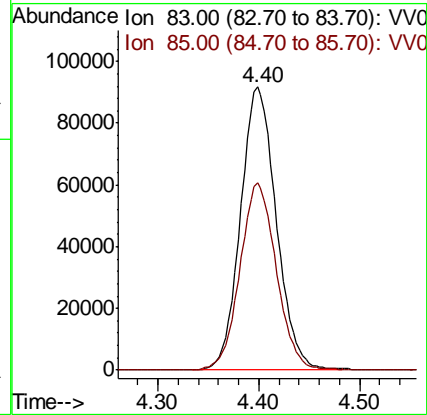
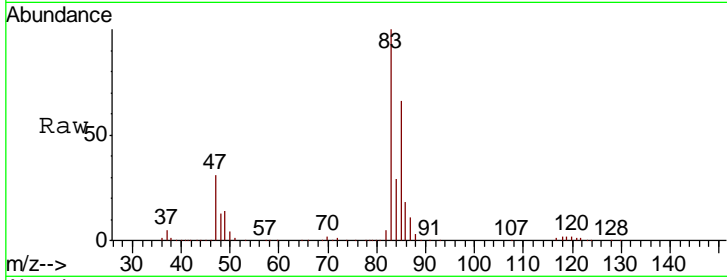




#25
 Chloroform
 Concen: 52.831 ug/L
 RT: 4.40 min Scan# 1029
 Delta R.T. 0.00 min
 Lab File: VV016952.D
 Acq: 16 Jun 2020 11:33

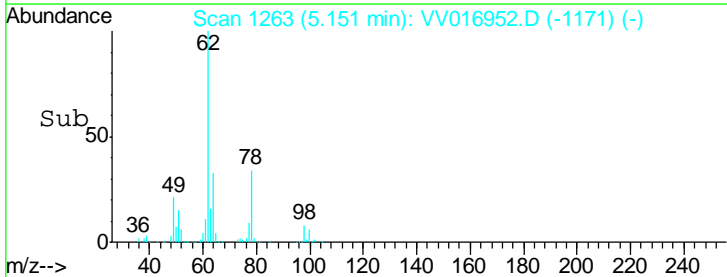
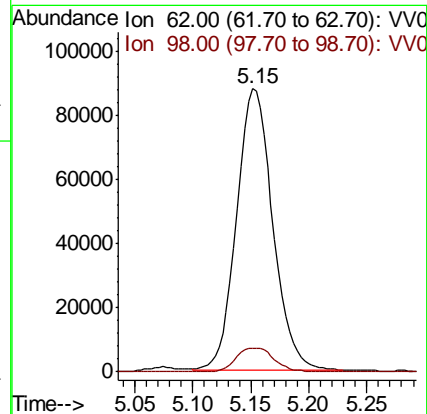
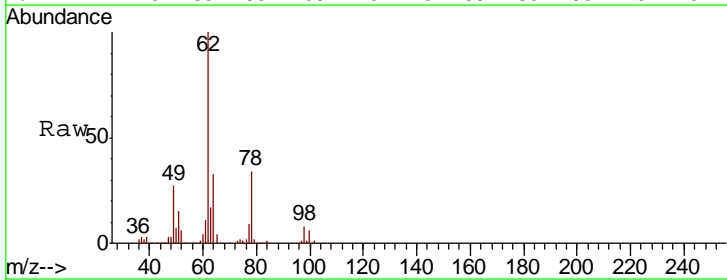
Instrument : MSVOA_V
 ClientSampled :

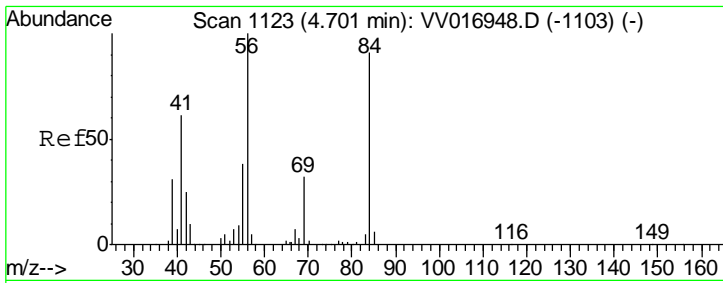
Tgt Ion	Resp	Lower	Upper
83	100		
85	66.3	44.1	81.9



#27
 1,2-Dichloroethane
 Concen: 53.167 ug/L
 RT: 5.15 min Scan# 1263
 Delta R.T. -0.00 min
 Lab File: VV016952.D
 Acq: 16 Jun 2020 11:33

Tgt Ion	Resp	Lower	Upper
62	100		
98	8.3	7.4	11.2

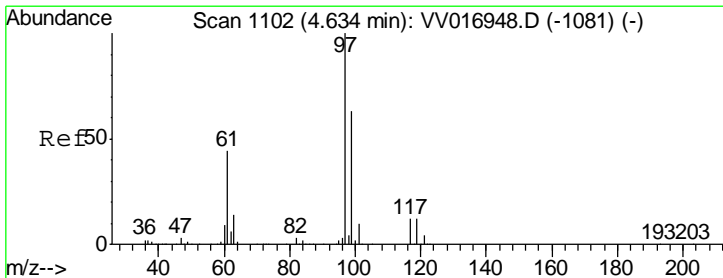
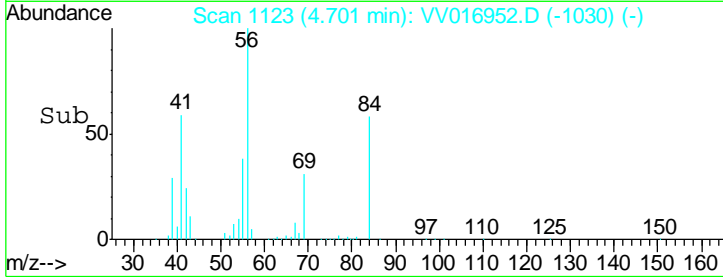
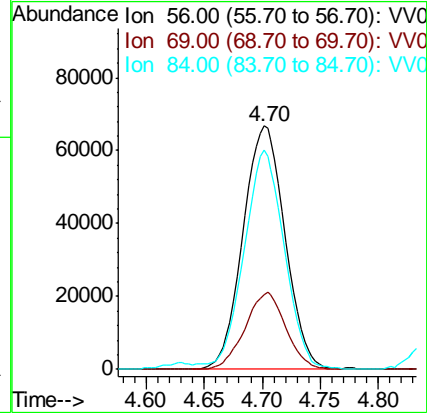
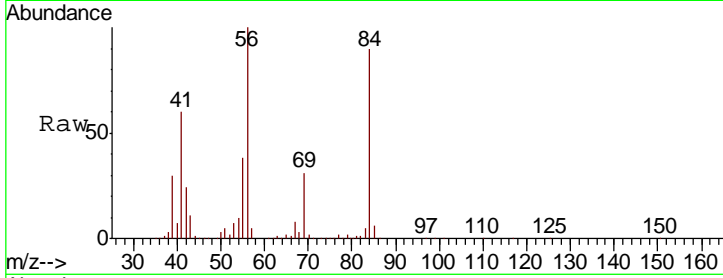




#29
 Cyclohexane
 Concen: 43.116 ug/L
 RT: 4.70 min Scan# 1123
 Delta R.T. 0.00 min
 Lab File: VV016952.D
 Acq: 16 Jun 2020 11:33

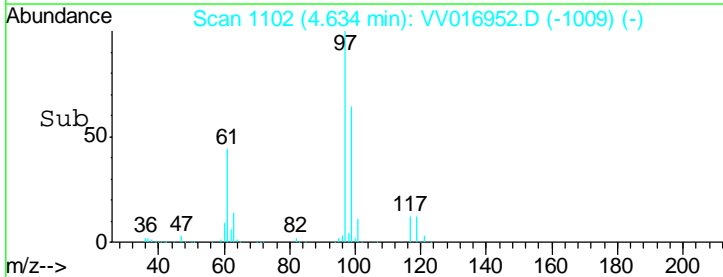
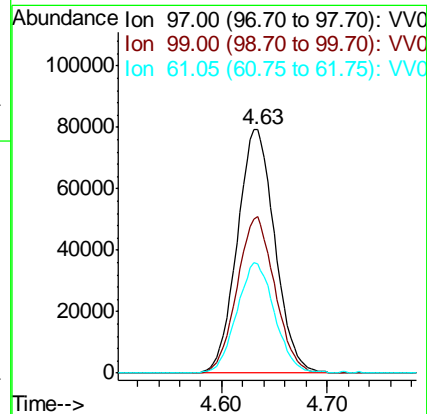
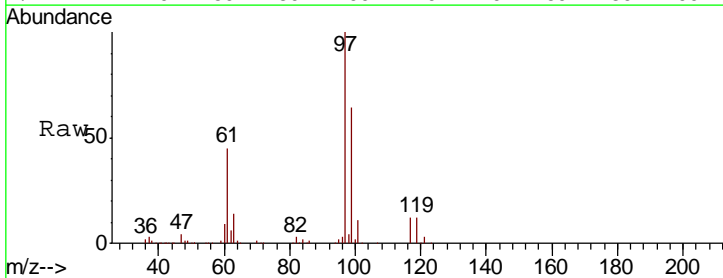
Instrument :
 MSVOA_V
 ClientSampled :

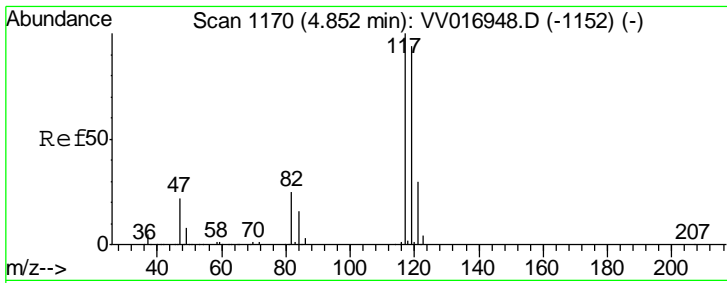
Tgt Ion	Resp	Lower	Upper
56	168141		
69	30.8	25.0	37.4
84	85.5	69.5	104.3



#30
 1,1,1-Trichloroethane
 Concen: 49.020 ug/L
 RT: 4.63 min Scan# 1102
 Delta R.T. 0.00 min
 Lab File: VV016952.D
 Acq: 16 Jun 2020 11:33

Tgt Ion	Resp	Lower	Upper
97	196188		
99	64.5	51.3	76.9
61	45.7	36.7	55.1

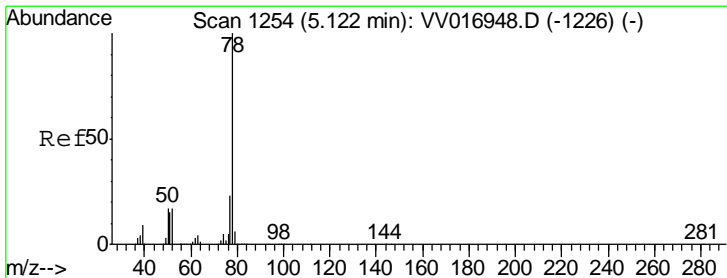
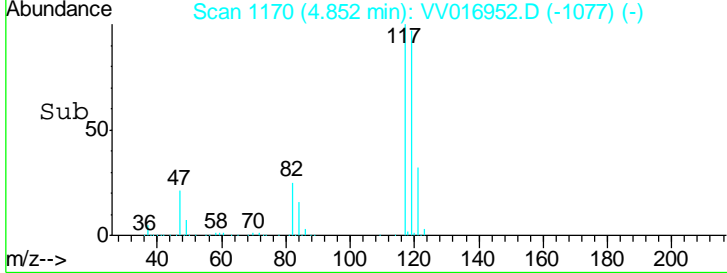
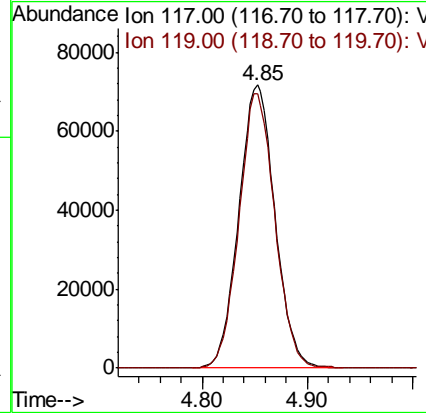
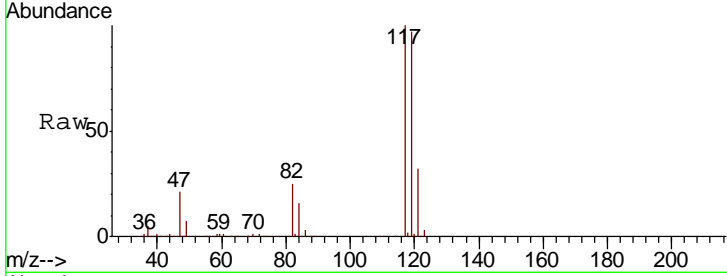




#31
 Carbon tetrachloride
 Concen: 49.279 ug/L
 RT: 4.85 min Scan# 1170
 Delta R.T. 0.00 min
 Lab File: VV016952.D
 Acq: 16 Jun 2020 11:33

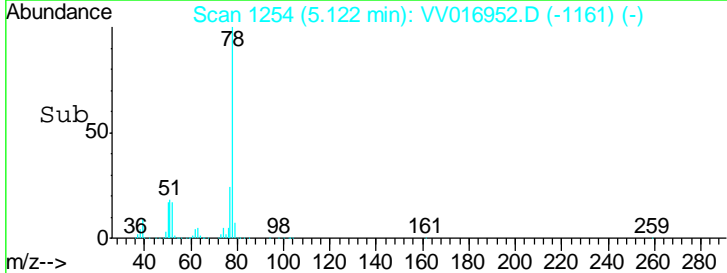
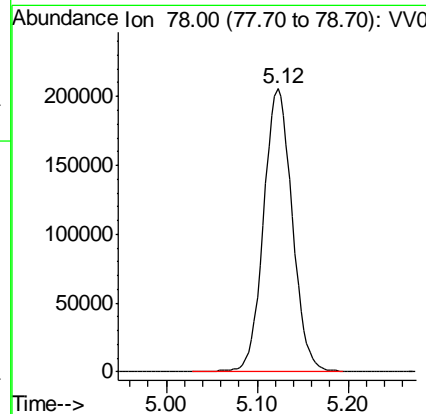
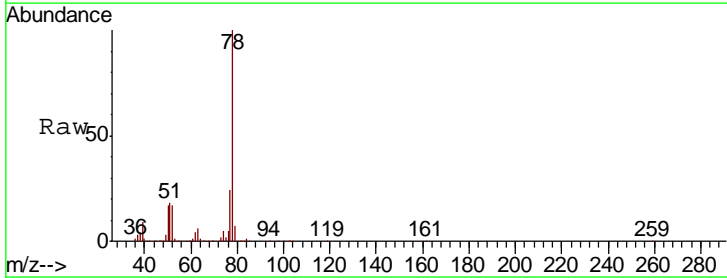
Instrument : MSVOA_V
 ClientSampled :

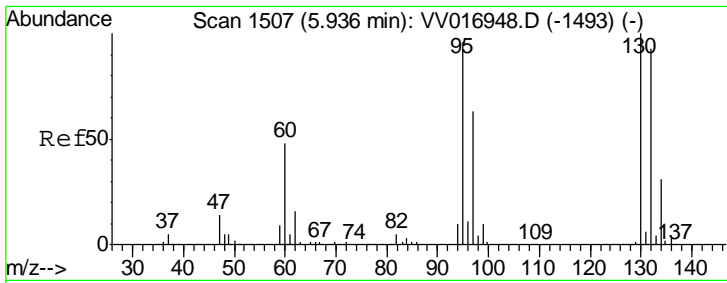
Tgt Ion	Resp	Lower	Upper
117	170618		
119	96.2	77.4	116.2



#33
 Benzene
 Concen: 48.406 ug/L
 RT: 5.12 min Scan# 1254
 Delta R.T. 0.00 min
 Lab File: VV016952.D
 Acq: 16 Jun 2020 11:33

Tgt Ion: 78 Resp: 449459

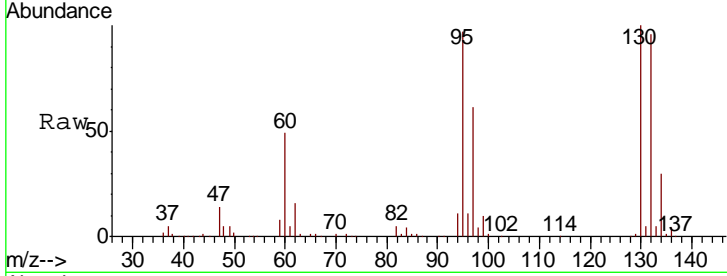




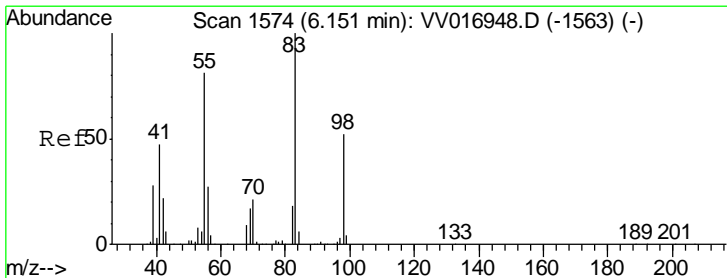
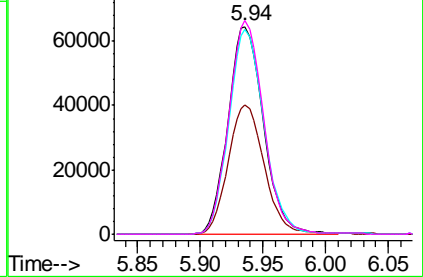
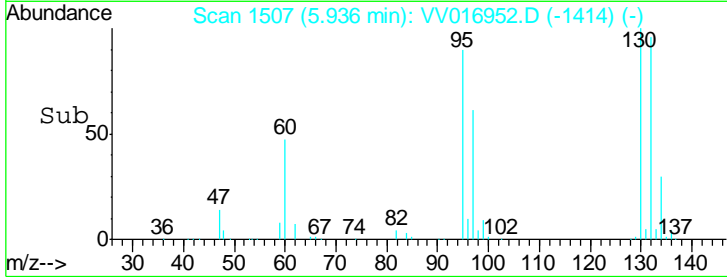
#34
 Trichloroethene
 Concen: 51.076 ug/L
 RT: 5.94 min Scan# 1507
 Delta R.T. 0.00 min
 Lab File: VV016952.D
 Acq: 16 Jun 2020 11:33

Instrument :
 MSVOA_V
 ClientSampled :

Tgt Ion	Resp	Lower	Upper
95	127192		
97	62.5	44.3	82.3
132	98.9	67.9	126.1
130	102.9	72.2	134.2

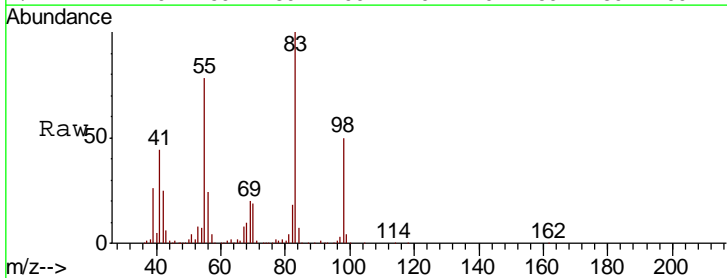


Abundance Ion 95.00 (94.70 to 95.70): VV016952.D (-1414) (-)
 Ion 97.00 (96.70 to 97.70): VV016952.D (-1414) (-)
 Ion 132.00 (131.70 to 132.70): VV016952.D (-1414) (-)
 Ion 130.00 (129.70 to 130.70): VV016952.D (-1414) (-)

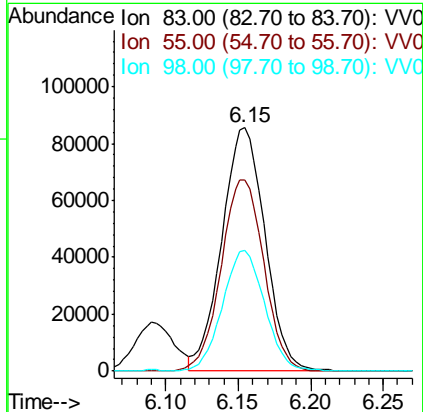
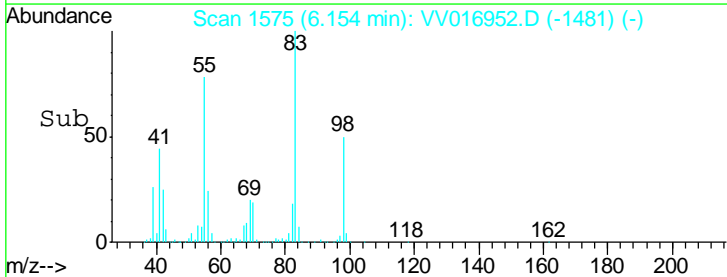


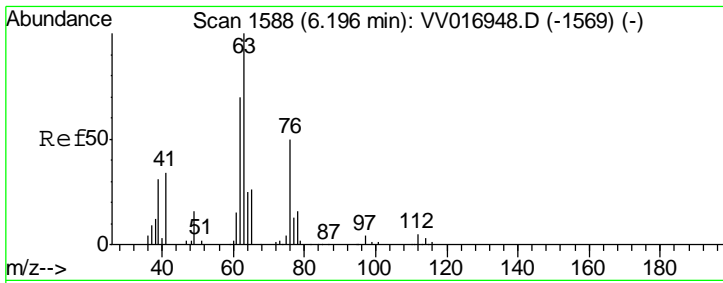
#35
 Methylcyclohexane
 Concen: 45.356 ug/L
 RT: 6.15 min Scan# 1575
 Delta R.T. 0.00 min
 Lab File: VV016952.D
 Acq: 16 Jun 2020 11:33

Tgt Ion	Resp	Lower	Upper
83	177192		
55	78.0	64.2	96.2
98	48.6	40.3	60.5



Abundance Ion 83.00 (82.70 to 83.70): VV016952.D (-1481) (-)
 Ion 55.00 (54.70 to 55.70): VV016952.D (-1481) (-)
 Ion 98.00 (97.70 to 98.70): VV016952.D (-1481) (-)

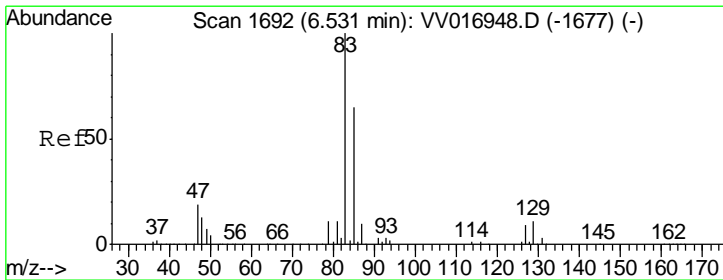
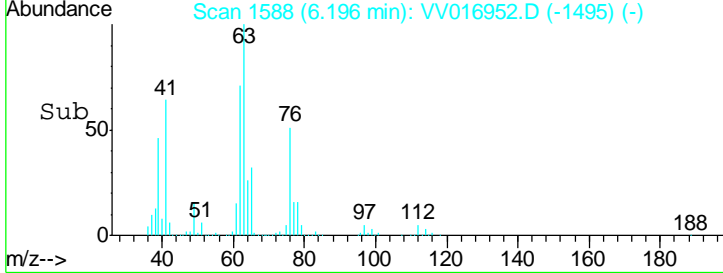
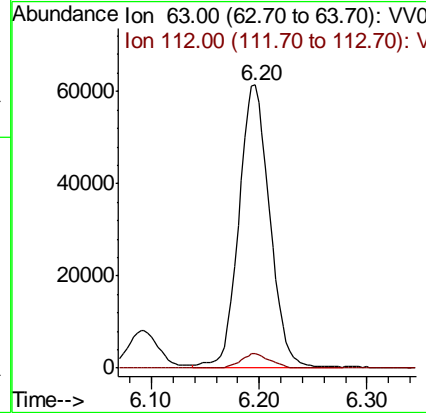
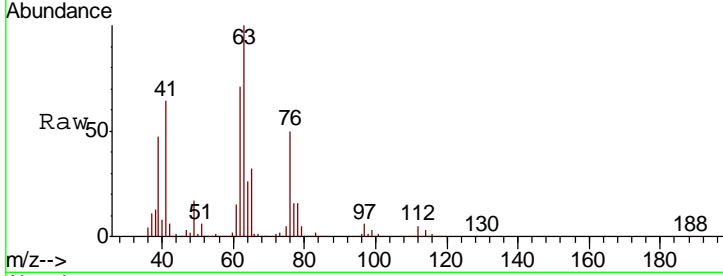




#37
 1,2-Dichloropropane
 Concen: 51.019 ug/L
 RT: 6.20 min Scan# 1588
 Delta R.T. 0.00 min
 Lab File: VV016952.D
 Acq: 16 Jun 2020 11:33

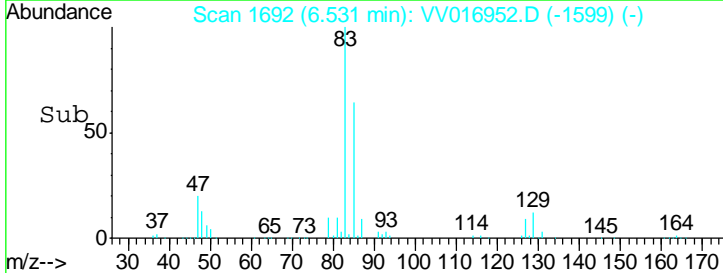
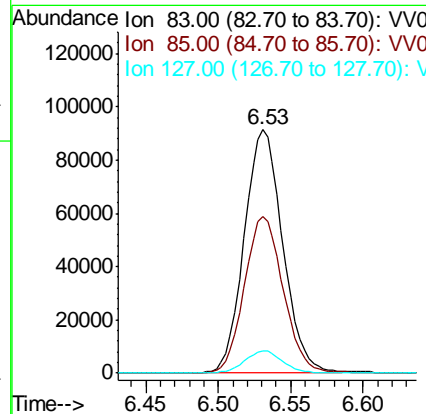
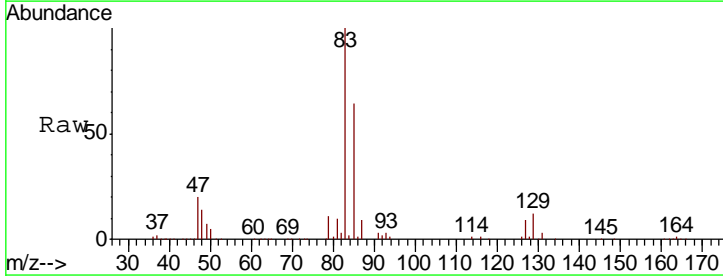
Instrument :
 MSVOA_V
 ClientSampled :

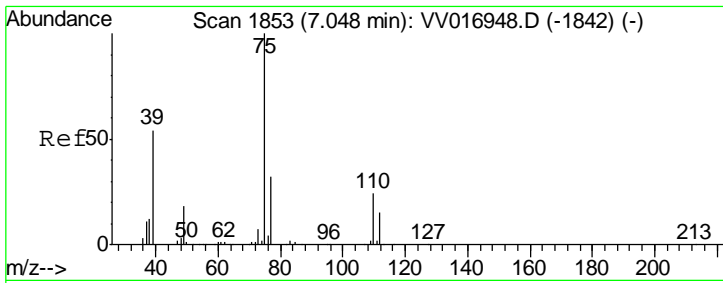
Tgt Ion	Resp	Lower	Upper
63	123194		
112	4.8	3.8	5.6



#38
 Bromodichloromethane
 Concen: 52.555 ug/L
 RT: 6.53 min Scan# 1692
 Delta R.T. 0.00 min
 Lab File: VV016952.D
 Acq: 16 Jun 2020 11:33

Tgt Ion	Resp	Lower	Upper
83	168932		
85	64.4	44.4	82.5
127	9.2	7.4	11.0

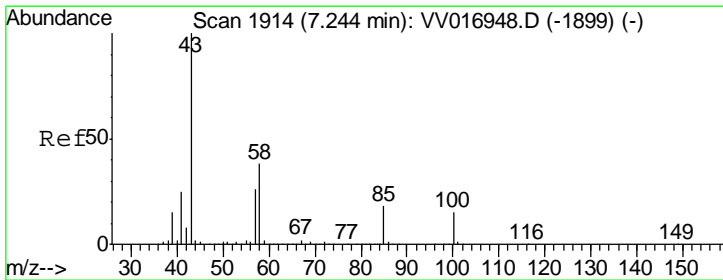
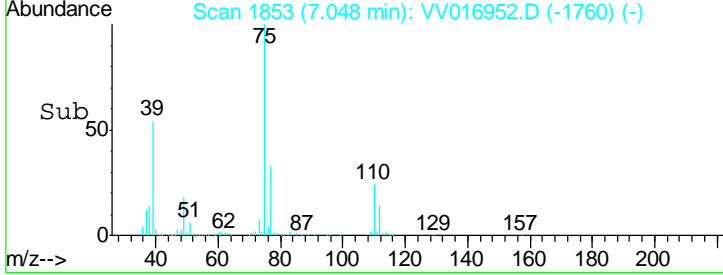
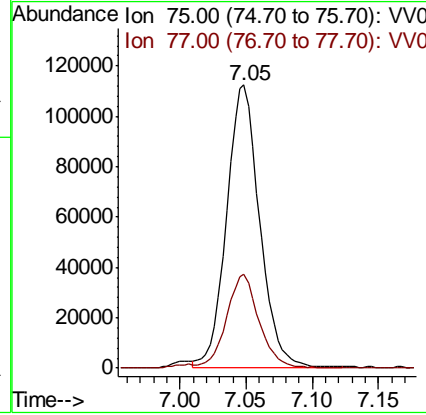
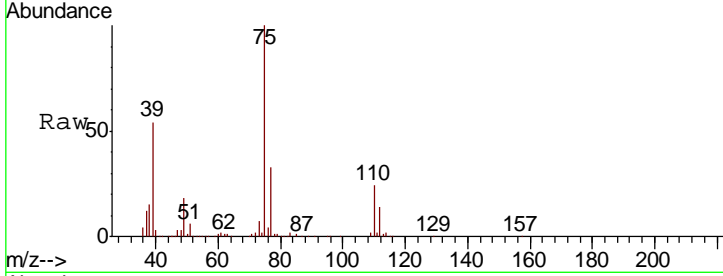




#39
 cis-1,3-Dichloropropene
 Concen: 52.081 ug/L
 RT: 7.05 min Scan# 1853
 Delta R.T. 0.00 min
 Lab File: VV016952.D
 Acq: 16 Jun 2020 11:33

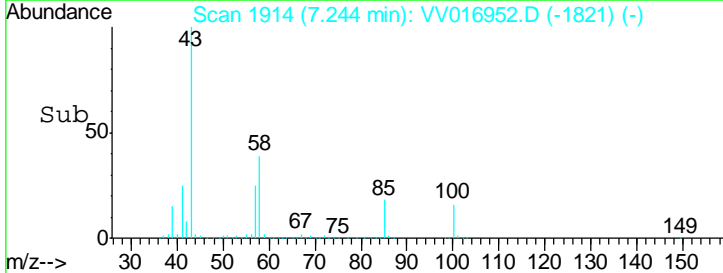
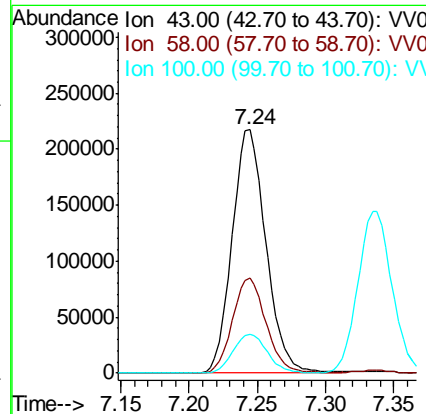
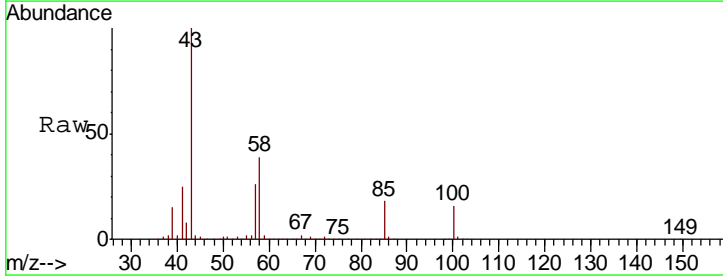
Instrument : MSVOA_V
 ClientSampled :

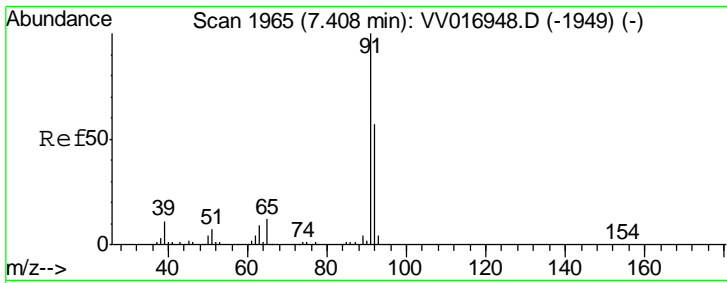
Tgt Ion	Resp	Lower	Upper
75	195348		
77	33.2	22.7	42.1



#40
 4-Methyl-2-pentanone
 Concen: 109.455 ug/L
 RT: 7.24 min Scan# 1914
 Delta R.T. 0.00 min
 Lab File: VV016952.D
 Acq: 16 Jun 2020 11:33

Tgt Ion	Resp	Lower	Upper
43	374517		
58	38.6	30.2	45.4
100	16.4	12.3	18.5

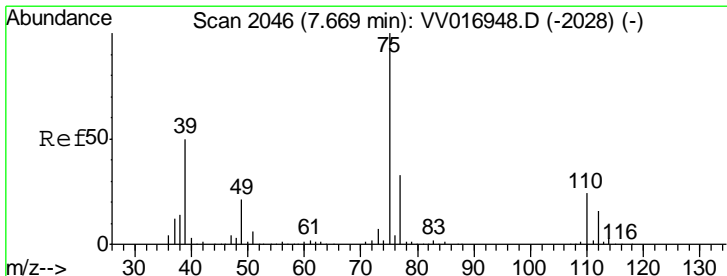
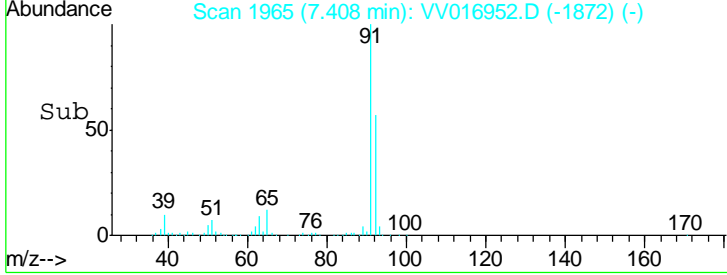
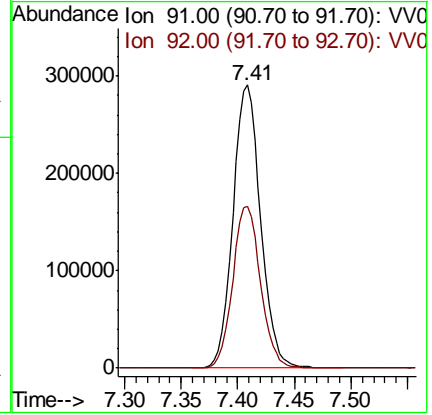
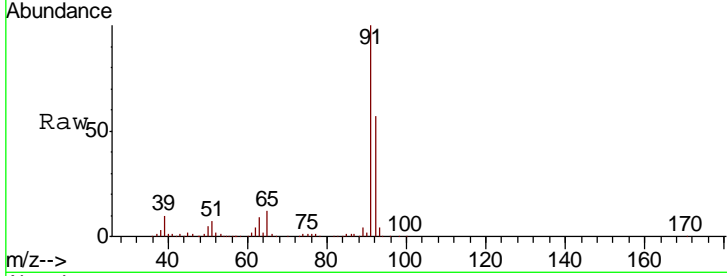




#42
 Toluene
 Concen: 50.477 ug/L
 RT: 7.41 min Scan# 1965
 Delta R.T. 0.00 min
 Lab File: VV016952.D
 Acq: 16 Jun 2020 11:33

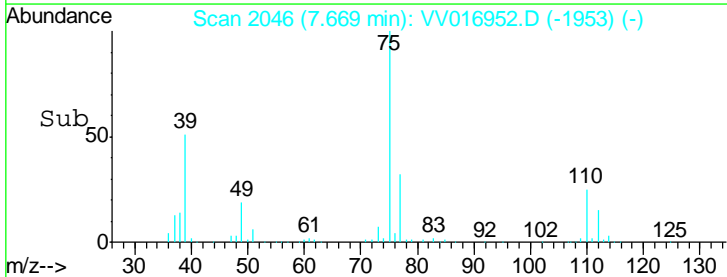
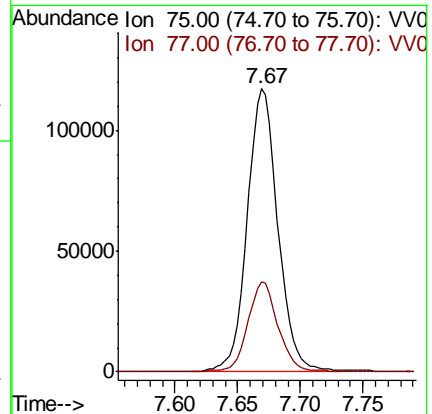
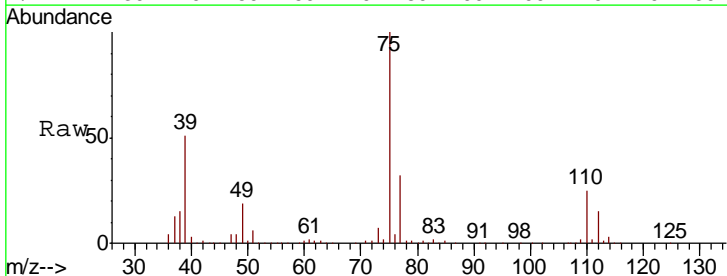
Instrument :
 MSVOA_V
 ClientSampled :

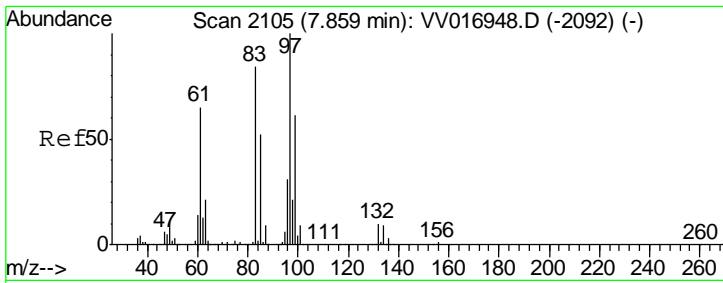
Tgt Ion	Resp	Lower	Upper
91	100		
92	57.3	40.4	75.0



#44
 trans-1,3-Dichloropropene
 Concen: 54.892 ug/L
 RT: 7.67 min Scan# 2046
 Delta R.T. 0.00 min
 Lab File: VV016952.D
 Acq: 16 Jun 2020 11:33

Tgt Ion	Resp	Lower	Upper
75	100		
77	32.0	21.7	40.3

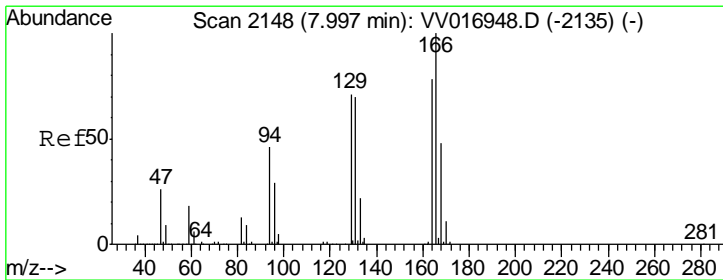
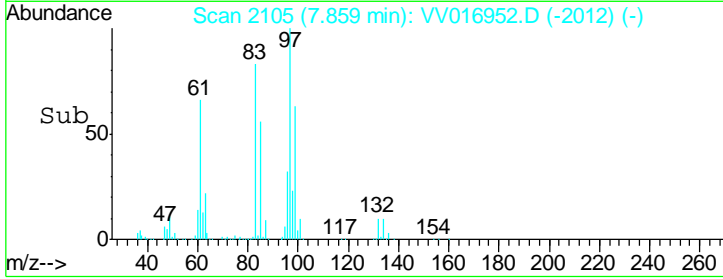
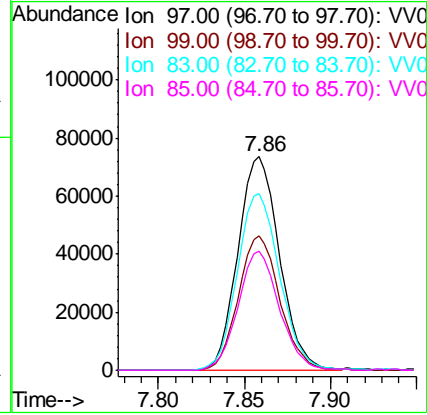
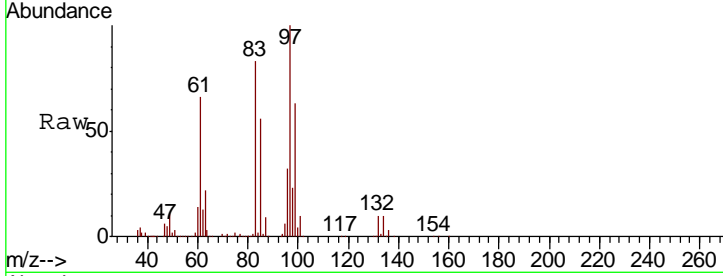




#45
 1,1,2-Trichloroethane
 Concen: 53.039 ug/L
 RT: 7.86 min Scan# 2105
 Delta R.T. 0.00 min
 Lab File: VV016952.D
 Acq: 16 Jun 2020 11:33

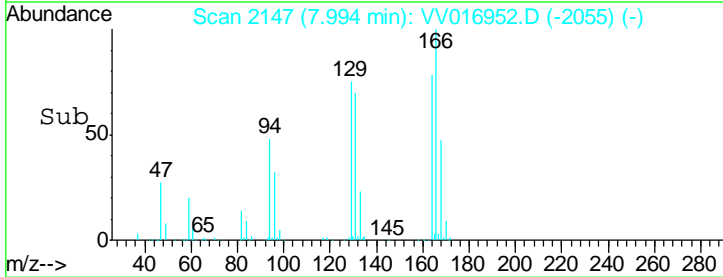
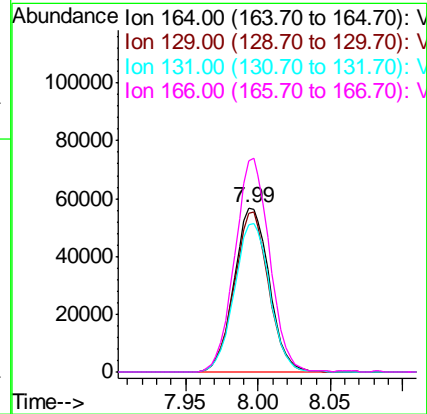
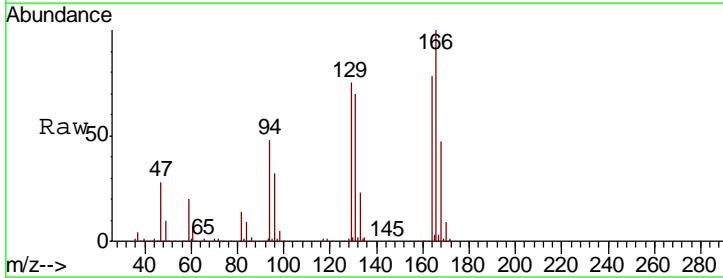
Instrument :
 MSVOA_V
 ClientSampled :

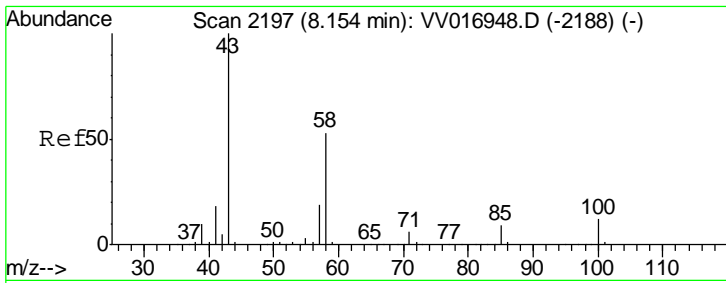
Tgt Ion	Resp	Lower	Upper
97	123561		
99	62.7	44.3	82.3
83	82.7	60.0	111.4
85	55.9	39.5	73.3



#46
 Tetrachloroethene
 Concen: 48.599 ug/L
 RT: 7.99 min Scan# 2147
 Delta R.T. -0.00 min
 Lab File: VV016952.D
 Acq: 16 Jun 2020 11:33

Tgt Ion	Resp	Lower	Upper
164	95183		
129	96.3	67.0	124.4
131	89.4	64.8	120.3
166	128.4	90.4	167.8

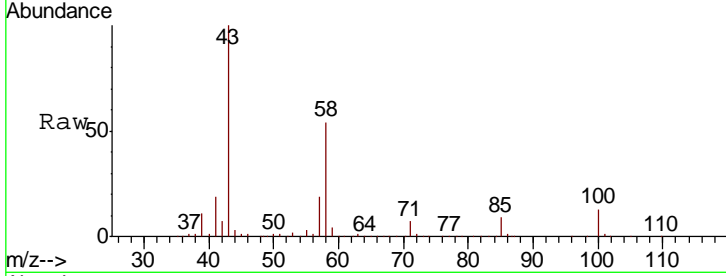




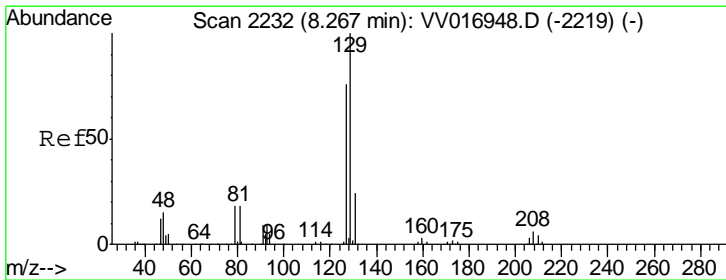
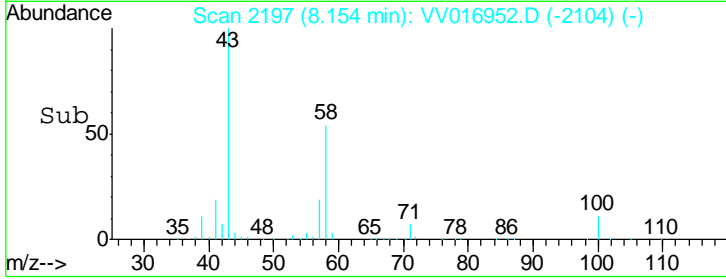
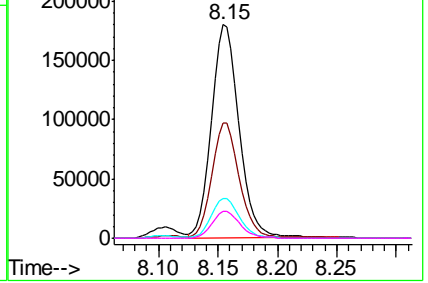
#48
 2-Hexanone
 Concen: 108.604 ug/L
 RT: 8.15 min Scan# 2197
 Delta R.T. 0.00 min
 Lab File: VV016952.D
 Acq: 16 Jun 2020 11:33

Instrument :
 MSVOA_V
 ClientSampled :

Tgt Ion	Resp	Lower	Upper
43	288130		
58	53.0	43.1	64.7
57	19.0	15.3	22.9
100	12.7	10.0	15.0

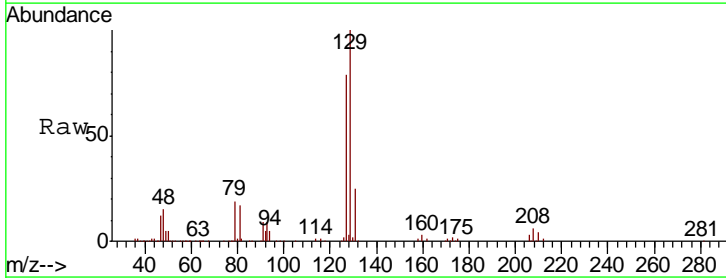


Abundance Ion 43.00 (42.70 to 43.70): VV016948.D (-2188) (-)
 Ion 58.00 (57.70 to 58.70): VV016948.D (-2188) (-)
 Ion 57.00 (56.70 to 57.70): VV016948.D (-2188) (-)
 Ion 100.00 (99.70 to 100.70): VV016948.D (-2188) (-)

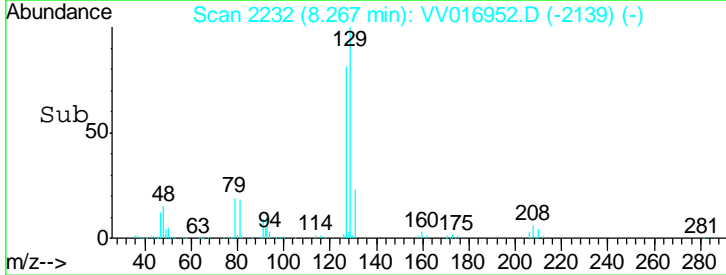
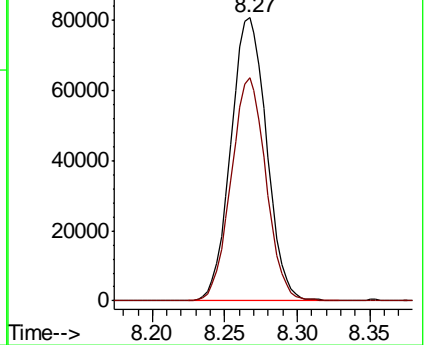


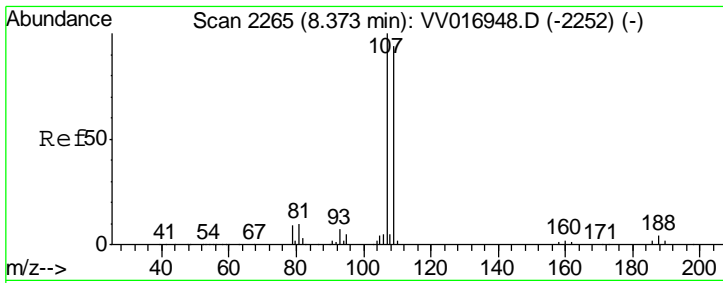
#49
 Dibromochloromethane
 Concen: 55.590 ug/L
 RT: 8.27 min Scan# 2232
 Delta R.T. 0.00 min
 Lab File: VV016952.D
 Acq: 16 Jun 2020 11:33

Tgt Ion	Resp	Lower	Upper
129	138469		
127	78.8	54.2	100.6



Abundance Ion 129.00 (128.70 to 129.70): VV016948.D (-2219) (-)
 Ion 127.00 (126.70 to 127.70): VV016948.D (-2219) (-)

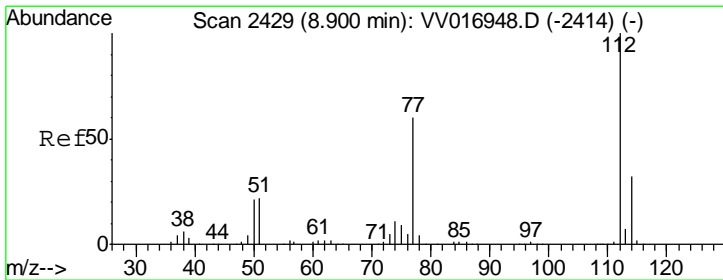
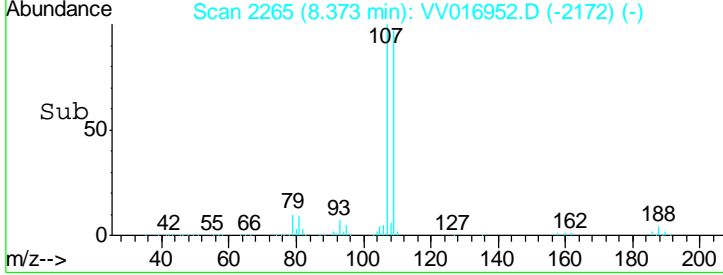
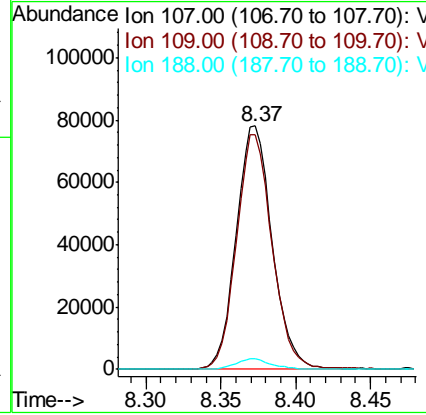
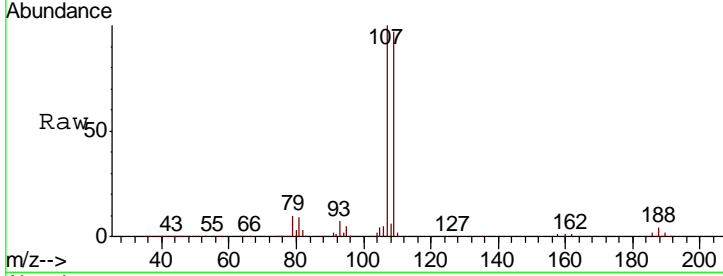




#50
 1,2-Dibromoethane
 Concen: 53.578 ug/L
 RT: 8.37 min Scan# 2265
 Delta R.T. 0.00 min
 Lab File: VV016952.D
 Acq: 16 Jun 2020 11:33

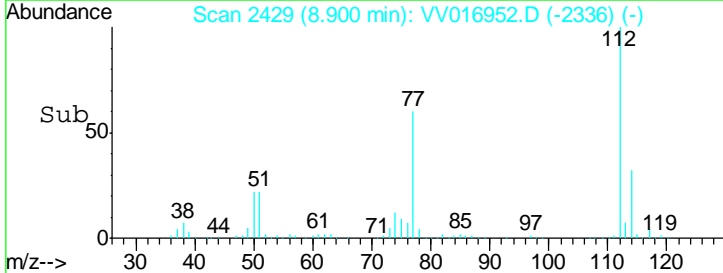
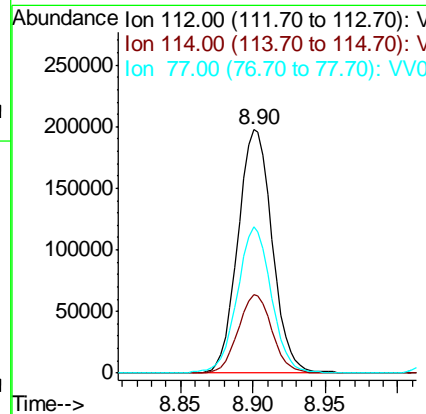
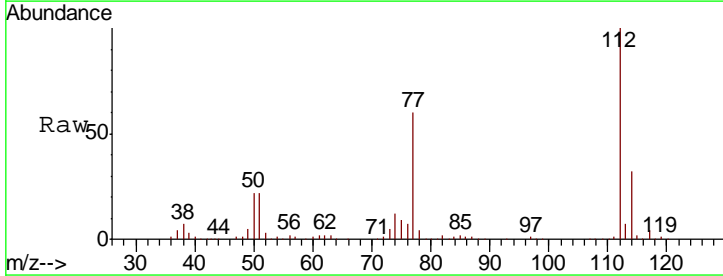
Instrument :
 MSVOA_V
 ClientSampled :

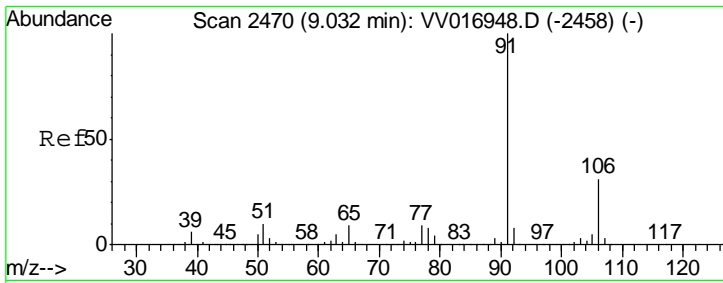
Tgt Ion	Resp	Lower	Upper
107	130709		
109	96.6	66.4	123.2
188	4.4	3.1	4.7



#51
 Chlorobenzene
 Concen: 50.828 ug/L
 RT: 8.90 min Scan# 2429
 Delta R.T. 0.00 min
 Lab File: VV016952.D
 Acq: 16 Jun 2020 11:33

Tgt Ion	Resp	Lower	Upper
112	324594		
114	32.1	22.3	41.3
77	59.9	47.9	71.9

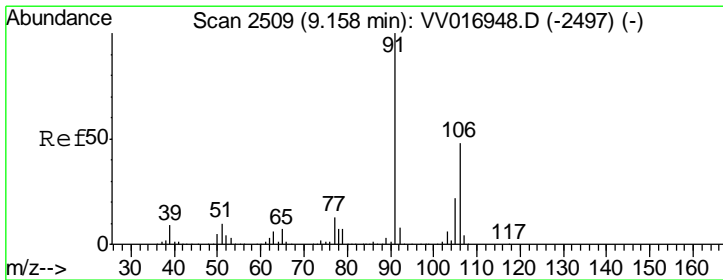
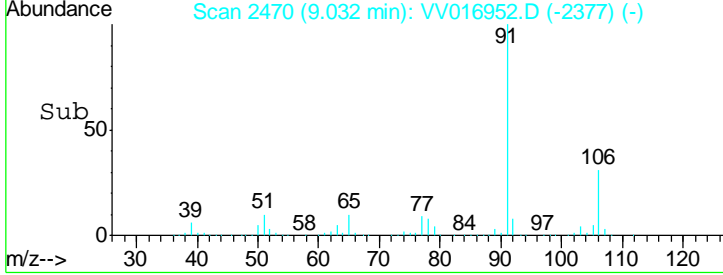
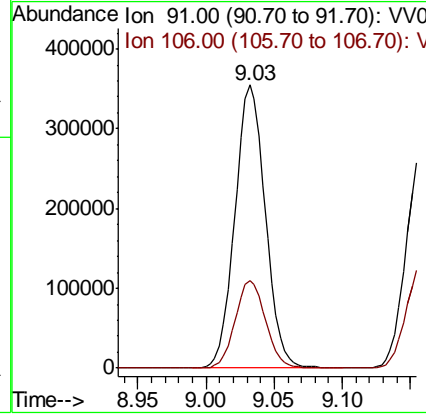
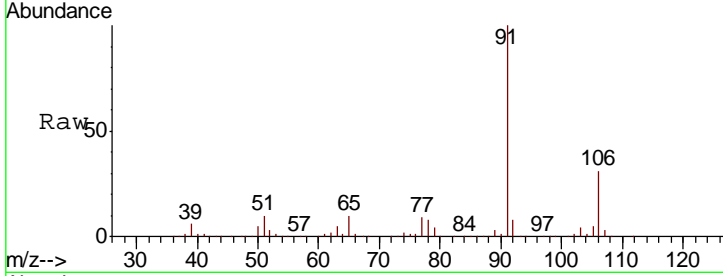




#52
Ethylbenzene
Concen: 50.683 ug/L
RT: 9.03 min Scan# 2470
Delta R.T. 0.00 min
Lab File: VV016952.D
Acq: 16 Jun 2020 11:33

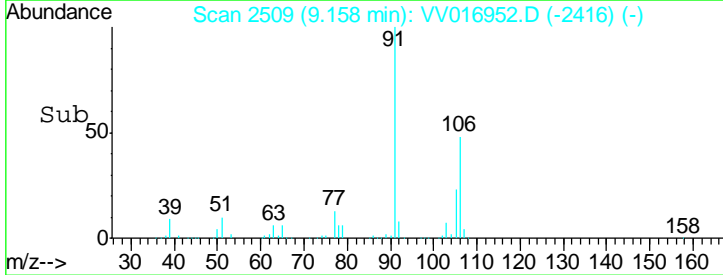
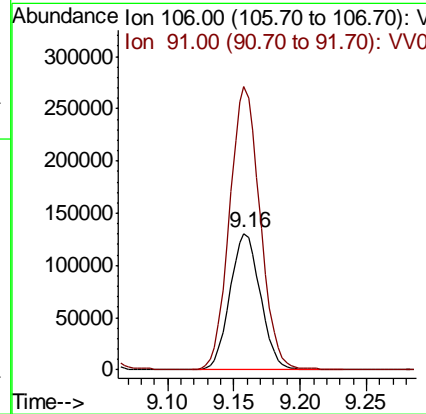
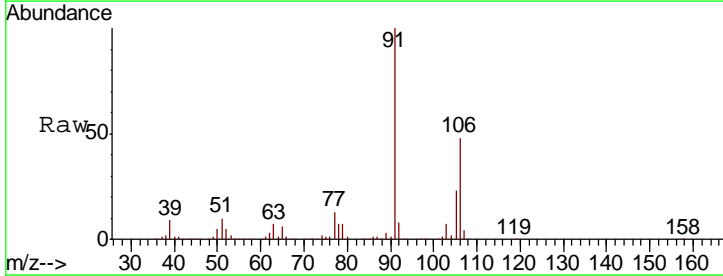
Instrument : MSVOA_V
ClientSampled :

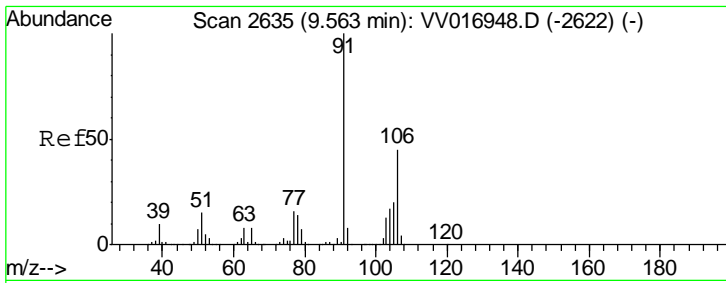
Tgt Ion	Resp	Lower	Upper
91	100		
106	31.0	21.1	39.1



#53
m,p-Xylene
Concen: 51.270 ug/L
RT: 9.16 min Scan# 2509
Delta R.T. 0.00 min
Lab File: VV016952.D
Acq: 16 Jun 2020 11:33

Tgt Ion	Resp	Lower	Upper
106	100		
91	207.3	144.6	268.6

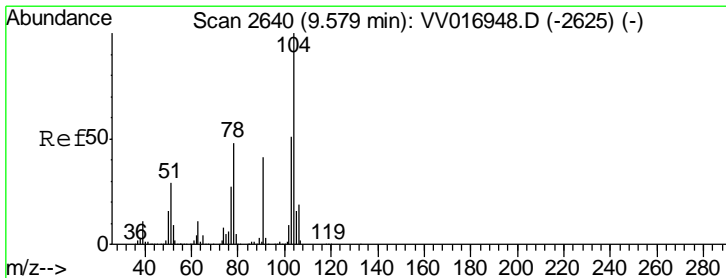
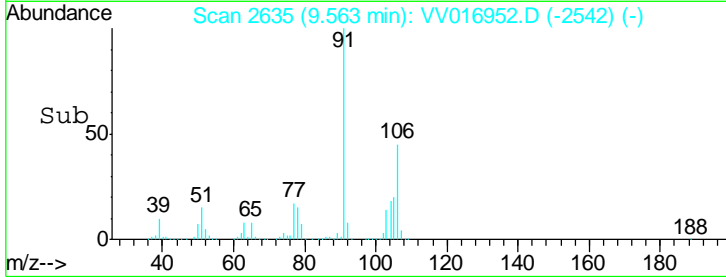
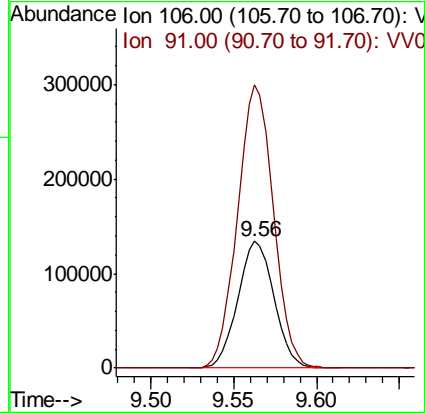
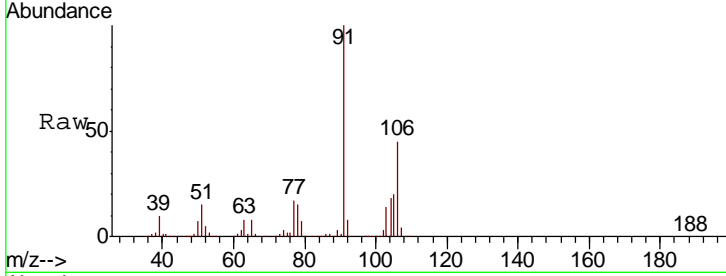




#54
 o-xylene
 Concen: 51.128 ug/L
 RT: 9.56 min Scan# 2635
 Delta R.T. 0.00 min
 Lab File: VV016952.D
 Acq: 16 Jun 2020 11:33

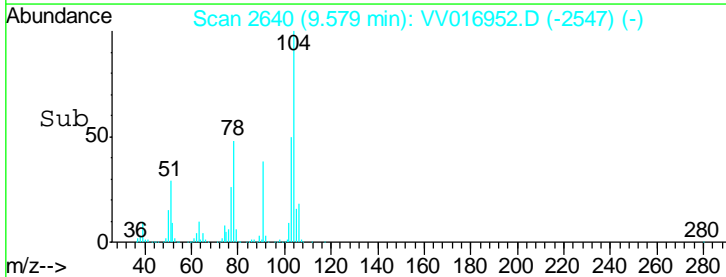
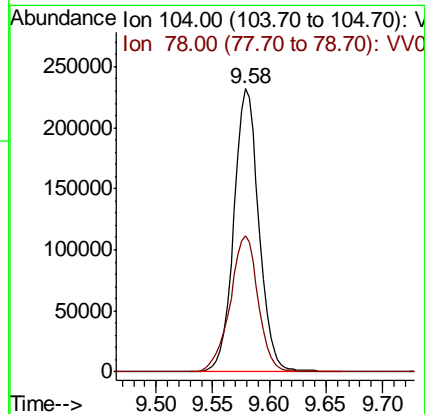
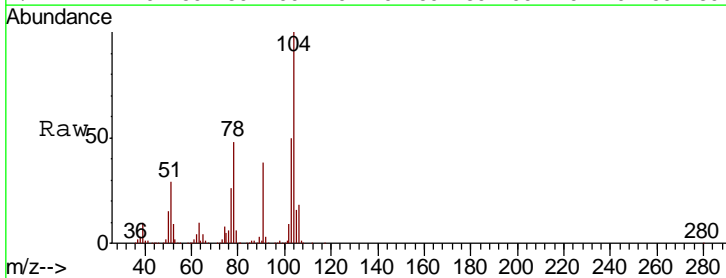
Instrument : MSVOA_V
 ClientSampled :

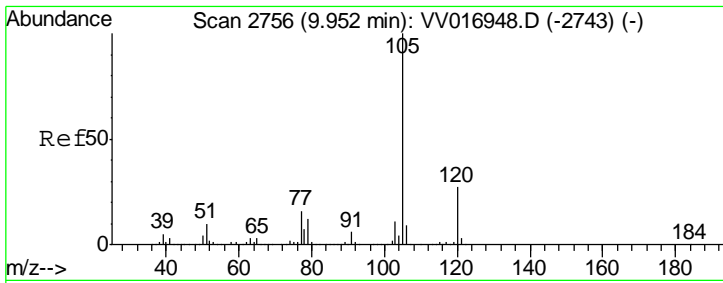
Tgt Ion	Resp	Lower	Upper
106	203556		
91	223.5	155.9	289.5



#55
 Styrene
 Concen: 53.344 ug/L
 RT: 9.58 min Scan# 2640
 Delta R.T. 0.00 min
 Lab File: VV016952.D
 Acq: 16 Jun 2020 11:33

Tgt Ion	Resp	Lower	Upper
104	359063		
78	48.3	32.6	60.6

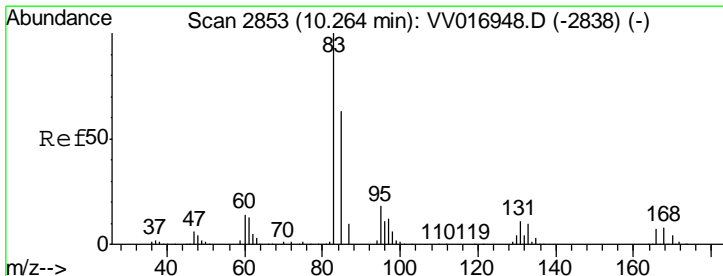
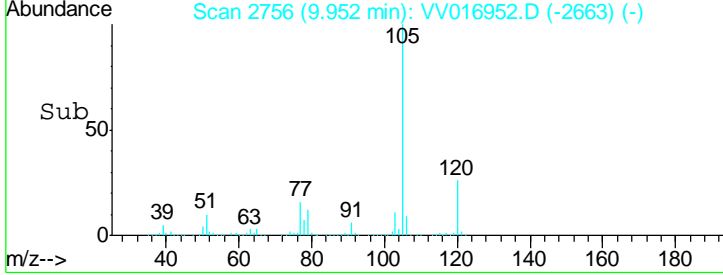
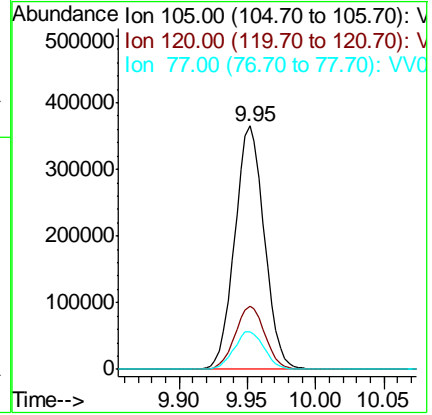
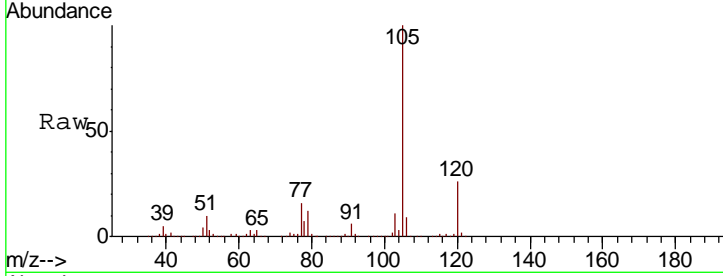




#56
 Isopropylbenzene
 Concen: 51.310 ug/L
 RT: 9.95 min Scan# 2756
 Delta R.T. 0.00 min
 Lab File: VV016952.D
 Acq: 16 Jun 2020 11:33

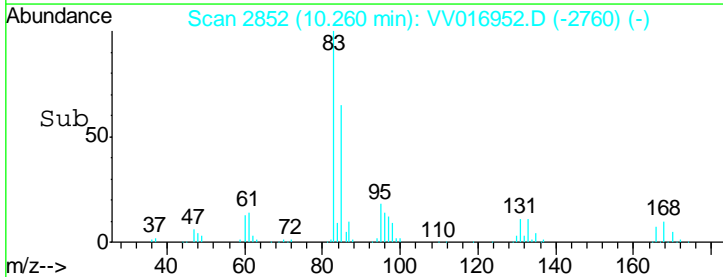
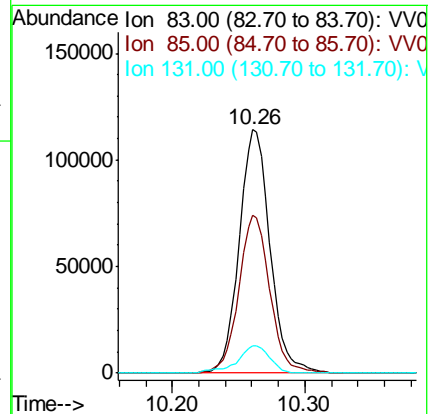
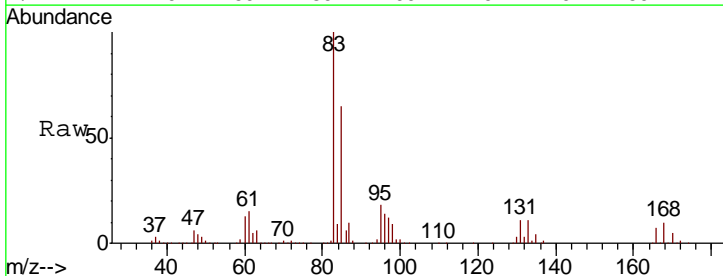
Instrument :
 MSVOA_V
 ClientSampled :

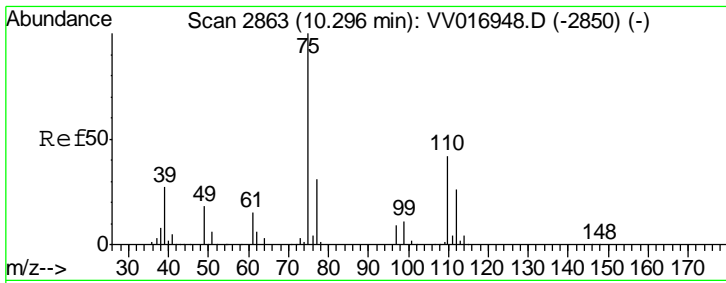
Tgt Ion	Resp	Lower	Upper
105	548894		
120	26.2	21.2	31.8
77	16.0	13.0	19.4



#58
 1,1,2,2-Tetrachloroethane
 Concen: 51.614 ug/L
 RT: 10.26 min Scan# 2852
 Delta R.T. -0.00 min
 Lab File: VV016952.D
 Acq: 16 Jun 2020 11:33

Tgt Ion	Resp	Lower	Upper
83	184357		
85	65.1	46.8	86.8
131	11.3	7.9	11.9

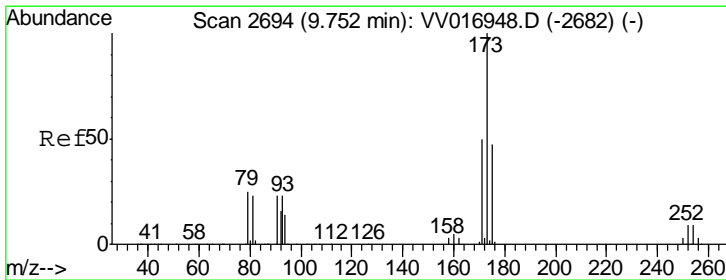
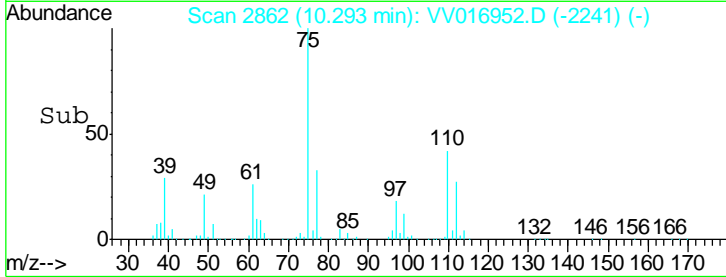
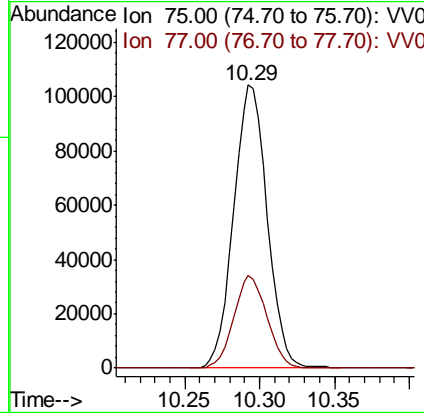
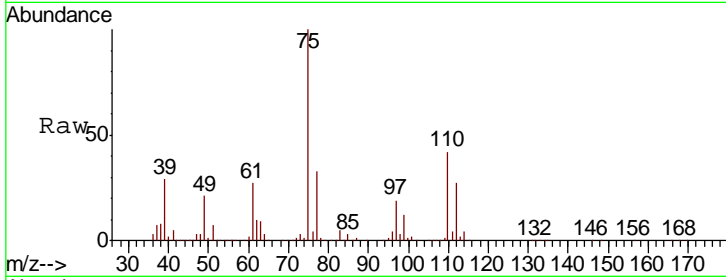




#59
 1,2,3-Trichloropropane
 Concen: 54.339 ug/L
 RT: 10.29 min Scan# 2862
 Delta R.T. -0.00 min
 Lab File: VV016952.D
 Acq: 16 Jun 2020 11:33

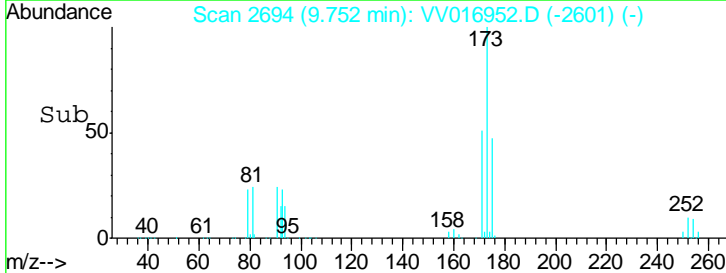
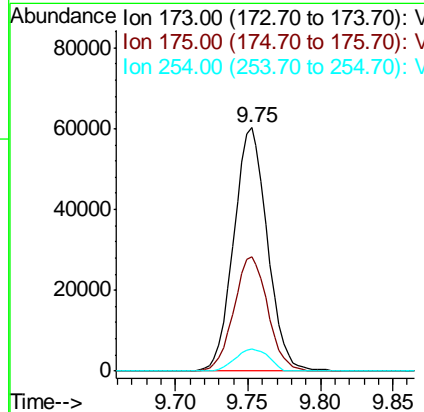
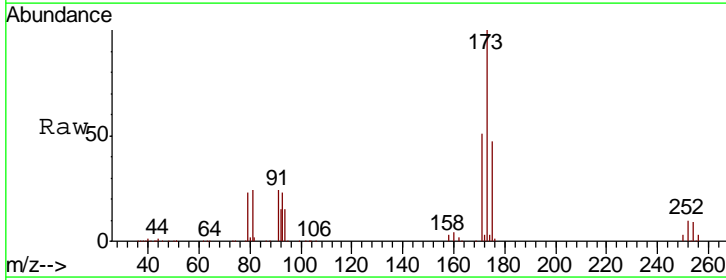
Instrument : MSVOA_V
 ClientSampled :

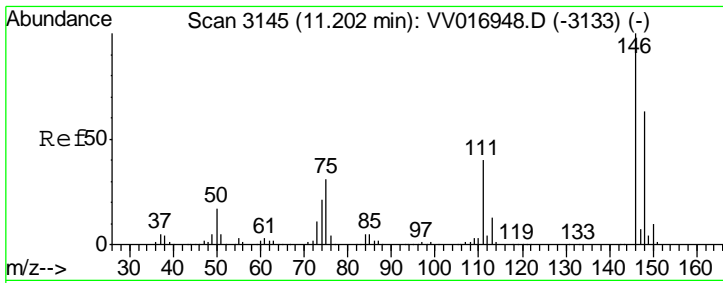
Tgt Ion	Resp	Lower	Upper
75	162799		
77	32.4	26.1	39.1



#61
 Bromoform
 Concen: 55.013 ug/L
 RT: 9.75 min Scan# 2694
 Delta R.T. 0.00 min
 Lab File: VV016952.D
 Acq: 16 Jun 2020 11:33

Tgt Ion	Resp	Lower	Upper
173	96594		
175	47.1	39.0	58.4
254	9.0	7.6	11.4

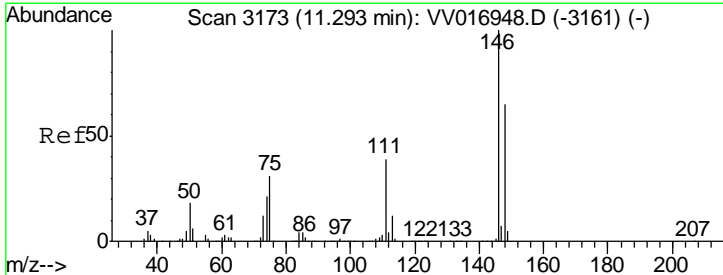
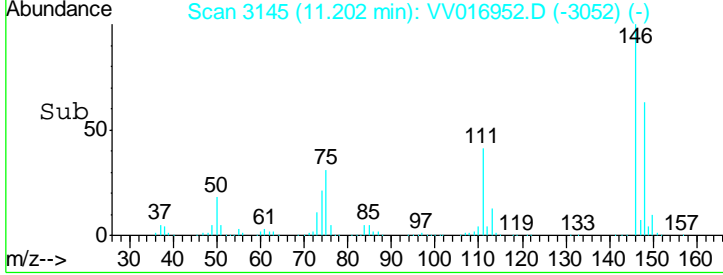
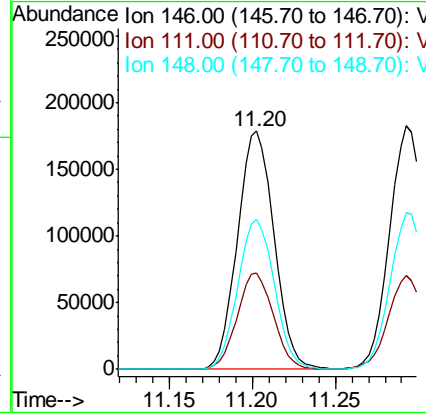
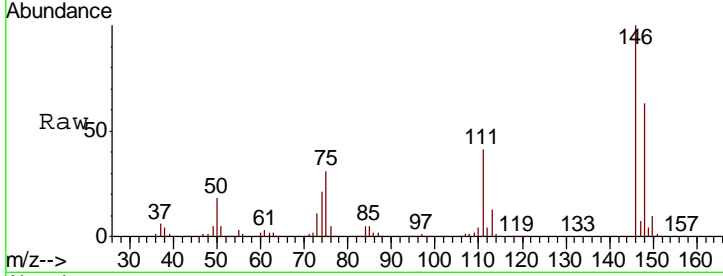




#62
 1,3-Dichlorobenzene
 Concen: 50.922 ug/L
 RT: 11.20 min Scan# 3145
 Delta R.T. 0.00 min
 Lab File: VV016952.D
 Acq: 16 Jun 2020 11:33

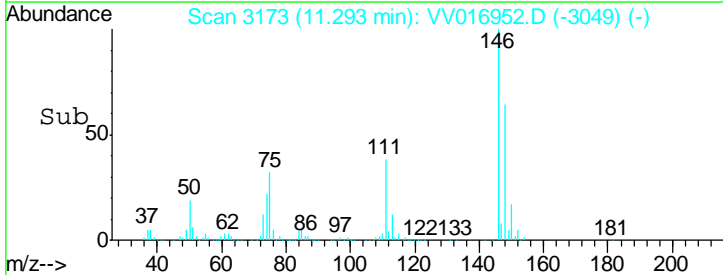
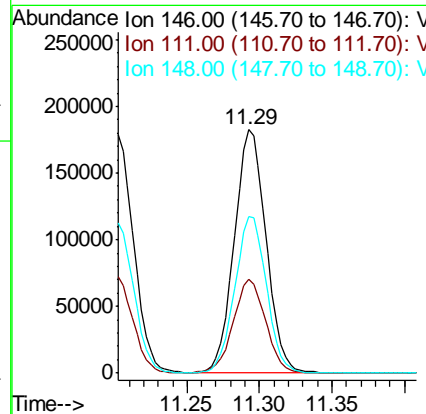
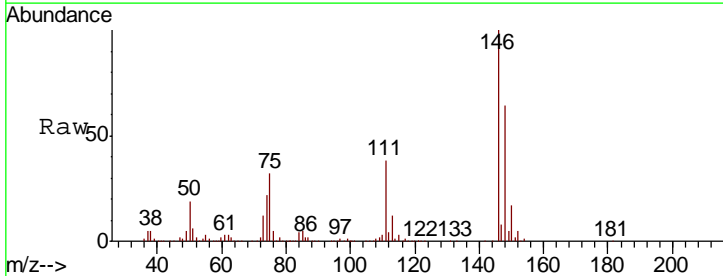
Instrument :
 MSVOA_V
 ClientSampled :

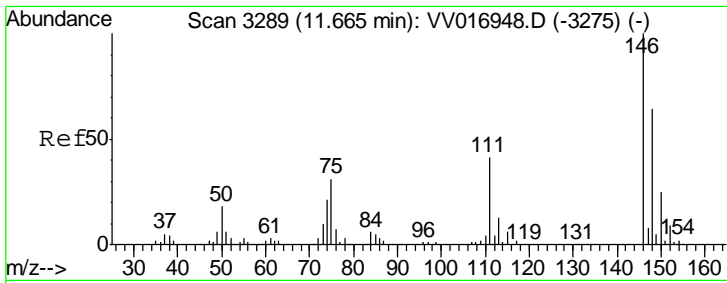
Tgt Ion	Resp	Lower	Upper
146	100		
111	40.6	28.3	52.7
148	62.8	44.2	82.2



#63
 1,4-Dichlorobenzene
 Concen: 50.506 ug/L
 RT: 11.29 min Scan# 3173
 Delta R.T. 0.00 min
 Lab File: VV016952.D
 Acq: 16 Jun 2020 11:33

Tgt Ion	Resp	Lower	Upper
146	100		
111	38.3	26.7	49.7
148	64.2	43.5	80.9

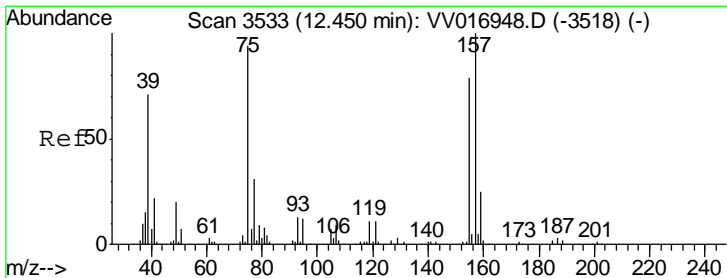
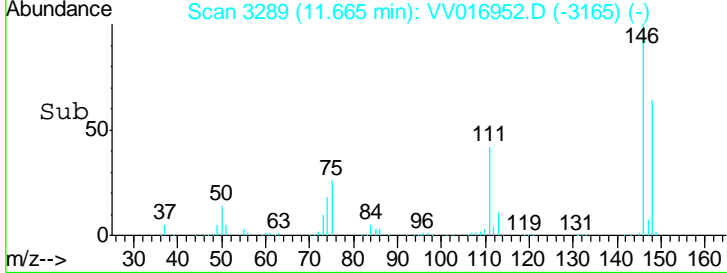
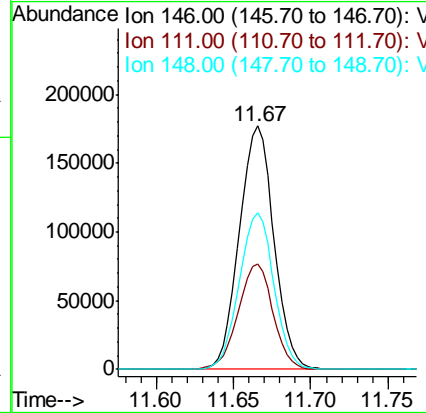
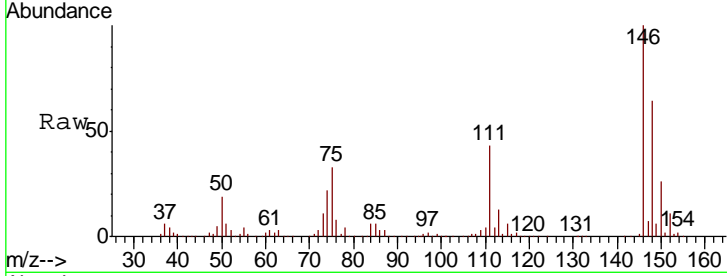




#65
 1,2-Dichlorobenzene
 Concen: 50.780 ug/L
 RT: 11.67 min Scan# 3289
 Delta R.T. 0.00 min
 Lab File: VV016952.D
 Acq: 16 Jun 2020 11:33

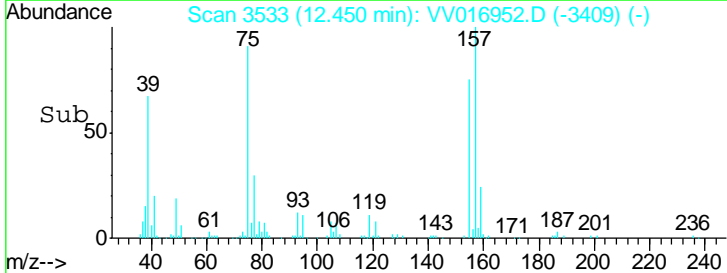
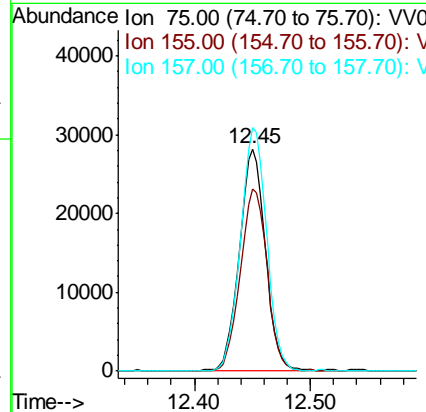
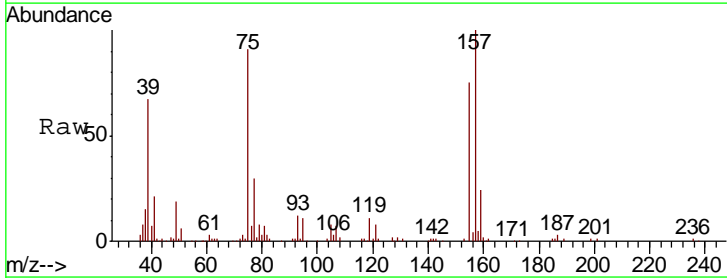
Instrument :
 MSVOA_V
 ClientSampled :

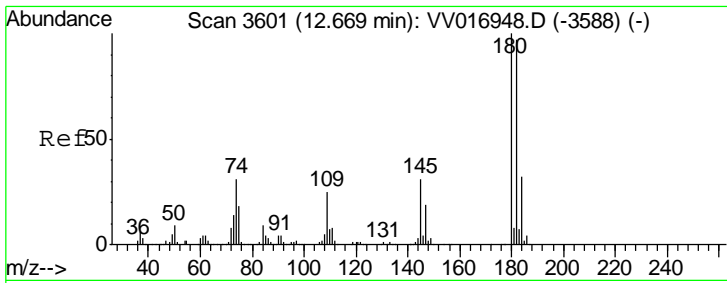
Tgt Ion	Resp	Lower	Upper
146	100		
111	43.4	33.7	50.5
148	64.3	50.7	76.1



#66
 1,2-Dibromo-3-chloropropane
 Concen: 51.255 ug/L
 RT: 12.45 min Scan# 3533
 Delta R.T. 0.00 min
 Lab File: VV016952.D
 Acq: 16 Jun 2020 11:33

Tgt Ion	Resp	Lower	Upper
75	100		
155	81.8	69.8	104.6
157	109.5	83.4	125.2

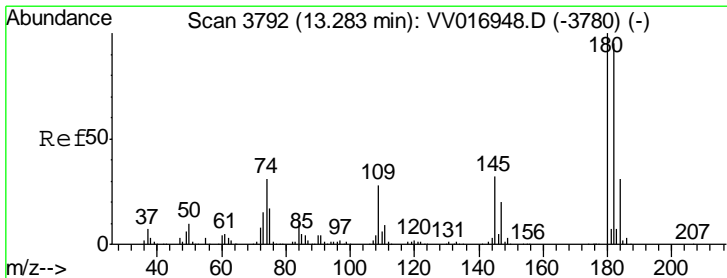
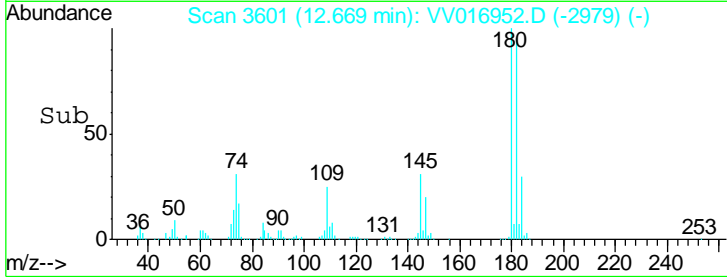
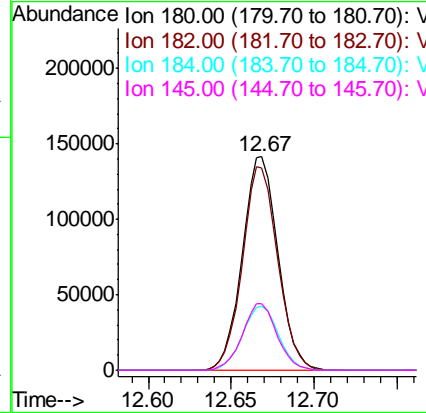
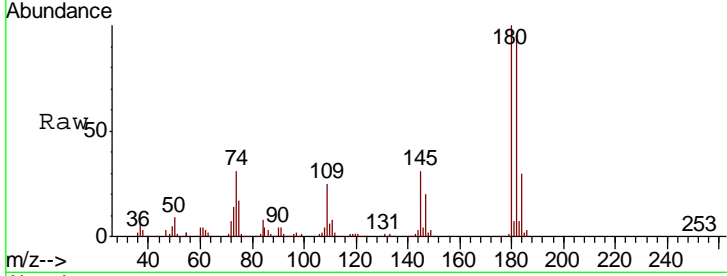




#67
 1,3,5-Trichlorobenzene
 Concen: 52.452 ug/L
 RT: 12.67 min Scan# 3601
 Delta R.T. 0.00 min
 Lab File: VV016952.D
 Acq: 16 Jun 2020 11:33

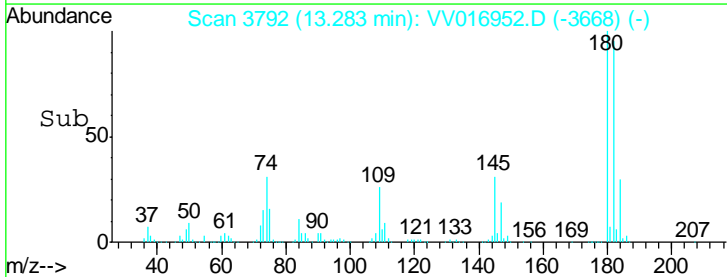
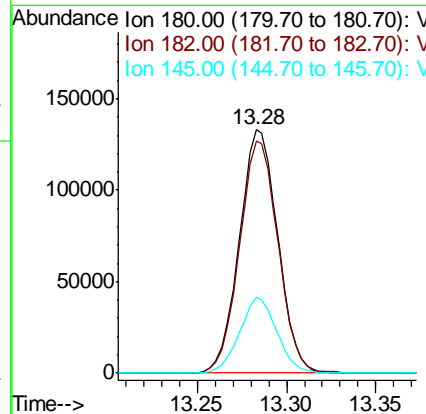
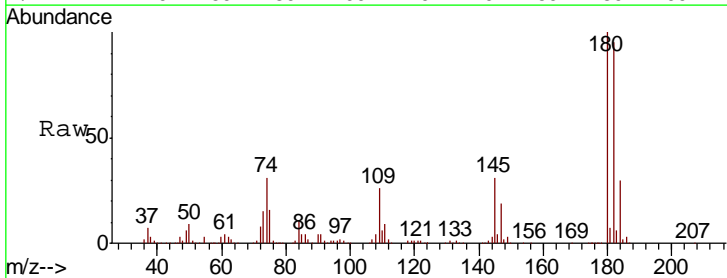
Instrument : MSVOA_V
 ClientSampled :

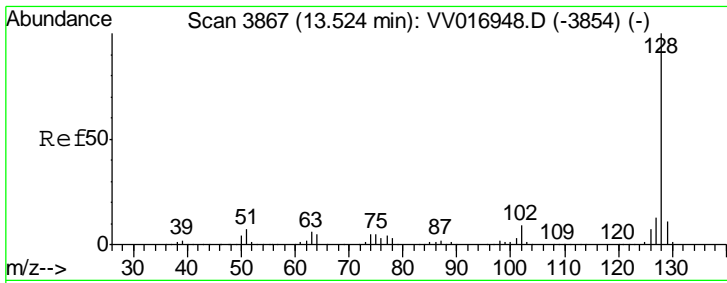
Tgt Ion	Resp	Lower	Upper
180	211473		
182	94.5	75.0	112.6
184	30.2	24.5	36.7
145	30.4	24.4	36.6



#68
 1,2,4-trichlorobenzene
 Concen: 53.822 ug/L
 RT: 13.28 min Scan# 3792
 Delta R.T. 0.00 min
 Lab File: VV016952.D
 Acq: 16 Jun 2020 11:33

Tgt Ion	Resp	Lower	Upper
180	199037		
182	95.7	76.9	115.3
145	30.4	25.2	37.8

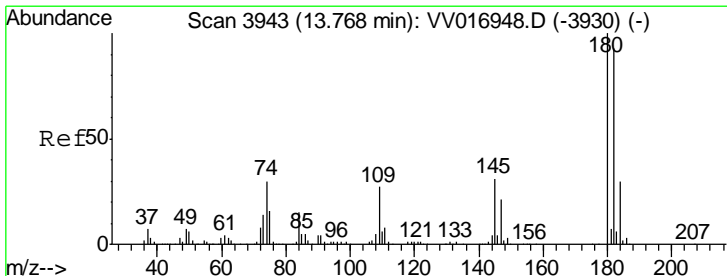
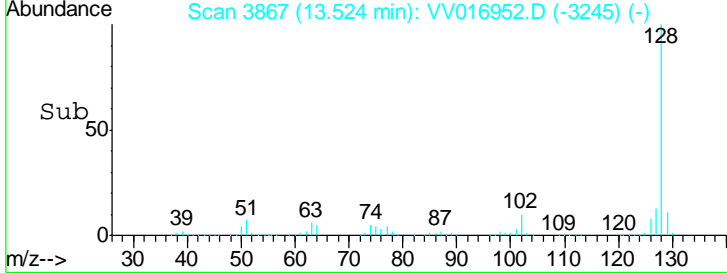
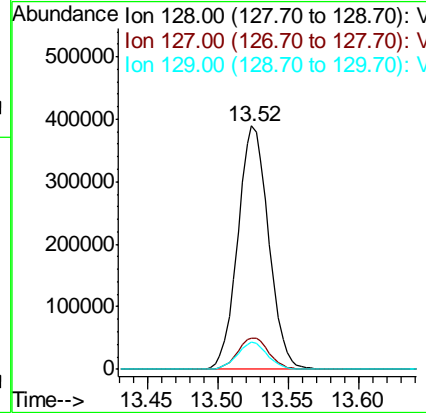
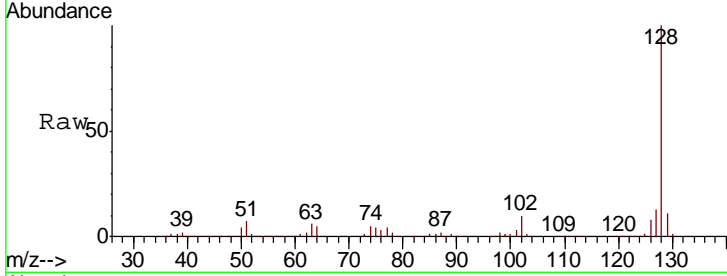




#69
 Naphthalene
 Concen: 56.096 ug/L
 RT: 13.52 min Scan# 3867
 Delta R.T. 0.00 min
 Lab File: VV016952.D
 Acq: 16 Jun 2020 11:33

Instrument : MSVOA_V
 ClientSampled :

Tgt Ion	Resp	Lower	Upper
128	596725		
127	13.1	10.5	15.7
129	10.9	8.7	13.1



#70
 1,2,3-Trichlorobenzene
 Concen: 54.195 ug/L
 RT: 13.77 min Scan# 3943
 Delta R.T. 0.00 min
 Lab File: VV016952.D
 Acq: 16 Jun 2020 11:33

Tgt Ion	Resp	Lower	Upper
180	196100		
182	96.6	76.5	114.7
145	33.9	26.1	39.1

