

Data Path : Z:\voasrv\HPCHEM1\MSVOA_V\Data\VW061623\
 Data File : VW031568.D
 Acq On : 16 Jun 2023 12:04
 Operator : SY/MD
 Sample : 03254-04
 Misc : 5.0mL/MSVOA_V/WATER
 ALS Vial : 8 Sample Multiplier: 1

Instrument :
 MSVOA_V
 ClientSampleId :
 EXYZ3

Quant Time: Jun 17 02:27:35 2023
 Quant Method : Z:\voasrv\HPCHEM1\MSVOA_V\Method\SFAMVLM061423WMA.M
 Quant Title : VOC Analysis
 QLast Update : Sat Jun 17 02:08:04 2023
 Response via : Initial Calibration

Compound	R.T.	QIon	Response	Conc	Units	Dev(Min)

Internal Standards						
1) 1,4-Difluorobenzene	5.542	114	229440	50.000	ug/L	0.00
28) Chlorobenzene-d5	8.792	117	231690	50.000	ug/L	0.00
58) 1,4-Dichlorobenzene-d4	11.191	152	114176	50.000	ug/L	0.00
System Monitoring Compounds						
4) Vinyl Chloride-d3	1.281	65	49913	32.687	ug/L	0.00
Spiked Amount	50.000	Range 60 - 135	Recovery =	65.380%		
7) Chloroethane-d5	1.539	69	52518	39.417	ug/L	0.00
Spiked Amount	50.000	Range 70 - 130	Recovery =	78.840%		
11) 1,1-Dichloroethene-d2	2.066	65	28066	35.663	ug/L	0.00
Spiked Amount	50.000	Range 60 - 125	Recovery =	71.320%		
21) 2-Butanone-d5	3.799	46	98677	79.807	ug/L	0.00
Spiked Amount	100.000	Range 40 - 130	Recovery =	79.810%		
24) Chloroform-d	4.259	84	151669	39.660	ug/L	0.00
Spiked Amount	50.000	Range 70 - 125	Recovery =	79.320%		
26) 1,2-Dichloroethane-d4	4.950	65	100617	42.052	ug/L	0.00
Spiked Amount	50.000	Range 70 - 125	Recovery =	84.100%		
32) Benzene-d6	4.969	84	261021	40.024	ug/L	0.00
Spiked Amount	50.000	Range 70 - 125	Recovery =	80.040%		
36) 1,2-Dichloropropane-d6	5.995	67	97116	42.015	ug/L	0.00
Spiked Amount	50.000	Range 70 - 120	Recovery =	84.040%		
41) Toluene-d8	7.249	98	221273	36.974	ug/L	0.00
Spiked Amount	50.000	Range 80 - 120	Recovery =	73.940%#		
43) trans-1,3-Dichloroprop...	7.558	79	43872	38.934	ug/L	0.00
Spiked Amount	50.000	Range 60 - 125	Recovery =	77.860%		
47) 2-Hexanone-d5	8.033	63	70393	77.132	ug/L	0.00
Spiked Amount	100.000	Range 45 - 130	Recovery =	77.130%		
56) 1,1,2,2-Tetrachloroeth...	10.159	84	139498	39.983	ug/L	0.00
Spiked Amount	50.000	Range 65 - 120	Recovery =	79.960%		
66) 1,2-Dichlorobenzene-d4	11.567	152	100440	46.150	ug/L	0.00
Spiked Amount	50.000	Range 80 - 120	Recovery =	92.300%		

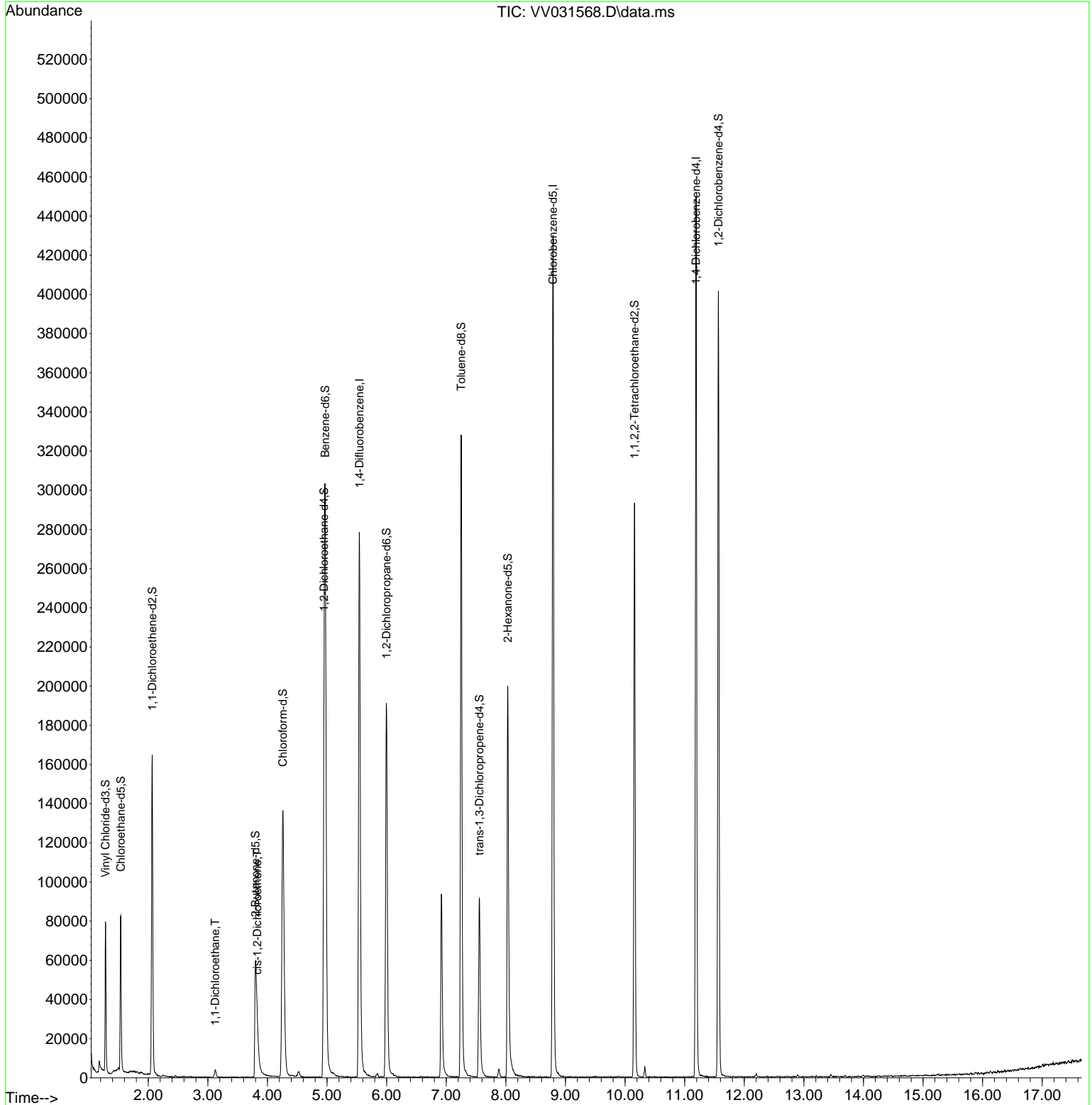
Target Compounds						Qvalue
19) 1,1-Dichloroethane	3.124	63	4216	1.102	ug/L	95
20) cis-1,2-Dichloroethene	3.831	96	4675	2.441	ug/L	98

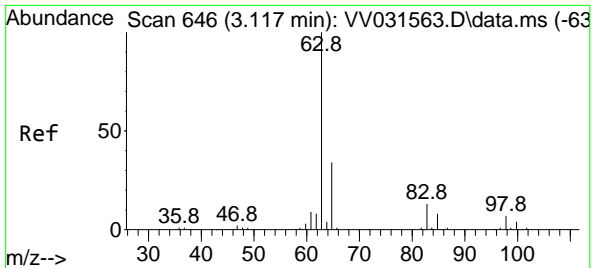
(#) = qualifier out of range (m) = manual integration (+) = signals summed

Data Path : Z:\voasrv\HPCHEM1\MSVOA_V\Data\VV061623\
 Data File : VV031568.D
 Acq On : 16 Jun 2023 12:04
 Operator : SY/MD
 Sample : 03254-04
 Misc : 5.0mL/MSVOA_V/WATER
 ALS Vial : 8 Sample Multiplier: 1

Instrument :
 MSVOA_V
 ClientSampleId :
 EXYZ3

Quant Time: Jun 17 02:27:35 2023
 Quant Method : Z:\voasrv\HPCHEM1\MSVOA_V\Method\SFAMVLM061423WMA.M
 Quant Title : VOC Analysis
 QLast Update : Sat Jun 17 02:08:04 2023
 Response via : Initial Calibration

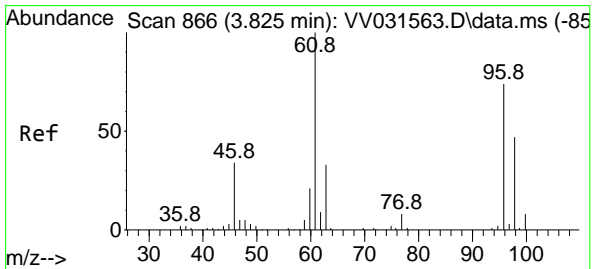
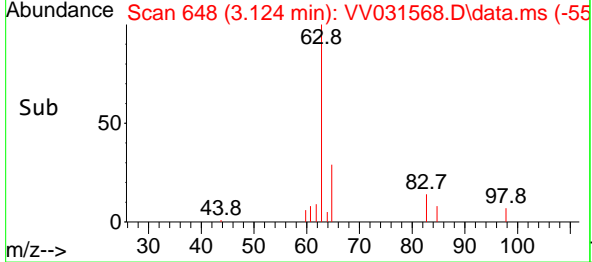
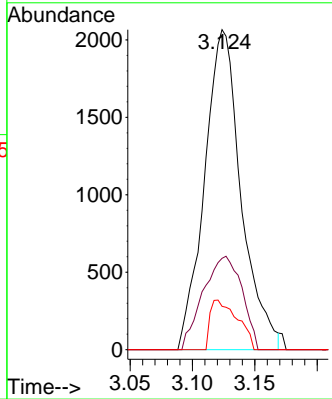
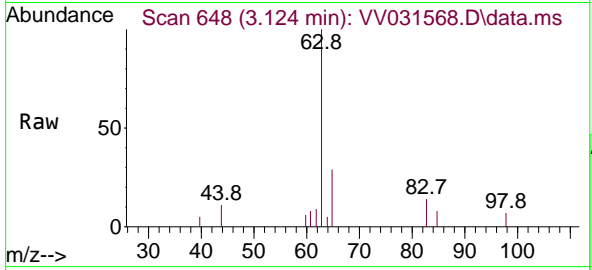




#19
 1,1-Dichloroethane
 Concen: 1.102 ug/L
 RT: 3.124 min Scan# 648
 Delta R.T. 0.006 min
 Lab File: VV031568.D
 Acq: 16 Jun 2023 12:04

Instrument : MSVOA_V
 ClientSampleId : XYZ3

Tgt Ion	Resp	Lower	Upper
63	4216		
65	28.6	22.5	41.7
83	13.6	10.0	18.6



#20
 cis-1,2-Dichloroethene
 Concen: 2.441 ug/L
 RT: 3.831 min Scan# 868
 Delta R.T. 0.006 min
 Lab File: VV031568.D
 Acq: 16 Jun 2023 12:04

Tgt Ion	Resp	Lower	Upper
96	4675		
61	142.5	98.6	183.0
98	66.8	45.7	84.9

