

Data Path : Z:\voasrv\HPCHEM1\MSVOA_V\Data\VW061623\
 Data File : VW031574.D
 Acq On : 16 Jun 2023 14:23
 Operator : SY/MD
 Sample : 03249-04DL 10X
 Misc : 5.0mL/MSVOA_V/WATER
 ALS Vial : 14 Sample Multiplier: 1

Instrument :
 MSVOA_V
 ClientSampleId :
 EXYS6DL

Quant Time: Jun 17 02:29:00 2023
 Quant Method : Z:\voasrv\HPCHEM1\MSVOA_V\Method\SFAMVLM061423WMA.M
 Quant Title : VOC Analysis
 QLast Update : Sat Jun 17 02:08:04 2023
 Response via : Initial Calibration

Compound	R.T.	QIon	Response	Conc	Units	Dev(Min)

Internal Standards						
1) 1,4-Difluorobenzene	5.542	114	227098	50.000	ug/L	0.00
28) Chlorobenzene-d5	8.792	117	228047	50.000	ug/L	0.00
58) 1,4-Dichlorobenzene-d4	11.191	152	114330	50.000	ug/L	0.00
System Monitoring Compounds						
4) Vinyl Chloride-d3	1.282	65	49988	33.074	ug/L	0.00
Spiked Amount	50.000	Range 60 - 135	Recovery =	66.140%		
7) Chloroethane-d5	1.536	69	49168	37.283	ug/L	0.00
Spiked Amount	50.000	Range 70 - 130	Recovery =	74.560%		
11) 1,1-Dichloroethene-d2	2.066	65	27897	35.813	ug/L	0.00
Spiked Amount	50.000	Range 60 - 125	Recovery =	71.620%		
21) 2-Butanone-d5	3.799	46	103106	84.249	ug/L	0.00
Spiked Amount	100.000	Range 40 - 130	Recovery =	84.250%		
24) Chloroform-d	4.259	84	146702	38.757	ug/L	0.00
Spiked Amount	50.000	Range 70 - 125	Recovery =	77.520%		
26) 1,2-Dichloroethane-d4	4.950	65	100972	42.635	ug/L	0.00
Spiked Amount	50.000	Range 70 - 125	Recovery =	85.280%		
32) Benzene-d6	4.969	84	258666	40.297	ug/L	0.00
Spiked Amount	50.000	Range 70 - 125	Recovery =	80.600%		
36) 1,2-Dichloropropane-d6	5.995	67	92464	40.642	ug/L	0.00
Spiked Amount	50.000	Range 70 - 120	Recovery =	81.280%		
41) Toluene-d8	7.249	98	214862	36.476	ug/L	0.00
Spiked Amount	50.000	Range 80 - 120	Recovery =	72.960%#		
43) trans-1,3-Dichloroprop...	7.558	79	42108	37.966	ug/L	0.00
Spiked Amount	50.000	Range 60 - 125	Recovery =	75.940%		
47) 2-Hexanone-d5	8.034	63	77668	86.463	ug/L	0.00
Spiked Amount	100.000	Range 45 - 130	Recovery =	86.460%		
56) 1,1,2,2-Tetrachloroeth...	10.159	84	142950	41.627	ug/L	0.00
Spiked Amount	50.000	Range 65 - 120	Recovery =	83.260%		
66) 1,2-Dichlorobenzene-d4	11.567	152	99957	45.866	ug/L	0.00
Spiked Amount	50.000	Range 80 - 120	Recovery =	91.740%		

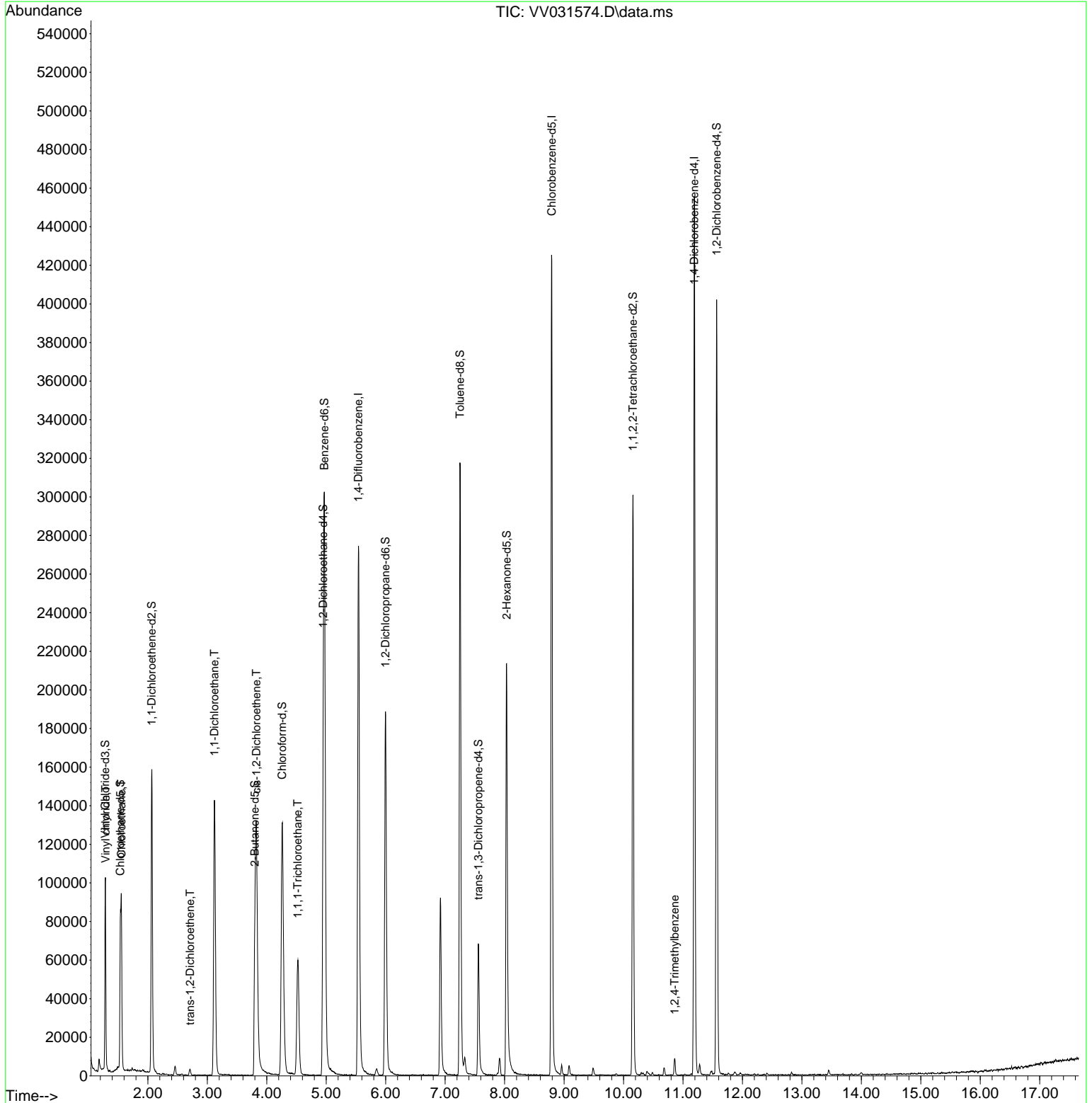
Target Compounds						Qvalue
5) Vinyl chloride	1.288	62	18422	8.176	ug/L	99
8) Chloroethane	1.555	64	47168	32.411	ug/L	94
17) trans-1,2-Dichloroethene	2.709	96	1135	0.647	ug/L	89
19) 1,1-Dichloroethane	3.121	63	149535	39.500	ug/L	98
20) cis-1,2-Dichloroethene	3.828	96	53573	28.262	ug/L	97
30) 1,1,1-Trichloroethane	4.519	97	53500	14.632	ug/L	99
63) 1,2,4-Trimethylbenzene	10.860	105	4879	0.869	ug/L	97

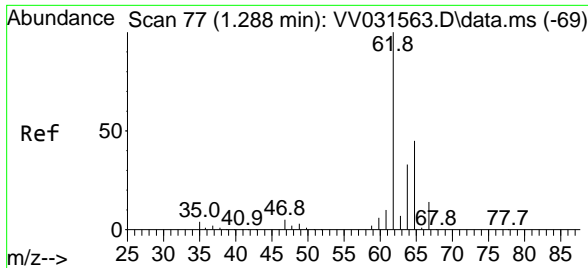
(#) = qualifier out of range (m) = manual integration (+) = signals summed

Data Path : Z:\voasrv\HPCHEM1\MSVOA_V\Data\VV061623\
 Data File : VV031574.D
 Acq On : 16 Jun 2023 14:23
 Operator : SY/MD
 Sample : 03249-04DL 10X
 Misc : 5.0mL/MSVOA_V/WATER
 ALS Vial : 14 Sample Multiplier: 1

Instrument :
 MSVOA_V
 ClientSampleId :
 EXYS6DL

Quant Time: Jun 17 02:29:00 2023
 Quant Method : Z:\voasrv\HPCHEM1\MSVOA_V\Method\SFAMVLM061423WMA.M
 Quant Title : VOC Analysis
 QLast Update : Sat Jun 17 02:08:04 2023
 Response via : Initial Calibration

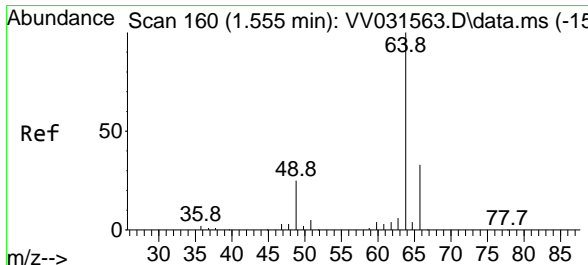
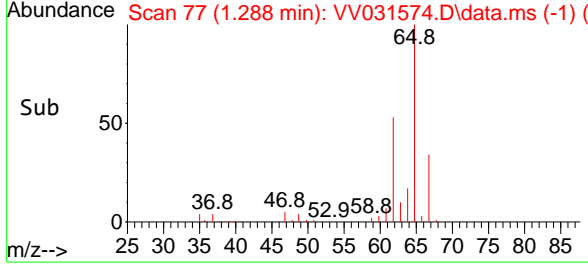
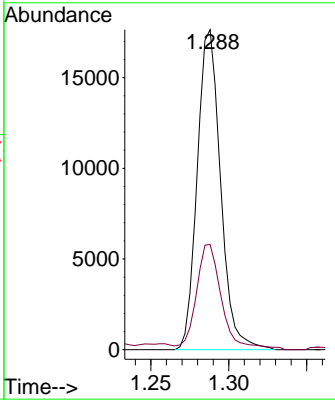
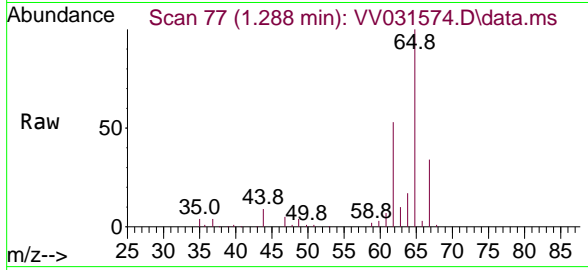




#5
 Vinyl chloride
 Concen: 8.176 ug/L
 RT: 1.288 min Scan# 71
 Delta R.T. -0.000 min
 Lab File: VV031574.D
 Acq: 16 Jun 2023 14:23

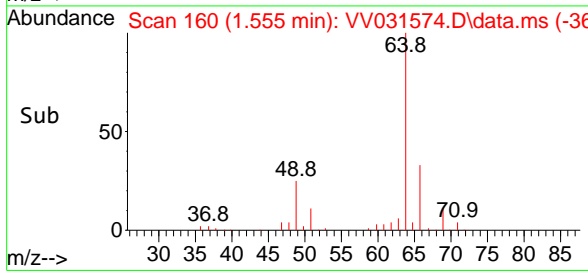
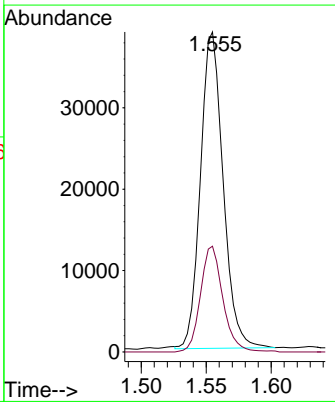
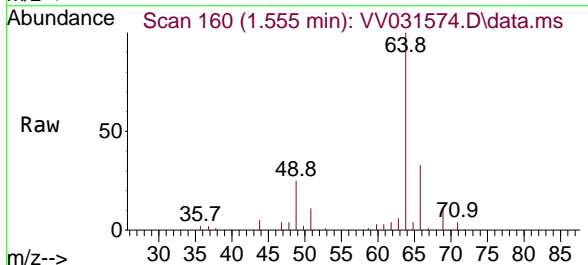
Instrument : MSVOA_V
 ClientSampleId : EXYS6DL

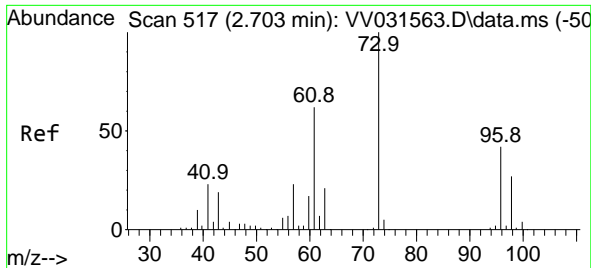
Tgt Ion: 62 Resp: 18422
 Ion Ratio Lower Upper
 62 100
 64 32.9 23.4 43.4



#8
 Chloroethane
 Concen: 32.411 ug/L
 RT: 1.555 min Scan# 160
 Delta R.T. -0.000 min
 Lab File: VV031574.D
 Acq: 16 Jun 2023 14:23

Tgt Ion: 64 Resp: 47168
 Ion Ratio Lower Upper
 64 100
 66 33.1 21.0 39.0



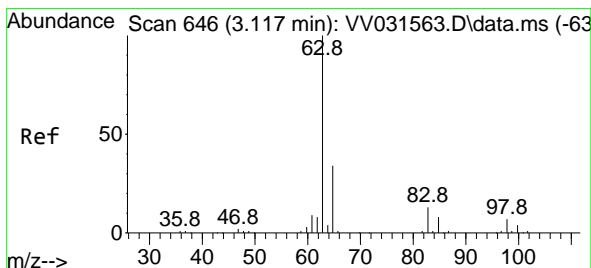
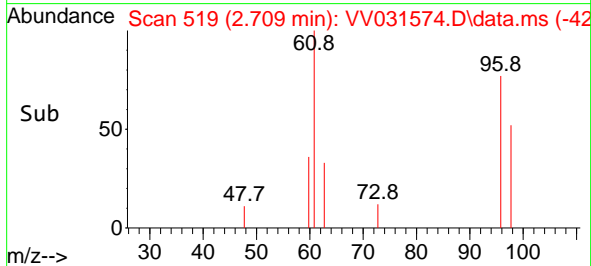
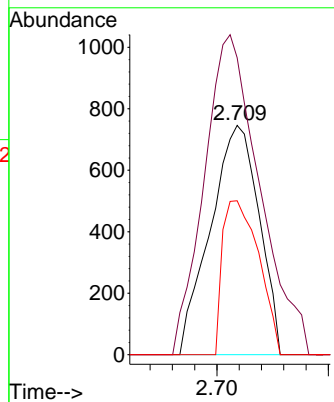
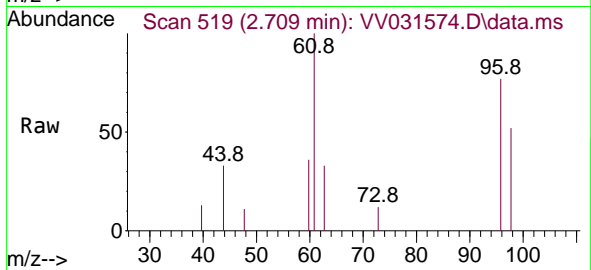


#17
 trans-1,2-Dichloroethene
 Concen: 0.647 ug/L
 RT: 2.709 min Scan# 517
 Delta R.T. 0.006 min
 Lab File: VV031574.D
 Acq: 16 Jun 2023 14:23

Instrument :
 MSVOA_V
 ClientSampleId :
 EXYS6DL

Tgt Ion: 96 Resp: 1135

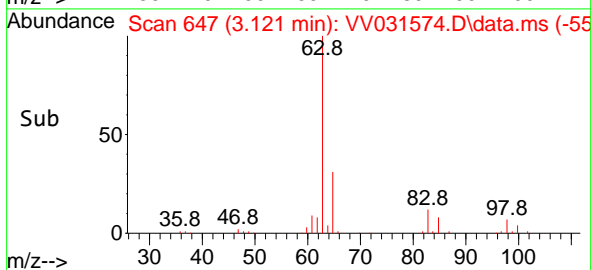
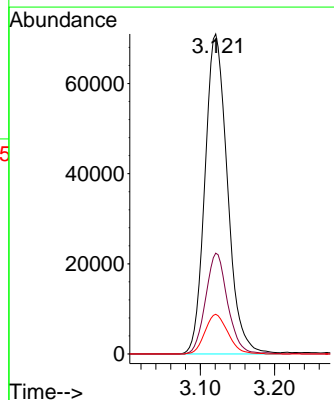
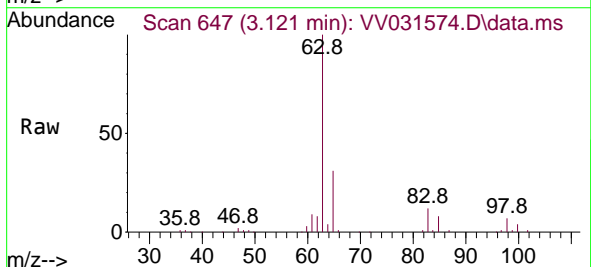
Ion	Ratio	Lower	Upper
96	100		
61	129.5	102.5	190.3
98	67.2	44.1	81.9

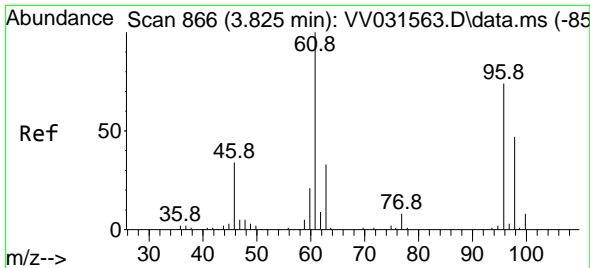


#19
 1,1-Dichloroethane
 Concen: 39.500 ug/L
 RT: 3.121 min Scan# 647
 Delta R.T. 0.003 min
 Lab File: VV031574.D
 Acq: 16 Jun 2023 14:23

Tgt Ion: 63 Resp: 149535

Ion	Ratio	Lower	Upper
63	100		
65	31.5	22.5	41.7
83	13.1	10.0	18.6



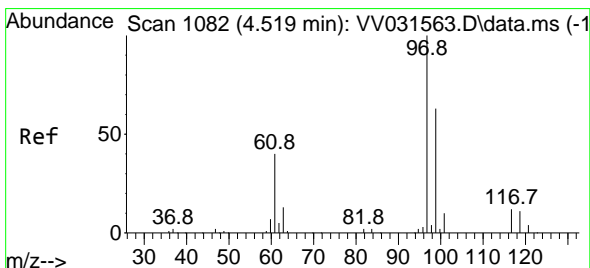
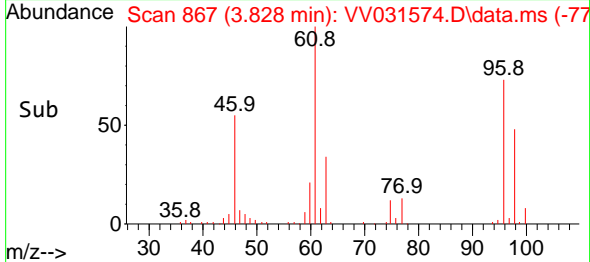
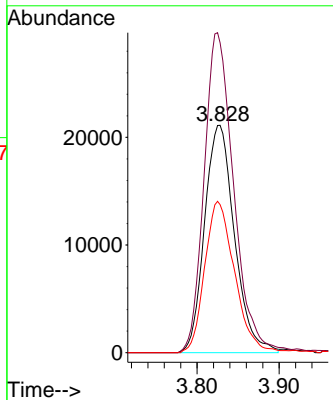
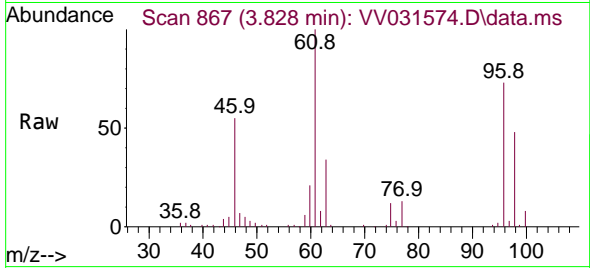


#20
 cis-1,2-Dichloroethene
 Concen: 28.262 ug/L
 RT: 3.828 min Scan# 80
 Delta R.T. 0.003 min
 Lab File: VV031574.D
 Acq: 16 Jun 2023 14:23

Instrument :
 MSVOA_V
 ClientSampleId :
 EXYS6DL

Tgt Ion: 96 Resp: 53573

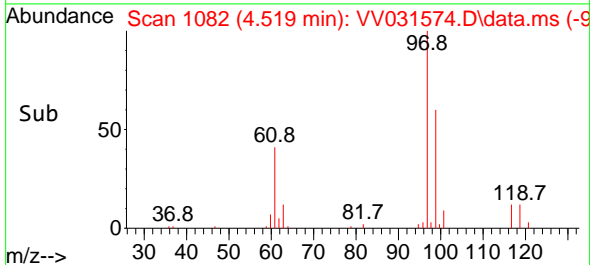
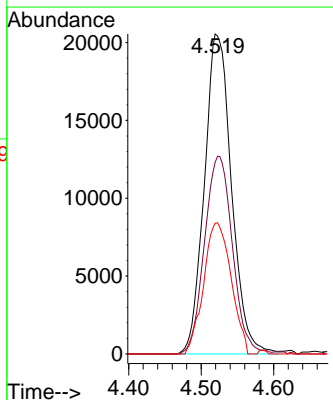
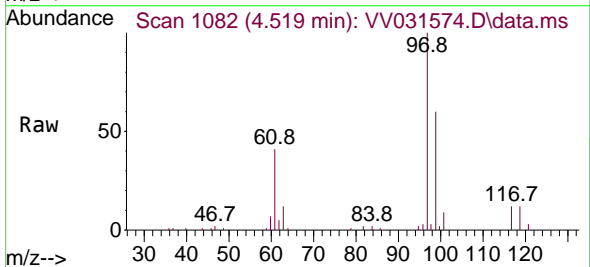
Ion	Ratio	Lower	Upper
96	100		
61	136.2	98.6	183.0
98	66.7	45.7	84.9

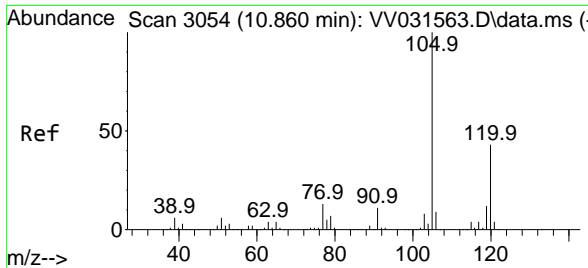


#30
 1,1,1-Trichloroethane
 Concen: 14.632 ug/L
 RT: 4.519 min Scan# 1082
 Delta R.T. 0.000 min
 Lab File: VV031574.D
 Acq: 16 Jun 2023 14:23

Tgt Ion: 97 Resp: 53500

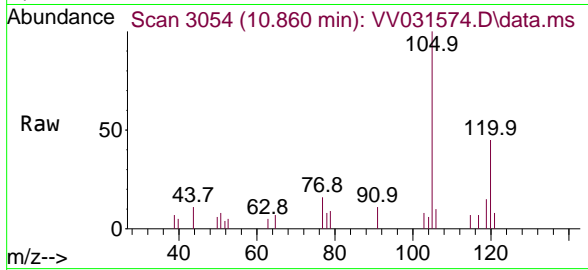
Ion	Ratio	Lower	Upper
97	100		
99	63.3	51.8	77.6
61	41.4	33.0	49.6





#63
 1,2,4-Trimethylbenzene
 Concen: 0.869 ug/L
 RT: 10.860 min Scan# 30
 Delta R.T. -0.000 min
 Lab File: VV031574.D
 Acq: 16 Jun 2023 14:23

Instrument :
 MSVOA_V
 ClientSampleId :
 EXYS6DL



Tgt Ion:105 Resp: 4879
 Ion Ratio Lower Upper
 105 100
 120 43.7 33.4 50.2

